

Houston Pilots Forecast Package



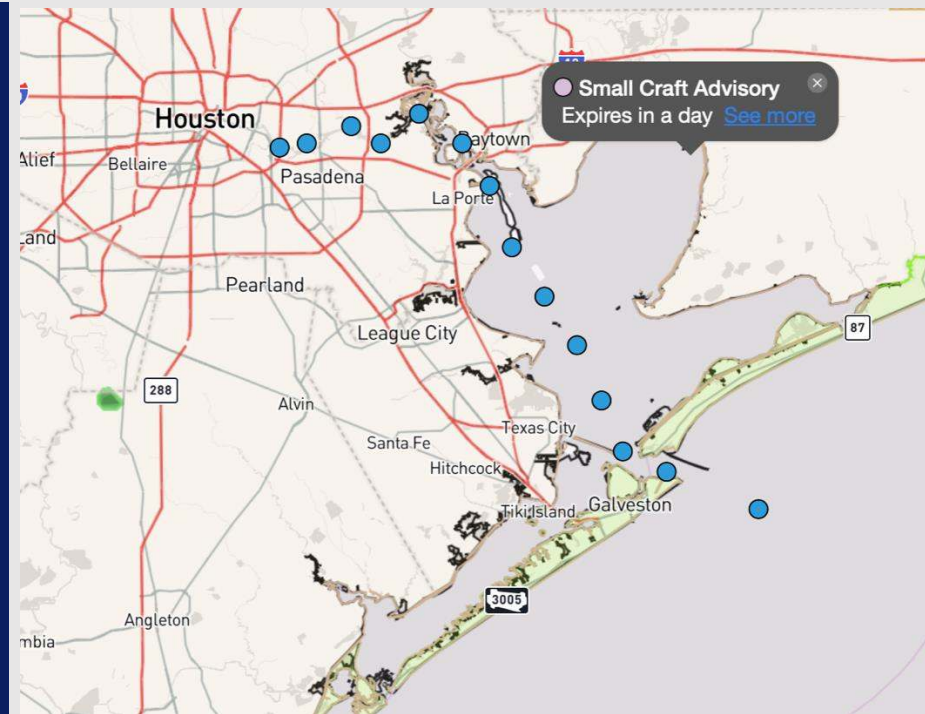
Updated: 1:45 PM CT

Monday, March 3, 2025

Forecaster: Hope Kleitsch

Weather Headlines

- **Yankee Port Conditions are in effect for wave heights increasing to 6– 7 ft at the Boarding Station TUE.**
- [Yankee Port Conditions Video Update](#)
- **Monitoring a risk for patchy sea-fog risk for Stations S. of Morgan's Point through the rest of today and into TUE AM. See visibility slide for more details.**
- **Watching for a strong to severe storm to be possible from 9AM to 2PM Tuesday!**



Current Radar: 1:45 PM CT

As always, please do not hesitate to reach out to us with any forecast questions at **(317)-560-8122**. Press **1** for forecast questions.

You can also access real-time forecast updates and 24/7 meteorological chat assistance on your [Clarity](#) app. Click [here](#) for login assistance.



Houston Pilots Port Trigger Update



Port Condition	34 KTS+ Sustained Wind Trigger Reached at:	6 Foot Wave Trigger Reached at:	Time Remaining/Trigger Ends At:
Victor	---	---	---
Whiskey	---	---	---
X-Ray	---	---	---
Yankee	---	CURRENT	6 PM MON
Zulu	---	6 PM MON	12 AM WED

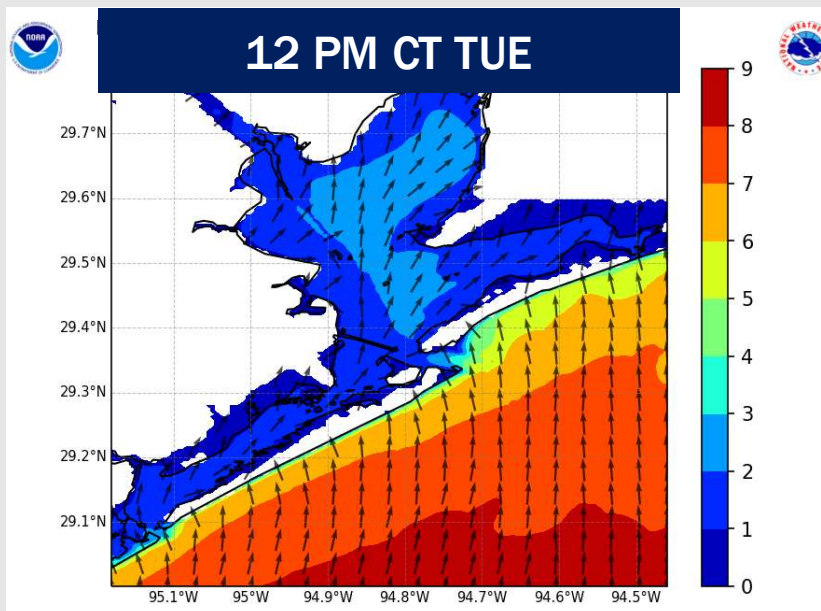
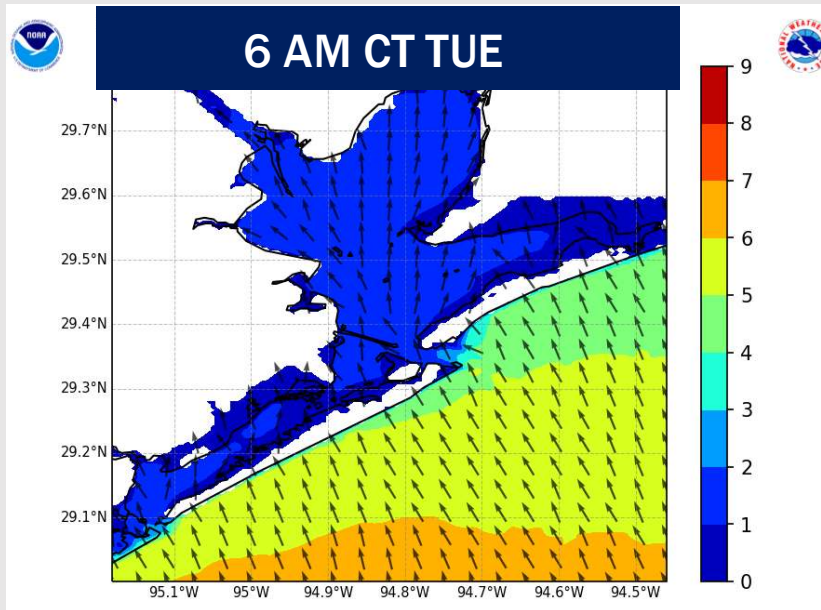
Port Condition	Trigger Definition	Trigger Reached?
Victor	Hurricane entering/developing in Gulf of Mexico that's a threat to the area	N/A
Whiskey	72 hours prior to predicted sustained winds of 34+ KTS	N/A
X-Ray	48 hours prior to predicted sustained winds of 34+ KTS or 6' wave height	PAST
Yankee	24 hours prior to predicted sustained winds of 34+ KTS or 6' wave height	YES
Zulu	12 hours prior to predicted sustained winds of 34+ KTS or 6' wave height	NO

NOTES:

Expecting wave heights to reach 6' to 7' at the Boarding Station after 6 AM on Tuesday due to a passing front.

Wave heights are expected to drop below 6' after 12 AM Wednesday after the front passes, falling below 5' by 9 AM WED and decreasing further beyond that time.

Wave Height Forecast Update



Monitoring a risk for choppy waters / an increase in wave heights for the **Boarding Station** on Tuesday.

By 6 PM MON, wave heights at the Boarding Station will reach ~ 5'.

Wave heights will continue to rise, reaching 6' by 6AM TUE. Wave heights are expected to peak at 6' – 7' by 12PM TUE, before gradually decreasing.

By 12AM WED, wave heights are expected to be below 6', with wave heights not dropping below 5' until 9AM WED.

Houston Pilots Visibility Report



TIMEFRAME DISCUSSED	THREAT
CURRENT- 9 AM TUE	Low

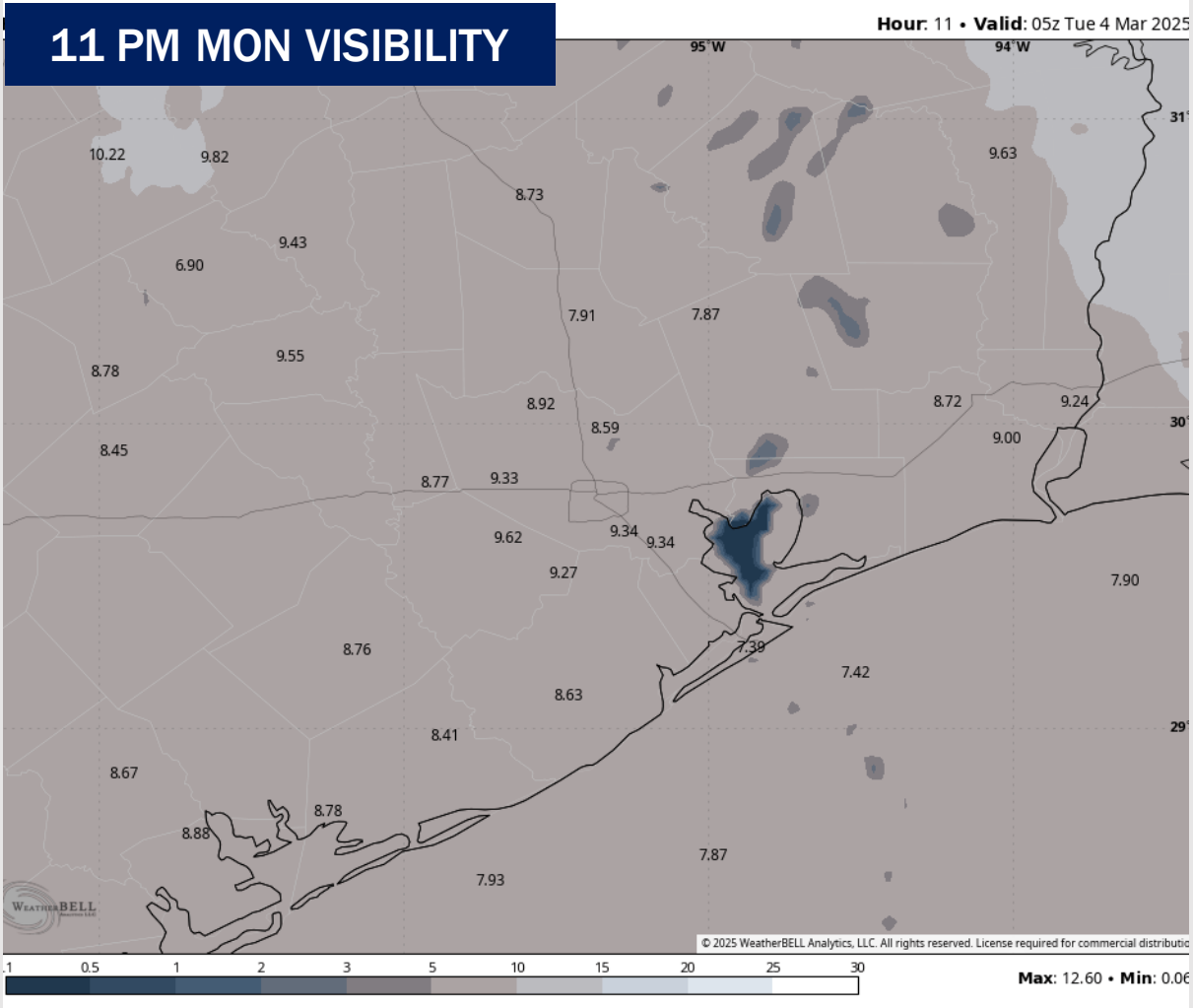
Forecast Confidence

Above Normal Below Normal

Isolated patches of sea fog / hazy conditions will be in play for Stations S of Morgan's Point through ~9 AM TUE before the front passes.

Reduced visibilities of 2 - 3 miles will be possible with a few isolated pockets dropping visibility to 1 mile or less.

Light showers passing throughout the day may help with some mixing keeping the risk of dense fog from becoming widespread, however the light nature of the rain will help with the hazy conditions.



Houston Pilots Extended Range Visibility Report



Thursday 3/6/25

Not favoring any fog risks for Thursday.



Friday 3/7/25

Watching for a low-end risk for non-sea fog for Stations N. of Morgan's Point FRI AM.



Saturday 3/8/25

Watching for sea-fog risks SAT AM to impact all Stations. Confidence on this threat is lower than normal.



Chance for Fog

Thursday AM	Unlikely
Thursday PM	Unlikely
Friday AM	Low-End
Friday PM	Unlikely
Saturday AM	Low-End
Saturday PM	Unlikely

Houston Pilots Visibility Chart (miles)



Forecast Confidence



Visibility	Mon 3 pm	Mon 4 pm	Mon 5 pm	Mon 6 pm	Mon 7 pm	Mon 8 pm	Mon 9 pm	Mon 10 pm	Mon 11 pm	Tue 12 am	Tue 1 am	Tue 2 am	Tue 3 am	Tue 4 am	Tue 5 am	Tue 6 am	Tue 7 am	Tue 8 am	Tue 9 am	Tue 10 am	Tue 11 am	Tue 12 pm	Tue 1 pm	Tue 2 pm
Houston Pilots N - 610 Bridge	10	10	10	10	10	10	10	10	10	10	10	6.9	6.9	5.9	5.9	5.9	6.9	4.9	4.9	4.9	4.9	6.9	10	10
Houston Pilots M - Kinder 1	10	10	10	10	10	10	10	10	10	10	10	6.9	6.9	5.9	5.9	5.9	6.9	4.9	4.9	4.9	4.9	6.9	10	10
Houston Pilots L - Greens Bayou	10	10	10	10	10	10	10	10	10	10	10	6.9	5.9	5.9	5.9	5.9	6.9	4.9	4.9	4.9	4.9	6.9	10	10
Houston Pilots K - Shell Crude	10	10	10	10	10	10	10	10	10	10	10	6.9	5.9	5.9	5.9	5.9	6.9	4.9	4.9	4.9	4.9	6.9	10	10
Houston Pilots J - Lynchburg Ferries	10	10	10	10	10	10	10	10	10	10	10	6.9	5.9	5.9	5.9	5.9	6.9	4.9	4.9	4.9	4.9	6.9	10	10
Houston Pilots I - Exxon 3	10	10	10	10	10	10	10	10	10	10	10	6.9	5.9	5.9	5.9	5.9	6.9	4.9	4.9	4.9	4.9	6.9	10	10
Houston Pilots H - Morgans Point	10	10	10	10	10	3.9	2.5	9	9	9	10	6.9	6.9	5.9	5.9	5.9	6.9	4.9	4.9	4.9	4.9	5.9	10	10
Houston Pilots G - 75/76	10	10	10	10	10	3	2.5	2.5	10	10	10	10	10	6.9	7.9	9	9	5.9	4.9	3.9	3.9	3.9	4.9	10
Houston Pilots F - 63/64	10	10	10	10	10	3	2.5	2.5	10	10	10	10	10	6.9	9	9	10	5.9	4.9	3.9	3.9	3.9	4.9	10
Houston Pilots E - 51/52	9	10	9	9	7.9	5.9	10	10	9	10	10	10	9	7.9	9	9	10	5.9	4.9	3.9	3.9	3.9	3.9	10
Houston Pilots D - 37/38	9	10	9	9	7.9	5.9	10	10	9	10	10	10	9	7.9	9	9	10	5.9	4.9	3.9	3.9	3.9	3.9	10
Houston Pilots C - 25/26	9	10	9	9	7.9	5.9	10	10	9	10	10	10	9	7.9	7.9	9	9	5.9	3.9	3.9	3.9	3.9	3.9	10
Houston Pilots B - 11/12	7.9	9	7.9	7.9	7.9	4.9	9	9	9	9	10	10	9	7.9	7.9	9	9	5.9	3.9	3.9	3.9	3.9	3.9	10
Houston Pilots A - 1 & 2 Bravo	6.9	6.9	6.9	5.9	3.9	4.9	6.9	6.9	6.9	6.9	6.9	6.9	7.9	6.9	9	9	10	5.9	4.9	3.9	3.9	3.9	3.9	10

NOTE: This is automated data that may/may not agree with the official BAM thinking that's found on the daily slides or special visibility report slides. This data should be used as a guide only

Houston Pilots Wind Chart



Sustained wind 10 Knots

Gusts 15 Knots

Wind from the SE

Example

10

15

↙

Wind	Mon 3 pm	Mon 4 pm	Mon 5 pm	Mon 6 pm	Mon 7 pm	Mon 8 pm	Mon 9 pm	Mon 10 pm	Mon 11 pm	Tue 12 am	Tue 1 am	Tue 2 am	Tue 3 am	Tue 4 am	Tue 5 am	Tue 6 am	Tue 7 am	Tue 8 am	Tue 9 am	Tue 10 am	Tue 11 am	Tue 12 pm	Tue 1 pm	Tue 2 pm
Houston Pilots N - 610 Bridge	14 28 ↕	15 28 ↕	15 29 ↕	15 28 ↕	13 28 ↕	13 28 ↕	14 28 ↕	13 26 ↕	14 28 ↕	14 28 ↕	14 28 ↕	15 29 ↕	15 30 ↕	15 30 ↕	16 32 ↕	16 33 ↕	17 35 ↕	18 37 ↕	18 38 ↕	20 39 ↕	20 37 ↕	18 35 ↕	17 32 ↕	17 35 ↕
Houston Pilots M - Kinder 1	14 28 ↕	15 28 ↕	15 29 ↕	15 28 ↕	13 28 ↕	13 28 ↕	13 26 ↕	13 26 ↕	14 28 ↕	14 28 ↕	14 28 ↕	15 29 ↕	15 30 ↕	15 30 ↕	16 32 ↕	16 33 ↕	16 35 ↕	17 37 ↕	18 38 ↕	20 39 ↕	20 38 ↕	18 35 ↕	17 32 ↕	17 35 ↕
Houston Pilots L - Greens Bayou	14 28 ↕	15 28 ↕	15 29 ↕	14 28 ↕	13 26 ↕	13 26 ↕	13 26 ↕	13 26 ↕	14 28 ↕	14 28 ↕	14 28 ↕	15 29 ↕	15 30 ↕	15 30 ↕	16 32 ↕	16 33 ↕	17 33 ↕	18 37 ↕	18 37 ↕	20 39 ↕	20 37 ↕	18 35 ↕	17 32 ↕	17 32 ↕
Houston Pilots K - Shell Crude	14 26 ↕	14 26 ↕	14 29 ↕	14 28 ↕	13 26 ↕	13 26 ↕	13 26 ↕	13 25 ↕	14 26 ↕	14 28 ↕	14 28 ↕	15 29 ↕	15 30 ↕	15 30 ↕	16 31 ↕	16 33 ↕	17 33 ↕	18 37 ↕	18 37 ↕	20 39 ↕	20 38 ↕	18 35 ↕	17 32 ↕	17 32 ↕
Houston Pilots J - Lynchburg Ferries	14 26 ↕	15 26 ↕	15 29 ↕	14 28 ↕	13 26 ↕	13 26 ↕	13 26 ↕	13 26 ↕	14 28 ↕	14 28 ↕	14 28 ↕	15 29 ↕	15 30 ↕	15 30 ↕	16 31 ↕	16 32 ↕	17 33 ↕	18 36 ↕	18 37 ↕	20 39 ↕	20 38 ↕	18 35 ↕	17 31 ↕	17 31 ↕
Houston Pilots I - Exxon 3	15 26 ↕	16 26 ↕	17 28 ↕	17 26 ↕	16 25 ↕	17 25 ↕	17 26 ↕	17 26 ↕	18 28 ↕	18 28 ↕	20 28 ↕	20 29 ↕	21 30 ↕	21 30 ↕	21 31 ↕	22 31 ↕	22 32 ↕	22 35 ↕	23 36 ↕	23 37 ↕	23 36 ↕	21 35 ↕	20 31 ↕	20 31 ↕
Houston Pilots H - Morgans Point	15 25 ↕	16 26 ↕	16 26 ↕	16 26 ↕	16 25 ↕	16 25 ↕	17 25 ↕	17 25 ↕	17 26 ↕	18 26 ↕	18 28 ↕	20 28 ↕	20 29 ↕	20 29 ↕	20 30 ↕	20 30 ↕	20 31 ↕	22 33 ↕	22 36 ↕	22 36 ↕	22 36 ↕	21 35 ↕	20 31 ↕	18 31 ↕
Houston Pilots G - 75/76	16 26 ↕	17 26 ↕	17 28 ↕	17 26 ↕	17 26 ↕	17 26 ↕	18 28 ↕	20 28 ↕	20 29 ↕	20 29 ↕	22 29 ↕	22 30 ↕	22 31 ↕	22 31 ↕	22 32 ↕	22 33 ↕	22 36 ↕	24 37 ↕	25 38 ↕	25 38 ↕	24 38 ↕	22 36 ↕	21 32 ↕	20 32 ↕
Houston Pilots F - 63/64	16 26 ↕	16 26 ↕	17 26 ↕	17 26 ↕	17 25 ↕	17 25 ↕	18 26 ↕	18 26 ↕	20 28 ↕	20 29 ↕	20 29 ↕	21 30 ↕	22 30 ↕	22 31 ↕	22 31 ↕	22 32 ↕	22 32 ↕	24 36 ↕	24 37 ↕	24 37 ↕	24 37 ↕	22 36 ↕	21 32 ↕	21 32 ↕
Houston Pilots E - 51/52	15 25 ↕	15 25 ↕	16 25 ↕	17 25 ↕	17 25 ↕	17 25 ↕	17 26 ↕	18 26 ↕	18 28 ↕	20 29 ↕	20 29 ↕	21 29 ↕	21 30 ↕	21 31 ↕	21 31 ↕	21 31 ↕	22 32 ↕	23 35 ↕	24 37 ↕	24 38 ↕	24 37 ↕	23 36 ↕	22 33 ↕	21 32 ↕
Houston Pilots D - 37/38	15 24 ↕	15 25 ↕	15 25 ↕	16 24 ↕	16 24 ↕	17 25 ↕	17 26 ↕	17 26 ↕	18 28 ↕	18 29 ↕	20 29 ↕	21 30 ↕	21 31 ↕	21 31 ↕	21 32 ↕	21 32 ↕	21 35 ↕	23 37 ↕	24 38 ↕	24 38 ↕	24 37 ↕	23 36 ↕	22 35 ↕	21 33 ↕
Houston Pilots C - 25/26	15 24 ↕	15 24 ↕	15 24 ↕	15 24 ↕	15 24 ↕	16 25 ↕	17 26 ↕	17 26 ↕	17 28 ↕	18 29 ↕	18 29 ↕	20 30 ↕	20 31 ↕	21 31 ↕	21 32 ↕	21 32 ↕	21 35 ↕	22 37 ↕	24 38 ↕	24 38 ↕	24 37 ↕	24 37 ↕	23 35 ↕	22 33 ↕
Houston Pilots B - 11/12	14 22 ↕	14 23 ↕	15 23 ↕	15 23 ↕	15 23 ↕	15 24 ↕	16 25 ↕	16 26 ↕	17 26 ↕	17 28 ↕	17 28 ↕	18 29 ↕	18 30 ↕	20 30 ↕	20 31 ↕	20 31 ↕	20 33 ↕	22 36 ↕	22 36 ↕	23 37 ↕	23 37 ↕	23 36 ↕	22 35 ↕	21 33 ↕
Houston Pilots A - 1 & 2 Bravo	15 23 ↕	15 24 ↕	15 24 ↕	16 24 ↕	16 25 ↕	17 26 ↕	17 28 ↕	18 29 ↕	20 29 ↕	20 29 ↕	20 31 ↕	21 32 ↕	21 32 ↕	21 32 ↕	21 32 ↕	21 32 ↕	21 35 ↕	22 37 ↕	24 38 ↕	24 38 ↕	25 40 ↕	26 40 ↕	25 40 ↕	24 38 ↕

NOTE: This is automated data that may/may not agree with the official BAM thinking that's found on the daily slides. This data should be used as a guide only.

Houston Pilots: MON. 3/3/2025



Forecast Discussion

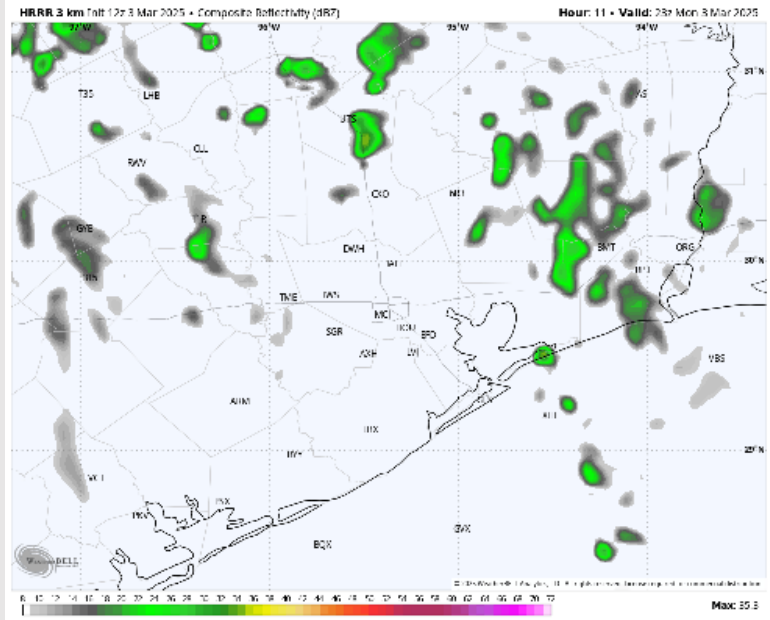
Precip: Isolated (20-30%) light showers in play throughout the rest of the day.

Wind: Winds will be out of the SE throughout the remainder of the day. **N of Morgan's Point:** Winds will be at 5 – 10 kts throughout the rest of the PM. **S of Morgan's Point:** Winds will be at 8 – 13 kts for the rest of the day. **Gusts of 20 – 25 kts will be possible for All Stations for the rest of the day.**

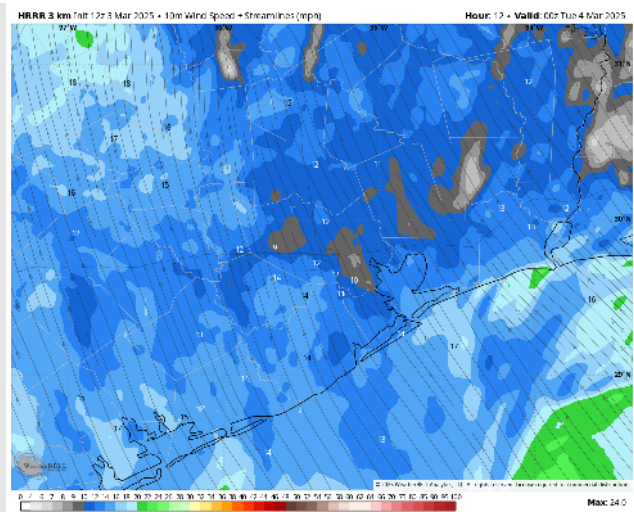
Low Temps: **N of Morgan's Point:** Upper 60s F. **S of Morgan's Point:** Low to mid 60s F.

Visibility: Favoring sea fog/hazy conditions for Stations S. of Morgan's Point for the rest of today and into TUE AM. See visibility slide for more details.

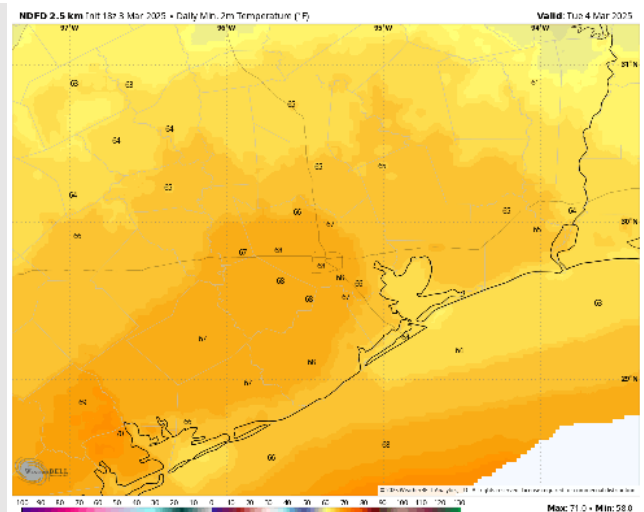
Precip Image: 5 PM CT



Wind Speed:
6 PM CT



Low Temps
TUE AM



Houston Pilots: TUE. 3/4/2025



Forecast Discussion

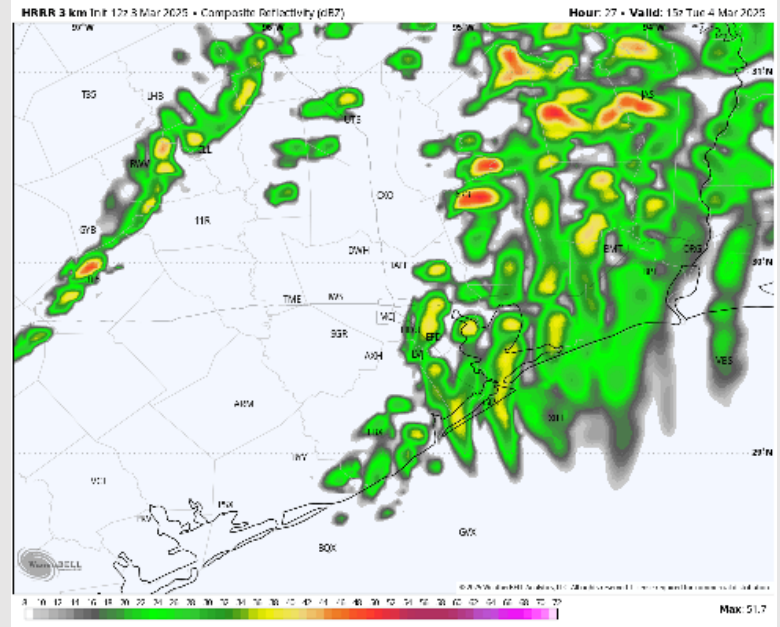
Precip: Periods of drizzle / light rain will be expected through 7AM (40%). From 7AM - 2PM, expect widespread downpours and storms (80%). A few storms will be capable of producing gusts of 40 - 50 kts, small hail, and an isolated tornado from 9AM to 2PM.

Wind: Winds will be out of the S/SSE through 2PM before gradually veering out of the SW / WSW throughout the afternoon into evening. **N of Morgan's Point:** Winds will be at 15 - 20 kts through 7PM before decreasing to 10 - 15 kts for the remainder of Tuesday. **S of Morgan's Point:** Winds will be 20 - 25 kts through 8PM before decreasing to 15- 20 kts for the remainder of Tuesday. **Non-thunderstorm gusts of 20-25kts will be possible throughout the day for all Stations. Gusts of 30 - 35 kts will be possible from 6AM to 4PM.**

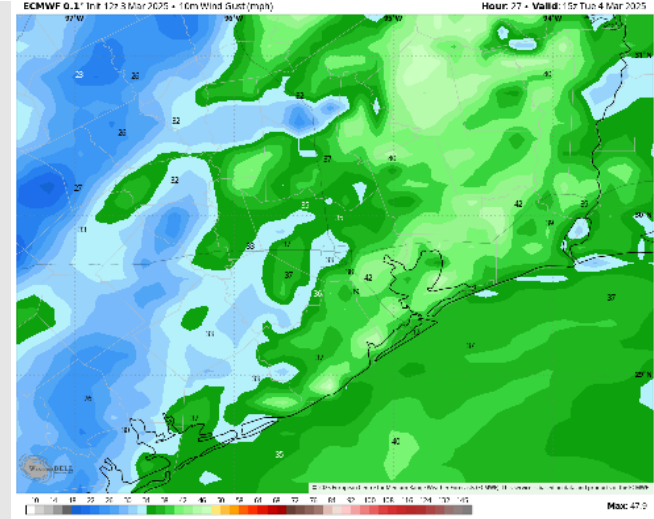
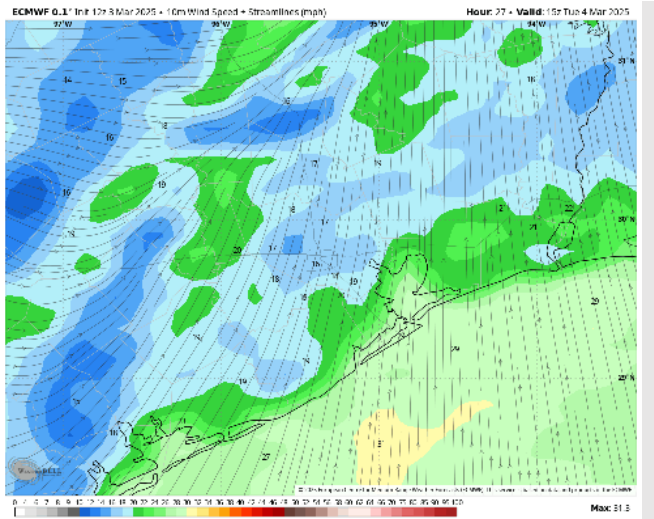
High Temps: **N of Morgan's Point:** Upper 70s F. **S of Morgan's Point:** Lower 70s F.

Visibility: Isolated sea fog / hazy conditions favored to continue into TUE AM. See visibility slide for more details.

Precip Image: 9 AM CT



Wind Speed
9 AM CT



MAX WIND
GUSTS

Houston Pilots: WED. 3/5/2025



Forecast Discussion

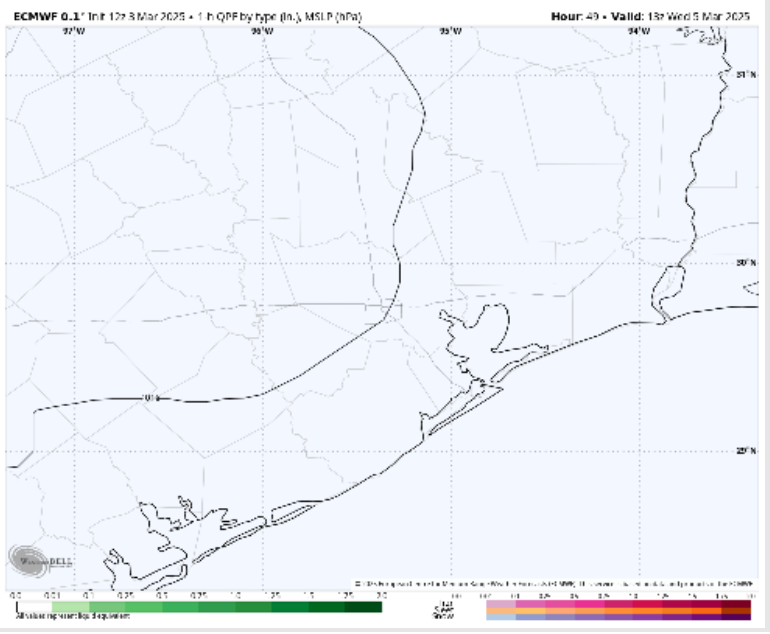
Precip: Favoring dry conditions for Wednesday.

Wind: Winds will be out of the NW throughout the day. **N of Morgan's Point:** Winds will be at 3 – 8 kts throughout Wednesday. **S of Morgan's Point:** Winds will be at 15 – 20 kts for Wednesday. **Wind gusts of 20 – 25 kts will be possible for all Stations after 5AM. Gusts near 30 kts will be possible for Stations S. of Morgan's Point from 6AM – 12PM.**

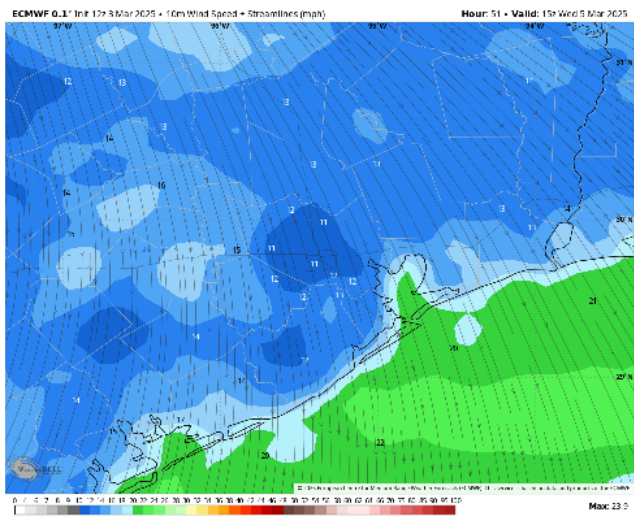
High Temps: **N of Morgan's Point:** Upper 60s F. **S of Morgan's Point:** Low to mid 60s F.

Visibility: Not favoring any fog concerns for Wednesday.

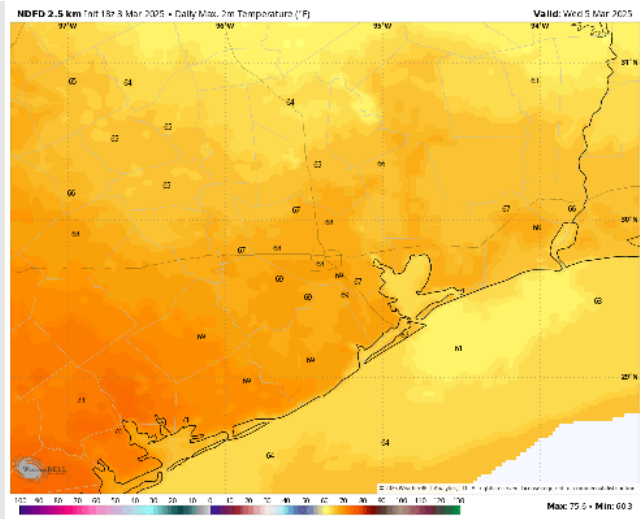
Precip Image: 7 AM CT



**Wind Speed:
9 AM CT**



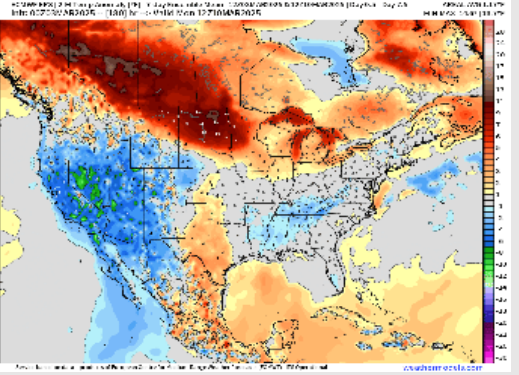
**High Temps
Wednesday**



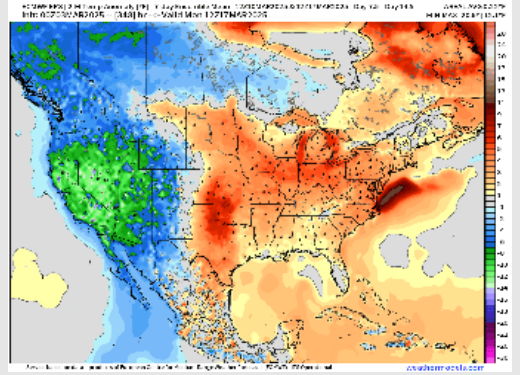
Houston Pilots: 3/3/25



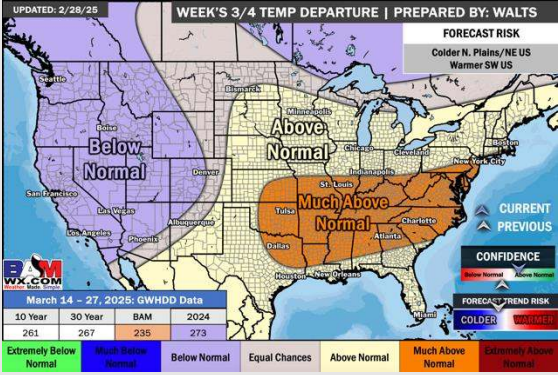
Next 7 Day Temperature Departure



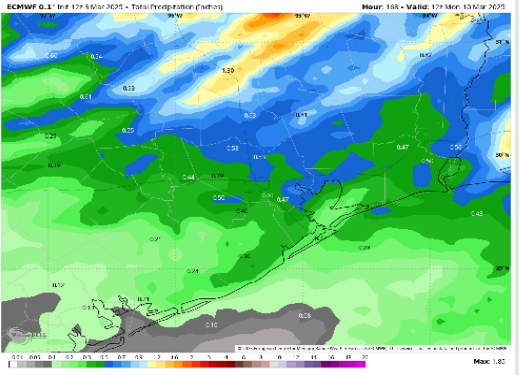
8-14 Day Temperature Departure



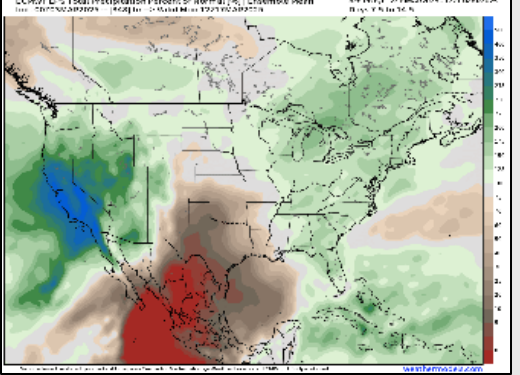
15-30 Day Temperature Departure



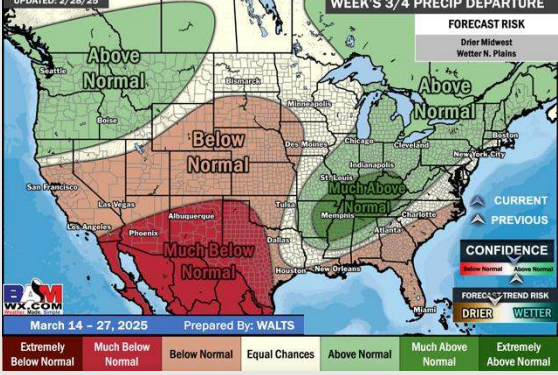
Next 7 Day Total Precipitation



8-14 Day % of Average Precip.



15-30 Day % of Average Precip.



- Temps are expected to be near normal for the next 7 days. Scattered rain chances are favored throughout the week.
- Above normal temps and below normal rainfall are expected for week 2.
- Above normal temperatures and below normal precipitation chances are expected for the weeks 3/4 timeframe.