

Houston Pilots Forecast Package



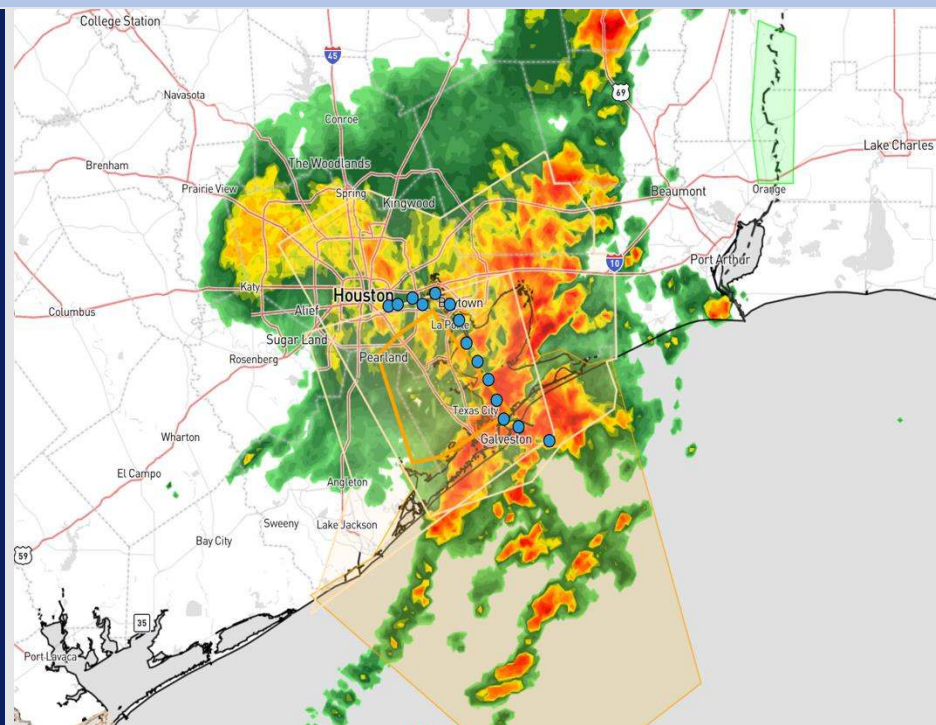
Updated: 10:45 PM CT

Monday, March 24, 2025

Forecaster: Tyler Riggles

Weather Headlines

- **Sea Fog Risk has dissipated this AM, but widespread storms are ongoing (some strong to severe).**
- **Outside of ongoing stronger storms, winds not expected to exceed 10 kts over the 72 hours.**



Current Radar 3:28 AM CT

As always, please do not hesitate to reach out to us with any forecast questions at **(317)-560-8122**. Press 1 for forecast questions.

You can also access real-time forecast updates and 24/7 meteorological chat assistance on your [Clarity](#) app. Click [here](#) for login assistance.

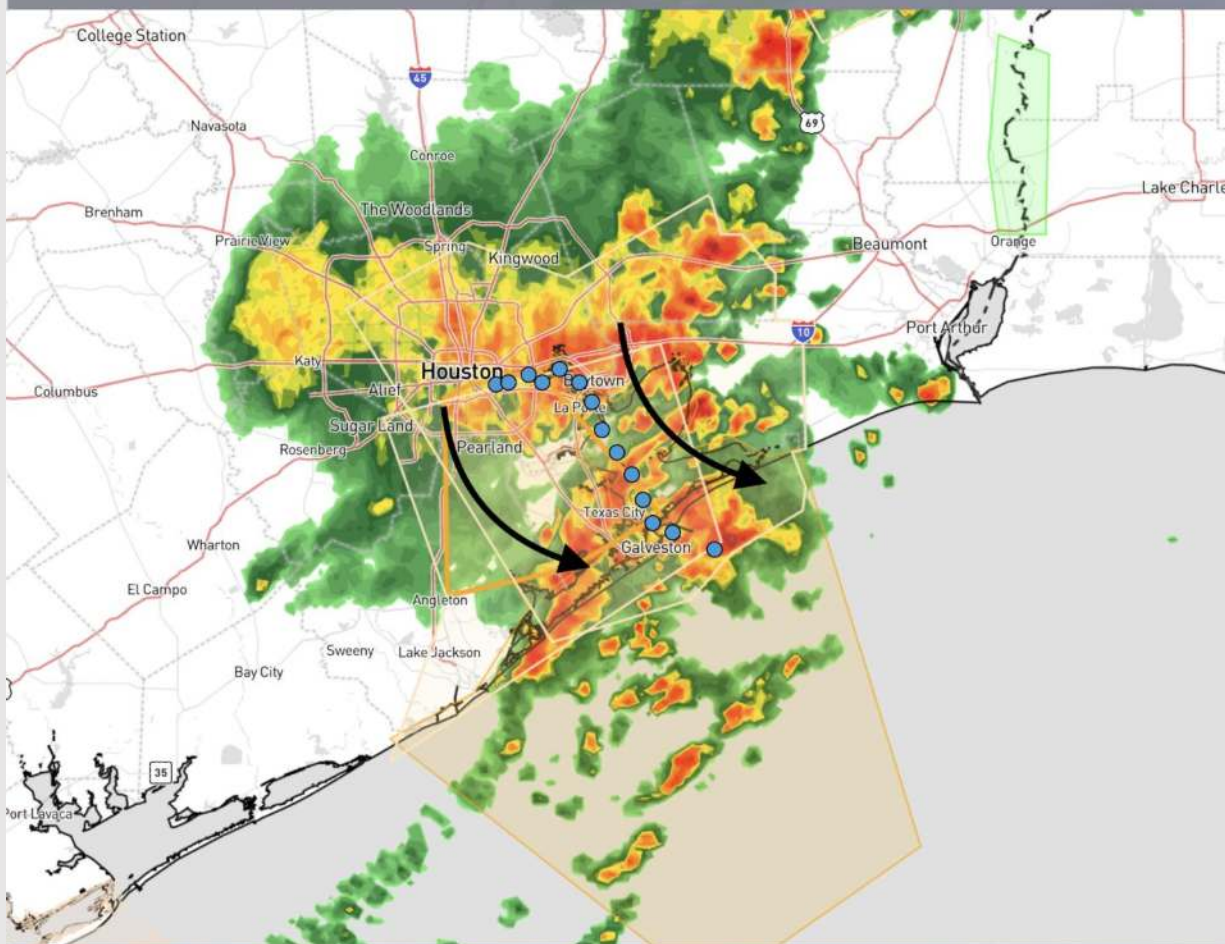




Strong to Severe Storm Threat

Current: 3:22 AM CT 3/24/25

Forecaster: Griffin



FORECAST NOTES:

- ✓ Strong to severe storms will be possible through roughly 4:30 – 5 AM this morning.
- ✓ Wind gusts of 40 to 60 mph will be possible until storms to the north pass through to the south.
- ✓ Overall threat will clear from north to south this AM.



Houston Pilots Extended Range Visibility Report



Thursday 3/27/25

No fog concerns for Thursday.

Forecast Confidence



Saturday 3/29/25

No fog concerns for Saturday, however visibility can be reduced under heavy downpours

Forecast Confidence



Friday 3/28/25

No fog concerns for Friday, however visibility can be reduced under heavy downpours

Forecast Confidence



Chance for Fog

Thursday AM	Unlikely
Thursday PM	Unlikely
Friday AM	Unlikely
Friday PM	Unlikely
Saturday AM	Unlikely
Saturday PM	Unlikely

Houston Pilots Visibility Chart (miles)



Visibility	Mon 5 am	Mon 6 am	Mon 7 am	Mon 8 am	Mon 9 am	Mon 10 am	Mon 11 am	Mon 12 pm	Mon 1 pm	Mon 2 pm	Mon 3 pm	Mon 4 pm	Mon 5 pm	Mon 6 pm	Mon 7 pm	Mon 8 pm	Mon 9 pm	Mon 10 pm	Mon 11 pm	Tue 12 am	Tue 1 am	Tue 2 am	Tue 3 am	Tue 4 am
Houston Pilots N - 610 Bridge	3	2.9	2.5	2	2.5	3.9	6.9	10	10	10	10	10	10	10	10	10	10	10	7.9	5.9	4.9	3.9	0.5	0.2
Houston Pilots M - Kinder 1	3	2.9	2.5	2	2.5	3.9	6.9	10	10	10	10	10	10	10	10	10	10	10	7.9	5.9	4.9	3.9	0.5	0.2
Houston Pilots L - Greens Bayou	3	2.9	2.5	2	1.1	3.9	6.9	10	10	10	10	10	10	10	10	10	10	10	7.9	5.9	4.9	3.9	0.5	0.2
Houston Pilots K - Shell Crude	3	2.9	2.5	2	1.1	3.9	6.9	9	10	10	10	10	10	10	10	10	10	9	6.9	5.9	4.9	3.9	0.5	0.2
Houston Pilots J - Lynchburg Ferries	3	1.6	2.5	2.5	1.1	3.9	6.9	10	10	10	10	10	10	10	10	10	10	10	7.9	5.9	4.9	3.9	0.5	0.2
Houston Pilots I - Exxon 3	3	1.6	2.5	2.5	2.5	3.9	6.9	9	10	10	10	10	10	10	10	10	10	9	6.9	5.9	4.9	3.9	0.5	0.2
Houston Pilots H - Morgans Point	3	2.9	2.9	2.5	2.5	2.9	6.9	9	10	10	10	10	10	10	10	10	10	9	6.9	5.9	4.9	3.9	0.5	0.2
Houston Pilots G - 75/76	3	2.9	2.5	2.5	2	2.9	5.9	7.9	9	5.9	6.9	10	10	10	10	10	10	6.9	6.9	3.9	2.9	3.9	0.2	0.2
Houston Pilots F - 63/64	3	2.9	2	2.5	2	2.9	4.9	6.9	9	3.9	6.9	10	10	10	10	10	10	7.9	6.9	4.9	3.9	3.9	0.2	0.2
Houston Pilots E - 51/52	3	1.6	2	1.6	0.3	1.1	2.9	4.9	9	9	6.9	10	10	10	10	10	10	7.9	6.9	4.9	3.9	3.9	0	0.2
Houston Pilots D - 37/38	3	1.6	2	1.1	0.3	0.3	2.9	3.9	9	9	6.9	10	10	10	10	10	10	7.9	6.9	4.9	3.9	3.9	0	0.2
Houston Pilots C - 25/26	3	2	2	1.1	0.3	0.3	2.9	5.9	9	9	9	10	10	10	10	10	10	7.9	6.9	4.9	3.9	3.9	0	0.2
Houston Pilots B - 11/12	2.5	2	2	0.8	0.3	0.3	0.5	2.9	1.6	6.9	4.9	5.9	1.1	6.9	6.9	5.9	5.9	4.9	3.9	2.9	0.8	0.5	0	0.2
Houston Pilots A - 1 & 2 Bravo	0.5	1.1	0.5	0.3	0.3	0.3	0.3	0.8	0.8	0.8	0.8	0.5	0.5	0.5	1.1	1.1	1.1	0.8	0.5	0.5	0.5	0.3	0	0.2

NOTE: This is automated data that may/may not agree with the official BAM thinking that's found on the daily slides or special visibility report slides. This data should be used as a guide only

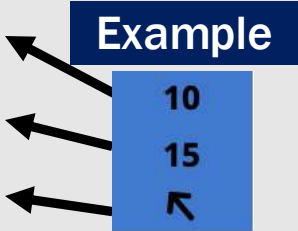
Houston Pilots Wind Chart



Sustained wind 10 Knots

Gusts 15 Knots

Wind from the SE



Wind	Mon 12 am	Mon 1 am	Mon 2 am	Mon 3 am	Mon 4 am	Mon 5 am	Mon 6 am	Mon 7 am	Mon 8 am	Mon 9 am	Mon 10 am	Mon 11 am	Mon 12 pm	Mon 1 pm	Mon 2 pm	Mon 3 pm	Mon 4 pm	Mon 5 pm	Mon 6 pm	Mon 7 pm	Mon 8 pm	Mon 9 pm	Mon 10 pm	Mon 11 pm
Houston Pilots N - 610 Bridge	6 13 ↑	5 10 ↑	3 9 ↑	3 8 →	3 7 ↑	3 7 ↑	3 7 ↓	3 7 ↓	3 8 ↓	3 8 ↓	5 9 ↓	6 10 ↓	6 10 ↓	6 12 ↓	6 10 ↓	6 12 ↓	6 12 ←	6 12 ←	6 12 ←	6 12 ←	6 10 ↖	6 9 ↖	5 9 ↖	3 9 ↑
Houston Pilots M - Kinder 1	6 13 ↑	5 10 ↑	3 9 ↑	3 8 →	3 7 ↑	3 7 ↑	3 7 ↓	3 7 ↓	3 8 ↓	3 8 ↓	5 9 ↓	6 10 ↓	6 10 ↓	6 12 ↓	6 10 ↓	6 12 ↓	6 12 ←	6 12 ←	6 12 ←	6 12 ←	6 10 ↖	6 9 ↖	5 9 ↖	3 9 ↑
Houston Pilots L - Greens Bayou	6 12 ↑	5 9 ↑	3 9 ↑	3 8 →	3 7 ↑	3 7 ↑	3 7 ↓	3 7 ↓	3 8 ↓	3 8 ↓	5 9 ↓	5 10 ↓	6 10 ↓	6 12 ↓	6 10 ↓	6 12 ↓	6 12 ←	6 12 ←	6 12 ←	6 12 ←	6 10 ↖	6 9 ↖	5 9 ↖	3 8 ↑
Houston Pilots K - Shell Crude	6 12 ↑	5 9 ↑	3 8 ↑	3 8 →	3 7 ↑	3 7 ↑	3 7 ↓	3 7 ↓	3 7 ↓	3 8 ↓	5 9 ↓	5 9 ↓	6 10 ↓	6 12 ↓	6 10 ↓	6 12 ↓	6 12 ←	6 12 ←	6 13 ←	6 12 ←	6 10 ↖	6 9 ↖	5 9 ↖	3 8 ↑
Houston Pilots J - Lynchburg Ferries	6 12 ↑	5 9 ↑	3 8 ↑	3 7 ↑	3 7 ↑	3 7 ↑	3 6 ↓	3 7 ↓	3 7 ↓	3 8 ↓	3 8 ↓	5 9 ↓	6 10 ↓	6 12 ↓	6 10 ↓	6 12 ↓	6 10 ←	6 12 ←	6 12 ←	6 12 ←	6 10 ↖	6 9 ↖	5 8 ↖	3 8 ↑
Houston Pilots I - Exxon 3	8 12 ↑	6 10 ↑	6 9 ↑	5 8 ↑	5 7 ↑	5 7 ↑	5 7 ↓	5 7 ↓	5 8 ↓	6 8 ↓	6 9 ↓	6 9 ↓	6 10 ↓	6 12 ↓	6 12 ↓	7 13 ↓	7 13 ←	8 13 ←	8 13 ←	8 13 ←	8 13 ←	7 10 ↖	6 9 ↖	6 9 ↑
Houston Pilots H - Morgans Point	8 12 ↑	6 9 ↑	6 9 ↑	5 8 ↑	5 7 ↑	5 7 ↑	3 7 ↓	5 7 ↓	5 8 ↓	5 8 ↓	6 9 ↓	6 9 ↓	6 10 ↓	6 12 ↓	6 12 ↓	7 13 ↓	7 13 ←	8 13 ←	8 14 ←	8 13 ←	8 13 ←	7 10 ↖	6 9 ↖	6 9 ↑
Houston Pilots G - 75/76	8 13 ↑	7 10 ↑	6 9 ↑	6 9 ↑	6 7 ↑	6 7 ↑	5 7 →	5 7 ↓	6 8 ↓	6 8 ↓	6 9 ↓	6 10 ↓	6 10 ↓	7 12 ↓	7 13 ↓	7 13 ↓	8 14 ↓	8 14 ←	8 14 ←	8 14 ←	9 13 ←	8 12 ↖	7 10 ↖	6 9 ↑
Houston Pilots F - 63/64	8 13 ↑	7 10 ↑	6 9 ↑	6 9 ↑	6 8 ↑	6 7 ↑	5 7 ↑	6 7 ↓	6 8 ↓	6 8 ↓	6 9 ↓	6 10 ↓	6 10 ↓	6 12 ↓	7 12 ↓	7 13 ↓	8 13 ↓	8 14 ↓	8 14 ↓	8 14 ↓	8 13 ↖	8 12 ↖	7 10 ↖	6 9 ↑
Houston Pilots E - 51/52	8 13 ↑	7 10 ↑	6 9 ↑	6 9 ↑	6 8 ↑	6 7 ↑	5 7 ↑	5 7 ↓	6 8 ↓	6 8 ↓	6 9 ↓	6 9 ↓	6 10 ↓	7 12 ↓	7 12 ↓	7 13 ↓	8 14 ↓	8 14 ↓	8 14 ↓	8 13 ↖	8 12 ↖	8 10 ↖	7 9 ↖	6 9 ↑
Houston Pilots D - 37/38	8 13 ↑	7 10 ↑	6 9 ↑	6 9 ↑	6 8 ↑	6 8 ↑	5 7 ↑	5 7 ↓	6 8 ↓	6 8 ↓	6 9 ↓	6 9 ↓	7 10 ↓	7 12 ↓	7 12 ↓	7 13 ↓	8 13 ↓	8 14 ↓	8 13 ↓	8 13 ↓	8 12 ↖	7 10 ↖	6 9 ↖	6 9 ↑
Houston Pilots C - 25/26	8 13 ↑	7 10 ↑	6 9 ↑	6 9 ↑	6 8 ↑	6 8 ↑	5 7 ↑	5 7 ↓	6 8 ↓	6 8 ↓	6 9 ↓	6 9 ↓	6 10 ↓	7 12 ↓	7 12 ↓	7 13 ↓	8 13 ↓	8 13 ↓	8 13 ↓	8 12 ↖	8 12 ↖	7 9 ↖	6 9 ↖	6 9 ↑
Houston Pilots B - 11/12	8 13 ↑	7 10 ↑	6 9 ↑	6 9 ↑	6 8 ↑	6 8 ↑	5 7 ↑	5 7 ↓	6 8 ↓	6 8 ↓	6 9 ↓	6 9 ↓	6 9 ↓	7 12 ↓	7 10 ↓	7 12 ↓	8 13 ↓	8 12 ↓	8 12 ↓	7 12 ↓	7 10 ↖	6 9 ↖	6 9 ↖	6 9 ↑
Houston Pilots A - 1 & 2 Bravo	9 14 ↑	8 13 ↑	8 12 ↑	7 10 ↑	7 10 ↑	6 9 ↑	6 9 ↑	6 8 ↑	6 8 →	6 8 ↓	6 9 ↓	6 9 ↓	6 10 ↓	7 10 ↓	7 10 ↓	7 12 ↓	7 10 ↓	7 12 ↓	7 12 ↓	8 12 ↓	7 10 ↖	7 9 ↖	6 9 ↖	6 9 ↑

NOTE: This is automated data that may/may not agree with the official BAM thinking that's found on the daily slides.

This data should be used as a guide only.

Forecast Discussion

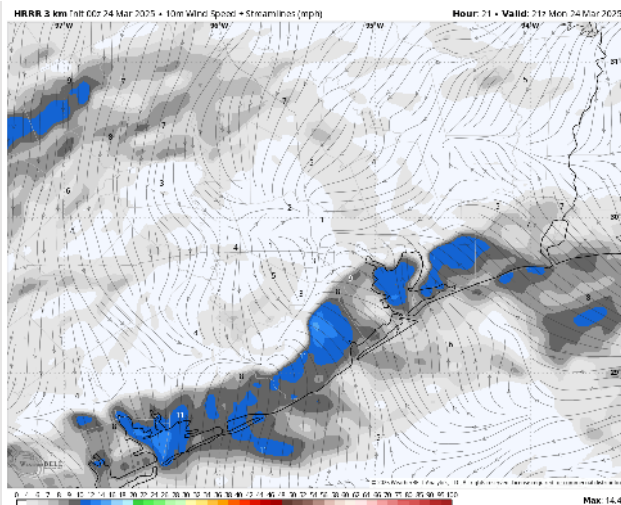
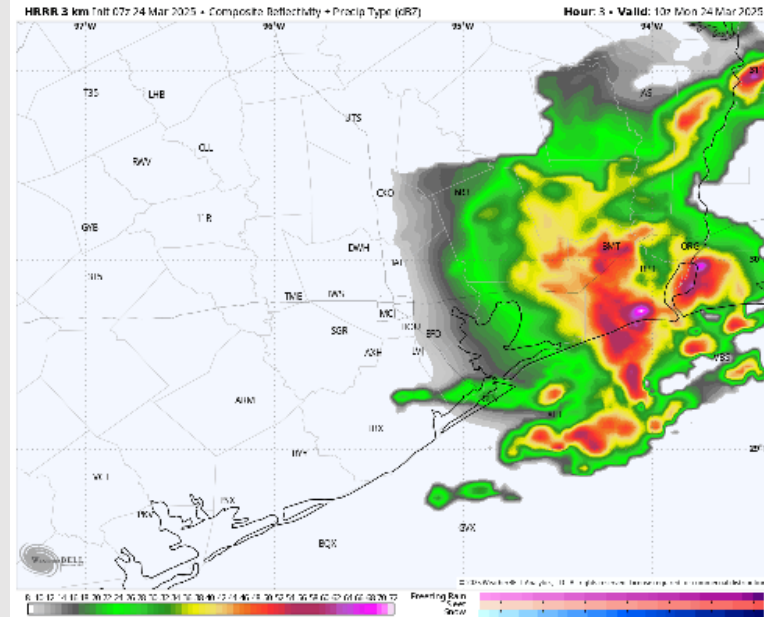
Precip: Storms will start to exit early this by roughly 5 AM with dry conditions favored thereafter.

Wind: Winds will be out of the SSW through 6 AM, becoming variable in direction through 4 PM before settling out of the SSE. **N of Morgan's Point:** Winds will be at 3 – 8 kts throughout the day. **S of Morgan's Point:** Winds will be at 3 – 8 kts through 4 PM, increasing to 5 - 10 kts through the rest of the day. Stronger wind gusts of 40 – 60 mph will be possible with storms this AM.

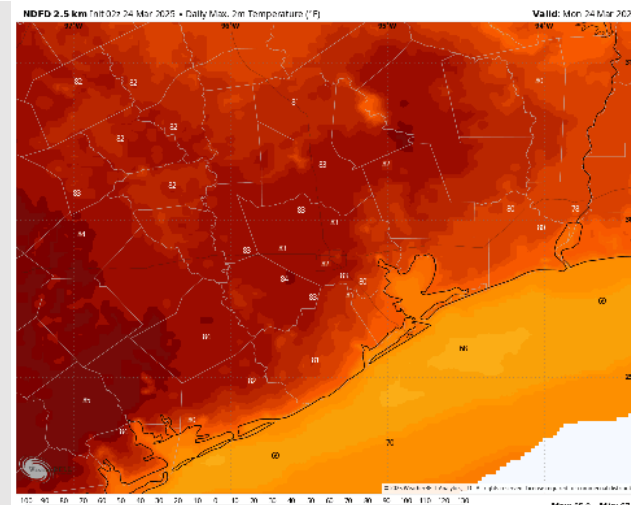
High Temps: **N of Morgan's Point:** Low 80s F. **S of Morgan's Point:** Mid 70s F.

Visibility: Watching for sea fog risks to post 7 PM for stations near the boarding station with additional sea fog risks into TUE AM.

Precip Image: 5 AM CT



Wind Speed:
9 AM CT



High Temps
Today

Houston Pilots: TUE. 3/25/2025

Forecast Discussion

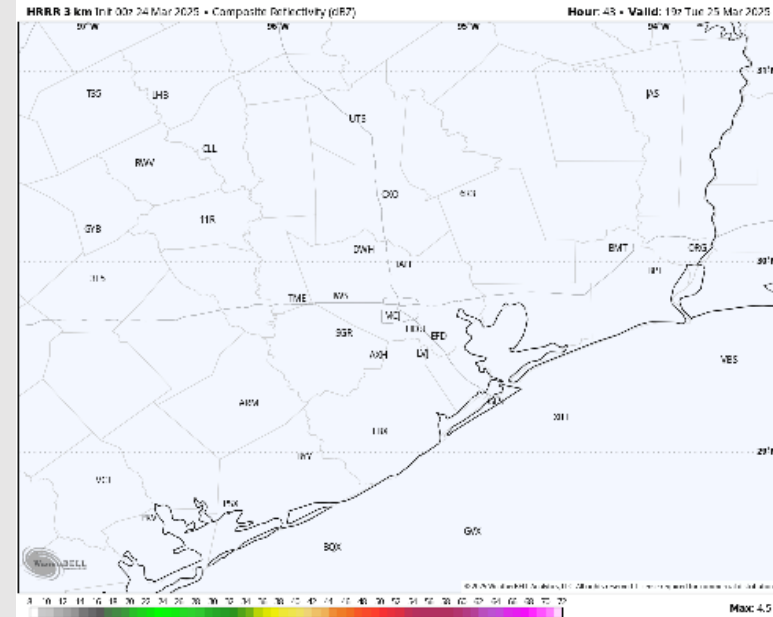
Precip: Favoring dry conditions for Tuesday.

Wind: Winds will be variable through 10 AM before settling out of the SSE for Tuesday. **N of Morgan's Point:** Winds will be at 2 – 7 kts throughout the day. **S of Morgan's Point:** Winds will be at 2 - 7 kts through 4 PM, increasing slightly to 4 – 9 kts after that time.

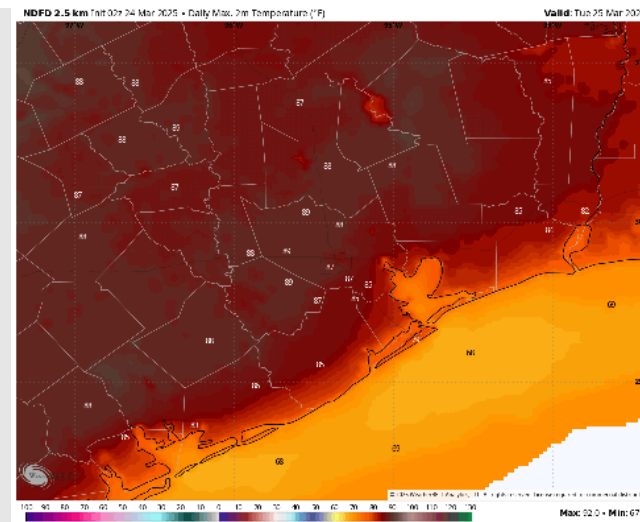
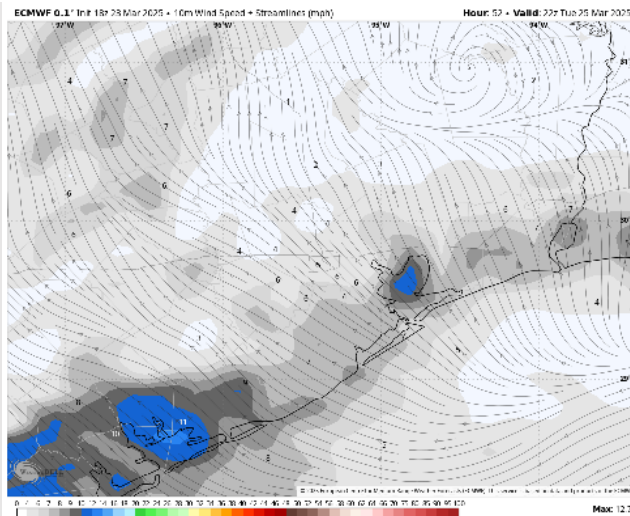
High Temps: **N of Morgan's Point:** Mid to high 80s F. **S of Morgan's Point:** Mid to High 70s F.

Visibility: Monitoring for sea fog risks for all stations through the AM hours TUE.

Precip Image: 2 PM CT



Wind Speed
5 PM CT



High Temps
Tuesday

Houston Pilots: WED. 3/26/2025

Forecast Discussion

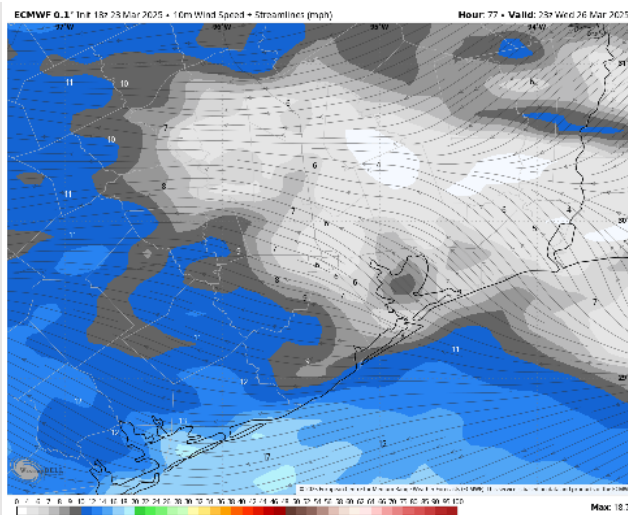
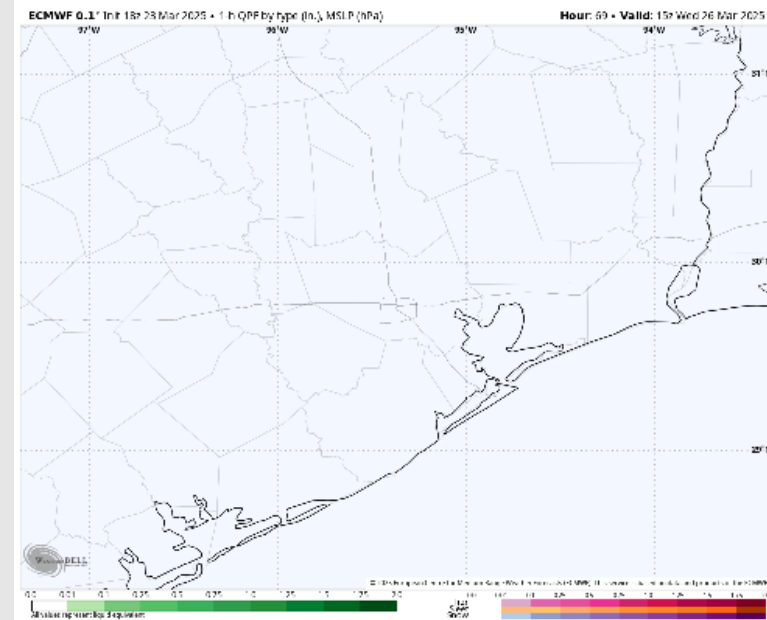
Precip: Dry conditions favored for Wednesday.

Wind: Winds will be out of the SSE through 5 AM, becoming variable through 5 PM before settling out of the SE again. **N of Morgan's Point:** Winds will be at 2 – 7 kts throughout the day. **S of Morgan's Point:** Winds will be at 4 – 9 kts throughout the day.

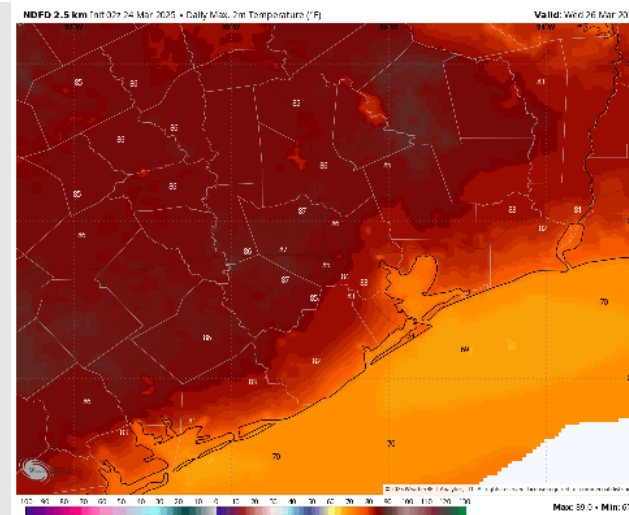
High Temps: **N of Morgan's Point:** Mid 80s F. **S of Morgan's Point:** Mid 70s F.

Visibility: Monitoring a low-end fog/mist risk for all Stations WED AM.

Precip Image: 10 AM CT



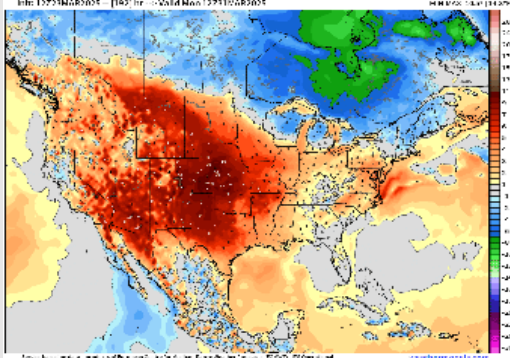
Wind Speed:
6 PM CT



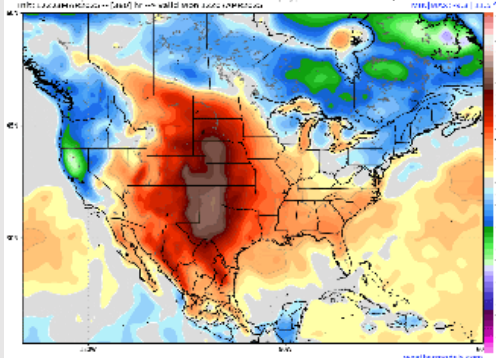
High Temps
Wednesday

Houston Pilots: 3/24/25

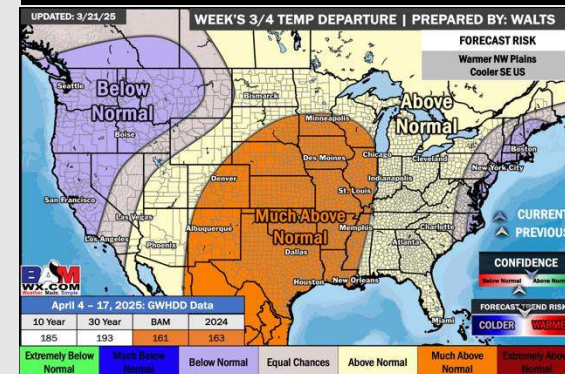
Next 7 Day Temperature Departure



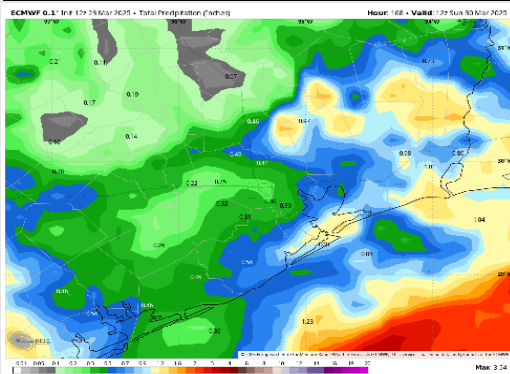
8-14 Day Temperature Departure



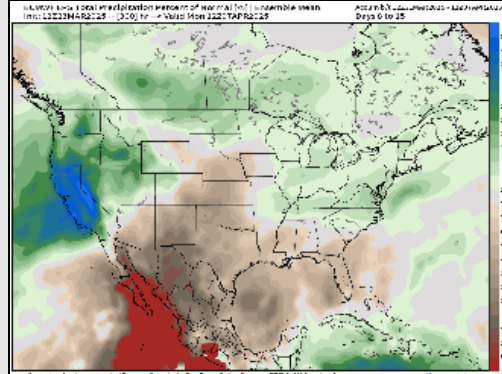
15-30 Day Temperature Departure



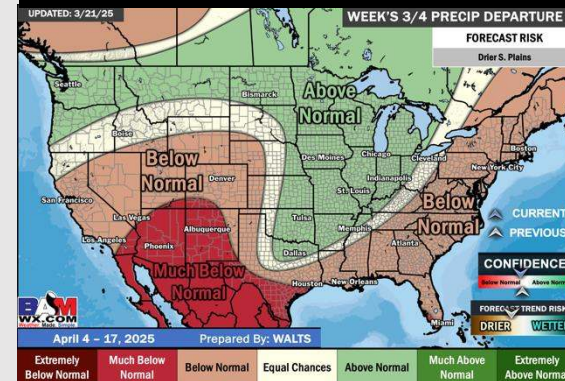
Next 7 Day Total Precipitation



8-14 Day % of Average Precip.



15-30 Day % of Average Precip.



- Temps are expected to be above normal for the next 7 days. Scattered rain chances favored throughout the week.
- Above normal temps and below normal rainfall are expected for week 2.
- Much above normal temperatures and below to much below normal precipitation chances are expected for the weeks $\frac{3}{4}$ timeframe.