

Houston Pilots Forecast Package



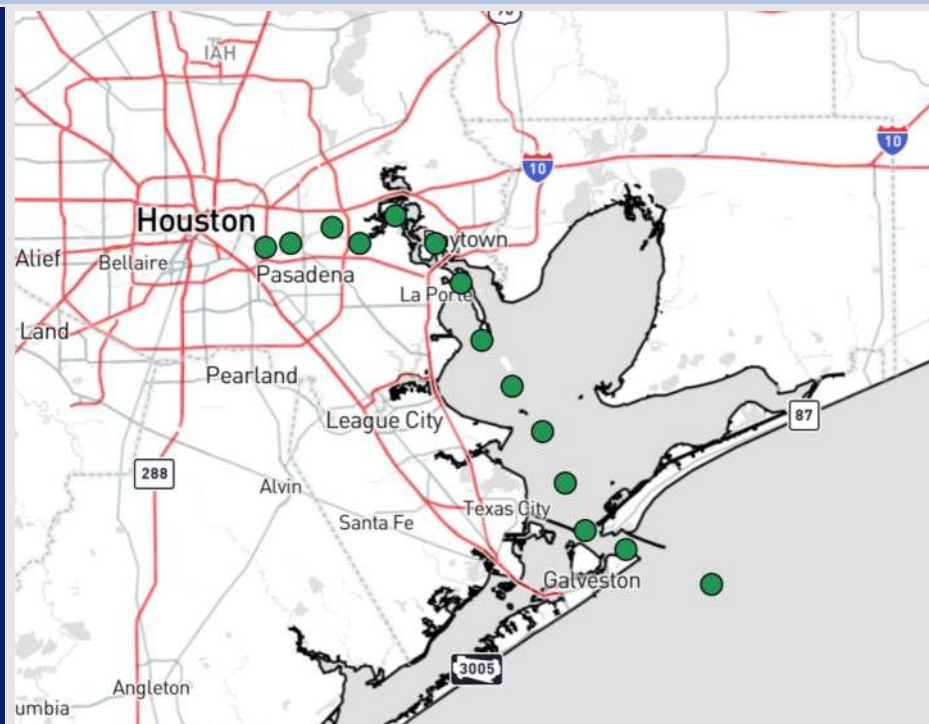
Updated: 10:45 PM CT

Sunday, March 23, 2025

Forecaster: Tyler Riggles

Weather Headlines

- **Watching for a low-end sea fog risk through the AM. See visibility slide for more details.**
- **Winds not expected to exceed 10 kts over the 72 hours.**
- **Isolated rain chances in play today through the AM today.**



Current Radar: 10:43 PM CT

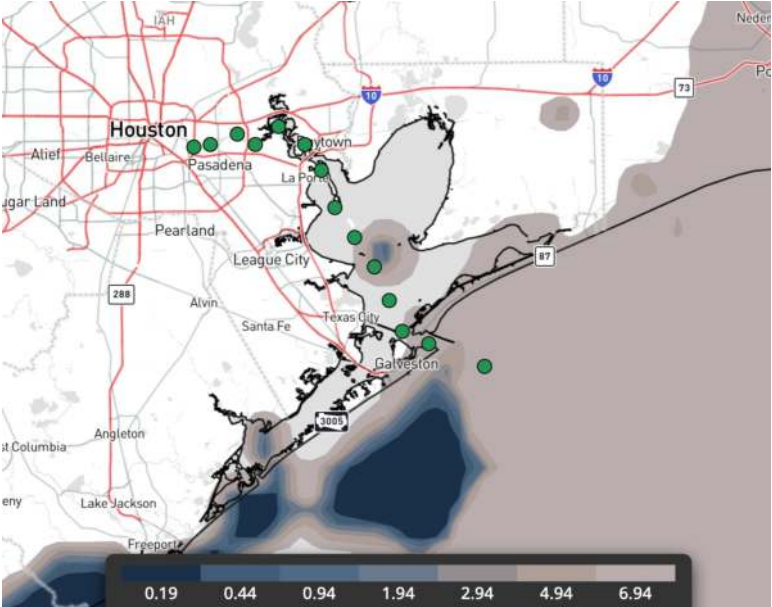
As always, please do not hesitate to reach out to us with any forecast questions at **(317)-560-8122**. Press 1 for forecast questions.

You can also access real-time forecast updates and 24/7 meteorological chat assistance on your [Clarity](#) app. Click [here](#) for login assistance.

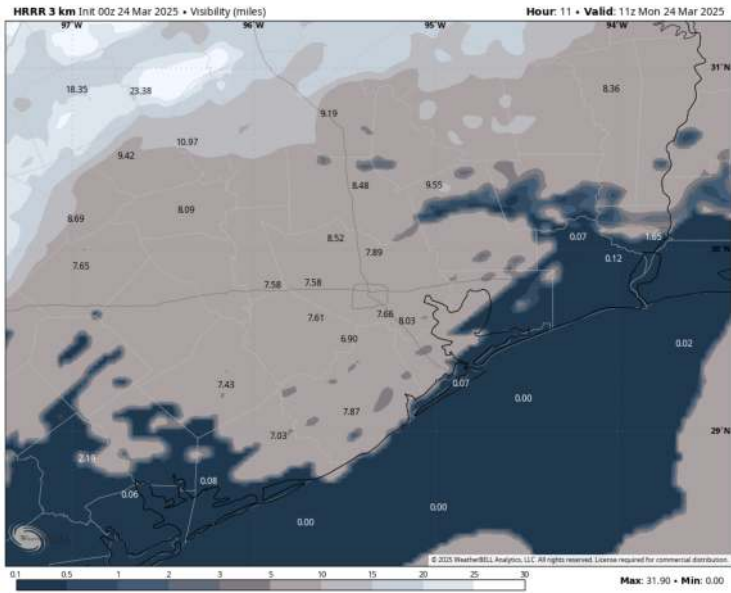


Houston Pilots Visibility Report

CURRENT VISIBILITY (10 PM CT)



5 AM CT MON VISIBILITY



Confidence



Ongoing mist/sea fog just to the South of the Bay is expected to continue impacting only the Boarding Station and 11/12 through 12 AM.

After 12 AM, sea fog risks are expected to encroach North into the bay but are not expected to reach N of 75/76. Sea fog risks will then be pushed out by an approaching front by 7 AM.

Visibilities of 1 – 2 miles will be possible at all times for affected Stations.

Confidence overall on this threat is low due to the possibility of the front moving in quicker, which may keep sea fog risks secluded to the Boarding Station and 11/12.

TIMEFRAME DISCUSSED

THREAT

CURRENT – 7 AM MON

Low-End

Houston Pilots Extended Range Visibility Report



Thursday 3/27/25

No fog concerns for Thursday.

Forecast Confidence



Saturday 3/29/25

No fog concerns for Saturday, however visibility can be reduced under heavy downpours

Forecast Confidence



Friday 3/28/25

No fog concerns for Friday, however visibility can be reduced under heavy downpours

Forecast Confidence



Chance for Fog

Thursday AM	Unlikely
Thursday PM	Unlikely
Friday AM	Unlikely
Friday PM	Unlikely
Saturday AM	Unlikely
Saturday PM	Unlikely

Houston Pilots Visibility Chart (miles)



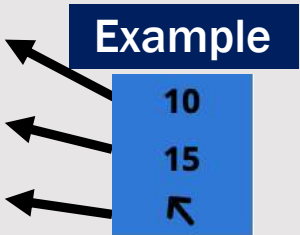
Visibility	Mon 12 am	Mon 1 am	Mon 2 am	Mon 3 am	Mon 4 am	Mon 5 am	Mon 6 am	Mon 7 am	Mon 8 am	Mon 9 am	Mon 10 am	Mon 11 am	Mon 12 pm	Mon 1 pm	Mon 2 pm	Mon 3 pm	Mon 4 pm	Mon 5 pm	Mon 6 pm	Mon 7 pm	Mon 8 pm	Mon 9 pm	Mon 10 pm	Mon 11 pm
Houston Pilots N - 610 Bridge	10	10	9	6.9	6.9	6.9	4.9	4.9	4.9	2.9	4.9	10	10	10	10	10	10	10	10	10	10	10	10	10
Houston Pilots M - Kinder 1	10	10	9	6.9	6.9	5.9	4.9	4.9	4.9	2.9	4.9	9	10	10	10	10	10	10	10	10	10	10	10	10
Houston Pilots L - Greens Bayou	10	10	7.9	6.9	5.9	5.9	4.9	4.9	4.9	2.9	4.9	7.9	10	10	10	10	10	10	10	10	10	10	10	10
Houston Pilots K - Shell Crude	10	10	7.9	6.9	5.9	5.9	4.9	4.9	4.9	2.9	4.9	7.9	10	10	10	10	10	10	10	10	10	10	10	10
Houston Pilots J - Lynchburg Ferries	10	10	7.9	6.9	5.9	5.9	4.9	4.9	4.9	2.9	4.9	7.9	10	10	10	10	10	10	10	10	10	10	10	10
Houston Pilots I - Exxon 3	9	7.9	6.9	6.9	5.9	5.9	4.9	4.9	4.9	2.9	4.9	6.9	10	10	10	10	10	10	10	10	10	10	10	10
Houston Pilots H - Morgans Point	9	4.9	4.9	6.9	5.9	5.9	2	4.9	4.9	2.9	4.9	6.9	10	10	10	10	10	10	10	10	10	10	10	10
Houston Pilots G - 75/76	4.9	4.9	3.9	4.9	3.9	2.5	2	3.9	3.9	0.3	1.1	4.9	4.9	10	10	10	10	10	10	10	10	10	0.2	0.2
Houston Pilots F - 63/64	4.9	4.9	3.9	4.9	3.9	3.9	2	1.1	3.9	0.3	1.1	4.9	4.9	2.9	5.9	7.9	10	10	9	7.9	7.9	6.9	0.2	0.2
Houston Pilots E - 51/52	4.9	3.9	3	4.9	1.6	0.8	2	0.8	1.6	0.3	1.1	4.9	4.9	2.9	5.9	6.9	6.9	7.9	6.9	6.9	6.9	6.9	0.2	0.2
Houston Pilots D - 37/38	3.9	3.9	0.5	3	1.6	0.8	2.5	0.8	1.6	0.3	1.1	6.9	4.9	3.9	5.9	6.9	10	7.9	6.9	6.9	6.9	6.9	0.2	0.2
Houston Pilots C - 25/26	3.9	2.5	0.5	3	3.9	2	2.5	0.8	2	0.5	1.1	6.9	9	10	10	10	10	10	10	10	10	10	0.2	0.2
Houston Pilots B - 11/12	0.7	0.5	0.5	0.5	3.9	2	2.5	0.8	1.6	0.3	1.1	6.9	3.9	3.9	4.9	6.9	6.9	6.9	6.9	6.9	6.9	6.9	0	0.2
Houston Pilots A - 1 & 2 Bravo	0.7	0.5	0.5	0.5	0.8	0.3	0.3	0.3	1.1	0.3	0.5	1.1	1.1	0.8	2	2.9	3.9	4.9	4.9	4.9	4.9	3.9	0	0

NOTE: This is automated data that may/may not agree with the official BAM thinking that's found on the daily slides or special visibility report slides. This data should be used as a guide only

Houston Pilots Wind Chart



Sustained wind 10 Knots
Gusts 15 Knots
Wind from the SE



Wind	Mon 12 am	Mon 1 am	Mon 2 am	Mon 3 am	Mon 4 am	Mon 5 am	Mon 6 am	Mon 7 am	Mon 8 am	Mon 9 am	Mon 10 am	Mon 11 am	Mon 12 pm	Mon 1 pm	Mon 2 pm	Mon 3 pm	Mon 4 pm	Mon 5 pm	Mon 6 pm	Mon 7 pm	Mon 8 pm	Mon 9 pm	Mon 10 pm	Mon 11 pm
Houston Pilots N - 610 Bridge	6 13 ↑	5 10 ↑	3 9 ↗	3 8 →	3 7 ↑	3 7 ↑	3 7 ↘	3 7 ↘	3 8 ↘	3 8 ↓	5 9 ↓	6 10 ↓	6 10 ↓	6 12 ↓	6 10 ↙	6 12 ↙	6 12 ↙	6 12 ↙	6 12 ↙	6 12 ↙	6 10 ↙	6 9 ↙	5 9 ↙	3 9 ↑
Houston Pilots M - Kinder 1	6 13 ↑	5 10 ↑	3 9 ↗	3 8 →	3 7 ↑	3 7 ↑	3 7 ↘	3 7 ↘	3 8 ↘	3 8 ↓	5 9 ↓	6 10 ↓	6 10 ↓	6 12 ↓	6 10 ↙	6 12 ↙	6 12 ↙	6 12 ↙	6 12 ↙	6 12 ↙	6 10 ↙	6 9 ↙	5 9 ↙	3 9 ↑
Houston Pilots L - Greens Bayou	6 12 ↑	5 9 ↑	3 9 ↗	3 8 →	3 7 ↑	3 7 ↑	3 7 ↘	3 7 ↘	3 8 ↘	3 8 ↓	5 9 ↓	5 10 ↓	6 10 ↓	6 12 ↓	6 10 ↙	6 12 ↙	6 12 ↙	6 12 ↙	6 12 ↙	6 12 ↙	6 10 ↙	6 9 ↙	5 9 ↙	3 8 ↑
Houston Pilots K - Shell Crude	6 12 ↑	5 9 ↑	3 8 ↗	3 8 →	3 7 ↑	3 7 ↑	3 7 ↘	3 7 ↘	3 8 ↘	3 8 ↓	5 9 ↓	5 9 ↓	6 10 ↓	6 12 ↓	6 10 ↙	6 12 ↙	6 12 ↙	6 12 ↙	6 12 ↙	6 12 ↙	6 10 ↙	6 9 ↙	5 9 ↙	3 8 ↑
Houston Pilots J - Lynchburg Ferries	6 12 ↑	5 9 ↑	3 8 ↗	3 7 ↗	3 7 ↑	3 7 ↑	3 6 ↘	3 7 ↘	3 7 ↘	3 8 ↓	3 8 ↓	5 9 ↓	6 10 ↓	6 12 ↓	6 10 ↙	6 12 ↙	6 10 ↙	6 12 ↙	6 12 ↙	6 12 ↙	6 10 ↙	5 9 ↙	5 8 ↙	3 8 ↑
Houston Pilots I - Exxon 3	8 12 ↑	6 10 ↑	6 9 ↗	5 8 ↗	5 7 ↗	5 7 ↑	5 7 ↘	5 7 ↘	5 8 ↘	6 9 ↓	6 9 ↓	6 9 ↓	6 10 ↓	6 12 ↓	6 12 ↙	7 13 ↙	7 13 ↙	8 13 ↙	8 13 ↙	8 13 ↙	8 13 ↙	7 10 ↙	6 9 ↙	6 9 ↑
Houston Pilots H - Morgans Point	8 12 ↑	6 9 ↑	6 9 ↗	5 8 ↗	5 7 ↗	5 7 ↑	3 7 ↘	5 7 ↘	5 8 ↘	5 8 ↓	6 9 ↓	6 9 ↓	6 10 ↓	6 12 ↓	6 12 ↙	7 13 ↙	7 13 ↙	8 13 ↙	8 14 ↙	8 13 ↙	8 13 ↙	7 10 ↙	6 9 ↙	6 9 ↑
Houston Pilots G - 75/76	8 13 ↑	7 10 ↑	6 9 ↗	6 9 ↗	6 7 ↗	6 7 ↑	5 7 →	5 7 ↘	6 8 ↘	6 9 ↓	6 9 ↓	6 10 ↓	6 10 ↓	7 12 ↙	7 13 ↙	7 13 ↙	8 14 ↙	8 14 ↙	8 14 ↙	8 14 ↙	9 13 ↙	8 12 ↙	7 10 ↙	6 9 ↑
Houston Pilots F - 63/64	8 13 ↑	7 10 ↑	6 9 ↗	6 9 ↗	6 8 ↗	6 7 ↑	5 7 ↑	6 8 ↘	6 8 ↘	6 9 ↓	6 9 ↓	6 10 ↓	6 10 ↓	6 12 ↙	7 12 ↙	7 13 ↙	8 13 ↙	8 14 ↙	8 14 ↙	8 14 ↙	8 13 ↙	8 12 ↙	7 10 ↙	6 9 ↑
Houston Pilots E - 51/52	8 13 ↑	7 10 ↑	6 9 ↗	6 9 ↗	6 8 ↗	6 7 ↑	5 7 ↑	5 7 ↘	6 8 ↘	6 9 ↓	6 9 ↓	6 9 ↓	6 10 ↓	7 12 ↙	7 12 ↙	7 13 ↙	8 14 ↙	8 14 ↙	8 14 ↙	8 13 ↙	8 12 ↙	8 10 ↙	7 10 ↙	6 9 ↑
Houston Pilots D - 37/38	8 13 ↑	7 10 ↑	6 9 ↗	6 9 ↗	6 8 ↗	6 8 ↑	5 7 ↑	5 7 ↘	6 8 ↘	6 8 ↓	6 8 ↓	6 9 ↓	7 10 ↓	7 12 ↙	7 12 ↙	7 13 ↙	8 13 ↙	8 14 ↙	8 13 ↙	8 13 ↙	8 12 ↙	7 10 ↙	6 9 ↙	6 9 ↑
Houston Pilots C - 25/26	8 13 ↑	7 10 ↑	6 9 ↗	6 9 ↗	6 8 ↗	6 8 ↑	5 7 ↑	5 7 ↘	5 7 ↘	6 8 ↓	6 8 ↓	6 9 ↓	6 10 ↓	7 12 ↙	7 12 ↙	7 13 ↙	8 13 ↙	8 13 ↙	8 13 ↙	8 12 ↙	8 12 ↙	7 9 ↙	6 9 ↙	6 9 ↑
Houston Pilots B - 11/12	8 13 ↑	7 10 ↑	6 9 ↗	6 9 ↗	6 8 ↗	6 8 ↑	5 7 ↑	5 7 ↘	5 7 ↘	5 8 ↓	5 8 ↓	6 9 ↓	6 9 ↓	7 12 ↙	7 10 ↙	7 12 ↙	7 12 ↙	8 12 ↙	7 12 ↙	7 12 ↙	7 12 ↙	6 9 ↙	6 9 ↙	6 9 ↑
Houston Pilots A - 1 & 2 Bravo	9 14 ↑	8 13 ↑	8 12 ↑	7 10 ↗	7 10 ↗	6 9 ↗	6 9 ↑	6 8 ↗	6 8 →	6 8 ↓	6 9 ↓	6 9 ↓	6 10 ↓	7 10 ↙	7 10 ↙	7 12 ↙	7 12 ↙	7 12 ↙	7 12 ↙	8 12 ↙	7 12 ↙	7 9 ↙	6 9 ↙	6 9 ↑

NOTE: This is automated data that may/may not agree with the official BAM thinking that's found on the daily slides.
This data should be used as a guide only.

Houston Pilots: MON. 3/24/2025

Forecast Discussion

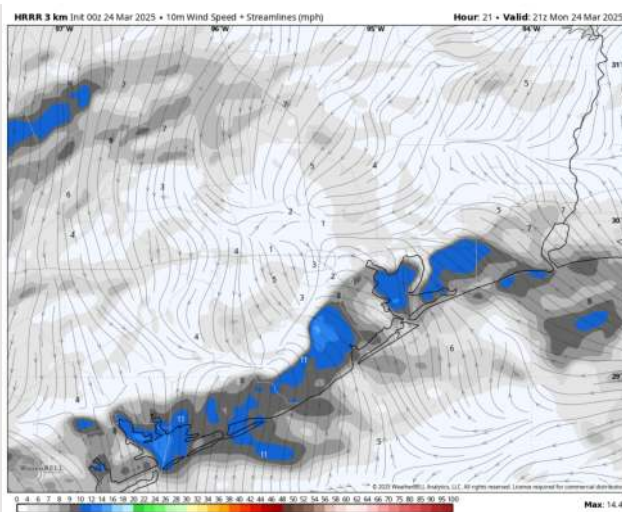
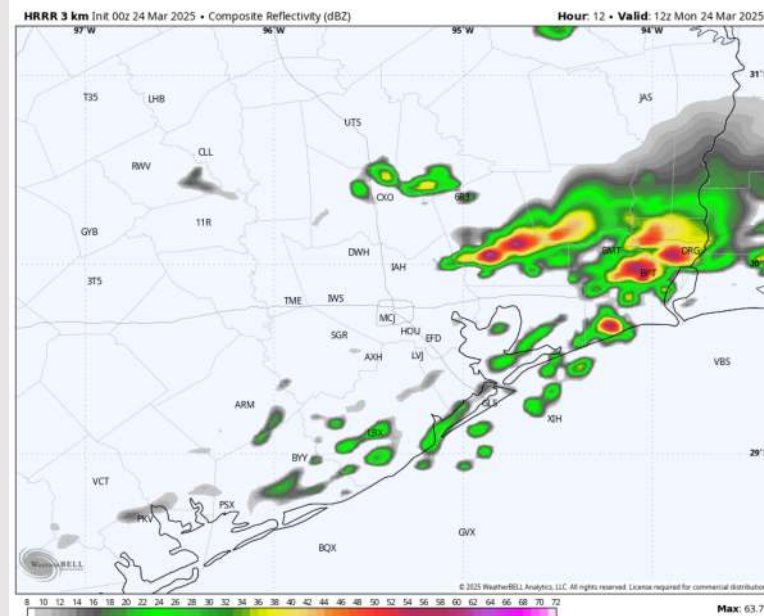
Precip: Isolated (20%) showers will be possible from 12AM to 12PM at all Stations.

Wind: Winds will be out of the SSW through 6 AM, becoming variable in direction through 4 PM before settling out of the SSE. **N of Morgan's Point:** Winds will be at 3 – 8 kts throughout the day. **S of Morgan's Point:** Winds will be at 3 – 8 kts through 4 PM, increasing to 5 - 10 kts through the rest of the day.

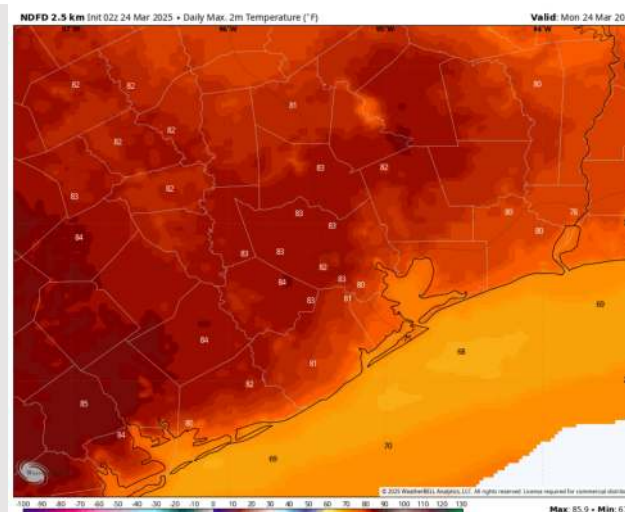
High Temps: **N of Morgan's Point:** Low 80s F. **S of Morgan's Point:** Mid 70s F.

Visibility: Watching for a low-end risk of sea-fog in the AM. See visibility slide for more details.

Precip Image: 7 AM CT



Wind Speed:
9 AM CT



High Temps
Today

Houston Pilots: TUE. 3/25/2025

Forecast Discussion

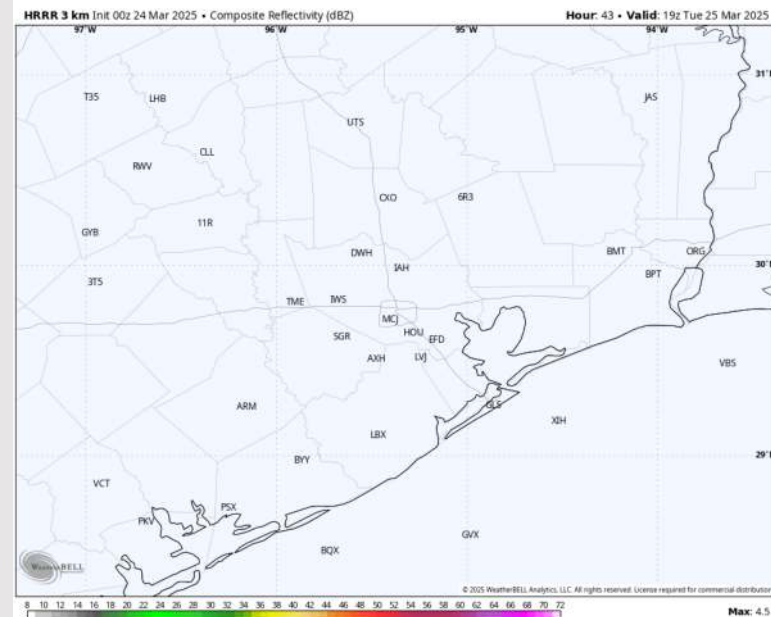
Precip: Favoring dry conditions for Tuesday.

Wind: Winds will be variable through 10 AM before settling out of the SSE for Tuesday. **N of Morgan's Point:** Winds will be at 2 – 7 kts throughout the day. **S of Morgan's Point:** Winds will be at 2 - 7 kts through 4 PM, increasing slightly to 4 – 9 kts after that time.

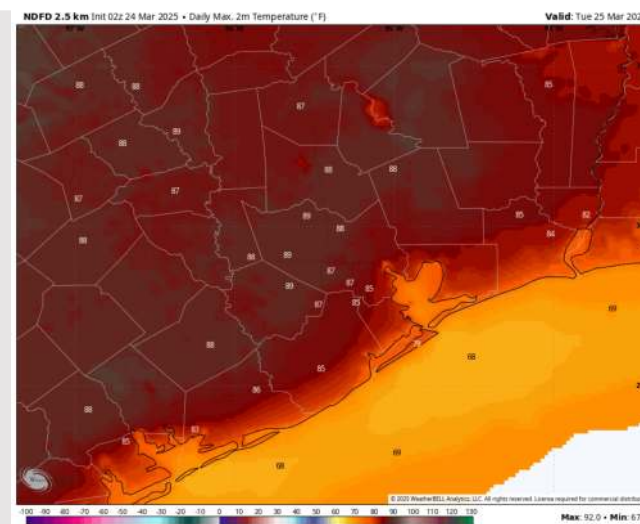
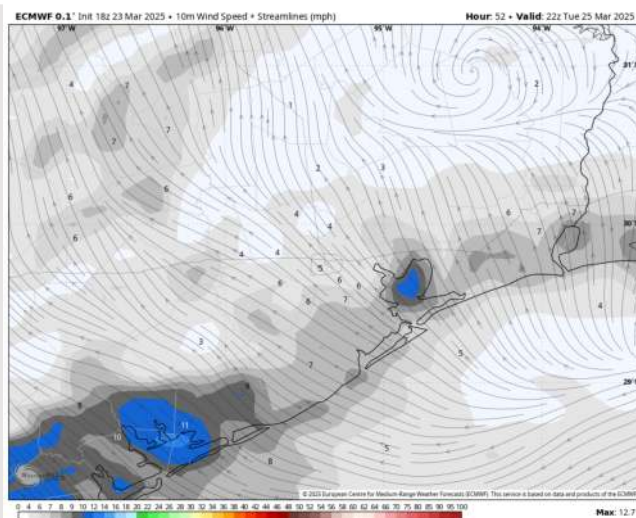
High Temps: **N of Morgan's Point:** Mid to high 80s F. **S of Morgan's Point:** Mid to High 70s F.

Visibility: Monitoring a low-end non-sea fog risk for Stations N of Morgan's Point TUE AM.

Precip Image: 2 PM CT



Wind Speed
5 PM CT



High Temps
Tuesday

Forecast Discussion

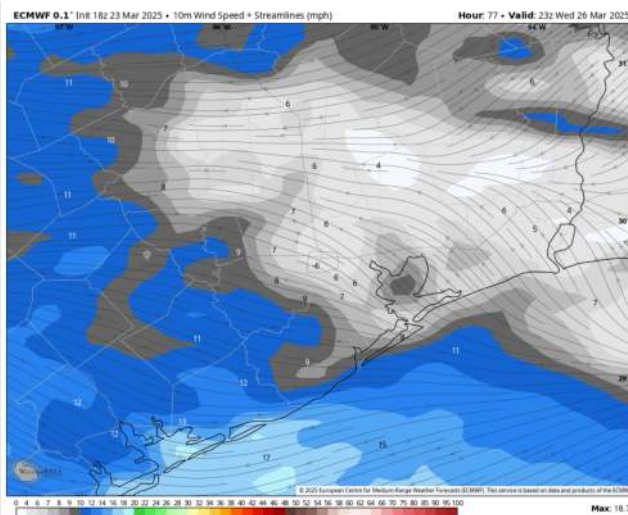
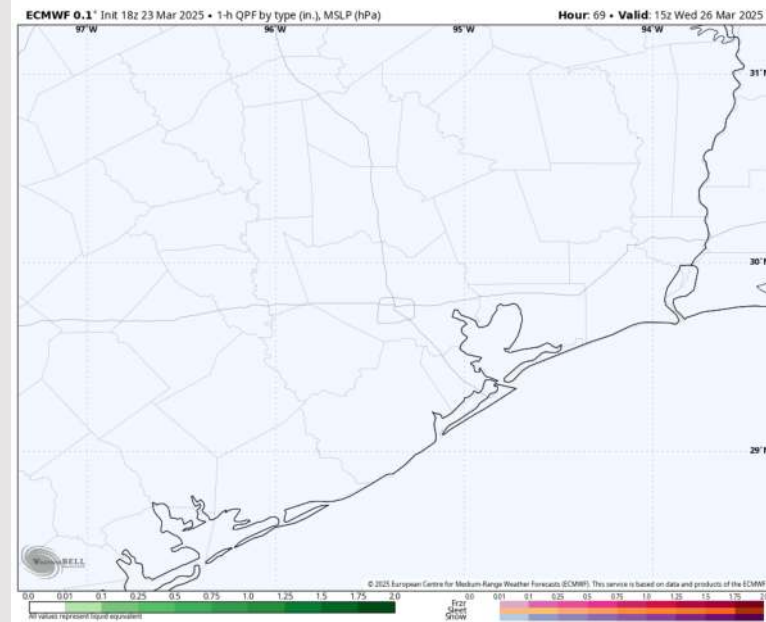
Precip: Dry conditions favored for Wednesday.

Wind: Winds will be out of the SSE through 5 AM, becoming variable through 5 PM before settling out of the SE again. **N of Morgan's Point:** Winds will be at 2 – 7 kts throughout the day. **S of Morgan's Point:** Winds will be at 4 – 9 kts throughout the day.

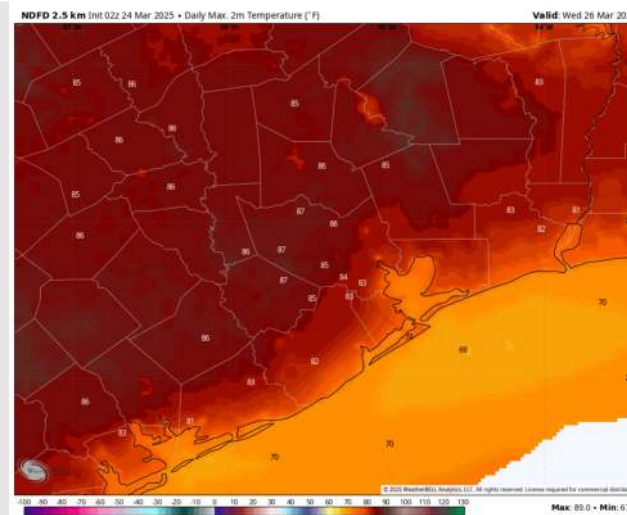
High Temps: **N of Morgan's Point:** Mid 80s F. **S of Morgan's Point:** Mid 70s F.

Visibility: Monitoring a low-end fog/mist risk for all Stations WED AM.

Precip Image: 10 AM CT



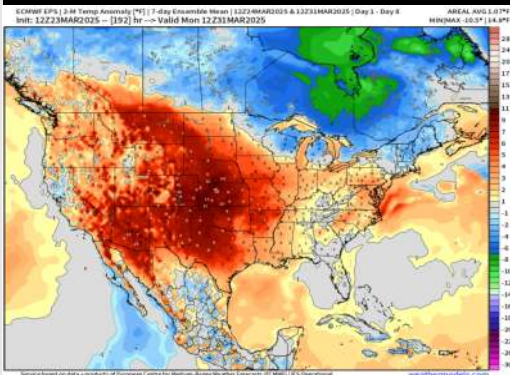
Wind Speed:
6 PM CT



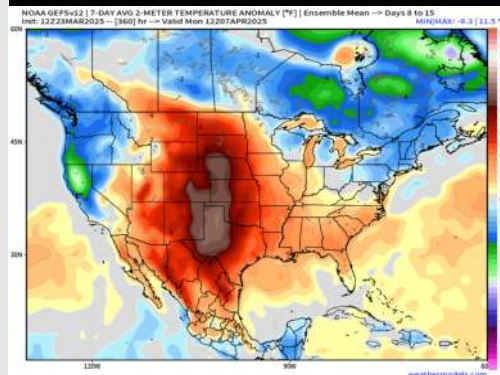
High Temps
Wednesday

Houston Pilots: 3/24/25

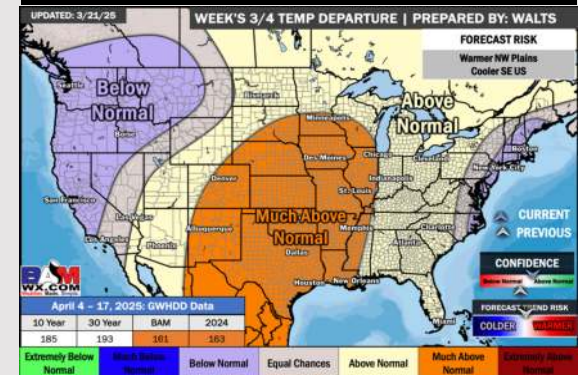
Next 7 Day Temperature Departure



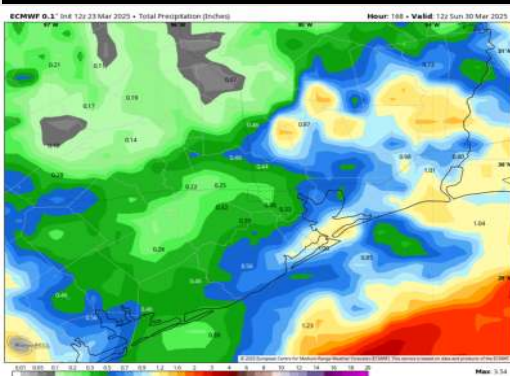
8-14 Day Temperature Departure



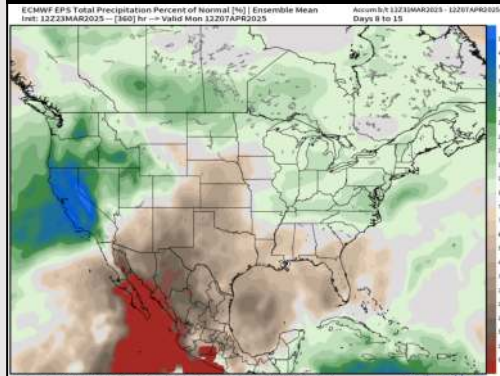
15-30 Day Temperature Departure



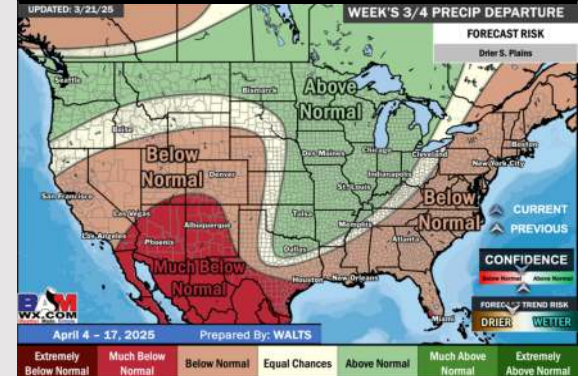
Next 7 Day Total Precipitation



8-14 Day % of Average Precip.



15-30 Day % of Average Precip.



- Temps are expected to be above normal for the next 7 days. Scattered rain chances favored throughout the week.
- Above normal temps and below normal rainfall are expected for week 2.
- Much above normal temperatures and below to much below normal precipitation chances are expected for the weeks ¾ timeframe.