

Houston Pilots Forecast Package



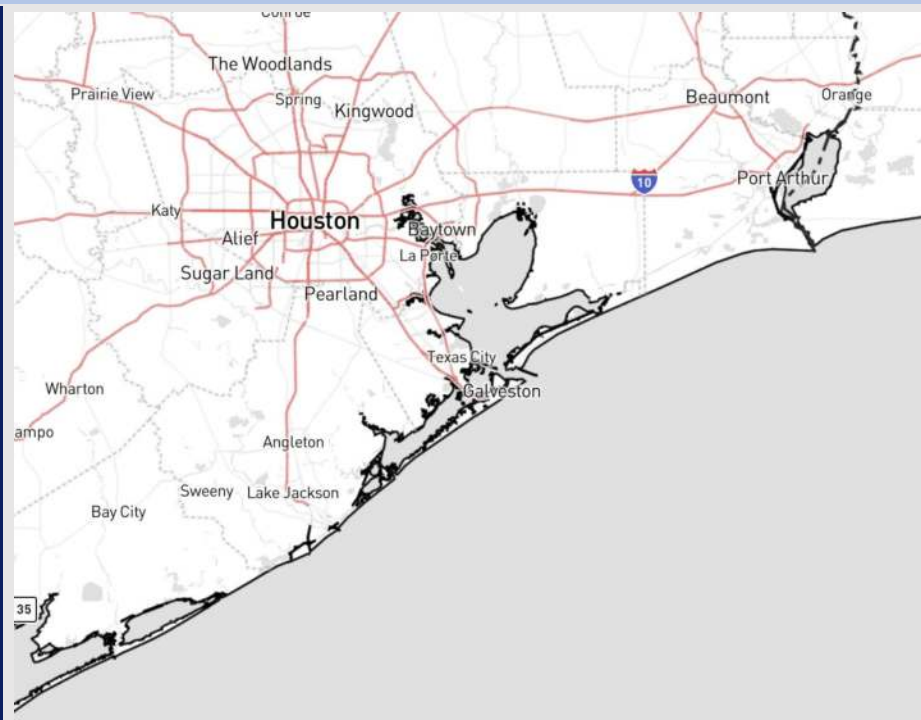
Updated: 2:00 PM CT

Friday, March 14, 2025

Forecaster: Alyssa Elliott

Weather Headlines

- Winds will gradually increase through the afternoon as another system approaches.
- A few chances of light rain will be in play today – SAT.
- **See visibility slide for latest on fog threat tonight and into SAT AM.**



Current Radar: 2:00 PM CT

As always, please do not hesitate to reach out to us with any forecast questions at **(317)-560-8122**. Press 1 for forecast questions.

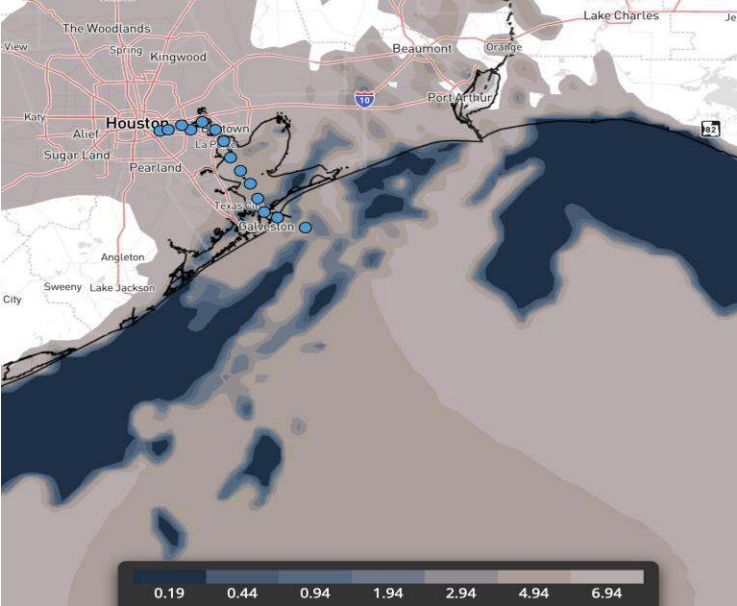
You can also access real-time forecast updates and 24/7 meteorological chat assistance on your [Clarity](#) app. Click [here](#) for login assistance.



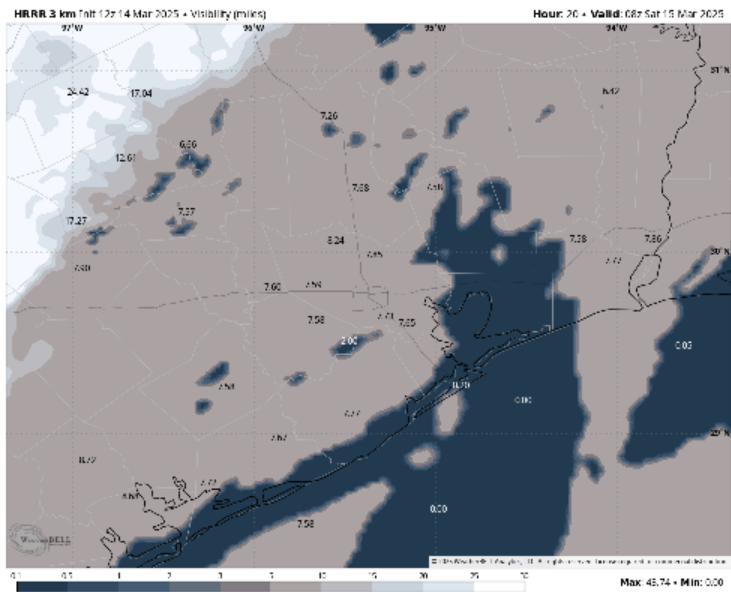
Houston Pilots Visibility Report



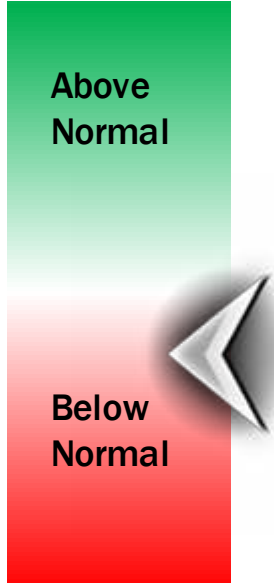
CURRENT as of 2 PM CT



3 AM CT SAT VISIBILITY



Confidence



TIMEFRAME DISCUSSED	THREAT
CURRENT – 7AM SAT	Medium

Patchy, dense fog continues to be present for Station 11/12 and the Boarding Station this afternoon reducing visibilities to 1 – 2 miles with occasional instances of visibility dropping to less than 1 mile.

By ~7 PM, we expect fog to become more widespread over Station 11/12 and the Boarding Station with patchy dense fog creeping into the Bay impacting all stations S of Morgan's Point reducing visibility to less than 1 mile. At this time, a low cloud deck may reduce visibility to 2 – 3 miles for stations N of Morgan's Point.

This set up is then favored to continue through the overnight. By ~6 – 7 AM Saturday, a front will begin to push through helping to clear out any fog still in the area, ending the risk.

Houston Pilots Extended Range Visibility Report



Monday 3/17/25

No fog concerns for Monday.

Forecast Confidence



Wednesday 3/19/25

No fog concerns for Wednesday.

Forecast Confidence



Tuesday 3/18/25

No fog concerns for Tuesday.

Forecast Confidence



Chance for Fog

Monday AM	Unlikely
Monday PM	Unlikely
Tuesday AM	Unlikely
Tuesday PM	Unlikely
Wednesday AM	Unlikely
Wednesday PM	Unlikely

Houston Pilots Visibility Chart (miles)



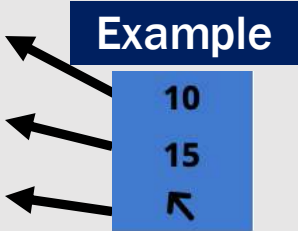
Visibility	Fri 3 pm	Fri 4 pm	Fri 5 pm	Fri 6 pm	Fri 7 pm	Fri 8 pm	Fri 9 pm	Fri 10 pm	Fri 11 pm	Sat 12 am	Sat 1 am	Sat 2 am	Sat 3 am	Sat 4 am	Sat 5 am	Sat 6 am	Sat 7 am	Sat 8 am	Sat 9 am	Sat 10 am	Sat 11 am	Sat 12 pm	Sat 1 pm	Sat 2 pm
Houston Pilots N - 610 Bridge	5.9	6.9	6.9	5.9	5.9	5.9	6.9	5.9	4.9	3.9	3.9	4.9	4.9	3.9	3.9	3.9	4.9	3.9	3.9	5.9	6.9	7.9	9	9
Houston Pilots M - Kinder 1	5.9	6.9	6.9	5.9	5.9	5.9	6.9	5.9	4.9	3.9	3.9	4.9	4.9	3.9	3.9	3.9	4.9	3.9	3.9	5.9	6.9	7.9	9	9
Houston Pilots L - Greens Bayou	5.9	6.9	6.9	6.9	6.9	5.9	6.9	5.9	5.9	3.9	3.9	3.9	4.9	3.9	3.9	3.9	3.9	3.9	3.9	5.9	6.9	7.9	9	10
Houston Pilots K - Shell Crude	5.9	6.9	6.9	5.9	5.9	5.9	6.9	5.9	4.9	3.9	3.9	3.9	3.9	3.9	3.9	3.9	3.9	3.9	3.9	5.9	6.9	7.9	9	9
Houston Pilots J - Lynchburg Ferries	5.9	6.9	6.9	6.9	6.9	5.9	6.9	5.9	4.9	3.9	3.9	3.9	3.9	3.9	3.9	3.9	3.9	3.9	3.9	5.9	6.9	7.9	9	10
Houston Pilots I - Exxon 3	4.9	5.9	6.9	5.9	5.9	5.9	5.9	5.9	3.9	3.9	3.9	3.9	2.9	2.9	3.9	3.9	2.9	2.9	2.9	5.9	6.9	6.9	9	9
Houston Pilots H - Morgans Point	4.9	5.9	5.9	5.9	5.9	5.9	5.9	3	3.9	3.9	3.9	3.9	2.9	2.9	2.5	2.5	2.9	2.9	2.9	3.9	5.9	6.9	9	9
Houston Pilots G - 75/76	4.9	3.9	1.6	5.9	5.9	5.9	4.9	0.7	2.5	2.9	3.9	2.5	1.6	2	2.5	2.5	2	2.5	2.5	2.9	5.9	6.9	9	10
Houston Pilots F - 63/64	4.9	3.9	1.6	5.9	5.9	5.9	4.9	0.7	2.5	2.9	2.9	2	1.6	2	2.5	2.5	2	2.5	2.5	2.9	5.9	6.9	9	10
Houston Pilots E - 51/52	4.9	3.9	2.5	4.9	4.9	3	0.7	0.7	0.5	2.5	2.9	0.8	0.3	2	2.5	2.5	2	2	2	2.9	4.9	6.9	9	10
Houston Pilots D - 37/38	3.9	3.9	2.5	2.5	2	3	0.7	0.7	0.5	2.5	2	0.5	0.3	0.8	0.8	0.8	0.8	0.8	0.8	1.1	2.9	4.9	6.9	10
Houston Pilots C - 25/26	3	3	0.5	1.1	2	2	0.7	0.7	0.5	2.5	2	0.5	0.3	0.8	0.8	0.8	0.5	0.8	0.8	1.1	2.9	4.9	6.9	10
Houston Pilots B - 11/12	0.7	1.1	0.5	1.1	2	0.5	0.7	0.7	0.5	1.1	0.5	0.5	0.5	1.1	0.8	0.8	0.8	0.8	0.8	1.1	2.9	4.9	6.9	10
Houston Pilots A - 1 & 2 Bravo	0.7	1.1	2	2.5	1.1	1.6	0.7	0.7	0.5	1.1	1.1	2	2.9	2.9	2.5	2.5	2	2	1.6	2	2.9	4.9	6.9	8

NOTE: This is automated data that may/may not agree with the official BAM thinking that's found on the daily slides or special visibility report slides. This data should be used as a guide only

Houston Pilots Wind Chart



Sustained wind 10 Knots
Gusts 15 Knots
Wind from the SE



Wind	Fri 3 pm	Fri 4 pm	Fri 5 pm	Fri 6 pm	Fri 7 pm	Fri 8 pm	Fri 9 pm	Fri 10 pm	Fri 11 pm	Sat 12 am	Sat 1 am	Sat 2 am	Sat 3 am	Sat 4 am	Sat 5 am	Sat 6 am	Sat 7 am	Sat 8 am	Sat 9 am	Sat 10 am	Sat 11 am	Sat 12 pm	Sat 1 pm	Sat 2 pm
Houston Pilots N - 610 Bridge	13	13	13	12	10	10	9	9	8	8	8	8	6	6	5	5	3	3	5	6	8	9	10	10
	26	25	24	23	22	20	20	18	17	17	16	15	13	13	10	9	9	8	10	13	15	17	20	22
	↗	↗	↗	↗	↗	↗	↗	↗	↗	↗	↗	↗	↗	↗	↗	↗	↗	↗	↗	↗	↗	↗	↗	
Houston Pilots M - Kinder 1	14	13	13	12	12	10	10	9	8	8	8	8	6	6	5	3	3	3	5	6	8	9	10	10
	26	25	24	23	22	21	20	18	17	17	16	15	13	13	10	9	9	8	10	13	15	17	20	21
	↗	↗	↗	↗	↗	↗	↗	↗	↗	↗	↗	↗	↗	↗	↗	↗	↗	↗	↗	↗	↗	↗	↗	
Houston Pilots L - Greens Bayou	13	13	13	13	12	10	10	9	8	8	8	8	6	6	5	3	3	3	5	6	8	9	10	10
	26	24	24	23	22	21	20	18	17	17	16	15	14	13	10	9	9	8	10	13	15	17	18	21
	↗	↗	↗	↗	↗	↗	↗	↗	↗	↗	↗	↗	↗	↗	↗	↗	↗	↗	↗	↗	↗	↗	↗	
Houston Pilots K - Shell Crude	13	13	13	13	12	10	10	9	8	8	8	8	7	6	5	3	3	3	5	6	7	8	10	10
	25	24	24	23	22	21	20	18	17	17	16	15	14	13	10	9	9	8	10	13	15	17	18	20
	↗	↗	↗	↗	↗	↗	↗	↗	↗	↗	↗	↗	↗	↗	↗	↗	↗	↗	↗	↗	↗	↗	↗	
Houston Pilots J - Lynchburg Ferries	13	13	13	13	12	10	10	9	8	8	8	8	6	6	5	3	3	3	5	6	7	8	10	10
	25	24	24	23	22	21	20	18	17	17	16	15	13	12	10	9	8	8	9	12	14	17	18	20
	↗	↗	↗	↗	↗	↗	↗	↗	↗	↗	↗	↗	↗	↗	↗	↗	↗	↗	↗	↗	↗	↗	↗	
Houston Pilots I - Exxon 3	15	15	15	15	15	14	13	13	12	12	12	10	10	8	7	6	6	6	6	8	8	10	10	12
	25	24	24	23	23	22	21	18	18	18	17	17	15	13	12	10	9	8	10	13	14	16	17	20
	↗	↗	↗	↗	↗	↗	↗	↗	↗	↗	↗	↗	↗	↗	↗	↗	↗	↗	↗	↗	↗	↗	↗	
Houston Pilots H - Morgans Point	15	15	15	15	15	14	13	13	12	12	12	10	9	8	7	6	6	5	6	7	8	9	10	10
	25	24	24	23	23	22	21	18	17	18	17	17	15	13	12	10	9	8	10	12	14	16	17	20
	↗	↗	↗	↗	↗	↗	↗	↗	↗	↗	↗	↗	↗	↗	↗	↗	↗	↗	↗	↗	↗	↗	↗	
Houston Pilots G - 75/76	15	15	15	16	16	15	15	14	13	13	13	13	12	9	8	7	6	6	7	8	9	10	10	12
	26	25	26	25	24	22	22	21	20	20	20	20	17	15	13	12	10	9	10	13	15	17	18	20
	↗	↗	↗	↗	↗	↗	↗	↗	↗	↗	↗	↗	↗	↗	↗	↗	↗	↗	↗	↗	↗	↗	↗	
Houston Pilots F - 63/64	16	16	16	16	16	15	15	14	13	13	13	14	12	10	8	8	6	6	7	8	9	10	10	12
	26	25	25	24	24	22	22	20	20	20	20	20	18	15	13	13	10	9	10	13	15	16	17	20
	↗	↗	↗	↗	↗	↗	↗	↗	↗	↗	↗	↗	↗	↗	↗	↗	↗	↗	↗	↗	↗	↗	↗	
Houston Pilots E - 51/52	15	15	15	15	15	15	15	14	13	13	14	14	13	10	9	8	6	6	7	8	9	10	10	10
	25	24	24	23	23	22	21	20	20	21	21	21	18	16	14	13	10	9	10	13	14	16	17	18
	↗	↗	↗	↗	↗	↗	↗	↗	↗	↗	↗	↗	↗	↗	↗	↗	↗	↗	↗	↗	↗	↗	↗	
Houston Pilots D - 37/38	15	15	15	15	15	15	14	13	13	13	14	14	13	10	9	8	6	6	6	8	9	10	10	10
	25	24	24	23	22	22	21	20	20	21	21	22	20	16	14	13	12	9	10	13	14	16	17	18
	↗	↗	↗	↗	↗	↗	↗	↗	↗	↗	↗	↗	↗	↗	↗	↗	↗	↗	↗	↗	↗	↗	↗	
Houston Pilots C - 25/26	15	15	15	15	14	14	14	13	13	13	14	15	13	10	9	8	7	6	7	8	9	10	10	10
	24	24	24	22	22	21	21	20	20	21	22	22	20	17	15	13	12	9	10	13	14	16	17	18
	↗	↗	↗	↗	↗	↗	↗	↗	↗	↗	↗	↗	↗	↗	↗	↗	↗	↗	↗	↗	↗	↗	↗	
Houston Pilots B - 11/12	15	15	14	14	13	13	13	13	13	13	13	14	13	10	9	8	6	6	6	7	8	9	10	10
	23	23	22	22	21	20	20	18	18	21	22	22	21	17	15	13	12	9	10	13	14	15	16	17
	↗	↗	↗	↗	↗	↗	↗	↗	↗	↗	↗	↗	↗	↗	↗	↗	↗	↗	↗	↗	↗	↗	↗	
Houston Pilots A - 1 & 2 Bravo	15	15	15	15	14	14	14	14	14	15	15	16	15	13	10	9	8	7	8	8	10	10	10	10
	23	24	23	22	22	21	22	21	21	22	23	24	22	21	17	15	13	12	13	14	15	16	17	17
	↗	↗	↗	↗	↗	↗	↗	↗	↗	↗	↗	↗	↗	↗	↗	↗	↗	↗	↗	↗	↗	↗	↗	

NOTE: This is automated data that may/may not agree with the official BAM thinking that's found on the daily slides.
This data should be used as a guide only.

Houston Pilots: FRI. 3/14/2025

Forecast Discussion

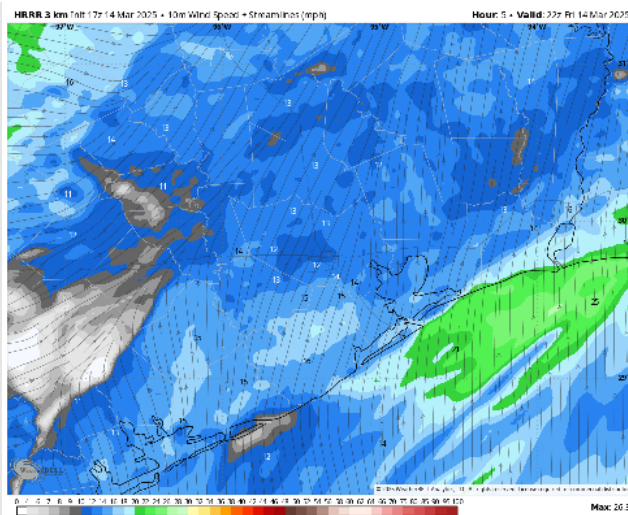
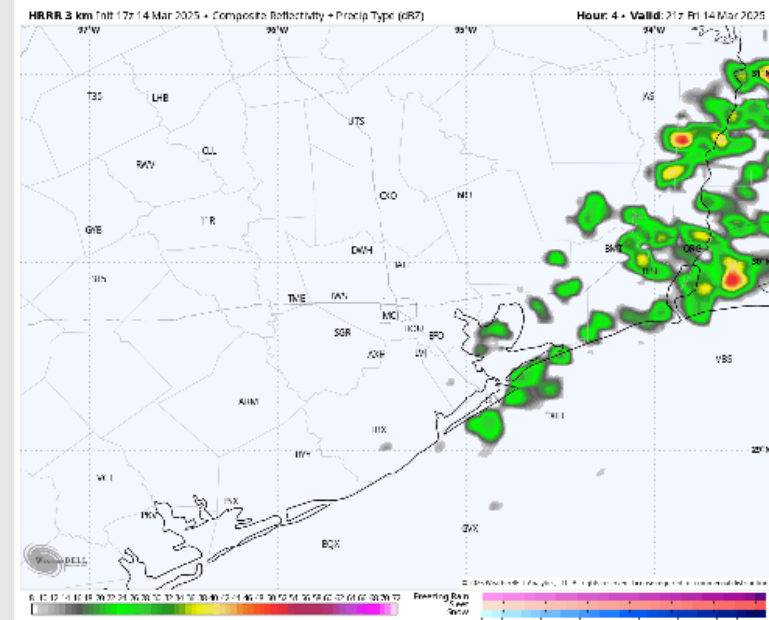
Precip: Favoring dry conditions through most of the afternoon, although an isolated pop-up shower (10%) cannot be ruled out through 4PM.

Wind: Winds will be out of the S for the rest of the PM. **N of Morgan's Point:** Winds at 8 – 13 kts throughout the PM. **S of Morgan's Point:** Winds will be at 15 – 20 kts throughout the PM. **Wind gusts of 30 kts will be possible for all stations S of Morgan's Point through the PM.**

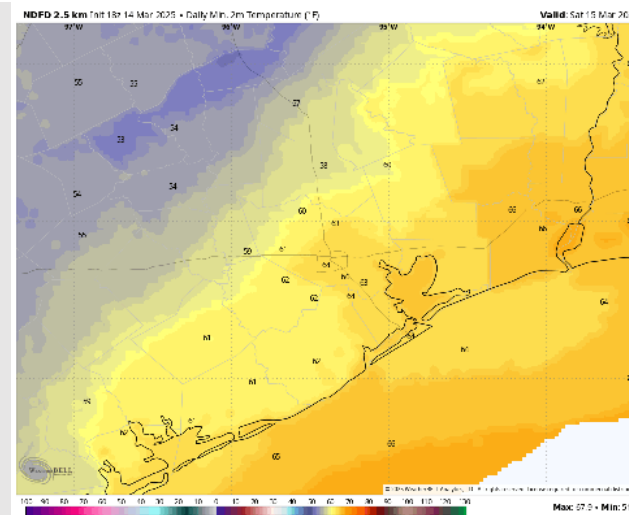
Low Temps: **N of Morgan's Point:** Lower 60s F. **S of Morgan's Point:** Mid 60s F.

Visibility: Monitoring the risk for continued sea fog FRI PM. See latest visibility slide for more information.

Precip Image: 4 PM CT



Wind Speed:
5 PM CT



Low Temps
SAT AM

Houston Pilots: SAT. 3/15/2025

Forecast Discussion

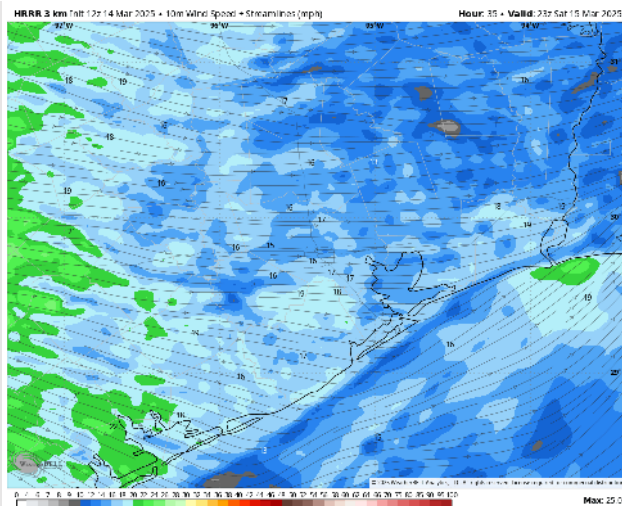
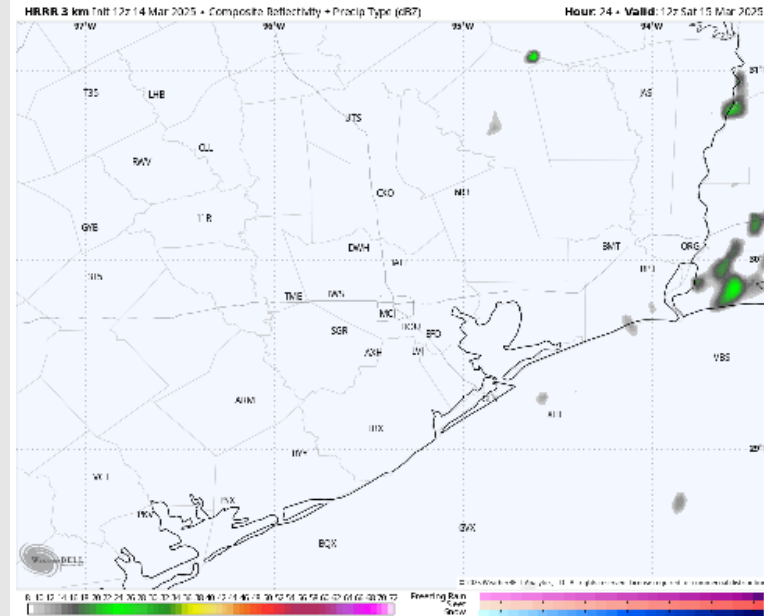
Precip: Favoring light drizzle / rain chances from 5AM – 8AM as the front passes through on Saturday (20%).

Wind: Winds will quickly veer from out of the S to out of the W by 9AM and remain there for the rest of Saturday. **N of Morgan's Point:** Winds will be at 3 – 6 kts through 3PM before increasing to 8 – 13kts. **S of Morgan's Point:** Winds will be at 4 – 9 kts through 3PM before increasing to 10 – 15 kts. **Gusts up to 20 kts may be possible for all Stations as the front comes through between 7AM – 11AM. Gusts up to 20kts are then expected to pick back up from 3PM to 9PM for all Stations.**

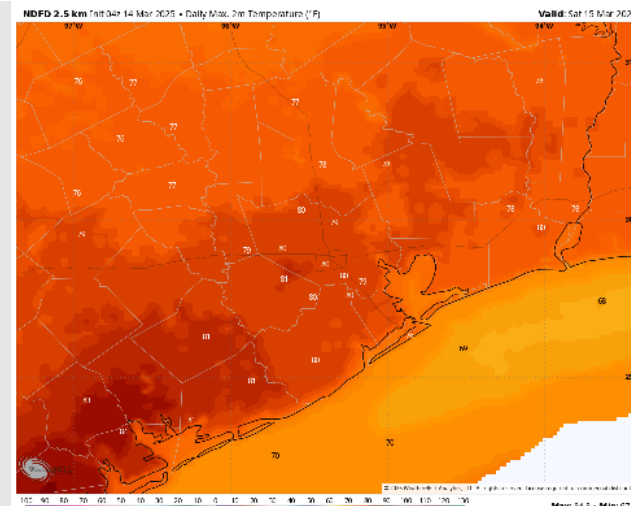
High Temps: **N of Morgan's Point:** Upper 70s F. **S of Morgan's Point:** Low 70s F.

Visibility: Watching for a low-end sea fog risk for all stations prior to frontal passage on early Saturday AM. See visibility slide for preliminary thoughts.

Precip Image: 7 AM CT



Wind Speed:
6 PM CT



High Temps
Saturday

Houston Pilots: SUN. 3/16/2025

Forecast Discussion

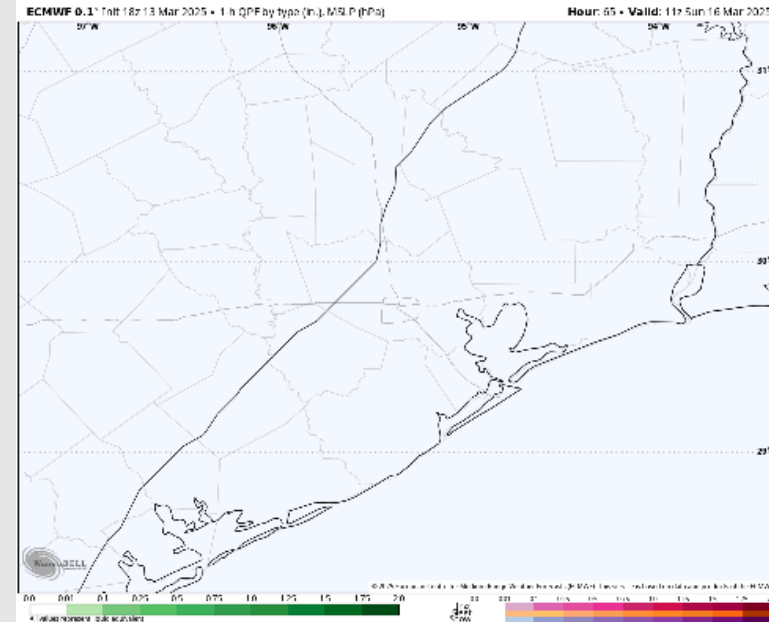
Precip: Favoring dry conditions for Sunday.

Wind: Winds will start out of the W/WNW through 4AM before becoming out of the NW/N by 7AM, remaining there for the rest of Sunday. **N of Morgan's Point:** Winds will be at 3 – 8 kts for all of Sunday. **S of Morgan's Point:** Winds will be at 8 – 12 kts throughout the entire day.

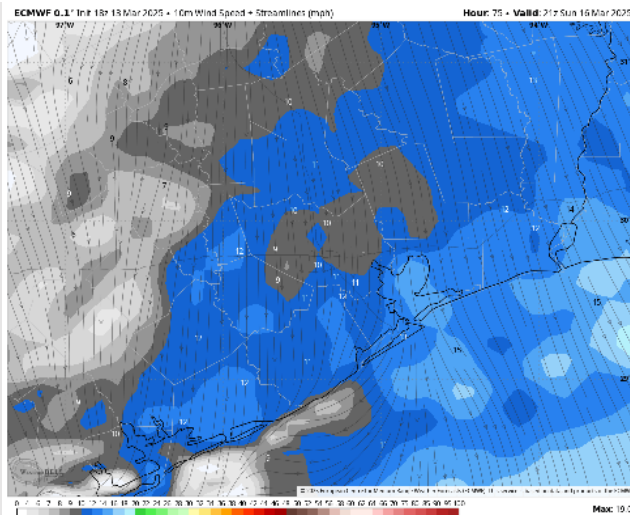
High Temps: **N of Morgan's Point:** Mid 70s F. **S of Morgan's Point:** Mid 60s F.

Visibility: No sea fog concerns favored at this time.

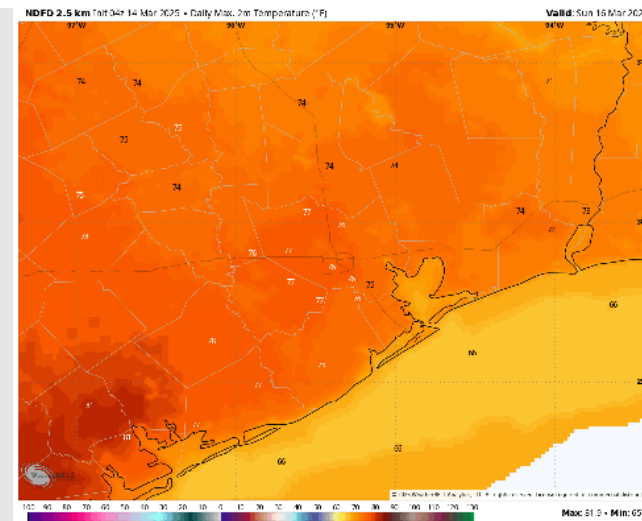
Precip Image: 6 AM CT



Wind Speed
4 PM CT

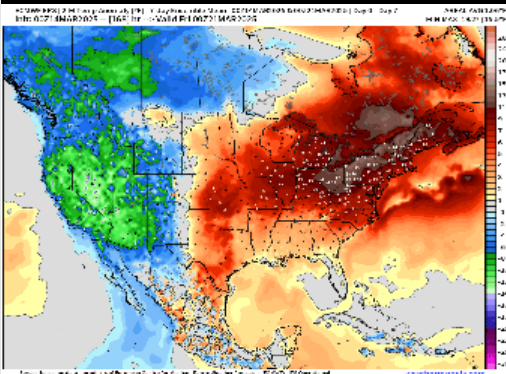


High Temps
Sunday

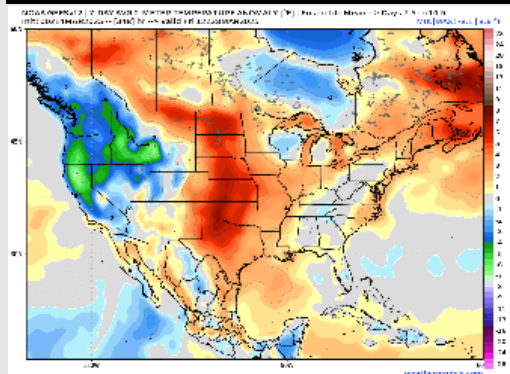


Houston Pilots: 3/14/25

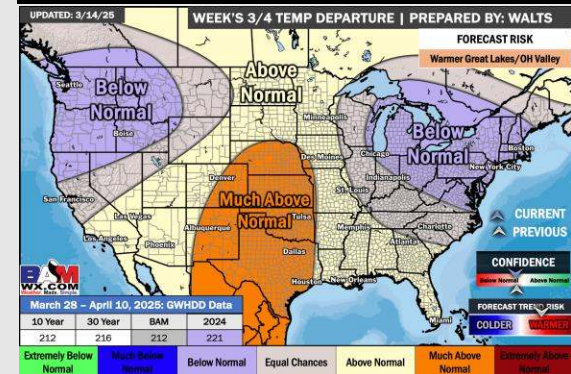
Next 7 Day Temperature Departure



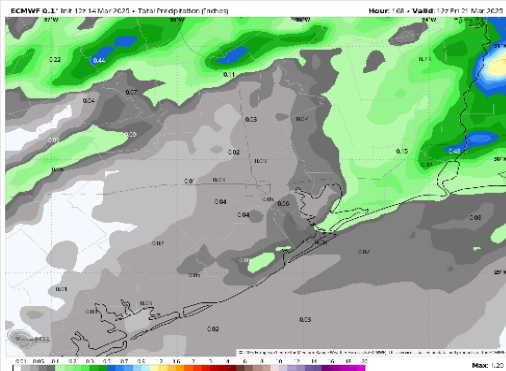
8-14 Day Temperature Departure



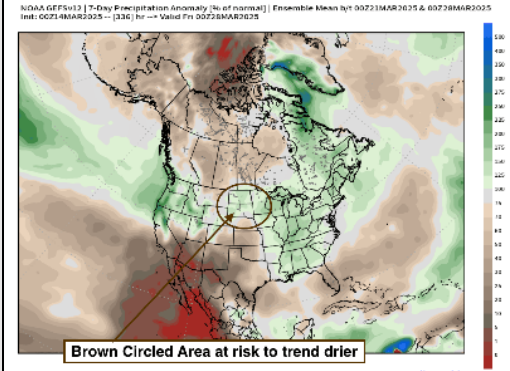
15-30 Day Temperature Departure



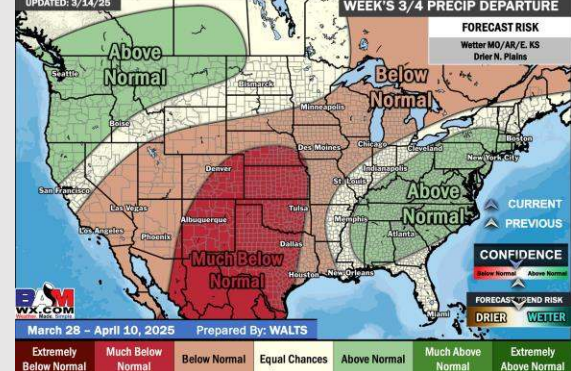
Next 7 Day Total Precipitation



8-14 Day % of Average Precip.



15-30 Day % of Average Precip.



- Temps are expected to be above normal for the next 7 days. Scattered rain chances arrive by the weekend.
- Above normal temps and near normal rainfall are expected for week 2.
- Much above normal temperatures and below normal precipitation chances are expected for the weeks $\frac{3}{4}$ timeframe.