

Houston Pilots Forecast Package



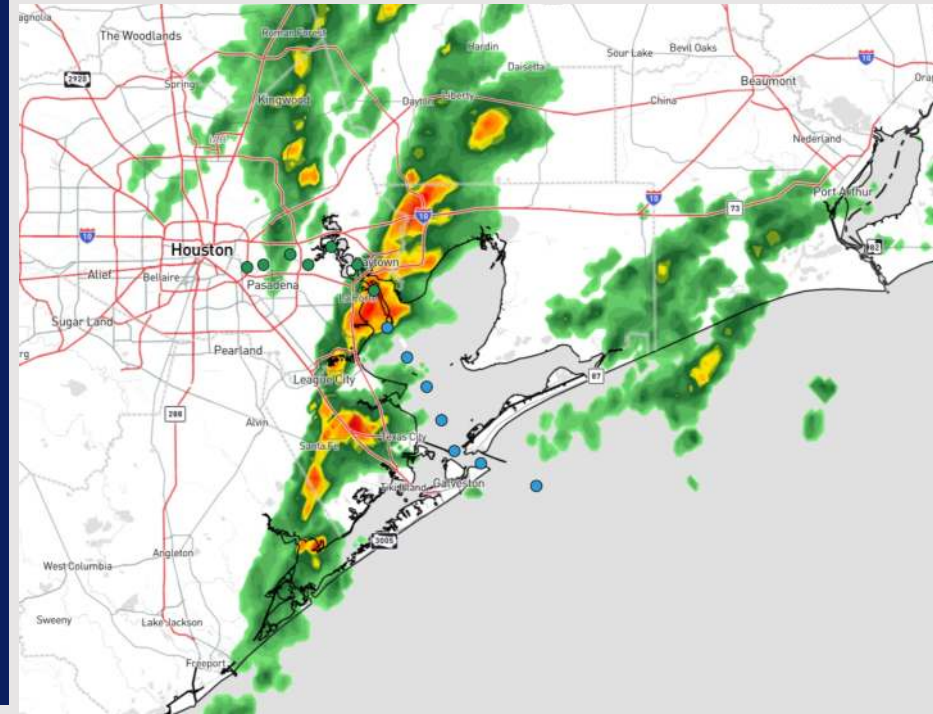
Updated: 11:45 PM CT

Saturday, March 8, 2025

Forecaster: John Kemper

Weather Headlines

- Wind gusts of 30-35kts will be possible as the front pushes through / line of downpours pushes east.
- Patchy dense fog will continue to quickly exit out of stations 11/12 and the Boarding Station.
- Dry conditions and calmer winds are favored for Monday and Tuesday.



Current Radar: 11:40 PM CT

As always, please do not hesitate to reach out to us with any forecast questions at **(317)-560-8122**. Press **1** for forecast questions.

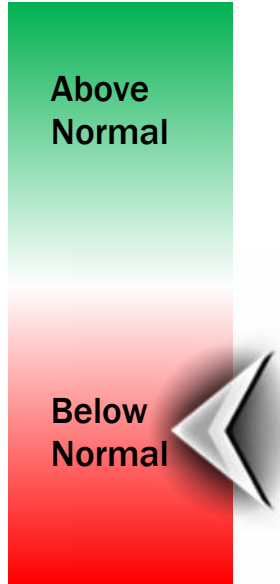
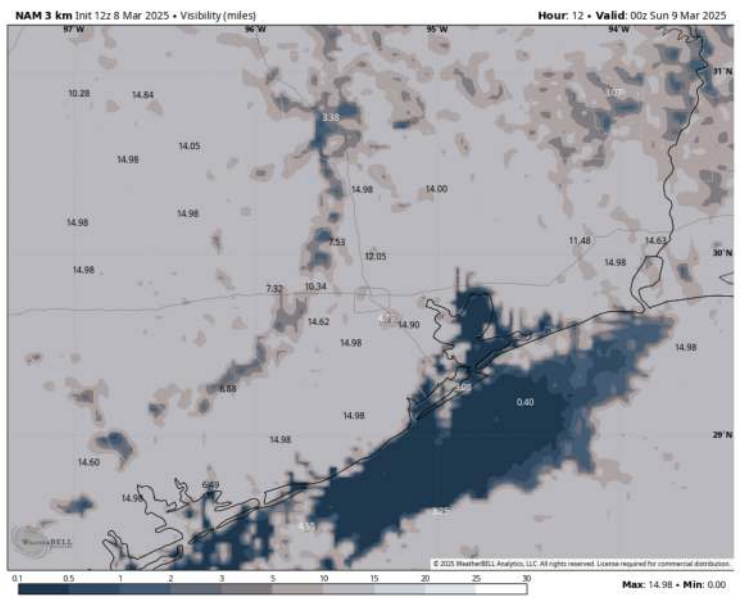
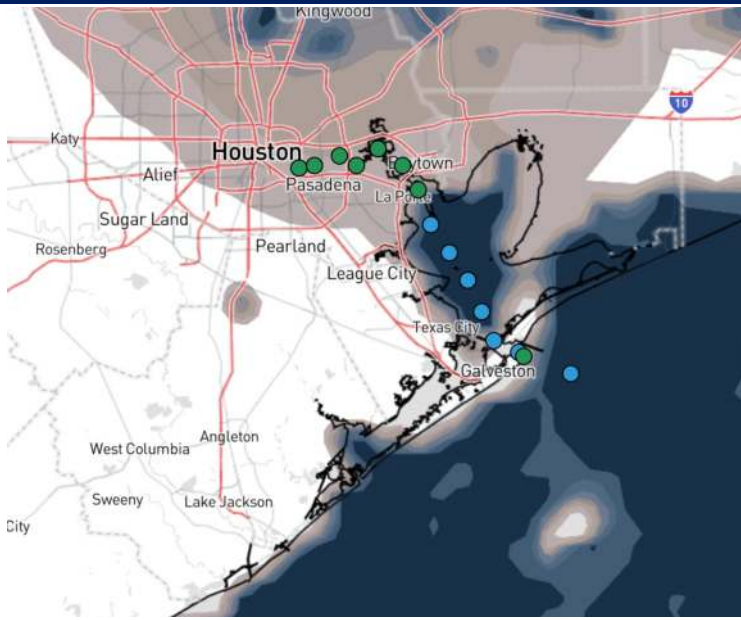
You can also access real-time forecast updates and 24/7 meteorological chat assistance on your [Clarity](#) app. Click [here](#) for login assistance.



Houston Pilots Visibility Report



CURRENT (1:00 PM SAT) 6 PM CST SAT VISIBILITY Confidence



TIMEFRAME DISCUSSED	THREAT
CURRENT - 12 AM SUN	Medium

Stations N. of Morgan's Point: Not anticipating any fog through the rest of the day.

Stations S. of Morgan's Point: Wind gusts will begin to pick up a touch near Morgan's Point which will allow for fog to continue become patchier with visibility improved to 2 miles or less. That said, we don't anticipate this fog S of Morgan's Point to clear until 12 AM SUN.

Main take-away: Currently, we anticipate fog to be present for stations S of Morgan's Point throughout the rest of the day with this risk clearing once the front pushes through and winds pick up out of the NW. Confidence on exact coverage S of Morgan's Point and fog density is below normal.

Houston Pilots Extended Range Visibility Report



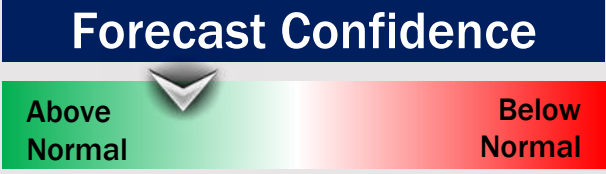
Wednesday 3/12/25

Watching for a low-end risk for patchy, non sea fog for stations N of Morgan's Point.



Thursday 3/13/25

No fog concerns for Thursday.



Friday 3/14/25

No fog concerns for Friday.



Chance for Fog

Wednesday AM	Low-End
Wednesday PM	Unlikely
Thursday AM	Unlikely
Thursday PM	Unlikely
Friday AM	Unlikely
Friday PM	Unlikely

Houston Pilots Visibility Chart (miles)



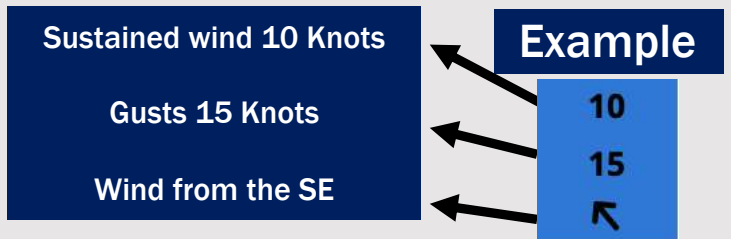
Forecast Confidence



Visibility	Sun 1 am	Sun 3 am	Sun 4 am	Sun 5 am	Sun 6 am	Sun 7 am	Sun 8 am	Sun 9 am	Sun 10 am	Sun 11 am	Sun 12 pm	Sun 1 pm	Sun 2 pm	Sun 3 pm	Sun 4 pm	Sun 5 pm	Sun 6 pm	Sun 7 pm	Sun 8 pm	Sun 9 pm	Sun 10 pm	Sun 11 pm	Mon 12 am	Mon 1 am
Houston Pilots N - 610 Bridge	6.9	6.9	6.9	8	9	10	10	10	10	10	10	10	10	10	10	10	10	10	10	10	10	10	10	10
Houston Pilots M - Kinder 1	6.9	6.9	6.9	6.9	7.9	10	10	10	10	10	10	10	10	10	10	10	10	10	10	10	10	10	10	10
Houston Pilots L - Greens Bayou	5.9	5.9	5.9	6.9	6.9	8	9	8	9	10	10	10	10	10	10	10	10	10	10	10	10	10	10	10
Houston Pilots K - Shell Crude	5.9	5.9	5.9	5.9	6.9	6.9	8	6.9	8	10	10	10	10	10	10	10	10	10	10	10	10	10	10	10
Houston Pilots J - Lynchburg Ferries	5.9	5.9	5.9	6.9	6.9	6.9	8	8	9	10	10	10	10	10	10	10	10	10	10	10	10	10	10	10
Houston Pilots I - Exxon 3	4.9	5.9	5.9	5.9	6.9	6.9	6.9	6.9	8	10	10	10	10	10	10	10	10	10	10	10	10	10	10	10
Houston Pilots H - Morgans Point	4.9	4.9	4.9	5.9	5.9	6.9	6.9	6.9	8	8	10	10	10	7.9	10	10	10	10	10	10	10	10	10	10
Houston Pilots G - 75/76	2.9	2.9	2.9	2.9	3.9	3.9	4.9	5.9	6.9	10	10	10	10	10	10	10	10	10	10	10	10	10	10	10
Houston Pilots F - 63/64	2.5	2.5	2	1.1	2.9	3.9	4.9	5.9	6.9	10	10	10	10	10	10	10	10	10	10	10	10	10	10	10
Houston Pilots E - 51/52	0.2	0.8	0.3	0.7	0.8	2	3.9	4.9	6.9	10	10	10	10	10	10	10	10	10	10	10	10	10	10	10
Houston Pilots D - 37/38	0.2	0.3	0.3	0.2	0.5	1.1	2.5	3.9	6.9	10	10	10	10	10	10	10	10	10	10	10	10	10	10	10
Houston Pilots C - 25/26	0.2	0.3	0.3	0.2	0.5	0.7	1.6	2.9	5.9	10	10	10	10	10	10	10	10	10	10	10	10	10	10	10
Houston Pilots B - 11/12	0.2	0.3	0.3	0.2	0.5	0.7	1.1	2.5	4.9	10	10	10	10	10	10	10	10	10	10	10	10	10	10	10
Houston Pilots A - 1 & 2 Bravo	0.2	0.3	0.3	0.5	0.5	0.7	1.1	2.5	3.9	9	10	10	10	10	10	10	10	10	9	10	10	10	10	10

NOTE: This is automated data that may/may not agree with the official BAM thinking that's found on the daily slides or special visibility report slides. This data should be used as a guide only

Houston Pilots Wind Chart



Wind	Sun 1 am	Sun 3 am	Sun 4 am	Sun 5 am	Sun 6 am	Sun 7 am	Sun 8 am	Sun 9 am	Sun 10 am	Sun 11 am	Sun 12 pm	Sun 1 pm	Sun 2 pm	Sun 3 pm	Sun 4 pm	Sun 5 pm	Sun 6 pm	Sun 7 pm	Sun 8 pm	Sun 9 pm	Sun 10 pm	Sun 11 pm	Mon 12 am	Mon 1 am
Houston Pilots N - 610 Bridge	14 26 ↓	14 26 ↓	14 26 ↓	13 25 ↓	13 24 ↓	13 23 ↓	12 22 ↓	13 23 ↓	13 24 ↓	13 25 ↓	14 25 ↓	14 25 ↓	13 25 ↓	14 26 ↓	14 28 ↓	14 28 ↓	15 29 ↓	15 28 ↓	14 26 ↓	13 24 ↓	12 22 ↓	10 20 ↓	9 18 ↓	8 17 ↓
Houston Pilots M - Kinder 1	14 26 ↓	14 26 ↓	14 26 ↓	13 25 ↓	13 24 ↓	13 23 ↓	12 22 ↓	13 23 ↓	13 24 ↓	13 25 ↓	14 25 ↓	14 25 ↓	13 25 ↓	14 26 ↓	14 26 ↓	15 26 ↓	15 29 ↓	15 28 ↓	13 26 ↓	13 24 ↓	12 22 ↓	10 20 ↓	10 18 ↓	8 17 ↓
Houston Pilots L - Greens Bayou	13 26 ↓	13 26 ↓	13 25 ↓	13 25 ↓	13 24 ↓	12 22 ↓	10 21 ↓	12 22 ↓	13 24 ↓	13 24 ↓	13 24 ↓	14 24 ↓	13 24 ↓	13 25 ↓	14 25 ↓	14 26 ↓	15 28 ↓	14 26 ↓	13 25 ↓	13 24 ↓	12 22 ↓	10 20 ↓	9 18 ↓	8 17 ↓
Houston Pilots K - Shell Crude	13 26 ↓	13 26 ↓	13 25 ↓	13 25 ↓	13 24 ↓	12 22 ↓	10 21 ↓	12 22 ↓	13 24 ↓	13 24 ↓	14 25 ↓	14 24 ↓	13 24 ↓	13 25 ↓	14 25 ↓	14 25 ↓	14 28 ↓	14 26 ↓	13 25 ↓	13 24 ↓	12 22 ↓	10 20 ↓	9 18 ↓	8 17 ↓
Houston Pilots J - Lynchburg Ferries	13 25 ↓	13 25 ↓	13 24 ↓	13 24 ↓	12 23 ↓	10 22 ↓	10 21 ↓	12 22 ↓	13 23 ↓	13 24 ↓	14 24 ↓	13 24 ↓	13 24 ↓	13 25 ↓	14 25 ↓	14 25 ↓	15 28 ↓	14 26 ↓	13 25 ↓	13 24 ↓	12 22 ↓	10 20 ↓	9 18 ↓	8 17 ↓
Houston Pilots I - Exxon 3	17 25 ↓	17 25 ↓	17 25 ↓	17 24 ↓	16 23 ↓	15 22 ↓	15 21 ↓	15 22 ↓	15 23 ↓	15 23 ↓	15 24 ↓	15 24 ↓	15 23 ↓	15 24 ↓	15 24 ↓	15 25 ↓	16 26 ↓	17 26 ↓	17 25 ↓	16 24 ↓	15 22 ↓	15 21 ↓	13 20 ↓	13 17 ↓
Houston Pilots H - Morgans Point	17 25 ↓	17 25 ↓	17 24 ↓	16 24 ↓	16 23 ↓	15 22 ↓	14 21 ↓	15 22 ↓	15 22 ↓	15 23 ↓	15 23 ↓	15 24 ↓	15 23 ↓	15 24 ↓	15 24 ↓	15 25 ↓	16 26 ↓	16 25 ↓	16 25 ↓	16 24 ↓	15 22 ↓	14 21 ↓	13 20 ↓	13 17 ↓
Houston Pilots G - 75/76	20 26 ↓	20 26 ↓	20 26 ↓	20 26 ↓	18 26 ↓	17 24 ↓	16 23 ↓	17 24 ↓	17 25 ↓	17 25 ↓	17 25 ↓	17 25 ↓	16 25 ↓	16 26 ↓	16 26 ↓	17 26 ↓	17 28 ↓	17 28 ↓	18 28 ↓	20 26 ↓	18 24 ↓	17 23 ↓	16 22 ↓	15 21 ↓
Houston Pilots F - 63/64	18 26 ↓	20 26 ↓	20 26 ↓	20 26 ↓	18 26 ↓	17 24 ↓	17 23 ↓	17 24 ↓	17 25 ↓	17 25 ↓	17 25 ↓	17 25 ↓	16 25 ↓	16 26 ↓	16 26 ↓	17 26 ↓	17 28 ↓	17 28 ↓	20 26 ↓	20 25 ↓	18 23 ↓	17 23 ↓	16 23 ↓	15 21 ↓
Houston Pilots E - 51/52	18 26 ↓	18 26 ↓	20 26 ↓	20 26 ↓	18 26 ↓	17 25 ↓	17 24 ↓	17 25 ↓	17 26 ↓	17 26 ↓	17 26 ↓	17 26 ↓	16 26 ↓	16 26 ↓	16 26 ↓	17 26 ↓	17 26 ↓	17 26 ↓	20 26 ↓	20 26 ↓	18 25 ↓	17 24 ↓	17 24 ↓	16 22 ↓
Houston Pilots D - 37/38	18 26 ↓	18 26 ↓	20 26 ↓	20 26 ↓	20 26 ↓	18 25 ↓	17 24 ↓	17 25 ↓	18 26 ↓	18 26 ↓	18 26 ↓	17 26 ↓	17 26 ↓	17 26 ↓	17 26 ↓	17 26 ↓	17 28 ↓	18 28 ↓	20 28 ↓	20 26 ↓	18 25 ↓	17 24 ↓	17 24 ↓	16 23 ↓
Houston Pilots C - 25/26	17 26 ↓	18 26 ↓	20 26 ↓	20 28 ↓	20 26 ↓	18 26 ↓	17 25 ↓	17 25 ↓	18 26 ↓	18 26 ↓	18 26 ↓	17 26 ↓	17 26 ↓	17 26 ↓	17 26 ↓	17 26 ↓	17 28 ↓	17 28 ↓	20 28 ↓	20 26 ↓	18 26 ↓	17 25 ↓	17 25 ↓	16 24 ↓
Houston Pilots B - 11/12	16 25 ↓	17 26 ↓	17 26 ↓	18 26 ↓	17 26 ↓	17 25 ↓	17 24 ↓	17 25 ↓	17 26 ↓	17 26 ↓	17 26 ↓	17 26 ↓	17 26 ↓	17 26 ↓	17 26 ↓	17 26 ↓	16 26 ↓	17 26 ↓	18 26 ↓	18 26 ↓	18 26 ↓	17 25 ↓	17 25 ↓	16 24 ↓
Houston Pilots A - 1 & 2 Bravo	17 26 ↓	18 26 ↓	20 28 ↓	20 29 ↓	20 28 ↓	20 28 ↓	18 26 ↓	20 28 ↓	20 28 ↓	20 29 ↓	20 29 ↓	20 29 ↓	20 29 ↓	20 29 ↓	18 28 ↓	18 28 ↓	20 28 ↓	20 28 ↓	21 30 ↓	21 29 ↓	21 29 ↓	21 29 ↓	20 28 ↓	20 26 ↓

NOTE: This is automated data that may/may not agree with the official BAM thinking that's found on the daily slides. This data should be used as a guide only.

Houston Pilots: SUN. 3/9/2025



Forecast Discussion

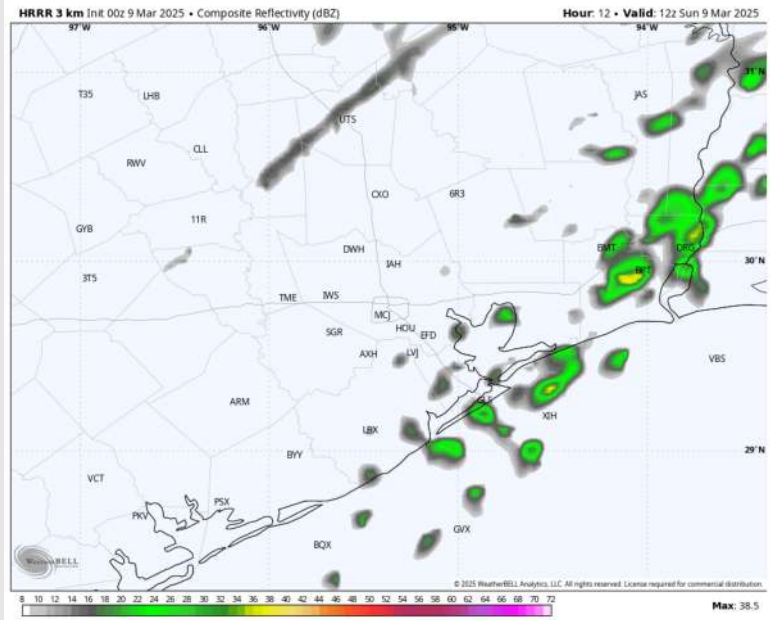
Precip: Favoring a few isolated showers to be possible (20%) from 12AM – 9AM as the front passes. Favoring dry conditions for the rest of the day.

Wind: Winds will be out of the NW for the entire day. **N of Morgan's Point:** Winds will be at 8 - 16 kts for all of Sunday. **S of Morgan's Point:** Winds will be at 15 – 20 kts for all of Sunday. **From 12AM – 4AM, wind gusts ahead of the front could reach 30 – 35 kts. Gusts of up to 25 kts will be possible for all stations through 9PM.**

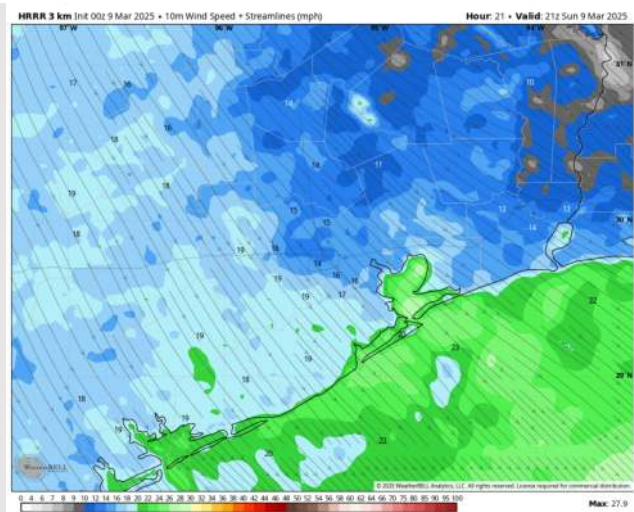
High Temps: **N of Morgan's Point:** Lower 60s F. **S of Morgan's Point:** Upper 50s F.

Visibility: No fog concerns for today.

Precip Image: 7 AM CDT

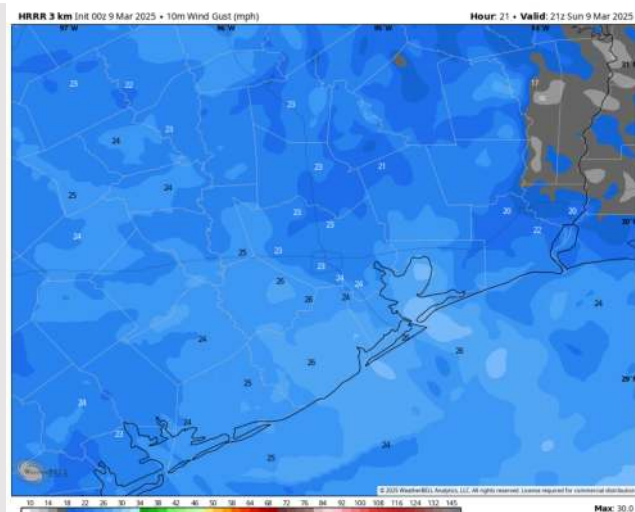


Wind Speed: 4 PM CDT



Wind Speed:
4 PM CDT

MAX GUSTS Today



MAX GUSTS
Today

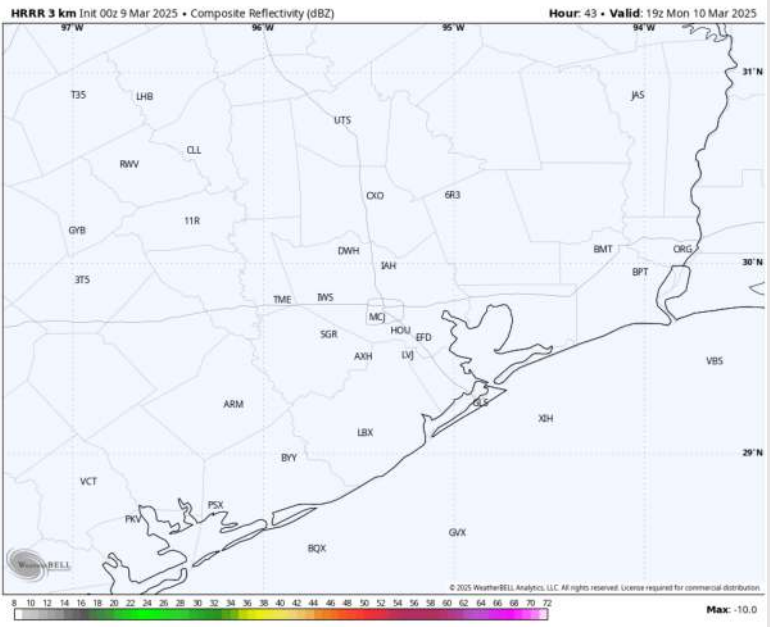
Houston Pilots: MON. 3/10/2025



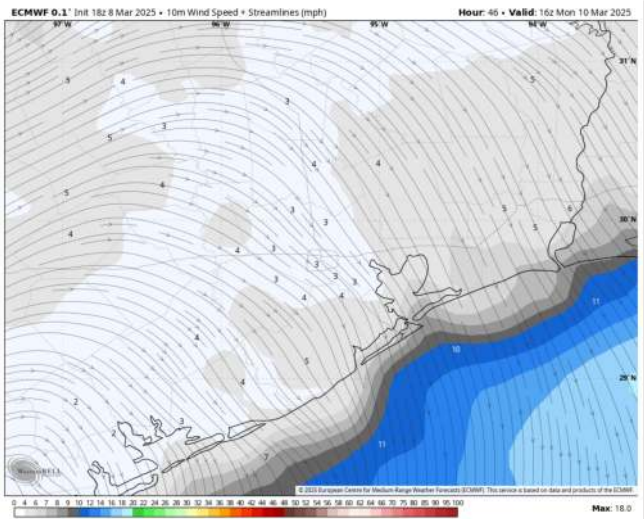
Forecast Discussion

- Precip:** Favoring dry conditions for Monday.
- Wind:** Winds will remain out of the NW through 12PM before shifting to out of the SW for the remainder Monday. **N of Morgan's Point:** Winds will be at 2 – 5 kts throughout the day Monday. **S of Morgan's Point:** Winds will be at 11 - 15 kts through 10AM before becoming 4 – 9 kts for the rest of Monday.
- High Temps:** **N of Morgan's Point:** Upper 60s/Low 70s F. **S of Morgan's Point:** Mid 60s F.
- Visibility:** No fog favored for Monday.

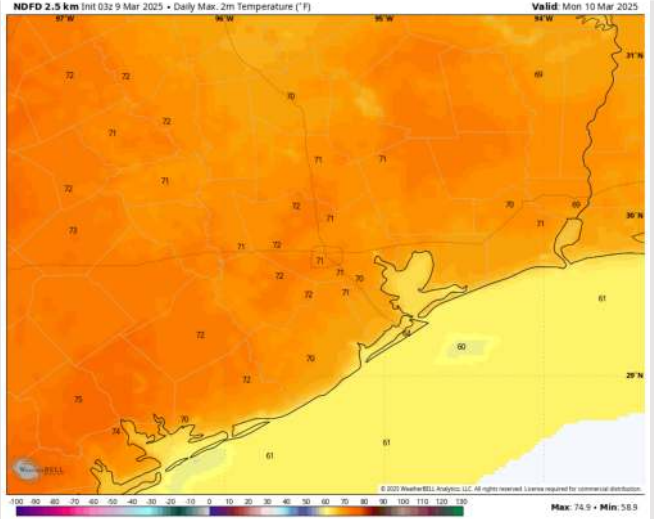
Precip Image: 2 PM CT



Wind Speed
11 AM CT



High Temps
Monday



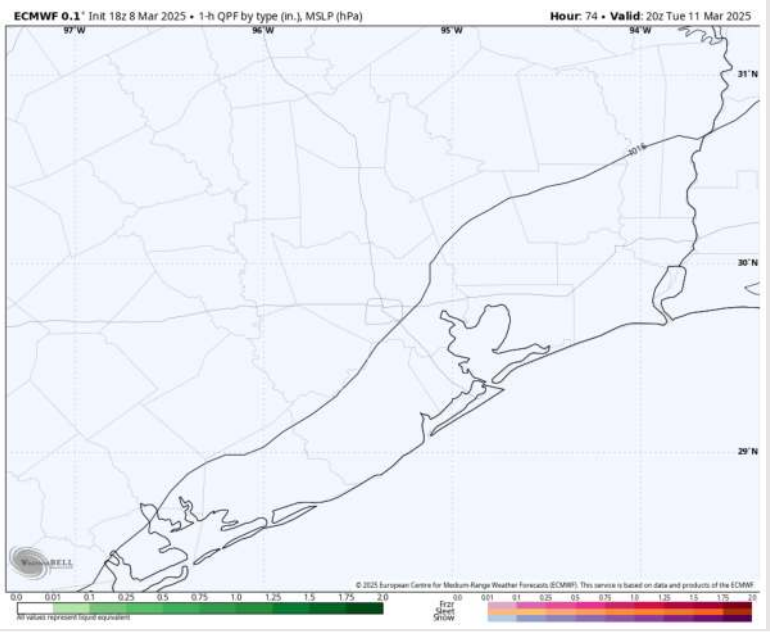
Houston Pilots: TUE. 3/11/2025



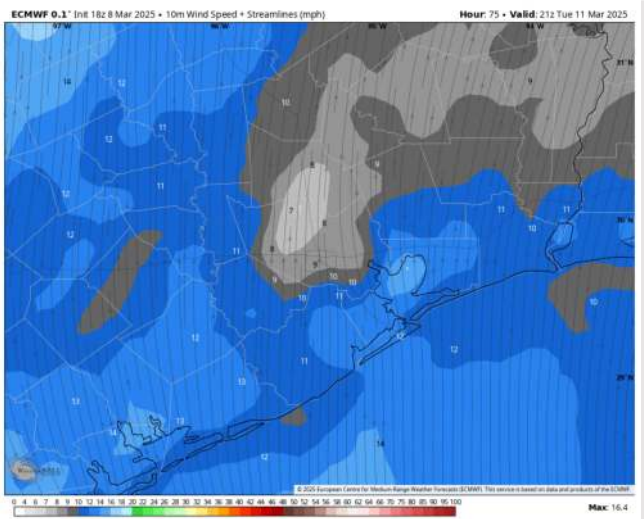
Forecast Discussion

- Precip:** Favoring dry conditions for Tuesday.
- Wind:** Winds will be out of the S for all of Tuesday. **N of Morgan's Point:** Winds will be at 4 – 7 kts for all of Tuesday. **S of Morgan's Point:** Winds will be at 3 – 7 kts through 10 AM, increasing to 7 - 10 kts after that time for the rest of Tuesday.
- High Temps:** **N of Morgan's Point:** Mid 70s F. **S of Morgan's Point:** Mid 60s F.
- Visibility:** No fog concerns for Tuesday at this time.

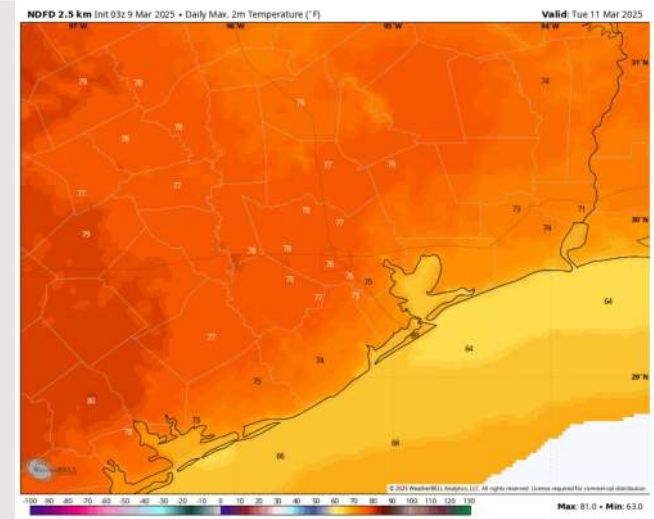
Precip Image: 3 PM CT



Wind Speed: 4 PM CT

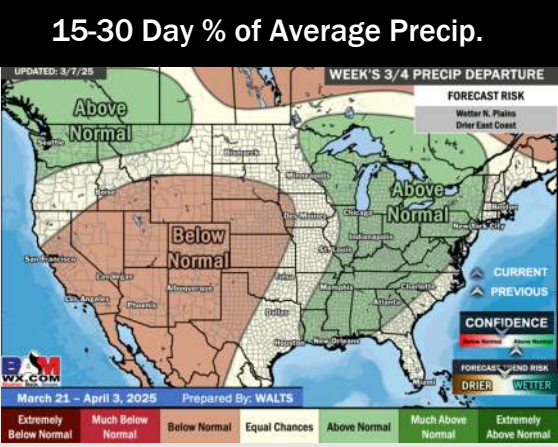
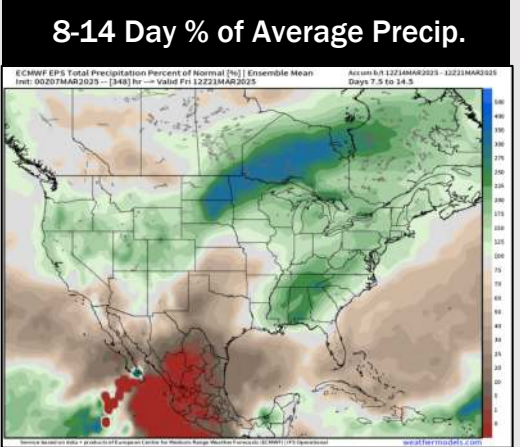
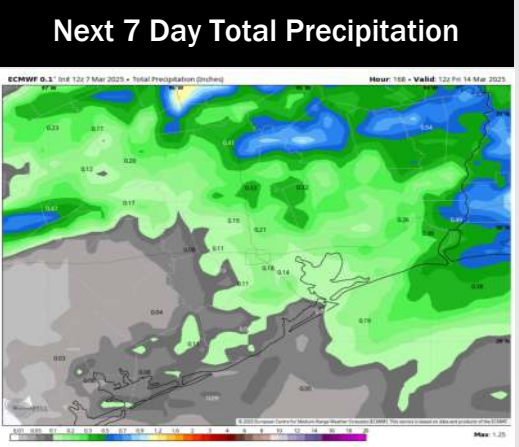
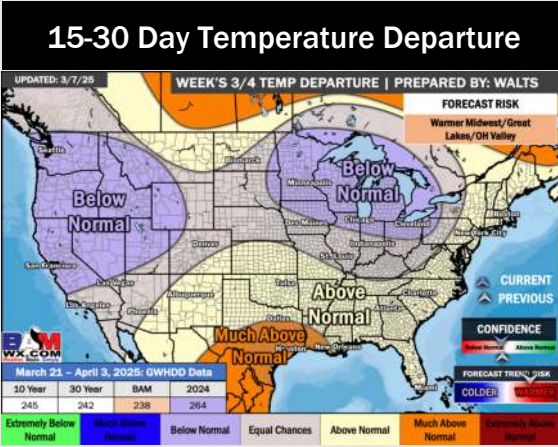
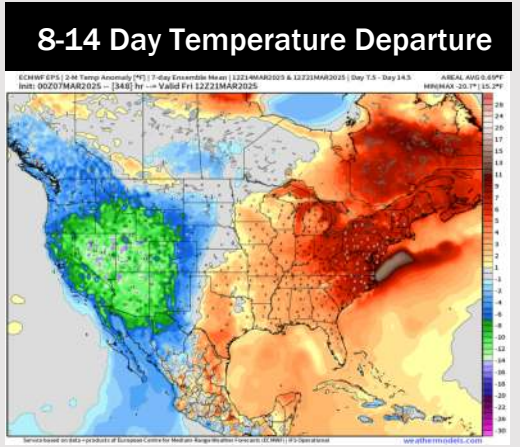
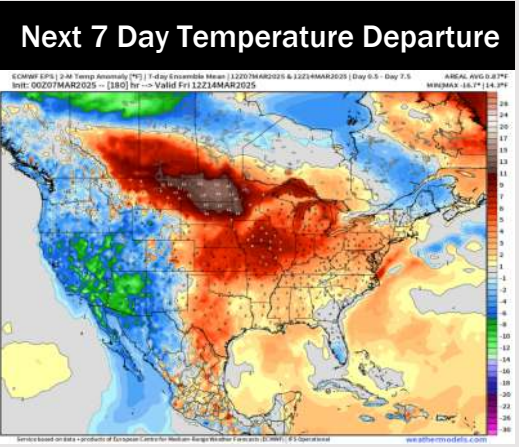


Wind Speed:
4 PM CT



High Temps
Tuesday

Houston Pilots: 3/9/25



- Temps are expected to be near normal for the next 7 days. Scattered rain chances are favored by the weekend and early next week.
- Above normal temps and well below normal rainfall are expected for week 2.
- Much above normal temperatures and below normal precipitation chances are expected for the weeks 3/4 timeframe.