

# Houston Pilots Forecast Package



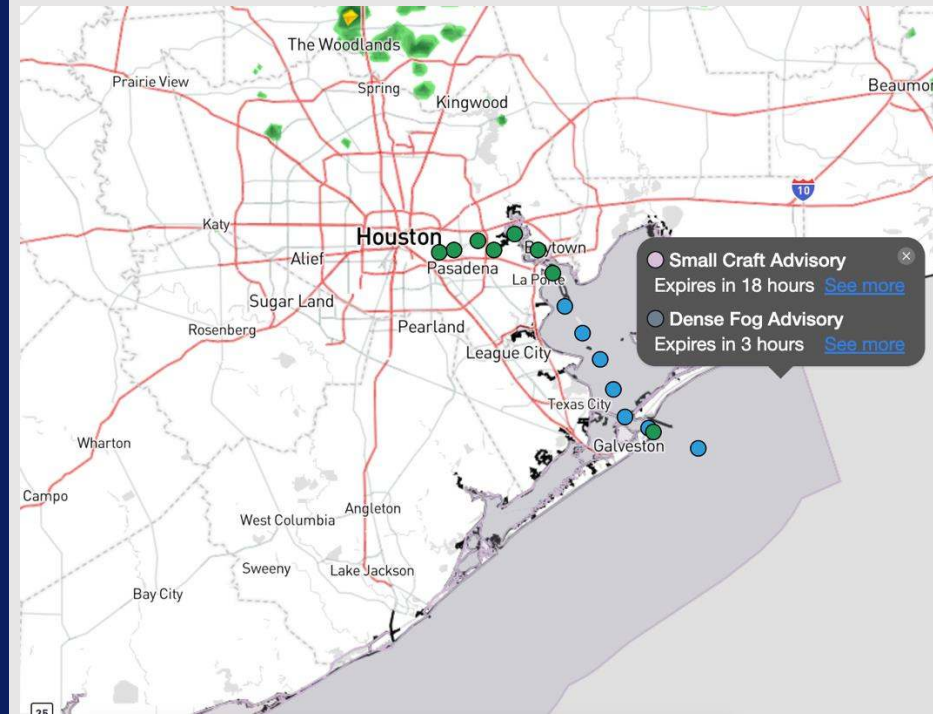
Updated: 1:20 PM CT

Saturday, March 8, 2025

Forecaster: Adam Feick

## Weather Headlines

- Gusty winds of at least 20 - 25 kts are favored at times for all Stations for the next 48 hours. **Gusts will reach 35+ kts as the front passes overnight into SUN AM.**
- Scattered showers and a few storms return to the forecast this evening.
- **Patchy dense fog will continue to be present through the remainder of the day.** See visibility slides for more info on this risk.



Current Radar: 1:00 PM CT

As always, please do not hesitate to reach out to us with any forecast questions at **(317)-560-8122**. Press **1** for forecast questions.

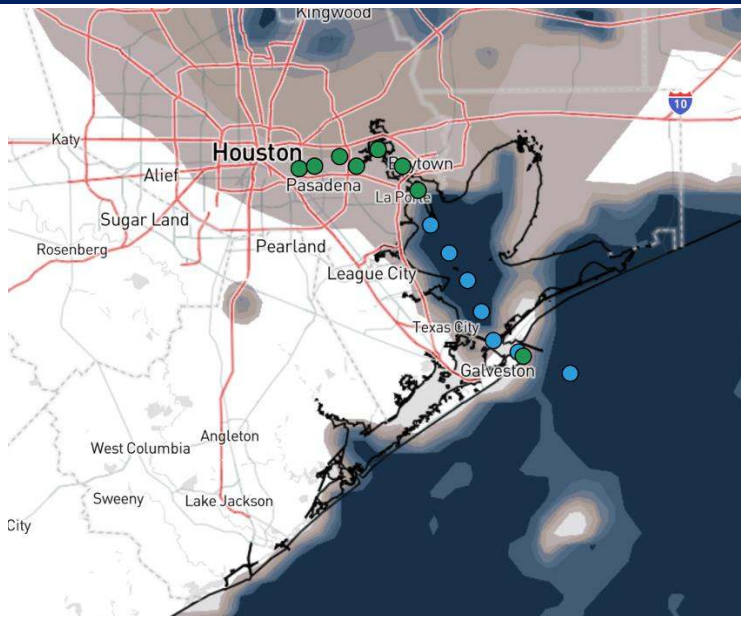
You can also access real-time forecast updates and 24/7 meteorological chat assistance on your **Clarity** app. Click [here](#) for login assistance.



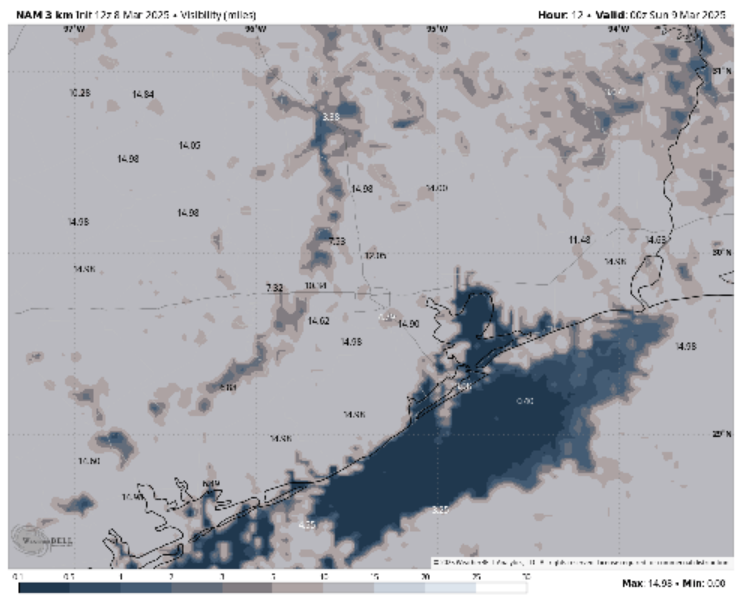
# Houston Pilots Visibility Report



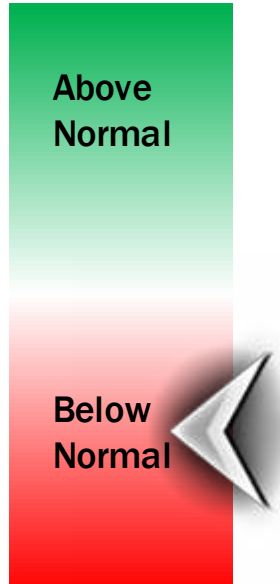
## CURRENT (1:00 PM SAT)



## 6 PM CST SAT VISIBILITY



## Confidence



TIMEFRAME DISCUSSED	THREAT
CURRENT - 12 AM SUN	Medium

**Stations N. of Morgan's Point:** Not anticipating any fog through the rest of the day.

**Stations S. of Morgan's Point:** Wind gusts will begin to pick up a touch near Morgan's Point which will allow for fog to continue become patchier with visibility improved to 2 miles or less. That said, we don't anticipate this fog S of Morgan's Point to clear until 12 AM SUN.

**Main take-away:** Currently, we anticipate fog to be present for stations S of Morgan's Point throughout the rest of the day with this risk clearing once the front pushes through and winds pick up out of the NW. Confidence on exact coverage S of Morgan's Point and fog density is below normal.

# Houston Pilots Extended Range Visibility Report



## Tuesday 3/11/25

No fog concerns for Tuesday.

### Forecast Confidence



## Wednesday 3/12/25

No fog concerns for Wednesday.

### Forecast Confidence



## Thursday 3/13/25

No fog concerns for Thursday.

### Forecast Confidence



## Chance for Fog

Tuesday AM	Unlikely
Tuesday PM	Unlikely
Wednesday AM	Unlikely
Wednesday PM	Unlikely
Thursday AM	Unlikely
Thursday PM	Unlikely

# Houston Pilots Visibility Chart (miles)



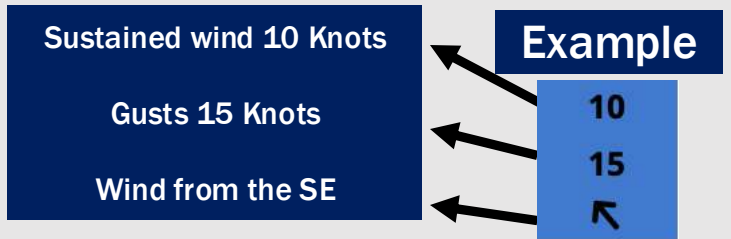
## Forecast Confidence



Visibility	Sat 2 pm	Sat 3 pm	Sat 4 pm	Sat 5 pm	Sat 6 pm	Sat 7 pm	Sat 8 pm	Sat 9 pm	Sat 10 pm	Sat 11 pm	Sun 12 am	Sun 1 am	Sun 3 am	Sun 4 am	Sun 5 am	Sun 6 am	Sun 7 am	Sun 8 am	Sun 9 am	Sun 10 am	Sun 11 am	Sun 12 pm	Sun 1 pm	Sun 2 pm
Houston Pilots N - 610 Bridge	6.9	7.9	10	9	8	6.9	6.9	3.9	5.9	5.9	6.9	8	6.9	8	6.9	9	10	10	10	10	10	10	10	10
Houston Pilots M - Kinder 1	5.9	7.9	10	9	8	6.9	2.5	3.9	5.9	5.9	6.9	8	6.9	8	6.9	9	10	10	10	10	10	10	10	10
Houston Pilots L - Greens Bayou	4.9	6.9	8	6.9	6.9	4.9	0.5	2.9	5.9	5.9	6.9	8	6.9	8	6.9	7.9	10	10	10	10	10	10	10	10
Houston Pilots K - Shell Crude	2.5	6.9	6.9	4.9	6.9	0.7	0.5	2.9	5.9	5.9	6.9	8	6.9	6.9	6.9	7.9	10	10	10	10	10	10	10	10
Houston Pilots J - Lynchburg Ferries	2.5	2.9	2.9	6.9	6.9	4.9	0.5	2	4.9	5.9	6.9	8	6.9	6.9	6.9	7.9	10	10	10	10	10	10	10	10
Houston Pilots I - Exxon 3	2.5	2.9	2.9	4.9	1.6	0.7	0.5	0.5	4.9	5.9	6.9	8	6.9	6.9	5.9	7.9	10	10	10	10	10	10	10	10
Houston Pilots H - Morgans Point	2	2.9	2.9	4.9	0.7	0.5	0.5	0.5	4.9	5.9	6.9	6.9	6.9	6.9	5.9	6.9	10	10	10	10	10	10	10	10
Houston Pilots G - 75/76	2	2	2.5	2.9	0.7	0.5	0.5	0.5	0.5	5.9	6.9	6.9	5.9	4.9	4.9	5.9	6.9	6.9	6.9	6.9	9	10	10	10
Houston Pilots F - 63/64	1.6	2	2.5	2.9	0.7	0.5	0.5	0.5	0.5	5.9	6.9	6.9	5.9	4.9	4.9	5.9	6.9	6.9	6.9	6.9	9	10	10	10
Houston Pilots E - 51/52	0.5	1.1	0.7	2.9	0.7	0.5	0.5	0.5	0.2	4.9	5.9	6.9	5.9	4.9	4.9	5.9	6.9	6.9	6.9	6.9	7.9	10	10	10
Houston Pilots D - 37/38	0.5	1.1	1.1	2.9	0.5	0.5	0.5	0.5	0.2	4.9	5.9	6.9	5.9	4.9	4.9	5.9	6.9	6.9	6.9	6.9	7.9	10	10	10
Houston Pilots C - 25/26	0.5	0.5	2	0.8	0.5	0.5	0.5	0.5	0.2	4.9	5.9	5.9	5.9	4.9	4.9	5.9	6.9	7.9	6.9	6.9	7.9	10	10	10
Houston Pilots B - 11/12	0.5	0.5	1.1	0.5	0.2	0.5	0.5	0.5	0.2	4.9	5.9	5.9	5.9	4.9	4.9	5.9	6.9	6.9	6.9	6.9	6.9	10	10	10
Houston Pilots A - 1 & 2 Bravo	0.5	1.6	1.1	0.5	0.2	0.5	0.5	0.5	0.2	2.5	5.9	5.9	5.9	4.9	3.9	4.9	5.9	6.9	5.9	5.9	6.9	10	10	10

**NOTE: This is automated data that may/may not agree with the official BAM thinking that's found on the daily slides or special visibility report slides. This data should be used as a guide only**

# Houston Pilots Wind Chart



Wind	Sat 2 pm	Sat 3 pm	Sat 4 pm	Sat 5 pm	Sat 6 pm	Sat 7 pm	Sat 8 pm	Sat 9 pm	Sat 10 pm	Sat 11 pm	Sun 12 am	Sun 1 am	Sun 3 am	Sun 4 am	Sun 5 am	Sun 6 am	Sun 7 am	Sun 8 am	Sun 9 am	Sun 10 am	Sun 11 am	Sun 12 pm	Sun 1 pm	Sun 2 pm
Houston Pilots N - 610 Bridge	8 16 ↻	8 15 ↻	8 15 ↻	8 15 ↻	7 14 ↻	7 13 ↻	7 14 ↻	8 15 ↻	9 20 ↻	12 22 ↻	13 25 ↻	14 26 ↻	14 26 ↻	14 26 ↻	13 26 ↻	13 25 ↻	13 25 ↻	13 24 ↻	13 25 ↻	13 26 ↻	14 26 ↻	14 26 ↻	14 26 ↻	14 26 ↻
Houston Pilots M - Kinder 1	8 16 ↻	8 15 ↻	8 15 ↻	8 15 ↻	7 14 ↻	7 13 ↻	7 14 ↻	8 15 ↻	9 18 ↻	12 22 ↻	13 25 ↻	14 26 ↻	14 26 ↻	14 26 ↻	13 26 ↻	13 25 ↻	13 24 ↻	13 24 ↻	13 25 ↻	13 25 ↻	14 26 ↻	14 26 ↻	14 26 ↻	14 25 ↻
Houston Pilots L - Greens Bayou	8 16 ↻	8 15 ↻	8 15 ↻	8 15 ↻	7 14 ↻	6 13 ↻	7 13 ↻	7 15 ↻	8 17 ↻	10 21 ↻	13 24 ↻	14 26 ↻	14 26 ↻	13 26 ↻	13 25 ↻	13 25 ↻	13 24 ↻	12 23 ↻	13 24 ↻	13 25 ↻	13 25 ↻	14 25 ↻	14 25 ↻	13 24 ↻
Houston Pilots K - Shell Crude	8 16 ↻	8 15 ↻	8 15 ↻	8 15 ↻	7 14 ↻	6 12 ↻	6 13 ↻	7 15 ↻	8 16 ↻	10 20 ↻	13 24 ↻	13 26 ↻	13 26 ↻	13 26 ↻	13 25 ↻	13 25 ↻	13 24 ↻	13 23 ↻	13 24 ↻	13 25 ↻	13 25 ↻	14 25 ↻	14 25 ↻	13 24 ↻
Houston Pilots J - Lynchburg Ferries	8 16 ↻	8 15 ↻	8 15 ↻	8 15 ↻	7 14 ↻	6 12 ↻	6 13 ↻	7 14 ↻	8 16 ↻	10 20 ↻	12 23 ↻	13 25 ↻	13 25 ↻	13 25 ↻	13 24 ↻	13 24 ↻	13 23 ↻	12 23 ↻	13 24 ↻	13 24 ↻	13 25 ↻	14 25 ↻	14 25 ↻	13 24 ↻
Houston Pilots I - Exxon 3	9 16 ↻	9 16 ↻	9 15 ↻	9 15 ↻	9 14 ↻	8 13 ↻	8 14 ↻	9 15 ↻	10 16 ↻	13 20 ↻	15 23 ↻	17 26 ↻	17 26 ↻	17 25 ↻	17 25 ↻	17 24 ↻	16 24 ↻	16 23 ↻	16 23 ↻	16 24 ↻	16 24 ↻	16 24 ↻	15 24 ↻	15 24 ↻
Houston Pilots H - Morgans Point	9 16 ↻	9 16 ↻	9 15 ↻	9 15 ↻	9 14 ↻	8 13 ↻	8 13 ↻	8 14 ↻	9 15 ↻	13 20 ↻	15 22 ↻	17 25 ↻	17 25 ↻	17 25 ↻	17 24 ↻	17 24 ↻	16 23 ↻	15 23 ↻	15 23 ↻	16 23 ↻	15 24 ↻	15 24 ↻	15 24 ↻	15 23 ↻
Houston Pilots G - 75/76	10 17 ↻	10 16 ↻	10 16 ↻	10 16 ↻	10 15 ↻	9 14 ↻	9 14 ↻	10 15 ↻	10 16 ↻	14 20 ↻	17 24 ↻	20 26 ↻	20 28 ↻	20 28 ↻	20 28 ↻	20 28 ↻	20 26 ↻	18 25 ↻	18 26 ↻	18 26 ↻	18 26 ↻	17 26 ↻	17 26 ↻	16 25 ↻
Houston Pilots F - 63/64	10 17 ↻	10 16 ↻	10 16 ↻	10 16 ↻	9 15 ↻	9 13 ↻	9 14 ↻	9 15 ↻	10 15 ↻	14 20 ↻	17 24 ↻	20 26 ↻	20 26 ↻	20 28 ↻	20 28 ↻	20 28 ↻	20 26 ↻	18 25 ↻	18 26 ↻	18 26 ↻	18 26 ↻	17 26 ↻	17 26 ↻	16 25 ↻
Houston Pilots E - 51/52	10 16 ↻	9 16 ↻	9 15 ↻	9 15 ↻	9 14 ↻	8 13 ↻	8 13 ↻	9 14 ↻	10 15 ↻	13 20 ↻	16 23 ↻	20 26 ↻	20 28 ↻	20 28 ↻	20 29 ↻	20 28 ↻	20 28 ↻	18 26 ↻	20 26 ↻	20 28 ↻	20 28 ↻	18 28 ↻	18 28 ↻	17 26 ↻
Houston Pilots D - 37/38	9 16 ↻	9 15 ↻	9 15 ↻	8 15 ↻	8 13 ↻	8 12 ↻	8 13 ↻	9 14 ↻	10 15 ↻	13 20 ↻	16 23 ↻	20 26 ↻	20 28 ↻	20 28 ↻	20 29 ↻	20 29 ↻	20 28 ↻	20 26 ↻	20 28 ↻	20 28 ↻	20 28 ↻	18 28 ↻	18 28 ↻	17 26 ↻
Houston Pilots C - 25/26	9 15 ↻	9 15 ↻	9 15 ↻	8 14 ↻	8 13 ↻	8 12 ↻	8 13 ↻	8 14 ↻	9 14 ↻	13 20 ↻	16 23 ↻	18 26 ↻	20 28 ↻	20 29 ↻	20 29 ↻	20 29 ↻	20 28 ↻	20 28 ↻	20 28 ↻	20 29 ↻	20 29 ↻	20 28 ↻	18 28 ↻	18 26 ↻
Houston Pilots B - 11/12	9 14 ↻	8 15 ↻	8 14 ↻	8 13 ↻	8 12 ↻	7 10 ↻	8 12 ↻	8 13 ↻	8 14 ↻	8 12 ↻	15 23 ↻	17 26 ↻	18 28 ↻	20 28 ↻	20 29 ↻	20 29 ↻	20 28 ↻	18 26 ↻	18 28 ↻	18 28 ↻	18 28 ↻	18 28 ↻	18 28 ↻	17 26 ↻
Houston Pilots A - 1 & 2 Bravo	9 14 ↻	8 14 ↻	8 14 ↻	8 14 ↻	8 13 ↻	8 12 ↻	8 13 ↻	9 14 ↻	10 14 ↻	13 20 ↻	16 24 ↻	20 28 ↻	20 29 ↻	21 30 ↻	22 30 ↻	21 30 ↻	21 29 ↻	20 29 ↻	21 29 ↻	21 29 ↻	21 29 ↻	21 29 ↻	21 30 ↻	20 30 ↻

**NOTE: This is automated data that may/may not agree with the official BAM thinking that's found on the daily slides. This data should be used as a guide only.**

# Houston Pilots: SAT. 3/8/2025



## Forecast Discussion

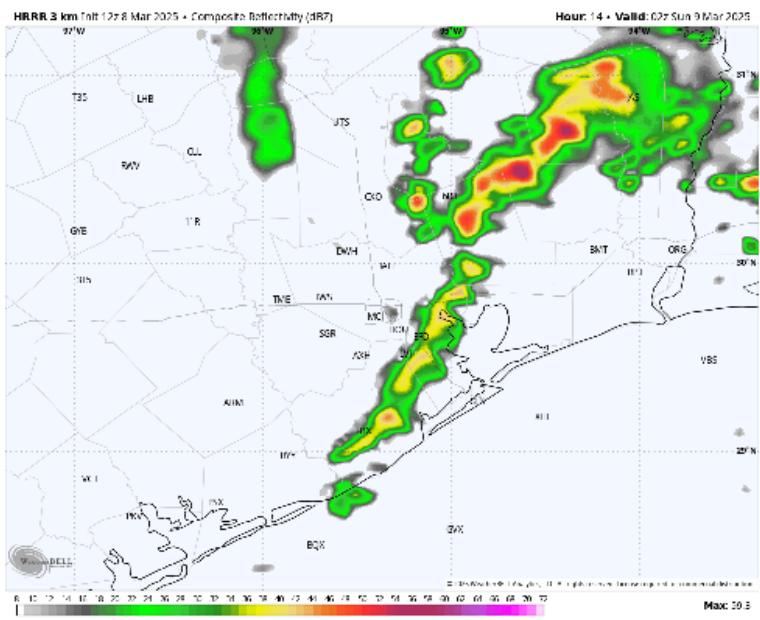
**Precip:** Scattered light showers in play for all Stations through 5 PM (20%). From 5 – 8 PM we can expect some dry time with a few thunderstorms rolling in after 8 PM and clear out by 11 PM

**Wind:** Winds will be out of the SE through 9PM, before quickly shift to be out of the NW through the rest of the evening. **N of Morgan's Point:** Winds will be at 4 – 9 kts through 9 PM, increasing to 10–15 kts after that time. **S of Morgan's Point:** Winds will be at 3 – 8 kts through 10 PM, increasing to 20-25 kts after that time. **A few wind gusts of up to 25 kts will be possible for all stations N of Morgan's Point after ~9PM. Nearing midnight wind gusts may start to reach ~35 kts.**

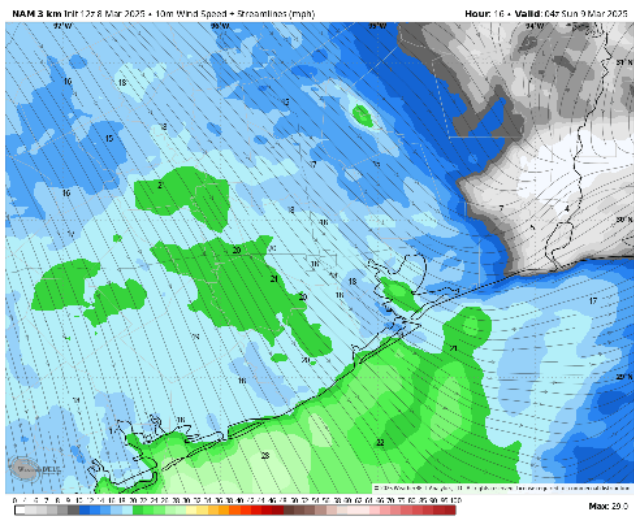
**High Temps:** **N of Morgan's Point:** Low 50s F. **S of Morgan's Point:** Upper 50s F.

**Visibility:** Sea fog continues to impact Stations S. of Morgans point for the rest of the day. Check the visibility slide above for latest details.

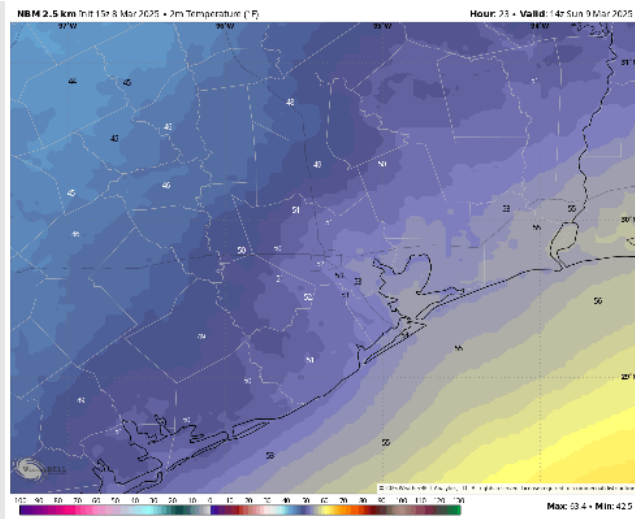
## Precip Image: 8 PM CT



Wind Speed:  
10 PM CT



Low Temps  
SUN AM



# Houston Pilots: SUN. 3/9/2025



## Forecast Discussion

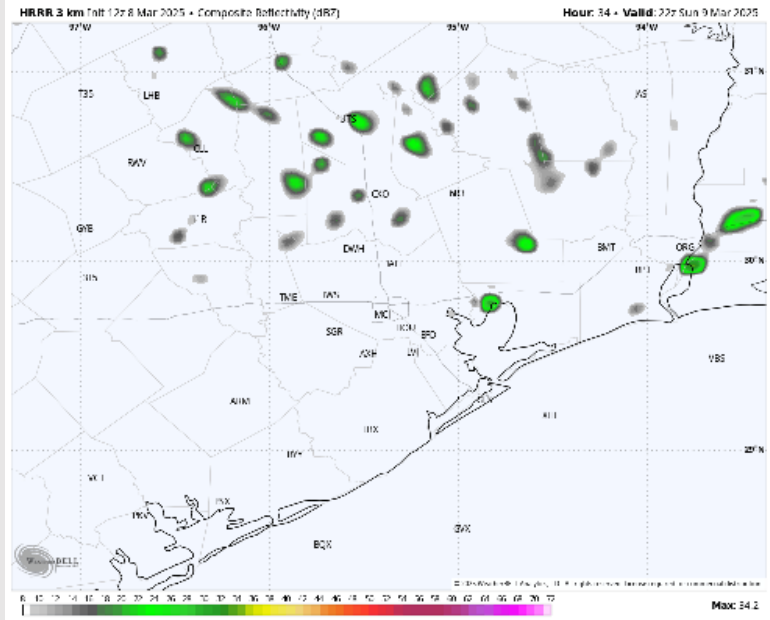
**Precip:** Favoring a few isolated showers to be possible (20%) from 12AM – 9AM as the front passes. A localized light shower or drizzle (20%) will be possible 3PM – 9PM.

**Wind:** Winds will be out of the NW for the entire day. **N of Morgan's Point:** Winds will be at 8 - 16 kts for all of Sunday. **S of Morgan's Point:** Winds will be at 15 – 21 kts for all of Sunday. **From 12AM – 4AM, wind gusts ahead of the front could reach 30 – 40 kts. Gusts of up to 25 kts will be possible for all stations through 9PM.**

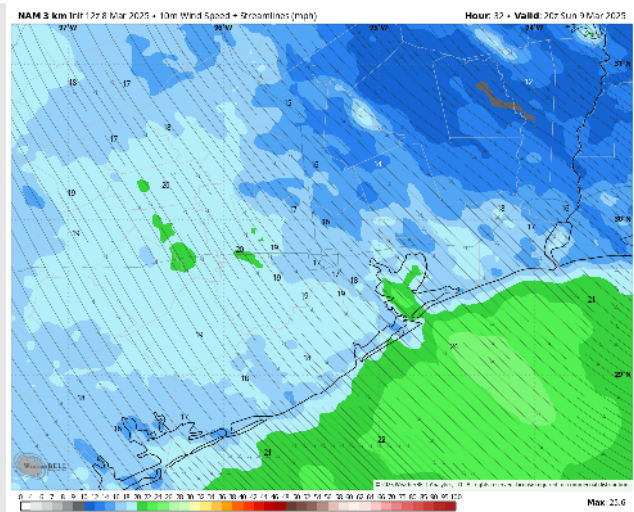
**High Temps:** **N of Morgan's Point:** Lower 60s F. **S of Morgan's Point:** Upper 50s F.

**Visibility:** No fog concerns for the day Sunday.

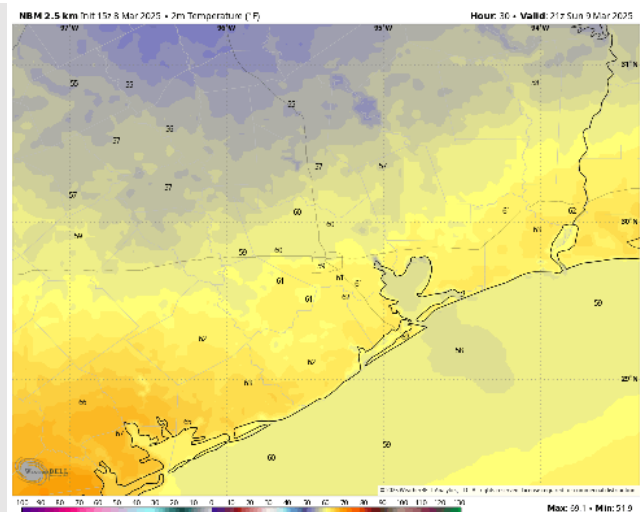
## Precip Image: 4 PM CDT



Wind Speed:  
3 PM CDT



High Temps  
Sunday



# Houston Pilots: MON. 3/10/2025



## Forecast Discussion

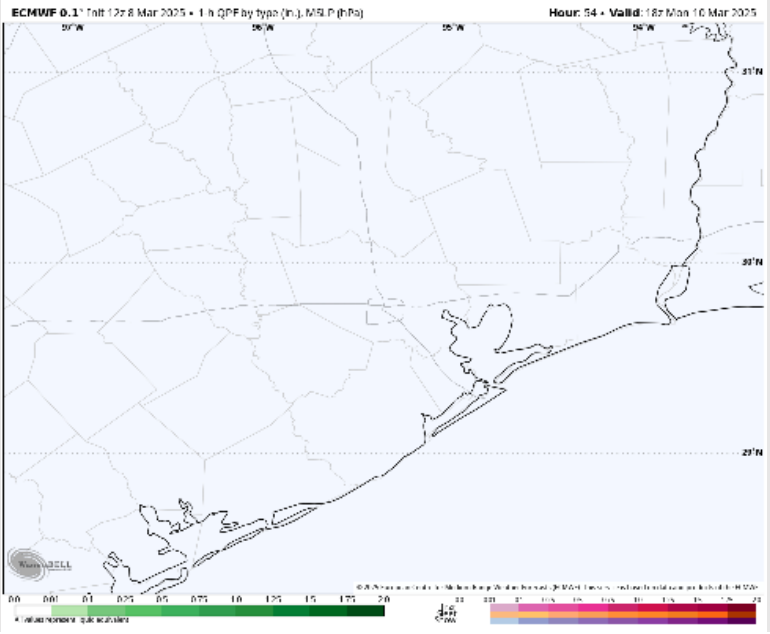
**Precip:** Favoring dry conditions for Monday.

**Wind:** Winds will remain out of the NW through 12PM before shifting to out of the SW for the remainder Monday. **N of Morgan's Point:** Winds will be at 2 – 5 kts throughout the day Monday. **S of Morgan's Point:** Winds will be at 11 - 15 kts through 10AM before becoming 4 – 9 kts for the rest of Monday. **Gusts of 20 – 25 kts will be possible for all stations through 9AM.**

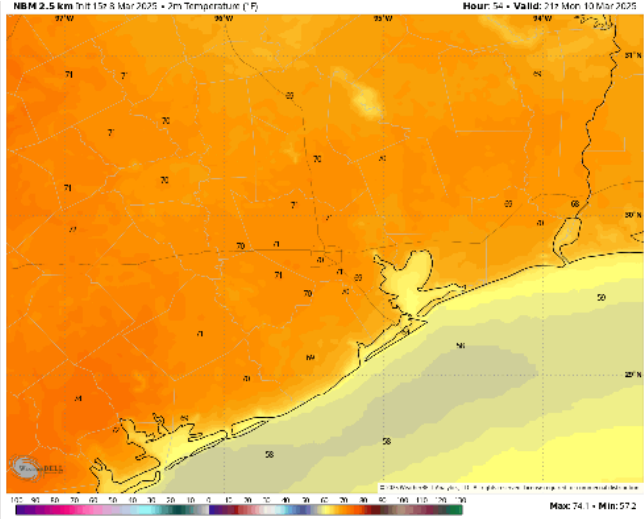
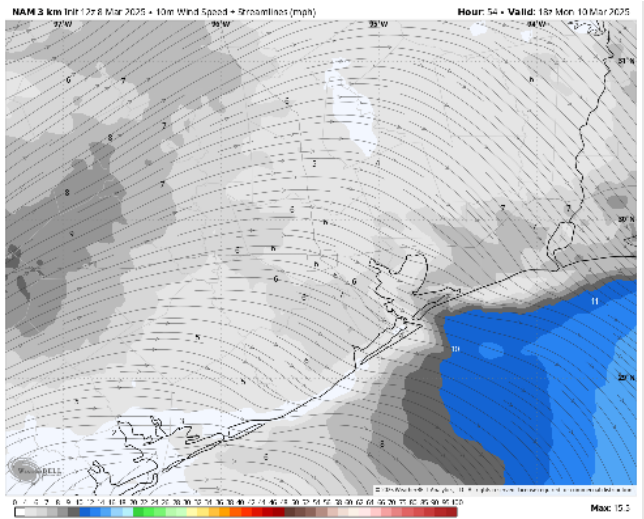
**High Temps:** **N of Morgan's Point:** Upper 60s/Low 70s F. **S of Morgan's Point:** Mid 60s F.

**Visibility:** No fog favored for Monday.

## Precip Image: 2 PM CDT



## Wind Speed 12 PM CDT

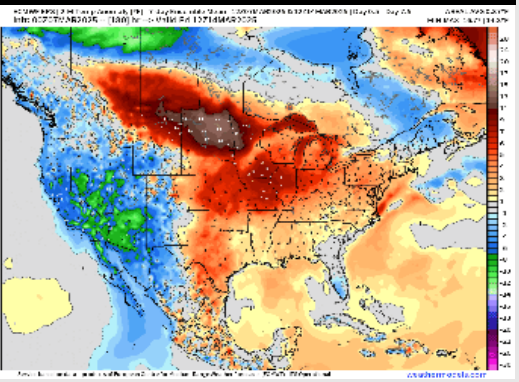


**High Temps Monday**

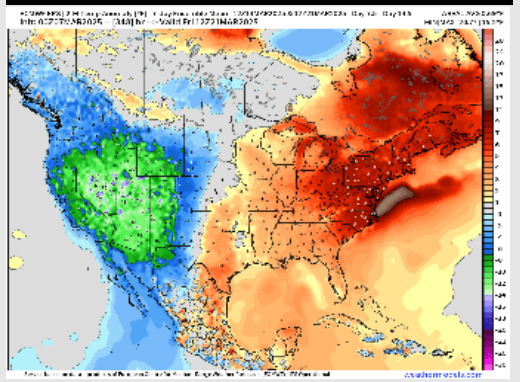


# Houston Pilots: 3/8/25

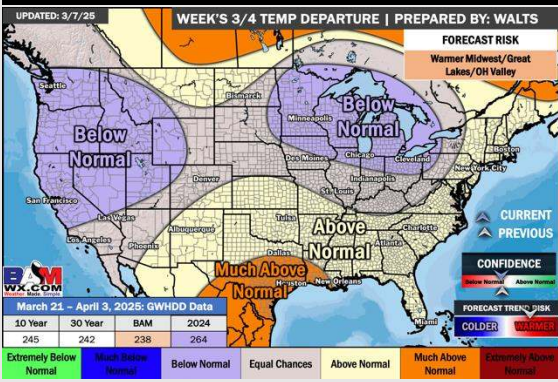
**Next 7 Day Temperature Departure**



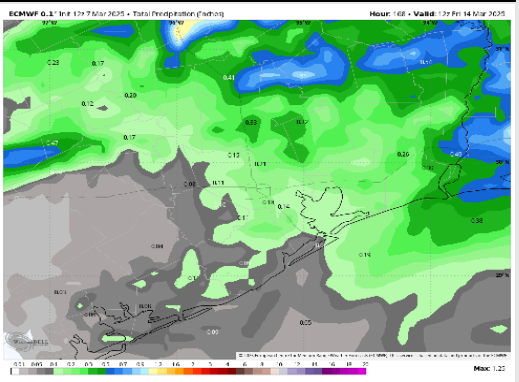
**8-14 Day Temperature Departure**



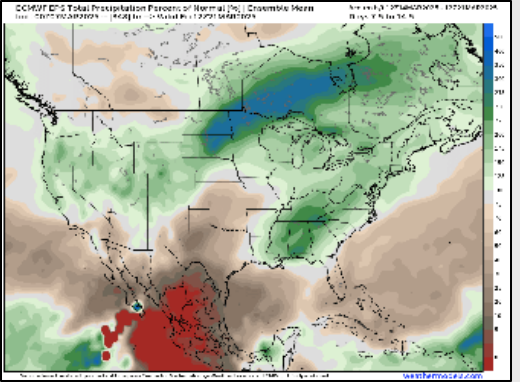
**15-30 Day Temperature Departure**



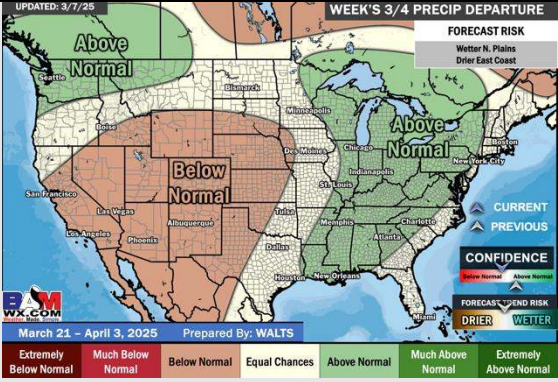
**Next 7 Day Total Precipitation**



**8-14 Day % of Average Precip.**



**15-30 Day % of Average Precip.**



- Temps are expected to be near normal for the next 7 days. Scattered rain chances are favored by the weekend and early next week.
- Above normal temps and well below normal rainfall are expected for week 2.
- Much above normal temperatures and below normal precipitation chances are expected for the weeks 3/4 timeframe.