

Houston Pilots Forecast Package



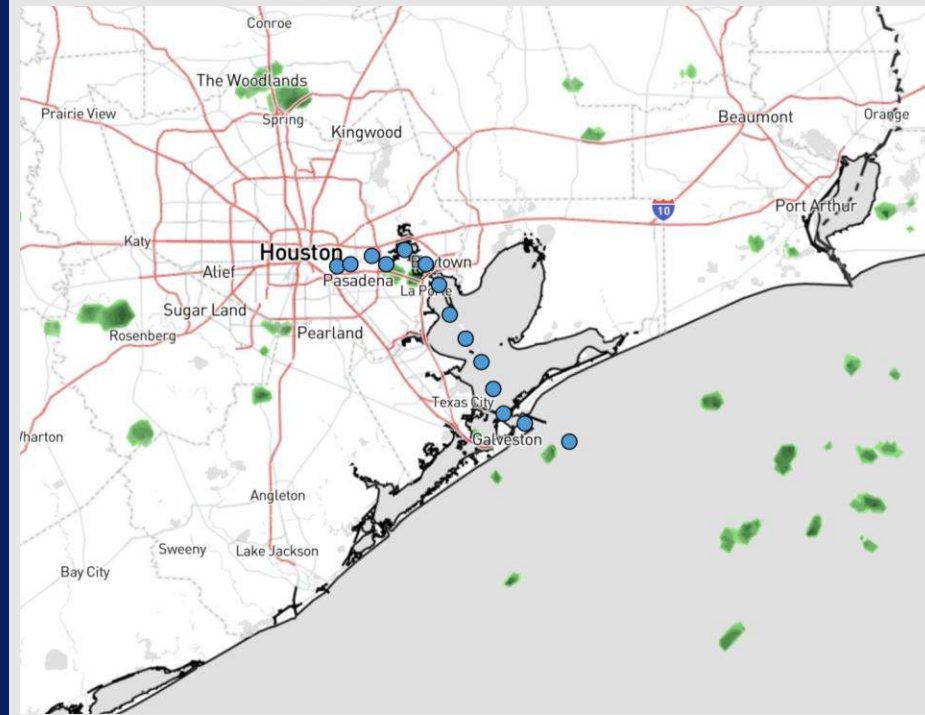
Updated: 5:50 AM CT

Saturday, March 8, 2025

Forecaster: Alyssa Elliott

Weather Headlines

- Gusty winds of at least 20 - 25 kts are favored at times for all Stations for the next 48 hours. **Gusts will reach 35+ kts as the front passes overnight into SUN AM.**
- Scattered showers and a few storms return to the forecast today.
- **Dense fog is present this AM. Expecting this risk to continue at the Boarding Station through the PM.** See visibility slides for more info on this risk.



Current Radar: 5:10 AM CT

As always, please do not hesitate to reach out to us with any forecast questions at **(317)-560-8122**. Press 1 for forecast questions.

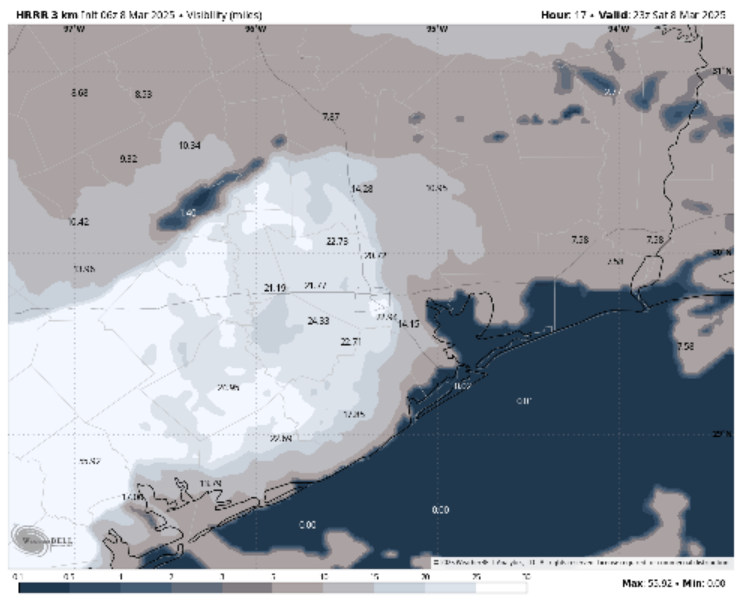
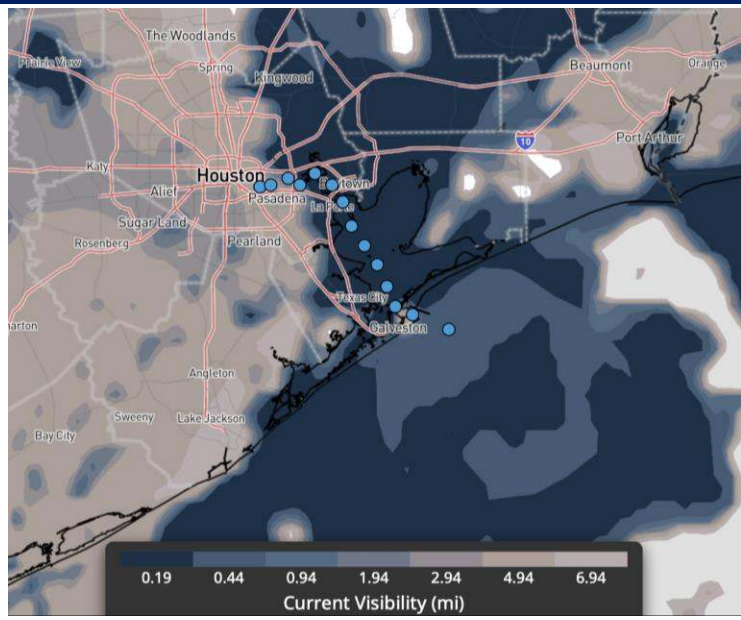
You can also access real-time forecast updates and 24/7 meteorological chat assistance on your [Clarity](#) app. Click [here](#) for login assistance.



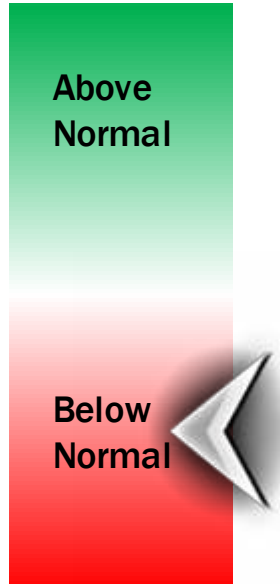
Houston Pilots Visibility Report



CURRENT (5:15 AM SAT) 5 PM CST SAT VISIBILITY



Confidence



Dense sea fog is impacting all stations this AM with visibility at less than 0.5 mile.

Stations N. of Morgan's Point: Anticipating sea fog will begin to become patchier in nature by 7 – 8 AM as wind gusts start to pick up a touch at these stations. Visibility may improve to 1 – 2 miles after 8 AM and be patchy until it clears by 11 AM CT.

Stations S. of Morgan's Point: Fog is expected to remain widespread and dense with visibility at 0.5 – 1 mile through ~2 PM today. After 2 PM, gusts may begin to pick up a touch near Morgan's Point which may allow for fog to become a bit patchier with visibility improved to 2 miles or less. That said, we don't anticipate this fog S of Morgan's Point to clear until 12 AM SUN.

Main take-away: At this time, we anticipate fog to be present for stations S of Morgan's Point throughout the entire day with this risk clearing once the front pushes through and winds pick up out of the NW. Confidence on exact coverage S of Morgan's Point and fog density after 2 PM is below normal.

TIMEFRAME DISCUSSED	THREAT
CURRENT - 12 AM SUN	High

Houston Pilots Extended Range Visibility Report



Tuesday 3/11/25

No fog concerns for Tuesday.

Forecast Confidence



Thursday 3/13/25

No fog concerns for Thursday.

Forecast Confidence



Wednesday 3/12/25

No fog concerns for Wednesday.

Forecast Confidence



Chance for Fog

Tuesday AM	Unlikely
Tuesday PM	Unlikely
Wednesday AM	Unlikely
Wednesday PM	Unlikely
Thursday AM	Unlikely
Thursday PM	Unlikely

Houston Pilots Visibility Chart (miles)



Forecast Confidence



Visibility	Sat 7 am	Sat 8 am	Sat 9 am	Sat 10 am	Sat 11 am	Sat 12 pm	Sat 1 pm	Sat 2 pm	Sat 3 pm	Sat 4 pm	Sat 5 pm	Sat 6 pm	Sat 7 pm	Sat 8 pm	Sat 9 pm	Sat 10 pm	Sat 11 pm	Sun 12 am	Sun 1 am	Sun 3 am	Sun 4 am	Sun 5 am	Sun 6 am	Sun 7 am
Houston Pilots N - 610 Bridge	0.7	0.2	0.5	2.9	4.9	5.9	6.9	8	9	10	9	8	8	9	9	9	9	9	9	9	8	6.9	9	10
Houston Pilots M - Kinder 1	0.7	0.5	0.5	2.9	4.9	5.9	6.9	8	9	10	9	8	8	9	9	9	9	9	9	8	8	6.9	9	10
Houston Pilots L - Greens Bayou	1.1	0.5	0.2	2.5	3.9	4.9	6.9	6.9	7.9	9	9	8	6.9	8	8	8	7.9	7.9	9	8	6.9	6.9	8	10
Houston Pilots K - Shell Crude	1.1	0.5	0.5	2.9	2.9	4.9	6.9	6.9	7.9	9	8	6.9	6.9	8	8	8	7.9	7.9	9	8	6.9	6.9	8	10
Houston Pilots J - Lynchburg Ferries	1.1	0.5	0.2	0.5	1.1	4.9	5.9	6.9	7.9	9	8	6.9	4.9	4.9	3.9	3.9	2.9	0.8	4.9	4.9	0.5	0.5	3.9	5.9
Houston Pilots I - Exxon 3	1.1	0.5	0.5	0.7	1.1	1.1	2	3.9	2.9	7.9	6.9	5.9	4.9	4.9	3.9	3.9	2.9	0.8	0.5	0.5	0.5	0.2	3.9	4.9
Houston Pilots H - Morgans Point	0.7	0.5	0.5	0.7	1.1	1.1	1.1	1.6	1.6	1.1	2	2	1.6	1.1	0.5	0.5	0.5	0.5	0.5	0.2	0.2	0.2	0.5	2.9
Houston Pilots G - 75/76	0.5	0.5	0.2	0.5	1.1	1.1	0.7	1.1	1.1	1.1	2	1.6	1.1	1.1	0.5	0.5	0.5	0.5	0.3	0.2	0.2	0.2	9	9
Houston Pilots F - 63/64	0.5	0.5	0.2	0.5	1.1	1.1	0.7	1.1	1.1	1.1	2	1.6	1.1	1.1	0.5	0.5	0.5	0.5	0.3	0.2	0.2	0.2	9	9
Houston Pilots E - 51/52	0.5	0.2	0.2	0.5	0.7	1.1	0.7	1.1	0.8	0.8	1.1	1.1	1.1	0.5	0.5	0.5	0.5	0.5	0.3	0.2	0.2	0.2	9	9
Houston Pilots D - 37/38	0.2	0.2	0.2	0.5	0.7	1.1	0.5	1.1	0.8	0.8	1.1	1.1	1.1	0.5	0.5	0.5	0.5	0.5	0.3	0.2	0.2	0.2	9	9
Houston Pilots C - 25/26	0.2	0.2	0.2	0.5	0.7	1.1	0.5	1.1	0.8	0.8	1.1	1.1	1.1	0.5	0.5	0.5	0.5	0.5	0.3	0.2	0.2	0.2	9	9
Houston Pilots B - 11/12	0.2	0.2	0.2	0.5	0.7	0.7	0.5	1.1	0.5	0.8	1.1	0.7	0.5	0.5	0.5	0.2	0.5	0.3	0.3	0.2	0.2	0.2	9	9
Houston Pilots A - 1 & 2 Bravo	0.2	0.2	0.2	0.2	0.5	0.5	0.5	0.5	0.5	0.3	0.5	0.2	0.5	0.5	0.5	0.2	0.3	0.3	0.3	0.2	0.2	0.2	9	9

NOTE: This is automated data that may/may not agree with the official BAM thinking that's found on the daily slides or special visibility report slides. This data should be used as a guide only

Houston Pilots Wind Chart



Sustained wind 10 Knots

Gusts 15 Knots

Wind from the SE

Example

10
15
↙

Wind	Sat 7 am	Sat 8 am	Sat 9 am	Sat 10 am	Sat 11 am	Sat 12 pm	Sat 1 pm	Sat 2 pm	Sat 3 pm	Sat 4 pm	Sat 5 pm	Sat 6 pm	Sat 7 pm	Sat 8 pm	Sat 9 pm	Sat 10 pm	Sat 11 pm	Sun 12 am	Sun 1 am	Sun 3 am	Sun 4 am	Sun 5 am	Sun 6 am	Sun 7 am
Houston Pilots N - 610 Bridge	3 7 ↙	5 8 ↙	5 9 ↙	6 12 ↙	7 13 ↙	8 15 ↙	8 16 ↙	8 15 ↙	8 15 ↙	8 15 ↙	8 15 ↙	7 14 ↙	7 14 ↙	8 15 ↙	8 16 ↙	10 20 ↙	12 23 ↙	13 25 ↙	14 26 ↙	14 26 ↙	13 26 ↙	13 25 ↙	13 25 ↙	13 25 ↙
Houston Pilots M - Kinder 1	3 7 ↙	5 8 ↙	5 9 ↙	6 12 ↙	7 13 ↙	8 15 ↙	8 16 ↙	8 15 ↙	8 15 ↙	8 15 ↙	8 15 ↙	7 14 ↙	7 14 ↙	7 15 ↙	8 16 ↙	10 20 ↙	12 23 ↙	13 25 ↙	14 26 ↙	14 26 ↙	13 26 ↙	13 25 ↙	13 25 ↙	13 25 ↙
Houston Pilots L - Greens Bayou	3 7 ↙	3 8 ↙	5 9 ↙	6 12 ↙	7 13 ↙	8 15 ↙	8 16 ↙	8 15 ↙	8 15 ↙	8 15 ↙	8 15 ↙	7 14 ↙	7 13 ↙	7 14 ↙	8 15 ↙	9 18 ↙	10 22 ↙	13 24 ↙	13 26 ↙	13 26 ↙	13 26 ↙	13 25 ↙	13 25 ↙	13 24 ↙
Houston Pilots K - Shell Crude	3 7 ↙	3 8 ↙	5 9 ↙	6 12 ↙	7 13 ↙	8 15 ↙	8 16 ↙	8 15 ↙	8 15 ↙	8 15 ↙	8 15 ↙	7 14 ↙	6 13 ↙	7 14 ↙	8 15 ↙	9 18 ↙	10 21 ↙	12 23 ↙	13 26 ↙	13 26 ↙	13 25 ↙	13 25 ↙	13 25 ↙	13 24 ↙
Houston Pilots J - Lynchburg Ferries	3 7 ↙	3 8 ↙	5 9 ↙	6 12 ↙	7 13 ↙	8 15 ↙	8 16 ↙	8 15 ↙	8 15 ↙	8 15 ↙	8 15 ↙	7 13 ↙	6 13 ↙	7 14 ↙	8 15 ↙	8 17 ↙	10 21 ↙	12 23 ↙	13 25 ↙	13 25 ↙	13 25 ↙	13 24 ↙	13 24 ↙	13 24 ↙
Houston Pilots I - Exxon 3	6 8 ↙	6 9 ↙	6 10 ↙	8 12 ↙	8 13 ↙	8 15 ↙	9 16 ↙	9 16 ↙	9 15 ↙	9 15 ↙	9 15 ↙	9 14 ↙	8 14 ↙	9 14 ↙	10 15 ↙	12 17 ↙	14 21 ↙	15 23 ↙	17 25 ↙	17 25 ↙	17 25 ↙	17 24 ↙	17 24 ↙	16 24 ↙
Houston Pilots H - Morgans Point	5 7 ↙	6 8 ↙	6 10 ↙	7 12 ↙	8 13 ↙	8 15 ↙	9 16 ↙	9 15 ↙	9 15 ↙	9 15 ↙	9 15 ↙	9 14 ↙	8 14 ↙	8 14 ↙	9 15 ↙	10 16 ↙	13 20 ↙	15 23 ↙	17 25 ↙	17 25 ↙	17 25 ↙	17 24 ↙	17 24 ↙	16 24 ↙
Houston Pilots G - 75/76	6 8 ↙	6 9 ↙	7 10 ↙	8 13 ↙	8 14 ↙	9 15 ↙	10 17 ↙	10 16 ↙	10 16 ↙	10 16 ↙	10 16 ↙	10 15 ↙	9 14 ↙	9 14 ↙	10 15 ↙	12 17 ↙	15 21 ↙	17 24 ↙	20 26 ↙	20 26 ↙	20 26 ↙	20 28 ↙	20 26 ↙	20 26 ↙
Houston Pilots F - 63/64	6 8 ↙	6 9 ↙	7 10 ↙	8 13 ↙	8 13 ↙	9 15 ↙	10 17 ↙	9 16 ↙	9 16 ↙	10 16 ↙	10 16 ↙	9 14 ↙	9 14 ↙	9 14 ↙	10 15 ↙	12 16 ↙	14 20 ↙	17 24 ↙	20 26 ↙	20 26 ↙	20 26 ↙	20 28 ↙	20 26 ↙	20 26 ↙
Houston Pilots E - 51/52	6 8 ↙	6 9 ↙	7 10 ↙	8 12 ↙	8 13 ↙	9 15 ↙	9 16 ↙	9 16 ↙	9 15 ↙	9 15 ↙	9 15 ↙	8 14 ↙	8 14 ↙	9 14 ↙	10 15 ↙	10 16 ↙	14 20 ↙	16 24 ↙	20 26 ↙	20 28 ↙	20 28 ↙	20 29 ↙	20 28 ↙	20 26 ↙
Houston Pilots D - 37/38	6 8 ↙	6 9 ↙	7 10 ↙	8 12 ↙	8 13 ↙	8 15 ↙	9 16 ↙	9 15 ↙	9 15 ↙	9 15 ↙	9 14 ↙	8 13 ↙	8 13 ↙	8 13 ↙	9 14 ↙	10 16 ↙	13 20 ↙	16 24 ↙	20 26 ↙	20 28 ↙	20 28 ↙	20 29 ↙	20 28 ↙	20 26 ↙
Houston Pilots C - 25/26	6 8 ↙	6 9 ↙	6 10 ↙	8 12 ↙	8 13 ↙	8 14 ↙	9 15 ↙	9 15 ↙	9 15 ↙	9 15 ↙	8 14 ↙	8 13 ↙	8 13 ↙	8 13 ↙	9 14 ↙	10 15 ↙	13 20 ↙	16 24 ↙	20 28 ↙	20 28 ↙	20 29 ↙	20 29 ↙	20 29 ↙	20 28 ↙
Houston Pilots B - 11/12	5 8 ↙	6 9 ↙	6 9 ↙	7 10 ↙	8 13 ↙	8 14 ↙	9 15 ↙	8 14 ↙	8 14 ↙	8 14 ↙	8 13 ↙	8 13 ↙	7 12 ↙	8 12 ↙	9 13 ↙	13 14 ↙	13 18 ↙	15 23 ↙	17 26 ↙	18 28 ↙	18 28 ↙	20 29 ↙	20 28 ↙	18 26 ↙
Houston Pilots A - 1 & 2 Bravo	6 9 ↙	7 10 ↙	8 12 ↙	8 12 ↙	8 13 ↙	8 14 ↙	9 15 ↙	8 14 ↙	8 14 ↙	8 14 ↙	8 13 ↙	8 13 ↙	8 13 ↙	8 13 ↙	9 14 ↙	10 15 ↙	13 20 ↙	17 25 ↙	20 29 ↙	21 30 ↙	21 30 ↙	21 30 ↙	21 30 ↙	21 29 ↙

NOTE: This is automated data that may/may not agree with the official BAM thinking that's found on the daily slides. This data should be used as a guide only.

Houston Pilots: SAT. 3/8/2025



Forecast Discussion

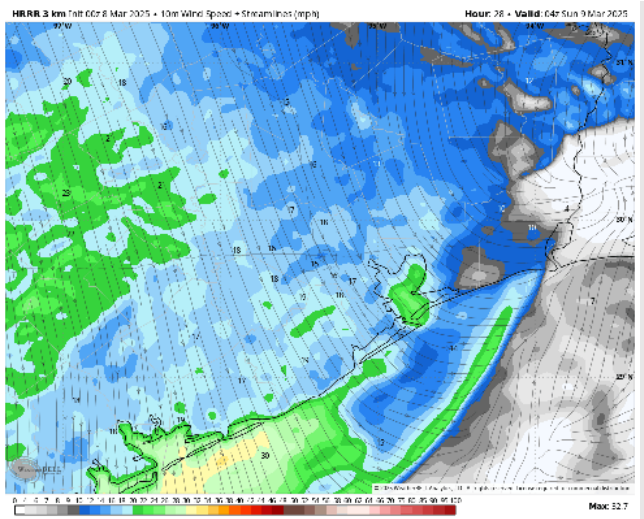
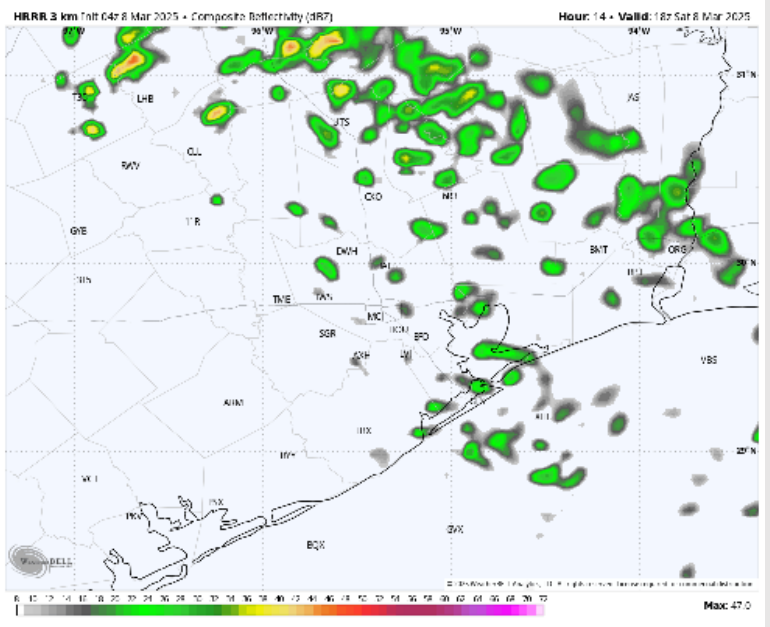
Precip: Scattered light showers in play for all Stations through 6 PM (20%). From 6 – 9 PM we can expect some dry time with a few thunderstorms rolling in after 9 PM.

Wind: Winds will be out of the SE through 6 AM, before shifting out of the E/SE. Winds will then quickly shift to be out of the NW after 9PM. **N of Morgan's Point:** Winds will be at 2 – 7 kts through 9 PM, increasing to 10–15 kts after that time. **S of Morgan's Point:** Winds will be at 3 – 8 kts through 10 PM, increasing to 20–25 kts after that time. **A few wind gusts of up to 25 kts will be possible for all stations N of Morgan's Point after ~9PM. Nearing midnight wind gusts may start to reach ~35 kts.**

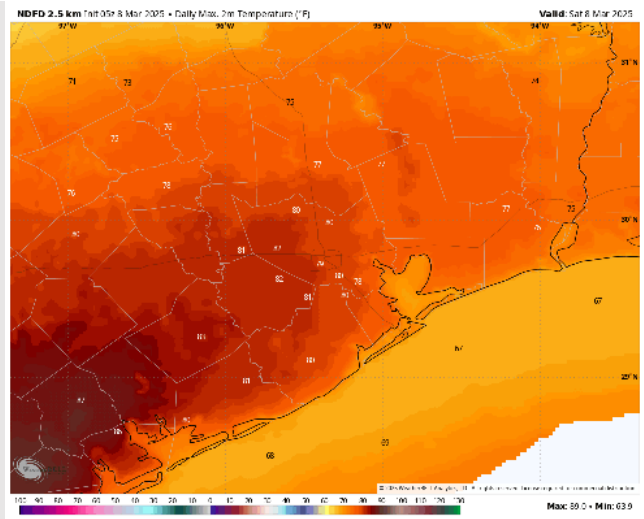
High Temps: **N of Morgan's Point:** Upper 70s / Near 80 F. **S of Morgan's Point:** Low 70s F.

Visibility: Sea fog continues to impact all stations this AM. See visibility slide for more details on this threat.

Precip Image: 12 PM CT



Wind Speed:
10 PM CT



High Temps
Saturday

Houston Pilots: SUN. 3/9/2025



Forecast Discussion

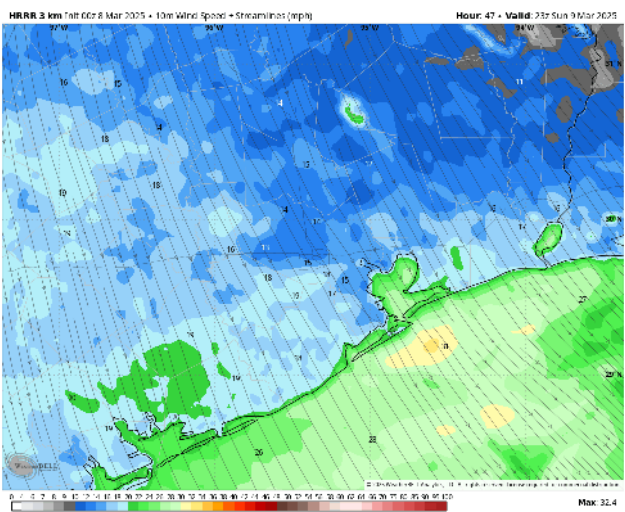
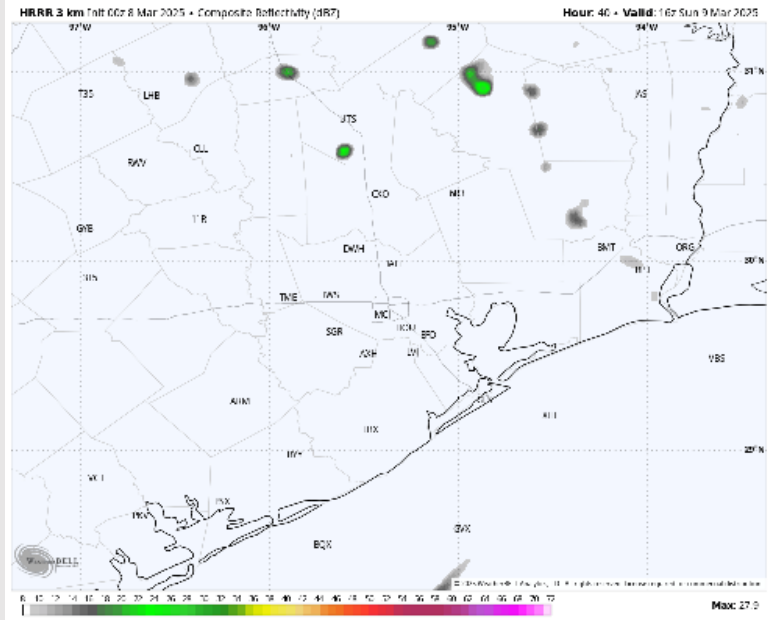
Precip: Favoring a few isolated showers to be possible (20%) from 5AM – 12PM as the front passes. Dry conditions will be favored the rest of the day.

Wind: Winds will be out of the NW for the entire day. **N of Morgan's Point:** Winds will be at 6 - 10 kts for all of Sunday. **S of Morgan's Point:** Winds will be at 9 - 14 kts for all of Sunday, with winds of 14 - 19 kts for the Boarding Station and 11/12 for the entire day. **From 12AM - 4AM, wind gusts ahead of the front could reach 35 - 40 kts. Gusts of up to 25 kts will be possible for all stations through 8PM.**

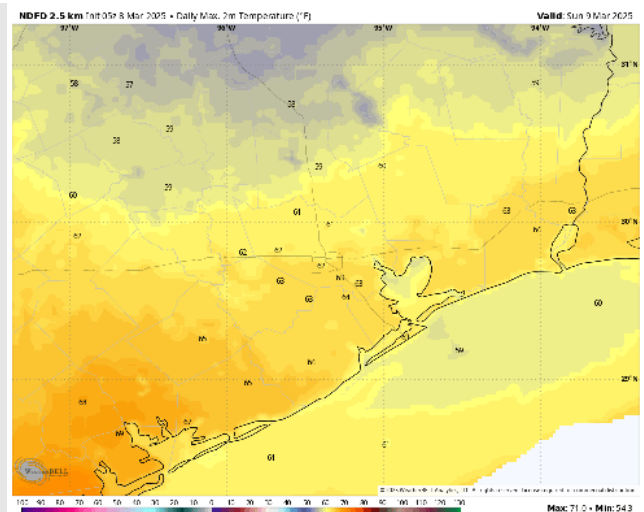
High Temps: **N of Morgan's Point:** Lower 60s F. **S of Morgan's Point:** Upper 50s F.

Visibility: Lingering fog from Saturday's event will be clearing out right around midnight before the front passes. Otherwise not seeing a threat..

Precip Image: 11 AM CDT



Wind Speed:
6 PM CDT



High Temps
Sunday

Houston Pilots: MON. 3/10/2025



Forecast Discussion

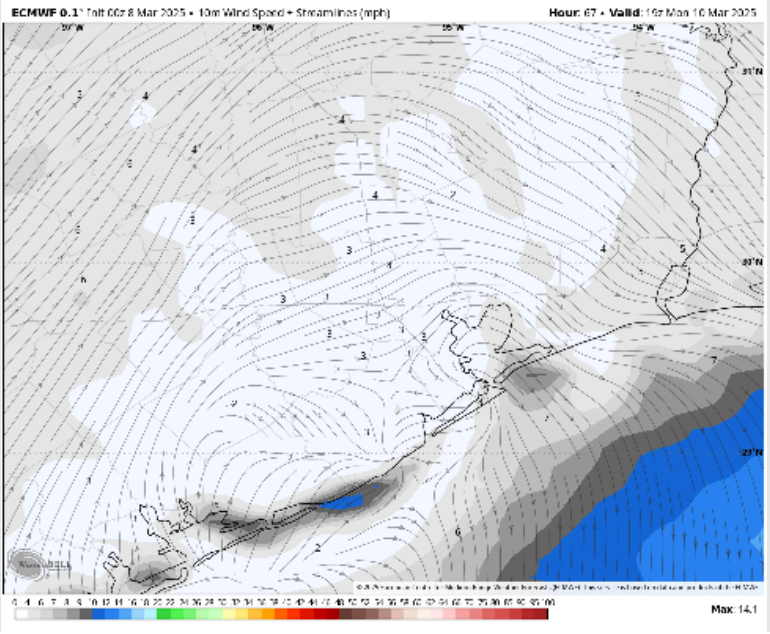
Precip: Favoring dry conditions for Monday.

Wind: Winds will remain out of the NNW / N through 12PM before becoming variable for the remainder Monday. **N of Morgan's Point:** Winds will be at 7 - 10kts through 7AM before becoming 3- 5 kts for the rest of Monday. **S of Morgan's Point:** Winds will be at 5 - 10 kts through 10AM before becoming 4 - 7 kts for the rest of Monday. **Gusts of 20 - 25 kts will be possible for all stations through 5AM.**

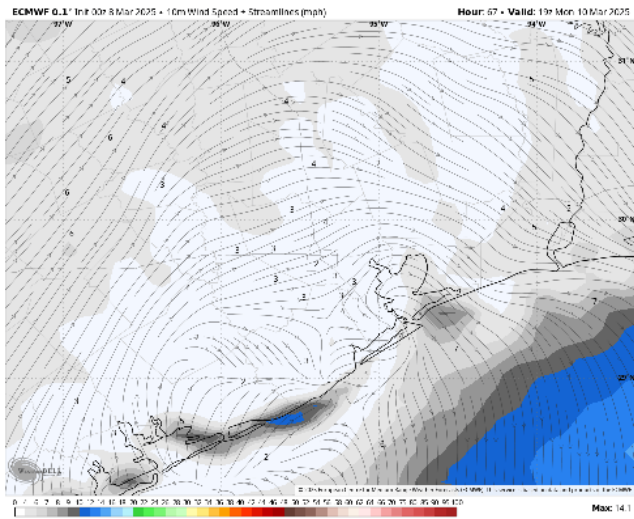
High Temps: **N of Morgan's Point:** Upper 60s F. **S of Morgan's Point:** Low 60s F.

Visibility: No fog favored for Monday.

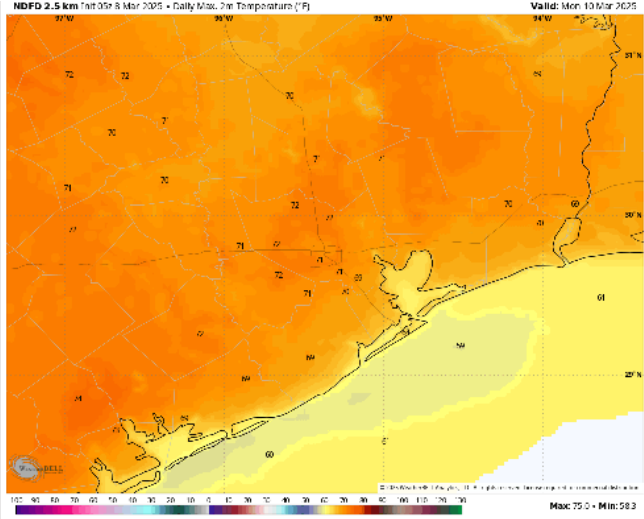
Precip Image: 2 PM CDT



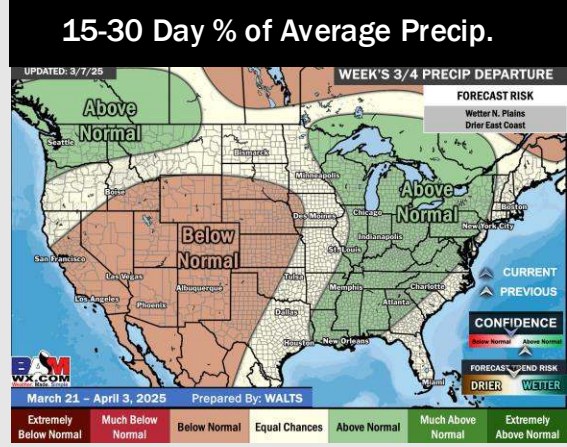
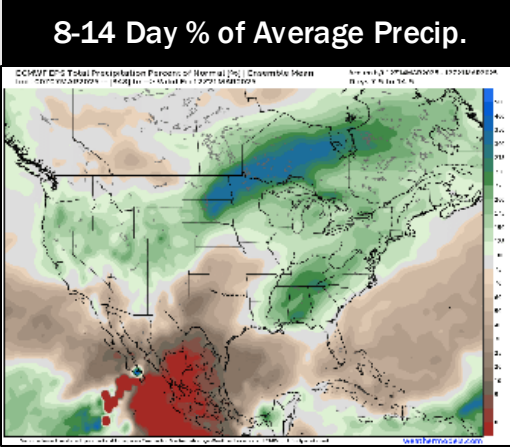
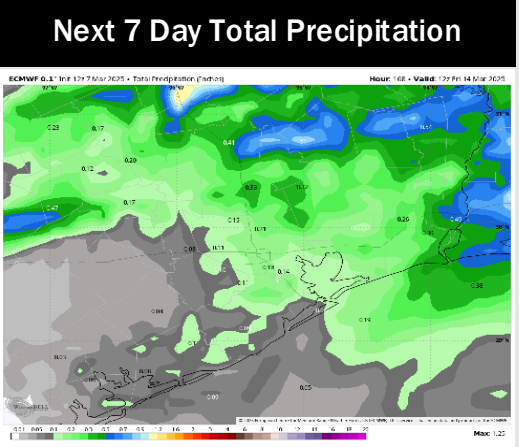
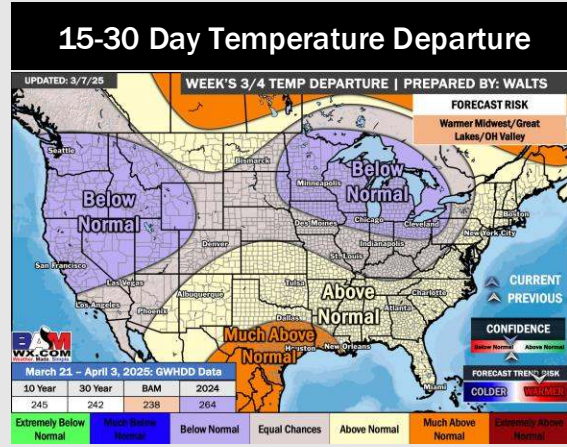
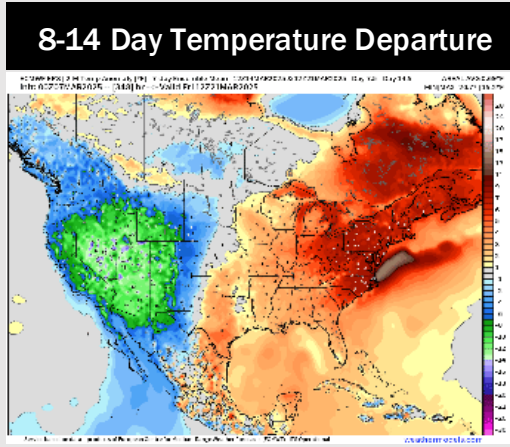
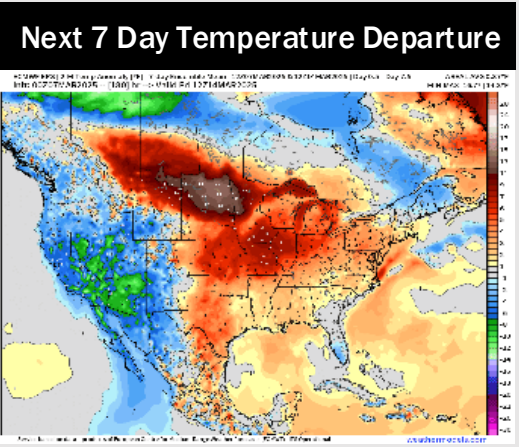
Wind Speed
2 PM CDT



High Temps
Monday



Houston Pilots: 3/8/25



- Temps are expected to be near normal for the next 7 days. Scattered rain chances are favored by the weekend and early next week.
- Above normal temps and well below normal rainfall are expected for week 2.
- Much above normal temperatures and below normal precipitation chances are expected for the weeks 3/4 timeframe.