

Houston Pilots Forecast Package



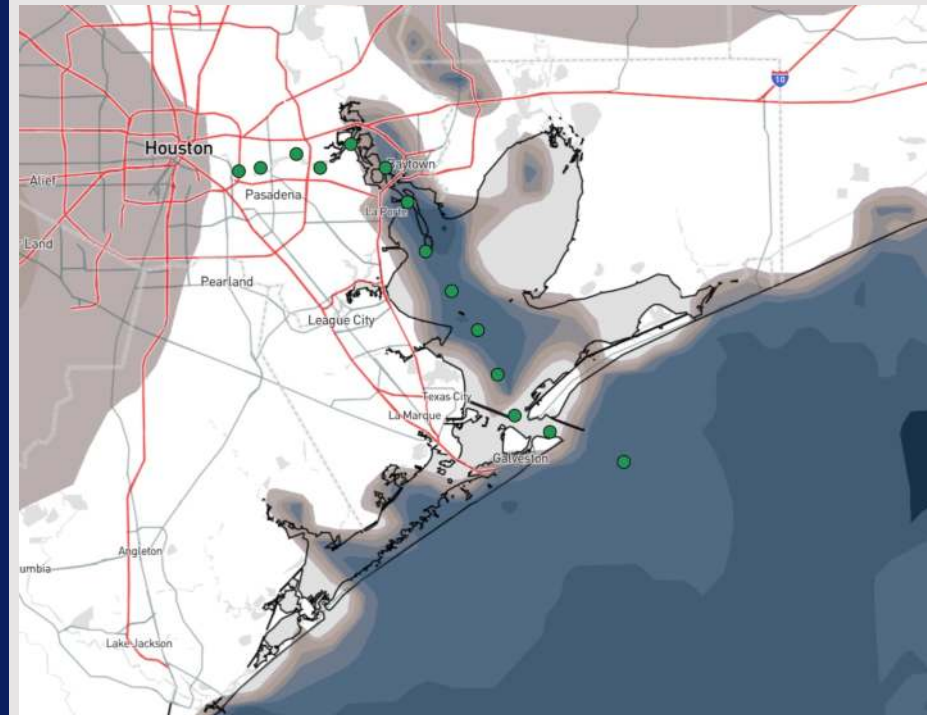
Updated: 12:45 AM CT

Saturday, March 8, 2025

Forecaster: John Kemper

Weather Headlines

- **Gusty winds of at least 20 - 25 kts are favored at times for all Stations for the next 48 hours.**
- **Scattered showers and a few storms return to the forecast today.**
- **Sea fog risks in play for both AM and PM today. See visibility slides for more info on this risk.**



Current Radar: 12:40 AM CT

As always, please do not hesitate to reach out to us with any forecast questions at **(317)-560-8122**. Press **1** for forecast questions.

You can also access real-time forecast updates and 24/7 meteorological chat assistance on your [Clarity](#) app. Click [here](#) for login assistance.

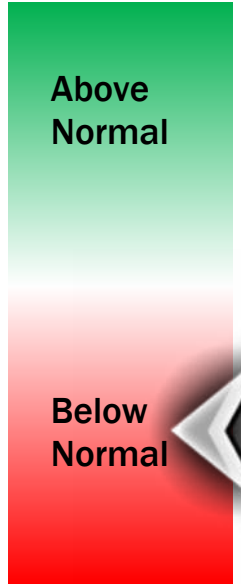
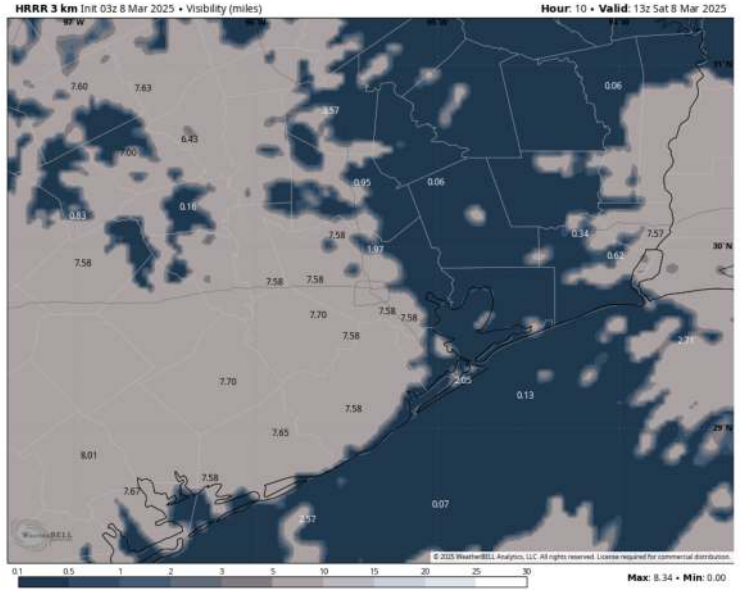
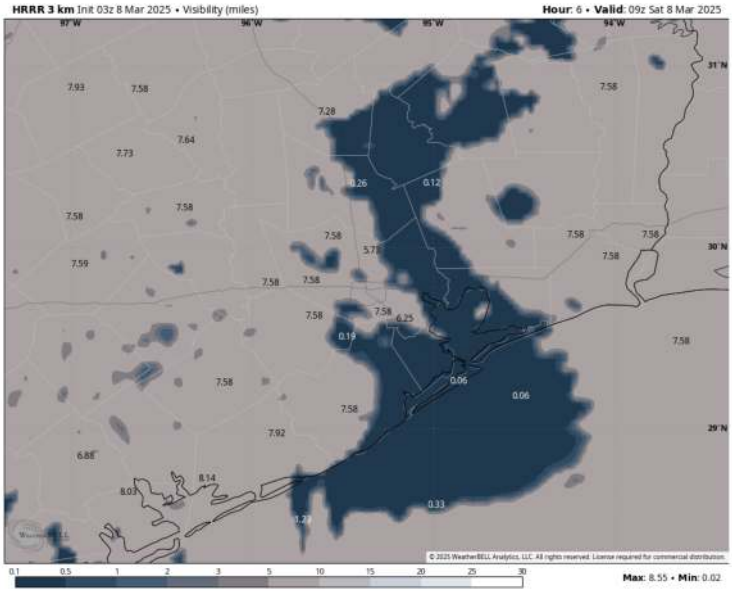


Houston Pilots Visibility Report



3 AM CST SAT VISIBILITY 7 AM CST SAT VISIBILITY

Confidence



Stations S. of Morgan's Point: Fog is struggling to form inside the bay yet is gradually increasing to the east and west of Houston. Potential is expected to increase through 3AM, although confidence is lower on exact timing. Once patchy sea fog begins to form towards the boarding station and 11/12, it will quickly expand to include the entire bay. Visibilities of less than 1 mile will be possible.

Stations N. of Morgan's Point: Patchy sea fog will be possible N of Morgan's Point through 8AM, with visibilities of less than 2 miles expected. There will be infrequent periods of improved visibility (3mi+).

A few scattered showers working across the area throughout the morning after 4AM may aid in keeping this risk patchier in nature.

By 9 AM, anticipating fog to clear out for all stations N of Station 11/12. The Boarding Station and Station 11/12 is at risk for fog lingering through the early afternoon and evening. See additional details in next slide!

TIMEFRAME DISCUSSED	THREAT
CURRENT - 2 PM SAT	Medium

Houston Pilots Visibility Report

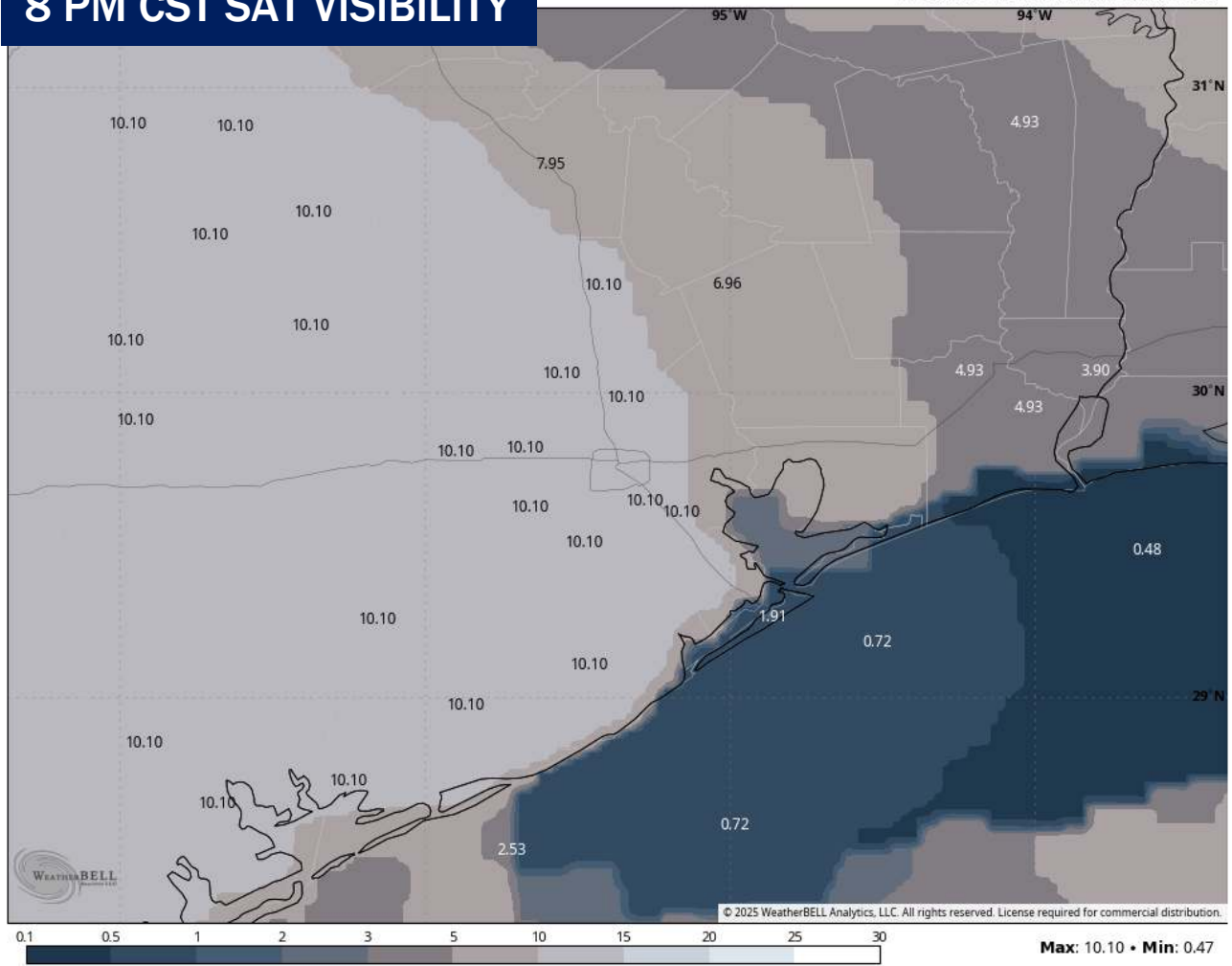


TIMEFRAME DISCUSSED	THREAT
2PM CST SAT - 12AM CST SUN	Low-Medium

Forecast Confidence

Above Normal Below Normal

8 PM CST SAT VISIBILITY



Patchy sea fog will likely continue to be a threat for stations 11/12 and the Boarding Station through the afternoon into the evening hours. Confidence is lower on the exact end time due to the arrival of a front that will shift winds quickly out of the NW. Visibilities of less than 1 mile at times will be possible.

One risk to the forecast that we will be watching is a very patchy fog threat for stations N of 11/12 and S of Morgan's Point from 7PM - 11PM, although at this time visibilities are favored to struggle to get below 1 mile.

Houston Pilots Extended Range Visibility Report



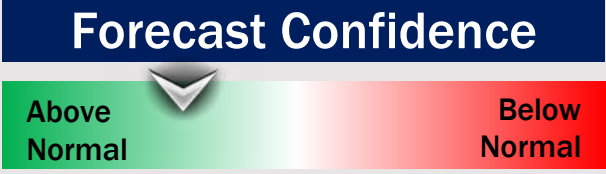
Tuesday 3/11/25

No fog concerns for Tuesday.



Wednesday 3/12/25

No fog concerns for Wednesday.



Thursday 3/13/25

No fog concerns for Thursday.



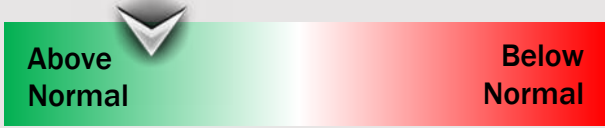
Chance for Fog

Tuesday AM	Unlikely
Tuesday PM	Unlikely
Wednesday AM	Unlikely
Wednesday PM	Unlikely
Thursday AM	Unlikely
Thursday PM	Unlikely

Houston Pilots Visibility Chart (miles)



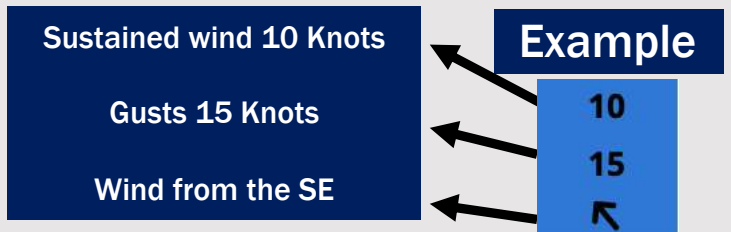
Forecast Confidence



Visibility	Sat 1 am	Sat 2 am	Sat 3 am	Sat 4 am	Sat 5 am	Sat 6 am	Sat 7 am	Sat 8 am	Sat 9 am	Sat 10 am	Sat 11 am	Sat 12 pm	Sat 1 pm	Sat 2 pm	Sat 3 pm	Sat 4 pm	Sat 5 pm	Sat 6 pm	Sat 7 pm	Sat 8 pm	Sat 9 pm	Sat 10 pm	Sat 11 pm	Sun 12 am
Houston Pilots N - 610 Bridge	4.9	2.9	2	1.1	2.5	4.9	4.9	3.9	2.9	4.9	5.9	6.9	6.9	7.9	10	10	10	9	9	9	9	9	9	10
Houston Pilots M - Kinder 1	3.9	2.9	2	1.1	1.1	4.9	4.9	3.9	2.9	3.9	3.9	6.9	6.9	7.9	10	10	10	9	9	9	9	7.9	9	9
Houston Pilots L - Greens Bayou	0.8	1.1	0.8	0.5	0.3	1.6	4.9	1.6	1.1	2.9	3.9	5.9	6.9	7.9	10	10	10	9	9	9	7.9	7.9	7.9	9
Houston Pilots K - Shell Crude	0.8	1.1	0.8	0.5	0.3	1.1	3.9	1.6	1.1	1.6	3.9	5.9	6.9	7.9	9	10	10	9	9	9	7.9	7.9	7.9	9
Houston Pilots J - Lynchburg Ferries	0.8	0.5	0.3	0.3	0.3	0.3	0.8	1.1	0.3	1.6	2	5.9	6.9	7.9	9	10	10	9	9	9	7.9	7.9	7.9	9
Houston Pilots I - Exxon 3	0.5	0.5	0.3	0.3	0.3	0.3	0.3	0.3	0.3	0.5	1.1	5.9	2.5	6.9	7.9	7.9	7.9	6.9	6.9	6.9	6.9	6.9	6.9	6.9
Houston Pilots H - Morgans Point	0.5	0.5	0.3	0.3	0.3	0.3	0.3	0.3	0.3	0.5	1.1	2	1.6	1.6	2.5	3.9	4.9	4.9	4.9	4.9	4.9	4.9	4.9	5.9
Houston Pilots G - 75/76	1.1	0.5	0.3	0.3	0.3	0.3	0.3	0.3	0.3	0.5	1.1	2	1.6	1.6	2	2.9	3.9	3.9	3.9	4.9	3.9	3.9	3.9	9
Houston Pilots F - 63/64	1.1	0.5	0.3	0.3	0.3	0.3	0.3	0.3	0.3	0.5	1.1	2	1.6	1.6	1.6	2.9	3.9	3.9	3.9	4.9	3.9	3.9	3.9	9
Houston Pilots E - 51/52	2.9	1.1	0.3	0.3	0.3	0.3	0.3	0.3	0.3	0.5	2	2	1.1	1.6	1.6	2.9	3.9	3.9	3.9	4.9	3.9	3.9	3.9	9
Houston Pilots D - 37/38	2.5	1.1	0.3	0.3	0.3	0.3	0.3	0.3	0.3	0.5	2	1.6	1.1	1.6	1.6	2.9	3.9	3.9	3.9	4.9	3.9	3.9	3.9	9
Houston Pilots C - 25/26	2.9	1.1	0.3	0.3	0.3	0.3	0.3	0.3	0.3	0.5	2	0.8	1.1	1.6	1.6	2.9	3.9	3.9	3.9	4.9	3.9	3.9	3.9	9
Houston Pilots B - 11/12	2.5	0.5	0.3	0.3	0.3	0.3	0.3	0.3	0.3	0.5	2	0.8	1.1	1.1	1.6	2.9	3.9	3.9	3.9	3.9	3.9	3.9	3.9	9
Houston Pilots A - 1 & 2 Bravo	2	0.5	0.3	0.3	0.3	0.3	0.3	0.3	0.3	0.5	0.5	0.5	1.1	0.8	1.1	2.9	3.9	3.9	3.9	3.9	3.9	2.9	2.9	9

NOTE: This is automated data that may/may not agree with the official BAM thinking that's found on the daily slides or special visibility report slides. This data should be used as a guide only

Houston Pilots Wind Chart



Wind	Sat 1 am	Sat 2 am	Sat 3 am	Sat 4 am	Sat 5 am	Sat 6 am	Sat 7 am	Sat 8 am	Sat 9 am	Sat 10 am	Sat 11 am	Sat 12 pm	Sat 1 pm	Sat 2 pm	Sat 3 pm	Sat 4 pm	Sat 5 pm	Sat 6 pm	Sat 7 pm	Sat 8 pm	Sat 9 pm	Sat 10 pm	Sat 11 pm	Sun 12 am
Houston Pilots N - 610 Bridge	6 12 ↖	5 10 ↖	5 9 ↖	3 8 ↖	3 8 ↖	3 7 ↖	3 7 ↖	3 8 ↖	5 9 ↖	6 10 ↖	6 13 ↖	7 15 ↖	8 16 ↖	8 16 ↖	8 16 ↖	8 16 ↖	8 15 ↖	8 15 ↖	7 15 ↖	8 15 ↖	8 17 ↖	10 20 ↖	12 22 ↖	13 24 ↖
Houston Pilots M - Kinder 1	6 12 ↖	5 10 ↖	5 9 ↖	3 8 ↖	3 8 ↖	3 7 ↖	3 7 ↖	3 8 ↖	5 9 ↖	6 10 ↖	6 13 ↖	7 15 ↖	8 16 ↖	8 16 ↖	8 16 ↖	8 16 ↖	8 15 ↖	8 15 ↖	7 15 ↖	8 15 ↖	8 16 ↖	10 20 ↖	12 22 ↖	13 24 ↖
Houston Pilots L - Greens Bayou	6 10 ↖	5 9 ↖	3 9 ↖	3 8 ↖	3 8 ↖	3 7 ↖	3 7 ↖	3 8 ↖	5 9 ↖	6 10 ↖	6 13 ↖	8 15 ↖	8 16 ↖	8 16 ↖	8 16 ↖	8 16 ↖	8 15 ↖	8 14 ↖	7 14 ↖	7 15 ↖	8 16 ↖	9 18 ↖	10 21 ↖	12 23 ↖
Houston Pilots K - Shell Crude	6 10 ↖	5 9 ↖	3 9 ↖	3 8 ↖	3 7 ↖	3 7 ↖	3 7 ↖	3 8 ↖	5 9 ↖	6 10 ↖	6 13 ↖	8 15 ↖	8 16 ↖	8 16 ↖	8 16 ↖	8 16 ↖	8 15 ↖	8 14 ↖	7 14 ↖	7 15 ↖	8 15 ↖	9 18 ↖	10 21 ↖	12 23 ↖
Houston Pilots J - Lynchburg Ferries	5 10 ↖	5 9 ↖	3 8 ↖	3 8 ↖	3 7 ↖	3 7 ↖	3 7 ↖	3 8 ↖	5 8 ↖	6 10 ↖	6 13 ↖	8 15 ↖	8 16 ↖	8 16 ↖	8 16 ↖	8 16 ↖	8 15 ↖	8 14 ↖	7 14 ↖	7 14 ↖	8 15 ↖	8 17 ↖	10 20 ↖	12 23 ↖
Houston Pilots I - Exxon 3	7 12 ↖	6 10 ↖	6 9 ↖	6 8 ↖	6 8 ↖	6 8 ↖	6 8 ↖	6 8 ↖	6 9 ↖	7 10 ↖	8 13 ↖	8 15 ↖	9 16 ↖	9 16 ↖	9 17 ↖	9 17 ↖	9 16 ↖	9 15 ↖	9 15 ↖	9 15 ↖	10 17 ↖	12 20 ↖	14 23 ↖	15 23 ↖
Houston Pilots H - Morgans Point	7 10 ↖	6 10 ↖	6 9 ↖	6 8 ↖	5 8 ↖	5 8 ↖	5 8 ↖	6 8 ↖	6 9 ↖	6 10 ↖	7 13 ↖	8 14 ↖	9 16 ↖	9 16 ↖	9 16 ↖	9 16 ↖	9 15 ↖	9 14 ↖	8 14 ↖	9 14 ↖	9 15 ↖	10 16 ↖	13 20 ↖	15 22 ↖
Houston Pilots G - 75/76	8 12 ↖	8 10 ↖	7 10 ↖	6 9 ↖	6 9 ↖	6 8 ↖	6 9 ↖	6 9 ↖	7 10 ↖	7 12 ↖	8 13 ↖	9 15 ↖	10 17 ↖	9 17 ↖	10 17 ↖	10 17 ↖	10 15 ↖	10 15 ↖	10 15 ↖	10 15 ↖	10 17 ↖	12 21 ↖	15 24 ↖	17 24 ↖
Houston Pilots F - 63/64	8 12 ↖	8 12 ↖	7 10 ↖	6 9 ↖	6 9 ↖	6 8 ↖	6 9 ↖	6 9 ↖	7 10 ↖	8 12 ↖	8 13 ↖	9 15 ↖	10 17 ↖	9 16 ↖	9 17 ↖	10 17 ↖	10 16 ↖	10 15 ↖	9 15 ↖	10 15 ↖	10 17 ↖	12 20 ↖	14 24 ↖	17 24 ↖
Houston Pilots E - 51/52	8 13 ↖	8 12 ↖	7 10 ↖	6 9 ↖	6 8 ↖	6 8 ↖	6 9 ↖	6 9 ↖	7 10 ↖	7 13 ↖	8 13 ↖	8 15 ↖	9 16 ↖	9 16 ↖	9 16 ↖	9 16 ↖	9 15 ↖	9 14 ↖	9 14 ↖	9 14 ↖	10 15 ↖	12 20 ↖	14 23 ↖	16 23 ↖
Houston Pilots D - 37/38	8 13 ↖	8 10 ↖	7 10 ↖	6 9 ↖	6 8 ↖	6 8 ↖	6 8 ↖	6 9 ↖	7 10 ↖	7 13 ↖	8 13 ↖	8 15 ↖	9 16 ↖	9 16 ↖	9 16 ↖	9 15 ↖	9 14 ↖	9 14 ↖	9 14 ↖	9 14 ↖	10 15 ↖	12 20 ↖	14 24 ↖	16 24 ↖
Houston Pilots C - 25/26	8 13 ↖	8 12 ↖	7 10 ↖	6 9 ↖	6 8 ↖	6 8 ↖	6 8 ↖	6 9 ↖	7 10 ↖	7 13 ↖	8 13 ↖	8 14 ↖	9 16 ↖	9 15 ↖	9 15 ↖	9 15 ↖	8 14 ↖	8 14 ↖	8 13 ↖	8 13 ↖	8 14 ↖	10 16 ↖	13 24 ↖	16 24 ↖
Houston Pilots B - 11/12	8 12 ↖	7 10 ↖	6 10 ↖	6 9 ↖	6 8 ↖	6 8 ↖	6 8 ↖	6 9 ↖	7 10 ↖	7 13 ↖	8 13 ↖	8 14 ↖	9 15 ↖	8 14 ↖	8 14 ↖	8 14 ↖	8 14 ↖	8 13 ↖	8 13 ↖	8 13 ↖	8 14 ↖	10 15 ↖	13 20 ↖	15 23 ↖
Houston Pilots A - 1 & 2 Bravo	9 14 ↖	8 13 ↖	8 12 ↖	7 10 ↖	7 9 ↖	6 9 ↖	6 9 ↖	7 10 ↖	7 10 ↖	8 12 ↖	8 13 ↖	8 14 ↖	9 15 ↖	8 14 ↖	8 14 ↖	8 14 ↖	8 14 ↖	8 14 ↖	8 14 ↖	8 14 ↖	9 15 ↖	10 16 ↖	14 20 ↖	17 24 ↖

NOTE: This is automated data that may/may not agree with the official BAM thinking that's found on the daily slides. This data should be used as a guide only.

Houston Pilots: SAT. 3/8/2025



Forecast Discussion

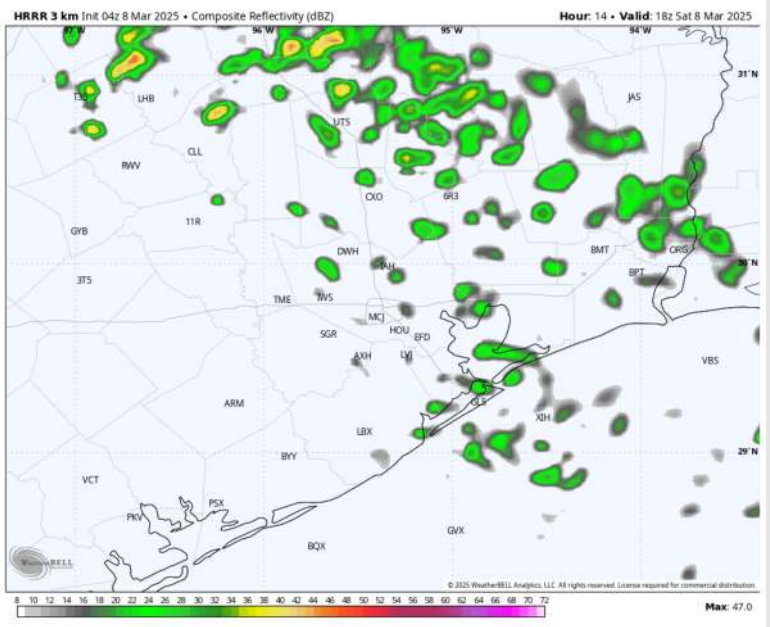
Precip: Scattered light showers in play for all Stations 3 km after 4 AM (20%). Favoring more dry time than not through 1PM. From 1PM – 7PM, a few scattered thunderstorms will be possible (30%).

Wind: Winds will be out of the SE through 6 AM, before shifting out of the E/SE. Winds will then quickly shift to be out of the NW after 9PM. **N of Morgan's Point:** Winds will be at 2 – 7 kts through 9 PM, increasing to 10–15 kts after that time. **S of Morgan's Point:** Winds will be at 3 – 8 kts through 10 PM, increasing to 20–25 kts after that time. **A few wind gusts of up to 25 kts will be possible for all stations N of Morgan's Point after ~9PM.**

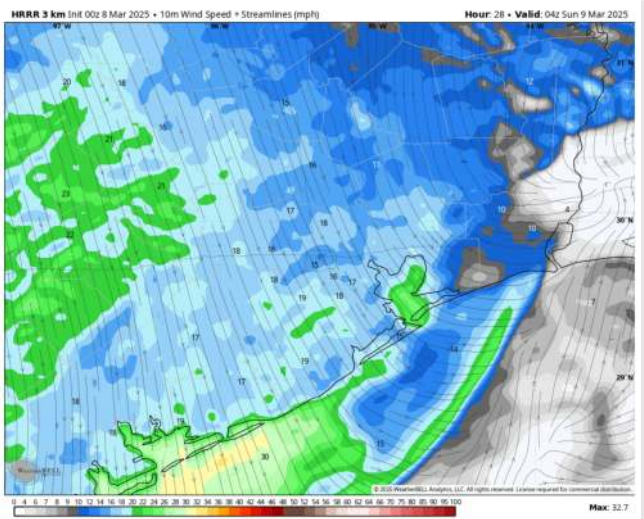
High Temps: **N of Morgan's Point:** Upper 70s / Near 80 F. **S of Morgan's Point:** Low 70s F.

Visibility: Watching for sea-fog risks this AM to impact all Stations. An additional, patchier threat will exist for the PM hours. Confidence on this threat is just below normal.

Precip Image: 12 PM CT

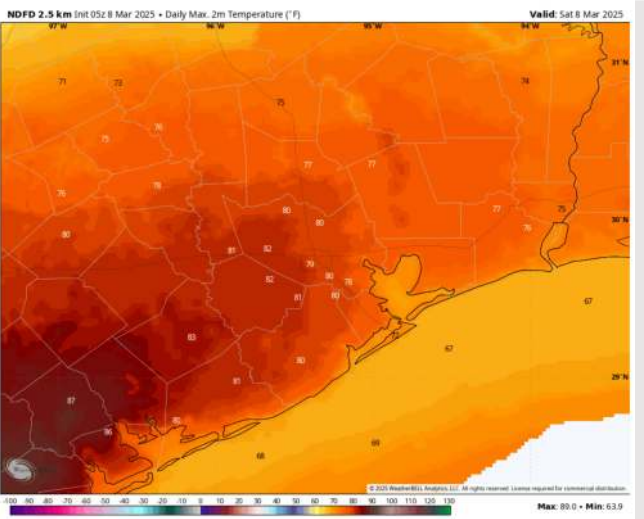


Wind Speed: 10 PM CT



Wind Speed:
10 PM CT

High Temps Saturday



High Temps
Saturday

Houston Pilots: SUN. 3/9/2025



Forecast Discussion

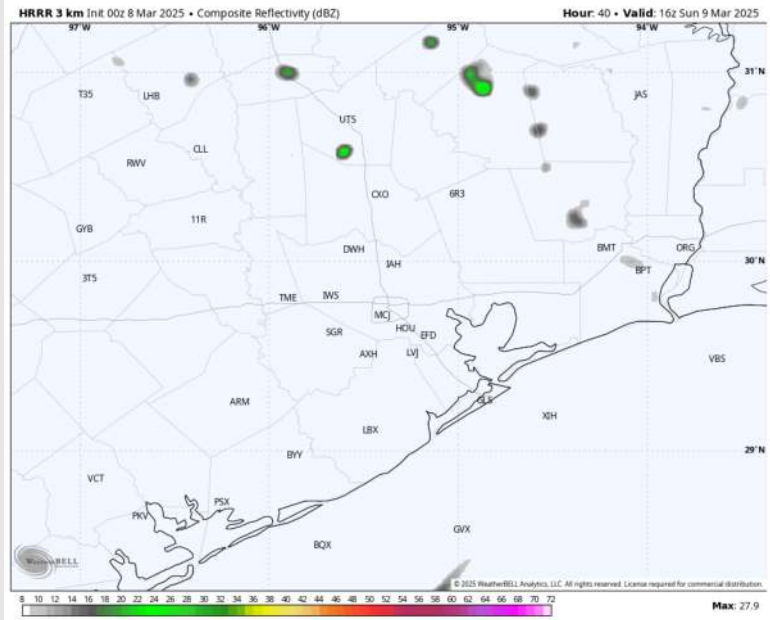
Precip: Favoring a few isolated showers to be possible (20%) from 5AM – 12PM before dry conditions will be favored the rest of the day.

Wind: Winds will be out of the NW for the entire day. **N of Morgan's Point:** Winds will be at 6 - 10 kts for all of Sunday. **S of Morgan's Point:** Winds will be at 9 – 14 kts for all of Sunday, with winds of 14 – 19 kts for the Boarding Station and 11/12 for the entire day. **Gusts of up to 25 kts will be possible for all stations through 8PM.**

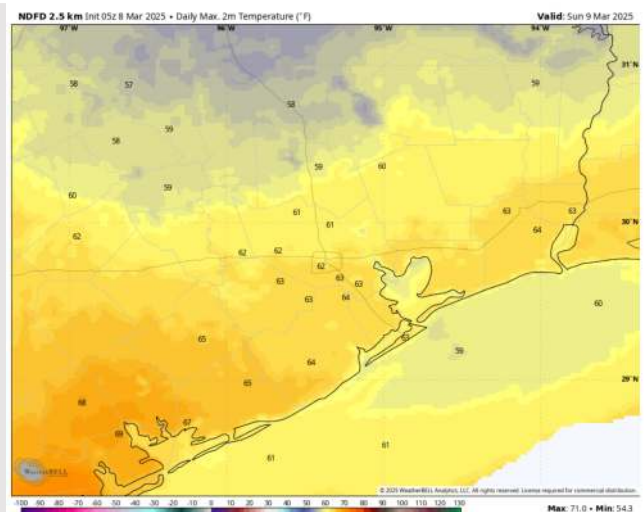
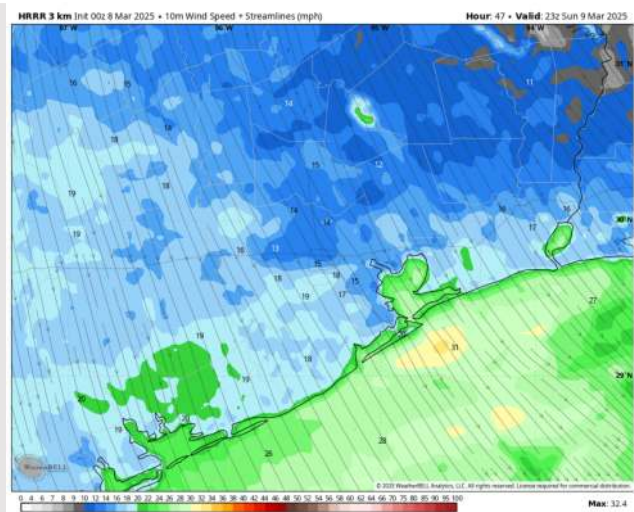
High Temps: **N of Morgan's Point:** Lower 60s F. **S of Morgan's Point:** Upper 50s F.

Visibility: No fog concerns for Sunday due to passage of front.

Precip Image: 11 AM CDT



Wind Speed:
6 PM CDT



High Temps
Sunday

Houston Pilots: MON. 3/10/2025



Forecast Discussion

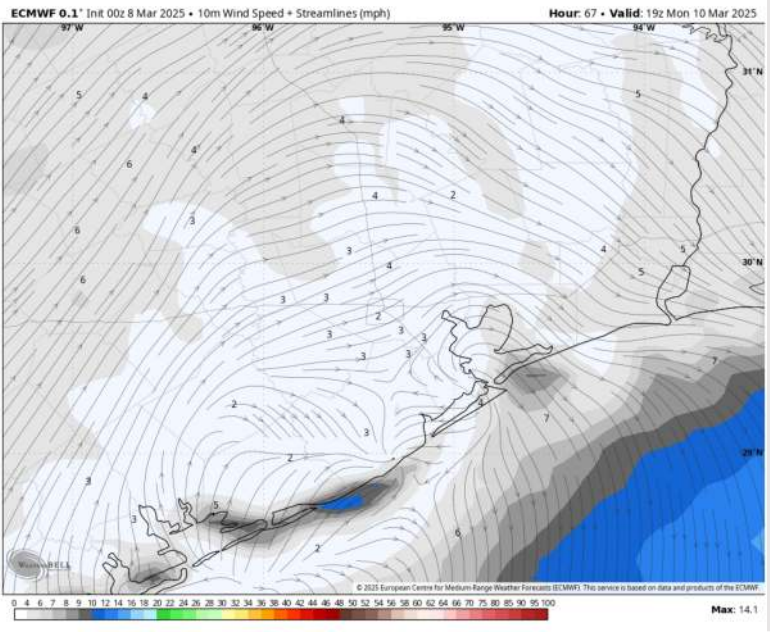
Precip: Favoring dry conditions for Monday.

Wind: Winds will remain out of the NNW / N through 12PM before becoming variable for the remainder Monday. **N of Morgan's Point:** Winds will be at 7 - 10kts through 7AM before becoming 3- 5 kts for the rest of Monday. **S of Morgan's Point:** Winds will be at 5 - 10 kts through 10AM before becoming 4 - 7 kts for the rest of Monday. **Gusts of 20 - 25 kts will be possible for all stations through 5AM.**

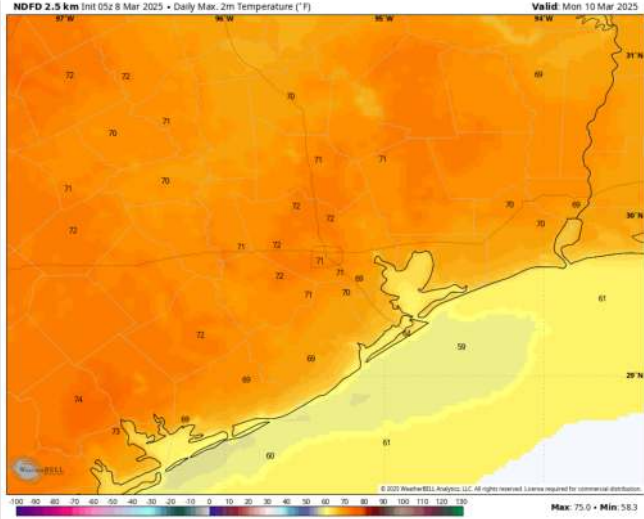
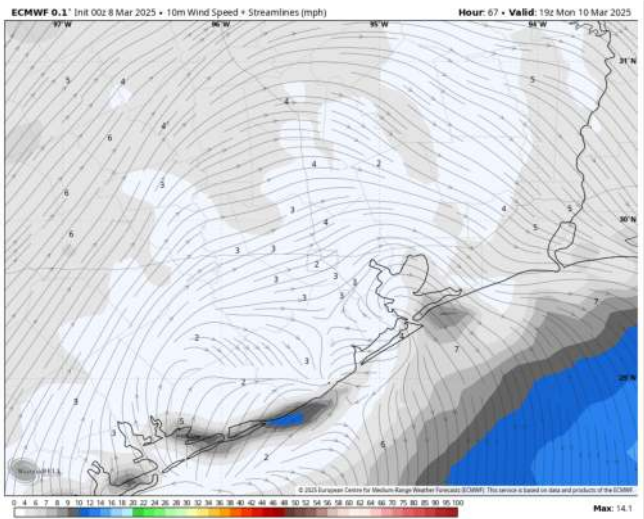
High Temps: **N of Morgan's Point:** Upper 60s F. **S of Morgan's Point:** Low 60s F.

Visibility: No fog favored for Monday.

Precip Image: 2 PM CDT



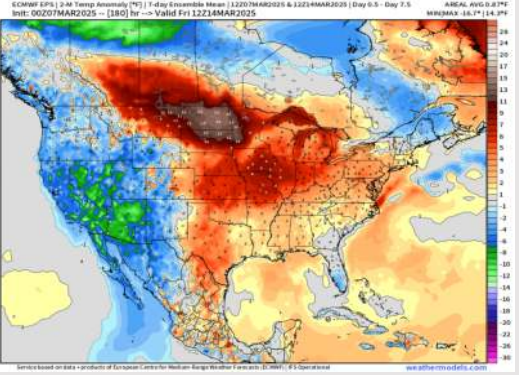
Wind Speed
2 PM CDT



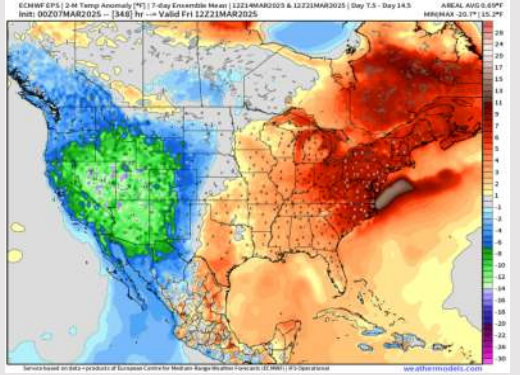
High Temps
Monday

Houston Pilots: 3/8/25

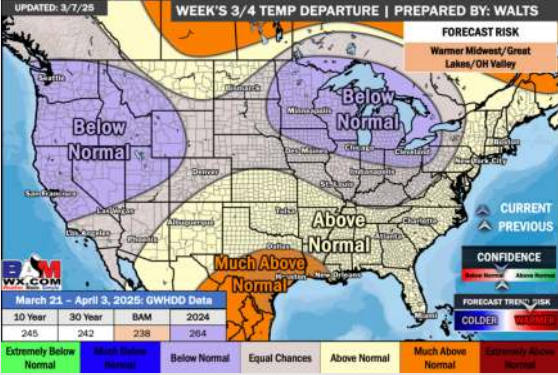
Next 7 Day Temperature Departure



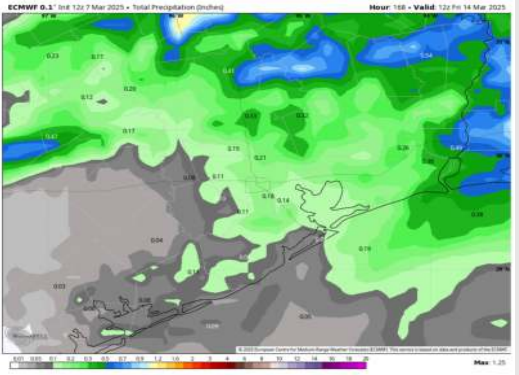
8-14 Day Temperature Departure



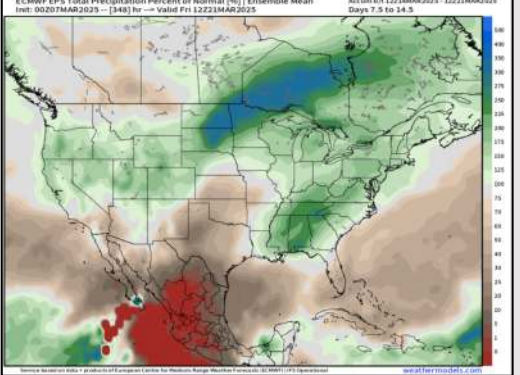
15-30 Day Temperature Departure



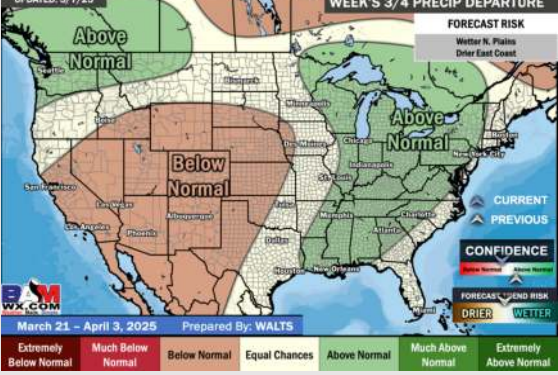
Next 7 Day Total Precipitation



8-14 Day % of Average Precip.



15-30 Day % of Average Precip.



- Temps are expected to be near normal for the next 7 days. Scattered rain chances are favored by the weekend and early next week.
- Above normal temps and well below normal rainfall are expected for week 2.
- Much above normal temperatures and below normal precipitation chances are expected for the weeks 3/4 timeframe.