

# Houston Pilots Forecast Package



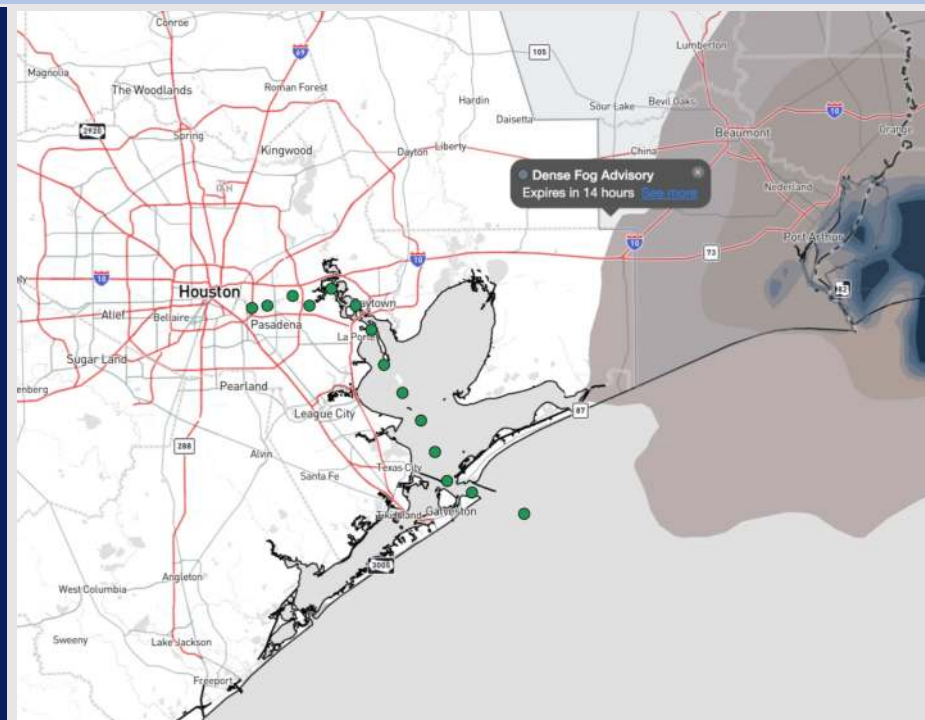
Updated: 8:20 PM CT

Tuesday, February 25, 2025

Forecaster: John Kemper

## Weather Headlines

- **SEE UPDATED VISIBILITY GRAPHIC for latest thoughts on fog risk, which remains low confidence at this time!**
- Favoring dry conditions over the next 72 hours and throughout much of the week.
- Winds are anticipated to be light over the next 48 hours.



Current Radar: 8:17 PM CT

As always, please do not hesitate to reach out to us with any forecast questions at **(317)-560-8122**. Press 1 for forecast questions.

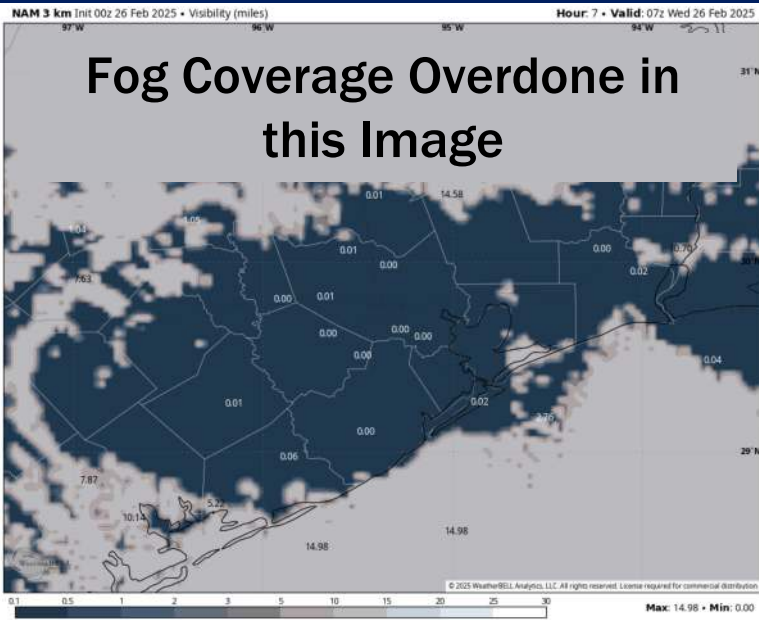
You can also access real-time forecast updates and 24/7 meteorological chat assistance on your [Clarity](#) app. Click [here](#) for login assistance.



# Houston Pilots Visibility Report

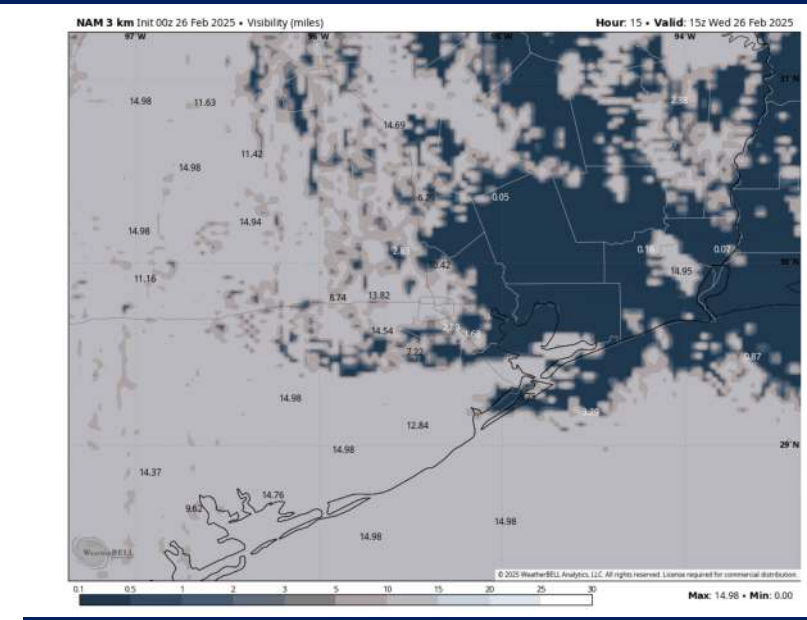


## 1 AM CST WED VISIBILITY

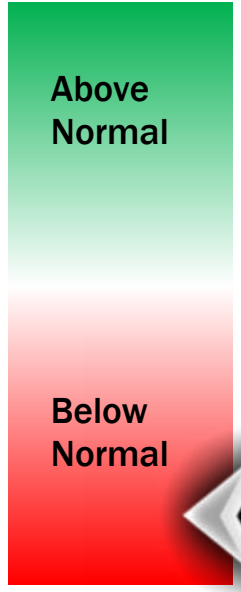


**Fog Coverage Overdone in this Image**

## 9 AM CST WED VISIBILITY



## Confidence



Confidence continues to remain below normal in terms of timing and coverage for fog for all stations. At this time, we are favoring fog to be PATCHIER in nature than previously expected. Visibilities of less than 2 miles will be possible, with only a localized risk for <0.5 mi.

TIMEFRAME DISCUSSED	THREAT
CURRENT - 11 AM WED	Low-Medium

**Stations N. of Morgan's Point:** Fog will likely not begin to impact these stations until closer to midnight. Coverage is expected to remain patchy through ~9AM, before fog fully ends by 11AM.

**Stations S. of Morgan's Point:** Confidence is lowest for these stations currently. Areas of patchy fog will be possible for the Boarding Station / 11/12 from 9PM - 12AM, while patchy fog from 25/26 - Morgans Point will likely not begin to occur until closer to ~11PM - 12AM. For all stations S of Morgan's Point, fog will likely end by ~9AM.

# Houston Pilots Extended Range Visibility Report



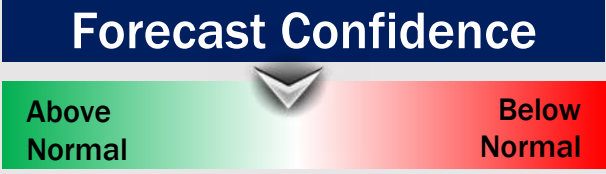
## Friday 2/28/25

Not favoring fog risks for Friday at this time.



## Saturday 3/1/25

Watching for patchy sea fog risks SAT AM for Stations S of Morgan's Point.



## Sunday 3/2/25

Watching for patchy sea fog risks SUN AM for Stations S. of Morgan's Point.



## Chance for Fog

Friday AM	Unlikely
Friday PM	Unlikely
Saturday AM	Low-End
Saturday PM	Unlikely
Sunday AM	Low-End
Sunday PM	Unlikely

# Houston Pilots Visibility Chart (miles)



## Forecast Confidence



Visibility	Tue 7 pm	Tue 8 pm	Tue 9 pm	Tue 10 pm	Tue 11 pm	Wed 12 am	Wed 1 am	Wed 2 am	Wed 3 am	Wed 4 am	Wed 5 am	Wed 6 am	Wed 7 am	Wed 8 am	Wed 9 am	Wed 10 am	Wed 11 am	Wed 12 pm	Wed 1 pm	Wed 2 pm	Wed 3 pm	Wed 4 pm	Wed 5 pm	Wed 6 pm
Houston Pilots N - 610 Bridge	10	10	10	10	9	6.9	4.9	3.9	2.9	2	1.6	1.6	2	2.9	4.9	10	10	10	10	10	10	10	10	10
Houston Pilots M - Kinder 1	10	10	10	10	9	6.9	4.9	3.9	2.5	1.1	1.1	1.1	2	2.9	4.9	10	10	10	10	10	10	10	10	10
Houston Pilots L - Greens Bayou	10	10	10	10	9	5.9	4.9	3.9	1.1	0.7	0.5	1.1	2	2.5	4.9	10	10	10	10	10	10	10	10	10
Houston Pilots K - Shell Crude	10	10	10	10	9	5.9	4.9	3.9	1.1	0.7	0.5	1.1	2	2.5	4.9	10	10	10	10	10	10	10	10	10
Houston Pilots J - Lynchburg Ferries	10	10	10	10	6.9	4.9	4.9	3.9	1.1	0.7	0.5	1.1	2	2.5	4.9	10	10	10	10	10	10	10	10	10
Houston Pilots I - Exxon 3	10	10	10	10	6.9	5.9	4.9	3.9	1.1	0.7	0.5	1.1	2	2.5	4.9	10	10	10	10	10	10	10	10	10
Houston Pilots H - Morgans Point	10	10	10	10	9	6.9	5.9	3.9	1.1	0.7	0.5	1.1	2	2.9	4.9	10	10	10	10	10	10	10	10	10
Houston Pilots G - 75/76	10	10	10	10	10	10	10	10	10	8	8	8	8	6.9	6.9	10	10	10	10	10	10	10	10	9
Houston Pilots F - 63/64	10	10	10	10	10	10	10	10	10	8	8	8	8	6.9	6.9	10	10	10	10	10	10	10	10	9
Houston Pilots E - 51/52	10	10	10	10	10	10	10	10	10	8	9	9	8	6.9	6.9	10	10	10	10	10	10	10	9	9
Houston Pilots D - 37/38	10	10	10	10	10	10	10	10	10	8	9	9	8	6.9	6.9	10	10	10	10	10	10	10	9	9
Houston Pilots C - 25/26	10	10	10	10	10	10	10	10	10	8	9	10	9	6.9	6.9	10	10	10	10	10	10	10	9	9
Houston Pilots B - 11/12	10	10	10	10	10	10	10	10	10	8	10	10	9	6.9	6.9	10	10	10	10	10	10	10	8	8
Houston Pilots A - 1 & 2 Bravo	10	10	10	10	10	10	10	10	9	10	10	10	10	9	9	10	10	10	10	10	10	10	8	8

**NOTE: This is automated data that may/may not agree with the official BAM thinking that's found on the daily slides or special visibility report slides. This data should be used as a guide only**

# Houston Pilots Wind Chart



**Sustained wind 10 Knots**  
**Gusts 15 Knots**  
**Wind from the SE**

**Example**

10  
15  
↙

Wind	Tue 3 pm	Tue 4 pm	Tue 5 pm	Tue 6 pm	Tue 7 pm	Tue 8 pm	Tue 9 pm	Tue 10 pm	Tue 11 pm	Wed 12 am	Wed 1 am	Wed 2 am	Wed 3 am	Wed 4 am	Wed 5 am	Wed 6 am	Wed 7 am	Wed 8 am	Wed 9 am	Wed 10 am	Wed 11 am	Wed 12 pm	Wed 1 pm	Wed 2 pm
Houston Pilots N - 610 Bridge	5 9 ↙	6 10 ↙	6 13 ↙	7 13 ↙	7 13 ↙	6 13 ↙	6 12 ↙	6 12 ↙	6 10 ↙	5 10 ↙	5 10 ↙	5 9 ↙	5 9 ↙	5 9 ↙	3 9 ↙	3 9 ↙	3 8 ↙	5 9 ↙	6 10 ↙	6 13 ↙	7 15 ↙	8 17 ↙	9 18 ↙	9 18 ↙
Houston Pilots M - Kinder 1	5 9 ↙	6 10 ↙	6 13 ↙	7 13 ↙	7 13 ↙	6 12 ↙	6 12 ↙	6 10 ↙	6 10 ↙	5 10 ↙	5 9 ↙	5 9 ↙	5 9 ↙	5 9 ↙	3 9 ↙	3 9 ↙	3 8 ↙	5 9 ↙	6 10 ↙	6 13 ↙	7 15 ↙	8 17 ↙	9 18 ↙	9 18 ↙
Houston Pilots L - Greens Bayou	5 9 ↙	6 12 ↙	6 13 ↙	7 13 ↙	7 13 ↙	6 12 ↙	6 12 ↙	6 10 ↙	6 10 ↙	5 10 ↙	5 9 ↙	5 9 ↙	5 9 ↙	5 9 ↙	5 9 ↙	3 9 ↙	3 8 ↙	5 9 ↙	6 10 ↙	6 13 ↙	7 15 ↙	8 17 ↙	9 18 ↙	10 18 ↙
Houston Pilots K - Shell Crude	6 9 ↙	6 12 ↙	7 13 ↙	7 13 ↙	7 13 ↙	6 12 ↙	6 10 ↙	6 10 ↙	6 10 ↙	5 9 ↙	5 9 ↙	5 9 ↙	5 9 ↙	5 9 ↙	5 9 ↙	3 9 ↙	5 9 ↙	5 9 ↙	6 10 ↙	6 13 ↙	7 15 ↙	8 17 ↙	9 18 ↙	10 18 ↙
Houston Pilots J - Lynchburg Ferries	6 9 ↙	6 10 ↙	6 13 ↙	6 13 ↙	6 13 ↙	6 12 ↙	6 10 ↙	6 10 ↙	5 9 ↙	5 9 ↙	5 9 ↙	3 9 ↙	3 9 ↙	3 9 ↙	3 9 ↙	3 8 ↙	3 8 ↙	5 9 ↙	6 10 ↙	6 13 ↙	8 15 ↙	8 17 ↙	9 18 ↙	10 18 ↙
Houston Pilots I - Exxon 3	6 9 ↙	7 12 ↙	8 13 ↙	8 13 ↙	9 14 ↙	8 13 ↙	8 12 ↙	8 12 ↙	7 12 ↙	7 10 ↙	7 10 ↙	7 10 ↙	6 10 ↙	6 10 ↙	6 10 ↙	6 9 ↙	6 9 ↙	7 10 ↙	7 12 ↙	8 13 ↙	8 15 ↙	10 17 ↙	10 18 ↙	10 18 ↙
Houston Pilots H - Morgans Point	6 9 ↙	7 12 ↙	8 13 ↙	8 13 ↙	8 13 ↙	8 12 ↙	8 10 ↙	8 10 ↙	7 10 ↙	7 10 ↙	7 10 ↙	6 10 ↙	6 10 ↙	6 10 ↙	6 10 ↙	6 9 ↙	6 9 ↙	7 10 ↙	7 12 ↙	8 13 ↙	8 15 ↙	9 17 ↙	10 18 ↙	10 18 ↙
Houston Pilots G - 75/76	6 10 ↙	7 13 ↙	8 13 ↙	8 13 ↙	9 14 ↙	9 13 ↙	8 13 ↙	8 12 ↙	8 12 ↙	8 12 ↙	8 12 ↙	8 12 ↙	8 12 ↙	8 12 ↙	8 12 ↙	8 12 ↙	8 12 ↙	8 12 ↙	8 13 ↙	8 14 ↙	9 16 ↙	10 17 ↙	10 18 ↙	10 18 ↙
Houston Pilots F - 63/64	6 9 ↙	7 12 ↙	8 13 ↙	8 13 ↙	9 14 ↙	8 13 ↙	8 12 ↙	8 12 ↙	8 12 ↙	8 12 ↙	8 12 ↙	8 12 ↙	8 12 ↙	8 12 ↙	8 12 ↙	8 12 ↙	8 12 ↙	8 13 ↙	8 13 ↙	8 14 ↙	9 15 ↙	10 17 ↙	10 18 ↙	10 18 ↙
Houston Pilots E - 51/52	6 9 ↙	7 12 ↙	7 13 ↙	8 13 ↙	8 13 ↙	8 12 ↙	8 12 ↙	8 12 ↙	8 12 ↙	8 12 ↙	8 12 ↙	8 12 ↙	8 12 ↙	8 12 ↙	8 12 ↙	8 12 ↙	8 12 ↙	8 12 ↙	8 13 ↙	8 14 ↙	9 15 ↙	9 16 ↙	10 17 ↙	10 17 ↙
Houston Pilots D - 37/38	6 9 ↙	6 12 ↙	7 12 ↙	8 12 ↙	8 12 ↙	8 12 ↙	8 12 ↙	8 12 ↙	8 12 ↙	8 12 ↙	8 12 ↙	8 12 ↙	8 12 ↙	8 12 ↙	8 12 ↙	8 12 ↙	8 12 ↙	8 12 ↙	8 13 ↙	8 14 ↙	9 15 ↙	9 16 ↙	9 16 ↙	9 16 ↙
Houston Pilots C - 25/26	6 9 ↙	6 10 ↙	7 12 ↙	7 12 ↙	8 12 ↙	8 10 ↙	8 12 ↙	8 12 ↙	8 12 ↙	8 12 ↙	8 12 ↙	8 12 ↙	8 12 ↙	8 12 ↙	8 12 ↙	8 12 ↙	8 12 ↙	8 12 ↙	8 13 ↙	8 14 ↙	8 15 ↙	8 15 ↙	9 15 ↙	9 15 ↙
Houston Pilots B - 11/12	6 9 ↙	6 9 ↙	6 10 ↙	7 10 ↙	7 10 ↙	7 10 ↙	7 10 ↙	7 10 ↙	7 10 ↙	7 12 ↙	7 12 ↙	7 12 ↙	7 12 ↙	7 12 ↙	7 12 ↙	7 12 ↙	7 12 ↙	8 12 ↙	8 12 ↙	8 13 ↙	8 13 ↙	8 14 ↙	8 14 ↙	8 15 ↙
Houston Pilots A - 1 & 2 Bravo	3 7 ↙	5 8 ↙	6 9 ↙	7 10 ↙	7 10 ↙	8 12 ↙	8 12 ↙	8 12 ↙	8 12 ↙	8 12 ↙	8 13 ↙	8 13 ↙	8 13 ↙	8 13 ↙	8 13 ↙	8 13 ↙	8 13 ↙	8 13 ↙	8 13 ↙	8 14 ↙	8 14 ↙	8 13 ↙	8 13 ↙	8 13 ↙

**NOTE: This is automated data that may/may not agree with the official BAM thinking that's found on the daily slides. This data should be used as a guide only.**

## Forecast Discussion

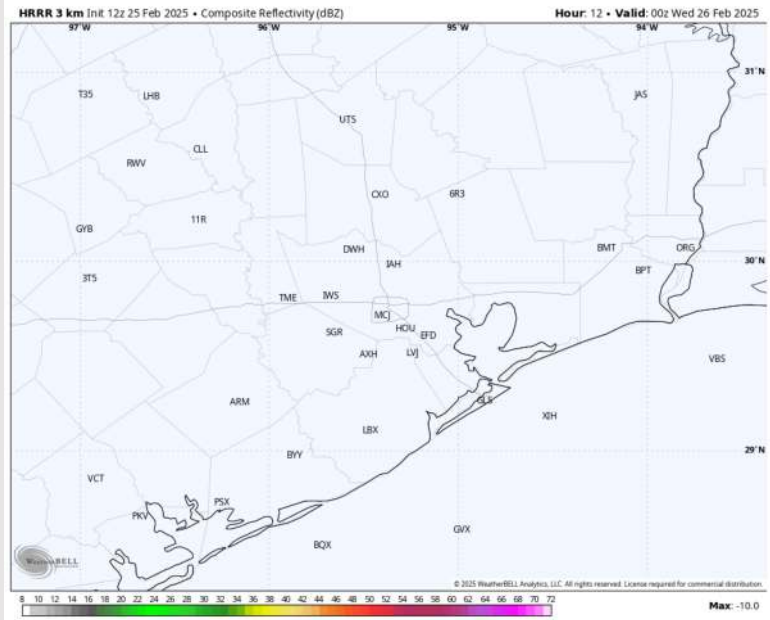
**Precip:** Favoring dry conditions for the rest of today.

**Wind:** Winds will be out of the SE through the rest of the day. **N of Morgan's Point:** Winds will be at 2 – 7 kts throughout the remainder of the day. **S of Morgan's Point:** Winds will be at 3 - 8 kts for the rest of the PM.

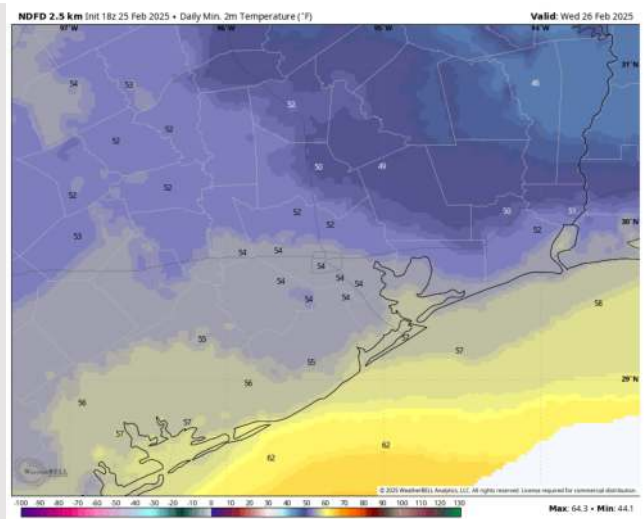
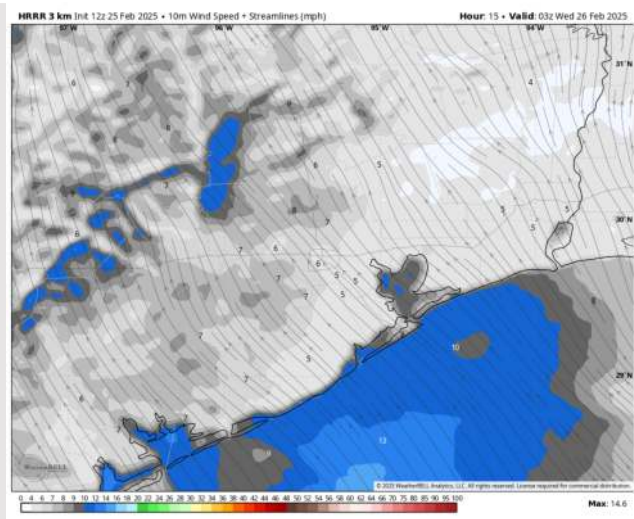
**Low Temps:** **N of Morgan's Point:** Mid 50s F. **S of Morgan's Point:** Mid to upper 50s F.

**Visibility:** Watching for fog risks to return ~6PM. See visibility slide for more details!

## Precip Image: 6 PM CT



Wind Speed:  
9 PM CT



Low Temps  
WED AM

# Houston Pilots: WED. 2/26/2025



## Forecast Discussion

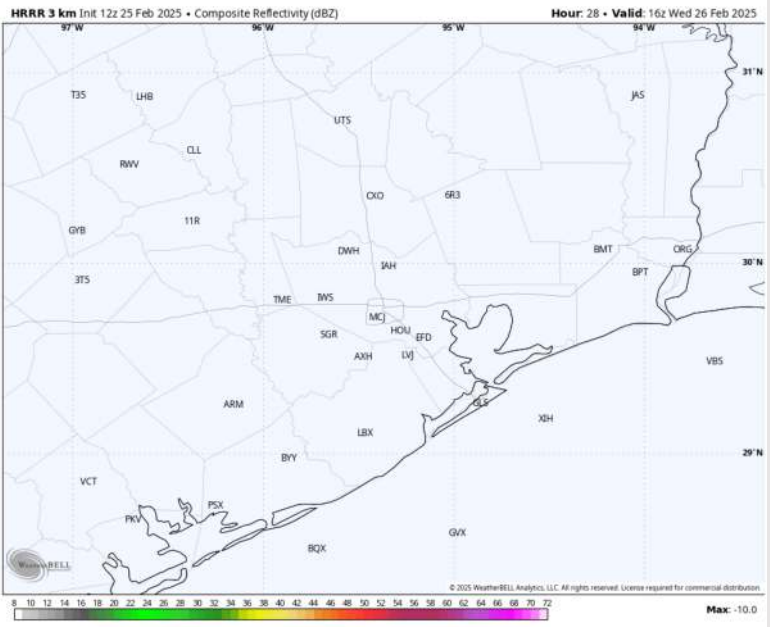
**Precip:** Favoring dry conditions for Wednesday.

**Wind:** Winds will be out of the SE throughout the day. **N of Morgan's Point:** Winds will be at 4 – 9 kts throughout Wednesday. **S of Morgan's Point:** Winds will be at 5 – 10 kts for the Wednesday. **Wind gusts up to 20 kts will be possible for Stations N. of Morgan's Point from 10AM to 5PM.**

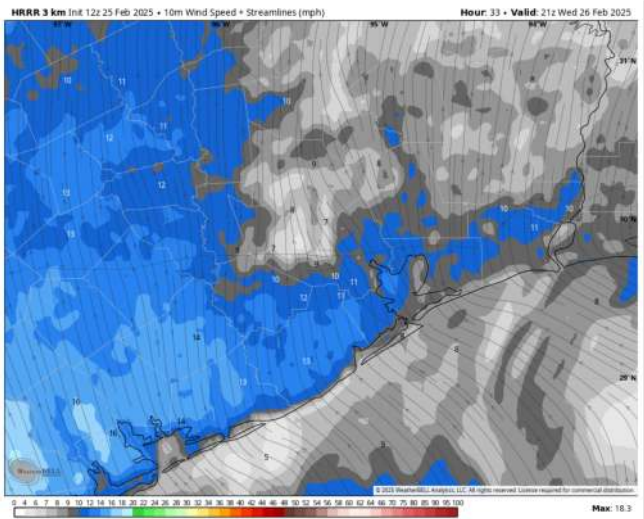
**High Temps:** **N of Morgan's Point:** Mid 70s F. **S of Morgan's Point:** Mid to upper 60s F.

**Visibility:** Watching for patchy sea fog risks to linger into WED AM. Confidence is low at this time on how dense fog will be and when it will lift.

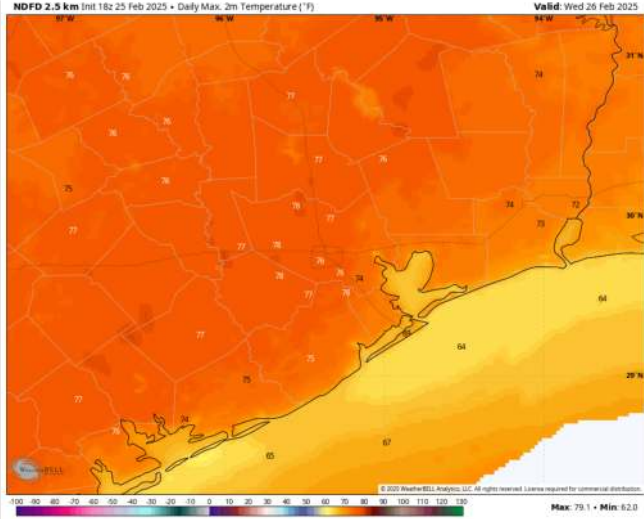
## Precip Image: 10 AM CT



## Wind Speed



Wind Speed  
3 PM CT

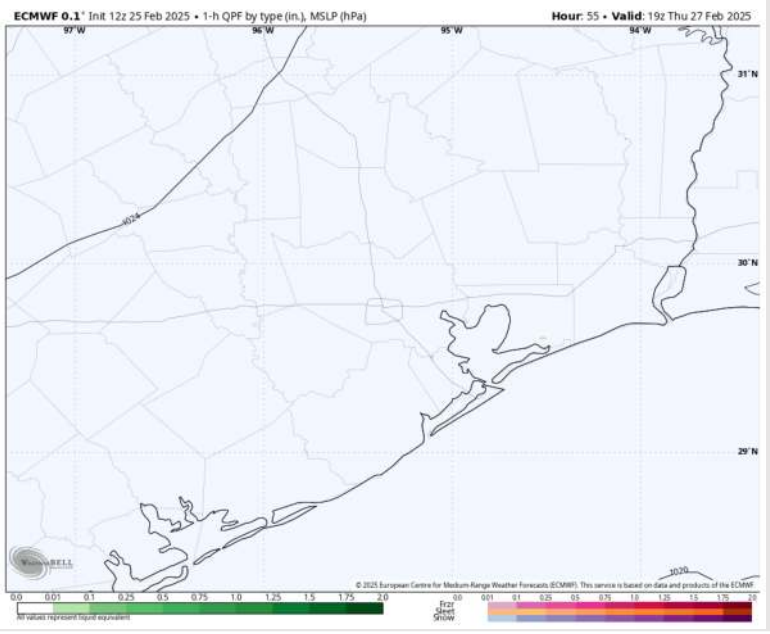


High Temps  
Wednesday

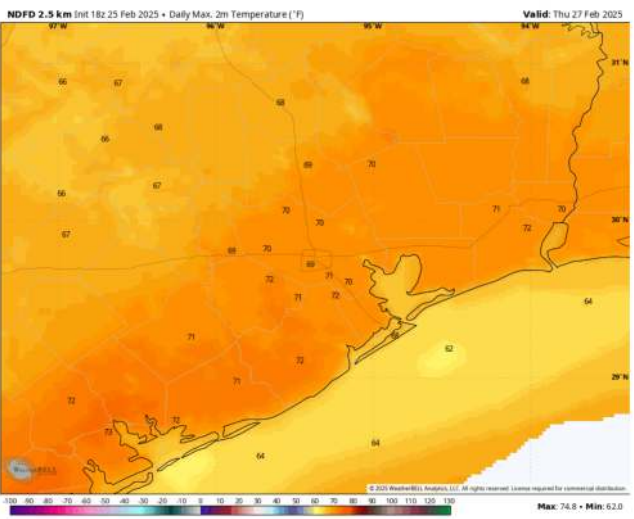
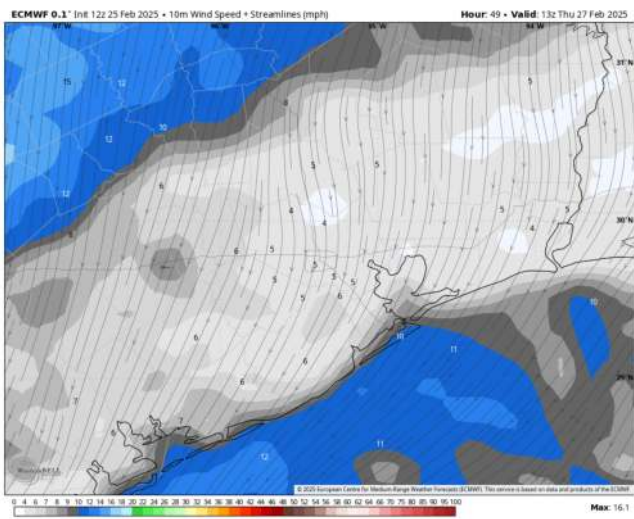
## Forecast Discussion

- Precip:** Favoring dry conditions for Thursday.
- Wind:** Winds start the day out of the SE, quickly shifting counterclockwise to be out of the NE by 5AM. **N of Morgan's Point:** Winds will be at 3 - 8 kts throughout the entire day. **S of Morgan's Point:** Winds will be 5 - 10 kts through the day.
- High Temps:** **N of Morgan's Point:** Upper 60s F to near 70 F. **S of Morgan's Point:** Mid to upper 60s F.
- Visibility:** Watching for fog risks to impact all Stations in the AM. Confidence overall is low on this threat.

## Precip Image: 1 PM CT



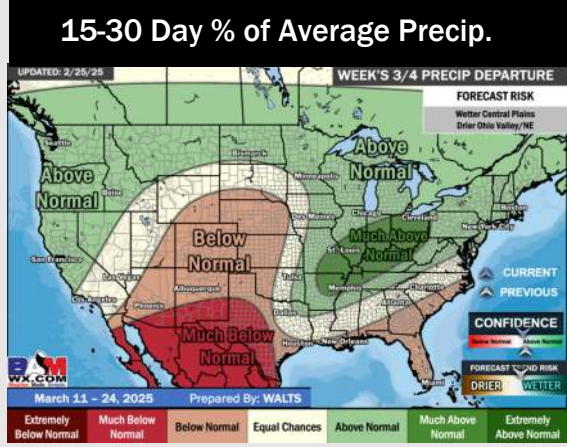
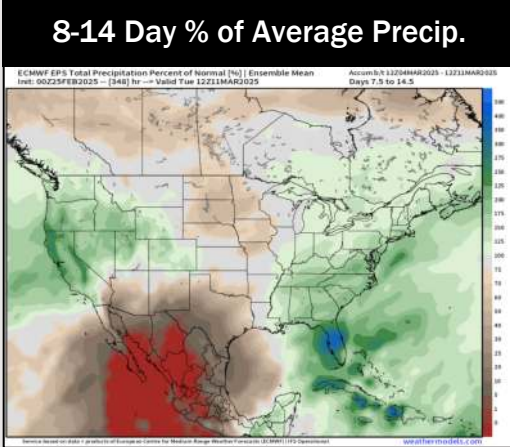
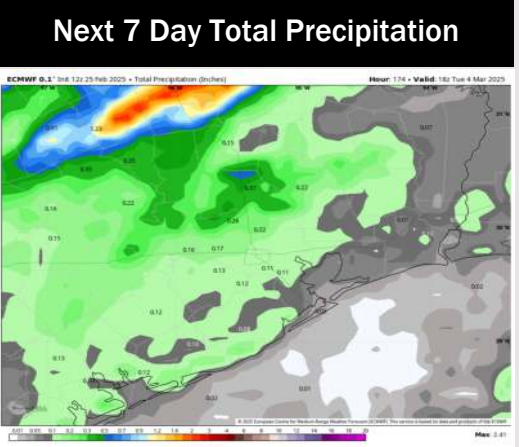
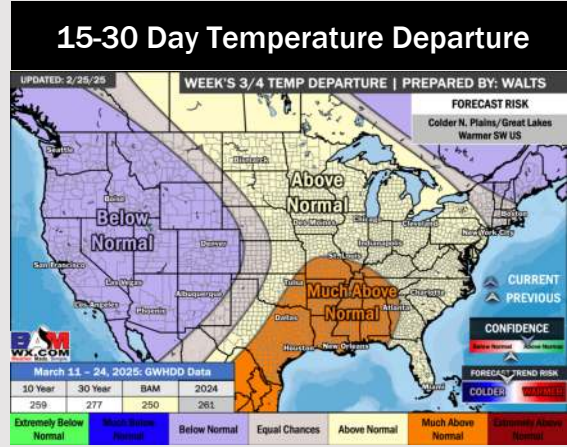
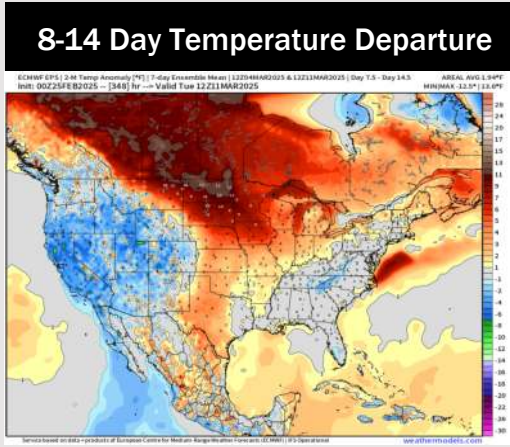
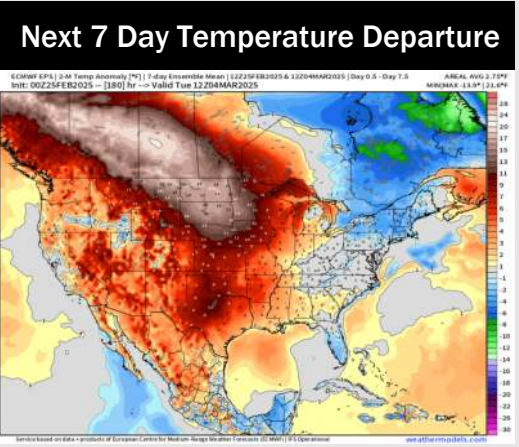
Wind Speed:  
7 AM CT



High Temps  
Thursday



# Houston Pilots: 2/25/25



- Temps are expected to be above normal for the week ahead. Favoring a drier week overall with scattered rain chances returning over the weekend and early next week.
- Near normal temps and below normal rainfall are expected for week 2.
- Much above normal temperatures and below normal precipitation chances are expected for the weeks 3/4 timeframe.