

Houston Pilots Forecast Package



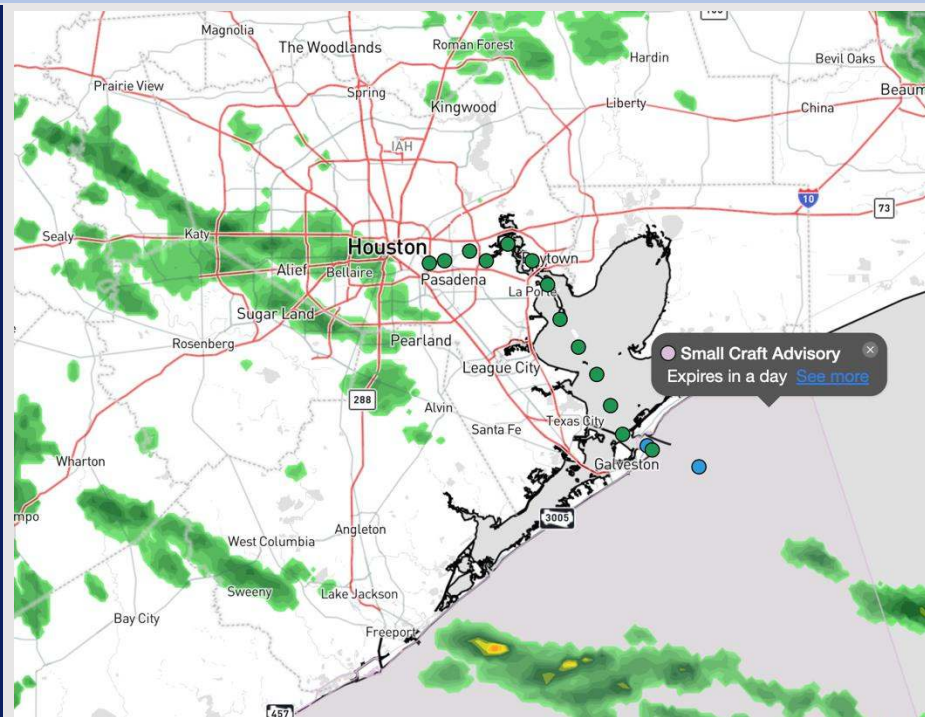
Updated: 12:10 PM CT

Saturday, February 22, 2025

Forecaster: Adam Feick

Weather Headlines

- Gusts of at least 20 kts will be possible for Stations S of Morgans Point throughout the next 48 hours.
- Scattered rain chances in play over the next 48 hours.
- Watching for fog chances to return early next week.



Current Radar: 11:55 AM CT

As always, please do not hesitate to reach out to us with any forecast questions at **(317)-560-8122**. Press **1** for forecast questions.

You can also access real-time forecast updates and 24/7 meteorological chat assistance on your [Clarity](#) app. Click [here](#) for login assistance.



Houston Pilots Extended Range Visibility Report



Tuesday 2/25/25

Watching for patchy sea-fog risks for all Stations TUE AM and TUE PM. Confidence on this threat is currently lower than normal.



Wednesday 2/26/25

Watching for patchy sea fog risks to linger into WED AM for Stations N of Morgan's Point. Confidence is low at this time.



Thursday 2/27/25

Watching for additional patchy sea fog risk THU AM for Stations N of Morgan's Point until a front passes. Confidence remains low.



Chance for Fog

Tuesday AM	Low-End
Tuesday PM	Low-End
Wednesday AM	Low-End
Wednesday PM	Unlikely
Thursday AM	Low-End
Thursday PM	Unlikely

Houston Pilots Visibility Chart (miles)



Forecast Confidence



Visibility	Sat 1 pm	Sat 2 pm	Sat 3 pm	Sat 4 pm	Sat 5 pm	Sat 6 pm	Sat 7 pm	Sat 8 pm	Sat 9 pm	Sat 10 pm	Sat 11 pm	Sun 12 am	Sun 1 am	Sun 2 am	Sun 3 am	Sun 4 am	Sun 5 am	Sun 6 am	Sun 7 am	Sun 8 am	Sun 9 am	Sun 10 am	Sun 11 am	Sun 12 pm
Houston Pilots N - 610 Bridge	9	7.9	6.9	3.9	4.9	3.9	3.9	4.9	4.9	4.9	4.9	3.9	4.9	3.9	3.9	4.9	4.9	4.9	4.9	4.9	2.9	2.9	4.9	6.9
Houston Pilots M - Kinder 1	9	7.9	6.9	3.9	4.9	3.9	3.9	4.9	4.9	4.9	4.9	3.9	4.9	3.9	3.9	4.9	4.9	4.9	4.9	4.9	2.9	2.9	4.9	6.9
Houston Pilots L - Greens Bayou	9	7.9	6.9	3.9	4.9	3.9	3.9	4.9	4.9	4.9	4.9	3.9	4.9	3.9	3.9	4.9	4.9	4.9	4.9	4.9	2.9	2.9	3.9	5.9
Houston Pilots K - Shell Crude	9	7.9	6.9	3.9	4.9	3.9	3.9	4.9	4.9	4.9	4.9	3.9	4.9	3.9	3.9	4.9	4.9	4.9	4.9	4.9	2.9	2.9	3.9	5.9
Houston Pilots J - Lynchburg Ferries	9	7.9	6.9	5.9	4.9	3.9	3.9	4.9	4.9	4.9	4.9	3.9	4.9	3.9	3.9	4.9	4.9	4.9	4.9	4.9	2.9	2.9	3.9	5.9
Houston Pilots I - Exxon 3	9	7.9	6.9	3.9	3.9	3.9	3.9	4.9	4.9	4.9	4.9	3.9	4.9	3.9	3.9	4.9	4.9	4.9	4.9	4.9	2.9	2.9	3.9	5.9
Houston Pilots H - Morgans Point	9	7.9	6.9	3.9	3.9	3.9	3.9	3.9	4.9	4.9	4.9	3.9	4.9	3.9	3.9	4.9	4.9	4.9	4.9	4.9	2.9	2.9	3.9	5.9
Houston Pilots G - 75/76	9	6.9	4.9	2.9	1.1	3.9	3.9	3.9	4.9	4.9	4.9	3.9	4.9	3.9	3.9	4.9	4.9	4.9	4.9	4.9	2.9	2.9	9	9
Houston Pilots F - 63/64	9	6.9	4.9	2.9	1.1	3.9	3.9	3.9	3.9	4.9	4.9	3.9	4.9	3.9	4.9	4.9	4.9	4.9	4.9	4.9	2.9	2.9	9	9
Houston Pilots E - 51/52	7.9	5.9	4.9	2.9	1.1	3.9	3.9	3.9	3.9	4.9	4.9	3.9	4.9	3.9	4.9	4.9	4.9	4.9	4.9	4.9	2.9	2.5	9	9
Houston Pilots D - 37/38	7.9	5.9	3.9	2.9	1.6	3.9	3.9	3.9	3.9	4.9	4.9	3.9	4.9	3.9	4.9	4.9	4.9	4.9	4.9	3.9	2.9	2.5	8	9
Houston Pilots C - 25/26	6.9	5.9	3.9	3.9	2.5	3.9	3.9	3.9	4.9	4.9	4.9	3.9	4.9	3.9	4.9	4.9	4.9	4.9	4.9	3.9	2.9	2.5	8	9
Houston Pilots B - 11/12	6.9	5.9	5.9	3.9	2.9	3.9	3.9	3.9	4.9	4.9	4.9	3.9	4.9	3.9	4.9	4.9	4.9	4.9	4.9	3.9	2.9	2.5	8	9
Houston Pilots A - 1 & 2 Bravo	6.9	5.9	5.9	3.9	2.9	2.9	3.9	3.9	4.9	4.9	4.9	4.9	4.9	3.9	4.9	4.9	4.9	4.9	4.9	3.9	2.9	2.5	8	9

NOTE: This is automated data that may/may not agree with the official BAM thinking that's found on the daily slides or special visibility report slides. This data should be used as a guide only

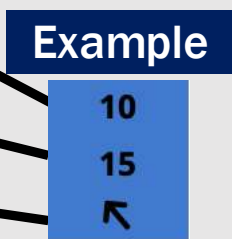
Houston Pilots Wind Chart



Forecast Confidence



Sustained wind 10 Knots
Gusts 15 Knots
Wind from the SE



Wind	Sat 1 pm	Sat 2 pm	Sat 3 pm	Sat 4 pm	Sat 5 pm	Sat 6 pm	Sat 7 pm	Sat 8 pm	Sat 9 pm	Sat 10 pm	Sat 11 pm	Sun 12 am	Sun 1 am	Sun 2 am	Sun 3 am	Sun 4 am	Sun 5 am	Sun 6 am	Sun 7 am	Sun 8 am	Sun 9 am	Sun 10 am	Sun 11 am	Sun 12 pm	
Houston Pilots N - 610 Bridge	8 16 ↙	8 16 ↙	8 16 ↙	8 16 ↙	8 16 ↙	8 15 ↙	8 15 ↙	7 14 ↙	7 14 ↙	6 14 ↙	6 13 ↙	6 13 ↙	6 13 ↙	6 13 ↙	6 14 ↙	7 14 ↙	7 15 ↓	7 15 ↓	8 16 ↓	8 15 ↓	7 15 ↓	7 15 ↓	8 14 ↓	8 15 ↓	
Houston Pilots M - Kinder 1	8 17 ↙	8 16 ↙	8 16 ↙	8 16 ↙	8 16 ↙	8 15 ↙	8 15 ↙	7 14 ↙	7 14 ↙	7 14 ↙	6 13 ↙	6 13 ↙	6 13 ↙	6 13 ↙	6 14 ↙	7 14 ↙	7 15 ↓	7 15 ↓	8 16 ↓	8 15 ↓	7 15 ↓	7 15 ↓	8 14 ↓	8 15 ↓	
Houston Pilots L - Greens Bayou	8 16 ↙	8 16 ↙	8 16 ↙	8 16 ↙	8 16 ↙	8 15 ↙	8 15 ↙	7 14 ↙	7 14 ↙	7 14 ↙	6 13 ↙	6 13 ↙	6 13 ↙	6 14 ↙	7 14 ↙	7 15 ↓	7 15 ↓	8 16 ↓	8 15 ↓	7 15 ↓	7 15 ↓	8 14 ↓	8 15 ↓	8 15 ↓	
Houston Pilots K - Shell Crude	8 17 ↙	8 17 ↙	8 17 ↙	8 16 ↙	8 16 ↙	8 15 ↙	8 15 ↙	8 14 ↙	7 14 ↙	7 14 ↙	7 14 ↙	6 14 ↙	6 13 ↙	6 14 ↙	7 14 ↙	7 15 ↓	8 15 ↓	8 16 ↓	8 16 ↓	8 15 ↓	8 15 ↓	8 15 ↓	8 15 ↓	8 15 ↓	
Houston Pilots J - Lynchburg Ferries	8 16 ↙	8 16 ↙	8 16 ↙	8 16 ↙	8 16 ↙	8 15 ↙	8 15 ↙	7 14 ↙	7 14 ↙	6 13 ↙	6 13 ↙	6 13 ↙	6 13 ↙	6 14 ↙	6 14 ↙	7 15 ↓	7 15 ↓	8 15 ↓	8 15 ↓	7 15 ↓	7 15 ↓	8 15 ↓	8 15 ↓	8 15 ↓	
Houston Pilots I - Exxon 3	10 17 ↙	9 17 ↙	10 17 ↙	10 17 ↙	10 17 ↙	10 16 ↙	10 16 ↙	10 15 ↙	10 15 ↙	10 15 ↙	10 15 ↙	9 15 ↙	9 14 ↙	9 15 ↙	10 15 ↙	10 15 ↙	10 15 ↙	10 15 ↙	10 17 ↙	10 16 ↙	10 16 ↙	10 16 ↙	10 15 ↙	9 16 ↙	
Houston Pilots H - Morgans Point	10 17 ↙	10 17 ↙	10 17 ↙	10 17 ↙	10 18 ↙	10 17 ↙	10 17 ↙	10 16 ↙	10 16 ↙	10 16 ↙	10 16 ↙	10 15 ↙	10 15 ↙	10 15 ↙	10 15 ↙	10 16 ↙	10 15 ↙	10 16 ↙	10 17 ↙	10 17 ↙	10 16 ↙	10 16 ↙	10 16 ↙	9 16 ↙	
Houston Pilots G - 75/76	12 20 ↙	12 20 ↙	12 20 ↙	12 20 ↙	13 20 ↙	13 20 ↙	13 20 ↙	13 18 ↙	13 17 ↙	13 17 ↙	13 17 ↙	13 17 ↙	13 17 ↙	13 17 ↙	13 17 ↙	13 18 ↙	13 18 ↙	14 20 ↓	14 20 ↓	13 18 ↓	13 18 ↓	13 18 ↓	12 18 ↓	12 18 ↓	
Houston Pilots F - 63/64	13 20 ↙	13 20 ↙	13 20 ↙	13 20 ↙	13 20 ↙	13 20 ↙	14 20 ↙	13 18 ↙	13 18 ↙	13 18 ↙	13 17 ↙	13 17 ↙	13 17 ↙	13 18 ↙	13 18 ↙	14 20 ↓	14 20 ↓	15 20 ↓	14 20 ↓	13 18 ↓	13 20 ↓	13 20 ↓	13 18 ↓	12 18 ↓	
Houston Pilots E - 51/52	13 21 ↙	13 21 ↙	13 21 ↙	13 21 ↙	14 21 ↙	14 21 ↙	15 20 ↙	14 20 ↙	14 20 ↙	14 20 ↙	14 20 ↙	14 20 ↙	13 18 ↙	14 20 ↙	14 20 ↙	14 20 ↙	15 21 ↙	15 21 ↙	15 21 ↙	15 21 ↙	14 20 ↙	13 20 ↙	13 20 ↙	13 20 ↙	
Houston Pilots D - 37/38	14 22 ↙	14 22 ↙	14 22 ↙	14 21 ↙	14 21 ↙	15 22 ↙	15 21 ↙	15 21 ↙	15 21 ↙	14 20 ↙	14 20 ↙	14 20 ↙	14 20 ↙	14 20 ↙	14 20 ↙	14 20 ↙	15 21 ↙	15 22 ↙	15 22 ↙	15 21 ↙	15 21 ↙	14 21 ↙	13 21 ↙	13 21 ↙	
Houston Pilots C - 25/26	15 22 ↙	15 22 ↙	15 22 ↙	14 22 ↙	15 22 ↙	15 22 ↙	15 22 ↙	15 21 ↙	15 22 ↙	15 22 ↙	15 21 ↙	15 21 ↙	15 21 ↙	15 21 ↙	15 21 ↙	15 22 ↙	15 22 ↙	15 22 ↙	15 22 ↙	15 22 ↙	15 22 ↙	15 21 ↙	15 21 ↙	14 21 ↙	13 21 ↙
Houston Pilots B - 11/12	15 22 ↙	15 22 ↙	15 22 ↙	15 22 ↙	15 22 ↙	15 22 ↙	15 22 ↙	15 22 ↙	15 22 ↙	14 21 ↙	14 21 ↙	14 21 ↙	14 21 ↙	14 21 ↙	14 21 ↙	14 22 ↙	15 22 ↙	15 22 ↙	15 22 ↙	15 22 ↙	15 22 ↙	14 21 ↙	14 21 ↙	14 21 ↙	14 21 ↙
Houston Pilots A - 1 & 2 Bravo	16 24 ↙	16 24 ↙	16 24 ↙	16 24 ↙	16 24 ↙	17 24 ↙	17 24 ↙	17 24 ↙	17 25 ↙	17 24 ↙	17 24 ↙	17 24 ↙	17 24 ↙	17 24 ↙	17 24 ↙	17 24 ↙	17 24 ↙	17 24 ↙	17 24 ↙	17 24 ↙	17 24 ↙	16 23 ↙	16 23 ↙	15 22 ↙	

NOTE: This is automated data that may/may not agree with the official BAM thinking that's found on the daily slides. This data should be used as a guide only.

Houston Pilots: SAT. 2/22/2025



Forecast Discussion

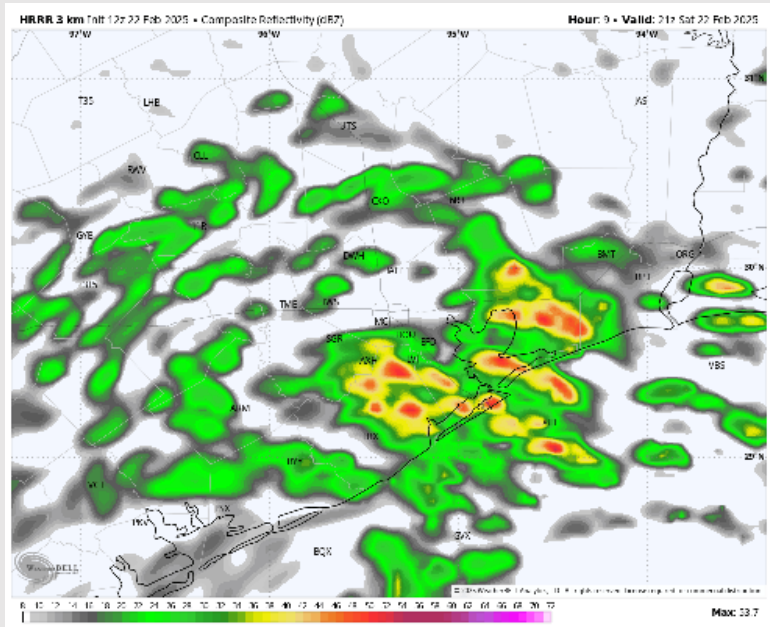
Precip: Scattered rain showers (60%) will be likely for all stations for the remainder of the day.

Wind: Winds will be out of the NE through the rest of the day. **N of Morgan's Point:** Winds will be at 4 – 9 kts through the rest of the day. **S of Morgan's Point:** Winds will be at 11 – 16 kts for today. **Gusts up to 20 kts will be possible for stations S of Morgan's Point.**

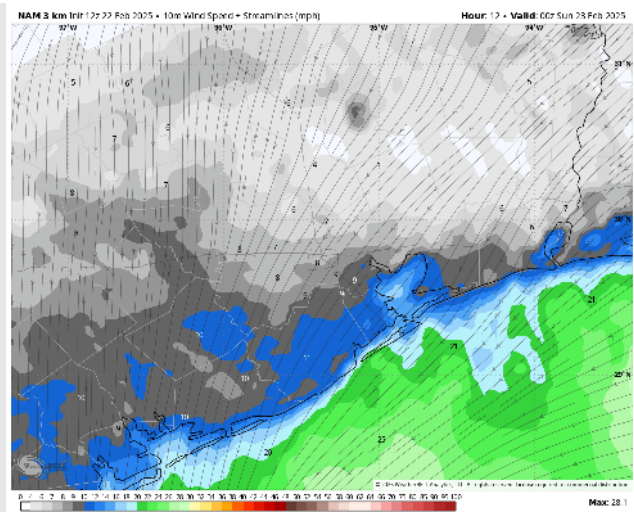
Low Temps: **N of Morgan's Point:** Mid to low 40 F. **S of Morgan's Point:** Upper 40s F.

Visibility: No fog concerns for today, however visibilities may be reduced under heavy downpours.

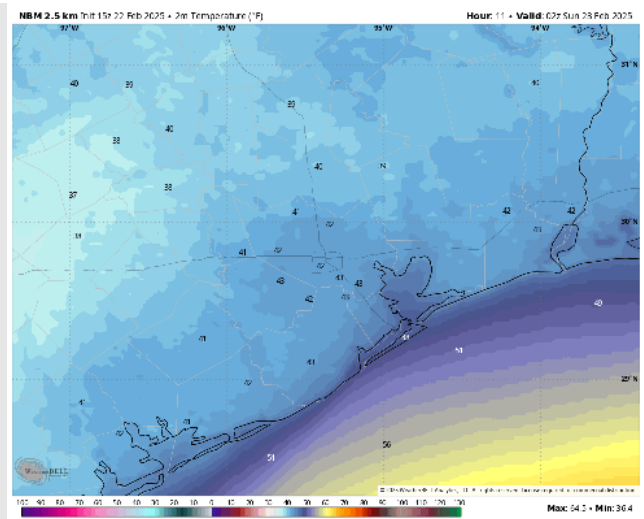
Precip Image: 3 PM CT



Wind Speed:
6 PM CT



Low Temps
SUN AM



Houston Pilots: SUN. 2/23/2025



Forecast Discussion

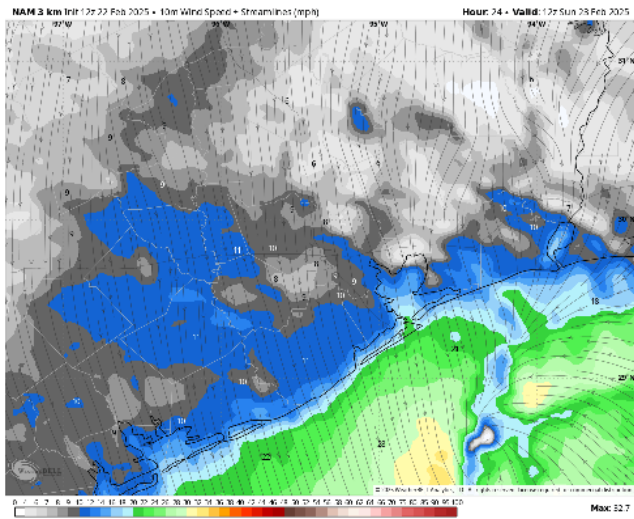
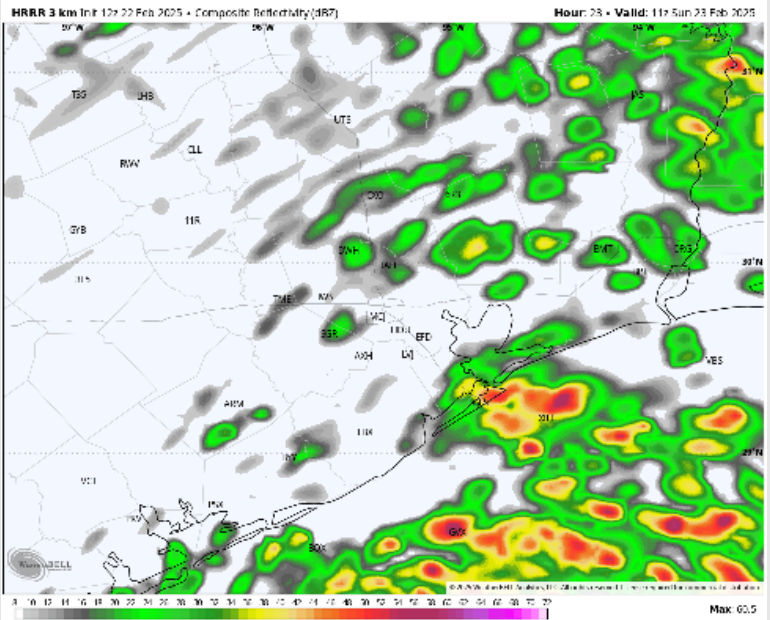
Precip: Scattered (50%) showers in play for all Stations through 6 AM. Scattered showers (50%) will be in play for stations south of Morgans Point through 1 PM.

Wind: Winds will be out of the N/NE throughout the day. **N of Morgan's Point:** Winds will be at 4 - 9 kts through Sunday. **S of Morgan's Point:** Winds will be at 11 - 18 kts throughout the day. **Gusts up to 20 - 25 kts will be possible for Stations S. of Morgan's Point through Sunday.**

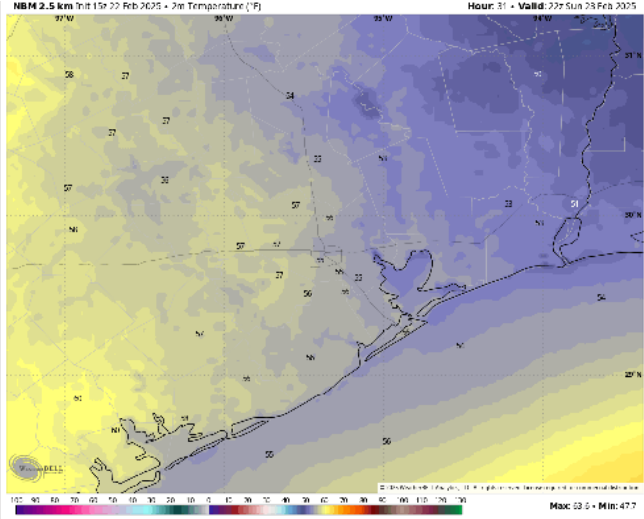
High Temps: **N of Morgan's Point:** Mid 50s F. **S of Morgan's Point:** Mid 50s F.

Visibility: No fog concerns for Sunday, however visibilities may be reduced under heavy downpours.

Precip Image: 5 AM CT



Wind Speed
6 AM CT



High Temps
Sunday

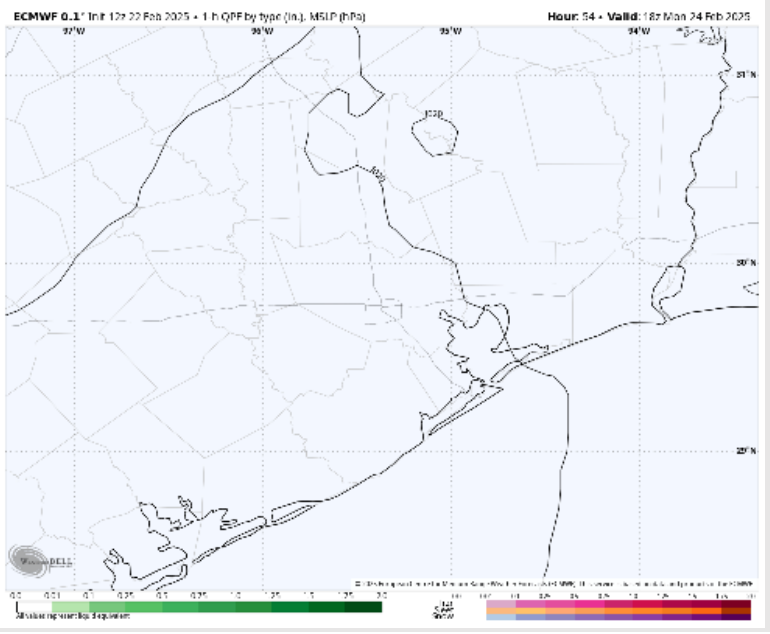
Houston Pilots: MON. 2/24/2025



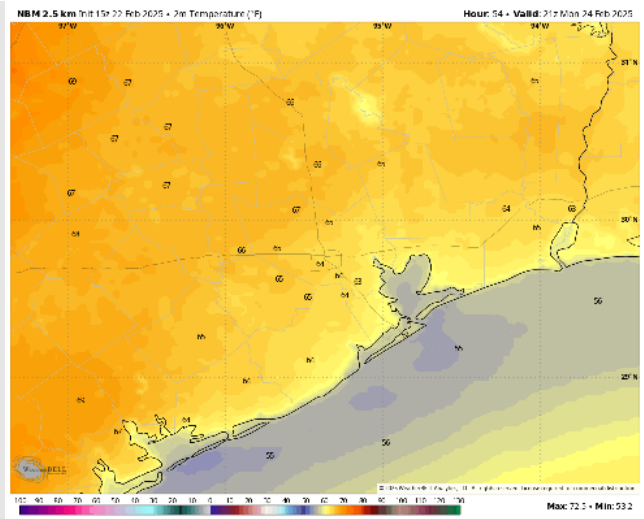
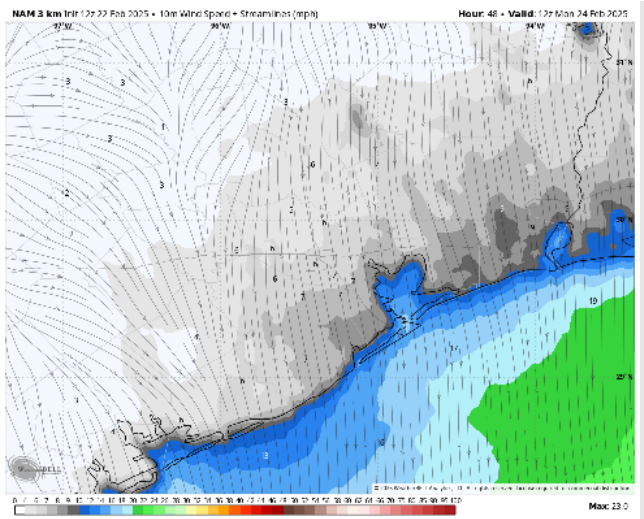
Forecast Discussion

- Precip:** Favoring dry conditions for Monday.
- Wind:** Winds will be out of the N/NE through 10 AM, shifting clockwise out of the S/SE through the rest of the day. **N of Morgan's Point:** Winds will be at 2 -5 kts throughout Monday. **S of Morgan's Point:** Winds will be 4 - 9 kts the rest of the night.
- High Temps:** **N of Morgan's Point:** Mid 60s F. **S of Morgan's Point:** Upper 50s F.
- Visibility:** Watching the potential for non-sea fog risks for Stations N. of Morgan's Point. Confidence is low.

Precip Image: 12 PM CT



Wind Speed:
6 AM CT

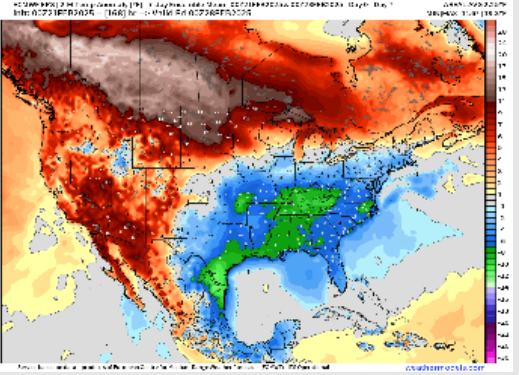


High Temps
Monday

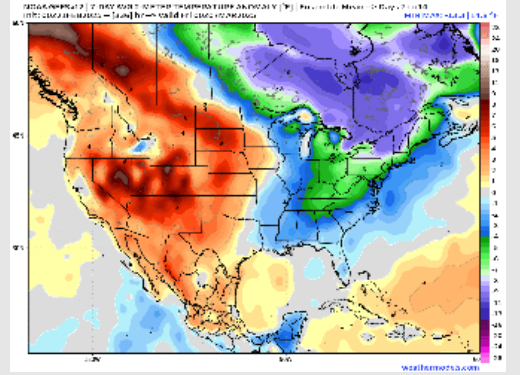
Houston Pilots: 2/22/25



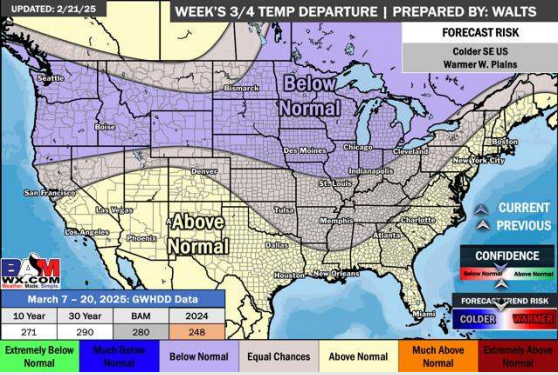
Next 7 Day Temperature Departure



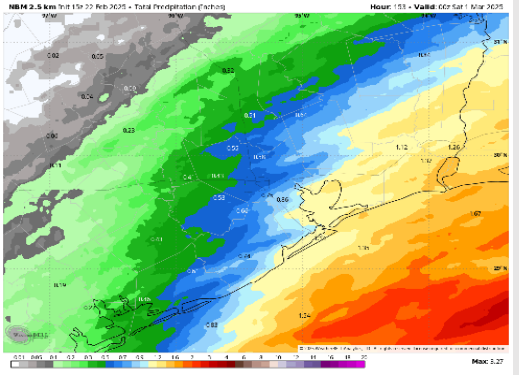
8-14 Day Temperature Departure



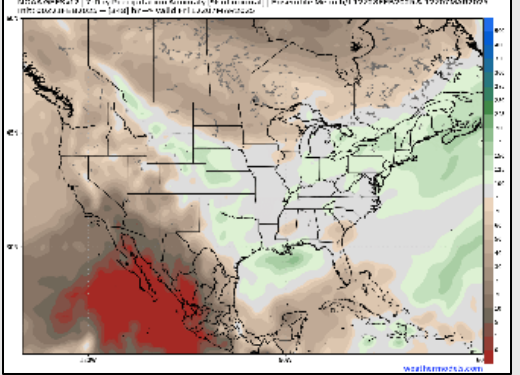
15-30 Day Temperature Departure



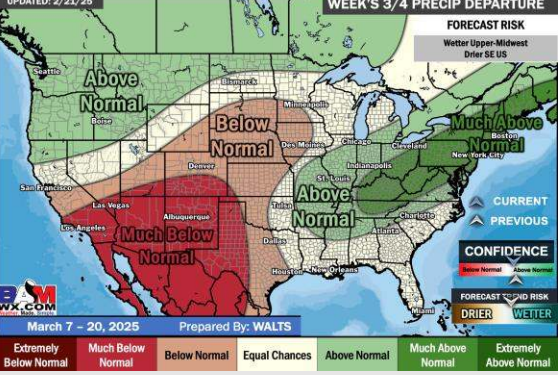
Next 7 Day Total Precipitation



8-14 Day % of Average Precip.



15-30 Day % of Average Precip.



- Temps are expected to be much below normal for the week ahead. Rain chances favored over the weekend and early next week.
- Near normal temps and slightly above normal rainfall are expected for week 2.
- Above normal temperatures and below normal precipitation chances are expected for the weeks 3/4 timeframe.