

Houston Pilots Forecast Package



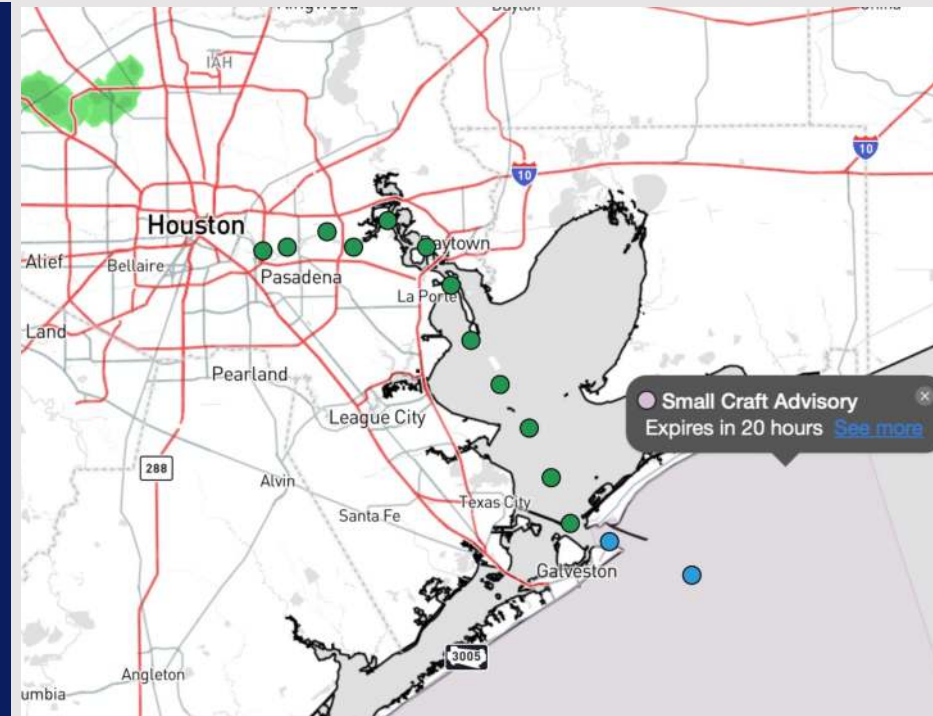
Updated: 10:30 PM CT

Friday, February 21, 2025

Forecaster: Tyler Riggles

Weather Headlines

- Gusts of at least 20 kts will be possible for Stations throughout the next 48 hours.
- Scattered rain chances in play over the next 48 hours.
- Watching for fog chances to return early next week.



Current Radar: 10:25 PM CT

As always, please do not hesitate to reach out to us with any forecast questions at **(317)-560-8122**. Press 1 for forecast questions.

You can also access real-time forecast updates and 24/7 meteorological chat assistance on your [Clarity](#) app. Click [here](#) for login assistance.



Houston Pilots Extended Range Visibility Report



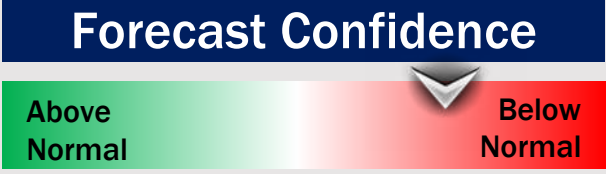
Tuesday 2/25/25

Watching for patchy sea-fog risks for all Stations TUE AM and TUE PM. Confidence on this threat is currently lower than normal.



Wednesday 2/26/25

Watching for patchy sea fog risks to linger into WED AM for Stations N of Morgan's Point. Confidence is low at this time.



Thursday 2/27/25

Watching for additional patchy sea fog risk THU AM for Stations N of Morgan's Point. Confidence remains low.



Chance for Fog

Tuesday AM	Low-End
Tuesday PM	Low-End
Wednesday AM	Low-End
Wednesday PM	Unlikely
Thursday AM	Low-End
Thursday PM	Unlikely

Houston Pilots Visibility Chart (miles)



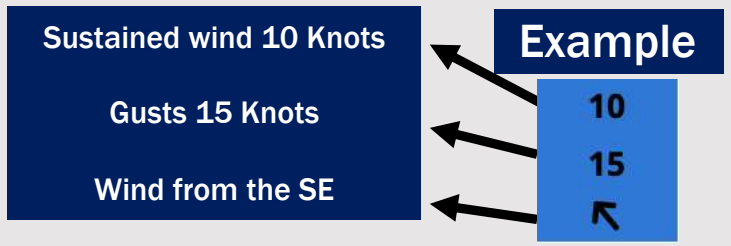
Forecast Confidence



Visibility	Sat 12 am	Sat 1 am	Sat 2 am	Sat 3 am	Sat 4 am	Sat 5 am	Sat 6 am	Sat 7 am	Sat 8 am	Sat 9 am	Sat 10 am	Sat 11 am	Sat 12 pm	Sat 1 pm	Sat 2 pm	Sat 3 pm	Sat 4 pm	Sat 5 pm	Sat 6 pm	Sat 7 pm	Sat 8 pm	Sat 9 pm	Sat 10 pm	Sat 11 pm	
Houston Pilots N - 610 Bridge	10	10	10	10	10	10	10	10	10	10	10	10	10	10	7.9	6.9	5.9	5.9	4.9	5.9	4.9	4.9	4.9	4.9	
Houston Pilots M - Kinder 1	10	10	10	10	10	10	10	10	10	10	10	10	10	10	7.9	6.9	5.9	5.9	4.9	5.9	4.9	4.9	4.9	4.9	
Houston Pilots L - Greens Bayou	10	10	10	10	10	10	10	10	10	10	10	10	10	10	7.9	6.9	5.9	5.9	4.9	5.9	4.9	4.9	4.9	4.9	
Houston Pilots K - Shell Crude	10	10	10	10	10	10	10	10	10	10	10	10	10	10	7.9	6.9	5.9	5.9	4.9	5.9	4.9	4.9	4.9	4.9	
Houston Pilots J - Lynchburg Ferries	10	10	10	10	10	10	10	10	10	10	10	10	10	10	7.9	6.9	5.9	5.9	4.9	5.9	4.9	4.9	4.9	4.9	
Houston Pilots I - Exxon 3	10	10	10	10	10	10	10	10	10	10	10	10	10	10	7.9	6.9	5.9	5.9	4.9	5.9	4.9	4.9	4.9	4.9	
Houston Pilots H - Morgans Point	10	10	10	10	10	10	10	10	10	10	10	10	10	10	7.9	6.9	5.9	5.9	4.9	5.9	4.9	4.9	4.9	4.9	
Houston Pilots G - 75/76	10	10	10	10	10	10	10	10	10	10	10	10	10	10	7.9	6.9	6.9	5.9	4.9	4.9	4.9	4.9	4.9	8	7
Houston Pilots F - 63/64	10	10	10	10	10	10	10	10	10	10	10	10	10	10	7.9	5.9	6.9	4.9	4.9	4.9	4.9	4.9	4.9	8	7
Houston Pilots E - 51/52	10	10	10	10	10	10	10	10	10	10	10	10	10	10	7.9	5.9	6.9	4.9	4.9	4.9	4.9	4.9	4.9	8	7
Houston Pilots D - 37/38	10	10	10	10	10	10	10	10	10	10	10	10	10	10	7.9	5.9	6.9	4.9	4.9	4.9	4.9	4.9	4.9	8	8
Houston Pilots C - 25/26	10	10	10	10	10	10	10	10	10	10	10	10	10	9	6.9	4.9	5.9	4.9	4.9	4.9	4.9	4.9	4.9	7	8
Houston Pilots B - 11/12	10	10	10	10	10	10	10	10	10	10	10	10	10	7.9	6.9	4.9	4.9	4.9	4.9	4.9	4.9	4.9	4.9	6	8
Houston Pilots A - 1 & 2 Bravo	10	10	10	10	10	10	10	10	10	10	10	9	7.9	7.9	6.9	4.9	5.9	4.9	3.9	4.9	4.9	4.9	4.9	6	8

NOTE: This is automated data that may/may not agree with the official BAM thinking that's found on the daily slides or special visibility report slides. This data should be used as a guide only

Houston Pilots Wind Chart



Wind	Sat 12 am	Sat 1 am	Sat 2 am	Sat 3 am	Sat 4 am	Sat 5 am	Sat 6 am	Sat 7 am	Sat 8 am	Sat 9 am	Sat 10 am	Sat 11 am	Sat 12 pm	Sat 1 pm	Sat 2 pm	Sat 3 pm	Sat 4 pm	Sat 5 pm	Sat 6 pm	Sat 7 pm	Sat 8 pm	Sat 9 pm	Sat 10 pm	Sat 11 pm
Houston Pilots N - 610 Bridge	6 13 ↙	6 12 ↙	6 13 ↙	6 13 ↙	6 14 ↙	7 14 ↙	7 14 ↙	7 14 ↙	7 15 ↙	7 15 ↙	8 15 ↙	8 15 ↙	8 15 ↙	8 15 ↙	7 15 ↙	7 15 ↙	7 14 ↙	7 14 ↙	7 14 ↙	7 13 ↙	6 13 ↙	6 13 ↙	6 13 ↙	6 13 ↙
Houston Pilots M - Kinder 1	6 13 ↙	6 12 ↙	6 13 ↙	6 13 ↙	7 14 ↙	7 14 ↙	7 14 ↙	7 14 ↙	7 15 ↙	7 15 ↙	8 15 ↙	8 15 ↙	8 15 ↙	8 15 ↙	8 15 ↙	7 15 ↙	7 14 ↙	8 15 ↙	7 14 ↙	7 13 ↙	6 13 ↙	6 13 ↙	6 13 ↙	6 13 ↙
Houston Pilots L - Greens Bayou	6 13 ↙	6 12 ↙	6 13 ↙	6 13 ↙	6 14 ↙	7 14 ↙	7 14 ↙	7 14 ↙	7 15 ↙	7 15 ↙	8 15 ↙	8 15 ↙	8 15 ↙	8 15 ↙	7 15 ↙	7 14 ↙	8 14 ↙	8 14 ↙	8 13 ↙	7 13 ↙	7 13 ↙	6 13 ↙	6 12 ↙	6 12 ↙
Houston Pilots K - Shell Crude	6 13 ↙	6 13 ↙	6 13 ↙	6 13 ↙	7 14 ↙	7 14 ↙	7 14 ↙	7 15 ↙	7 15 ↙	7 15 ↙	8 15 ↙	8 15 ↙	8 15 ↙	8 15 ↙	8 15 ↙	8 15 ↙	8 15 ↙	8 14 ↙	7 14 ↙	7 13 ↙	6 13 ↙	6 13 ↙	6 13 ↙	6 13 ↙
Houston Pilots J - Lynchburg Ferries	6 12 ↙	6 12 ↙	6 12 ↙	6 13 ↙	6 13 ↙	6 13 ↙	6 14 ↙	7 14 ↙	7 15 ↙	7 14 ↙	7 15 ↙	8 14 ↙	8 15 ↙	8 15 ↙	8 15 ↙	8 15 ↙	8 14 ↙	7 14 ↙	7 13 ↙	6 13 ↙	6 12 ↙	6 12 ↙	6 12 ↙	6 12 ↙
Houston Pilots I - Exxon 3	9 14 ↙	8 14 ↙	9 14 ↙	9 14 ↙	9 15 ↙	9 15 ↙	10 15 ↙	10 15 ↙	10 15 ↙	10 15 ↙	9 15 ↙	9 15 ↙	9 15 ↙	8 16 ↙	8 16 ↙	8 16 ↙	8 15 ↙	9 15 ↙	9 15 ↙	9 14 ↙	9 14 ↙	8 14 ↙	8 14 ↙	8 14 ↙
Houston Pilots H - Morgans Point	9 15 ↙	9 14 ↙	9 14 ↙	9 15 ↙	9 15 ↙	10 15 ↙	10 15 ↙	10 16 ↙	10 16 ↙	10 16 ↙	10 16 ↙	9 16 ↙	9 16 ↙	9 16 ↙	9 16 ↙	9 16 ↙	9 16 ↙	9 15 ↙	9 15 ↙	9 15 ↙	9 15 ↙	9 15 ↙	9 15 ↙	9 15 ↙
Houston Pilots G - 75/76	12 16 ↙	12 16 ↙	12 16 ↙	12 16 ↙	12 16 ↙	13 17 ↙	13 17 ↙	13 17 ↙	13 17 ↙	13 17 ↙	12 17 ↙	12 18 ↙	10 18 ↙	10 17 ↙	10 17 ↙	10 17 ↙	10 17 ↙	10 18 ↙	12 17 ↙	12 17 ↙	12 17 ↙	12 17 ↙	12 17 ↙	12 17 ↙
Houston Pilots F - 63/64	13 16 ↙	12 17 ↙	12 16 ↙	13 16 ↙	13 16 ↙	13 17 ↙	13 17 ↙	13 17 ↙	13 18 ↙	13 17 ↙	12 17 ↙	12 18 ↙	12 18 ↙	10 18 ↙	10 17 ↙	10 17 ↙	10 18 ↙	12 18 ↙	12 17 ↙	12 17 ↙	12 17 ↙	12 17 ↙	12 17 ↙	13 17 ↙
Houston Pilots E - 51/52	13 17 ↙	13 17 ↙	13 17 ↙	13 17 ↙	13 18 ↙	13 18 ↙	14 18 ↙	14 18 ↙	14 20 ↙	14 18 ↙	13 20 ↙	13 20 ↙	13 20 ↙	12 18 ↙	12 18 ↙	12 18 ↙	12 20 ↙	13 20 ↙	13 18 ↙	13 18 ↙	13 17 ↙	13 17 ↙	13 17 ↙	13 17 ↙
Houston Pilots D - 37/38	13 18 ↙	13 17 ↙	13 17 ↙	13 18 ↙	13 18 ↙	14 20 ↙	14 20 ↙	14 20 ↙	14 20 ↙	14 20 ↙	14 20 ↙	13 21 ↙	13 21 ↙	13 20 ↙	13 20 ↙	13 20 ↙	13 20 ↙	13 20 ↙	13 20 ↙	13 18 ↙	13 18 ↙	13 18 ↙	13 18 ↙	13 18 ↙
Houston Pilots C - 25/26	13 18 ↙	13 17 ↙	13 18 ↙	13 18 ↙	13 18 ↙	14 20 ↙	14 20 ↙	14 20 ↙	14 21 ↙	14 21 ↙	14 21 ↙	14 21 ↙	14 21 ↙	13 20 ↙	13 21 ↙	13 21 ↙	13 21 ↙	13 21 ↙	13 21 ↙	13 20 ↙	13 20 ↙	13 20 ↙	13 20 ↙	14 20 ↙
Houston Pilots B - 11/12	13 18 ↙	13 17 ↙	13 18 ↙	13 18 ↙	13 18 ↙	13 20 ↙	13 20 ↙	14 20 ↙	14 21 ↙	14 21 ↙	14 21 ↙	14 21 ↙	14 21 ↙	13 20 ↙	13 20 ↙	13 20 ↙	13 20 ↙	13 20 ↙	13 20 ↙	13 20 ↙	13 20 ↙	13 20 ↙	13 20 ↙	13 20 ↙
Houston Pilots A - 1 & 2 Bravo	15 21 ↙	14 20 ↙	15 21 ↙	15 21 ↙	15 21 ↙	15 21 ↙	15 22 ↙	15 22 ↙	16 22 ↙	16 22 ↙	16 22 ↙	15 22 ↙	15 22 ↙	15 22 ↙	15 22 ↙	15 22 ↙	15 22 ↙	15 22 ↙	15 22 ↙	15 22 ↙	16 23 ↙	16 23 ↙	16 23 ↙	16 23 ↙

NOTE: This is automated data that may/may not agree with the official BAM thinking that's found on the daily slides. This data should be used as a guide only.

Houston Pilots: SAT. 2/22/2025



Forecast Discussion

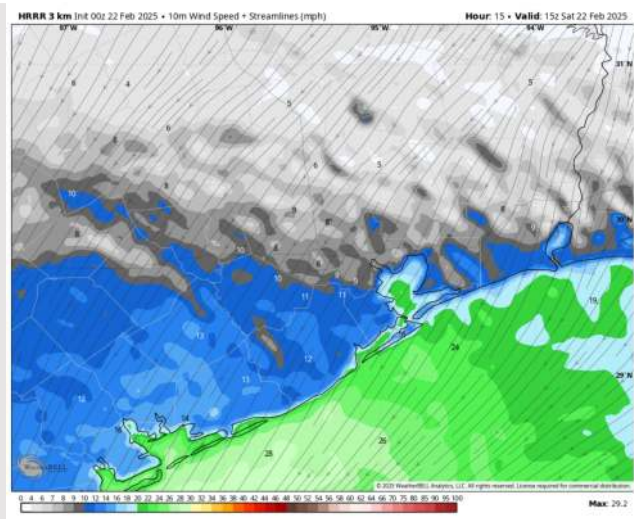
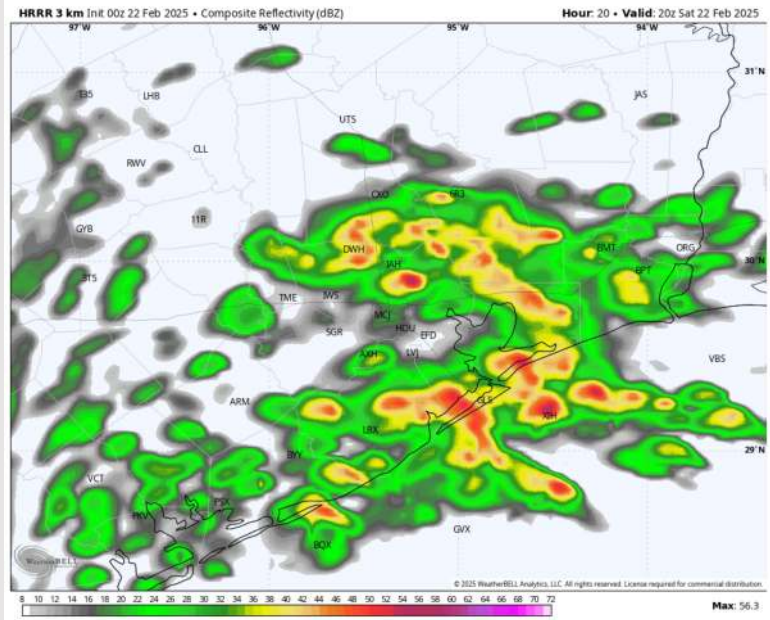
Precip: Favoring scattered pockets of drizzle / light rain (30%) to be possible for all stations from 4AM – 11AM. Coverage will then become scattered (50%) for the remainder of the day.

Wind: Winds will be out of the ENE throughout the day. **N of Morgan's Point:** Winds will be at 3 – 8 kts through today. **S of Morgan's Point:** Winds will be at 10 – 15 kts for today. **Gusts up to 20 kts will be possible at the Boarding Station throughout the day.**

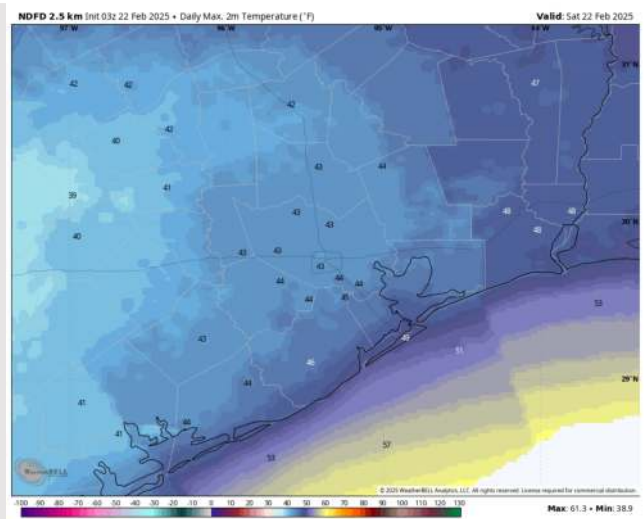
High Temps: **N of Morgan's Point:** Near 50 F. **S of Morgan's Point:** Mid 40s F.

Visibility: No fog concerns for today, however visibilities may be reduced under heavy downpours.

Precip Image: 2 PM CT



Wind Speed:
9 AM CT



High Temps
Today

Houston Pilots: SUN. 2/23/2025



Forecast Discussion

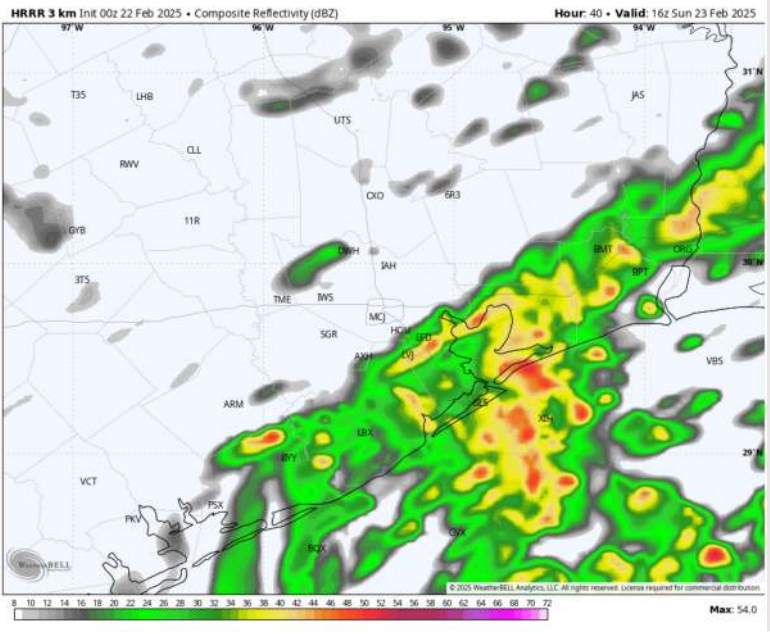
Precip: Scattered to widespread (60-70%) showers in play for all Stations through 3 PM.

Wind: Winds will be out of the E/NE throughout the day. **N of Morgan's Point:** Winds will be at 4 - 9 kts through Sunday. **S of Morgan's Point:** Winds will be at 12 - 17 kts throughout the day. **Gusts up to 20 - 25 kts will be possible for Stations S. of Morgan's Point through Sunday.**

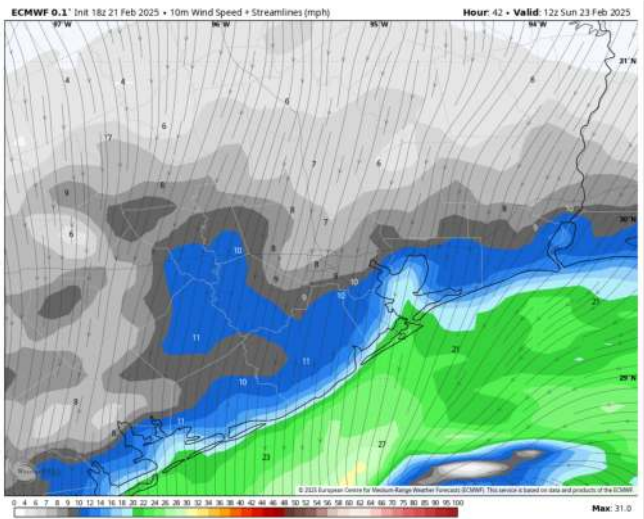
High Temps: **N of Morgan's Point:** Mid 50s F. **S of Morgan's Point:** Mid 50s F.

Visibility: No fog concerns for Sunday, however visibilities may be reduced under heavy downpours.

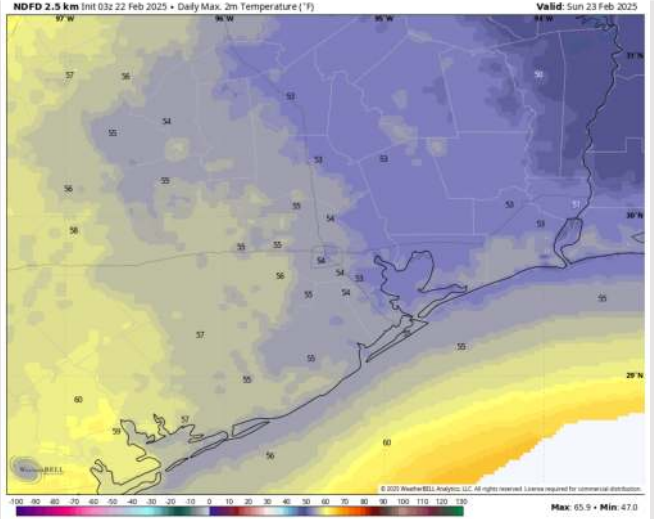
Precip Image: 10 AM CT



Wind Speed
6 AM CT



High Temps
Sunday



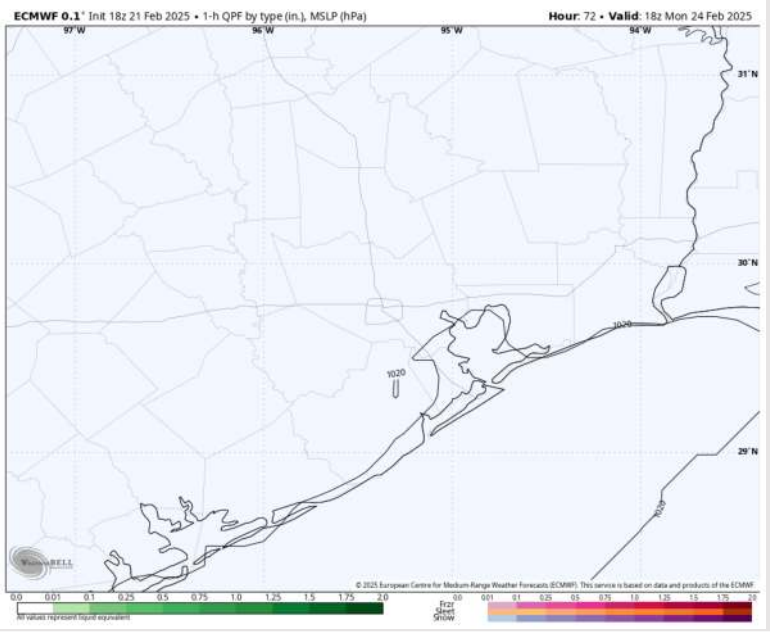
Houston Pilots: MON. 2/24/2025



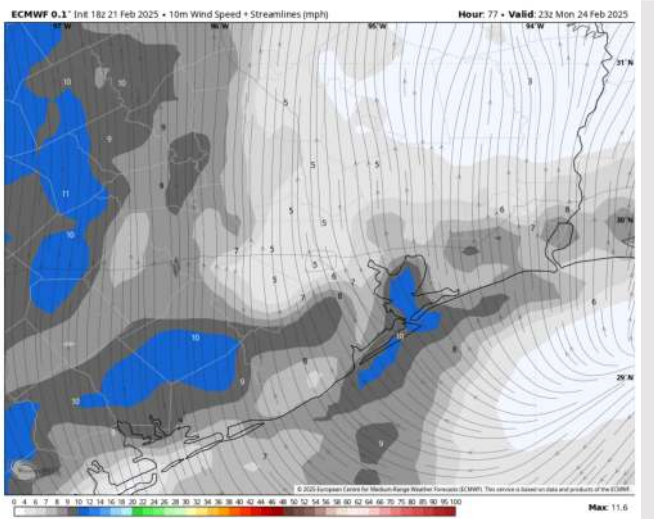
Forecast Discussion

- Precip:** Favoring dry conditions for Monday.
- Wind:** Winds will be out of the N/NE through 10 AM, shifting clockwise out of the SE after that time. **N of Morgan's Point:** Winds will be at 2 - 7 kts throughout Monday. **S of Morgan's Point:** Winds will be 4 - 9 kts the rest of the night.
- High Temps:** **N of Morgan's Point:** High 60s - Near 70 F. **S of Morgan's Point:** Mid 60s F.
- Visibility:** Watching the potential for non-sea fog risks for Stations N. of Morgan's Point. Confidence is low.

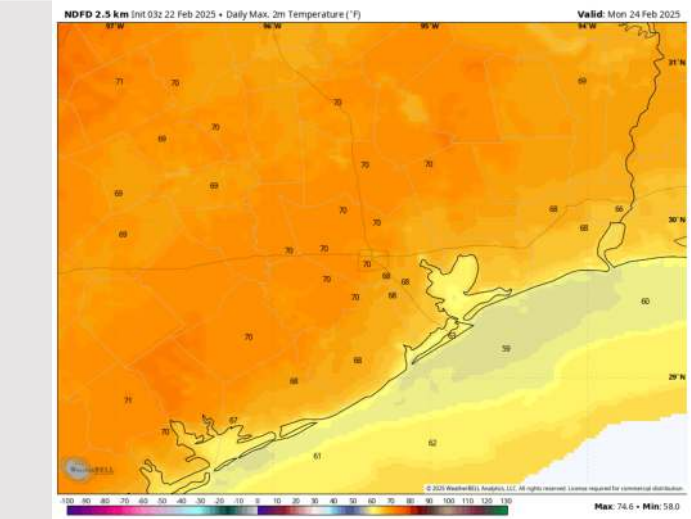
Precip Image: 12 PM CT



Wind Speed:

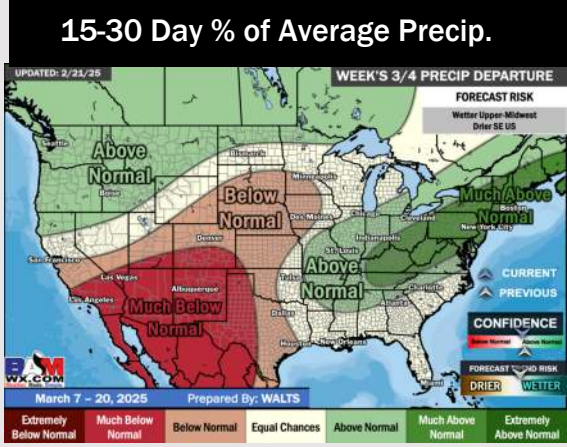
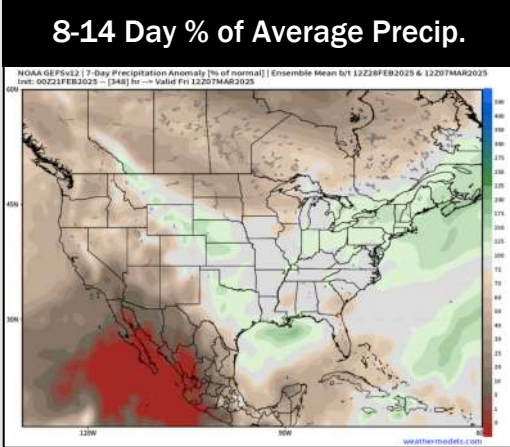
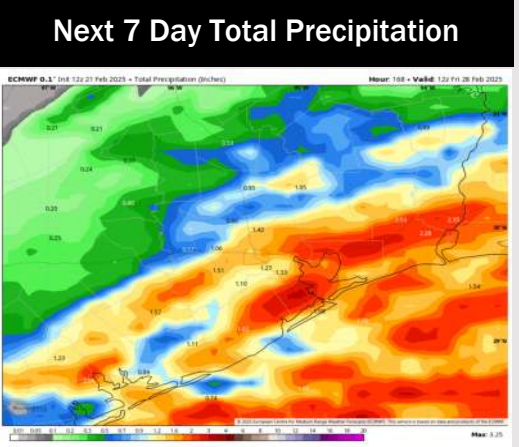
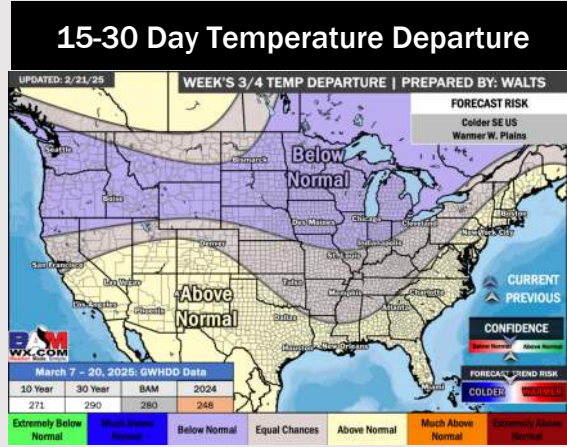
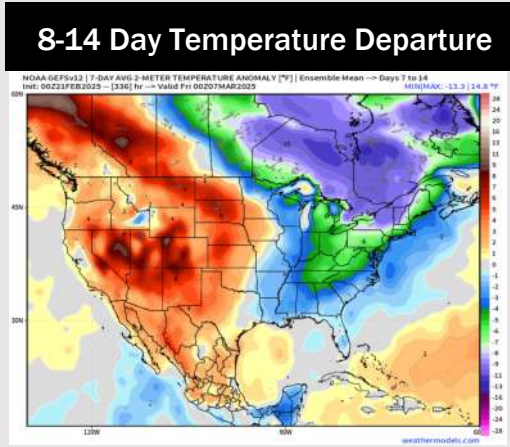


Wind Speed:
5 PM CT



High Temps
Monday

Houston Pilots: 2/22/25



- Temps are expected to be much below normal for the week ahead. Rain chances favored over the weekend and early next week.
- Near normal temps and slightly above normal rainfall are expected for week 2.
- Above normal temperatures and below normal precipitation chances are expected for the weeks 3/4 timeframe.