

# Houston Pilots Forecast Package



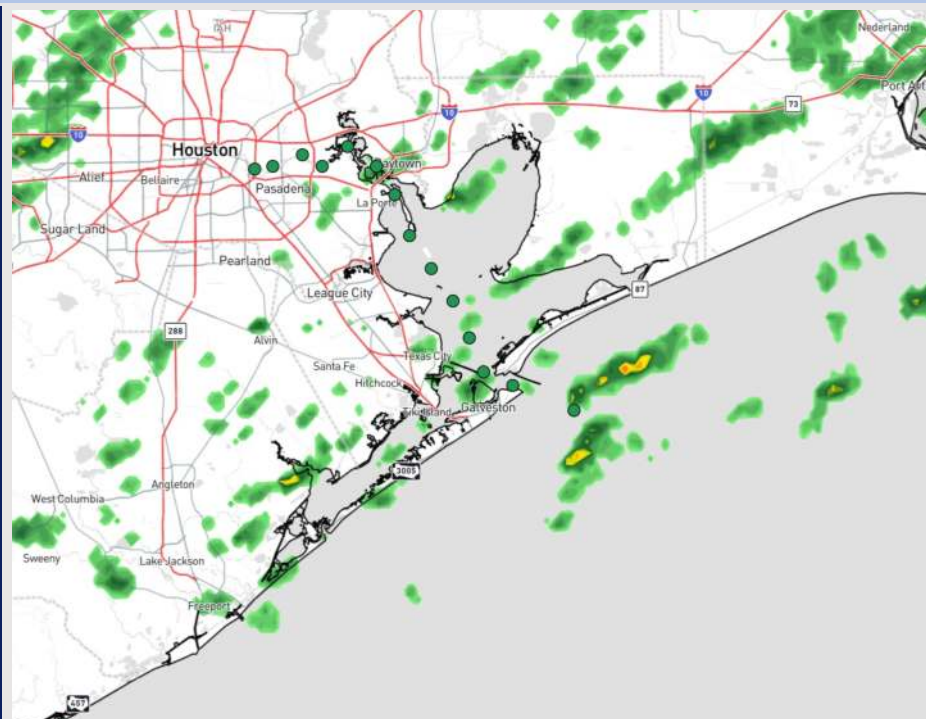
Updated: 1:15 AM CT

Wednesday, February 12, 2025

Forecaster: John Kemper

## Weather Headlines

- **Watching for patchy sea-fog to return briefly later this AM ahead of a front. See visibility slide for more details.**
- **Storms, some strong, will be possible through early afternoon.**
- **Gusty winds are in store for Wednesday and Thursday, with gusts of 20 – 25 kts possible.**



**Current Radar: 1:10 AM CT**

As always, please do not hesitate to reach out to us with any forecast questions at **(317)-560-8122**. Press **1** for forecast questions.

**You can also access real-time forecast updates and 24/7 meteorological chat assistance on your [Clarity](#) app. Click [here](#) for login assistance.**



# Houston Pilots Visibility Report



TIMEFRAME DISCUSSED	THREAT
2 AM – 6 AM WED	Low

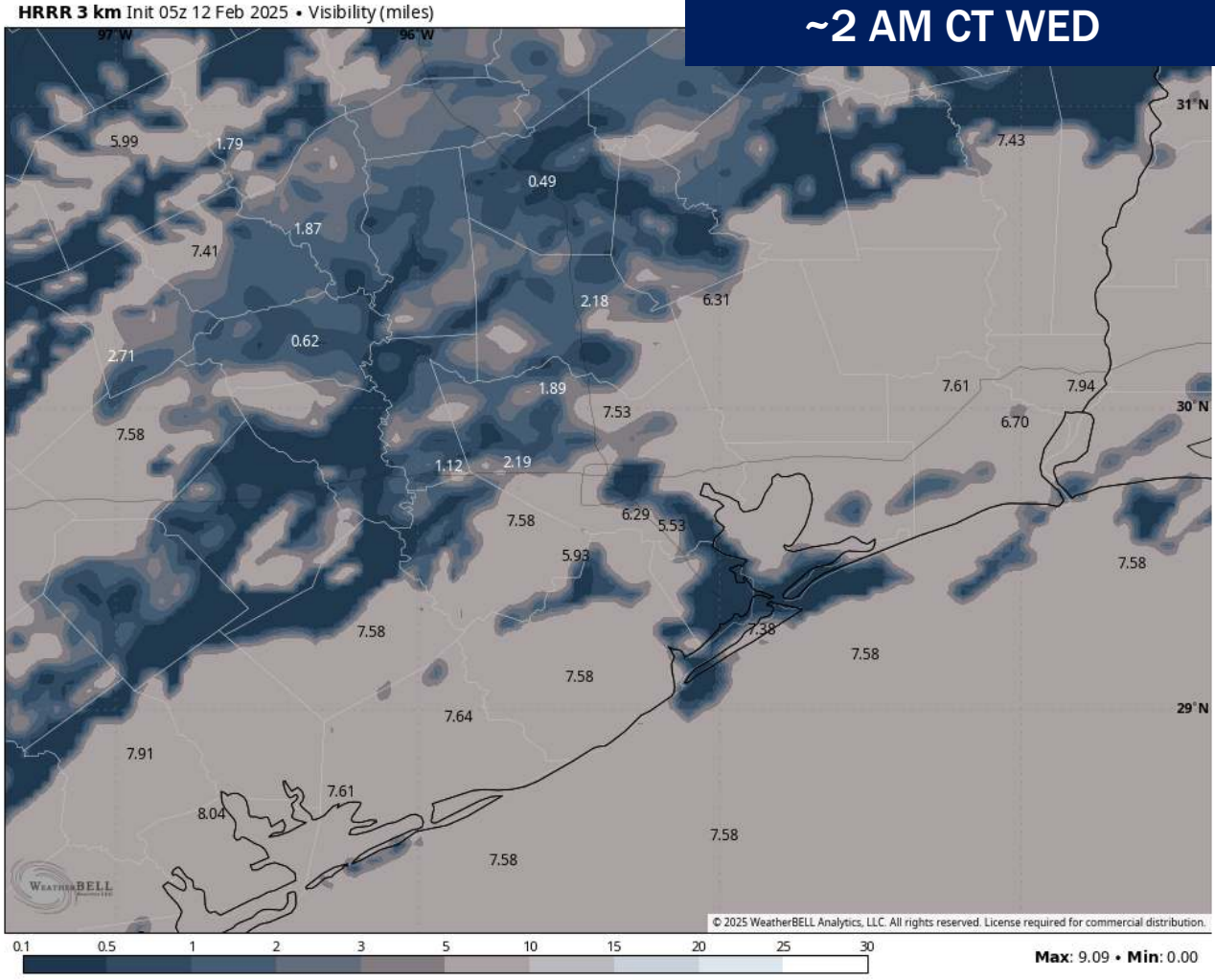
### Forecast Confidence

Above Normal Below Normal

Watching for a low-end risk for brief instances of patchy sea fog, which can reduce visibility for **Stations S of Morgan's Point** to less than 2 miles from 2AM – 6AM WED.

This window of opportunity continues to shrink as winds shifting out of the SE has been delayed by a couple hours. In addition, for showers continue to develop near the bay.

Confidence is increasing that this will be a low end, very brief risk.



# Houston Pilots Extended Range Visibility Report



## Saturday 2/15/25

No fog concerns for Saturday.

### Forecast Confidence



## Sunday 2/16/25

No fog concerns for Sunday.

### Forecast Confidence



## Monday 2/17/25

No fog concerns for Monday.

### Forecast Confidence



## Chance for Fog

Saturday AM	Unlikely
Saturday PM	Unlikely
Sunday AM	Unlikely
Sunday PM	Unlikely
Monday AM	Unlikely
Monday PM	Unlikely

# Houston Pilots Visibility Chart (miles)



## Forecast Confidence



Visibility	Wed 2 am	Wed 3 am	Wed 4 am	Wed 5 am	Wed 6 am	Wed 7 am	Wed 8 am	Wed 9 am	Wed 10 am	Wed 11 am	Wed 12 pm	Wed 1 pm	Wed 2 pm	Wed 3 pm	Wed 4 pm	Wed 5 pm	Wed 6 pm	Wed 7 pm	Wed 8 pm	Wed 9 pm	Wed 10 pm	Wed 11 pm	Thu 12 am	Thu 1 am
Houston Pilots N - 610 Bridge	8	8	3.9	5.9	4.9	2	3.9	3.9	4.9	2	2	3.9	5.9	6.9	6.9	6.9	6.9	6.9	9	9	10	10	10	10
Houston Pilots M - Kinder 1	8	8	2.9	5.9	3.9	2	3.9	3.9	4.9	2	2.9	3.9	5.9	6.9	6.9	6.9	6.9	6.9	9	9	10	10	10	10
Houston Pilots L - Greens Bayou	8	8	2.5	4.9	3.9	2.5	3.9	3.9	4.9	2	2.9	3.9	5.9	5.9	6.9	6.9	6.9	6.9	6.9	7.9	9	10	10	10
Houston Pilots K - Shell Crude	8	8	2.5	4.9	3.9	2.5	3.9	3.9	4.9	2.9	2.9	3.9	4.9	5.9	6.9	6.9	6.9	6.9	6.9	7.9	9	10	10	10
Houston Pilots J - Lynchburg Ferries	10	8	2.5	2.9	3.9	2.5	3.9	3.9	4.9	2.9	2.9	3.9	5.9	5.9	6.9	6.9	6.9	6.9	6.9	9	9	10	10	10
Houston Pilots I - Exxon 3	10	8	2	2.9	4.9	2.9	3.9	3.9	4.9	3.9	2.9	3.9	4.9	5.9	6.9	6.9	6.9	6.9	6.9	7.9	9	10	10	10
Houston Pilots H - Morgans Point	9	2.5	2	2.9	4.9	2.9	3.9	3.9	4.9	3.9	2.9	3.9	4.9	5.9	6.9	6.9	6.9	6.9	6.9	7.9	7.9	10	10	10
Houston Pilots G - 75/76	6.9	2.5	1.1	2.5	4.9	4.9	2	1.6	4.9	5.9	2.9	3.9	4.9	5.9	5.9	5.9	5.9	5.9	5.9	5.9	6.9	6.9	6.9	9
Houston Pilots F - 63/64	4.9	2.5	1.1	2.5	4.9	4.9	2	1.6	4.9	5.9	2.9	2.5	3.9	5.9	5.9	5.9	5.9	5.9	5.9	5.9	5.9	6.9	6.9	9
Houston Pilots E - 51/52	2.9	2.5	1.1	4.9	4.9	4.9	3.9	3.9	4.9	5.9	3.9	5.9	4.9	5.9	4.9	5.9	5.9	4.9	5.9	5.9	5.9	5.9	6.9	9
Houston Pilots D - 37/38	2.9	2.5	1.1	4.9	4.9	4.9	3.9	3.9	4.9	5.9	3.9	5.9	4.9	5.9	4.9	5.9	5.9	4.9	4.9	4.9	5.9	5.9	6.9	9
Houston Pilots C - 25/26	2.9	2.5	2.9	4.9	4.9	4.9	3.9	3.9	4.9	5.9	3.9	5.9	4.9	5.9	4.9	5.9	4.9	4.9	4.9	4.9	4.9	4.9	6.9	9
Houston Pilots B - 11/12	2.9	2.5	3.9	4.9	4.9	4.9	3.9	3.9	4.9	5.9	5.9	5.9	4.9	5.9	4.9	5.9	4.9	4.9	4.9	4.9	4.9	4.9	6.9	9
Houston Pilots A - 1 & 2 Bravo	4.9	3.9	4.9	4.9	4.9	4.9	3.9	3.9	4.9	5.9	5.9	5.9	4.9	5.9	4.9	5.9	4.9	4.9	4.9	4.9	4.9	4.9	4.9	9

**NOTE: This is automated data that may/may not agree with the official BAM thinking that's found on the daily slides or special visibility report slides. This data should be used as a guide only**



# Houston Pilots Wind Chart



**Sustained wind 10 Knots**  
**Gusts 15 Knots**  
**Wind from the SE**

**Example**

10  
15  
↙

Wind	Wed 2 am	Wed 3 am	Wed 4 am	Wed 5 am	Wed 6 am	Wed 7 am	Wed 8 am	Wed 9 am	Wed 10 am	Wed 11 am	Wed 12 pm	Wed 1 pm	Wed 2 pm	Wed 3 pm	Wed 4 pm	Wed 5 pm	Wed 6 pm	Wed 7 pm	Wed 8 pm	Wed 9 pm	Wed 10 pm	Wed 11 pm	Thu 12 am	Thu 1 am
Houston Pilots N - 610 Bridge	6 12 ←	6 13 ←	6 14 ↖	7 15 ↑	8 17 ↑	8 18 ↑	9 21 ↑	10 22 ↑	10 22 ↗	12 23 ↗	13 24 →	13 24 →	12 22 ↘	10 21 ↘	9 18 ↘	8 17 ↘	7 14 ↘	6 12 ↘	6 12 ↓	6 12 ↓	6 12 ↓	7 14 ↓	8 15 ↓	8 17 ↓
Houston Pilots M - Kinder 1	6 12 ←	6 13 ←	6 14 ↖	7 15 ↑	8 17 ↑	8 18 ↑	9 21 ↑	10 22 ↑	10 22 ↗	12 23 ↗	13 24 →	13 24 →	12 22 ↘	10 21 ↘	9 18 ↘	8 17 ↘	7 14 ↘	6 12 ↘	6 12 ↓	6 12 ↓	6 12 ↓	7 14 ↓	8 15 ↓	8 17 ↓
Houston Pilots L - Greens Bayou	6 12 ←	6 13 ←	6 14 ↖	7 15 ↑	8 16 ↑	8 18 ↑	9 20 ↑	10 21 ↑	10 22 ↗	12 23 ↗	13 24 →	13 24 →	12 22 ↘	10 21 ↘	9 18 ↘	8 16 ↘	7 14 ↘	6 12 ↘	6 12 ↓	6 12 ↓	6 12 ↓	7 14 ↓	8 15 ↓	8 17 ↓
Houston Pilots K - Shell Crude	6 12 ←	6 13 ←	6 14 ↖	7 15 ↑	8 16 ↑	8 18 ↑	9 20 ↑	10 21 ↑	10 22 ↗	12 23 ↗	13 24 →	13 23 →	12 22 ↘	10 21 ↘	9 18 ↘	8 17 ↘	7 14 ↘	6 12 ↘	6 12 ↓	6 12 ↓	6 12 ↓	7 14 ↓	8 15 ↓	8 17 ↓
Houston Pilots J - Lynchburg Ferries	6 12 ←	6 13 ←	6 14 ↖	6 15 ↑	7 16 ↑	8 17 ↑	9 20 ↑	10 21 ↑	10 22 ↗	12 23 ↗	13 23 ↗	13 23 →	12 22 ↘	10 20 ↘	9 17 ↘	8 16 ↘	7 14 ↘	6 10 ↘	6 10 ↓	6 10 ↓	6 12 ↓	6 13 ↓	7 15 ↓	8 16 ↓
Houston Pilots I - Exxon 3	8 13 ←	8 14 ←	9 15 ↖	10 15 ↑	10 17 ↑	12 18 ↑	13 20 ↑	13 21 ↑	13 21 ↗	14 23 ↗	14 23 ↗	14 23 →	13 22 ↘	13 21 ↘	10 18 ↘	10 17 ↘	9 15 ↘	8 12 ↘	8 12 ↓	8 12 ↓	8 13 ↓	9 14 ↓	10 16 ↓	12 17 ↓
Houston Pilots H - Morgans Point	8 13 ←	8 14 ←	8 14 ↖	9 15 ↑	10 16 ↑	12 18 ↑	13 20 ↑	13 21 ↑	13 21 ↗	13 23 ↗	14 23 ↗	14 23 →	13 22 ↘	13 21 ↘	10 18 ↘	10 17 ↘	8 14 ↘	7 12 ↘	7 12 ↓	8 12 ↓	8 12 ↓	9 14 ↓	10 15 ↓	12 17 ↓
Houston Pilots G - 75/76	9 14 ←	9 15 ←	10 15 ↖	10 17 ↑	13 18 ↑	13 21 ↑	14 22 ↑	15 22 ↑	15 23 ↗	15 24 ↗	15 25 →	15 24 →	14 23 ↘	13 22 ↘	12 20 ↘	10 17 ↘	9 15 ↘	8 12 ↘	8 12 ↓	8 12 ↓	8 13 ↓	10 15 ↓	12 16 ↓	13 17 ↓
Houston Pilots F - 63/64	8 14 ←	9 15 ←	10 15 ↖	12 17 ↑	13 18 ↑	13 21 ↑	14 22 ↑	15 22 ↑	15 22 ↗	15 23 ↗	15 24 →	15 24 →	14 23 ↘	13 22 ↘	12 20 ↘	10 17 ↘	9 15 ↘	8 12 ↘	8 12 ↓	8 12 ↓	8 13 ↓	10 14 ↓	12 16 ↓	13 17 ↓
Houston Pilots E - 51/52	9 14 ←	9 15 ←	10 15 ↖	12 17 ↑	13 18 ↑	13 21 ↑	14 22 ↑	14 22 ↑	14 23 ↗	15 24 ↗	15 25 →	15 24 →	14 23 ↘	13 22 ↘	12 20 ↘	10 17 ↘	9 15 ↘	8 12 ↘	8 12 ↓	8 12 ↓	8 13 ↓	9 14 ↓	10 16 ↓	13 17 ↓
Houston Pilots D - 37/38	9 14 ←	10 15 ←	10 16 ↖	12 17 ↑	13 18 ↑	13 21 ↑	14 22 ↑	14 22 ↑	14 23 ↗	15 24 ↗	15 24 →	15 24 →	14 23 ↘	13 22 ↘	12 20 ↘	10 17 ↘	9 15 ↘	8 12 ↘	8 12 ↓	8 12 ↓	8 13 ↓	9 14 ↓	10 16 ↓	13 17 ↓
Houston Pilots C - 25/26	9 15 ←	10 15 ←	10 16 ↖	12 18 ↑	13 20 ↑	13 21 ↑	13 21 ↑	14 22 ↑	14 22 ↗	15 23 ↗	15 24 →	15 24 →	14 22 ↘	13 22 ↘	13 20 ↘	10 17 ↘	9 15 ↘	8 13 ↘	8 12 ↓	8 12 ↓	8 13 ↓	9 14 ↓	10 16 ↓	12 17 ↓
Houston Pilots B - 11/12	8 15 ←	9 15 ←	10 17 ↖	10 18 ↑	12 20 ↑	13 21 ↑	13 21 ↑	13 21 ↑	13 22 ↗	14 22 ↗	15 23 →	15 23 →	14 22 ↘	13 21 ↘	12 18 ↘	10 17 ↘	9 15 ↘	8 13 ↘	8 12 ↓	7 12 ↓	8 13 ↓	8 14 ↓	9 16 ↓	10 17 ↓
Houston Pilots A - 1 & 2 Bravo	10 16 ←	12 17 ←	13 20 ↖	13 20 ↑	14 21 ↑	14 22 ↑	15 22 ↑	15 23 ↑	15 23 ↗	15 24 ↗	15 25 →	15 24 →	15 23 ↘	14 22 ↘	13 20 ↘	12 17 ↘	10 16 ↘	9 14 ↘	9 14 ↓	9 14 ↓	9 14 ↓	10 15 ↓	12 17 ↓	13 17 ↓

**NOTE: This is automated data that may/may not agree with the official BAM thinking that's found on the daily slides. This data should be used as a guide only.**

# Houston Pilots: WED. 2/12/2025



## Forecast Discussion

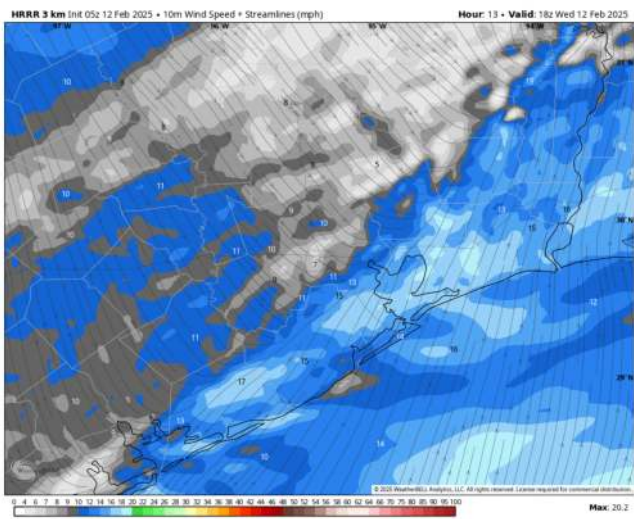
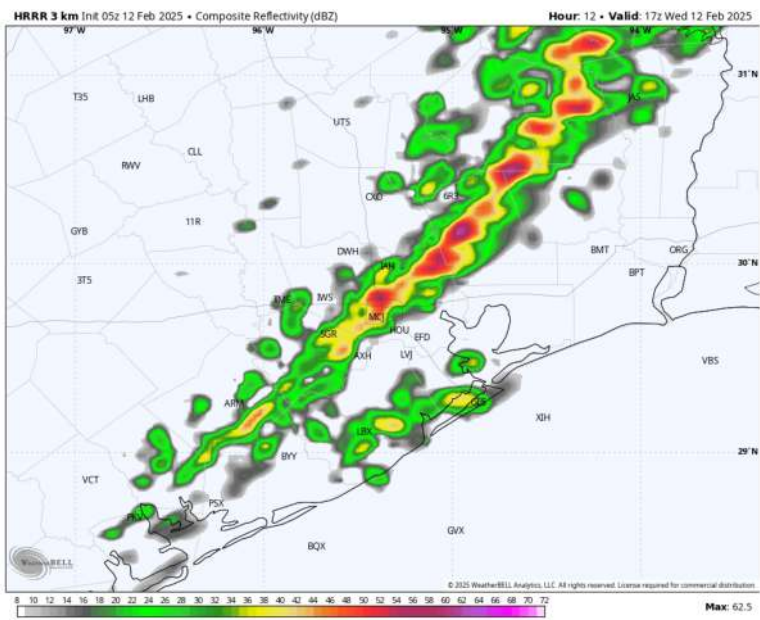
**Precip:** Two rounds of storms will be possible. The first round from 5AM – 9AM and the second from 11AM – 3PM. Chances at 70% for each! **A few strong to severe storms may be possible, with 40-50 kts wind gusts the main concern for BOTH rounds.**

**Wind:** Winds will quickly change out of the SE by 6AM to be out of S/SW by 8AM and through ~4 PM. Winds will then gradually shift to out of the N/NE by 8 PM. **N of Morgan's Point:** Winds will be at 3 - 8 kts, increasing to 9 – 14 kts from 6AM to 2PM. **S of Morgan's Point:** Winds will be at 11 – 16 kts through 5 PM, decreasing to 5 -10 kts after that time. **Non-thunderstorm wind gusts may reach 20 – 25 kts from 6AM to 4PM for all Stations.**

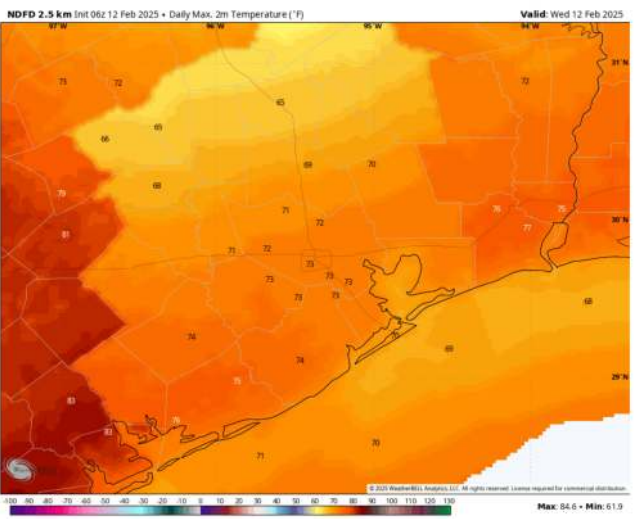
**High Temps:** **N of Morgan's Point:** Low 70s F. **S of Morgan's Point:** High 60s to low 70s F.

**Visibility:** Watching for very patchy sea fog risks for Stations S of Morgan's Point after 2AM and through ~6AM this AM.

## Precip Image: 11 AM CT



Wind Speed:  
12 PM CT



High Temps  
Today



# Houston Pilots: THU. 2/13/2025



## Forecast Discussion

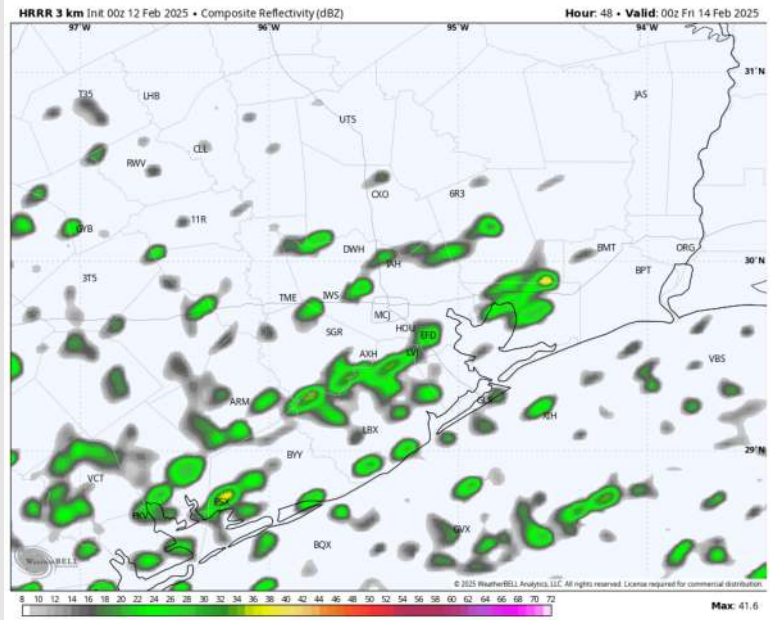
**Precip:** Favoring isolated (20%) showers from 4PM to 11PM for all Stations.

**Wind:** Winds will be out of the N/NE throughout the day. **N of Morgan's Point:** Winds will be at 7 - 12 kts throughout the day. **S of Morgan's Point:** Winds will be at 15 - 20 kts for Thursday. **Wind gusts of 20 - 25 kts will be in play for all Station from 5AM - 3PM, with a few gusts near 30 kts possible S. of 11/12.**

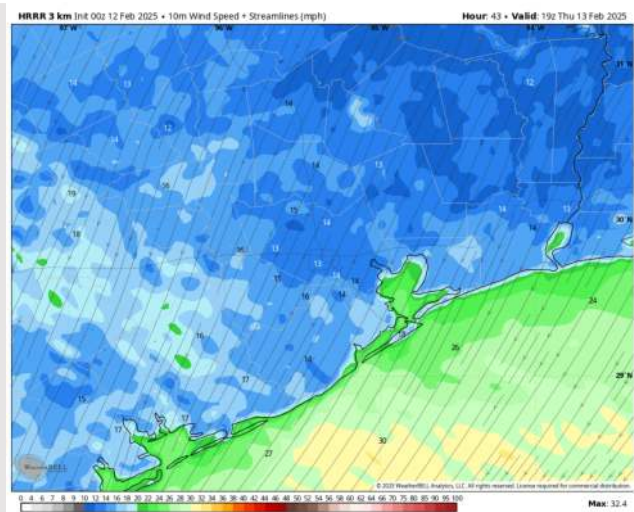
**High Temps:** **N of Morgan's Point:** High 50s F. **S of Morgan's Point:** High 50s F to near 60 F.

**Visibility:** No fog concerns for Thursday.

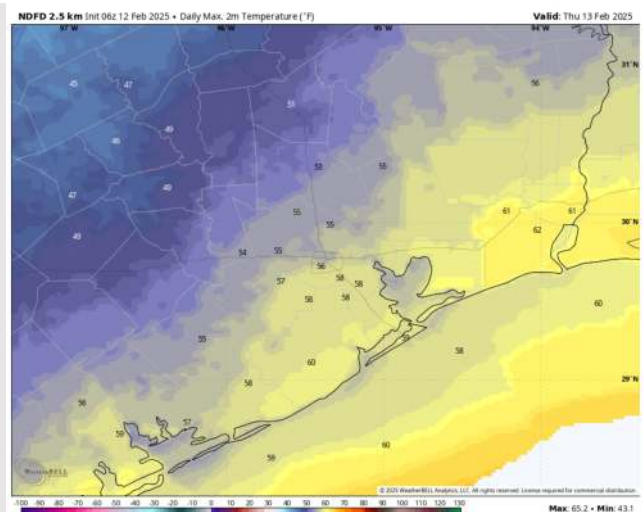
## Precip Image: 6 PM CT



Wind Speed:  
1 PM CT



High Temps  
Thursday



# Houston Pilots: FRI. 2/14/2025



## Forecast Discussion

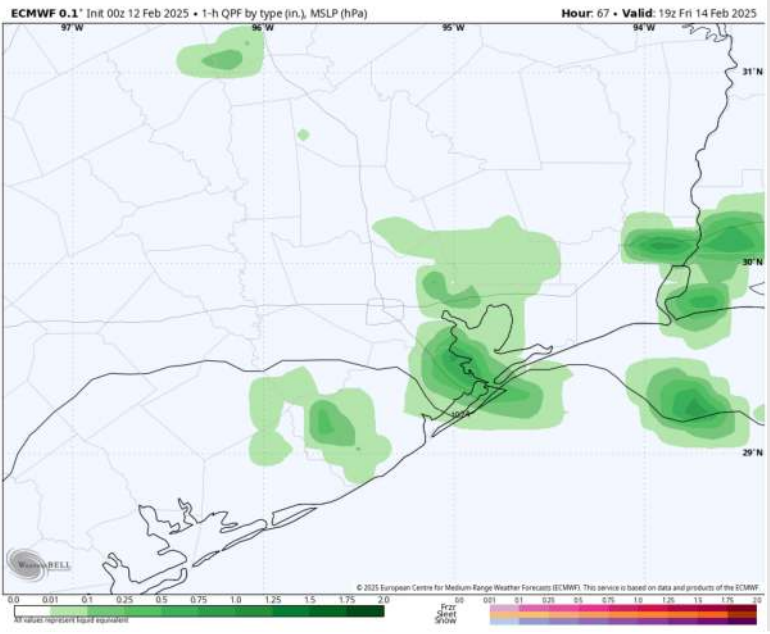
**Precip:** Favoring scattered showers and a few storms (40%) to be possible from 11AM – 8PM.

**Wind:** Winds will quickly veer from out of the NE to the ENE / E from 12AM – 4AM. Winds will remain out of the ENE / E for the remainder of Friday. **N of Morgan's Point:** Winds will be at 5 – 10 kts for the entire day. **S of Morgan's Point:** Winds will be at 10 – 15 kts for all of Friday, with **A few gusts of up to 25 kts for stations S of Morgan's Point from 10AM – 5PM.**

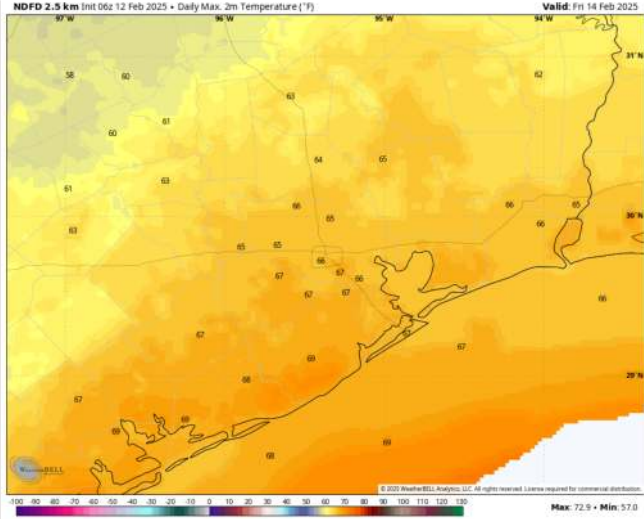
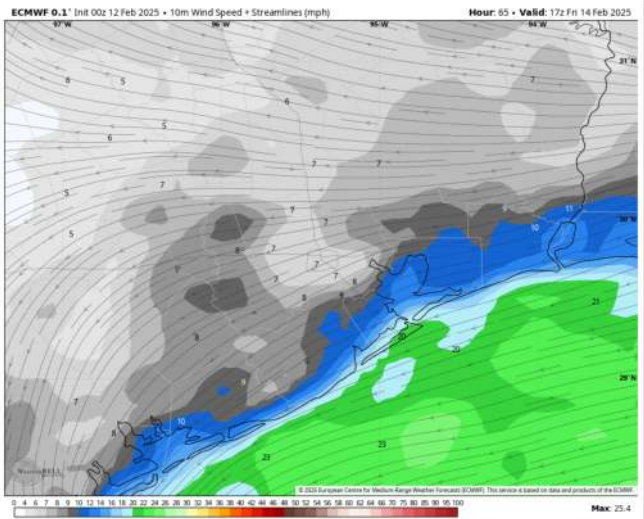
**High Temps:** **N of Morgan's Point:** Mid 60s F. **S of Morgan's Point:** Mid to upper 60s F.

**Visibility:** No visibility concerns for Friday.

## Precip Image: 1 PM CT



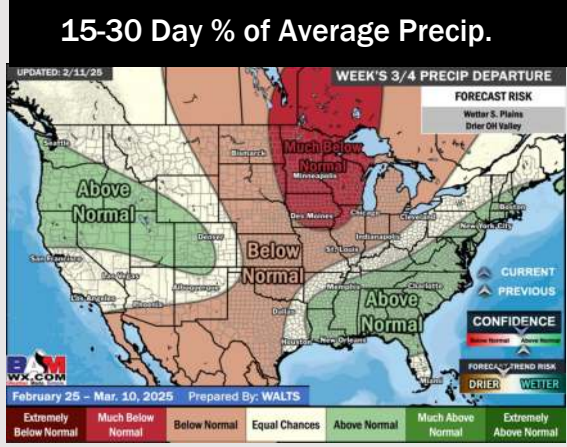
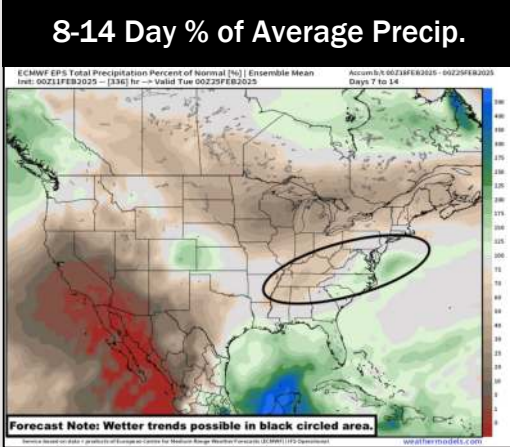
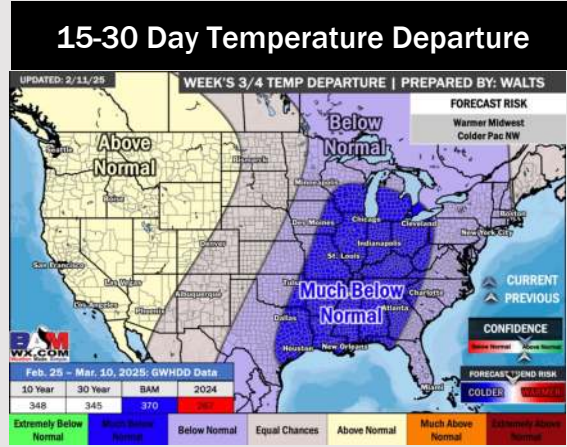
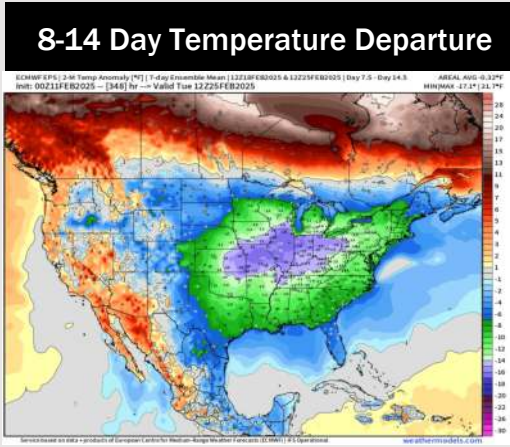
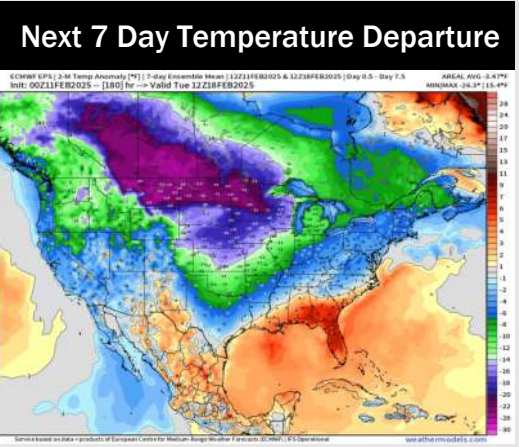
Wind Speed  
11 AM CT



High Temps  
Friday



# Houston Pilots: 2/12/25



- Temps are expected to be slightly above normal for the week ahead. Scattered rain chances are favored through the week.
- Well below normal temps and near normal rainfall are expected for week 2.
- Much below normal temperatures and near normal precipitation chances are expected for the weeks 3/4 timeframe.