

Houston Pilots Forecast Package



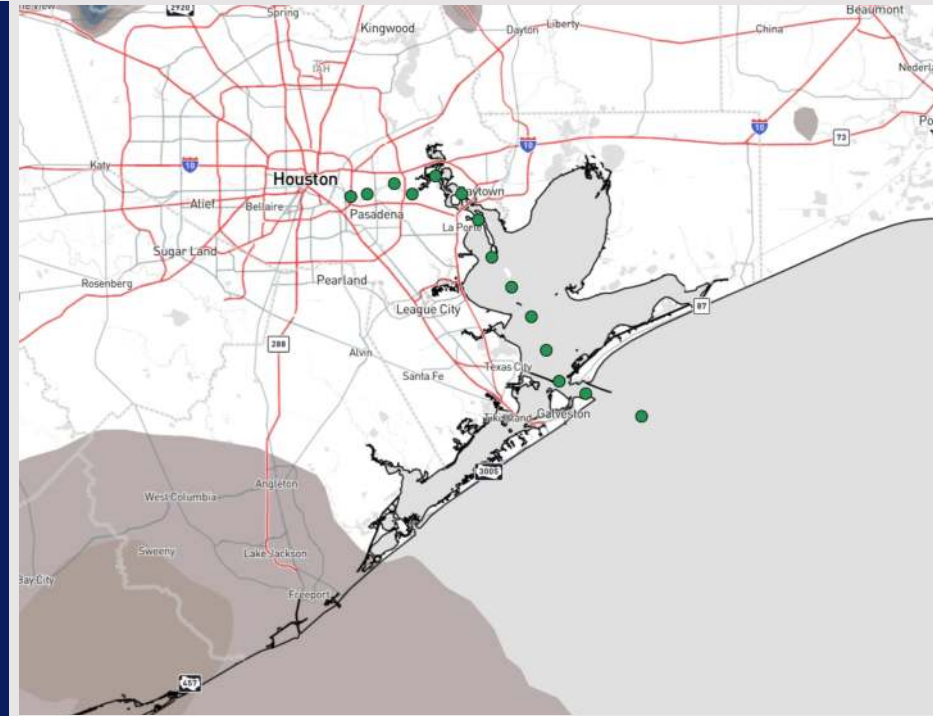
Updated: 8:10 PM CT

Tuesday, February 11, 2025

Forecaster: John Kemper

Weather Headlines

- **Watching for patchy sea-fog to return briefly late tonight and into WED AM ahead of a front. See visibility slide for more details.**
- **Storms, some strong, will be possible on Wednesday.**
- **Gusty winds are in store for Wednesday and Thursday, with gusts of 20 – 25 kts possible.**



Current Radar: 8:10 PM CT

As always, please do not hesitate to reach out to us with any forecast questions at **(317)-560-8122**. Press **1** for forecast questions.

You can also access real-time forecast updates and 24/7 meteorological chat assistance on your [Clarity](#) app. Click [here](#) for login assistance.



Houston Pilots Visibility Report

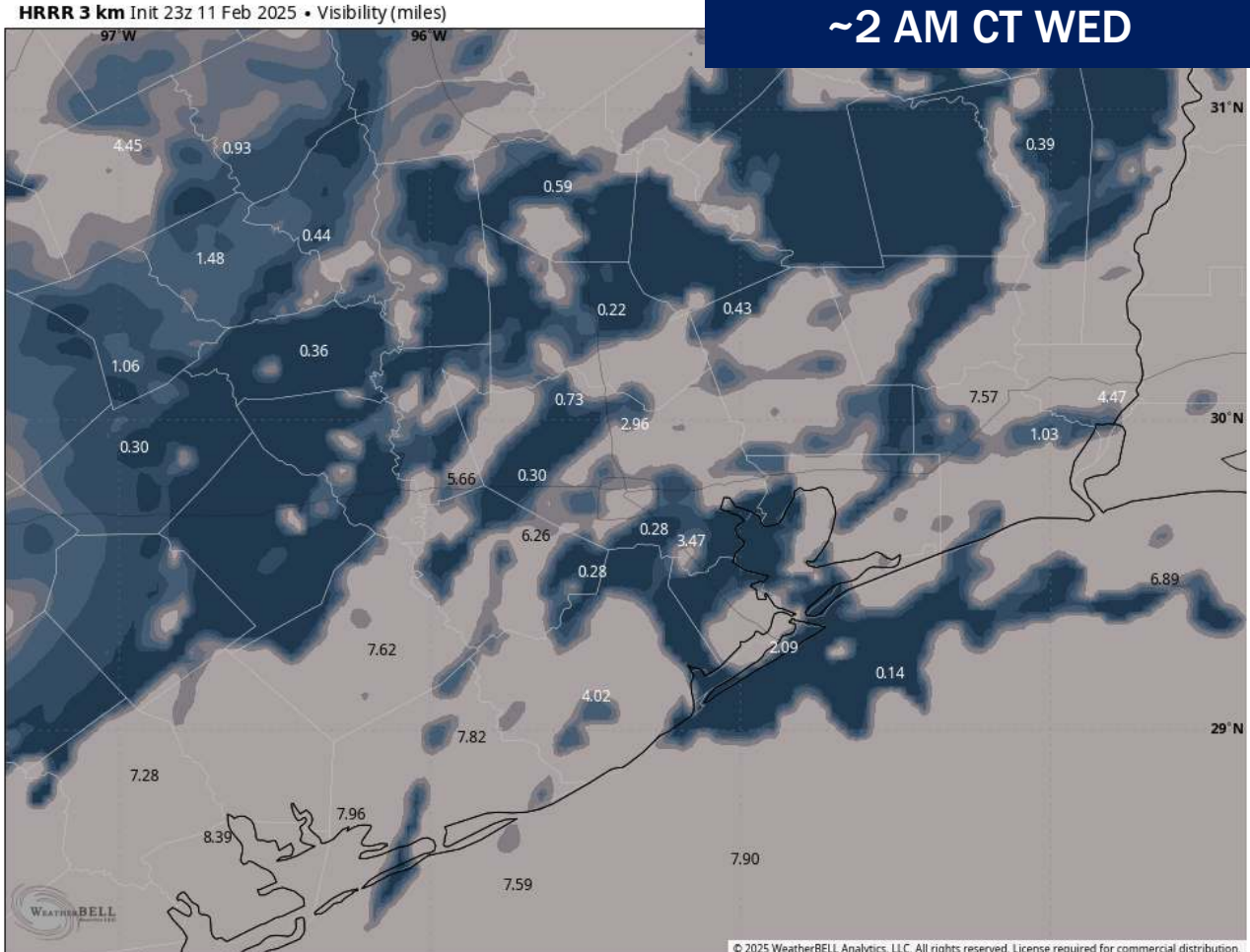


TIMEFRAME DISCUSSED	THREAT
12 AM – 6 AM WED	Low



Watching for a low-end risk for brief instances of patchy fog, which can reduce visibility for **all Stations** to less than 2 miles from 12AM – 6AM WED. A few pockets of less than 0.5-mile visibility will be possible but likely limited to stations S of Morgan’s Point only.

~2 AM CT WED



This window of opportunity will be brief and patchy due to unfavorable winds until midnight and a passing front / light rain chances beginning to work into the area after 6AM.

Confidence remains low given uncertainties on the timing of the front.

Houston Pilots Extended Range Visibility Report



Friday 2/14/25

No fog concerns for Friday.

Forecast Confidence



Saturday 2/15/25

No fog concerns for Saturday.

Forecast Confidence



Sunday 2/16/25

No fog concerns for Sunday.

Forecast Confidence



Chance for Fog

Friday AM	Unlikely
Friday PM	Unlikely
Saturday AM	Unlikely
Saturday PM	Unlikely
Sunday AM	Unlikely
Sunday PM	Unlikely

Houston Pilots Visibility Chart (miles)



Forecast Confidence



Visibility	Tue 2 pm	Tue 3 pm	Tue 4 pm	Tue 5 pm	Tue 6 pm	Tue 7 pm	Tue 8 pm	Tue 9 pm	Tue 10 pm	Tue 11 pm	Wed 12 am	Wed 1 am	Wed 2 am	Wed 3 am	Wed 4 am	Wed 5 am	Wed 6 am	Wed 7 am	Wed 8 am	Wed 9 am	Wed 10 am	Wed 11 am	Wed 12 pm	Wed 1 pm
Houston Pilots N - 610 Bridge	2.5	2.9	3.9	3.9	3.9	4.9	4.9	4.9	4.9	3.9	3.9	3.9	3.9	3.9	3.9	3.9	3.9	3.9	2.5	1.6	2	2.9	3.9	4.9
Houston Pilots M - Kinder 1	2.5	2.9	3.9	3.9	3.9	4.9	4.9	4.9	4.9	3.9	3.9	3.9	3.9	3.9	3.9	3.9	3.9	3.9	2.5	1.6	2	2.9	3.9	4.9
Houston Pilots L - Greens Bayou	2.9	2.9	3.9	3.9	3.9	4.9	4.9	4.9	4.9	3.9	3.9	3.9	3.9	2.9	2.5	2.9	2.9	2.9	1.6	0.7	1.6	2.9	3.9	4.9
Houston Pilots K - Shell Crude	2.9	2.9	3.9	3.9	3.9	4.9	4.9	4.9	4.9	3.9	3.9	3.9	3.9	2.5	2.5	2.9	2.9	2.5	1.6	0.5	1.1	2.9	3.9	4.9
Houston Pilots J - Lynchburg Ferries	2.9	2.9	3.9	3.9	3.9	4.9	4.9	4.9	4.9	3.9	3.9	3.9	3.9	2.5	2	2.5	2.9	2.5	1.6	0.2	1.6	2.9	2.9	4.9
Houston Pilots I - Exxon 3	2.9	2.9	3.9	3.9	3.9	4.9	4.9	4.9	4.9	3.9	3.9	3.9	2.5	1.6	0.5	0.7	0.7	0.5	0.7	0.2	0.5	2	2.9	3.9
Houston Pilots H - Morgans Point	2.9	2.9	3.9	3.9	4.9	4.9	4.9	4.9	4.9	3.9	3.9	3.9	2.5	1.6	0.3	0.5	0.5	0.5	0.5	0.2	0.3	2	2.9	3.9
Houston Pilots G - 75/76	2.9	2.9	4.9	4.9	4.9	4.9	4.9	4.9	3.9	2	2.5	0.8	1.1	0.5	0.5	0.7	0.5	0.5	0.5	0.2	0.3	2	2.9	9
Houston Pilots F - 63/64	3.9	2.9	4.9	4.9	4.9	4.9	4.9	4.9	2.9	2	2.5	0.8	1.1	0.5	0.5	0.7	0.5	0.5	0.5	0.2	0.3	2	2.9	9
Houston Pilots E - 51/52	3.9	2	4.9	4.9	4.9	4.9	4.9	4.9	4.9	3.9	3.9	1.1	1.1	0.5	0.5	0.7	0.5	0.5	0.5	0.2	0.3	2	2.9	9
Houston Pilots D - 37/38	3.9	2	4.9	4.9	4.9	4.9	4.9	4.9	4.9	4.9	3.9	3.9	1.1	2	0.5	0.7	0.5	0.5	0.5	0.2	0.3	2	2.9	8
Houston Pilots C - 25/26	3.9	2.9	4.9	4.9	4.9	4.9	4.9	5.9	4.9	4.9	3.9	3.9	1.1	2	0.5	0.7	0.5	0.7	0.5	0.2	0.3	2	2.9	8
Houston Pilots B - 11/12	4.9	2.9	4.9	4.9	5.9	4.9	4.9	5.9	5.9	4.9	3.9	3.9	1.1	2	0.5	0.5	0.7	0.7	0.5	0.2	0.3	2	2.9	7
Houston Pilots A - 1 & 2 Bravo	4.9	4.9	4.9	5.9	5.9	5.9	6.9	5.9	5.9	4.9	4.9	2.9	1.1	2	0.5	0.5	0.7	0.7	0.7	0.2	0.3	2.5	2.9	7

NOTE: This is automated data that may/may not agree with the official BAM thinking that's found on the daily slides or special visibility report slides. This data should be used as a guide only

Houston Pilots Wind Chart



Sustained wind 10 Knots
Gusts 15 Knots
Wind from the SE

Example

10
15
↙

Wind	Tue 2 pm	Tue 3 pm	Tue 4 pm	Tue 5 pm	Tue 6 pm	Tue 7 pm	Tue 8 pm	Tue 9 pm	Tue 10 pm	Tue 11 pm	Wed 12 am	Wed 1 am	Wed 2 am	Wed 3 am	Wed 4 am	Wed 5 am	Wed 6 am	Wed 7 am	Wed 8 am	Wed 9 am	Wed 10 am	Wed 11 am	Wed 12 pm	Wed 1 pm
Houston Pilots N - 610 Bridge	8 18 ↓	8 17 ↓	8 16 ↓	8 15 ↓	7 14 ←	6 13 ←	6 12 ←	6 12 ←	6 12 ←	6 12 ←	6 12 ←	6 12 ←	6 13 ←	6 14 ←	6 15 ↑	7 15 ↗	8 17 ↗	8 18 ↗	9 21 ↑	10 22 ↑	10 22 ↑	12 24 ↗	13 25 ↑	13 24 ↗
Houston Pilots M - Kinder 1	8 18 ↓	8 17 ↓	8 16 ↓	8 15 ↓	7 14 ←	6 13 ←	6 12 ←	6 12 ←	6 12 ←	6 12 ←	6 12 ←	6 12 ←	6 13 ←	6 14 ←	6 15 ↑	7 15 ↗	8 17 ↗	8 18 ↗	9 21 ↑	10 22 ↑	10 22 ↑	12 24 ↗	13 24 ↗	13 24 ↗
Houston Pilots L - Greens Bayou	9 18 ↓	8 17 ↓	8 16 ↓	8 15 ↓	7 14 ←	6 13 ←	6 12 ←	6 12 ←	6 12 ←	6 12 ←	6 12 ←	6 12 ←	6 13 ←	6 13 ←	6 15 ↑	7 15 ↗	8 17 ↗	8 18 ↗	9 20 ↑	10 21 ↑	10 22 ↑	12 23 ↗	13 24 ↗	13 24 ↗
Houston Pilots K - Shell Crude	9 18 ↓	8 17 ↓	8 16 ↓	8 15 ↓	7 14 ←	6 13 ←	6 12 ←	6 12 ←	6 12 ←	6 12 ←	6 12 ←	6 12 ←	6 13 ←	6 14 ←	6 15 ↑	7 15 ↗	8 17 ↗	8 18 ↗	9 20 ↑	10 21 ↑	10 22 ↑	12 23 ↗	13 24 ↗	13 23 ↗
Houston Pilots J - Lynchburg Ferries	9 17 ↓	8 17 ↓	8 16 ↓	8 15 ↓	7 14 ←	6 12 ←	6 12 ←	6 12 ←	6 10 ←	6 10 ←	5 10 ←	6 12 ←	6 12 ←	6 13 ←	6 14 ↑	7 15 ↗	8 16 ↗	8 17 ↗	9 20 ↑	9 21 ↑	10 21 ↑	12 23 ↗	13 24 ↗	13 23 ↗
Houston Pilots I - Exxon 3	10 18 ↓	10 17 ↓	10 17 ↓	10 16 ↓	9 15 ←	8 13 ←	8 13 ←	8 13 ←	8 13 ←	8 13 ←	8 13 ←	8 13 ←	8 13 ←	8 14 ←	9 15 ↑	10 15 ↗	10 17 ↗	12 18 ↗	13 20 ↑	13 20 ↑	13 21 ↑	14 22 ↑	14 23 ↑	14 23 ↑
Houston Pilots H - Morgans Point	10 18 ↓	10 17 ↓	10 17 ↓	10 16 ↓	9 15 ←	8 13 ←	8 13 ←	8 12 ←	8 12 ←	8 12 ←	8 12 ←	8 12 ←	8 13 ←	8 14 ←	9 15 ↑	10 15 ↗	10 16 ↗	12 17 ↗	12 18 ↗	13 20 ↑	13 20 ↑	13 22 ↑	14 23 ↑	14 23 ↑
Houston Pilots G - 75/76	10 20 ↘	10 18 ↓	10 20 ↘	10 17 ←	10 15 ←	9 14 ←	9 14 ←	8 13 ←	8 13 ←	8 13 ←	8 13 ←	8 13 ←	9 14 ←	10 15 ←	10 15 ↑	10 17 ↑	12 18 ↗	13 20 ↗	13 21 ↑	14 21 ↑	14 22 ↑	15 23 ↑	15 25 ↑	15 24 ↑
Houston Pilots F - 63/64	12 20 ↘	10 20 ↓	10 20 ↓	10 17 ←	10 15 ←	9 14 ←	8 13 ←	8 13 ←	8 13 ←	8 13 ←	8 13 ←	8 13 ←	9 14 ←	10 15 ←	10 15 ↑	10 17 ↑	12 18 ↗	13 20 ↗	13 21 ↑	14 21 ↑	14 22 ↑	15 23 ↑	15 24 ↑	15 25 ↑
Houston Pilots E - 51/52	12 20 ↗	12 18 ↓	10 18 ↓	10 17 ↓	9 15 ←	8 13 ←	8 13 ←	8 13 ←	8 13 ←	8 13 ←	8 13 ←	8 13 ←	9 14 ←	10 15 ←	10 16 ←	10 17 ↑	12 17 ↗	13 18 ↗	13 20 ↑	13 21 ↑	14 21 ↑	14 23 ↑	15 24 ↑	15 24 ↑
Houston Pilots D - 37/38	12 20 ↗	12 18 ↓	10 18 ↓	10 17 ↓	9 15 ←	8 13 ←	8 13 ←	8 13 ←	8 13 ←	8 13 ←	8 13 ←	8 13 ←	9 14 ←	10 15 ←	10 16 ←	10 17 ↑	12 18 ↗	13 18 ↗	13 20 ↑	13 21 ↑	14 22 ↑	14 23 ↑	15 24 ↑	15 24 ↑
Houston Pilots C - 25/26	12 20 ↗	12 18 ↓	10 18 ↓	10 16 ↓	9 15 ←	8 13 ←	8 13 ←	8 13 ←	8 13 ←	8 13 ←	8 13 ←	8 13 ←	9 14 ←	10 15 ←	10 16 ←	10 17 ↑	12 18 ↗	13 20 ↗	13 21 ↑	13 21 ↑	13 21 ↑	14 23 ↑	15 24 ↑	15 24 ↑
Houston Pilots B - 11/12	12 18 ↗	10 17 ↓	10 17 ↓	10 16 ↓	8 15 ←	8 13 ←	8 13 ←	8 13 ←	8 13 ←	8 13 ←	8 13 ←	8 13 ←	8 14 ←	9 15 ←	10 16 ←	10 17 ↑	12 18 ↗	12 18 ↗	12 20 ↑	13 21 ↑	13 21 ↑	14 22 ↑	15 23 ↑	15 23 ↑
Houston Pilots A - 1 & 2 Bravo	13 20 ↑	12 18 ↘	10 18 ↘	10 16 ↓	10 15 ←	9 14 ←	9 14 ←	9 14 ←	9 14 ←	9 15 ←	10 15 ←	10 16 ←	10 17 ←	10 17 ←	12 18 ↘	13 20 ↑	13 20 ↑	13 20 ↑	14 22 ↑	15 22 ↑	15 22 ↑	15 24 ↑	15 25 ↑	15 25 ↑

NOTE: This is automated data that may/may not agree with the official BAM thinking that's found on the daily slides. This data should be used as a guide only.

Houston Pilots: TUE. 2/11/2025



Forecast Discussion

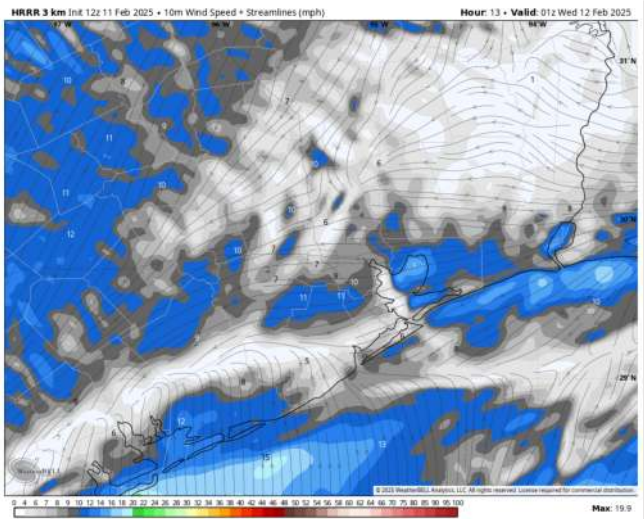
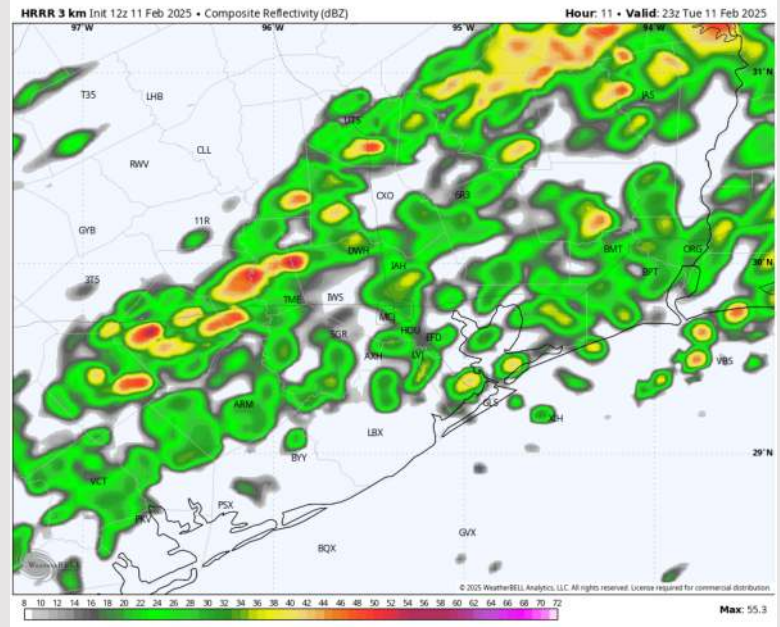
Precip: Favoring scattered showers and storms to continue through ~9PM. Main storm risks will be isolated lightning and wind gusts of 20-25 kts.

Wind: Winds will be out of the S/SE through 2 PM, quickly shifting out of the N/NE after that time due to a passing front but gradually shifting clockwise out of the S/SW by 12 AM WED. **N of Morgan's Point:** Winds will be at 5 – 10 kts throughout the day. **S of Morgan's Point:** Winds will be at 8 – 13 kts for the rest of the day.

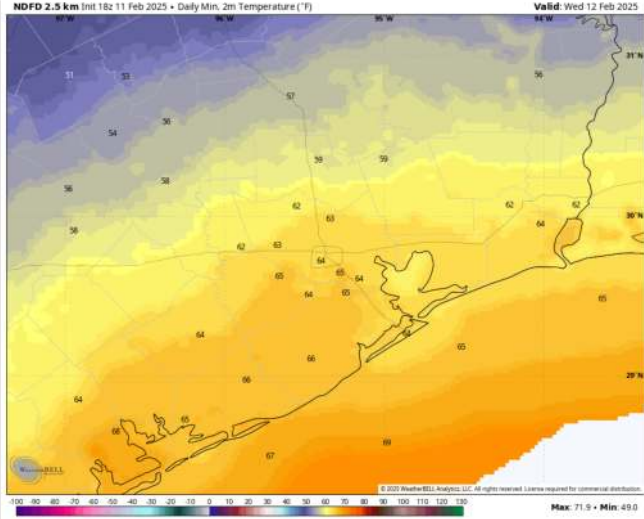
Low Temps: **N of Morgan's Point:** Mid 60s F. **S of Morgan's Point:** Low to mid 60s F.

Visibility: Favoring fog to redevelop just before midnight and into WED AM. See visibility slide for more details!

Precip Image: 5 PM CT



Wind Speed
7 PM CT



Low Temps
WED AM

Houston Pilots: WED. 2/12/2025



Forecast Discussion

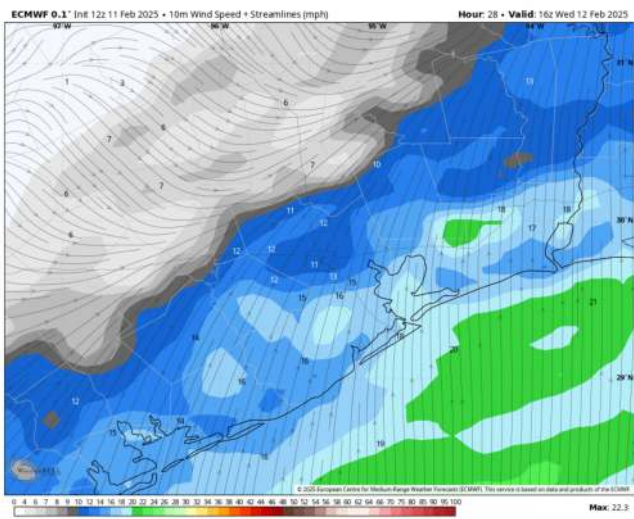
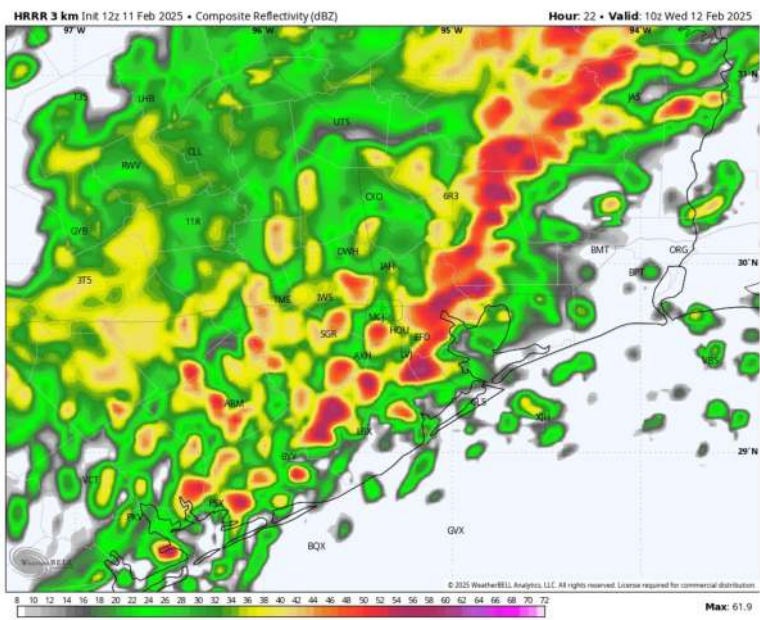
Precip: Scattered showers and storms possible for all Stations from 2 AM to 4 PM as a front passes. **A few strong to severe storms may be possible, with 40-50 kts wind gusts the main concern.**

Wind: Winds will be out of S/SW through ~4 PM, gradually shifting out of the N/NE by 8 PM. **N of Morgan's Point:** Winds will be at 3 - 8 kts, increasing to 9 - 14 kts from 7AM to 2PM. **S of Morgan's Point:** Winds will be at 11 - 16 kts through 5 PM, decreasing to 5 -10 kts after that time. **Non-thunderstorm wind gusts may reach 20 - 25 kts from 3AM to 4PM for all Stations.**

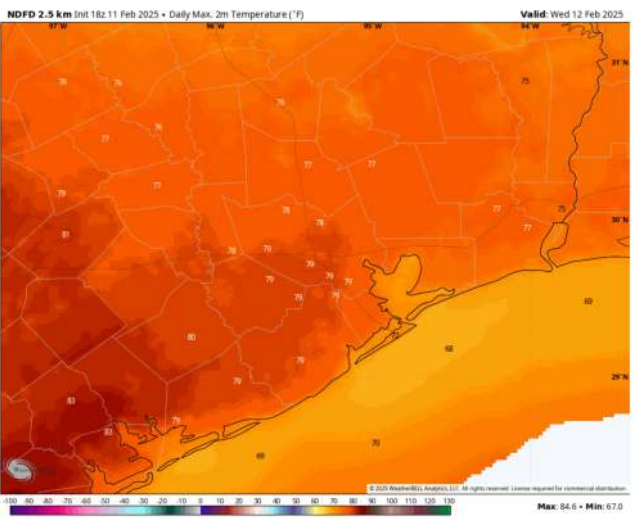
High Temps: **N of Morgan's Point:** High 70s F. **S of Morgan's Point:** High 60s to low 70s F.

Visibility: Watching sea fog risks for all Stations after Midnight and through ~6AM Wednesday morning.

Precip Image: 4 AM CT



Wind Speed:
10 AM CT



High Temps
Wednesday

Forecast Discussion

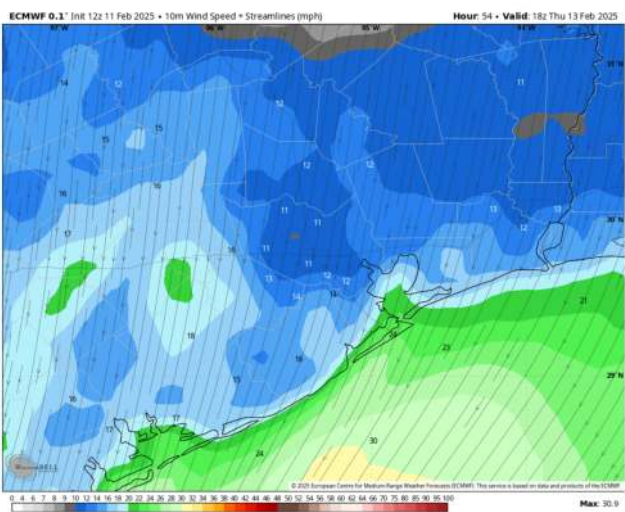
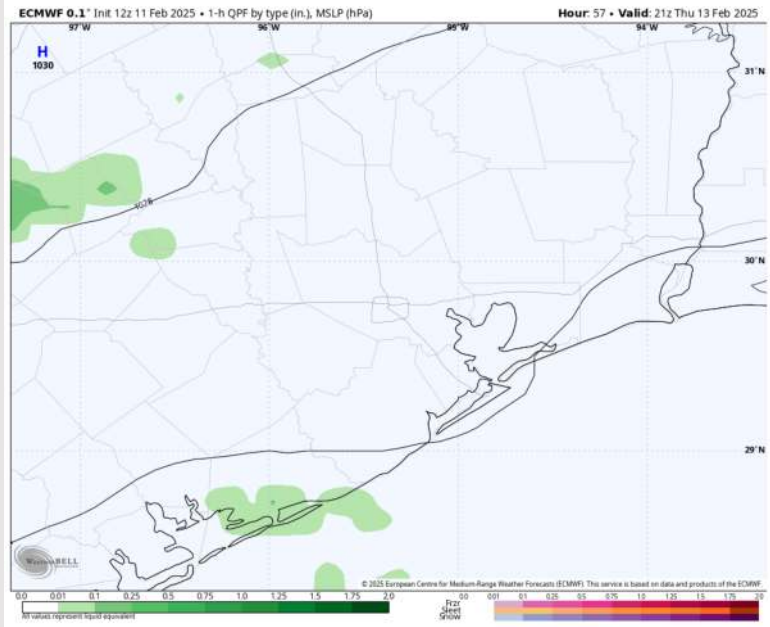
Precip: Favoring isolated (20%) showers from 2PM to 6PM for all Stations.

Wind: Winds will be out of the N/NE throughout the day. **N of Morgan's Point:** Winds will be at 7 - 12 kts throughout the day. **S of Morgan's Point:** Winds will be at 15 - 20 kts for Thursday. **Wind gusts of 20 - 25 kts will be in play for all Stations, with a few gusts near 30 kts possible S. of Morgan's Point.**

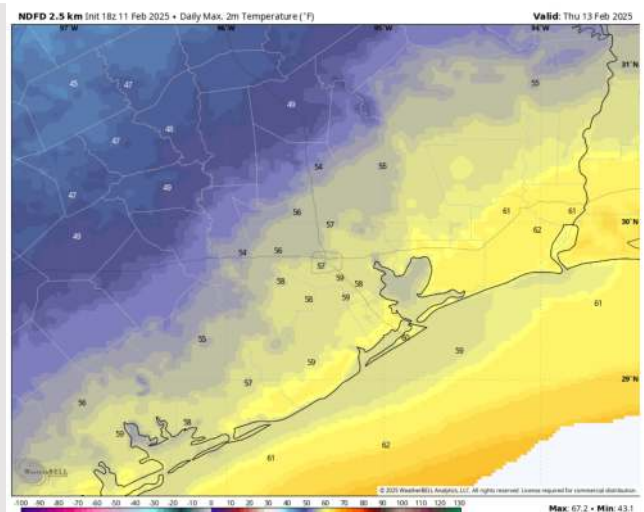
High Temps: **N of Morgan's Point:** High 50s F. **S of Morgan's Point:** High 50s F to near 60 F.

Visibility: No fog concerns for Thursday.

Precip Image: 3 PM CT



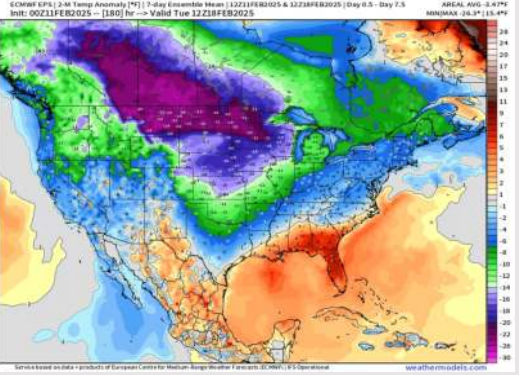
Wind Speed:
1 PM CT



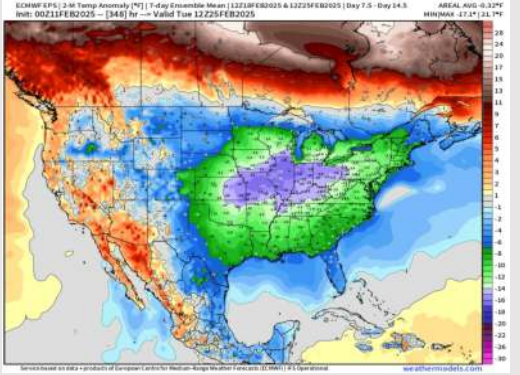
High Temps
Thursday

Houston Pilots: 2/11/25

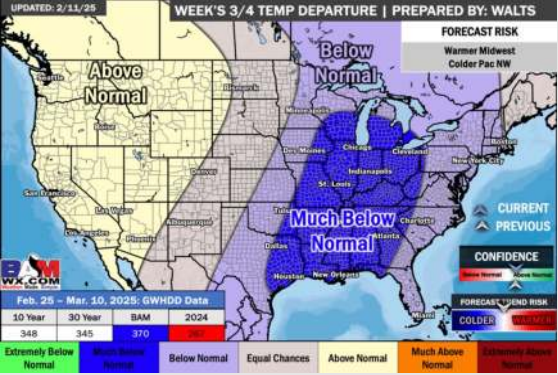
Next 7 Day Temperature Departure



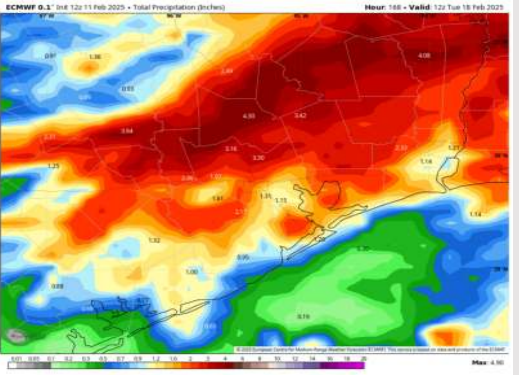
8-14 Day Temperature Departure



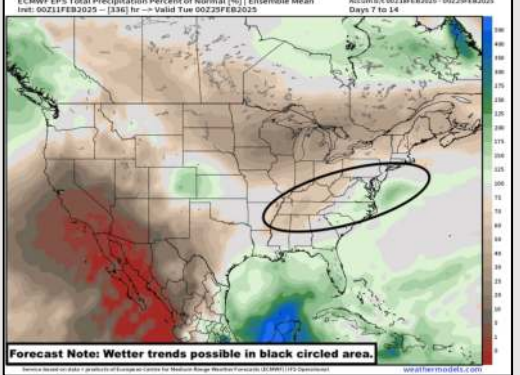
15-30 Day Temperature Departure



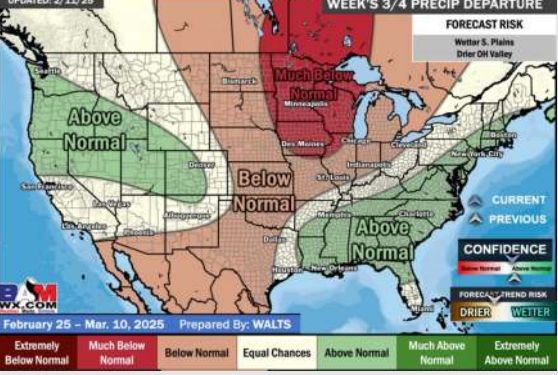
Next 7 Day Total Precipitation



8-14 Day % of Average Precip.



15-30 Day % of Average Precip.



- Temps are expected to be slightly above normal for the week ahead. Scattered rain chances are favored through the week.
- Well below normal temps and near normal rainfall are expected for week 2.
- Much below normal temperatures and near normal precipitation chances are expected for the weeks 3/4 timeframe.