

# Houston Pilots Forecast Package



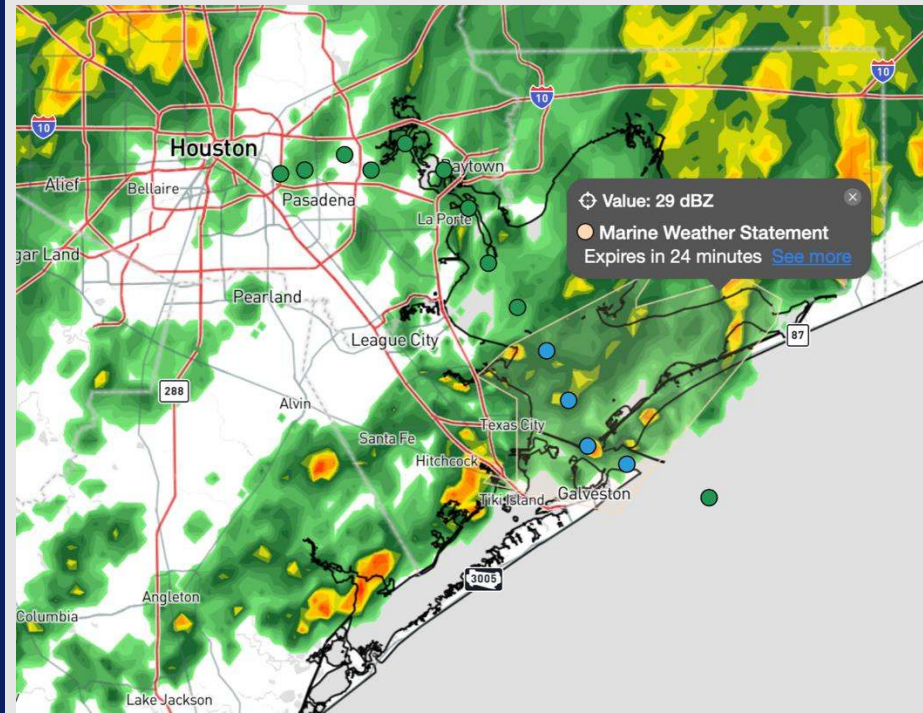
Updated: 1:25 PM CT

Tuesday, February 11, 2025

Forecaster: Hope Kleitsch

## Weather Headlines

- **Watching for patchy sea-fog to return briefly late tonight and into WED AM ahead of a front. See visibility slide for more details.**
- **Storms, some strong, will be possible on Wednesday.**
- **Gusty winds are in store for Wednesday and Thursday, with gusts of 20 – 25 kts possible.**



**Current Radar: 1:15 PM CT**

As always, please do not hesitate to reach out to us with any forecast questions at **(317)-560-8122**. Press **1** for forecast questions.

You can also access real-time forecast updates and 24/7 meteorological chat assistance on your [Clarity](#) app. Click [here](#) for login assistance.



# Houston Pilots Visibility Report

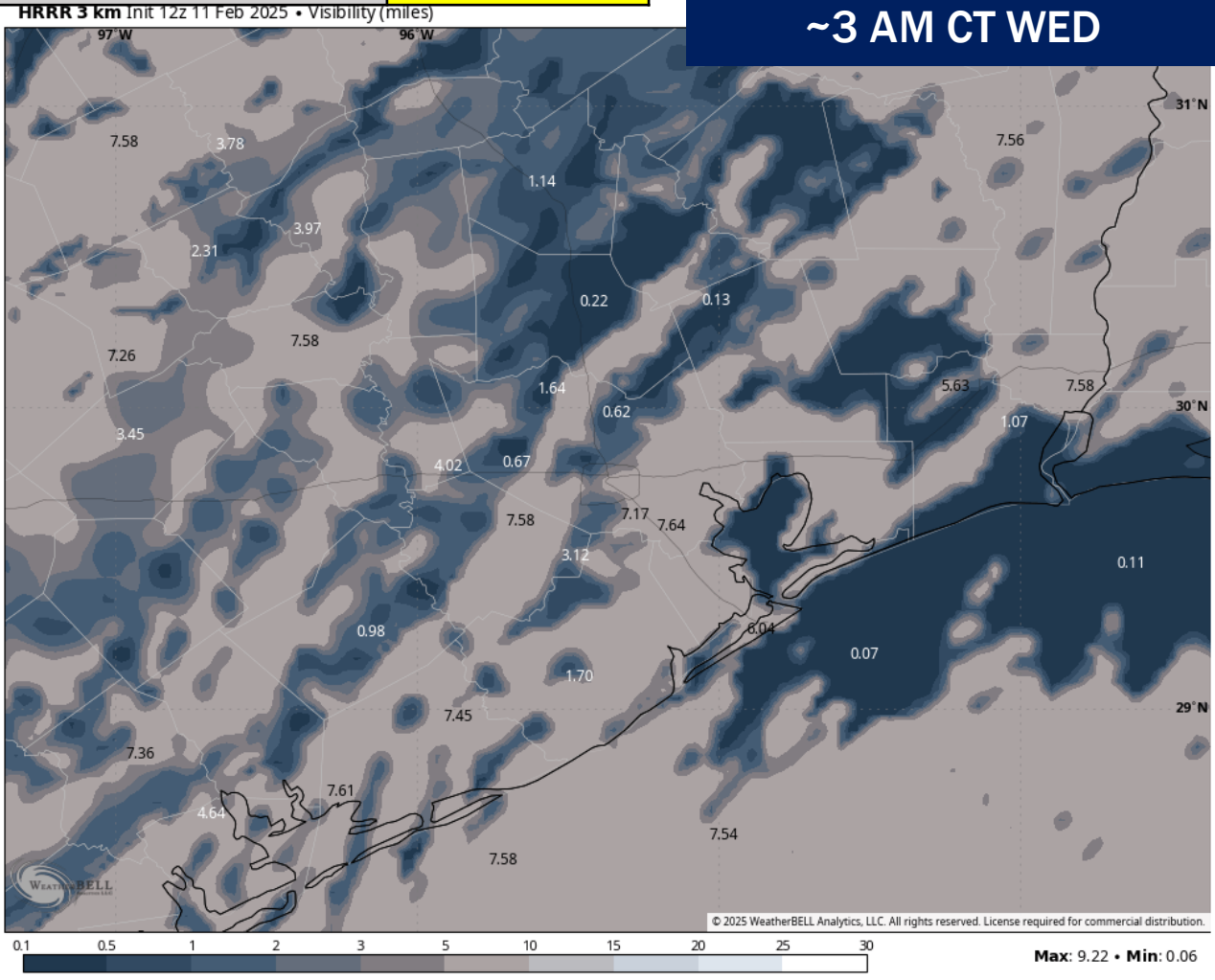


TIMEFRAME DISCUSSED	THREAT
11 PM TUE – 6 AM WED	Low - Medium

### Forecast Confidence

Above Normal Below Normal

**~3 AM CT WED**



Watching for a low-end risk for patchy fog reducing visibility **all Stations** to less than 2 miles from 11PM TUE – 6AM WED. A few pockets of less than 0.5-mile visibility will be possible.

This window of opportunity will be brief and patchy due to unfavorable winds until midnight and a passing front / light rain chances beginning to work into the area after 6AM.

Confidence remains low given uncertainties on the timing of the front.

# Houston Pilots Extended Range Visibility Report



## Friday 2/14/25

No fog concerns for Friday.

### Forecast Confidence



## Saturday 2/15/25

No fog concerns for Saturday.

### Forecast Confidence



## Sunday 2/16/25

No fog concerns for Sunday.

### Forecast Confidence



## Chance for Fog

Friday AM	Unlikely
Friday PM	Unlikely
Saturday AM	Unlikely
Saturday PM	Unlikely
Sunday AM	Unlikely
Sunday PM	Unlikely

# Houston Pilots Visibility Chart (miles)



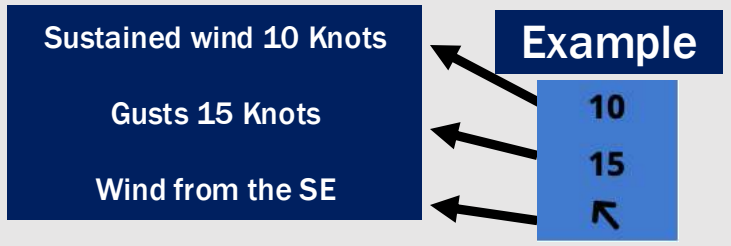
## Forecast Confidence



Visibility	Tue 2 pm	Tue 3 pm	Tue 4 pm	Tue 5 pm	Tue 6 pm	Tue 7 pm	Tue 8 pm	Tue 9 pm	Tue 10 pm	Tue 11 pm	Wed 12 am	Wed 1 am	Wed 2 am	Wed 3 am	Wed 4 am	Wed 5 am	Wed 6 am	Wed 7 am	Wed 8 am	Wed 9 am	Wed 10 am	Wed 11 am	Wed 12 pm	Wed 1 pm
Houston Pilots N - 610 Bridge	2.5	2.9	3.9	3.9	3.9	4.9	4.9	4.9	4.9	3.9	3.9	3.9	3.9	3.9	3.9	3.9	3.9	3.9	2.5	1.6	2	2.9	3.9	4.9
Houston Pilots M - Kinder 1	2.5	2.9	3.9	3.9	3.9	4.9	4.9	4.9	4.9	3.9	3.9	3.9	3.9	3.9	3.9	3.9	3.9	3.9	2.5	1.6	2	2.9	3.9	4.9
Houston Pilots L - Greens Bayou	2.9	2.9	3.9	3.9	3.9	4.9	4.9	4.9	4.9	3.9	3.9	3.9	3.9	2.9	2.5	2.9	2.9	2.9	1.6	0.7	1.6	2.9	3.9	4.9
Houston Pilots K - Shell Crude	2.9	2.9	3.9	3.9	3.9	4.9	4.9	4.9	4.9	3.9	3.9	3.9	3.9	2.5	2.5	2.9	2.9	2.5	1.6	0.5	1.1	2.9	3.9	4.9
Houston Pilots J - Lynchburg Ferries	2.9	2.9	3.9	3.9	3.9	4.9	4.9	4.9	4.9	3.9	3.9	3.9	3.9	2.5	2	2.5	2.9	2.5	1.6	0.2	1.6	2.9	2.9	4.9
Houston Pilots I - Exxon 3	2.9	2.9	3.9	3.9	3.9	4.9	4.9	4.9	4.9	3.9	3.9	3.9	2.5	1.6	0.5	0.7	0.7	0.5	0.7	0.2	0.5	2	2.9	3.9
Houston Pilots H - Morgans Point	2.9	2.9	3.9	3.9	4.9	4.9	4.9	4.9	4.9	3.9	3.9	3.9	2.5	1.6	0.3	0.5	0.5	0.5	0.5	0.2	0.3	2	2.9	3.9
Houston Pilots G - 75/76	2.9	2.9	4.9	4.9	4.9	4.9	4.9	4.9	3.9	2	2.5	0.8	1.1	0.5	0.5	0.7	0.5	0.5	0.5	0.2	0.3	2	2.9	9
Houston Pilots F - 63/64	3.9	2.9	4.9	4.9	4.9	4.9	4.9	4.9	2.9	2	2.5	0.8	1.1	0.5	0.5	0.7	0.5	0.5	0.5	0.2	0.3	2	2.9	9
Houston Pilots E - 51/52	3.9	2	4.9	4.9	4.9	4.9	4.9	4.9	4.9	3.9	3.9	1.1	1.1	0.5	0.5	0.7	0.5	0.5	0.5	0.2	0.3	2	2.9	9
Houston Pilots D - 37/38	3.9	2	4.9	4.9	4.9	4.9	4.9	4.9	4.9	4.9	3.9	3.9	1.1	2	0.5	0.7	0.5	0.5	0.5	0.2	0.3	2	2.9	8
Houston Pilots C - 25/26	3.9	2.9	4.9	4.9	4.9	4.9	4.9	5.9	4.9	4.9	3.9	3.9	1.1	2	0.5	0.7	0.5	0.7	0.5	0.2	0.3	2	2.9	8
Houston Pilots B - 11/12	4.9	2.9	4.9	4.9	5.9	4.9	4.9	5.9	5.9	4.9	3.9	3.9	1.1	2	0.5	0.5	0.7	0.7	0.5	0.2	0.3	2	2.9	7
Houston Pilots A - 1 & 2 Bravo	4.9	4.9	4.9	5.9	5.9	5.9	6.9	5.9	5.9	4.9	4.9	2.9	1.1	2	0.5	0.5	0.7	0.7	0.7	0.2	0.3	2.5	2.9	7

**NOTE: This is automated data that may/may not agree with the official BAM thinking that's found on the daily slides or special visibility report slides. This data should be used as a guide only**

# Houston Pilots Wind Chart



Wind	Tue 2 pm	Tue 3 pm	Tue 4 pm	Tue 5 pm	Tue 6 pm	Tue 7 pm	Tue 8 pm	Tue 9 pm	Tue 10 pm	Tue 11 pm	Wed 12 am	Wed 1 am	Wed 2 am	Wed 3 am	Wed 4 am	Wed 5 am	Wed 6 am	Wed 7 am	Wed 8 am	Wed 9 am	Wed 10 am	Wed 11 am	Wed 12 pm	Wed 1 pm
Houston Pilots N - 610 Bridge	8 18 ↓	8 17 ↓	8 16 ↓	8 15 ←	7 14 ←	6 13 ←	6 12 ←	6 12 ←	6 12 ←	6 12 ←	6 12 ←	6 12 ←	6 13 ←	6 14 ←	6 15 ↑	7 15 ↗	8 17 ↗	8 18 ↗	9 21 ↑	10 22 ↑	10 22 ↑	12 24 ↗	13 25 ↑	13 24 ↗
Houston Pilots M - Kinder 1	8 18 ↓	8 17 ↓	8 16 ↓	8 15 ←	7 14 ←	6 13 ←	6 12 ←	6 12 ←	6 12 ←	6 12 ←	6 12 ←	6 12 ←	6 13 ←	6 14 ←	6 15 ↑	7 15 ↗	8 17 ↗	8 18 ↗	9 21 ↑	10 21 ↑	10 22 ↑	12 24 ↗	13 24 ↗	13 24 ↗
Houston Pilots L - Greens Bayou	9 18 ↓	8 17 ↓	8 16 ↓	8 15 ←	7 14 ←	6 13 ←	6 12 ←	6 12 ←	6 12 ←	6 12 ←	6 12 ←	6 12 ←	6 13 ←	6 13 ←	6 15 ↑	7 15 ↗	8 17 ↗	8 18 ↗	9 21 ↑	10 21 ↑	10 22 ↑	12 23 ↗	13 24 ↗	13 24 ↗
Houston Pilots K - Shell Crude	9 18 ↓	8 17 ↓	8 16 ↓	8 15 ←	7 15 ←	6 13 ←	6 12 ←	6 12 ←	6 12 ←	6 12 ←	6 12 ←	6 12 ←	6 13 ←	6 14 ←	6 15 ↑	7 15 ↗	8 17 ↗	8 18 ↗	9 20 ↑	10 21 ↑	10 22 ↑	12 23 ↗	13 24 ↗	13 23 ↗
Houston Pilots J - Lynchburg Ferries	9 17 ↓	8 17 ↓	8 16 ↓	8 15 ←	7 14 ←	6 12 ←	6 12 ←	6 12 ←	6 10 ←	6 10 ←	5 10 ←	6 12 ←	6 12 ←	6 13 ←	6 14 ←	7 15 ↗	8 16 ↗	8 17 ↗	9 20 ↑	9 21 ↑	10 21 ↑	12 23 ↗	13 24 ↗	13 23 ↗
Houston Pilots I - Exxon 3	10 18 ↓	10 17 ↓	10 17 ↓	10 16 ←	9 15 ←	8 13 ←	8 13 ←	8 13 ←	8 13 ←	8 13 ←	8 13 ←	8 13 ←	8 13 ←	8 14 ←	9 15 ↑	10 15 ↗	10 17 ↗	10 18 ↗	12 20 ↑	13 20 ↑	13 21 ↑	13 22 ↑	14 23 ↑	14 23 ↑
Houston Pilots H - Morgans Point	10 18 ↓	10 17 ↓	10 17 ↓	10 16 ←	9 15 ←	8 13 ←	8 13 ←	8 12 ←	8 12 ←	8 12 ←	8 12 ←	8 12 ←	8 13 ←	8 14 ←	9 15 ↑	10 15 ↗	10 16 ↗	10 17 ↗	12 18 ↗	12 20 ↑	13 20 ↑	13 22 ↑	13 23 ↑	14 23 ↑
Houston Pilots G - 75/76	10 20 ↘	10 18 ↓	10 20 ↘	10 17 ←	10 15 ←	9 14 ←	9 14 ←	8 13 ←	8 13 ←	8 13 ←	8 13 ←	8 13 ←	9 14 ←	10 15 ←	10 15 ↑	10 17 ↑	10 18 ↗	12 20 ↗	13 21 ↑	13 21 ↑	14 22 ↑	14 23 ↑	15 25 ↑	15 24 ↑
Houston Pilots F - 63/64	12 20 ↘	10 20 ↓	10 20 ↓	10 17 ←	10 15 ←	9 14 ←	8 13 ←	8 13 ←	8 13 ←	8 13 ←	8 13 ←	8 13 ←	9 14 ←	10 15 ←	10 15 ↑	10 17 ↑	10 18 ↗	12 20 ↗	13 21 ↑	13 21 ↑	14 22 ↑	14 23 ↑	15 24 ↑	15 25 ↑
Houston Pilots E - 51/52	12 20 ↗	12 18 ↓	10 18 ↓	10 17 ↓	9 15 ←	8 13 ←	8 13 ←	8 13 ←	8 13 ←	8 13 ←	8 13 ←	8 13 ←	9 14 ←	10 15 ←	10 16 ↑	10 17 ↑	10 17 ↗	13 18 ↗	13 20 ↑	13 21 ↑	14 21 ↑	14 23 ↑	15 24 ↑	15 24 ↑
Houston Pilots D - 37/38	12 20 ↗	12 18 ↓	10 18 ↓	10 17 ↓	9 15 ←	8 13 ←	8 13 ←	8 13 ←	8 13 ←	8 13 ←	8 13 ←	8 13 ←	9 14 ←	10 15 ←	10 16 ↑	10 16 ↑	10 17 ↗	12 18 ↗	13 20 ↑	13 21 ↑	14 22 ↑	14 23 ↑	15 24 ↑	15 24 ↑
Houston Pilots C - 25/26	12 20 ↗	12 18 ↓	10 18 ↓	10 16 ←	9 15 ←	8 13 ←	8 13 ←	8 13 ←	8 13 ←	8 13 ←	8 13 ←	8 14 ←	9 15 ←	10 16 ←	10 16 ↑	10 17 ↑	10 18 ↗	12 20 ↗	13 21 ↑	13 21 ↑	13 23 ↑	14 24 ↑	15 24 ↑	15 24 ↑
Houston Pilots B - 11/12	12 18 ↗	10 17 ↓	10 17 ↓	10 16 ←	8 15 ←	8 13 ←	8 13 ←	8 13 ←	8 13 ←	8 13 ←	8 13 ←	8 14 ←	8 15 ←	9 16 ←	10 16 ↑	10 17 ↑	10 18 ↗	12 18 ↗	12 20 ↑	13 21 ↑	13 21 ↑	14 22 ↑	15 23 ↑	15 23 ↑
Houston Pilots A - 1 & 2 Bravo	13 20 ↑	12 18 ↘	10 18 ↘	10 16 ←	10 15 ←	9 14 ←	9 14 ←	9 14 ←	9 14 ←	10 15 ←	10 15 ←	10 16 ←	10 17 ←	10 17 ←	12 18 ↑	13 20 ↑	13 20 ↑	13 21 ↑	14 22 ↑	14 22 ↑	15 22 ↑	15 24 ↑	15 25 ↑	15 25 ↑

**NOTE: This is automated data that may/may not agree with the official BAM thinking that's found on the daily slides. This data should be used as a guide only.**

# Houston Pilots: TUE. 2/11/2025



## Forecast Discussion

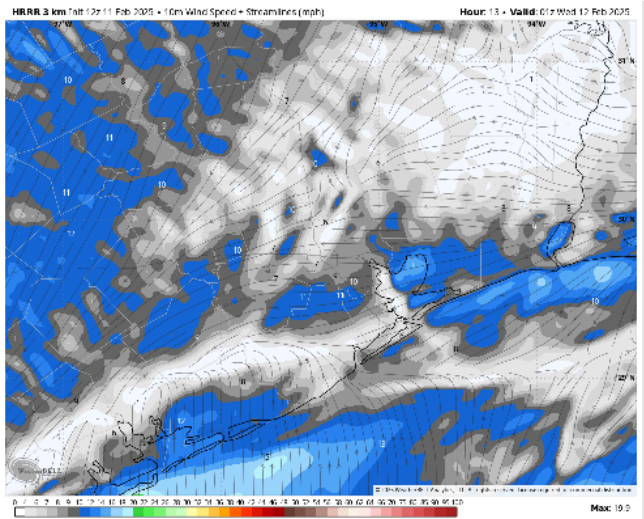
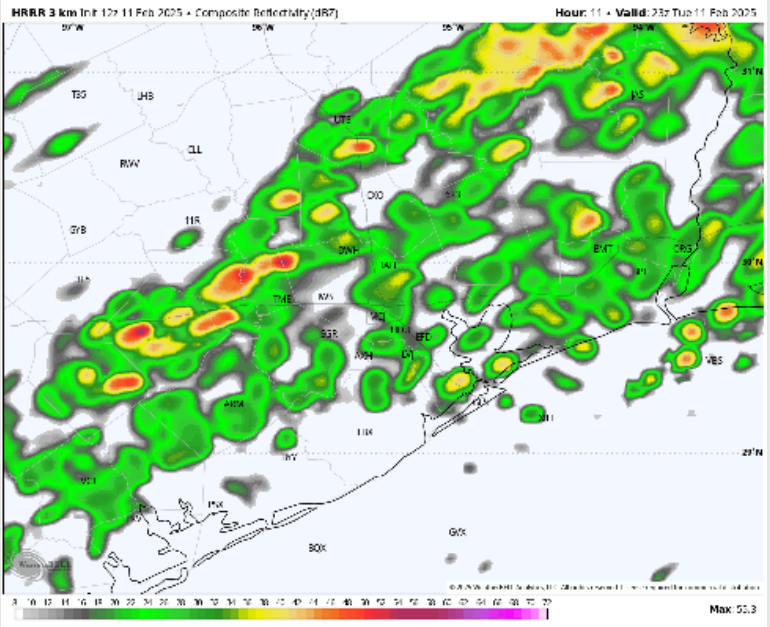
**Precip:** Favoring scattered showers and storms to continue through ~9PM. Main storm risks will be isolated lightning and wind gusts of 20-25 kts.

**Wind:** Winds will be out of the S/SE through 2 PM, quickly shifting out of the N/NE after that time due to a passing front but gradually shifting clockwise out of the S/SW by 12 AM WED. **N of Morgan's Point:** Winds will be at 5 – 10 kts throughout the day. **S of Morgan's Point:** Winds will be at 8 – 13 kts for the rest of the day.

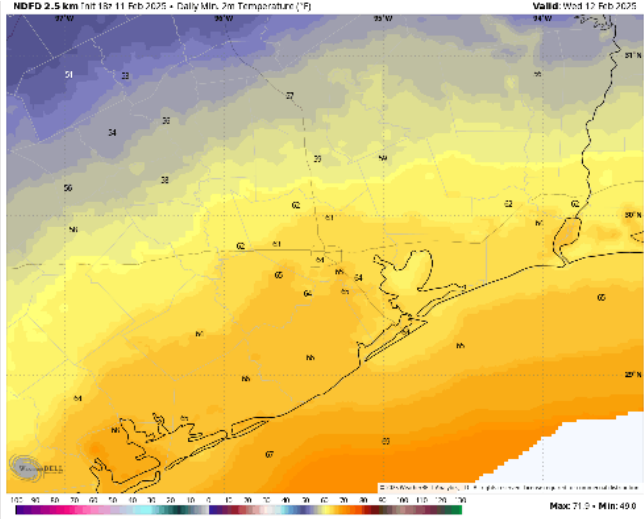
**Low Temps:** **N of Morgan's Point:** Mid 60s F. **S of Morgan's Point:** Low to mid 60s F.

**Visibility:** Favoring fog to redevelop just before midnight and into WED AM. See visibility slide for more details!

## Precip Image: 5 PM CT



**Wind Speed  
7 PM CT**



**Low Temps  
WED AM**

# Houston Pilots: WED. 2/12/2025



## Forecast Discussion

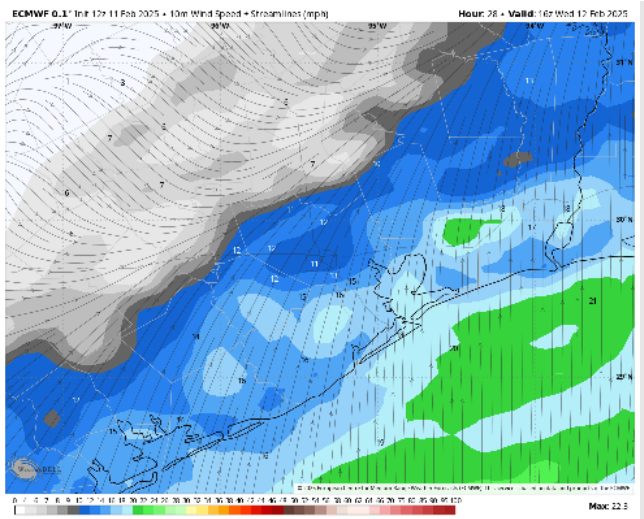
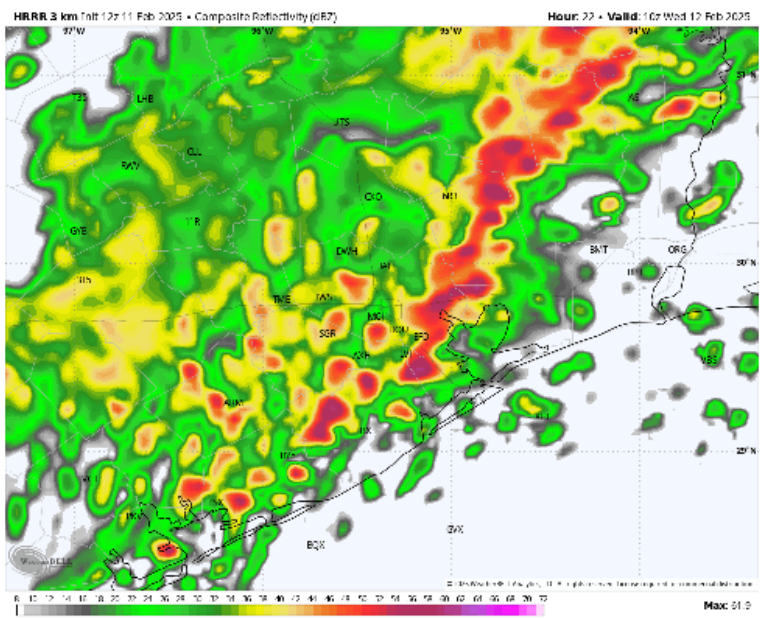
**Precip:** Scattered showers and storms possible for all Stations from 2 AM to 4 PM as a front passes. **A few strong to severe storms may be possible, with 40-50 kts wind gusts the main concern.**

**Wind:** Winds will be out of S/SW through ~4 PM, gradually shifting out of the N/NE by 8 PM. **N of Morgan's Point:** Winds will be at 3 - 8 kts, increasing to 9 - 14 kts from 7AM to 2PM. **S of Morgan's Point:** Winds will be at 11 - 16 kts through 5 PM, decreasing to 5 -10 kts after that time. **Non-thunderstorm wind gusts may reach 20 - 25 kts from 3AM to 4PM for all Stations.**

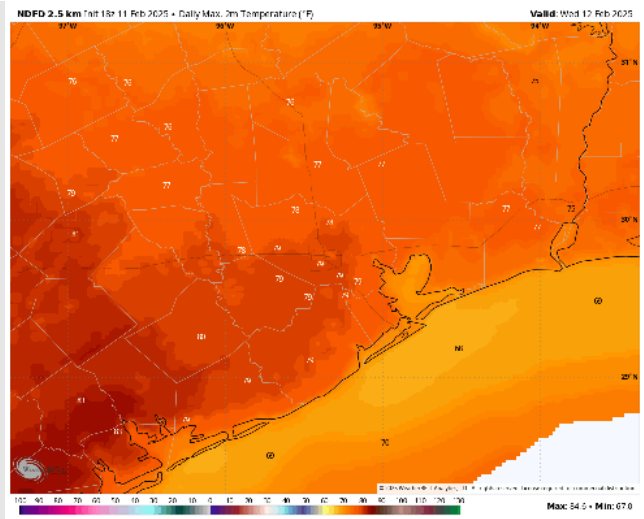
**High Temps:** **N of Morgan's Point:** High 70s F. **S of Morgan's Point:** High 60s to low 70s F.

**Visibility:** Watching sea fog risks for all Stations after Midnight and through ~6AM Wednesday morning.

## Precip Image: 4 AM CT



Wind Speed:  
10 AM CT



High Temps  
Wednesday

# Houston Pilots: THU. 2/13/2025



## Forecast Discussion

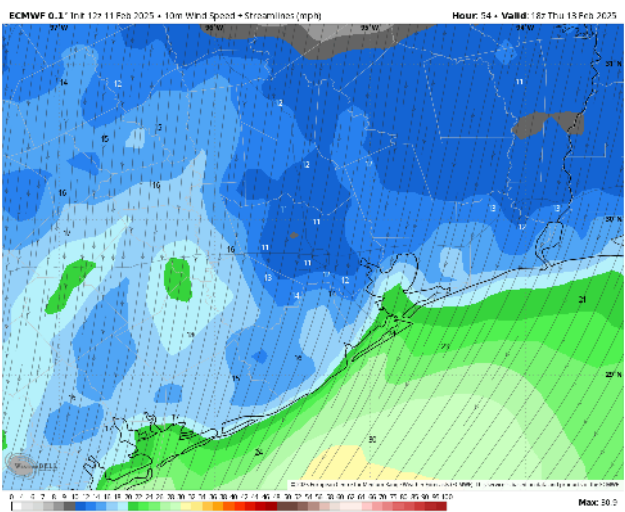
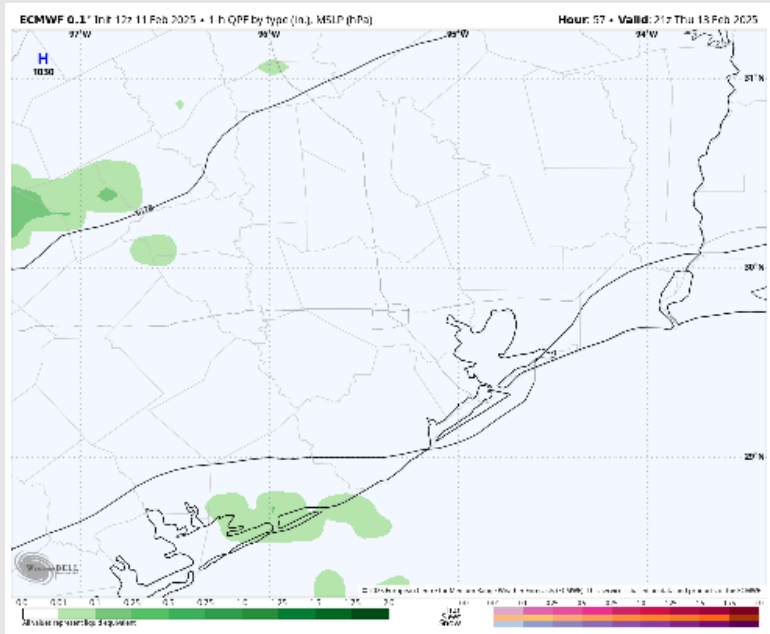
**Precip:** Favoring isolated (20%) showers from 2PM to 6PM for all Stations.

**Wind:** Winds will be out of the N/NE throughout the day. **N of Morgan's Point:** Winds will be at 7 - 12 kts throughout the day. **S of Morgan's Point:** Winds will be at 15 - 20 kts for Thursday. **Wind gusts of 20 - 25 kts will be in play for all Stations, with a few gusts near 30 kts possible S. of Morgan's Point.**

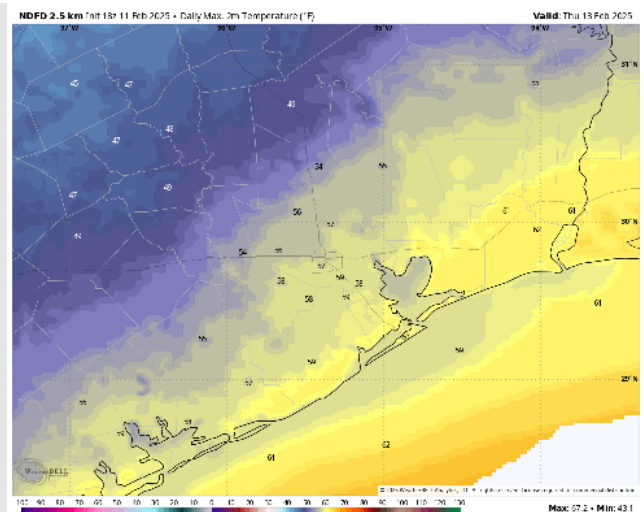
**High Temps:** **N of Morgan's Point:** High 50s F. **S of Morgan's Point:** High 50s F to near 60 F.

**Visibility:** No fog concerns for Thursday.

## Precip Image: 3 PM CT



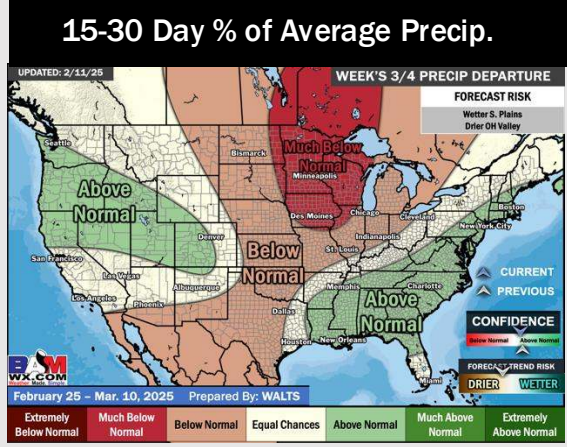
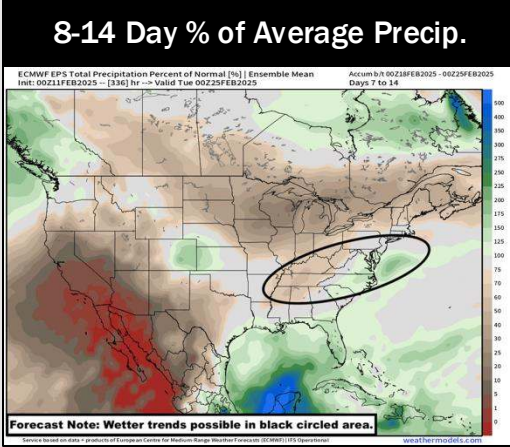
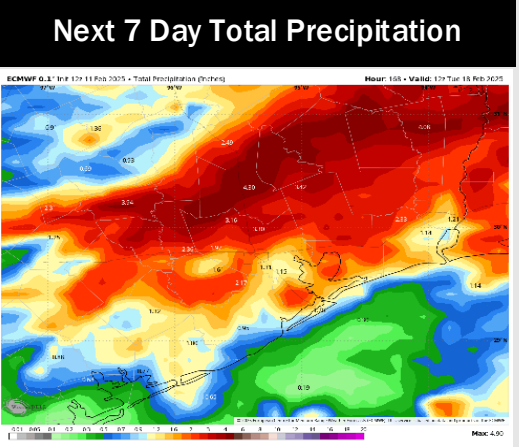
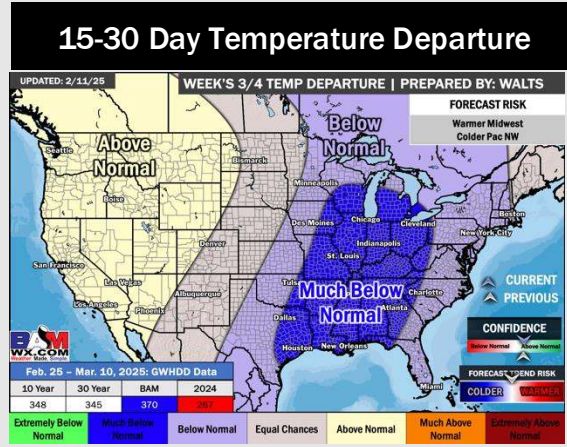
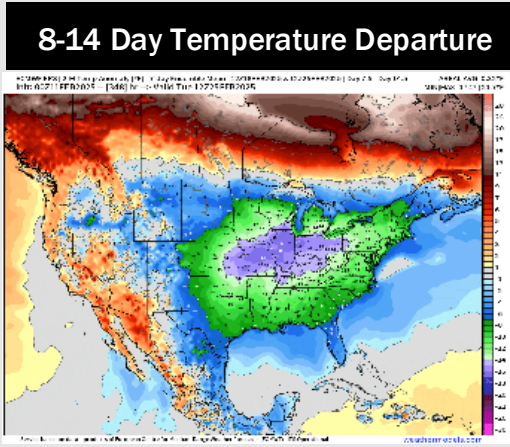
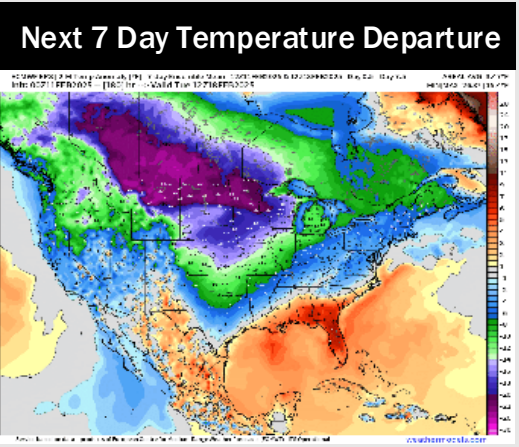
Wind Speed:  
1 PM CT



High Temps  
Thursday



# Houston Pilots: 2/11/25



- Temps are expected to be slightly above normal for the week ahead. Scattered rain chances are favored through the week.
- Well below normal temps and near normal rainfall are expected for week 2.
- Much below normal temperatures and near normal precipitation chances are expected for the weeks 3/4 timeframe.