

# Houston Pilots Forecast Package



Updated: 5:30 AM CT

Tuesday, February 11, 2025

Forecaster: Alyssa Elliott

## Weather Headlines

- Ongoing sea fog expected to remain in play for all stations through 8AM. See visibility slide for more information!
- Storms, some strong, will be possible on Wednesday.
- Gusty winds are in store for Wednesday and Thursday, with gusts of 20 – 25 kts possible.



Current Radar: 5:15 AM CT

As always, please do not hesitate to reach out to us with any forecast questions at **(317)-560-8122**. Press **1** for forecast questions.

You can also access real-time forecast updates and 24/7 meteorological chat assistance on your [Clarity](#) app. Click [here](#) for login assistance.

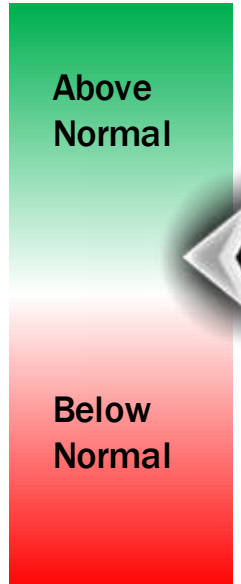
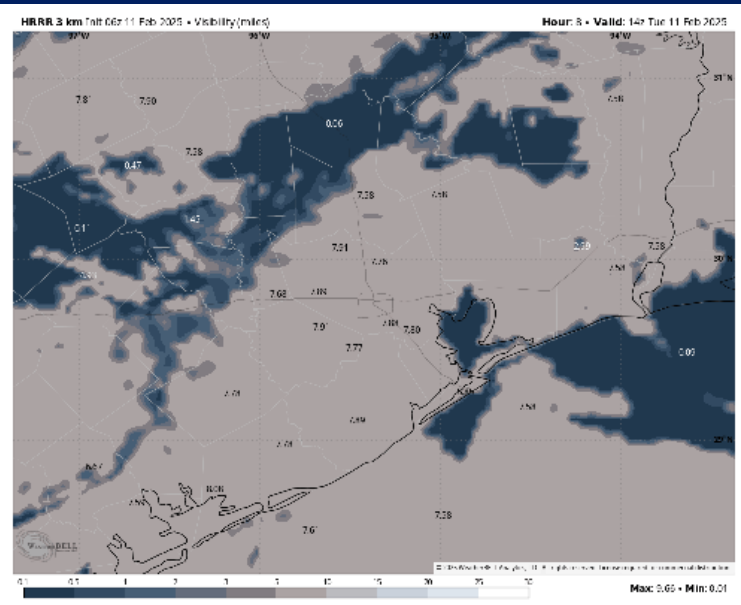
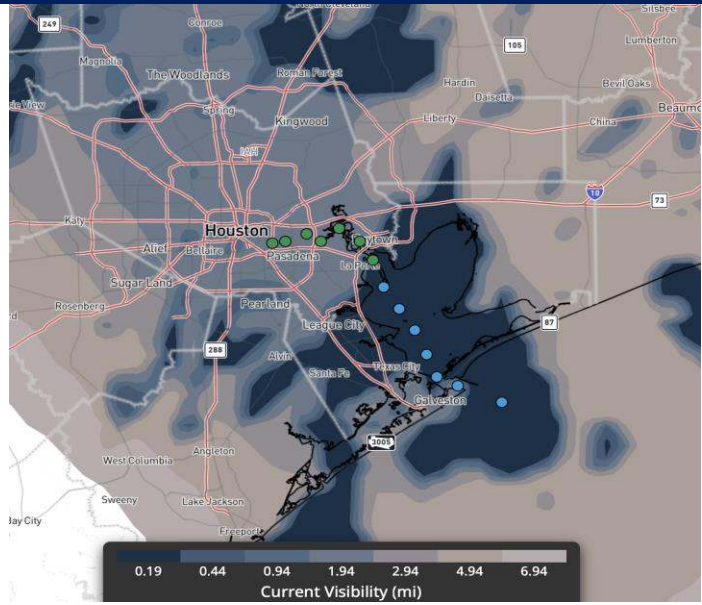


# Houston Pilots Visibility Report



## CURRENT VISIBILITY (5:10 AM CST)      7 AM CST TUE VISIBILITY

## Confidence



Patchy, dense fog risks expected to continue for **all stations** through ~8AM, with visibilities of less than 1 mile in play at times. Fog will tend to be more widespread for **11/12** and the **Boarding Station** through this period.

Fog coverage expected to become patchier after 8 AM for stations **N of Morgan's Point** and recede no later than 10AM. Risk to the forecast is patchy fog potential ends earlier.

**S of Morgan's Point:** From 8AM – 12PM, visibilities of less than 2 miles will be possible. Conditions are expected to clear completely for all **Stations S of Morgan's Point** by 12PM. There is potential for **11/12** and the **Boarding Station** to see a hazy risk lingering until 2 PM.

TIMEFRAME DISCUSSED	THREAT
CURRENT – 12 PM TUE	Medium

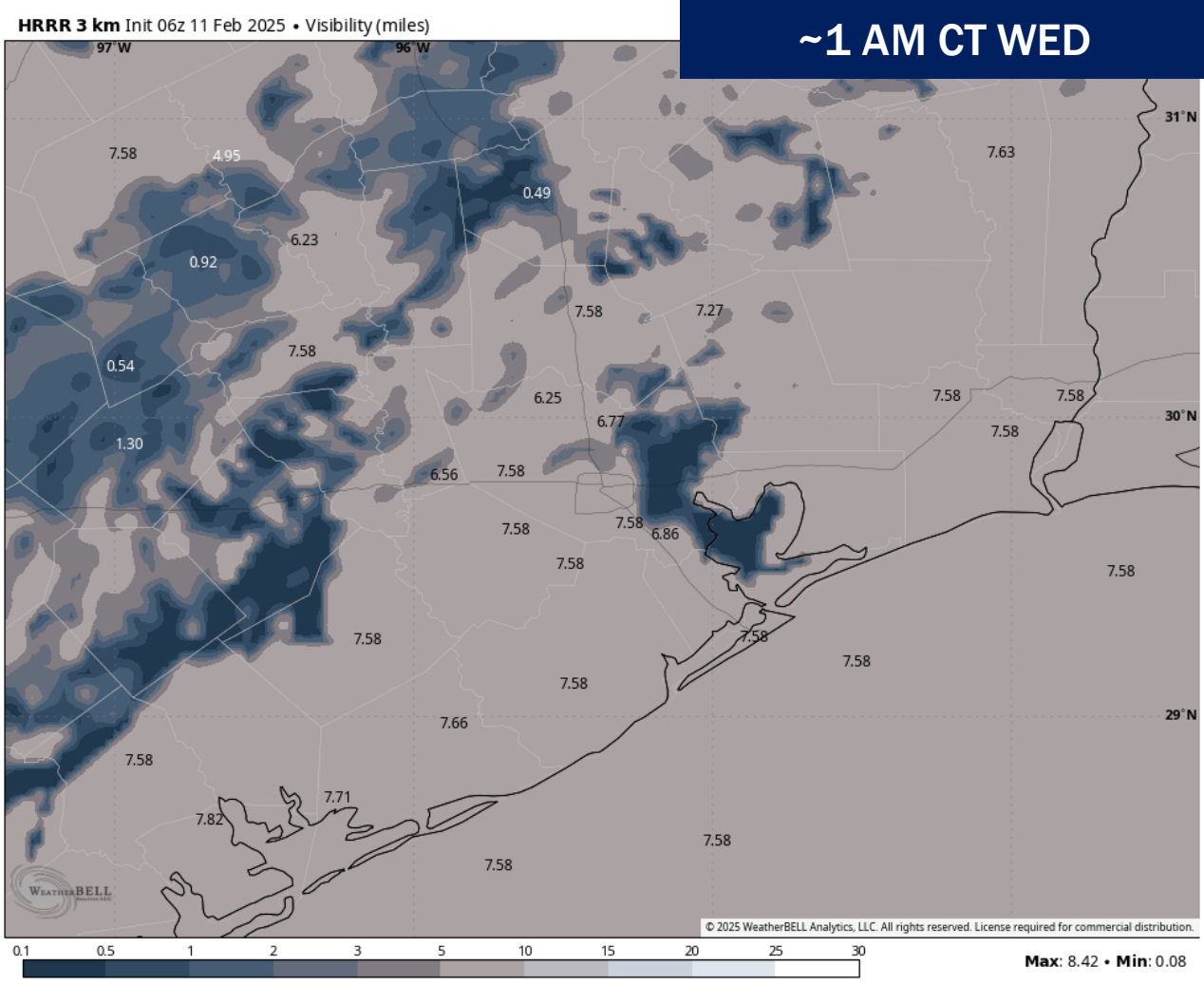
# Houston Pilots Visibility Report



TIMEFRAME DISCUSSED	THREAT
12 AM – 6 AM WED	Low - Medium

### Forecast Confidence

Above Normal Below Normal



Watching for a low-end risk for patchy fog reducing visibility for stations N of 11/12 to less than 2 miles from 12AM – 6AM Wednesday.

This window of opportunity will be brief and patchy due to unfavorable winds until midnight and a passing front / light rain chances beginning to work into the area after 6AM.

Confidence remains low given uncertainties on the timing of the front.

# Houston Pilots Extended Range Visibility Report



## Friday 2/13/25

No fog concerns for Friday.

### Forecast Confidence



## Saturday 2/15/25

No fog concerns for Saturday.

### Forecast Confidence



## Sunday 2/16/25

No fog concerns for Sunday.

### Forecast Confidence



## Chance for Fog

Friday AM	Unlikely
Friday PM	Unlikely
Saturday AM	Unlikely
Saturday PM	Unlikely
Sunday AM	Unlikely
Sunday PM	Unlikely

# Houston Pilots Visibility Chart (miles)



## Forecast Confidence



Visibility	Tue 7 am	Tue 8 am	Tue 9 am	Tue 10 am	Tue 11 am	Tue 12 pm	Tue 1 pm	Tue 2 pm	Tue 3 pm	Tue 4 pm	Tue 5 pm	Tue 6 pm	Tue 7 pm	Tue 8 pm	Tue 9 pm	Tue 10 pm	Tue 11 pm	Wed 12 am	Wed 1 am	Wed 2 am	Wed 3 am	Wed 4 am	Wed 5 am	Wed 6 am
Houston Pilots N - 610 Bridge	0.3	0.5	0.8	2.9	3.9	3.9	2	2.9	2.9	3.9	3.9	3.9	3.9	4.9	4.9	4.9	3.9	3.9	2.5	1.1	1.6	1.1	2.5	2.5
Houston Pilots M - Kinder 1	0.5	0.5	1.1	2.9	3.9	3.9	2.9	2.9	2.9	3.9	3.9	3.9	3.9	4.9	4.9	4.9	3.9	3.9	2.5	1.1	1.6	1.1	2.5	2.5
Houston Pilots L - Greens Bayou	0.5	0.8	1.1	2.9	3.9	3.9	2.9	2.9	3.9	3.9	3.9	3.9	3.9	4.9	4.9	3.9	3.9	3.9	2	1.1	1.1	1.1	2	2
Houston Pilots K - Shell Crude	0.5	0.8	1.6	2.9	3.9	3.9	2.9	2.9	3.9	3.9	3.9	3.9	3.9	4.9	4.9	3.9	3.9	3.9	2	1.1	1.1	1.1	2	2
Houston Pilots J - Lynchburg Ferries	0.5	0.8	1.6	2.9	3.9	3.9	2.9	2.9	3.9	3.9	3.9	3.9	3.9	4.9	4.9	3.9	3.9	3.9	2.5	1.1	1.1	1.1	2	2
Houston Pilots I - Exxon 3	0.5	0.8	0.8	2.9	3.9	3.9	2.9	2.9	3.9	3.9	3.9	3.9	3.9	4.9	4.9	3.9	3.9	3.9	2	1.1	1.1	1.1	2	2
Houston Pilots H - Morgans Point	0.5	0.8	0.5	0.8	3.9	3.9	2.9	2.9	3.9	3.9	3.9	3.9	3.9	4.9	4.9	3.9	3.9	2.9	2	1.1	1.1	1.1	2	2
Houston Pilots G - 75/76	0.3	0.3	0.3	0.3	0.8	4.9	4.9	2.5	2.9	3.9	4.9	3.9	3.9	4.9	4.9	3.9	3.9	2.9	2	1.1	1.6	1.1	1.6	2.5
Houston Pilots F - 63/64	0.3	0.3	0.3	0.3	2.9	4.9	4.9	3.9	1.6	3.9	4.9	3.9	3.9	4.9	4.9	3.9	3.9	2.9	2	1.1	1.6	1.1	2	2
Houston Pilots E - 51/52	0.3	0.3	0.3	2.9	3.9	4.9	4.9	4.9	1.6	3.9	4.9	3.9	3.9	4.9	4.9	3.9	3.9	2.9	2	1.1	1.6	1.1	2.5	2
Houston Pilots D - 37/38	0.3	0.3	0.3	2.9	3.9	4.9	4.9	4.9	2.9	3.9	3.9	3.9	3.9	4.9	4.9	3.9	3.9	2.9	2	1.1	1.6	1.1	2.5	2
Houston Pilots C - 25/26	0.3	0.3	0.3	2.9	3.9	4.9	4.9	4.9	2.9	1.1	3.9	3.9	3.9	4.9	3.9	3.9	3.9	2.9	2	1.1	1.6	1.1	2.5	2
Houston Pilots B - 11/12	0.5	0.5	0.5	3.9	4.9	4.9	4.9	4.9	3.9	1.1	3.9	3.9	3.9	4.9	4.9	3.9	3.9	3.9	2.5	1.1	1.6	1.1	2.5	2.5
Houston Pilots A - 1 & 2 Bravo	0.5	0.5	2	3.9	5.9	5.9	5.9	4.9	4.9	2.5	4.9	4.9	4.9	4.9	4.9	4.9	3.9	3.9	2.9	2.5	2.5	2.9	5	5

**NOTE: This is automated data that may/may not agree with the official B.A.M. thinking that's found on the daily slides or special visibility report slides. This data should be used as a guide only**

# Houston Pilots Wind Chart

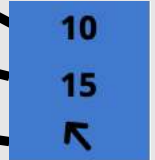


## Forecast Confidence



Sustained wind 10 Knots  
Gusts 15 Knots  
Wind from the SE

## Example



Wind	Tue 7 am	Tue 8 am	Tue 9 am	Tue 10 am	Tue 11 am	Tue 12 pm	Tue 1 pm	Tue 2 pm	Tue 3 pm	Tue 4 pm	Tue 5 pm	Tue 6 pm	Tue 7 pm	Tue 8 pm	Tue 9 pm	Tue 10 pm	Tue 11 pm	Wed 12 am	Wed 1 am	Wed 2 am	Wed 3 am	Wed 4 am	Wed 5 am	Wed 6 am	
Houston Pilots N - 610 Bridge	5 9 ↗	5 10 ↗	6 12 ↗	6 14 ↗	8 15 ↗	9 17 ↗	10 20 ↗	9 20 ↘	9 20 ↘	9 18 ↘	8 16 ↘	8 16 ↘	7 14 ↘	7 14 ↘	6 14 ↘	6 14 ↘	6 14 ↘	6 14 ↘	6 14 ↘	6 15 ↘	7 15 ↘	8 16 ↘	8 17 ↘	8 20 ↘	
Houston Pilots M - Kinder 1	5 9 ↗	5 10 ↗	6 12 ↗	6 14 ↗	8 15 ↗	9 17 ↗	10 20 ↗	9 20 ↘	9 20 ↘	9 18 ↘	8 17 ↘	8 16 ↘	7 14 ↘	7 14 ↘	6 14 ↘	6 14 ↘	6 14 ↘	6 14 ↘	6 14 ↘	6 15 ↘	7 15 ↘	8 16 ↘	8 17 ↘	8 20 ↘	
Houston Pilots L - Greens Bayou	5 9 ↗	5 10 ↗	6 12 ↗	6 14 ↗	8 15 ↗	9 17 ↗	10 20 ↗	9 20 ↘	9 20 ↘	9 18 ↘	8 17 ↘	8 16 ↘	7 14 ↘	7 14 ↘	6 14 ↘	6 13 ↘	6 14 ↘	6 13 ↘	6 14 ↘	6 14 ↘	7 15 ↘	7 16 ↘	8 17 ↘	8 18 ↘	
Houston Pilots K - Shell Crude	5 9 ↗	5 10 ↗	6 12 ↗	6 14 ↗	8 15 ↗	9 17 ↗	10 20 ↗	10 20 ↘	9 20 ↘	9 18 ↘	9 17 ↘	8 16 ↘	7 14 ↘	7 14 ↘	6 14 ↘	6 13 ↘	6 14 ↘	6 13 ↘	6 14 ↘	6 14 ↘	7 15 ↘	7 16 ↘	8 17 ↘	8 18 ↘	
Houston Pilots J - Lynchburg Ferries	3 9 ↗	5 10 ↗	6 12 ↗	6 14 ↗	8 15 ↗	9 17 ↗	10 20 ↗	9 18 ↘	9 18 ↘	9 18 ↘	8 17 ↘	8 16 ↘	7 14 ↘	6 14 ↘	6 13 ↘	6 13 ↘	6 13 ↘	6 13 ↘	6 13 ↘	6 14 ↘	6 15 ↘	7 15 ↘	8 16 ↘	8 18 ↘	
Houston Pilots I - Exxon 3	6 10 ↗	7 12 ↗	8 13 ↗	8 14 ↗	9 15 ↗	10 17 ↗	10 20 ↗	10 20 ↘	10 20 ↘	10 18 ↘	10 17 ↘	10 17 ↘	10 15 ↘	9 14 ↘	9 14 ↘	9 14 ↘	9 14 ↘	9 14 ↘	9 14 ↘	9 15 ↘	10 15 ↘	10 16 ↘	10 17 ↘	10 18 ↘	
Houston Pilots H - Morgans Point	6 9 ↗	7 10 ↗	7 12 ↗	8 14 ↗	9 15 ↗	10 17 ↗	12 20 ↗	10 20 ↘	10 20 ↘	10 18 ↘	10 17 ↘	10 17 ↘	9 15 ↘	9 14 ↘	9 14 ↘	9 14 ↘	8 14 ↘	8 14 ↘	8 14 ↘	9 15 ↘	9 15 ↘	10 16 ↘	10 17 ↘	12 18 ↘	
Houston Pilots G - 75/76	7 10 ↗	8 12 ↗	8 13 ↗	9 15 ↗	10 16 ↗	12 18 ↗	13 21 ↗	13 21 ↘	13 21 ↘	13 21 ↘	13 20 ↘	12 17 ↘	10 16 ↘	10 16 ↘	10 15 ↘	10 15 ↘	10 15 ↘	10 15 ↘	10 15 ↘	10 16 ↘	10 16 ↘	12 17 ↘	13 18 ↘	13 20 ↘	
Houston Pilots F - 63/64	7 10 ↗	8 12 ↗	8 13 ↗	9 15 ↗	10 16 ↗	12 18 ↗	13 21 ↗	13 22 ↘	13 21 ↘	13 21 ↘	12 20 ↘	12 17 ↘	10 16 ↘	10 16 ↘	10 15 ↘	10 15 ↘	10 15 ↘	10 15 ↘	10 15 ↘	10 16 ↘	10 16 ↘	12 17 ↘	13 18 ↘	13 20 ↘	
Houston Pilots E - 51/52	7 10 ↗	8 12 ↗	8 13 ↗	9 15 ↗	10 16 ↗	12 18 ↗	13 21 ↗	13 21 ↘	13 21 ↘	13 21 ↘	12 18 ↘	12 17 ↘	10 16 ↘	10 15 ↘	10 15 ↘	10 15 ↘	10 15 ↘	10 15 ↘	10 15 ↘	10 16 ↘	10 16 ↘	12 17 ↘	13 18 ↘	13 20 ↘	
Houston Pilots D - 37/38	7 10 ↗	8 12 ↗	8 13 ↗	9 15 ↗	10 16 ↗	12 18 ↗	13 20 ↗	13 21 ↘	13 21 ↘	13 21 ↘	12 18 ↘	10 17 ↘	10 15 ↘	10 15 ↘	10 15 ↘	10 15 ↘	10 15 ↘	10 15 ↘	10 16 ↘	10 16 ↘	10 16 ↘	12 17 ↘	13 18 ↘	13 20 ↘	
Houston Pilots C - 25/26	7 10 ↗	8 12 ↗	8 13 ↗	9 15 ↗	10 16 ↗	12 18 ↗	13 20 ↗	13 21 ↘	13 20 ↘	13 20 ↘	12 18 ↘	10 17 ↘	10 15 ↘	10 15 ↘	10 15 ↘	10 15 ↘	10 15 ↘	10 16 ↘	10 16 ↘	10 17 ↘	10 17 ↘	12 17 ↘	13 20 ↘	13 21 ↘	
Houston Pilots B - 11/12	6 10 ↗	7 12 ↗	8 13 ↗	9 15 ↗	10 16 ↗	12 17 ↗	13 20 ↗	13 20 ↘	12 20 ↘	12 20 ↘	10 17 ↘	10 16 ↘	9 15 ↘	9 15 ↘	9 15 ↘	9 15 ↘	9 15 ↘	9 16 ↘	9 16 ↘	9 16 ↘	10 17 ↘	10 17 ↘	10 17 ↘	12 18 ↘	12 20 ↘
Houston Pilots A - 1 & 2 Bravo	8 13 ↗	8 13 ↗	9 15 ↗	10 16 ↗	12 17 ↗	13 18 ↗	13 20 ↗	13 21 ↘	13 21 ↘	13 20 ↘	12 18 ↘	10 17 ↘	10 16 ↘	10 16 ↘	10 17 ↘	10 17 ↘	10 17 ↘	10 17 ↘	10 17 ↘	10 17 ↘	10 18 ↘	13 20 ↘	13 20 ↘	14 21 ↘	14 22 ↘

**NOTE: This is automated data that may/may not agree with the official BAM thinking that's found on the daily slides. This data should be used as a guide only.**

# Houston Pilots: TUE. 2/11/2025



## Forecast Discussion

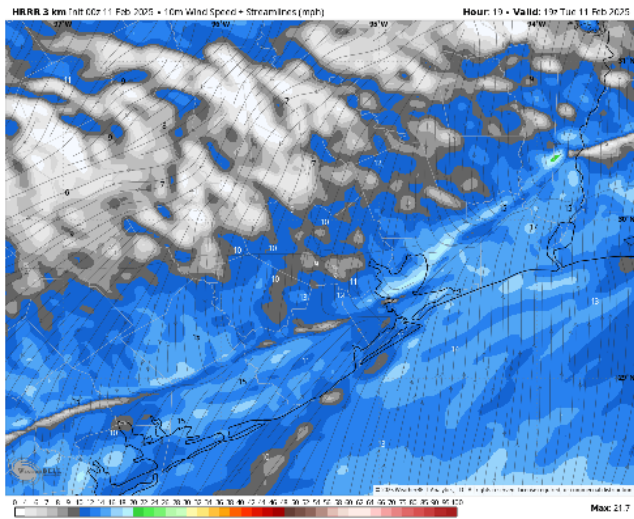
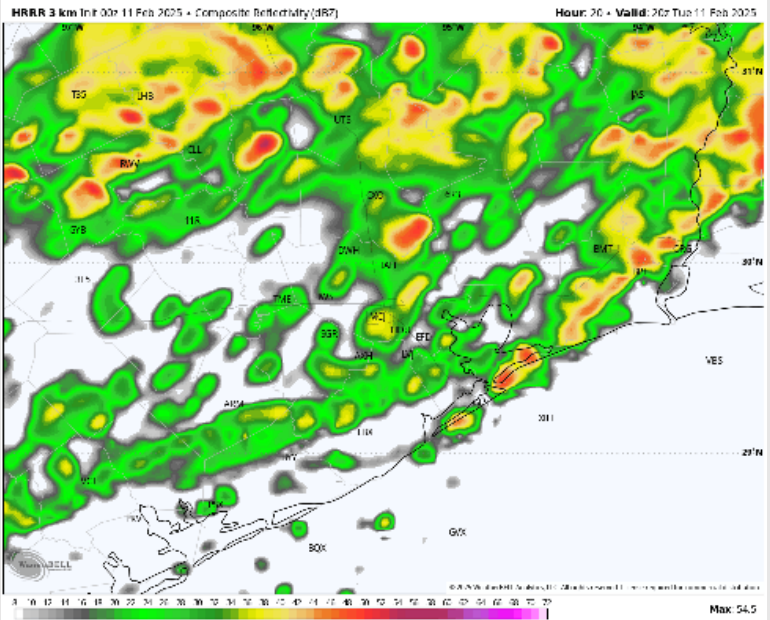
**Precip:** Scattered showers and some localized storms are favored for all stations from 3 AM to 7 PM. **Main storm risks will be isolated lightning and wind gusts of 20-25 kts.**

**Wind:** Winds will be out of the S/SE through 2 PM, quickly shifting out of the N/NW after that time due to a passing front but gradually shifting clockwise out of the S/SW by 12 AM WED. **N of Morgan's Point:** Winds will be at 5 – 10 kts throughout the day. **S of Morgan's Point:** Winds will be at 5 – 10 kts, slightly increasing to 9 – 14 kts after 3PM and for the rest of the day.

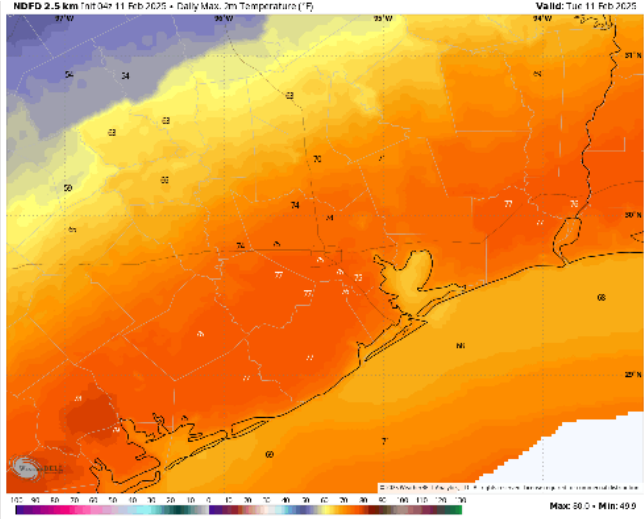
**High Temps:** **N of Morgan's Point:** Upper 70s F. **S of Morgan's Point:** Upper 60s F to lower 70s F.

**Visibility:** Monitoring patchy fog risks this AM. See visibility slide for more details!

## Precip Image: 2 PM CT



Wind Speed  
1 PM CT



High Temps  
Today

# Houston Pilots: WED. 2/12/2025



## Forecast Discussion

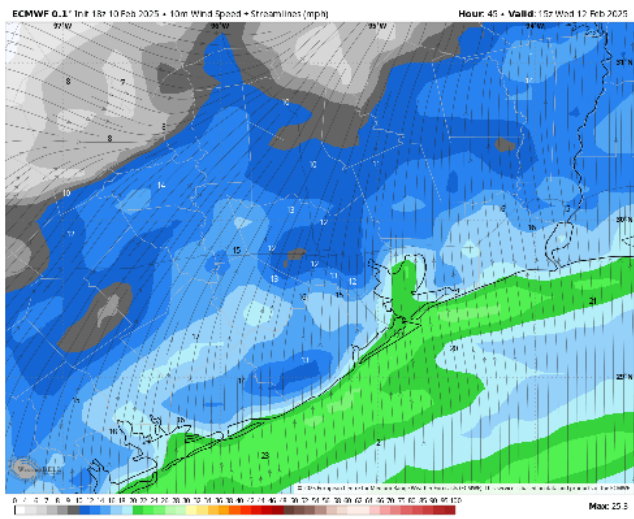
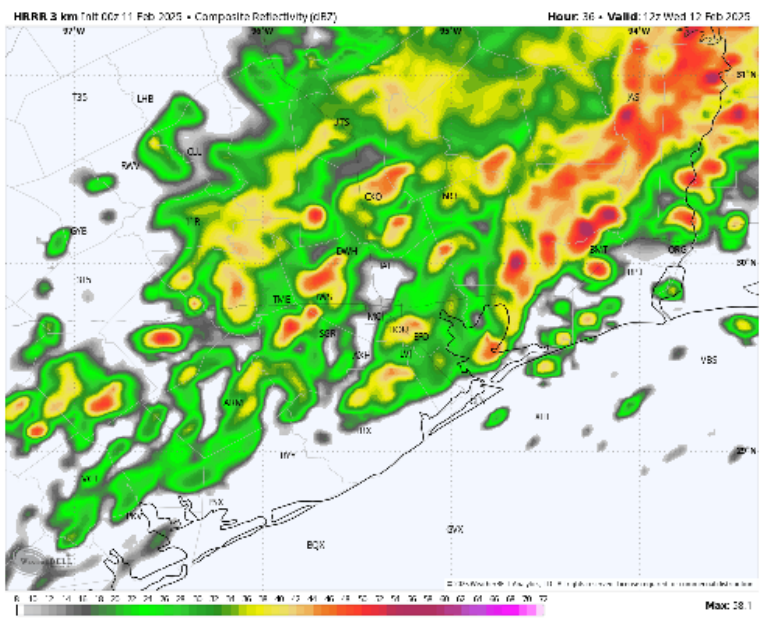
**Precip:** Scattered showers and storms possible for all Stations from 3 AM to 3 PM as a front passes. **A few strong to severe storms may be possible with the strongest storms, with 40-50 kts wind gusts the main concern.**

**Wind:** Winds will be out of S/SW through 3 PM, gradually shifting out of the N/NW by 8 PM. **N of Morgan's Point:** Winds will be at 3 - 8 kts, increasing to 9 - 14 kts from 7AM to 2PM. **S of Morgan's Point:** Winds will be at 11 - 16 kts through 5 PM, decreasing to 5 -10 kts after that time. **Non-thunderstorm wind gusts may reach 20 - 25 kts from 3AM to 4PM for all Stations.**

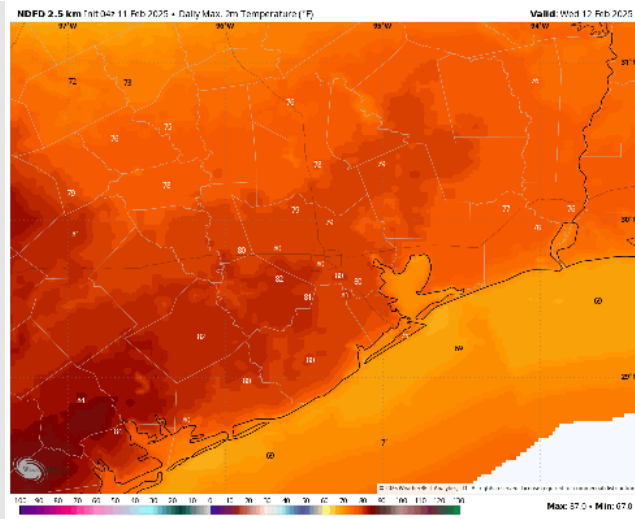
**High Temps:** **N of Morgan's Point:** High 70s F. **S of Morgan's Point:** High 60s to low 70s F.

**Visibility:** Watching sea fog risks for all Stations after Midnight and through Wednesday morning.

### Precip Image: 6 AM CT



Wind Speed:  
9 AM CT



High Temps  
Wednesday



# Houston Pilots: THU. 2/13/2025



## Forecast Discussion

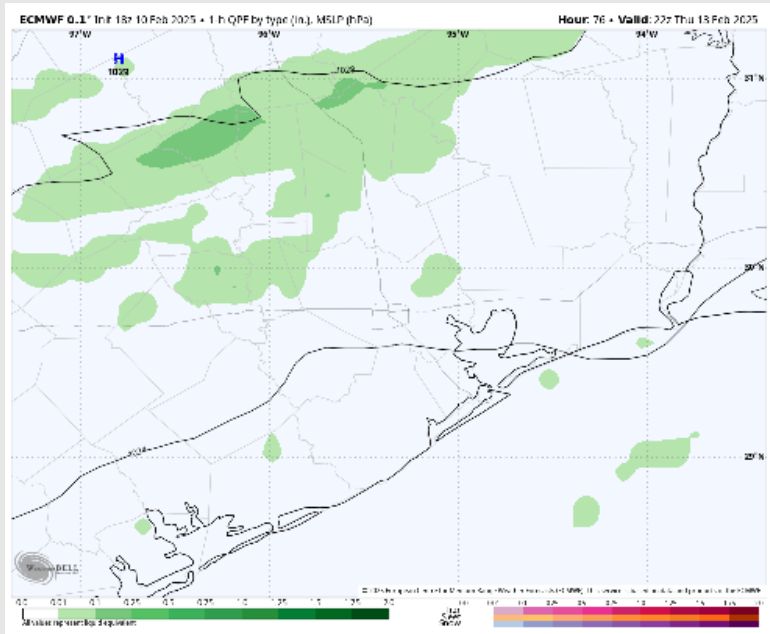
**Precip:** Favoring isolated (20%) showers from 2PM to 6PM for all Stations.

**Wind:** Winds will be out of the N/NW throughout the rest of the day. **N of Morgan's Point:** Winds will be at 7 - 12 kts throughout the day. **S of Morgan's Point:** Winds will be at 15 - 20 kts for Thursday. **Wind gusts of 25 - 30 kts in play for Stations S of Morgan's Point throughout the day.**

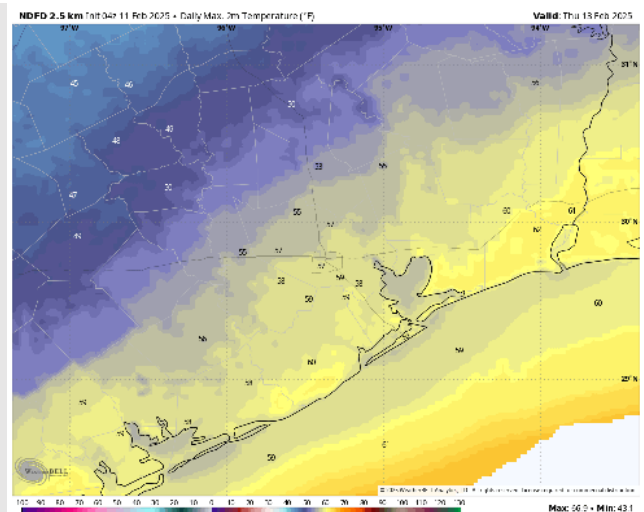
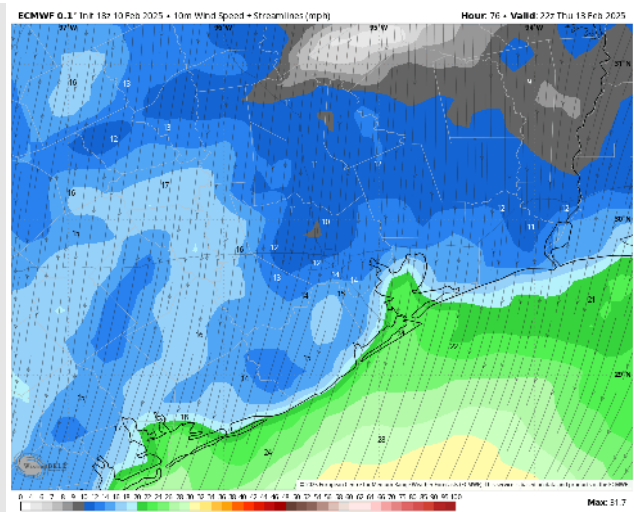
**High Temps:** **N of Morgan's Point:** High 50s F. **S of Morgan's Point:** High 50s F.

**Visibility:** No fog concerns for Thursday.

## Precip Image: 4 PM CT



Wind Speed:  
4 PM CT

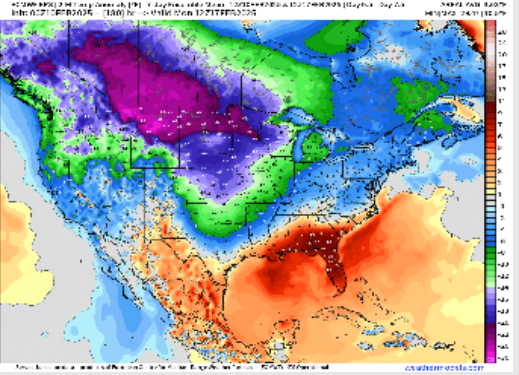


High Temps  
Thursday

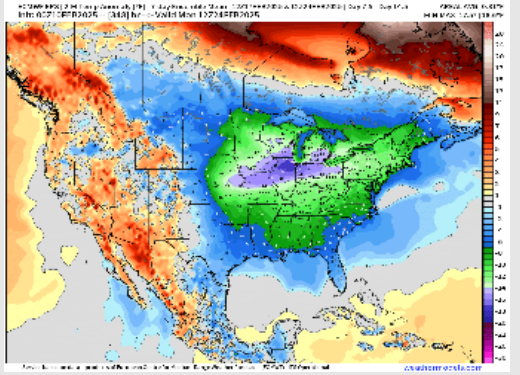
# Houston Pilots: 2/11/25



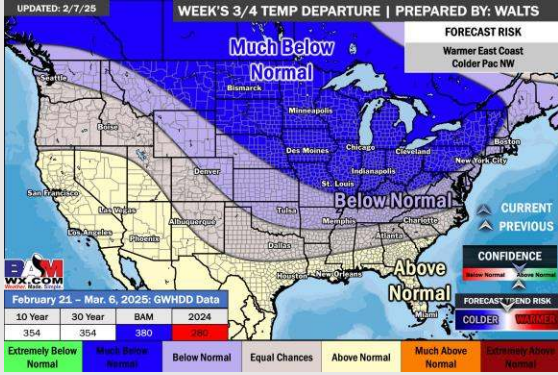
**Next 7 Day Temperature Departure**



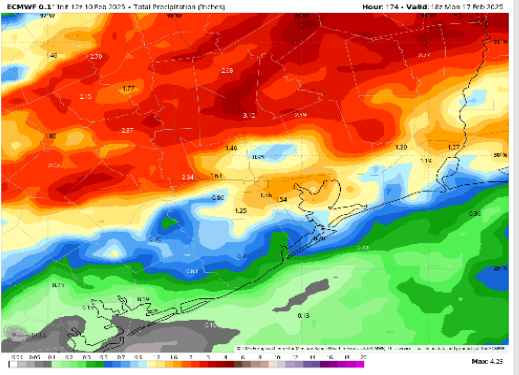
**8-14 Day Temperature Departure**



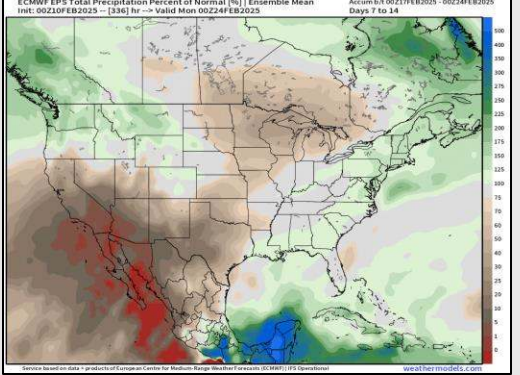
**15-30 Day Temperature Departure**



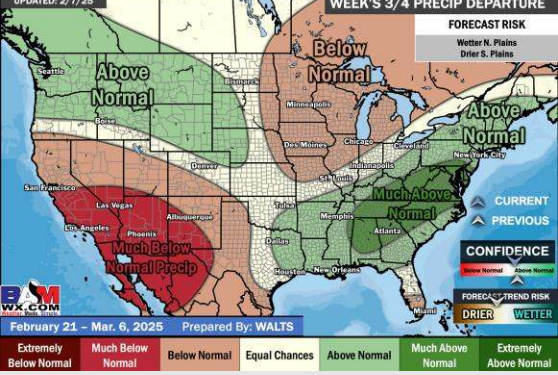
**Next 7 Day Total Precipitation**



**8-14 Day % of Average Precip.**



**15-30 Day % of Average Precip.**



- Temps are expected to be slightly above normal for the week ahead. Scattered rain chances are favored through the week.
- Below normal temps and near normal rainfall are expected for week 2.
- Above normal temperatures and above normal precipitation chances are expected for the weeks 3/4 timeframe.