

Houston Pilots Forecast Package



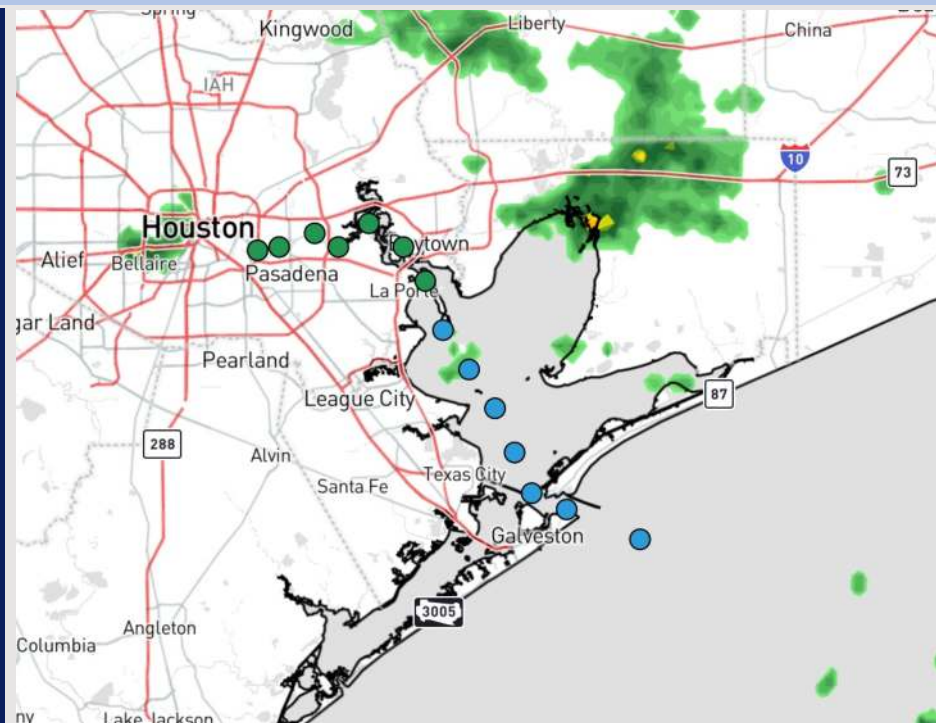
Updated: 5:30 PM CT

Saturday, January 4, 2025

Forecaster: Tyler Riggles

Weather Headlines

- **Elevated winds will bring the risk of wave heights of 6'+ come Sunday AM. Check the wave height slide for more info! VIDEO update as of 1 PM CT SAT.**
- **Keeping an eye on a patchy dense fog risk S of Morgan's Point tonight and into early SUN AM.**
- **Sunday will bring the risk of strong/severe thunderstorms for all stations.**



Current Radar: 5:21 PM CT

As always, please do not hesitate to reach out to us with any forecast questions at **(317)-560-8122**. Press 1 for forecast questions.

You can also access real-time forecast updates and 24/7 meteorological chat assistance on your [Clarity](#) app. Click [here](#) for login assistance.



Houston Pilots Port Trigger Update



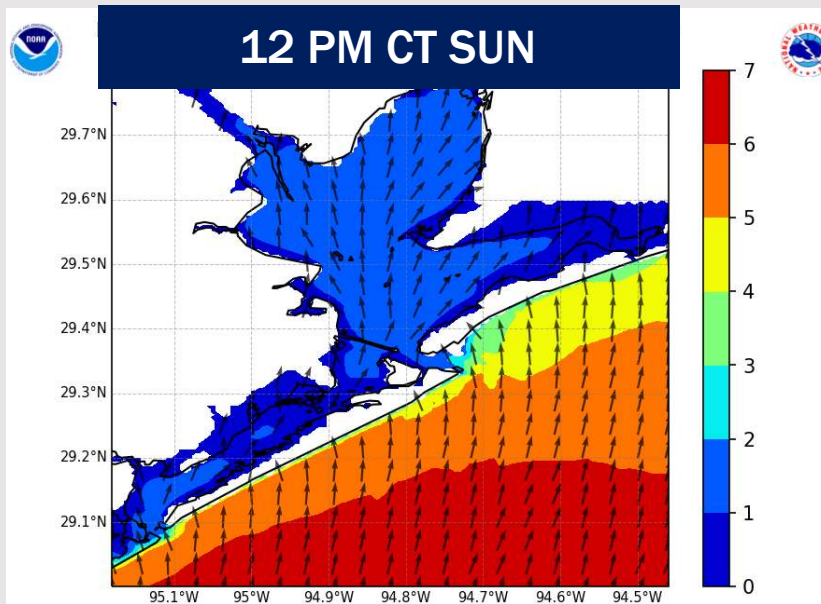
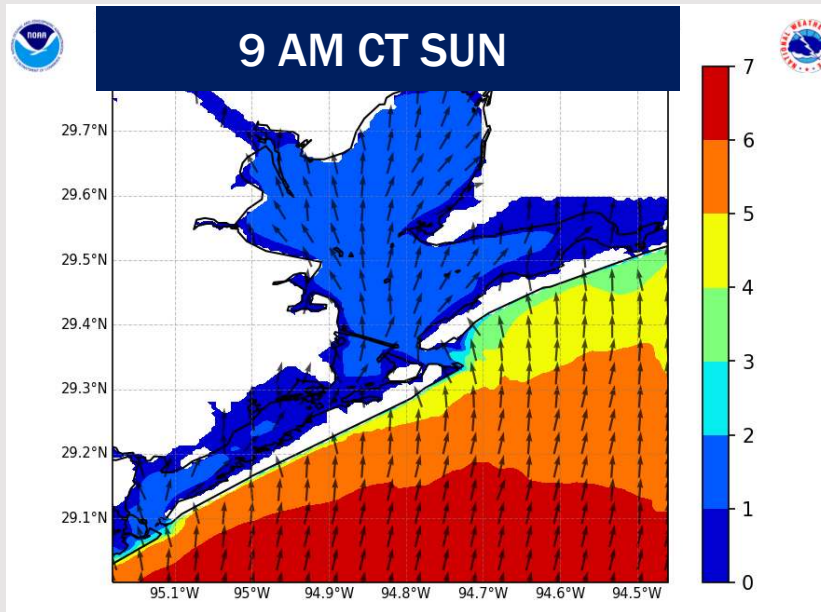
Port Condition	34 KTS+ Sustained Wind Trigger Reached at:	6 Foot Wave Trigger Reached at:	Time Remaining/Trigger Ends At:
Victor	—	—	—
Whiskey	—	—	—
X-Ray	—	—	—
Yankee	—	CURRENT	SAT 6 PM
Zulu	—	SAT 6 PM	SUN 6 PM

Port Condition	Trigger Definition	Trigger Reached?
Victor	Hurricane entering/developing in Gulf of Mexico that's a threat to the area	NO
Whiskey	72 hours prior to predicted sustained winds of 34+ KTS	NO
X-Ray	48 hours prior to predicted sustained winds of 34+ KTS or 6' wave height	PAST
Yankee	24 hours prior to predicted sustained winds of 34+ KTS or 6' wave height	YES
Zulu	12 hours prior to predicted sustained winds of 34+ KTS or 6' wave height	NO

NOTES: The potential for wave heights at the Boarding Station to reach 6+ ft will be possible beginning at 6 AM Sunday lasting through 6 PM Sunday.

Sustained winds are NOT favored to reach to 34 kts through the weekend.

Wave Height Forecast Update



Elevated, sustained winds out of the S/SE will cause elevated wave heights SUN. The threat is favored to remain for only the Boarding Station.

Expecting wave heights to begin to quickly increase after 3 AM SUN reaching 5 – 6 ft by 6 AM.

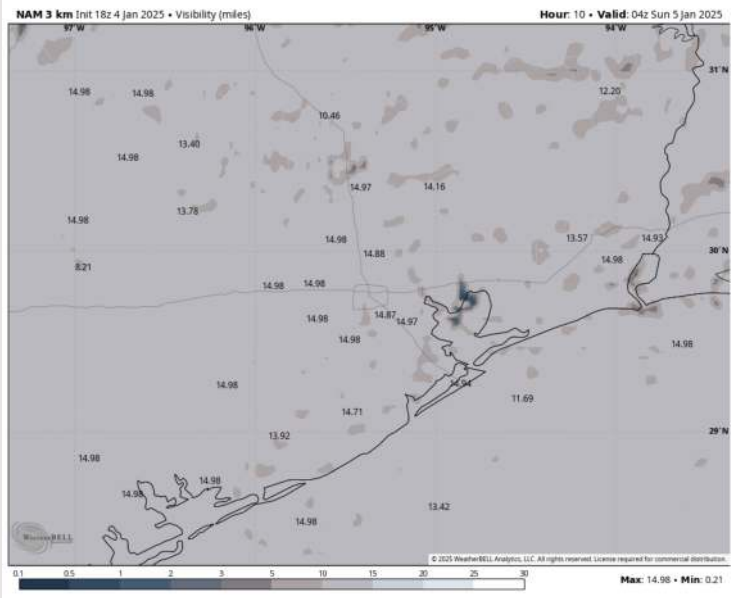
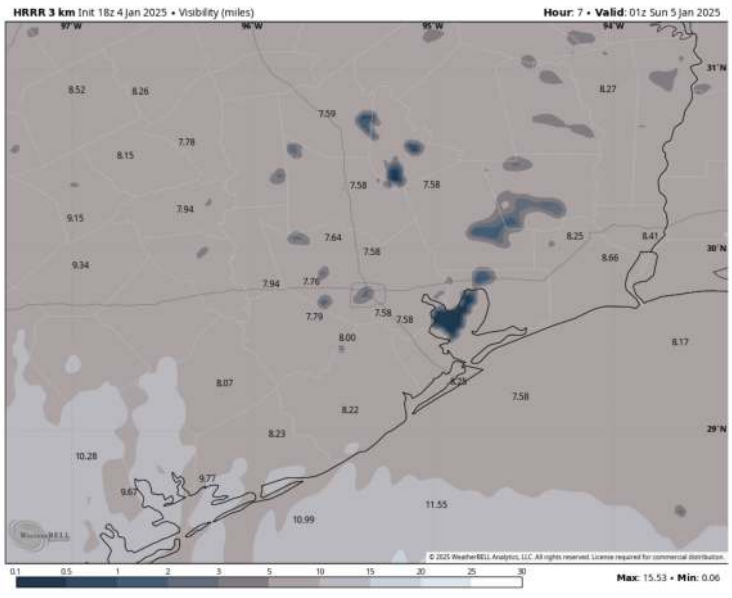
Favoring peak wave heights to be between 9 AM – 3 PM with wave heights of 6 – 7 ft.

After 3 PM wave heights will slowly decrease, dipping below 6 ft by 6 PM SUN and 4 ft or less by 9 AM MON.

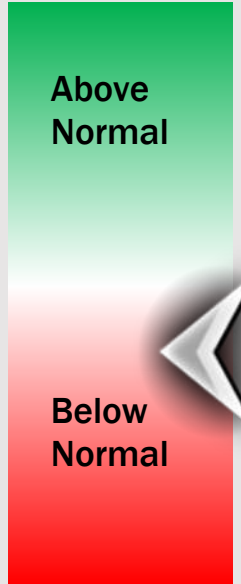
Houston Pilots Visibility Report



7 PM CST SAT VISIBILITY 10 PM CST SAT VISIBILITY



Confidence



TIMEFRAME DISCUSSED	THREAT
6 PM SAT to 2 AM SUN	Low

- Watching for a patchy fog / hazy sky risk for stations S of Morgan's Point beginning as early as 6 PM Saturday as winds shift out of the SE. Stations N of Morgan's Point not expected to have impacts.
- Hazy conditions may reduce visibility to 1 – 2 miles for stations S of Morgan's Point. Anticipating the greatest risk for isolated instances of patchy dense fog with visibility at 0.5 mile or less to be between Morgan's Point and Station 37/38.
- Favoring this fog /haze threat to become more localized after 11 PM Saturday as winds become more southerly and to fully clear out of the area by 2 AM Sunday.

Houston Pilots Extended Range Visibility Report



Tuesday 1/7/24

No fog concerns for Tuesday.

Forecast Confidence



Wednesday 1/8/25

No fog concerns for Wednesday.

Forecast Confidence



Thursday 1/9/25

No fog concerns for Thursday.

Forecast Confidence



Chance for Fog

Tuesday AM	Unlikely
Tuesday PM	Unlikely
Wednesday AM	Unlikely
Wednesday PM	Unlikely
Thursday AM	Unlikely
Thursday PM	Unlikely

Houston Pilots Visibility Chart (miles)



Forecast Confidence



Visibility	Sat 2 pm	Sat 3 pm	Sat 4 pm	Sat 5 pm	Sat 6 pm	Sat 7 pm	Sat 8 pm	Sat 9 pm	Sat 10 pm	Sat 11 pm	Sun 12 am	Sun 1 am	Sun 2 am	Sun 3 am	Sun 4 am	Sun 5 am	Sun 6 am	Sun 7 am	Sun 8 am	Sun 9 am	Sun 10 am	Sun 11 am	Sun 12 pm	Sun 1 pm
Houston Pilots N - 610 Bridge	10	10	10	10	10	10	10	10	10	10	10	10	10	10	10	10	10	10	10	10	9	10	10	10
Houston Pilots M - Kinder 1	10	10	10	10	10	10	10	10	10	10	10	10	10	10	10	10	10	10	10	9	9	10	10	10
Houston Pilots L - Greens Bayou	10	10	10	10	10	10	10	10	10	10	10	10	10	10	10	10	10	10	10	9	9	10	10	10
Houston Pilots K - Shell Crude	10	10	10	10	10	10	10	10	10	10	10	10	10	10	10	10	10	10	10	9	8	10	10	10
Houston Pilots J - Lynchburg Ferries	10	10	10	10	10	10	10	10	10	10	10	10	10	10	10	10	10	10	10	9	8	10	10	10
Houston Pilots I - Exxon 3	10	10	10	10	10	10	10	10	10	10	10	10	10	10	10	10	10	10	10	9	8	10	10	10
Houston Pilots H - Morgans Point	10	10	10	10	10	10	10	10	10	10	10	10	10	10	10	10	10	10	10	9	8	9	10	10
Houston Pilots G - 75/76	10	10	10	10	10	10	10	10	10	10	10	10	10	10	10	10	10	10	10	7.9	8	9	9	9
Houston Pilots F - 63/64	10	10	10	10	10	10	10	10	10	10	10	10	10	10	10	10	10	10	10	7.9	8	9	9	9
Houston Pilots E - 51/52	10	10	10	10	10	10	10	10	10	10	10	10	10	10	10	10	10	10	10	7.9	8	9	9	8
Houston Pilots D - 37/38	10	10	10	10	10	10	10	10	10	10	10	10	10	10	10	10	10	10	10	7.9	8	9	9	8
Houston Pilots C - 25/26	10	10	10	10	10	10	10	10	10	10	10	10	10	10	10	10	10	10	10	7.9	8	9	9	8
Houston Pilots B - 11/12	10	10	10	10	10	10	10	10	10	10	10	10	10	10	10	10	10	10	10	6.9	8	9	9	8
Houston Pilots A - 1 & 2 Bravo	10	10	10	10	10	10	10	10	10	10	10	10	9	10	10	10	10	10	10	6.9	6.9	7.9	7.9	9

NOTE: This is automated data that may/may not agree with the official BAM thinking that's found on the daily slides or special visibility report slides. This data should be used as a guide only

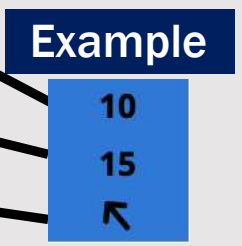
Houston Pilots Wind Chart



Forecast Confidence



Sustained wind 10 Knots
Gusts 15 Knots
Wind from the SE



Wind	Sat 2 pm	Sat 3 pm	Sat 4 pm	Sat 5 pm	Sat 6 pm	Sat 7 pm	Sat 8 pm	Sat 9 pm	Sat 10 pm	Sat 11 pm	Sun 12 am	Sun 1 am	Sun 2 am	Sun 3 am	Sun 4 am	Sun 5 am	Sun 6 am	Sun 7 am	Sun 8 am	Sun 9 am	Sun 10 am	Sun 11 am	Sun 12 pm	Sun 1 pm
Houston Pilots N - 610 Bridge	9 21 ↙	9 20 ↙	9 20 ↙	9 20 ↙	8 17 ↙	8 16 ↙	8 17 ↙	8 17 ↙	8 17 ↙	8 18 ↙	9 20 ↙	10 21 ↙	10 23 ↙	12 24 ↙	12 24 ↙	13 25 ↙	13 26 ↙	13 26 ↙	14 26 ↙	14 28 ↙	15 29 ↙	15 30 ↙	16 32 ↙	16 32 ↙
Houston Pilots M - Kinder 1	10 21 ↙	9 20 ↙	9 20 ↙	9 20 ↙	8 17 ↙	8 16 ↙	8 17 ↙	8 17 ↙	8 17 ↙	8 18 ↙	9 20 ↙	10 21 ↙	10 23 ↙	12 24 ↙	12 24 ↙	13 25 ↙	13 26 ↙	13 26 ↙	14 26 ↙	14 28 ↙	15 29 ↙	15 30 ↙	16 32 ↙	16 32 ↙
Houston Pilots L - Greens Bayou	10 21 ↙	10 20 ↙	9 20 ↙	9 18 ↙	8 17 ↙	8 16 ↙	8 17 ↙	8 17 ↙	8 17 ↙	8 18 ↙	9 20 ↙	9 21 ↙	10 22 ↙	10 23 ↙	12 24 ↙	13 25 ↙	13 26 ↙	13 26 ↙	14 26 ↙	14 26 ↙	14 28 ↙	15 29 ↙	16 31 ↙	16 31 ↙
Houston Pilots K - Shell Crude	10 21 ↙	10 20 ↙	10 18 ↙	9 18 ↙	9 17 ↙	8 16 ↙	8 16 ↙	8 17 ↙	8 17 ↙	8 18 ↙	9 20 ↙	9 21 ↙	10 22 ↙	10 23 ↙	12 24 ↙	13 25 ↙	13 26 ↙	13 26 ↙	14 26 ↙	14 26 ↙	14 28 ↙	15 29 ↙	16 31 ↙	15 31 ↙
Houston Pilots J - Lynchburg Ferries	10 21 ↙	10 20 ↙	10 18 ↙	9 18 ↙	9 17 ↙	8 16 ↙	8 16 ↙	8 17 ↙	8 17 ↙	8 17 ↙	8 18 ↙	9 20 ↙	10 22 ↙	10 23 ↙	10 24 ↙	12 25 ↙	12 25 ↙	13 25 ↙	13 26 ↙	13 26 ↙	14 28 ↙	14 29 ↙	16 30 ↙	16 30 ↙
Houston Pilots I - Exxon 3	12 21 ↙	12 21 ↙	12 20 ↙	12 20 ↙	12 18 ↙	10 17 ↙	10 17 ↙	10 17 ↙	12 17 ↙	13 18 ↙	13 20 ↙	14 21 ↙	15 23 ↙	16 24 ↙	17 24 ↙	17 25 ↙	17 26 ↙	17 26 ↙	17 26 ↙	17 26 ↙	17 26 ↙	16 28 ↙	17 29 ↙	17 29 ↙
Houston Pilots H - Morgans Point	12 21 ↙	12 20 ↙	12 20 ↙	12 20 ↙	12 17 ↙	10 17 ↙	10 17 ↙	10 17 ↙	12 17 ↙	13 18 ↙	13 20 ↙	14 21 ↙	15 23 ↙	16 24 ↙	16 24 ↙	17 25 ↙	17 25 ↙	17 25 ↙	17 26 ↙	17 26 ↙	17 26 ↙	16 28 ↙	17 29 ↙	17 29 ↙
Houston Pilots G - 75/76	13 22 ↙	12 21 ↙	12 20 ↙	12 20 ↙	12 18 ↙	12 17 ↙	12 17 ↙	12 17 ↙	13 17 ↙	13 20 ↙	15 22 ↙	15 23 ↙	17 24 ↙	17 26 ↙	18 26 ↙	20 28 ↙	20 29 ↙	20 29 ↙	20 29 ↙	20 29 ↙	20 29 ↙	18 29 ↙	18 30 ↙	17 29 ↙
Houston Pilots F - 63/64	13 21 ↙	12 21 ↙	12 20 ↙	12 18 ↙	12 17 ↙	10 16 ↙	10 17 ↙	12 17 ↙	12 17 ↙	13 20 ↙	15 22 ↙	15 23 ↙	17 24 ↙	17 26 ↙	18 26 ↙	20 28 ↙	20 29 ↙	20 29 ↙	20 29 ↙	20 29 ↙	20 29 ↙	18 29 ↙	18 30 ↙	17 29 ↙
Houston Pilots E - 51/52	13 21 ↙	12 20 ↙	10 18 ↙	10 17 ↙	10 16 ↙	10 15 ↙	10 16 ↙	10 17 ↙	12 17 ↙	13 20 ↙	14 22 ↙	15 23 ↙	17 24 ↙	17 26 ↙	18 28 ↙	20 29 ↙	20 29 ↙	20 29 ↙	20 30 ↙	20 29 ↙	20 29 ↙	18 29 ↙	18 29 ↙	17 29 ↙
Houston Pilots D - 37/38	13 21 ↙	12 20 ↙	10 17 ↙	10 17 ↙	10 15 ↙	10 15 ↙	10 16 ↙	10 17 ↙	12 17 ↙	13 20 ↙	14 22 ↙	15 24 ↙	16 24 ↙	17 26 ↙	18 28 ↙	20 29 ↙	20 29 ↙	20 29 ↙	20 30 ↙	20 29 ↙	20 29 ↙	18 29 ↙	18 29 ↙	17 29 ↙
Houston Pilots C - 25/26	13 21 ↙	12 18 ↙	10 17 ↙	10 16 ↙	10 15 ↙	9 14 ↙	10 16 ↙	10 17 ↙	12 17 ↙	13 20 ↙	14 22 ↙	15 24 ↙	16 25 ↙	17 28 ↙	17 28 ↙	18 29 ↙	20 30 ↙	20 29 ↙	20 29 ↙	20 29 ↙	20 29 ↙	18 29 ↙	18 29 ↙	17 29 ↙
Houston Pilots B - 11/12	12 20 ↙	10 17 ↙	10 16 ↙	9 15 ↙	9 15 ↙	8 14 ↙	9 15 ↙	9 16 ↙	10 17 ↙	12 20 ↙	13 22 ↙	14 23 ↙	15 24 ↙	16 26 ↙	16 26 ↙	17 28 ↙	17 29 ↙	17 29 ↙	17 29 ↙	17 29 ↙	17 29 ↙	17 28 ↙	17 28 ↙	17 28 ↙
Houston Pilots A - 1 & 2 Bravo	13 21 ↙	12 18 ↙	10 16 ↙	10 16 ↙	10 15 ↙	10 15 ↙	10 16 ↙	12 17 ↙	13 18 ↙	14 21 ↙	15 23 ↙	16 24 ↙	17 26 ↙	18 28 ↙	20 29 ↙	20 30 ↙	20 30 ↙	20 30 ↙	20 31 ↙	20 31 ↙	20 31 ↙	20 31 ↙	20 30 ↙	18 30 ↙

NOTE: This is automated data that may/may not agree with the official BAM thinking that's found on the daily slides. This data should be used as a guide only.

Houston Pilots: SAT. 1/4/2025

Forecast Discussion

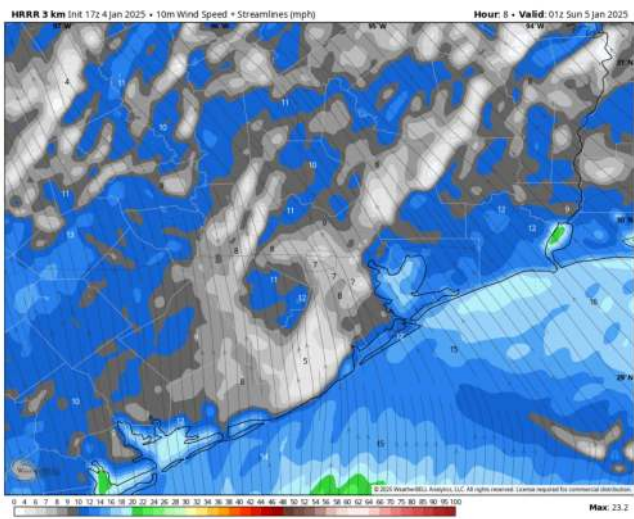
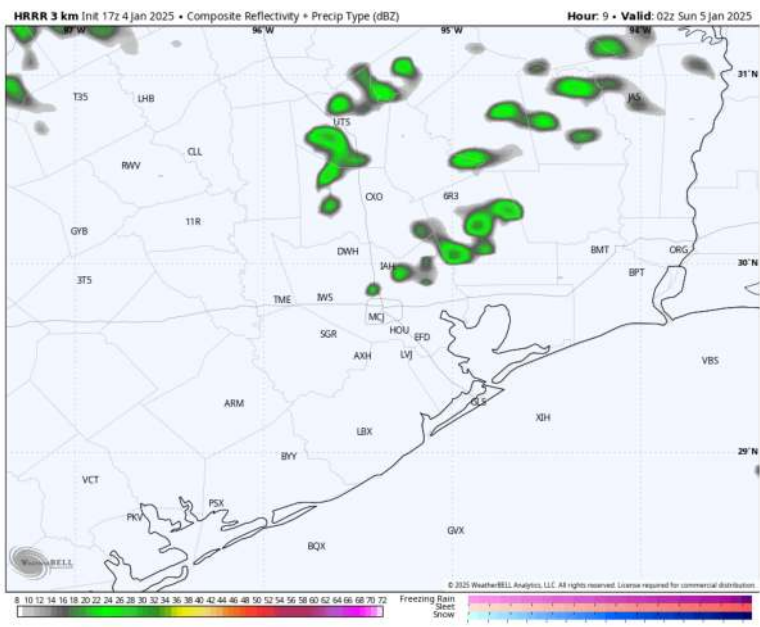
Precip: Isolated (20%) rain showers are possible through 6 PM before conditions dry out for the rest of the day.

Wind: Winds will be out of the SE through the PM. **N of Morgan's Point:** Winds will be 3 – 8 kts throughout the rest of the day. **S of Morgan's Point:** Winds will be 7 – 12 kts for the rest of the day.

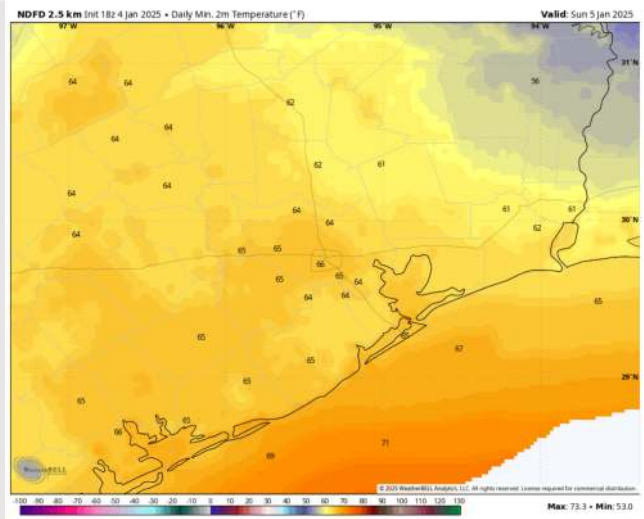
Low Temps: **N of Morgan's Point:** Mid 60 F. **S of Morgan's Point:** Mid to upper 60's F.

Visibility: Watching for a very localized fog risks for all stations S of Morgan's Point this PM. See visibility slide.

Precip Image: 8 PM CT



Wind Speed:
7 PM CT



Low Temps
SUN AM

Houston Pilots: SUN. 1/5/2025



Forecast Discussion

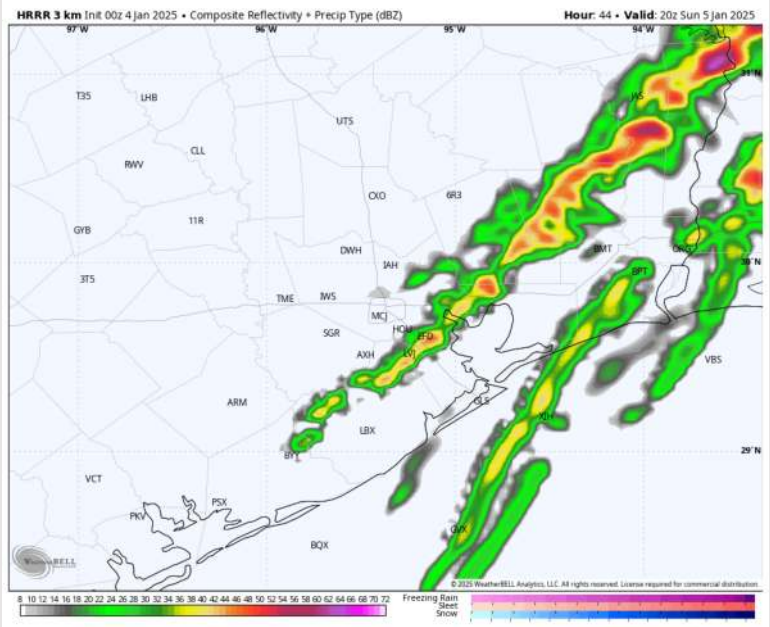
Precip: Beginning at 6 AM, light showers will be possible through 12 PM before a line of strong/severe storms work in through 5 PM before rain chances exit for the day. **Risks will be for wind gusts of 45-55 kts, small hail, and an isolated tornado risk.**

Wind: Winds will be out of the S/SE through 6 PM before shifting to be out of the N/NW for the rest of the day. **N of Morgan's Point:** Winds will be at 8 - 13 kts throughout the day. **S of Morgan's Point:** Winds will be at 15 - 20 kts through 6 PM before winds increase to 25 - 30 kts for the rest of the day. **Non-thunderstorm wind gusts of 20 - 25 kts possible for stations N of Morgan's Point throughout Sunday.** After 6 PM wind gusts of 30-35 kts will be possible for stations S of Morgan's Point.

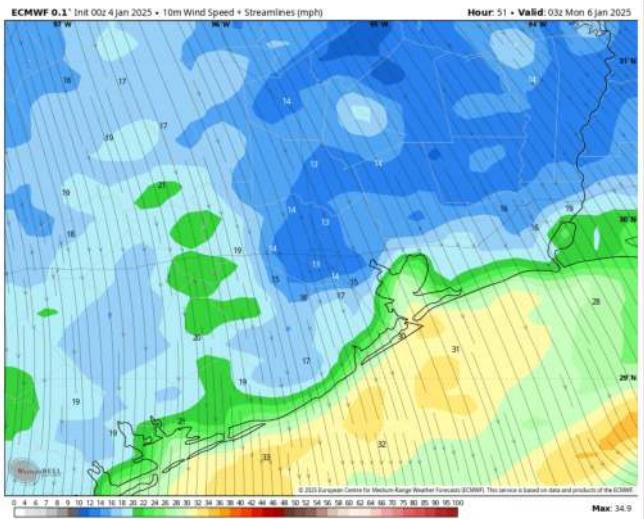
High Temps: N of Morgan's Point: Mid-70s F. S of Morgan's Point: Low 70s F.

Visibility: No fog concerns on Sunday, however, <1.0 mile visibility will be possible as thunderstorms work through.

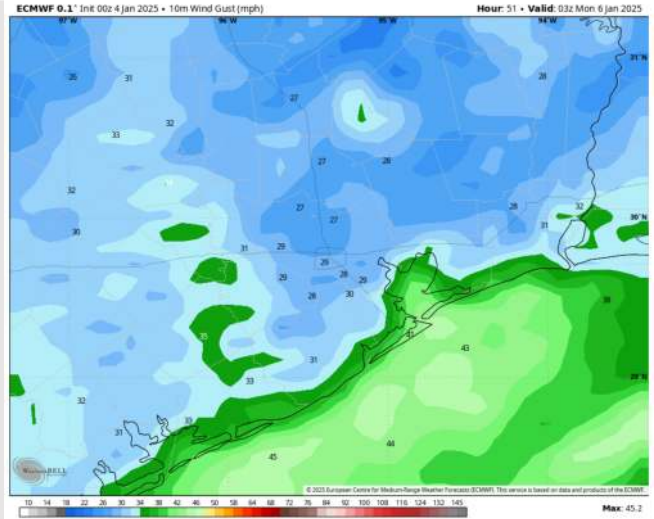
Precip Image: 2 PM CT



Wind Speed
9 PM CT



Max Wind
Gusts Sunday



Houston Pilots: MON. 1/6/2025



Forecast Discussion

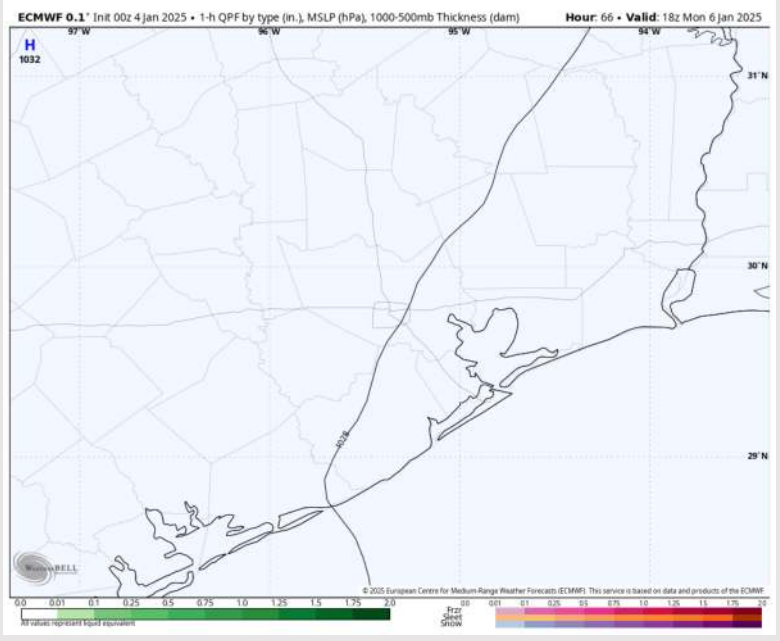
Precip: Favoring dry conditions for all stations on Monday.

Wind: Winds will generally be out of the N/NW throughout Monday. **N of Morgan's Point:** Winds will be at 9 – 14 kts throughout the day Monday. **S of Morgan's Point:** Winds will be at 17 – 22 kts through 12 PM before decreasing to 15 – 20 kts for the rest of the day Monday.

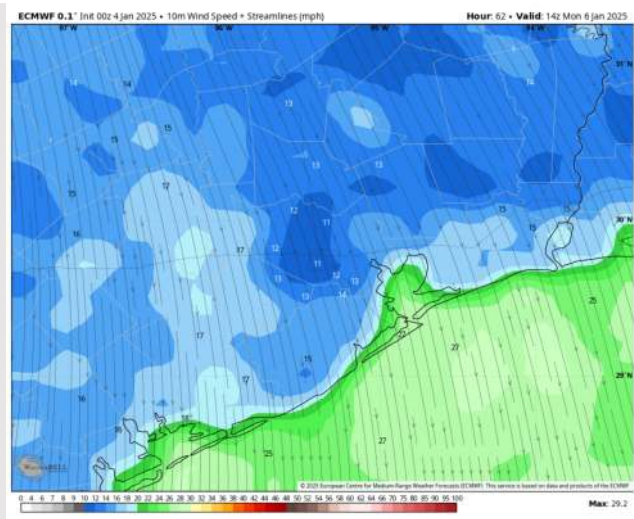
High Temps: **N of Morgan's Point:** Mid 40s F. **S of Morgan's Point:** Mid 40s F

Visibility: Not anticipating any visibility concerns for Monday.

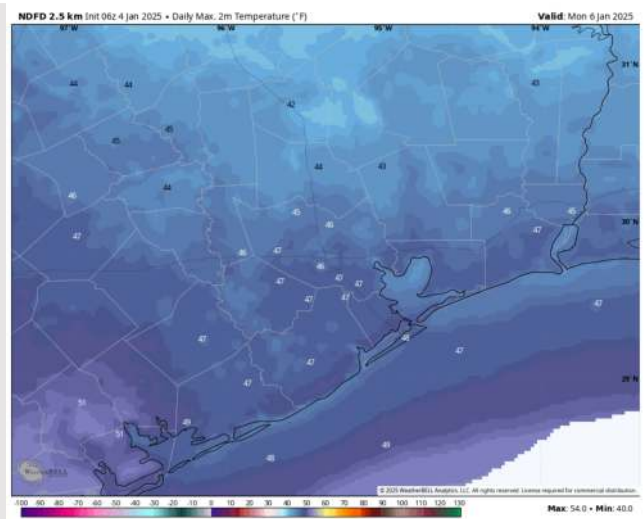
Precip Image: 12 PM CT



Wind Speed:
7 PM CT



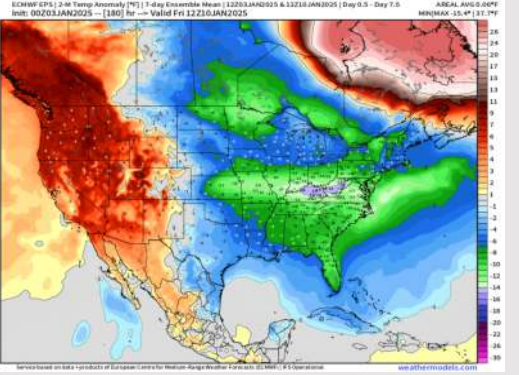
High Temps
Monday



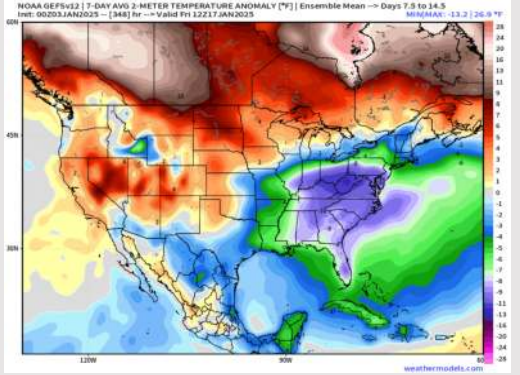
Houston Pilots: 1/4/25



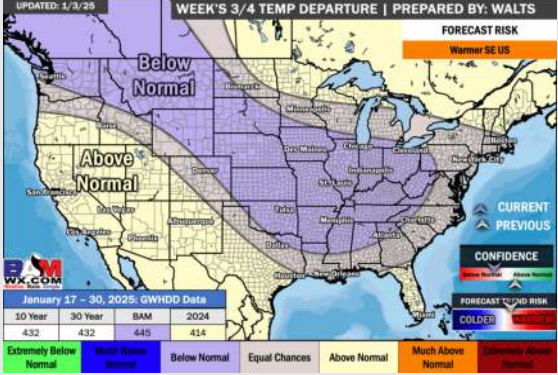
Next 7 Day Temperature Departure



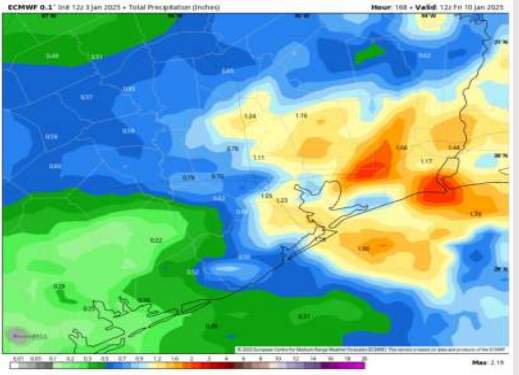
8-14 Day Temperature Departure



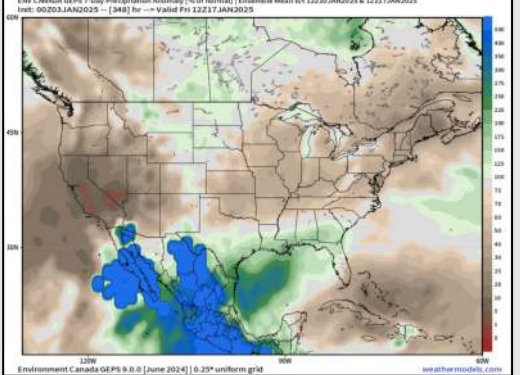
15-30 Day Temperature Departure



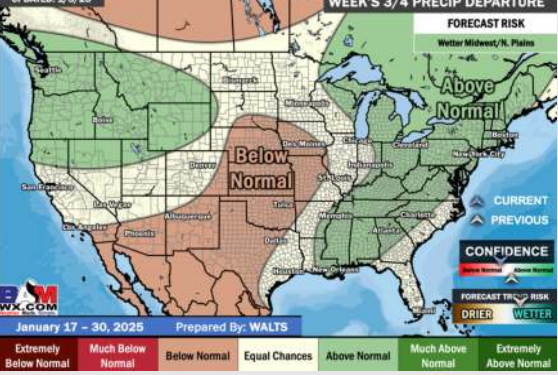
Next 7 Day Total Precipitation



8-14 Day % of Average Precip.



15-30 Day % of Average Precip.



- Temps are expected to be below normal for the week 1 timeframe. Rain favored over the weekend and then drier conditions in play for the start of next week.
- Below normal temperatures and above normal rainfall are expected for week 2.
- Above normal temperatures and near normal precipitation chances are expected for the weeks 3/4 timeframe.