

Houston Pilots Forecast Package



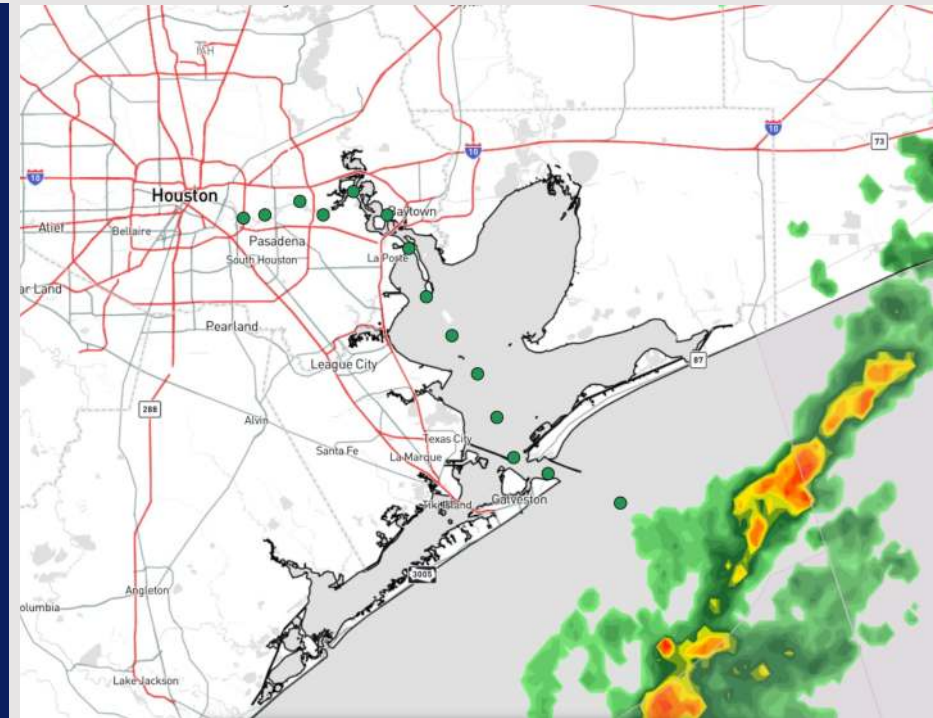
Updated: 6:35 PM CT

Thursday, January 30, 2025

Forecaster: Xander Lowry

Weather Headlines

- **Showers are currently helping fog start to dissipate in the Bay. Fog will continue to clear out until completely clearing out after 7:30PM. See visibility slides for more details!**
- **We are currently in Zulu Port conditions as max wave heights have reached 6ft. See wave height slide for more information!**
- **Bulk of precip has exited all stations for the evening.**



Current Radar: 6:35 PM CT

As always, please do not hesitate to reach out to us with any forecast questions at **(317)-560-8122**. Press **1** for forecast questions.

You can also access real-time forecast updates and 24/7 meteorological chat assistance on your **Clarity** app. Click [here](#) for login assistance.



Houston Pilots Port Trigger Update



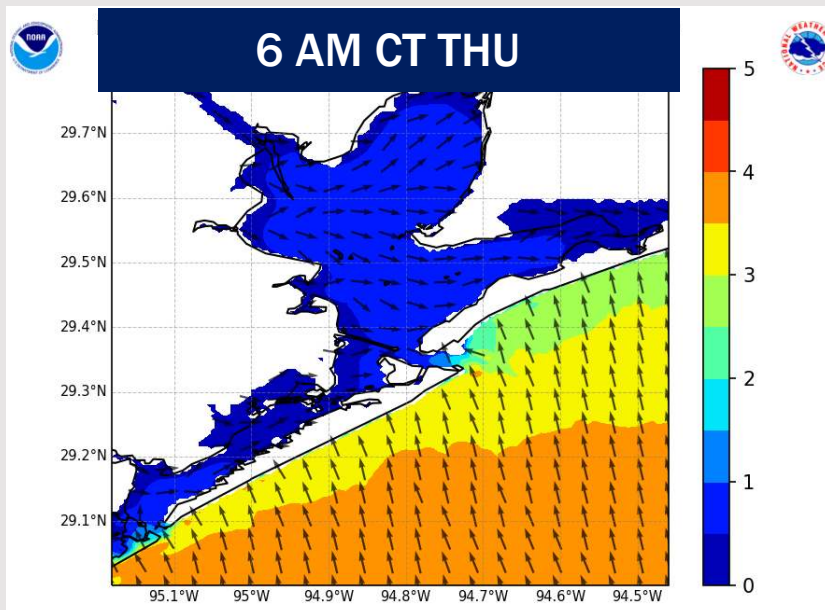
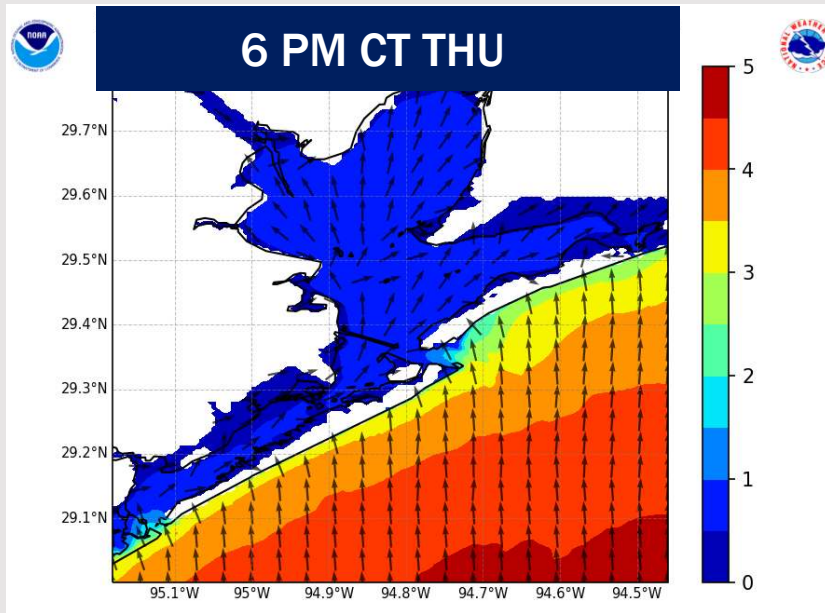
Port Condition	34 KTS+ Sustained Wind Trigger Reached at:	6 Foot Wave Trigger Reached at:	Time Remaining/Trigger Ends At:
Victor	—	—	—
Whiskey	—	—	—
X-Ray	—	—	PAST
Yankee	—	—	PAST
Zulu	—	CURRENT	6 AM FRI

Port Condition	Trigger Definition	Trigger Reached?
Victor	Hurricane entering/developing in Gulf of Mexico that's a threat to the area	N/A
Whiskey	72 hours prior to predicted sustained winds of 34+ KTS	N/A
X-Ray	48 hours prior to predicted sustained winds of 34+ KTS or 6' wave height	PAST
Yankee	24 hours prior to predicted sustained winds of 34+ KTS or 6' wave height	PAST
Zulu	12 hours prior to predicted sustained winds of 34+ KTS or 6' wave height	YES

NOTES:

With increased winds ahead of a front on Thursday, maximum waves are anticipated to reach 6' by 2PM THU for the Boarding Station ONLY. See wave height slide for more information!

Wave Height Forecast Update



Elevated wave heights of 5' – 6' are in play throughout this afternoon and into the overnight.

Modeled wave height images may be slightly underdone, so we are not completely ruling out a few 6' waves at the Boarding Station.

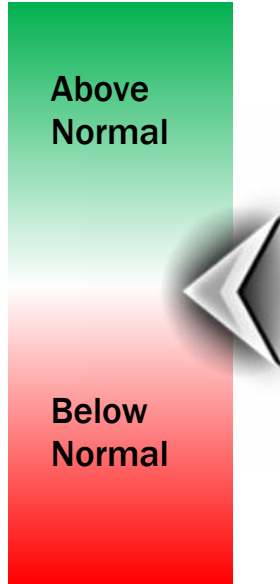
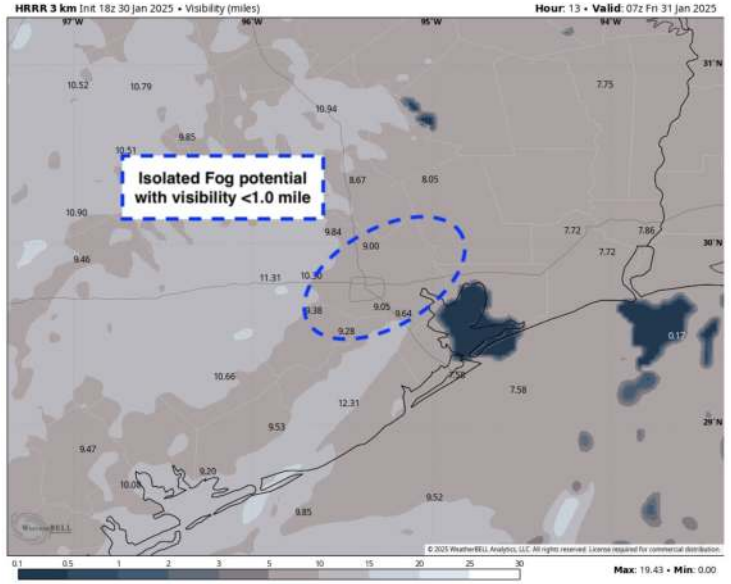
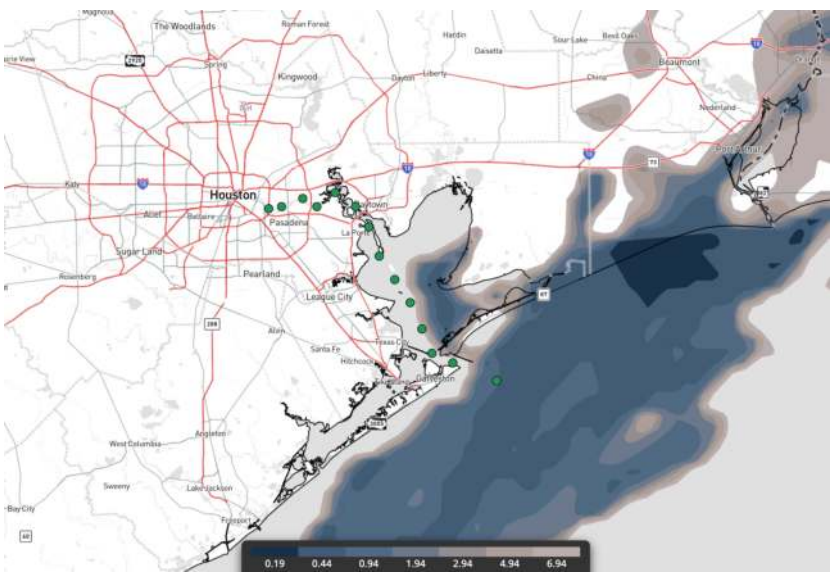
By 6AM FRI, we are favoring wave heights to be at or below 4ft.

Houston Pilots Visibility Report



CURRENT VISIBILITY (6:15 PM CST) 1 AM CST THU VISIBILITY

Confidence



TIMEFRAME DISCUSSED	THREAT
CURRENT – 5 AM FRI	Low

- Lingering sea fog will continue to be pushed out by the passing front. Favoring fog to exit all stations by 7:30 PM CT. After a brief lull in fog, patchy pockets of fog can work back in for all stations after 9 PM CT.
- The greatest risk will be from 11 PM THU – 3 AM CT FRI for stations S of Morgan’s point and N of 11/12. Isolated pockets of visibility <1.0 mile will be possible across the E portions of the Bay. Stations N of Morgan’s Point will be at risk of isolated fog, with most locations seeing no impacts.
- By 3 AM CT FRI fog will begin to dissipate, with all fog working out by 6 AM CT FRI morning.

Houston Pilots Extended Range Visibility Report



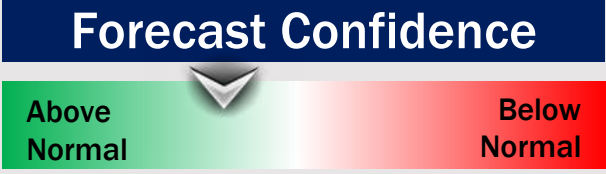
Sunday 2/2/25

Monitoring an isolated, patchy sea fog risk for all stations Sunday AM. Confidence is well below normal.



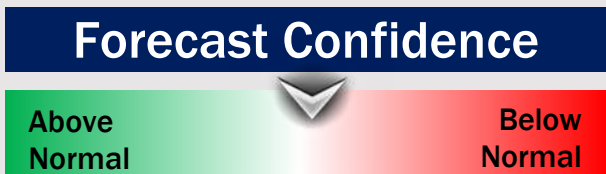
Monday 2/3/25

Monitoring a patchy sea fog risk for Stations S of Morgan's Point for Monday AM.



Tuesday 2/4/25

Watching for sea-fog threats for Stations S. of Morgan's Point Tuesday.



Chance for Fog

Sunday AM	Low-End
Sunday PM	Unlikely
Monday AM	Low-End
Monday PM	Unlikely
Tuesday AM	Low-End
Tuesday PM	Low-End

Houston Pilots Visibility Chart (miles)



Forecast Confidence



Visibility	Thu 2 pm	Thu 3 pm	Thu 4 pm	Thu 5 pm	Thu 6 pm	Thu 7 pm	Thu 8 pm	Thu 9 pm	Thu 10 pm	Thu 11 pm	Fri 12 am	Fri 1 am	Fri 2 am	Fri 3 am	Fri 4 am	Fri 5 am	Fri 6 am	Fri 7 am	Fri 8 am	Fri 9 am	Fri 10 am	Fri 11 am	Fri 12 pm	Fri 1 pm
Houston Pilots N - 610 Bridge	3.9	3.9	3.9	3.9	4.9	6.9	6.9	8	8	6.9	5.9	6.9	6.9	9	10	10	10	10	10	10	10	10	10	10
Houston Pilots M - Kinder 1	3.9	3.9	3.9	3.9	4.9	6.9	6.9	6.9	8	6.9	5.9	6.9	6.9	9	10	10	10	10	10	10	10	10	10	10
Houston Pilots L - Greens Bayou	4.9	3.9	3.9	3.9	4.9	5.9	6.9	6.9	6.9	5.9	5.9	5.9	5.9	8	10	10	10	10	10	10	10	10	10	10
Houston Pilots K - Shell Crude	4.9	3.9	3.9	3.9	4.9	5.9	6.9	6.9	6.9	5.9	5.9	5.9	5.9	6.9	10	10	10	10	10	10	10	10	10	10
Houston Pilots J - Lynchburg Ferries	3.9	3.9	3.9	3.9	4.9	5.9	6.9	6.9	6.9	5.9	5.9	5.9	5.9	6.9	10	10	10	10	10	10	10	10	10	10
Houston Pilots I - Exxon 3	4.9	2.9	3.9	2.9	4.9	5.9	6.9	6.9	6.9	5.9	4.9	4.9	5.9	6.9	10	10	10	10	10	10	10	10	10	10
Houston Pilots H - Morgans Point	3.9	2	2.5	2.9	4.9	5.9	6.9	6.9	6.9	5.9	4.9	4.9	4.9	6.9	8	10	10	10	10	10	10	10	10	10
Houston Pilots G - 75/76	1.1	0.8	0.5	2	3.9	4.9	4.9	4.9	4.9	4.9	4.9	3.9	4.9	4.9	5.9	6.9	8	10	10	10	10	10	10	10
Houston Pilots F - 63/64	1.1	0.8	0.5	2	3.9	4.9	4.9	4.9	4.9	4.9	4.9	3.9	3.9	4.9	5.9	6.9	8	10	10	9	10	10	10	10
Houston Pilots E - 51/52	1.1	1.6	0.5	0.3	2.5	4.9	4.9	4.9	4.9	4.9	4.9	3.9	4.9	4.9	4.9	6.9	6.9	10	10	8	9	10	10	10
Houston Pilots D - 37/38	1.1	2	0.8	0.3	1.1	4.9	4.9	4.9	4.9	4.9	4.9	3.9	4.9	4.9	4.9	6.9	6.9	10	10	8	9	10	10	10
Houston Pilots C - 25/26	1.6	2	0.8	0.3	2	4.9	4.9	4.9	4.9	4.9	4.9	3.9	4.9	4.9	4.9	6.9	6.9	10	10	9	10	10	10	10
Houston Pilots B - 11/12	1.1	2	0.8	0.3	1.1	2.9	4.9	4.9	4.9	4.9	4.9	3.9	4.9	4.9	4.9	6.9	6.9	10	10	9	10	10	10	10
Houston Pilots A - 1 & 2 Bravo	1.1	2	0.8	0.5	1.1	1.6	4.9	3.9	3.9	4.9	4.9	4.9	4.9	4.9	5.9	6.9	6.9	10	10	9	10	10	10	10

NOTE: This is automated data that may/may not agree with the official BAM thinking that's found on the daily slides or special visibility report slides. This data should be used as a guide only

Houston Pilots Wind Chart



Sustained wind 10 Knots

Gusts 15 Knots

Wind from the SE

Example

10

15

↙

Wind	Thu 2 pm	Thu 3 pm	Thu 4 pm	Thu 5 pm	Thu 6 pm	Thu 7 pm	Thu 8 pm	Thu 9 pm	Thu 10 pm	Thu 11 pm	Fri 12 am	Fri 1 am	Fri 2 am	Fri 3 am	Fri 4 am	Fri 5 am	Fri 6 am	Fri 7 am	Fri 8 am	Fri 9 am	Fri 10 am	Fri 11 am	Fri 12 pm	Fri 1 pm
Houston Pilots N - 610 Bridge	14 28 ↑	13 28 ↑	12 24 →	10 22 →	9 18 →	8 15 →	6 13 →	6 12 →	5 10 →	3 9 →	3 8 →	3 7 →	3 8 →	5 10 →	6 12 →	6 12 →	6 14 →	7 15 →	8 17 →	8 18 →	9 20 →	10 22 →	12 23 →	12 23 →
Houston Pilots M - Kinder 1	14 28 ↑	13 28 ↑	12 24 →	10 22 →	9 18 →	8 15 →	6 13 →	6 12 →	5 10 →	3 9 →	3 8 →	3 7 →	3 8 →	3 9 →	5 12 →	6 12 →	6 13 →	7 14 →	8 16 →	8 18 →	9 20 →	10 22 →	12 23 →	12 23 →
Houston Pilots L - Greens Bayou	14 28 ↑	13 26 ↑	12 24 →	10 22 →	9 18 →	8 15 →	6 13 →	6 12 →	5 10 →	3 9 →	3 7 →	3 7 →	3 8 →	3 9 →	5 12 →	6 12 →	6 13 →	6 14 →	8 16 →	8 17 →	9 20 →	10 22 →	12 22 →	12 22 →
Houston Pilots K - Shell Crude	14 26 ↑	13 26 ↑	12 24 →	10 22 →	9 18 →	8 15 →	6 13 →	6 12 →	5 10 →	3 9 →	3 7 →	3 7 →	3 8 →	3 9 →	5 10 →	6 12 →	6 13 →	6 14 →	8 16 →	8 17 →	9 20 →	10 22 →	12 22 →	12 22 →
Houston Pilots J - Lynchburg Ferries	14 26 ↑	13 26 ↑	13 24 →	10 22 →	9 18 →	7 15 →	6 13 →	6 12 →	5 9 →	3 8 →	3 7 →	3 6 →	3 7 →	3 9 →	5 10 →	5 10 →	6 12 →	6 13 →	7 15 →	8 17 →	9 20 →	10 21 →	12 22 →	12 22 →
Houston Pilots I - Exxon 3	15 26 ↑	15 25 ↑	14 23 ↑	13 22 →	12 18 →	10 16 →	9 14 →	8 13 →	7 12 →	6 10 →	6 8 →	5 8 →	6 8 →	6 9 →	7 12 →	8 12 →	8 13 →	9 14 →	10 16 →	10 17 →	12 18 →	13 21 →	13 22 →	13 22 →
Houston Pilots H - Morgans Point	15 26 ↑	15 25 ↑	14 23 ↑	13 22 →	12 18 →	10 16 →	8 14 →	8 13 →	7 12 →	6 9 →	6 8 →	5 7 →	5 8 →	6 9 →	6 10 →	7 12 →	8 13 →	8 13 →	9 15 →	10 16 →	10 18 →	12 21 →	13 21 →	13 21 →
Houston Pilots G - 75/76	15 26 ↑	15 26 ↑	15 24 ↑	14 22 →	13 20 →	10 16 →	10 15 →	9 14 →	8 13 →	7 10 →	6 8 →	6 7 →	6 8 →	6 9 →	8 12 →	8 12 →	9 13 →	10 14 →	10 16 →	12 18 →	13 21 →	13 22 →	13 22 →	13 22 →
Houston Pilots F - 63/64	16 26 ↑	15 26 ↑	15 24 ↑	14 22 →	13 20 →	10 16 →	10 15 →	9 14 →	8 13 →	7 10 →	6 8 →	5 7 →	6 8 →	6 9 →	7 12 →	8 12 →	8 13 →	10 14 →	10 16 →	12 18 →	13 20 →	13 22 →	13 22 →	13 22 →
Houston Pilots E - 51/52	16 26 ↑	15 25 ↑	15 24 ↑	14 22 →	13 20 →	10 16 →	10 15 →	9 14 →	8 13 →	7 10 →	6 8 →	5 7 →	5 7 →	6 8 →	7 10 →	8 10 →	8 12 →	9 13 →	10 16 →	12 17 →	13 20 →	13 21 →	13 21 →	13 21 →
Houston Pilots D - 37/38	16 26 ↑	15 25 ↑	15 24 ↑	14 22 →	13 20 →	10 16 →	10 15 →	9 14 →	8 13 →	7 10 →	6 8 →	3 6 →	5 7 →	6 8 →	6 10 →	7 10 →	8 12 →	9 13 →	10 15 →	12 17 →	13 20 →	13 21 →	13 21 →	13 21 →
Houston Pilots C - 25/26	16 26 ↑	15 25 ↑	15 24 ↑	14 22 →	13 20 →	10 17 →	10 15 →	9 14 →	8 13 →	7 10 →	6 8 →	3 6 →	5 7 →	6 8 →	6 9 →	7 10 →	8 12 →	8 13 →	10 15 →	10 17 →	13 20 →	13 21 →	13 21 →	13 21 →
Houston Pilots B - 11/12	16 25 ↑	15 24 ↑	15 23 ↑	14 22 →	13 20 →	10 17 →	10 15 →	9 14 →	8 13 →	7 10 →	6 8 →	3 6 →	3 7 →	5 8 →	6 9 →	6 9 →	7 12 →	8 13 →	9 15 →	10 17 →	12 20 →	13 20 →	13 20 →	13 20 →
Houston Pilots A - 1 & 2 Bravo	17 26 ↑	17 28 ↑	17 26 ↑	15 24 →	15 22 →	13 20 →	13 18 →	10 16 →	10 15 →	8 13 →	6 9 →	6 7 →	6 8 →	6 9 →	7 10 →	8 10 →	8 13 →	10 14 →	10 16 →	13 18 →	13 21 →	14 22 →	14 22 →	14 22 →

NOTE: This is automated data that may/may not agree with the official BAM thinking that's found on the daily slides. This data should be used as a guide only.

Forecast Discussion

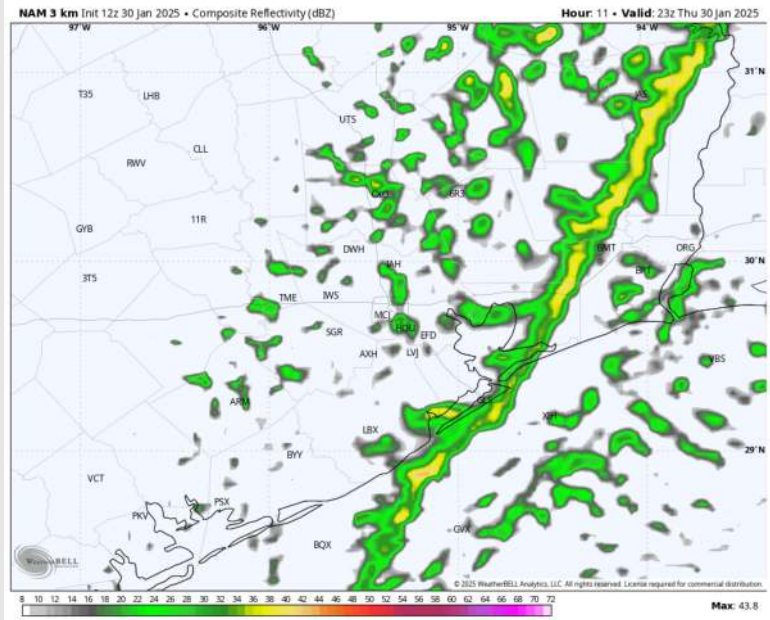
Precip: Favoring rain showers to linger through 7PM. From 2PM – 6PM, a few strong to severe storms, will be possible. Isolated hail and brief gusts of up to 45 - 50kts will be possible for all stations!

Wind: Winds will be out of the S/SE through 3 PM, shifting clockwise out of the W/SW by 6 PM. **N of Morgan's Point:** Winds will be at 10 – 15 kts decreasing to 2 – 7 kts after 5 PM. **S of Morgan's Point:** Winds will be at 15 – 20 kts decreasing to 7 – 12 kts after 6 PM. **Non-Thunderstorm wind gusts of 20 – 30 kts will be in play for all Stations through 6PM, before calming.**

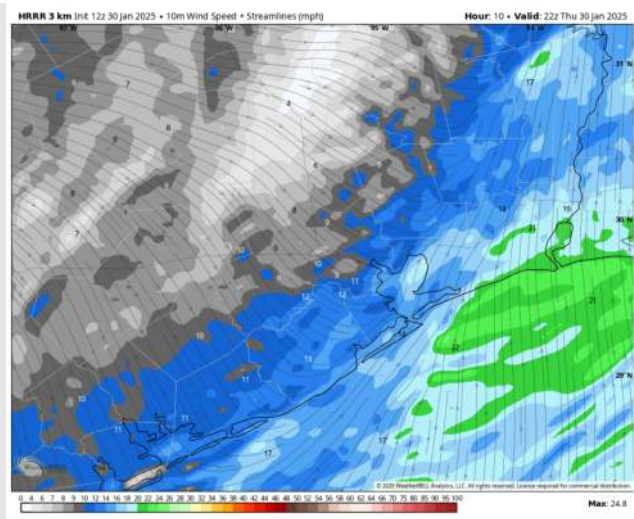
Low Temps: **N of Morgan's Point:** Near 50 F. **S of Morgan's Point:** Lower 50s F.

Visibility: Hazy conditions hang around for Stations N. of Morgan's Point, while dense fog will continue to gradually clear out for Stations S. of Morgan's Point. Low-end threat for non-sea fog this evening/tomorrow AM. See visibility slides for more details.

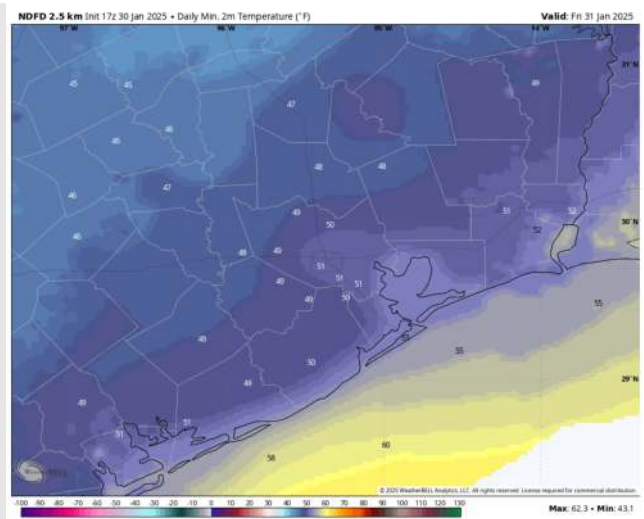
Precip Image: 5 PM CT



**Wind Speed:
4 PM CT**



**Low Temps
FRI AM**



Houston Pilots: FRI. 1/31/2025



Forecast Discussion

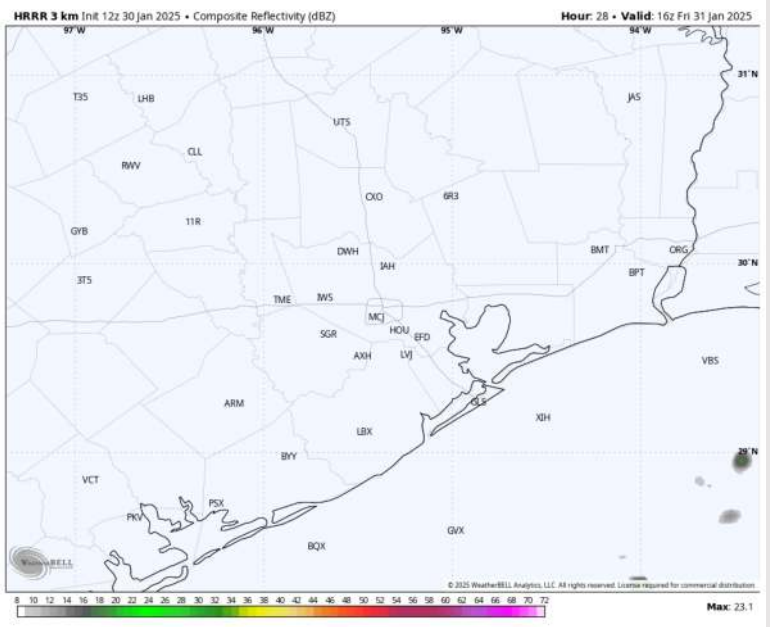
Precip: A few isolated pockets of drizzle will be possible for Station 11/12 and the Boarding Station through ~3AM, before dry conditions take hold the rest of the day.

Wind: Winds will start out of the W / WSW through 10AM before veering out of the NW, remaining there for the rest of Friday. **N of Morgan's Point:** Winds will be at 5 – 10 kts throughout Friday. **S of Morgan's Point:** Winds will be at 3 – 8 kts through the day with a brief increase in winds of 8 – 13 kts from 10AM to 6PM. **Wind gusts of 20 – 25 kts will be possible for all Stations from 10AM to 6PM.**

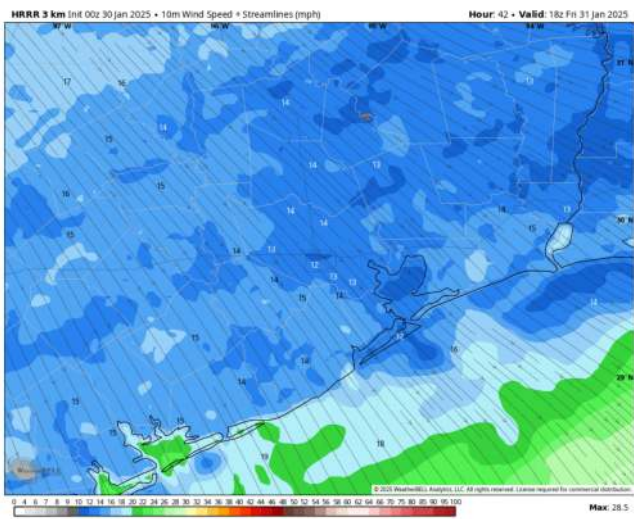
High Temps: **N of Morgan's Point:** Upper 60s to lower 70s F. **S of Morgan's Point:** Low to Mid 60s F.

Visibility: Favoring a non-sea fog risk for stations N of Morgan's Point through 3AM. See visibility graphic for additional thoughts.

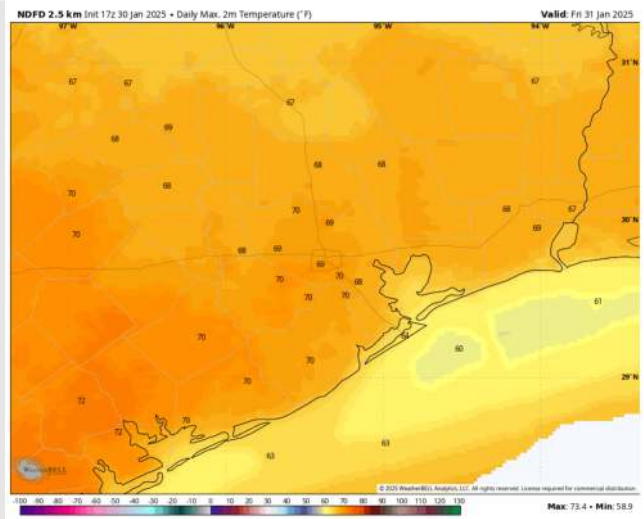
Precip Image: 10 AM CT



Wind Speed:
12 PM CT



High Temps
Friday



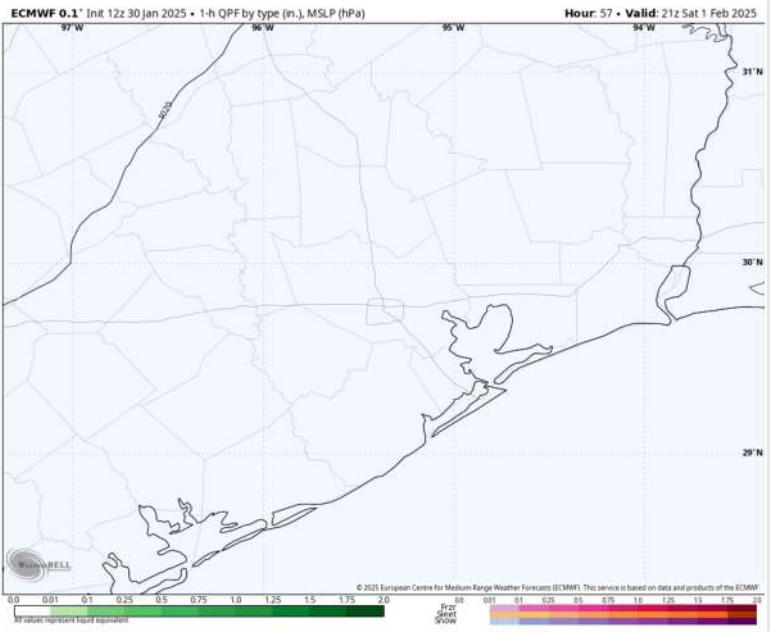
Houston Pilots: SAT. 2/1/2025



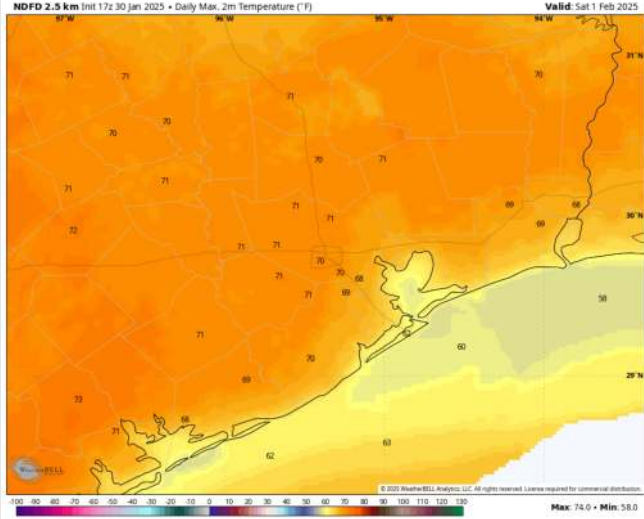
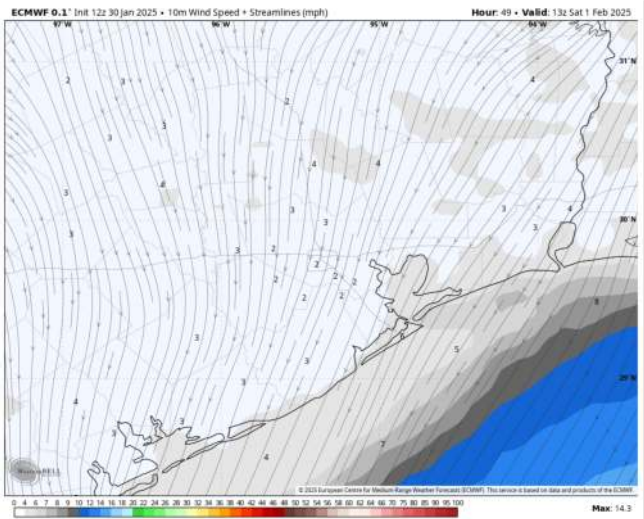
Forecast Discussion

- Precip:** Favoring dry conditions for Saturday.
- Wind:** Winds will start the day out of the N, turning clockwise throughout the day to end up out of the S/SE by 3PM. **N of Morgan's Point:** Winds will be at 2 – 7 kts for all of Saturday. **S of Morgan's Point:** Winds will be at 4 – 9 kts for all of Saturday.
- High Temps:** **N of Morgan's Point:** Near 70 F. **S of Morgan's Point:** Upper 50s F to low 60s F.
- Visibility:** No visibility risks favored for Saturday.

Precip Image: 3 PM CT



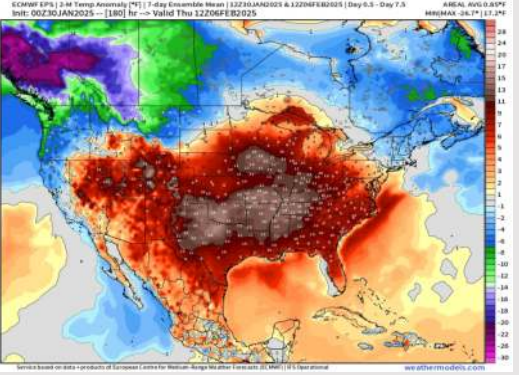
Wind Speed
7 AM CT



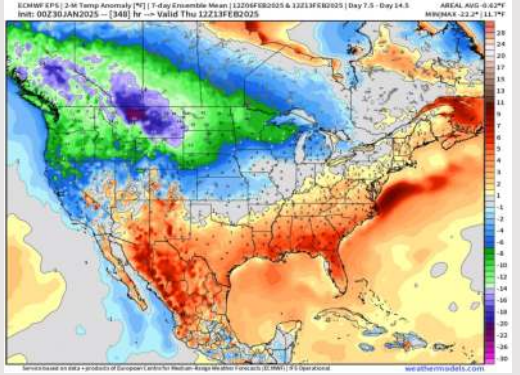
High Temps
Saturday

Houston Pilots: 1/30/25

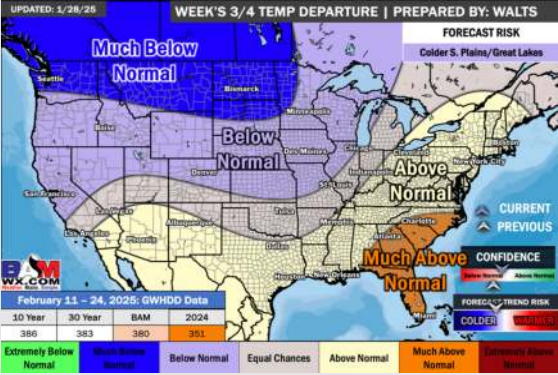
Next 7 Day Temperature Departure



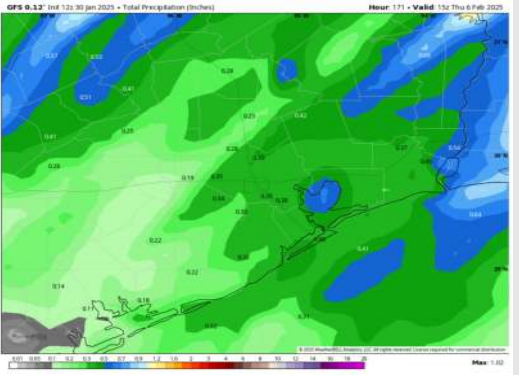
8-14 Day Temperature Departure



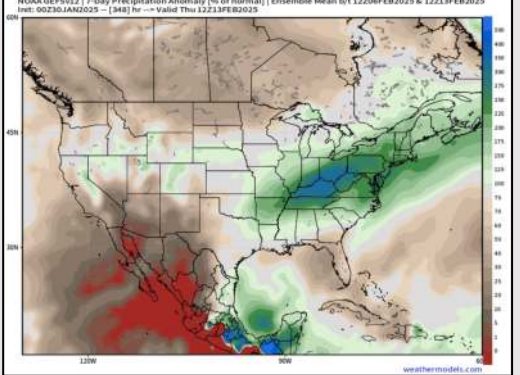
15-30 Day Temperature Departure



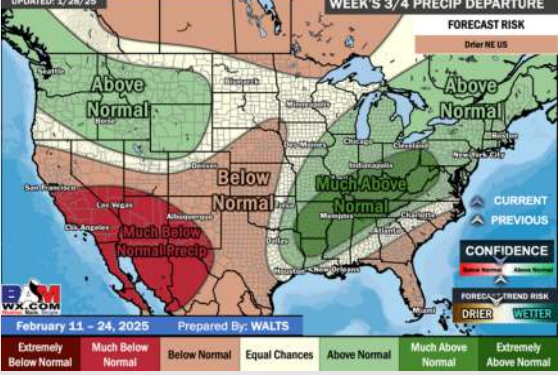
Next 7 Day Total Precipitation



8-14 Day % of Average Precip.



15-30 Day % of Average Precip.



- Temps are expected to be above normal for the week ahead. Favoring scattered rain showers throughout the week, with drier conditions by the weekend/start of next week.
- Above normal temp and slightly below normal rainfall are expected for week 2.
- Above normal temperatures and near normal precipitation chances are expected for the weeks 3/4 timeframe.