

# Houston Pilots Forecast Package



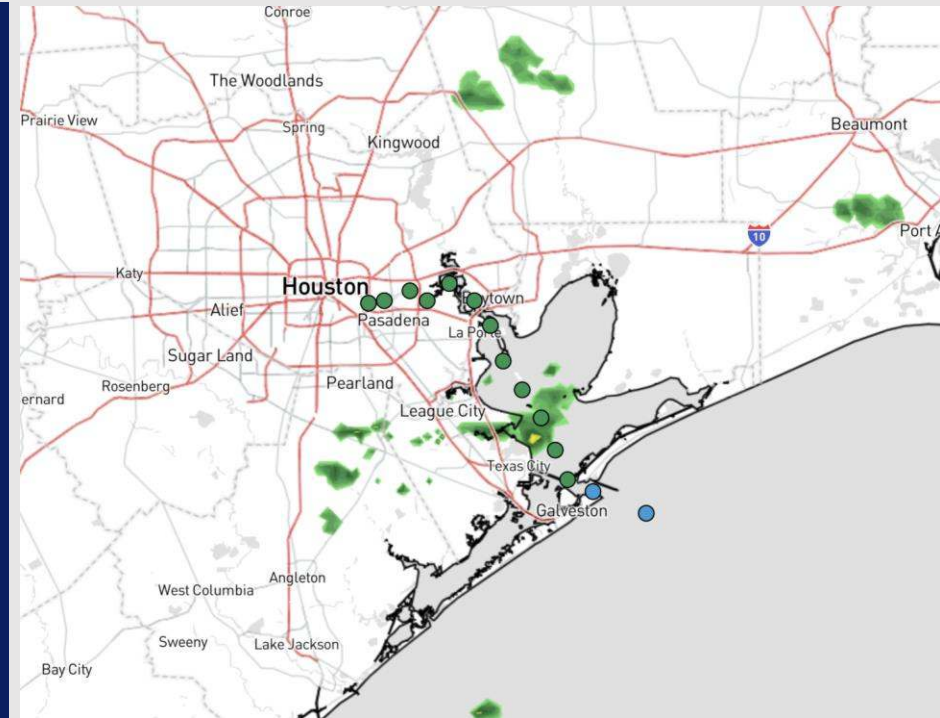
Updated: 1:30 PM CT

Saturday, January 4, 2025

Forecaster: Alyssa Elliott

## Weather Headlines

- **Elevated winds will bring the risk of wave heights of 6'+ come Sunday AM. Check the wave height slide for more info! VIDEO update as of 1 PM CT SAT.**
- **Keeping an eye on a patchy dense fog risk S of Morgan's Point tonight and into early SUN AM.**
- **Sunday will bring the risk of strong/severe thunderstorms for all stations.**



**Current Radar: 1:00 PM CT**

As always, please do not hesitate to reach out to us with any forecast questions at **(317)-560-8122**. Press **1** for forecast questions.

You can also access real-time forecast updates and 24/7 meteorological chat assistance on your **Clarity** app. Click [here](#) for login assistance.



# Houston Pilots Port Trigger Update



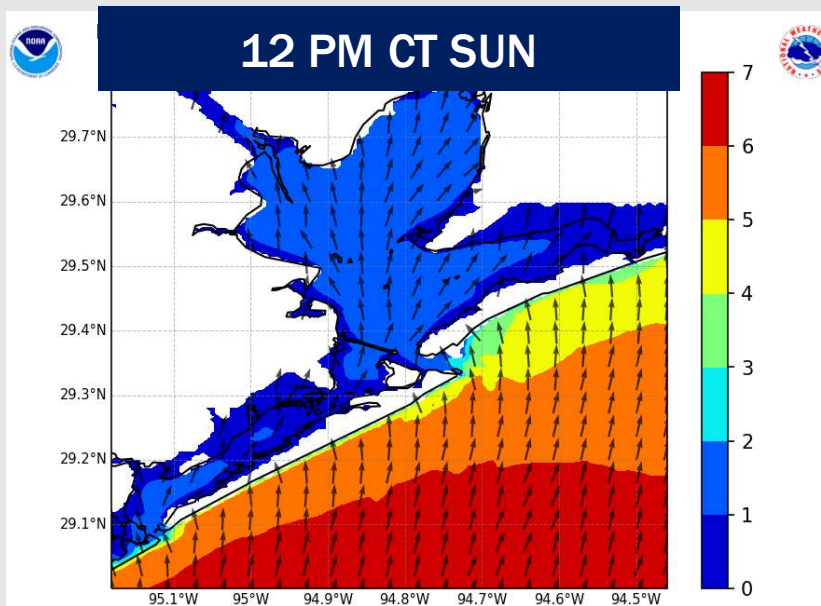
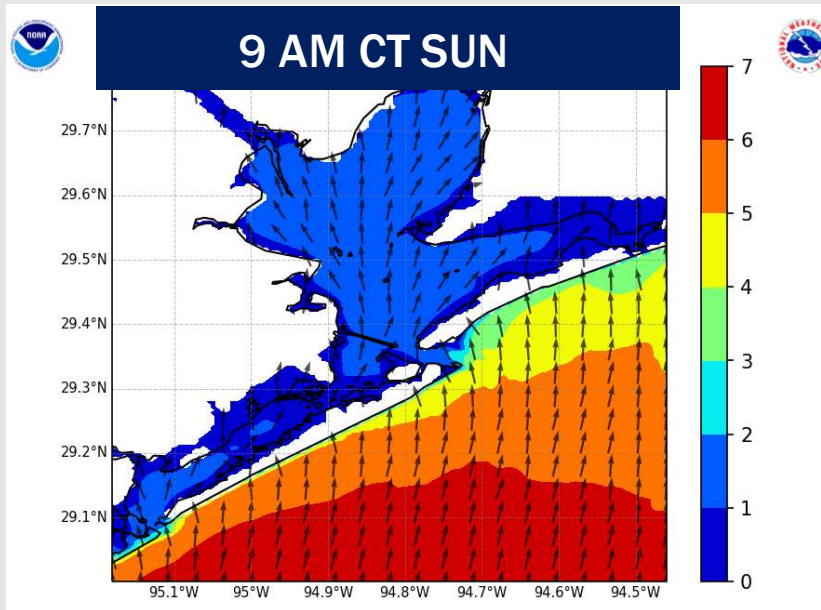
Port Condition	34 KTS+ Sustained Wind Trigger Reached at:	6 Foot Wave Trigger Reached at:	Time Remaining/Trigger Ends At:
Victor	---	---	---
Whiskey	---	---	---
X-Ray	---	---	---
Yankee	---	<b>CURRENT</b>	<b>SAT 6 PM</b>
Zulu	---	<b>SAT 6 PM</b>	<b>SUN 6 PM</b>

Port Condition	Trigger Definition	Trigger Reached?
Victor	Hurricane entering/developing in Gulf of Mexico that's a threat to the area	<b>NO</b>
Whiskey	72 hours prior to predicted sustained winds of 34+ KTS	<b>NO</b>
X-Ray	48 hours prior to predicted sustained winds of 34+ KTS or <b>6' wave height</b>	<b>PAST</b>
Yankee	24 hours prior to predicted sustained winds of 34+ KTS or <b>6' wave height</b>	<b>YES</b>
Zulu	12 hours prior to predicted sustained winds of 34+ KTS or <b>6' wave height</b>	<b>NO</b>

**NOTES:** The potential for wave heights at the Boarding Station to reach 6+ ft will be possible beginning at 6 AM Sunday lasting through 6 PM Sunday.

*Sustained winds are NOT favored to reach to 34 kts through the weekend.*

# Wave Height Forecast Update



Elevated, sustained winds out of the S/SE will cause elevated wave heights SUN. The threat is favored to remain for only the Boarding Station.

Expecting wave heights to begin to quickly increase after 3 AM SUN reaching 5 – 6 ft by 6 AM.

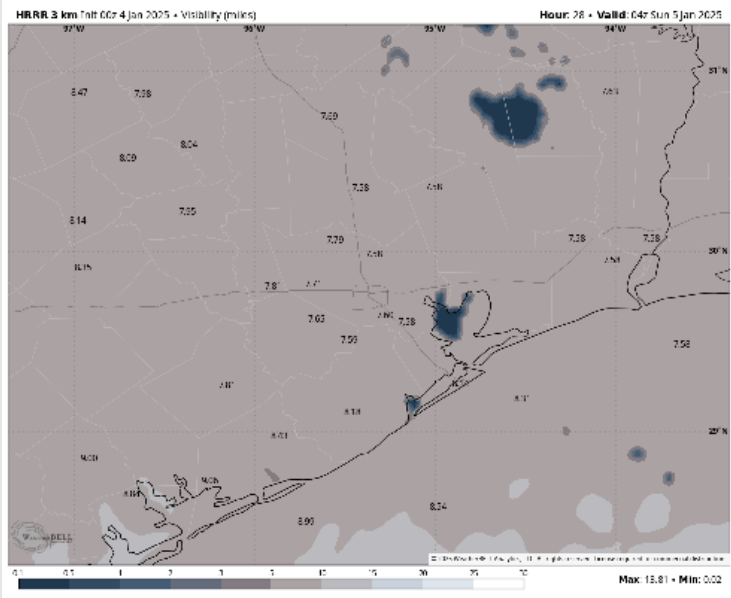
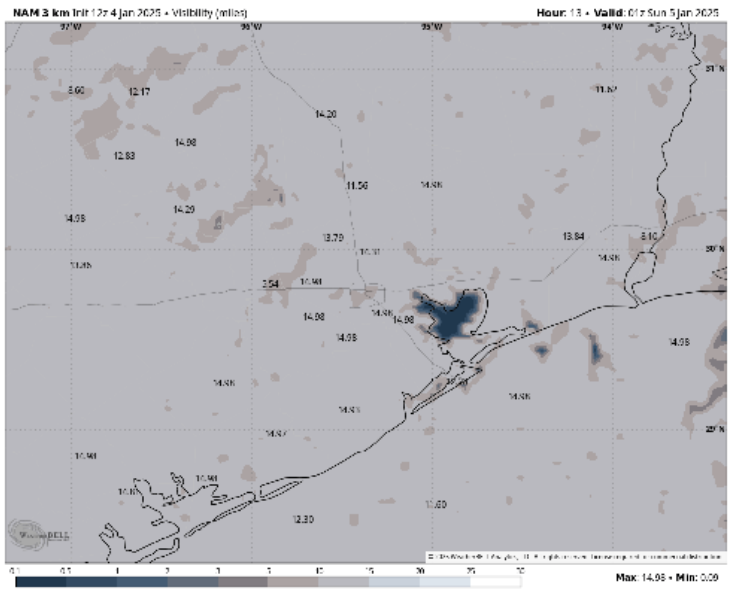
Favoring peak wave heights to be between 9 AM – 3 PM with wave heights of 6 – 7 ft.

After 3 PM wave heights will slowly decrease, dipping below 6 ft by 6 PM SUN and 4 ft or less by 9 AM MON.

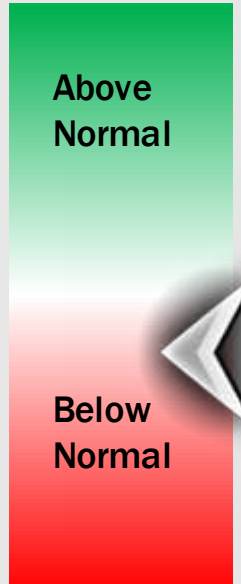
# Houston Pilots Visibility Report



## 7 PM CST SAT VISIBILITY      12 AM CST SUN VISIBILITY



## Confidence



TIMEFRAME DISCUSSED	THREAT
6 PM SAT to 2 AM SUN	Low

- Watching for a patchy fog / hazy sky risk for stations S of Morgan's Point beginning as early as 6 PM Saturday as winds shift to be out of the SE. Stations N of Morgan's Point not expected to have impacts.
- Hazy conditions may reduce visibility to 1 – 2 miles for stations S of Morgan's Point. Anticipating the greatest risk for isolated instances of patchy dense fog with visibility at 0.5 mile or less to be between Morgan's Point and station 37/38.
- Favoring this fog /haze threat clears out of the area by 2 AM Sunday as winds become more southerly.

# Houston Pilots Extended Range Visibility Report



## Tuesday 1/7/24

No fog concerns for Tuesday.

### Forecast Confidence



## Thursday 1/9/25

No fog concerns for Thursday.

### Forecast Confidence



## Wednesday 1/8/25

No fog concerns for Wednesday.

### Forecast Confidence



## Chance for Fog

Tuesday AM	Unlikely
Tuesday PM	Unlikely
Wednesday AM	Unlikely
Wednesday PM	Unlikely
Thursday AM	Unlikely
Thursday PM	Unlikely

# Houston Pilots Visibility Chart (miles)



## Forecast Confidence



Visibility	Sat 2 pm	Sat 3 pm	Sat 4 pm	Sat 5 pm	Sat 6 pm	Sat 7 pm	Sat 8 pm	Sat 9 pm	Sat 10 pm	Sat 11 pm	Sun 12 am	Sun 1 am	Sun 2 am	Sun 3 am	Sun 4 am	Sun 5 am	Sun 6 am	Sun 7 am	Sun 8 am	Sun 9 am	Sun 10 am	Sun 11 am	Sun 12 pm	Sun 1 pm
Houston Pilots N - 610 Bridge	10	10	10	10	10	10	10	10	10	10	10	10	10	10	10	10	10	10	10	10	9	10	10	10
Houston Pilots M - Kinder 1	10	10	10	10	10	10	10	10	10	10	10	10	10	10	10	10	10	10	10	9	9	10	10	10
Houston Pilots L - Greens Bayou	10	10	10	10	10	10	10	10	10	10	10	10	10	10	10	10	10	10	10	9	9	10	10	10
Houston Pilots K - Shell Crude	10	10	10	10	10	10	10	10	10	10	10	10	10	10	10	10	10	10	10	9	8	10	10	10
Houston Pilots J - Lynchburg Ferries	10	10	10	10	10	10	10	10	10	10	10	10	10	10	10	10	10	10	10	9	8	10	10	10
Houston Pilots I - Exxon 3	10	10	10	10	10	10	10	10	10	10	10	10	10	10	10	10	10	10	10	9	8	10	10	10
Houston Pilots H - Morgans Point	10	10	10	10	10	10	10	10	10	10	10	10	10	10	10	10	10	10	10	9	8	9	10	10
Houston Pilots G - 75/76	10	10	10	10	10	10	10	10	10	10	10	10	10	10	10	10	10	10	10	7.9	8	9	9	9
Houston Pilots F - 63/64	10	10	10	10	10	10	10	10	10	10	10	10	10	10	10	10	10	10	10	7.9	8	9	9	9
Houston Pilots E - 51/52	10	10	10	10	10	10	10	10	10	10	10	10	10	10	10	10	10	10	10	7.9	8	9	9	8
Houston Pilots D - 37/38	10	10	10	10	10	10	10	10	10	10	10	10	10	10	10	10	10	10	10	7.9	8	9	9	8
Houston Pilots C - 25/26	10	10	10	10	10	10	10	10	10	10	10	10	10	10	10	10	10	10	10	7.9	8	9	9	8
Houston Pilots B - 11/12	10	10	10	10	10	10	10	10	10	10	10	10	10	10	10	10	10	10	10	6.9	8	9	9	8
Houston Pilots A - 1 & 2 Bravo	10	10	10	10	10	10	10	10	10	10	10	10	9	10	10	10	10	10	10	6.9	6.9	7.9	7.9	9

**NOTE: This is automated data that may/may not agree with the official BAM thinking that's found on the daily slides or special visibility report slides. This data should be used as a guide only**

# Houston Pilots Wind Chart



## Forecast Confidence



Sustained wind 10 Knots  
Gusts 15 Knots  
Wind from the SE

## Example



Wind	Sat 2 pm	Sat 3 pm	Sat 4 pm	Sat 5 pm	Sat 6 pm	Sat 7 pm	Sat 8 pm	Sat 9 pm	Sat 10 pm	Sat 11 pm	Sun 12 am	Sun 1 am	Sun 2 am	Sun 3 am	Sun 4 am	Sun 5 am	Sun 6 am	Sun 7 am	Sun 8 am	Sun 9 am	Sun 10 am	Sun 11 am	Sun 12 pm	Sun 1 pm
Houston Pilots N - 610 Bridge	9 21 ↙	9 20 ↙	9 20 ↙	9 20 ↙	8 17 ↙	8 16 ↙	8 17 ↙	8 17 ↙	8 17 ↙	8 18 ↙	9 20 ↑	10 21 ↑	10 23 ↑	12 24 ↑	12 24 ↑	13 25 ↑	13 26 ↑	13 26 ↑	14 26 ↑	14 28 ↑	15 29 ↑	15 30 ↑	16 32 ↑	16 32 ↑
Houston Pilots M - Kinder 1	10 21 ↙	9 20 ↙	9 20 ↙	9 20 ↙	8 17 ↙	8 16 ↙	8 17 ↙	8 17 ↙	8 17 ↙	8 18 ↙	9 20 ↑	10 21 ↑	10 23 ↑	12 24 ↑	12 24 ↑	13 25 ↑	13 26 ↑	13 26 ↑	14 26 ↑	14 28 ↑	15 29 ↑	15 30 ↑	16 32 ↑	16 32 ↑
Houston Pilots L - Greens Bayou	10 21 ↙	10 20 ↙	9 20 ↙	9 18 ↙	8 17 ↙	8 16 ↙	8 17 ↙	8 17 ↙	8 17 ↙	8 18 ↙	9 20 ↑	9 21 ↑	10 22 ↑	10 23 ↑	12 24 ↑	13 25 ↑	13 26 ↑	13 26 ↑	14 26 ↑	14 26 ↑	14 28 ↑	15 29 ↑	16 31 ↑	16 31 ↑
Houston Pilots K - Shell Crude	10 21 ↙	10 20 ↙	10 18 ↙	9 18 ↙	9 17 ↙	8 16 ↙	8 16 ↙	8 17 ↙	8 17 ↙	8 18 ↙	9 20 ↑	9 21 ↑	10 22 ↑	10 23 ↑	12 24 ↑	13 25 ↑	13 26 ↑	13 26 ↑	14 26 ↑	14 26 ↑	14 28 ↑	15 29 ↑	16 31 ↑	16 31 ↑
Houston Pilots J - Lynchburg Ferries	10 21 ↙	10 20 ↙	10 18 ↙	9 18 ↙	9 17 ↙	8 16 ↙	8 16 ↙	8 17 ↙	8 17 ↙	8 17 ↙	8 18 ↙	9 20 ↑	10 22 ↑	10 23 ↑	10 24 ↑	12 25 ↑	12 25 ↑	13 25 ↑	13 26 ↑	13 26 ↑	14 28 ↑	14 29 ↑	16 30 ↑	16 30 ↑
Houston Pilots I - Exxon 3	12 21 ↙	12 21 ↙	12 20 ↙	12 20 ↙	12 18 ↙	10 17 ↙	10 17 ↙	10 17 ↙	12 17 ↙	13 18 ↙	13 20 ↑	14 21 ↑	15 23 ↑	16 24 ↑	17 24 ↑	17 25 ↑	17 26 ↑	17 26 ↑	17 26 ↑	17 26 ↑	17 26 ↑	16 28 ↑	17 29 ↑	17 29 ↑
Houston Pilots H - Morgans Point	12 21 ↙	12 20 ↙	12 20 ↙	12 20 ↙	10 17 ↙	10 17 ↙	10 17 ↙	10 17 ↙	10 17 ↙	12 18 ↙	13 20 ↑	14 21 ↑	15 23 ↑	15 24 ↑	16 24 ↑	16 25 ↑	16 25 ↑	17 25 ↑	17 26 ↑	17 26 ↑	17 26 ↑	16 28 ↑	17 29 ↑	17 29 ↑
Houston Pilots G - 75/76	13 22 ↙	12 21 ↙	12 20 ↙	12 20 ↙	12 18 ↙	12 17 ↙	12 17 ↙	12 17 ↙	13 17 ↙	13 20 ↑	15 22 ↑	15 23 ↑	17 24 ↑	17 26 ↑	18 26 ↑	18 28 ↑	20 29 ↑	20 29 ↑	20 29 ↑	20 29 ↑	20 28 ↑	20 29 ↑	18 30 ↑	17 29 ↑
Houston Pilots F - 63/64	13 21 ↙	12 21 ↙	12 20 ↙	12 18 ↙	12 17 ↙	10 16 ↙	10 17 ↙	12 17 ↙	12 17 ↙	13 20 ↑	15 22 ↑	15 23 ↑	17 24 ↑	17 26 ↑	18 26 ↑	18 28 ↑	20 29 ↑	20 29 ↑	20 29 ↑	20 29 ↑	20 29 ↑	18 29 ↑	18 30 ↑	18 29 ↑
Houston Pilots E - 51/52	13 21 ↙	12 20 ↙	12 18 ↙	10 17 ↙	10 16 ↙	10 15 ↙	10 16 ↙	10 17 ↙	12 17 ↙	13 20 ↑	14 22 ↑	15 23 ↑	17 24 ↑	17 26 ↑	18 26 ↑	20 29 ↑	20 29 ↑	20 29 ↑	20 30 ↑	20 29 ↑	20 29 ↑	18 29 ↑	18 29 ↑	18 29 ↑
Houston Pilots D - 37/38	13 21 ↙	12 20 ↙	10 17 ↙	10 17 ↙	10 15 ↙	10 15 ↙	10 16 ↙	10 17 ↙	12 17 ↙	13 20 ↑	14 22 ↑	15 24 ↑	16 24 ↑	17 26 ↑	18 26 ↑	20 29 ↑	20 29 ↑	20 29 ↑	20 30 ↑	20 29 ↑	20 29 ↑	18 29 ↑	18 29 ↑	18 29 ↑
Houston Pilots C - 25/26	13 21 ↙	12 18 ↙	10 17 ↙	10 16 ↙	10 15 ↙	9 14 ↙	10 16 ↙	10 17 ↙	10 17 ↙	13 20 ↑	14 22 ↑	15 24 ↑	16 25 ↑	17 26 ↑	17 28 ↑	18 29 ↑	20 30 ↑	20 29 ↑	20 29 ↑	20 29 ↑	20 29 ↑	18 29 ↑	18 29 ↑	18 29 ↑
Houston Pilots B - 11/12	12 20 ↙	10 17 ↙	10 16 ↙	9 15 ↙	9 15 ↙	8 14 ↙	9 15 ↙	9 16 ↙	10 17 ↙	12 20 ↑	13 22 ↑	14 23 ↑	15 24 ↑	16 26 ↑	16 26 ↑	17 28 ↑	17 29 ↑	17 29 ↑	17 29 ↑	17 29 ↑	17 29 ↑	17 28 ↑	17 28 ↑	17 28 ↑
Houston Pilots A - 1 & 2 Bravo	13 21 ↙	12 18 ↙	10 16 ↙	10 16 ↙	10 15 ↙	10 15 ↙	10 16 ↙	12 17 ↙	13 18 ↙	14 21 ↑	15 23 ↑	16 24 ↑	17 26 ↑	18 28 ↑	20 29 ↑	20 30 ↑	20 30 ↑	20 30 ↑	20 31 ↑	20 31 ↑	20 30 ↑	20 31 ↑	20 30 ↑	18 30 ↑

**NOTE: This is automated data that may/may not agree with the official BAM thinking that's found on the daily slides. This data should be used as a guide only.**

# Houston Pilots: SAT. 1/4/2025



## Forecast Discussion

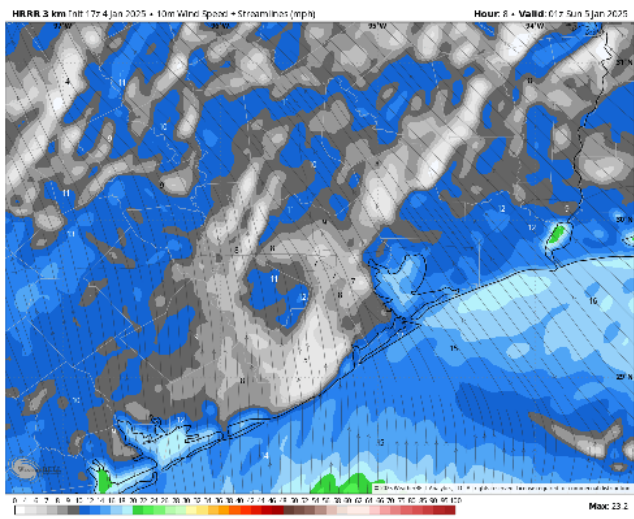
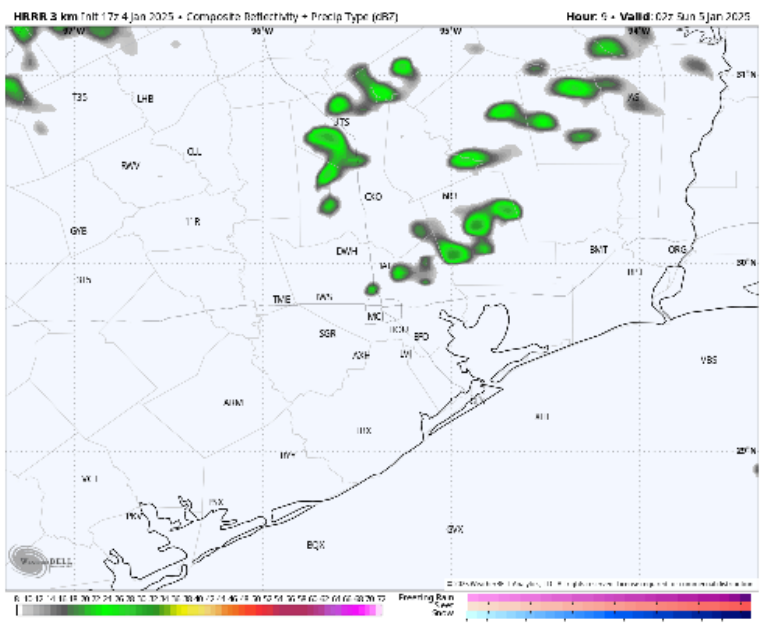
**Precip:** Isolated (20%) rain showers are possible through 6 PM before conditions dry out for the rest of the day.

**Wind:** Winds will be out of the SE through the PM. **N of Morgan's Point:** Winds will be 3 – 8 kts throughout the rest of the day. **S of Morgan's Point:** Winds will be 7 – 12 kts for the rest of the day.

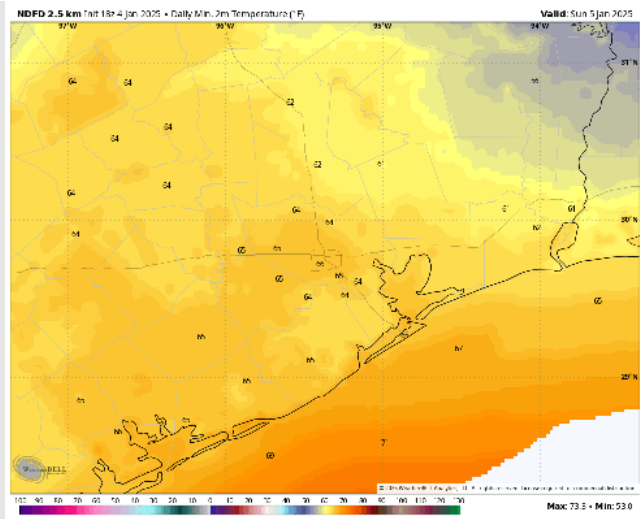
**Low Temps:** **N of Morgan's Point:** Mid 60 F. **S of Morgan's Point:** Mid to upper 60's F.

**Visibility:** Watching for a very localized fog risks for all stations S of Morgan's Point this PM. See visibility slide.

### Precip Image: 8 PM CT



Wind Speed:  
7 PM CT



Low Temps  
SUN AM



# Houston Pilots: SUN. 1/5/2025



## Forecast Discussion

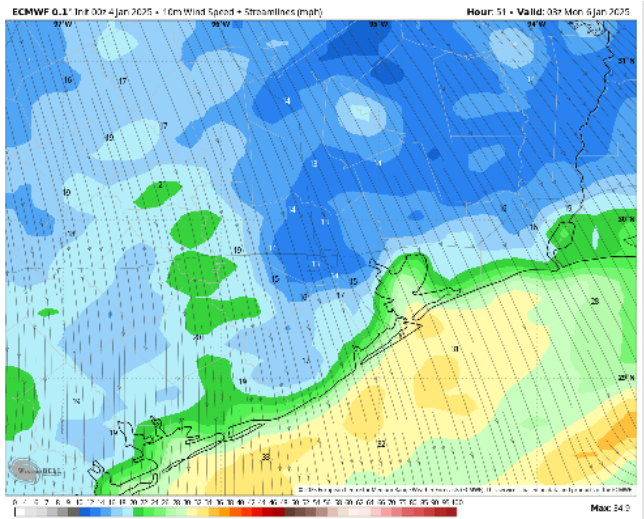
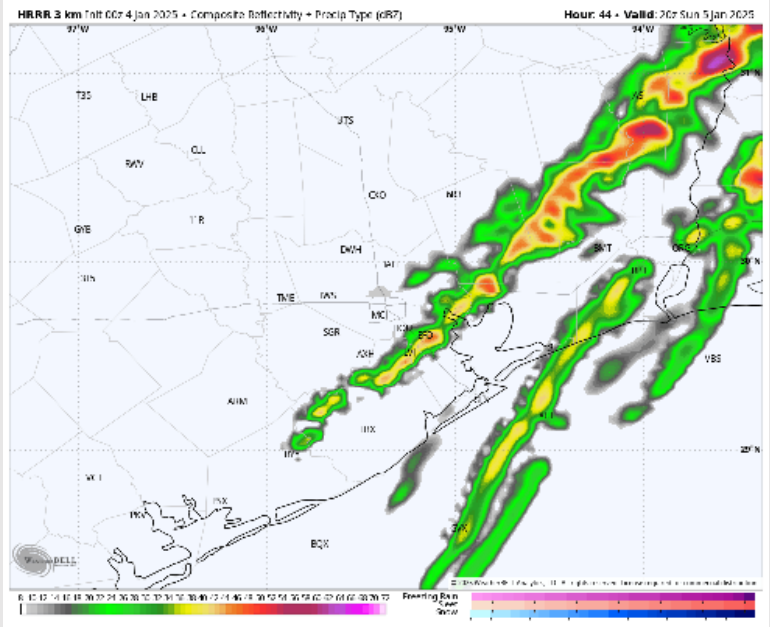
**Precip:** Beginning at 6 AM, light showers will be possible through 12 PM before a line of strong/severe storms work in through 5 PM before rain chances exit for the day. **Risks will be for wind gusts of 45-55 kts, small hail, and an isolated tornado risk.**

**Wind:** Winds will be out of the S/SE through 6 PM before shifting to be out of the N/NW for the rest of the day. **N of Morgan's Point:** Winds will be at 8 – 13 kts throughout the day. **S of Morgan's Point:** Winds will be at 15 – 20 kts through 6 PM before winds increase to 25 – 30 kts for the rest of the day. **Non-thunderstorm wind gusts of 20 – 25 kts possible for stations N of Morgan's Point throughout Sunday.** After 6 PM wind gusts of 30-35 kts will be possible for stations S of Morgan's Point.

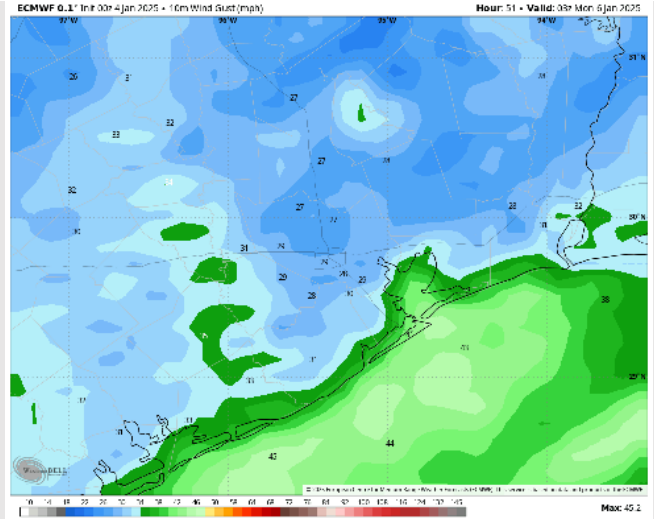
**High Temps:** N of Morgan's Point: Mid-70s F. S of Morgan's Point: Low 70s F.

**Visibility:** No fog concerns on Sunday, however, <1.0 mile visibility will be possible as thunderstorms work through.

## Precip Image: 2 PM CT



Wind Speed  
9 PM CT



Max Wind  
Gusts Sunday

# Houston Pilots: MON. 1/6/2025

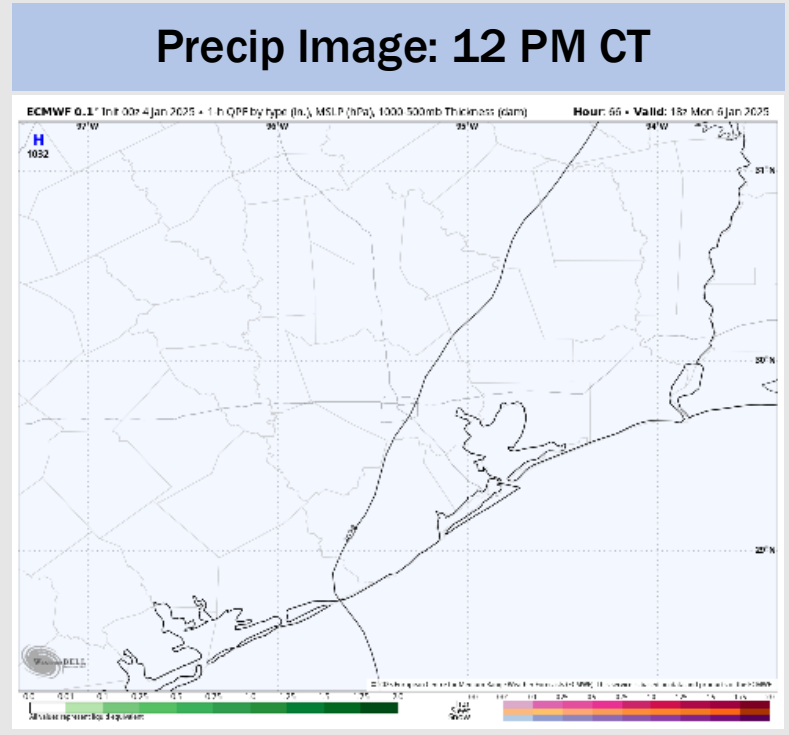
## Forecast Discussion

**Precip:** Favoring dry conditions for all stations on Monday.

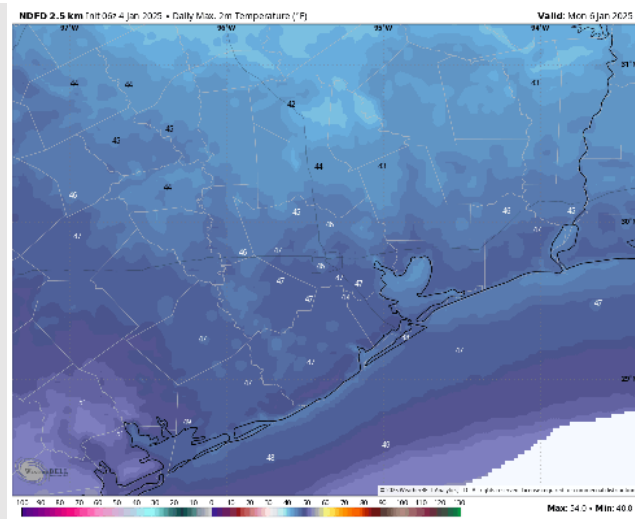
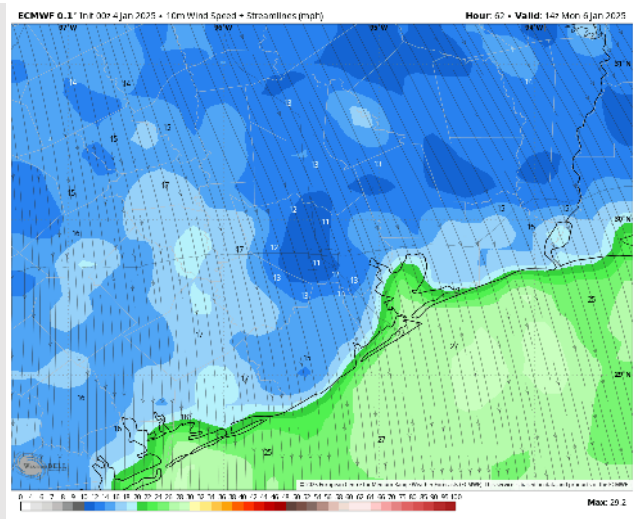
**Wind:** Winds will generally be out of the N/NW throughout Monday. **N of Morgan's Point:** Winds will be at 9 – 14 kts throughout the day Monday. **S of Morgan's Point:** Winds will be at 17 – 22 kts through 12 PM before decreasing to 15 – 20 kts for the rest of the day Monday.

**High Temps:** **N of Morgan's Point:** Mid 40s F. **S of Morgan's Point:** Mid 40s F

**Visibility:** Not anticipating any visibility concerns for Monday.



Wind Speed:  
7 PM CT

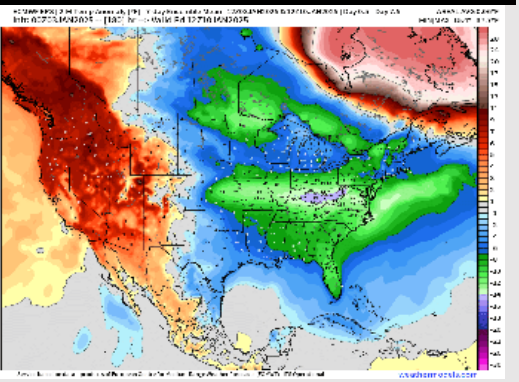


High Temps  
Monday

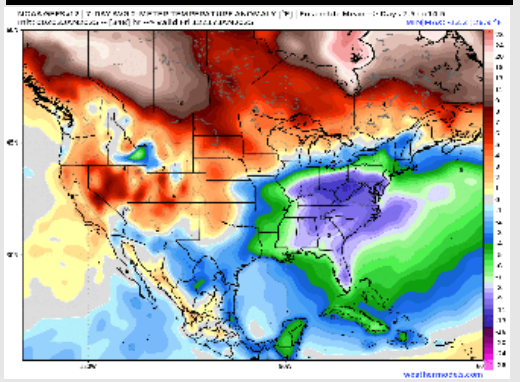
# Houston Pilots: 1/4/2025



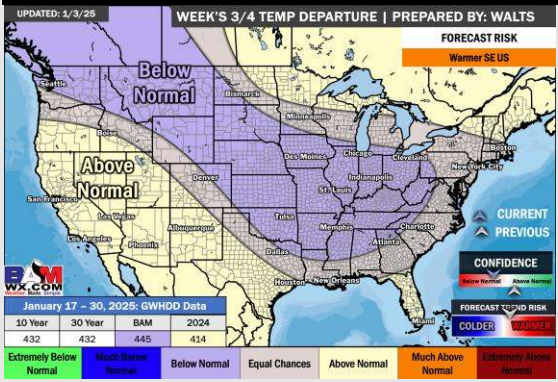
**Next 7 Day Temperature Departure**



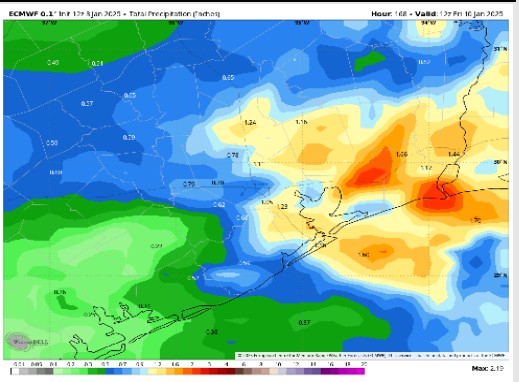
**8-14 Day Temperature Departure**



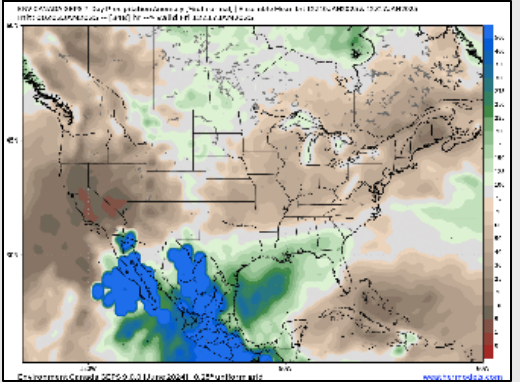
**15-30 Day Temperature Departure**



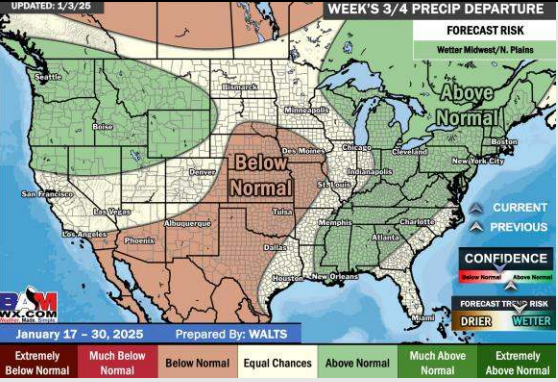
**Next 7 Day Total Precipitation**



**8-14 Day % of Average Precip.**



**15-30 Day % of Average Precip.**



- Temps are expected to be below normal for the week 1 timeframe. Rain favored over the weekend and then drier conditions in play for the start of next week.
- Below normal temperatures and above normal rainfall are expected for week 2.
- Above normal temperatures and near normal precipitation chances are expected for the weeks 3/4 timeframe.