

Houston Pilots Forecast Package



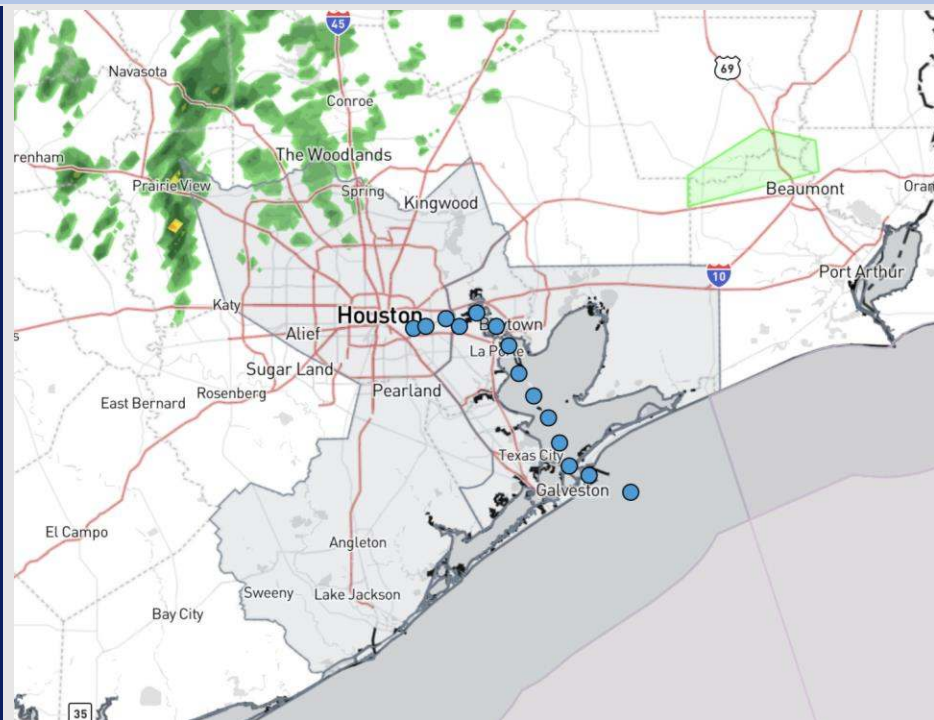
Updated: 5:45 AM CT

Thursday, January 30, 2025

Forecaster: Alyssa Elliott

Weather Headlines

- **Dense sea fog continues to be the main risk for stations S of Morgan's Point this AM. Showers and storms later today will help to improve visibility.**
- **We are currently in Zulu Port conditions as max wave heights are anticipated to reach 6 ft by 2PM THU. See wave height slide for more information!**
- **Strong to Locally Severe Storms will be possible Thursday afternoon!**



Current Radar: 5:30 AM CT

As always, please do not hesitate to reach out to us with any forecast questions at **(317)-560-8122**. Press 1 for forecast questions.

You can also access real-time forecast updates and 24/7 meteorological chat assistance on your [Clarity](#) app. Click [here](#) for login assistance.



Houston Pilots Port Trigger Update



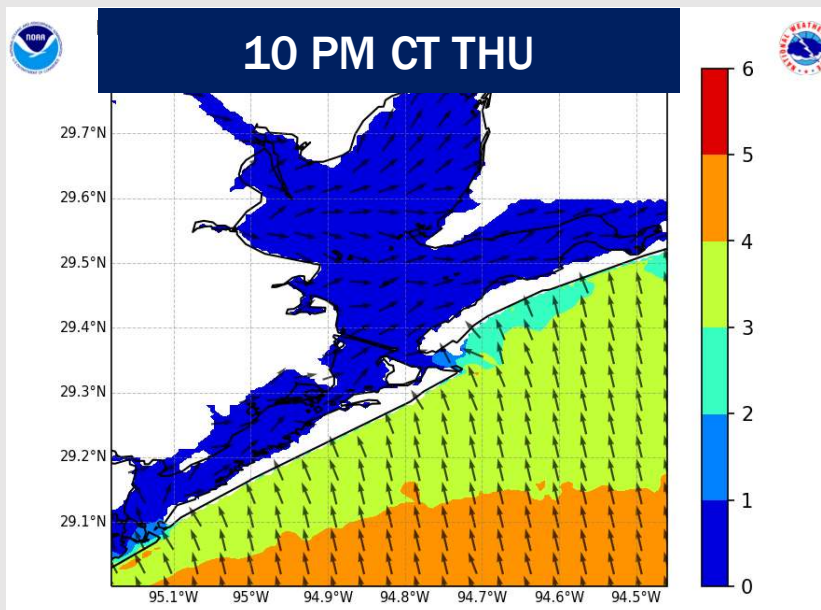
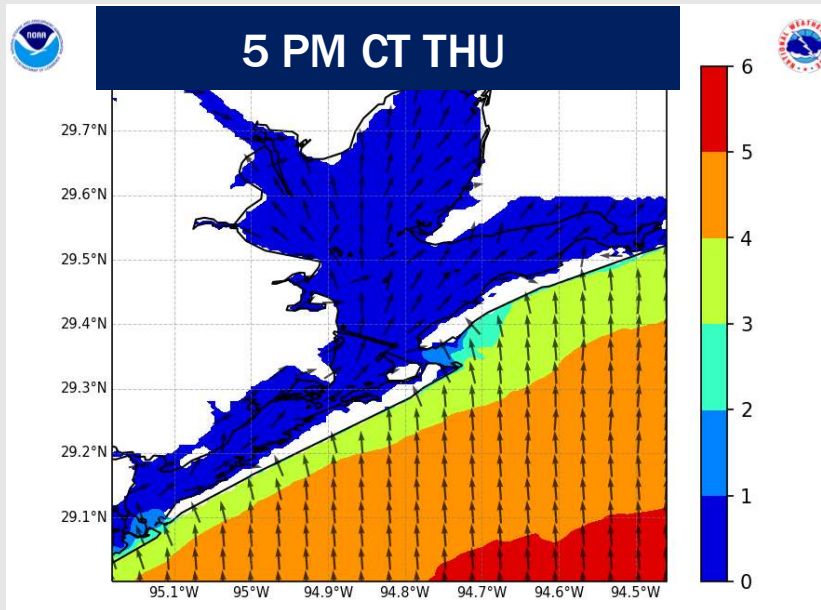
Port Condition	34 KTS+ Sustained Wind Trigger Reached at:	6 Foot Wave Trigger Reached at:	Time Remaining/Trigger Ends At:
Victor	---	---	---
Whiskey	---	---	---
X-Ray	---	---	PAST
Yankee	---	---	PAST
Zulu	---	CURRENT	6 AM FRI

Port Condition	Trigger Definition	Trigger Reached?
Victor	Hurricane entering/developing in Gulf of Mexico that's a threat to the area	N/A
Whiskey	72 hours prior to predicted sustained winds of 34+ KTS	N/A
X-Ray	48 hours prior to predicted sustained winds of 34+ KTS or 6' wave height	PAST
Yankee	24 hours prior to predicted sustained winds of 34+ KTS or 6' wave height	PAST
Zulu	12 hours prior to predicted sustained winds of 34+ KTS or 6' wave height	YES

NOTES:

With increased winds ahead of a front on Thursday, maximum waves are anticipated to reach 6' by 2PM THU for the Boarding Station ONLY. See wave height slide for more information!

Wave Height Forecast Update



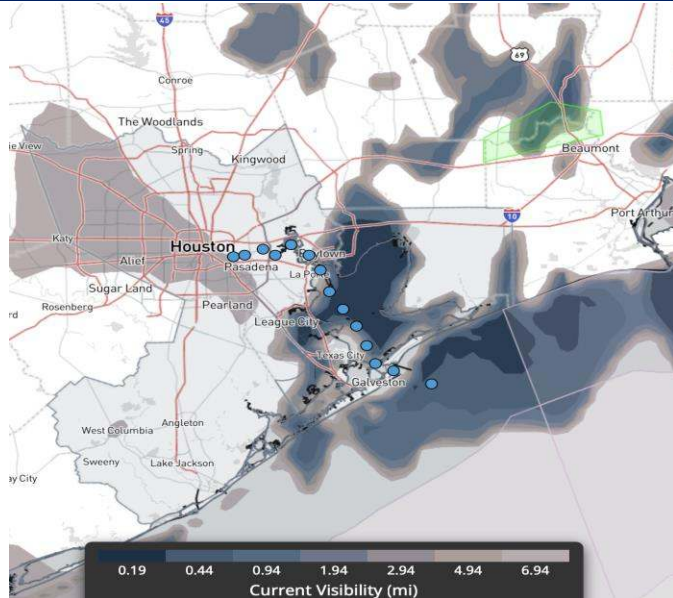
Wave heights at the Boarding Station are expected to increase THU AM, reaching 6' by 2PM THU.

Modeled wave height images may be slightly underdone, so we are not completely ruling out a few 6' waves at the Boarding Station.

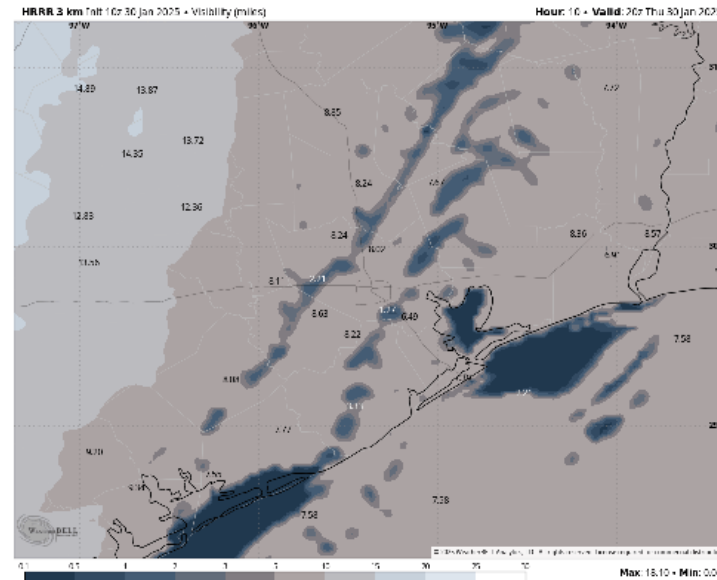
By 6AM FRI, we are favoring wave heights to be at or below 4ft.

Houston Pilots Visibility Report

CURRENT VISIBILITY (5:15AM)



2 PM CST THU VISIBILITY



Confidence

Above
Normal

Below
Normal

TIMEFRAME DISCUSSED

THREAT

CURRENT – 6PM THU

Medium

- This AM, fog is beginning to become more patchy and hazy in nature for stations N of Morgan's Point, with visibility at 1-2 miles possible through ~8AM. Beyond this, light rain and drizzle will work in, helping to prevent fog from reforming in these areas.
- For stations S of Morgan's Point, pockets of patchy dense fog (<0.5 miles) will continue through at least 12PM. Scattered showers and storms will push SE through the PM, gradually breaking up dense fog in the Bay. Hazy conditions may remain in the Bay (1-2 miles) and isolated pockets of sea fog may linger in the Gulf causing brief periods of reduced visibility (0.5-1 mile) for the Boarding Station.
- By 6 PM, once the front passes and winds shift out of the NW, the risk for fog will quickly end, clearing hazy conditions completely in the Bay and clearing foggy conditions at the Boarding Station.

Houston Pilots Visibility Report



TIMEFRAME
DISCUSSED

THREAT

9 PM THU – 3 AM FRI

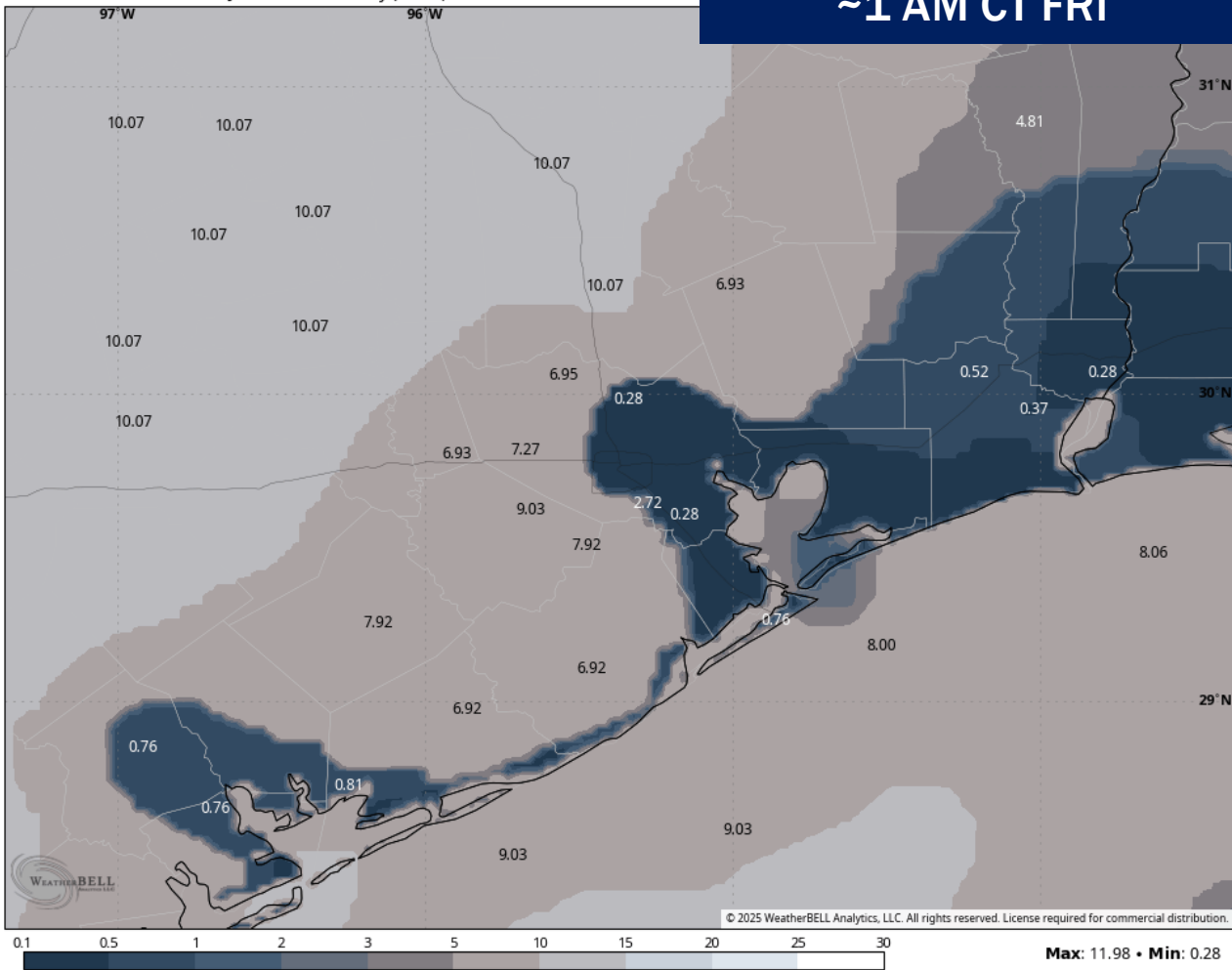
Low

Forecast Confidence

Above
Normal

Below
Normal

NBM 2.5 km Init 06z 30 Jan 2025 • Visibility (miles)



Watching for a low-end risk of reduced visibility to 1 – 3 miles for Thursday evening into Friday morning due to non-sea fog for stations N of Morgan’s Point.

Patchy, dense fog will keep reduced visibilities of <0.5 a risk as well, although this should not be a widespread concern.

Confidence in slightly below normal on the timing due to winds / how quickly the entire front can exit the area and when cloud cover starts to clear.

Houston Pilots Extended Range Visibility Report



Sunday 2/2/25

Monitoring an isolated, patchy sea fog risk for all stations Sunday AM. Confidence is well below normal.

Forecast Confidence



Tuesday 2/4/25

Not favoring any fog risks for Tuesday currently.

Forecast Confidence



Monday 2/3/25

Monitoring a patchy sea fog risk for Stations S of Morgan's Point for Monday AM.

Forecast Confidence



Chance for Fog

Sunday AM	Low-End
Sunday PM	Unlikely
Monday AM	Low-End
Monday PM	Unlikely
Tuesday AM	Unlikely
Tuesday PM	Unlikely

Houston Pilots Visibility Chart (miles)



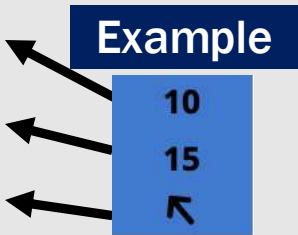
Visibility	Thu 7 am	Thu 8 am	Thu 9 am	Thu 10 am	Thu 11 am	Thu 12 pm	Thu 1 pm	Thu 2 pm	Thu 3 pm	Thu 4 pm	Thu 5 pm	Thu 6 pm	Thu 7 pm	Thu 8 pm	Thu 9 pm	Thu 10 pm	Thu 11 pm	Fri 12 am	Fri 1 am	Fri 2 am	Fri 3 am	Fri 4 am	Fri 5 am	Fri 6 am
Houston Pilots N - 610 Bridge	2.5	2	1.1	2.9	3.9	3.9	3.9	3.9	2.9	2.9	3.9	3.9	4.9	5.9	5.9	6.9	6.9	6.9	5.9	6.9	6.9	8	10	10
Houston Pilots M - Kinder 1	2.5	2	1.1	2.9	3.9	3.9	3.9	3.9	2.9	2.9	3.9	3.9	4.9	5.9	5.9	6.9	6.9	6.9	5.9	6.9	6.9	6.9	10	10
Houston Pilots L - Greens Bayou	2.5	1.6	0.5	2.9	3.9	3.9	3.9	3.9	2.9	2.9	3.9	3.9	4.9	5.9	5.9	6.9	6.9	6.9	5.9	5.9	6.9	6.9	10	10
Houston Pilots K - Shell Crude	2.5	2	1.1	2.9	3.9	3.9	3.9	3.9	2.9	2.9	3.9	3.9	4.9	5.9	5.9	6.9	6.9	5.9	5.9	5.9	6.9	6.9	9	10
Houston Pilots J - Lynchburg Ferries	1.1	1.1	0.3	2.9	3.9	3.9	3.9	3.9	2.9	2.9	3.9	3.9	4.9	5.9	5.9	6.9	6.9	5.9	5.9	5.9	6.9	6.9	9	10
Houston Pilots I - Exxon 3	2.5	1.6	1.1	2.9	3.9	3.9	2.9	3.9	2.9	2.9	3.9	3.9	4.9	5.9	5.9	6.9	5.9	5.9	5.9	5.9	5.9	6.9	9	10
Houston Pilots H - Morgans Point	2.9	2	0.3	2.9	3.9	3.9	2.9	2.9	2.9	2.9	3.9	3.9	4.9	5.9	5.9	6.9	5.9	5.9	5.9	5.9	5.9	6.9	8	10
Houston Pilots G - 75/76	0.8	0.5	0.3	2.9	3.9	2.9	0.5	2.9	0.5	2.5	1.1	3.9	3.9	4.9	4.9	4.9	4.9	4.9	3.9	3.9	3.9	3.9	9	9
Houston Pilots F - 63/64	0.8	0.5	0.3	2.9	3.9	2.9	0.5	1.1	0.5	0.8	0.5	3.9	3.9	4.9	4.9	4.9	4.9	4.9	3.9	2.9	2.5	2.9	9	10
Houston Pilots E - 51/52	0.8	0.5	1.6	3.9	4.9	3.9	2.9	1.1	0.5	0.5	0.5	1.1	2.5	2	1.1	0.5	0.5	0.3	0.3	0.3	0.2	0.2	9	10
Houston Pilots D - 37/38	0.8	0.5	1.6	3.9	4.9	3.9	2	1.6	0.8	0.5	0.5	1.1	2.5	2	1.1	0.5	0.5	0.3	0.3	0.3	0.2	0.2	9	10
Houston Pilots C - 25/26	0.8	0.5	1.6	2.9	3.9	3.9	2	2.9	1.1	0.5	0.5	2.9	2.5	2.9	3.9	3.9	1.1	0.8	0.5	0.5	0.5	0.7	9	10
Houston Pilots B - 11/12	0.8	0.5	2.5	2.9	3.9	3.9	2	1.6	1.1	0.5	0.5	0.8	1.1	0.5	0.5	0.5	0.5	0.5	0.5	0.5	0.2	0.2	8	10
Houston Pilots A - 1 & 2 Bravo	0.8	0.5	2.9	3.9	4.9	4.9	1.1	0.5	1.1	0.8	0.8	0.8	1.1	0.5	0.5	0.5	0.3	0.3	0.3	0.3	0.2	0.2	5	9

NOTE: This is automated data that may/may not agree with the official BAM thinking that's found on the daily slides or special visibility report slides. This data should be used as a guide only

Houston Pilots Wind Chart



Sustained wind 10 Knots
Gusts 15 Knots
Wind from the SE



Wind	Thu 7 am	Thu 8 am	Thu 9 am	Thu 10 am	Thu 11 am	Thu 12 pm	Thu 1 pm	Thu 2 pm	Thu 3 pm	Thu 4 pm	Thu 5 pm	Thu 6 pm	Thu 7 pm	Thu 8 pm	Thu 9 pm	Thu 10 pm	Thu 11 pm	Fri 12 am	Fri 1 am	Fri 2 am	Fri 3 am	Fri 4 am	Fri 5 am	Fri 6 am
Houston Pilots N - 610 Bridge	13 25 ↑	13 26 ↑	13 26 ↑	13 26 ↑	14 29 ↑	15 29 ↑	14 29 ↑	14 28 ↑	13 28 ↑	12 24 ↑	10 22 ↑	9 18 ↑	7 14 ↑	6 13 ↑	6 12 ↑	5 9 ↑	3 8 ↑	3 7 ↑	3 7 ↑	3 8 ↑	3 9 ↑	5 10 ↑	6 10 ↑	6 13 ↑
Houston Pilots M - Kinder 1	13 25 ↑	13 26 ↑	13 26 ↑	13 26 ↑	14 29 ↑	15 29 ↑	14 29 ↑	14 28 ↑	13 26 ↑	12 24 ↑	10 22 ↑	9 18 ↑	7 14 ↑	6 13 ↑	6 12 ↑	5 10 ↑	3 8 ↑	3 7 ↑	3 7 ↑	3 8 ↑	3 9 ↑	5 9 ↑	6 10 ↑	6 12 ↑
Houston Pilots L - Greens Bayou	13 25 ↑	13 26 ↑	13 26 ↑	13 26 ↑	14 28 ↑	15 29 ↑	15 29 ↑	14 28 ↑	13 26 ↑	12 24 ↑	10 22 ↑	9 18 ↑	7 14 ↑	6 13 ↑	6 12 ↑	5 10 ↑	3 8 ↑	3 7 ↑	3 7 ↑	3 8 ↑	3 9 ↑	5 9 ↑	5 10 ↑	6 12 ↑
Houston Pilots K - Shell Crude	13 24 ↑	13 25 ↑	13 26 ↑	13 26 ↑	15 28 ↑	15 28 ↑	14 28 ↑	14 26 ↑	13 25 ↑	12 24 ↑	10 22 ↑	9 18 ↑	7 14 ↑	6 13 ↑	6 12 ↑	5 9 ↑	3 8 ↑	3 7 ↑	3 7 ↑	3 8 ↑	3 9 ↑	5 9 ↑	5 10 ↑	6 12 ↑
Houston Pilots J - Lynchburg Ferries	12 24 ↑	13 25 ↑	13 26 ↑	13 26 ↑	15 28 ↑	15 28 ↑	15 28 ↑	14 26 ↑	13 25 ↑	13 24 ↑	10 22 ↑	9 18 ↑	7 14 ↑	6 13 ↑	6 10 ↑	5 9 ↑	3 8 ↑	3 7 ↑	3 6 ↑	3 7 ↑	3 8 ↑	3 9 ↑	5 9 ↑	5 10 ↑
Houston Pilots I - Exxon 3	16 24 ↑	16 24 ↑	16 25 ↑	16 25 ↑	16 26 ↑	16 26 ↑	15 26 ↑	15 26 ↑	15 25 ↑	14 23 ↑	13 22 ↑	12 18 ↑	10 15 ↑	8 14 ↑	8 13 ↑	7 10 ↑	6 9 ↑	6 8 ↑	5 7 ↑	6 8 ↑	6 9 ↑	6 9 ↑	7 10 ↑	8 12 ↑
Houston Pilots H - Morgans Point	15 24 ↑	15 24 ↑	15 24 ↑	15 25 ↑	16 26 ↑	16 26 ↑	15 26 ↑	15 26 ↑	15 25 ↑	14 23 ↑	13 22 ↑	12 18 ↑	9 15 ↑	8 13 ↑	8 12 ↑	7 10 ↑	6 9 ↑	5 8 ↑	5 7 ↑	5 8 ↑	6 9 ↑	6 9 ↑	7 10 ↑	7 12 ↑
Houston Pilots G - 75/76	17 25 ↑	17 25 ↑	17 26 ↑	17 26 ↑	17 26 ↑	17 28 ↑	16 28 ↑	15 26 ↑	15 25 ↑	15 24 ↑	14 22 ↑	13 20 ↑	10 16 ↑	10 14 ↑	8 13 ↑	8 12 ↑	7 10 ↑	6 8 ↑	5 7 ↑	6 8 ↑	6 9 ↑	7 9 ↑	8 10 ↑	8 12 ↑
Houston Pilots F - 63/64	17 24 ↑	17 25 ↑	17 26 ↑	16 25 ↑	16 26 ↑	16 26 ↑	16 28 ↑	15 26 ↑	15 26 ↑	15 24 ↑	14 22 ↑	13 20 ↑	10 16 ↑	9 14 ↑	8 13 ↑	8 12 ↑	7 10 ↑	6 8 ↑	5 7 ↑	6 8 ↑	6 9 ↑	7 9 ↑	8 10 ↑	8 12 ↑
Houston Pilots E - 51/52	16 24 ↑	17 24 ↑	16 25 ↑	16 25 ↑	16 26 ↑	16 26 ↑	16 26 ↑	15 26 ↑	15 25 ↑	15 24 ↑	14 22 ↑	13 20 ↑	10 16 ↑	10 15 ↑	8 13 ↑	8 12 ↑	7 10 ↑	6 8 ↑	5 7 ↑	5 7 ↑	6 8 ↑	6 9 ↑	7 9 ↑	8 12 ↑
Houston Pilots D - 37/38	16 24 ↑	16 24 ↑	16 25 ↑	16 25 ↑	16 26 ↑	16 26 ↑	16 26 ↑	16 26 ↑	15 25 ↑	15 24 ↑	14 22 ↑	13 20 ↑	10 16 ↑	10 15 ↑	8 14 ↑	8 12 ↑	6 10 ↑	6 8 ↑	3 7 ↑	5 8 ↑	6 8 ↑	6 9 ↑	7 9 ↑	8 10 ↑
Houston Pilots C - 25/26	15 24 ↑	16 24 ↑	16 25 ↑	16 25 ↑	16 25 ↑	16 26 ↑	16 26 ↑	16 26 ↑	15 25 ↑	15 24 ↑	14 22 ↑	13 20 ↑	10 17 ↑	10 15 ↑	8 14 ↑	8 13 ↑	6 10 ↑	6 8 ↑	3 7 ↑	5 8 ↑	5 8 ↑	6 9 ↑	6 9 ↑	7 10 ↑
Houston Pilots B - 11/12	15 23 ↑	15 24 ↑	15 24 ↑	15 24 ↑	15 25 ↑	16 25 ↑	16 25 ↑	15 25 ↑	15 24 ↑	15 23 ↑	14 22 ↑	13 20 ↑	10 17 ↑	9 15 ↑	8 14 ↑	8 13 ↑	6 10 ↑	5 8 ↑	3 7 ↑	3 7 ↑	5 8 ↑	6 9 ↑	6 9 ↑	7 10 ↑
Houston Pilots A - 1 & 2 Bravo	16 24 ↑	16 24 ↑	17 25 ↑	17 25 ↑	17 26 ↑	17 26 ↑	17 28 ↑	17 26 ↑	17 28 ↑	17 26 ↑	15 24 ↑	15 22 ↑	13 21 ↑	13 18 ↑	10 16 ↑	10 15 ↑	8 12 ↑	6 9 ↑	6 8 ↑	6 8 ↑	6 9 ↑	7 9 ↑	8 10 ↑	8 12 ↑

NOTE: This is automated data that may/may not agree with the official BAM thinking that's found on the daily slides.
This data should be used as a guide only.

Houston Pilots: THU. 1/30/2025

Forecast Discussion

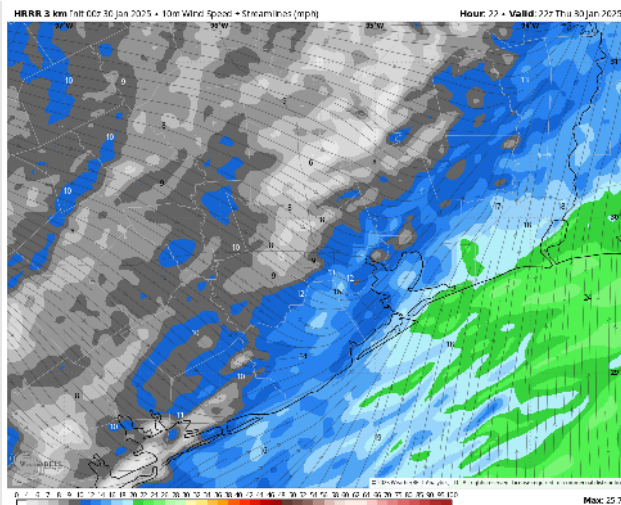
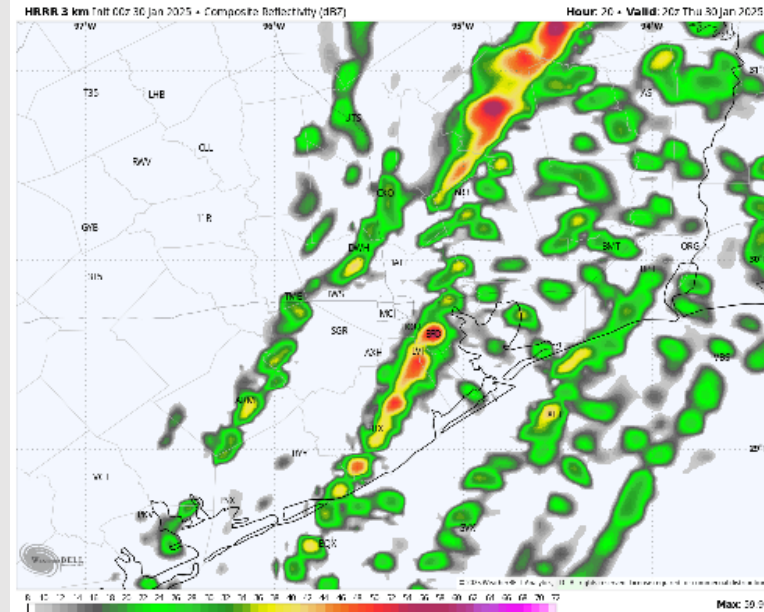
Precip: Favoring rain showers to move in after 11AM and linger through 7PM. From 2PM – 6PM, a few strong to severe storms, will be possible. Isolated hail and brief gusts of up to 45 - 50kts will be possible for all stations!

Wind: Winds will be out of the S/SE through 3 PM, shifting clockwise out of the W/SW by 7 PM. **N of Morgan's Point:** Winds will be at 10 – 15 kts decreasing to 2 – 7 kts after 5 PM. **S of Morgan's Point:** Winds will be 10 – 15 kts through 3 AM, increasing to 18 – 23 kts after that time, then decreasing to 7 – 12 kts after 6 PM. **Non-Thunderstorm wind gusts of 20 – 25 kts in play for all Stations from 12AM to 6PM. From 9AM to 2PM Non-Thunderstorm wind gusts will increase to up to 30 kts for Stations N of Morgan's Point.**

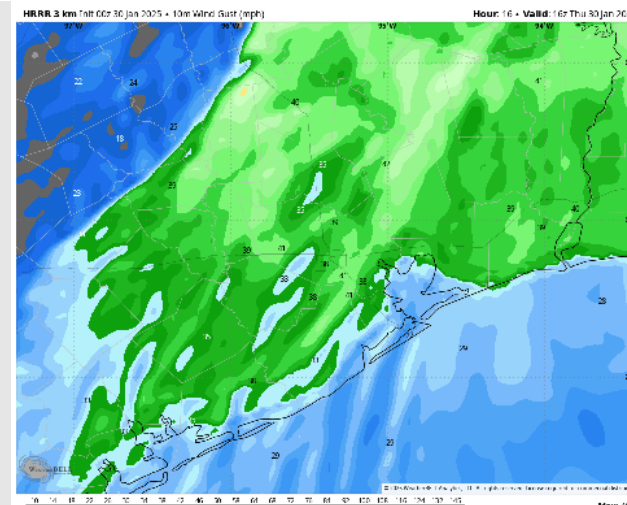
High Temps: **N of Morgan's Point:** Low 70s F. **S of Morgan's Point:** Mid to low 60s F.

Visibility: Monitoring both sea fog and non sea fog risks for the entire day. See visibility graphics for greater detail.

Precip Image: 2 PM CT



Wind Speed:
4 PM CT



PEAK GUSTS
9AM – 2PM

Houston Pilots: FRI. 1/31/2025

Forecast Discussion

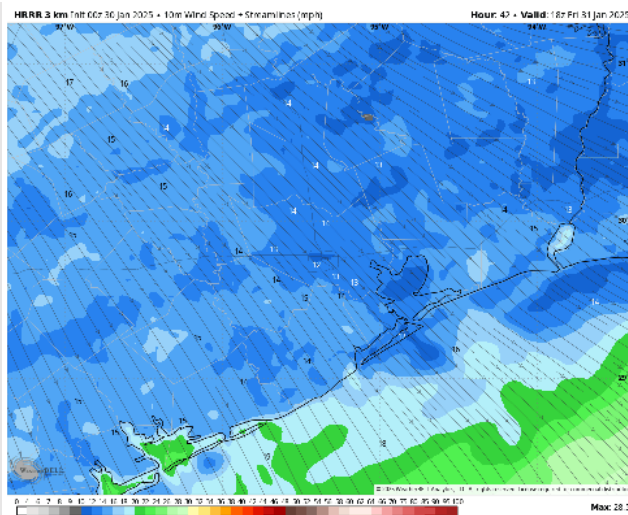
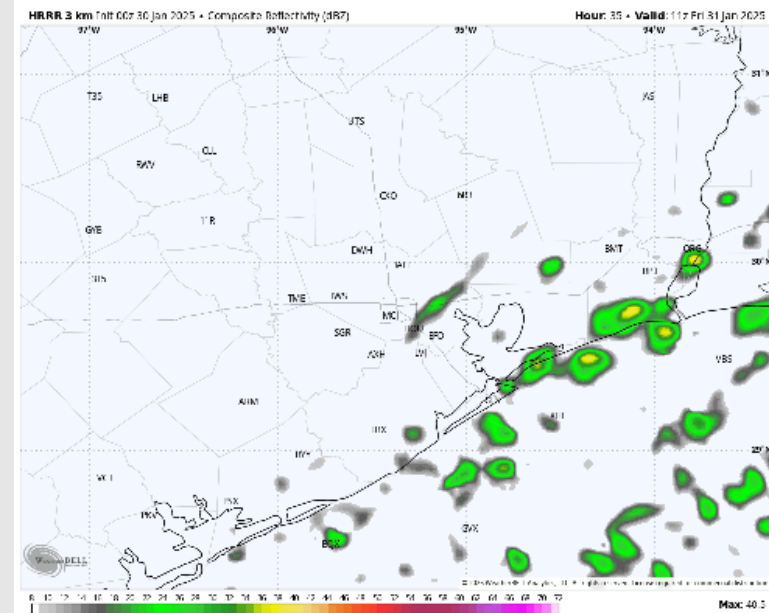
Precip: A few isolated showers (20%) can't be ruled out for all stations through ~7AM. After this time, favoring dry conditions for the remainder of Friday.

Wind: Winds will start out of the W / WSW through 8AM before veering out of the NW, remaining there for the rest of Friday. **N of Morgan's Point:** Winds will be at 5 – 10 kts throughout Friday. **S of Morgan's Point:** Winds will be at 3 – 8 kts through the day with a brief increase in winds of 8 – 13 kts from 8AM to 5PM.

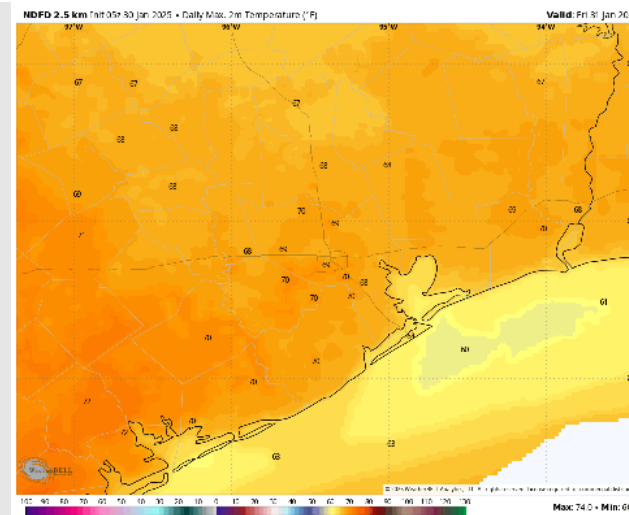
High Temps: **N of Morgan's Point:** Upper 60s to lower 70s F. **S of Morgan's Point:** Low to Mid 60s F.

Visibility: Favoring a non-sea fog risk for stations N of Morgan's Point through 3AM. See visibility graphic for additional thoughts.

Precip Image: 5 AM CT



Wind Speed:
12 PM CT



High Temps
Friday

Houston Pilots: SAT. 2/1/2025

Forecast Discussion

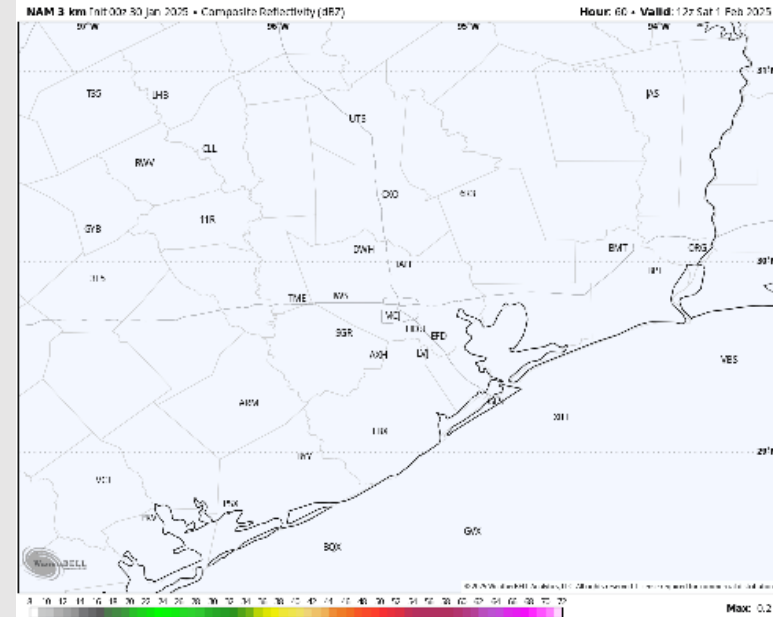
Precip: Favoring dry conditions for Saturday.

Wind: Winds will do a 180-degree clockwise rotation, starting out of the north at 12AM and ending up out of the south by 11PM on Saturday. **N of Morgan's Point:** Winds will be at 4 – 9 kts for all of Saturday. **S of Morgan's Point:** Winds will be at 4 – 9 kts for all of Saturday.

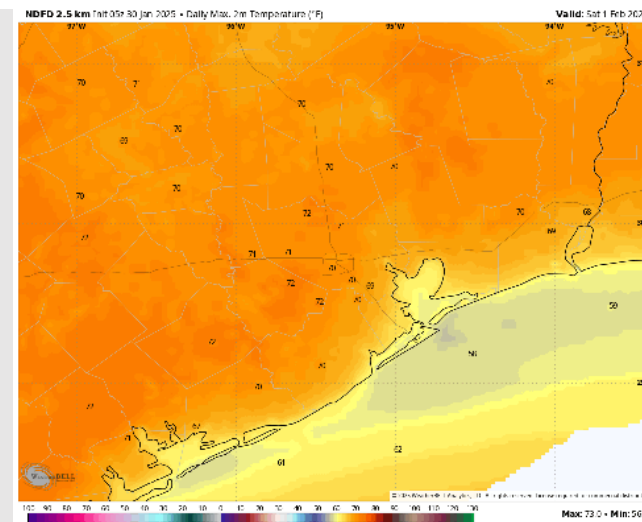
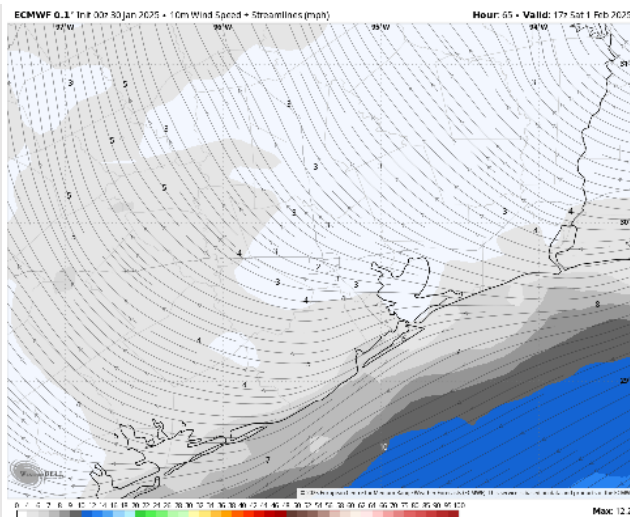
High Temps: **N of Morgan's Point:** Mid 60s F to near 70 F. **S of Morgan's Point:** Upper 50s F.

Visibility: No visibility risks favored for Saturday.

Precip Image: 6 AM CT



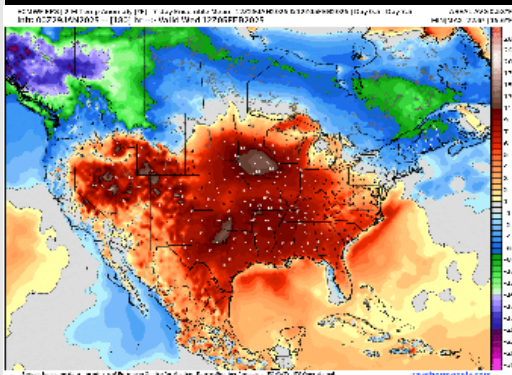
Wind Speed
11 AM CT



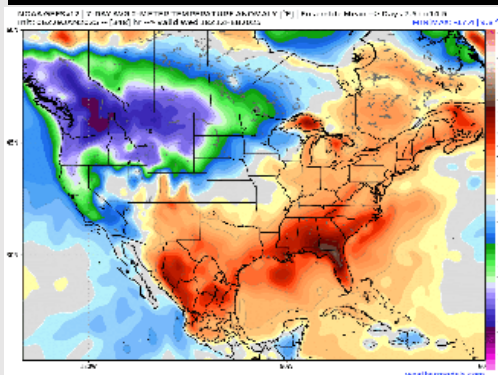
High Temps
Saturday

Houston Pilots: 1/30/25

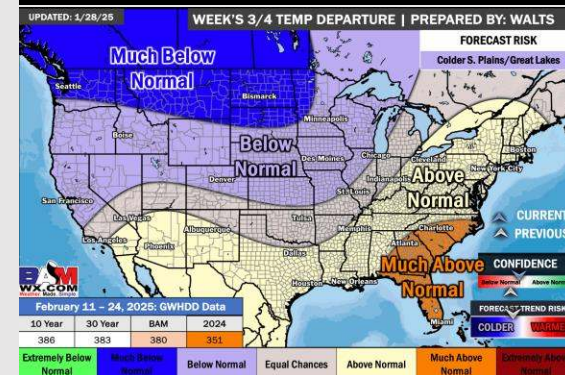
Next 7 Day Temperature Departure



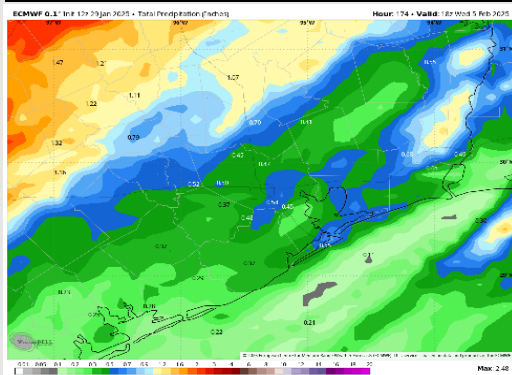
8-14 Day Temperature Departure



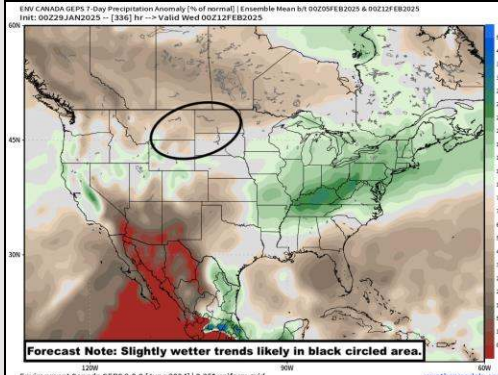
15-30 Day Temperature Departure



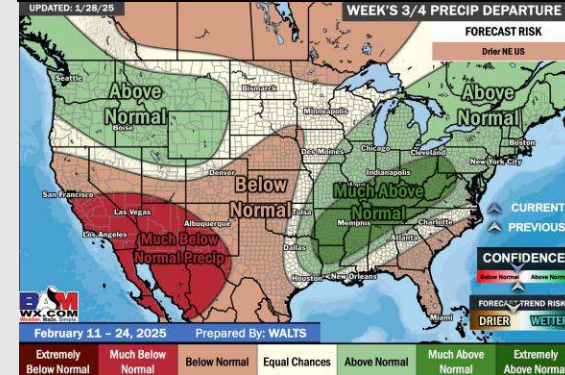
Next 7 Day Total Precipitation



8-14 Day % of Average Precip.



15-30 Day % of Average Precip.



- Temps are expected to be above normal for the week ahead. Favoring scattered rain showers throughout the week, with drier conditions by the weekend/start of next week.
- Above normal temp and slightly below normal rainfall are expected for week 2.
- Above normal temperatures and near normal precipitation chances are expected for the weeks $\frac{3}{4}$ timeframe.