

Houston Pilots Forecast Package



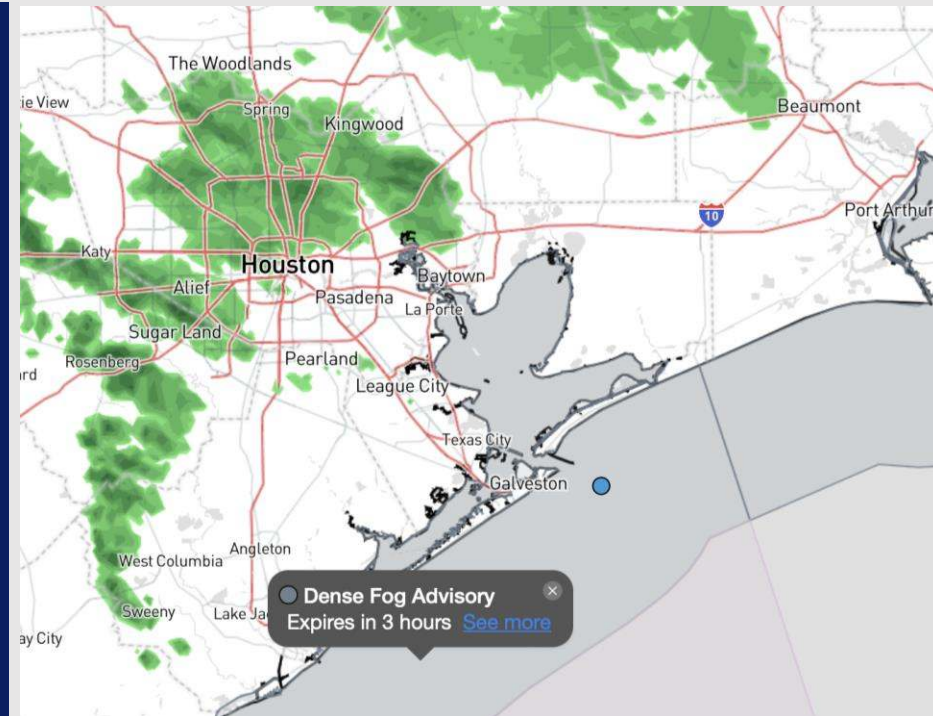
Updated: 5:40 AM CT

Wednesday, January 29, 2025

Forecaster: Alyssa Elliott

Weather Headlines

- **Dense sea fog continues to be the main risk for all stations over the next 36 hours.**
- **We are currently in X-Ray Port conditions as wave heights are anticipated to reach 6 ft by 12PM THU. See wave height slide for more information! [X-RAY Video Update](#)**
- **Strong Storms will be possible Thursday afternoon!**



Current Radar: 5:30 AM CT

As always, please do not hesitate to reach out to us with any forecast questions at **(317)-560-8122**. Press **1** for forecast questions.

You can also access real-time forecast updates and 24/7 meteorological chat assistance on your [Clarity](#) app. Click [here](#) for login assistance.



Houston Pilots Port Trigger Update



Port Condition	34 KTS+ Sustained Wind Trigger Reached at:	6 Foot Wave Trigger Reached at:	Time Remaining/Trigger Ends At:
Victor	---	---	---
Whiskey	---	---	---
X-Ray	---	CURRENT	12 PM WED
Yankee	---	12 PM WED	12 AM THU
Zulu	---	12 AM THU	12 AM FRI

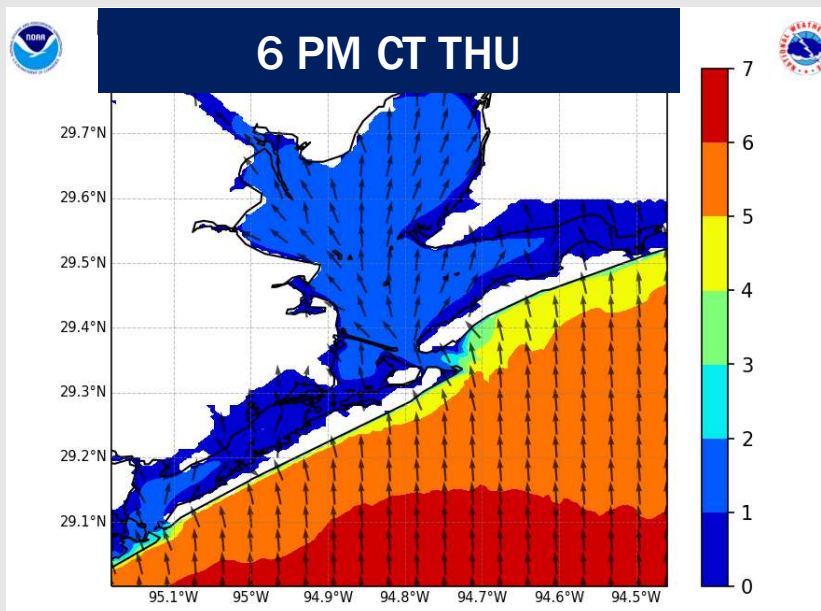
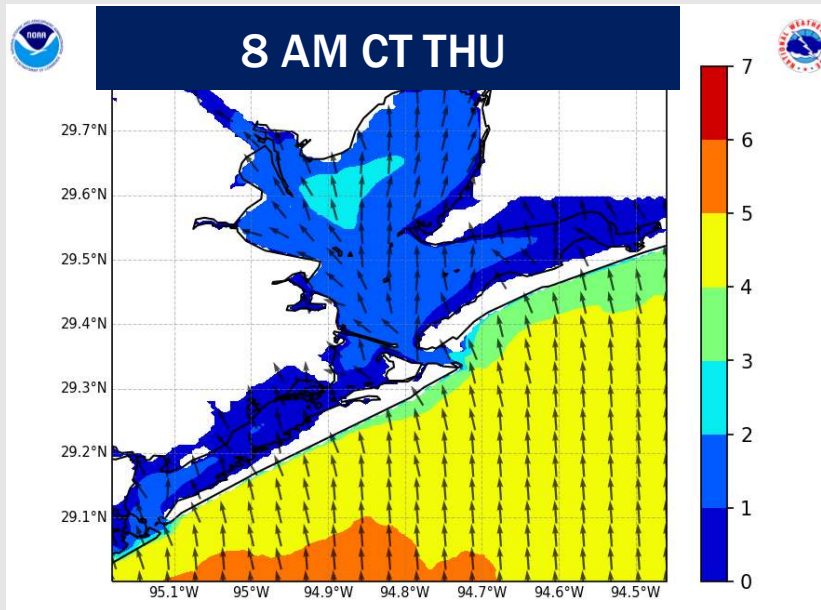
Port Condition	Trigger Definition	Trigger Reached?
Victor	Hurricane entering/developing in Gulf of Mexico that's a threat to the area	N/A
Whiskey	72 hours prior to predicted sustained winds of 34+ KTS	N/A
X-Ray	48 hours prior to predicted sustained winds of 34+ KTS or 6' wave height	YES
Yankee	24 hours prior to predicted sustained winds of 34+ KTS or 6' wave height	NO
Zulu	12 hours prior to predicted sustained winds of 34+ KTS or 6' wave height	NO

NOTES:

With increased winds ahead of a front on Thursday, waves are anticipated to reach 6' by 12PM THU. See wave height slide for more information!

We are keeping an eye on weakening trends! Confidence remains low!

Wave Height Forecast Update



Wave heights at the Boarding Station are expected to increase THU AM, reaching 6' by 12PM THU.

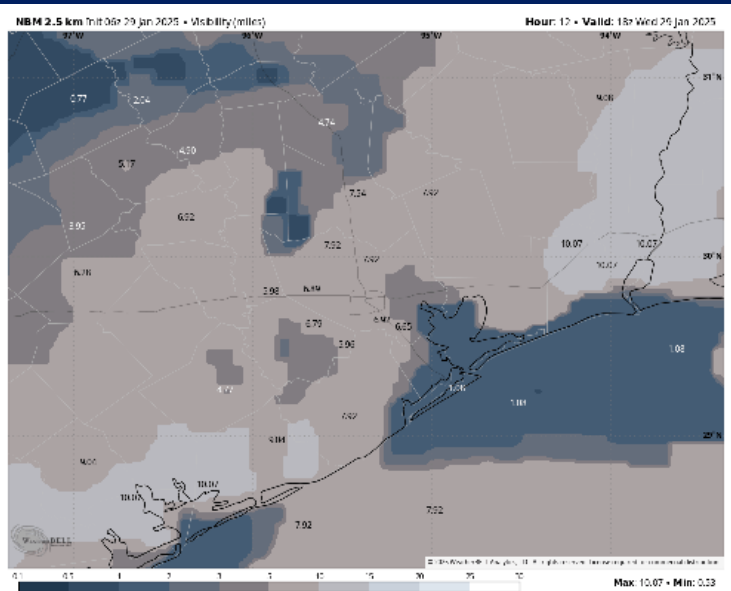
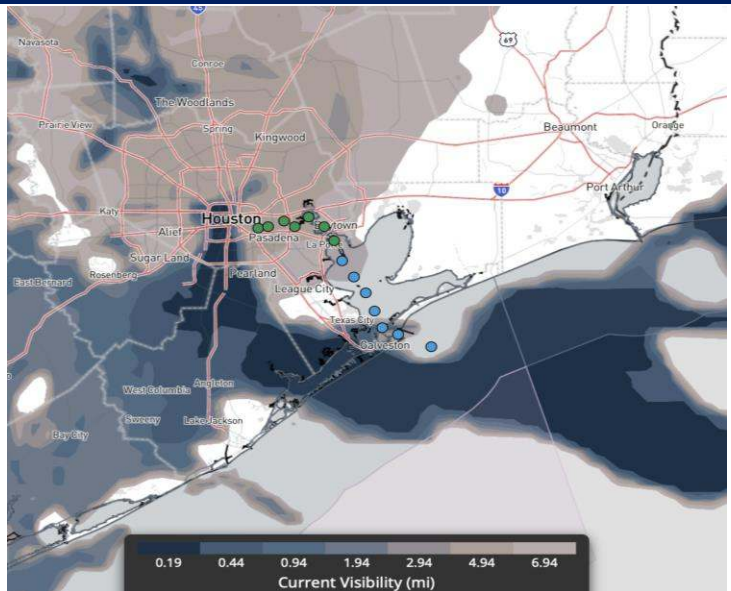
Elevated wave heights of 6' - 7' are anticipated to linger through 12AM FRI, before quickly decreasing throughout FRI AM.

By 10AM FRI, we are favoring wave heights to be at or below 4ft.

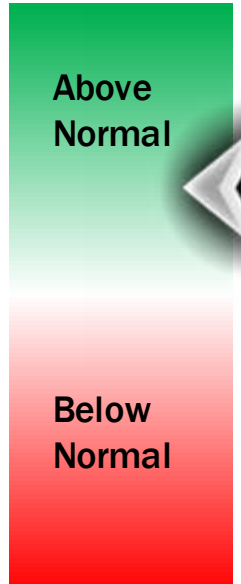
Houston Pilots Visibility Report



CURRENT VISIBILITY (5:15 AM) 12 PM CST WED VISIBILITY



Confidence



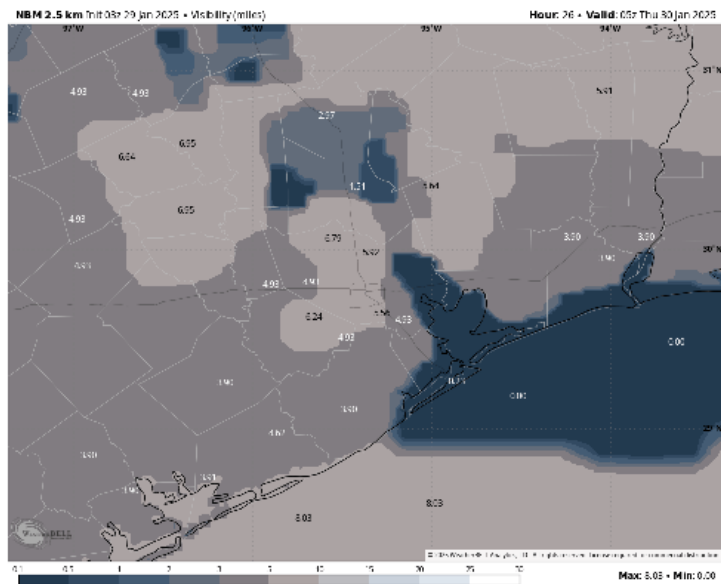
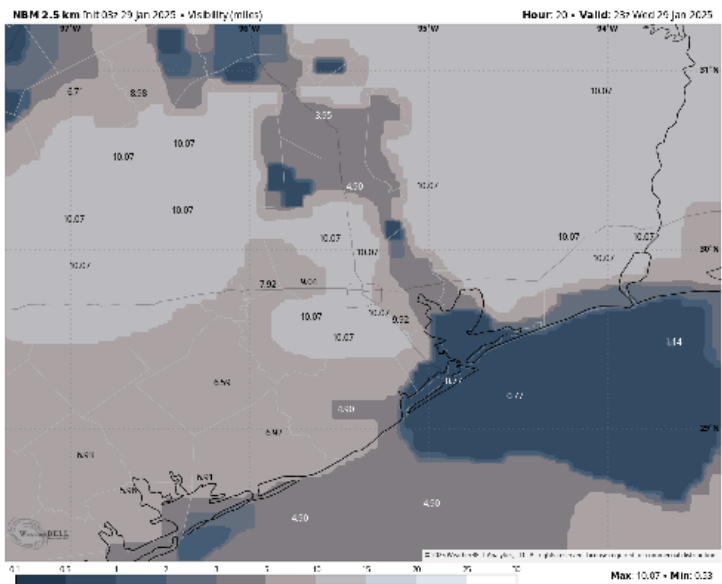
TIMEFRAME DISCUSSED	THREAT
CURRENT - 2 PM WED	Med - High

- The threat for dense sea fog is expected to continue throughout much of the day. **This AM, the greatest threat for visibilities reduced to 0.5 mile or less will be for Morgan's Point stations S.** Meanwhile, stations N of Morgan's Point will continue to have visibilities of 1 - 2 miles with brief instances of less than 1 mile.
- The timeframe with the greatest risk for dense sea fog to be more widespread in nature is now (~5:30 AM) through 9 AM. After 9 AM, it's likely sea fog becomes more patchy and visibilities improve slightly to 1 - 2 miles with isolated pockets of fog dropping visibility to 0.5 mile (greatest threat for this being station 51/52 and S).
- The setup mentioned in the point above will continue with visibility gradually improving (still hazy with 1 - 3 mile visibility) moving into the early afternoon. The Boarding Station however will still be at risk for isolated instances of visibility of 0.5 miles.
- By 2 PM, sea fog will start to again become more dense and widespread. See next slide.

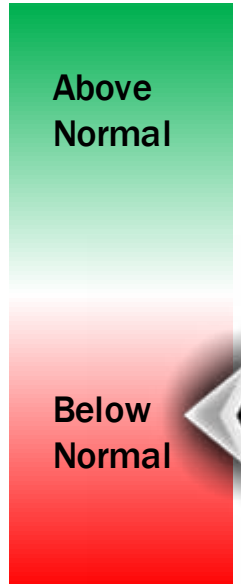
Houston Pilots Visibility Report



5 PM CST WED VISIBILITY 11 PM CST WED VISIBILITY



Confidence



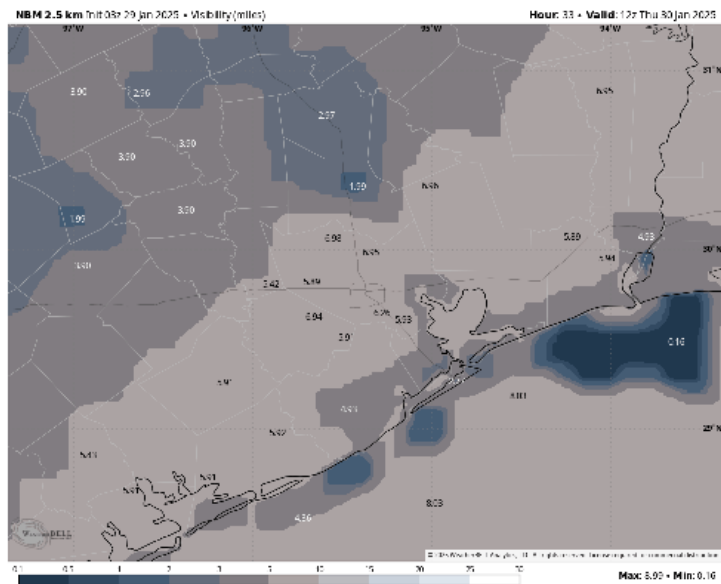
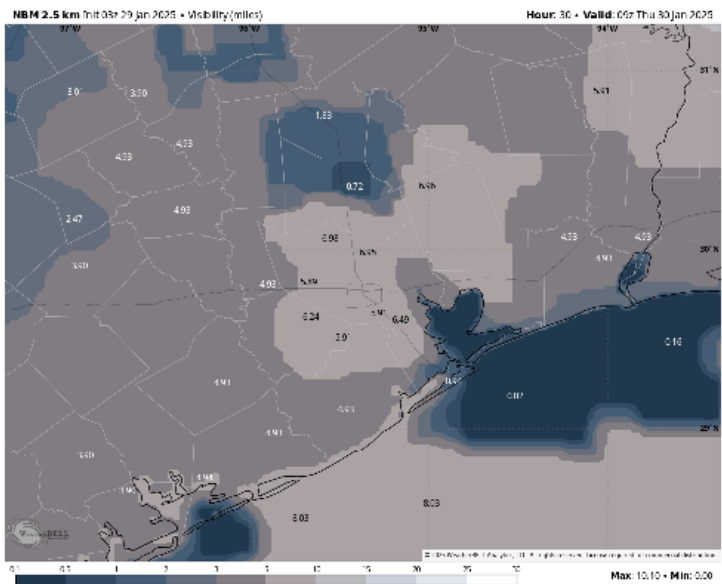
- Confidence is below normal for this time period, especially for Stations N of 11/12 in terms of timing and coverage.
- From 2PM – 8PM, Stations 51/52 through the Boarding Station are favored to see continual periods of patchy, dense fog with visibilities of less than 0.5 miles. Intermittent periods of patchy fog with reduced visibilities of 0.5 mile will be possible for stations between 11/12 and Morgan’s point.
- Once we get beyond 8PM, we are favoring widespread, dense fog to quickly impact all stations (now including stations N of Morgan’s Point), with visibilities of less than 0.5 miles likely.
- Coverage will be at it’s highest as we get towards 12AM Thursday.

TIMEFRAME DISCUSSED	THREAT
2PM WED – 12AM THU	Medium

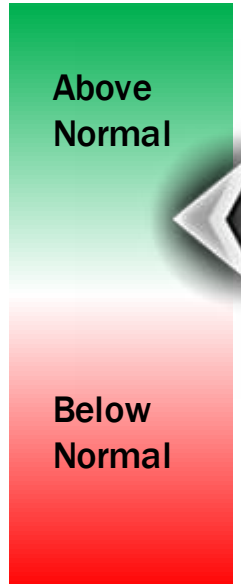
Houston Pilots Visibility Report



3 AM CST THU VISIBILITY 6 AM CST THU VISIBILITY



Confidence



- Visibilities are expected to be less than 0.5 miles for all stations through 4AM. Confidence is above normal for this timeframe.
- After 4AM, widespread fog is expected to become patchier, slowly starting to decrease from Stations N of Morgan's Point towards 11/12 through ~7AM as winds increase. Visibilities will primarily be less than 2 miles for locations impacted by fog.
- From 7AM – 9AM, patchy fog (<1.0 mile) will still be possible at the Boarding Station before burning off thanks to winds / showers approaching the area.
- Confidence is slightly below normal in terms of exact exit timing and will likely need to be refined.

TIMEFRAME DISCUSSED	THREAT
12AM THU – 9AM THU	Med - High

Houston Pilots Extended Range Visibility Report



Saturday 2/1/25

No fog concerns for Saturday at this time.

Forecast Confidence



Sunday 2/2/25

Monitoring an isolated, patchy sea fog risk for Stations 11/12 and the Boarding Station for SUN AM. Confidence is well below normal.

Forecast Confidence



Monday 2/3/25

Monitoring a patchy sea fog risk for Stations S of Morgan's Point for Monday AM.

Forecast Confidence



Chance for Fog

Saturday AM	Unlikely
Saturday PM	Unlikely
Sunday AM	Low-End
Sunday PM	Unlikely
Monday AM	Low-End
Monday PM	Unlikely

Houston Pilots Visibility Chart (miles)



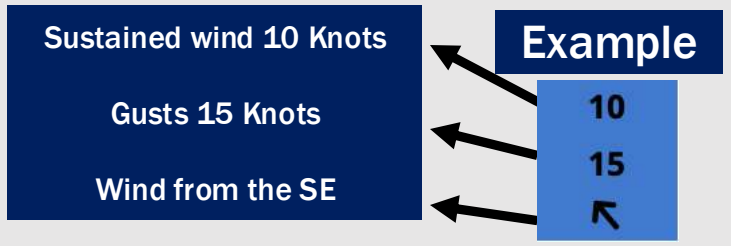
Forecast Confidence



Visibility	Wed 7 am	Wed 8 am	Wed 9 am	Wed 10 am	Wed 11 am	Wed 12 pm	Wed 1 pm	Wed 2 pm	Wed 3 pm	Wed 4 pm	Wed 5 pm	Wed 6 pm	Wed 7 pm	Wed 8 pm	Wed 9 pm	Wed 10 pm	Wed 11 pm	Thu 12 am	Thu 1 am	Thu 2 am	Thu 3 am	Thu 4 am	Thu 5 am	Thu 6 am
Houston Pilots N - 610 Bridge	1.1	0.5	0.3	0.5	0.8	4.9	6.9	7.9	6.9	9	9	9	8	6.9	5.9	4.9	4.9	4.9	4.9	4.9	4.9	4.9	4.9	4.9
Houston Pilots M - Kinder 1	2	0.5	0.3	0.5	0.8	1.6	1.1	5.9	6.9	9	9	9	5.9	5.9	4.9	2.9	2.9	2.9	2.5	2.9	3.9	3.9	3.9	3.9
Houston Pilots L - Greens Bayou	2	0.5	0.3	0.5	0.8	0.8	1.1	1.6	1.6	1.1	2	1.6	1.1	0.7	0.5	0.5	0.2	0.5	0.2	0.2	0.2	0.5	1.1	1.6
Houston Pilots K - Shell Crude	2.5	0.5	0.5	0.5	0.8	1.1	1.1	1.6	1.6	1.1	2	1.6	1.1	0.7	0.5	0.5	0.2	0.5	0.2	0.2	0.2	0.5	1.1	1.1
Houston Pilots J - Lynchburg Ferries	2.5	1.1	0.5	1.1	2.5	0.8	1.1	1.6	1.6	1.1	2	1.6	1.1	0.7	0.5	0.5	0.2	0.5	0.2	0.2	0.2	0.5	1.1	1.1
Houston Pilots I - Exxon 3	2.5	0.8	1.1	1.1	2.9	1.1	1.1	1.6	1.6	1.1	2	1.6	1.1	0.7	0.5	0.5	0.2	0.2	0.2	0.2	0.2	0.5	0.7	1.1
Houston Pilots H - Morgans Point	1.6	0.5	0.3	0.8	1.1	1.1	1.1	1.6	1.6	1.1	2	1.6	1.1	0.7	0.5	0.2	0.2	0.2	0.2	0.2	0.2	0.5	0.7	1.1
Houston Pilots G - 75/76	0.5	0.3	0.3	0.3	0.8	1.1	0.8	1.6	1.6	1.1	2	1.6	1.1	0.5	0.5	0.2	0.2	0.2	0.2	0.2	0.2	0.2	1.6	5
Houston Pilots F - 63/64	0.5	0.3	0.3	0.3	0.8	1.1	0.8	2	1.6	1.1	2	1.6	1.1	0.5	0.5	0.2	0.2	0.2	0.2	0.2	0.2	0.2	1.6	5
Houston Pilots E - 51/52	0.3	0.3	0.3	0.3	0.5	1.1	0.8	2	1.6	1.1	2	2	1.1	0.5	0.5	0.2	0.2	0.2	0.2	0.2	0.2	0.2	2	4
Houston Pilots D - 37/38	0.3	0.3	0.3	0.3	0.5	1.1	0.8	2	1.6	1.1	2	2	1.1	0.5	0.5	0.2	0.2	0.2	0.2	0.2	0.2	0.2	2	2.5
Houston Pilots C - 25/26	0.3	0.3	0.3	0.3	0.5	1.1	0.8	2	1.6	1.1	2	2	1.1	0.5	0.5	0.2	0.2	0.2	0.2	0.2	0.2	0.2	1.6	1.6
Houston Pilots B - 11/12	0.3	0.3	0.3	0.3	0.5	1.1	0.8	2	1.6	1.1	2	2	1.1	0.5	0.5	0.2	0.2	0.2	0.2	0.2	0.2	0.2	0.2	0.2
Houston Pilots A - 1 & 2 Bravo	0.3	0.3	0.3	0.3	0.8	1.1	0.8	2	1.6	1.1	2	2	1.1	0.5	0.5	0.2	0.2	0.2	0.2	0.2	0.2	0.2	0.2	0.2

NOTE: This is automated data that may/may not agree with the official BAM thinking that's found on the daily slides or special visibility report slides. This data should be used as a guide only

Houston Pilots Wind Chart



Wind	Wed 12 am	Wed 1 am	Wed 2 am	Wed 3 am	Wed 4 am	Wed 5 am	Wed 6 am	Wed 7 am	Wed 8 am	Wed 9 am	Wed 10 am	Wed 11 am	Wed 12 pm	Wed 1 pm	Wed 2 pm	Wed 3 pm	Wed 4 pm	Wed 5 pm	Wed 6 pm	Wed 7 pm	Wed 8 pm	Wed 9 pm	Wed 10 pm	Wed 11 pm
Houston Pilots N - 610 Bridge	6 12 ←	6 12 ←	6 12 ←	6 12 ←	6 13 ←	6 13 ←	6 14 ←	6 14 ←	7 14 ←	7 15 ←	7 15 ←	8 16 ←	8 17 ←	9 18 ←	9 20 ←	9 20 ←	9 20 ←	10 20 ←	9 18 ←	9 18 ←	9 20 ←	9 20 ←	10 20 ←	10 21 ←
Houston Pilots M - Kinder 1	6 12 ←	6 12 ←	6 12 ←	6 12 ←	6 13 ←	6 13 ←	6 14 ←	6 14 ←	7 14 ←	7 15 ←	7 15 ←	8 16 ←	8 17 ←	9 18 ←	9 20 ←	9 20 ←	9 20 ←	10 20 ←	9 18 ←	9 18 ←	9 20 ←	9 20 ←	10 20 ←	10 21 ←
Houston Pilots L - Greens Bayou	5 10 ←	6 12 ←	6 12 ←	6 12 ←	6 13 ←	6 13 ←	6 14 ←	6 14 ←	7 15 ←	7 15 ←	7 15 ←	8 16 ←	8 17 ←	9 18 ←	9 20 ←	9 18 ←	10 20 ←	10 18 ←	9 18 ←	9 18 ←	9 20 ←	9 20 ←	10 20 ←	10 21 ←
Houston Pilots K - Shell Crude	5 10 ←	6 12 ←	6 12 ←	6 12 ←	6 13 ←	6 13 ←	6 14 ←	6 14 ←	7 15 ←	7 15 ←	7 15 ←	8 16 ←	8 17 ←	9 18 ←	9 18 ←	9 20 ←	10 20 ←	10 18 ←	9 18 ←	9 18 ←	9 18 ←	9 20 ←	9 20 ←	10 21 ←
Houston Pilots J - Lynchburg Ferries	5 10 ←	5 10 ←	5 10 ←	5 12 ←	6 12 ←	6 13 ←	6 13 ←	6 14 ←	6 14 ←	6 14 ←	7 15 ←	8 16 ←	8 17 ←	9 18 ←	9 18 ←	9 20 ←	10 20 ←	10 18 ←	9 18 ←	9 18 ←	9 18 ←	9 20 ←	9 20 ←	10 21 ←
Houston Pilots I - Exxon 3	8 12 ←	8 13 ←	8 13 ←	8 13 ←	8 14 ←	8 14 ←	9 15 ←	9 15 ←	9 15 ←	9 15 ←	9 15 ←	10 16 ←	10 17 ←	10 18 ←	10 20 ←	10 20 ←	10 20 ←	12 18 ←	13 18 ←	13 20 ←	13 20 ←	13 20 ←	14 20 ←	15 21 ←
Houston Pilots H - Morgans Point	8 12 ←	8 13 ←	8 13 ←	8 13 ←	8 14 ←	8 14 ←	8 14 ←	9 15 ←	9 15 ←	9 15 ←	9 15 ←	9 16 ←	10 17 ←	10 18 ←	10 18 ←	10 20 ←	10 20 ←	12 18 ←	12 18 ←	12 18 ←	13 20 ←	13 20 ←	13 20 ←	14 21 ←
Houston Pilots G - 75/76	9 13 ←	9 14 ←	9 14 ←	10 14 ←	10 15 ←	10 15 ←	10 15 ←	10 16 ←	10 16 ←	10 16 ←	10 17 ←	10 17 ←	10 17 ←	10 18 ←	10 20 ←	10 18 ←	12 20 ←	13 20 ←	13 20 ←	13 20 ←	13 20 ←	14 20 ←	15 21 ←	15 22 ←
Houston Pilots F - 63/64	9 13 ←	9 14 ←	9 14 ←	10 15 ←	10 15 ←	10 15 ←	10 15 ←	10 16 ←	10 17 ←	10 17 ←	10 17 ←	10 17 ←	10 17 ←	10 18 ←	10 18 ←	10 20 ←	10 18 ←	12 18 ←	13 18 ←	13 18 ←	13 20 ←	14 20 ←	14 21 ←	15 22 ←
Houston Pilots E - 51/52	9 14 ←	9 14 ←	9 14 ←	10 15 ←	10 15 ←	10 15 ←	10 15 ←	10 16 ←	10 16 ←	10 16 ←	10 17 ←	10 17 ←	10 17 ←	10 18 ←	10 18 ←	10 20 ←	10 18 ←	12 17 ←	12 17 ←	13 18 ←	13 18 ←	13 20 ←	14 20 ←	14 21 ←
Houston Pilots D - 37/38	9 14 ←	9 14 ←	9 14 ←	10 15 ←	10 15 ←	10 15 ←	10 15 ←	10 16 ←	10 16 ←	10 16 ←	10 16 ←	10 17 ←	10 17 ←	10 17 ←	10 18 ←	10 18 ←	10 20 ←	10 18 ←	12 17 ←	12 17 ←	13 18 ←	13 18 ←	13 20 ←	14 21 ←
Houston Pilots C - 25/26	9 14 ←	9 15 ←	9 15 ←	10 15 ←	10 15 ←	10 15 ←	10 15 ←	10 16 ←	10 16 ←	10 16 ←	10 16 ←	10 17 ←	10 17 ←	10 17 ←	10 18 ←	10 18 ←	10 20 ←	10 18 ←	12 17 ←	12 17 ←	13 18 ←	13 20 ←	13 20 ←	13 21 ←
Houston Pilots B - 11/12	8 15 ←	8 15 ←	9 15 ←	9 15 ←	9 15 ←	9 15 ←	10 15 ←	10 16 ←	10 16 ←	10 16 ←	10 16 ←	10 17 ←	10 17 ←	10 17 ←	10 17 ←	10 17 ←	10 16 ←	10 17 ←	10 16 ←	10 17 ←	12 18 ←	12 20 ←	13 20 ←	13 21 ←
Houston Pilots A - 1 & 2 Bravo	10 16 ←	10 16 ←	10 16 ←	10 16 ←	12 16 ←	12 16 ←	12 16 ←	12 16 ←	12 17 ←	12 17 ←	12 17 ←	12 17 ←	12 17 ←	10 17 ←	10 17 ←	10 17 ←	10 18 ←	10 18 ←	12 18 ←	13 18 ←	13 20 ←	14 20 ←	15 21 ←	15 22 ←

NOTE: This is automated data that may/may not agree with the official BAM thinking that's found on the daily slides. This data should be used as a guide only.

Houston Pilots: WED. 1/29/2025



Forecast Discussion

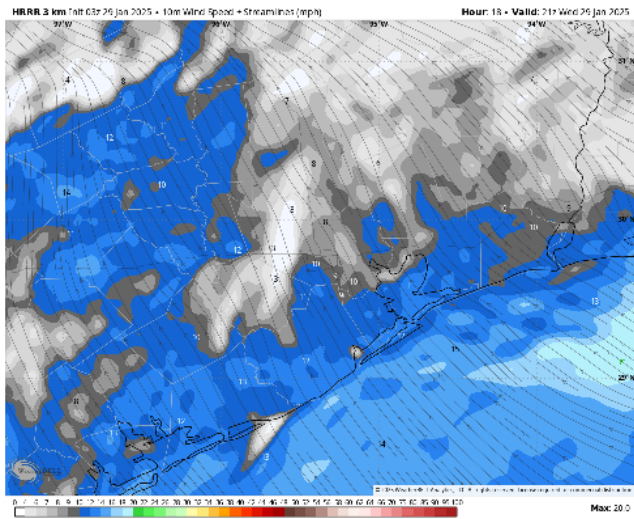
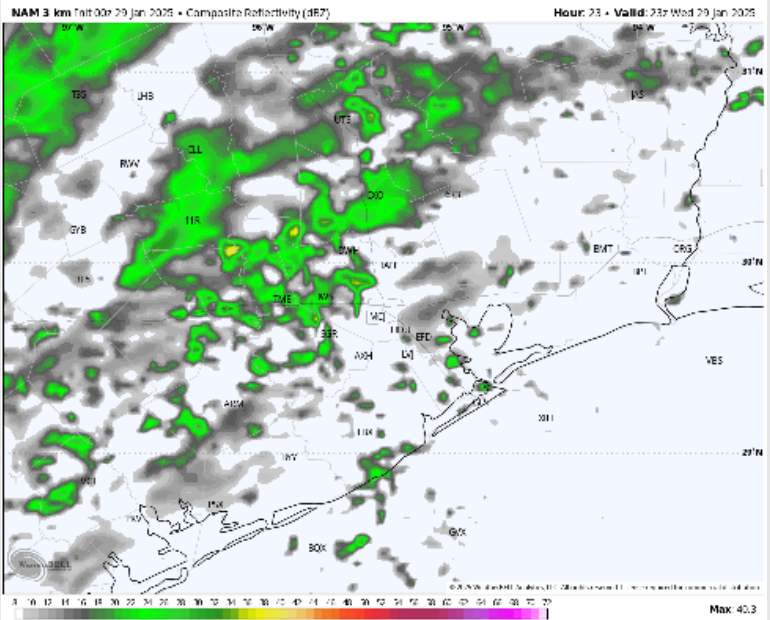
Precip: Scattered showers (20-30%) will be possible from 2AM – 9AM before clearing out through the early afternoon. From 4PM – 8PM, a few isolated showers/drizzles (20%) will be possible, mainly for stations N of 11/12.

Wind: Winds will be out of the SE throughout the day. **N of Morgan's Point:** Winds will be at 4 – 9 kts for the entire day. **S of Morgan's Point:** Winds will be at 5 – 10 kts through 8AM, increasing slightly to 8 – 13 kts after that time and continuing there for the remainder of the day.

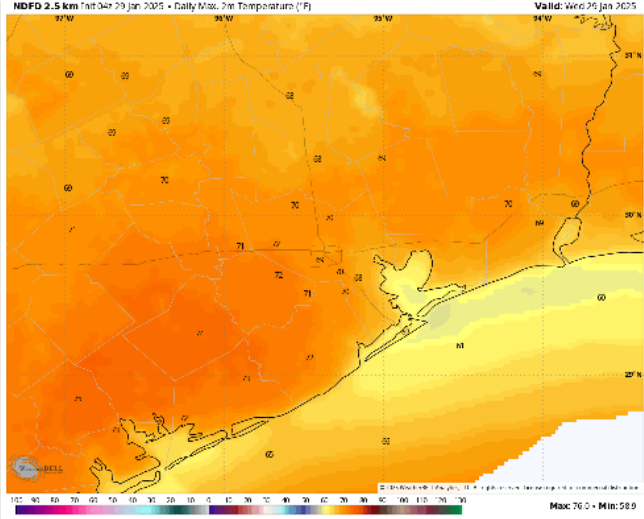
High Temps: **N of Morgan's Point:** Upper 60s to low 70s F. **S of Morgan's Point:** Low to mid 60s F.

Visibility: Monitoring risks for patchy to widespread, dense sea-fog throughout the day. See visibility graphic for more info.

Precip Image: 6 PM CT



Wind Speed
3 PM CT



High Temps
Today

Forecast Discussion

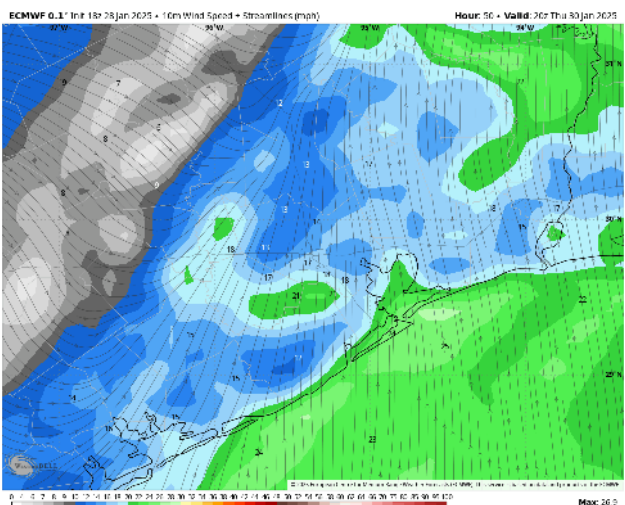
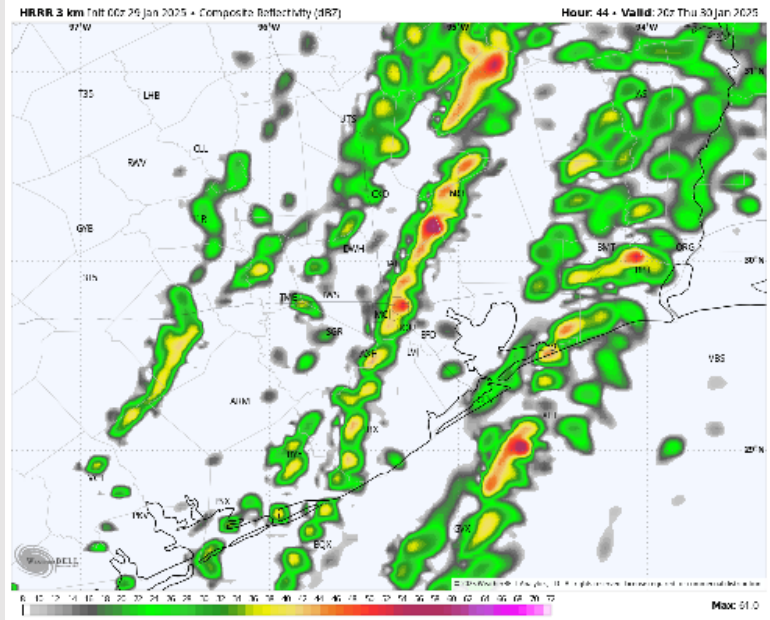
Precip: Favoring rain showers to move in after 11AM and linger through 7PM. After 2PM, A few strong storms, will be possible through ~6PM as the front pushes through. Isolated hail and gusts of up to 45kts will be possible!

Wind: Winds will be out of the S/SE through 4 PM, shifting clockwise out of the W/SW by 8 PM. **N of Morgan's Point:** Winds will be at 4 – 9 kts through 5 AM, increasing to 10 – 15 kts after that time, then decreasing to 2 – 7 kts after 7 PM. **S of Morgan's Point:** Winds will be 10 – 15 kts through 4 AM, increasing to 18 – 23 kts after that time, then decreasing to 7 – 12 kts after 7 PM. **Non-Thunderstorm wind gusts of 20 – 25 kts in play for all Stations from 12AM to 7PM. From 9AM to 2PM Non-Thunderstorm wind gusts will increase to up to 30 kts from all Stations.**

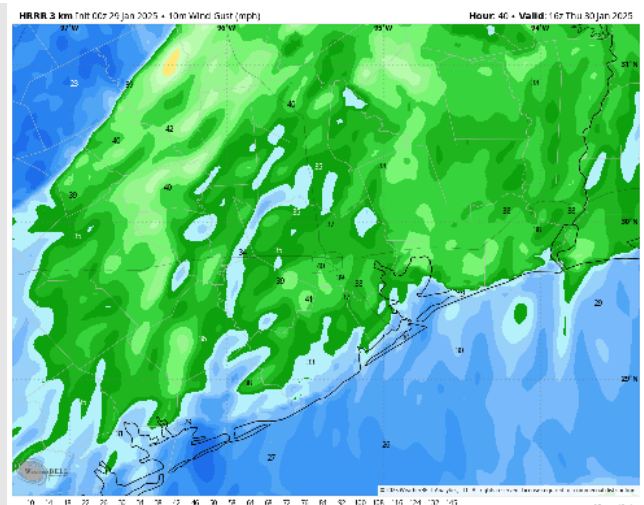
High Temps: **N of Morgan's Point:** Low 70s F. **S of Morgan's Point:** Mid to low 60s F.

Visibility: Monitoring a dense sea fog risk for Stations S of Morgan's Point THU AM prior to the arrival of scattered showers.

Precip Image: 2 PM CT



**Wind Speed:
2 PM CT**



**PEAK GUSTS
9AM – 2PM**

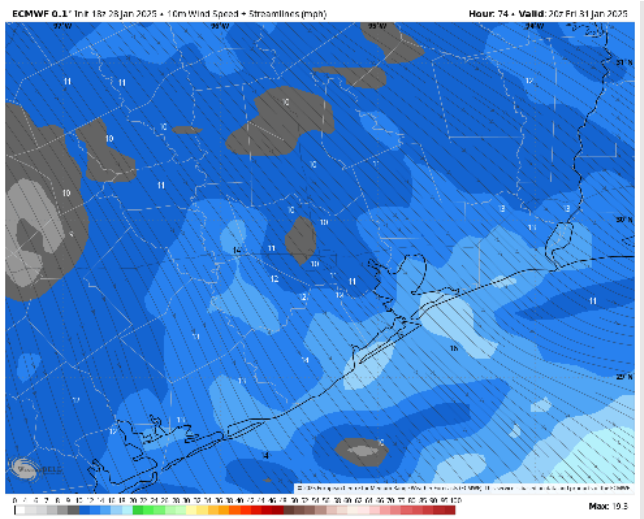
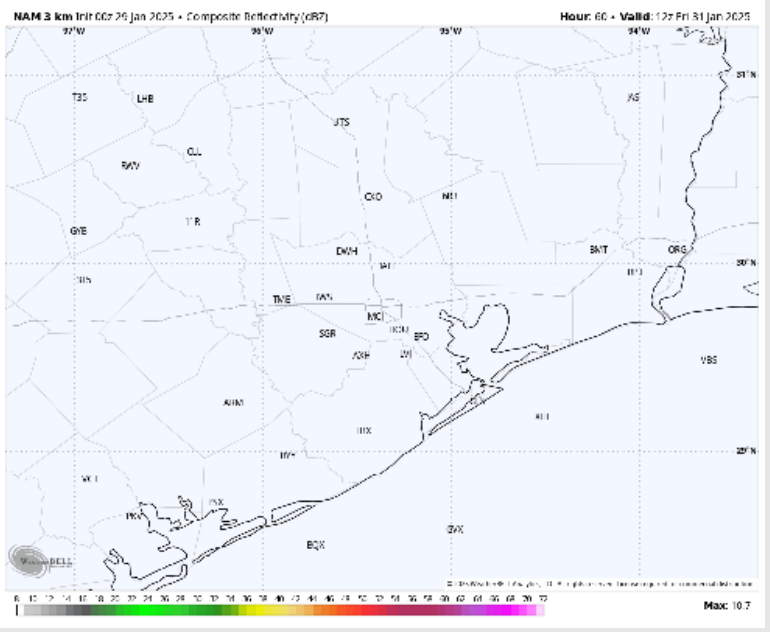
Houston Pilots: FRI. 1/31/2025



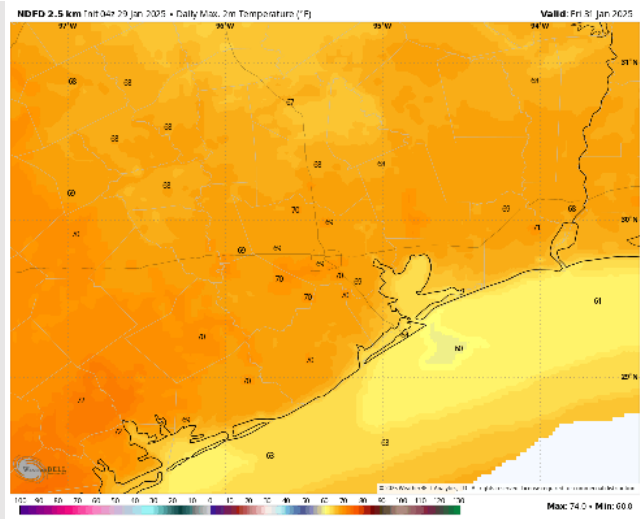
Forecast Discussion

- Precip:** Favoring dry conditions for Friday
- Wind:** Winds will start out of the W / WSW through 2PM before veering out of the NW, remaining there for the rest of Friday. **N of Morgan's Point:** Winds will be at 3 – 8 kts throughout Friday. **S of Morgan's Point:** Winds will be at 3 – 8 kts through 12PM before increasing to 6 – 11 kts for the remainder of Friday.
- High Temps:** **N of Morgan's Point:** Upper 60s / Lower 70s F. **S of Morgan's Point:** Low to Mid 60s F.
- Visibility:** Not favoring any fog risks for Friday AM.

Precip Image: 6 AM CT



Wind Speed:
3 PM CT

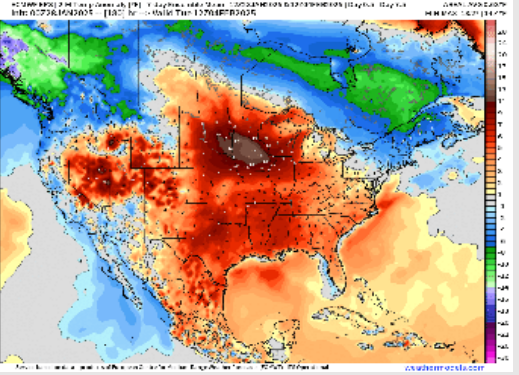


High Temps
Friday

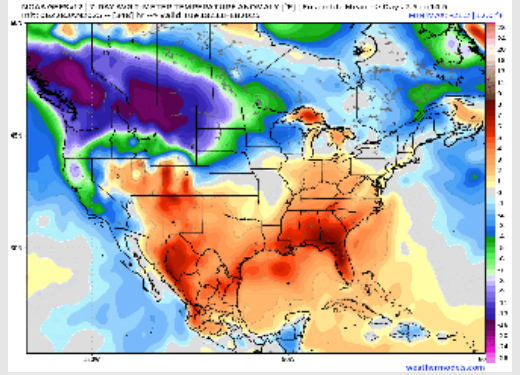
Houston Pilots: 1/29/25



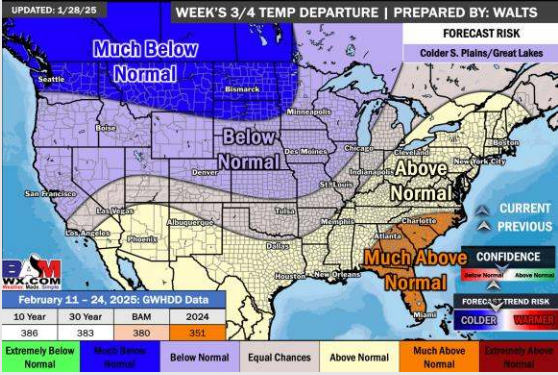
Next 7 Day Temperature Departure



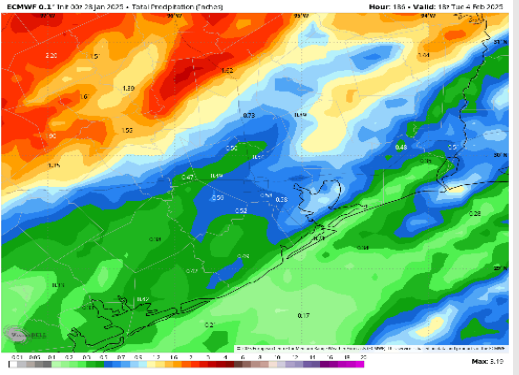
8-14 Day Temperature Departure



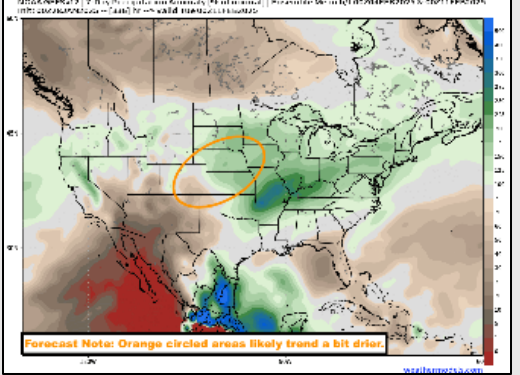
15-30 Day Temperature Departure



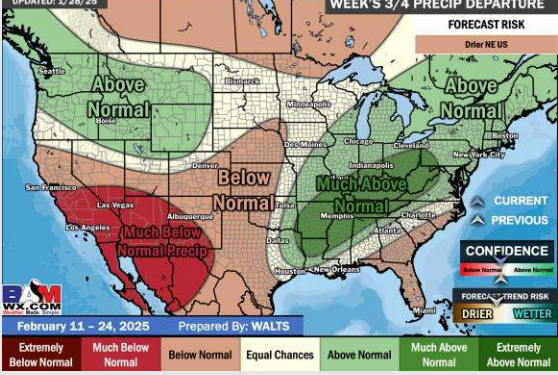
Next 7 Day Total Precipitation



8-14 Day % of Average Precip.



15-30 Day % of Average Precip.



- Temps are expected to be above normal for the week ahead. Favoring scattered rain showers throughout the week, with drier conditions by the weekend.
- Above normal temp and near normal rainfall are expected for week 2.
- Above normal temperatures and near normal precipitation chances are expected for the weeks 3/4 timeframe.