

Houston Pilots Forecast Package



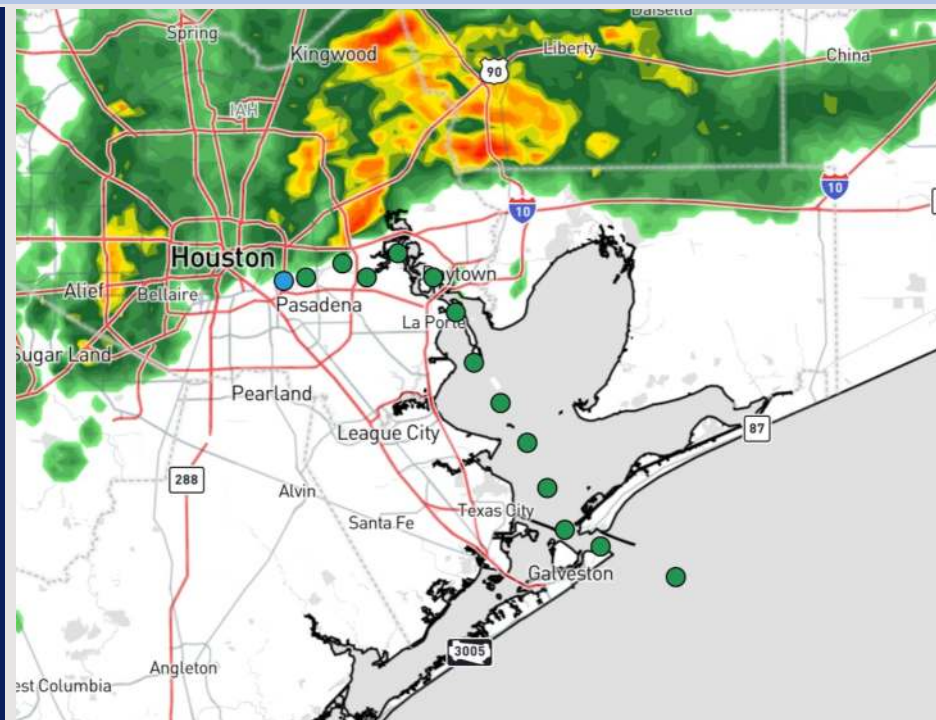
Updated: 6:30 PM CT

Sunday, January 26, 2025

Forecaster: Tyler Riggles

Weather Headlines

- **Low-end risk for sea-fog possible this evening into MON AM. Check the visibility slide for more info.**
- **Wind gusts of 20-30 kts favored for Stations S. of Morgan's Point today.**
- **Rain chances continue through through MON AM.**



Current Radar: 6:15 PM CT

As always, please do not hesitate to reach out to us with any forecast questions at **(317)-560-8122**. Press **1** for forecast questions.

You can also access real-time forecast updates and 24/7 meteorological chat assistance on your [Clarity](#) app. Click [here](#) for login assistance.

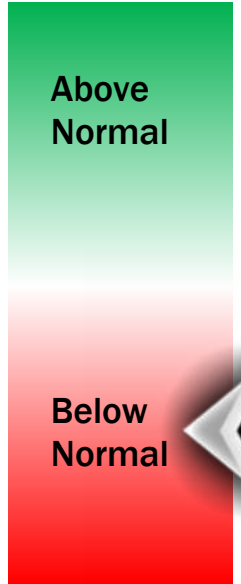
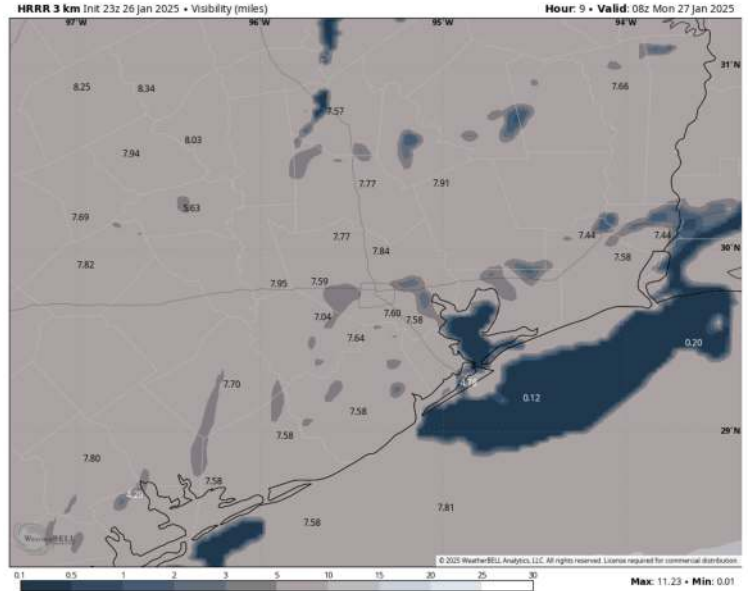
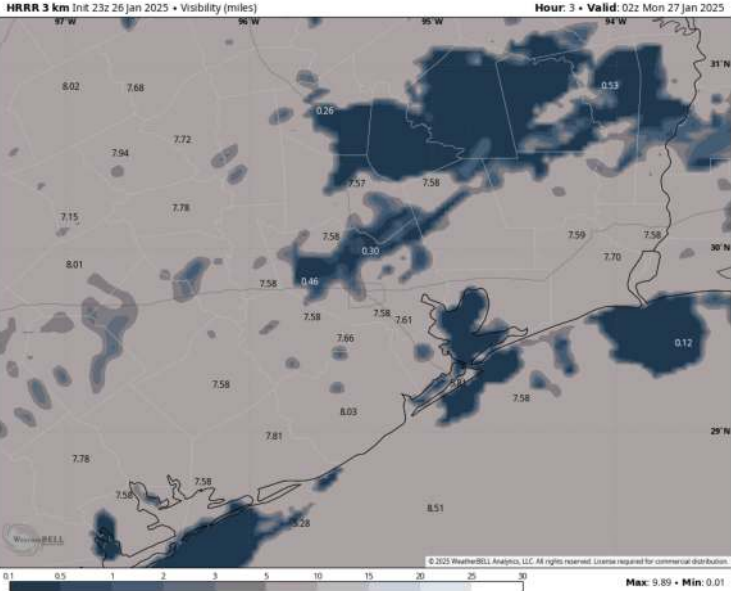


Houston Pilots Visibility Report



8 PM CST SUN VISIBILITY 2 AM CST MON VISIBILITY

Confidence



➤ We continue to watch for potential fog development alongside scattered light showers/mist SUN PM into MON AM for Stations S of Morgan’s Point.

➤ With any fog that forms, visibilities can be reduced to <1.0 mile for Stations S. of Morgan’s Point. The greatest risk is favored to be between 10 PM SUN - 2 AM MON.

➤ Uncertainty lies in start time of fog formation. Main risk is an earlier start time.

TIMEFRAME DISCUSSED	THREAT
8 PM SUN – 5 AM MON	Low-End

Houston Pilots Extended Range Visibility Report



Wednesday 1/29/25

Monitoring a moderate risk for sea fog for stations S of Morgan's Point during WED AM and PM, before and after rain showers move through.



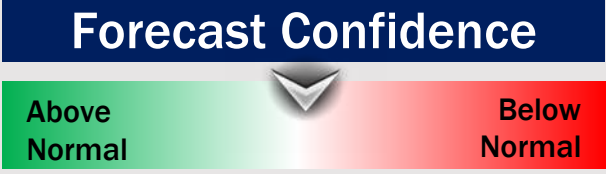
Friday 1/31/25

Monitoring a low-end risk for sea fog FRI AM.



Thursday 1/30/25

Not favoring any fog risks for Thursday, however visibilities can be reduced under heavy showers.



Chance for Fog

Wednesday AM	Moderate
Wednesday PM	Moderate
Thursday AM	Unlikely
Thursday PM	Unlikely
Friday AM	Low-End
Friday PM	Unlikely

Houston Pilots Visibility Chart (miles)



Forecast Confidence



Visibility	Sun 8 pm	Sun 9 pm	Sun 10 pm	Sun 11 pm	Mon 12 am	Mon 1 am	Mon 2 am	Mon 3 am	Mon 4 am	Mon 5 am	Mon 6 am	Mon 7 am	Mon 8 am	Mon 9 am	Mon 10 am	Mon 11 am	Mon 12 pm	Mon 1 pm	Mon 2 pm	Mon 3 pm	Mon 4 pm	Mon 5 pm	Mon 6 pm	Mon 7 pm
Houston Pilots N - 610 Bridge	2.9	1.6	2.9	2.9	2.5	2	2.5	2.5	2.5	2.5	2.5	2.9	2.5	1.6	2.5	2.9	3.9	6.9	5.9	5.9	6.9	6.9	7.9	10
Houston Pilots M - Kinder 1	2.9	1.6	2.9	2.9	2.5	2.5	2.5	2.5	2.5	2.5	2.9	2.9	2.5	1.6	2.5	2.9	3.9	6.9	5.9	5.9	6.9	6.9	7.9	10
Houston Pilots L - Greens Bayou	2.9	2.5	2.9	2.9	2.5	2.5	2.5	2.5	2.5	2.5	2.9	2.9	2.5	1.6	2.5	2.9	3.9	6.9	5.9	6.9	6.9	6.9	7.9	10
Houston Pilots K - Shell Crude	2.9	2.9	2.9	2.9	2.5	2.5	2.5	2.5	2.5	2.5	2.9	2.9	2.5	1.6	2.5	2.9	3.9	6.9	5.9	6.9	6.9	6.9	7.9	10
Houston Pilots J - Lynchburg Ferries	2.9	2.9	2.9	2.9	2.5	2.5	2.5	2.5	2.5	2.5	2.9	2.9	2.5	1.6	2.5	2.9	3.9	6.9	6.9	6.9	6.9	6.9	7.9	10
Houston Pilots I - Exxon 3	2.9	2.9	2.9	2.5	2.5	2.9	2.5	2.5	2.5	2.9	2.9	2.9	2.5	1.6	2.5	2.9	3.9	6.9	5.9	6.9	6.9	6.9	7.9	9
Houston Pilots H - Morgans Point	2.5	2.9	2.9	2.5	2.5	2.9	2.5	2.5	2.5	2.9	2.9	2.9	2.5	1.6	2.5	2.9	3.9	6.9	5.9	6.9	6.9	6.9	6.9	9
Houston Pilots G - 75/76	1.6	0.8	0.8	1.1	0.8	1.1	2.5	2.9	2.9	3.9	3.9	3.9	2.9	2	2.5	2.9	3.9	4.9	4.9	4.9	5.9	5.9	9	9
Houston Pilots F - 63/64	3.9	2.5	1.1	1.1	0.3	0.8	1.1	2.9	2.9	3.9	3.9	3.9	2.9	2	2.9	2.9	3.9	4.9	4.9	4.9	5.9	5.9	9	9
Houston Pilots E - 51/52	4.9	3.9	3.9	2.9	0.3	0.8	1.1	0.5	2.9	4.9	3.9	3.9	2.9	2	2.9	3.9	3.9	4.9	4.9	4.9	5.9	5.9	9	9
Houston Pilots D - 37/38	4.9	4.9	4.9	3.9	1.1	0.8	1.1	0.5	3.9	4.9	3.9	3.9	2.9	2	2.9	3.9	3.9	4.9	4.9	4.9	5.9	5.9	9	8
Houston Pilots C - 25/26	5.9	4.9	4.9	4.9	2.9	1.1	1.6	2.9	3.9	4.9	3.9	3.9	2.9	2	2.9	3.9	3.9	4.9	4.9	4.9	5.9	5.9	9	8
Houston Pilots B - 11/12	5.9	4.9	4.9	3.9	2.9	0.8	1.1	2.9	4.9	4.9	3.9	3.9	2.9	2	2.9	3.9	3.9	4.9	4.9	4.9	5.9	5.9	8	8
Houston Pilots A - 1 & 2 Bravo	5.9	5.9	5.9	4.9	1.6	0.8	0.5	1.1	4.9	4.9	3.9	3.9	3.9	2.5	2.9	3.9	3.9	4.9	4.9	4.9	4.9	4.9	8	8

NOTE: This is automated data that may/may not agree with the official BAM thinking that's found on the daily slides or special visibility report slides. This data should be used as a guide only

Houston Pilots Wind Chart



Sustained wind 10 Knots

Gusts 15 Knots

Wind from the SE

Example

10
15
↙

Wind	Sun 1 pm	Sun 2 pm	Sun 3 pm	Sun 4 pm	Sun 5 pm	Sun 6 pm	Sun 7 pm	Sun 8 pm	Sun 9 pm	Sun 10 pm	Sun 11 pm	Mon 12 am	Mon 1 am	Mon 2 am	Mon 3 am	Mon 4 am	Mon 5 am	Mon 6 am	Mon 7 am	Mon 8 am	Mon 9 am	Mon 10 am	Mon 11 am	Mon 12 pm
Houston Pilots N - 610 Bridge	8 17 ↑	8 17 ↑	8 17 ↑	8 17 ↑	7 15 ↑	6 14 ↗	6 13 →	5 10 ↘	5 9 ↓	3 9 ↓	5 9 ↓	5 9 ↓	5 10 ↓	6 10 ↓	6 12 ↓	6 13 ↓	6 14 ↓	7 14 ↓	8 15 ↓	8 16 ↓	8 16 ↓	8 17 ↓	8 16 ↓	8 16 ↓
Houston Pilots M - Kinder 1	8 17 ↑	8 17 ↑	8 18 ↑	8 17 ↑	7 16 ↑	7 14 ↗	6 13 →	5 10 ↘	5 9 ↓	3 9 ↓	3 9 ↓	5 9 ↓	5 10 ↓	6 10 ↓	6 12 ↓	6 13 ↓	6 14 ↓	7 14 ↓	8 15 ↓	8 16 ↓	8 16 ↓	8 17 ↓	8 16 ↓	8 16 ↓
Houston Pilots L - Greens Bayou	8 17 ↑	8 17 ↑	8 18 ↑	8 17 ↑	8 16 ↑	7 14 ↗	6 13 →	6 10 ↘	5 9 ↓	5 9 ↓	5 9 ↓	5 9 ↓	5 10 ↓	6 10 ↓	6 12 ↓	6 13 ↓	6 14 ↓	7 14 ↓	7 15 ↓	8 16 ↓	8 16 ↓	8 17 ↓	8 16 ↓	8 16 ↓
Houston Pilots K - Shell Crude	8 17 ↑	8 17 ↑	8 18 ↑	8 17 ↑	8 16 ↑	7 14 ↗	6 13 →	6 10 ↘	5 9 ↓	5 9 ↓	5 9 ↓	3 9 ↓	5 9 ↓	5 10 ↓	6 12 ↓	6 13 ↓	6 13 ↓	7 14 ↓	7 15 ↓	8 16 ↓	8 16 ↓	8 16 ↓	8 16 ↓	8 16 ↓
Houston Pilots J - Lynchburg Ferries	8 17 ↑	8 17 ↑	8 17 ↑	8 17 ↑	8 16 ↑	7 14 ↗	6 13 →	5 10 ↘	5 9 ↓	3 9 ↓	3 8 ↓	3 8 ↓	3 9 ↓	5 9 ↓	5 10 ↓	6 12 ↓	6 13 ↓	6 14 ↓	7 15 ↓	7 16 ↓	8 16 ↓	8 16 ↓	8 16 ↓	8 16 ↓
Houston Pilots I - Exxon 3	9 17 ↑	9 17 ↑	9 18 ↑	10 17 ↑	9 16 ↑	9 15 ↑	8 13 ↑	8 12 ↑	7 12 ↘	7 10 ↓	6 10 ↓	6 9 ↓	7 10 ↓	7 10 ↓	8 12 ↓	8 13 ↓	9 14 ↓	10 14 ↓	10 15 ↓	10 16 ↓	10 16 ↓	10 16 ↓	10 16 ↓	9 16 ↓
Houston Pilots H - Morgans Point	9 17 ↑	9 17 ↑	9 18 ↑	10 17 ↑	9 16 ↑	9 15 ↑	8 13 ↑	8 12 ↑	7 12 ↘	6 10 ↓	6 9 ↓	6 9 ↓	6 9 ↓	7 10 ↓	7 10 ↓	8 12 ↓	8 13 ↓	9 14 ↓	9 15 ↓	10 16 ↓	10 16 ↓	10 16 ↓	10 15 ↓	9 16 ↓
Houston Pilots G - 75/76	10 18 ↑	10 18 ↑	10 20 ↑	10 18 ↑	10 17 ↑	10 16 ↑	9 14 ↑	8 13 ↑	8 12 ↑	8 10 ↘	7 10 ↓	7 9 ↓	7 9 ↓	8 10 ↓	8 12 ↓	8 13 ↓	9 14 ↓	10 15 ↓	10 16 ↓	10 16 ↓	10 17 ↓	10 16 ↓	10 16 ↓	10 16 ↓
Houston Pilots F - 63/64	10 18 ↑	10 18 ↑	10 18 ↑	10 18 ↑	10 17 ↑	10 16 ↑	9 14 ↑	8 13 ↑	8 12 ↑	8 10 ↘	7 10 ↓	7 9 ↓	7 9 ↓	7 10 ↓	8 12 ↓	8 13 ↓	9 13 ↓	10 14 ↓	10 15 ↓	10 16 ↓	10 16 ↓	10 17 ↓	10 16 ↓	10 16 ↓
Houston Pilots E - 51/52	10 18 ↑	10 18 ↑	10 18 ↑	10 18 ↑	10 17 ↑	10 16 ↑	9 14 ↑	8 13 ↑	8 12 ↑	8 10 ↘	7 10 ↓	6 9 ↓	6 9 ↓	7 9 ↓	7 10 ↓	8 12 ↓	8 13 ↓	9 13 ↓	10 15 ↓	10 15 ↓	10 16 ↓	10 16 ↓	10 16 ↓	10 16 ↓
Houston Pilots D - 37/38	10 18 ↑	10 18 ↑	10 20 ↑	10 18 ↑	10 17 ↑	10 16 ↑	9 14 ↑	8 13 ↑	8 12 ↑	8 10 ↘	7 10 ↓	6 9 ↓	6 9 ↓	6 9 ↓	7 10 ↓	8 12 ↓	8 13 ↓	9 13 ↓	10 15 ↓	10 15 ↓	10 16 ↓	10 16 ↓	10 16 ↓	10 16 ↓
Houston Pilots C - 25/26	12 20 ↑	12 18 ↑	10 20 ↑	10 18 ↑	10 17 ↑	10 16 ↑	9 14 ↑	8 13 ↑	8 13 ↑	8 12 ↑	7 10 ↘	6 9 ↓	6 9 ↓	6 9 ↓	7 10 ↓	8 12 ↓	8 13 ↓	8 13 ↓	9 15 ↓	10 15 ↓	10 16 ↓	10 16 ↓	10 16 ↓	10 16 ↓
Houston Pilots B - 11/12	12 18 ↑	12 18 ↑	12 18 ↑	10 18 ↑	10 16 ↑	9 16 ↑	8 14 ↑	8 14 ↑	8 13 ↑	7 12 ↑	6 10 ↘	6 10 ↓	6 9 ↓	6 9 ↓	6 10 ↓	7 12 ↓	8 12 ↓	8 13 ↓	9 14 ↓	9 15 ↓	10 16 ↓	10 16 ↓	10 16 ↓	10 16 ↓
Houston Pilots A - 1 & 2 Bravo	13 21 ↑	13 20 ↑	13 20 ↑	12 20 ↑	12 18 ↑	10 17 ↑	10 16 ↑	10 15 ↑	10 15 ↑	9 13 ↑	8 13 ↑	8 12 ↑	8 12 ↑	8 10 ↑	8 12 ↑	8 12 ↑	8 13 ↑	9 13 ↑	10 15 ↓	10 15 ↓	10 16 ↓	10 16 ↓	10 16 ↓	10 16 ↓

NOTE: This is automated data that may/may not agree with the official BAM thinking that's found on the daily slides. This data should be used as a guide only.

Houston Pilots: SUN. 1/26/2025



Forecast Discussion

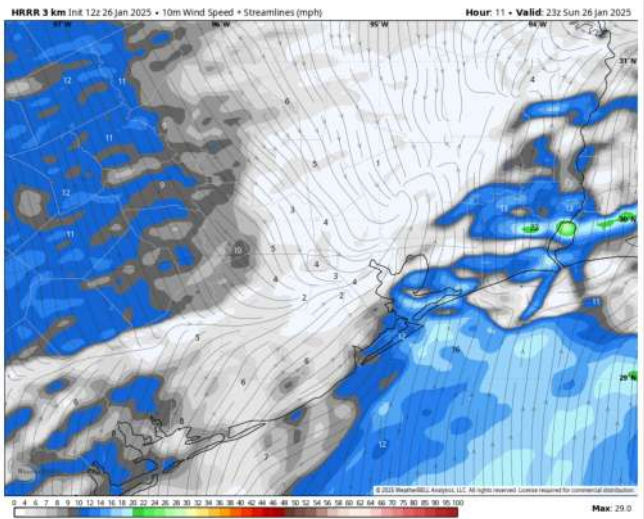
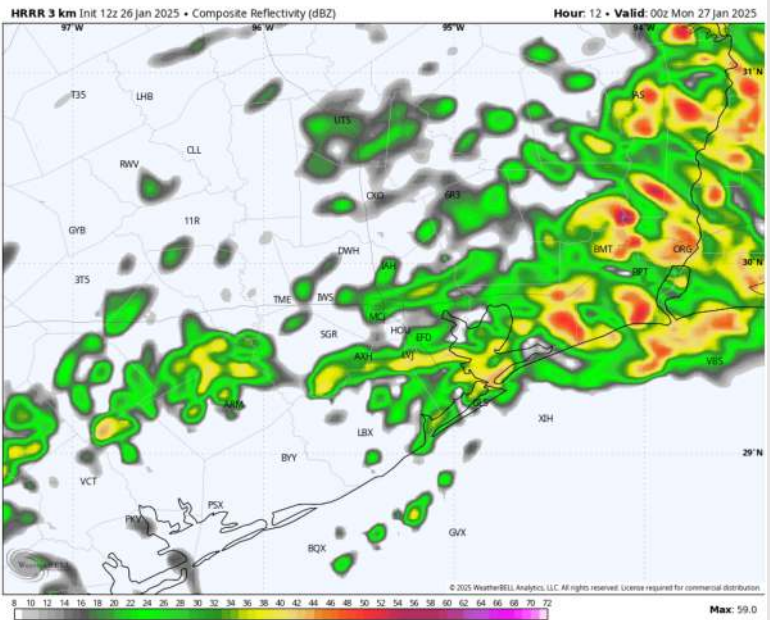
Precip: Widespread showers/storms work through all Stations through the rest of the day. **Isolated strong storms will have the potential for 25 – 35 kts wind gusts.**

Wind: Winds will be out of the SE throughout the day, becoming variable from 5-9 PM, then settling out of the N/NW. **N of Morgan's Point:** Winds will be at 3 – 8 kts through the rest of the day. **S of Morgan's Point:** Winds will be at 6 – 13 kts for the remainder of the day. **Non-thunderstorm wind gusts may reach 20 – 30 kts for Stations S. of Morgan's Point.**

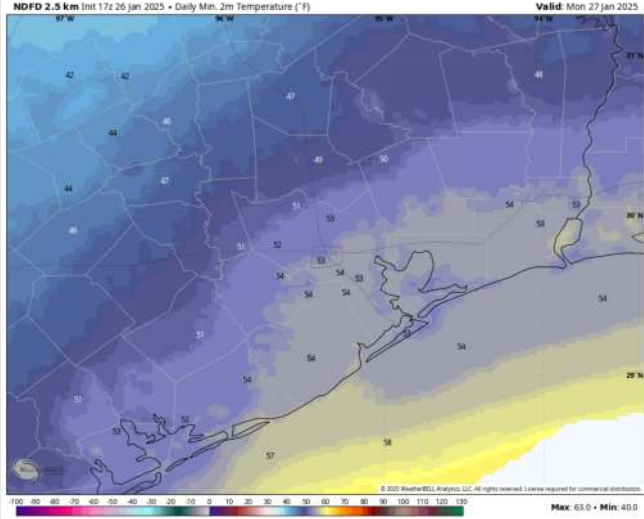
Low Temps: **N of Morgan's Point:** Lower 50s F. **S of Morgan's Point:** Low 50s F.

Visibility: Watching for sea-fog development alongside light rain showers this evening and into tomorrow morning.

Precip Image: 6 PM CT



Wind Speed
5 PM CT



Low Temps
MON AM

Houston Pilots: MON. 1/27/2025



Forecast Discussion

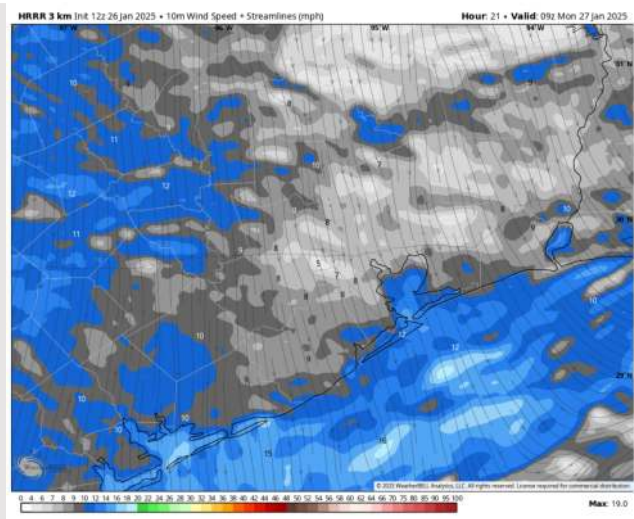
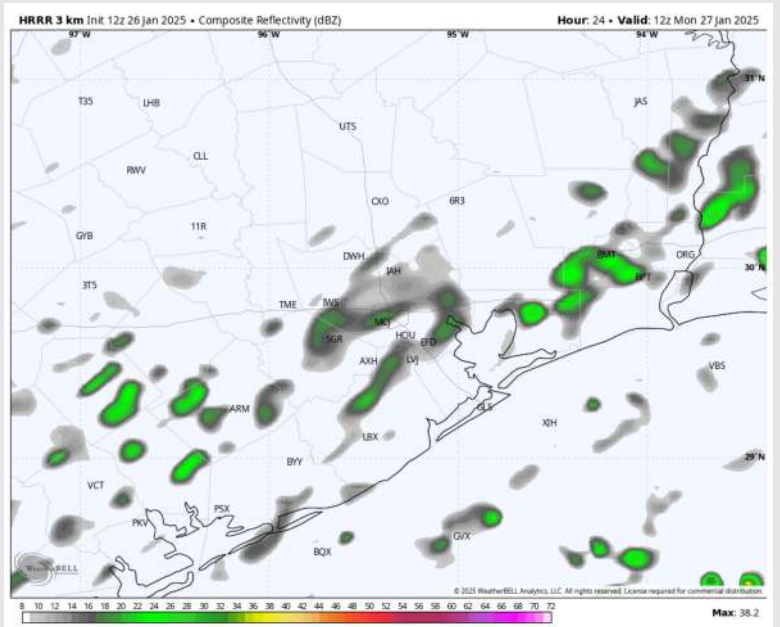
Precip: Scattered rain showers lingering past midnight will gradually taper off in coverage through 10 AM. Favoring conditions to dry out for the rest of the day after that time.

Wind: Winds will be out of the N/NE throughout the day. **N of Morgan's Point:** Winds will be at 3 – 8 kts throughout the day. **S of Morgan's Point:** Winds will be 7 – 13 kts throughout Monday.

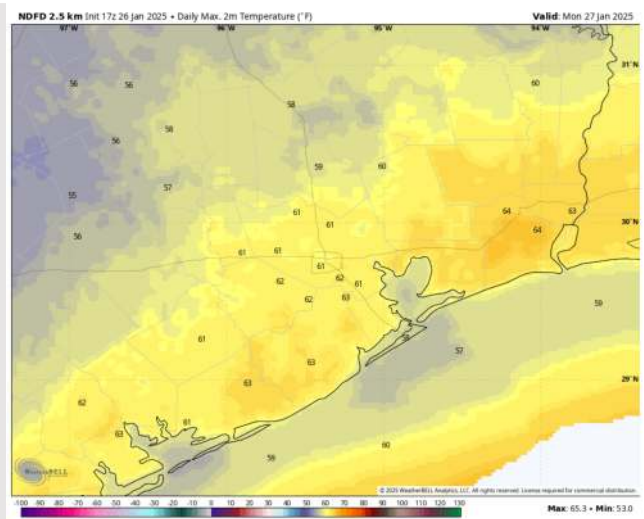
High Temps: **N of Morgan's Point:** Low 60s F. **S of Morgan's Point:** Upper 50s F.

Visibility: No fog concerns for this Monday, visibility can be reduced under heavy rainfall.

Precip Image: 6 AM CT



Wind Speed:
3 AM CT



High Temps
Monday

Houston Pilots: TUE. 1/28/2025



Forecast Discussion

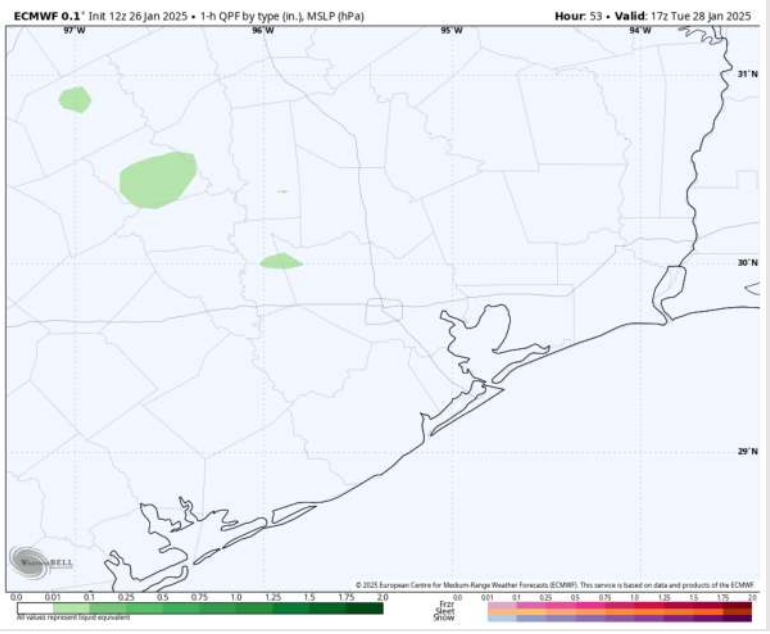
Precip: Favoring dry conditions throughout the day as rain chances are expected to stay to the W/NW of Stations.

Wind: Winds will be out of the N/NE through 4 PM, shifting clockwise out of the SE after that time. **N of Morgan's Point:** Winds will be at 3 – 8 kts throughout the day. **S of Morgan's Point:** Winds will be at 5 – 10 kts through Tuesday.

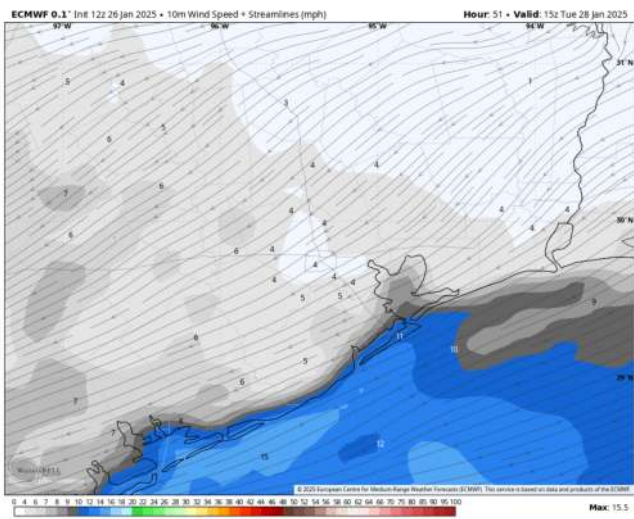
High Temps: **N of Morgan's Point:** Low to mid 60s F. **S of Morgan's Point:** Near 60 F.

Visibility: Watching for a risk of sea fog TUE PM.

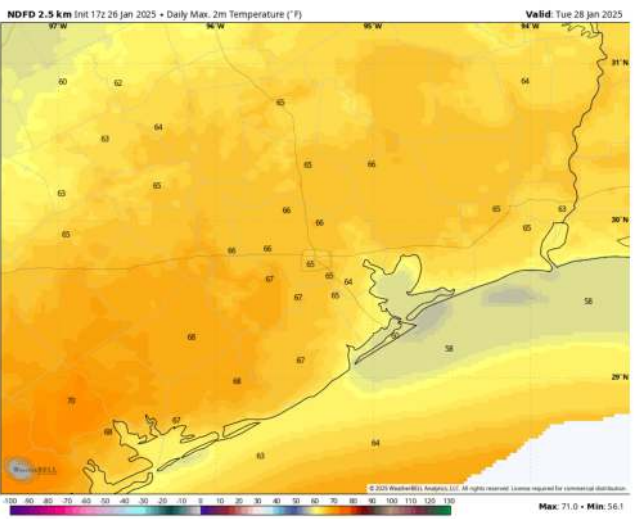
Precip Image: 11 AM CT



Wind Speed: 9 AM CT



High Temps Tuesday

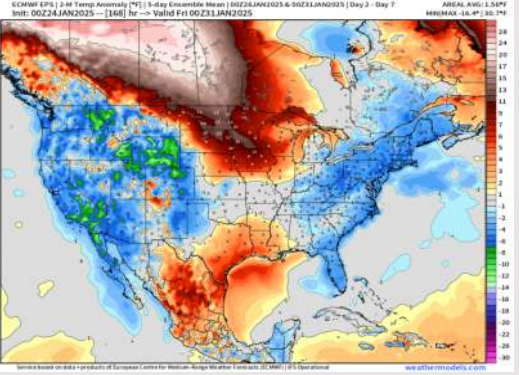


High Temps Tuesday

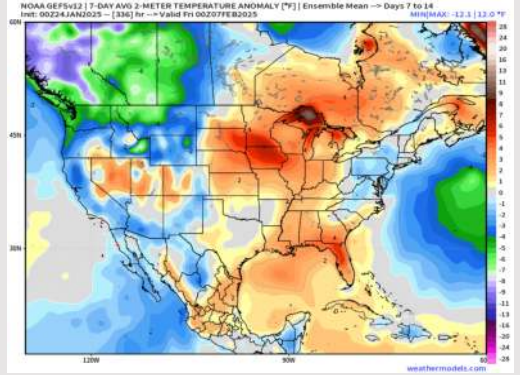
Houston Pilots: 1/26/25



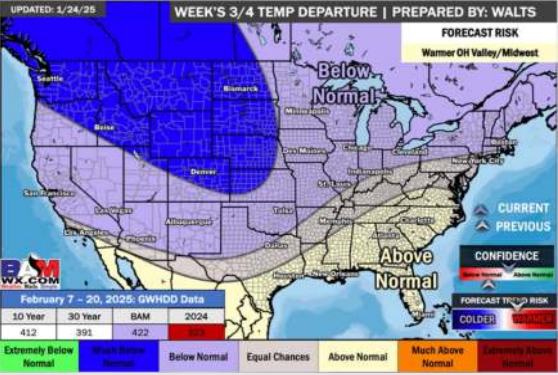
Next 7 Day Temperature Departure



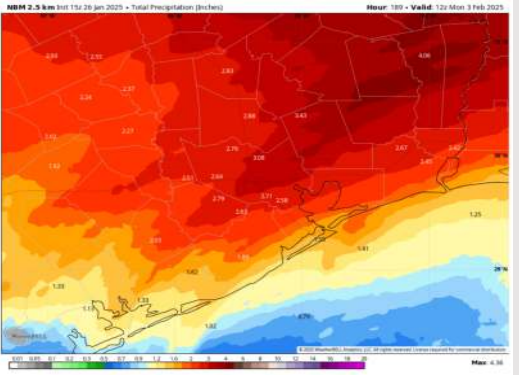
8-14 Day Temperature Departure



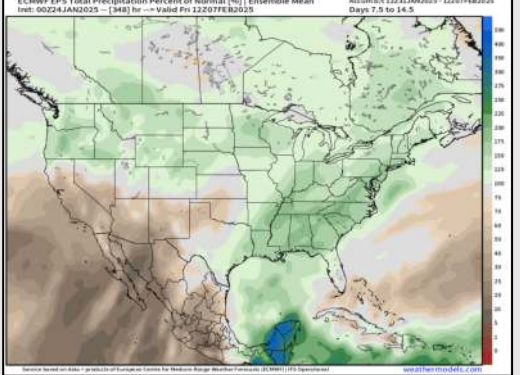
15-30 Day Temperature Departure



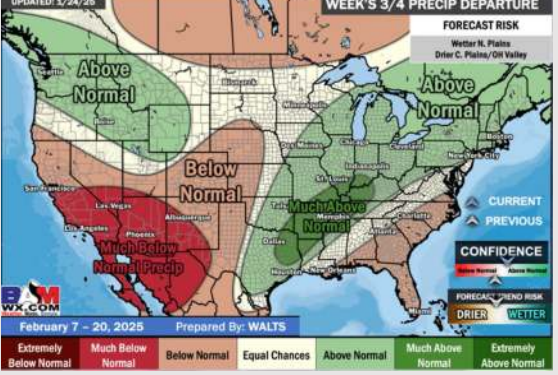
Next 7 Day Total Precipitation



8-14 Day % of Average Precip.



15-30 Day % of Average Precip.



- Temps are expected to be above normal for the week ahead. Favoring rain showers throughout the week.
- Above normal temp and above normal rainfall are expected for week 2.
- Above normal temperatures and above normal precipitation chances are expected for the weeks 3/4 timeframe.