

Houston Pilots Forecast Package



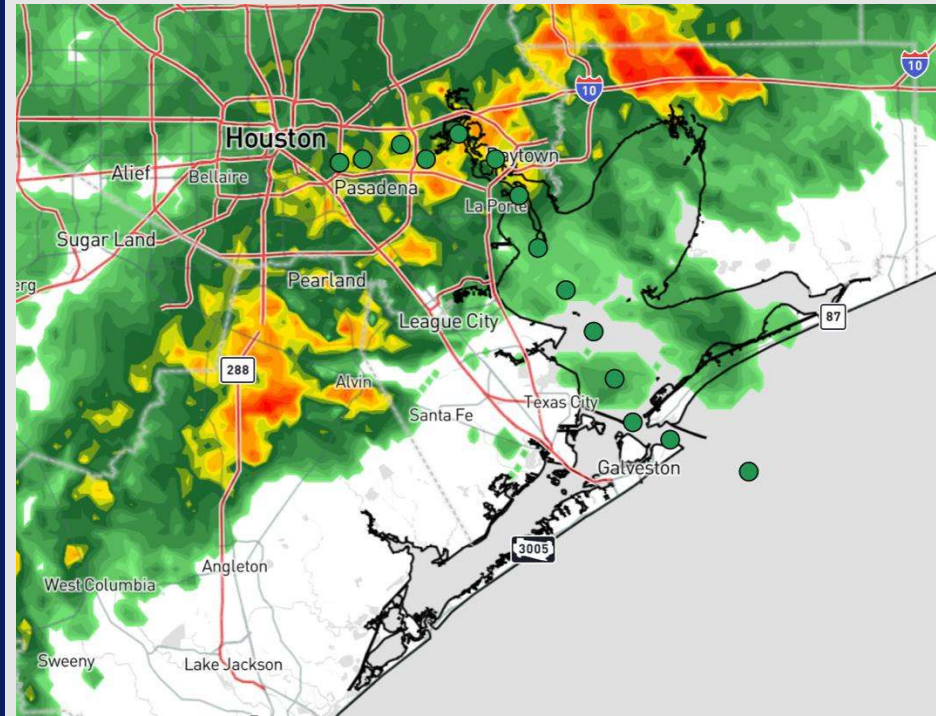
Updated: 12:35 PM CT

Sunday, January 26, 2025

Forecaster: Hope Kleitsch

Weather Headlines

- **Low-end risk for sea-fog possible this evening into MON AM. Check the visibility slide for more info.**
- **Wind gusts of 20-30 kts favored for Stations S. of Morgan's Point today.**
- **Rain chances continue through through MON AM.**



Current Radar: 12:35 PM CT

As always, please do not hesitate to reach out to us with any forecast questions at **(317)-560-8122**. Press **1** for forecast questions.

You can also access real-time forecast updates and 24/7 meteorological chat assistance on your [Clarity](#) app. Click [here](#) for login assistance.



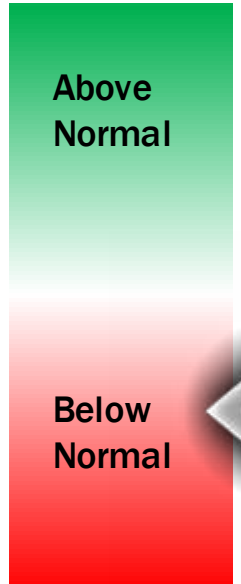
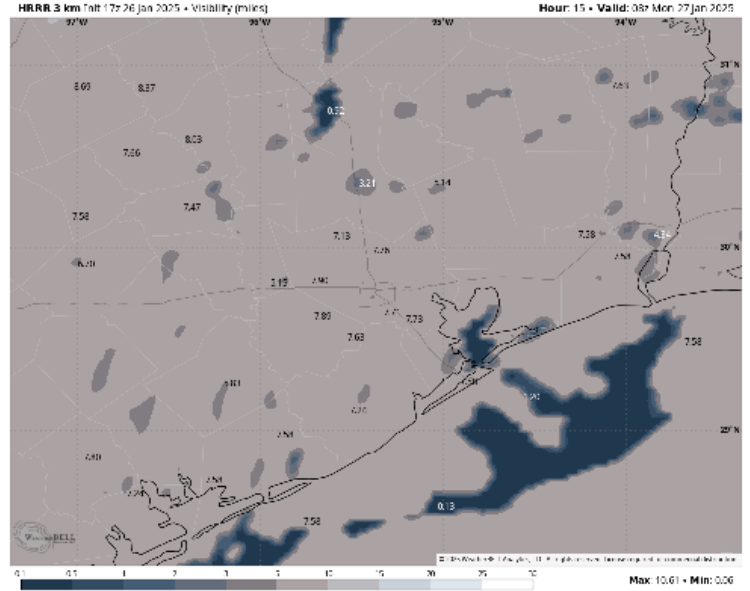
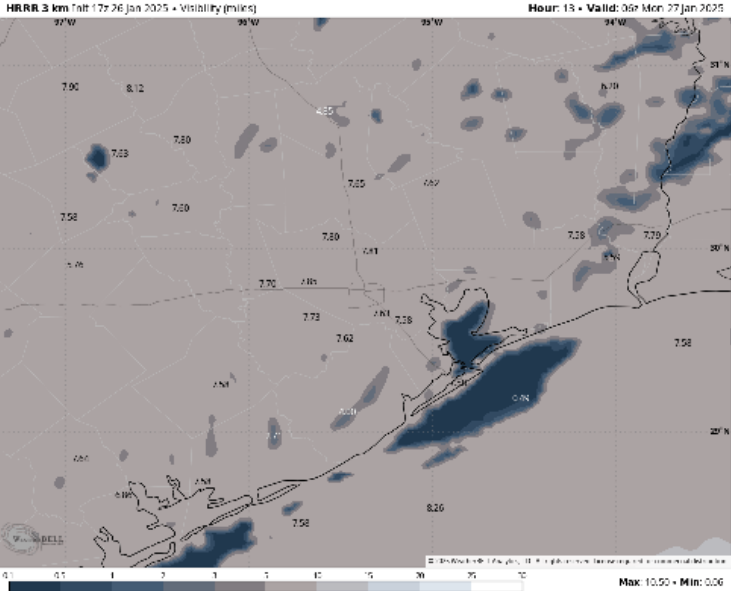
Houston Pilots Visibility Report



12 AM CST MON VISIBILITY

2 AM CST MON VISIBILITY

Confidence



TIMEFRAME DISCUSSED	THREAT
9 PM SUN – 5 AM MON	Low-End

- We continue to watch for potential fog development alongside scattered light showers/mist SUN PM into MON AM for Stations S of Morgan’s Point.
- With any fog that forms, visibilities can be reduced to <1.0 mile for Stations S. of Morgan’s Point. The greatest risk is favored to be between 10 PM SUN - 2 AM MON.
- Uncertainty lies in start time of fog formation.

Houston Pilots Extended Range Visibility Report



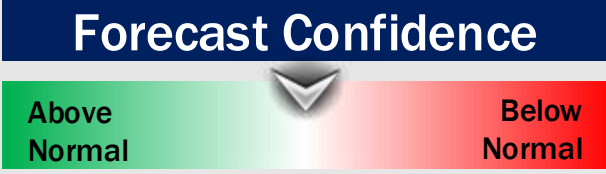
Wednesday 1/29/25

Monitoring a moderate risk for sea fog for stations S of Morgan's Point during WED AM and PM, before and after rain showers move through.



Thursday 1/30/25

Not favoring any fog risks for Thursday, however visibilities can be reduced under heavy showers.



Friday 1/31/25

Monitoring a low-end risk for sea fog FRI AM.



Chance for Fog

Wednesday AM	Moderate
Wednesday PM	Moderate
Thursday AM	Unlikely
Thursday PM	Unlikely
Friday AM	Low-End
Friday PM	Unlikely

Houston Pilots Visibility Chart (miles)



Forecast Confidence



Visibility	Sun 1 pm	Sun 2 pm	Sun 3 pm	Sun 4 pm	Sun 5 pm	Sun 6 pm	Sun 7 pm	Sun 8 pm	Sun 9 pm	Sun 10 pm	Sun 11 pm	Mon 12 am	Mon 1 am	Mon 2 am	Mon 3 am	Mon 4 am	Mon 5 am	Mon 6 am	Mon 7 am	Mon 8 am	Mon 9 am	Mon 10 am	Mon 11 am	Mon 12 pm
Houston Pilots N - 610 Bridge	2.5	2.5	2	2.5	2.5	1.6	4.9	4.9	4.9	4.9	4.9	3.9	3.9	3.9	3.9	3.9	3.9	3.9	3.9	2.9	2	2.9	4.9	5.9
Houston Pilots M - Kinder 1	2.5	2.5	2	2.5	2.5	2	4.9	4.9	4.9	4.9	4.9	3.9	3.9	3.9	3.9	3.9	3.9	3.9	3.9	2.9	2	2.9	4.9	5.9
Houston Pilots L - Greens Bayou	2.5	2.5	2	2.9	2.5	2	3.9	4.9	4.9	4.9	4.9	3.9	3.9	3.9	3.9	3.9	3.9	3.9	3.9	2.9	2	2.9	4.9	5.9
Houston Pilots K - Shell Crude	3.9	2.5	2.5	2.9	2.5	2	3.9	4.9	4.9	4.9	4.9	3.9	3.9	3.9	3.9	3.9	3.9	3.9	3.9	2.9	2	2.9	4.9	5.9
Houston Pilots J - Lynchburg Ferries	2.9	2.5	2.9	2.9	2.5	1.6	2.9	4.9	4.9	4.9	4.9	3.9	3.9	3.9	3.9	3.9	3.9	3.9	3.9	2.9	2	2.9	4.9	5.9
Houston Pilots I - Exxon 3	4.9	2.9	3.9	2.9	2.5	1.6	2.9	4.9	3.9	4.9	4.9	3.9	3.9	3.9	3.9	3.9	3.9	3.9	3.9	2.9	2	2.9	4.9	5.9
Houston Pilots H - Morgans Point	4.9	2.9	3.9	2.9	2.5	2	2.9	3.9	3.9	4.9	4.9	3.9	3.9	3.9	3.9	3.9	3.9	3.9	3.9	2.9	2	2.9	4.9	5.9
Houston Pilots G - 75/76	4.9	3.9	2.9	3.9	2.9	2.5	2.9	3.9	3.9	0.5	0.5	1.1	2	3.9	3.9	3.9	3.9	3.9	3.9	2.9	2	2.9	3.9	9
Houston Pilots F - 63/64	4.9	3.9	2.9	3.9	2.9	2.5	2.9	3.9	3.9	0.5	0.5	0.5	1.6	2.5	3.9	3.9	3.9	3.9	3.9	2.9	2	2.9	3.9	9
Houston Pilots E - 51/52	5.9	3.9	3.9	4.9	4.9	2.9	2.9	3.9	4.9	2.9	0.5	0.5	0.5	0.8	0.8	0.5	0.8	0.5	0.8	0.5	0.3	0.3	2	9
Houston Pilots D - 37/38	5.9	4.9	4.9	5.9	4.9	3.9	2.9	3.9	4.9	3.9	2.9	0.5	0.5	0.8	0.8	0.5	0.8	0.5	0.8	0.5	0.3	0.3	2	9
Houston Pilots C - 25/26	5.9	5.9	5.9	6.9	4.9	4.9	4.9	4.9	4.9	3.9	3.9	2.9	0.5	1.1	1.1	1.1	1.1	1.1	1.1	0.8	0.3	0.8	2	8
Houston Pilots B - 11/12	5.9	5.9	5.9	6.9	6.9	6.9	5.9	4.9	4.9	3.9	3.9	2.9	0.5	1.1	2.5	2.5	2	2	2	1.1	0.3	0.8	2.5	8
Houston Pilots A - 1 & 2 Bravo	6.9	6.9	6.9	6.9	6.9	6.9	6.9	5.9	4.9	4.9	3.9	2.9	0.5	0.8	1.1	1.1	1.1	1.1	1.1	0.8	0.3	0.8	2	8

NOTE: This is automated data that may/may not agree with the official BAM thinking that's found on the daily slides or special visibility report slides. This data should be used as a guide only

Houston Pilots Wind Chart



Forecast Confidence



Sustained wind 10 Knots
Gusts 15 Knots
Wind from the SE

Example



Wind	Sun 1 pm	Sun 2 pm	Sun 3 pm	Sun 4 pm	Sun 5 pm	Sun 6 pm	Sun 7 pm	Sun 8 pm	Sun 9 pm	Sun 10 pm	Sun 11 pm	Mon 12 am	Mon 1 am	Mon 2 am	Mon 3 am	Mon 4 am	Mon 5 am	Mon 6 am	Mon 7 am	Mon 8 am	Mon 9 am	Mon 10 am	Mon 11 am	Mon 12 pm
Houston Pilots N - 610 Bridge	8 17 ↑	8 17 ↑	8 17 ↑	8 17 ↑	7 15 ↑	6 14 ↗	6 13 →	5 10 ↘	5 9 ↓	3 9 ↓	5 9 ↓	5 9 ↓	5 10 ↓	6 10 ↓	6 12 ↓	6 13 ↓	6 14 ↓	7 14 ↓	8 15 ↓	8 16 ↓	8 16 ↓	8 17 ↓	8 16 ↓	8 16 ↓
Houston Pilots M - Kinder 1	8 17 ↑	8 17 ↑	8 18 ↑	8 17 ↑	7 16 ↑	7 14 ↗	6 13 →	5 10 ↘	5 9 ↓	3 9 ↓	3 9 ↓	5 9 ↓	5 10 ↓	6 10 ↓	6 12 ↓	6 13 ↓	6 14 ↓	7 14 ↓	8 15 ↓	8 16 ↓	8 16 ↓	8 17 ↓	8 16 ↓	8 16 ↓
Houston Pilots L - Greens Bayou	8 17 ↑	8 17 ↑	8 18 ↑	8 17 ↑	8 16 ↑	7 14 ↗	6 13 →	6 10 ↘	5 9 ↓	5 9 ↓	5 9 ↓	5 9 ↓	5 10 ↓	6 12 ↓	6 13 ↓	6 14 ↓	6 14 ↓	7 15 ↓	8 16 ↓	8 16 ↓	8 17 ↓	8 16 ↓	8 16 ↓	8 16 ↓
Houston Pilots K - Shell Crude	8 17 ↑	8 17 ↑	8 18 ↑	8 17 ↑	8 16 ↑	7 14 ↗	6 13 →	6 10 ↘	5 9 ↓	5 9 ↓	5 9 ↓	3 9 ↓	5 9 ↓	5 10 ↓	6 12 ↓	6 13 ↓	6 13 ↓	7 14 ↓	7 15 ↓	8 16 ↓	8 16 ↓	8 16 ↓	8 16 ↓	8 16 ↓
Houston Pilots J - Lynchburg Ferries	8 17 ↑	8 17 ↑	8 17 ↑	8 17 ↑	8 16 ↑	7 14 ↗	6 13 →	5 10 ↘	5 9 ↓	3 9 ↓	3 8 ↓	3 8 ↓	3 9 ↓	5 9 ↓	5 10 ↓	6 12 ↓	6 13 ↓	6 14 ↓	7 15 ↓	7 16 ↓	8 16 ↓	8 16 ↓	8 16 ↓	8 16 ↓
Houston Pilots I - Exxon 3	9 17 ↑	9 17 ↑	9 18 ↑	10 17 ↑	9 16 ↑	9 15 ↑	8 13 ↑	8 12 ↑	7 12 ↑	7 10 ↘	6 10 ↓	6 9 ↓	7 10 ↓	7 10 ↓	8 12 ↓	8 13 ↓	9 14 ↓	10 14 ↓	10 15 ↓	10 16 ↓	10 16 ↓	10 16 ↓	10 16 ↓	9 16 ↓
Houston Pilots H - Morgans Point	9 17 ↑	9 17 ↑	9 18 ↑	10 17 ↑	9 16 ↑	9 15 ↑	8 13 ↑	8 12 ↑	7 12 ↑	6 10 ↘	6 9 ↓	6 9 ↓	6 9 ↓	7 10 ↓	7 10 ↓	8 12 ↓	8 13 ↓	9 14 ↓	9 15 ↓	10 16 ↓	10 16 ↓	10 16 ↓	10 15 ↓	9 16 ↓
Houston Pilots G - 75/76	10 18 ↑	10 18 ↑	10 20 ↑	10 18 ↑	10 17 ↑	10 16 ↑	9 14 ↑	8 13 ↑	8 12 ↑	8 10 ↘	7 10 ↓	7 9 ↓	7 9 ↓	8 10 ↓	8 12 ↓	8 13 ↓	9 14 ↓	10 14 ↓	10 15 ↓	10 16 ↓	10 16 ↓	10 17 ↓	10 16 ↓	10 16 ↓
Houston Pilots F - 63/64	10 18 ↑	10 18 ↑	10 18 ↑	10 18 ↑	10 17 ↑	10 16 ↑	9 14 ↑	8 13 ↑	8 12 ↑	8 10 ↘	7 10 ↓	7 9 ↓	7 9 ↓	7 10 ↓	8 12 ↓	8 13 ↓	9 13 ↓	10 14 ↓	10 15 ↓	10 16 ↓	10 16 ↓	10 17 ↓	10 16 ↓	10 16 ↓
Houston Pilots E - 51/52	10 18 ↑	10 18 ↑	10 18 ↑	10 18 ↑	10 17 ↑	10 16 ↑	9 14 ↑	8 13 ↑	8 12 ↑	8 10 ↘	7 10 ↓	6 9 ↓	6 9 ↓	7 9 ↓	7 10 ↓	8 12 ↓	8 13 ↓	9 13 ↓	10 15 ↓	10 15 ↓	10 16 ↓	10 16 ↓	10 16 ↓	10 16 ↓
Houston Pilots D - 37/38	10 18 ↑	10 18 ↑	10 20 ↑	10 18 ↑	10 17 ↑	10 16 ↑	9 14 ↑	8 13 ↑	8 12 ↑	8 10 ↘	7 10 ↓	6 9 ↓	6 9 ↓	6 9 ↓	7 10 ↓	8 12 ↓	8 13 ↓	9 13 ↓	10 15 ↓	10 15 ↓	10 16 ↓	10 16 ↓	10 16 ↓	10 16 ↓
Houston Pilots C - 25/26	12 20 ↑	12 18 ↑	10 20 ↑	10 18 ↑	10 17 ↑	10 16 ↑	9 14 ↑	8 13 ↑	8 13 ↑	8 12 ↑	7 10 ↘	6 9 ↓	6 9 ↓	6 9 ↓	7 10 ↓	8 12 ↓	8 13 ↓	8 13 ↓	9 15 ↓	10 15 ↓	10 16 ↓	10 16 ↓	10 16 ↓	10 16 ↓
Houston Pilots B - 11/12	12 18 ↑	12 18 ↑	12 18 ↑	10 18 ↑	10 16 ↑	9 16 ↑	8 14 ↑	8 14 ↑	8 13 ↑	7 10 ↘	6 10 ↓	6 10 ↓	6 9 ↓	6 9 ↓	6 10 ↓	7 12 ↓	8 12 ↓	8 13 ↓	9 14 ↓	9 15 ↓	10 16 ↓	10 16 ↓	10 16 ↓	10 16 ↓
Houston Pilots A - 1 & 2 Bravo	13 21 ↑	13 20 ↑	13 20 ↑	12 20 ↑	12 18 ↑	10 17 ↑	10 16 ↑	10 15 ↑	10 15 ↑	9 13 ↑	8 13 ↑	8 12 ↑	8 12 ↑	8 10 ↑	8 12 ↑	8 12 ↑	8 13 ↑	9 14 ↑	10 15 ↑	10 15 ↑	10 16 ↑	10 16 ↑	10 16 ↑	10 16 ↑

NOTE: This is automated data that may/may not agree with the official BAM thinking that's found on the daily slides. This data should be used as a guide only.

Houston Pilots: SUN. 1/26/2025



Forecast Discussion

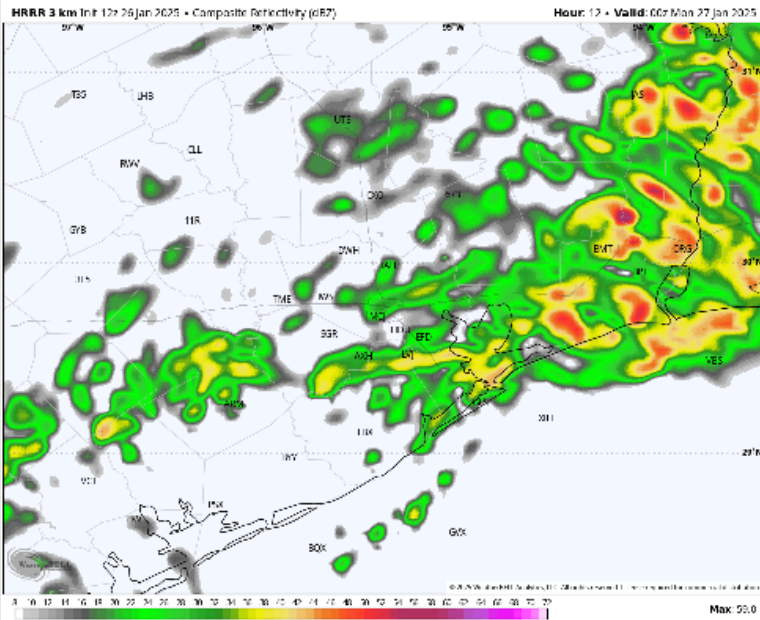
Precip: Widespread showers/storms work through all Stations through the rest of the day. **Isolated strong storms will have the potential for 25 – 35 kts wind gusts.**

Wind: Winds will be out of the SE throughout the day, becoming variable from 5-9 PM, then settling out of the N/NW. **N of Morgan's Point:** Winds will be at 3 – 8 kts through the rest of the day. **S of Morgan's Point:** Winds will be at 6 – 13 kts for the remainder of the day. **Non-thunderstorm wind gusts may reach 20 – 30 kts for Stations S. of Morgan's Point.**

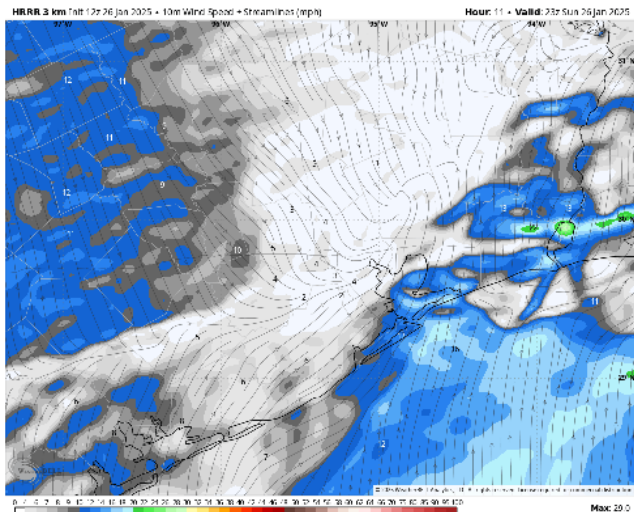
Low Temps: **N of Morgan's Point:** Lower 50s F. **S of Morgan's Point:** Low 50s F.

Visibility: Watching for sea-fog development alongside light rain showers this evening and into tomorrow morning.

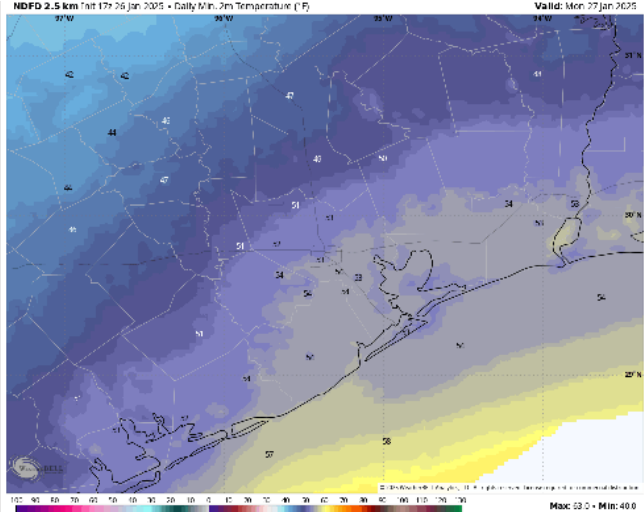
Precip Image: 6 PM CT



Wind Speed
5 PM CT



Low Temps
MON AM



Forecast Discussion

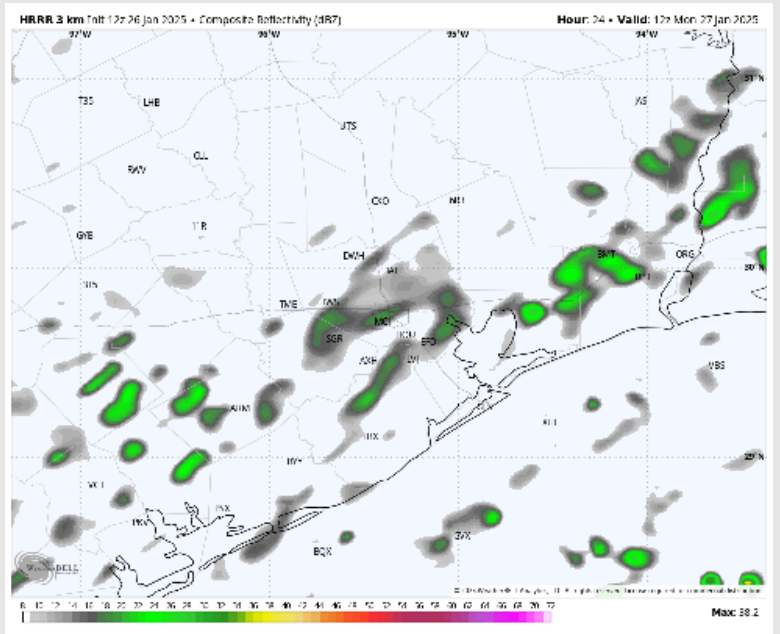
Precip: Scattered rain showers lingering past midnight will gradually taper off in coverage through 10 AM. Favoring conditions to dry out for the rest of the day after that time.

Wind: Winds will be out of the N/NE throughout the day. **N of Morgan's Point:** Winds will be at 3 – 8 kts throughout the day. **S of Morgan's Point:** Winds will be 7 – 13 kts throughout Monday.

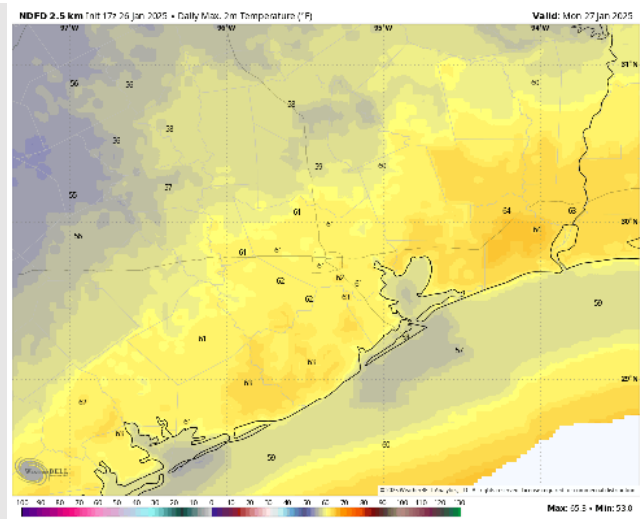
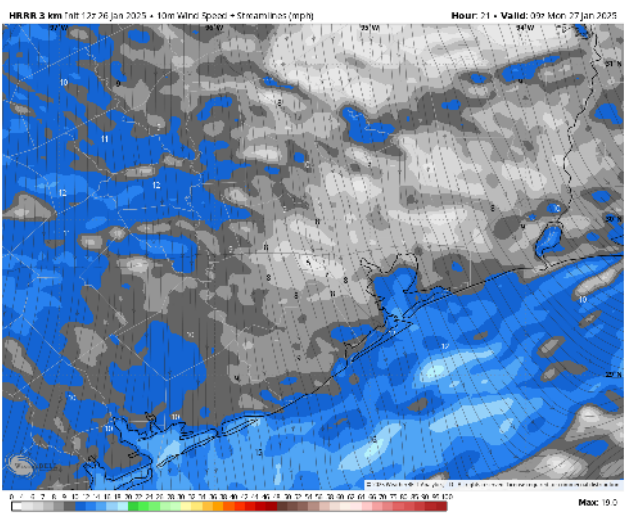
High Temps: **N of Morgan's Point:** Low 60s F. **S of Morgan's Point:** Upper 50s F.

Visibility: No fog concerns for this Monday, visibility can be reduced under heavy rainfall.

Precip Image: 6 AM CT



Wind Speed: 3 AM CT



High Temps Monday

Houston Pilots: TUE. 1/28/2025



Forecast Discussion

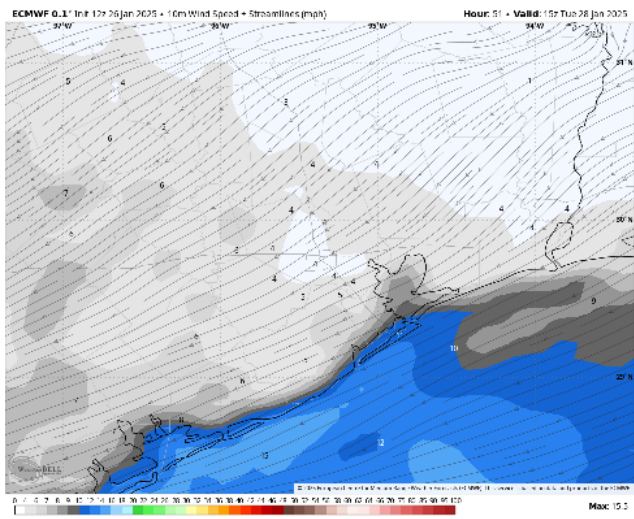
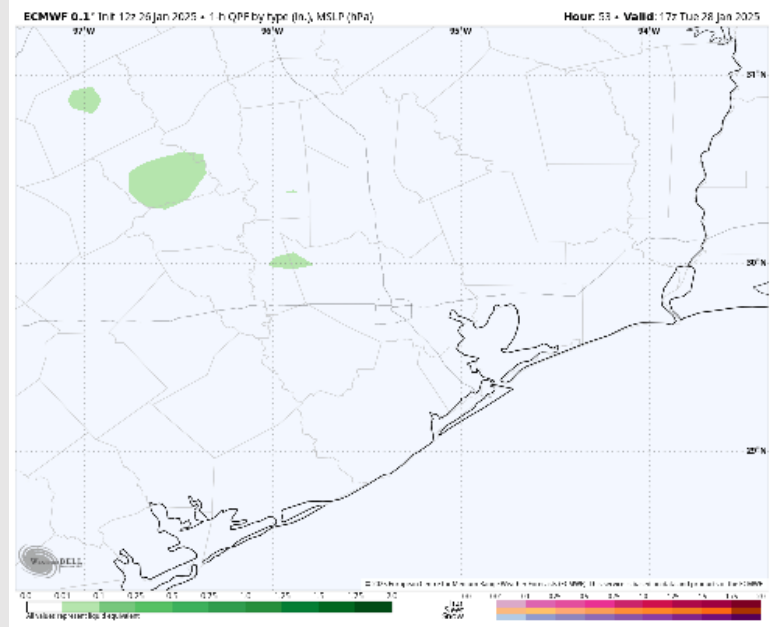
Precip: Favoring dry conditions throughout the day as rain chances are expected to stay to the W/NW of Stations.

Wind: Winds will be out of the N/NE through 4 PM, shifting clockwise out of the SE after that time. **N of Morgan's Point:** Winds will be at 3 – 8 kts throughout the day. **S of Morgan's Point:** Winds will be at 5 – 10 kts through Tuesday.

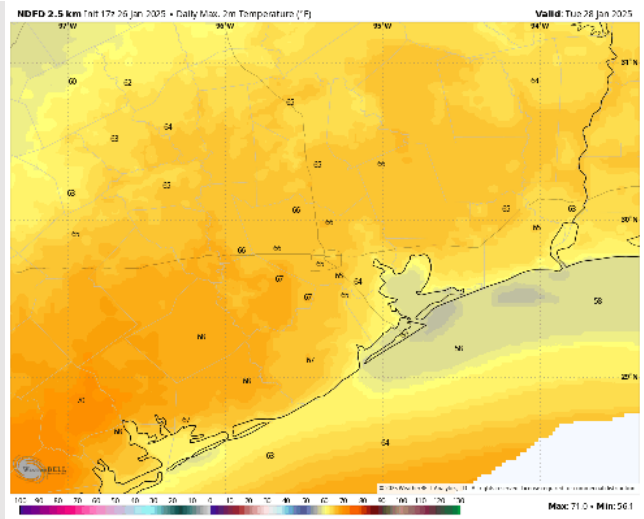
High Temps: **N of Morgan's Point:** Low to mid 60s F. **S of Morgan's Point:** Near 60 F.

Visibility: Watching for a risk of sea fog TUE PM.

Precip Image: 11 AM CT

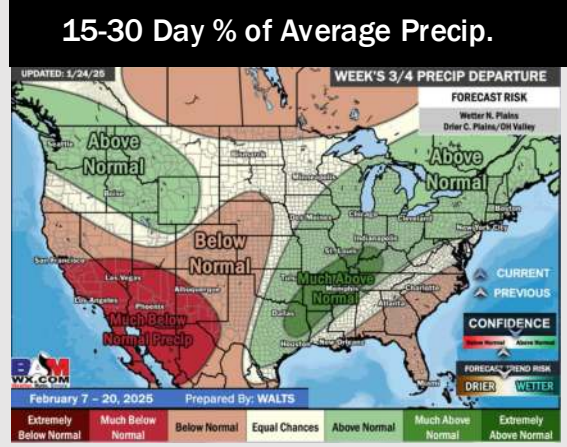
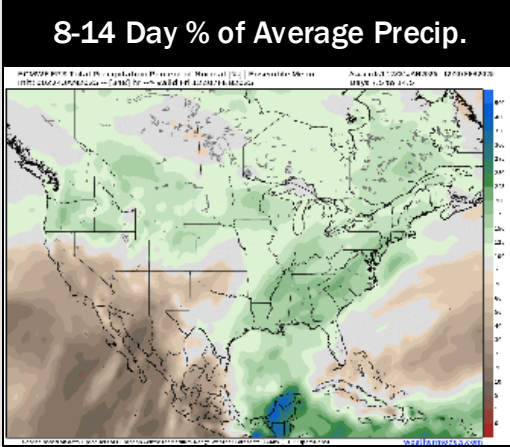
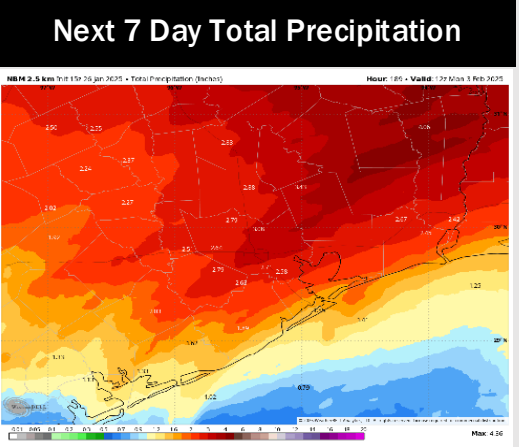
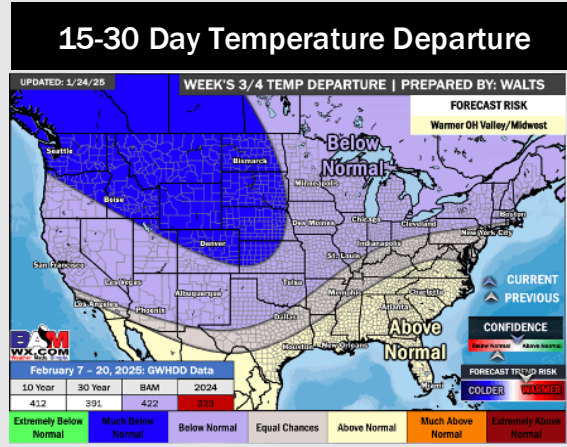
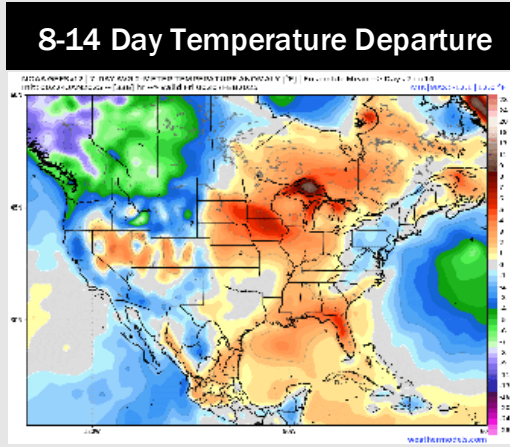
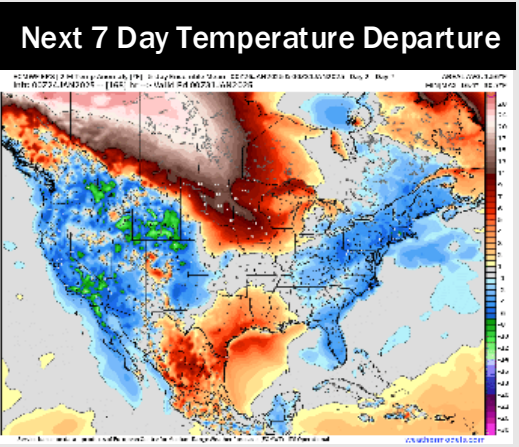


Wind Speed:
9 AM CT



High Temps
Tuesday

Houston Pilots: 1/26/25



- Temps are expected to be above normal for the week ahead. Favoring rain showers throughout the week.
- Above normal temp and above normal rainfall are expected for week 2.
- Above normal temperatures and above normal precipitation chances are expected for the weeks 3/4 timeframe.