

Houston Pilots Forecast Package



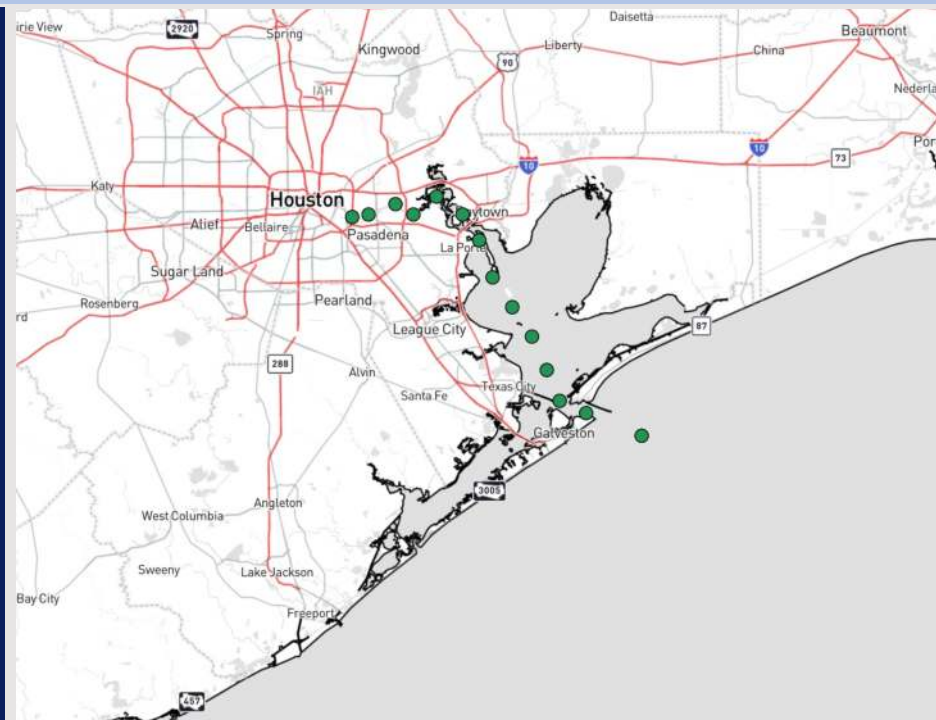
Updated: 12:00 AM CT

Saturday, January 25, 2025

Forecaster: Xander Lowry

Weather Headlines

- **Low-end risk for sea-fog return Sunday morning. Check the visibility slide for more info.**
- **Wind gusts up to 25 kts favored for Stations S. of Morgan's Point this weekend.**
- **Rain chances work back into the area SAT PM continuing into SUN.**



Current Radar: 11:55 PM CT

As always, please do not hesitate to reach out to us with any forecast questions at **(317)-560-8122**. Press **1** for forecast questions.

You can also access real-time forecast updates and 24/7 meteorological chat assistance on your [Clarity](#) app. Click [here](#) for login assistance.

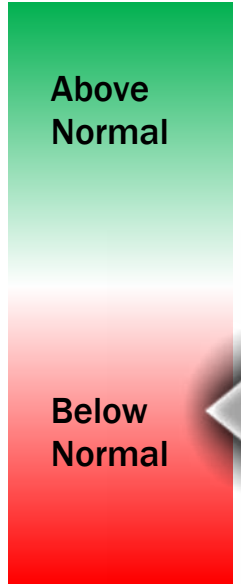
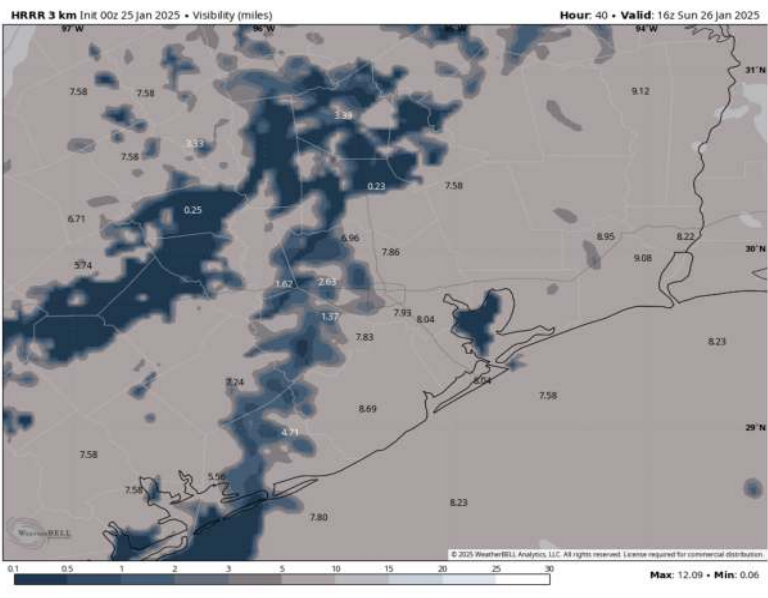
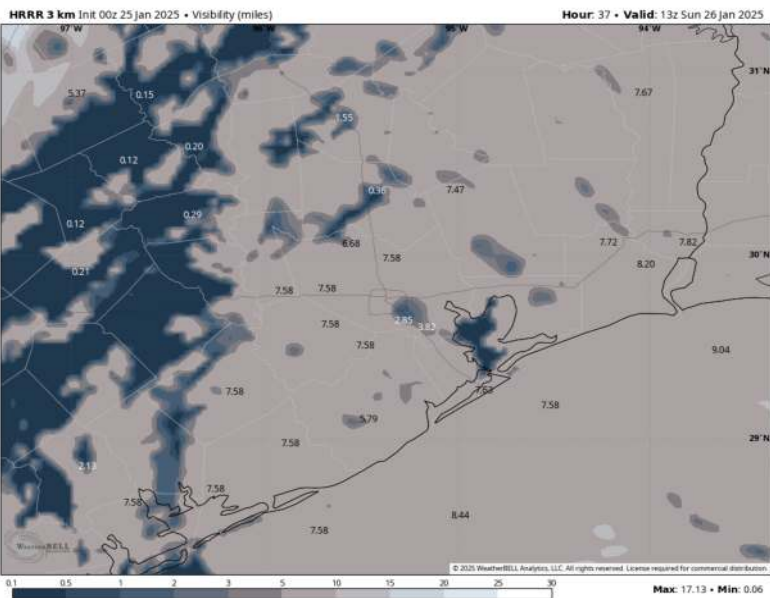


Houston Pilots Visibility Report



7 AM CST SUN VISIBILITY 10 AM CST SUN VISIBILITY

Confidence



TIMEFRAME DISCUSSED	THREAT
4 AM - 11 AM SUN	Low

- We continue to watch for potential fog development alongside scattered light showers/mist SUN AM for stations S of Morgan's Point.
- With fog that forms, visibilities can be reduced to <1.0 mile for stations S. of Morgan's Point. The greatest risk is favored to be between 5 AM - 10 AM SUN.
- For any fog that forms, favoring it to clear by 11 AM SUN with the passage of a cold front.

Houston Pilots Extended Range Visibility Report



Tuesday 1/28/25

Low-end risk of sea fog for stations S of Morgan's Point TUE AM, with an increased risk later in the PM.



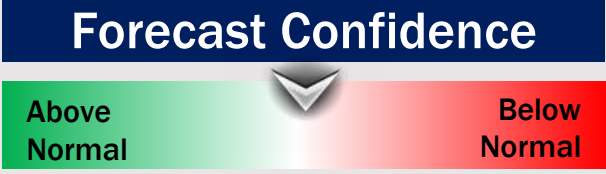
Thursday 1/30/25

Not favoring any fog risks for Thursday.



Wednesday 1/29/25

Monitoring a moderate risk for sea fog for stations S of Morgan's Point during WED AM, with a lower-end threat during the PM



Chance for Fog

Tuesday AM	Low
Tuesday PM	Moderate
Wednesday AM	Moderate
Wednesday PM	Low
Thursday AM	Unlikely
Thursday PM	Unlikely

Houston Pilots Visibility Chart (miles)



Forecast Confidence



Visibility	Sat 1 am	Sat 2 am	Sat 3 am	Sat 4 am	Sat 5 am	Sat 6 am	Sat 7 am	Sat 8 am	Sat 9 am	Sat 10 am	Sat 11 am	Sat 12 pm	Sat 1 pm	Sat 2 pm	Sat 3 pm	Sat 4 pm	Sat 5 pm	Sat 6 pm	Sat 7 pm	Sat 8 pm	Sat 9 pm	Sat 10 pm	Sat 11 pm	Sun 12 am
Houston Pilots N - 610 Bridge	10	10	10	10	10	10	10	10	10	10	10	10	10	10	10	10	10	10	10	10	9	6.9	6.9	5.9
Houston Pilots M - Kinder 1	10	10	10	10	10	10	10	10	10	10	10	10	10	10	10	10	10	10	10	10	9	7.9	6.9	5.9
Houston Pilots L - Greens Bayou	10	10	10	10	10	10	10	10	10	10	10	10	10	10	10	10	10	10	10	10	10	7.9	6.9	5.9
Houston Pilots K - Shell Crude	10	10	10	10	10	10	10	10	10	10	10	10	10	10	10	10	10	10	10	10	10	7.9	6.9	5.9
Houston Pilots J - Lynchburg Ferries	10	10	10	10	10	10	10	10	10	10	10	10	10	10	10	10	10	10	10	10	10	7.9	6.9	5.9
Houston Pilots I - Exxon 3	10	10	10	10	10	10	10	10	10	10	10	10	10	10	10	10	10	10	10	10	10	7.9	6.9	5.9
Houston Pilots H - Morgans Point	10	10	10	10	10	10	10	10	10	10	10	10	10	10	10	10	10	10	10	10	10	7.9	6.9	6.9
Houston Pilots G - 75/76	10	10	10	10	10	10	10	10	10	10	10	10	10	10	10	10	10	10	10	10	10	10	9	9
Houston Pilots F - 63/64	10	10	10	10	10	10	10	10	10	10	10	10	10	10	10	10	10	10	10	10	10	10	9	9
Houston Pilots E - 51/52	10	10	10	10	10	10	10	10	10	10	10	10	10	10	10	10	10	10	10	10	10	10	9	9
Houston Pilots D - 37/38	10	10	10	10	10	10	10	10	10	10	10	10	10	10	10	10	10	10	10	10	10	10	9	9
Houston Pilots C - 25/26	10	10	10	10	10	10	10	10	10	10	10	10	10	10	10	10	10	10	10	10	10	7.9	9	9
Houston Pilots B - 11/12	10	10	10	10	10	10	10	10	10	10	10	10	10	10	10	10	10	10	10	10	9	7.9	9	9
Houston Pilots A - 1 & 2 Bravo	10	10	10	10	10	10	10	10	10	10	10	10	10	10	10	10	10	10	10	10	10	10	9	9

NOTE: This is automated data that may/may not agree with the official BAM thinking that's found on the daily slides or special visibility report slides. This data should be used as a guide only

Houston Pilots Wind Chart



Sustained wind 10 Knots

Gusts 15 Knots

Wind from the SE

Example

10

15

↙

Wind	Sat 1 am	Sat 2 am	Sat 3 am	Sat 4 am	Sat 5 am	Sat 6 am	Sat 7 am	Sat 8 am	Sat 9 am	Sat 10 am	Sat 11 am	Sat 12 pm	Sat 1 pm	Sat 2 pm	Sat 3 pm	Sat 4 pm	Sat 5 pm	Sat 6 pm	Sat 7 pm	Sat 8 pm	Sat 9 pm	Sat 10 pm	Sat 11 pm	Sun 12 am	
Houston Pilots N - 610 Bridge	5 12 ↗	5 10 ↗	5 10 ↗	5 10 ↗	5 10 ↗	5 10 ↗	5 10 ↗	6 13 ↗	6 13 ↗	7 15 ↗	8 17 ↗	9 20 ↗	10 22 ↗	10 22 ↗	10 23 ↗	10 22 ↗	10 23 ↗	10 22 ↗	10 21 ↗	9 20 ↗	9 20 ↗	8 18 ↗	8 17 ↗	8 16 ↗	
Houston Pilots M - Kinder 1	5 12 ↗	5 10 ↗	5 10 ↗	5 10 ↗	5 10 ↗	5 10 ↗	5 12 ↗	6 13 ↗	6 13 ↗	7 15 ↗	8 18 ↗	10 20 ↗	10 22 ↗	10 22 ↗	10 23 ↗	10 23 ↗	10 23 ↗	10 22 ↗	10 21 ↗	9 20 ↗	9 20 ↗	8 18 ↗	8 17 ↗	8 16 ↗	
Houston Pilots L - Greens Bayou	6 12 ↗	5 10 ↗	5 12 ↗	5 10 ↗	5 12 ↗	5 12 ↗	6 12 ↗	6 13 ↗	6 14 ↗	7 16 ↗	8 18 ↗	10 20 ↗	10 22 ↗	12 23 ↗	12 23 ↗	12 23 ↗	12 23 ↗	10 22 ↗	10 21 ↗	10 21 ↗	9 20 ↗	9 18 ↗	8 17 ↗	8 16 ↗	
Houston Pilots K - Shell Crude	6 12 ↗	5 12 ↗	5 12 ↗	5 12 ↗	5 12 ↗	5 12 ↗	6 12 ↗	6 13 ↗	6 14 ↗	8 16 ↗	9 18 ↗	10 20 ↗	10 22 ↗	12 22 ↗	12 23 ↗	12 23 ↗	12 23 ↗	10 22 ↗	10 21 ↗	10 21 ↗	9 20 ↗	9 18 ↗	8 17 ↗	8 16 ↗	
Houston Pilots J - Lynchburg Ferries	5 12 ↗	5 10 ↗	5 12 ↗	5 12 ↗	5 12 ↗	5 12 ↗	6 12 ↗	6 13 ↗	6 14 ↗	8 16 ↗	9 18 ↗	10 20 ↗	12 22 ↗	12 23 ↗	12 23 ↗	12 23 ↗	12 24 ↗	10 22 ↗	10 21 ↗	10 21 ↗	9 20 ↗	8 18 ↗	8 17 ↗	8 16 ↗	
Houston Pilots I - Exxon 3	8 13 ↗	8 13 ↗	8 14 ↗	8 14 ↗	8 14 ↗	8 14 ↗	8 14 ↗	9 15 ↗	10 15 ↗	10 17 ↗	12 20 ↗	13 21 ↗	13 22 ↗	13 23 ↗	13 23 ↗	14 23 ↗	14 23 ↗	14 22 ↗	14 22 ↗	13 21 ↗	13 21 ↗	13 20 ↗	13 18 ↗	12 17 ↗	
Houston Pilots H - Morgans Point	8 14 ↗	8 14 ↗	8 14 ↗	8 14 ↗	8 14 ↗	8 14 ↗	8 14 ↗	9 15 ↗	10 16 ↗	10 17 ↗	12 20 ↗	13 21 ↗	13 22 ↗	13 23 ↗	13 23 ↗	13 23 ↗	14 23 ↗	14 22 ↗	13 22 ↗	13 21 ↗	13 21 ↗	13 20 ↗	13 18 ↗	12 17 ↗	
Houston Pilots G - 75/76	10 16 ↗	10 16 ↗	10 15 ↗	10 16 ↗	10 15 ↗	10 15 ↗	10 15 ↗	10 16 ↗	12 18 ↗	12 18 ↗	13 20 ↗	13 22 ↗	13 22 ↗	13 23 ↗	14 23 ↗	14 23 ↗	14 24 ↗	15 23 ↗	15 23 ↗	15 22 ↗	15 22 ↗	15 21 ↗	14 20 ↗	13 20 ↗	
Houston Pilots F - 63/64	10 16 ↗	10 16 ↗	10 16 ↗	10 17 ↗	10 16 ↗	10 16 ↗	10 16 ↗	12 17 ↗	12 18 ↗	13 20 ↗	13 20 ↗	13 22 ↗	13 22 ↗	13 23 ↗	14 23 ↗	14 23 ↗	15 24 ↗	15 22 ↗	15 22 ↗	15 22 ↗	14 21 ↗	14 21 ↗	13 20 ↗	13 18 ↗	
Houston Pilots E - 51/52	12 17 ↗	12 17 ↗	12 16 ↗	12 17 ↗	12 16 ↗	10 16 ↗	10 16 ↗	12 17 ↗	12 18 ↗	13 20 ↗	13 20 ↗	13 21 ↗	13 22 ↗	13 22 ↗	13 22 ↗	14 22 ↗	14 23 ↗	15 22 ↗	15 22 ↗	14 21 ↗	14 21 ↗	13 20 ↗	13 20 ↗	13 18 ↗	
Houston Pilots D - 37/38	12 17 ↗	12 17 ↗	12 17 ↗	12 17 ↗	12 17 ↗	12 16 ↗	10 16 ↗	12 17 ↗	12 18 ↗	13 20 ↗	13 20 ↗	13 21 ↗	13 22 ↗	13 22 ↗	13 22 ↗	14 22 ↗	14 23 ↗	14 22 ↗	14 22 ↗	14 21 ↗	14 21 ↗	13 20 ↗	13 20 ↗	13 18 ↗	
Houston Pilots C - 25/26	12 17 ↗	12 17 ↗	12 17 ↗	12 17 ↗	12 17 ↗	10 17 ↗	10 16 ↗	12 17 ↗	12 18 ↗	13 20 ↗	13 20 ↗	13 21 ↗	13 22 ↗	13 22 ↗	13 22 ↗	14 22 ↗	14 22 ↗	14 22 ↗	14 22 ↗	14 21 ↗	13 21 ↗	13 20 ↗	13 20 ↗	13 18 ↗	
Houston Pilots B - 11/12	10 17 ↗	10 17 ↗	12 17 ↗	12 17 ↗	10 17 ↗	10 17 ↗	10 16 ↗	10 16 ↗	12 18 ↗	12 20 ↗	13 20 ↗	13 20 ↗	13 21 ↗	13 22 ↗	13 22 ↗	13 22 ↗	13 21 ↗	13 21 ↗	13 21 ↗	13 21 ↗	13 21 ↗	13 20 ↗	13 20 ↗	12 18 ↗	10 18 ↗
Houston Pilots A - 1 & 2 Bravo	14 20 ↗	14 20 ↗	14 20 ↗	14 20 ↗	14 20 ↗	13 20 ↗	13 18 ↗	13 18 ↗	13 20 ↗	13 20 ↗	14 21 ↗	14 21 ↗	14 22 ↗	14 22 ↗	14 22 ↗	14 22 ↗	14 23 ↗	15 22 ↗	15 22 ↗	15 22 ↗	15 22 ↗	15 21 ↗	14 21 ↗	13 21 ↗	13 20 ↗

NOTE: This is automated data that may/may not agree with the official BAM thinking that's found on the daily slides. This data should be used as a guide only.

Houston Pilots: SAT. 1/25/2025



Forecast Discussion

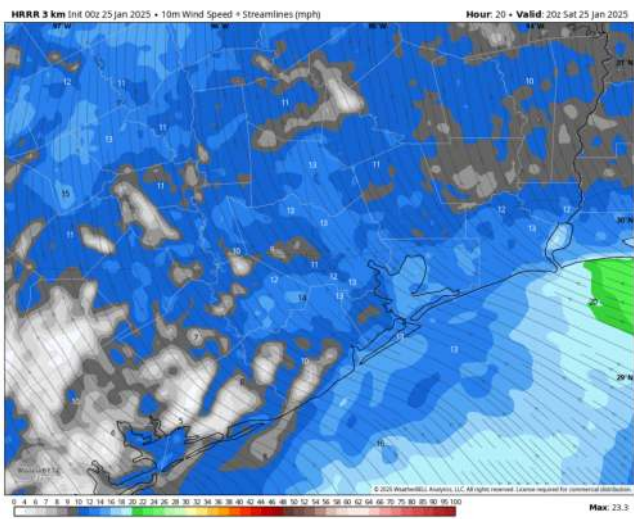
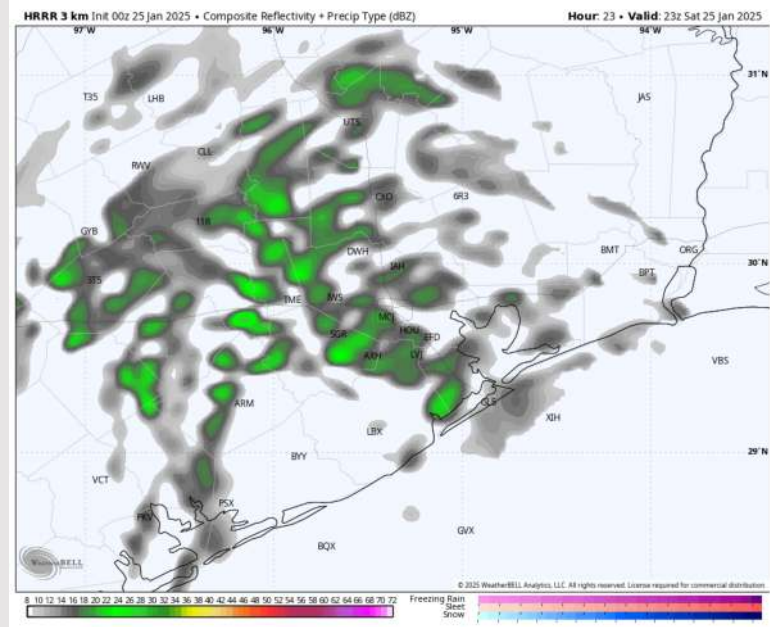
Precip: Light showers are favored to work in after 3 PM CT and continue throughout the rest of the day.

Wind: Winds will be out of the SE for the entire day. **N of Morgan's Point:** Winds will be at 2 – 7 kts through 12 PM before slightly increasing to 7 – 12 kts for the remainder of the day. **S of Morgan's Point:** Winds will be at 13 – 18 kts throughout the day. **Wind gusts may reach 25 kts for Stations S. of Morgan's Point.**

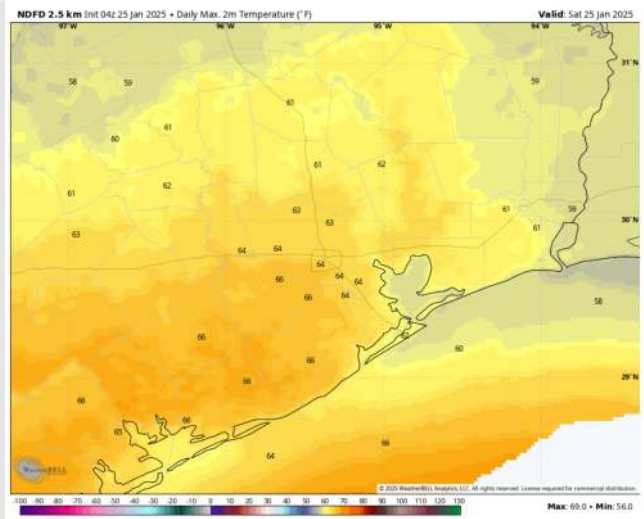
High Temps: **N of Morgan's Point:** Low 60s F. **S of Morgan's Point:** Near 60 F.

Visibility: Not favoring any fog concerns for today.

Precip Image: 5 PM CT



Wind Speed:
2 PM CT



High Temps
Today

Houston Pilots: SUN. 1/26/2025



Forecast Discussion

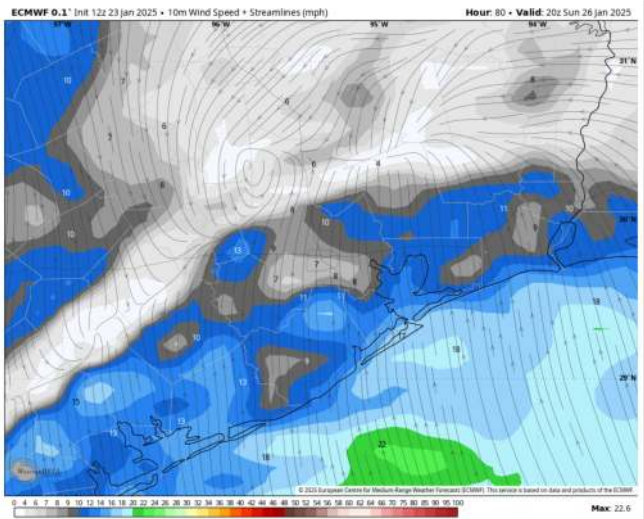
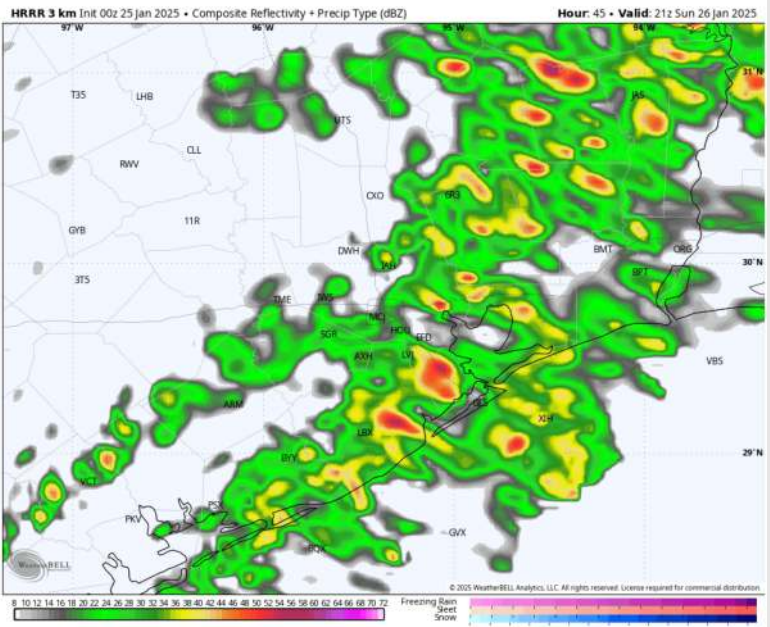
Precip: Isolated showers will work in as early as 3 AM and will continue in that isolated fashion through 12 PM before becoming more widespread for the rest of the day. **Isolated strong cells will have the potential for 25 – 35 kts wind gusts.**

Wind: Winds will be out of the SE through 8 PM before shifting to be out of the NW for the rest of Sunday. **N of Morgan's Point:** Winds will be at 5 – 10 kts through the entire day on Sunday. **S of Morgan's Point:** Winds will be at 12 – 17 kts throughout the day Sunday. **Wind gusts may reach 25 – 30 kts for Stations S. of Morgan's Point.**

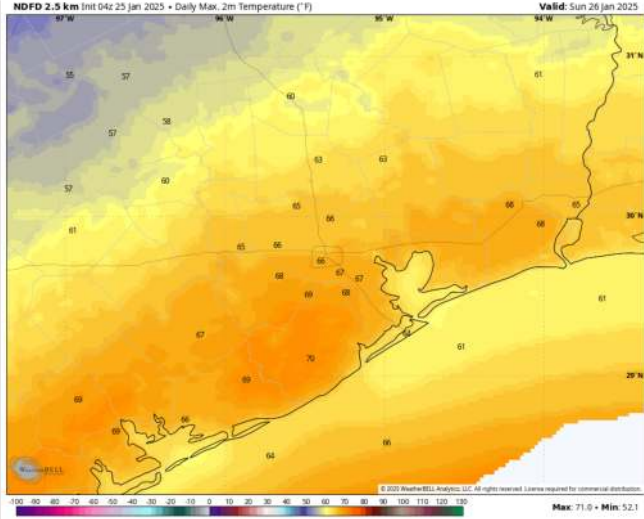
High Temps: **N of Morgan's Point:** Mid-60s F. **S of Morgan's Point:** Low 60s F.

Visibility: Low-end risk for sea-fog will be possible SUN AM before widespread rain showers work in. Check the visibility slide for more info.

Precip Image: 3 PM CT



Wind Speed
11 AM CT



High Temps
Sunday

Houston Pilots: MON. 1/27/2025



Forecast Discussion

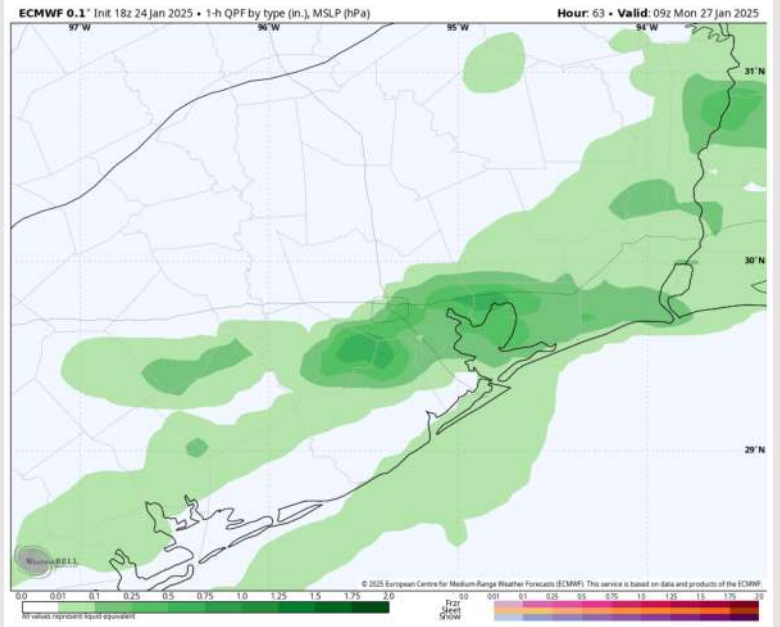
Precip: Widespread rain showers will continue through 12 PM Monday. After 12 PM favoring conditions to dry out for the rest of the day.

Wind: Winds will be variable through 10 AM before slowly shifting from the NE to E throughout the rest of the day. **N of Morgan's Point:** Winds will be at 4 – 9 kts for the rest of the day. **S of Morgan's Point:** Winds will be 6 – 11 kts throughout Monday.

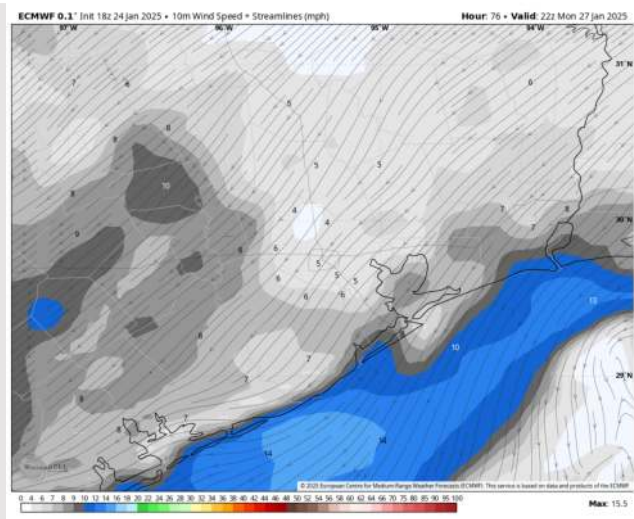
High Temps: **N of Morgan's Point:** Low 60s F. **S of Morgan's Point:** Upper 60s F.

Visibility: No fog concerns for this Monday, visibility can be reduced under heavy rainfall.

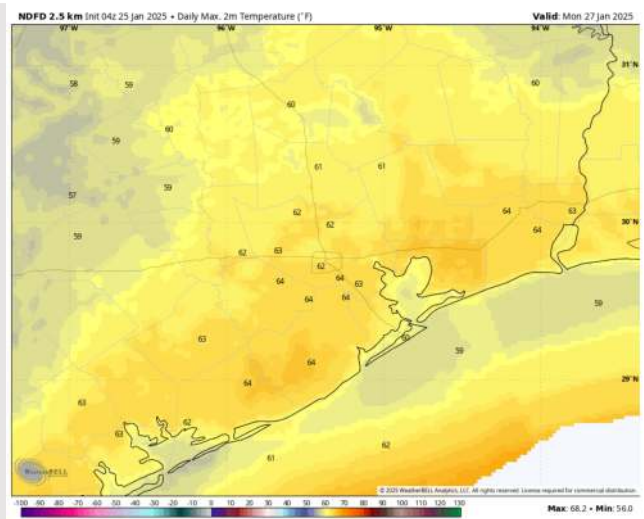
Precip Image: 3 AM CT



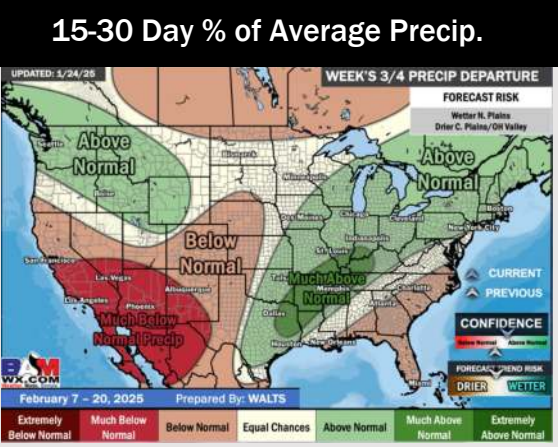
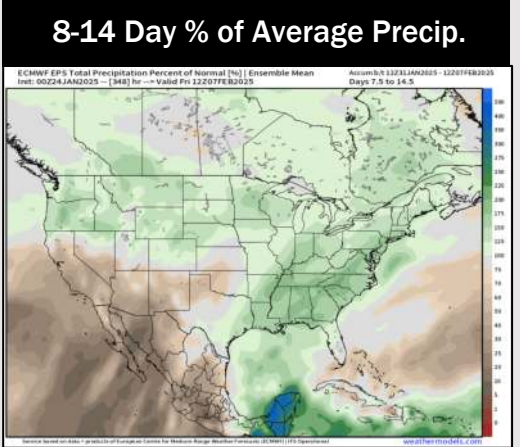
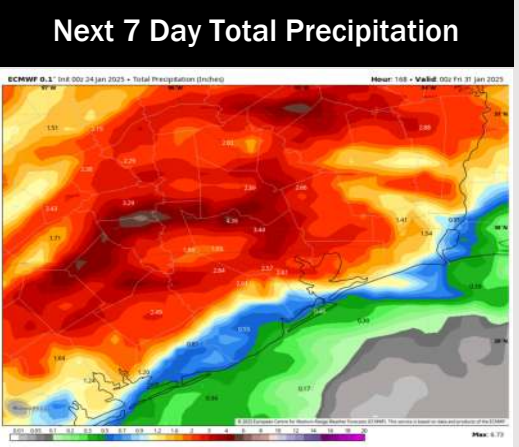
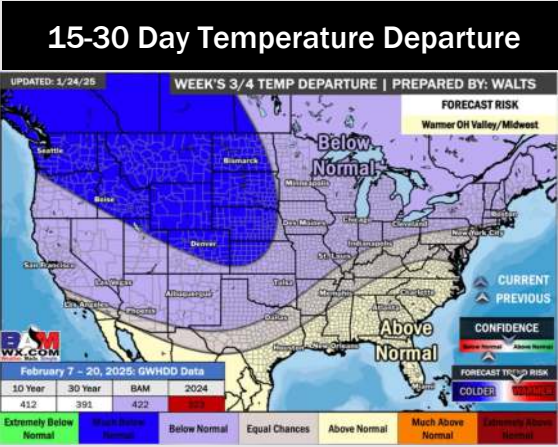
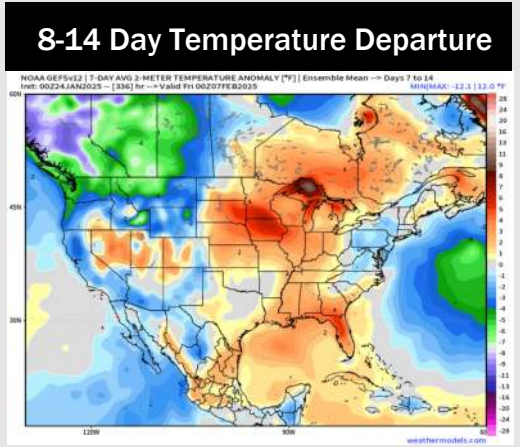
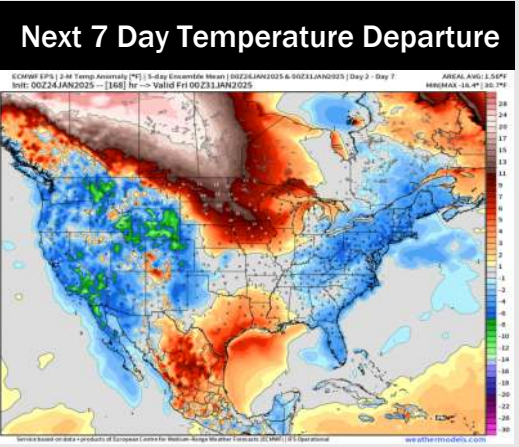
Wind Speed:
4 PM CT



High Temps
Monday



Houston Pilots: 1/25/25



- Temps are expected to be above normal for the week ahead. Favoring minor rain chances this weekend with an uptick in showers early next week.
- Above normal temp and above normal rainfall are expected for week 2.
- Above normal temperatures and above normal precipitation chances are expected for the weeks 3/4 timeframe.