

Houston Pilots Forecast Package



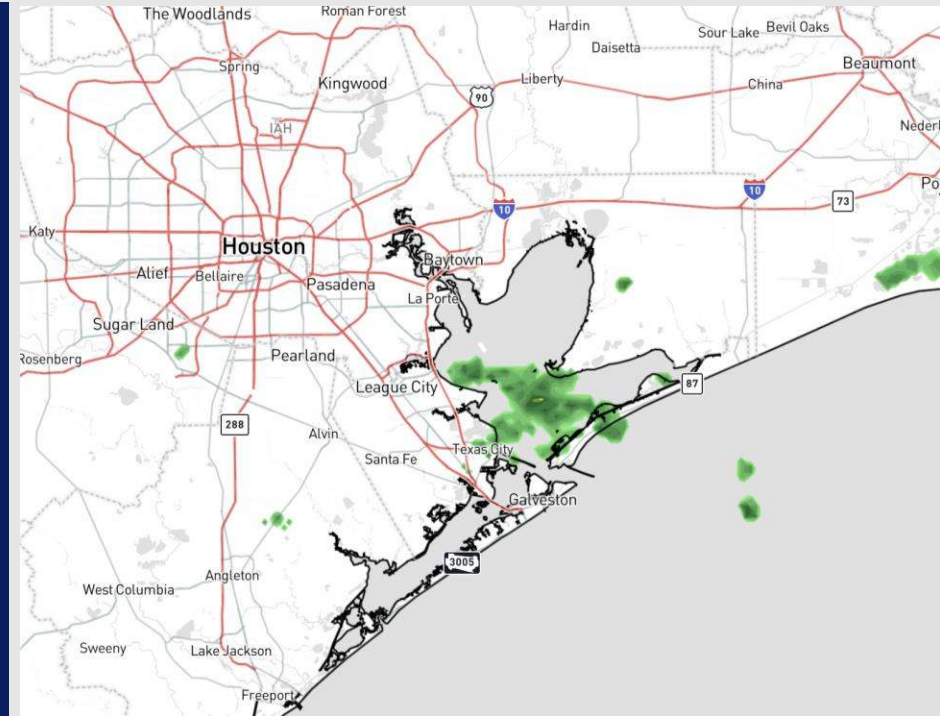
Updated: 8:15 AM CT

Friday, January 3, 2025

Forecaster: Alyssa Elliott

Weather Headlines

- Elevated winds will bring the risk of wave heights of 6'+ come Sunday AM. Check the wave height slide and this [VIDEO](#) for more info.
- Sunday will bring the risk of strong/severe thunderstorms for all stations.
- Elevated winds will be favored beginning late SAT PM and into SUN.



Current Radar: 8:00 AM CT

As always, please do not hesitate to reach out to us with any forecast questions at **(317)-560-8122**. Press 1 for forecast questions.

You can also access real-time forecast updates and 24/7 meteorological chat assistance on your [Clarity](#) app. Click [here](#) for login assistance.



Houston Pilots Port Trigger Update



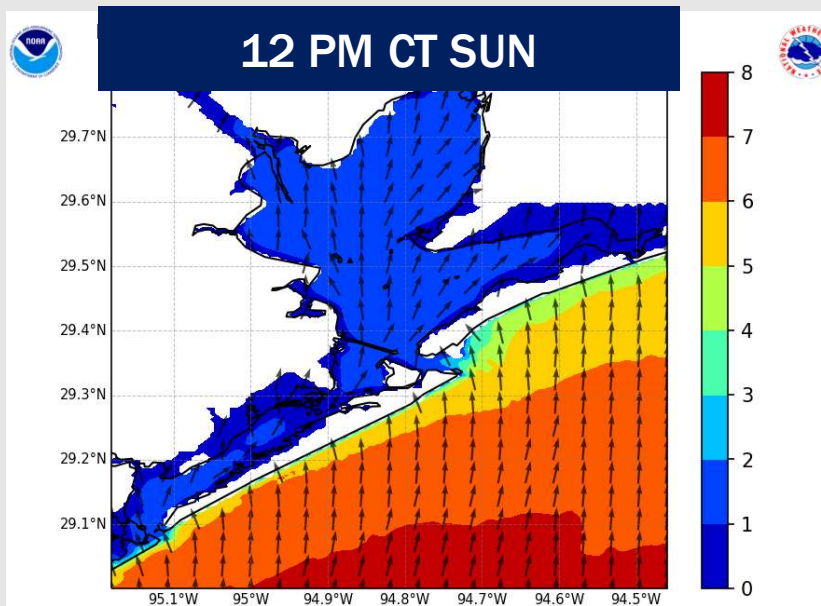
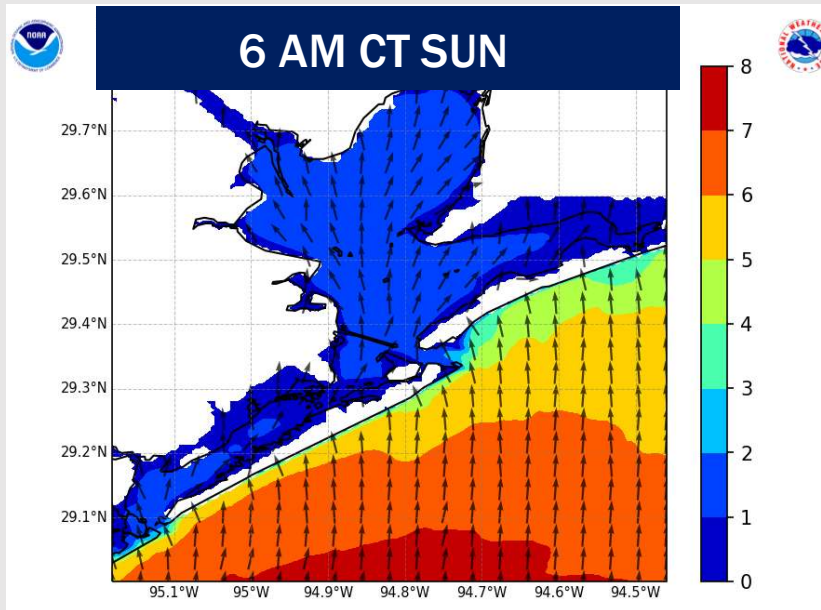
Port Condition	34 KTS+ Sustained Wind Trigger Reached at:	6 Foot Wave Trigger Reached at:	Time Remaining/Trigger Ends At:
Victor	---	---	---
Whiskey	---	---	---
X-Ray	---	CURRENT	SAT 6 AM
Yankee	---	SAT 6 AM	SAT 6 PM
Zulu	---	SAT 6 PM	SUN 9 PM

Port Condition	Trigger Definition	Trigger Reached?
Victor	Hurricane entering/developing in Gulf of Mexico that's a threat to the area	NO
Whiskey	72 hours prior to predicted sustained winds of 34+ KTS	NO
X-Ray	48 hours prior to predicted sustained winds of 34+ KTS or 6' wave height	YES
Yankee	24 hours prior to predicted sustained winds of 34+ KTS or 6' wave height	NO
Zulu	12 hours prior to predicted sustained winds of 34+ KTS or 6' wave height	NO

NOTES: The potential for wave heights at the Boarding Station to reach 6+ ft will be possible beginning at 6 AM Sunday lasting through 9 PM Sunday.

Sustained winds are NOT favored to reach to 36 kts through the weekend.

Wave Height Forecast Update



Slightly elevated, sustained winds out of the S/SE will cause elevated wave heights SUN. The threat is favored to remain for only the Boarding Station.

Expecting wave heights to begin to quickly increase after 3 AM SUN reaching 5 – 6 ft by 6 AM.

Favoring peak wave heights to be between 9 AM – 12 PM with wave heights of 6 – 7 ft.

After 3 PM wave heights will slowly decrease, dipping below 6 ft by 9 PM SUN and 4 ft or less by 9 AM MON.

Houston Pilots Extended Range Visibility Report



Monday 1/6/24

No fog concerns for Monday.

Forecast Confidence



Tuesday 1/7/25

No fog concerns for Tuesday.

Forecast Confidence



Wednesday 1/8/25

No fog concerns for Wednesday.

Forecast Confidence



Chance for Fog

Monday AM	Unlikely
Monday PM	Unlikely
Tuesday AM	Unlikely
Tuesday PM	Unlikely
Wednesday AM	Unlikely
Wednesday PM	Unlikely

Houston Pilots Visibility Chart (miles)



Forecast Confidence



Visibility	Fri 10 am	Fri 11 am	Fri 12 pm	Fri 1 pm	Fri 2 pm	Fri 3 pm	Fri 4 pm	Fri 5 pm	Fri 6 pm	Fri 7 pm	Fri 8 pm	Fri 9 pm	Fri 10 pm	Fri 11 pm	Sat 12 am	Sat 1 am	Sat 2 am	Sat 3 am	Sat 4 am	Sat 5 am	Sat 6 am	Sat 7 am	Sat 8 am	Sat 9 am
Houston Pilots N - 610 Bridge	10	10	10	10	10	10	10	10	10	10	10	10	10	10	10	10	10	7.9	6.9	5.9	5.9	5.9	4.9	2.5
Houston Pilots M - Kinder 1	9	10	10	10	10	10	10	10	10	10	10	10	10	10	10	10	10	7.9	6.9	5.9	5.9	5.9	4.9	2.5
Houston Pilots L - Greens Bayou	9	10	10	10	10	10	10	10	10	10	10	10	10	10	10	10	10	7.9	6.9	5.9	5.9	5.9	4.9	2.5
Houston Pilots K - Shell Crude	9	10	10	10	10	10	10	10	10	10	10	10	10	10	10	10	10	7.9	6.9	5.9	5.9	5.9	3.9	2.5
Houston Pilots J - Lynchburg Ferries	9	10	10	10	10	10	10	10	10	10	10	10	10	10	10	10	10	7.9	6.9	5.9	5.9	5.9	4.9	2.5
Houston Pilots I - Exxon 3	9	10	10	10	10	10	10	10	10	10	10	10	10	10	10	10	10	7.9	6.9	5.9	5.9	5.9	3.9	2.5
Houston Pilots H - Morgans Point	9	10	10	10	10	10	10	10	10	10	10	10	10	10	10	10	10	6.9	5.9	5.9	5.9	5.9	3.9	2.5
Houston Pilots G - 75/76	6.9	8	9	10	10	10	10	9	6.9	6.9	6.9	6.9	6.9	6.9	7.9	10	7.9	6.9	6.9	5.9	5.9	5.9	8	8
Houston Pilots F - 63/64	6.9	8	9	10	10	10	10	9	6.9	6.9	6.9	6.9	6.9	6.9	7.9	9	7.9	6.9	6.9	5.9	5.9	5.9	8	8
Houston Pilots E - 51/52	5.9	6.9	9	10	10	10	9	7.9	6.9	6.9	6.9	6.9	6.9	6.9	6.9	7.9	6.9	6.9	5.9	5.9	5.9	5.9	8	8
Houston Pilots D - 37/38	5.9	6.9	8	10	10	9	9	7.9	6.9	6.9	5.9	5.9	6.9	6.9	6.9	7.9	6.9	6.9	5.9	5.9	5.9	5.9	8	8
Houston Pilots C - 25/26	5.9	6.9	8	10	9	9	7.9	6.9	6.9	6.9	5.9	5.9	6.9	6.9	6.9	6.9	6.9	5.9	5.9	5.9	5.9	5.9	8	8
Houston Pilots B - 11/12	5.9	6.9	8	10	9	9	7.9	6.9	5.9	5.9	5.9	5.9	5.9	6.9	6.9	6.9	6.9	5.9	5.9	5.9	5.9	5.9	8	8
Houston Pilots A - 1 & 2 Bravo	4.9	6.9	6.9	9	8	6.9	6.9	6.9	5.9	5.9	5.9	5.9	5.9	5.9	5.9	6.9	5.9	5.9	5.9	5.9	5.9	5.9	9	9

NOTE: This is automated data that may/may not agree with the official BAM thinking that's found on the daily slides or special visibility report slides. This data should be used as a guide only

Houston Pilots Wind Chart



Sustained wind 10 Knots

Gusts 15 Knots

Wind from the SE

Example

10

15

↙

Wind	Fri 10 am	Fri 11 am	Fri 12 pm	Fri 1 pm	Fri 2 pm	Fri 3 pm	Fri 4 pm	Fri 5 pm	Fri 6 pm	Fri 7 pm	Fri 8 pm	Fri 9 pm	Fri 10 pm	Fri 11 pm	Sat 12 am	Sat 1 am	Sat 2 am	Sat 3 am	Sat 4 am	Sat 5 am	Sat 6 am	Sat 7 am	Sat 8 am	Sat 9 am	
Houston Pilots N - 610 Bridge	8 15 ↙	8 16 ↙	8 17 ↙	8 18 ↙	8 17 ↙	8 16 ↙	7 16 ↙	7 15 ↙	6 13 ↙	6 12 ↙	6 12 ↙	6 12 ↙	6 12 ↙	6 13 ↙	6 12 ↙	6 13 ↙	6 13 ↙	7 14 ↙	7 14 ↙	7 14 ↙	7 15 ↙	8 15 ↙	8 15 ↙	8 15 ↙	
Houston Pilots M - Kinder 1	8 16 ↙	8 16 ↙	8 17 ↙	8 18 ↙	8 17 ↙	8 16 ↙	8 16 ↙	7 15 ↙	6 13 ↙	6 12 ↙	6 12 ↙	6 12 ↙	6 12 ↙	6 13 ↙	6 12 ↙	6 13 ↙	6 13 ↙	7 14 ↙	7 14 ↙	7 15 ↙	8 15 ↙	8 15 ↙	8 15 ↙	8 15 ↙	
Houston Pilots L - Greens Bayou	8 16 ↙	8 16 ↙	8 17 ↙	8 17 ↙	8 16 ↙	8 16 ↙	8 15 ↙	7 14 ↙	6 13 ↙	6 12 ↙	6 12 ↙	6 12 ↙	6 12 ↙	6 13 ↙	6 13 ↙	6 14 ↙	6 14 ↙	7 14 ↙	7 15 ↙	7 15 ↙	8 15 ↙	8 15 ↙	8 15 ↙	8 15 ↙	
Houston Pilots K - Shell Crude	8 16 ↙	8 16 ↙	8 17 ↙	8 17 ↙	8 16 ↙	8 16 ↙	7 15 ↙	7 13 ↙	6 12 ↙	6 12 ↙	6 12 ↙	6 12 ↙	6 12 ↙	6 13 ↙	6 13 ↙	6 14 ↙	6 14 ↙	7 14 ↙	7 15 ↙	7 15 ↙	8 15 ↙	8 15 ↙	8 15 ↙	8 15 ↙	
Houston Pilots J - Lynchburg Ferries	8 15 ↙	8 16 ↙	8 17 ↙	8 17 ↙	8 16 ↙	8 15 ↙	7 15 ↙	7 14 ↙	6 13 ↙	6 10 ↙	6 10 ↙	6 12 ↙	6 12 ↙	6 13 ↙	6 12 ↙	6 13 ↙	6 13 ↙	6 14 ↙	7 14 ↙	7 15 ↙	7 15 ↙	7 15 ↙	8 15 ↙	7 15 ↙	
Houston Pilots I - Exxon 3	10 16 ↙	10 17 ↙	10 17 ↙	10 18 ↙	10 17 ↙	9 16 ↙	9 16 ↙	9 15 ↙	8 14 ↙	8 13 ↙	8 13 ↙	8 13 ↙	8 14 ↙	9 14 ↙	10 14 ↙	10 15 ↙	10 15 ↙	10 16 ↙	12 16 ↙	12 16 ↙	12 17 ↙	12 17 ↙	12 16 ↙	10 16 ↙	10 16 ↙
Houston Pilots H - Morgans Point	10 16 ↙	10 17 ↙	10 17 ↙	10 18 ↙	10 17 ↙	9 16 ↙	9 16 ↙	9 14 ↙	8 13 ↙	8 13 ↙	8 13 ↙	8 14 ↙	9 14 ↙	9 15 ↙	10 15 ↙	10 16 ↙	10 16 ↙	10 16 ↙	12 16 ↙	12 16 ↙	12 17 ↙	12 16 ↙	10 16 ↙	10 16 ↙	10 16 ↙
Houston Pilots G - 75/76	13 20 ↙	13 20 ↙	12 20 ↙	10 20 ↙	10 18 ↙	10 17 ↙	10 17 ↙	10 16 ↙	9 14 ↙	10 15 ↙	10 15 ↙	10 15 ↙	12 16 ↙	12 17 ↙	12 17 ↙	13 18 ↙	13 18 ↙	13 18 ↙	14 20 ↙	14 20 ↙	14 18 ↙	13 20 ↙	13 20 ↙	13 18 ↙	
Houston Pilots F - 63/64	13 20 ↙	13 20 ↙	12 20 ↙	10 20 ↙	10 18 ↙	10 17 ↙	10 17 ↙	10 16 ↙	10 15 ↙	10 15 ↙	10 15 ↙	10 15 ↙	12 16 ↙	12 17 ↙	13 18 ↙	13 18 ↙	13 18 ↙	14 20 ↙	14 20 ↙	14 20 ↙	14 18 ↙	14 20 ↙	13 20 ↙	13 18 ↙	
Houston Pilots E - 51/52	13 20 ↙	13 20 ↙	13 21 ↙	12 20 ↙	12 18 ↙	10 17 ↙	12 17 ↙	12 16 ↙	10 16 ↙	10 16 ↙	10 16 ↙	10 16 ↙	12 16 ↙	12 17 ↙	13 18 ↙	13 18 ↙	13 20 ↙	13 20 ↙	14 20 ↙	14 20 ↙	14 20 ↙	14 20 ↙	14 20 ↙	13 20 ↙	13 20 ↙
Houston Pilots D - 37/38	14 20 ↙	13 21 ↙	13 21 ↙	13 21 ↙	13 20 ↙	12 20 ↙	12 18 ↙	12 17 ↙	10 16 ↙	10 17 ↙	12 17 ↙	12 17 ↙	12 17 ↙	12 18 ↙	13 18 ↙	13 18 ↙	13 20 ↙	13 20 ↙	14 20 ↙	14 20 ↙	14 20 ↙	14 20 ↙	14 20 ↙	13 20 ↙	13 20 ↙
Houston Pilots C - 25/26	14 21 ↙	14 21 ↙	14 22 ↙	13 22 ↙	13 21 ↙	13 21 ↙	13 20 ↙	12 18 ↙	12 18 ↙	12 17 ↙	12 17 ↙	12 17 ↙	12 18 ↙	13 18 ↙	13 20 ↙	13 20 ↙	13 20 ↙	13 20 ↙	13 20 ↙	13 20 ↙	13 20 ↙	13 20 ↙	13 20 ↙	13 20 ↙	13 20 ↙
Houston Pilots B - 11/12	14 21 ↙	14 21 ↙	14 22 ↙	14 22 ↙	13 21 ↙	13 21 ↙	13 20 ↙	12 18 ↙	12 18 ↙	10 18 ↙	10 18 ↙	12 18 ↙	12 18 ↙	12 18 ↙	12 20 ↙	13 20 ↙	13 20 ↙	13 20 ↙	13 20 ↙	13 20 ↙	13 20 ↙	13 20 ↙	13 20 ↙	13 20 ↙	12 18 ↙
Houston Pilots A - 1 & 2 Bravo	16 23 ↙	16 24 ↙	16 24 ↙	15 24 ↙	15 24 ↙	15 23 ↙	15 22 ↙	14 22 ↙	14 21 ↙	14 20 ↙	14 21 ↙	15 22 ↙	15 21 ↙	15 22 ↙	15 22 ↙	15 22 ↙	15 22 ↙	15 22 ↙	15 22 ↙	15 22 ↙	15 22 ↙	15 22 ↙	15 21 ↙	15 21 ↙	14 20 ↙

NOTE: This is automated data that may/may not agree with the official BAM thinking that's found on the daily slides. This data should be used as a guide only.

Houston Pilots: FRI. 1/3/2025



Forecast Discussion

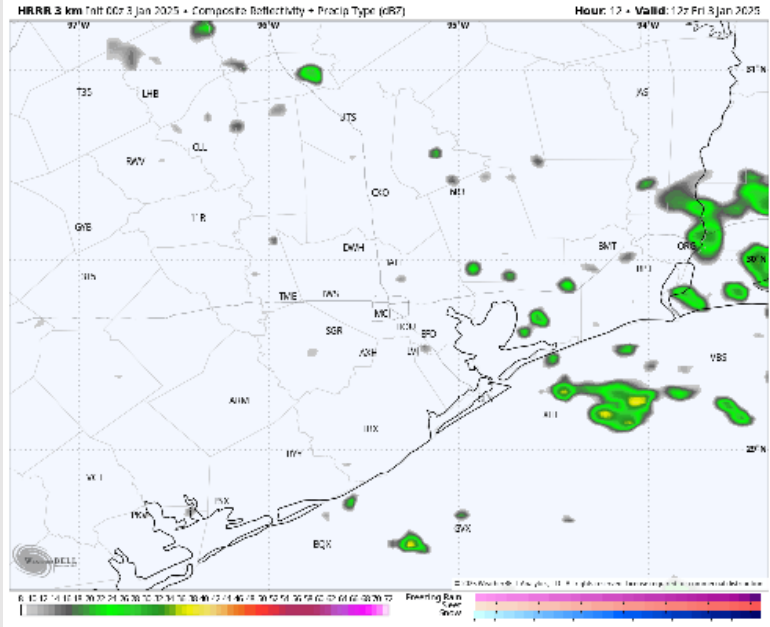
Precip: Isolated showers (20%) will be possible through noon. Favoring dry conditions, the rest of the day.

Wind: Winds will be out of the E/NE throughout the day. **N of Morgan's Point:** Winds will be at 3 – 8 kts throughout the day today. **S of Morgan's Point:** Winds will be at 14 – 19 kts through 1 PM before decreasing to 8 – 13 kts.

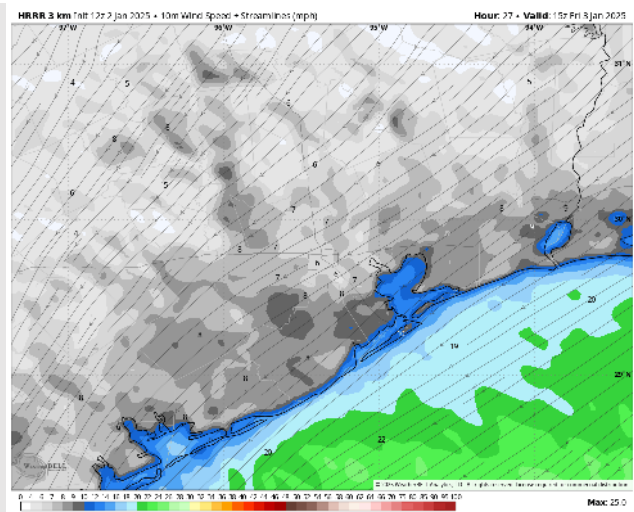
High Temps: **N of Morgan's Point:** Upper 60s F. **S of Morgan's Point:** Low to Mid 60s F

Visibility: A few pockets of reduced visibility of 2-4 miles will be possible thanks to isolated drizzle through the AM for all Stations.

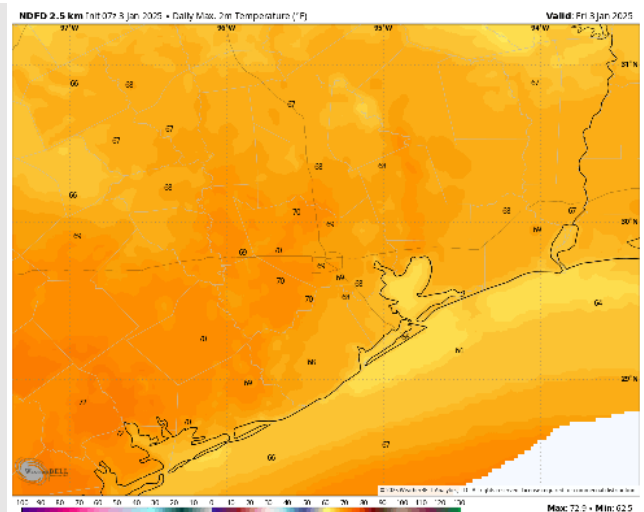
Precip Image: 6 AM CT



Wind Speed:
9 AM CT



High Temps
Today



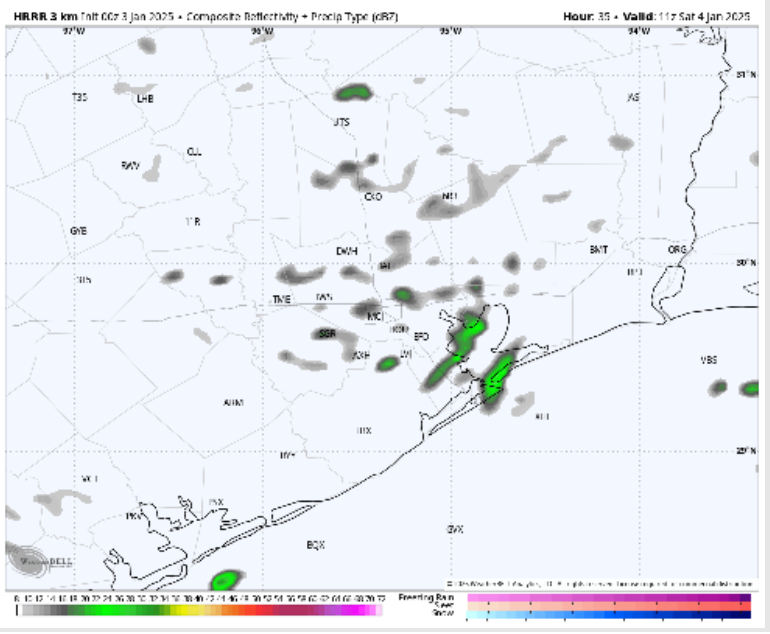
Houston Pilots: SAT. 1/4/2025



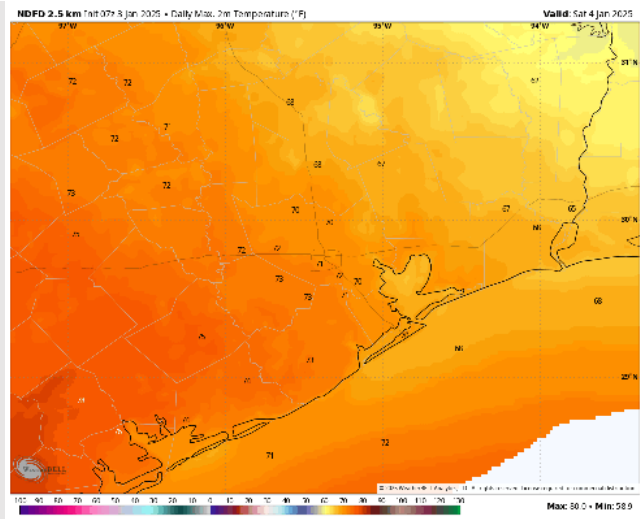
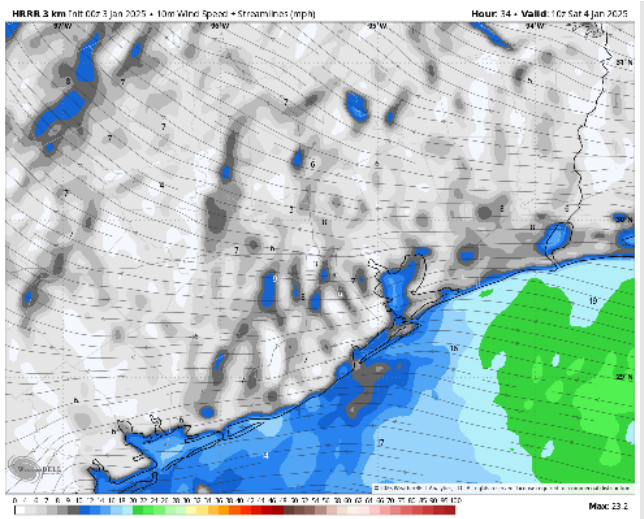
Forecast Discussion

- Precip:** Isolated (20%) rain showers are possible through 6 PM before conditions dry out for the rest of SAT.
- Wind:** Winds will be out of the E / SE through the entire day. **N of Morgan's Point:** Winds will be 3 – 8 kts throughout Saturday. **S of Morgan's Point:** Winds will be at 13 – 18 kts through 12 PM before decreasing to 7 – 12 kts for the rest of Saturday.
- High Temps:** **N of Morgan's Point:** Low 70 F. **S of Morgan's Point:** upper 60's near 70 F.
- Visibility:** Watching for a very localized sea fog risks for all stations Saturday AM. Confidence is below normal.

Precip Image: 5 AM CT



Wind Speed:
4 AM CT



High Temps
Saturday

Houston Pilots: SUN. 1/5/2025



Forecast Discussion

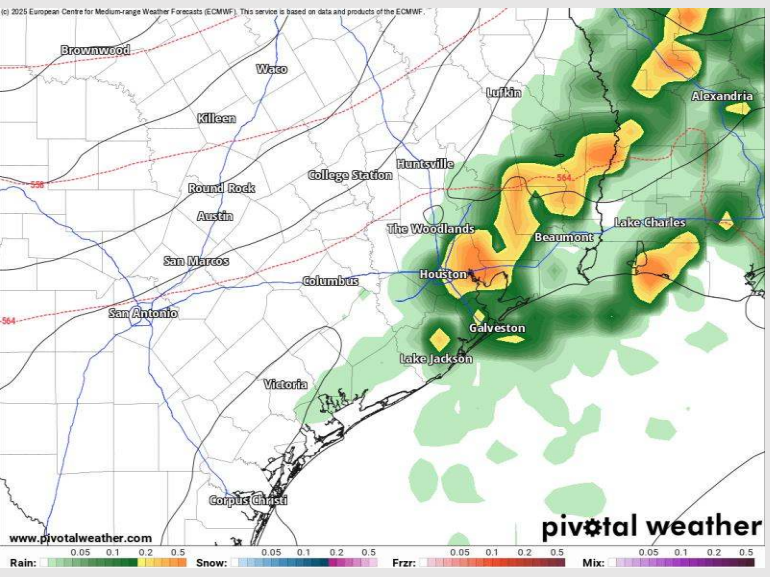
Precip: Beginning at 6 AM light showers will be possible through 12 PM before a line of strong/severe storms work in through 6 PM before rain chances exit for the day. **Risks will be for wind gusts of 45-55 kts, small hail, and an isolated tornado risk.**

Wind: Winds will be out of the SW through 6 PM before shifting to be out of the N/NW for the rest of the day. **N of Morgan's Point:** Winds will be at 8 – 13 kts throughout the day. **S of Morgan's Point:** Winds will be at 15 – 20 kts through 6 PM before winds increase to 25 – 30 kts for the rest of the day. **Non-thunderstorm wind gusts of 20 – 25 kts possible for all stations throughout Sunday. After 6 PM wind gusts of 30 kts will be possible for the boarding station.**

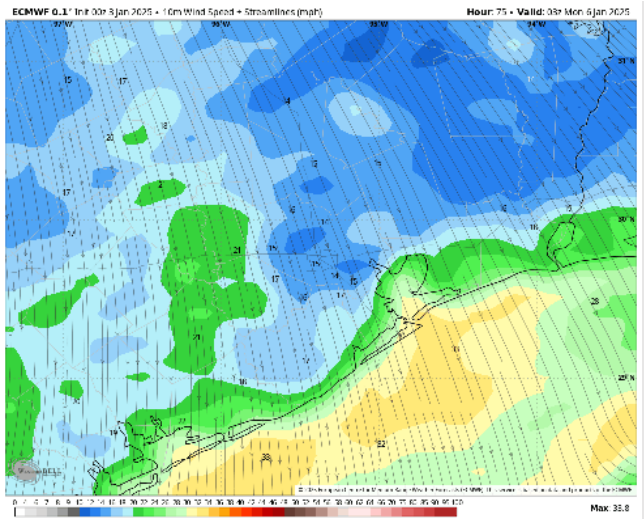
High Temps: **N of Morgan's Point:** Mid-70s F. **S of Morgan's Point:** Low 70s F.

Visibility: No fog concerns on Sunday, however, <1.0 mile visibility will be possible as thunderstorms work through.

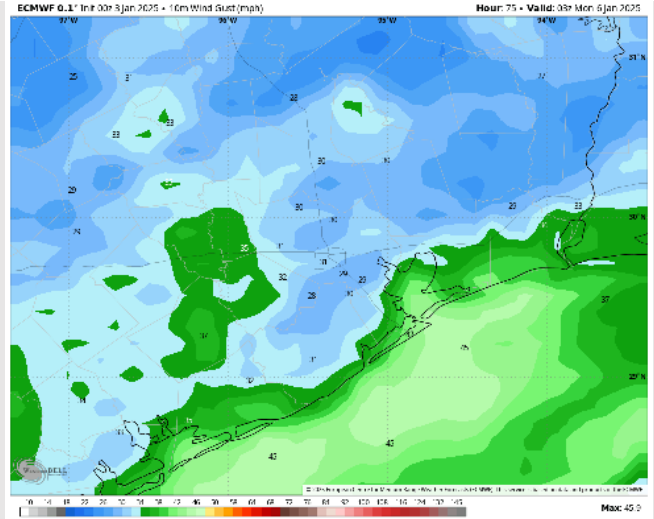
Precip Image: 3 PM CT



Wind Speed
9 PM CT



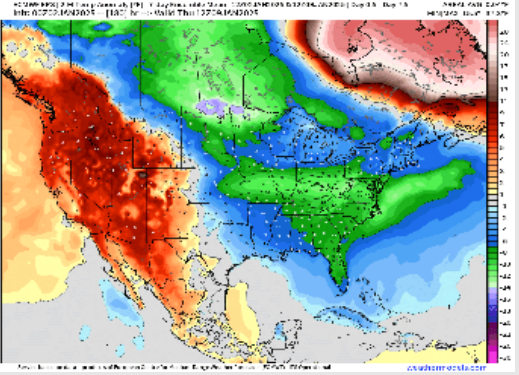
Max Wind
Gusts Sunday



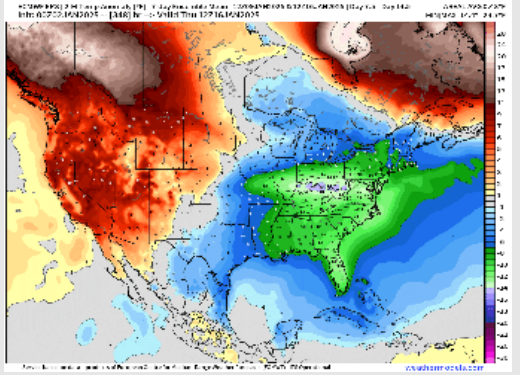
Houston Pilots: 1/3/2025



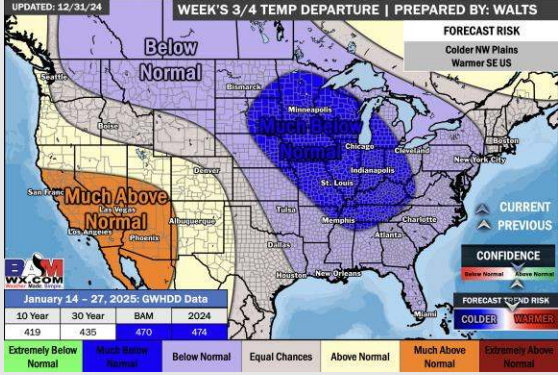
Next 7 Day Temperature Departure



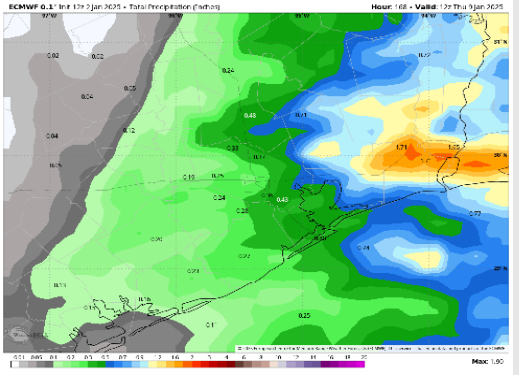
8-14 Day Temperature Departure



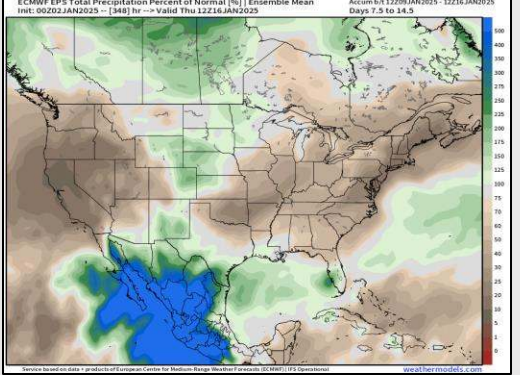
15-30 Day Temperature Departure



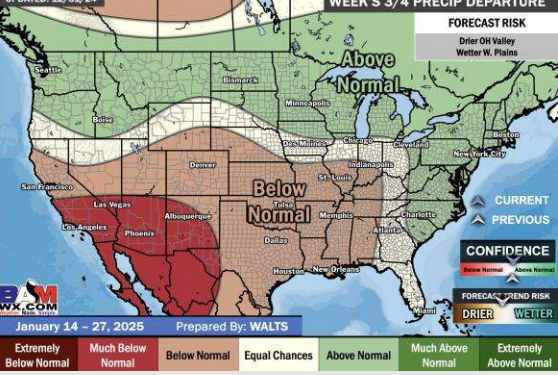
Next 7 Day Total Precipitation



8-14 Day % of Average Precip.



15-30 Day % of Average Precip.



- Temps are expected to be below normal for the week 1 timeframe. Rain favored over the weekend and then drier conditions in play for the start of next week.
- Much below normal temperatures and near normal rainfall are expected for week 2.
- Below normal temperatures and below normal precipitation chances are expected for the weeks 3/4 timeframe.