

Houston Pilots Forecast Package



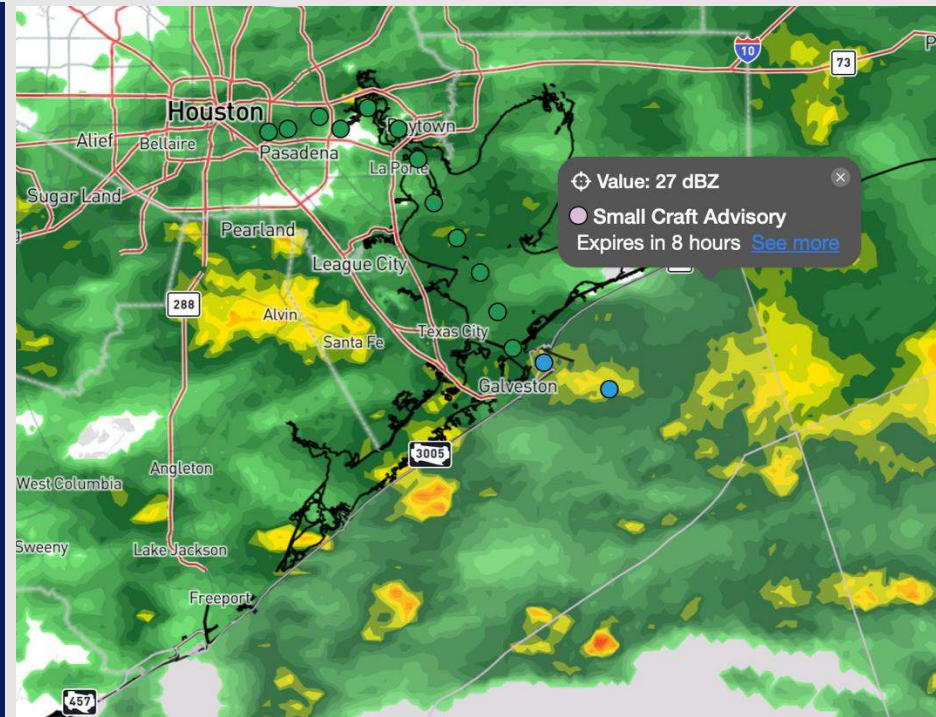
Updated: 1:10 PM CT

Wednesday, January 15, 2025

Forecaster: Hope Kleitsch

Weather Headlines

- **Gusty winds of 20-25 kts will be possible through this evening.**
- **Elevated wave heights of 3ft – 4ft are favored through 12 PM THU at the Boarding Station.**
- **Patchy, non-sea fog risks will be in play for Friday AM.**



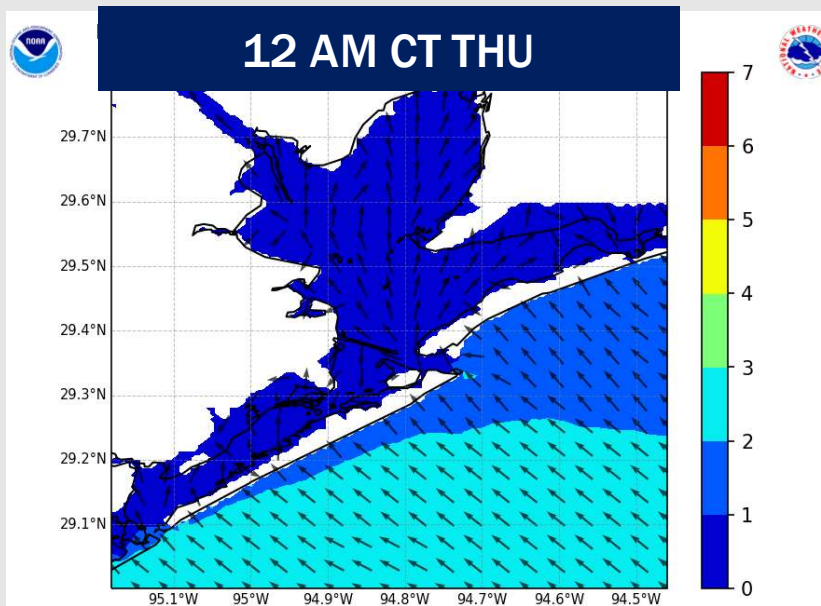
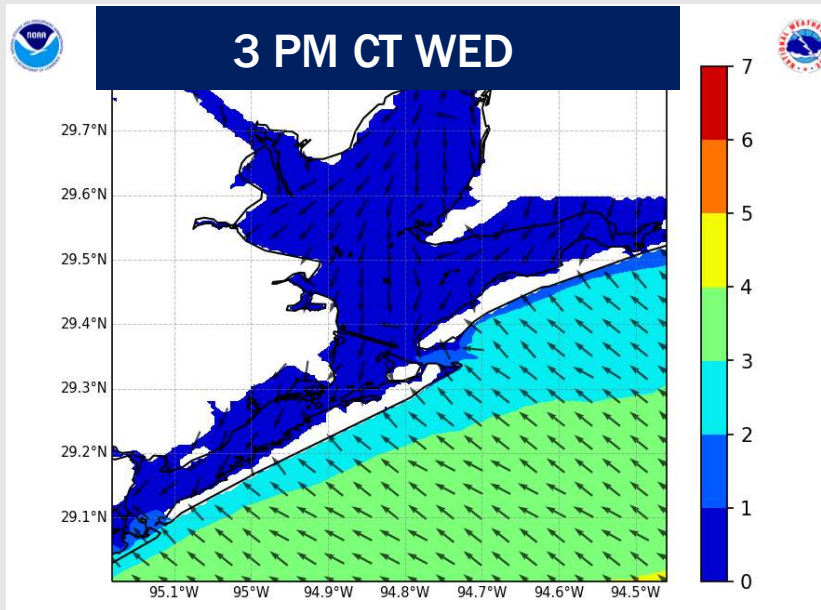
Current Radar: 1:05 PM CT

As always, please do not hesitate to reach out to us with any forecast questions at **(317)-560-8122**. Press **1** for forecast questions.

You can also access real-time forecast updates and 24/7 meteorological chat assistance on your [Clarity](#) app. Click [here](#) for login assistance.



Wave Height Forecast Update



Wave heights are currently ~3ft – 4ft at the Boarding Station and are favored to hover ~3ft through THU afternoon, with an occasional 4ft wave.

Wave heights are expected to decrease below 3ft after 12PM THU.

Houston Pilots Extended Range Visibility Report



Saturday 1/18/24

Monitoring the risk for patchy sea fog to briefly develop for Stations S. of Morgan's Point for Saturday AM prior to frontal passage.

Forecast Confidence



Monday 1/20/25

No fog concerns for Monday.

Forecast Confidence



Sunday 1/19/25

No fog concerns for Sunday.

Forecast Confidence



Chance for Fog

Saturday AM	Low-End
Saturday PM	Unlikely
Sunday AM	Unlikely
Sunday PM	Unlikely
Monday AM	Unlikely
Monday PM	Unlikely

Houston Pilots Visibility Chart (miles)



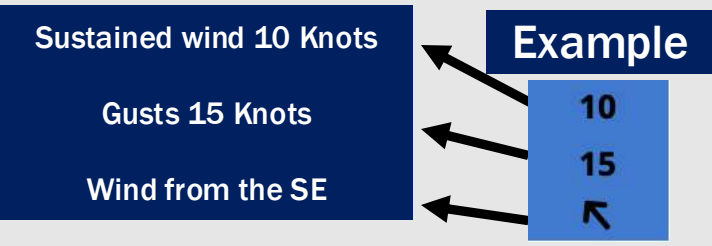
Forecast Confidence



Visibility	Wed 2 pm	Wed 3 pm	Wed 4 pm	Wed 5 pm	Wed 6 pm	Wed 7 pm	Wed 8 pm	Wed 9 pm	Wed 10 pm	Wed 11 pm	Thu 12 am	Thu 1 am	Thu 2 am	Thu 3 am	Thu 4 am	Thu 5 am	Thu 6 am	Thu 7 am	Thu 8 am	Thu 9 am	Thu 10 am	Thu 11 am	Thu 12 pm	Thu 1 pm
Houston Pilots N - 610 Bridge	10	10	10	10	10	10	10	10	10	10	10	10	10	10	10	10	10	10	10	10	10	10	10	10
Houston Pilots M - Kinder 1	10	10	10	10	10	10	10	10	10	10	10	10	10	10	10	10	10	10	10	10	10	10	10	10
Houston Pilots L - Greens Bayou	10	10	10	10	10	10	10	10	10	10	10	10	10	10	10	10	10	10	10	10	10	10	10	10
Houston Pilots K - Shell Crude	10	10	10	10	10	10	10	10	10	10	10	10	10	10	10	10	10	10	10	10	10	10	10	10
Houston Pilots J - Lynchburg Ferries	10	10	10	10	10	10	10	10	10	10	10	10	10	10	10	10	10	10	10	10	10	10	10	10
Houston Pilots I - Exxon 3	10	10	10	10	10	10	10	10	10	10	10	10	10	10	10	10	10	10	10	10	10	10	10	10
Houston Pilots H - Morgans Point	10	10	10	10	10	10	10	10	10	10	10	10	10	10	10	10	10	10	10	10	10	10	10	10
Houston Pilots G - 75/76	6.9	6.9	5.9	6.9	6.9	6.9	6.9	6.9	6.9	7.9	10	10	10	10	10	10	10	10	10	10	10	10	10	10
Houston Pilots F - 63/64	6.9	6.9	5.9	6.9	6.9	6.9	6.9	6.9	6.9	7.9	10	10	10	10	10	10	10	10	10	10	10	10	10	10
Houston Pilots E - 51/52	6.9	5.9	4.9	5.9	5.9	6.9	6.9	6.9	6.9	7.9	10	10	10	10	10	10	10	10	10	10	10	10	10	10
Houston Pilots D - 37/38	6.9	5.9	4.9	5.9	5.9	6.9	6.9	6.9	6.9	7.9	10	10	10	10	10	10	10	10	10	10	10	10	10	10
Houston Pilots C - 25/26	6.9	5.9	4.9	5.9	5.9	6.9	7.9	6.9	6.9	7.9	10	10	10	10	10	10	10	10	10	10	10	10	10	10
Houston Pilots B - 11/12	6.9	4.9	4.9	5.9	5.9	6.9	6.9	6.9	6.9	6.9	10	10	10	10	10	10	10	10	10	10	10	10	10	10
Houston Pilots A - 1 & 2 Bravo	5.9	4.9	4.9	4.9	5.9	6.9	6.9	5.9	5.9	5.9	6.9	9	10	10	10	10	10	10	10	10	10	10	10	10

NOTE: This is automated data that may/may not agree with the official BAM thinking that's found on the daily slides or special visibility report slides. This data should be used as a guide only

Houston Pilots Wind Chart



Wind	Wed 2 pm	Wed 3 pm	Wed 4 pm	Wed 5 pm	Wed 6 pm	Wed 7 pm	Wed 8 pm	Wed 9 pm	Wed 10 pm	Wed 11 pm	Thu 12 am	Thu 1 am	Thu 2 am	Thu 3 am	Thu 4 am	Thu 5 am	Thu 6 am	Thu 7 am	Thu 8 am	Thu 9 am	Thu 10 am	Thu 11 am	Thu 12 pm	Thu 1 pm		
Houston Pilots N - 610 Bridge	7 15 ↘	7 15 ↘	7 15 ↘	7 14 ↘	7 14 ↘	6 13 ↘	6 12 ↘	6 12 ↘	6 10 ↘	5 10 ↘	5 10 ↘	5 9 ↘	5 9 ↘	3 9 ↘	5 9 ↘	3 9 ↘	3 8 ↘	3 8 ↘	3 8 ↘	3 7 ↘	3 8 ↘	3 8 ↘	3 8 ↘	3 9 ↘	5 9 ↘	
Houston Pilots M - Kinder 1	7 15 ↘	7 15 ↘	7 15 ↘	7 14 ↘	7 14 ↘	6 13 ↘	6 12 ↘	6 12 ↘	6 10 ↘	5 10 ↘	5 10 ↘	5 9 ↘	5 9 ↘	3 9 ↘	5 9 ↘	3 9 ↘	3 8 ↘	3 8 ↘	3 8 ↘	3 7 ↘	3 8 ↘	3 8 ↘	3 8 ↘	3 9 ↘	5 9 ↘	
Houston Pilots L - Greens Bayou	8 15 ↘	8 15 ↘	8 15 ↘	8 14 ↘	7 14 ↘	6 13 ↘	6 12 ↘	6 12 ↘	6 10 ↘	5 10 ↘	5 10 ↘	5 9 ↘	5 9 ↘	5 9 ↘	5 9 ↘	3 9 ↘	3 8 ↘	3 8 ↘	3 8 ↘	3 8 ↘	3 9 ↘	3 8 ↘	3 8 ↘	3 9 ↘	3 9 ↘	
Houston Pilots K - Shell Crude	8 15 ↘	8 15 ↘	8 15 ↘	8 15 ↘	7 14 ↘	6 13 ↘	6 12 ↘	6 12 ↘	6 12 ↘	6 10 ↘	6 10 ↘	5 10 ↘	5 10 ↘	5 9 ↘	5 9 ↘	3 9 ↘	3 9 ↘	3 9 ↘	3 8 ↘	3 8 ↘	3 9 ↘	3 8 ↘	3 8 ↘	3 9 ↘	5 9 ↘	
Houston Pilots J - Lynchburg Ferries	7 15 ↘	7 15 ↘	8 15 ↘	7 14 ↘	7 14 ↘	6 13 ↘	6 12 ↘	6 10 ↘	6 10 ↘	5 10 ↘	5 10 ↘	5 9 ↘	3 9 ↘	3 9 ↘	3 9 ↘	3 9 ↘	3 8 ↘	3 8 ↘	3 8 ↘	3 7 ↘	3 8 ↘	3 8 ↘	3 8 ↘	3 9 ↘	3 9 ↘	
Houston Pilots I - Exxon 3	8 16 ↘	9 16 ↘	9 16 ↘	9 16 ↘	9 15 ↘	9 14 ↘	9 14 ↘	8 13 ↘	8 13 ↘	8 13 ↘	8 12 ↘	8 12 ↘	8 10 ↘	7 10 ↘	7 10 ↘	7 10 ↘	7 10 ↘	7 10 ↘	7 10 ↘	6 9 ↘	6 9 ↘	6 9 ↘	6 8 ↘	6 9 ↘	6 9 ↘	
Houston Pilots H - Morgans Point	9 16 ↘	9 16 ↘	9 16 ↘	10 16 ↘	9 15 ↘	9 15 ↘	9 14 ↘	8 14 ↘	8 13 ↘	8 13 ↘	8 12 ↘	8 12 ↘	8 12 ↘	7 10 ↘	7 10 ↘	7 10 ↘	7 10 ↘	7 10 ↘	7 10 ↘	6 9 ↘	6 9 ↘	6 9 ↘	6 9 ↘	6 9 ↘	6 9 ↘	
Houston Pilots G - 75/76	10 17 ↘	10 17 ↘	10 17 ↘	10 17 ↘	10 17 ↘	10 16 ↘	10 16 ↘	10 15 ↘	10 15 ↘	10 15 ↘	10 14 ↘	9 14 ↘	9 14 ↘	9 13 ↘	9 13 ↘	8 13 ↘	8 13 ↘	8 13 ↘	8 12 ↘	8 12 ↘	7 10 ↘	6 10 ↘	6 9 ↘	6 10 ↘	6 10 ↘	
Houston Pilots F - 63/64	10 18 ↘	10 18 ↘	10 18 ↘	10 18 ↘	12 17 ↘	12 17 ↘	10 16 ↘	10 16 ↘	10 15 ↘	10 15 ↘	10 15 ↘	10 14 ↘	9 14 ↘	9 14 ↘	9 13 ↘	9 13 ↘	9 13 ↘	9 13 ↘	8 13 ↘	8 12 ↘	8 12 ↘	8 10 ↘	7 10 ↘	6 10 ↘	6 9 ↘	
Houston Pilots E - 51/52	12 20 ↘	12 18 ↘	12 18 ↘	12 18 ↘	13 18 ↘	13 17 ↘	12 17 ↘	12 17 ↘	10 16 ↘	10 16 ↘	10 15 ↘	10 15 ↘	10 14 ↘	10 14 ↘	9 14 ↘	9 14 ↘	9 14 ↘	9 14 ↘	9 13 ↘	8 13 ↘	8 13 ↘	8 12 ↘	7 10 ↘	6 10 ↘	6 10 ↘	
Houston Pilots D - 37/38	13 20 ↘	13 20 ↘	13 20 ↘	13 20 ↘	13 20 ↘	13 17 ↘	13 17 ↘	12 17 ↘	12 17 ↘	12 17 ↘	10 16 ↘	10 16 ↘	10 16 ↘	10 15 ↘	10 15 ↘	10 15 ↘	10 15 ↘	10 15 ↘	9 14 ↘	9 14 ↘	8 13 ↘	8 13 ↘	7 12 ↘	6 12 ↘	6 12 ↘	
Houston Pilots C - 25/26	13 21 ↘	13 21 ↘	13 21 ↘	13 21 ↘	13 20 ↘	13 18 ↘	13 18 ↘	13 17 ↘	12 17 ↘	12 17 ↘	12 17 ↘	12 16 ↘	10 16 ↘	10 16 ↘	10 16 ↘	10 15 ↘	10 15 ↘	10 15 ↘	10 15 ↘	9 14 ↘	9 14 ↘	8 14 ↘	8 13 ↘	7 12 ↘	7 12 ↘	
Houston Pilots B - 11/12	13 21 ↘	13 21 ↘	13 21 ↘	13 21 ↘	13 20 ↘	13 18 ↘	13 18 ↘	12 18 ↘	12 17 ↘	12 17 ↘	10 17 ↘	10 17 ↘	10 17 ↘	10 16 ↘	10 16 ↘	10 16 ↘	10 16 ↘	10 16 ↘	9 15 ↘	9 15 ↘	9 14 ↘	8 14 ↘	8 13 ↘	8 12 ↘	8 12 ↘	
Houston Pilots A - 1 & 2 Bravo	15 23 ↘	15 23 ↘	15 23 ↘	15 22 ↘	15 22 ↘	15 22 ↘	15 22 ↘	15 21 ↘	15 21 ↘	15 21 ↘	15 20 ↘	14 20 ↘	14 20 ↘	13 18 ↘	13 20 ↘	13 18 ↘	13 17 ↘	13 17 ↘	12 17 ↘	12 17 ↘	10 16 ↘	10 16 ↘	9 15 ↘	8 14 ↘	8 13 ↘	8 13 ↘

NOTE: This is automated data that may/may not agree with the official BAM thinking that's found on the daily slides. This data should be used as a guide only.

Forecast Discussion

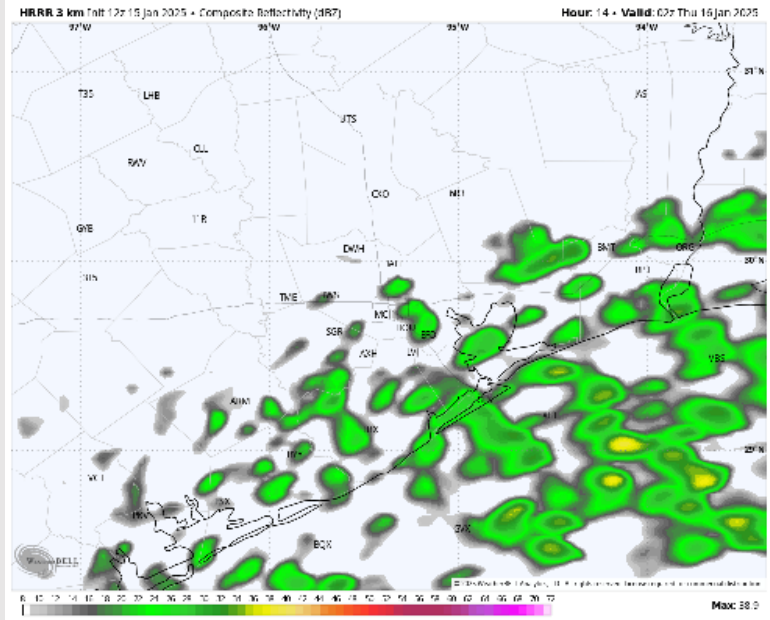
Precip: Widespread showers will continue through 3PM, before becoming more scattered in nature. Scattered (30%) showers are expected to linger through the rest of the day.

Wind: Winds will be out of the NE throughout the day. **N of Morgan's Point:** Winds will be at 3 - 8 kts for the rest of the day. **S of Morgan's Point:** Winds will be at 12 - 18 kts throughout today. **Gusts of up to 20 kts will be in play for Stations S of Morgan's Point for the remainder of the day.**

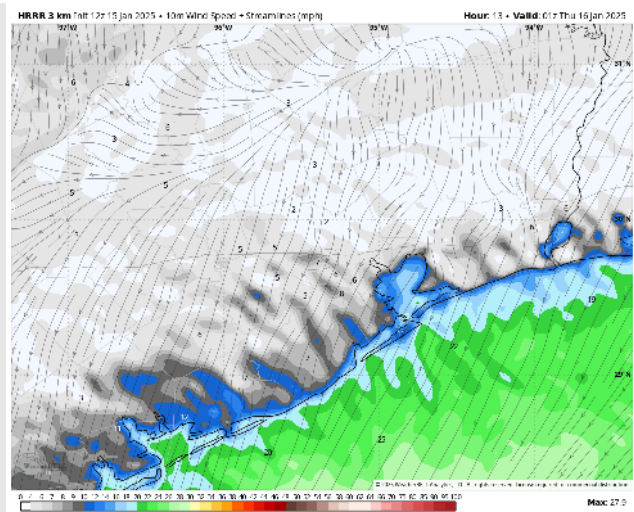
High Temps: **N of Morgan's Point:** Low 40s F. **S of Morgan's Point:** Low to mid 40s F.

Visibility: Not anticipating any fog concerns for today, but visibilities will potentially be reduced below 3 miles under heavy downpours.

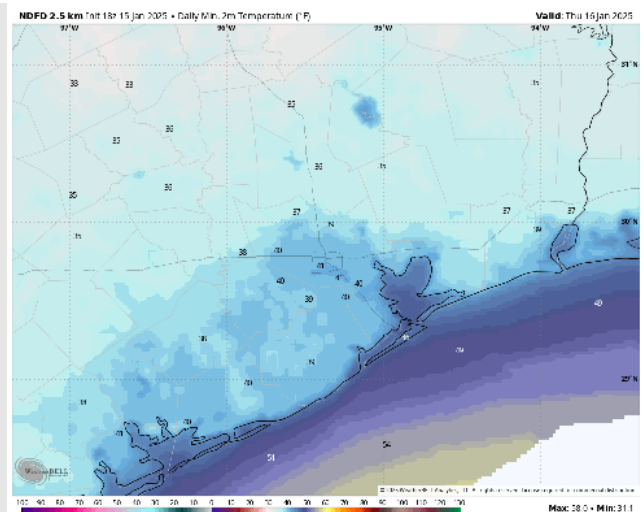
Precip Image: 8 PM CT



Wind Speed:
7 PM CT



Low Temps
THU AM



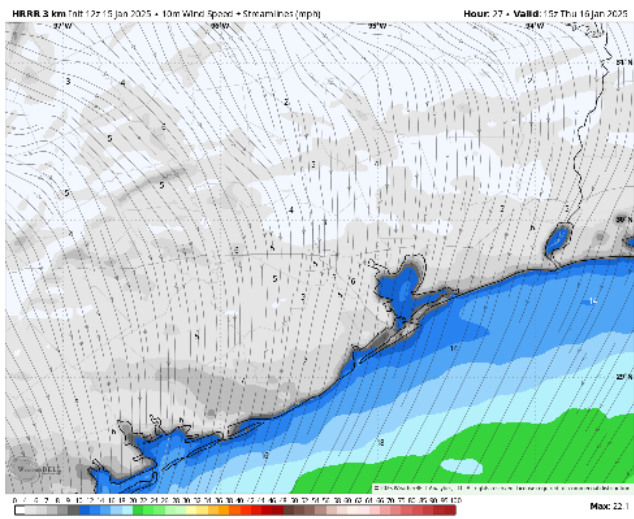
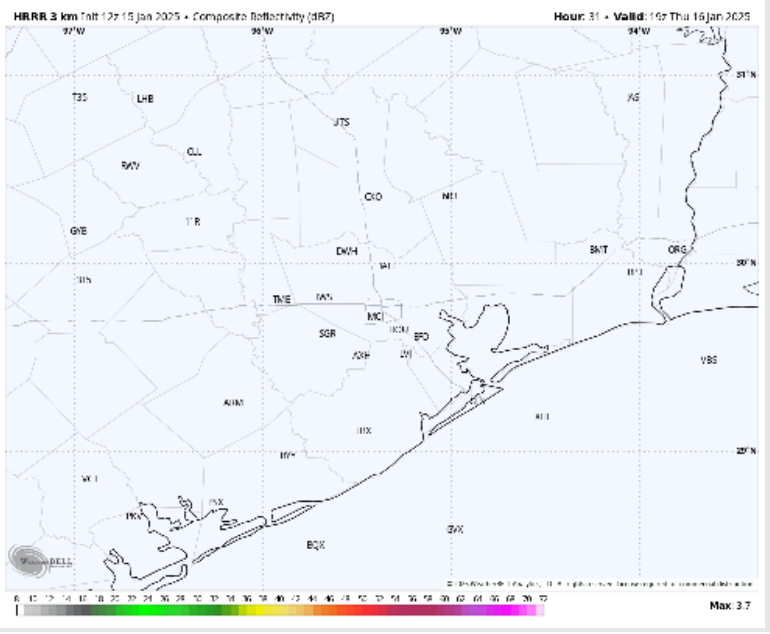
Houston Pilots: THU. 1/16/2025



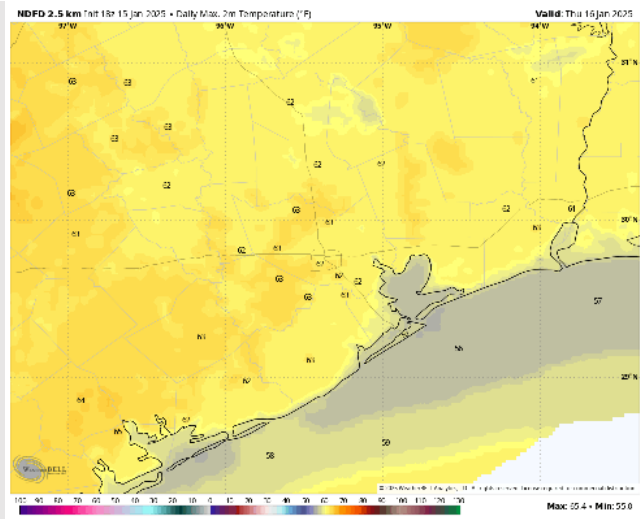
Forecast Discussion

- Precip:** Favoring dry conditions throughout Thursday.
- Wind:** Winds will be generally out of the N / NNW through 5 PM, becoming variable after that time. **N of Morgan's Point:** Winds will be at 2 - 7 kts throughout the day Thursday. **S of Morgan's Point:** Winds will be at 8 - 13 kts, decreasing to 4 - 9 kts after 12PM.
- High Temps:** **N of Morgan's Point:** Low 60 F. **S of Morgan's Point:** High 50s F.
- Visibility:** Not favoring any visibility concerns for Thursday.

Precip Image: 1 PM CT



Wind Speed:
9 AM CT



High Temps
Thursday

Houston Pilots: FRI. 1/17/2025



Forecast Discussion

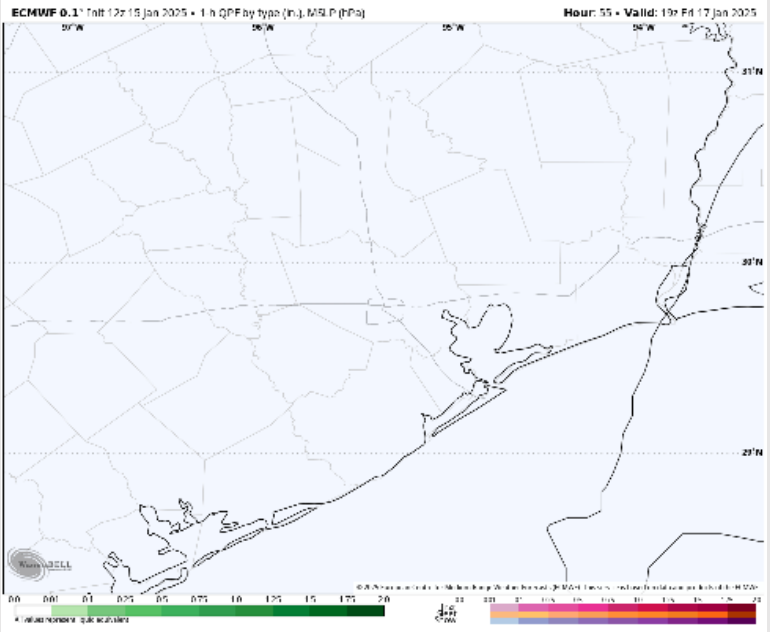
Precip: Favoring dry conditions for Friday.

Wind: Winds will be variable through 8AM before becoming out of the SE for the remainder of Friday. **N of Morgan's Point:** Winds will be at 3 - 8 kts for all of Friday. **S of Morgan's Point:** Winds will be at 3 - 8kts through 10AM before increasing to 10 - 15 kts. **Gusts of up to 20 kts will be possible for all Stations after 1PM.**

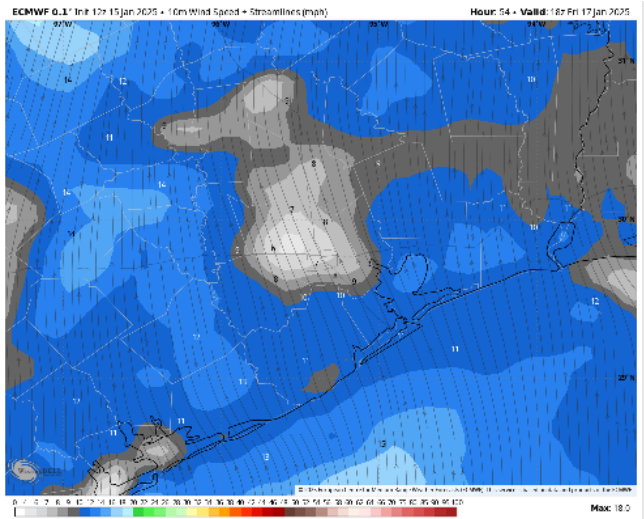
High Temps: **N of Morgan's Point:** Mid to upper 60s F. **S of Morgan's Point:** Mid 60s F.

Visibility: Monitoring a low-end patchy non-sea fog risk for all Stations for Friday.

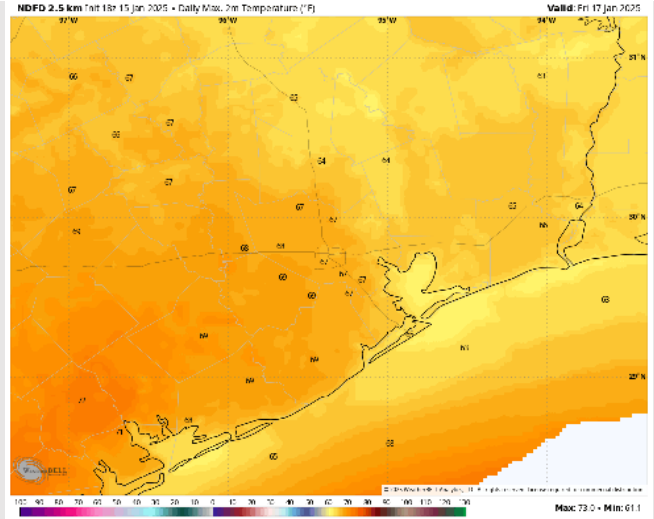
Precip Image: 1 PM CT



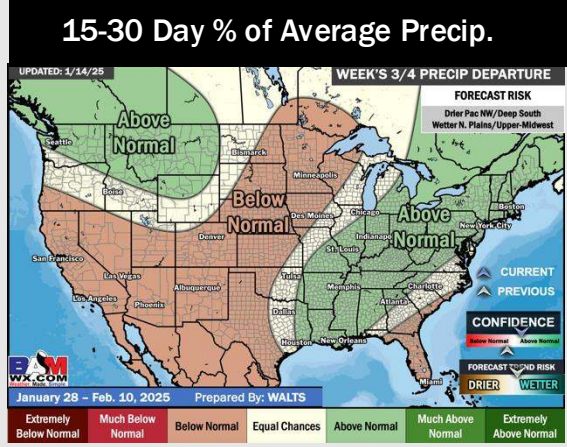
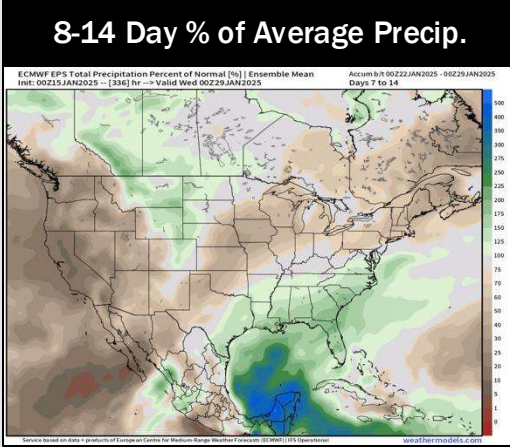
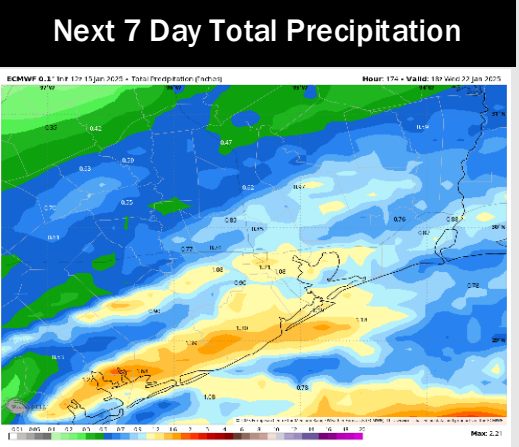
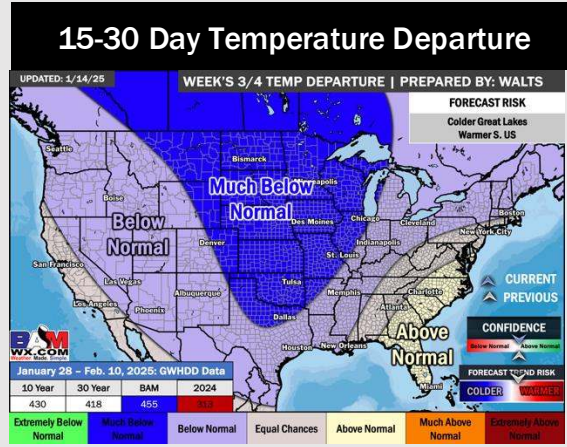
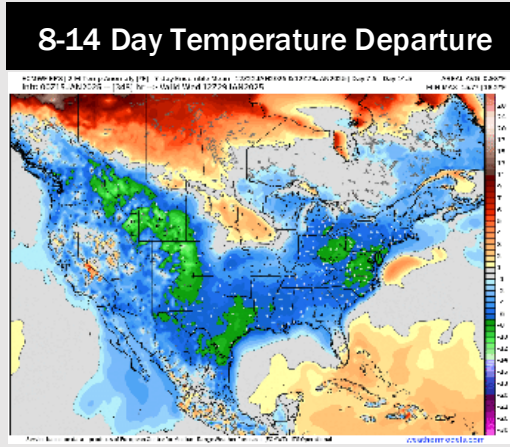
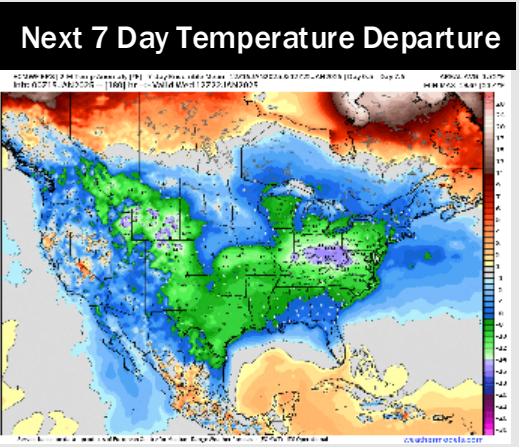
Wind Speed
12 PM CT



High Temps
Friday



Houston Pilots: 1/15/25



- Temps are expected to be below normal for the week 1 timeframe. After today's rain chances, not favoring precipitation until the start of next week.
- Much below normal temperatures and above normal rainfall are expected for week 2.
- Below normal temperatures and slightly above normal precipitation chances are expected for the weeks 3/4 timeframe.