

Houston Pilots Forecast Package



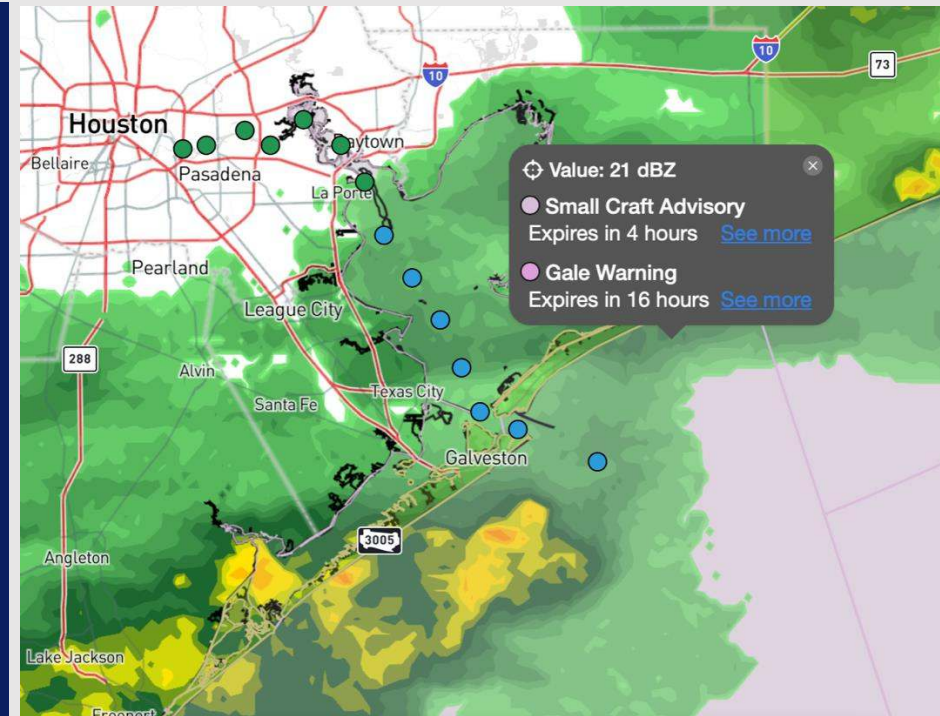
Updated: 1:45 PM CT

Thursday, January 9, 2025

Forecaster: Hope Kleitsch

Weather Headlines

- **Zulu port conditions are in effect until 6AM Friday due to increased wave heights and sustained winds of 34+ kts. See video below and trigger slide for more information!**
[CLICK FOR VIDEO UPDATE](#)
- **Wave heights have reached 6ft at the Boarding Station and will continue to be above 6ft through 6AM FRI. See wave height slide for more details.**
- **No visibility concerns from sea fog are favored over the next 72 hours.**



Current Radar: 1:40 PM CT

As always, please do not hesitate to reach out to us with any forecast questions at **(317)-560-8122**. Press **1** for forecast questions.

You can also access real-time forecast updates and 24/7 meteorological chat assistance on your [Clarity](#) app. Click [here](#) for login assistance.



Houston Pilots Port Trigger Update

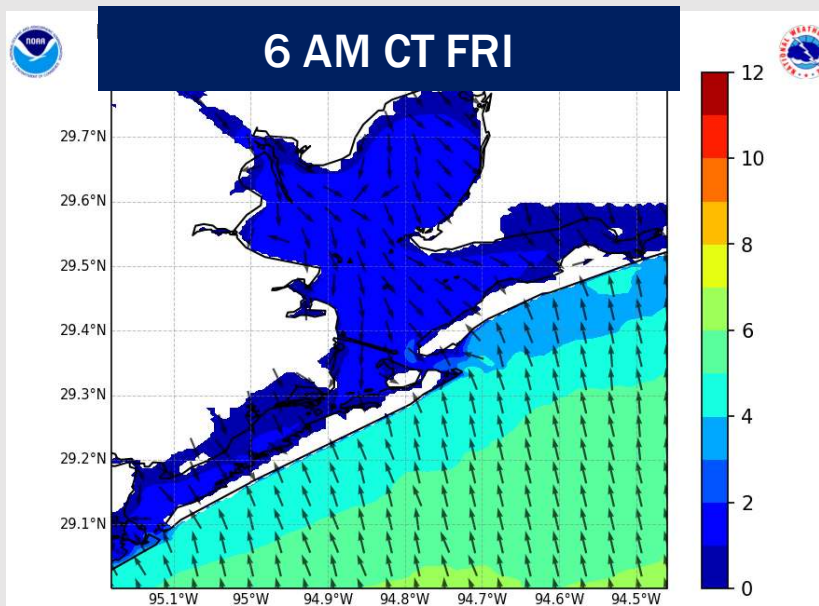
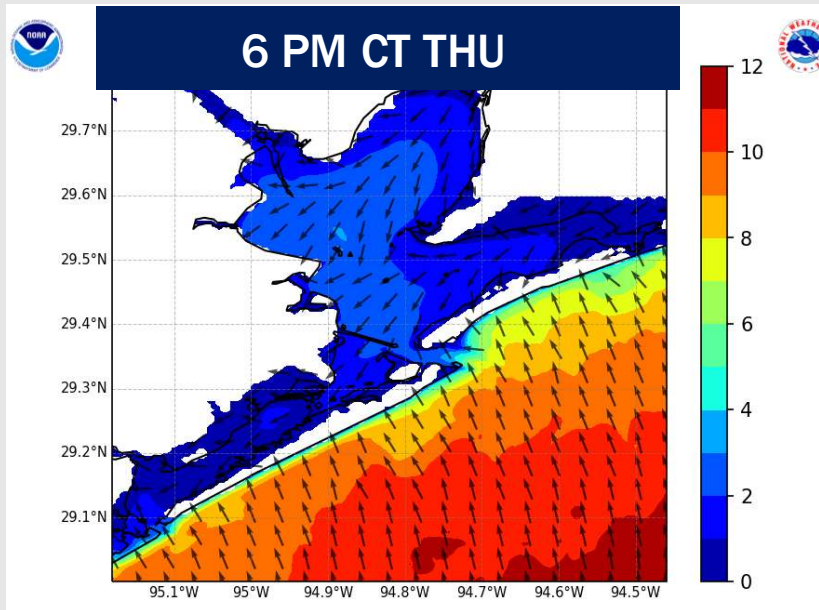


Port Condition	34 KTS+ Sustained Wind Trigger Reached at:	6 Foot Wave Trigger Reached at:	Time Remaining/Trigger Ends At:
Victor	---	---	---
Whiskey	---	---	---
X-Ray	---	---	---
Yankee	---	---	---
Zulu	CURRENT	CURRENT	FRI 6 AM

Port Condition	Trigger Definition	Trigger Reached?
Victor	Hurricane entering/developing in Gulf of Mexico that's a threat to the area	N/A
Whiskey	72 hours prior to predicted sustained winds of 34+ KTS	PAST
X-Ray	48 hours prior to predicted sustained winds of 34+ KTS or 6' wave height	PAST
Yankee	24 hours prior to predicted sustained winds of 34+ KTS or 6' wave height	PAST
Zulu	12 hours prior to predicted sustained winds of 34+ KTS or 6' wave height	YES

NOTES:
 Sustained winds are expected to reach 34+ kts at the Boarding Station, 11/12 and 25/26 from 6 PM THU to 2 AM FRI.
 Wave heights have already reach 6ft at the Boarding Station and will continue to be at 6ft-9ft through 6AM FRI, decreasing after then. See wave height slide for more details.

Wave Height Forecast Update



With the increased winds, wave heights have reached 6ft at the Boarding Station.

Expecting wave heights to peak at 6ft – 9ft by 6PM, holding there through ~12AM FRI.

Wave heights will gradually decrease through the early AM FRI, before dropping below 6ft by 6AM FRI.

Houston Pilots Extended Range Visibility Report



Sunday 1/12/24

Watching for a low-end risk for non-sea fog for Stations N. of Morgan's Point in the AM. Confidence in low.



Monday 1/13/25

No fog concerns for Monday.



Tuesday 1/14/25

No fog concerns for Tuesday.



Chance for Fog

Sunday AM	Low-End
Sunday PM	Unlikely
Monday AM	Unlikely
Monday PM	Unlikely
Tuesday AM	Unlikely
Tuesday PM	Unlikely

Houston Pilots Visibility Chart (miles)



Forecast Confidence



Visibility	Thu 3 pm	Thu 4 pm	Thu 5 pm	Thu 6 pm	Thu 7 pm	Thu 8 pm	Thu 9 pm	Thu 10 pm	Thu 11 pm	Fri 12 am	Fri 1 am	Fri 2 am	Fri 3 am	Fri 4 am	Fri 5 am	Fri 6 am	Fri 7 am	Fri 8 am	Fri 9 am	Fri 10 am	Fri 11 am	Fri 12 pm	Fri 1 pm	Fri 2 pm
Houston Pilots N - 610 Bridge	10	8	2.9	2.9	3.9	4.9	2.9	2.9	2	2.9	4.9	5.9	6.9	8	8	8	10	10	5.9	5.9	6.9	6.9	9	9
Houston Pilots M - Kinder 1	10	10	2.9	2.9	3.9	4.9	2.9	2.9	2	2.9	4.9	5.9	6.9	8	8	8	10	10	5.9	5.9	6.9	6.9	9	10
Houston Pilots L - Greens Bayou	10	10	2.9	2.9	3.9	4.9	2.5	2.9	2	2.9	4.9	5.9	6.9	8	8	8	10	10	5.9	5.9	6.9	6.9	9	10
Houston Pilots K - Shell Crude	10	10	2.9	2.9	3.9	4.9	2.5	2.9	2	2.9	4.9	5.9	6.9	8	8	8	8	10	5.9	5.9	6.9	6.9	9	10
Houston Pilots J - Lynchburg Ferries	10	10	2.9	2.9	3.9	3.9	2.5	2.9	2	3.9	4.9	5.9	6.9	8	8	6.9	8	9	5.9	5.9	6.9	6.9	9	10
Houston Pilots I - Exxon 3	10	10	2.9	2.9	3.9	3.9	2.5	2.9	2	3.9	4.9	5.9	6.9	8	8	6.9	8	9	5.9	5.9	6.9	6.9	9	10
Houston Pilots H - Morgans Point	10	10	2.9	2.9	3.9	3.9	2.5	2.9	2	2.9	4.9	5.9	6.9	8	8	6.9	8	9	5.9	5.9	6.9	7.9	9	10
Houston Pilots G - 75/76	10	8	2.5	3.9	3.9	2.9	2	2.9	2	2.9	3.9	4.9	4.9	4.9	4.9	5.9	6.9	5.9	4.9	5.9	6.9	7.9	9	9
Houston Pilots F - 63/64	10	8	2.5	4.9	3.9	2.9	2	2.9	2	2.5	3.9	4.9	4.9	4.9	4.9	4.9	6.9	5.9	4.9	5.9	6.9	7.9	9	9
Houston Pilots E - 51/52	9	3.9	2.5	4.9	2.9	2.9	1.6	2	2	2	3.9	4.9	4.9	4.9	4.9	4.9	4.9	4.9	3.9	4.9	6.9	6.9	10	9
Houston Pilots D - 37/38	6.9	3.9	2.5	4.9	2.9	2.9	1.1	1.6	1.6	2	3.9	4.9	4.9	4.9	4.9	4.9	4.9	4.9	3.9	4.9	6.9	6.9	10	9
Houston Pilots C - 25/26	6.9	2.9	2.9	3.9	2.9	2.9	1.1	1.6	1.6	2	3.9	4.9	4.9	4.9	4.9	4.9	4.9	4.9	4.9	4.9	6.9	6.9	10	9
Houston Pilots B - 11/12	4.9	2.9	2.9	3.9	2.9	2.9	1.1	1.6	1.6	2	3.9	4.9	4.9	4.9	4.9	4.9	4.9	4.9	4.9	4.9	5.9	6.9	10	10
Houston Pilots A - 1 & 2 Bravo	5.9	2.9	2.9	2.9	3.9	2.9	2	1.6	1.6	2	3.9	3.9	4.9	4.9	4.9	4.9	4.9	4.9	3.9	4.9	5.9	6.9	10	10

NOTE: This is automated data that may/may not agree with the official BAM thinking that's found on the daily slides or special visibility report slides. This data should be used as a guide only

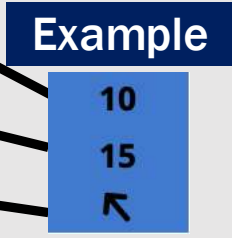
Houston Pilots Wind Chart



Forecast Confidence



Sustained wind 10 Knots
Gusts 15 Knots
Wind from the SE



Wind	Thu 3 pm	Thu 4 pm	Thu 5 pm	Thu 6 pm	Thu 7 pm	Thu 8 pm	Thu 9 pm	Thu 10 pm	Thu 11 pm	Fri 12 am	Fri 1 am	Fri 2 am	Fri 3 am	Fri 4 am	Fri 5 am	Fri 6 am	Fri 7 am	Fri 8 am	Fri 9 am	Fri 10 am	Fri 11 am	Fri 12 pm	Fri 1 pm	Fri 2 pm
Houston Pilots N - 610 Bridge	14 29 ←	15 30 ←	15 31 ←	16 31 ←	15 30 ←	15 31 ←	16 31 ←	16 30 ↓	17 30 ↓	16 29 ↓	16 29 ↓	15 28 ↓	14 26 ↓	13 25 ↓	13 24 ↓	13 23 ↓	12 22 ↓	13 24 ↓	13 24 ↓	13 24 ↓	13 25 ↓	14 26 ↓	13 26 ↓	14 28 ↓
Houston Pilots M - Kinder 1	14 29 ←	15 30 ←	15 31 ←	16 31 ←	15 30 ←	16 31 ←	16 31 ←	16 30 ↓	17 31 ↓	16 29 ↓	16 29 ↓	15 28 ↓	15 26 ↓	13 25 ↓	13 24 ↓	13 23 ↓	12 22 ↓	13 24 ↓	13 24 ↓	13 24 ↓	13 25 ↓	14 26 ↓	13 26 ↓	14 28 ↓
Houston Pilots L - Greens Bayou	15 29 ←	15 29 ←	15 31 ←	15 31 ←	15 30 ←	16 31 ←	16 31 ←	16 30 ↓	17 31 ↓	16 30 ↓	15 29 ↓	15 28 ↓	14 26 ↓	13 25 ↓	13 24 ↓	13 23 ↓	12 22 ↓	13 24 ↓	13 24 ↓	13 24 ↓	13 25 ↓	14 26 ↓	14 26 ↓	14 28 ↓
Houston Pilots K - Shell Crude	15 29 ←	15 30 ←	15 31 ←	16 32 ←	15 30 ←	16 31 ←	16 31 ←	16 30 ↓	17 31 ↓	16 29 ↓	16 29 ↓	15 28 ↓	14 26 ↓	13 25 ↓	13 24 ↓	13 23 ↓	12 22 ↓	13 24 ↓	13 24 ↓	13 24 ↓	14 25 ↓	14 26 ↓	13 26 ↓	14 28 ↓
Houston Pilots J - Lynchburg Ferries	15 29 ←	15 29 ←	16 31 ←	16 31 ←	16 31 ←	16 31 ←	17 32 ←	16 31 ↓	16 31 ↓	15 30 ↓	15 29 ↓	15 28 ↓	14 26 ↓	13 25 ↓	12 24 ↓	12 23 ↓	10 22 ↓	13 23 ↓	13 24 ↓	13 24 ↓	13 25 ↓	14 26 ↓	15 26 ↓	14 28 ↓
Houston Pilots I - Exxon 3	17 28 ←	17 29 ←	20 31 ←	20 32 ←	21 31 ←	22 32 ←	22 32 ←	22 31 ↓	23 31 ↓	23 30 ↓	22 29 ↓	22 29 ↓	22 26 ↓	20 25 ↓	18 25 ↓	17 23 ↓	17 22 ↓	16 24 ↓	16 24 ↓	16 23 ↓	15 25 ↓	16 25 ↓	15 25 ↓	15 26 ↓
Houston Pilots H - Morgans Point	17 29 ←	17 30 ←	20 31 ←	21 32 ←	21 32 ←	22 32 ←	22 33 ←	22 32 ↓	23 32 ↓	22 31 ↓	22 29 ↓	21 26 ↓	20 25 ↓	18 24 ↓	17 23 ↓	16 22 ↓	15 22 ↓	16 23 ↓	16 24 ↓	15 23 ↓	15 25 ↓	16 25 ↓	15 25 ↓	15 26 ↓
Houston Pilots G - 75/76	20 31 ←	20 32 ←	22 35 ←	24 36 ←	24 36 ←	24 35 ←	24 36 ←	24 35 ↓	25 36 ↓	24 33 ↓	24 32 ↓	24 31 ↓	22 29 ↓	21 28 ↓	20 26 ↓	20 25 ↓	18 26 ↓	18 26 ↓	18 26 ↓	17 28 ↓	17 28 ↓	17 26 ↓	16 26 ↓	17 28 ↓
Houston Pilots F - 63/64	21 33 ←	22 33 ←	23 35 ←	24 36 ←	24 36 ←	24 35 ←	24 36 ←	24 35 ↓	25 36 ↓	25 33 ↓	24 32 ↓	24 31 ↓	23 29 ↓	21 28 ↓	21 26 ↓	20 25 ↓	20 26 ↓	18 26 ↓	18 26 ↓	17 28 ↓	17 28 ↓	17 28 ↓	17 26 ↓	17 28 ↓
Houston Pilots E - 51/52	22 33 ←	23 33 ←	25 35 ←	26 37 ←	25 37 ←	25 36 ←	24 36 ←	24 35 ↓	24 36 ↓	24 33 ↓	24 32 ↓	24 31 ↓	22 29 ↓	21 28 ↓	20 28 ↓	20 25 ↓	20 26 ↓	18 26 ↓	20 26 ↓	20 28 ↓	18 28 ↓	17 28 ↓	17 28 ↓	17 26 ↓
Houston Pilots D - 37/38	22 33 ←	22 35 ←	24 36 ←	25 37 ←	25 37 ←	24 36 ←	24 36 ←	24 35 ↓	24 36 ↓	24 33 ↓	24 32 ↓	24 31 ↓	22 29 ↓	21 28 ↓	20 28 ↓	20 25 ↓	20 26 ↓	18 26 ↓	20 26 ↓	20 28 ↓	18 28 ↓	18 28 ↓	18 28 ↓	17 28 ↓
Houston Pilots C - 25/26	22 33 ←	22 35 ←	24 36 ←	24 37 ←	24 37 ←	24 37 ←	24 36 ←	23 36 ↓	24 36 ↓	23 33 ↓	23 32 ↓	22 31 ↓	22 29 ↓	20 28 ↓	20 28 ↓	20 26 ↓	18 26 ↓	20 26 ↓	20 28 ↓	20 28 ↓	18 29 ↓	20 28 ↓	18 28 ↓	20 28 ↓
Houston Pilots B - 11/12	22 32 ←	22 32 ←	23 35 ←	23 36 ←	24 37 ←	24 36 ←	23 36 ←	22 36 ↓	22 36 ↓	22 33 ↓	22 32 ↓	21 31 ↓	20 30 ↓	18 28 ↓	18 26 ↓	17 25 ↓	17 26 ↓	17 26 ↓	18 26 ↓	18 26 ↓	18 28 ↓	18 28 ↓	18 28 ↓	18 28 ↓
Houston Pilots A - 1 & 2 Bravo	24 35 ←	25 37 ←	26 37 ←	26 38 ←	26 38 ←	28 40 ←	26 40 ←	26 39 ↓	26 38 ↓	25 35 ↓	24 33 ↓	24 33 ↓	23 32 ↓	22 30 ↓	21 29 ↓	20 29 ↓	20 28 ↓	20 28 ↓	21 29 ↓	21 30 ↓	21 31 ↓	21 31 ↓	20 31 ↓	22 32 ↓

NOTE: This is automated data that may/may not agree with the official BAM thinking that's found on the daily slides. This data should be used as a guide only.

Houston Pilots: THU. 1/9/2025



Forecast Discussion

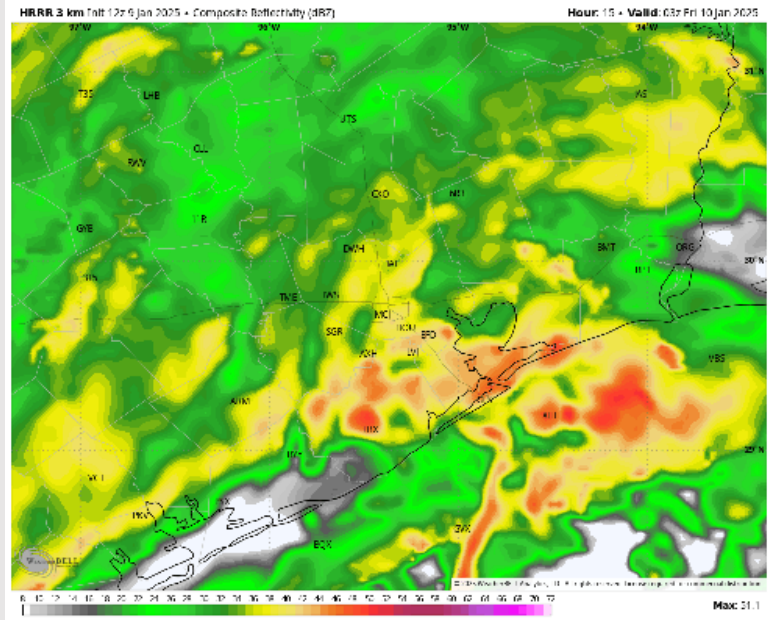
Precip: Scattered showers become more widespread in nature by 4PM. Heavy downpours arrive after 8PM. **Thunderstorms are not favored, but strong winds and wind gusts will accompany this system.**

Wind: Winds will be out of the E/NE throughout the rest of the day. **N of Morgan's Point:** Winds will be at 12 – 17 kts for the remainder of the day. **Wind gusts of 25 – 30 kts in play for Stations N of Morgan's Point after 3 PM as well. S of Morgan's Point:** Winds will be at 20 – 30 kts after 6 PM. **Wind gusts of 20-25 kts in play S of Morgan's Point, gradually increasing to 35 – 40 kts by ~6 PM. Sustained winds may briefly reach 34+ kts and gusts may briefly reach 45+ kts at the Boarding Station, 11/12 and 25/26 from 6 PM THU through 2 AM FRI, check Port Trigger slide for more details!**

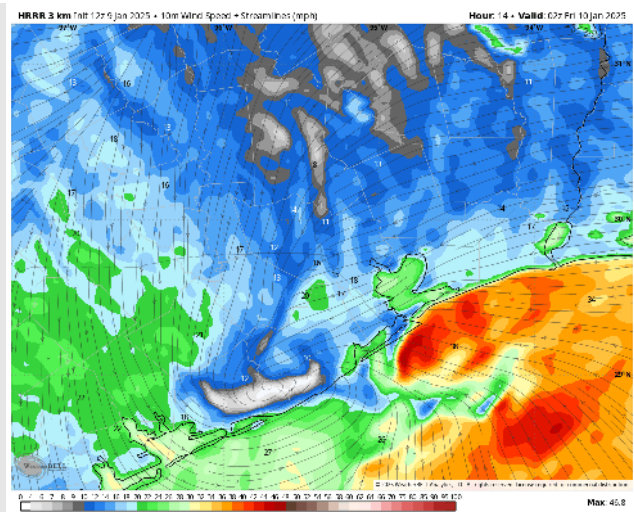
Low Temps: **N of Morgan's Point:** Upper 30s F. **S of Morgan's Point:** Upper 30s to low 40s F.

Visibility: Not anticipating any fog concerns for today, but visibilities will be reduced below 2 miles under heavy downpours after 8PM.

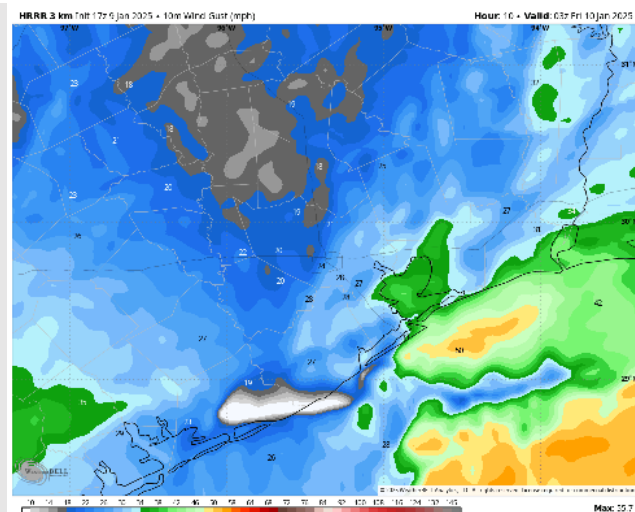
Precip Image: 9 PM CT



**Wind Speed:
8 PM CT**



**Wind Gusts
~6PM – 11PM**



Houston Pilots: FRI. 1/10/2025



Forecast Discussion

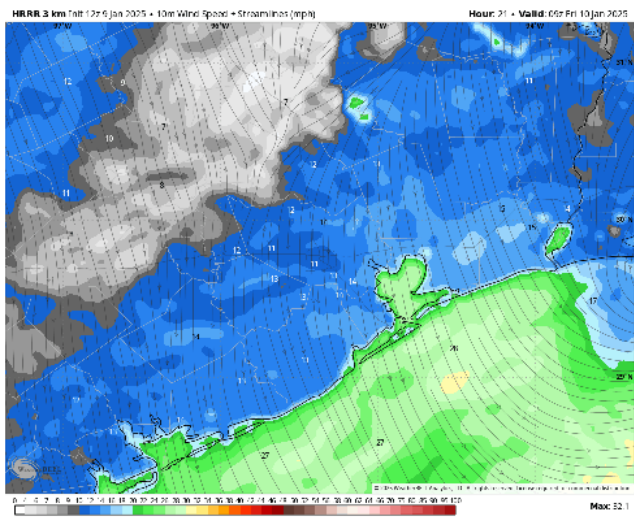
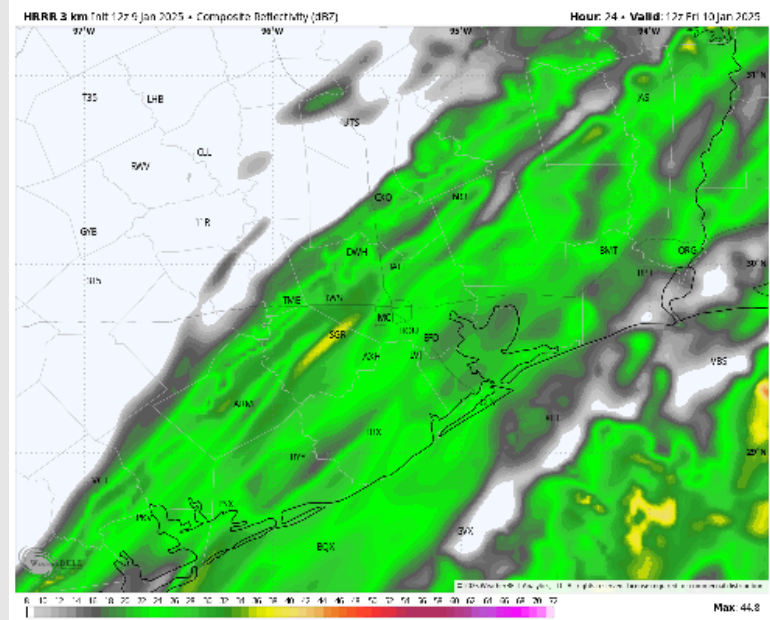
Precip: Favoring widespread showers and downpours (100%) from 12AM – 7AM, before chances become more scattered (50%) and lighter through 11AM. After this point, favoring dry conditions for the rest of the day.

Wind: Winds will be generally out of the NW through the day. **N of Morgan's Point:** Winds will be 8 – 13 kts for the day. **S of Morgan's Point:** Winds will be at 17 – 22 kts throughout Friday. **Gusts of up to 20 – 25 kts will be in play for all Stations through the day.**

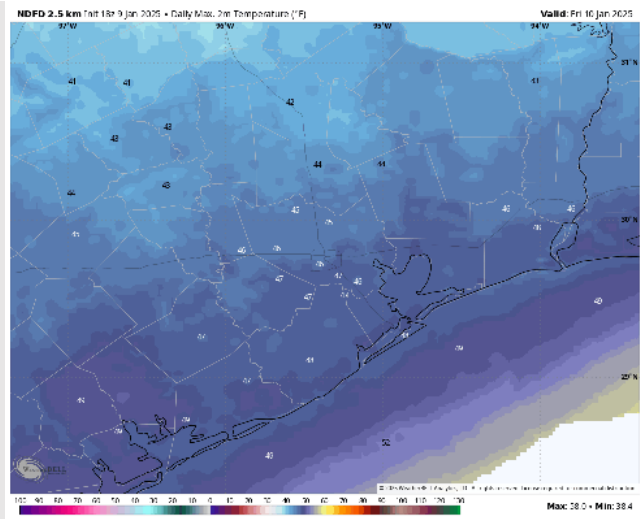
High Temps: **N of Morgan's Point:** Mid to upper 40s F. **S of Morgan's Point:** Lower to upper 40s F.

Visibility: No fog concerns for Friday, however visibilities may be reduced to 3-5 miles due to heavy downpours in the AM.

Precip Image: 6 AM CT



Wind Speed:
3 AM CT



High Temps
Friday

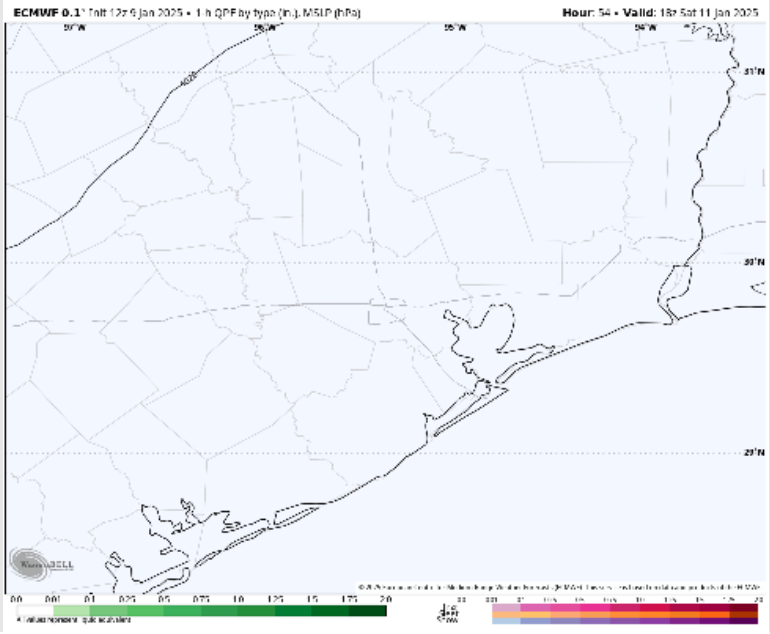
Houston Pilots: SAT. 1/11/2025



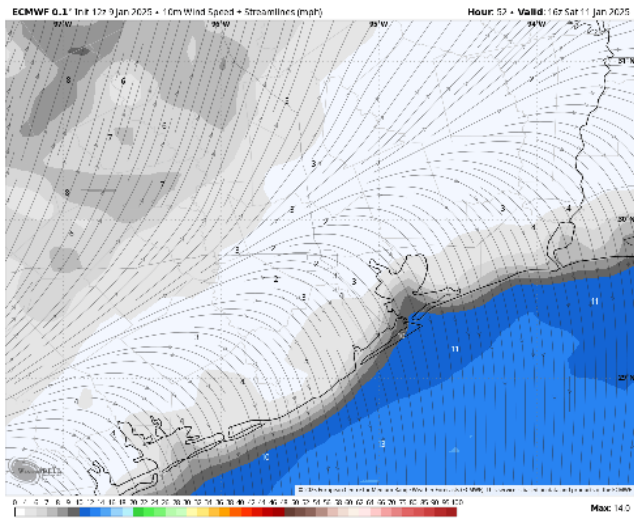
Forecast Discussion

- Precip:** Favoring dry conditions for Saturday.
- Wind:** Winds will be out of the N/NW through 12PM, becoming variable after then, before settling out of the SE by 4PM. **N of Morgan's Point:** Winds will be at 3 - 7 kts throughout Saturday. **S of Morgan's Point:** Winds will be at 8 - 13 kts through 11AM before decreasing to 6 - 10 kts for the remainder of Saturday.
- High Temps:** **N of Morgan's Point:** Near 50 F. **S of Morgan's Point:** Lower 50s F.
- Visibility:** No visibility concerns for Saturday.

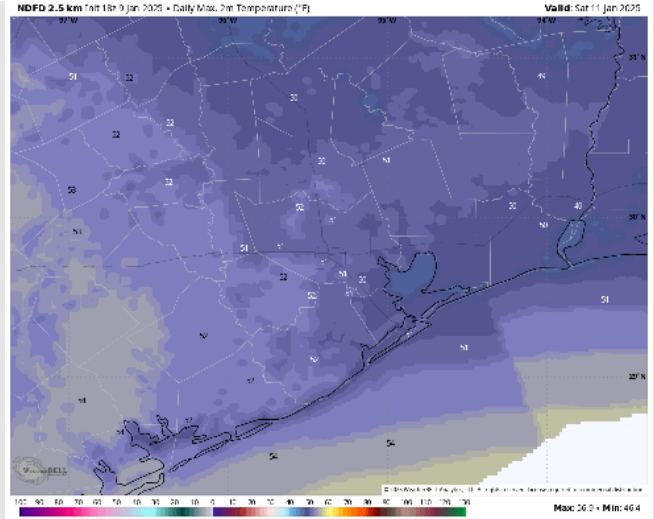
Precip Image: 12 PM CT



Wind Speed
10 AM CT



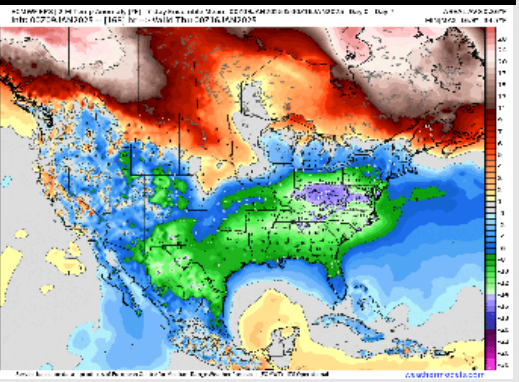
High Temps
Saturday



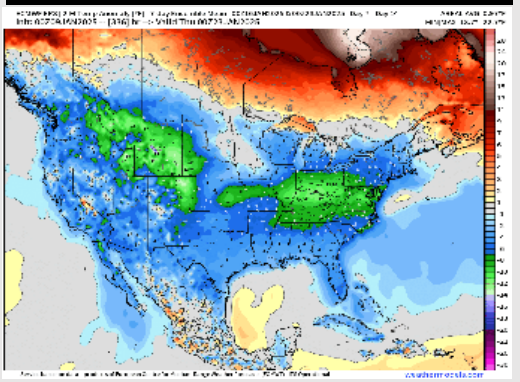
Houston Pilots: 1/9/25



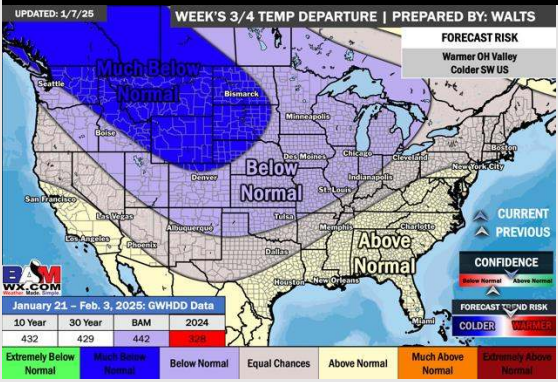
Next 7 Day Temperature Departure



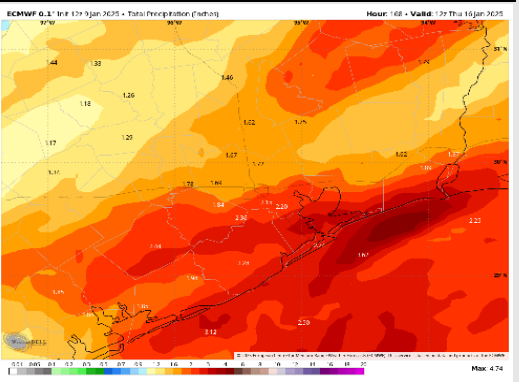
8-14 Day Temperature Departure



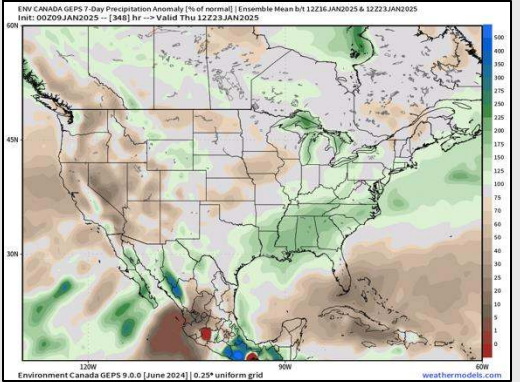
15-30 Day Temperature Departure



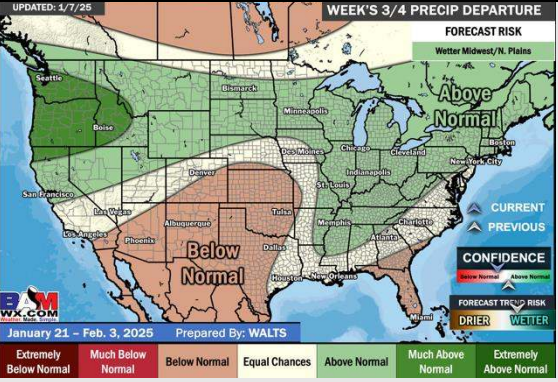
Next 7 Day Total Precipitation



8-14 Day % of Average Precip.



15-30 Day % of Average Precip.



- Temps are expected to be much below normal for the week 1 timeframe. Rain favored through FRI with rain chances again early next week.
- Below normal temperatures and above normal rainfall are expected for week 2.
- Above normal temperatures and near normal precipitation chances are expected for the weeks 3/4 timeframe.