

Houston Pilots Forecast Package



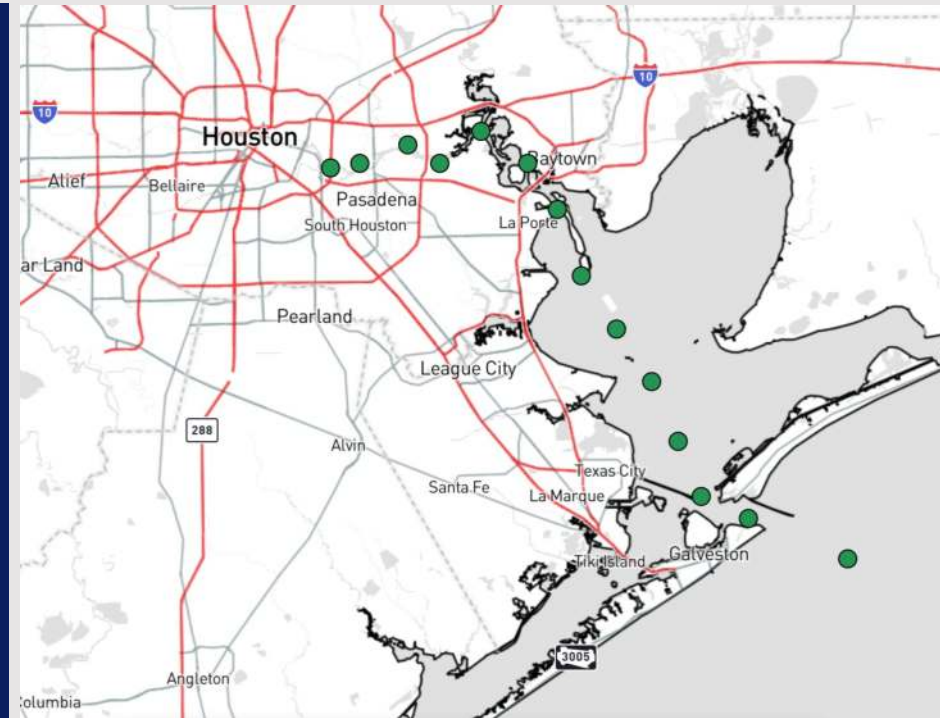
Updated: 1:00 AM CT

Thursday, January 2, 2025

Forecaster: John Kemper

Weather Headlines

- Isolated pockets of drizzle will be possible this afternoon into Friday AM.
- Outside of localized fog risks Saturday AM, no major visibility concerns through Weekend.
- Keeping an eye on Sunday for Severe Storm Risks.



Current Radar: 12:55 AM CT

As always, please do not hesitate to reach out to us with any forecast questions at **(317)-560-8122**. Press 1 for forecast questions.

You can also access real-time forecast updates and 24/7 meteorological chat assistance on your [Clarity](#) app. Click [here](#) for login assistance.



Houston Pilots Extended Range Visibility Report



Sunday 1/5/24

No fog concerns for Sunday.

Forecast Confidence



Monday 1/6/25

No fog concerns for Monday.

Forecast Confidence



Tuesday 1/7/25

No fog concerns for Tuesday.

Forecast Confidence



Chance for Fog

Sunday AM	Unlikely
Sunday PM	Unlikely
Monday AM	Unlikely
Monday PM	Unlikely
Tuesday AM	Unlikely
Tuesday PM	Unlikely

Houston Pilots Visibility Chart (miles)



Forecast Confidence



Visibility	Thu 2 am	Thu 3 am	Thu 4 am	Thu 5 am	Thu 6 am	Thu 7 am	Thu 8 am	Thu 9 am	Thu 10 am	Thu 11 am	Thu 12 pm	Thu 1 pm	Thu 2 pm	Thu 3 pm	Thu 4 pm	Thu 5 pm	Thu 6 pm	Thu 7 pm	Thu 8 pm	Thu 9 pm	Thu 10 pm	Thu 11 pm	Fri 12 am	Fri 1 am
Houston Pilots N - 610 Bridge	10	10	10	10	10	10	10	10	10	10	10	10	10	10	10	10	10	9	9	9	8	5.9	4.9	3.9
Houston Pilots M - Kinder 1	10	10	10	10	10	10	10	10	10	10	10	10	10	10	10	10	10	9	9	9	8	5.9	4.9	3.9
Houston Pilots L - Greens Bayou	10	10	10	10	10	10	10	10	10	10	10	10	10	10	10	10	10	9	9	9	8	5.9	4.9	3.9
Houston Pilots K - Shell Crude	10	10	10	10	10	10	10	10	10	10	10	10	10	10	10	10	10	9	9	9	8	5.9	4.9	3.9
Houston Pilots J - Lynchburg Ferries	10	10	10	10	10	10	10	10	10	10	10	10	10	10	10	10	10	9	9	9	8	5.9	4.9	3.9
Houston Pilots I - Exxon 3	10	10	10	10	10	10	10	10	10	10	10	10	10	10	10	10	10	9	10	9	8	5.9	4.9	3.9
Houston Pilots H - Morgans Point	10	10	10	10	10	10	10	10	10	10	10	10	10	10	10	10	10	9	9	7.9	8	5.9	4.9	3.9
Houston Pilots G - 75/76	10	10	10	10	10	10	10	10	10	10	10	10	10	10	10	10	7.9	6.9	6.9	6.9	5.9	4.9	4.9	9
Houston Pilots F - 63/64	10	10	10	10	10	10	10	10	10	10	10	10	10	10	10	10	6.9	6.9	6.9	6.9	5.9	4.9	4.9	9
Houston Pilots E - 51/52	10	10	10	10	10	10	10	10	10	10	10	10	10	10	10	10	6.9	6.9	6.9	6.9	5.9	4.9	4.9	9
Houston Pilots D - 37/38	10	10	10	10	10	10	10	10	10	10	10	10	10	10	10	10	6.9	6.9	6.9	6.9	5.9	4.9	4.9	9
Houston Pilots C - 25/26	10	10	10	10	10	10	10	10	10	10	10	10	10	10	10	9	6.9	6.9	6.9	6.9	5.9	4.9	4.9	9
Houston Pilots B - 11/12	10	10	10	10	10	10	10	10	10	10	10	10	10	10	10	9	6.9	6.9	6.9	6.9	5.9	4.9	4.9	9
Houston Pilots A - 1 & 2 Bravo	10	10	10	10	10	10	10	10	10	10	10	10	10	10	10	9	6.9	6.9	6.9	6.9	6.9	4.9	4.9	9

NOTE: This is automated data that may/may not agree with the official BAM thinking that's found on the daily slides or special visibility report slides. This data should be used as a guide only

Houston Pilots Wind Chart



Forecast Confidence

Above Normal Below Normal

Sustained wind 10 Knots

Gusts 15 Knots

Wind from the SE

Example

10
15
↙

Wind	Thu 2 am	Thu 3 am	Thu 4 am	Thu 5 am	Thu 6 am	Thu 7 am	Thu 8 am	Thu 9 am	Thu 10 am	Thu 11 am	Thu 12 pm	Thu 1 pm	Thu 2 pm	Thu 3 pm	Thu 4 pm	Thu 5 pm	Thu 6 pm	Thu 7 pm	Thu 8 pm	Thu 9 pm	Thu 10 pm	Thu 11 pm	Fri 12 am	Fri 1 am
Houston Pilots N - 610 Bridge	3 8 ←	3 9 ←	5 9 ←	5 10 ←	6 10 ←	6 12 ←	6 12 ←	6 10 ←	6 12 ←	6 12 ←	6 13 ←	6 13 ←	6 13 ←	6 13 ←	6 13 ←	6 13 ←	6 10 ←	5 10 ←	5 9 ←	3 9 ←	3 8 ←	3 8 ←	3 8 ←	3 8 ←
Houston Pilots M - Kinder 1	3 8 ←	5 9 ←	5 9 ←	5 10 ←	6 10 ←	6 12 ←	6 12 ←	6 10 ←	6 12 ←	6 12 ←	6 13 ←	6 13 ←	6 13 ←	6 13 ←	6 13 ←	6 13 ←	6 10 ←	5 10 ←	5 9 ←	3 9 ←	3 8 ←	3 8 ←	3 8 ←	3 8 ←
Houston Pilots L - Greens Bayou	3 8 ←	5 9 ←	5 9 ←	5 10 ←	6 10 ←	6 12 ←	6 12 ←	6 10 ←	6 12 ←	6 12 ←	6 13 ←	6 13 ←	6 13 ←	6 13 ←	6 13 ←	6 13 ←	6 10 ←	5 10 ←	5 9 ←	5 9 ←	3 8 ←	3 8 ←	3 8 ←	3 8 ←
Houston Pilots K - Shell Crude	5 9 ←	5 9 ←	5 9 ←	6 10 ←	6 10 ←	6 12 ←	6 12 ←	6 12 ←	6 12 ←	6 12 ←	6 13 ←	7 7 ←	7 7 ←	7 13 ←	7 13 ←	7 13 ←	6 13 ←	6 10 ←	6 9 ←	5 9 ←	5 8 ←	3 8 ←	3 8 ←	3 8 ←
Houston Pilots J - Lynchburg Ferries	3 8 ←	3 9 ←	5 9 ←	5 10 ←	5 10 ←	6 10 ←	6 12 ←	6 10 ←	6 12 ←	6 12 ←	6 13 ←	6 13 ←	6 13 ←	6 13 ←	6 13 ←	6 13 ←	6 10 ←	5 9 ←	5 9 ←	3 8 ←	3 8 ←	3 7 ←	3 7 ←	3 8 ←
Houston Pilots I - Exxon 3	8 10 ←	8 12 ←	8 12 ←	8 12 ←	8 13 ←	8 13 ←	9 13 ←	8 13 ←	8 13 ←	8 13 ←	8 13 ←	8 14 ←	8 14 ←	8 14 ←	8 14 ←	8 14 ←	8 13 ←	8 13 ←	8 12 ←	8 12 ←	7 10 ←	7 10 ←	7 9 ←	6 9 ←
Houston Pilots H - Morgans Point	8 12 ←	8 12 ←	8 12 ←	8 13 ←	8 13 ←	9 14 ←	9 13 ←	8 13 ←	8 14 ←	8 14 ←	8 14 ←	8 14 ←	8 15 ←	8 15 ←	8 14 ←	8 14 ←	8 13 ←	8 13 ←	8 12 ←	8 12 ←	7 10 ←	7 10 ←	6 9 ←	6 9 ←
Houston Pilots G - 75/76	10 14 ←	10 14 ←	10 14 ←	10 15 ←	10 16 ←	12 16 ←	10 16 ←	10 16 ←	10 16 ←	10 16 ←	9 15 ←	8 15 ←	8 16 ←	8 16 ←	9 16 ←	9 16 ←	9 14 ←	9 14 ←	9 14 ←	8 13 ←	8 13 ←	8 12 ←	8 12 ←	8 10 ←
Houston Pilots F - 63/64	10 14 ←	10 14 ←	10 15 ←	10 15 ←	12 16 ←	12 16 ←	12 16 ←	12 16 ←	10 16 ←	10 16 ←	9 16 ←	9 16 ←	8 16 ←	8 16 ←	9 16 ←	9 15 ←	9 14 ←	9 14 ←	9 14 ←	8 13 ←	8 13 ←	8 12 ←	8 12 ←	8 12 ←
Houston Pilots E - 51/52	10 14 ←	10 15 ←	10 15 ←	10 15 ←	12 16 ←	12 16 ←	12 16 ←	12 17 ←	12 17 ←	10 17 ←	10 17 ←	10 16 ←	9 16 ←	9 16 ←	9 16 ←	10 15 ←	10 14 ←	10 14 ←	9 14 ←	9 14 ←	9 14 ←	8 13 ←	8 12 ←	8 12 ←
Houston Pilots D - 37/38	10 15 ←	10 15 ←	10 15 ←	10 15 ←	10 16 ←	12 16 ←	12 16 ←	12 17 ←	12 17 ←	10 17 ←	10 17 ←	10 17 ←	10 17 ←	10 17 ←	10 17 ←	10 16 ←	10 15 ←	10 15 ←	9 15 ←	9 14 ←	9 14 ←	8 13 ←	8 12 ←	8 12 ←
Houston Pilots C - 25/26	10 15 ←	10 15 ←	10 15 ←	10 15 ←	10 16 ←	10 16 ←	10 16 ←	12 17 ←	12 17 ←	12 17 ←	10 17 ←	10 17 ←	10 17 ←	10 17 ←	10 17 ←	10 16 ←	10 15 ←	9 15 ←	9 14 ←	9 14 ←	9 13 ←	8 13 ←	8 12 ←	8 12 ←
Houston Pilots B - 11/12	9 15 ←	9 15 ←	9 15 ←	9 15 ←	10 16 ←	10 16 ←	10 16 ←	10 17 ←	10 17 ←	12 17 ←	12 17 ←	10 17 ←	10 17 ←	10 17 ←	10 17 ←	10 16 ←	10 15 ←	9 15 ←	9 15 ←	8 14 ←	8 13 ←	8 13 ←	8 12 ←	7 12 ←
Houston Pilots A - 1 & 2 Bravo	13 17 ←	12 17 ←	12 16 ←	12 17 ←	12 17 ←	12 17 ←	13 17 ←	13 18 ←	13 18 ←	13 20 ←	13 20 ←	12 18 ←	12 18 ←	12 18 ←	12 18 ←	12 17 ←	12 17 ←	12 17 ←	12 16 ←	10 16 ←	10 16 ←	10 15 ←	9 14 ←	9 13 ←

NOTE: This is automated data that may/may not agree with the official BAM thinking that's found on the daily slides. This data should be used as a guide only.

Houston Pilots: THU. 1/2/2025



Forecast Discussion

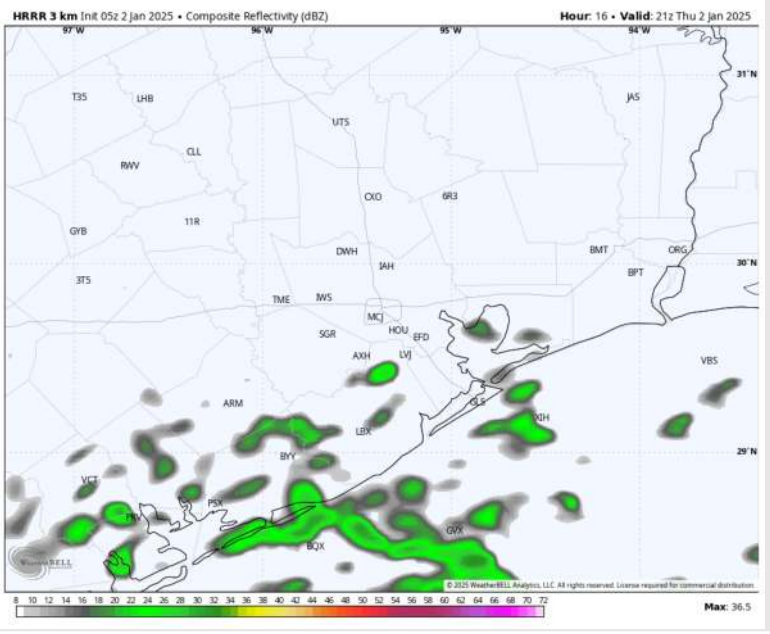
Precip: Isolated pockets of drizzle (20%) possible for all Stations after 1PM.

Wind: Winds will be out of the E/NE throughout the day. **N of Morgan's Point:** Winds will be at 3 – 8 kts throughout the day. **S of Morgan's Point:** Winds will be at 9 – 14 kts, decreasing to 3 – 8 kts after 1 PM. **Wind gusts of 15 - 20 kts in play for Stations S of Morgan's Point through 1 PM.**

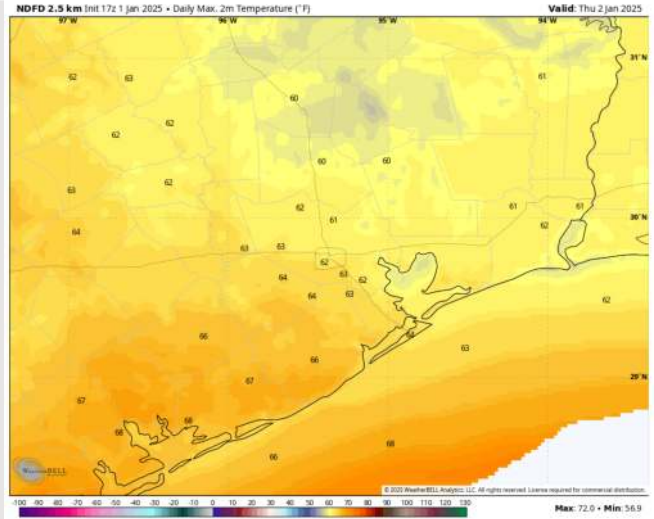
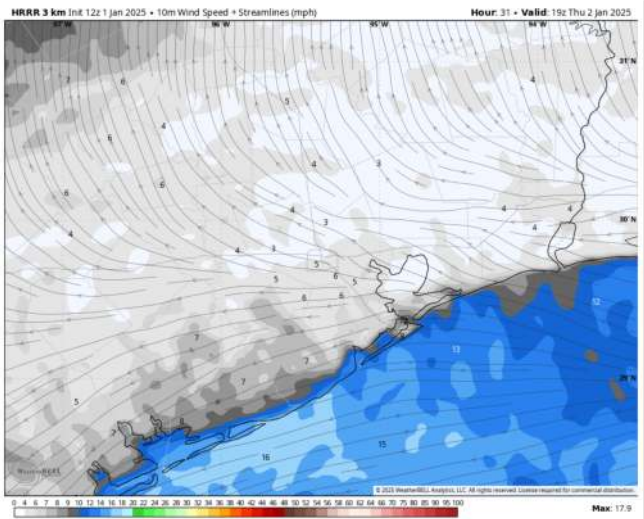
High Temps: **N of Morgan's Point:** Low 60s F. **S of Morgan's Point:** Low to Mid 60s F.

Visibility: Due to drizzle, reduced visibilities of 3 - 5 miles can't be ruled out for the 610 Bridge after 10PM.

Precip Image: 3 PM CT



Wind Speed 1 PM CT



High Temps Today

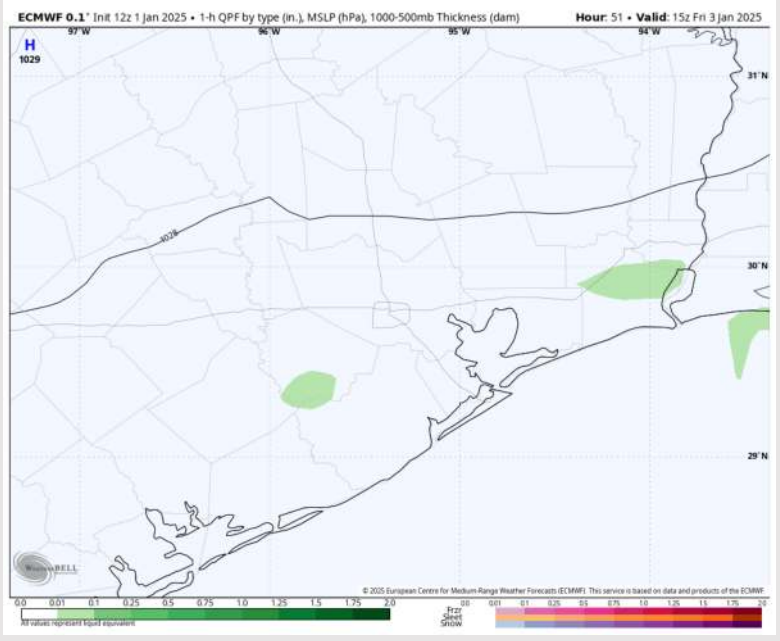
Houston Pilots: FRI. 1/3/2025



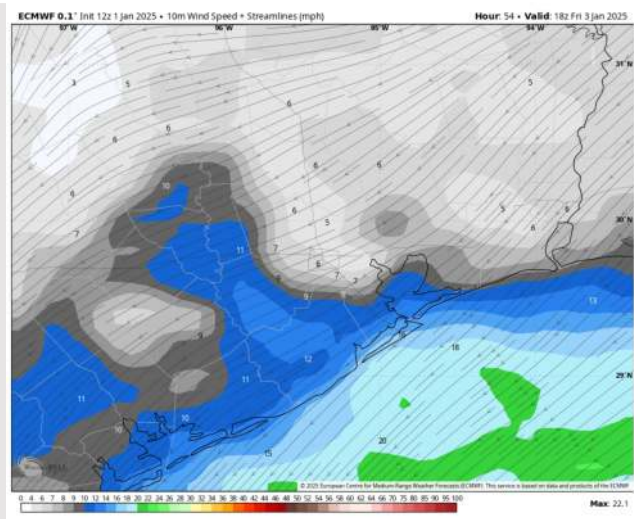
Forecast Discussion

- Precip:** Isolated showers (20%) will be possible from 3AM – 12PM.
- Wind:** Winds will be out of the E/NE throughout the day. **N of Morgan's Point:** Winds will be at 3 – 8 kts throughout the day Friday. **S of Morgan's Point:** Winds will be at 10 – 14 kts through 6PM before decreasing to 7 – 10 kts. **Wind gusts of 15 - 20 kts in play for the Boarding Station for all of Friday.**
- High Temps:** **N of Morgan's Point:** Mid to upper 60s F. **S of Morgan's Point:** Low to Mid 60s F
- Visibility:** Patchy fog risks should remain north of all stations. However, a few pockets of reduced visibility of 2-4 miles will be possible thanks to isolated drizzle through the AM for stations N of Morgan's Point.

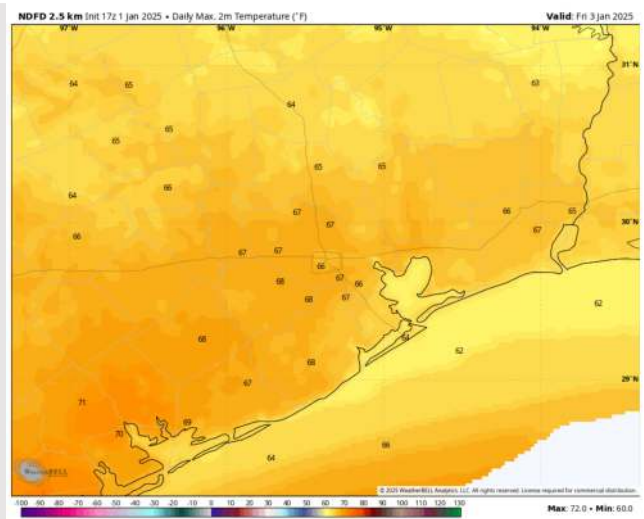
Precip Image: 9 AM CT



Wind Speed:
12 PM CT



High Temps
Friday



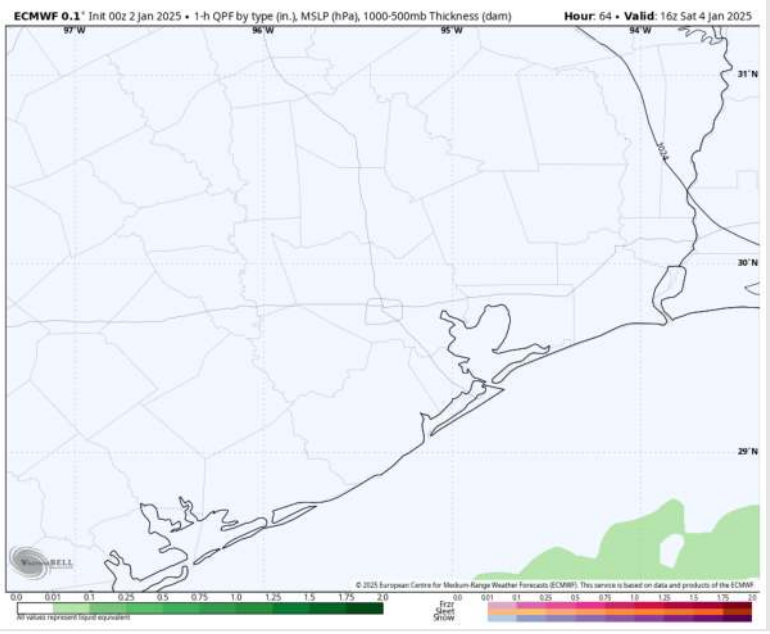
Houston Pilots: SAT. 1/4/2025



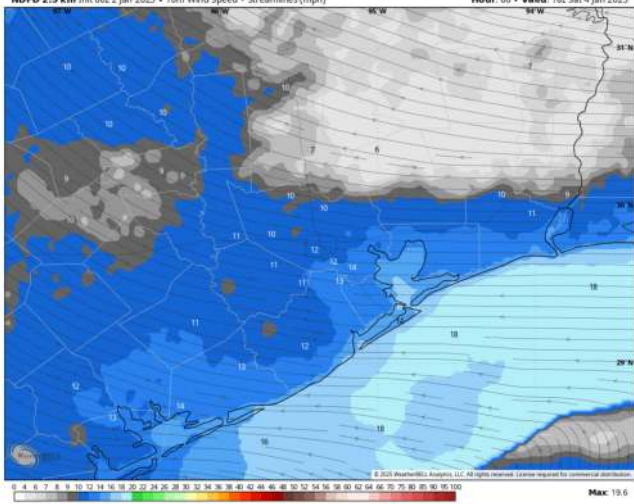
Forecast Discussion

- Precip:** Favoring dry conditions for Saturday.
- Wind:** Winds will be out of the E / ESE through the entire day.
N of Morgan's Point: Winds will be 5 – 10 kts throughout Saturday.
S of Morgan's Point: Winds will be at 10 – 15 kts for the entire day.
- High Temps:** **N of Morgan's Point:** Mid to upper 60s F. **S of Morgan's Point:** Mid 60's.
- Visibility:** Watching for a very localized sea fog risks for all stations Saturday AM. Confidence is below normal.

Precip Image: 10 AM CT

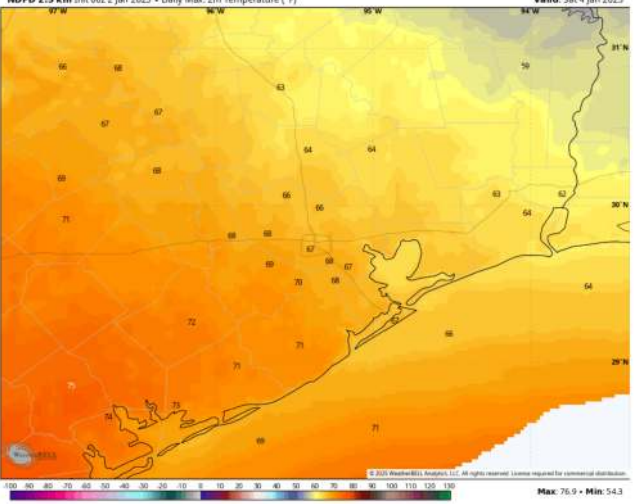


NDFD 2.5 km Init 06z 2 Jan 2025 • 10m Wind Speed • Streamlines (mph) Hour: 60 • Valid: 18z Sat 4 Jan 2025



Wind Speed:
12 PM CT

NDFD 2.5 km Init 06z 2 Jan 2025 • Daily Max. 2m Temperature (°F) Valid: Sat 4 Jan 2025



High Temps
Saturday