

Severe Storms Update

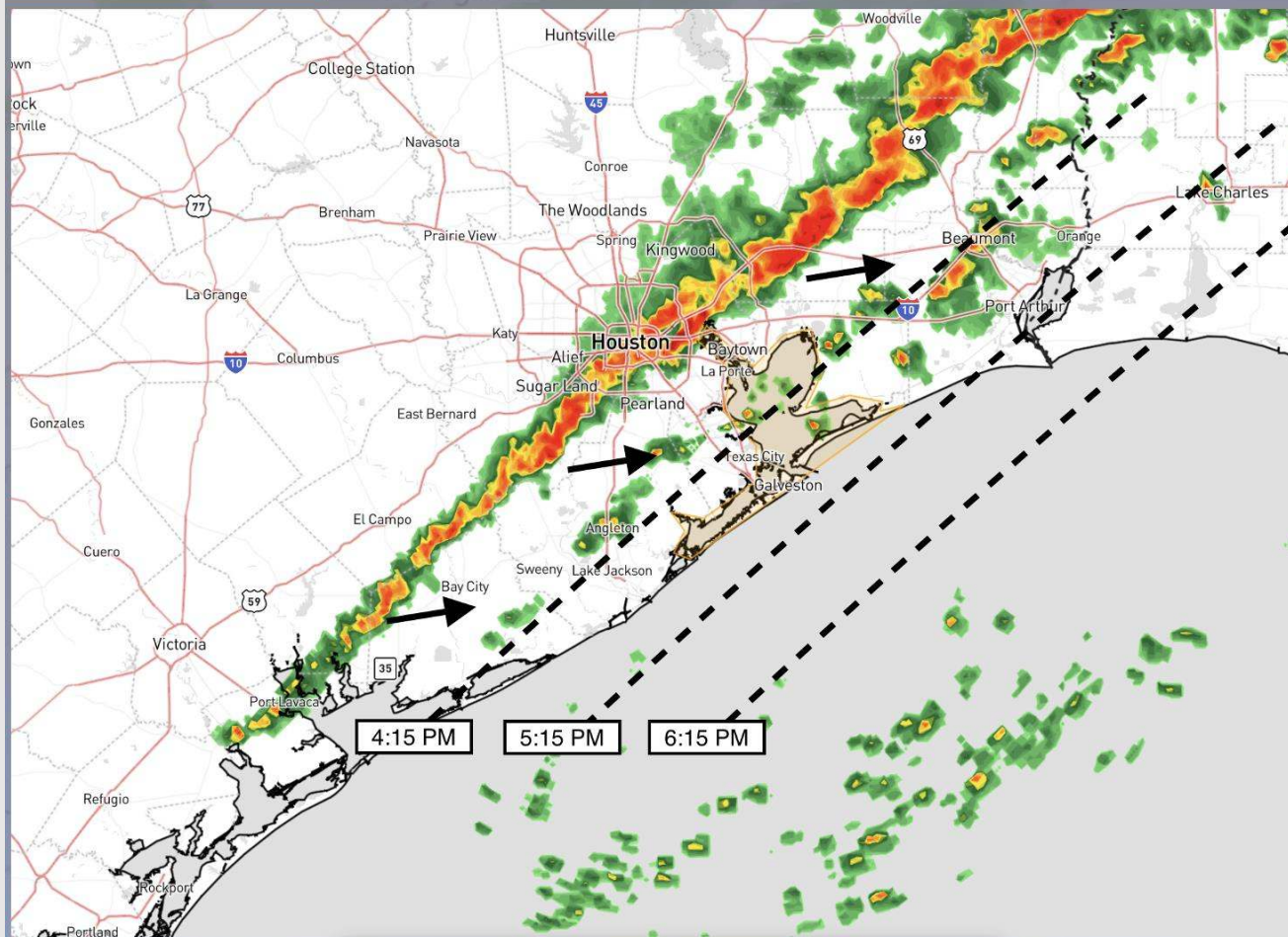


Strong/Severe Storm Timing

NOWCAST

3:30 PM CT Sunday, January 5, 2025

Forecaster: Kipper



CURRENT RADAR: 3:15 PM CT SUN

Strong/Severe Storms will continue to move across the area SUN PM

Main risks include: 45-55+ MPH (40-50+ KTS) Gusts, Hail, Isolated Tornado

Non-Thunderstorm gusts of 25-30 MPH will continue

Houston Pilots Forecast Package



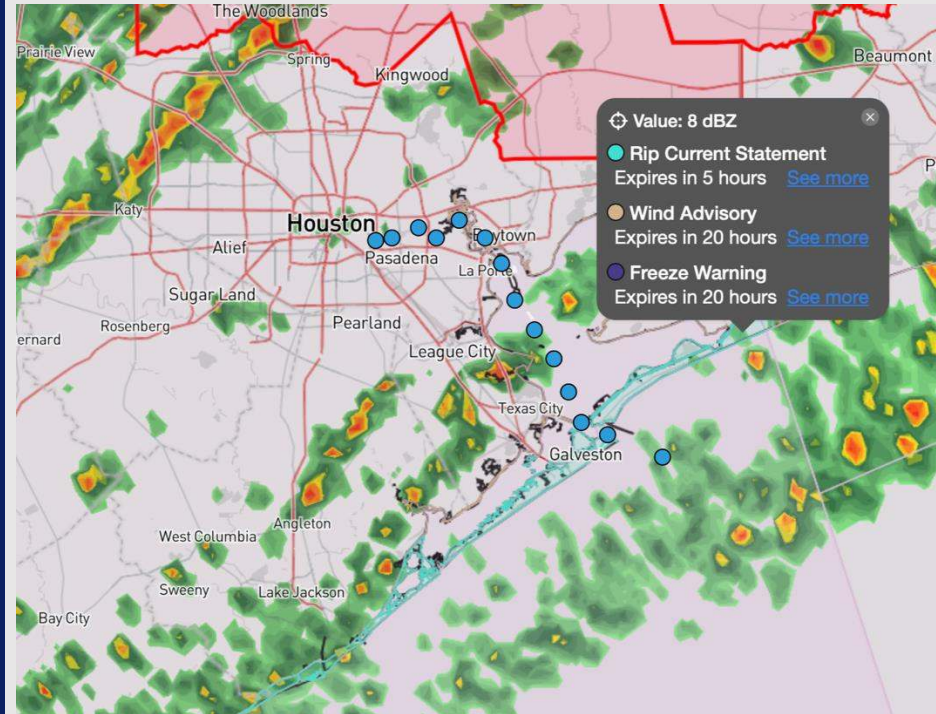
Updated: 1:10 PM CT

Sunday, January 5, 2025

Forecaster: Hope Kleitsch

Weather Headlines

- **Elevated wave heights of 6ft will continue through 6PM at the Boarding Station, dropping below 4ft by 9AM MON.**
- **No visibility concerns from sea fog are favored over the next 72 hours.**
- **Risks for strong/severe thunderstorms in play for all stations from 3PM to 5PM as the front moves in.**



Current Radar: 1:05 PM CT

As always, please do not hesitate to reach out to us with any forecast questions at **(317)-560-8122**. Press **1** for forecast questions.

You can also access real-time forecast updates and 24/7 meteorological chat assistance on your **Clarity** app. Click [here](#) for login assistance.



Houston Pilots Port Trigger Update



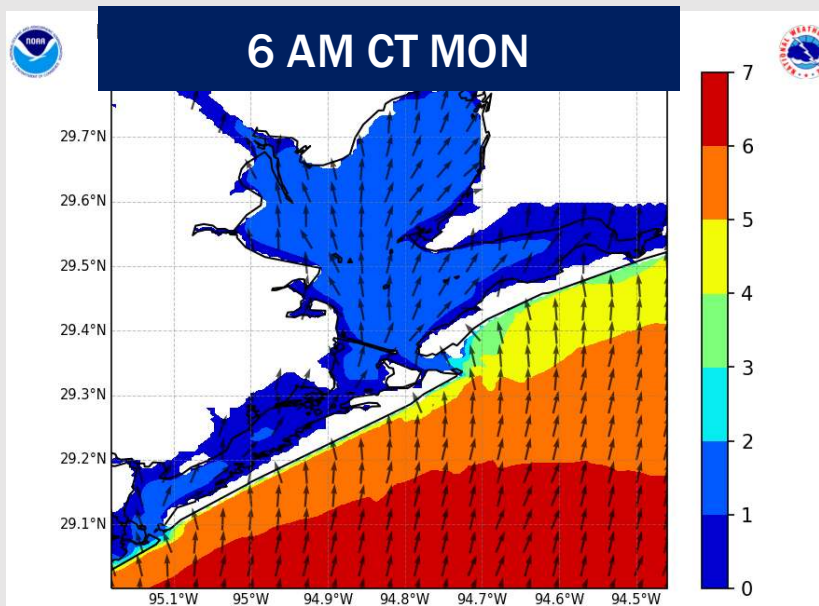
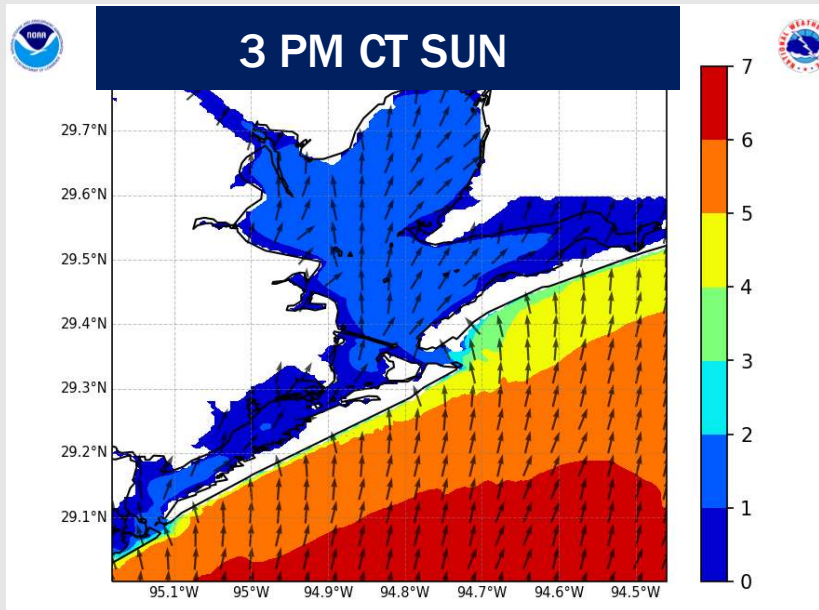
Port Condition	34 KTS+ Sustained Wind Trigger Reached at:	6 Foot Wave Trigger Reached at:	Time Remaining/Trigger Ends At:
Victor	---	---	---
Whiskey	---	---	---
X-Ray	---	---	---
Yankee	---	---	---
Zulu	---	CURRENT	SUN 6 PM

Port Condition	Trigger Definition	Trigger Reached?
Victor	Hurricane entering/developing in Gulf of Mexico that's a threat to the area	NO
Whiskey	72 hours prior to predicted sustained winds of 34+ KTS	NO
X-Ray	48 hours prior to predicted sustained winds of 34+ KTS or 6' wave height	PAST
Yankee	24 hours prior to predicted sustained winds of 34+ KTS or 6' wave height	PAST
Zulu	12 hours prior to predicted sustained winds of 34+ KTS or 6' wave height	YES

NOTES: The potential for wave heights at the Boarding Station to reach 6 ft will be possible through 6 PM Sunday.

Sustained winds are NOT favored to reach to 34 kts.

Wave Height Forecast Update



Peak wave heights of 6 ft will be reached ~3PM at the Boarding Station.

After 3 PM wave heights will slowly decrease, dipping below 6 ft by 6 PM SUN and 4 ft or less by 9 AM MON.

Wave heights will hold steady at 3-4 ft throughout the day Monday.

Houston Pilots Extended Range Visibility Report



Wednesday 1/8/24

No fog concerns for Wednesday.

Forecast Confidence



Friday 1/10/25

No fog concerns for Friday.

Forecast Confidence



Thursday 1/9/25

No fog concerns for Thursday, however visibilities may be reduced to 2-4 miles due to heavy downpours.

Forecast Confidence



Chance for Fog

Wednesday AM	Unlikely
Wednesday PM	Unlikely
Thursday AM	Unlikely
Thursday PM	Unlikely
Friday AM	Unlikely
Friday PM	Unlikely

Houston Pilots Visibility Chart (miles)



Forecast Confidence



Visibility	Sun 2 pm	Sun 3 pm	Sun 4 pm	Sun 5 pm	Sun 6 pm	Sun 7 pm	Sun 8 pm	Sun 9 pm	Sun 10 pm	Sun 11 pm	Mon 12 am	Mon 1 am	Mon 2 am	Mon 3 am	Mon 4 am	Mon 5 am	Mon 6 am	Mon 7 am	Mon 8 am	Mon 9 am	Mon 10 am	Mon 11 am	Mon 12 pm	Mon 1 pm
Houston Pilots N - 610 Bridge	9	10	8	6.9	10	10	10	10	10	10	10	10	10	10	10	10	10	10	10	10	10	10	10	10
Houston Pilots M - Kinder 1	10	10	9	6.9	10	10	10	10	10	10	10	10	10	10	10	10	10	10	10	10	10	10	10	10
Houston Pilots L - Greens Bayou	10	10	10	6.9	10	10	10	10	10	10	10	10	10	10	10	10	10	10	10	10	10	10	10	10
Houston Pilots K - Shell Crude	10	10	10	6.9	10	10	10	10	10	10	10	10	10	10	10	10	10	10	10	10	10	10	10	10
Houston Pilots J - Lynchburg Ferries	10	10	10	6.9	10	10	10	10	10	10	10	10	10	10	10	10	10	10	10	10	10	10	10	10
Houston Pilots I - Exxon 3	10	10	10	2	10	10	10	10	10	10	10	10	10	10	10	10	10	10	10	10	10	10	10	10
Houston Pilots H - Morgans Point	10	10	10	2	10	10	10	10	10	10	10	10	10	10	10	10	10	10	10	10	10	10	10	10
Houston Pilots G - 75/76	9	8	8	2.5	9	9	10	10	10	10	10	10	10	10	10	10	10	10	10	10	10	10	10	10
Houston Pilots F - 63/64	8	6.9	8	10	7.9	9	10	10	10	10	10	10	10	10	10	10	10	10	10	10	10	10	10	10
Houston Pilots E - 51/52	6.9	6.9	6.9	10	6.9	9	9	9	10	10	10	10	10	10	10	10	10	10	10	10	10	10	10	10
Houston Pilots D - 37/38	6.9	6.9	6.9	10	5.9	9	9	9	10	10	10	10	10	10	10	10	10	10	10	10	10	10	10	10
Houston Pilots C - 25/26	6.9	6.9	6.9	7.9	5.9	9	9	9	10	10	10	10	10	10	10	10	10	10	10	10	10	10	10	10
Houston Pilots B - 11/12	6.9	6.9	6.9	6.9	5.9	9	9	9	10	10	10	10	10	10	10	10	10	10	10	10	10	10	10	10
Houston Pilots A - 1 & 2 Bravo	6.9	6.9	6.9	5.9	6.9	6.9	6.9	6.9	6.9	7.9	9	10	10	10	10	10	10	10	10	10	7.9	10	10	10

NOTE: This is automated data that may/may not agree with the official B.A.M. thinking that's found on the daily slides or special visibility report slides. This data should be used as a guide only

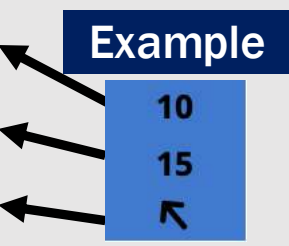
Houston Pilots Wind Chart



Forecast Confidence



Sustained wind 10 Knots
Gusts 15 Knots
Wind from the SE



Wind	Sun 2 pm	Sun 3 pm	Sun 4 pm	Sun 5 pm	Sun 6 pm	Sun 7 pm	Sun 8 pm	Sun 9 pm	Sun 10 pm	Sun 11 pm	Mon 12 am	Mon 1 am	Mon 2 am	Mon 3 am	Mon 4 am	Mon 5 am	Mon 6 am	Mon 7 am	Mon 8 am	Mon 9 am	Mon 10 am	Mon 11 am	Mon 12 pm	Mon 1 pm
Houston Pilots N - 610 Bridge	15 31 ↗	15 31 ↗	15 29 →	15 30 ↘	15 30 ↘	15 29 ↘	15 30 ↘	17 31 ↘	17 32 ↘	17 33 ↘	17 32 ↘	17 32 ↘	17 32 ↘	17 32 ↘	16 31 ↘	16 30 ↘	16 30 ↘	15 28 ↘	15 29 ↘	15 28 ↘	15 28 ↘	15 28 ↘	14 28 ↘	13 26 ↘
Houston Pilots M - Kinder 1	15 31 ↗	15 31 ↗	15 29 →	15 30 ↘	15 30 ↘	15 29 ↘	16 30 ↘	17 32 ↘	17 32 ↘	17 33 ↘	17 32 ↘	17 32 ↘	17 32 ↘	17 32 ↘	17 31 ↘	16 31 ↘	16 30 ↘	15 28 ↘	15 29 ↘	15 28 ↘	15 28 ↘	15 28 ↘	14 28 ↘	13 26 ↘
Houston Pilots L - Greens Bayou	15 31 ↗	15 30 ↗	15 29 →	15 29 ↘	15 29 ↘	14 28 ↘	16 30 ↘	17 31 ↘	17 31 ↘	17 33 ↘	17 32 ↘	17 32 ↘	17 32 ↘	17 32 ↘	16 31 ↘	16 31 ↘	15 30 ↘	15 29 ↘	15 29 ↘	15 28 ↘	15 26 ↘	15 28 ↘	15 26 ↘	13 25 ↘
Houston Pilots K - Shell Crude	15 30 ↗	15 30 ↗	14 28 →	15 29 ↘	15 29 ↘	14 28 ↘	15 30 ↘	16 31 ↘	17 31 ↘	17 33 ↘	17 32 ↘	17 32 ↘	17 32 ↘	17 32 ↘	16 31 ↘	16 31 ↘	15 30 ↘	15 29 ↘	15 29 ↘	15 28 ↘	15 26 ↘	15 28 ↘	15 26 ↘	13 25 ↘
Houston Pilots J - Lynchburg Ferries	16 30 ↗	15 30 ↗	15 28 →	15 29 ↘	15 29 ↘	15 29 ↘	15 30 ↘	16 32 ↘	17 32 ↘	17 33 ↘	16 32 ↘	16 31 ↘	16 32 ↘	16 32 ↘	15 31 ↘	15 31 ↘	15 30 ↘	15 28 ↘	15 29 ↘	15 28 ↘	15 28 ↘	15 28 ↘	15 26 ↘	14 25 ↘
Houston Pilots I - Exxon 3	17 29 ↗	17 29 ↗	16 26 →	17 28 ↘	18 28 ↘	20 28 ↘	20 30 ↘	22 31 ↘	23 32 ↘	24 33 ↘	24 33 ↘	24 32 ↘	24 32 ↘	24 32 ↘	24 31 ↘	23 31 ↘	23 30 ↘	22 29 ↘	21 29 ↘	20 28 ↘	18 26 ↘	17 28 ↘	16 26 ↘	15 24 ↘
Houston Pilots H - Morgans Point	17 29 ↗	17 28 ↗	16 26 →	17 28 ↘	17 28 ↘	18 28 ↘	20 30 ↘	22 32 ↘	22 32 ↘	24 33 ↘	24 33 ↘	24 32 ↘	24 33 ↘	24 33 ↘	23 31 ↘	23 31 ↘	22 30 ↘	20 29 ↘	20 29 ↘	18 28 ↘	17 26 ↘	17 28 ↘	16 26 ↘	15 24 ↘
Houston Pilots G - 75/76	17 29 ↗	17 29 ↗	17 28 →	18 29 ↘	20 29 ↘	20 29 ↘	22 31 ↘	24 33 ↘	24 36 ↘	26 37 ↘	26 37 ↘	26 37 ↘	26 37 ↘	26 37 ↘	26 37 ↘	26 36 ↘	25 35 ↘	24 33 ↘	23 33 ↘	22 31 ↘	20 29 ↘	20 29 ↘	17 29 ↘	16 26 ↘
Houston Pilots F - 63/64	17 30 ↗	17 29 ↗	17 28 →	18 29 ↘	20 29 ↘	20 29 ↘	22 31 ↘	24 33 ↘	25 35 ↘	26 37 ↘	26 37 ↘	28 38 ↘	29 38 ↘	28 38 ↘	26 37 ↘	28 37 ↘	26 36 ↘	24 35 ↘	24 33 ↘	22 32 ↘	21 30 ↘	20 29 ↘	17 29 ↘	16 26 ↘
Houston Pilots E - 51/52	17 29 ↗	17 29 ↗	17 28 →	20 28 ↘	20 29 ↘	21 29 ↘	22 31 ↘	24 33 ↘	25 36 ↘	26 37 ↘	28 37 ↘	28 37 ↘	29 38 ↘	29 38 ↘	28 37 ↘	28 37 ↘	26 36 ↘	25 35 ↘	24 35 ↘	23 32 ↘	21 31 ↘	20 29 ↘	18 29 ↘	17 26 ↘
Houston Pilots D - 37/38	17 29 ↗	17 29 ↗	17 28 →	18 28 ↘	20 29 ↘	20 29 ↘	22 31 ↘	24 35 ↘	25 36 ↘	26 37 ↘	28 38 ↘	28 38 ↘	29 39 ↘	29 39 ↘	28 37 ↘	28 38 ↘	26 36 ↘	24 35 ↘	24 35 ↘	23 33 ↘	22 31 ↘	20 29 ↘	20 29 ↘	17 28 ↘
Houston Pilots C - 25/26	17 29 ↗	17 28 ↗	17 28 →	18 28 ↘	20 28 ↘	20 29 ↘	22 32 ↘	24 35 ↘	24 37 ↘	26 38 ↘	26 38 ↘	26 39 ↘	28 39 ↘	28 39 ↘	26 38 ↘	26 38 ↘	26 37 ↘	24 35 ↘	24 35 ↘	23 33 ↘	22 31 ↘	20 29 ↘	20 29 ↘	17 28 ↘
Houston Pilots B - 11/12	17 28 ↗	17 26 ↗	16 26 →	17 26 ↘	17 26 ↘	18 28 ↘	21 31 ↘	22 35 ↘	24 36 ↘	24 37 ↘	25 37 ↘	25 37 ↘	26 38 ↘	26 38 ↘	24 37 ↘	24 37 ↘	24 36 ↘	22 35 ↘	22 33 ↘	22 32 ↘	20 30 ↘	20 29 ↘	18 29 ↘	17 26 ↘
Houston Pilots A - 1 & 2 Bravo	18 30 ↗	18 29 ↗	18 29 →	20 29 ↘	20 29 ↘	21 29 ↘	23 33 ↘	26 37 ↘	28 39 ↘	29 39 ↘	29 40 ↘	29 40 ↘	29 40 ↘	29 40 ↘	29 39 ↘	28 39 ↘	26 37 ↘	25 35 ↘	24 35 ↘	24 35 ↘	23 32 ↘	22 32 ↘	21 31 ↘	20 30 ↘

NOTE: This is automated data that may/may not agree with the official BAM thinking that's found on the daily slides. This data should be used as a guide only.

Houston Pilots: SUN. 1/5/2025



Forecast Discussion

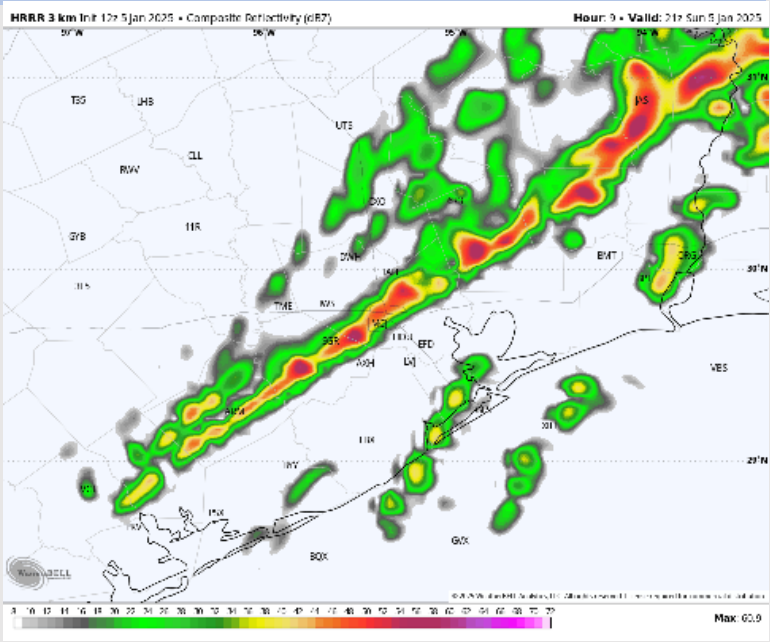
Precip: Scattered showers/storms will continue through 9PM. A line of strong to severe storms will roll in from the north between 3PM – 5PM. **Risks will be for wind gusts of 45-55 kts and an isolated tornado.**

Wind: Winds will be out of the SE through 5 PM before shifting to be out of the N/NW for the rest of the day. **N of Morgan's Point:** Winds will be at 10 – 15 kts throughout the rest of the day. **S of Morgan's Point:** Winds will be at 15 – 20 kts through 6 PM before winds increase to 25 – 30 kts for the rest of the day. **Non-thunderstorm wind gusts of 20 – 25 kts possible for stations N of Morgan's Point throughout today. After 6 PM wind gusts of 30-35 kts will be possible for all Stations.**

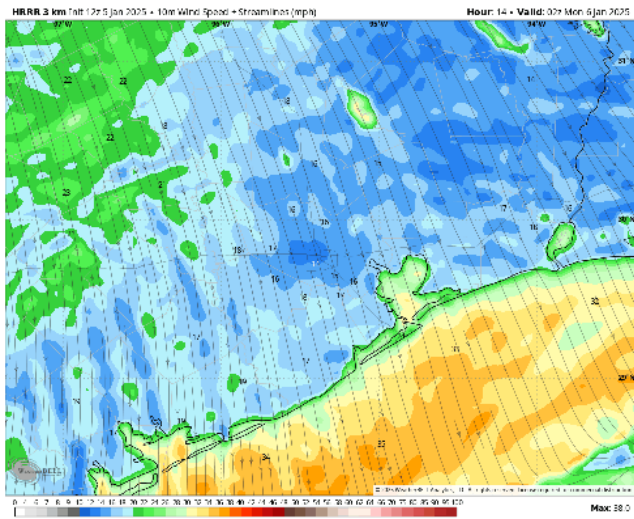
Low Temps: **N of Morgan's Point:** Lower 30s F. **S of Morgan's Point:** Mid to upper 30s.

Visibility: No fog concerns today, however, <1.0 mile visibility will be possible as thunderstorms work through.

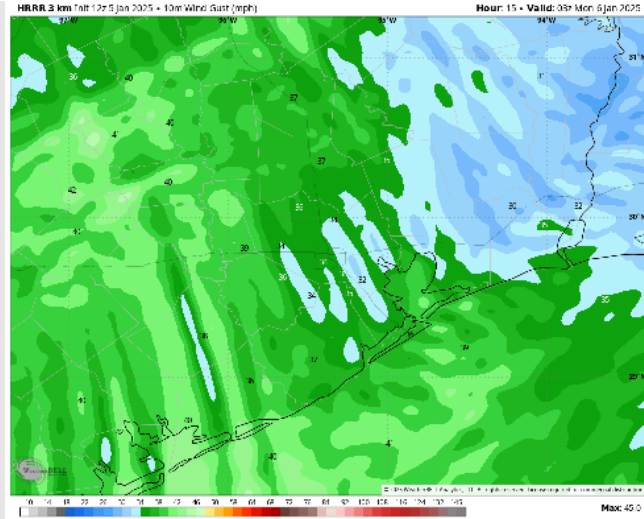
Precip Image: 3 PM CT



Wind Speed
8 PM CT



Max Wind
Gusts Today



Houston Pilots: MON. 1/6/2025



Forecast Discussion

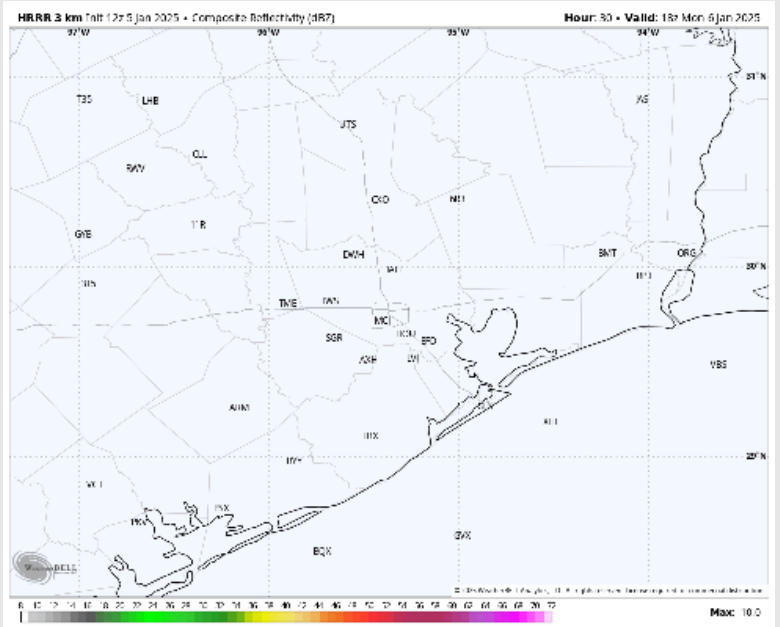
Precip: Favoring dry conditions for all stations on Monday.

Wind: Winds will be out of the N/NW throughout Monday. **N of Morgan's Point:** Winds will be at 9 – 14 kts throughout the day Monday. **S of Morgan's Point:** Winds will be at 17 – 22 kts through 12 PM before decreasing to 15 – 20 kts for the rest of the day Monday. **Wind gusts of 30-35 kts linger into Monday morning for all Stations, decreasing gradually through 9 AM. Wind gusts of 20-25 kts in play for all Stations after 9 AM and through the rest of the day.**

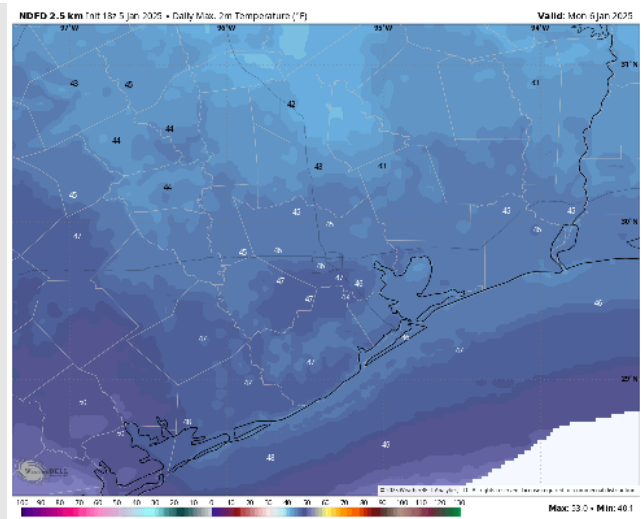
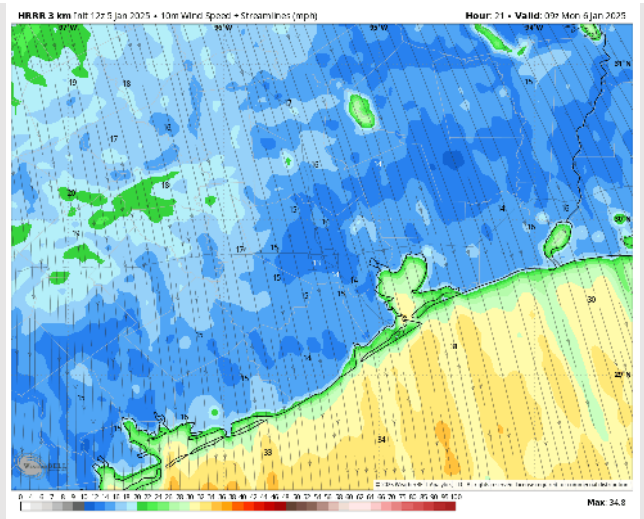
High Temps: **N of Morgan's Point:** Mid 40s F. **S of Morgan's Point:** Mid 40s F

Visibility: Not anticipating any visibility concerns for Monday.

Precip Image: 12 PM CT



**Wind Speed:
3 AM CT**



**High Temps
Monday**

Houston Pilots: TUE. 1/7/2025



Forecast Discussion

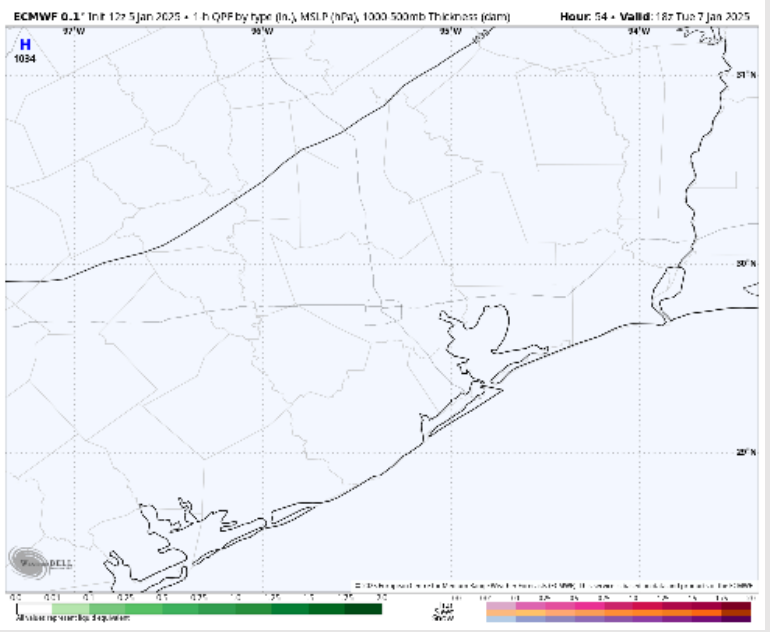
Precip: Favoring dry conditions for Tuesday.

Wind: Winds will be out of the N/NE throughout the day Tuesday. **N of Morgan's Point:** Winds will be 3 – 8 kts throughout the day. **S of Morgan's Point:** Winds will be at 13 – 18 kts through the day. **Gusts of 20 – 25 kts will be possible for Stations S. of Morgan's Point.**

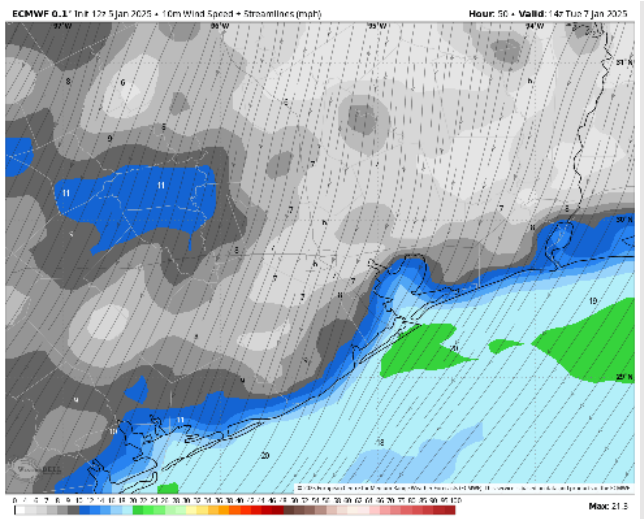
High Temps: **N of Morgan's Point:** Upper 40s F. **S of Morgan's Point:** Mid to upper 40s F.

Visibility: No visibility concerns for Tuesday.

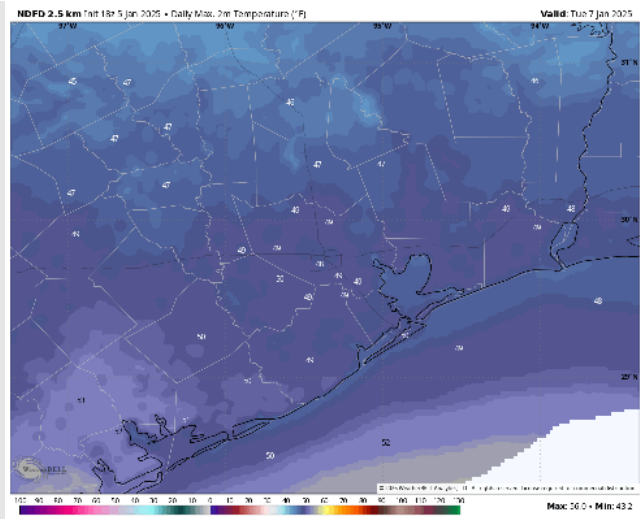
Precip Image: 12 PM CT



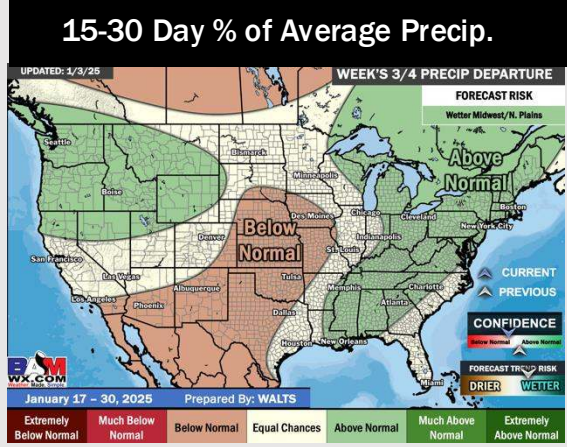
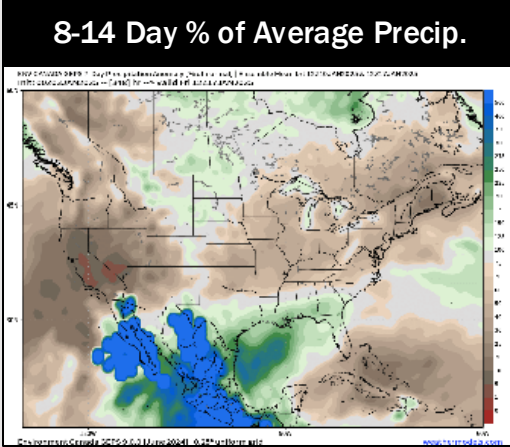
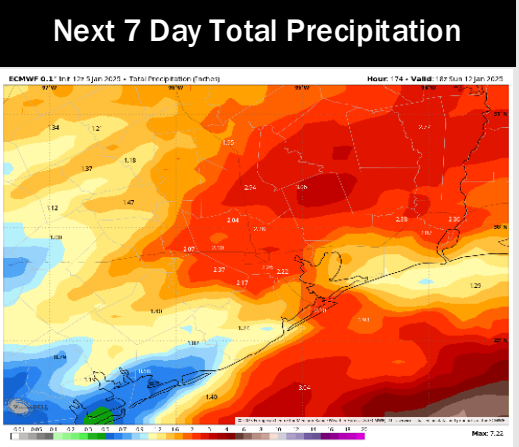
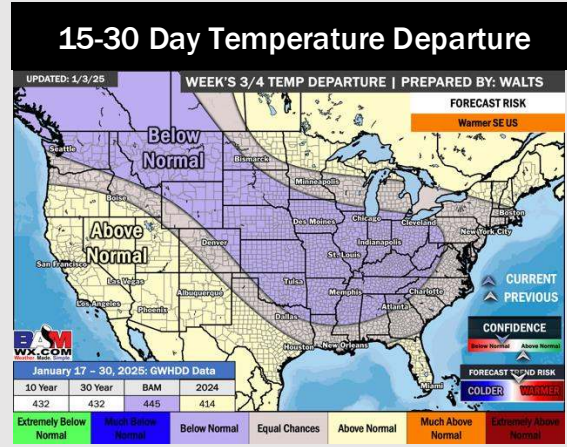
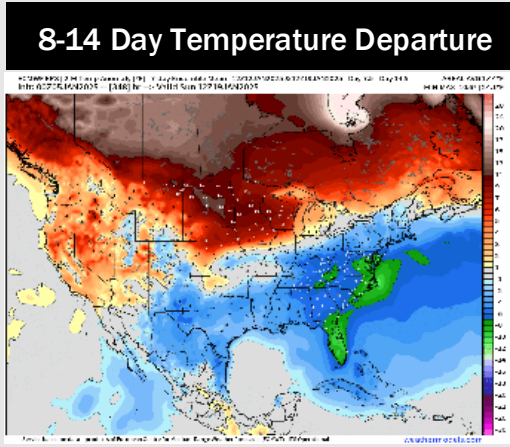
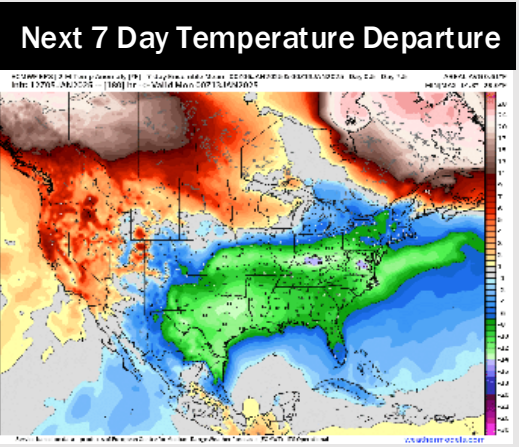
**Wind Speed:
8 AM CT**



**High Temps
Tuesday**



Houston Pilots: 1/5/2025



- Temps are expected to be below normal for the week 1 timeframe. Rain favored over the weekend and then drier conditions in play for the start of next week.
- Below normal temperatures and above normal rainfall are expected for week 2.
- Above normal temperatures and near normal precipitation chances are expected for the weeks 3/4 timeframe.