

# Houston Pilots Forecast Package



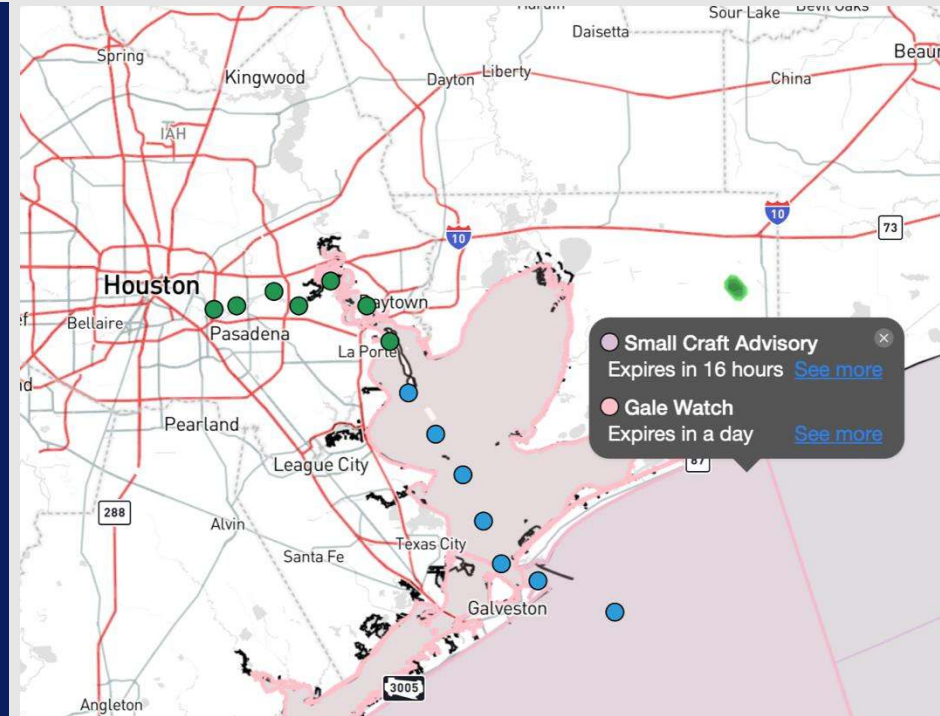
Updated: 2:00 AM CT

Sunday, January 5, 2025

Forecaster: Tyler Riggles

## Weather Headlines

- **Elevated winds will bring the risk of wave heights of 6'+ come this AM. Check the wave height slide for more info! [VIDEO update as of 2 AM CT SUN.](#)**
- **No visibility concerns from sea fog are favored over the next 72 hours.**
- **Risks for strong/severe thunderstorms in pay for all stations today.**



**Current Radar: 1:55 AM CT**

As always, please do not hesitate to reach out to us with any forecast questions at **(317)-560-8122**. Press **1** for forecast questions.

You can also access real-time forecast updates and 24/7 meteorological chat assistance on your [Clarity](#) app. Click [here](#) for login assistance.



# Houston Pilots Port Trigger Update



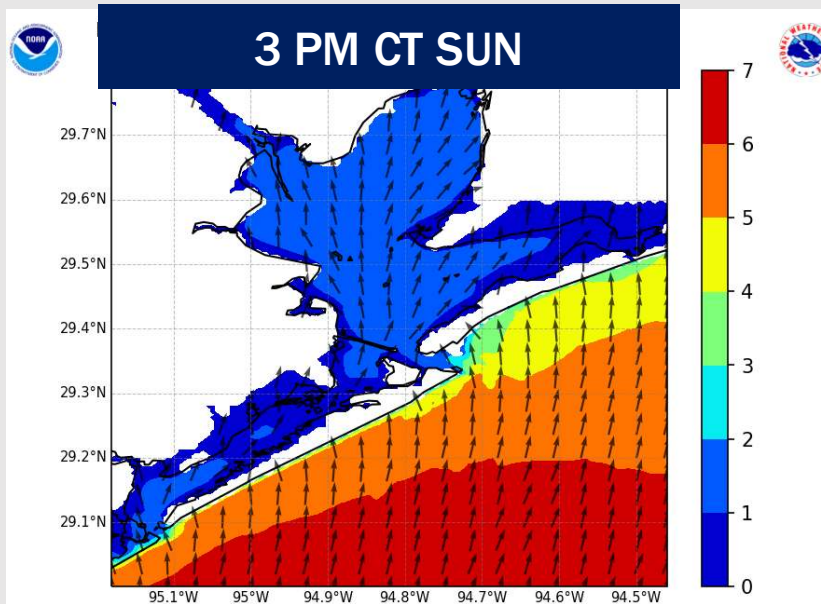
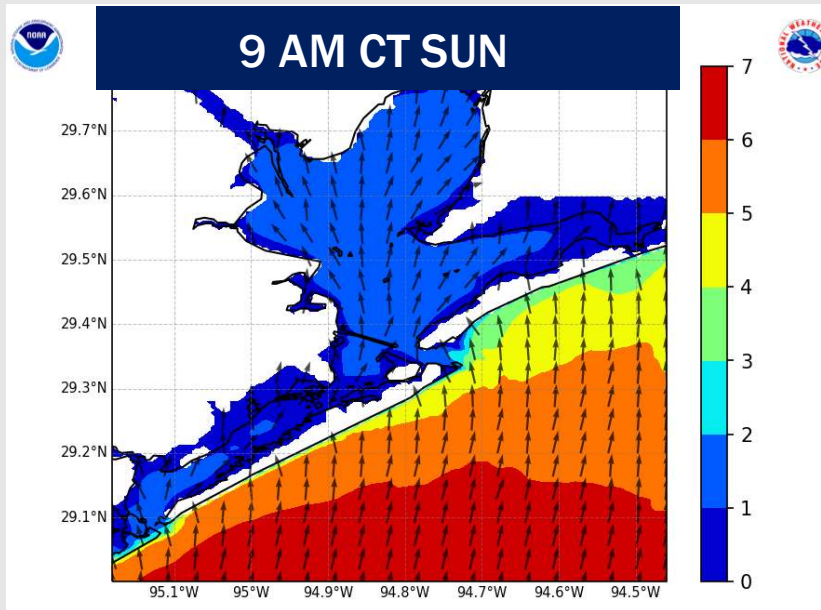
Port Condition	34 KTS+ Sustained Wind Trigger Reached at:	6 Foot Wave Trigger Reached at:	Time Remaining/Trigger Ends At:
Victor	---	---	---
Whiskey	---	---	---
X-Ray	---	---	---
Yankee	---	---	---
Zulu	---	<b>CURRENT</b>	<b>SUN 6 PM</b>

Port Condition	Trigger Definition	Trigger Reached?
Victor	Hurricane entering/developing in Gulf of Mexico that's a threat to the area	<b>NO</b>
Whiskey	72 hours prior to predicted sustained winds of 34+ KTS	<b>NO</b>
X-Ray	48 hours prior to predicted sustained winds of 34+ KTS or <b>6' wave height</b>	<b>PAST</b>
Yankee	24 hours prior to predicted sustained winds of 34+ KTS or <b>6' wave height</b>	<b>PAST</b>
Zulu	12 hours prior to predicted sustained winds of 34+ KTS or <b>6' wave height</b>	<b>YES</b>

**NOTES:** The potential for wave heights at the Boarding Station to reach 6 ft will be possible beginning at 6 AM Sunday lasting through 6 PM Sunday.

*Sustained winds are NOT favored to reach to 34 kts through the weekend.*

# Wave Height Forecast Update



Elevated, sustained winds out of the S/SE will cause elevated wave heights SUN. The threat is favored to remain for only the Boarding Station.

Expecting wave heights to begin to quickly increase after 3 AM SUN reaching 5 – 6 ft by 9 AM.

Favoring peak wave heights of 5 – 6 ft to last from 9 AM – 3 PM.

After 3 PM wave heights will slowly decrease, dipping below 6 ft by 6 PM SUN and 4 ft or less by 9 AM MON.

# Houston Pilots Extended Range Visibility Report



## Wednesday 1/8/24

No fog concerns for Wednesday.

### Forecast Confidence



## Thursday 1/9/25

No fog concerns for Thursday.

### Forecast Confidence



## Friday 1/10/25

No fog concerns for Thursday.

### Forecast Confidence



## Chance for Fog

Wednesday AM	Unlikely
Wednesday PM	Unlikely
Thursday AM	Unlikely
Thursday PM	Unlikely
Friday AM	Unlikely
Friday PM	Unlikely

# Houston Pilots Visibility Chart (miles)



## Forecast Confidence



Visibility	Sun 4 am	Sun 5 am	Sun 6 am	Sun 7 am	Sun 8 am	Sun 9 am	Sun 10 am	Sun 11 am	Sun 12 pm	Sun 1 pm	Sun 2 pm	Sun 3 pm	Sun 4 pm	Sun 5 pm	Sun 6 pm	Sun 7 pm	Sun 8 pm	Sun 9 pm	Sun 10 pm	Sun 11 pm	Mon 12 am	Mon 1 am	Mon 2 am	Mon 3 am
Houston Pilots N - 610 Bridge	7.9	9	10	10	9	7.9	10	10	10	9	9	6.9	5.9	5.9	7.9	10	10	10	10	10	10	10	10	10
Houston Pilots M - Kinder 1	7.9	9	10	10	9	7.9	10	10	10	9	9	6.9	6.9	5.9	7.9	10	10	10	10	10	10	10	10	10
Houston Pilots L - Greens Bayou	6.9	9	9	10	7.9	6.9	9	10	10	9	9	6.9	6.9	5.9	6.9	10	10	10	10	10	10	10	10	10
Houston Pilots K - Shell Crude	6.9	9	9	10	7.9	6.9	9	10	10	9	9	6.9	6.9	5.9	6.9	10	10	10	10	10	10	10	10	10
Houston Pilots J - Lynchburg Ferries	6.9	9	9	10	7.9	6.9	9	10	10	9	9	6.9	6.9	5.9	6.9	10	10	10	10	10	10	10	10	10
Houston Pilots I - Exxon 3	6.9	9	9	10	7.9	6.9	9	10	10	9	9	6.9	6.9	5.9	4.9	10	10	10	10	10	10	10	10	10
Houston Pilots H - Morgans Point	7.9	9	9	10	7.9	6.9	9	10	10	10	9	6.9	6.9	5.9	6.9	10	10	10	10	10	10	10	10	10
Houston Pilots G - 75/76	10	10	10	10	10	10	10	10	10	10	9	6.9	6.9	10	10	10	10	10	10	10	10	10	10	10
Houston Pilots F - 63/64	10	10	10	10	10	10	10	10	10	10	9	6.9	6.9	10	10	10	10	10	10	10	10	10	10	10
Houston Pilots E - 51/52	10	10	10	10	10	10	10	10	10	10	9	6.9	9	10	10	10	10	10	10	10	10	10	10	10
Houston Pilots D - 37/38	10	10	10	10	10	10	10	10	10	10	9	6.9	9	10	10	10	10	10	10	10	10	10	10	10
Houston Pilots C - 25/26	10	10	10	10	10	10	10	10	10	10	9	6.9	9	10	10	10	10	10	10	10	10	10	10	10
Houston Pilots B - 11/12	10	10	10	10	10	10	10	10	9	9	9	6.9	9	10	9	10	10	9	10	10	10	10	10	10
Houston Pilots A - 1 & 2 Bravo	10	10	10	10	10	10	9	9	7.9	9	6.9	6.9	6.9	6.9	7.9	9	6.9	6.9	7.9	7.9	10	10	10	10

**NOTE: This is automated data that may/may not agree with the official BAM thinking that's found on the daily slides or special visibility report slides. This data should be used as a guide only**

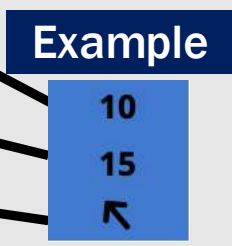
# Houston Pilots Wind Chart



## Forecast Confidence



Sustained wind 10 Knots  
Gusts 15 Knots  
Wind from the SE



Wind	Sun 4 am	Sun 5 am	Sun 6 am	Sun 7 am	Sun 8 am	Sun 9 am	Sun 10 am	Sun 11 am	Sun 12 pm	Sun 1 pm	Sun 2 pm	Sun 3 pm	Sun 4 pm	Sun 5 pm	Sun 6 pm	Sun 7 pm	Sun 8 pm	Sun 9 pm	Sun 10 pm	Sun 11 pm	Mon 12 am	Mon 1 am	Mon 2 am	Mon 3 am	
Houston Pilots N - 610 Bridge	13 ↑	13 ↑	13 ↑	14 ↑	15 ↑	15 ↑	15 ↑	15 ↑	17 ↑	17 ↑	16 ↑	16 ↑	15 ↑	15 ↑	15 ↑	14 ↓	15 ↓	17 ↓	17 ↓	17 ↓	17 ↓	17 ↓	17 ↓	17 ↓	17 ↓
Houston Pilots M - Kinder 1	13 ↑	13 ↑	13 ↑	14 ↑	15 ↑	15 ↑	15 ↑	16 ↑	17 ↑	17 ↑	16 ↑	16 ↑	15 ↑	15 ↑	15 ↑	14 ↓	15 ↓	17 ↓	17 ↓	18 ↓	17 ↓	17 ↓	17 ↓	17 ↓	17 ↓
Houston Pilots L - Greens Bayou	13 ↑	13 ↑	13 ↑	13 ↑	14 ↑	14 ↑	14 ↑	15 ↑	17 ↑	17 ↑	16 ↑	15 ↑	15 ↑	15 ↑	15 ↑	14 ↓	15 ↓	17 ↓	17 ↓	17 ↓	17 ↓	17 ↓	17 ↓	17 ↓	17 ↓
Houston Pilots K - Shell Crude	13 ↑	13 ↑	13 ↑	13 ↑	14 ↑	14 ↑	14 ↑	16 ↑	17 ↑	16 ↑	16 ↑	15 ↑	15 ↑	15 ↑	15 ↑	14 ↓	15 ↓	16 ↓	17 ↓	17 ↓	17 ↓	17 ↓	17 ↓	17 ↓	17 ↓
Houston Pilots J - Lynchburg Ferries	12 ↑	13 ↑	13 ↑	13 ↑	14 ↑	14 ↑	14 ↑	16 ↑	17 ↑	17 ↑	17 ↑	16 ↑	15 ↑	15 ↑	15 ↑	14 ↓	15 ↓	16 ↓	17 ↓	17 ↓	17 ↓	17 ↓	16 ↓	16 ↓	16 ↓
Houston Pilots I - Exxon 3	17 ↑	18 ↑	18 ↑	18 ↑	18 ↑	17 ↑	17 ↑	18 ↑	18 ↑	17 ↑	17 ↑	17 ↑	17 ↑	17 ↑	18 ↑	18 ↑	20 ↑	22 ↑	23 ↑	24 ↑	24 ↑	24 ↑	24 ↑	24 ↑	24 ↑
Houston Pilots H - Morgans Point	17 ↑	17 ↑	17 ↑	17 ↑	17 ↑	17 ↑	17 ↑	17 ↑	17 ↑	17 ↑	17 ↑	17 ↑	17 ↑	17 ↑	18 ↑	18 ↑	20 ↑	22 ↑	22 ↑	24 ↑	24 ↑	24 ↑	24 ↑	24 ↑	24 ↑
Houston Pilots G - 75/76	20 ↑	20 ↑	21 ↑	21 ↑	20 ↑	20 ↑	18 ↑	20 ↑	20 ↑	18 ↑	18 ↑	18 ↑	17 ↑	18 ↑	20 ↑	20 ↑	22 ↑	24 ↑	24 ↑	26 ↑	26 ↑	26 ↑	26 ↑	26 ↑	26 ↑
Houston Pilots F - 63/64	20 ↑	21 ↑	21 ↑	21 ↑	21 ↑	20 ↑	18 ↑	20 ↑	20 ↑	18 ↑	18 ↑	18 ↑	18 ↑	20 ↑	20 ↑	20 ↑	22 ↑	24 ↑	25 ↑	26 ↑	28 ↑	28 ↑	29 ↑	29 ↑	29 ↑
Houston Pilots E - 51/52	20 ↑	20 ↑	21 ↑	21 ↑	21 ↑	20 ↑	20 ↑	18 ↑	18 ↑	18 ↑	18 ↑	18 ↑	18 ↑	20 ↑	20 ↑	20 ↑	22 ↑	24 ↑	25 ↑	26 ↑	28 ↑	28 ↑	29 ↑	29 ↑	29 ↑
Houston Pilots D - 37/38	20 ↑	20 ↑	21 ↑	20 ↑	20 ↑	20 ↑	20 ↑	18 ↑	18 ↑	18 ↑	18 ↑	18 ↑	17 ↑	18 ↑	20 ↑	20 ↑	22 ↑	24 ↑	25 ↑	26 ↑	28 ↑	28 ↑	29 ↑	29 ↑	29 ↑
Houston Pilots C - 25/26	18 ↑	20 ↑	20 ↑	20 ↑	20 ↑	20 ↑	20 ↑	18 ↑	20 ↑	18 ↑	18 ↑	17 ↑	17 ↑	18 ↑	18 ↑	18 ↑	21 ↑	23 ↑	24 ↑	26 ↑	26 ↑	28 ↑	29 ↑	29 ↑	29 ↑
Houston Pilots B - 11/12	17 ↑	17 ↑	18 ↑	18 ↑	18 ↑	18 ↑	17 ↑	17 ↑	17 ↑	17 ↑	17 ↑	17 ↑	17 ↑	17 ↑	17 ↑	17 ↑	20 ↑	22 ↑	23 ↑	24 ↑	25 ↑	25 ↑	26 ↑	26 ↑	26 ↑
Houston Pilots A - 1 & 2 Bravo	20 ↑	21 ↑	21 ↑	21 ↑	21 ↑	21 ↑	20 ↑	20 ↑	20 ↑	18 ↑	20 ↑	20 ↑	18 ↑	18 ↑	20 ↑	20 ↑	22 ↑	24 ↑	26 ↑	29 ↑	29 ↑	29 ↑	30 ↑	29 ↑	29 ↑

NOTE: This is automated data that may/may not agree with the official BAM thinking that's found on the daily slides. This data should be used as a guide only.

# Houston Pilots: SUN. 1/5/2025



## Forecast Discussion

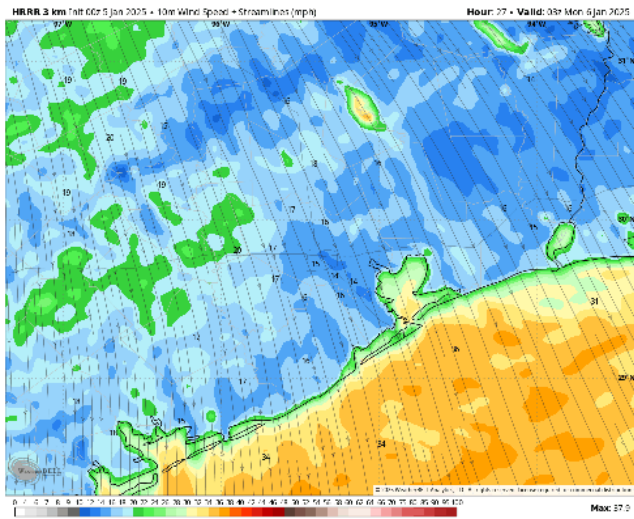
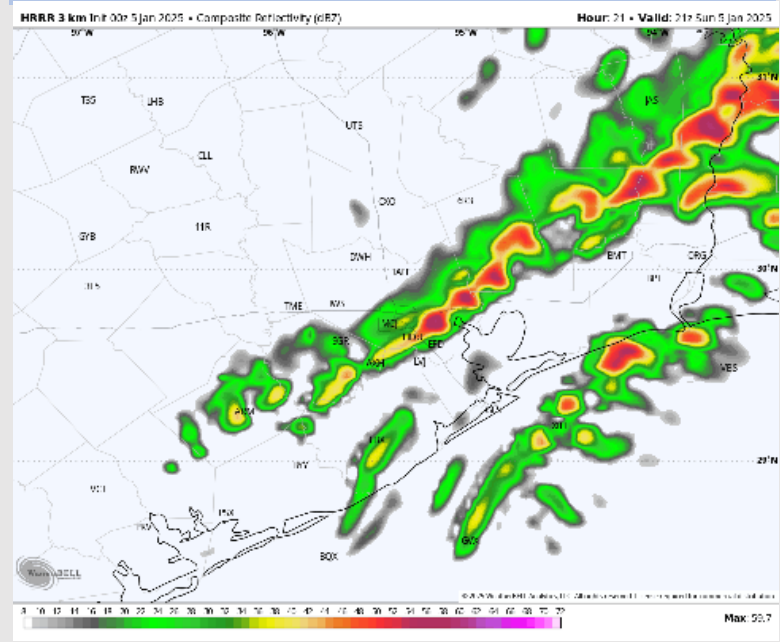
**Precip:** Beginning at 6 AM, light showers will be possible through 12 PM before a line of strong/severe storms work in through 5 PM before rain chances exit for the day. Risks will be for wind gusts of 45-55 kts, small hail, and an isolated tornado risk.

**Wind:** Winds will be out of the S/SE through 6 PM before shifting to be out of the N/NW for the rest of the day. **N of Morgan's Point:** Winds will be at 8 – 13 kts throughout the day. **S of Morgan's Point:** Winds will be at 15 – 20 kts through 6 PM before winds increase to 25 – 30 kts for the rest of the day. **Non-thunderstorm wind gusts of 20 – 25 kts possible for stations N of Morgan's Point throughout today. After 6 PM wind gusts of 30-35 kts will be possible for all Stations.**

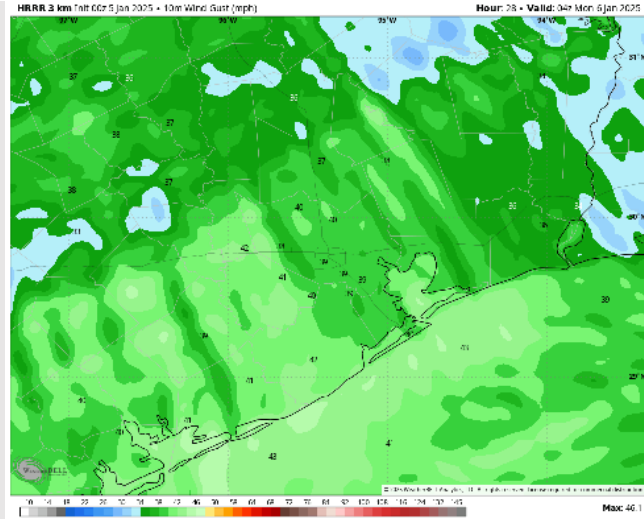
**High Temps:** **N of Morgan's Point:** Mid-70s F. **S of Morgan's Point:** Low 70s F.

**Visibility:** No fog concerns today, however, <1.0 mile visibility will be possible as thunderstorms work through.

## Precip Image: 3 PM CT



Wind Speed  
9 PM CT



Max Wind  
Gusts Today

# Houston Pilots: MON. 1/6/2025



## Forecast Discussion

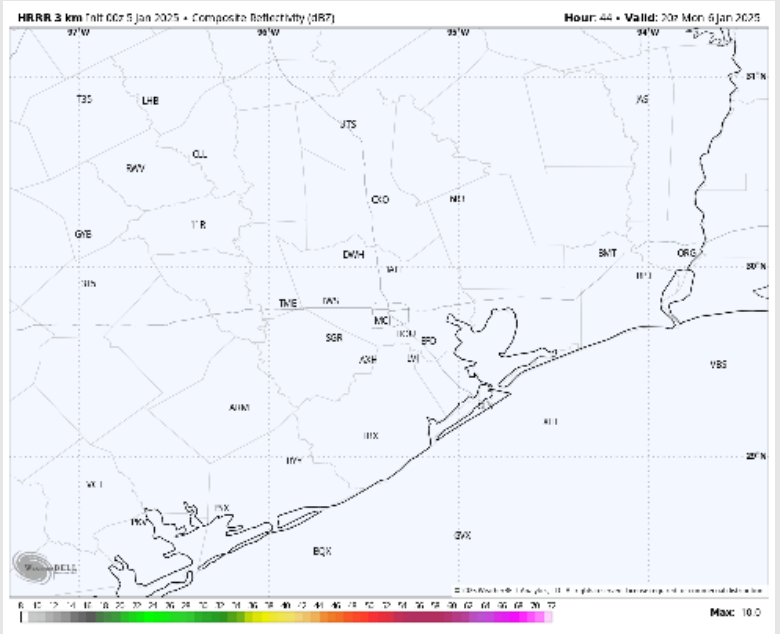
**Precip:** Favoring dry conditions for all stations on Monday.

**Wind:** Winds will generally be out of the N/NW throughout Monday.  
**N of Morgan's Point:** Winds will be at 9 – 14 kts throughout the day Monday.  
**S of Morgan's Point:** Winds will be at 17 – 22 kts through 12 PM before decreasing to 15 – 20 kts for the rest of the day Monday.  
**Wind gusts of 30-35 kts linger into Monday morning for all Stations, decreasing gradually through 12 PM. Wind gusts of 20-25 kts in play for all Stations after 12 PM.**

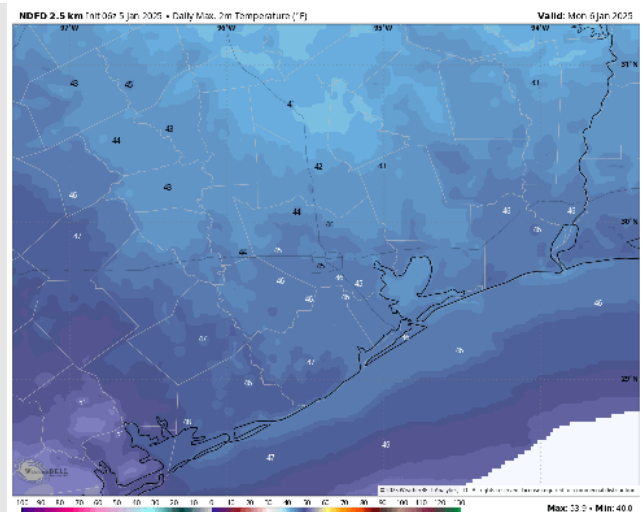
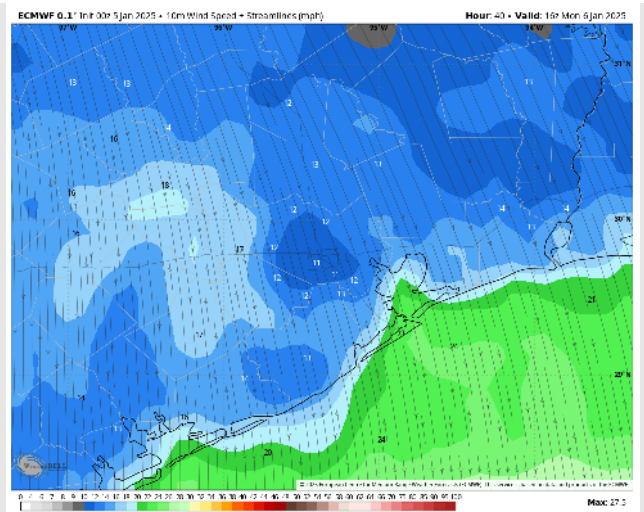
**High Temps:** **N of Morgan's Point:** Mid 40s F. **S of Morgan's Point:** Mid 40s F

**Visibility:** Not anticipating any visibility concerns for Monday.

## Precip Image: 2 PM CT



Wind Speed:  
10 AM CT



High Temps  
Monday



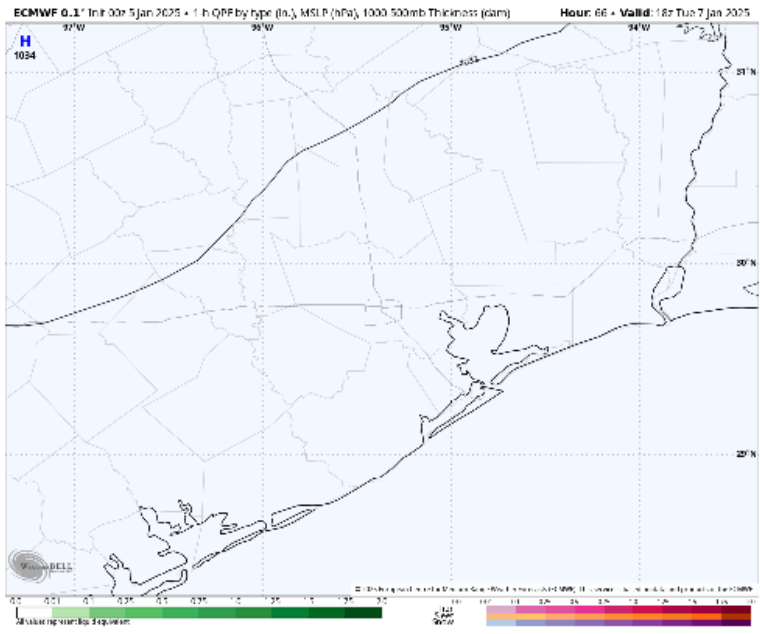
# Houston Pilots: TUE. 1/7/2025



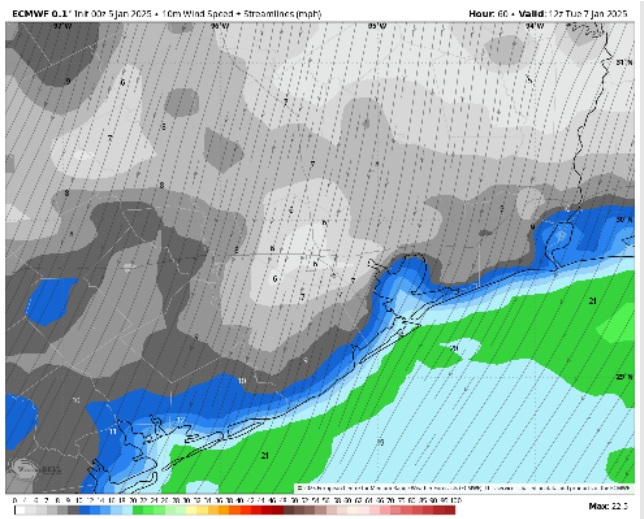
## Forecast Discussion

- Precip:** Favoring dry conditions for Tuesday.
- Wind:** Winds will be out of the N/NE throughout the day Tuesday. **N of Morgan's Point:** Winds will be 3 – 8 kts throughout the day. **S of Morgan's Point:** Winds will be 13-18 kts throughout the day.
- High Temps:** **N of Morgan's Point:** Mid 40s F. **S of Morgan's Point:** Mid 40s F.
- Visibility:** No visibility concerns for Tuesday.

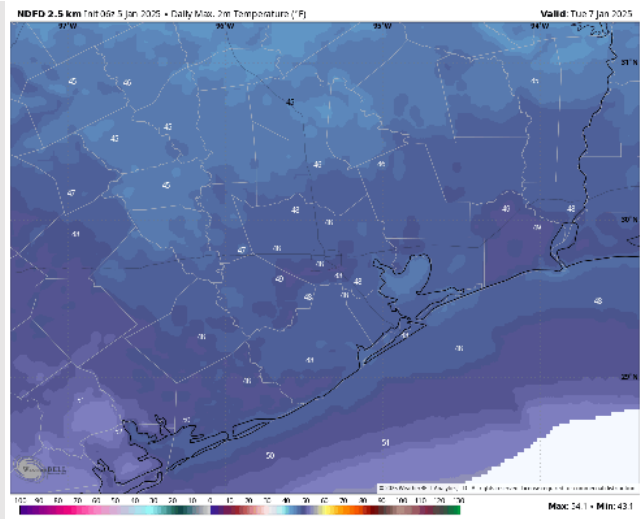
## Precip Image: 12 PM CT



Wind Speed:  
6 AM CT



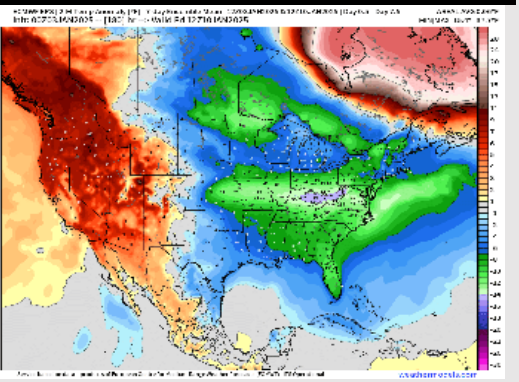
High Temps  
Tuesday



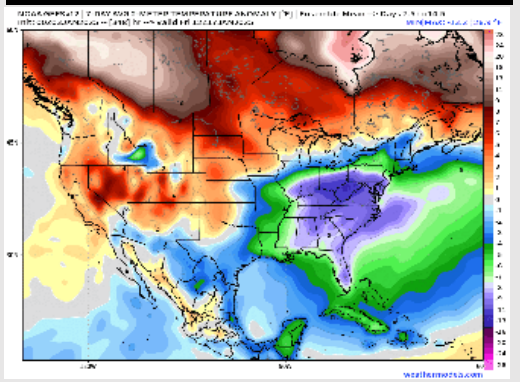
# Houston Pilots: 1/5/2025



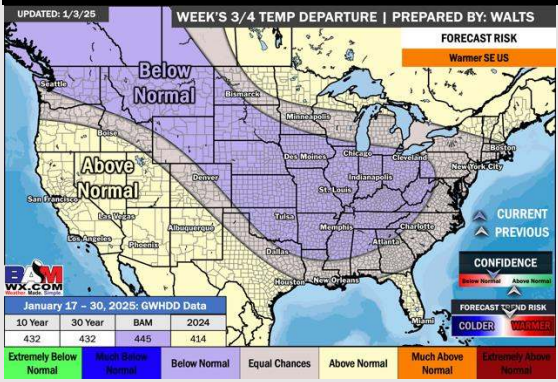
**Next 7 Day Temperature Departure**



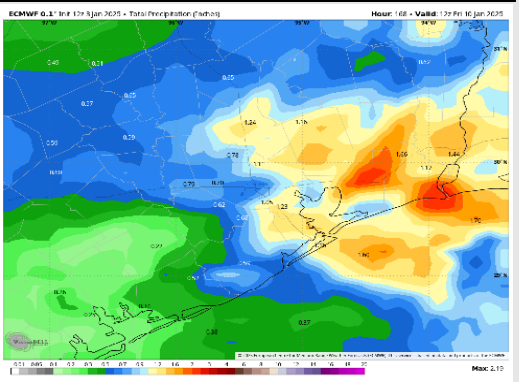
**8-14 Day Temperature Departure**



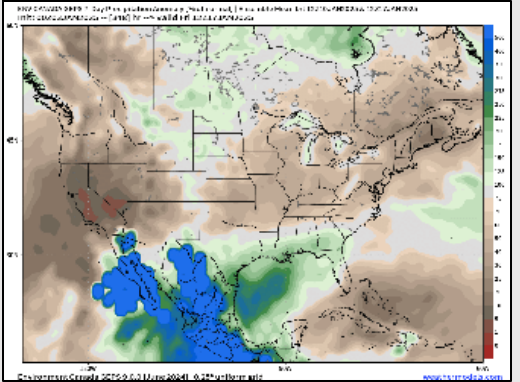
**15-30 Day Temperature Departure**



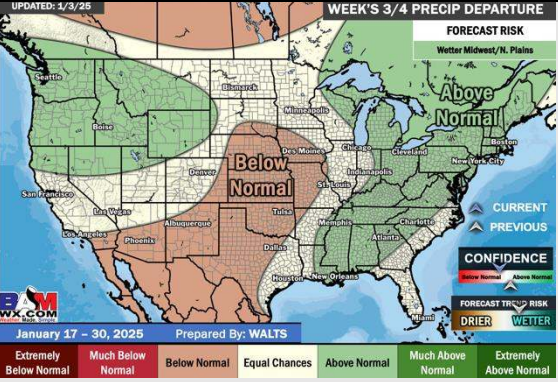
**Next 7 Day Total Precipitation**



**8-14 Day % of Average Precip.**



**15-30 Day % of Average Precip.**



- Temps are expected to be below normal for the week 1 timeframe. Rain favored over the weekend and then drier conditions in play for the start of next week.
- Below normal temperatures and above normal rainfall are expected for week 2.
- Above normal temperatures and near normal precipitation chances are expected for the weeks 3/4 timeframe.