

Severe Storms Update

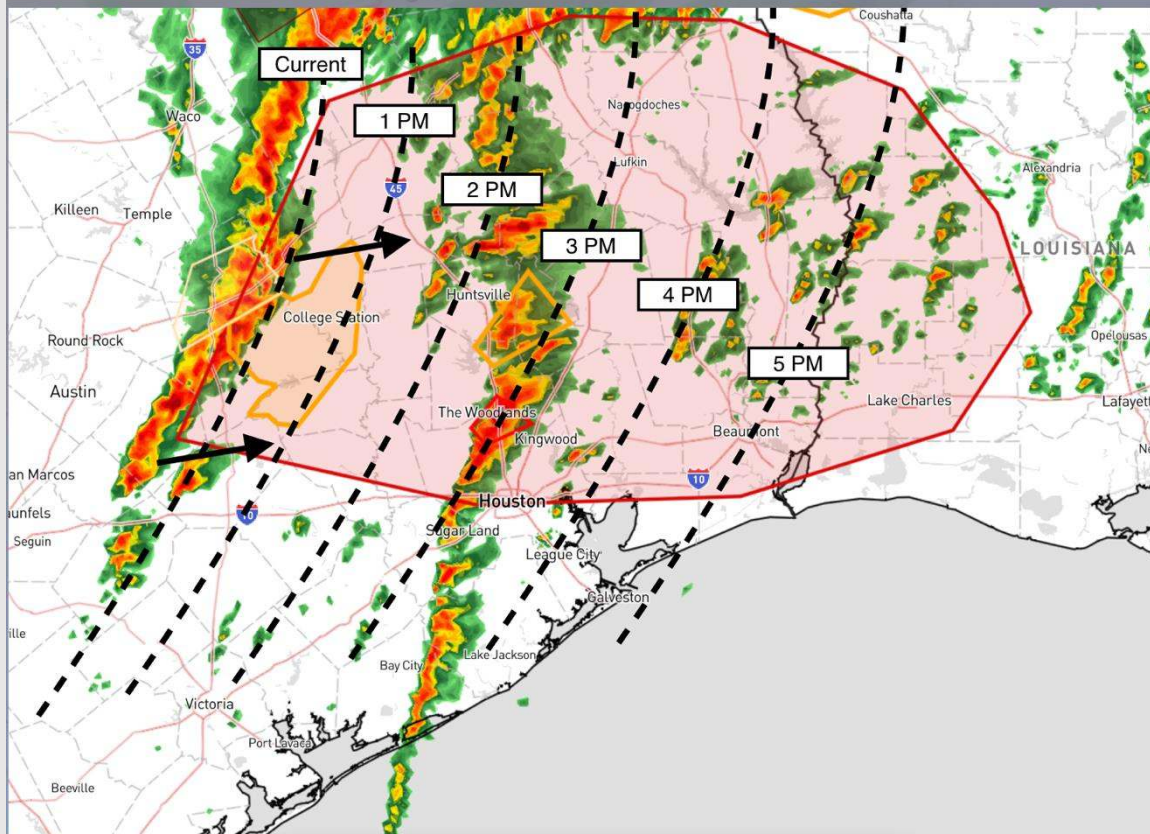


Exit Timing of Severe Risks SAT PM

NOWCAST

12:05 PM CT Saturday, December 28, 2024

Forecaster: Kipper



Current Radar: 12:00 PM CT

The graphic shows the Exit timing for a progressing line of strong to severe storms. (Houston Metro 4 PM, Galveston Bay 5 PM)

Wind gusts of 45 – 55 kts, large hail, and tornadoes are possible within this line.

Area in Red at greatest severe risk through 5 PM CT this evening.

Houston Pilots Forecast Package



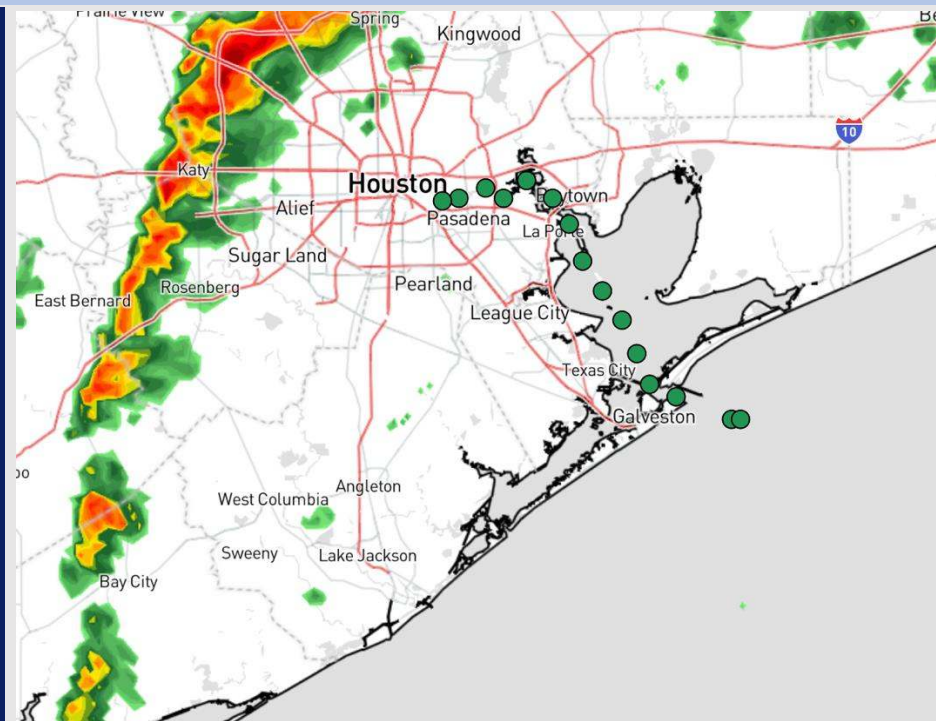
Updated: 12:00 PM CT

Saturday, December 28, 2024

Forecaster: Adam Feick

Weather Headlines

- **Strong-to-severe storms will be possible through the rest of the day. All modes of severe weather are on the table.**
- **Isolated sea fog will be possible 4 AM – 11 AM SUN**
- **Drier conditions are favored to start next week.**



Current Radar: 11:30 AM CT

As always, please do not hesitate to reach out to us with any forecast questions at **(317)-560-8122**. Press **1** for forecast questions.

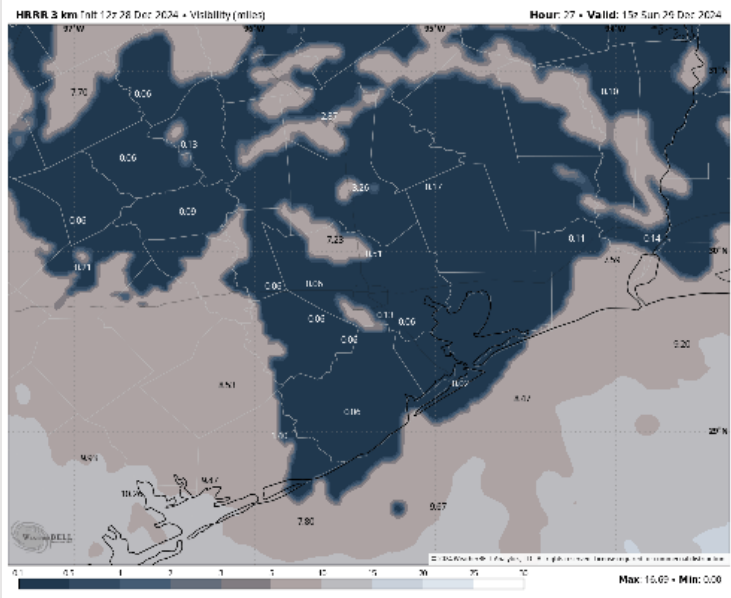
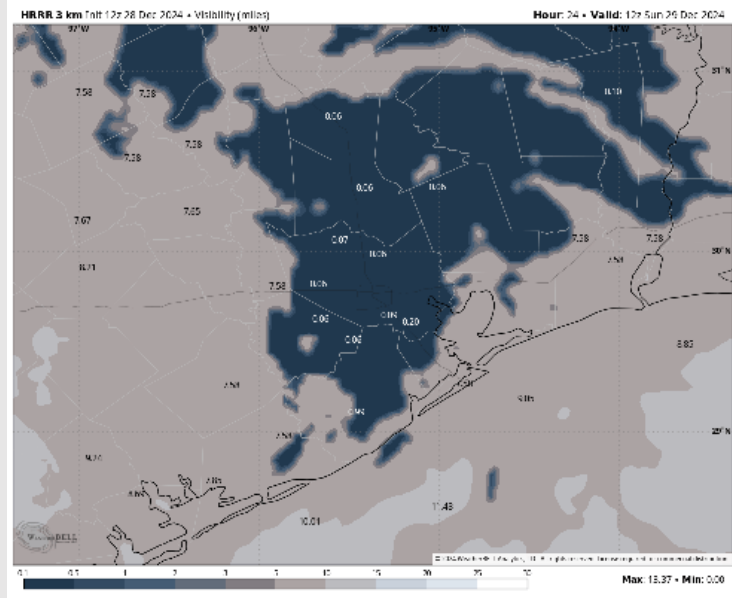
You can also access real-time forecast updates and 24/7 meteorological chat assistance on your [Clarity](#) app. Click [here](#) for login assistance.



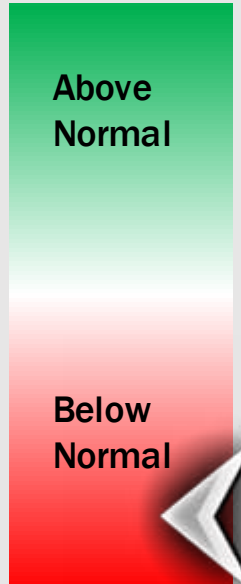
Houston Pilots Visibility Report



6 AM CST SUN VISIBILITY 9 AM CST SUN VISIBILITY



Confidence



TIMEFRAME DISCUSSED	THREAT
4 AM to 11 AM SUN	Low

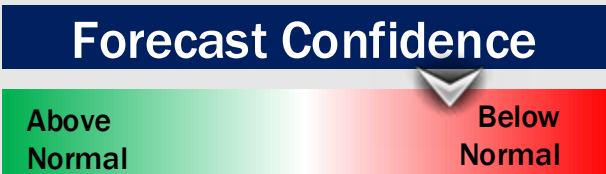
- Isolated pockets of fog will be possible for all stations. Confidence is below normal on the exact coverage of fog.
- Visibilities of less than 2 miles will be possible in an isolated fashion.
- The greatest timeframe of risk is going to be between 5 – 8 AM on Sunday.
- Any fog that develops should burn off by 11 AM SUN at the latest for all stations.

Houston Pilots Extended Range Visibility Report



Tuesday 12/31/24

Monitoring for a low-end, isolated sea fog risk for Tuesday AM. Confidence is low.



Thursday 1/2/25

Not favoring any fog concerns for Thursday.



Wednesday 1/1/25

Not favoring any fog concerns for Wednesday.



Chance for Fog	
Tuesday AM	Low
Tuesday PM	Unlikely
Wednesday AM	Unlikely
Wednesday PM	Unlikely
Thursday AM	Unlikely
Thursday PM	Unlikely

Houston Pilots Visibility Chart (miles)



Forecast Confidence



Visibility	Sat 1 pm	Sat 2 pm	Sat 3 pm	Sat 4 pm	Sat 5 pm	Sat 6 pm	Sat 7 pm	Sat 8 pm	Sat 9 pm	Sat 10 pm	Sat 11 pm	Sun 12 am	Sun 1 am	Sun 2 am	Sun 3 am	Sun 4 am	Sun 5 am	Sun 6 am	Sun 7 am	Sun 8 am	Sun 9 am	Sun 10 am	Sun 11 am	Sun 12 pm
Houston Pilots N - 610 Bridge	10	10	10	10	10	10	10	10	10	9	9	9	9	9	10	10	10	8	4.9	0.7	0.2	6.9	10	10
Houston Pilots M - Kinder 1	10	10	10	10	10	7.9	10	10	10	9	7.9	7.9	7.9	9	10	10	10	8	4.9	0.7	0.2	6.9	10	10
Houston Pilots L - Greens Bayou	10	9	10	10	10	7.9	10	10	10	9	7.9	6.9	6.9	7.9	10	10	9	6.9	3.9	0.7	2.9	6.9	10	10
Houston Pilots K - Shell Crude	9	9	10	10	10	7.9	10	10	10	7.9	7.9	6.9	6.9	6.9	9	10	7.9	6.9	3.9	0.7	2.9	6.9	10	10
Houston Pilots J - Lynchburg Ferries	10	9	10	10	10	7.9	10	10	10	9	7.9	6.9	6.9	6.9	9	10	7.9	6.9	1.1	0.5	0.5	6.9	10	10
Houston Pilots I - Exxon 3	9	9	10	10	10	6.9	10	10	9	7.9	6.9	6.9	6.9	6.9	7.9	9	6.9	5.9	3.9	0.7	2.9	6.9	10	10
Houston Pilots H - Morgans Point	7.9	9	9	10	10	10	10	10	9	7.9	6.9	6.9	6.9	6.9	7.9	9	6.9	5.9	3.9	1.1	3.9	6.9	10	10
Houston Pilots G - 75/76	6.9	7.9	6.9	7.9	9	10	6.9	10	7.9	6.9	6.9	6.9	6.9	6.9	6.9	6.9	6.9	5.9	4.9	4.9	3.9	6.9	4	8
Houston Pilots F - 63/64	6.9	7.9	6.9	7.9	9	10	6.9	10	7.9	6.9	6.9	6.9	6.9	6.9	6.9	6.9	6.9	5.9	4.9	4.9	3.9	6.9	2	8
Houston Pilots E - 51/52	6.9	7.9	6.9	7.9	9	9	6.9	10	7.9	6.9	6.9	6.9	6.9	6.9	6.9	6.9	6.9	5.9	5.9	4.9	4.9	6.9	0.2	6
Houston Pilots D - 37/38	6.9	7.9	6.9	6.9	9	9	9	9	7.9	6.9	6.9	6.9	6.9	6.9	6.9	6.9	6.9	6.9	5.9	5.9	4.9	6.9	0.2	4
Houston Pilots C - 25/26	6.9	7.9	6.9	6.9	9	9	10	9	6.9	6.9	6.9	6.9	6.9	6.9	6.9	6.9	6.9	6.9	6.9	5.9	4.9	6.9	0.5	4
Houston Pilots B - 11/12	6.9	6.9	6.9	6.9	9	9	10	6.9	6.9	6.9	6.9	6.9	6.9	6.9	6.9	6.9	6.9	6.9	6.9	5.9	4.9	6.9	1.6	4
Houston Pilots A - 1 & 2 Bravo	6.9	6.9	6.9	6.9	6.9	7.9	9	6.9	6.9	6.9	6.9	6.9	6.9	6.9	6.9	6.9	6.9	6.9	6.9	6.9	5.9	6.9	2	2.5

NOTE: This is automated data that may/may not agree with the official BAM thinking that's found on the daily slides or special visibility report slides. This data should be used as a guide only

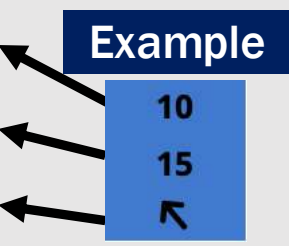
Houston Pilots Wind Chart



Forecast Confidence



Sustained wind 10 Knots
Gusts 15 Knots
Wind from the SE



Wind	Sat 1 pm	Sat 2 pm	Sat 3 pm	Sat 4 pm	Sat 5 pm	Sat 6 pm	Sat 7 pm	Sat 8 pm	Sat 9 pm	Sat 10 pm	Sat 11 pm	Sun 12 am	Sun 1 am	Sun 2 am	Sun 3 am	Sun 4 am	Sun 5 am	Sun 6 am	Sun 7 am	Sun 8 am	Sun 9 am	Sun 10 am	Sun 11 am	Sun 12 pm
Houston Pilots N - 610 Bridge	14 ↑	13 ↑	13 ↑	13 ↑	10 ↑	9 ↑	7 ↑	6 ↑	6 ↑	6 ↑	6 ↑	6 ↑	6 ↑	6 ↑	6 ↑	6 ↑	5 ↑	5 ↑	3 ↑	3 ↑	3 ↑	3 ↑	3 ↑	3 ↑
Houston Pilots M - Kinder 1	14 ↑	13 ↑	13 ↑	13 ↑	10 ↑	9 ↑	7 ↑	6 ↑	6 ↑	6 ↑	6 ↑	6 ↑	6 ↑	6 ↑	6 ↑	6 ↑	5 ↑	5 ↑	3 ↑	3 ↑	3 ↑	3 ↑	3 ↑	3 ↑
Houston Pilots L - Greens Bayou	13 ↑	13 ↑	13 ↑	13 ↑	10 ↑	9 ↑	7 ↑	6 ↑	6 ↑	6 ↑	6 ↑	6 ↑	6 ↑	6 ↑	6 ↑	6 ↑	5 ↑	5 ↑	3 ↑	3 ↑	3 ↑	3 ↑	3 ↑	3 ↑
Houston Pilots K - Shell Crude	13 ↑	13 ↑	13 ↑	13 ↑	10 ↑	9 ↑	7 ↑	6 ↑	6 ↑	6 ↑	6 ↑	6 ↑	6 ↑	6 ↑	6 ↑	6 ↑	5 ↑	5 ↑	3 ↑	3 ↑	3 ↑	3 ↑	3 ↑	3 ↑
Houston Pilots J - Lynchburg Ferries	13 ↑	14 ↑	13 ↑	13 ↑	12 ↑	9 ↑	7 ↑	6 ↑	6 ↑	5 ↑	6 ↑	6 ↑	6 ↑	6 ↑	5 ↑	5 ↑	5 ↑	3 ↑	3 ↑	3 ↑	3 ↑	3 ↑	3 ↑	3 ↑
Houston Pilots I - Exxon 3	15 ↑	15 ↑	15 ↑	15 ↑	14 ↑	13 ↑	10 ↑	9 ↑	8 ↑	8 ↑	8 ↑	8 ↑	8 ↑	8 ↑	8 ↑	8 ↑	8 ↑	7 ↑	7 ↑	6 ↑	6 ↑	6 ↑	5 ↑	5 ↑
Houston Pilots H - Morgans Point	14 ↑	15 ↑	15 ↑	15 ↑	13 ↑	12 ↑	10 ↑	9 ↑	8 ↑	8 ↑	8 ↑	8 ↑	8 ↑	8 ↑	8 ↑	8 ↑	7 ↑	7 ↑	6 ↑	6 ↑	6 ↑	5 ↑	5 ↑	
Houston Pilots G - 75/76	15 ↑	15 ↑	15 ↑	16 ↑	15 ↑	13 ↑	10 ↑	10 ↑	9 ↑	8 ↑	8 ↑	9 ↑	9 ↑	9 ↑	9 ↑	9 ↑	8 ↑	8 ↑	8 ↑	7 ↑	6 ↑	6 ↑	6 ↑	5 ↑
Houston Pilots F - 63/64	15 ↑	15 ↑	16 ↑	16 ↑	15 ↑	13 ↑	10 ↑	10 ↑	9 ↑	8 ↑	8 ↑	8 ↑	8 ↑	8 ↑	8 ↑	9 ↑	9 ↑	8 ↑	8 ↑	8 ↑	7 ↑	7 ↑	6 ↑	5 ↑
Houston Pilots E - 51/52	15 ↑	15 ↑	16 ↑	16 ↑	15 ↑	13 ↑	10 ↑	10 ↑	9 ↑	8 ↑	8 ↑	8 ↑	8 ↑	8 ↑	8 ↑	8 ↑	9 ↑	8 ↑	8 ↑	8 ↑	7 ↑	7 ↑	6 ↑	5 ↑
Houston Pilots D - 37/38	15 ↑	15 ↑	16 ↑	16 ↑	15 ↑	13 ↑	10 ↑	10 ↑	9 ↑	8 ↑	8 ↑	8 ↑	8 ↑	8 ↑	8 ↑	8 ↑	9 ↑	8 ↑	8 ↑	8 ↑	7 ↑	7 ↑	6 ↑	5 ↑
Houston Pilots C - 25/26	15 ↑	15 ↑	16 ↑	15 ↑	15 ↑	13 ↑	10 ↑	10 ↑	9 ↑	8 ↑	8 ↑	8 ↑	8 ↑	8 ↑	8 ↑	8 ↑	8 ↑	8 ↑	8 ↑	8 ↑	7 ↑	7 ↑	6 ↑	5 ↑
Houston Pilots B - 11/12	15 ↑	15 ↑	15 ↑	15 ↑	14 ↑	13 ↑	10 ↑	9 ↑	8 ↑	8 ↑	8 ↑	7 ↑	7 ↑	8 ↑	8 ↑	8 ↑	8 ↑	8 ↑	8 ↑	8 ↑	7 ↑	7 ↑	7 ↑	6 ↑
Houston Pilots A - 1 & 2 Bravo	16 ↑	16 ↑	17 ↑	17 ↑	16 ↑	15 ↑	14 ↑	13 ↑	12 ↑	10 ↑	10 ↑	9 ↑	9 ↑	9 ↑	9 ↑	10 ↑	10 ↑	10 ↑	10 ↑	10 ↑	9 ↑	8 ↑	8 ↑	7 ↑

NOTE: This is automated data that may/may not agree with the official BAM thinking that's found on the daily slides. This data should be used as a guide only.

Houston Pilots: SAT. 12/28/2024



Forecast Discussion

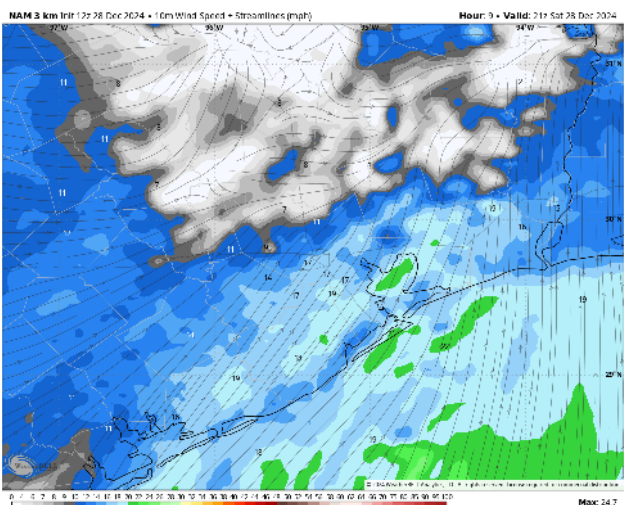
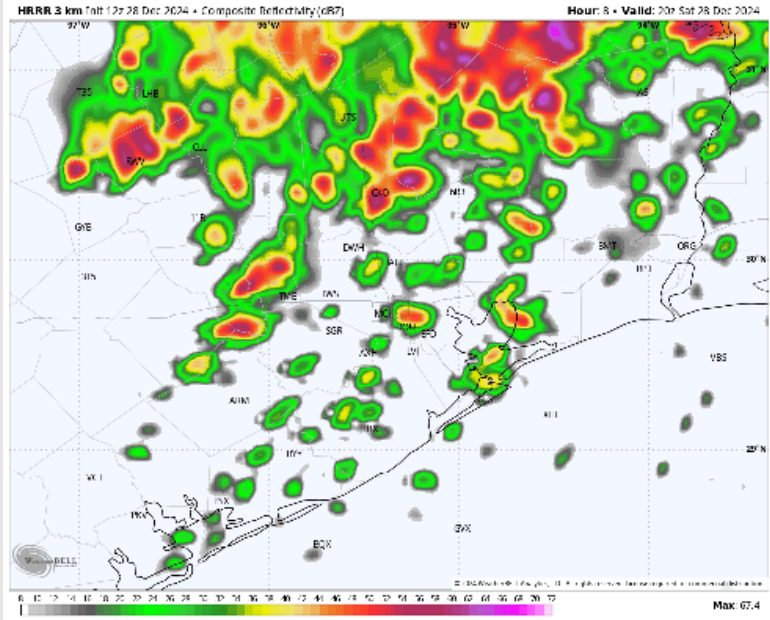
Precip: Scattered showers and storms (50-60%) are favored through 7 PM. A few strong to severe storms with large hail, 45-50 + kts wind gusts, and tomadoes will be possible.

Wind: Winds will be variable throughout the rest of the day. **N of Morgan's Point:** Winds will be at 10 – 17 kts through 7 PM before returning to 2 – 7 kts for the rest of the day. **S of Morgan's Point:** Winds will be at 13 - 21 kts through 7 PM before decreasing to 5 – 10 kts. **A few non-thunderstorm gusts of 25 – 30 kts will be possible for all Stations through 7 PM.**

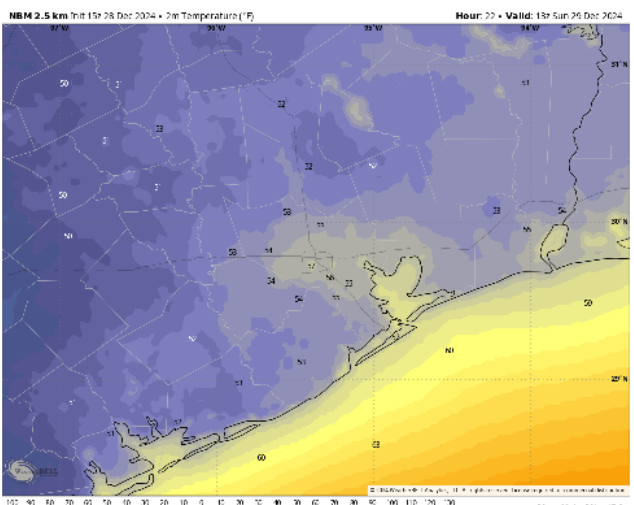
Low Temps: **N of Morgan's Point:** Upper 50s F. **S of Morgan's Point:** Lower 60s F.

Visibility: Visibility may be reduced under downpours from storms through 7 PM.

Precip Image: 3 PM CT



Wind Speed:
3 PM CT



Low Temps
Today

Houston Pilots: SUN. 12/29/2024



Forecast Discussion

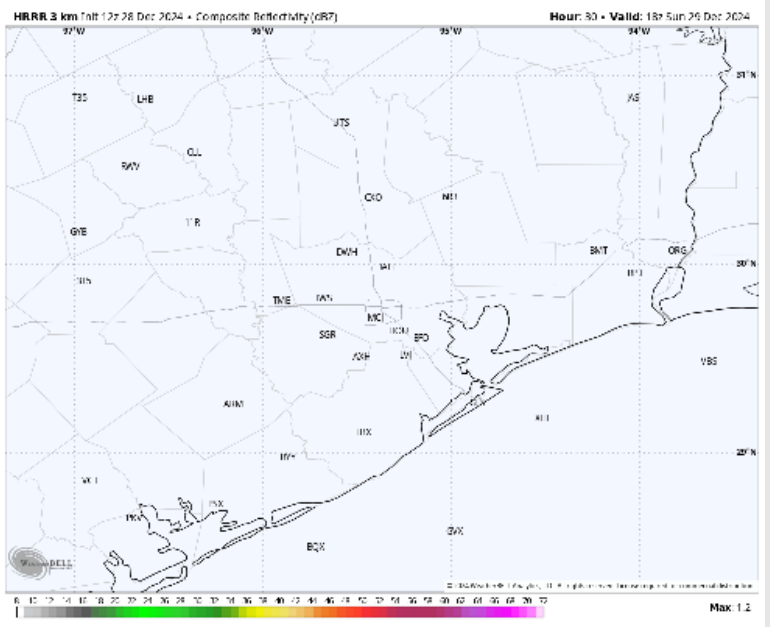
Precip: Favoring dry conditions throughout the day on Sunday.

Wind: Winds will be out of the NW through 7 PM before shifting to be out of the SW for the rest of the day. **N of Morgan's Point:** Winds will be 2 - 6kts throughout Sunday. **S of Morgan's Point:** Winds will be at 3 - 9 kts throughout the day Sunday.

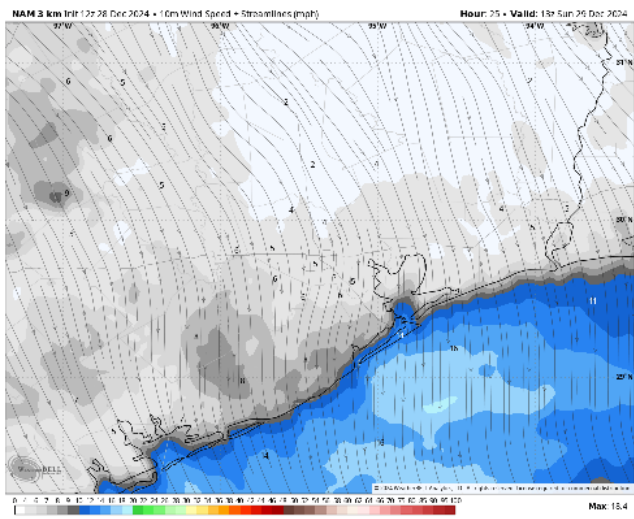
High Temps: **N of Morgan's Point:** Upper 70s F. **S of Morgan's Point:** Mid-60s F.

Visibility: Low confidence for Isolated sea fog SUN AM. Check visibility for details.

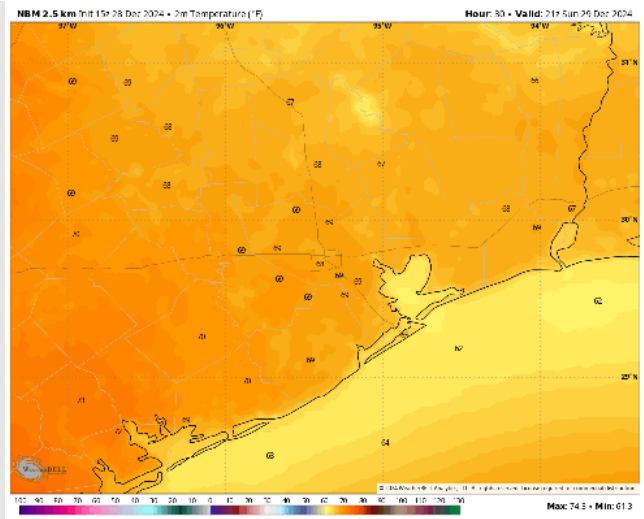
Precip Image: 12 PM CT



Wind Speed:
7 AM CT



High Temps
Sunday



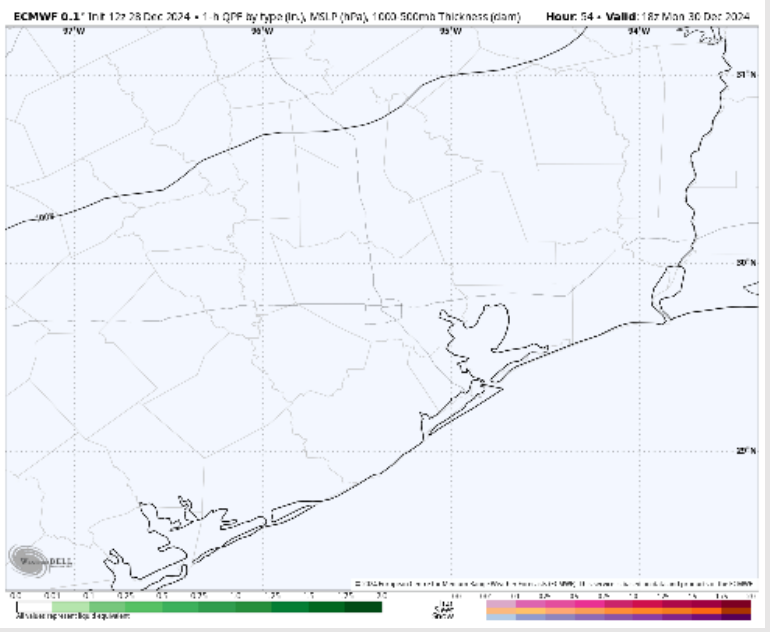
Houston Pilots: MON. 12/30/2024



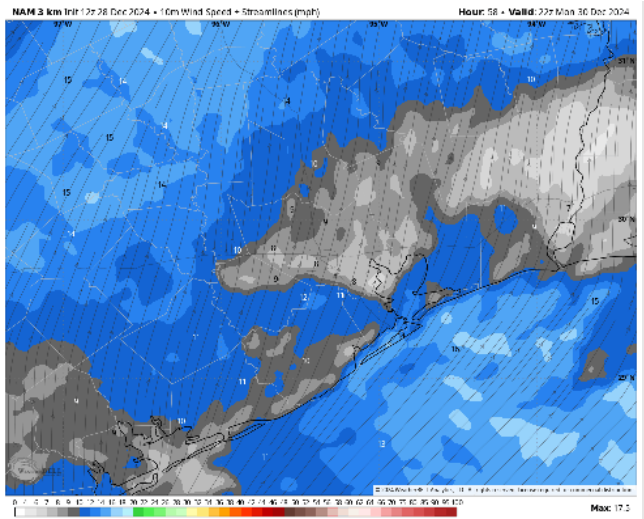
Forecast Discussion

- Precip:** Favoring dry conditions for the day on Monday.
- Wind:** Winds will be out of the S/SW throughout the day on Monday. **N of Morgan's Point:** Winds will be at 6 – 11 kts throughout the day Monday. **S of Morgan's Point:** Winds will be at 3 – 8 kts through 9 AM before increasing to 11 – 16 kts for the rest of Monday
- High Temps:** **N of Morgan's Point:** Upper-70s F. **S of Morgan's Point:** Upper 60s F
- Visibility:** Not favoring any visibility concerns for Monday.

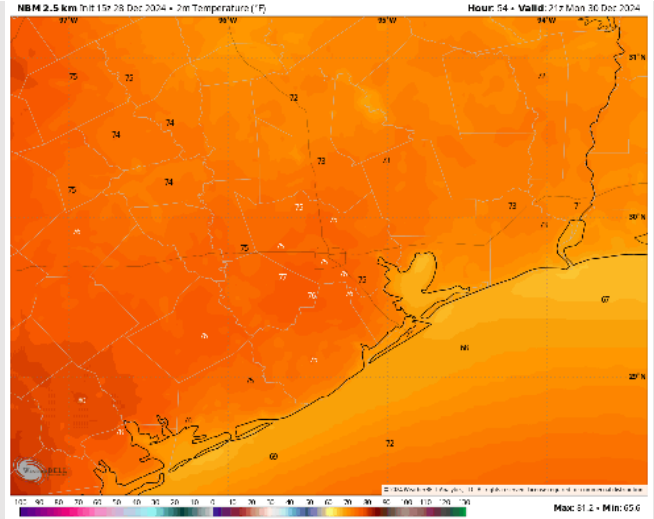
Precip Image: 12 PM CT



Wind Speed
4 PM CT



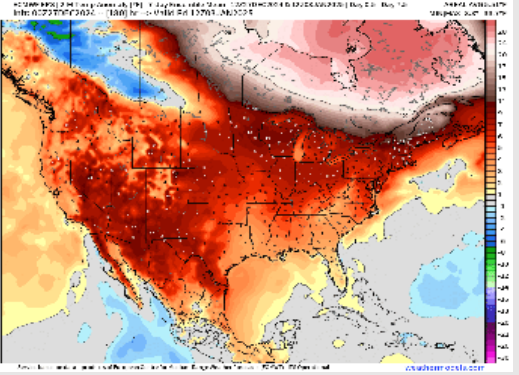
High Temps
Monday



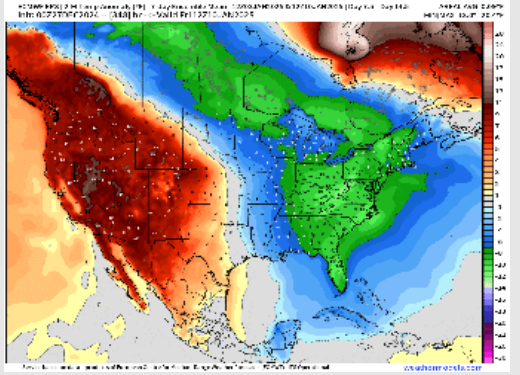
Houston Pilots: 12/28/24



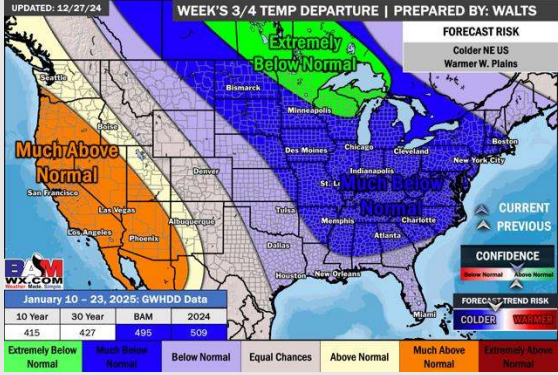
Next 7 Day Temperature Departure



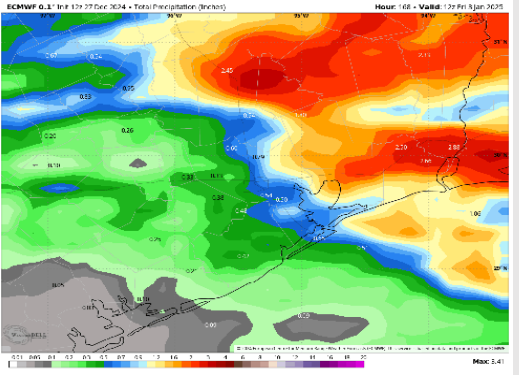
8-14 Day Temperature Departure



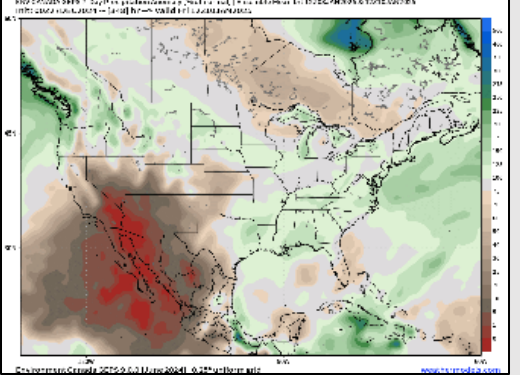
15-30 Day Temperature Departure



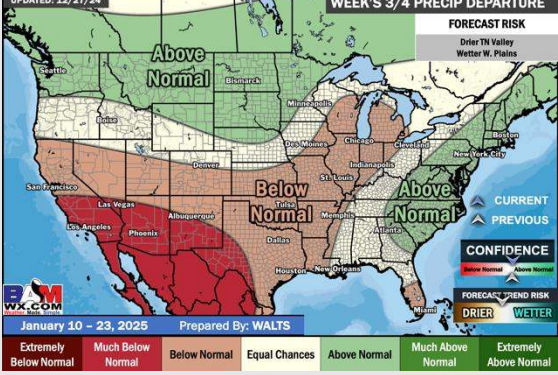
Next 7 Day Total Precipitation



8-14 Day % of Average Precip.



15-30 Day % of Average Precip.



- Temps are expected to be much above normal for the week 1 timeframe. Rain chances continue through the weekend with rain tapering off by next week.
- Near normal temperatures and near normal rainfall are expected for week 2.
- Below normal temperatures and below normal precipitation chances are expected for the weeks 3/4 timeframe.