

Houston Pilots Forecast Package



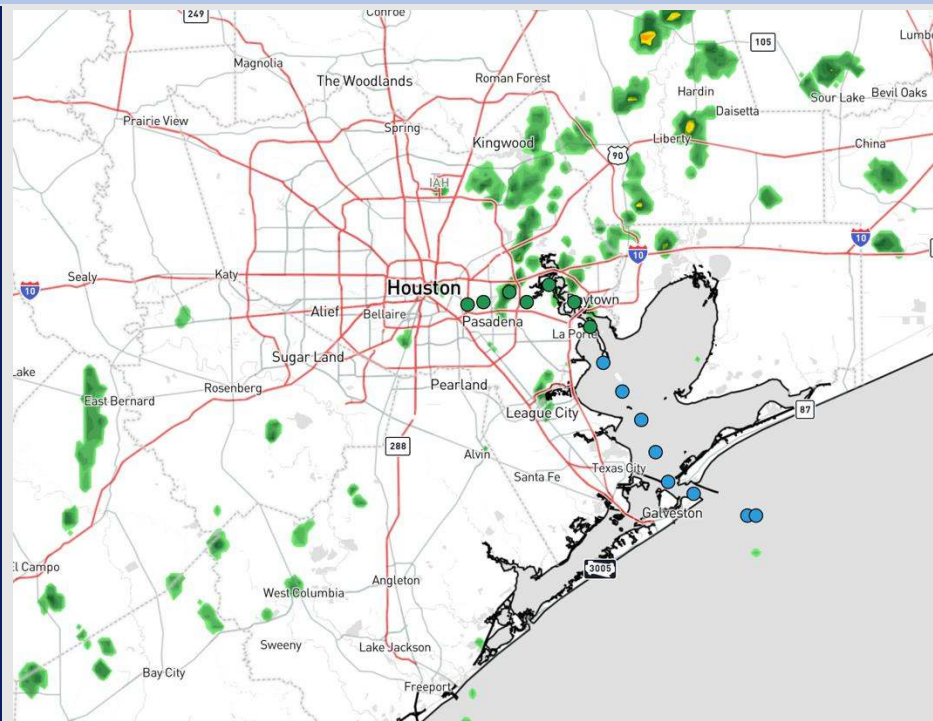
Updated: 4:10 AM CT

Saturday, December 28, 2024

Forecaster: Adam Feick

Weather Headlines

- **Strong-to-severe storms will return today. All modes of severe weather are on the table.**
- **Patchy to widespread dense fog is expected to continue to develop this morning.**
- **Drier conditions are favored to start next week.**



Current Radar: 4:05 AM CT

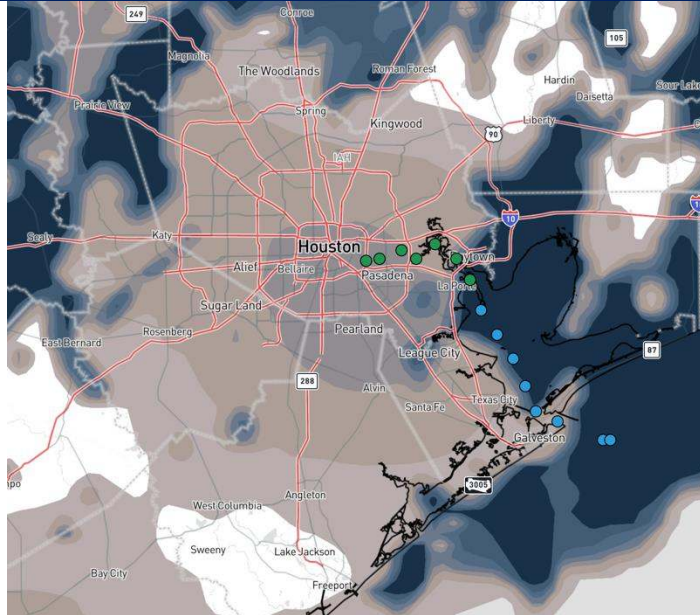
As always, please do not hesitate to reach out to us with any forecast questions at **(317)-560-8122**. Press 1 for forecast questions.

You can also access real-time forecast updates and 24/7 meteorological chat assistance on your [Clarity](#) app. Click [here](#) for login assistance.

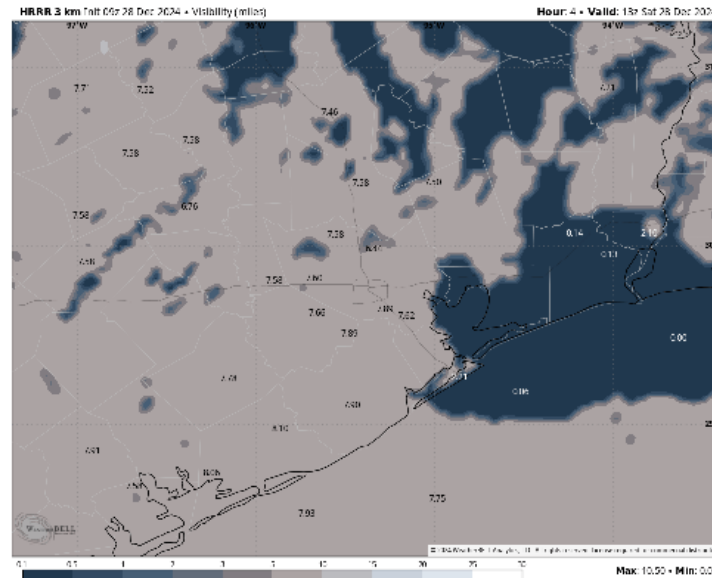


Houston Pilots Visibility Report

CURRENT VISIBILITY 4:05 AM CT SAT



7 AM CT SAT VISIBILITY



Confidence

Above
Normal

Below
Normal

TIMEFRAME
DISCUSSED

THREAT

Current – 12 PM SAT

High

- Pockets of Fog / Mist will continue to impact stations N of Morgan's point this AM through 11 AM ahead of showers and thunderstorms.
- Sea Fog will continue to impact all stations S of Morgan's Point through 11 AM prior to showers and storms.
- Favoring the peak fog coverage and density (0.25-mile visibility or less) to occur through 7 AM. After 7 AM, coverage becomes patchier due to scattered showers and storms working in. Fog isn't expected to clear out until 11 AM – 12 PM.

Houston Pilots Extended Range Visibility Report



Tuesday 12/31/24

Monitoring for a low-end, isolated sea fog risk for Tuesday AM. Confidence is low.

Forecast Confidence



Thursday 1/2/25

Not favoring any fog concerns for Thursday.

Forecast Confidence



Wednesday 1/1/25

Not favoring any fog concerns for Wednesday.

Forecast Confidence



Chance for Fog

| | |
|--------------|----------|
| Tuesday AM | Low |
| Tuesday PM | Unlikely |
| Wednesday AM | Unlikely |
| Wednesday PM | Unlikely |
| Thursday AM | Unlikely |
| Thursday PM | Unlikely |

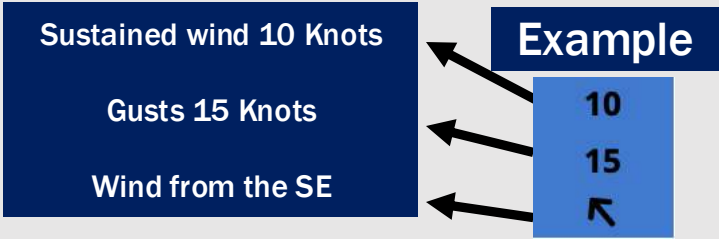
Houston Pilots Visibility Chart (miles)



| Visibility | Sat 1 am | Sat 2 am | Sat 3 am | Sat 4 am | Sat 5 am | Sat 6 am | Sat 7 am | Sat 8 am | Sat 9 am | Sat 10 am | Sat 11 am | Sat 12 pm | Sat 1 pm | Sat 2 pm | Sat 3 pm | Sat 4 pm | Sat 5 pm | Sat 6 pm | Sat 7 pm | Sat 8 pm | Sat 9 pm | Sat 10 pm | Sat 11 pm | Sun 12 am |
|--------------------------------------|----------|----------|----------|----------|----------|----------|----------|----------|----------|-----------|-----------|-----------|----------|----------|----------|----------|----------|----------|----------|----------|----------|-----------|-----------|-----------|
| Houston Pilots N - 610 Bridge | 3.9 | 3.9 | 3.9 | 3.9 | 3.9 | 3.9 | 3.9 | 3.9 | 3.9 | 5.9 | 6.9 | 7.9 | 9 | 9 | 10 | 10 | 10 | 10 | 10 | 10 | 10 | 10 | 10 | 10 |
| Houston Pilots M - Kinder 1 | 3.9 | 3.9 | 3.9 | 3.9 | 3.9 | 3.9 | 3.9 | 3.9 | 3.9 | 5.9 | 6.9 | 7.9 | 9 | 9 | 10 | 10 | 10 | 10 | 10 | 10 | 10 | 10 | 10 | 10 |
| Houston Pilots L - Greens Bayou | 4.9 | 3.9 | 3.9 | 3.9 | 3.9 | 3.9 | 3.9 | 3.9 | 3.9 | 5.9 | 7.9 | 7.9 | 9 | 9 | 10 | 10 | 10 | 10 | 10 | 10 | 10 | 10 | 10 | 10 |
| Houston Pilots K - Shell Crude | 3.9 | 3.9 | 3.9 | 3.9 | 3.9 | 3.9 | 3.9 | 3.9 | 3.9 | 5.9 | 7.9 | 7.9 | 9 | 9 | 10 | 10 | 10 | 10 | 10 | 10 | 10 | 10 | 10 | 10 |
| Houston Pilots J - Lynchburg Ferries | 2 | 1.6 | 1.1 | 3.9 | 2 | 3.9 | 3.9 | 3.9 | 3.9 | 5.9 | 7.9 | 7.9 | 9 | 9 | 10 | 10 | 10 | 10 | 10 | 10 | 10 | 10 | 10 | 10 |
| Houston Pilots I - Exxon 3 | 0.3 | 0.3 | 0.3 | 0.8 | 0.3 | 1.1 | 1.6 | 3.9 | 3.9 | 5.9 | 7.9 | 7.9 | 7.9 | 9 | 10 | 10 | 10 | 10 | 10 | 10 | 10 | 10 | 10 | 10 |
| Houston Pilots H - Morgans Point | 0.3 | 0.3 | 0.3 | 0.3 | 0.3 | 0.3 | 0.5 | 0.8 | 2.5 | 5.9 | 7.9 | 7.9 | 7.9 | 9 | 10 | 10 | 10 | 10 | 10 | 10 | 10 | 10 | 10 | 10 |
| Houston Pilots G - 75/76 | 0.3 | 0.3 | 0.3 | 0.3 | 0.3 | 0.3 | 0.3 | 0.3 | 0.3 | 2.9 | 6.9 | 6.9 | 5.9 | 6.9 | 6.9 | 6.9 | 7.9 | 10 | 10 | 10 | 9 | 6.9 | 7 | 7 |
| Houston Pilots F - 63/64 | 0.3 | 0.3 | 0.3 | 0.3 | 0.3 | 0.3 | 0.5 | 0.3 | 0.3 | 2.9 | 6.9 | 6.9 | 5.9 | 6.9 | 5.9 | 6.9 | 6.9 | 7.9 | 9 | 9 | 6.9 | 6.9 | 7 | 6 |
| Houston Pilots E - 51/52 | 0.3 | 0.3 | 0.3 | 0.3 | 0.3 | 0.5 | 0.5 | 1.6 | 1.1 | 5.9 | 6.9 | 5.9 | 5.9 | 6.9 | 5.9 | 6.9 | 6.9 | 7.9 | 9 | 7.9 | 6.9 | 5.9 | 6 | 5 |
| Houston Pilots D - 37/38 | 0.5 | 0.3 | 0.3 | 0.3 | 0.3 | 0.5 | 3.9 | 2 | 2.9 | 5.9 | 6.9 | 3.9 | 5.9 | 6.9 | 5.9 | 5.9 | 6.9 | 7.9 | 7.9 | 7.9 | 6.9 | 5.9 | 6 | 5 |
| Houston Pilots C - 25/26 | 1.6 | 0.3 | 0.3 | 0.3 | 0.3 | 1.1 | 3.9 | 3.9 | 2.9 | 5.9 | 6.9 | 3.9 | 4.9 | 6.9 | 5.9 | 5.9 | 6.9 | 7.9 | 7.9 | 7.9 | 6.9 | 5.9 | 6 | 4 |
| Houston Pilots B - 11/12 | 1.1 | 0.3 | 0.3 | 0.3 | 0.3 | 0.5 | 0.5 | 1.6 | 1.6 | 4.9 | 6.9 | 3.9 | 4.9 | 6.9 | 5.9 | 5.9 | 6.9 | 6.9 | 7.9 | 6.9 | 6.9 | 4.9 | 6 | 5 |
| Houston Pilots A - 1 & 2 Bravo | 1.1 | 0.3 | 0.3 | 0.3 | 0.3 | 0.5 | 0.5 | 0.5 | 0.3 | 3.9 | 5.9 | 4.9 | 3.9 | 3.9 | 3.9 | 4.9 | 4.9 | 5.9 | 6.9 | 6.9 | 5.9 | 4.9 | 7 | 5 |

NOTE: This is automated data that may/may not agree with the official BAM thinking that's found on the daily slides or special visibility report slides. This data should be used as a guide only

Houston Pilots Wind Chart



| Wind | Sat 1 am | Sat 2 am | Sat 3 am | Sat 4 am | Sat 5 am | Sat 6 am | Sat 7 am | Sat 8 am | Sat 9 am | Sat 10 am | Sat 11 am | Sat 12 pm | Sat 1 pm | Sat 2 pm | Sat 3 pm | Sat 4 pm | Sat 5 pm | Sat 6 pm | Sat 7 pm | Sat 8 pm | Sat 9 pm | Sat 10 pm | Sat 11 pm | Sun 12 am |
|--------------------------------------|----------|----------|----------|----------|----------|----------|----------|----------|----------|-----------|-----------|-----------|----------|----------|----------|----------|----------|----------|----------|----------|----------|-----------|-----------|-----------|
| Houston Pilots N - 610 Bridge | 6 | 6 | 6 | 5 | 6 | 6 | 6 | 7 | 8 | 8 | 10 | 13 | 13 | 13 | 13 | 13 | 10 | 9 | 7 | 6 | 6 | 6 | 6 | 6 |
| | 13 | 13 | 12 | 12 | 12 | 12 | 13 | 15 | 16 | 18 | 22 | 24 | 26 | 26 | 26 | 24 | 22 | 18 | 15 | 15 | 14 | 13 | 14 | 14 |
| | ↖ | ↖ | ↖ | ↖ | ↖ | ↖ | ↖ | ↖ | ↖ | ↖ | ↖ | ↖ | ↖ | ↖ | ↖ | ↖ | ↖ | ↖ | ↖ | ↖ | ↖ | ↖ | ↖ | ↖ |
| Houston Pilots M - Kinder 1 | 6 | 6 | 6 | 6 | 6 | 6 | 6 | 6 | 8 | 8 | 10 | 13 | 13 | 13 | 13 | 13 | 10 | 9 | 7 | 7 | 6 | 6 | 6 | 6 |
| | 13 | 13 | 12 | 12 | 12 | 12 | 13 | 15 | 16 | 18 | 21 | 24 | 25 | 26 | 26 | 24 | 22 | 18 | 15 | 14 | 14 | 13 | 14 | 14 |
| | ↖ | ↖ | ↖ | ↖ | ↖ | ↖ | ↖ | ↖ | ↖ | ↖ | ↖ | ↖ | ↖ | ↖ | ↖ | ↖ | ↖ | ↖ | ↖ | ↖ | ↖ | ↖ | ↖ | ↖ |
| Houston Pilots L - Greens Bayou | 6 | 6 | 6 | 6 | 6 | 6 | 6 | 6 | 7 | 8 | 10 | 13 | 13 | 13 | 13 | 12 | 10 | 9 | 7 | 6 | 6 | 6 | 6 | 6 |
| | 13 | 13 | 12 | 12 | 12 | 12 | 13 | 15 | 16 | 17 | 21 | 24 | 25 | 26 | 25 | 24 | 21 | 17 | 15 | 14 | 14 | 13 | 14 | 14 |
| | ↖ | ↖ | ↖ | ↖ | ↖ | ↖ | ↖ | ↖ | ↖ | ↖ | ↖ | ↖ | ↖ | ↖ | ↖ | ↖ | ↖ | ↖ | ↖ | ↖ | ↖ | ↖ | ↖ | ↖ |
| Houston Pilots K - Shell Crude | 6 | 6 | 6 | 6 | 6 | 6 | 6 | 6 | 8 | 8 | 10 | 13 | 13 | 13 | 13 | 13 | 10 | 9 | 7 | 7 | 6 | 6 | 6 | 6 |
| | 13 | 13 | 12 | 12 | 12 | 13 | 13 | 15 | 16 | 17 | 21 | 24 | 24 | 25 | 25 | 24 | 21 | 17 | 15 | 14 | 13 | 13 | 13 | 14 |
| | ↖ | ↖ | ↖ | ↖ | ↖ | ↖ | ↖ | ↖ | ↖ | ↖ | ↖ | ↖ | ↖ | ↖ | ↖ | ↖ | ↖ | ↖ | ↖ | ↖ | ↖ | ↖ | ↖ | ↖ |
| Houston Pilots J - Lynchburg Ferries | 6 | 6 | 5 | 5 | 5 | 6 | 6 | 6 | 7 | 8 | 10 | 13 | 13 | 13 | 13 | 13 | 10 | 9 | 7 | 6 | 6 | 6 | 6 | 6 |
| | 12 | 12 | 12 | 12 | 12 | 12 | 13 | 15 | 16 | 17 | 21 | 23 | 24 | 25 | 25 | 23 | 21 | 17 | 15 | 14 | 13 | 12 | 13 | 13 |
| | ↖ | ↖ | ↖ | ↖ | ↖ | ↖ | ↖ | ↖ | ↖ | ↖ | ↖ | ↖ | ↖ | ↖ | ↖ | ↖ | ↖ | ↖ | ↖ | ↖ | ↖ | ↖ | ↖ | ↖ |
| Houston Pilots I - Exxon 3 | 9 | 9 | 8 | 8 | 8 | 8 | 8 | 9 | 10 | 10 | 13 | 14 | 14 | 15 | 15 | 14 | 13 | 12 | 10 | 9 | 9 | 8 | 9 | 9 |
| | 14 | 14 | 13 | 13 | 13 | 14 | 14 | 15 | 16 | 17 | 20 | 22 | 23 | 24 | 24 | 23 | 22 | 18 | 15 | 15 | 14 | 14 | 14 | 15 |
| | ↖ | ↖ | ↖ | ↖ | ↖ | ↖ | ↖ | ↖ | ↖ | ↖ | ↖ | ↖ | ↖ | ↖ | ↖ | ↖ | ↖ | ↖ | ↖ | ↖ | ↖ | ↖ | ↖ | ↖ |
| Houston Pilots H - Morgans Point | 9 | 8 | 8 | 8 | 8 | 8 | 8 | 9 | 10 | 10 | 13 | 13 | 14 | 14 | 14 | 14 | 13 | 12 | 10 | 9 | 8 | 8 | 8 | 9 |
| | 14 | 14 | 13 | 13 | 13 | 13 | 14 | 15 | 16 | 17 | 20 | 22 | 23 | 24 | 24 | 24 | 22 | 18 | 15 | 15 | 14 | 14 | 14 | 14 |
| | ↖ | ↖ | ↖ | ↖ | ↖ | ↖ | ↖ | ↖ | ↖ | ↖ | ↖ | ↖ | ↖ | ↖ | ↖ | ↖ | ↖ | ↖ | ↖ | ↖ | ↖ | ↖ | ↖ | ↖ |
| Houston Pilots G - 75/76 | 10 | 10 | 10 | 9 | 9 | 10 | 10 | 10 | 12 | 13 | 14 | 15 | 15 | 15 | 15 | 15 | 15 | 13 | 10 | 10 | 10 | 9 | 10 | 10 |
| | 15 | 15 | 14 | 14 | 14 | 15 | 15 | 16 | 17 | 18 | 22 | 24 | 24 | 25 | 25 | 25 | 23 | 20 | 16 | 15 | 15 | 15 | 15 | 15 |
| | ↖ | ↖ | ↖ | ↖ | ↖ | ↖ | ↖ | ↖ | ↖ | ↖ | ↖ | ↖ | ↖ | ↖ | ↖ | ↖ | ↖ | ↖ | ↖ | ↖ | ↖ | ↖ | ↖ | ↖ |
| Houston Pilots F - 63/64 | 10 | 10 | 10 | 9 | 9 | 10 | 10 | 10 | 12 | 13 | 13 | 15 | 15 | 15 | 15 | 15 | 14 | 13 | 10 | 10 | 9 | 9 | 9 | 10 |
| | 15 | 15 | 14 | 14 | 14 | 15 | 15 | 16 | 17 | 18 | 21 | 23 | 24 | 25 | 25 | 25 | 23 | 20 | 16 | 15 | 15 | 14 | 14 | 15 |
| | ↖ | ↖ | ↖ | ↖ | ↖ | ↖ | ↖ | ↖ | ↖ | ↖ | ↖ | ↖ | ↖ | ↖ | ↖ | ↖ | ↖ | ↖ | ↖ | ↖ | ↖ | ↖ | ↖ | ↖ |
| Houston Pilots E - 51/52 | 10 | 10 | 9 | 9 | 9 | 9 | 10 | 10 | 12 | 13 | 13 | 14 | 15 | 15 | 15 | 15 | 15 | 13 | 10 | 10 | 9 | 9 | 9 | 9 |
| | 15 | 15 | 14 | 14 | 14 | 15 | 15 | 16 | 17 | 20 | 21 | 23 | 24 | 25 | 25 | 25 | 23 | 20 | 16 | 15 | 15 | 14 | 14 | 15 |
| | ↖ | ↖ | ↖ | ↖ | ↖ | ↖ | ↖ | ↖ | ↖ | ↖ | ↖ | ↖ | ↖ | ↖ | ↖ | ↖ | ↖ | ↖ | ↖ | ↖ | ↖ | ↖ | ↖ | ↖ |
| Houston Pilots D - 37/38 | 10 | 10 | 9 | 9 | 9 | 9 | 10 | 10 | 12 | 13 | 13 | 15 | 15 | 15 | 15 | 15 | 14 | 13 | 10 | 10 | 10 | 9 | 9 | 9 |
| | 15 | 15 | 14 | 14 | 14 | 15 | 15 | 16 | 17 | 20 | 21 | 23 | 24 | 24 | 25 | 25 | 23 | 20 | 16 | 15 | 15 | 14 | 14 | 15 |
| | ↖ | ↖ | ↖ | ↖ | ↖ | ↖ | ↖ | ↖ | ↖ | ↖ | ↖ | ↖ | ↖ | ↖ | ↖ | ↖ | ↖ | ↖ | ↖ | ↖ | ↖ | ↖ | ↖ | ↖ |
| Houston Pilots C - 25/26 | 10 | 10 | 9 | 9 | 9 | 9 | 10 | 10 | 12 | 13 | 13 | 15 | 15 | 15 | 15 | 15 | 14 | 13 | 10 | 10 | 10 | 9 | 9 | 9 |
| | 16 | 15 | 15 | 14 | 14 | 15 | 15 | 16 | 17 | 20 | 21 | 23 | 24 | 25 | 25 | 25 | 23 | 20 | 16 | 15 | 15 | 15 | 15 | 15 |
| | ↖ | ↖ | ↖ | ↖ | ↖ | ↖ | ↖ | ↖ | ↖ | ↖ | ↖ | ↖ | ↖ | ↖ | ↖ | ↖ | ↖ | ↖ | ↖ | ↖ | ↖ | ↖ | ↖ | ↖ |
| Houston Pilots B - 11/12 | 9 | 9 | 8 | 8 | 8 | 8 | 9 | 10 | 10 | 12 | 13 | 14 | 15 | 15 | 15 | 15 | 14 | 13 | 10 | 10 | 9 | 8 | 8 | 8 |
| | 16 | 15 | 15 | 14 | 14 | 15 | 15 | 16 | 17 | 18 | 21 | 22 | 23 | 24 | 24 | 24 | 22 | 20 | 17 | 16 | 15 | 15 | 15 | 15 |
| | ↖ | ↖ | ↖ | ↖ | ↖ | ↖ | ↖ | ↖ | ↖ | ↖ | ↖ | ↖ | ↖ | ↖ | ↖ | ↖ | ↖ | ↖ | ↖ | ↖ | ↖ | ↖ | ↖ | ↖ |
| Houston Pilots A - 1 & 2 Bravo | 12 | 12 | 10 | 10 | 10 | 10 | 10 | 12 | 13 | 13 | 14 | 15 | 15 | 16 | 16 | 16 | 15 | 15 | 13 | 13 | 13 | 12 | 10 | 10 |
| | 17 | 16 | 16 | 16 | 16 | 16 | 16 | 17 | 18 | 21 | 22 | 24 | 25 | 26 | 26 | 26 | 24 | 23 | 21 | 20 | 17 | 16 | 16 | 16 |
| | ↖ | ↖ | ↖ | ↖ | ↖ | ↖ | ↖ | ↖ | ↖ | ↖ | ↖ | ↖ | ↖ | ↖ | ↖ | ↖ | ↖ | ↖ | ↖ | ↖ | ↖ | ↖ | ↖ | ↖ |

NOTE: This is automated data that may/may not agree with the official BAM thinking that's found on the daily slides.
This data should be used as a guide only.

Houston Pilots: SAT. 12/28/2024

Forecast Discussion

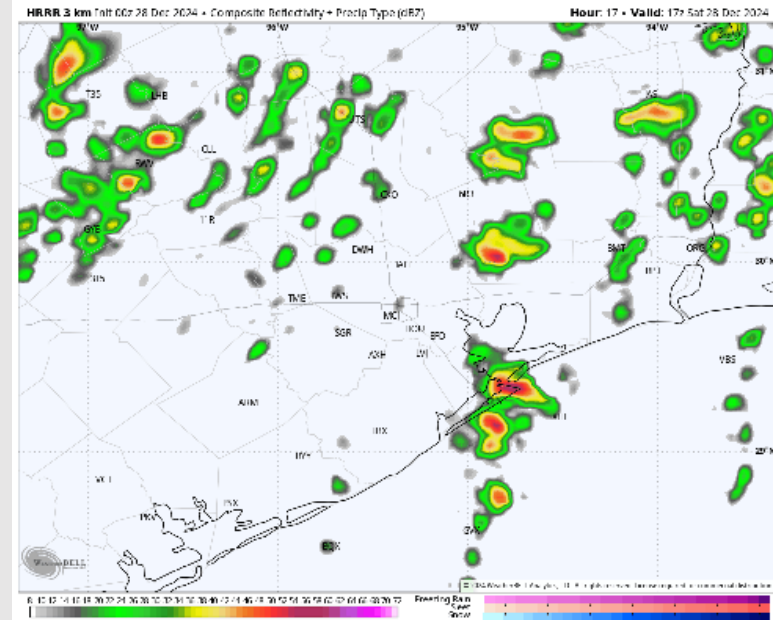
Precip: Scattered showers and storms (30-40%) are favored from 3 AM – 5 PM on Saturday with the greatest coverage being from 11 AM – 3 PM. **A few strong to severe storms with large hail, 45-50+ kts wind gusts, and tornadoes will be possible.**

Wind: Winds will be out of the SE through 11 AM before shifting to be out of the SW for the rest of the day today. **N of Morgan's Point:** Winds will be at 2 - 7 kts through 11 AM before increasing to 8 - 13 kts through 6 PM before returning to 2 - 7 kts for the rest of the day. **S of Morgan's Point:** Winds will start at 5 - 10 kts through 10 AM before increasing to 13 - 18 kts for the remainder of day. **A few non-thunderstorm gusts of 25 - 30 kts will be possible from 11 AM – 6 PM for all Stations.**

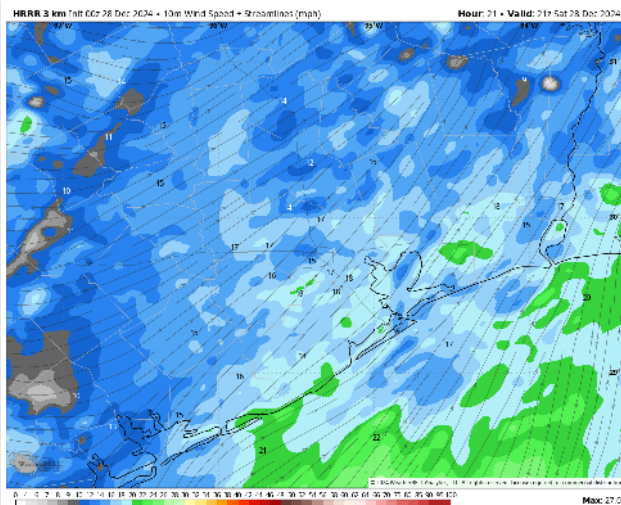
High Temps: **N of Morgan's Point:** Upper 70s F. **S of Morgan's Point:** Upper 60s to Lower 70s F.

Visibility: Visibility may be reduced under downpours this AM along with Sea Fog being a risk prior to storms arriving this morning AM. Check the corresponding visibility slide.

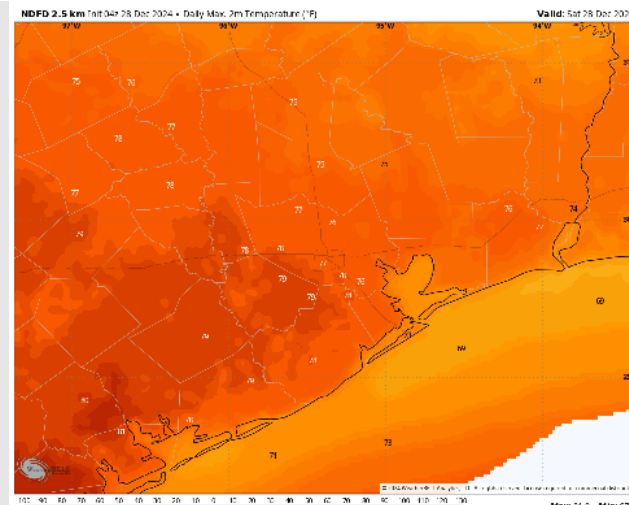
Precip Image: 11 AM CT



Wind Speed:
3 PM CT



High Temps
Today



Houston Pilots: SUN. 12/29/2024

Forecast Discussion

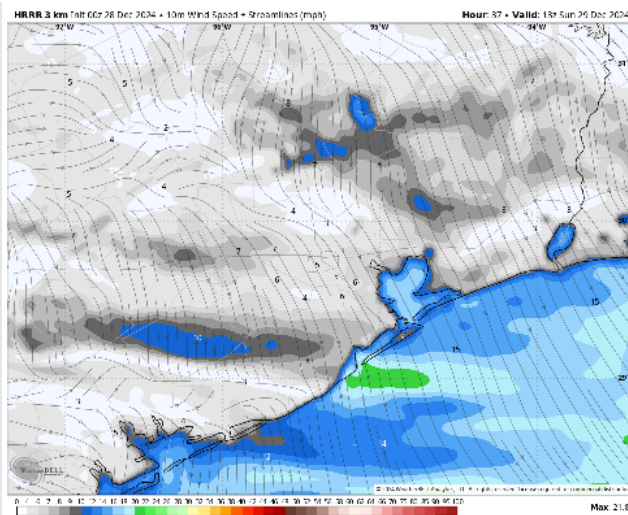
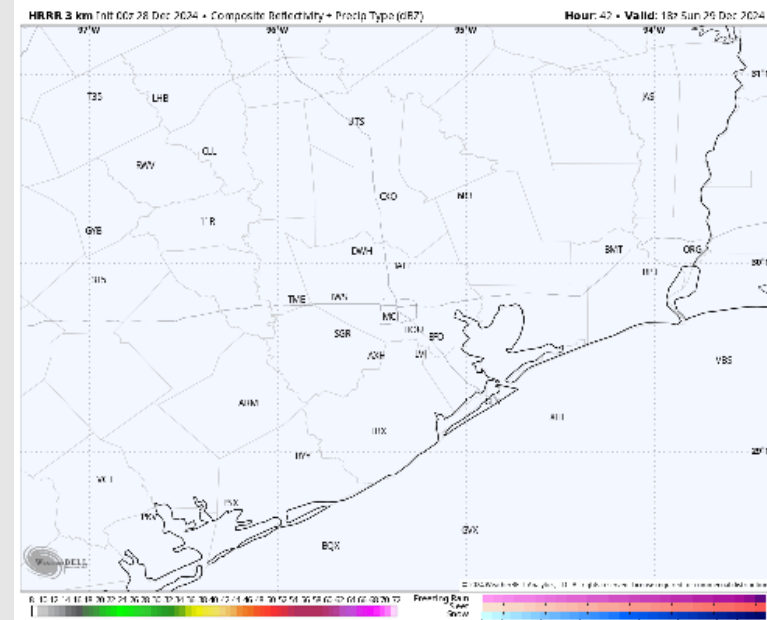
Precip: Dry condition favored for all stations Sunday.

Wind: Winds will be out of the NW through 7 PM before shifting to be out of the SW for the rest of the day. **N of Morgan's Point:** Winds will be 3 – 8 kts throughout Sunday. **S of Morgan's Point:** Winds will be at 9 – 14 kts through 10 AM before decreasing to 2 – 7 kts for the rest of Sunday.

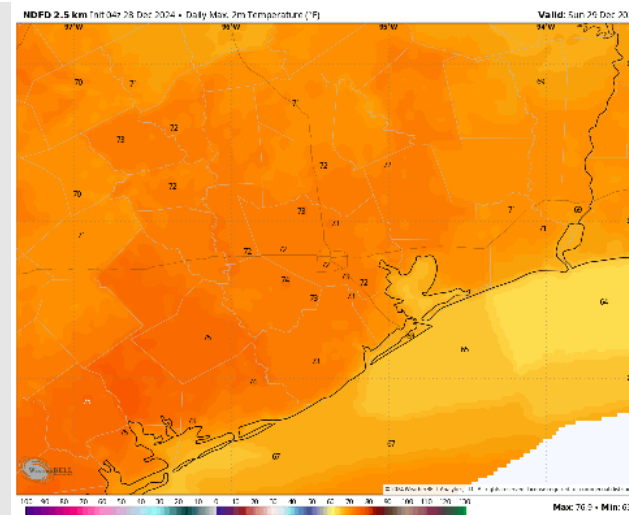
High Temps: **N of Morgan's Point:** Lower 70s F. **S of Morgan's Point:** Mid-60s F.

Visibility: Not favoring any visibility concerns for Sunday.

Precip Image: 12 PM CT



Wind Speed:
7 AM CT



High Temps
Sunday

Houston Pilots: MON. 12/30/2024

Forecast Discussion

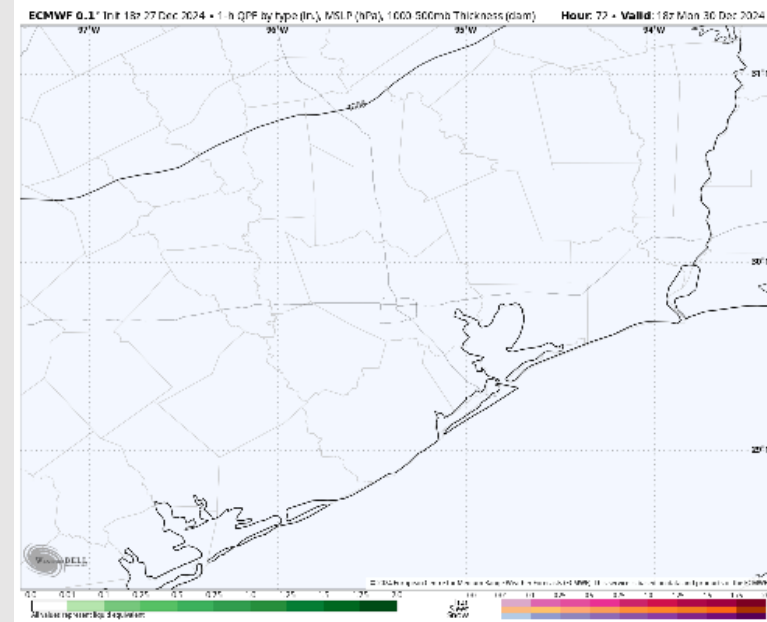
Precip: Favoring dry conditions for Monday.

Wind: Winds will be out of the S/SW throughout the day on Monday. **N of Morgan's Point:** Winds will be at 5 – 10 kts throughout the day Monday. **S of Morgan's Point:** Winds will be at 3 – 8 kts through 9 AM before increasing to 11 – 16 kts for the rest of Monday

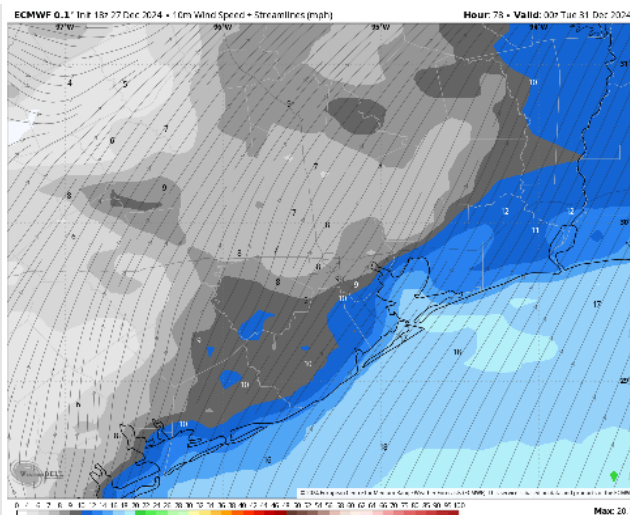
High Temps: **N of Morgan's Point:** Upper-70s F. **S of Morgan's Point:** Upper 60s F, near 70 F.

Visibility: Not favoring any visibility concerns for Monday.

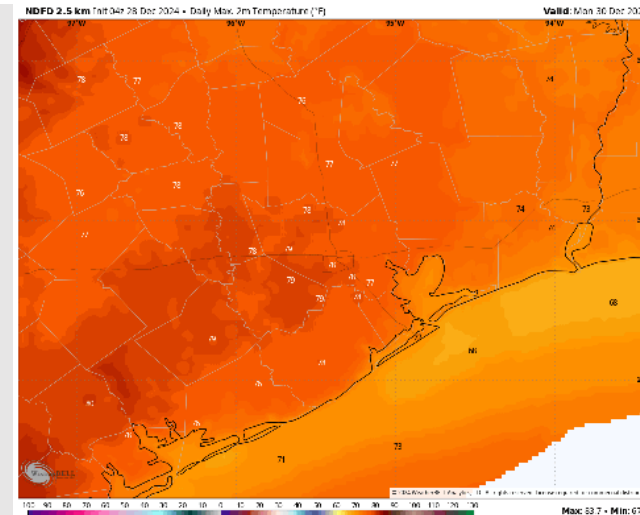
Precip Image: 12 PM CT



Wind Speed
6 PM CT

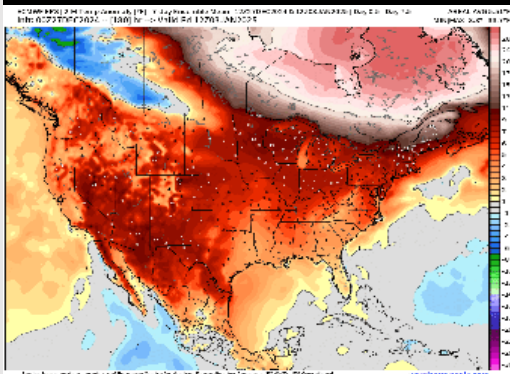


High Temps
Monday

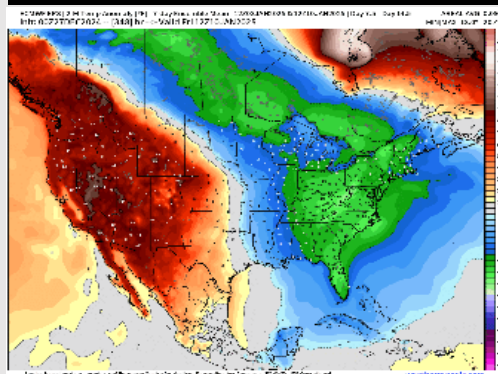


Houston Pilots: 12/28/24

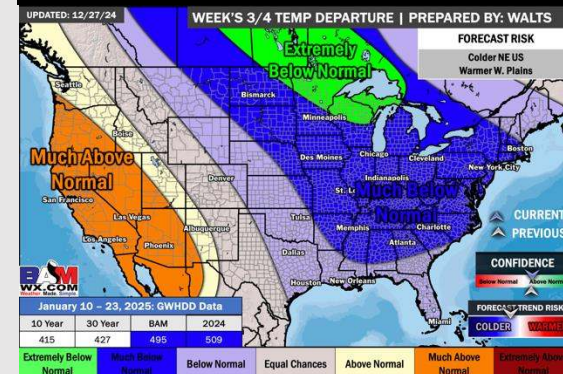
Next 7 Day Temperature Departure



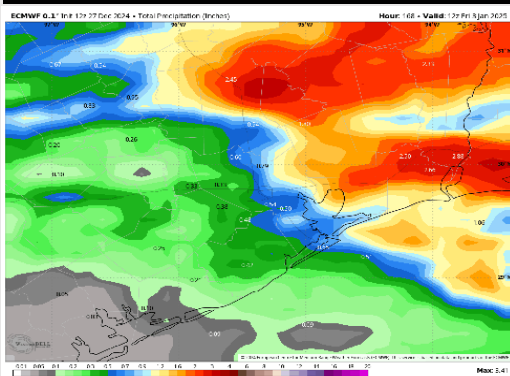
8-14 Day Temperature Departure



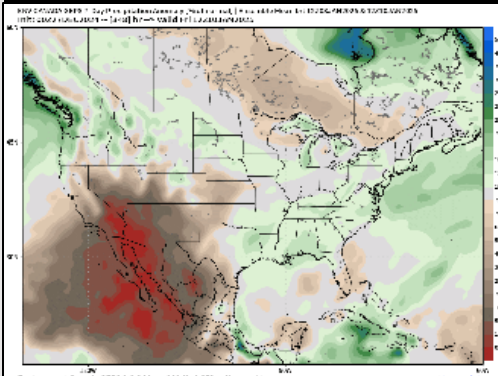
15-30 Day Temperature Departure



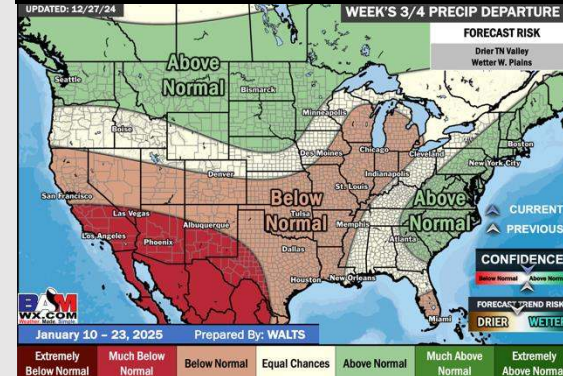
Next 7 Day Total Precipitation



8-14 Day % of Average Precip.



15-30 Day % of Average Precip.



- Temps are expected to be much above normal for the week 1 timeframe. Rain chances continue through the weekend with rain tapering off by next week.
- Near normal temperatures and near normal rainfall are expected for week 2.
- Below normal temperatures and below normal precipitation chances are expected for the weeks $\frac{3}{4}$ timeframe.