

# Houston Pilots Forecast Package



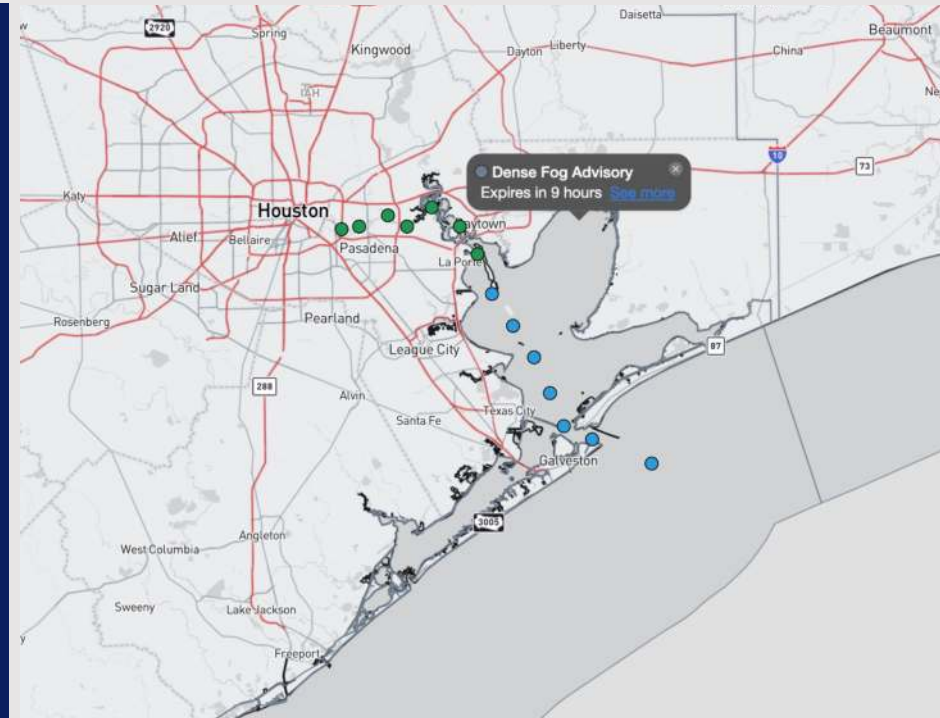
Updated: 11:45 PM CT

Friday, December 27<sup>th</sup>, 2024

Forecaster: Xander Lowry

## Weather Headlines

- **Strong-to-severe storms will return today. All modes of severe weather are on the table.**
- **Patchy to widespread dense fog is expected to continue to develop this morning.**
- **Drier conditions are favored to start next week.**



**Current Radar: 11:35 PM CT**

As always, please do not hesitate to reach out to us with any forecast questions at **(317)-560-8122**. Press **1** for forecast questions.

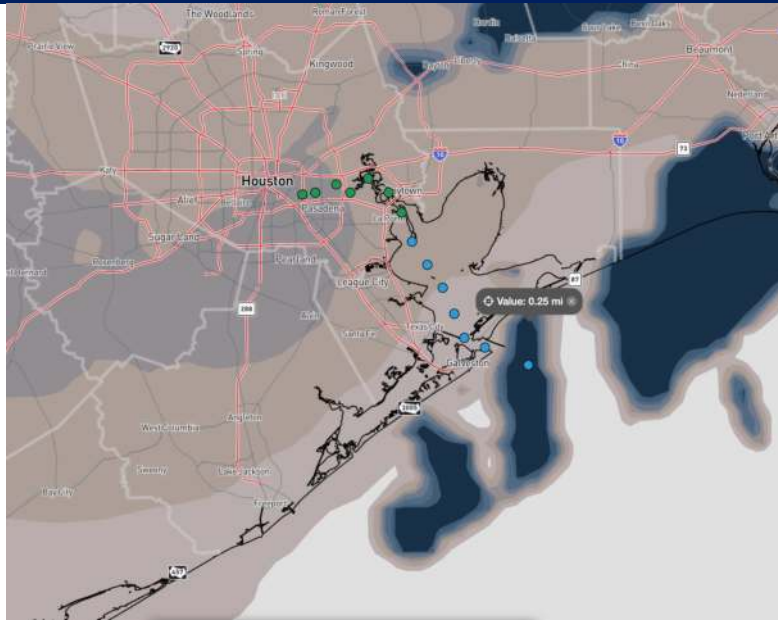
You can also access real-time forecast updates and 24/7 meteorological chat assistance on your **Clarity** app. Click [here](#) for login assistance.



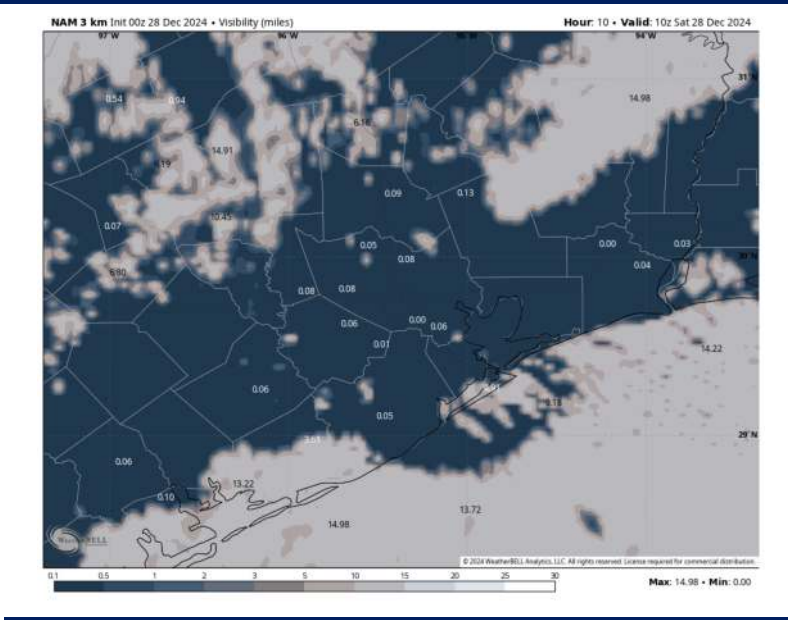
# Houston Pilots Visibility Report



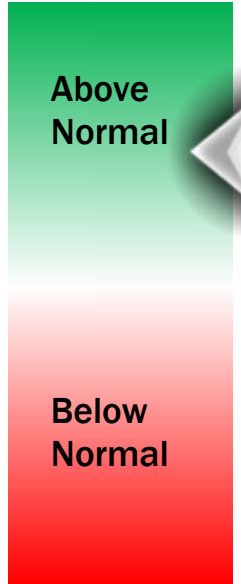
## CURRENT VISIBILITY 11:25 PM CT FRI



## 4 AM CT SAT VISIBILITY



## Confidence



TIMEFRAME DISCUSSED	THREAT
Current - 12 PM SAT	High

- Pockets of Fog / Mist has already begun to impact stations N of Morgan's point this evening, with expansion of coverage favored to continue. Sea Fog has also begun to form near the boarding station, and further expansion N is also favored.
- Sea Fog will continue to work N to impact all stations S of Morgan's Point by ~1 AM SAT. After 1 AM, fog will also creep N, further impacting stations N of Morgan's point.
- Favoring the peak fog coverage and density (0.25-mile visibility or less) to occur between 1 AM - 4 AM Saturday. After 4 AM, coverage becomes patchier due to scattered showers and storms working in. Fog isn't expected to clear out until 11 AM - 12 PM.

# Houston Pilots Extended Range Visibility Report



## Tuesday 12/31/24

Monitoring for a low-end, isolated sea fog risk for Tuesday AM. Confidence is low.



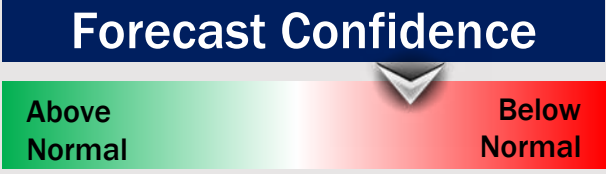
## Thursday 1/2/25

Not favoring any fog concerns for Thursday.



## Wednesday 1/1/25

Not favoring any fog concerns for Wednesday.



## Chance for Fog

Tuesday AM	Low
Tuesday PM	Unlikely
Wednesday AM	Unlikely
Wednesday PM	Unlikely
Thursday AM	Unlikely
Thursday PM	Unlikely

# Houston Pilots Visibility Chart (miles)



## Forecast Confidence



Visibility	Sat 1 am	Sat 2 am	Sat 3 am	Sat 4 am	Sat 5 am	Sat 6 am	Sat 7 am	Sat 8 am	Sat 9 am	Sat 10 am	Sat 11 am	Sat 12 pm	Sat 1 pm	Sat 2 pm	Sat 3 pm	Sat 4 pm	Sat 5 pm	Sat 6 pm	Sat 7 pm	Sat 8 pm	Sat 9 pm	Sat 10 pm	Sat 11 pm	Sun 12 am
Houston Pilots N - 610 Bridge	3.9	3.9	3.9	3.9	3.9	3.9	3.9	3.9	3.9	5.9	6.9	7.9	9	9	10	10	10	10	10	10	10	10	10	10
Houston Pilots M - Kinder 1	3.9	3.9	3.9	3.9	3.9	3.9	3.9	3.9	3.9	5.9	6.9	7.9	9	9	10	10	10	10	10	10	10	10	10	10
Houston Pilots L - Greens Bayou	4.9	3.9	3.9	3.9	3.9	3.9	3.9	3.9	3.9	5.9	7.9	7.9	9	9	10	10	10	10	10	10	10	10	10	10
Houston Pilots K - Shell Crude	3.9	3.9	3.9	3.9	3.9	3.9	3.9	3.9	3.9	5.9	7.9	7.9	9	9	10	10	10	10	10	10	10	10	10	10
Houston Pilots J - Lynchburg Ferries	2	1.6	1.1	3.9	2	3.9	3.9	3.9	3.9	5.9	7.9	7.9	9	9	10	10	10	10	10	10	10	10	10	10
Houston Pilots I - Exxon 3	0.3	0.3	0.3	0.8	0.3	1.1	1.6	3.9	3.9	5.9	7.9	7.9	7.9	9	10	10	10	10	10	10	10	10	10	10
Houston Pilots H - Morgans Point	0.3	0.3	0.3	0.3	0.3	0.3	0.5	0.8	2.5	5.9	7.9	7.9	7.9	9	10	10	10	10	10	10	10	10	10	10
Houston Pilots G - 75/76	0.3	0.3	0.3	0.3	0.3	0.3	0.3	0.3	0.3	2.9	6.9	6.9	5.9	6.9	6.9	6.9	7.9	10	10	10	9	6.9	7	7
Houston Pilots F - 63/64	0.3	0.3	0.3	0.3	0.3	0.3	0.5	0.3	0.3	2.9	6.9	6.9	5.9	6.9	5.9	6.9	6.9	7.9	9	9	6.9	6.9	7	6
Houston Pilots E - 51/52	0.3	0.3	0.3	0.3	0.3	0.5	0.5	1.6	1.1	5.9	6.9	5.9	5.9	6.9	5.9	6.9	6.9	7.9	9	7.9	6.9	5.9	6	5
Houston Pilots D - 37/38	0.5	0.3	0.3	0.3	0.3	0.5	3.9	2	2.9	5.9	6.9	3.9	5.9	6.9	5.9	5.9	6.9	7.9	7.9	7.9	6.9	5.9	6	5
Houston Pilots C - 25/26	1.6	0.3	0.3	0.3	0.3	1.1	3.9	3.9	2.9	5.9	6.9	3.9	4.9	6.9	5.9	5.9	6.9	7.9	7.9	7.9	6.9	5.9	6	4
Houston Pilots B - 11/12	1.1	0.3	0.3	0.3	0.3	0.5	0.5	1.6	1.6	4.9	6.9	3.9	4.9	6.9	5.9	5.9	6.9	6.9	7.9	6.9	6.9	4.9	6	5
Houston Pilots A - 1 & 2 Bravo	1.1	0.3	0.3	0.3	0.3	0.5	0.5	0.5	0.3	3.9	5.9	4.9	3.9	3.9	3.9	4.9	4.9	5.9	6.9	6.9	5.9	4.9	7	5

**NOTE: This is automated data that may/may not agree with the official BAM thinking that's found on the daily slides or special visibility report slides. This data should be used as a guide only**

# Houston Pilots Wind Chart



**Sustained wind 10 Knots**

**Gusts 15 Knots**

**Wind from the SE**

**Example**

10

15

↙

Wind	Sat 1 am	Sat 2 am	Sat 3 am	Sat 4 am	Sat 5 am	Sat 6 am	Sat 7 am	Sat 8 am	Sat 9 am	Sat 10 am	Sat 11 am	Sat 12 pm	Sat 1 pm	Sat 2 pm	Sat 3 pm	Sat 4 pm	Sat 5 pm	Sat 6 pm	Sat 7 pm	Sat 8 pm	Sat 9 pm	Sat 10 pm	Sat 11 pm	Sun 12 am
Houston Pilots N - 610 Bridge	6 13 ↕	6 13 ↕	6 12 ↕	5 12 ↕	6 12 ↕	6 12 ↕	6 13 ↕	7 15 ↕	8 16 ↕	8 18 ↕	10 22 ↕	13 24 ↕	13 26 ↕	13 26 ↕	13 24 ↕	13 22 ↕	10 18 ↕	9 15 ↕	7 15 ↕	6 14 ↕	6 14 ↕	6 13 ↕	6 14 ↕	6 14 ↕
Houston Pilots M - Kinder 1	6 13 ↕	6 13 ↕	6 12 ↕	6 12 ↕	6 12 ↕	6 12 ↕	6 13 ↕	6 15 ↕	8 16 ↕	8 18 ↕	10 21 ↕	13 24 ↕	13 25 ↕	13 26 ↕	13 24 ↕	13 22 ↕	10 18 ↕	9 15 ↕	7 14 ↕	7 14 ↕	6 14 ↕	6 13 ↕	6 14 ↕	6 14 ↕
Houston Pilots L - Greens Bayou	6 13 ↕	6 13 ↕	6 12 ↕	6 12 ↕	6 12 ↕	6 12 ↕	6 13 ↕	6 15 ↕	7 16 ↕	8 17 ↕	10 21 ↕	13 24 ↕	13 25 ↕	13 26 ↕	13 25 ↕	12 24 ↕	10 21 ↕	9 17 ↕	7 15 ↕	6 14 ↕	6 14 ↕	6 13 ↕	6 14 ↕	6 14 ↕
Houston Pilots K - Shell Crude	6 13 ↕	6 13 ↕	6 12 ↕	6 12 ↕	6 12 ↕	6 13 ↕	6 13 ↕	6 15 ↕	7 16 ↕	8 17 ↕	10 21 ↕	13 24 ↕	13 25 ↕	13 25 ↕	13 24 ↕	13 21 ↕	10 17 ↕	9 15 ↕	7 14 ↕	7 14 ↕	6 13 ↕	6 13 ↕	6 13 ↕	6 14 ↕
Houston Pilots J - Lynchburg Ferries	6 12 ↕	6 12 ↕	5 12 ↕	5 12 ↕	5 12 ↕	6 12 ↕	6 13 ↕	6 15 ↕	7 16 ↕	8 17 ↕	10 21 ↕	13 23 ↕	13 24 ↕	13 25 ↕	13 25 ↕	13 23 ↕	10 21 ↕	9 17 ↕	7 15 ↕	6 14 ↕	6 13 ↕	6 12 ↕	6 13 ↕	6 13 ↕
Houston Pilots I - Exxon 3	9 14 ↕	9 14 ↕	8 13 ↕	8 13 ↕	8 13 ↕	8 14 ↕	8 14 ↕	8 15 ↕	9 16 ↕	10 17 ↕	10 20 ↕	13 22 ↕	14 23 ↕	14 24 ↕	15 24 ↕	15 23 ↕	14 22 ↕	13 18 ↕	12 15 ↕	10 15 ↕	9 14 ↕	9 14 ↕	8 14 ↕	9 14 ↕
Houston Pilots H - Morgans Point	9 14 ↕	8 14 ↕	8 13 ↕	8 13 ↕	8 13 ↕	8 13 ↕	8 14 ↕	8 15 ↕	9 16 ↕	10 17 ↕	10 20 ↕	13 22 ↕	13 23 ↕	14 24 ↕	14 24 ↕	14 22 ↕	13 18 ↕	12 15 ↕	10 15 ↕	9 15 ↕	8 14 ↕	8 14 ↕	8 14 ↕	9 14 ↕
Houston Pilots G - 75/76	10 15 ↕	10 15 ↕	10 14 ↕	9 14 ↕	9 14 ↕	10 15 ↕	10 15 ↕	10 16 ↕	12 17 ↕	13 18 ↕	14 22 ↕	15 24 ↕	15 24 ↕	15 25 ↕	15 25 ↕	15 23 ↕	15 20 ↕	13 16 ↕	10 15 ↕	10 15 ↕	10 15 ↕	9 15 ↕	9 15 ↕	10 15 ↕
Houston Pilots F - 63/64	10 15 ↕	10 15 ↕	10 14 ↕	9 14 ↕	9 14 ↕	10 15 ↕	10 15 ↕	10 16 ↕	12 17 ↕	13 18 ↕	13 21 ↕	15 23 ↕	15 24 ↕	15 25 ↕	15 25 ↕	14 23 ↕	13 20 ↕	10 16 ↕	10 15 ↕	9 15 ↕	9 14 ↕	9 14 ↕	9 14 ↕	10 15 ↕
Houston Pilots E - 51/52	10 15 ↕	10 15 ↕	9 14 ↕	9 14 ↕	9 14 ↕	9 15 ↕	10 15 ↕	10 16 ↕	12 17 ↕	13 20 ↕	13 21 ↕	14 23 ↕	15 24 ↕	15 25 ↕	15 25 ↕	15 23 ↕	15 20 ↕	13 16 ↕	10 15 ↕	10 15 ↕	9 15 ↕	9 14 ↕	9 14 ↕	9 15 ↕
Houston Pilots D - 37/38	10 15 ↕	10 15 ↕	9 14 ↕	9 14 ↕	9 14 ↕	9 15 ↕	10 15 ↕	10 16 ↕	12 17 ↕	13 20 ↕	13 21 ↕	15 23 ↕	15 24 ↕	15 25 ↕	15 25 ↕	14 23 ↕	13 20 ↕	10 16 ↕	10 15 ↕	10 15 ↕	9 14 ↕	9 14 ↕	9 14 ↕	9 15 ↕
Houston Pilots C - 25/26	10 16 ↕	10 15 ↕	9 15 ↕	9 14 ↕	9 14 ↕	9 15 ↕	9 15 ↕	10 16 ↕	12 17 ↕	13 20 ↕	13 21 ↕	15 23 ↕	15 24 ↕	15 25 ↕	15 25 ↕	14 23 ↕	13 20 ↕	10 16 ↕	10 15 ↕	10 15 ↕	9 15 ↕	9 15 ↕	9 15 ↕	9 15 ↕
Houston Pilots B - 11/12	9 16 ↕	9 15 ↕	8 15 ↕	8 14 ↕	8 14 ↕	8 15 ↕	9 15 ↕	10 16 ↕	10 17 ↕	12 18 ↕	13 21 ↕	13 22 ↕	14 23 ↕	15 24 ↕	15 24 ↕	15 24 ↕	14 22 ↕	13 20 ↕	10 17 ↕	10 16 ↕	9 15 ↕	8 15 ↕	8 15 ↕	8 15 ↕
Houston Pilots A - 1 & 2 Bravo	12 17 ↕	12 16 ↕	10 16 ↕	10 16 ↕	10 16 ↕	10 16 ↕	10 16 ↕	12 17 ↕	13 18 ↕	13 21 ↕	14 22 ↕	15 24 ↕	15 25 ↕	16 26 ↕	16 26 ↕	16 26 ↕	15 24 ↕	15 23 ↕	13 21 ↕	13 20 ↕	13 17 ↕	12 16 ↕	10 16 ↕	10 16 ↕

**NOTE: This is automated data that may/may not agree with the official BAM thinking that's found on the daily slides. This data should be used as a guide only.**

# Houston Pilots: SAT. 12/28/2024



## Forecast Discussion

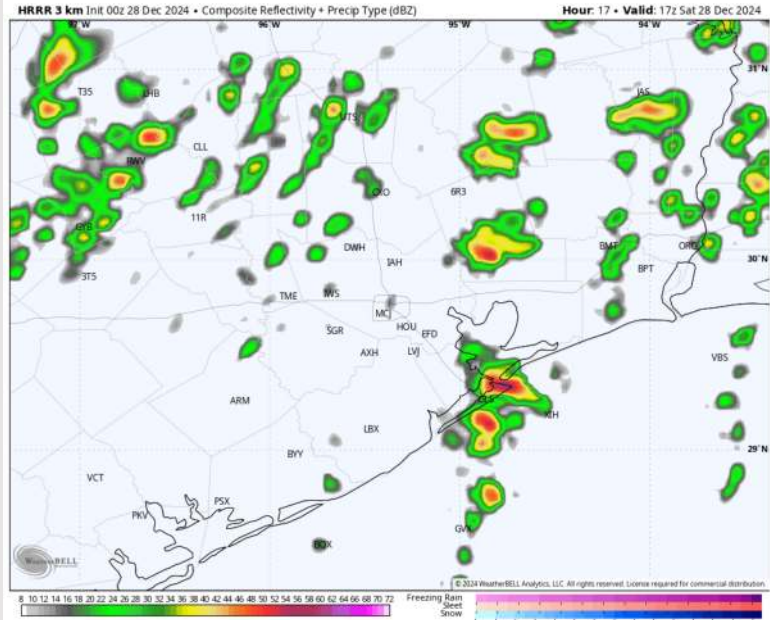
**Precip:** Scattered showers and storms (30-40%) are favored from 3 AM – 5 PM on Saturday with the greatest coverage being from 11 AM – 3 PM. **A few strong to severe storms with large hail, 45-50 + kts wind gusts, and tornadoes will be possible.**

**Wind:** Winds will be out of the SE through 11 AM before shifting to be out of the SW for the rest of the day today. **N of Morgan's Point:** Winds will be at 2 - 7 kts through 11 AM before increasing to 8 - 13 kts through 6 PM before returning to 2 - 7 kts for the rest of the day. **S of Morgan's Point:** Winds will start at 5 - 10 kts through 10 AM before increasing to 13 - 18 kts for the remainder of day. **A few non-thunderstorm gusts of 25 - 30 kts will be possible from 11 AM - 6 PM for all Stations.**

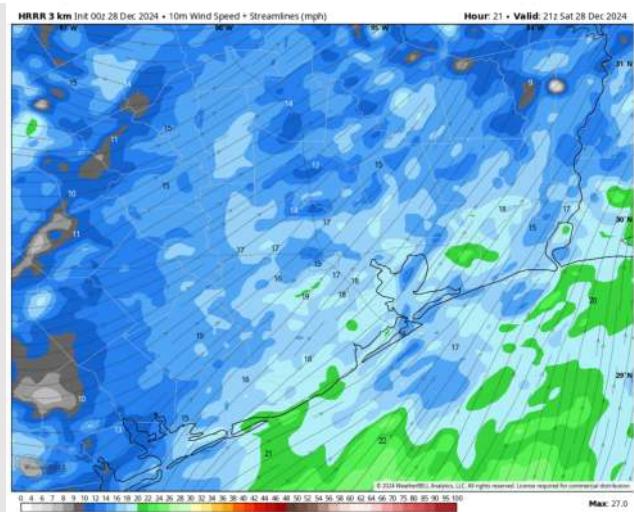
**High Temps:** **N of Morgan's Point:** Upper 70s F. **S of Morgan's Point:** Upper 60s to Lower 70s F.

**Visibility:** Visibility may be reduced under downpours this AM along with Sea Fog being a risk prior to storms arriving this morning AM. Check the corresponding visibility slide.

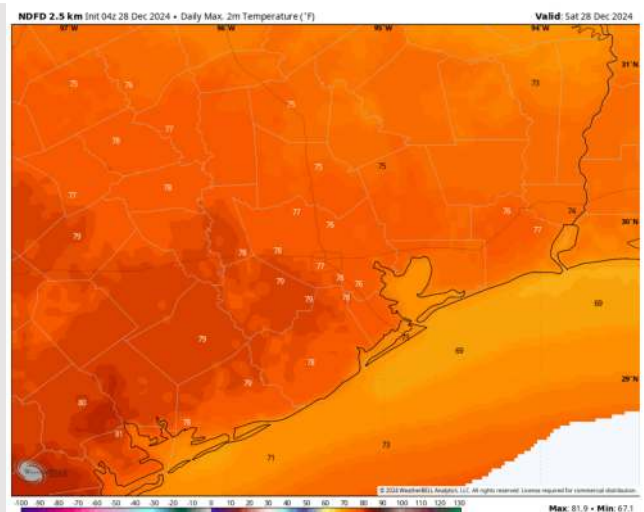
## Precip Image: 11 AM CT



Wind Speed:  
3 PM CT



High Temps  
Today



# Houston Pilots: SUN. 12/29/2024



## Forecast Discussion

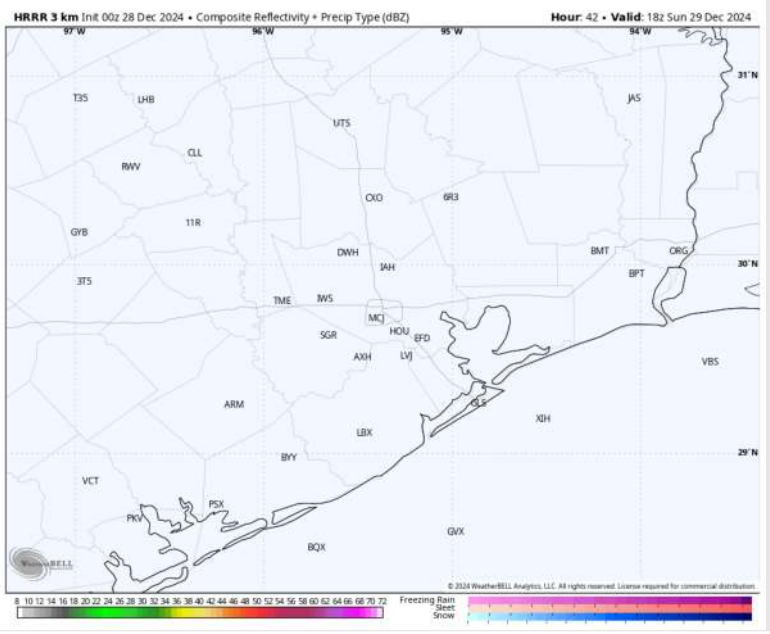
**Precip:** Dry condition favored for all stations Sunday.

**Wind:** Winds will be out of the NW through 7 PM before shifting to be out of the SW for the rest of the day. **N of Morgan's Point:** Winds will be 3 – 8 kts throughout Sunday. **S of Morgan's Point:** Winds will be at 9 – 14 kts through 10 AM before decreasing to 2 – 7 kts for the rest of Sunday.

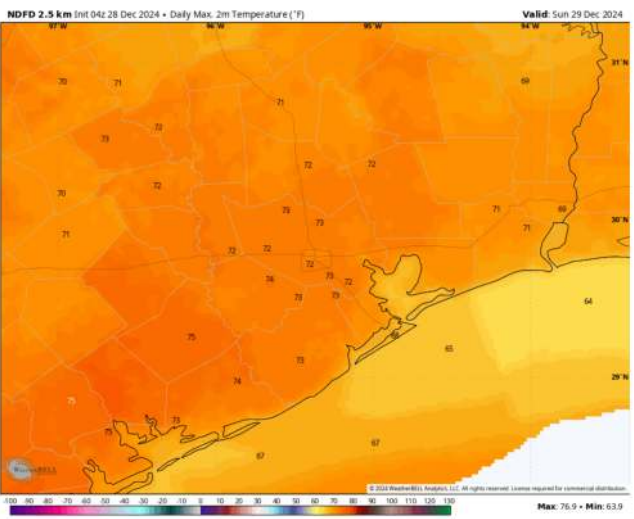
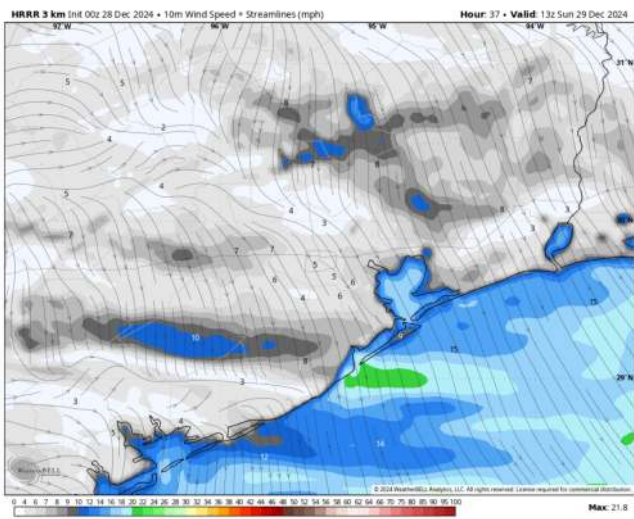
**High Temps:** **N of Morgan's Point:** Lower 70s F. **S of Morgan's Point:** Mid-60s F.

**Visibility:** Not favoring any visibility concerns for Sunday.

## Precip Image: 12 PM CT



Wind Speed:  
7 AM CT



High Temps  
Sunday

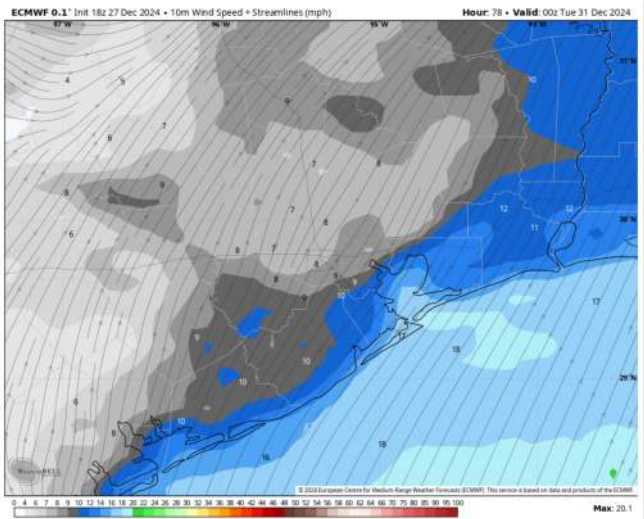
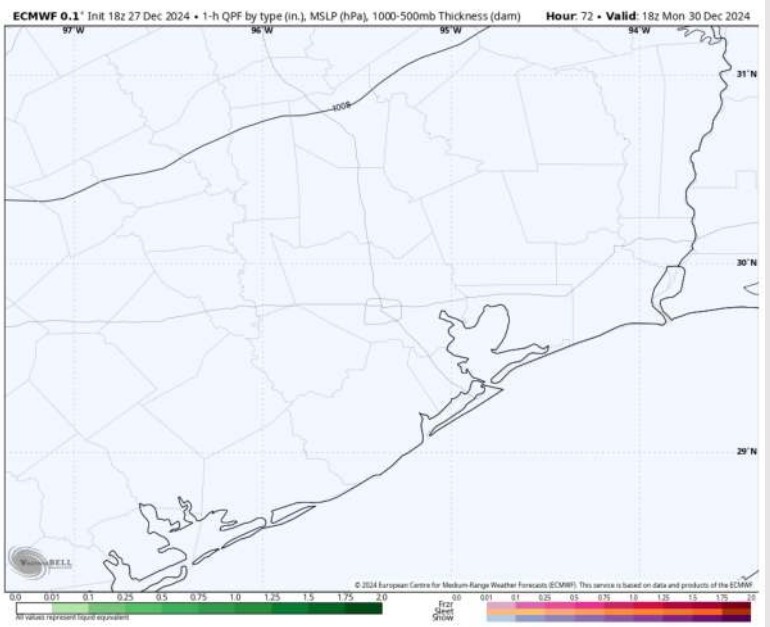
# Houston Pilots: MON. 12/30/2024



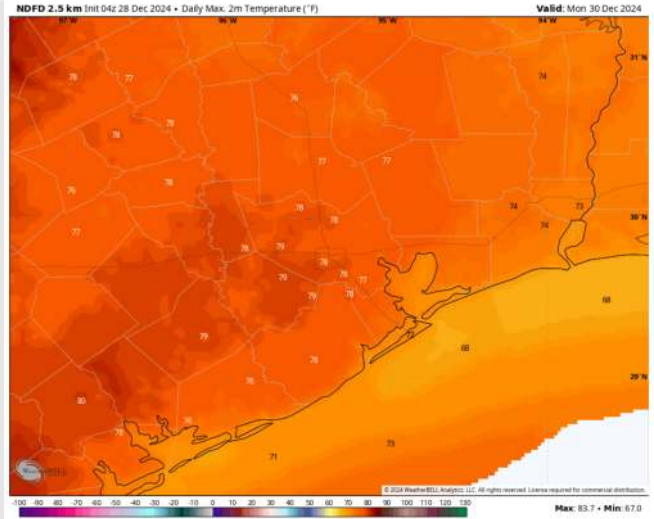
## Forecast Discussion

- Precip:** Favoring dry conditions for Monday.
- Wind:** Winds will be out of the S/SW throughout the day on Monday. **N of Morgan's Point:** Winds will be at 5 – 10 kts throughout the day Monday. **S of Morgan's Point:** Winds will be at 3 – 8 kts through 9 AM before increasing to 11 – 16 kts for the rest of Monday
- High Temps:** **N of Morgan's Point:** Upper-70s F. **S of Morgan's Point:** Upper 60s F, near 70 F.
- Visibility:** Not favoring any visibility concerns for Monday.

## Precip Image: 12 PM CT



Wind Speed  
6 PM CT



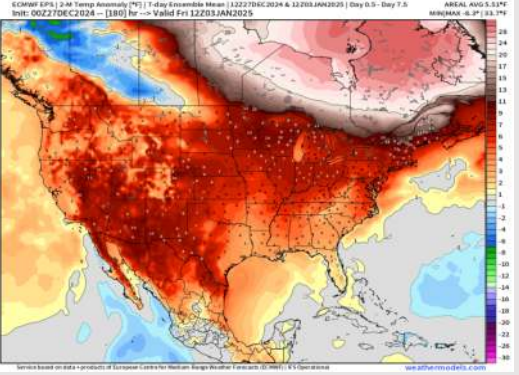
High Temps  
Monday



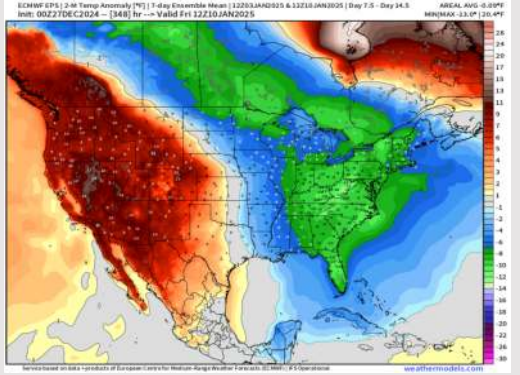
# Houston Pilots: 12/28/24



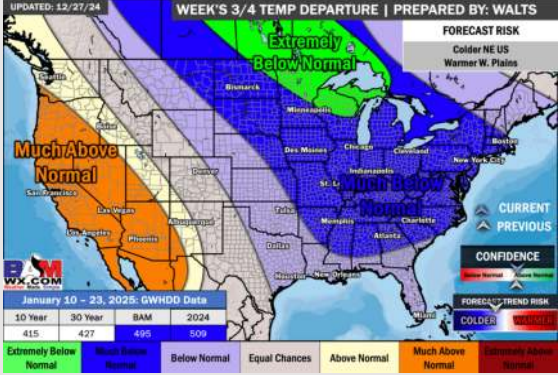
**Next 7 Day Temperature Departure**



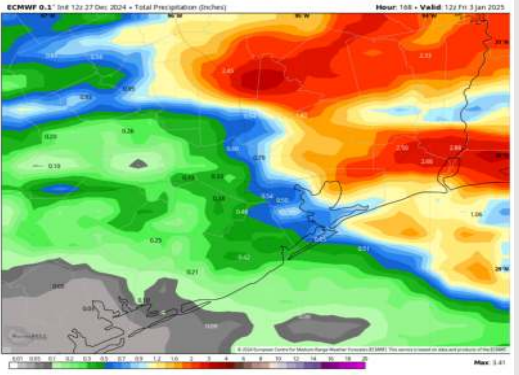
**8-14 Day Temperature Departure**



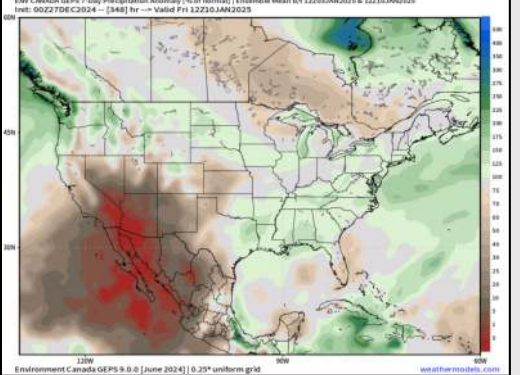
**15-30 Day Temperature Departure**



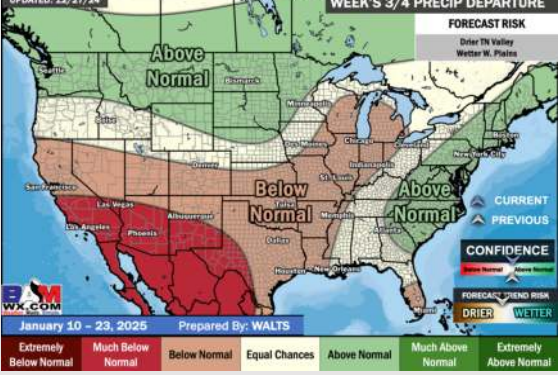
**Next 7 Day Total Precipitation**



**8-14 Day % of Average Precip.**



**15-30 Day % of Average Precip.**



- Temps are expected to be much above normal for the week 1 timeframe. Rain chances continue through the weekend with rain tapering off by next week.
- Near normal temperatures and near normal rainfall are expected for week 2.
- Below normal temperatures and below normal precipitation chances are expected for the weeks 3/4 timeframe.