

# Houston Pilots Forecast Package



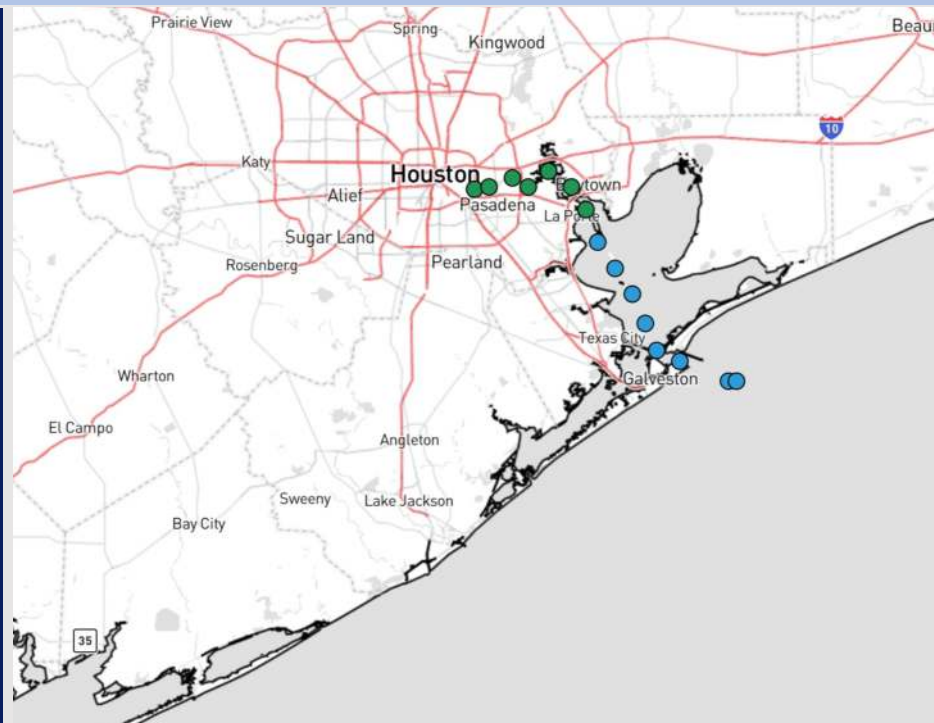
Updated: 1:00 PM CT

Thursday, December 5, 2024

Forecaster: Adam Feick

## Weather Headlines

- Dry conditions are favored through the end of the week before rain showers return on Saturday.
- Wind gusts of 20 - 25 kts will continue into the weekend.
- No concerns for fog through the weekend.

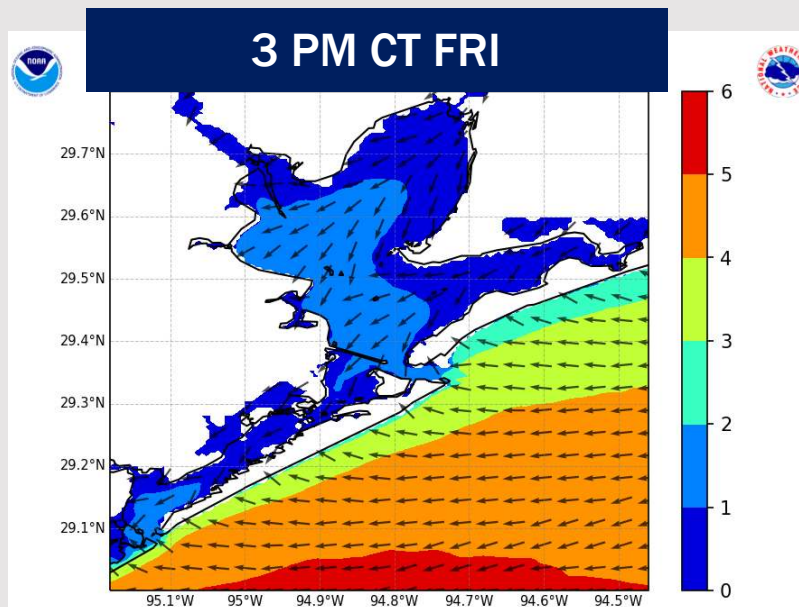
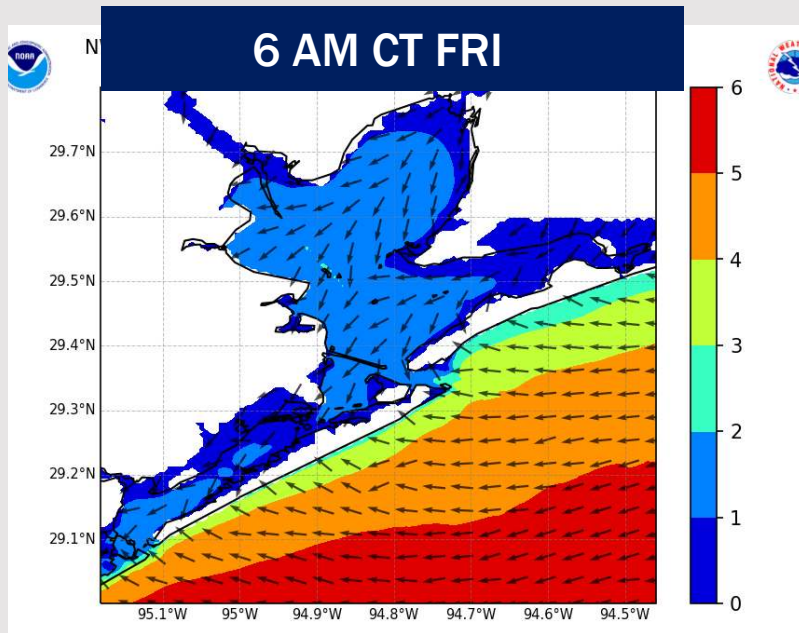


Current Radar: 12:50 PM CT



As always, please do not hesitate to reach out to us with any forecast questions via the chat option on Clarity or our on-call number, **(317)-560-8122** press 1 for forecast questions.

# Wave Height Forecast Update



Wave heights are anticipated to decrease to 2' – 3' for the Boarding Station through 8 PM THU.

Beyond 8 PM THU, wave heights will gradually increase back towards 4' – 5', by 6 AM Friday.

Wave heights will remain at 4' – 5' through 3 PM Friday before decreasing to 3' – 4' through the rest of the day.

# Houston Pilots Extended Range Visibility Report



Sunday 12/8/24

Fog not favored for SUN.

### Forecast Confidence



Tuesday 12/10/24

Fog not favored for TUE.

### Forecast Confidence



Monday 12/9/24

Fog not favored for MON.

### Forecast Confidence



### Chance for Fog

Sunday AM	Unlikely
Sunday PM	Unlikely
Monday AM	Unlikely
Monday PM	Unlikely
Tuesday AM	Unlikely
Tuesday PM	Unlikely

# Houston Pilots Visibility Chart (miles)



Visibility	Thu 1 pm	Thu 2 pm	Thu 3 pm	Thu 4 pm	Thu 5 pm	Thu 6 pm	Thu 7 pm	Thu 8 pm	Thu 9 pm	Thu 10 pm	Thu 11 pm	Fri 12 am	Fri 1 am	Fri 2 am	Fri 3 am	Fri 4 am	Fri 5 am	Fri 6 am	Fri 7 am	Fri 8 am	Fri 9 am	Fri 10 am	Fri 11 am	Fri 12 pm
Houston Pilots N - 610 Bridge	6.9	9	10	10	10	10	10	10	10	10	10	10	10	10	10	10	10	10	10	10	10	10	10	10
Houston Pilots M - Kinder 1	6.9	10	10	10	10	10	10	10	10	10	10	10	10	10	10	10	10	10	10	10	10	10	10	10
Houston Pilots L - Greens Bayou	8	10	10	10	10	10	10	10	10	10	10	10	10	10	10	10	10	10	10	10	10	10	10	10
Houston Pilots K - Shell Crude	8	10	10	10	10	10	10	10	10	10	10	10	10	10	10	10	10	10	10	10	10	10	10	10
Houston Pilots J - Lynchburg Ferries	8	10	10	10	10	10	10	10	10	10	10	10	10	10	10	10	10	10	10	10	10	10	10	10
Houston Pilots I - Exxon 3	8	10	10	10	10	10	10	10	10	10	10	10	10	10	10	10	10	10	10	10	10	10	10	10
Houston Pilots H - Morgans Point	9	10	10	10	10	10	10	10	10	10	10	10	10	10	10	10	10	10	10	10	10	10	10	10
Houston Pilots G - 75/76	5.9	6.9	9	10	10	10	10	10	10	10	10	10	10	10	10	10	10	10	10	10	10	10	10	10
Houston Pilots F - 63/64	5.9	6.9	8	10	10	10	10	10	10	10	10	10	10	10	10	10	10	10	10	10	10	10	10	10
Houston Pilots E - 51/52	5.9	5.9	6.9	8	9	10	10	10	10	10	10	10	10	10	10	10	10	10	10	10	10	10	10	10
Houston Pilots D - 37/38	5.9	5.9	6.9	8	9	10	10	10	10	10	10	10	10	10	10	10	10	10	10	10	10	10	10	10
Houston Pilots C - 25/26	4.9	5.9	6.9	6.9	9	10	10	10	10	10	10	10	10	10	10	10	10	10	10	10	10	10	10	10
Houston Pilots B - 11/12	4.9	5.9	5.9	6.9	6.9	10	10	10	10	10	10	10	10	10	10	10	10	10	10	10	10	10	10	10
Houston Pilots A - 1 & 2 Bravo	4.9	4.9	5.9	5.9	6.9	6.9	9	9	9	9	9	10	10	10	10	10	10	10	10	10	9	6.9	9	10

NOTE: This is automated data that may/may not agree with the official BAM thinking that's found on the daily slides or special visibility report slides. This data should be used as a guide only



# Houston Pilots Wind Chart



Forecast Confidence



Sustained wind 10 Knots

Gusts 15 Knots

Wind from the SE

Example

10

15

↖

Wind	Thu 1 pm	Thu 2 pm	Thu 3 pm	Thu 4 pm	Thu 5 pm	Thu 6 pm	Thu 7 pm	Thu 8 pm	Thu 9 pm	Thu 10 pm	Thu 11 pm	Fri 12 am	Fri 1 am	Fri 2 am	Fri 3 am	Fri 4 am	Fri 5 am	Fri 6 am	Fri 7 am	Fri 8 am	Fri 9 am	Fri 10 am	Fri 11 am	Fri 12 pm
Houston Pilots N - 610 Bridge	10	12	12	12	12	12	10	10	10	10	12	12	10	10	10	10	10	10	10	10	10	10	10	10
	22	23	24	24	24	22	21	21	21	21	22	21	21	21	20	20	20	20	18	20	20	20	21	20
	✓	✓	✓	✓	✓	✓	✓	✓	✓	✓	✓	✓	✓	✓	✓	✓	✓	✓	✓	✓	✓	✓	✓	✓
Houston Pilots M - Kinder 1	12	12	12	12	12	12	10	10	10	12	12	12	10	10	10	10	10	10	10	10	10	10	10	10
	23	23	24	23	24	22	21	21	21	21	22	21	21	21	21	20	20	20	20	20	20	20	21	20
	✓	✓	✓	✓	✓	✓	✓	✓	✓	✓	✓	✓	✓	✓	✓	✓	✓	✓	✓	✓	✓	✓	✓	✓
Houston Pilots L - Greens Bayou	12	12	12	12	12	12	10	10	10	10	12	10	10	10	10	10	10	10	10	10	10	10	10	10
	23	23	24	24	23	22	20	21	21	21	22	22	21	21	21	20	20	20	20	21	20	20	20	20
	✓	✓	✓	✓	✓	✓	✓	✓	✓	✓	✓	✓	✓	✓	✓	✓	✓	✓	✓	✓	✓	✓	✓	✓
Houston Pilots K - Shell Crude	12	12	12	12	12	12	10	10	10	12	12	10	10	10	10	10	10	10	10	10	10	10	10	10
	22	23	24	24	23	22	21	21	21	21	22	22	22	22	21	21	21	21	21	21	21	20	21	20
	✓	✓	✓	✓	✓	✓	✓	✓	✓	✓	✓	✓	✓	✓	✓	✓	✓	✓	✓	✓	✓	✓	✓	✓
Houston Pilots J - Lynchburg Ferries	13	13	13	13	13	12	10	10	10	10	10	10	10	10	10	10	10	10	10	10	10	10	10	10
	23	24	24	23	23	22	21	21	21	21	22	22	21	21	21	20	20	20	20	20	20	20	20	20
	✓	✓	✓	✓	✓	✓	✓	✓	✓	✓	✓	✓	✓	✓	✓	✓	✓	✓	✓	✓	✓	✓	✓	✓
Houston Pilots I - Exxon 3	14	14	14	15	15	15	15	15	16	16	17	17	17	17	17	16	16	15	15	15	15	14	13	13
	22	23	24	23	24	23	22	22	23	23	23	23	23	23	23	22	22	22	22	22	21	21	21	20
	✓	✓	✓	✓	✓	✓	✓	✓	✓	✓	✓	✓	✓	✓	✓	✓	✓	✓	✓	✓	✓	✓	✓	✓
Houston Pilots H - Morgans Point	13	14	15	15	15	15	15	15	16	16	17	17	17	17	17	16	16	16	15	15	15	14	14	13
	22	23	23	24	24	23	22	23	23	23	24	24	24	24	24	23	23	23	22	22	22	21	22	21
	✓	✓	✓	✓	✓	✓	✓	✓	✓	✓	✓	✓	✓	✓	✓	✓	✓	✓	✓	✓	✓	✓	✓	✓
Houston Pilots G - 75/76	15	15	16	16	17	17	17	17	18	18	20	20	20	21	20	20	20	20	20	18	17	17	16	15
	24	25	25	26	26	25	24	25	26	26	28	28	26	28	28	26	26	26	26	26	25	24	24	23
	✓	✓	✓	✓	✓	✓	✓	✓	✓	✓	✓	✓	✓	✓	✓	✓	✓	✓	✓	✓	✓	✓	✓	✓
Houston Pilots F - 63/64	15	15	16	17	17	17	17	17	18	20	20	21	21	22	22	21	21	21	20	20	17	17	15	
	24	25	26	26	26	26	24	25	26	26	28	28	28	28	28	28	28	28	26	26	25	25	24	
	✓	✓	✓	✓	✓	✓	✓	✓	✓	✓	✓	✓	✓	✓	✓	✓	✓	✓	✓	✓	✓	✓	✓	✓
Houston Pilots E - 51/52	15	16	17	17	18	18	17	18	20	20	21	21	21	22	22	21	21	21	20	20	18	17	16	
	24	25	26	26	26	26	25	26	28	28	29	28	28	29	29	28	28	28	28	26	26	26	25	
	✓	✓	✓	✓	✓	✓	✓	✓	✓	✓	✓	✓	✓	✓	✓	✓	✓	✓	✓	✓	✓	✓	✓	✓
Houston Pilots D - 37/38	16	17	17	17	18	18	18	20	20	20	21	21	21	22	22	21	22	21	21	20	18	17	17	
	25	25	26	28	26	26	26	26	29	29	29	29	29	29	29	29	29	29	28	28	28	26	25	
	✓	✓	✓	✓	✓	✓	✓	✓	✓	✓	✓	✓	✓	✓	✓	✓	✓	✓	✓	✓	✓	✓	✓	✓
Houston Pilots C - 25/26	16	17	17	18	18	18	18	18	20	20	21	21	21	22	22	21	21	21	20	20	18	17	17	
	25	26	28	28	26	26	26	26	29	29	29	29	29	30	30	29	29	29	28	28	28	26	26	
	✓	✓	✓	✓	✓	✓	✓	✓	✓	✓	✓	✓	✓	✓	✓	✓	✓	✓	✓	✓	✓	✓	✓	✓
Houston Pilots B - 11/12	16	17	17	17	17	17	17	17	18	18	20	20	20	20	20	20	20	20	18	20	18	17	17	
	24	25	26	26	26	26	26	26	29	29	29	29	29	30	30	29	29	29	28	28	28	26	25	
	✓	✓	✓	✓	✓	✓	✓	✓	✓	✓	✓	✓	✓	✓	✓	✓	✓	✓	✓	✓	✓	✓	✓	✓
Houston Pilots A - 1 & 2 Bravo	17	18	20	20	21	21	20	22	22	22	22	23	22	23	23	22	22	22	22	21	20	20	20	
	26	28	29	29	30	30	29	30	30	31	31	32	31	32	32	31	31	31	29	30	29	29	29	
	✓	✓	✓	✓	✓	✓	✓	✓	✓	✓	✓	✓	✓	✓	✓	✓	✓	✓	✓	✓	✓	✓	✓	✓

NOTE: This is automated data that may/may not agree with the official BAM thinking that's found on the daily slides.  
This data should be used as a guide only.

# Houston Pilots: THU. 12/5/2024

## Forecast Discussion

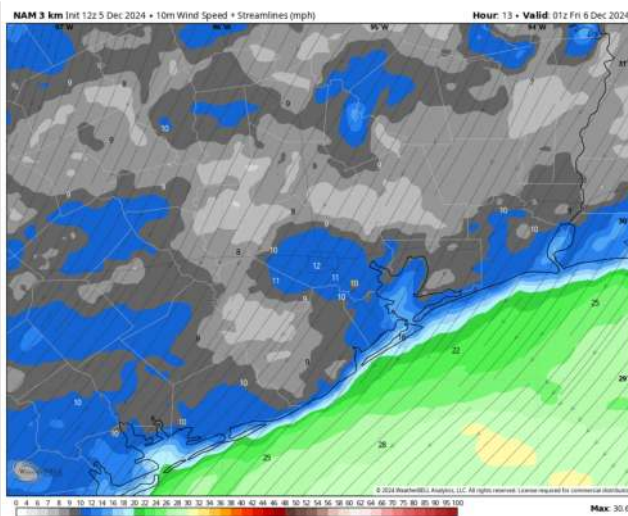
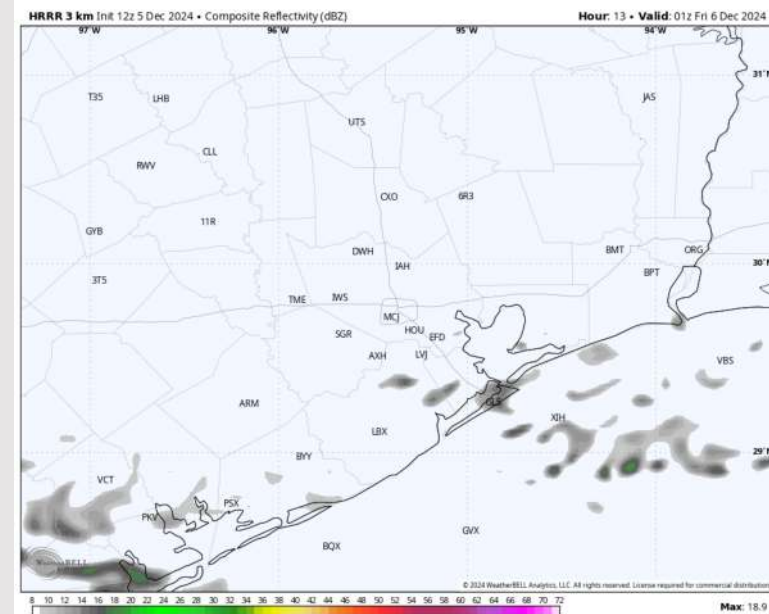
**Precip:** Favoring mainly dry conditions N of Morgan's Point with pockets of drizzle possible S of Morgan's Point through 7 PM

**Wind:** Winds will be out of the NE throughout the rest of the day. **N of Morgan's Point:** Winds will be at 7 – 11 kts through the rest of the day. **S of Morgan's Point:** Winds will be at 15 – 20 kts for the rest of today. **Wind gusts of 20 – 30 kts in play for all Stations for the rest of the day**

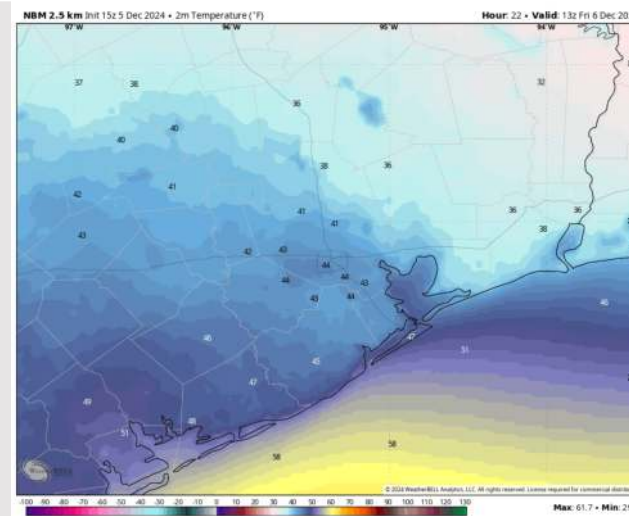
**Low Temps:** **N of Morgan's Point:** Low 40s F. **S of Morgan's Point:** Upper 40s F.

**Visibility:** No visibility concerns for the rest of the day

## Precip Image: 7 PM CT



**Wind Speed:**  
7 PM CT



**Low Temps**  
**FRI AM**



# Houston Pilots: FRI. 12/6/2024

## Forecast Discussion

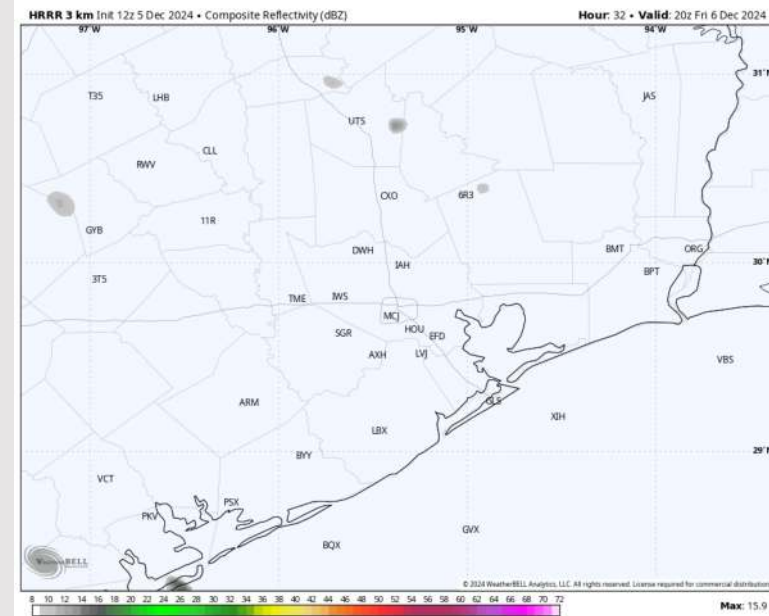
**Precip:** Favoring dry conditions throughout the day on Friday.

**Wind:** Winds will be out of the NE for all of Friday. **N of Morgan's Point:** Winds will be at 5 – 10 kts for the day on Friday. **S of Morgan's Point:** Winds will be at 16 – 20 kts through 12 PM, decreasing slightly to 13 – 16 kts for the rest of Friday. **Wind gusts of 20 – 25 kts in play for all Stations from 12 AM to 12 PM.**

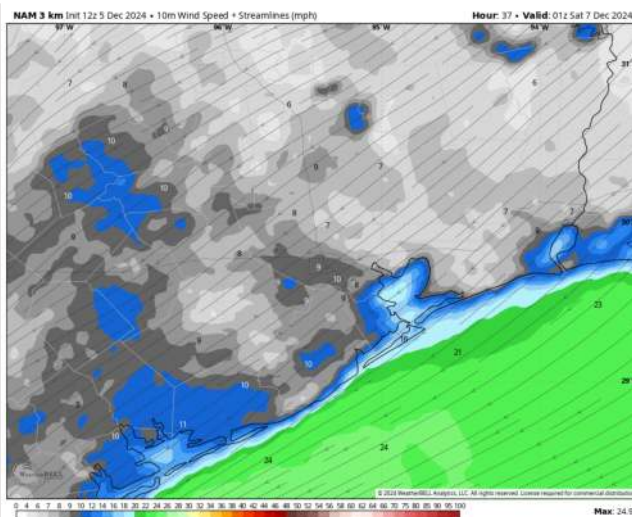
**High Temps:** **N of Morgan's Point:** Mid 50s F. **S of Morgan's Point:** Mid to Upper 50s F.

**Visibility:** No visibility concerns for Friday.

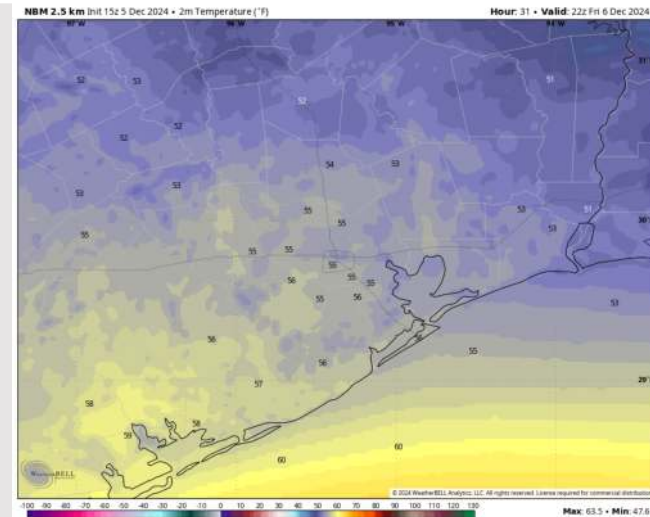
## Precip Image: 2 PM CT



Wind Speed  
7 PM CT



High Temps  
Friday



# Houston Pilots: SAT. 12/7/2024

## Forecast Discussion

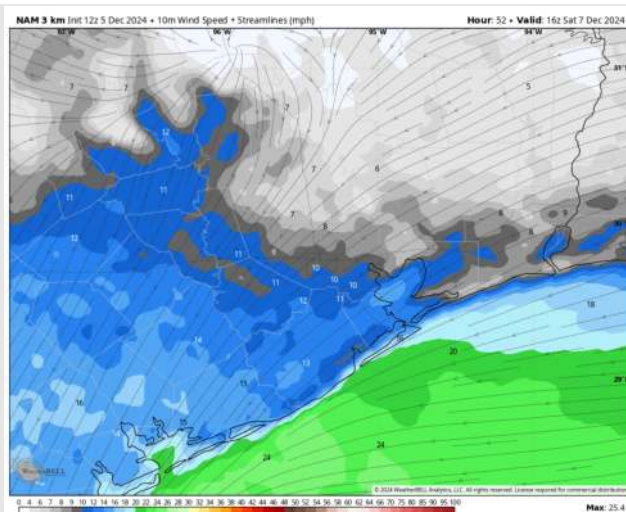
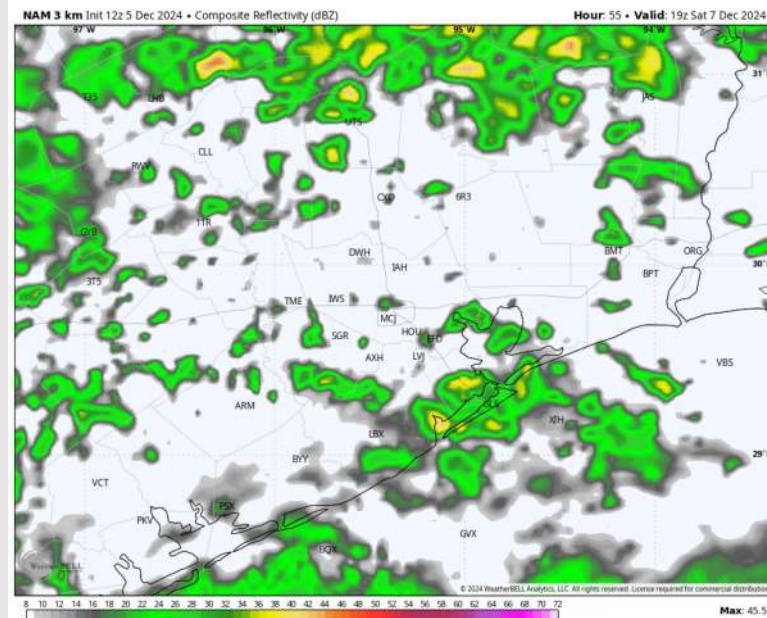
**Precip:** Isolated showers will be possible through 7 AM, then become scattered for the rest of the day on Saturday.

**Wind:** Winds will be out of the ENE through Saturday. **N of Morgan's Point:** Winds will be at 5 - 10 kts throughout the day on Saturday. **S of Morgan's Point:** Winds will be at 15 - 20kts throughout the day on Saturday. **Wind gusts of 20 - 25 kts will be in play for Stations S of Morgan's Point through 7 PM.**

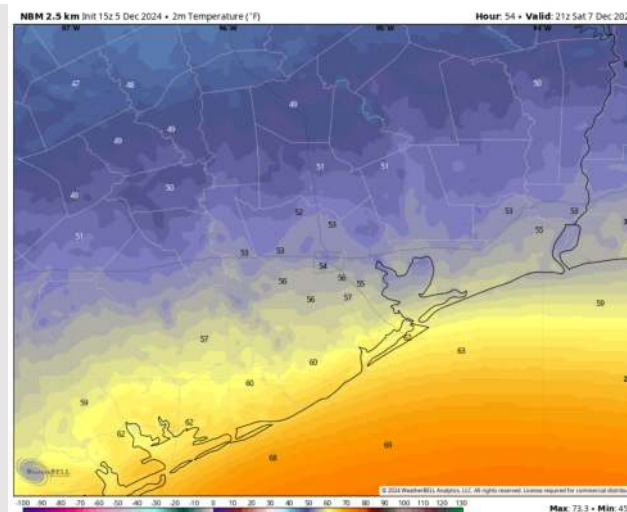
**High Temps:** **N of Morgan's Point:** Mid 50s F. **S of Morgan's Point:** Low 60s F.

**Visibility:** No fog concerns but showers may briefly reduce visibility.

## Precip Image: 1 PM CT



Wind Speed:  
10 AM CT

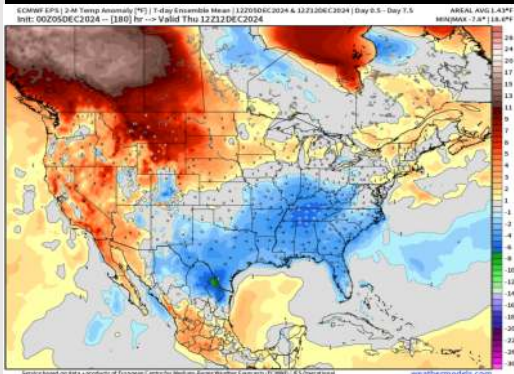


High Temps  
Saturday

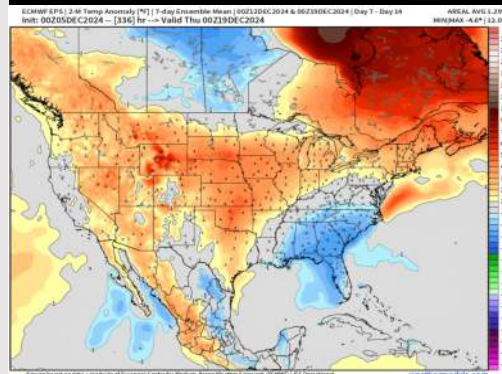


# Houston Pilots: 12/5/24

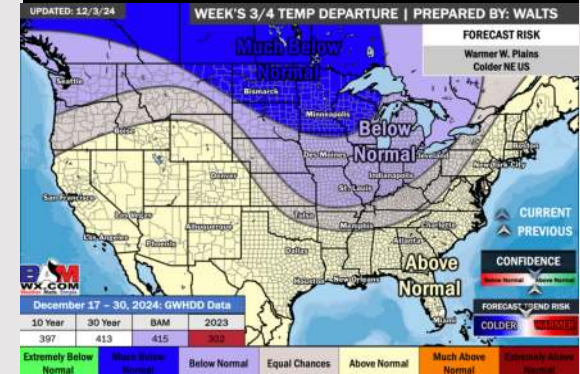
## Next 7 Day Temperature Departure



## 8-14 Day Temperature Departure



## 15-30 Day Temperature Departure



## Next 7 Day Total Precipitation

