

Houston Pilots Forecast Package



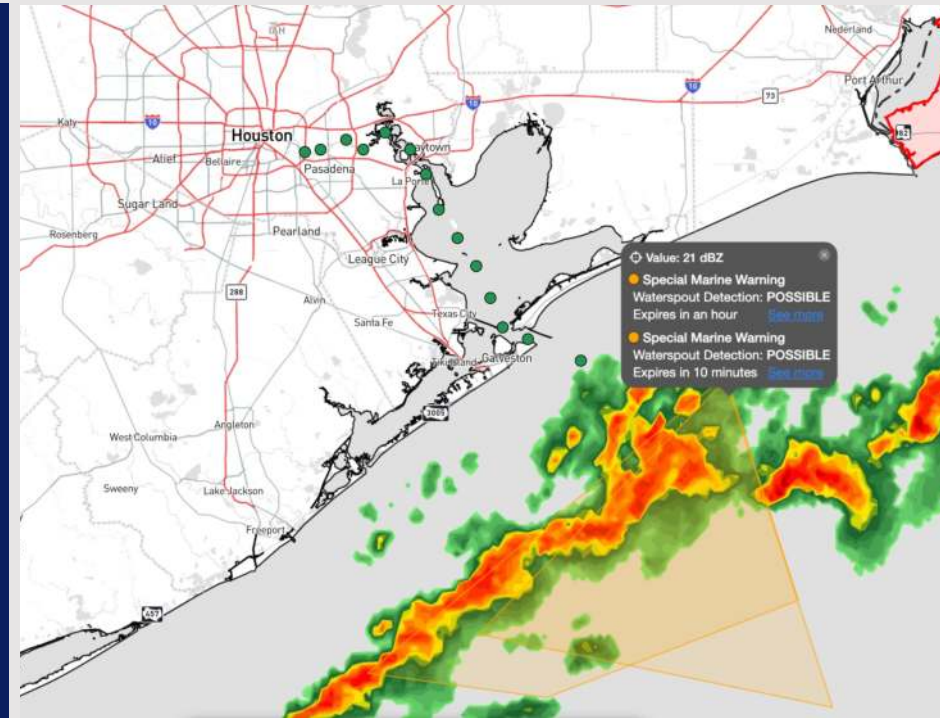
Updated: 12:15 AM CT

Thursday, December 26, 2024

Forecaster: Xander Lowry

Weather Headlines

- **Strong-to-severe storms will return on Saturday PM. All modes of severe weather are on the table.**
- **Patchy fog risks will be in play this morning, tonight, and into SAT AM.**
- **Drier conditions favored to end the weekend.**



Current Radar: 12:05 AM CT

As always, please do not hesitate to reach out to us with any forecast questions at **(317)-560-8122**. Press **1** for forecast questions.

You can also access real-time forecast updates and 24/7 meteorological chat assistance on your **Clarity** app. Click [here](#) for login assistance.



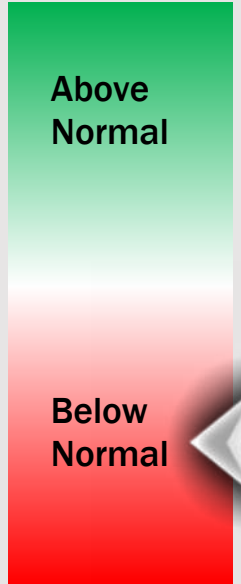
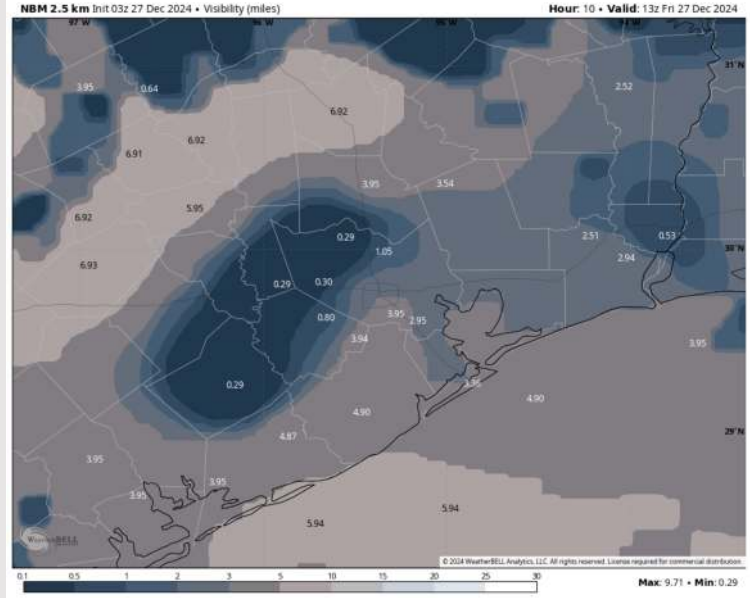
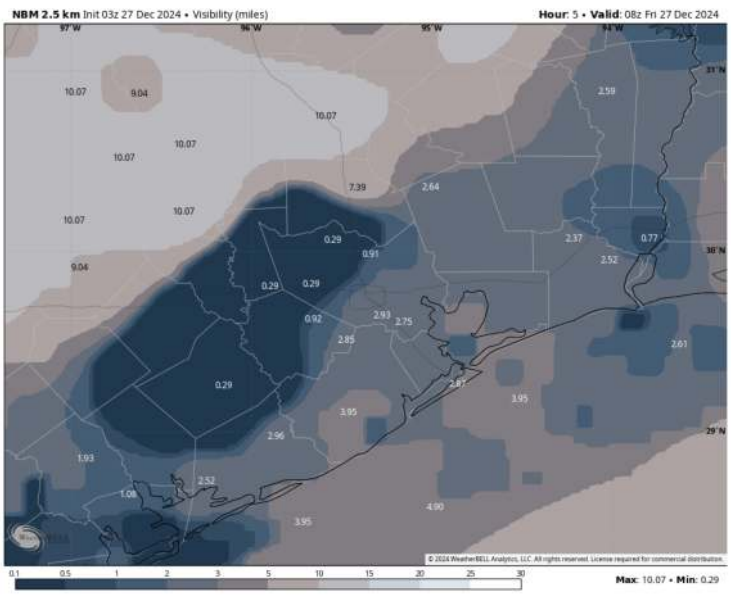
Houston Pilots Visibility Report



2 AM CST FRI VISIBILITY

7 AM CST FRI VISIBILITY

Confidence



TIMEFRAME DISCUSSED	THREAT
Current - 10 AM FRI	Low

- Patchy fog continues to linger to the NW/W of the Houston Metro. While the greatest risks will likely remain NW of all stations, isolated-to-patchy risks for fog/mist will remain throughout the morning. Favoring this to only be a threat for stations N of Morgan's Point.
- Visibilities of less than 2 miles will be favored, with localized visibilities of less than 1/2 mile to be possible. The greatest timeframe of risk will be between 12 AM - 7 AM FRI.
- Confidence is slightly lower in terms of how quickly fog will develop AND how quickly it can expand to stations N of Morgan's Point.

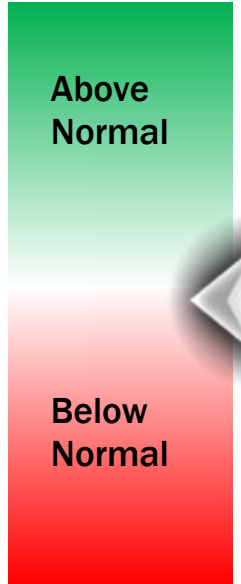
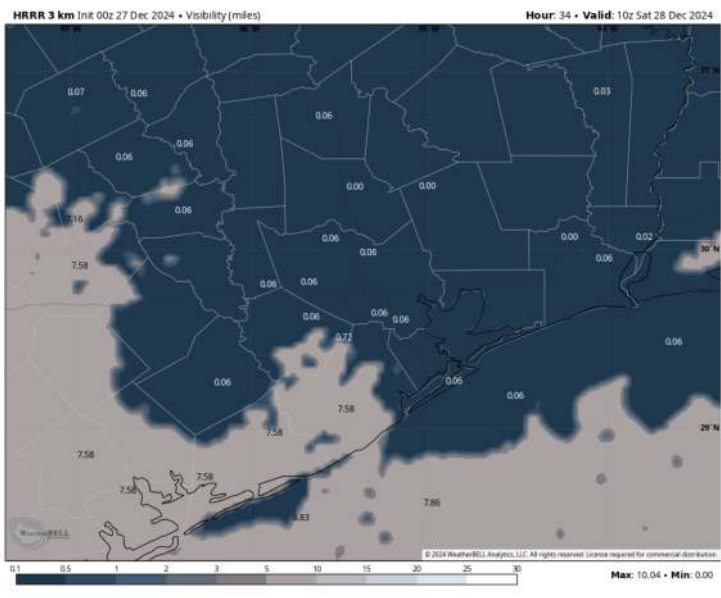
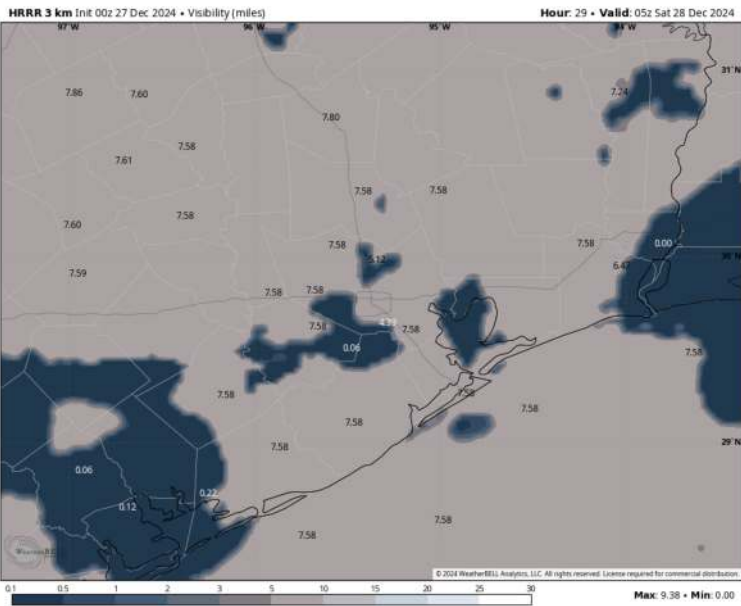
Houston Pilots Visibility Report



11 PM CT FRI VISIBILITY

4 AM CT SAT VISIBILITY

Confidence



TIMEFRAME DISCUSSED	THREAT
5 PM FRI – 9AM SAT	Medium

- Sea Fog risks will return as early as 5 PM FRI in an isolated fashion for stations S of Morgan’s Point. After 8 PM is when all stations will be at risk through 9 AM SAT AM.
- The time frame of greatest risk for all stations will be between 9 AM FRI – 4 AM SAT. Reduced visibility of ½ mile or less will be in play for all stations during this timeframe. Risks outside this timeframe will be reduced visibility down to 1–2 miles for all stations.
- After 4 AM SAT, scattered downpours and severe storms are favored to work into the area. Scattered pockets of fog will continue to be possible between showers/storms for the rest of the morning SAT.

Houston Pilots Extended Range Visibility Report



Monday 12/30/24

Not favoring any fog concerns for Monday.



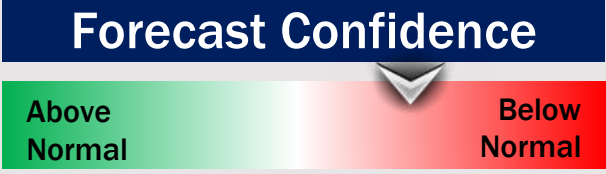
Wednesday 1/1/25

Not favoring any fog concerns for Wednesday.



Tuesday 12/31/24

Monitoring for a low-end, isolated sea fog risk for Tuesday AM. Confidence is low.



Chance for Fog

Monday AM	Unlikely
Monday PM	Unlikely
Tuesday AM	Low
Tuesday PM	Unlikely
Wednesday AM	Unlikely
Wednesday PM	Unlikely

Houston Pilots Visibility Chart (miles)



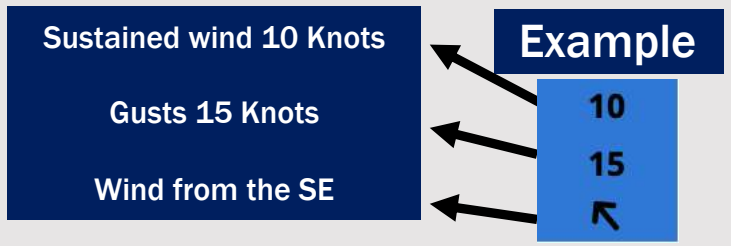
Forecast Confidence



Visibility	Fri 1 am	Fri 2 am	Fri 3 am	Fri 4 am	Fri 5 am	Fri 6 am	Fri 7 am	Fri 8 am	Fri 9 am	Fri 10 am	Fri 11 am	Fri 12 pm	Fri 1 pm	Fri 2 pm	Fri 3 pm	Fri 4 pm	Fri 5 pm	Fri 6 pm	Fri 7 pm	Fri 8 pm	Fri 9 pm	Fri 10 pm	Fri 11 pm	Sat 12 am	
Houston Pilots N - 610 Bridge	3.9	2.9	2.5	2.5	2.5	2.9	2.9	2.9	3.9	6.9	10	10	10	10	10	10	10	10	10	10	10	10	8	6.9	
Houston Pilots M - Kinder 1	4.9	2.9	2.9	2.5	2	2.9	2.9	2.9	3.9	6.9	10	10	10	10	10	10	10	10	10	10	10	10	8	5.9	
Houston Pilots L - Greens Bayou	3.9	2.9	2.5	2.5	2	2.9	2.9	2.9	2.9	6.9	10	10	10	10	10	10	10	10	10	10	10	10	8	5.9	
Houston Pilots K - Shell Crude	4.9	2.9	2.9	2.5	2	2.9	2.9	2.9	3.9	6.9	10	10	10	10	10	10	10	10	10	10	10	10	8	5.9	
Houston Pilots J - Lynchburg Ferries	3.9	2.9	2.5	2	2	2.9	2.9	2.9	2.9	6.9	10	10	10	10	10	10	10	10	10	10	10	10	8	5.9	
Houston Pilots I - Exxon 3	4.9	2.9	2.9	2.5	2	2.9	2.9	2.9	3.9	6.9	10	10	10	10	10	10	10	10	10	10	10	10	6.9	4.9	
Houston Pilots H - Morgans Point	4.9	3.9	2.9	2.5	2	2.9	2.9	2.9	3.9	6.9	10	10	10	10	10	10	10	10	10	10	10	10	6.9	4.9	
Houston Pilots G - 75/76	4.9	4.9	2.9	2.9	2.9	2.9	2.9	3.9	3.9	6.9	9	10	10	10	10	10	10	10	10	10	10	9	6.9	8	0.2
Houston Pilots F - 63/64	4.9	4.9	2.9	2.9	2.9	2.9	2.9	3.9	3.9	6.9	9	10	10	10	10	10	10	10	10	10	10	7.9	6.9	8	0.2
Houston Pilots E - 51/52	3.9	4.9	1.1	2.9	2.9	2.9	2.9	3.9	2.9	5.9	9	10	10	10	9	9	10	10	10	10	6.9	6.9	5	0	
Houston Pilots D - 37/38	3.9	4.9	1.1	2.9	2.9	2.9	2.9	3.9	2.9	5.9	9	10	10	10	9	9	10	10	10	9	6.9	5.9	4	0	
Houston Pilots C - 25/26	3.9	4.9	2.9	2.9	2.9	2.9	2.9	3.9	2.9	5.9	9	10	10	10	9	9	9	10	10	9	6.9	5.9	1.6	0	
Houston Pilots B - 11/12	3.9	4.9	3.9	2.9	2.9	2.9	3.9	3.9	2.9	5.9	7.9	9	10	10	9	7.9	9	10	10	7.9	6.9	4.9	0.2	0	
Houston Pilots A - 1 & 2 Bravo	4.9	4.9	2	3.9	3.9	3.9	3.9	4.9	3.9	5.9	7.9	7.9	10	7.9	7.9	7.9	9	9	10	7.9	6.9	4.9	0	0	

NOTE: This is automated data that may/may not agree with the official BAM thinking that's found on the daily slides or special visibility report slides. This data should be used as a guide only

Houston Pilots Wind Chart



Wind	Fri 1 am	Fri 2 am	Fri 3 am	Fri 4 am	Fri 5 am	Fri 6 am	Fri 7 am	Fri 8 am	Fri 9 am	Fri 10 am	Fri 11 am	Fri 12 pm	Fri 1 pm	Fri 2 pm	Fri 3 pm	Fri 4 pm	Fri 5 pm	Fri 6 pm	Fri 7 pm	Fri 8 pm	Fri 9 pm	Fri 10 pm	Fri 11 pm	Sat 12 am
Houston Pilots N - 610 Bridge	3 8 ↘	3 7 ↘	3 7 ↘	3 7 ↘	2 6 ↘	1 5 ↘	1 5 ↘	1 5 ↘	1 3 ←	1 5 ←	2 6 ←	3 7 ↑	3 8 ↑	3 9 ↑	3 9 ↑	5 9 ↑	5 9 ↑	3 8 ↑	3 7 ↑	3 8 ↑	3 8 ↑	5 9 ↑	5 9 ↑	5 9 ↑
Houston Pilots M - Kinder 1	3 8 ↘	3 7 ↘	3 7 ↘	3 7 ↘	2 6 ↘	1 5 ↘	1 5 ↘	1 5 ↘	1 3 ←	1 5 ←	2 6 ←	3 7 ↑	3 8 ↑	3 9 ↑	3 9 ↑	5 9 ↑	5 9 ↑	5 8 ↑	3 7 ↑	3 8 ↑	3 8 ↑	5 9 ↑	5 9 ↑	5 9 ↑
Houston Pilots L - Greens Bayou	3 8 ↘	3 7 ↘	3 7 ↘	3 7 ↘	2 6 ↘	2 5 ↘	1 5 ↘	1 5 ↘	1 5 ↓	1 5 ↓	2 6 ←	3 7 ↑	3 8 ↑	3 8 ↑	5 9 ↑	5 9 ↑	5 9 ↑	5 8 ↑	3 7 ↑	3 8 ↑	3 8 ↑	5 9 ↑	5 9 ↑	5 9 ↑
Houston Pilots K - Shell Crude	3 8 ↘	3 7 ↘	3 7 ↘	3 7 ↘	2 6 ↘	2 6 ↘	1 5 ↘	1 5 ↘	1 5 ↓	1 5 ↓	2 6 ←	3 7 ↑	3 8 ↑	3 9 ↑	5 9 ↑	5 9 ↑	5 9 ↑	5 8 ↑	5 7 ↑	3 8 ↑	5 8 ↑	5 9 ↑	5 9 ↑	5 9 ↑
Houston Pilots J - Lynchburg Ferries	3 7 ↘	3 7 ↘	3 7 ↘	3 7 ↘	2 6 ↘	1 5 ↘	1 5 ↘	1 5 ↘	1 3 ←	1 5 ←	1 6 ←	2 7 ↑	3 8 ↑	3 8 ↑	3 9 ↑	5 9 ↑	5 9 ↑	5 8 ↑	3 8 ↑	3 8 ↑	3 8 ↑	5 9 ↑	5 9 ↑	3 9 ↑
Houston Pilots I - Exxon 3	6 9 →	6 8 →	6 8 →	6 7 →	5 7 →	3 7 →	3 6 →	3 5 →	3 5 →	3 6 →	3 6 →	3 8 →	5 9 →	5 10 →	6 10 →	6 10 →	6 10 →	6 10 →	6 9 →	7 10 →	7 10 →	7 10 →	8 10 →	8 12 →
Houston Pilots H - Morgans Point	6 9 →	6 8 →	6 8 →	5 7 →	5 7 →	3 7 →	3 6 →	3 5 →	3 5 →	3 6 →	3 6 →	3 7 →	5 9 →	5 10 →	6 10 →	6 10 →	6 9 →	6 9 →	6 9 →	6 10 →	6 10 →	6 10 →	7 10 →	7 10 →
Houston Pilots G - 75/76	7 10 →	7 9 →	6 8 →	6 8 →	6 7 →	5 7 →	3 7 →	3 5 →	3 6 →	3 6 →	3 7 →	3 7 →	5 9 →	5 10 →	5 10 →	6 10 →	6 9 →	6 9 →	7 10 →	7 10 →	8 10 →	8 12 →	8 12 →	8 12 →
Houston Pilots F - 63/64	7 9 →	6 9 →	6 8 →	6 8 →	6 7 →	5 7 →	5 7 →	3 6 →	3 6 →	3 6 →	3 7 →	3 7 →	3 8 →	3 8 →	3 9 →	5 9 →	6 9 →	6 9 →	6 10 →	7 10 →	7 10 →	8 12 →	8 12 →	8 12 →
Houston Pilots E - 51/52	7 10 →	6 9 →	6 9 →	6 8 →	6 7 →	5 7 →	5 7 →	3 6 →	3 6 →	3 6 →	3 7 →	3 7 →	3 8 →	3 8 →	3 8 →	5 9 →	6 9 →	6 8 →	6 8 →	6 9 →	6 9 →	7 10 →	8 10 →	8 12 →
Houston Pilots D - 37/38	7 10 →	6 9 →	6 9 →	6 9 →	6 8 →	5 7 →	5 7 →	3 6 →	3 6 →	3 6 →	3 7 →	3 7 →	3 8 →	3 8 →	3 8 →	5 9 →	5 8 →	6 8 →	6 8 →	6 9 →	6 9 →	7 10 →	8 10 →	8 12 →
Houston Pilots C - 25/26	7 10 →	6 9 →	6 9 →	6 9 →	6 8 →	5 7 →	5 7 →	3 6 →	3 6 →	3 6 →	3 7 →	3 7 →	5 8 →	5 8 →	5 8 →	3 8 →	5 8 →	6 8 →	6 8 →	6 9 →	6 9 →	7 10 →	8 10 →	8 12 →
Houston Pilots B - 11/12	6 12 →	6 10 →	6 10 →	6 9 →	6 9 →	5 8 →	5 7 →	3 7 →	3 7 →	3 7 →	3 7 →	3 8 →	5 8 →	5 8 →	5 8 →	5 9 →	5 8 →	5 8 →	5 8 →	6 9 →	6 9 →	6 10 →	6 10 →	7 12 →
Houston Pilots A - 1 & 2 Bravo	9 14 ↗	8 13 →	8 13 →	8 12 →	8 10 →	7 10 →	6 10 →	6 9 →	5 8 →	5 7 →	5 8 →	5 8 →	5 8 →	5 7 →	3 7 →	3 8 →	3 8 →	5 8 →	6 8 →	6 7 →	6 7 →	7 12 →	8 12 →	8 13 →

NOTE: This is automated data that may/may not agree with the official BAM thinking that's found on the daily slides. This data should be used as a guide only.

Houston Pilots: FRI. 12/27/2024



Forecast Discussion

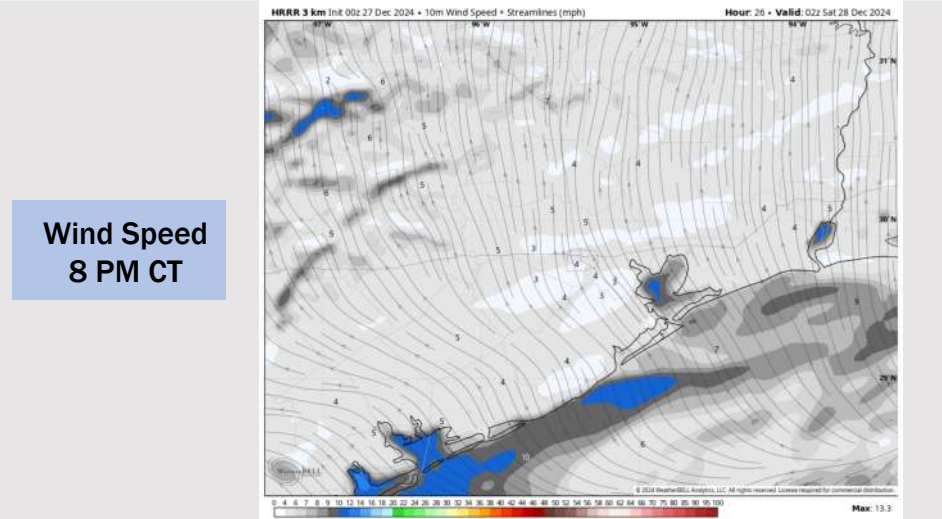
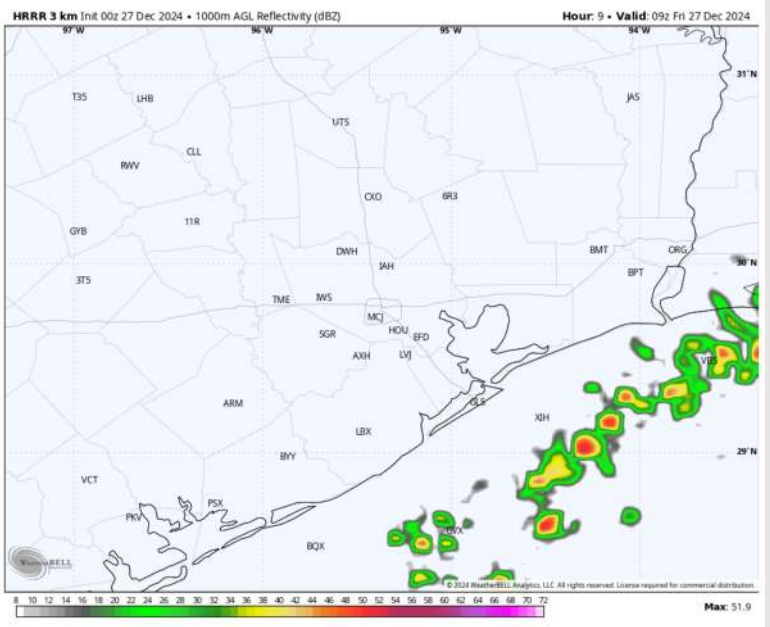
Precip: Lingering scattered (30-40%) showers/storms will be possible through 4 AM for the boarding station. Favoring dry conditions after 4 AM for all stations. **Isolated wind gusts of 30-40 kts will be possible with any storm.**

Wind: Winds will be out of the NW, becoming variable after 7 AM, before settling out of the SE after 7 PM. **N of Morgan's Point:** Winds will be at 2 - 7 kts throughout the day. **S of Morgan's Point:** Winds will be at 3 - 8 kts through the day.

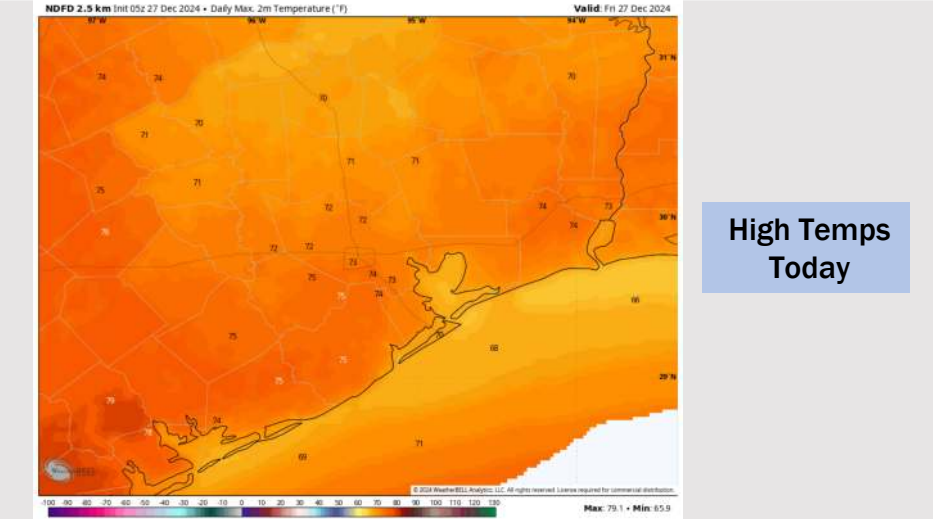
High Temps: **N of Morgan's Point:** Mid-70s F. **S of Morgan's Point:** Upper 60s F, near 70 F.

Visibility: Patchy sea fog risks will need to be monitored during the AM and late PM. See the corresponding visibility slide for additional info.

Precip Image: 3 AM CT



Wind Speed
8 PM CT



High Temps
Today

Houston Pilots: SAT. 12/28/2024



Forecast Discussion

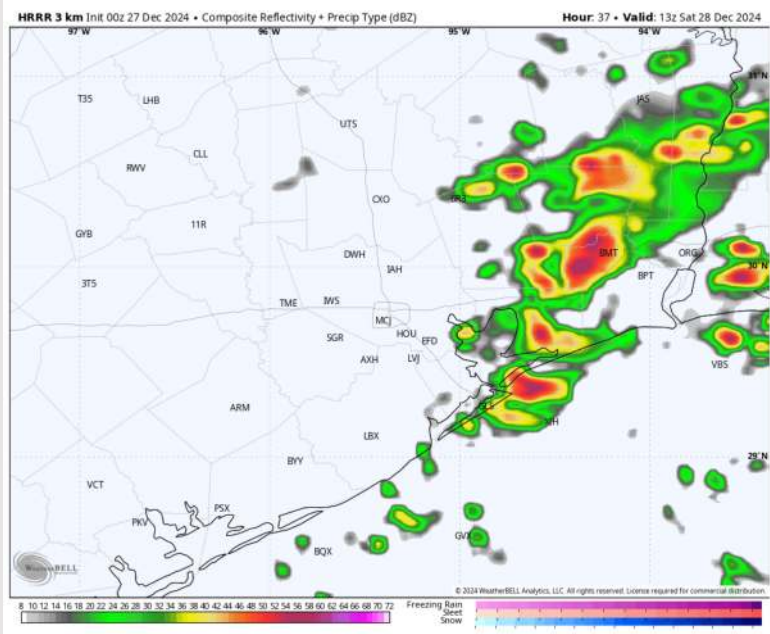
Precip: Scattered showers and storms (40-50%) are favored from 3 AM – 8 PM on Saturday. **A few strong to severe storms with large hail, 45-55 + kts wind gusts, and tornadoes will be possible.**

Wind: Winds will be out of the SE through 11 AM before shifting to be out of the SW for the rest of Saturday. **N of Morgan's Point:** Winds will be at 2 - 7 kts through 11 AM before increasing to 8 - 13 kts for the rest of the day. **S of Morgan's Point:** Winds will start at 5 - 10 kts through 1 PM before increasing to 11 - 16 kts for the remainder of Saturday. **A few non-thunderstorm gusts of 20 - 25 kts will be possible from 11 AM - 6 PM for all Stations.**

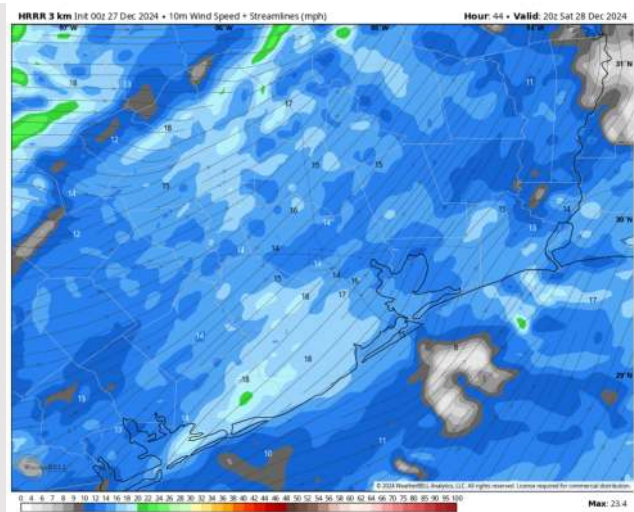
High Temps: **N of Morgan's Point:** Upper 70s F. **S of Morgan's Point:** Upper 60s to Lower 70s F.

Visibility: Visibility may be reduced under downpours Saturday AM along with Sea Fog being a risk prior to storms arriving SAT AM. Check the corresponding visibility slide.

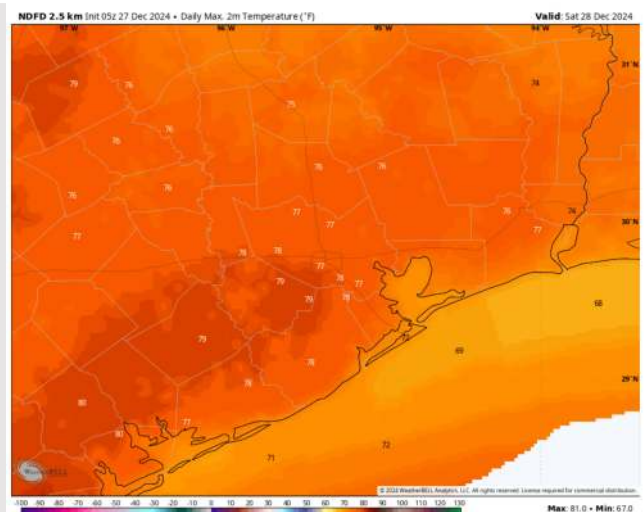
Precip Image: 7 AM CT



Wind Speed:
2 PM CT



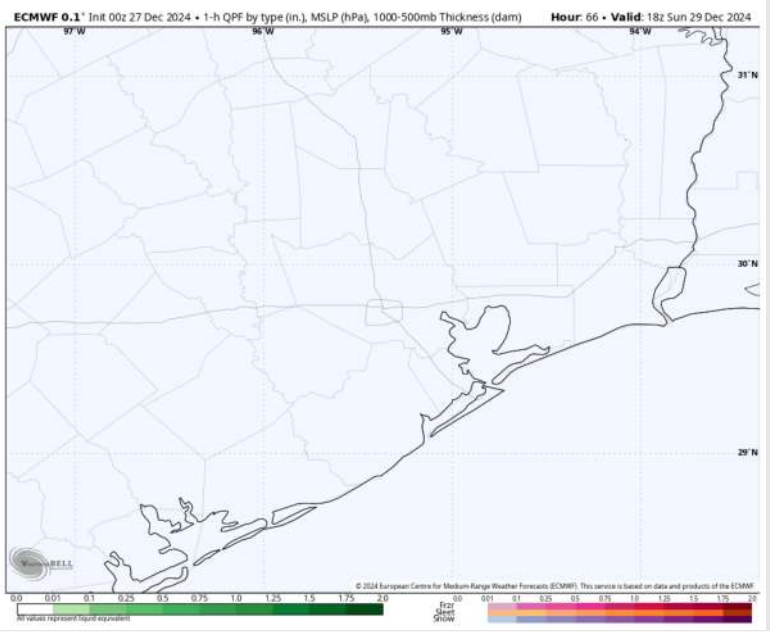
High Temps
Saturday



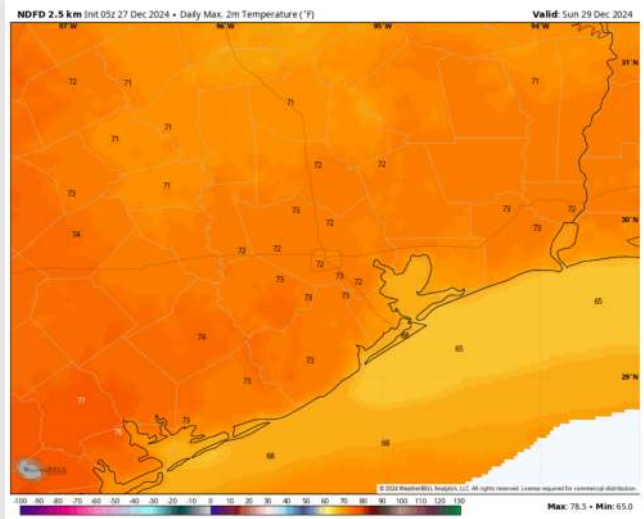
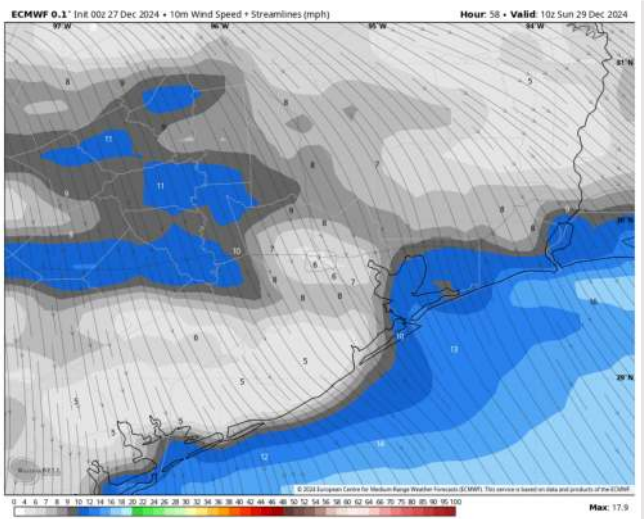
Forecast Discussion

- Precip:** Dry condition favored for all stations Sunday.
- Wind:** Winds direction will be out of the NW through 7 PM before shifting to be out of the SW for the rest of the day. **N of Morgan's Point:** Winds will be 3 – 8 kts throughout Sunday. **S of Morgan's Point:** Winds will be at 6 – 11 kts through 10 AM before decreasing to 2 – 7 kts for the rest of Sunday.
- High Temps:** **N of Morgan's Point:** Lower 70s F. **S of Morgan's Point:** Mid-60s F.
- Visibility:** Not favoring any visibility concerns for Sunday.

Precip Image: 12 PM CT

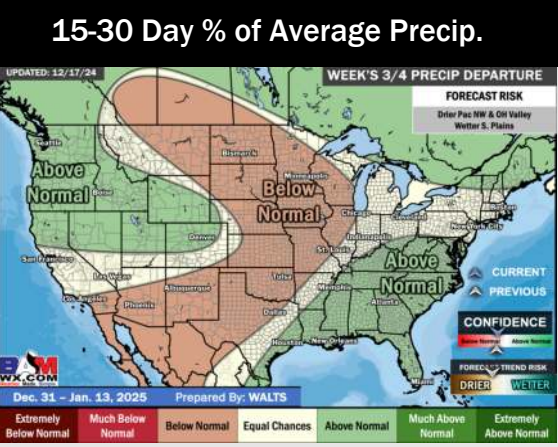
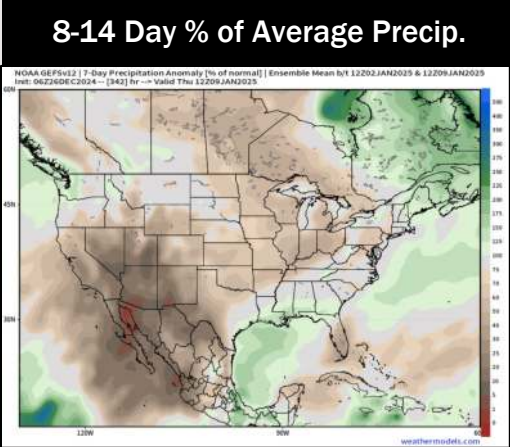
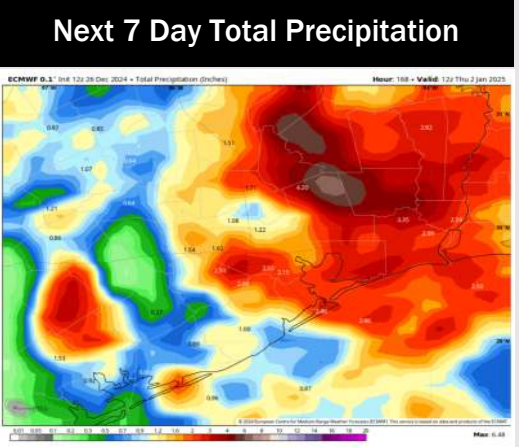
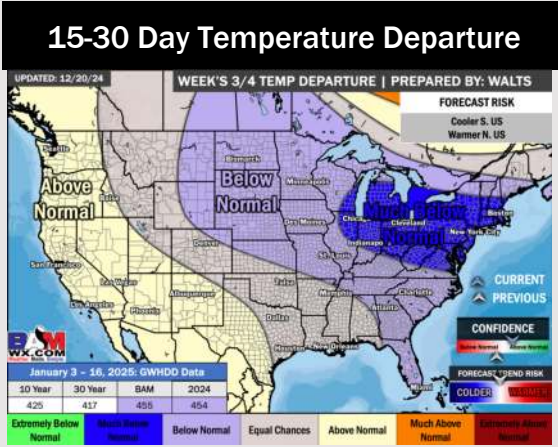
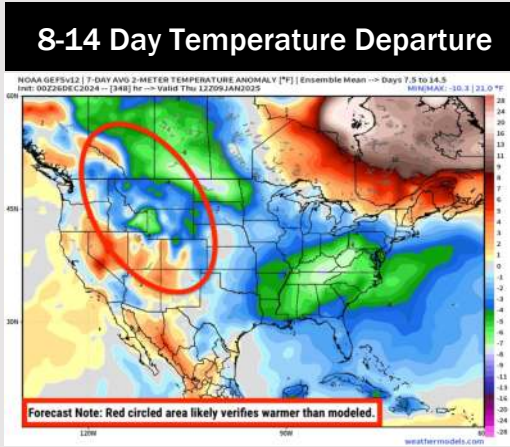


Wind Speed:
4 AM CT



High Temps
Sunday

Houston Pilots: 12/27/24



- Temps are expected to be much above normal for the week 1 timeframe. Rain chances continue through the weekend with rain tapering off by next week.
- Slightly below normal temperatures and near normal rainfall are expected for week 2.
- Near normal temperatures and above normal precipitation chances are expected for the weeks 3/4 timeframe.