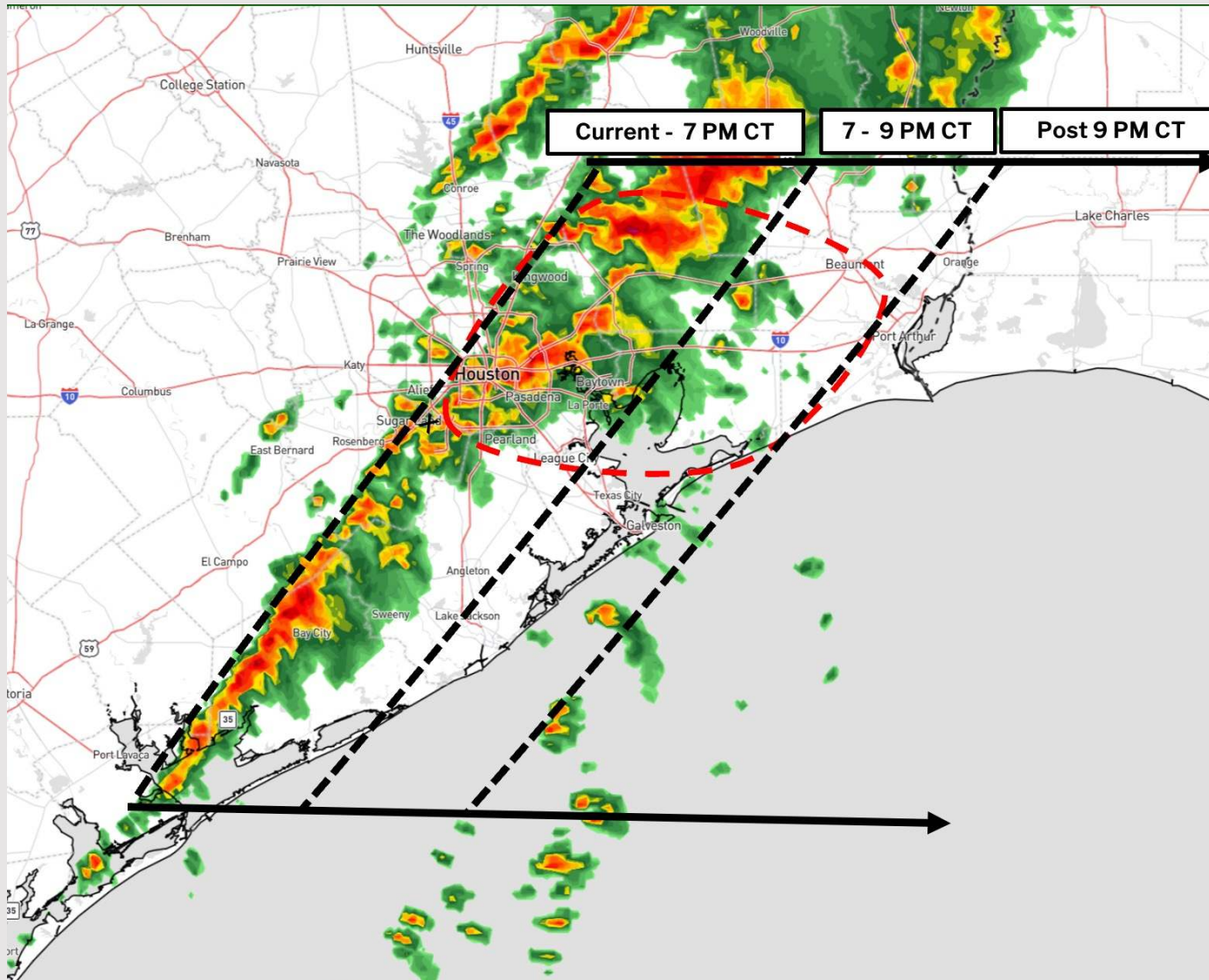


# Severe Storms Update



The graphic shows the greatest timeframes of risk for a progressing line of storms. Lingering pockets of shower / storms will be possible after these times.

Wind gusts of 45 – 55 kts, large hail, and tornadoes are possible within this line.

**Area in Red** at greatest severe risk through 9 PM CT this evening.

The strongest storms are expected to pass after the end times listed in the graphic. (Houston Metro 7 PM, Galveston Bay 9 PM)

# Houston Pilots Forecast Package



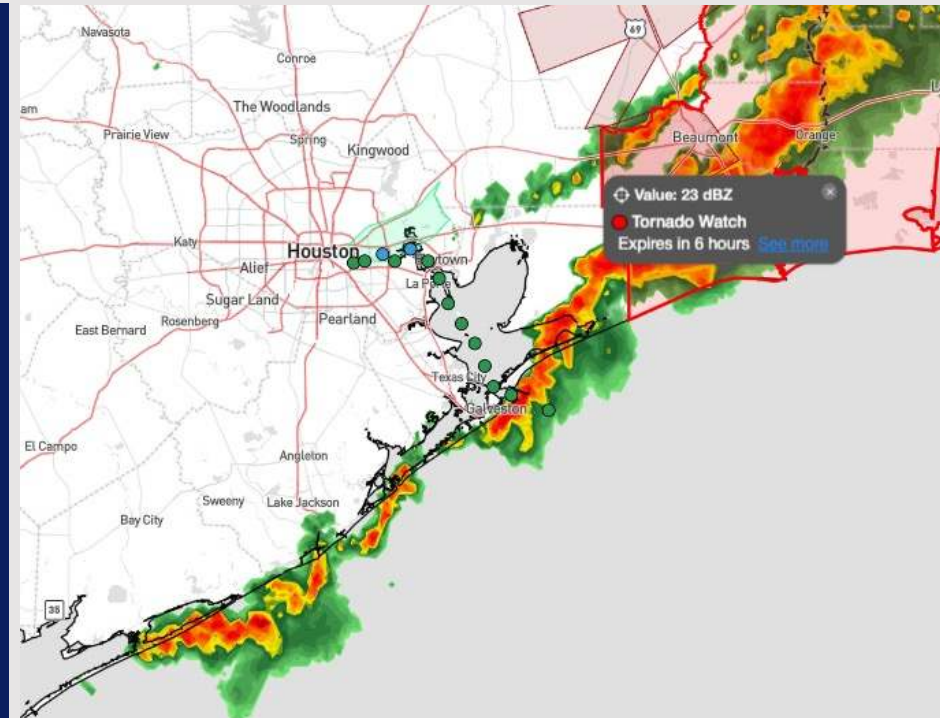
Updated: 8:00 PM CT

Thursday, December 26, 2024

Forecaster: Xander Lowry

## Weather Headlines

- Strong to severe storms are expected to exit by 9 PM CT for all stations.
- Patchy fog risks will be in play tonight and into Friday AM. See the visibility slide for more details.
- Strong to severe storms are possible again on Saturday.



Current Radar: 7:55 PM CT

As always, please do not hesitate to reach out to us with any forecast questions at **(317)-560-8122**. Press 1 for forecast questions.

You can also access real-time forecast updates and 24/7 meteorological chat assistance on your [Clarity](#) app. Click [here](#) for login assistance.



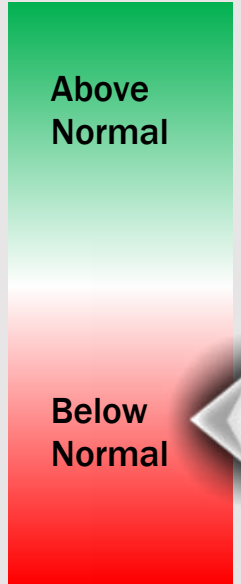
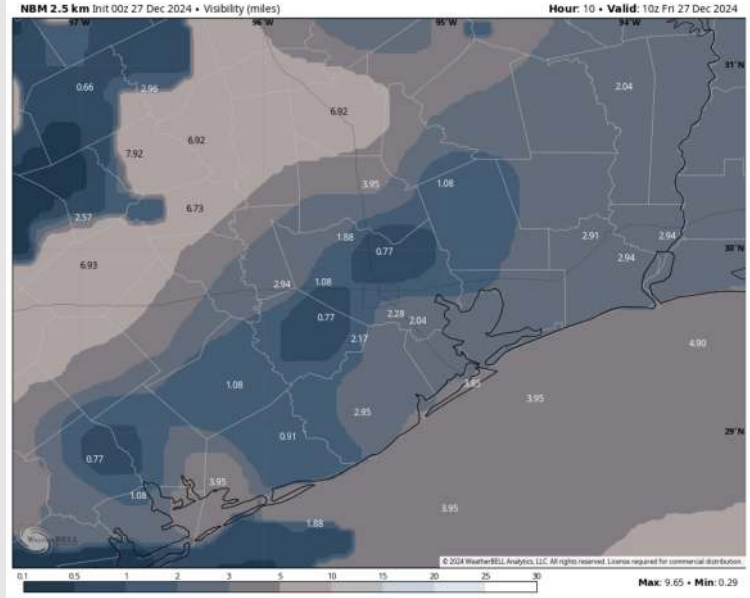
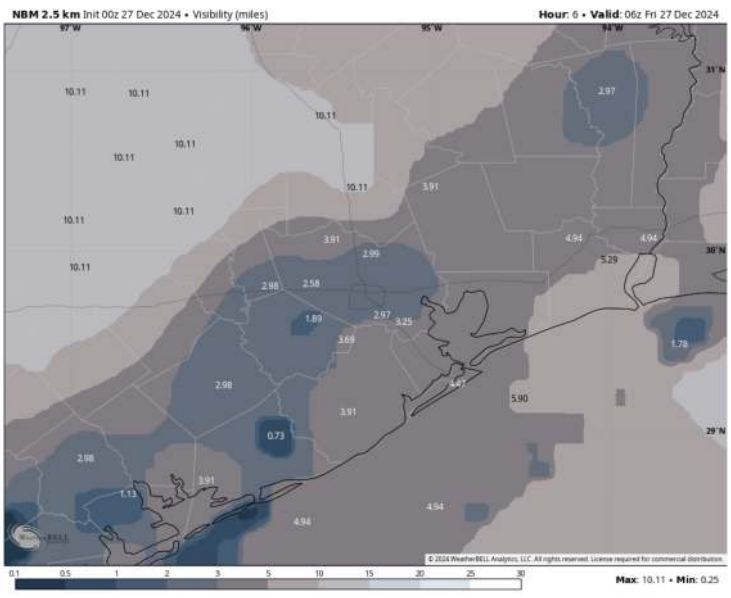
# Houston Pilots Visibility Report



## 12 AM CST FRI VISIBILITY

## 4 AM CST FRI VISIBILITY

## Confidence



TIMEFRAME DISCUSSED	THREAT
Current - 10 AM FRI	Low

- Patchy fog has begun to develop to the W/NW of the Houston Metro. Patchy fog is favored to slowly work into the area over the next few hours, with the greatest timeframe of risk starting at 12 AM FRI. Fog risk is favored to remain N of Morgan's point.
- Visibilities of less than 2 miles will be favored, with localized visibilities of less than 1/2 mile to be possible. The greatest timeframe of risk will be between 12 AM - 8 AM FRI.
- Confidence is slightly lower in terms of how quickly fog will develop AND how quickly it can expand to include all stations.

# Houston Pilots Extended Range Visibility Report



## Sunday 12/29/24

Not favoring any fog concerns for Sunday.



## Monday 12/30/24

Not favoring any fog concerns for Monday.



## Tuesday 12/31/24

Monitoring for a low end, isolated sea fog risk for Tuesday AM. Confidence is low.



## Chance for Fog

Sunday AM	Unlikely
Sunday PM	Unlikely
Monday AM	Unlikely
Monday PM	Unlikely
Tuesday AM	Low
Tuesday PM	Unlikely



# Houston Pilots Visibility Chart (miles)



## Forecast Confidence



Visibility	Thu 2 pm	Thu 3 pm	Thu 4 pm	Thu 5 pm	Thu 6 pm	Thu 7 pm	Thu 8 pm	Thu 9 pm	Thu 10 pm	Thu 11 pm	Fri 12 am	Fri 1 am	Fri 2 am	Fri 3 am	Fri 4 am	Fri 5 am	Fri 6 am	Fri 7 am	Fri 8 am	Fri 9 am	Fri 10 am	Fri 11 am	Fri 12 pm	Fri 1 pm
Houston Pilots N - 610 Bridge	6.9	6.9	3	3.9	4.9	6.9	6.9	6.9	6.9	5.9	5.9	4.9	3.9	2.9	2.9	1.1	0.8	1.1	0.5	0.3	5.9	10	10	10
Houston Pilots M - Kinder 1	6.9	6.9	3.9	4.9	4.9	6.9	6.9	6.9	6.9	5.9	5.9	4.9	3.9	2.9	2.9	1.1	0.8	1.1	0.5	0.3	5.9	10	10	10
Houston Pilots L - Greens Bayou	5.9	6.9	6.9	4.9	4.9	6.9	6.9	6.9	6.9	5.9	4.9	4.9	3.9	2.9	2.9	1.1	0.8	0.8	0.5	0.3	5.9	9	10	10
Houston Pilots K - Shell Crude	6.9	6.9	6.9	4.9	4.9	6.9	6.9	6.9	6.9	5.9	4.9	4.9	3.9	2.9	2.9	1.1	0.8	0.8	0.5	0.3	5.9	9	10	10
Houston Pilots J - Lynchburg Ferries	5.9	6.9	6.9	4.9	4.9	6.9	6.9	6.9	6.9	5.9	4.9	4.9	3.9	2.9	2.9	1.1	0.8	0.8	0.5	0.3	5.9	9	10	10
Houston Pilots I - Exxon 3	5.9	6.9	6.9	6.9	5.9	6.9	6.9	6.9	6.9	5.9	4.9	4.9	3.9	2.9	2.9	1.1	0.8	0.8	0.5	0.3	5.9	9	10	10
Houston Pilots H - Morgans Point	5.9	6.9	6.9	6.9	5.9	5.9	6.9	6.9	6.9	5.9	4.9	4.9	3.9	2.9	2.9	1.1	0.8	0.8	0.5	0.3	5.9	9	10	10
Houston Pilots G - 75/76	6.9	6.9	6.9	6.9	6.9	5.9	6.9	5.9	5.9	4.9	3.9	4.9	4.9	3.9	3.9	3.9	1.1	1.1	0.5	0.3	4.9	6.9	7.9	9
Houston Pilots F - 63/64	6.9	6.9	6.9	6.9	6.9	5.9	6.9	3	5.9	4.9	3.9	4.9	4.9	3.9	3.9	3.9	1.1	1.1	0.5	0.3	4.9	6.9	6.9	9
Houston Pilots E - 51/52	6.9	6.9	6.9	6.9	6.9	6.9	5.9	3	3.9	3.9	3.9	4.9	4.9	4.9	4.9	3.9	2.9	2.5	0.8	0.3	4.9	6.9	6.9	9
Houston Pilots D - 37/38	6.9	6.9	6.9	6.9	6.9	6.9	6.9	5.9	3.9	2	3.9	4.9	4.9	4.9	4.9	3.9	2.9	2.9	0.8	0.3	4.9	6.9	6.9	9
Houston Pilots C - 25/26	6.9	6.9	7.9	6.9	6.9	6.9	6.9	6.9	3.9	5.9	6.9	4.9	4.9	4.9	4.9	3.9	2.9	2.9	0.8	0.3	4.9	6.9	7.9	9
Houston Pilots B - 11/12	6.9	6.9	6.9	6.9	6.9	6.9	6.9	6.9	3.9	5.9	6.9	4.9	4.9	4.9	4.9	3.9	3.9	2.9	0.8	2	4.9	6.9	6.9	9
Houston Pilots A - 1 & 2 Bravo	6.9	6.9	6.9	6.9	6.9	6.9	6.9	6.9	5.9	4.9	5.9	5.9	4.9	4.9	4.9	4.9	3.9	3.9	2.9	2.5	4.9	5.9	6.9	9

**NOTE: This is automated data that may/may not agree with the official BAM thinking that's found on the daily slides or special visibility report slides. This data should be used as a guide only**

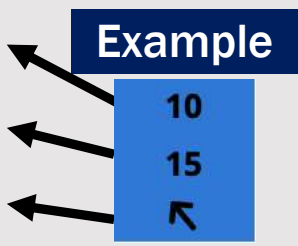
# Houston Pilots Wind Chart



## Forecast Confidence



Sustained wind 10 Knots  
Gusts 15 Knots  
Wind from the SE



Wind	Thu 2 pm	Thu 3 pm	Thu 4 pm	Thu 5 pm	Thu 6 pm	Thu 7 pm	Thu 8 pm	Thu 9 pm	Thu 10 pm	Thu 11 pm	Fri 12 am	Fri 1 am	Fri 2 am	Fri 3 am	Fri 4 am	Fri 5 am	Fri 6 am	Fri 7 am	Fri 8 am	Fri 9 am	Fri 10 am	Fri 11 am	Fri 12 pm	Fri 1 pm
Houston Pilots N - 610 Bridge	10 22 ↑	10 22 ↑	10 22 ↑	10 21 ↑	9 18 ↑	8 16 ↑	7 15 ↑	6 13 →	5 10 →	3 9 →	3 8 ↓	3 7 ↓	3 7 ↓	3 7 ↓	3 6 ↓	2 5 ↓	1 5 ↓	1 5 ↓	1 5 ↓	1 5 ↑	2 6 ↑	3 7 ↑	3 8 ↑	3 9 ↑
Houston Pilots M - Kinder 1	10 22 ↑	10 22 ↑	10 22 ↑	10 21 ↑	9 18 ↑	8 16 ↑	7 15 ↑	6 13 →	5 10 →	3 9 →	3 8 ↓	3 7 ↓	3 7 ↓	3 7 ↓	3 6 ↓	2 5 ↓	1 5 ↓	1 5 ↓	1 5 ↓	1 5 ↑	2 6 ↑	3 7 ↑	3 8 ↑	3 9 ↑
Houston Pilots L - Greens Bayou	10 22 ↑	10 21 ↑	10 21 ↑	10 20 ↑	9 18 ↑	8 16 ↑	7 15 ↑	6 13 →	5 12 →	3 9 →	3 8 ↓	3 7 ↓	3 7 ↓	3 6 ↓	3 6 ↓	2 5 ↓	2 5 ↓	1 5 ↓	1 5 ↓	1 5 ↑	2 6 ↑	2 7 ↑	3 8 ↑	3 9 ↑
Houston Pilots K - Shell Crude	10 22 ↑	10 21 ↑	10 21 ↑	10 20 ↑	9 18 ↑	8 16 ↑	7 15 ↑	6 13 →	6 12 →	5 9 →	3 8 ↓	3 7 ↓	3 7 ↓	3 6 ↓	3 6 ↓	2 5 ↓	2 5 ↓	1 5 ↓	1 5 ↓	1 5 ↑	2 6 ↑	2 7 ↑	3 8 ↑	5 9 ↑
Houston Pilots J - Lynchburg Ferries	10 22 ↑	10 21 ↑	10 21 ↑	10 20 ↑	9 18 ↑	8 16 ↑	7 15 ↑	6 13 →	5 10 →	3 9 →	3 8 ↓	3 7 ↓	3 7 ↓	2 6 ↓	2 6 ↓	2 5 ↓	1 5 ↓	1 5 ↓	1 5 ↓	1 5 ↑	2 6 ↑	2 7 ↑	3 8 ↑	3 9 ↑
Houston Pilots I - Exxon 3	13 22 ↑	13 21 ↑	13 21 ↑	13 20 ↑	13 20 ↑	12 18 ↑	10 16 ↑	9 15 →	8 13 →	7 12 →	6 9 →	6 8 ↓	6 8 ↓	6 7 ↓	5 7 ↓	5 7 ↓	3 7 ↓	3 6 ↓	3 6 ↓	3 6 ↓	3 6 ↑	3 7 ↑	3 8 ↑	5 10 ↑
Houston Pilots H - Morgans Point	13 22 ↑	13 21 ↑	13 21 ↑	13 20 ↑	13 20 ↑	12 18 ↑	10 16 ↑	9 15 →	8 13 →	7 12 →	6 9 →	6 8 ↓	6 8 ↓	5 7 ↓	5 7 ↓	3 7 ↓	3 7 ↓	3 6 ↓	3 6 ↓	3 6 ↓	3 7 ↑	3 8 ↑	3 9 ↑	5 10 ↑
Houston Pilots G - 75/76	13 22 ↑	13 22 ↑	14 23 ↑	14 22 ↑	14 22 ↑	14 20 ↑	13 17 ↑	12 15 ↑	10 15 ↑	9 13 →	8 12 →	8 9 →	7 8 ↓	6 8 ↓	6 7 ↓	5 7 ↓	5 7 ↓	3 7 ↓	3 6 ↓	3 6 ↓	3 7 ↑	3 8 ↑	5 9 ↑	5 10 ↑
Houston Pilots F - 63/64	13 22 ↑	13 22 ↑	14 23 ↑	14 22 ↑	14 21 ↑	14 20 ↑	13 17 ↑	12 15 ↑	10 15 ↑	9 13 →	8 12 →	7 9 →	6 8 ↓	6 8 ↓	6 7 ↓	5 7 ↓	5 7 ↓	3 7 ↓	3 7 ↓	3 7 ↓	3 7 ↑	3 8 ↑	3 9 ↑	5 10 ↑
Houston Pilots E - 51/52	13 22 ↑	13 22 ↑	14 22 ↑	14 22 ↑	14 21 ↑	14 20 ↑	13 17 ↑	12 16 ↑	10 15 ↑	8 14 →	8 12 →	7 10 →	6 9 →	6 8 ↓	6 7 ↓	5 7 ↓	5 7 ↓	3 7 ↓	3 7 ↓	3 7 ↓	3 7 ↑	3 8 ↑	3 9 ↑	5 10 ↑
Houston Pilots D - 37/38	13 22 ↑	14 22 ↑	14 22 ↑	14 22 ↑	14 21 ↑	14 20 ↑	13 18 ↑	12 16 ↑	10 15 ↑	8 14 →	8 12 →	7 10 →	6 9 →	6 8 ↓	6 7 ↓	5 7 ↓	5 7 ↓	3 7 ↓	3 7 ↓	3 7 ↓	3 7 ↑	3 8 ↑	3 9 ↑	5 10 ↑
Houston Pilots C - 25/26	13 22 ↑	14 22 ↑	14 22 ↑	14 22 ↑	13 21 ↑	13 20 ↑	12 18 ↑	10 16 ↑	10 15 ↑	8 14 →	8 13 →	7 10 →	6 9 →	6 9 →	6 8 ↓	5 7 ↓	5 7 ↓	3 7 ↓	3 7 ↓	3 7 ↓	3 7 ↑	5 8 ↑	5 9 ↑	5 10 ↑
Houston Pilots B - 11/12	13 22 ↑	13 21 ↑	13 22 ↑	13 21 ↑	13 20 ↑	12 18 ↑	10 17 ↑	10 15 ↑	9 15 ↑	8 13 →	7 12 →	6 10 →	6 9 →	6 8 ↓	6 8 ↓	5 8 ↓	5 8 ↓	3 7 ↓	3 7 ↓	3 7 ↓	5 7 ↑	5 8 ↑	5 9 ↑	6 10 ↑
Houston Pilots A - 1 & 2 Bravo	14 22 ↑	15 23 ↑	15 23 ↑	15 23 ↑	15 23 ↑	15 22 ↑	15 21 ↑	14 20 ↑	13 18 ↑	10 17 ↑	10 15 ↑	9 14 →	8 13 →	8 12 →	8 11 →	7 10 →	7 9 →	6 8 ↓	6 8 ↓	6 8 ↓	6 8 ↑	6 9 ↑	6 9 ↑	6 9 ↑

**NOTE: This is automated data that may/may not agree with the official BAM thinking that's found on the daily slides. This data should be used as a guide only.**

## Forecast Discussion

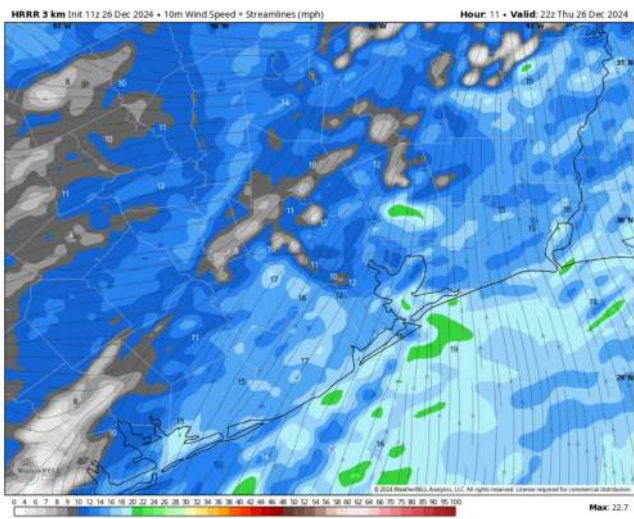
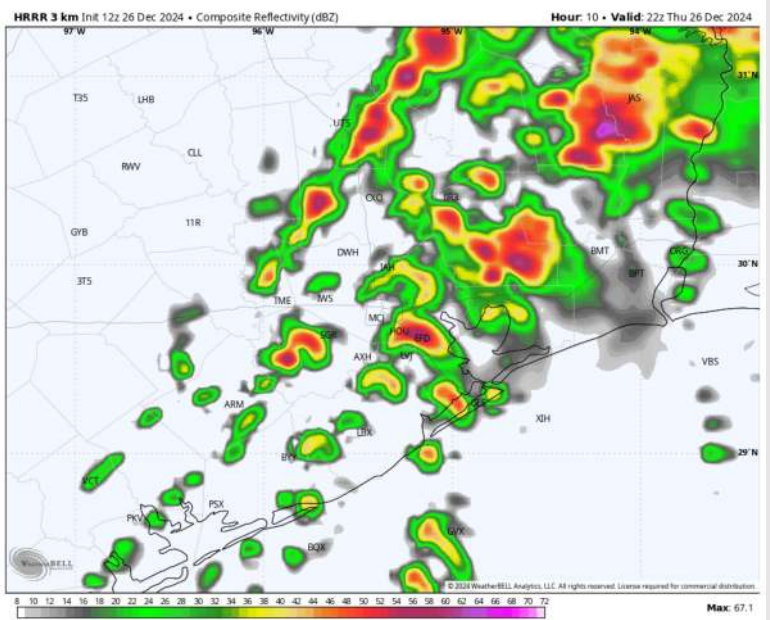
**Precip:** Scattered storms are favored to continue through 9PM as the front passes through. **Strong to severe storms will be favored, especially from 2PM to 5 PM, with gusty winds, a few tornadoes, and large hail as the primary hazards.**

**Wind:** Winds direction will be out of the S/SE through ~8PM where winds are expected to shift out of the NW as the front passes through. **N of Morgan's Point:** Non-storm related winds will be at 5 – 10 kts, decreasing to 3 – 8 kts after 8PM. **S of Morgan's Point:** Winds will be at 11– 16 kts, decreasing to 5 – 10 kts after 9PM. **A few strong to severe gusts of 35 - 50kts can't be ruled out through 5PM with the strongest storms.**

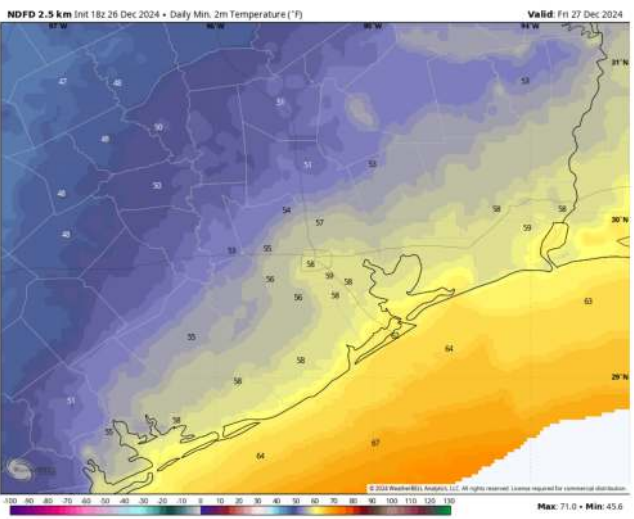
**Low Temps:** **N of Morgan's Point:** Upper 50s F. **S of Morgan's Point:** Lower 60s F.

**Visibility:** Visibilities will be reduced under heavy downpours. Fog is favored early FRI AM. See visibility slide above.

## Precip Image: 4 PM CT



Wind Speed:  
4 PM CT



Low Temps  
FRI AM



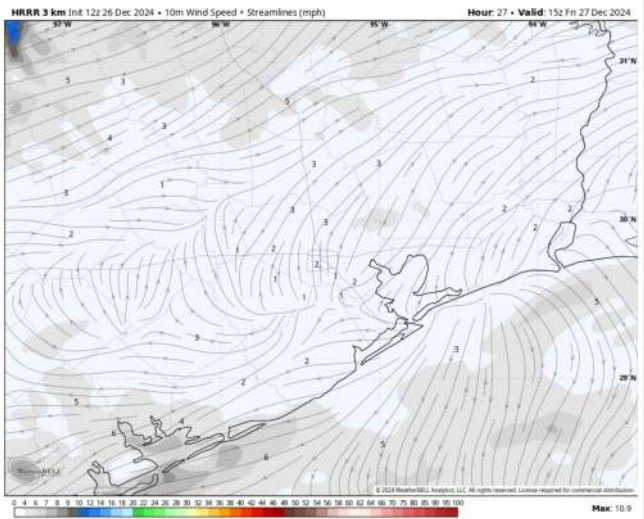
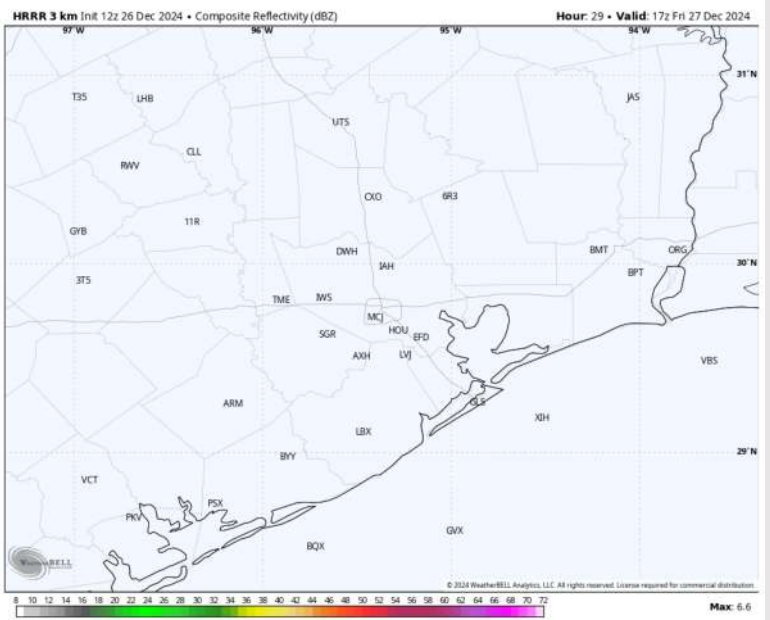
# Houston Pilots: FRI. 12/27/2024



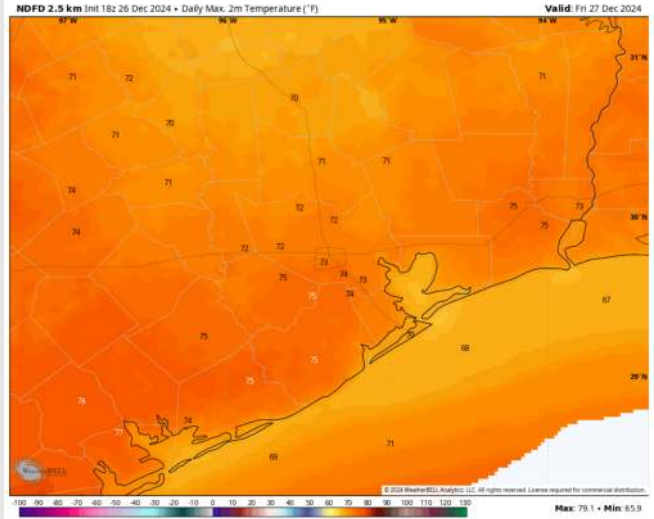
## Forecast Discussion

- Precip:** Favoring dry conditions for all of Friday.
- Wind:** Winds will be out of the NW, becoming variable after 7 AM, before settling out of the SE after 4 PM. **N of Morgan's Point:** Winds will be at 3 – 7 kts throughout Friday. **S of Morgan's Point:** Winds will be at 4 - 9 kts through the day.
- High Temps:** **N of Morgan's Point:** Mid 70s F. **S of Morgan's Point:** Upper 60s F to near 70 F.
- Visibility:** Patchy sea fog risks will need to be monitored during the AM. See visibility slide for additional info.

## Precip Image: 11 AM CT



Wind Speed  
9 AM CT



High Temps  
Friday



# Houston Pilots: SAT. 12/28/2024



## Forecast Discussion

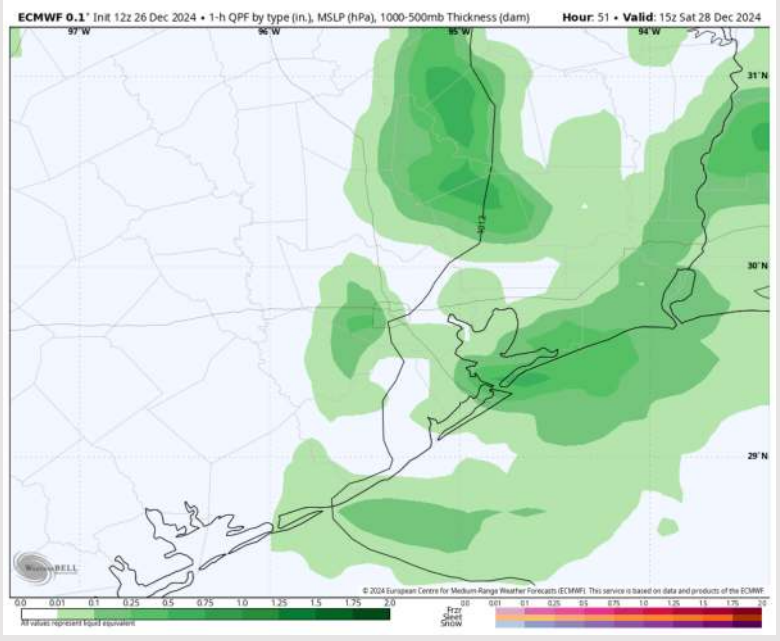
**Precip:** Scattered showers and storms will be favored (40%) from 5AM – 7PM on Saturday. **A few strong to severe storms with large hail, severe wind gusts, and tornadoes will be possible.**

**Wind:** Winds will "wobble" out of the SE to SW for the entire day. **N of Morgan's Point:** Winds will be at 5 - 10 kts throughout the day. **S of Morgan's Point:** Winds will start at 5 – 10kts through 1PM before increasing to 11 – 17 kts for the remainder of Saturday. **A few non-thunderstorm gusts of 20 – 25 kts will be possible from 11 AM – 7PM for all Stations.**

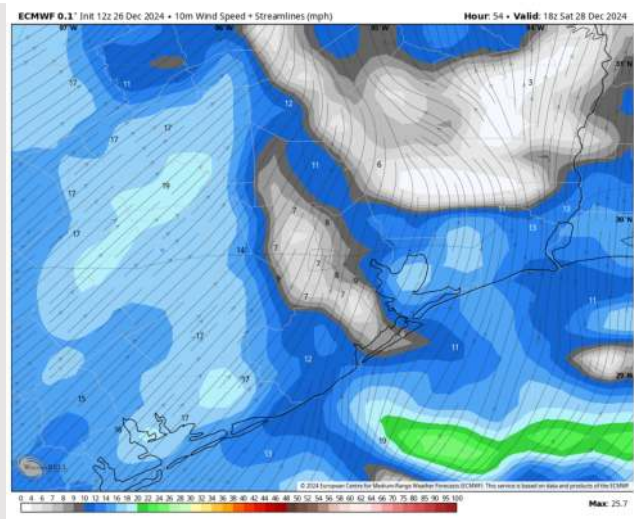
**High Temps:** **N of Morgan's Point:** Upper 70s F. **S of Morgan's Point:** Lower 70s F.

**Visibility:** Visibility may be reduced under downpours Saturday AM. No fog concerns favored for Saturday PM at this time.

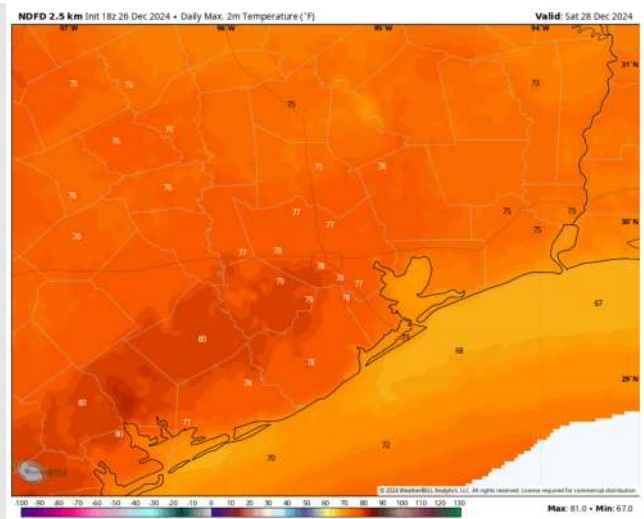
## Precip Image: 9 AM CT



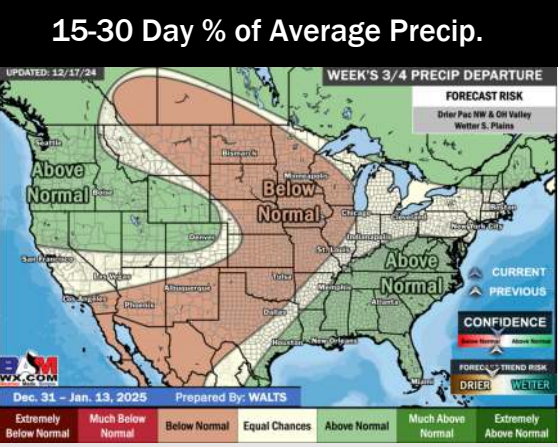
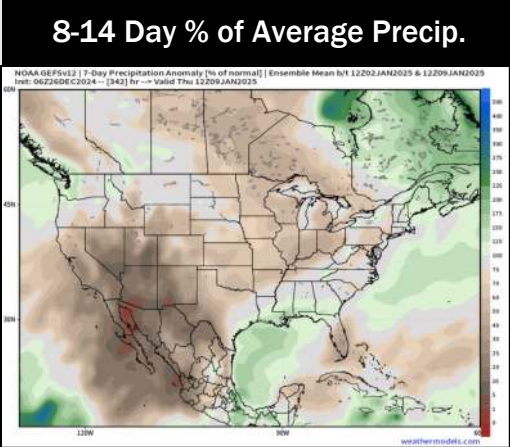
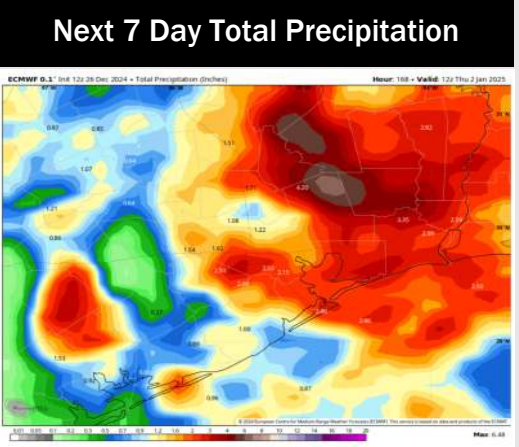
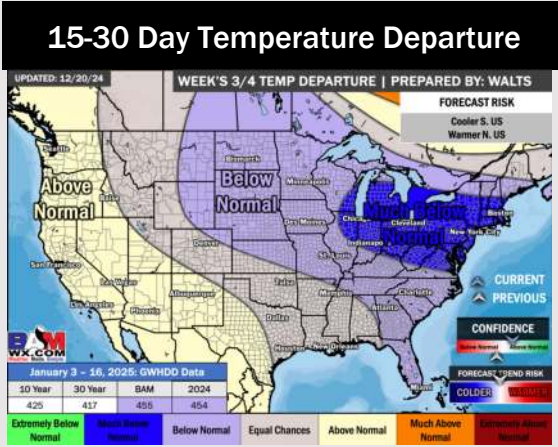
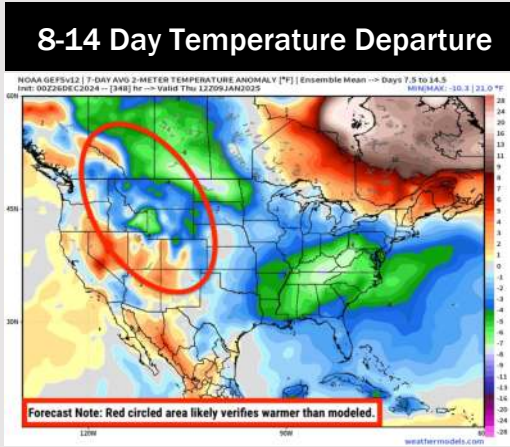
Wind Speed:  
12 PM CT



High Temps  
Saturday



# Houston Pilots: 12/26/24



- Temps are expected to be much above normal for the week 1 timeframe. Rain chances continue through the weekend with rain tapering off by next week.
- Slightly below normal temperatures and near normal rainfall are expected for week 2.
- Near normal temperatures and above normal precipitation chances are expected for the weeks 3/4 timeframe.