

# Houston Pilots Forecast Package



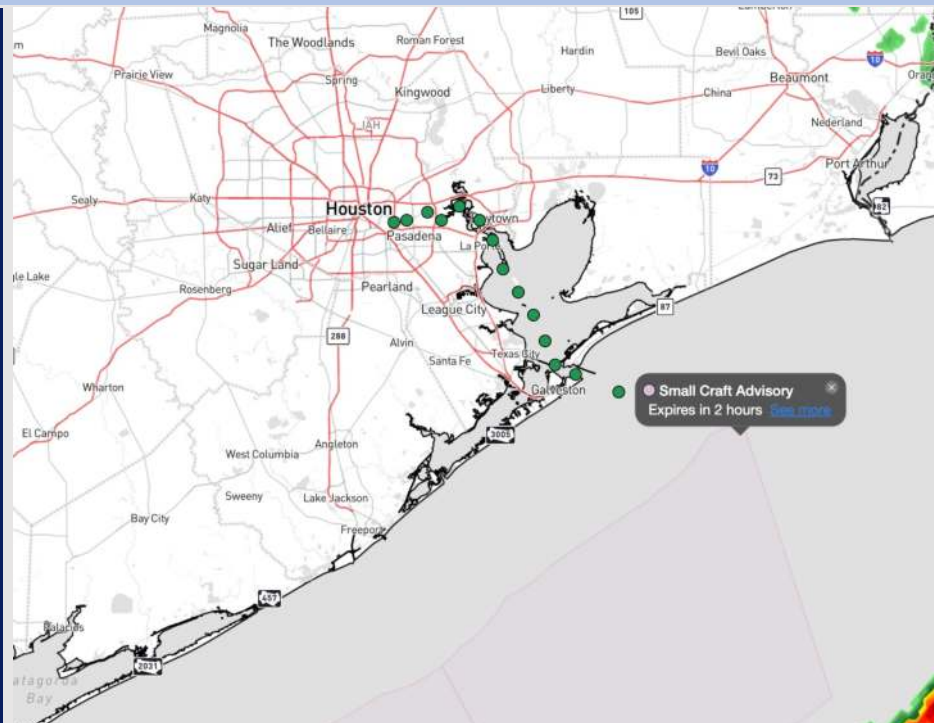
Updated: 1:45 AM CT

Thursday, December 5, 2024

Forecaster: John Kemper

## Weather Headlines

- Wave heights will start to decrease after 8AM THU. **See wave heights slide below!**
- Wind gusts of 25-30 kts will continue to be a risk for today.
- **NO LONGER** favoring Patchy Fog Risks, with only localized drizzle concerns for the AM.

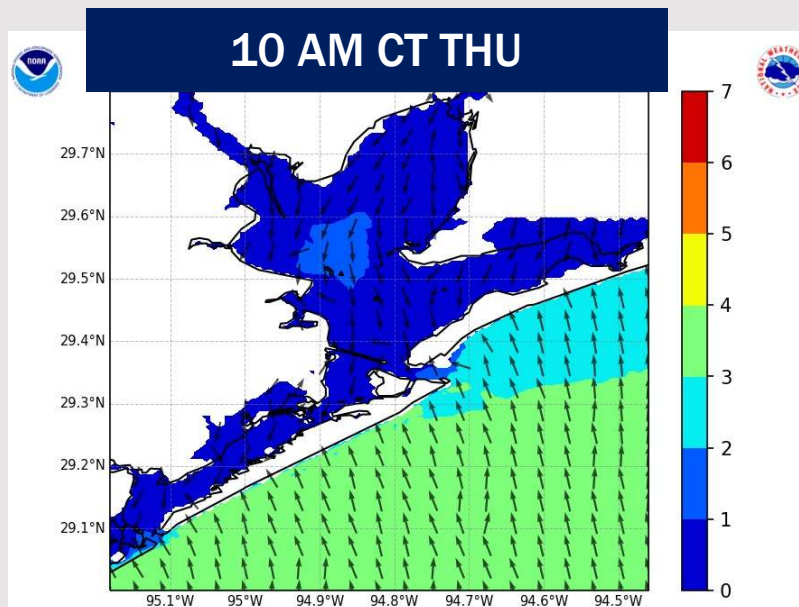
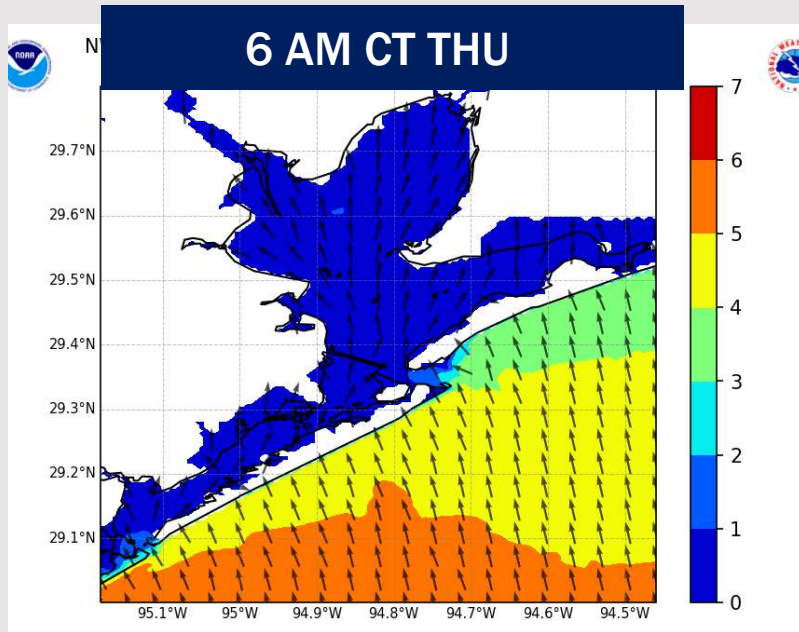


Current Radar: 1:35 PM CT



As always, please do not hesitate to reach out to us with any forecast questions via the chat option on Clarity or our on-call number, **(317)-560-8122** press **1** for forecast questions.

# Wave Height Forecast Update



Wave heights are anticipated to remain at 4' – 5' for the Boarding Station through 8AM THU.

Beyond 8AM THU, wave heights will gradually decrease back towards 3' – 4', remaining there through Friday AM.

Watching for max wave heights to return to 4' – 5' for the Boarding Station for Friday PM.

# Houston Pilots Extended Range Visibility Report



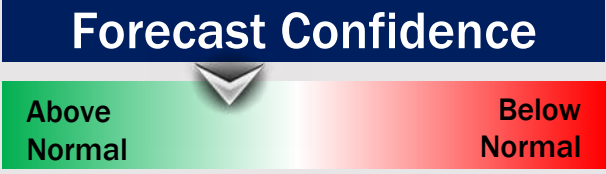
## Sunday 12/8/24

Fog not favored for SUN.



## Monday 12/9/24

Fog not favored for MON.



## Tuesday 12/10/24

Fog not favored for TUE.



## Chance for Fog

Sunday AM	Unlikely
Sunday PM	Unlikely
Monday AM	Unlikely
Monday PM	Unlikely
Tuesday AM	Unlikely
Tuesday PM	Unlikely

# Houston Pilots Visibility Chart (miles)



## Forecast Confidence



Visibility	Thu 3 am	Thu 4 am	Thu 5 am	Thu 6 am	Thu 7 am	Thu 8 am	Thu 9 am	Thu 10 am	Thu 11 am	Thu 12 pm	Thu 1 pm	Thu 2 pm	Thu 3 pm	Thu 4 pm	Thu 5 pm	Thu 6 pm	Thu 7 pm	Thu 8 pm	Thu 9 pm	Thu 10 pm	Thu 11 pm	Fri 12 am	Fri 1 am	Fri 2 am
Houston Pilots N - 610 Bridge	3.9	3.9	3.9	3.9	3.9	3.9	2.9	3.9	3.9	4.9	5.9	6.9	7.9	10	10	10	10	10	10	10	10	10	10	10
Houston Pilots M - Kinder 1	3.9	3.9	4.9	3.9	3.9	3.9	2.9	3.9	4.9	4.9	5.9	6.9	7.9	10	10	10	10	10	10	10	10	10	10	10
Houston Pilots L - Greens Bayou	4.9	4.9	4.9	3.9	3.9	3.9	2.9	3.9	4.9	4.9	5.9	6.9	7.9	10	10	10	10	10	10	10	10	10	10	10
Houston Pilots K - Shell Crude	4.9	4.9	4.9	3.9	3.9	3.9	3.9	3.9	4.9	4.9	5.9	6.9	7.9	10	10	10	10	10	10	10	10	10	10	10
Houston Pilots J - Lynchburg Ferries	4.9	4.9	4.9	3.9	3.9	3.9	2.9	3.9	4.9	4.9	5.9	6.9	7.9	10	10	10	10	10	10	10	10	10	10	10
Houston Pilots I - Exxon 3	4.9	4.9	4.9	3.9	3.9	3.9	3.9	3.9	4.9	4.9	5.9	6.9	7.9	10	10	10	10	10	10	10	10	10	10	10
Houston Pilots H - Morgans Point	4.9	4.9	4.9	3.9	4.9	3.9	2.9	3.9	4.9	4.9	5.9	6.9	7.9	10	10	10	10	10	10	10	10	10	10	10
Houston Pilots G - 75/76	4.9	4.9	4.9	4.9	4.9	3.9	2.9	3.9	3.9	3.9	3.9	4.9	5.9	6.9	9	10	10	10	10	10	10	10	10	10
Houston Pilots F - 63/64	4.9	4.9	4.9	4.9	4.9	3.9	2.9	3.9	3.9	3.9	3.9	4.9	5.9	6.9	9	10	10	10	10	10	10	10	10	10
Houston Pilots E - 51/52	4.9	4.9	4.9	4.9	4.9	3.9	2.9	3.9	3.9	3.9	3.9	4.9	5.9	6.9	6.9	9	10	10	10	10	10	10	10	10
Houston Pilots D - 37/38	4.9	4.9	4.9	4.9	4.9	3.9	2.9	3.9	3.9	3.9	3.9	4.9	5.9	6.9	6.9	9	10	10	10	10	10	10	10	10
Houston Pilots C - 25/26	4.9	4.9	4.9	4.9	4.9	3.9	2.9	3.9	3.9	3.9	3.9	4.9	5.9	6.9	6.9	9	10	10	10	10	10	10	10	10
Houston Pilots B - 11/12	4.9	4.9	4.9	4.9	4.9	3.9	3.9	3.9	3.9	3.9	3.9	4.9	4.9	5.9	6.9	6.9	10	10	10	10	10	10	10	10
Houston Pilots A - 1 & 2 Bravo	4.9	4.9	4.9	4.9	4.9	3.9	2.9	3.9	3.9	3.9	3.9	4.9	4.9	4.9	5.9	5.9	6.9	6.9	6.9	6.9	6.9	8	10	10

**NOTE: This is automated data that may/may not agree with the official BAM thinking that's found on the daily slides or special visibility report slides. This data should be used as a guide only**



# Houston Pilots Wind Chart



**Forecast Confidence**

Above Normal Below Normal

Sustained wind 10 Knots

Gusts 15 Knots

Wind from the SE

**Example**

10

15

↙

Wind	Thu 3 am	Thu 4 am	Thu 5 am	Thu 6 am	Thu 7 am	Thu 8 am	Thu 9 am	Thu 10 am	Thu 11 am	Thu 12 pm	Thu 1 pm	Thu 2 pm	Thu 3 pm	Thu 4 pm	Thu 5 pm	Thu 6 pm	Thu 7 pm	Thu 8 pm	Thu 9 pm	Thu 10 pm	Thu 11 pm	Fri 12 am	Fri 1 am	Fri 2 am	
Houston Pilots N - 610 Bridge	3 8 ↓	5 10 ↓	6 12 ↓	6 13 ↓	7 14 ↓	8 16 ↓	8 17 ↓	9 18 ↓	10 20 ↓	10 21 ↓	10 22 ↓	10 23 ↓	10 23 ↓	12 23 ↓	12 22 ↓	10 21 ↓	10 21 ↓	10 22 ↓	10 22 ↓	12 22 ↓	12 22 ↓	10 21 ↓	10 20 ↓	10 20 ↓	
Houston Pilots M - Kinder 1	3 8 ↓	5 10 ↓	6 12 ↓	6 13 ↓	7 14 ↓	8 16 ↓	8 17 ↓	9 18 ↓	10 20 ↓	10 21 ↓	10 22 ↓	10 23 ↓	10 23 ↓	12 23 ↓	10 22 ↓	10 21 ↓	10 21 ↓	12 22 ↓	12 22 ↓	12 22 ↓	12 22 ↓	10 21 ↓	10 21 ↓	10 21 ↓	
Houston Pilots L - Greens Bayou	3 8 ↓	5 10 ↓	6 12 ↓	6 13 ↓	7 15 ↓	8 17 ↓	8 17 ↓	9 18 ↓	10 20 ↓	10 21 ↓	10 22 ↓	12 23 ↓	12 23 ↓	12 23 ↓	12 22 ↓	12 21 ↓	10 21 ↓	10 21 ↓	10 21 ↓	12 22 ↓	12 22 ↓	12 22 ↓	10 21 ↓	10 21 ↓	10 21 ↓
Houston Pilots K - Shell Crude	3 8 ↓	5 10 ↓	6 12 ↓	6 13 ↓	7 15 ↓	8 16 ↓	8 17 ↓	9 18 ↓	10 20 ↓	10 21 ↓	10 22 ↓	12 23 ↓	12 23 ↓	12 23 ↓	12 22 ↓	12 21 ↓	10 21 ↓	10 21 ↓	10 22 ↓	12 22 ↓	12 23 ↓	12 22 ↓	10 21 ↓	10 21 ↓	10 21 ↓
Houston Pilots J - Lynchburg Ferries	3 8 ↓	5 9 ↓	6 12 ↓	6 13 ↓	7 15 ↓	8 17 ↓	8 17 ↓	9 18 ↓	10 20 ↓	12 21 ↓	12 22 ↓	12 23 ↓	12 23 ↓	12 23 ↓	12 22 ↓	12 22 ↓	10 21 ↓	10 21 ↓	10 22 ↓	10 22 ↓	12 23 ↓	12 22 ↓	10 21 ↓	10 21 ↓	10 21 ↓
Houston Pilots I - Exxon 3	7 10 ↓	8 12 ↓	8 13 ↓	9 14 ↓	10 16 ↓	12 17 ↓	12 17 ↓	13 18 ↓	13 20 ↓	13 21 ↓	13 22 ↓	13 23 ↓	14 23 ↓	14 23 ↓	15 23 ↓	15 22 ↓	15 22 ↓	14 22 ↓	15 22 ↓	16 23 ↓	17 23 ↓	17 24 ↓	17 23 ↓	16 23 ↓	17 23 ↓
Houston Pilots H - Morgans Point	7 9 ↓	8 12 ↓	8 13 ↓	9 14 ↓	10 15 ↓	10 17 ↓	12 17 ↓	12 18 ↓	13 20 ↓	13 21 ↓	13 22 ↓	14 23 ↓	14 23 ↓	14 23 ↓	15 23 ↓	15 22 ↓	15 22 ↓	15 22 ↓	15 24 ↓	16 24 ↓	17 24 ↓	17 24 ↓	17 24 ↓	17 23 ↓	17 23 ↓
Houston Pilots G - 75/76	8 12 ↓	8 13 ↓	9 14 ↓	10 15 ↓	12 16 ↓	13 17 ↓	13 18 ↓	13 21 ↓	14 22 ↓	14 23 ↓	14 22 ↓	15 24 ↓	15 24 ↓	15 24 ↓	16 25 ↓	17 25 ↓	16 24 ↓	17 24 ↓	18 26 ↓	20 26 ↓	20 26 ↓	20 26 ↓	20 26 ↓	20 26 ↓	20 26 ↓
Houston Pilots F - 63/64	8 10 ↓	8 12 ↓	9 14 ↓	10 15 ↓	10 16 ↓	13 17 ↓	13 18 ↓	14 21 ↓	14 22 ↓	14 23 ↓	14 22 ↓	15 24 ↓	15 24 ↓	15 24 ↓	17 26 ↓	17 25 ↓	17 24 ↓	17 25 ↓	18 26 ↓	20 28 ↓	20 28 ↓	20 28 ↓	21 28 ↓	20 28 ↓	21 28 ↓
Houston Pilots E - 51/52	7 10 ↓	8 12 ↓	8 13 ↓	9 14 ↓	10 16 ↓	12 17 ↓	13 18 ↓	13 21 ↓	14 22 ↓	14 23 ↓	15 23 ↓	15 24 ↓	16 24 ↓	16 24 ↓	17 25 ↓	17 25 ↓	17 26 ↓	18 26 ↓	20 28 ↓	20 28 ↓	20 28 ↓	21 28 ↓	21 28 ↓	20 28 ↓	21 28 ↓
Houston Pilots D - 37/38	7 10 ↓	8 12 ↓	8 13 ↓	9 14 ↓	10 16 ↓	12 17 ↓	13 18 ↓	13 21 ↓	14 22 ↓	15 23 ↓	15 23 ↓	15 24 ↓	16 24 ↓	17 25 ↓	17 26 ↓	17 26 ↓	17 26 ↓	18 26 ↓	20 28 ↓	20 29 ↓	21 29 ↓	21 28 ↓	21 28 ↓	21 28 ↓	21 29 ↓
Houston Pilots C - 25/26	7 10 ↓	8 12 ↓	8 13 ↓	9 14 ↓	10 16 ↓	12 17 ↓	13 18 ↓	13 20 ↓	14 22 ↓	15 23 ↓	15 23 ↓	16 24 ↓	17 25 ↓	17 25 ↓	17 26 ↓	17 26 ↓	17 26 ↓	18 28 ↓	20 29 ↓	20 29 ↓	20 29 ↓	20 29 ↓	20 29 ↓	20 29 ↓	21 29 ↓
Houston Pilots B - 11/12	6 10 ↓	7 12 ↓	8 13 ↓	8 14 ↓	9 15 ↓	10 17 ↓	12 17 ↓	13 20 ↓	14 21 ↓	15 23 ↓	15 23 ↓	15 24 ↓	16 24 ↓	16 24 ↓	16 25 ↓	17 25 ↓	17 26 ↓	17 26 ↓	18 28 ↓	18 29 ↓	18 29 ↓	20 29 ↓	20 29 ↓	18 28 ↓	20 29 ↓
Houston Pilots A - 1 & 2 Bravo	8 13 ↓	8 13 ↓	9 14 ↓	10 15 ↓	10 16 ↓	12 17 ↓	13 18 ↓	14 21 ↓	14 23 ↓	16 24 ↓	16 24 ↓	17 25 ↓	17 26 ↓	18 28 ↓	20 28 ↓	20 28 ↓	20 29 ↓	21 29 ↓	22 30 ↓	22 30 ↓	22 31 ↓	22 31 ↓	22 31 ↓	22 31 ↓	23 31 ↓

**NOTE: This is automated data that may/may not agree with the official BAM thinking that's found on the daily slides. This data should be used as a guide only.**

## Forecast Discussion

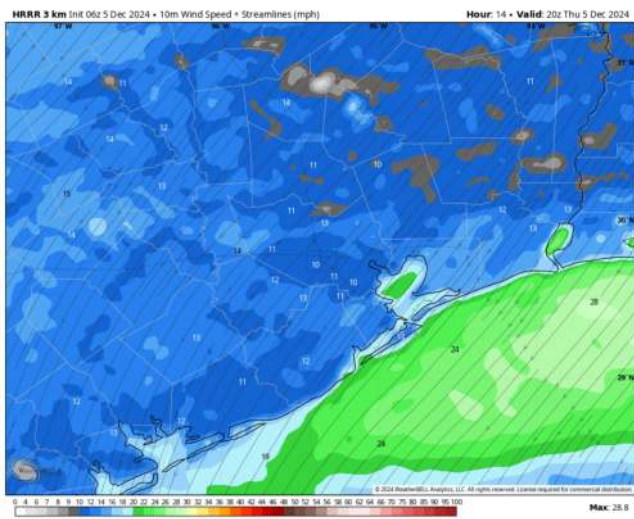
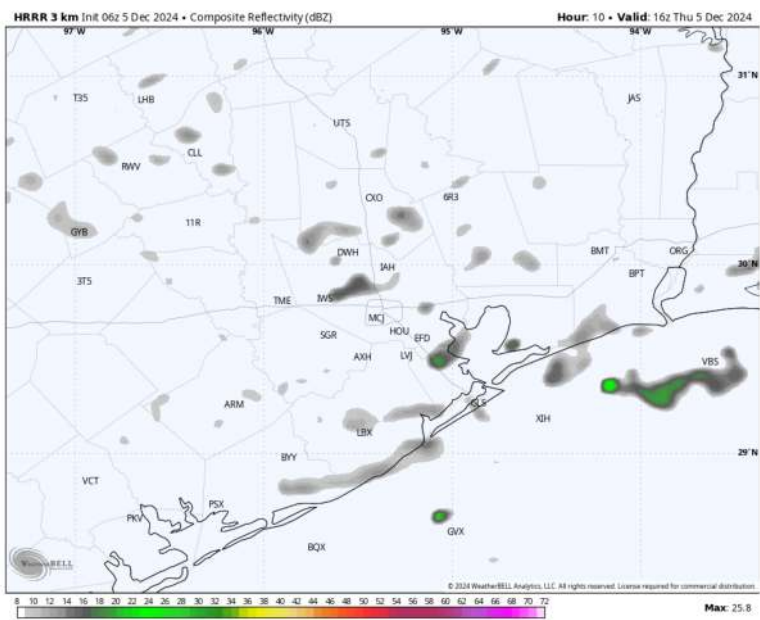
**Precip:** Drizzle / isolated light showers will be in play through at least 10AM.

**Wind:** Winds will be out of the N/NE throughout the day. **N of Morgan's Point:** Winds will be at 3 – 8 kts through 7 AM, increasing slightly to 5 – 10 kts after that time. **S of Morgan's Point:** Winds at 4 – 9 kts through 7 AM, increasing to 16 – 22 kts after that time and remaining there for the rest of today. **Wind gusts of 25 – 30 kts in play for all Stations after 9AM.**

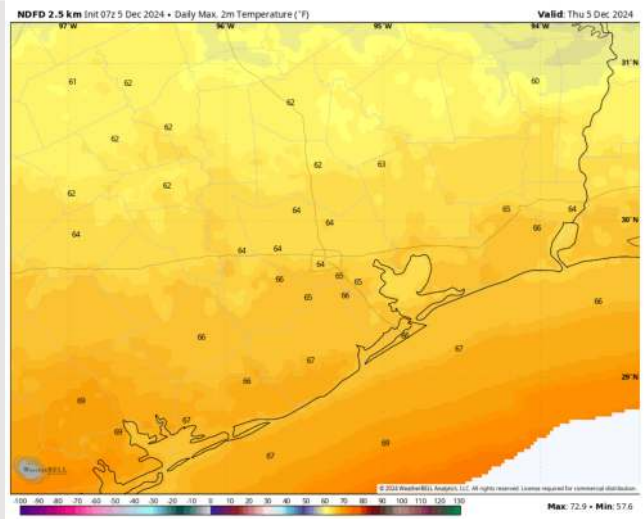
**High Temps:** **N of Morgan's Point:** Mid 60s F. **S of Morgan's Point:** Mid to Upper 60s F.

**Visibility:** Visibilities of 3 – 5 miles can't be ruled out due to drizzle, but at this time we are favoring all patchy fog risks to remain N of Stations.

## Precip Image: 10 AM CT



Wind Speed:  
2 PM CT



High Temps  
Today



# Houston Pilots: FRI. 12/6/2024



## Forecast Discussion

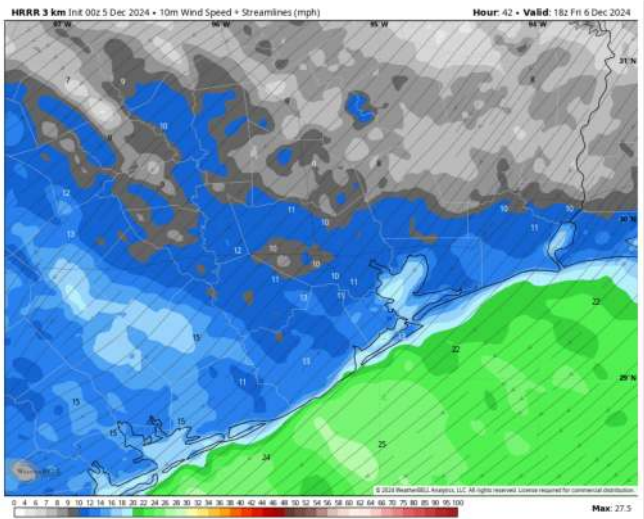
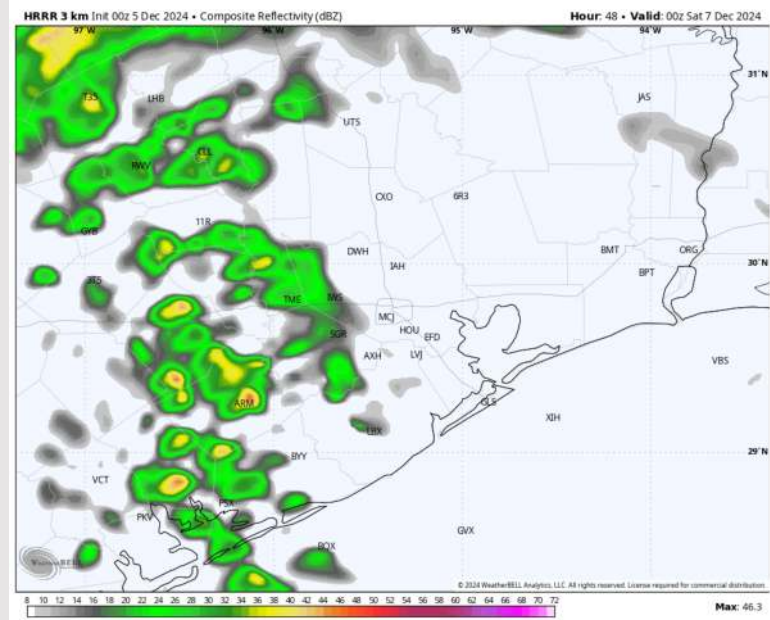
**Precip:** Scattered showers and storms (20-30%) will work into the area as early as 7PM, continuing for the rest of Friday evening.

**Wind:** Winds will be out of the NE for all of Friday. **N of Morgan's Point:** Winds will be at 4 – 8 kts for all of Friday. **S of Morgan's Point:** Winds will be at 18 – 23 kts through 4PM, decreasing slightly to 12 – 18 kts for the rest of Friday. **Wind gusts of 20 – 25 kts in play for all Stations from 12AM to 3PM. Wind gusts may reach 30 kts at the Boarding Station during this timeframe as well.**

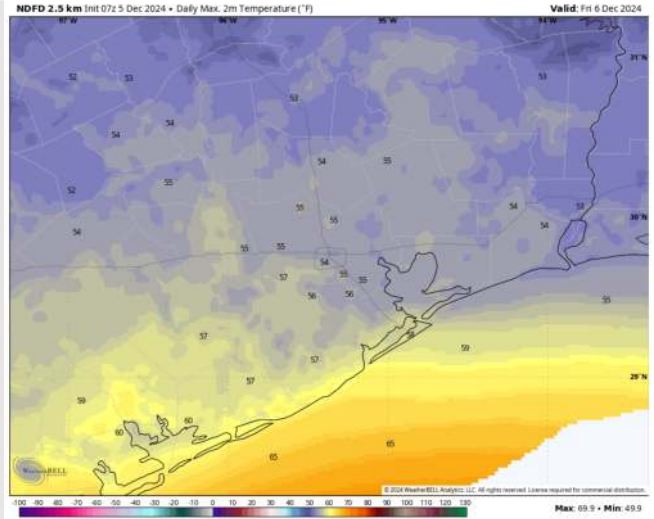
**High Temps:** **N of Morgan's Point:** Lower to mid 50s F. **S of Morgan's Point:** Upper 50s F.

**Visibility:** No visibility concerns for Friday.

## Precip Image: 6 PM CT



Wind Speed  
12 PM CT



High Temps  
Friday

## Forecast Discussion

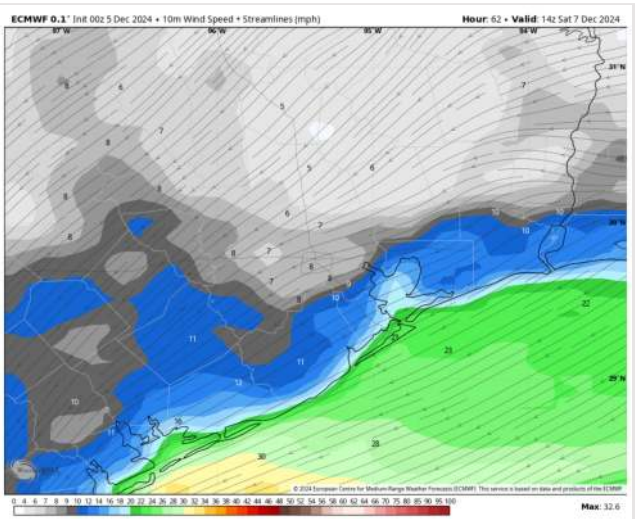
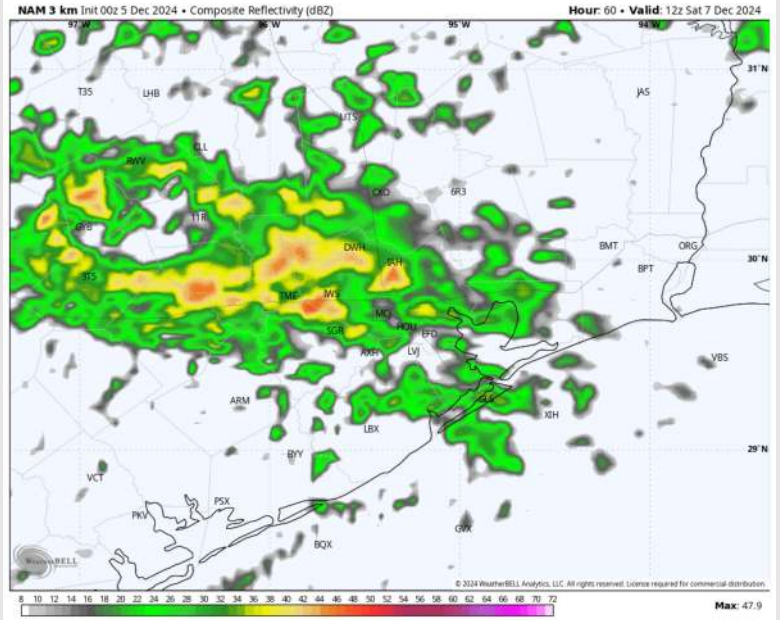
**Precip:** Scattered to widespread showers will continue after midnight through at least 10AM. Lower confidence if showers and storms can extend beyond this point.

**Wind:** Winds will be out of the ENE through Saturday. **N of Morgan's Point:** Winds will be at 3 - 8 kts throughout the entire day. **S of Morgan's Point:** Winds will be at 15-20kts through 8 PM before decreasing to 7 - 14 kts after that time. **Wind gusts of 20 - 25 kts in play for Stations S of Morgan's Point through 7 PM.**

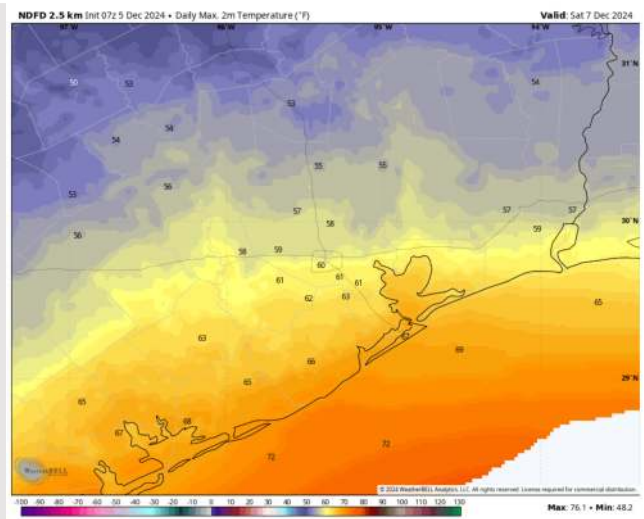
**High Temps:** **N of Morgan's Point:** Lower 60s F. **S of Morgan's Point:** High 60s F.

**Visibility:** No fog concerns for Saturday.

## Precip Image: 6 AM CT



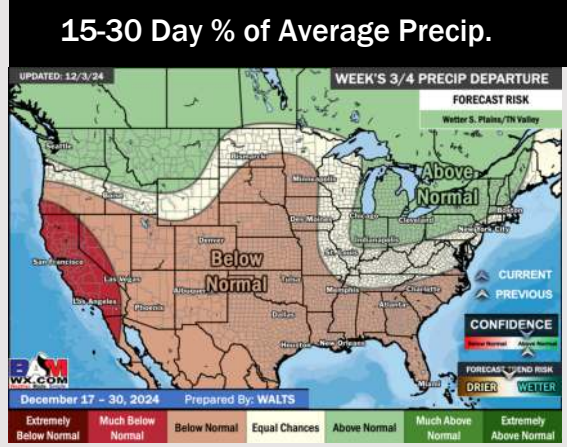
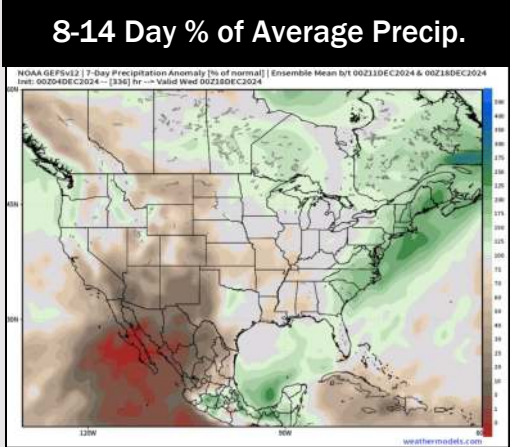
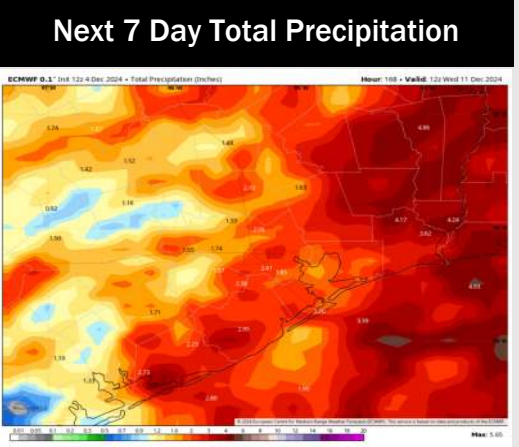
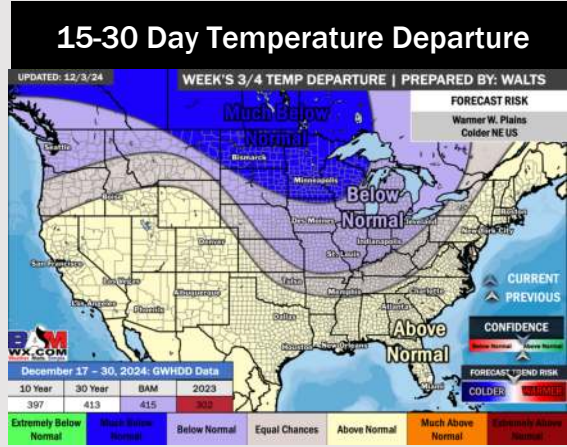
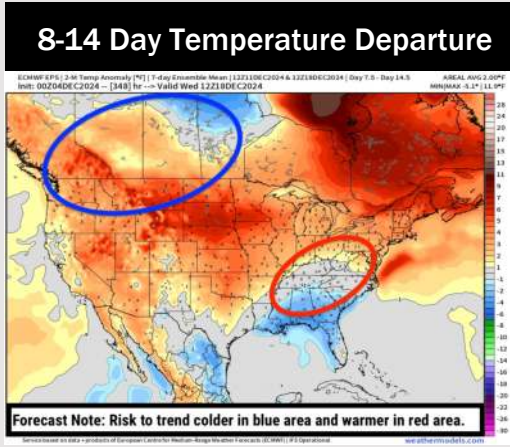
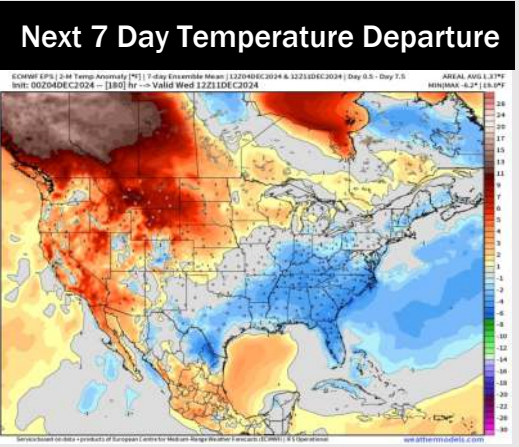
Wind Speed:  
8 AM CT



High Temps  
Saturday



# Houston Pilots: 12/5/24



- Temps are expected to be around normal for the week 1 timeframe. Above normal rainfall is expected through the week 1 timeframe with several rounds of rain in the picture.
- Near normal temperatures are favored for week 2. Favoring near normal rainfall week 2.
- Above normal temperatures and below normal precipitation chances are expected for the weeks 3/4 timeframe.