

# Houston Pilots Forecast Package



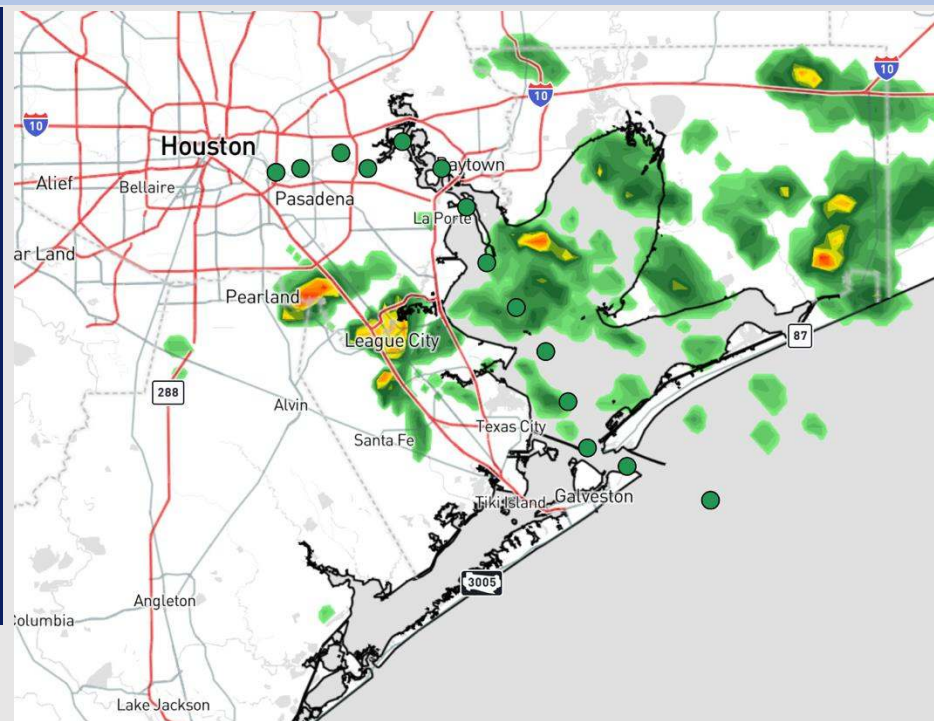
Updated: 1:00 PM CT

Wednesday, December 25, 2024

Forecaster: Hope Kleitsch

## Weather Headlines

- Scattered showers continue through the rest of today, becoming more widespread by THU afternoon.
- Wind gusts in storms THU may reach 30 – 35 kts.
- **Watching for sea fog risks THU AM. See visibility slide below!**



**Current Radar: 12:50 PM CT**

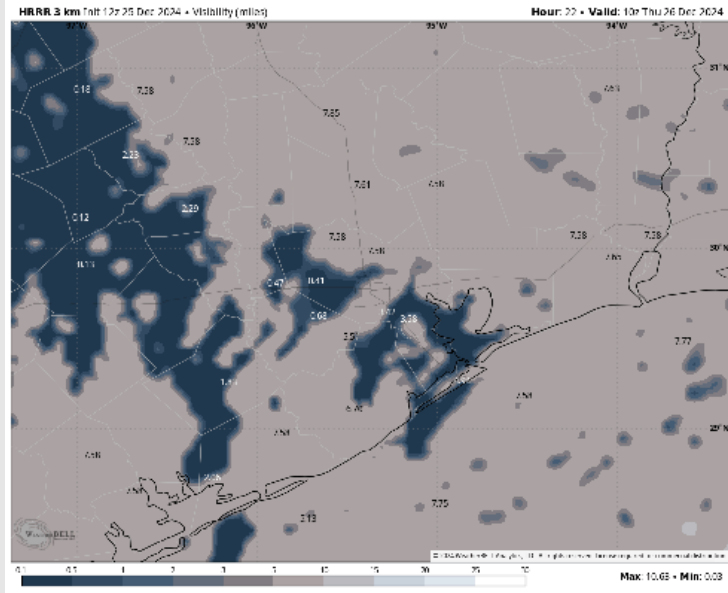
As always, please do not hesitate to reach out to us with any forecast questions at **(317)-560-8122**. Press 1 for forecast questions.

You can also access real-time forecast updates and 24/7 meteorological chat assistance on your [Clarity](#) app. Click [here](#) for login assistance.

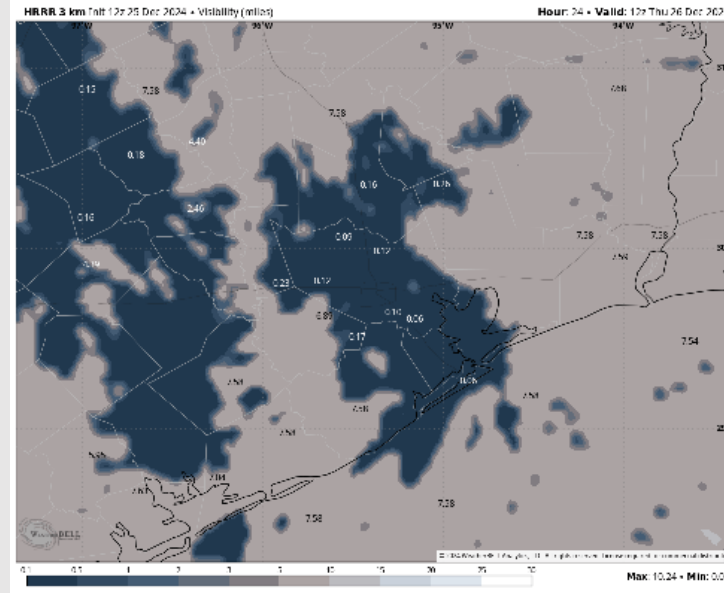


# Houston Pilots Visibility Report

## 4 AM CST THU VISIBILITY



## 6 AM CST THU VISIBILITY



## Confidence

Above  
Normal

Below  
Normal

## TIMEFRAME DISCUSSED

6AM to 1 PM THU

## THREAT

Low-Med

- Isolated sea fog will be possible for all Stations as southeasterly winds briefly strengthen for the Thursday AM hours – early Thursday afternoon. Confidence is low on exact timing.
- The greatest timeframe of risk is going to be between 5 – 10 AM Thursday. Isolated sea fog risks will also be accompanied by downpours, making this a lower threat overall.
- Any fog that develops should exit by 1PM THU at the latest for all stations.

# Houston Pilots Extended Range Visibility Report



## Saturday 12/28/24

Visibility may be reduced to 2-4 miles under downpours Saturday AM. Monitoring sea fog risks for Stations S of 63/64 Saturday evening.

### Forecast Confidence



## Monday 12/30/24

Monitoring for a low end, isolated sea fog risk for Monday AM. Confidence is low.

### Forecast Confidence



## Sunday 12/29/24

Fog is not favored to continue into Sunday AM, however we will continue to monitor trends.

### Forecast Confidence



## Chance for Fog

Saturday AM	Unlikely
Saturday PM	Medium
Sunday AM	Unlikely
Sunday PM	Unlikely
Monday AM	Low
Monday PM	Unlikely

# Houston Pilots Visibility Chart (miles)



Visibility	Wed 2 pm	Wed 3 pm	Wed 4 pm	Wed 5 pm	Wed 6 pm	Wed 7 pm	Wed 8 pm	Wed 9 pm	Wed 10 pm	Wed 11 pm	Thu 12 am	Thu 1 am	Thu 2 am	Thu 3 am	Thu 4 am	Thu 5 am	Thu 6 am	Thu 7 am	Thu 8 am	Thu 9 am	Thu 10 am	Thu 11 am	Thu 12 pm	Thu 1 pm
Houston Pilots N - 610 Bridge	10	10	10	10	10	10	10	9	9	6.9	6.9	6.9	0.5	1.1	0.8	0.8	0.5	0.5	0.5	0.5	2.5	3.9	4.9	5.9
Houston Pilots M - Kinder 1	10	10	10	10	10	10	10	9	9	6.9	6.9	6.9	2	1.1	0.8	0.8	0.5	0.5	0.5	0.5	2.5	3.9	4.9	5.9
Houston Pilots L - Greens Bayou	10	10	10	10	10	10	10	9	9	6.9	6.9	6.9	2	1.1	0.8	0.8	0.5	0.5	0.5	0.5	2.9	3.9	4.9	5.9
Houston Pilots K - Shell Crude	10	10	10	10	10	10	10	9	9	7.9	6.9	6.9	2	1.1	0.8	0.8	0.5	0.5	0.5	0.5	2.9	3.9	4.9	5.9
Houston Pilots J - Lynchburg Ferries	10	10	10	10	10	10	10	9	9	6.9	6.9	6.9	4.9	3.9	2.9	2.9	2.9	2.9	1.6	1.6	2.9	3.9	4.9	5.9
Houston Pilots I - Exxon 3	10	10	10	10	10	10	10	9	9	7.9	6.9	6.9	4.9	3.9	2.9	2.9	2.9	2.9	1.6	1.6	3.9	4.9	4.9	5.9
Houston Pilots H - Morgans Point	10	10	10	10	10	10	10	9	9	6.9	6.9	6.9	4.9	3.9	2.9	2.9	2.9	2.9	1.6	1.6	3.9	4.9	4.9	5.9
Houston Pilots G - 75/76	10	10	10	10	10	10	10	9	6.9	6.9	6.9	4.9	2.9	2	1.6	1.6	1.6	1.6	2	2	2.9	4.9	4.9	0.1
Houston Pilots F - 63/64	10	10	10	10	10	10	10	9	6.9	6.9	6.9	4.9	2.9	2	1.6	1.6	1.6	2	2	2	2.9	4.9	4.9	0.1
Houston Pilots E - 51/52	10	10	10	10	10	10	10	9	6.9	6.9	6.9	3.9	2.9	2	2	2	2	2.5	2	2	3.9	4.9	4.9	0.3
Houston Pilots D - 37/38	10	10	10	10	10	10	10	9	6.9	6.9	6.9	3.9	4.9	3.9	3.9	3.9	4.9	4.9	3.9	2.9	4.9	4.9	5.9	0.3
Houston Pilots C - 25/26	10	10	10	10	10	10	10	9	6.9	6.9	6.9	3.9	5.9	4.9	4.9	4.9	4.9	4.9	3.9	3.9	4.9	4.9	5.9	0.1
Houston Pilots B - 11/12	10	10	10	10	10	10	10	9	7.9	6.9	6.9	5.9	5.9	4.9	4.9	4.9	4.9	4.9	4.9	3.9	4.9	5.9	5.9	0.1
Houston Pilots A - 1 & 2 Bravo	10	10	10	10	10	10	10	9	7.9	6.9	6.9	6.9	5.9	5.9	5.9	5.9	5.9	6.9	5.9	4.9	5.9	6.9	6.9	0.1

NOTE: This is automated data that may/may not agree with the official BAM thinking that's found on the daily slides or special visibility report slides. This data should be used as a guide only



# Houston Pilots Wind Chart



## Forecast Confidence

Above  
Normal



Below  
Normal

Sustained wind 10 Knots  
  
Gusts 15 Knots  
  
Wind from the SE

Example

10  
15  
↙

Wind	Wed 2 pm	Wed 3 pm	Wed 4 pm	Wed 5 pm	Wed 6 pm	Wed 7 pm	Wed 8 pm	Wed 9 pm	Wed 10 pm	Wed 11 pm	Thu 12 am	Thu 1 am	Thu 2 am	Thu 3 am	Thu 4 am	Thu 5 am	Thu 6 am	Thu 7 am	Thu 8 am	Thu 9 am	Thu 10 am	Thu 11 am	Thu 12 pm	Thu 1 pm
Houston Pilots N - 610 Bridge	6 10 ↖	5 10 ↖	5 10 ↖	5 9 ↖	3 8 ↖	3 7 ↖	3 7 ↖	2 6 ↖	2 6 ↖	2 6 ↖	3 7 ↖	3 7 ↖	3 7 ↖	3 7 ↖	3 7 ↖	3 7 ↖	3 8 ↖	3 8 ↖	5 10 ↖	6 10 ↖	6 13 ↖	7 15 ↖	8 17 ↖	9 20 ↑
Houston Pilots M - Kinder 1	6 12 ↖	5 10 ↖	5 10 ↖	5 9 ↖	3 8 ↖	3 7 ↖	3 7 ↖	2 6 ↖	2 6 ↖	2 6 ↖	3 7 ↖	3 7 ↖	3 7 ↖	3 7 ↖	3 7 ↖	3 7 ↖	3 8 ↖	3 9 ↖	5 10 ↖	6 10 ↖	6 13 ↖	7 15 ↖	8 17 ↖	9 20 ↑
Houston Pilots L - Greens Bayou	6 12 ↖	6 10 ↖	6 10 ↖	5 9 ↖	5 8 ↖	3 7 ↖	3 7 ↖	3 6 ↖	3 6 ↖	3 6 ↖	3 7 ↖	3 7 ↖	3 7 ↖	3 7 ↖	3 7 ↖	3 8 ↖	3 8 ↖	3 9 ↖	5 10 ↖	6 12 ↖	6 13 ↖	7 15 ↖	8 17 ↖	9 20 ↖
Houston Pilots K - Shell Crude	6 12 ↖	6 10 ↖	6 10 ↖	6 9 ↖	5 8 ↖	3 7 ↖	3 7 ↖	3 6 ↖	3 6 ↖	3 6 ↖	3 7 ↖	3 7 ↖	3 7 ↖	3 7 ↖	3 7 ↖	3 8 ↖	3 8 ↖	3 9 ↖	5 10 ↖	6 12 ↖	6 13 ↖	8 15 ↖	8 17 ↖	9 20 ↖
Houston Pilots J - Lynchburg Ferries	6 12 ↖	6 10 ↖	6 10 ↖	5 9 ↖	5 8 ↖	3 7 ↖	3 6 ↖	2 6 ↖	2 6 ↖	2 6 ↖	3 6 ↖	3 7 ↖	3 7 ↖	3 7 ↖	3 7 ↖	3 7 ↖	3 8 ↖	3 9 ↖	5 10 ↖	5 12 ↖	6 13 ↖	8 15 ↖	8 17 ↖	9 18 ↖
Houston Pilots I - Exxon 3	7 13 ↖	7 13 ↖	7 13 ↖	7 10 ↖	6 10 ↖	6 9 ↖	6 8 ↖	5 8 ↖	5 8 ↖	5 8 ↖	6 8 ↖	6 9 ↖	6 8 ↖	6 8 ↖	6 8 ↖	6 9 ↖	6 9 ↖	6 9 ↖	7 10 ↖	7 12 ↖	8 12 ↖	8 14 ↖	9 15 ↖	10 17 ↖
Houston Pilots H - Morgans Point	7 13 ↖	7 13 ↖	7 13 ↖	7 10 ↖	6 9 ↖	6 9 ↖	6 8 ↖	5 8 ↖	5 8 ↖	5 8 ↖	6 8 ↖	6 9 ↖	6 8 ↖	6 8 ↖	6 8 ↖	6 9 ↖	6 9 ↖	6 10 ↖	7 12 ↖	8 13 ↖	8 14 ↖	9 15 ↖	10 17 ↖	10 18 ↖
Houston Pilots G - 75/76	7 13 ↖	7 13 ↖	7 13 ↖	7 12 ↖	6 10 ↖	6 9 ↖	6 9 ↖	6 8 ↖	6 8 ↖	6 8 ↖	6 9 ↖	6 9 ↖	6 9 ↖	6 9 ↖	6 9 ↖	7 10 ↖	7 10 ↖	8 12 ↖	8 13 ↖	8 14 ↖	9 15 ↖	10 17 ↖	10 17 ↖	12 20 ↖
Houston Pilots F - 63/64	7 13 ↖	6 13 ↖	6 13 ↖	6 10 ↖	6 10 ↖	6 9 ↖	6 8 ↖	6 8 ↖	6 8 ↖	6 8 ↖	6 9 ↖	6 9 ↖	6 9 ↖	6 9 ↖	6 9 ↖	7 10 ↖	7 12 ↖	8 12 ↖	8 13 ↖	9 14 ↖	9 15 ↖	10 17 ↖	10 17 ↖	12 20 ↖
Houston Pilots E - 51/52	7 13 ↖	6 12 ↖	6 13 ↖	6 10 ↖	6 9 ↖	6 9 ↖	6 8 ↖	6 8 ↖	6 8 ↖	6 8 ↖	6 9 ↖	6 9 ↖	6 9 ↖	6 9 ↖	6 9 ↖	7 10 ↖	7 12 ↖	8 12 ↖	8 13 ↖	9 14 ↖	9 15 ↖	10 17 ↖	10 17 ↖	12 20 ↖
Houston Pilots D - 37/38	7 13 ↖	6 12 ↖	6 12 ↖	6 10 ↖	6 9 ↖	6 9 ↖	6 8 ↖	6 8 ↖	6 8 ↖	6 8 ↖	6 9 ↖	6 9 ↖	6 9 ↖	6 9 ↖	6 10 ↖	7 10 ↖	7 12 ↖	8 13 ↖	8 13 ↖	9 14 ↖	9 15 ↖	10 17 ↖	10 17 ↖	12 20 ↖
Houston Pilots C - 25/26	8 13 ↖	7 13 ↖	7 12 ↖	6 10 ↖	6 10 ↖	6 9 ↖	6 8 ↖	6 8 ↖	6 8 ↖	6 8 ↖	6 9 ↖	6 9 ↖	6 9 ↖	6 9 ↖	6 10 ↖	7 10 ↖	7 12 ↖	8 13 ↖	8 14 ↖	9 14 ↖	9 16 ↖	10 17 ↖	10 17 ↖	12 20 ↖
Houston Pilots B - 11/12	8 13 ↖	7 12 ↖	7 12 ↖	6 10 ↖	6 10 ↖	6 9 ↖	6 9 ↖	5 8 ↖	5 9 ↖	5 9 ↖	6 9 ↖	6 10 ↖	6 10 ↖	6 10 ↖	6 10 ↖	6 12 ↖	7 12 ↖	8 13 ↖	8 14 ↖	8 14 ↖	9 15 ↖	10 16 ↖	10 17 ↖	12 18 ↖
Houston Pilots A - 1 & 2 Bravo	8 14 ↖	8 13 ↖	7 13 ↖	7 12 ↖	7 10 ↖	7 10 ↖	6 10 ↖	6 10 ↖	7 10 ↖	7 10 ↖	7 12 ↖	8 12 ↖	8 12 ↖	8 12 ↖	8 13 ↖	8 13 ↖	8 14 ↖	9 14 ↖	10 15 ↖	10 16 ↖	10 16 ↖	12 17 ↖	12 18 ↖	13 20 ↖

NOTE: This is automated data that may/may not agree with the official BAM thinking that's found on the daily slides.  
This data should be used as a guide only.

## Forecast Discussion

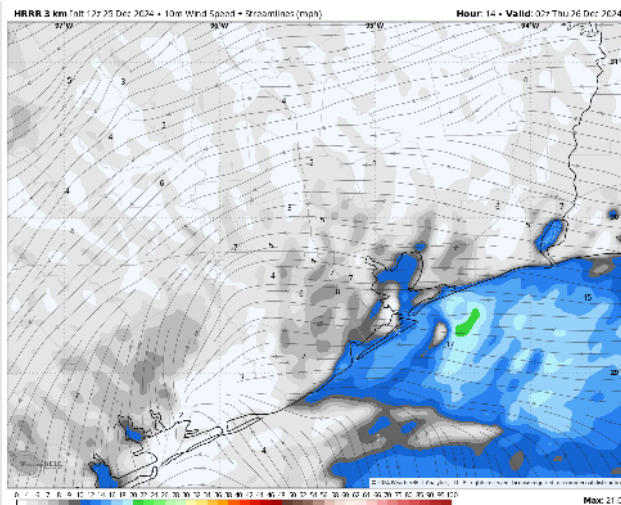
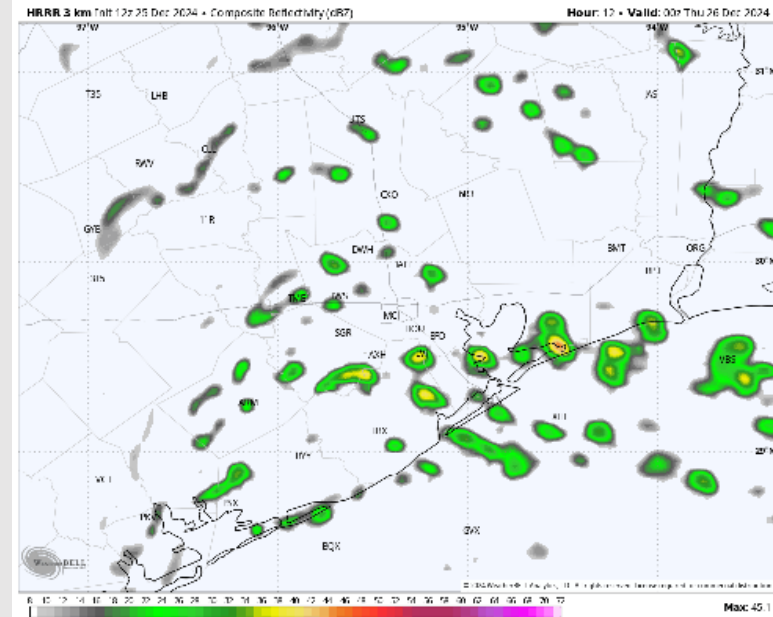
**Precip:** Scattered showers are expected to persist through the remainder of the day.

**Wind:** Winds will be generally out of the SE through the rest of the day. **N of Morgan's Point:** Non-storm winds will be at 3 - 8 kts throughout the day. **S of Morgan's Point:** Winds will be 8 - 13 kts throughout rest of the day.

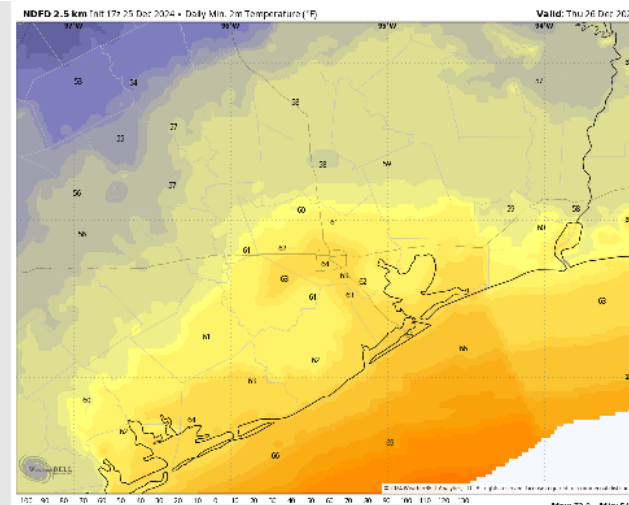
**Low Temps:** **N of Morgan's Point:** Lower 60s F. **S of Morgan's Point:** Mid to lower 60s F.

**Visibility:** Reduced visibility of 2-4 miles will be possible by heavy downpours.

## Precip Image: 6 PM CT



**Wind Speed:**  
28PM CT



**Low Temps**  
**THU AM**

# Houston Pilots: THU. 12/26/2024

## Forecast Discussion

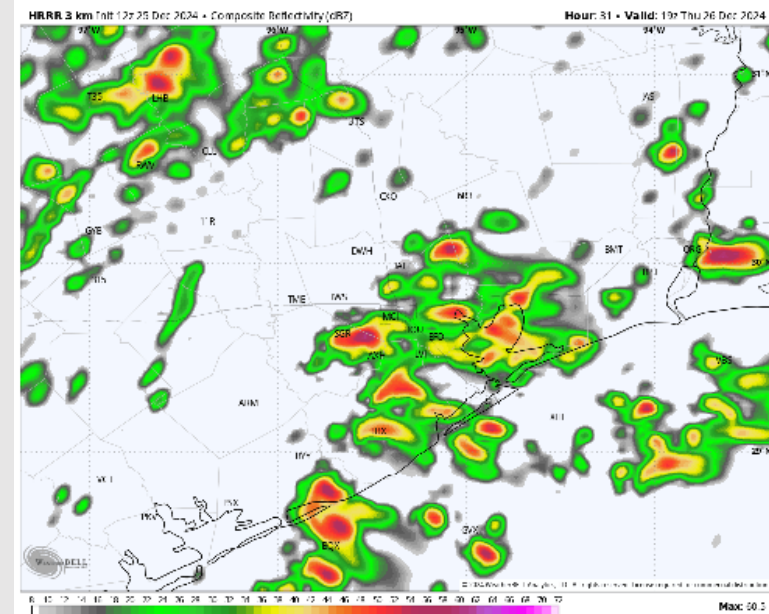
**Precip:** Isolated (20%) showers in play for all Stations between 7 AM and 12 PM before coverage slightly increases and becomes widely scattered (60%) through 10PM. A few strong to severe storms with gusty winds will be possible.

**Wind:** Winds direction will 'wobble' throughout the day, with a general tendency to be out of the S/SE. **N of Morgan's Point:** Winds will be at 4 – 9 kts throughout the day Thursday. **S of Morgan's Point:** Winds will be at 4 – 9 kts through 1 PM, increasing to 8– 13 kts for the rest of the day. **A few stronger gusts of 30 - 40kts + can't be ruled out from storms from 12PM – 6PM.**

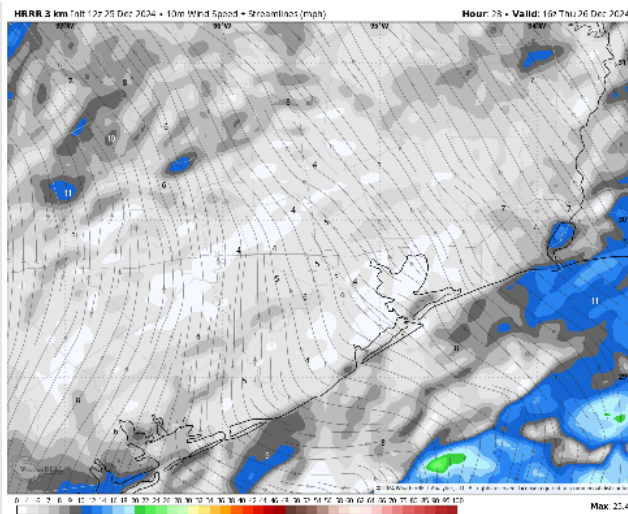
**High Temps:** **N of Morgan's Point:** Mid 70s F. **S of Morgan's Point:** Upper 60s – Near 70 F.

**Visibility:** Risks for sea fog in the AM can't be ruled out, although confidence is lower on timing due to presence of scattered downpours.

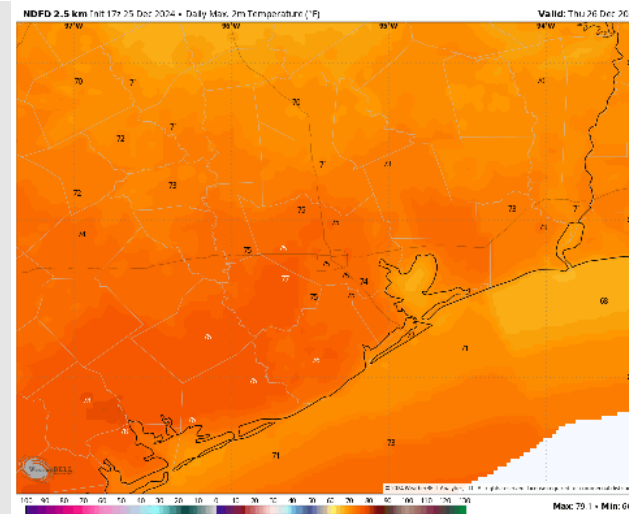
## Precip Image: 1 PM CT



**Wind Speed:**  
10 AM CT



**High Temps**  
Thursday





# Houston Pilots: FRI. 12/27/2024

## Forecast Discussion

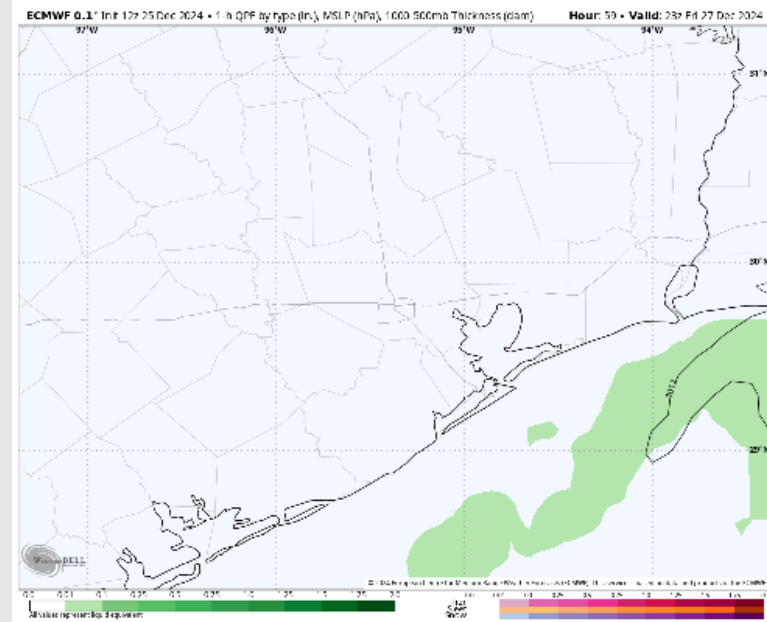
**Precip:** Favoring dry conditions through the day as rain stays off to the east.

**Wind:** Winds will be out of the S/SE throughout the day, becoming variable at times. **N of Morgan's Point:** Winds will be at 2 – 7 kts throughout Friday. **S of Morgan's Point:** Winds will be at 3 – 8 kts, increasing to 5 – 10 kts after 6 PM.

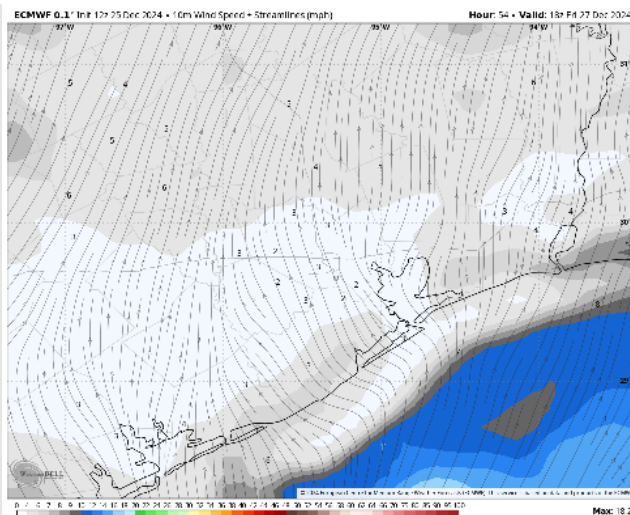
**High Temps:** **N of Morgan's Point:** Mid to upper 70s F. **S of Morgan's Point:** Upper 60s F to near 70 F.

**Visibility:** Patchy sea fog risks will need to be monitored during the AM, although confidence is lower on exact timing due to uncertainty on when the front will pass over all stations.

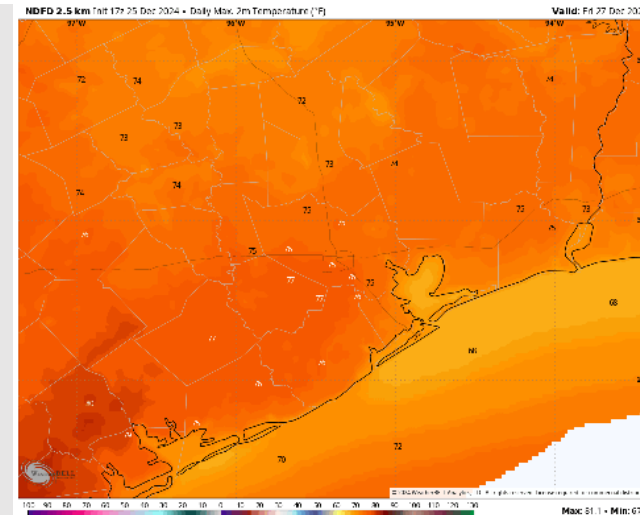
## Precip Image: 5 PM CT



Wind Speed  
12 PM CT



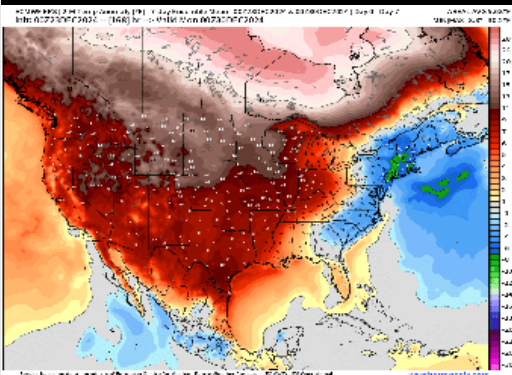
High Temps  
Friday



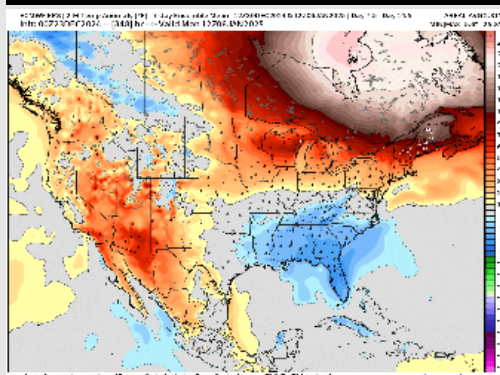


# Houston Pilots: 12/25/24

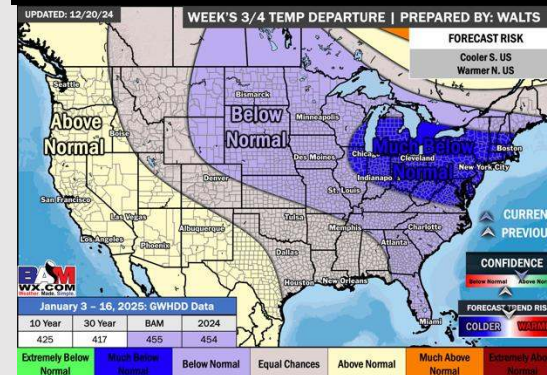
## Next 7 Day Temperature Departure



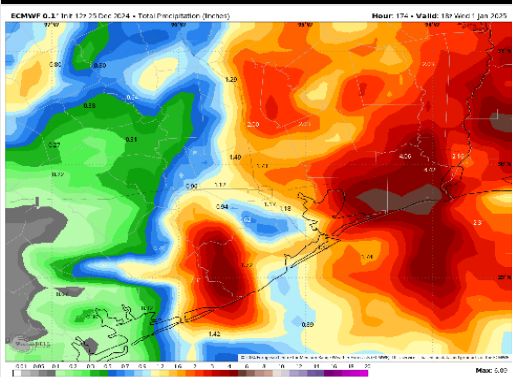
## 8-14 Day Temperature Departure



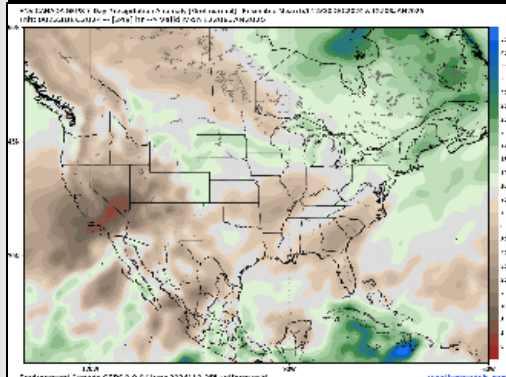
## 15-30 Day Temperature Departure



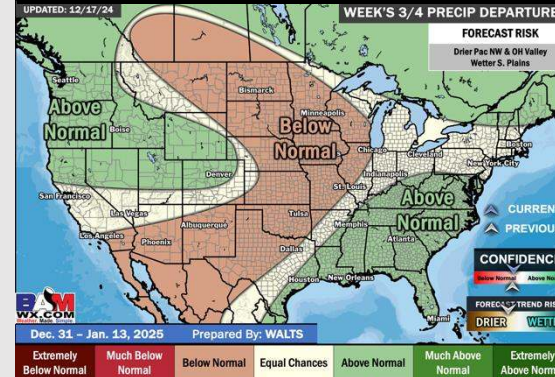
## Next 7 Day Total Precipitation



## 8-14 Day % of Average Precip.



## 15-30 Day % of Average Precip.



- Temps are expected to be much above normal for the week 1 timeframe. Expecting rain chances to continue through the week.
- Near to slightly below normal temperatures and below normal rainfall are expected for week 2.
- Near normal temperatures and above normal precipitation chances are expected for the weeks ¾ timeframe.