

# Houston Pilots Forecast Package



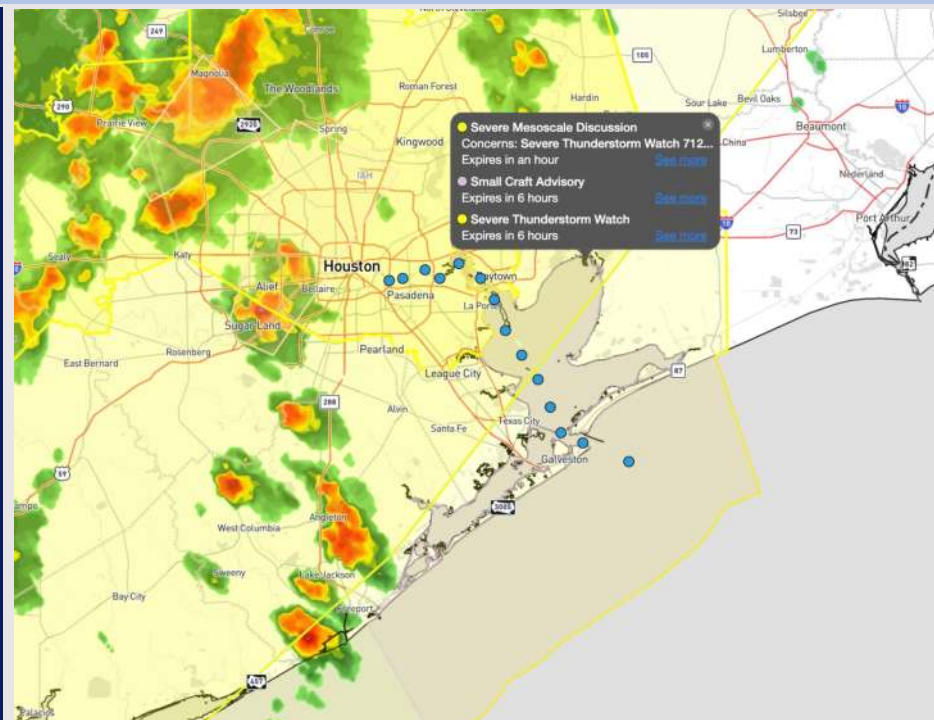
Updated: 11:30 PM CT

Tuesday, December 24, 2024

Forecaster: John Kemper

## Weather Headlines

- Non-T-Storm Gusts nearing 30 kts are favored at the Boarding Station through 3AM.
- We are no longer concerned about fog PRIOR to storm line with an ETA of ~3AM. Next fog risk will be Thursday AM.
- Sustained winds out of the SE causing wave heights of around 3 ft at the Boarding Station.
- **Widespread storms will push across all stations with strong/severe risks. See Nowcast slide for additional information on these hazards.**



**Current Radar: 11:30 PM CT**

As always, please do not hesitate to reach out to us with any forecast questions at **(317)-560-8122**. Press 1 for forecast questions.

You can also access real-time forecast updates and 24/7 meteorological chat assistance on your [Clarity](#) app. Click [here](#) for login assistance.



# Severe Storms Update

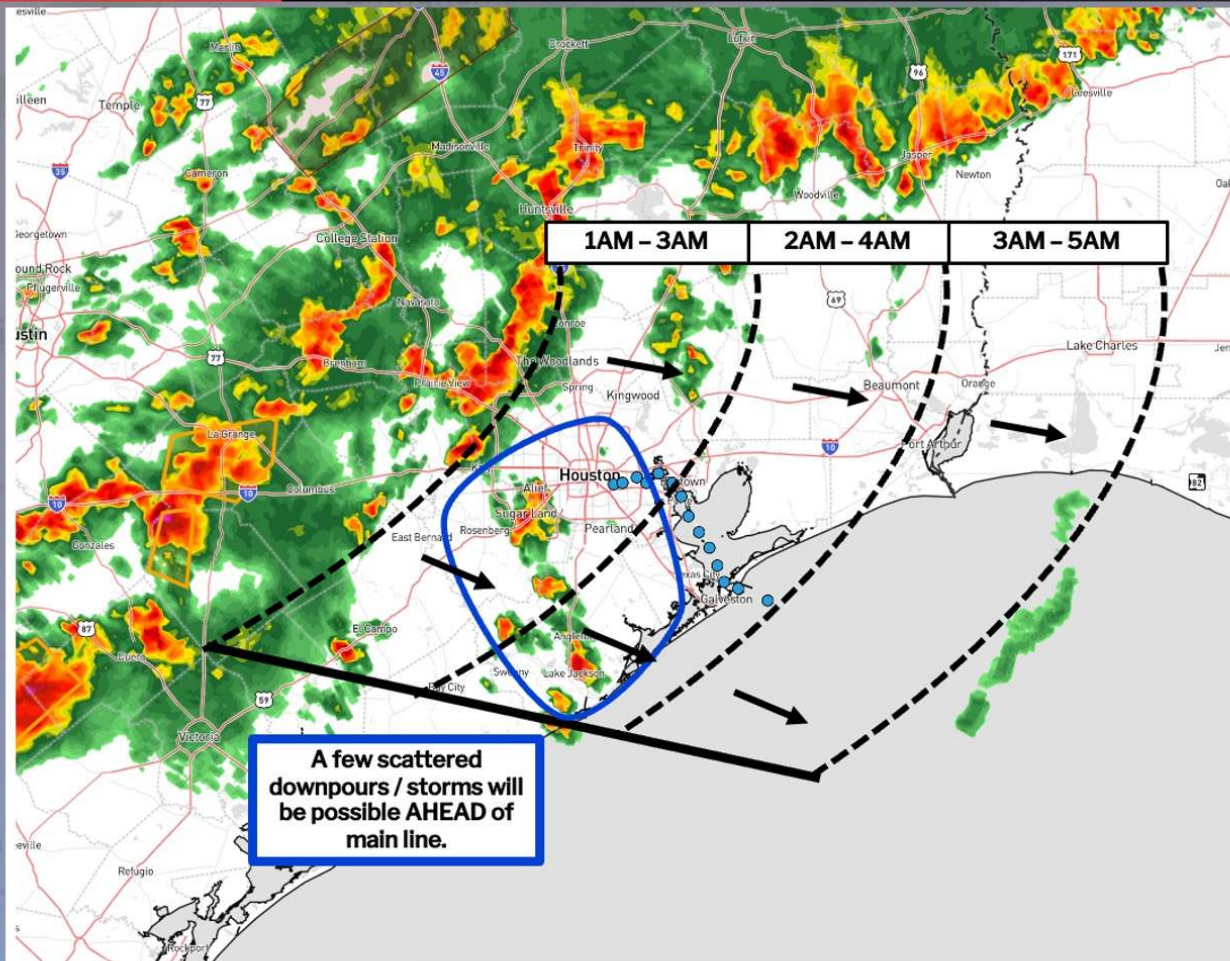


## Timeframes of "Best" Severe Potential

**NOWCAST**

11:30PM CT Tuesday, December 24<sup>th</sup>, 2024

Forecaster: Kemper



Graphic represents timeframes of BEST potential for strong/severe weather.

30-40 kt gusts along the leading edge of the storm front will be the greatest risk, however a few localized gusts of up to 50kts can't be ruled out.

Storm coverage to remain widespread through ~7AM.

**CURRENT RADAR: 11:25 PM-CT**

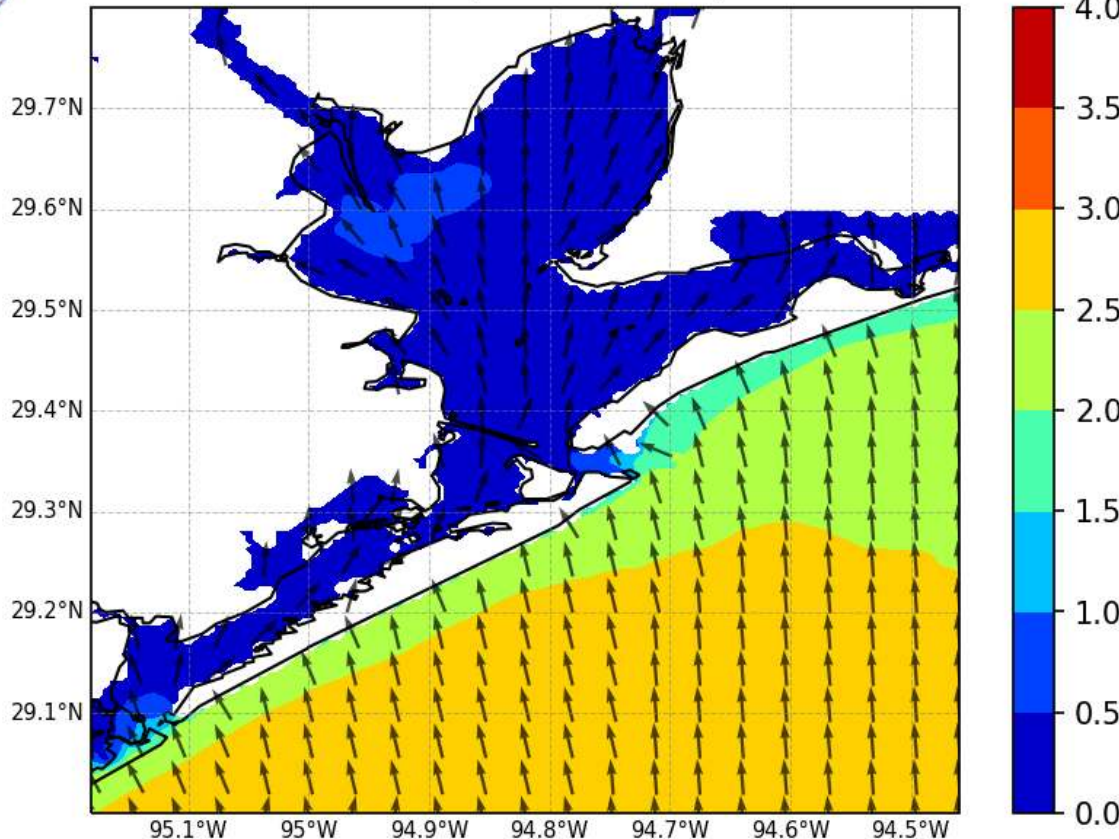


# Wave Height Forecast Update

~9 AM CT WED



NWPS Significant Wave Height (ft) and Peak Wave Direction  
Hour 33 (15Z25DEC2024)



Slightly elevated, sustained winds out of the S/SE are causing waves heights of 2.5 – 3 ft at the Boarding Station.

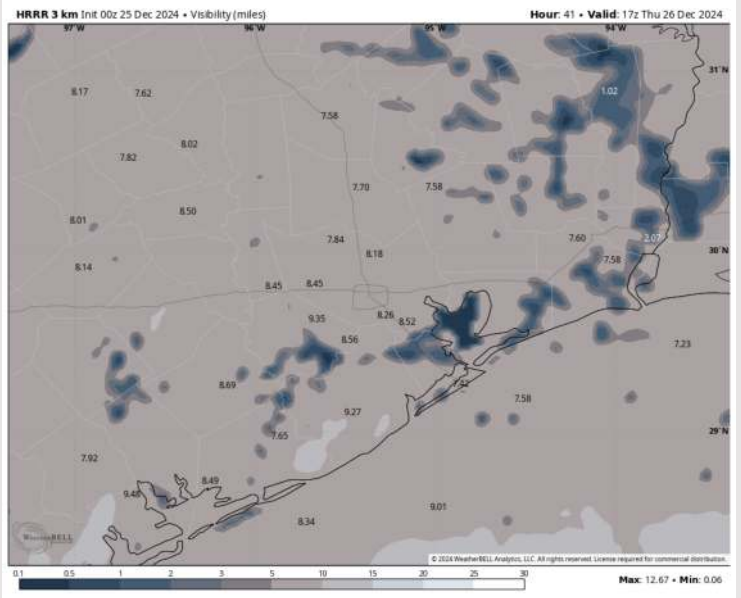
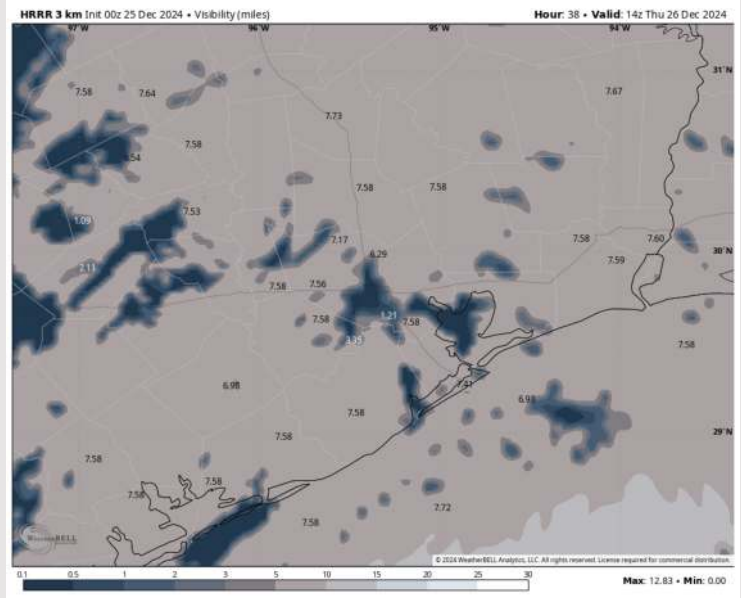
Stations N of the Boarding Station are seeing wave heights of 2.5 or less.

Expecting wave heights to be less than 2.5 ft for the Boarding Station by 6 AM WED and under 2 ft by 6 PM WED.

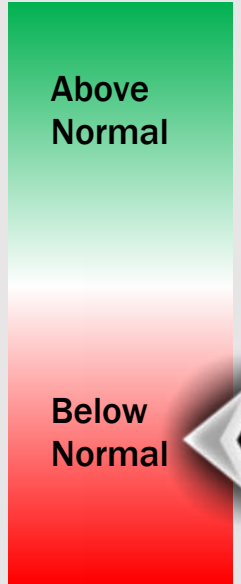
# Houston Pilots Visibility Report



## 8 AM CST THU VISIBILITY      11 AM CST THU VISIBILITY



## Confidence



TIMEFRAME DISCUSSED	THREAT
6AM to 1 PM THU	Low

- Isolated sea fog will be possible for stations N of 11/12 as southeasterly winds briefly strengthen for the Thursday AM hours – early Thursday afternoon. Confidence is low on exact timing.
- The greatest timeframe of risk is going to be between 7 – 10 AM Thursday. Isolated sea fog risks will also be accompanied by downpours, making this a lower threat overall.
- Any fog that develops should burn off by 1PM THU at the latest for all stations.

# Houston Pilots Extended Range Visibility Report



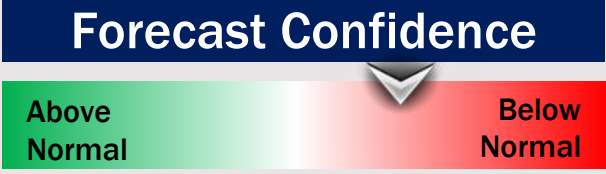
## Saturday 12/28/24

Visibility may be reduced to 2-4 miles under downpours Saturday AM. Monitoring sea fog risks for Stations S of 63/64 Saturday evening.



## Sunday 12/29/24

Fog is not favored to continue into Sunday AM, however we will continue to monitor trends.



## Monday 12/30/24

Monitoring for a low end, isolated sea fog risk for Monday AM. Confidence is low.



## Chance for Fog

Saturday AM	Unlikely
Saturday PM	Medium
Sunday AM	Unlikely
Sunday PM	Unlikely
Monday AM	Low
Monday PM	Unlikely

# Houston Pilots Visibility Chart (miles)



## Forecast Confidence

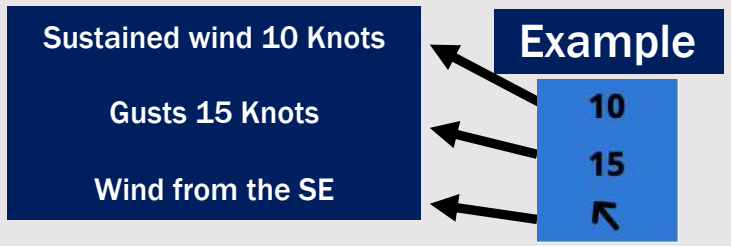


Visibility	Wed 12 am	Wed 1 am	Wed 2 am	Wed 3 am	Wed 4 am	Wed 5 am	Wed 6 am	Wed 7 am	Wed 8 am	Wed 9 am	Wed 10 am	Wed 11 am	Wed 12 pm	Wed 1 pm	Wed 2 pm	Wed 3 pm	Wed 4 pm	Wed 5 pm	Wed 6 pm	Wed 7 pm	Wed 8 pm	Wed 9 pm	Wed 10 pm	Wed 11 pm
Houston Pilots N - 610 Bridge	10	10	6.9	4.9	1.6	2.5	2.9	4.9	3.9	3.9	4.9	7.9	10	10	10	10	10	10	10	10	10	9	6.9	6.9
Houston Pilots M - Kinder 1	10	10	6.9	4.9	1.6	2.5	2.9	4.9	3.9	3.9	4.9	7.9	10	10	10	10	10	10	10	10	10	9	6.9	6.9
Houston Pilots L - Greens Bayou	10	10	6.9	4.9	1.6	2.5	2	3.9	3.9	3.9	4.9	6.9	10	10	10	10	10	10	10	10	10	9	6.9	6.9
Houston Pilots K - Shell Crude	10	10	6.9	4.9	1.1	2.5	2	3.9	3.9	3.9	4.9	6.9	10	10	10	10	10	10	10	10	10	9	6.9	5.9
Houston Pilots J - Lynchburg Ferries	10	10	6.9	4.9	1.6	2.5	2	2.9	3.9	3.9	4.9	6.9	10	10	10	10	10	10	10	10	10	9	6.9	6.9
Houston Pilots I - Exxon 3	10	7.9	6.9	4.9	1.1	2.5	2	1.6	3.9	3.9	4.9	6.9	10	10	10	10	10	10	10	10	10	9	6.9	5.9
Houston Pilots H - Morgans Point	10	7.9	6.9	4.9	1.1	2	2	1.6	3.9	3.9	4.9	7.9	10	10	10	10	10	10	10	10	10	9	6.9	5.9
Houston Pilots G - 75/76	10	10	10	10	1.1	2	2	1.6	2.9	3.9	4.9	7.9	10	10	10	10	10	10	10	10	10	7.9	8	9
Houston Pilots F - 63/64	10	10	10	10	2.5	1.1	2	1.6	2.9	3.9	4.9	7.9	10	10	10	10	10	10	10	10	10	7.9	8	8
Houston Pilots E - 51/52	10	10	10	10	10	1.1	1.1	2	2.9	3.9	6.9	7.9	10	10	10	10	10	10	10	10	10	7.9	8	8
Houston Pilots D - 37/38	10	10	10	10	10	1.1	1.1	2	2.9	3.9	6.9	7.9	10	10	10	10	10	10	10	10	10	7.9	8	8
Houston Pilots C - 25/26	10	10	10	10	10	1.1	1.1	2	2.9	2.9	6.9	7.9	10	10	10	10	10	10	10	10	10	6.9	8	8
Houston Pilots B - 11/12	10	10	10	10	10	1.1	2.5	2	2.9	2.9	6.9	5.9	6.9	10	10	10	10	10	10	10	10	6.9	9	8
Houston Pilots A - 1 & 2 Bravo	10	10	10	10	10	2.9	2.9	2.5	2.5	4.9	10	9	6.9	10	10	10	10	10	9	10	9	6.9	9	8

**NOTE: This is automated data that may/may not agree with the official BAM thinking that's found on the daily slides or special visibility report slides. This data should be used as a guide only**



# Houston Pilots Wind Chart



Wind	Wed 12 am	Wed 1 am	Wed 2 am	Wed 3 am	Wed 4 am	Wed 5 am	Wed 6 am	Wed 7 am	Wed 8 am	Wed 9 am	Wed 10 am	Wed 11 am	Wed 12 pm	Wed 1 pm	Wed 2 pm	Wed 3 pm	Wed 4 pm	Wed 5 pm	Wed 6 pm	Wed 7 pm	Wed 8 pm	Wed 9 pm	Wed 10 pm	Wed 11 pm
Houston Pilots N - 610 Bridge	7 ↖	6 ↖	6 ↖	6 ↖	6 ↖	6 ↖	5 ↖	5 ↖	5 ↖	5 ↖	5 ↖	6 ↖	6 ↖	6 ↖	6 ↖	6 ↖	5 ↖	5 ↖	5 ↖	3 ↖	3 ↖	3 ↖	3 ↖	3 ↖
Houston Pilots M - Kinder 1	7 ↖	6 ↖	6 ↖	6 ↖	6 ↖	6 ↖	5 ↖	5 ↖	5 ↖	5 ↖	5 ↖	6 ↖	6 ↖	6 ↖	6 ↖	6 ↖	6 ↖	5 ↖	5 ↖	3 ↖	3 ↖	3 ↖	3 ↖	3 ↖
Houston Pilots L - Greens Bayou	7 ↖	6 ↖	6 ↖	6 ↖	6 ↖	6 ↖	5 ↖	5 ↖	5 ↖	5 ↖	6 ↖	6 ↖	6 ↖	6 ↖	6 ↖	6 ↖	6 ↖	6 ↖	6 ↖	5 ↖	3 ↖	3 ↖	3 ↖	3 ↖
Houston Pilots K - Shell Crude	7 ↖	6 ↖	6 ↖	6 ↖	6 ↖	6 ↖	5 ↖	5 ↖	5 ↖	5 ↖	6 ↖	6 ↖	6 ↖	6 ↖	6 ↖	6 ↖	6 ↖	6 ↖	6 ↖	5 ↖	3 ↖	3 ↖	3 ↖	3 ↖
Houston Pilots J - Lynchburg Ferries	7 ↖	6 ↖	6 ↖	6 ↖	6 ↖	6 ↖	5 ↖	5 ↖	5 ↖	5 ↖	6 ↖	6 ↖	6 ↖	6 ↖	6 ↖	6 ↖	6 ↖	6 ↖	6 ↖	5 ↖	3 ↖	3 ↖	3 ↖	3 ↖
Houston Pilots I - Exxon 3	10 ↖	10 ↖	9 ↖	9 ↖	8 ↖	8 ↖	8 ↖	8 ↖	8 ↖	8 ↖	7 ↖	7 ↖	7 ↖	8 ↖	8 ↖	7 ↖	7 ↖	7 ↖	7 ↖	6 ↖	6 ↖	6 ↖	6 ↖	6 ↖
Houston Pilots H - Morgans Point	10 ↖	10 ↖	9 ↖	9 ↖	8 ↖	8 ↖	8 ↖	8 ↖	8 ↖	7 ↖	7 ↖	7 ↖	7 ↖	8 ↖	7 ↖	7 ↖	7 ↖	7 ↖	7 ↖	6 ↖	6 ↖	6 ↖	6 ↖	6 ↖
Houston Pilots G - 75/76	13 ↖	10 ↖	10 ↖	10 ↖	10 ↖	10 ↖	10 ↖	9 ↖	9 ↖	8 ↖	8 ↖	8 ↖	8 ↖	8 ↖	7 ↖	7 ↖	7 ↖	7 ↖	7 ↖	6 ↖	6 ↖	6 ↖	7 ↖	7 ↖
Houston Pilots F - 63/64	12 ↖	10 ↖	10 ↖	10 ↖	10 ↖	9 ↖	9 ↖	9 ↖	9 ↖	8 ↖	8 ↖	8 ↖	8 ↖	7 ↖	7 ↖	6 ↖	7 ↖	7 ↖	6 ↖	6 ↖	6 ↖	6 ↖	6 ↖	7 ↖
Houston Pilots E - 51/52	12 ↖	10 ↖	10 ↖	10 ↖	10 ↖	9 ↖	9 ↖	9 ↖	8 ↖	8 ↖	8 ↖	8 ↖	8 ↖	8 ↖	7 ↖	6 ↖	6 ↖	6 ↖	6 ↖	6 ↖	6 ↖	6 ↖	6 ↖	6 ↖
Houston Pilots D - 37/38	12 ↖	10 ↖	10 ↖	10 ↖	10 ↖	9 ↖	9 ↖	9 ↖	8 ↖	8 ↖	8 ↖	8 ↖	8 ↖	8 ↖	7 ↖	7 ↖	7 ↖	6 ↖	6 ↖	6 ↖	6 ↖	6 ↖	6 ↖	6 ↖
Houston Pilots C - 25/26	10 ↖	10 ↖	10 ↖	9 ↖	9 ↖	9 ↖	9 ↖	8 ↖	8 ↖	8 ↖	8 ↖	8 ↖	8 ↖	8 ↖	8 ↖	7 ↖	7 ↖	6 ↖	6 ↖	6 ↖	6 ↖	6 ↖	6 ↖	6 ↖
Houston Pilots B - 11/12	10 ↖	9 ↖	9 ↖	8 ↖	8 ↖	8 ↖	8 ↖	8 ↖	8 ↖	8 ↖	8 ↖	8 ↖	8 ↖	8 ↖	8 ↖	8 ↖	7 ↖	6 ↖	6 ↖	6 ↖	6 ↖	6 ↖	6 ↖	6 ↖
Houston Pilots A - 1 & 2 Bravo	13 ↖	12 ↖	12 ↖	10 ↖	10 ↖	10 ↖	10 ↖	10 ↖	10 ↖	10 ↖	9 ↖	9 ↖	9 ↖	8 ↖	8 ↖	8 ↖	8 ↖	7 ↖	7 ↖	7 ↖	7 ↖	7 ↖	7 ↖	7 ↖

**NOTE: This is automated data that may/may not agree with the official BAM thinking that's found on the daily slides. This data should be used as a guide only.**

## Forecast Discussion

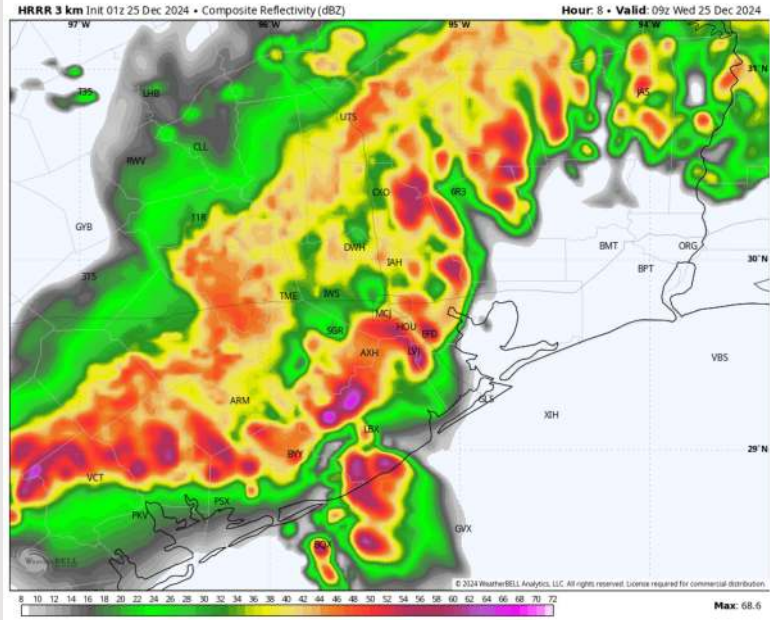
**Precip:** Favoring strong to potentially severe storms arriving around 3 AM today, lasting through 7 AM. Lightning, heavy downpours, gusty winds and isolated pockets of hail will all be a risk during peak storms between 3 – 5 AM. Beyond 7AM through about 12PM, a few downpours can't be ruled out.

**Wind:** Winds will be out of the SE through 3 AM before storms cause winds to become variable with a tendency out of the N. After 3 PM, winds shifts out of the SE and continue this direction for the rest of the day. **N of Morgan's Point:** Non-storm winds will be at 3 - 8 kts throughout the day. **S of Morgan's Point:** Non-storm winds will be 8 - 13 kts throughout today. **Wind gusts within the strongest storms early this AM may reach 40 – 50 kts.**

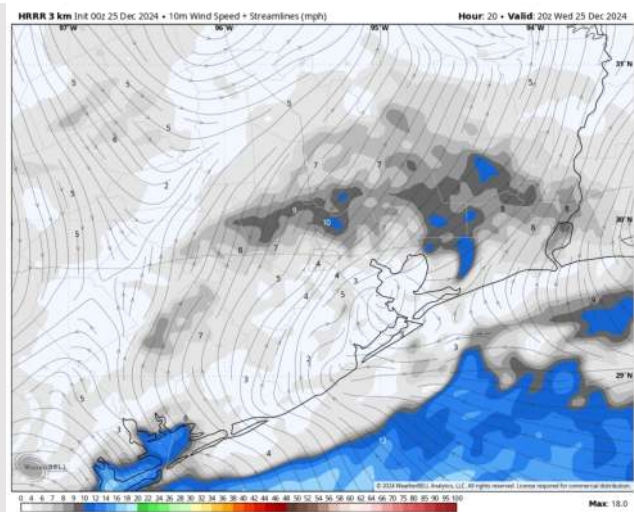
**High Temps:** **N of Morgan's Point:** Mid 70s F. **S of Morgan's Point:** Upper 60s – Near 70 F.

**Visibility:** Due to presence of storms, we are no longer favoring isolated sea fog concerns. Reduced visibility of 2-4 miles will be possible by heavy downpours.

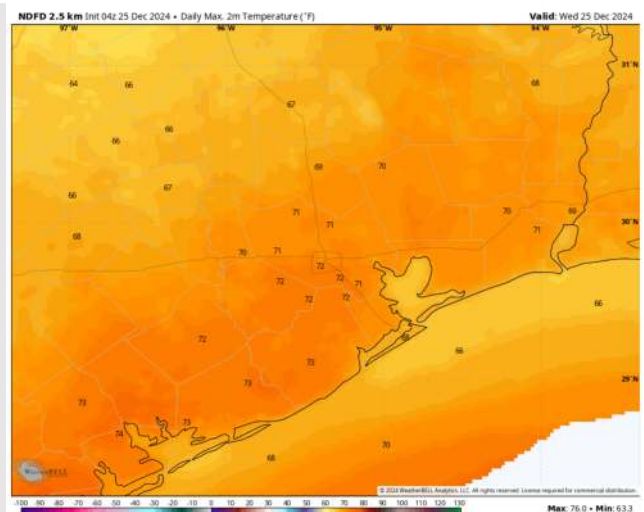
## Precip Image: 3 AM CT



Wind Speed:  
2 PM CT



High Temps  
Today





## Forecast Discussion

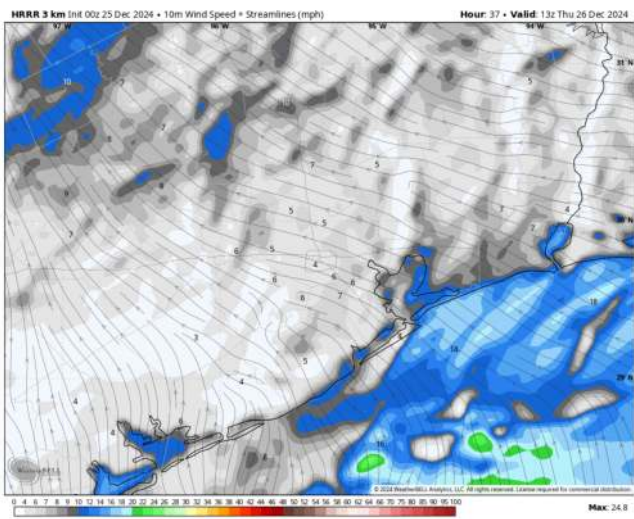
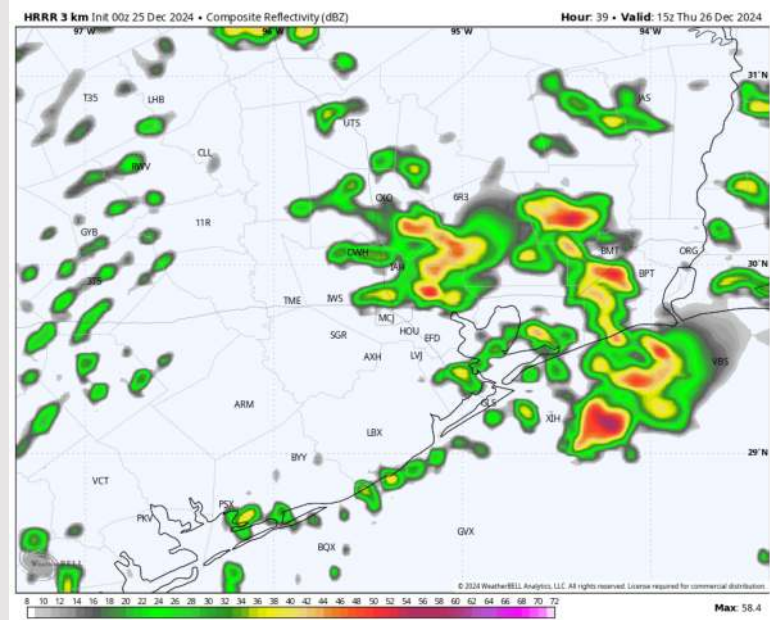
**Precip:** Isolated (20%) showers in play for all Stations between 7 AM and 12 PM before coverage slightly increases and becomes widely scattered (60%) through 6PM. A few strong to severe storms with gusty winds will be possible.

**Wind:** Winds direction will 'wobble' throughout the day, with a general tendency to be out of the S/SE. **N of Morgan's Point:** Winds will be at 4 – 9 kts throughout the day Thursday. **S of Morgan's Point:** Winds will be at 4 – 9 kts through 10 AM, increasing to 8– 13 kts for the rest of the day. **A few stronger gusts of 30 - 40kts + can't be ruled out from storms from 12PM – 6PM.**

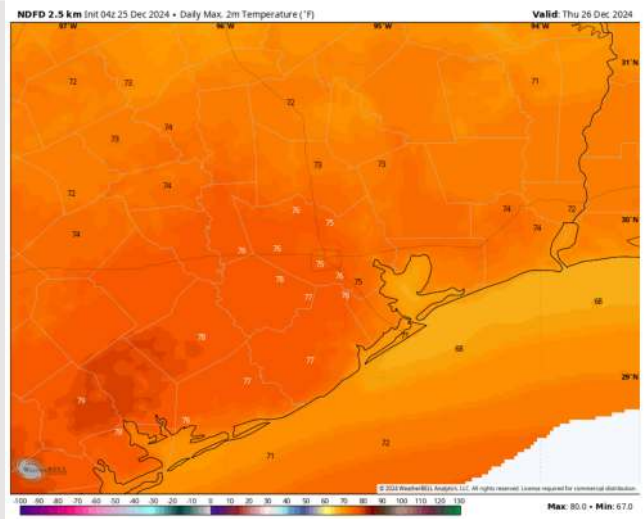
**High Temps:** **N of Morgan's Point:** Upper 70s F. **S of Morgan's Point:** Upper 60s – Near 70 F.

**Visibility:** Localized risks for sea fog in the AM can't be ruled out, although confidence is lower on timing due to presence of scattered downpours.

## Precip Image: 9 AM CT



Wind Speed:  
7 AM CT



High Temps  
Thursday

## Forecast Discussion

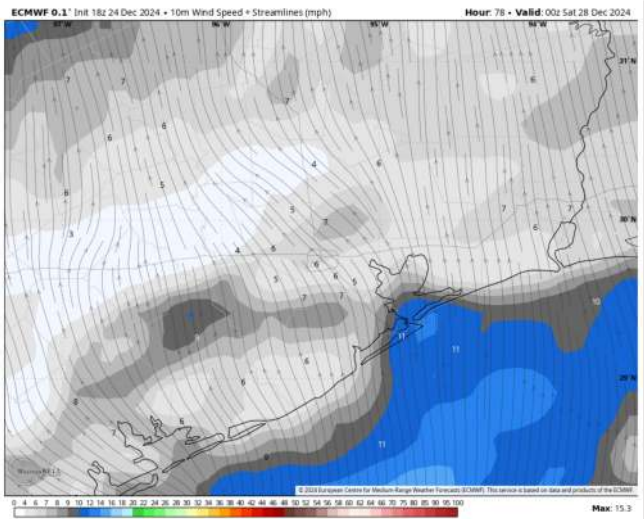
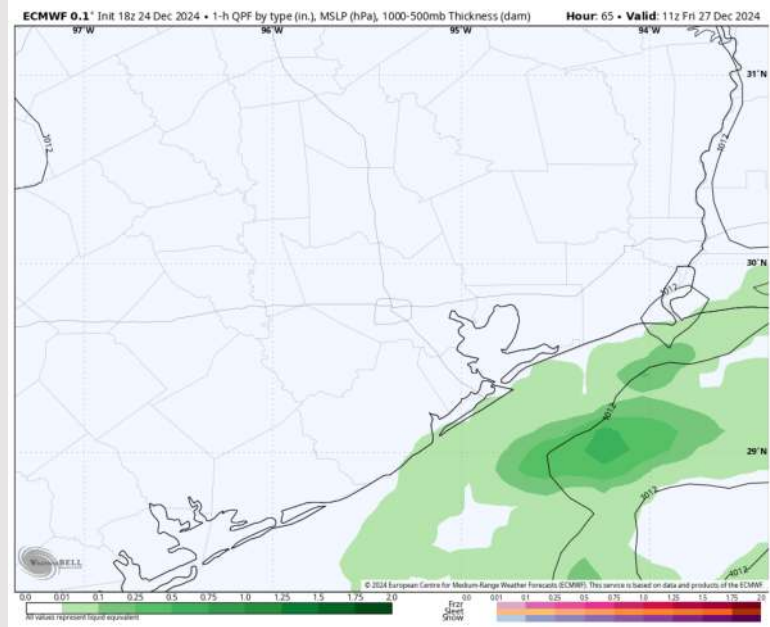
**Precip:** Scattered (40%) showers in play for all Stations until 10 AM as a front stalls over the area.

**Wind:** Winds will be out of the S/SE throughout the day, becoming more variable after 6 PM. **N of Morgan's Point:** Winds will be at 3 – 7 kts throughout Friday. **S of Morgan's Point:** Winds will be at 9 - 14 kts through Friday.

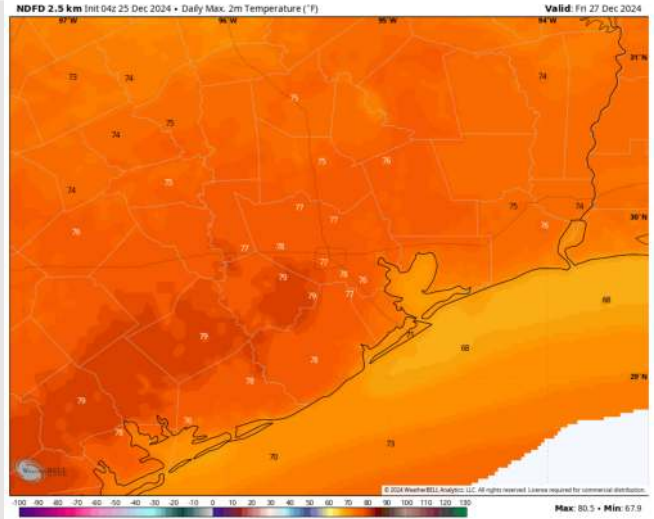
**High Temps:** **N of Morgan's Point:** Mid 70 F. **S of Morgan's Point:** Upper 60s F.

**Visibility:** Patchy sea fog risks will need to be monitored during the AM, although confidence is lower on exact timing due to uncertainty on when the front will pass over all stations.

## Precip Image: 5 AM CT



Wind Speed  
6 PM CT



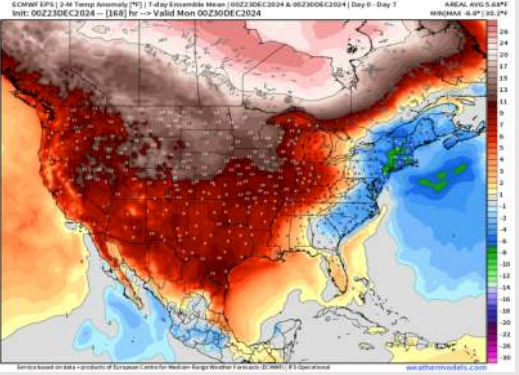
High Temps  
Friday



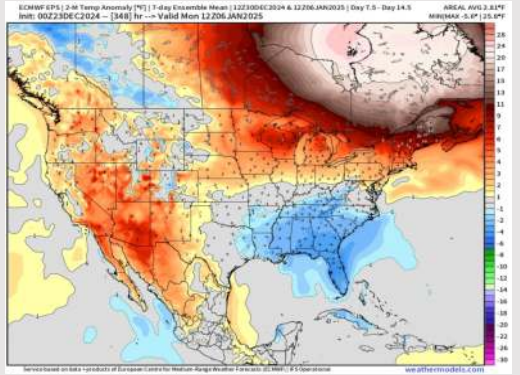
# Houston Pilots: 12/25/24



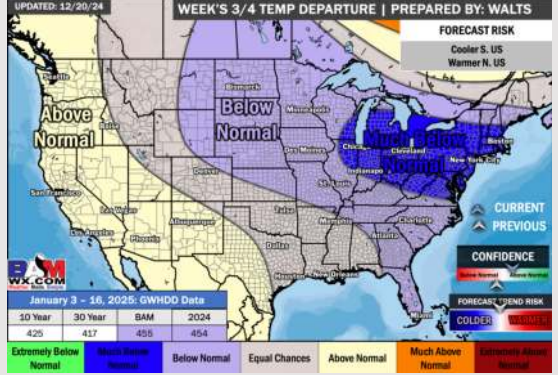
**Next 7 Day Temperature Departure**



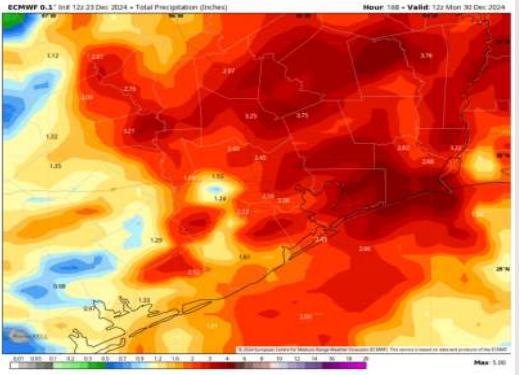
**8-14 Day Temperature Departure**



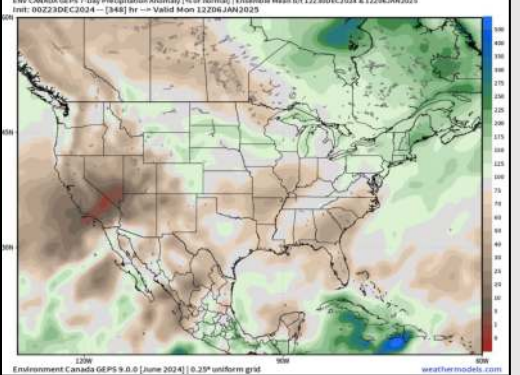
**15-30 Day Temperature Departure**



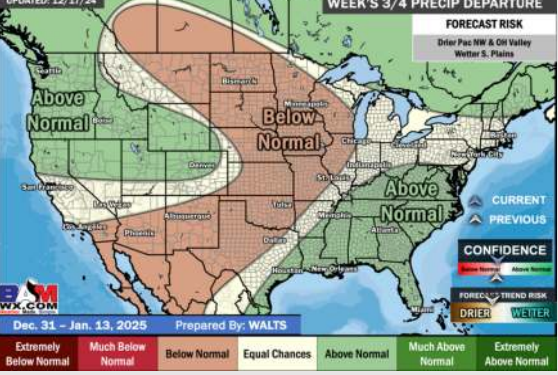
**Next 7 Day Total Precipitation**



**8-14 Day % of Average Precip.**



**15-30 Day % of Average Precip.**



- Temps are expected to be much above normal for the week 1 timeframe. Expecting rain chances to pickup mid-week with 2 – 3” favored in total by the end of the period.
- Near to slightly below normal temperatures and below normal rainfall are expected for week 2.
- Near normal temperatures and above normal precipitation chances are expected for the weeks ¾ timeframe.