

Severe T-Storm Watch Possible

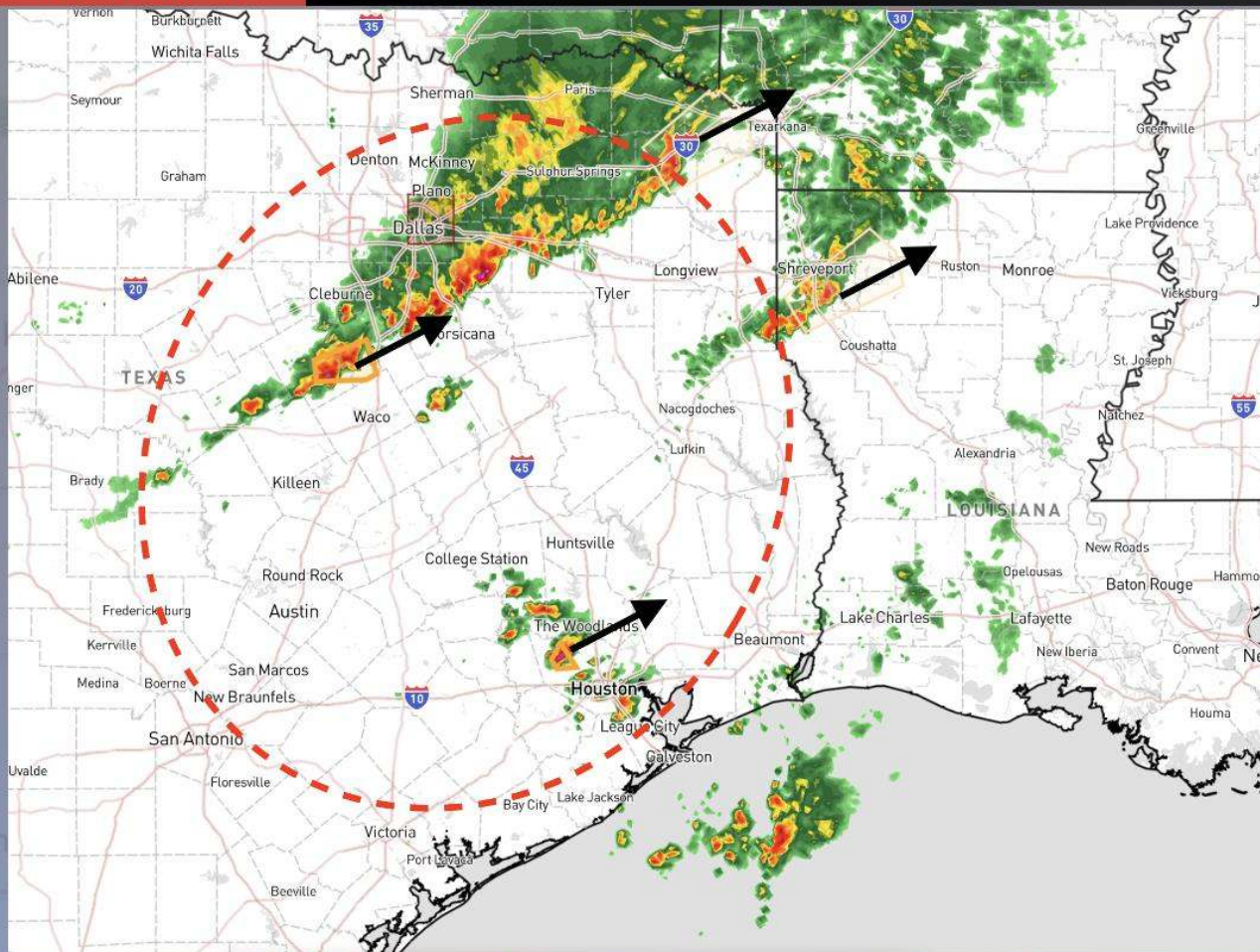


Severe T-Storm Watch Probability: 40%

NOWCAST

3:40 PM CT Tuesday, December 24, 2024

Forecaster: Kipper



RED AREA: Severe T-Storm Watch Possible as storms continue to develop MON PM

Risks include 50-60+ MPH Wind Gusts, Hail, Tornadoes

Coverage expected to expand to the SE throughout the evening/AM hours on WED

CURRENT RADAR: 3:35 PM CT TUE

Houston Pilots Forecast Package



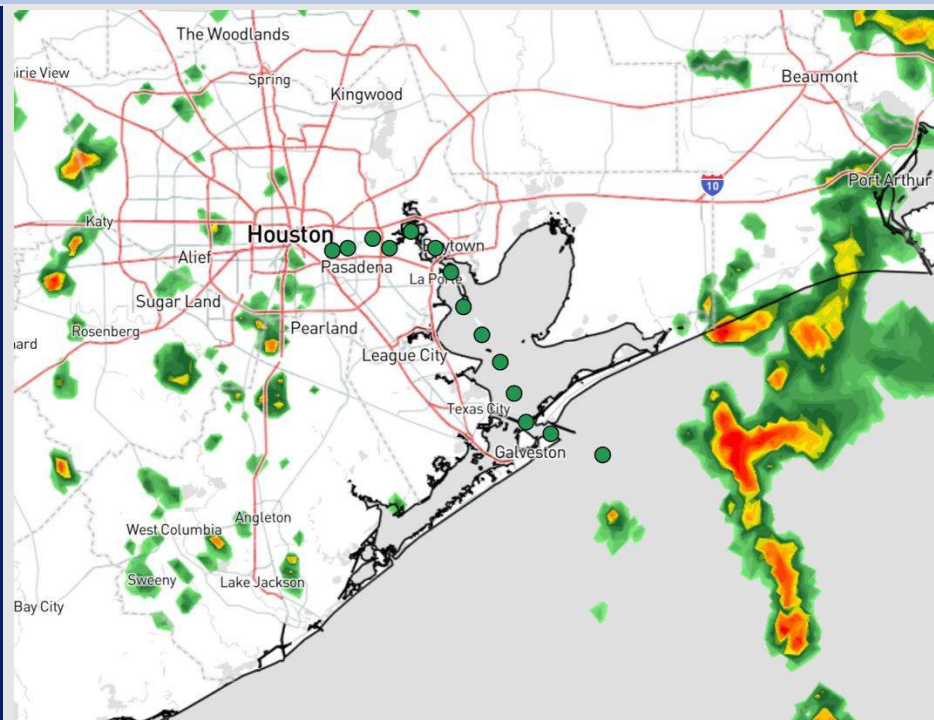
Updated: 1:00 PM CT

Tuesday, December 24, 2024

Forecaster: Alyssa Elliott

Weather Headlines

- Gusts of nearing 30 kts are favored at the Boarding Station this PM.
- Watching for a risk for slightly reduced visibility ahead of front. See Vis slide.
- Sustained winds out of the SE causing wave heights of around 3 ft at the Boarding Station.
- Scattered showers will continue today with **strong storm threats with gusts of 40+ kts possible WED AM. See Wednesday forecast slide.**



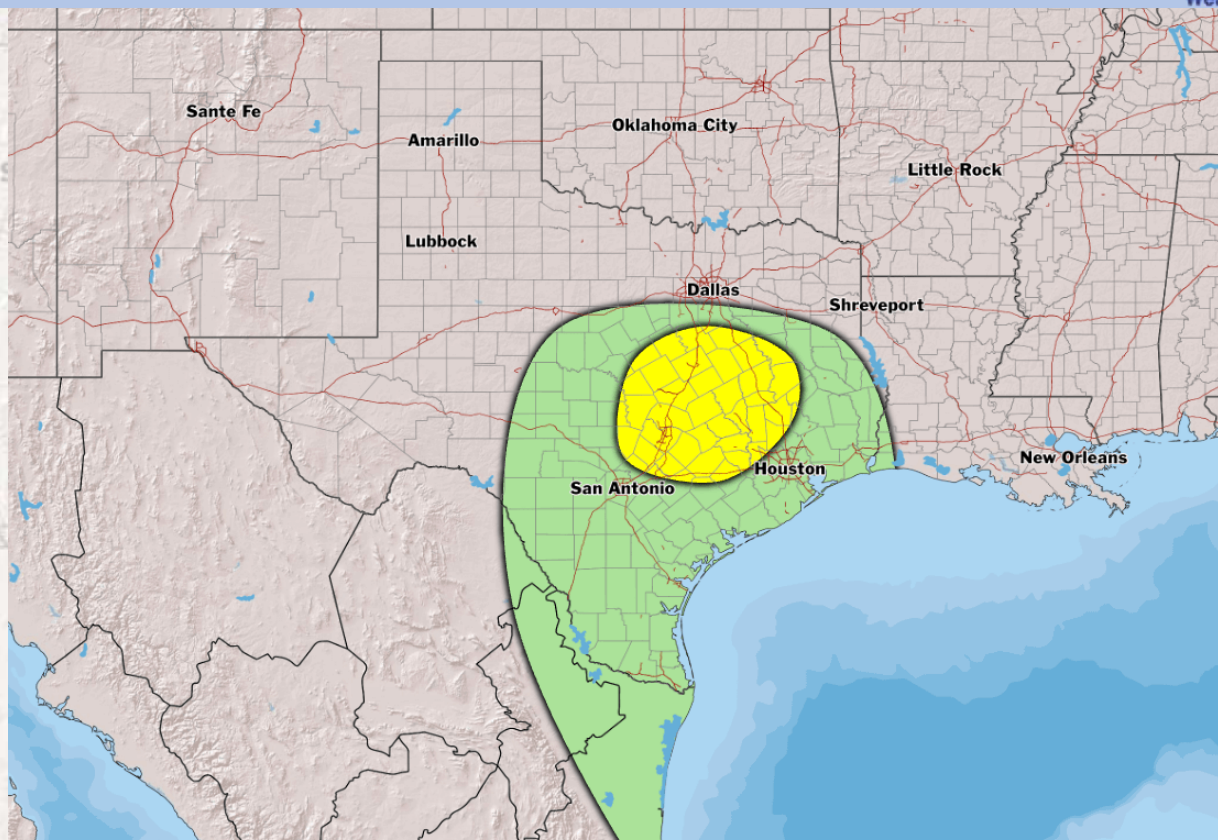
Current Radar: 12:45 PM CT

As always, please do not hesitate to reach out to us with any forecast questions at **(317)-560-8122**. Press 1 for forecast questions.

You can also access real-time forecast updates and 24/7 meteorological chat assistance on your [Clarity](#) app. Click [here](#) for login assistance.



Severe Risk Map for Christmas



RISK

LOW-END

POSSIBLE

LIKELY

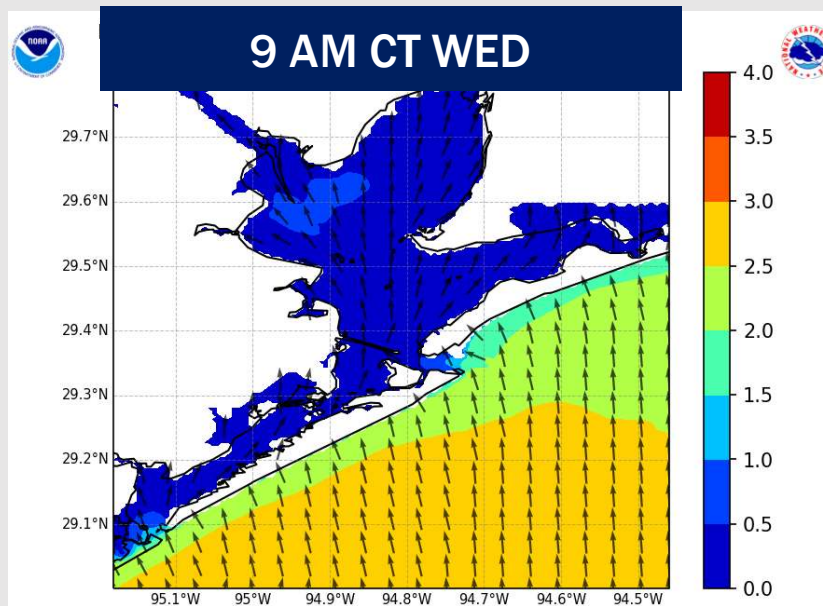
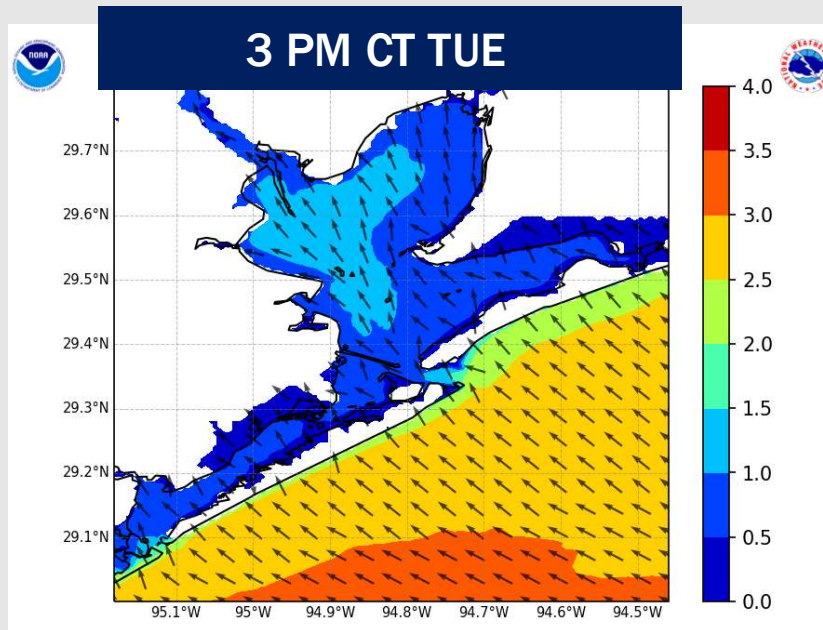
HIGHLY LIKELY

TIMING: TUE 6 PM (12/24) – WED 5 AM (12/25)

FORECAST NOTES:

- ✓ **Yellow:** A few severe storms. Localized Large Hail and Wind Gusts of 55+ MPH are possible as storms become more organized.
- ✓ **Green:** Wind gusts 45-60 MPH possible but will be fairly isolated in nature.

Wave Height Forecast Update



Slightly elevated, sustained winds out of the S/SE are causing waves heights of 2.5 – 3 ft at the Boarding Station.

Stations N of the Boarding Station are seeing wave heights of 2.5 or less.

Expecting wave heights to be less than 2.5 ft for the Boarding Station by 3 AM WED and under 2 ft by 6 PM WED.

Reduced Visibility Forecast

TIMEFRAME
DISCUSSED

9 PM TUE – 3 AM WED

THREAT

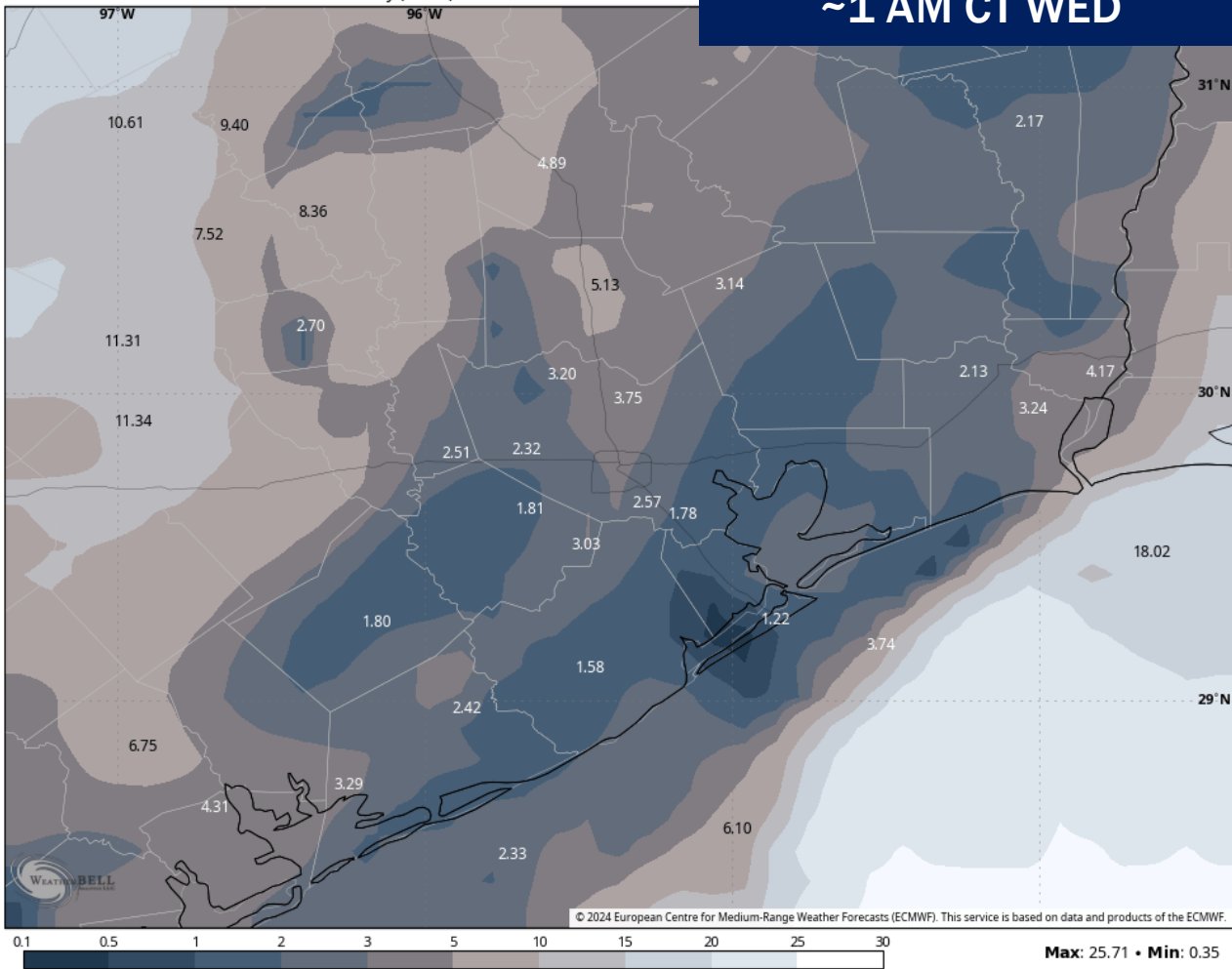
Low

Forecast Confidence

Above
Normal

Below
Normal

ECMWF 0.1° Init 12z 24 Dec 2024 • Visibility (miles)



~1 AM CT WED

Watching for a risk of reduced visibility to 1 – 3 miles late this PM into WED AM ahead of front.

The main timeframe to watch for this risk is as early as 9 PM this evening until the front works in around 3 AM.

Confidence is overall low for this threat.

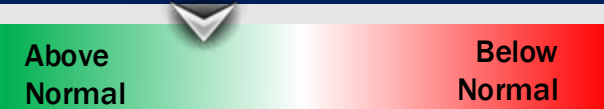
Houston Pilots Extended Range Visibility Report



Friday 12/27/24

Fog is not favored for Friday, but visibility may be reduced under downpours.

Forecast Confidence



Sunday 12/29/24

Fog is not favored for Sunday.

Forecast Confidence



Saturday 12/28/24

Visibility may be reduced to 2-4 miles under downpours Saturday AM. Monitoring sea fog risks for Stations S of 63/64 Saturday evening.

Forecast Confidence



Chance for Fog

Friday AM	Unlikely
Friday PM	Unlikely
Saturday AM	Unlikely
Saturday PM	Medium
Sunday AM	Unlikely
Sunday PM	Unlikely

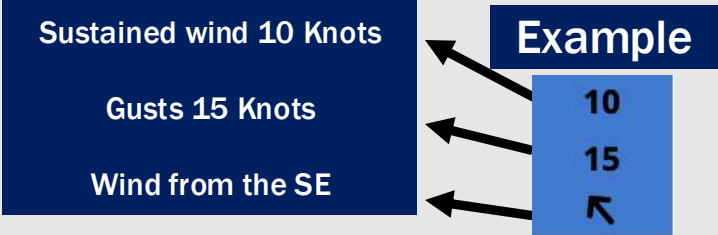
Houston Pilots Visibility Chart (miles)



Visibility	Tue 1 pm	Tue 2 pm	Tue 3 pm	Tue 4 pm	Tue 5 pm	Tue 6 pm	Tue 7 pm	Tue 8 pm	Tue 9 pm	Tue 10 pm	Tue 11 pm	Wed 12 am	Wed 1 am	Wed 2 am	Wed 3 am	Wed 4 am	Wed 5 am	Wed 6 am	Wed 7 am	Wed 8 am	Wed 9 am	Wed 10 am	Wed 11 am	Wed 12 pm
Houston Pilots N - 610 Bridge	10	10	10	10	10	10	10	10	10	10	10	9	7.9	7.9	6.9	5.9	4.9	4.9	3.9	2.5	1.6	3.9	4.9	6.9
Houston Pilots M - Kinder 1	10	10	10	10	10	10	10	10	10	10	10	9	7.9	7.9	6.9	5.9	4.9	4.9	3.9	2.5	1.6	3.9	4.9	6.9
Houston Pilots L - Greens Bayou	10	10	10	10	10	10	10	10	10	10	10	9	7.9	7.9	6.9	5.9	4.9	4.9	3.9	2.5	1.6	3.9	4.9	6.9
Houston Pilots K - Shell Crude	10	10	10	10	10	10	10	10	10	10	10	9	7.9	7.9	6.9	5.9	4.9	4.9	3.9	2.9	1.6	3.9	4.9	6.9
Houston Pilots J - Lynchburg Ferries	10	10	10	10	10	10	10	10	10	10	10	10	7.9	7.9	6.9	5.9	4.9	4.9	3.9	2.5	1.6	3.9	4.9	6.9
Houston Pilots I - Exxon 3	10	10	10	10	10	10	10	10	10	10	10	10	7.9	7.9	6.9	5.9	4.9	4.9	3.9	2.9	1.6	3.9	4.9	6.9
Houston Pilots H - Morgans Point	10	10	10	10	10	10	10	10	10	10	10	10	7.9	7.9	6.9	5.9	4.9	4.9	3.9	2.9	1.6	3.9	4.9	6.9
Houston Pilots G - 75/76	10	10	10	10	10	10	10	10	10	10	10	10	9	7.9	7.9	6.9	6.9	4.9	4.9	3.9	2.9	3.9	4.9	8
Houston Pilots F - 63/64	10	10	10	10	10	10	10	10	10	10	10	10	9	9	7.9	6.9	6.9	4.9	4.9	3.9	2.9	3.9	4.9	8
Houston Pilots E - 51/52	10	10	10	10	10	10	10	10	10	10	10	10	10	9	9	7.9	6.9	5.9	5.9	4.9	2.9	3.9	4.9	8
Houston Pilots D - 37/38	10	10	10	10	10	10	10	10	10	10	10	10	10	9	9	7.9	6.9	6.9	5.9	4.9	2.9	4.9	5.9	8
Houston Pilots C - 25/26	10	10	10	10	10	10	10	10	10	10	10	10	10	10	10	9	6.9	6.9	5.9	4.9	3.9	4.9	5.9	8
Houston Pilots B - 11/12	10	10	10	10	10	10	10	10	10	10	10	10	10	10	10	9	7.9	6.9	6.9	4.9	3.9	4.9	5.9	8
Houston Pilots A - 1 & 2 Bravo	10	10	10	10	10	10	10	10	10	10	10	10	10	10	10	10	9	8	6.9	6.9	4.9	4.9	5.9	8

NOTE: This is automated data that may/may not agree with the official BAM thinking that's found on the daily slides or special visibility report slides. This data should be used as a guide only

Houston Pilots Wind Chart



Wind	Tue 1 pm	Tue 2 pm	Tue 3 pm	Tue 4 pm	Tue 5 pm	Tue 6 pm	Tue 7 pm	Tue 8 pm	Tue 9 pm	Tue 10 pm	Tue 11 pm	Wed 12 am	Wed 1 am	Wed 2 am	Wed 3 am	Wed 4 am	Wed 5 am	Wed 6 am	Wed 7 am	Wed 8 am	Wed 9 am	Wed 10 am	Wed 11 am	Wed 12 pm
Houston Pilots N - 610 Bridge	10	10	10	10	10	10	9	8	8	8	8	7	7	6	6	6	6	6	5	5	5	6	6	6
	20	21	21	22	21	20	18	17	17	17	16	15	15	15	14	13	13	12	10	10	10	10	10	13
	↖	↖	↖	↖	↖	↖	↖	↖	↖	↖	↖	↖	↖	↖	↖	↓	↓	↓	↖	↖	↖	↖	↖	↖
Houston Pilots M - Kinder 1	10	10	10	10	10	10	9	8	8	8	8	7	7	6	6	6	6	6	5	5	5	6	6	6
	20	21	22	22	21	20	18	17	17	17	16	15	15	15	14	13	13	12	10	10	10	10	10	13
	↖	↖	↖	↖	↖	↖	↖	↖	↖	↖	↖	↖	↖	↖	↖	↓	↓	↓	↖	↖	↖	↖	↖	↖
Houston Pilots L - Greens Bayou	10	10	10	10	10	10	9	9	8	8	8	7	7	6	6	6	6	6	5	5	5	6	6	6
	21	22	22	22	21	20	18	17	17	17	16	15	15	15	14	13	13	12	10	10	10	10	12	13
	↖	↖	↖	↖	↖	↖	↖	↖	↖	↖	↖	↖	↖	↖	↖	↖	↓	↓	↖	↖	↖	↖	↖	↖
Houston Pilots K - Shell Crude	10	10	12	12	10	10	9	8	8	8	8	7	7	6	6	6	6	6	5	5	5	6	6	6
	21	22	22	22	21	20	18	17	17	17	16	15	15	15	14	14	13	12	10	10	10	10	12	13
	↖	↖	↖	↖	↖	↖	↖	↖	↖	↖	↖	↖	↖	↖	↖	↖	↓	↓	↖	↖	↖	↖	↖	↖
Houston Pilots J - Lynchburg Ferries	12	12	12	12	12	10	9	8	8	8	8	7	6	6	6	6	6	6	5	5	5	6	6	6
	21	22	22	22	22	20	18	17	17	17	16	15	15	15	14	13	13	12	10	10	10	10	12	13
	↖	↖	↖	↖	↖	↖	↖	↖	↖	↖	↖	↖	↖	↖	↖	↖	↓	↓	↖	↖	↖	↖	↖	↖
Houston Pilots I - Exxon 3	13	13	13	14	14	14	13	13	13	13	13	12	10	10	10	9	9	8	8	8	7	7	7	8
	21	22	22	23	22	20	20	18	20	18	18	17	16	15	15	15	14	14	13	12	12	12	12	13
	↖	↖	↖	↖	↖	↖	↖	↖	↖	↖	↖	↖	↖	↖	↖	↖	↖	↖	↖	↖	↖	↖	↖	↖
Houston Pilots H - Morgans Point	13	13	13	13	13	13	13	13	13	13	13	12	10	10	9	9	8	8	8	8	7	7	7	7
	21	22	22	22	22	20	20	18	18	18	17	16	15	15	15	15	14	13	13	12	12	12	12	13
	↖	↖	↖	↖	↖	↖	↖	↖	↖	↖	↖	↖	↖	↖	↖	↖	↓	↓	↖	↖	↖	↖	↖	↖
Houston Pilots G - 75/76	13	13	14	14	14	14	13	13	14	14	13	13	12	12	10	10	10	10	9	8	8	8	8	8
	21	22	22	23	22	21	20	20	20	20	20	18	17	16	16	16	15	15	14	14	13	13	13	13
	↖	↖	↖	↖	↖	↖	↖	↖	↖	↖	↖	↖	↖	↖	↖	↖	↓	↓	↖	↖	↖	↖	↖	↖
Houston Pilots F - 63/64	13	13	13	14	14	13	13	13	13	14	13	13	12	10	10	10	10	10	9	9	8	8	8	8
	21	22	22	23	22	20	20	18	20	20	18	17	16	16	15	16	15	15	14	14	13	13	13	13
	↖	↖	↖	↖	↖	↖	↖	↖	↖	↖	↖	↖	↖	↖	↖	↖	↓	↓	↖	↖	↖	↖	↖	↖
Houston Pilots E - 51/52	13	13	13	13	13	13	13	13	13	13	13	12	10	10	10	10	9	9	9	9	8	8	8	8
	21	21	21	21	21	20	18	18	18	20	18	17	16	15	15	15	15	15	14	14	13	13	13	13
	↖	↖	↖	↖	↖	↖	↖	↖	↖	↖	↖	↖	↖	↖	↖	↖	↖	↖	↖	↖	↖	↖	↖	↖
Houston Pilots D - 37/38	13	13	13	13	13	13	13	13	13	13	13	12	10	10	10	9	9	9	9	8	8	8	8	8
	21	21	21	21	21	20	18	18	18	18	18	17	16	15	15	15	15	14	14	14	13	13	13	13
	↖	↖	↖	↖	↖	↖	↖	↖	↖	↖	↖	↖	↖	↖	↖	↖	↖	↖	↖	↖	↖	↖	↖	↖
Houston Pilots C - 25/26	13	13	13	13	13	12	12	12	12	13	12	10	10	10	9	9	9	9	9	8	8	8	8	8
	20	21	20	20	20	20	18	17	18	18	18	17	16	15	15	15	15	14	15	14	13	13	13	13
	↖	↖	↖	↖	↖	↖	↖	↖	↖	↖	↖	↖	↖	↖	↖	↖	↖	↓	↓	↖	↖	↖	↖	↖
Houston Pilots B - 11/12	13	12	12	12	12	10	10	10	10	10	10	10	9	9	8	8	8	8	8	8	8	8	8	8
	20	20	20	18	18	18	17	17	18	18	18	17	16	15	15	15	15	14	14	14	13	13	13	13
	↖	↖	↖	↖	↖	↖	↖	↖	↖	↖	↖	↖	↖	↖	↖	↖	↖	↓	↓	↖	↖	↖	↖	↖
Houston Pilots A - 1 & 2 Bravo	13	13	13	13	13	13	13	13	13	13	13	13	12	12	10	10	10	10	10	10	9	9	9	8
	20	20	20	20	20	20	20	18	20	20	20	18	17	17	16	16	15	16	16	15	15	14	14	13
	↖	↖	↖	↖	↖	↖	↖	↖	↖	↖	↖	↖	↖	↖	↖	↖	↖	↓	↓	↓	↖	↖	↖	↖

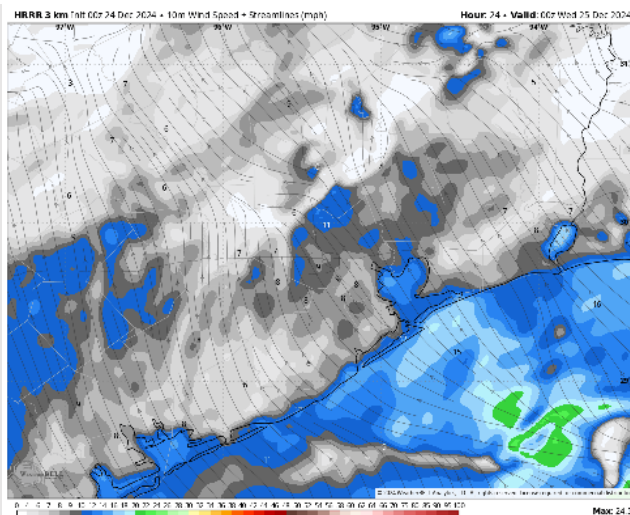
NOTE: This is automated data that may/may not agree with the official BAM thinking that's found on the daily slides.
This data should be used as a guide only.

Precip Image: 4 PM CT

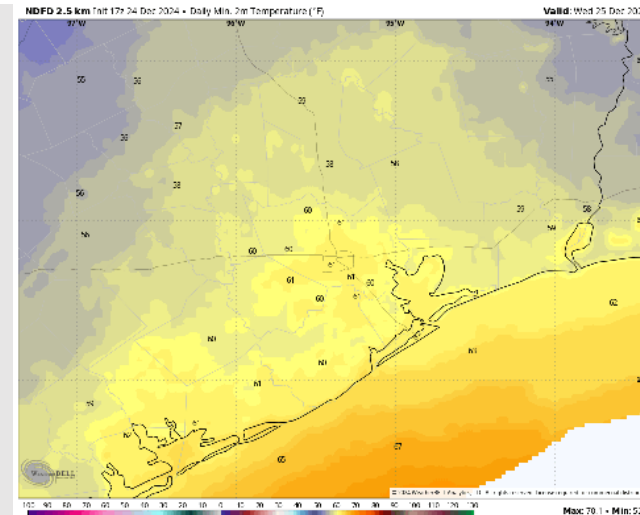
[illegible]

Low Temps: N of Morgan's Point: Near 60 F. S of Morgan's Point: Low 60s F.

Visibility: Patchy fog risk ahead of front, starting as early as 9 PM.



Wind Speed
6 PM CT



**Low Temps
WED AM**

Houston Pilots: WED. 12/25/2024

Forecast Discussion

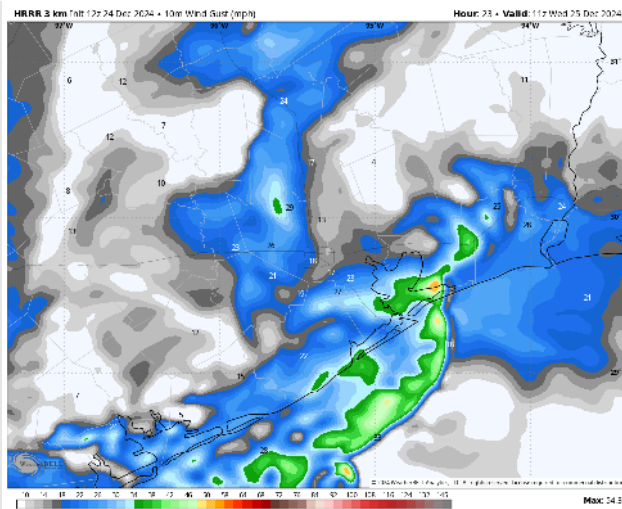
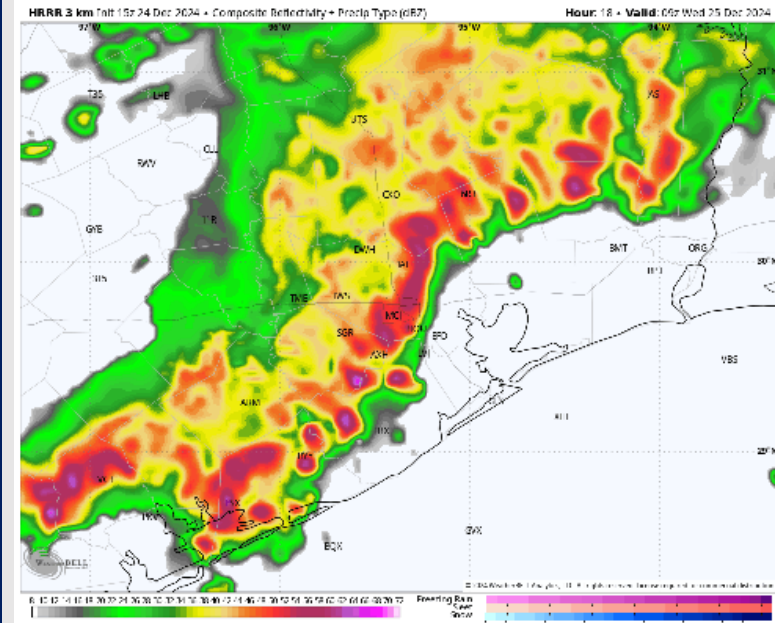
Precip: Favoring strong to potentially severe storms arrive around 3 AM WED lasting through 10 AM. Lightning, heavy downpours, gusty winds and isolated pockets of hail will all be a risk during peak storms between 3 – 5 AM.

Wind: Winds will be out of the SE through 3 AM before storms cause winds to become variable with a tendency out of the N. After 10 AM, winds shifts out of the SE and continue this direction for the rest of the day. **N of Morgan's Point:** Non-storm winds will be at 3 - 8 kts throughout the day. **S of Morgan's Point:** Non-storm winds will be 8 - 13 kts throughout the day. **Wind gusts within the strongest storms early WED AM may reach 40 – 45 kts.**

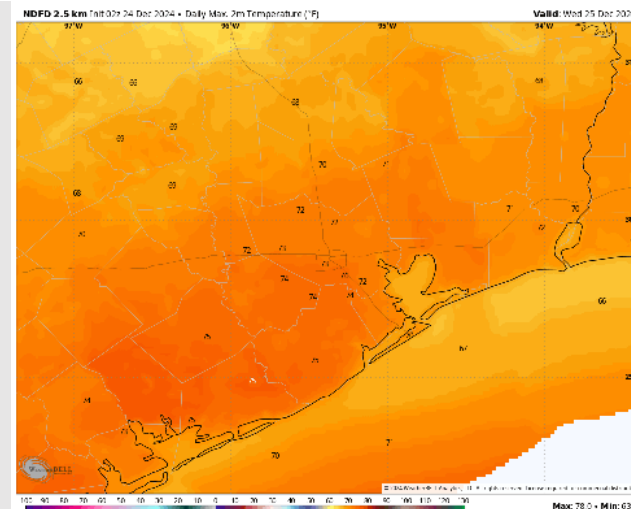
High Temps: **N of Morgan's Point:** Mid 70s F. **S of Morgan's Point:** Upper 60s – Near 70 F.

Visibility: Patchy fog reducing visibility to 1 – 3 miles may be briefly present ahead of the front WED AM, however storms will rid fog concerns and any visibility issues will be caused by heavy downpours. **See visibility slide.**

Precip Image: 3 AM CT



**Wind GUSTS:
5 AM CT**



**High Temps
Wednesday**

Houston Pilots: THU. 12/26/2024

Forecast Discussion

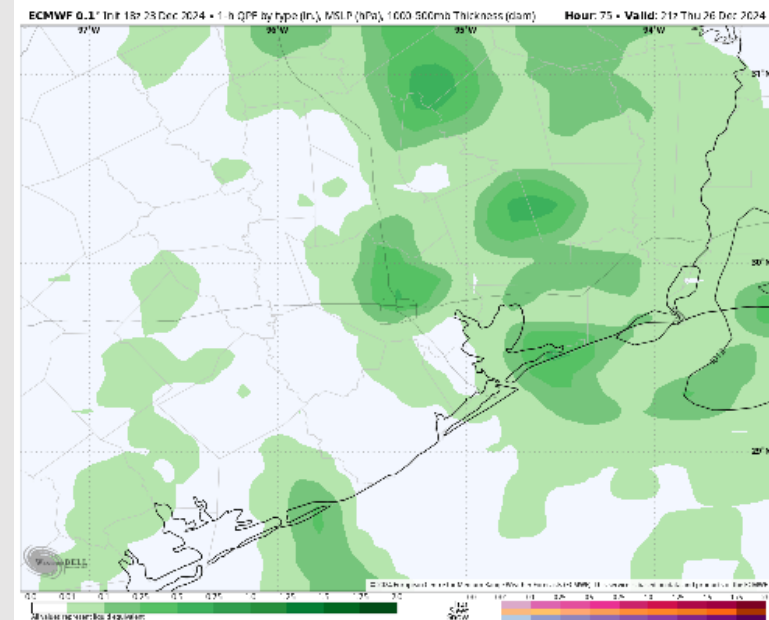
Precip: Isolated (20%) showers in play for all Stations between 7 AM and 12 PM before coverage becomes scattered (60%) throughout the PM.

Wind: Winds direction will 'wobble' throughout the day, with a general tendency to be out of the S. **N of Morgan's Point:** Winds will be at 4 – 9 kts throughout the day Thursday. **S of Morgan's Point:** Winds will be at 4 – 9 kts through 10 AM, increasing to 8– 13 kts for the rest of the day. **A few gusts of 15 – 20 kts will be possible for all Stations after 10 AM.**

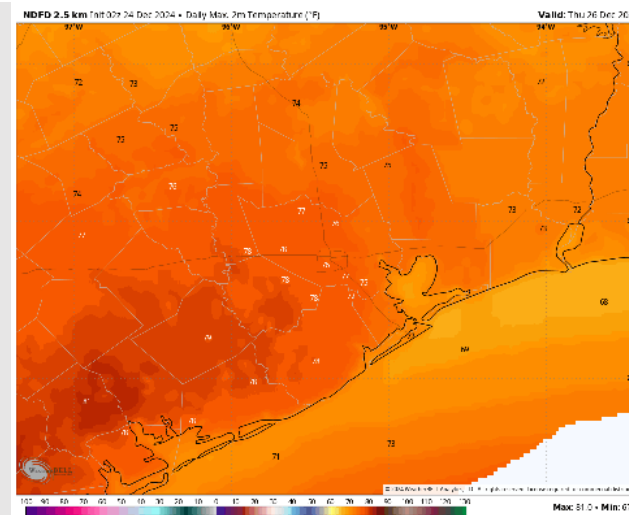
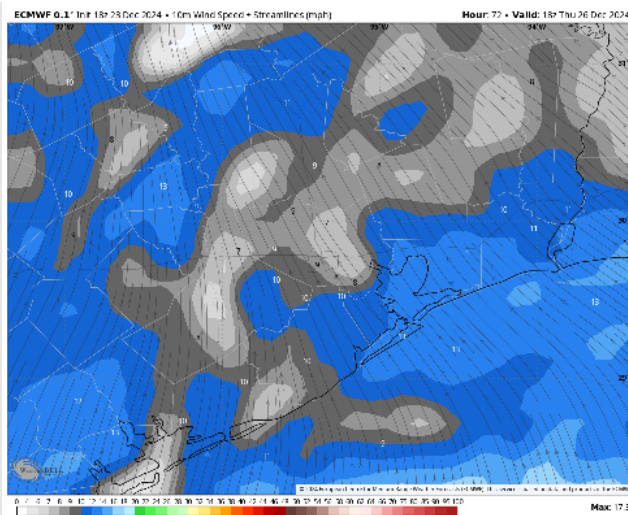
High Temps: **N of Morgan's Point:** Upper 70s F. **S of Morgan's Point:** Upper 60s – Near 70 F.

Visibility: No fog concerns favored for Thursday however visibilities may be reduced to 2-4 miles under downpours.

Precip Image: 3 PM CT



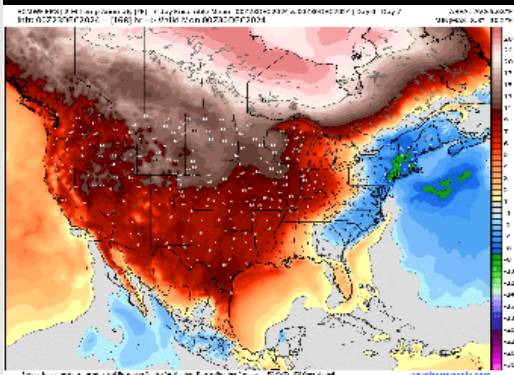
Wind Speed:
12 PM CT



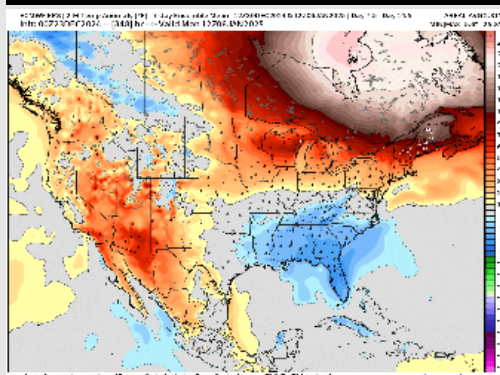
High Temps
Thursday

Houston Pilots: 12/24/24

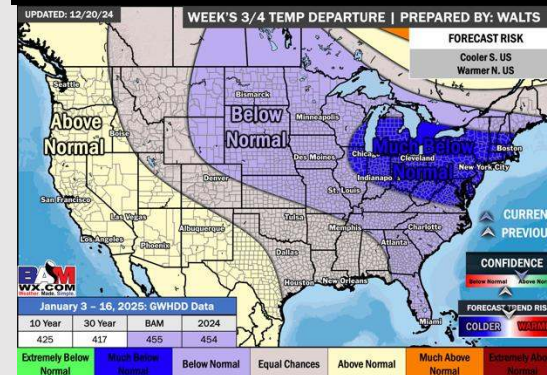
Next 7 Day Temperature Departure



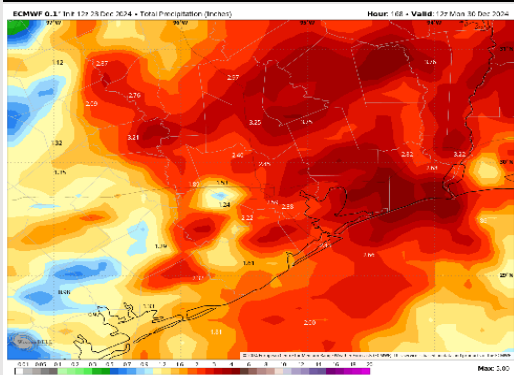
8-14 Day Temperature Departure



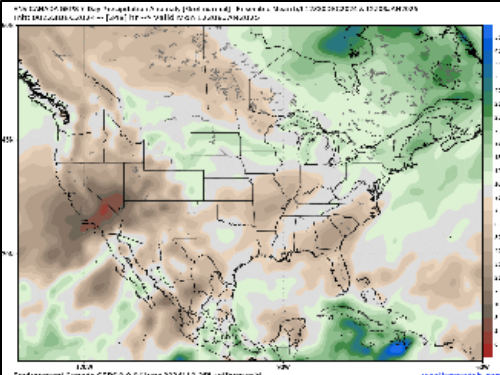
15-30 Day Temperature Departure



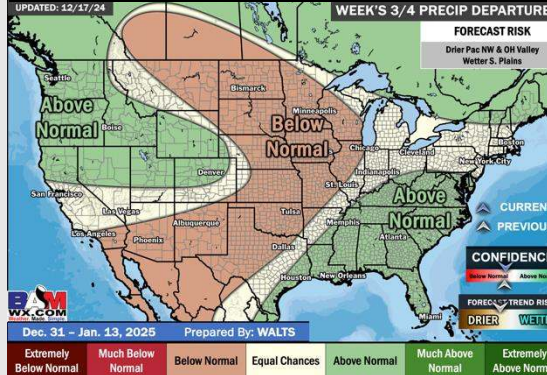
Next 7 Day Total Precipitation



8-14 Day % of Average Precip.



15-30 Day % of Average Precip.



- Temps are expected to be much above normal for the week 1 timeframe. Expecting rain chances to pickup mid-week with 2 - 3" favored in total by the end of the period.
- Near to slightly below normal temperatures and below normal rainfall are expected for week 2.
- Near normal temperatures and above normal precipitation chances are expected for the weeks ¾ timeframe.