

# Houston Pilots Forecast Package



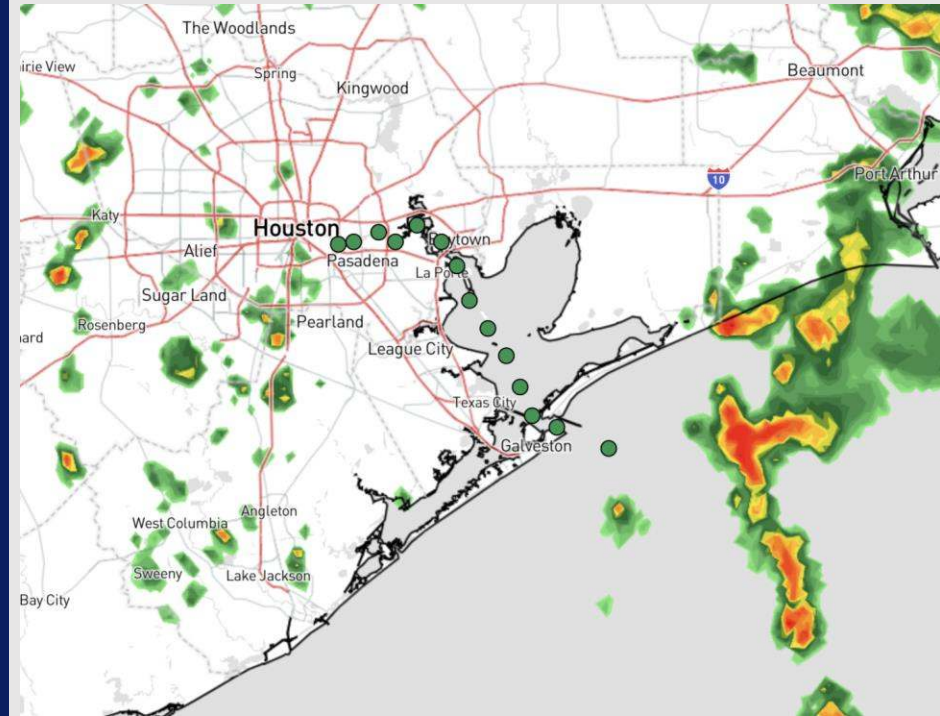
Updated: 1:00 PM CT

Tuesday, December 24, 2024

Forecaster: Alyssa Elliott

## Weather Headlines

- Gusts of nearing 30 kts are favored at the Boarding Station this PM.
- Watching for a risk for slightly reduced visibility ahead of front. See Vis slide.
- Sustained winds out of the SE causing wave heights of around 3 ft at the Boarding Station.
- Scattered showers will continue today with **strong storm threats with gusts of 40+ kts possible WED AM. See Wednesday forecast slide.**



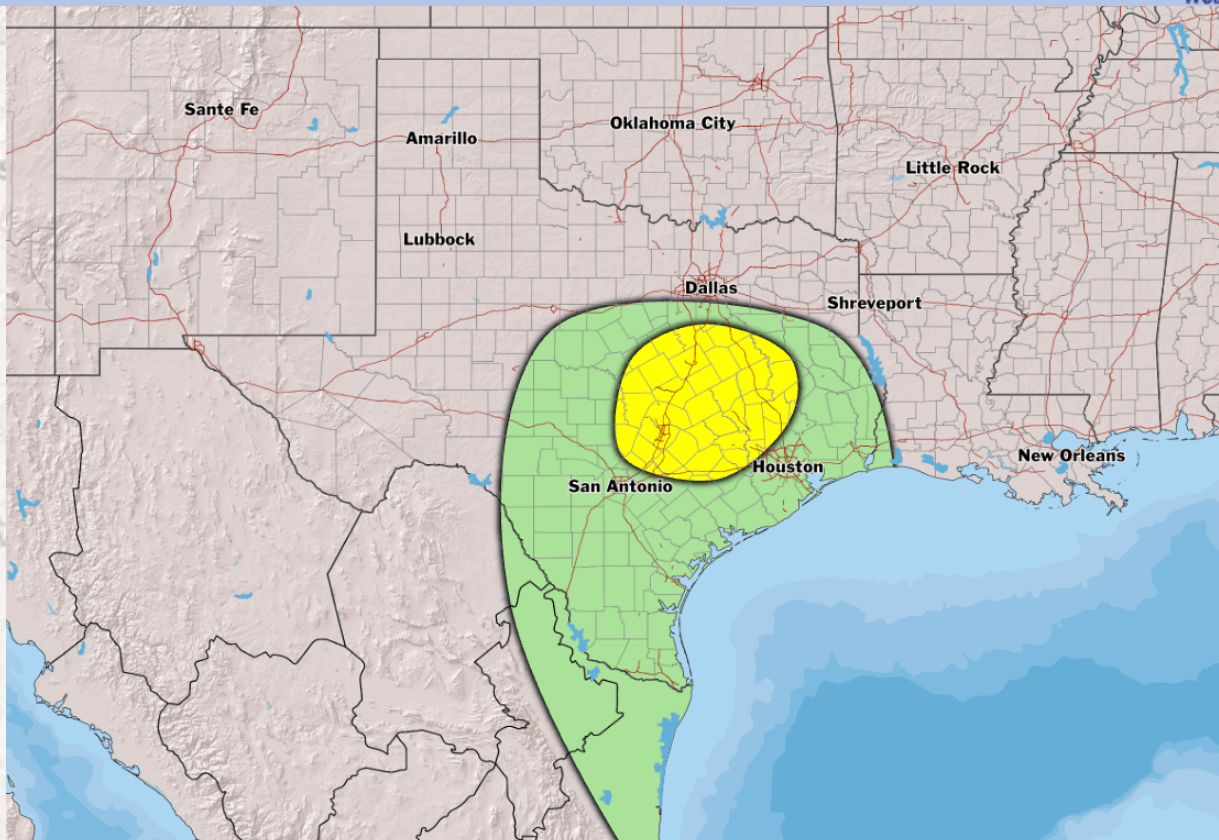
**Current Radar: 12:45 PM CT**

As always, please do not hesitate to reach out to us with any forecast questions at **(317)-560-8122**. Press 1 for forecast questions.

You can also access real-time forecast updates and 24/7 meteorological chat assistance on your **Clarity** app. Click [here](#) for login assistance.



# Severe Risk Map for Christmas



<b>RISK</b>	<b>LOW-END</b>	<b>POSSIBLE</b>	<b>LIKELY</b>	<b>HIGHLY LIKELY</b>
-------------	----------------	-----------------	---------------	----------------------

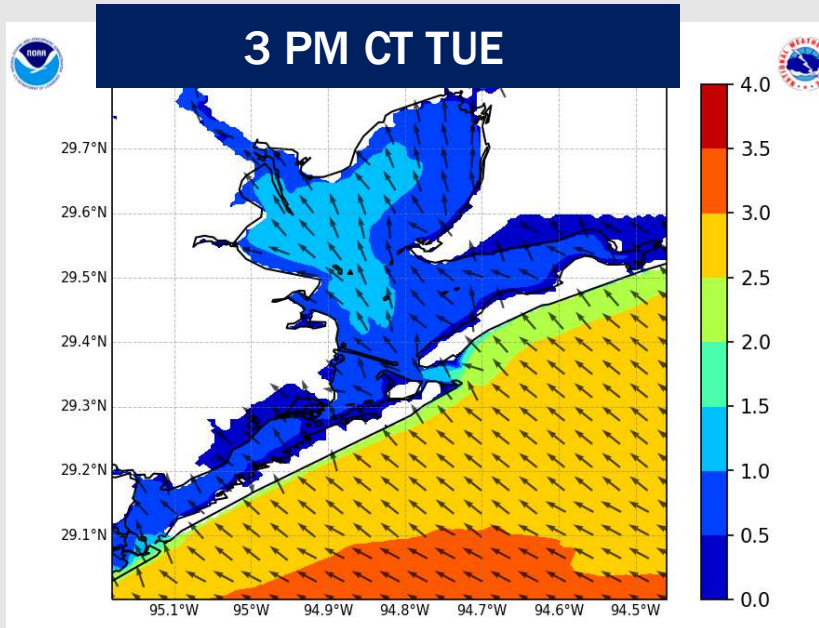
**TIMING: TUE 6 PM (12/24) – WED 5 AM (12/25)**

## FORECAST NOTES:

- ✓ **Yellow:** A few severe storms. Localized Large Hail and Wind Gusts of 55+ MPH are possible as storms become more organized.
- ✓ **Green:** Wind gusts 45-60 MPH possible but will be fairly isolated in nature.

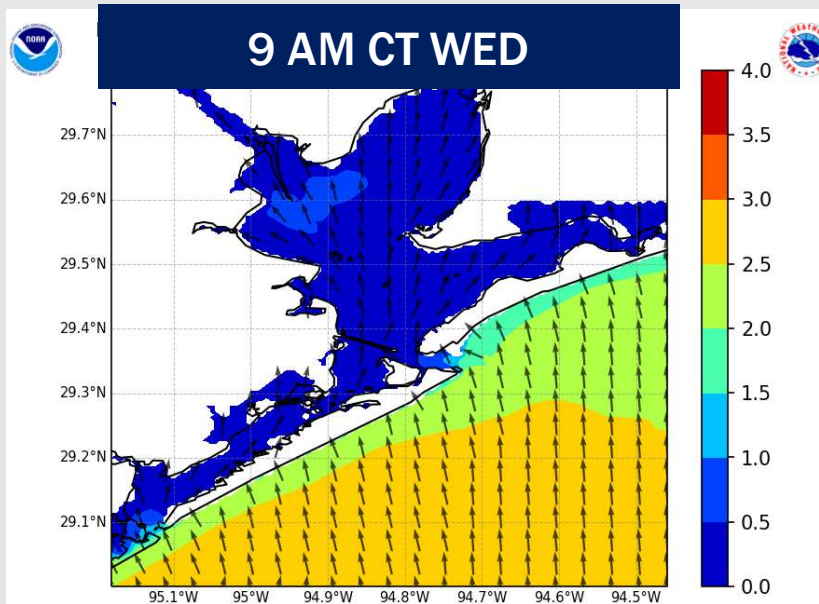


# Wave Height Forecast Update



Slightly elevated, sustained winds out of the S/SE are causing wave heights of 2.5 – 3 ft at the Boarding Station.

Stations N of the Boarding Station are seeing wave heights of 2.5 or less.



Expecting wave heights to be less than 2.5 ft for the Boarding Station by 3 AM WED and under 2 ft by 6 PM WED.

# Reduced Visibility Forecast



TIMEFRAME DISCUSSED	THREAT
9 PM TUE – 3 AM WED	Low

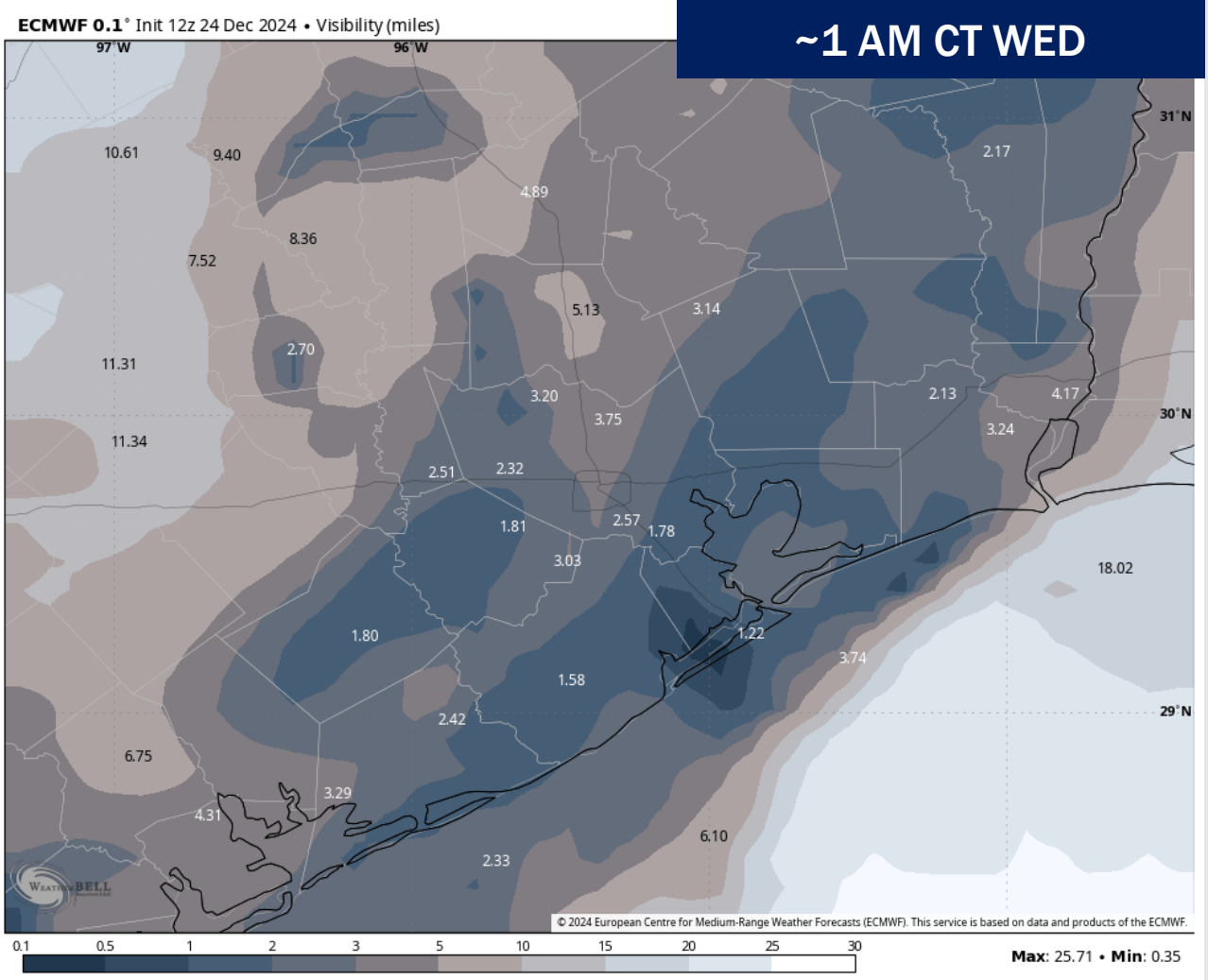
### Forecast Confidence

Above Normal Below Normal

Watching for a risk of reduced visibility to 1 – 3 miles late this PM into WED AM ahead of front.

The main timeframe to watch for this risk is as early as 9 PM this evening until the front works in around 3 AM.

Confidence is overall low for this threat.



# Houston Pilots Extended Range Visibility Report



## Friday 12/27/24

Fog is not favored for Friday, but visibility may be reduced under downpours.



## Saturday 12/28/24

Visibility may be reduced to 2-4 miles under downpours Saturday AM. Monitoring sea fog risks for Stations S of 63/64 Saturday evening.



## Sunday 12/29/24

Fog is not favored for Sunday.



## Chance for Fog

Friday AM	Unlikely
Friday PM	Unlikely
Saturday AM	Unlikely
Saturday PM	Medium
Sunday AM	Unlikely
Sunday PM	Unlikely

# Houston Pilots Visibility Chart (miles)



## Forecast Confidence



Visibility	Tue 1 pm	Tue 2 pm	Tue 3 pm	Tue 4 pm	Tue 5 pm	Tue 6 pm	Tue 7 pm	Tue 8 pm	Tue 9 pm	Tue 10 pm	Tue 11 pm	Wed 12 am	Wed 1 am	Wed 2 am	Wed 3 am	Wed 4 am	Wed 5 am	Wed 6 am	Wed 7 am	Wed 8 am	Wed 9 am	Wed 10 am	Wed 11 am	Wed 12 pm
Houston Pilots N - 610 Bridge	10	10	10	10	10	10	10	10	10	10	10	9	7.9	7.9	6.9	5.9	4.9	4.9	3.9	2.5	1.6	3.9	4.9	6.9
Houston Pilots M - Kinder 1	10	10	10	10	10	10	10	10	10	10	10	9	7.9	7.9	6.9	5.9	4.9	4.9	3.9	2.5	1.6	3.9	4.9	6.9
Houston Pilots L - Greens Bayou	10	10	10	10	10	10	10	10	10	10	10	9	7.9	7.9	6.9	5.9	4.9	4.9	3.9	2.5	1.6	3.9	4.9	6.9
Houston Pilots K - Shell Crude	10	10	10	10	10	10	10	10	10	10	10	9	7.9	7.9	6.9	5.9	4.9	4.9	3.9	2.9	1.6	3.9	4.9	6.9
Houston Pilots J - Lynchburg Ferries	10	10	10	10	10	10	10	10	10	10	10	10	7.9	7.9	6.9	5.9	4.9	4.9	3.9	2.5	1.6	3.9	4.9	6.9
Houston Pilots I - Exxon 3	10	10	10	10	10	10	10	10	10	10	10	10	7.9	7.9	6.9	5.9	4.9	4.9	3.9	2.9	1.6	3.9	4.9	6.9
Houston Pilots H - Morgans Point	10	10	10	10	10	10	10	10	10	10	10	10	7.9	7.9	6.9	5.9	4.9	4.9	3.9	2.9	1.6	3.9	4.9	6.9
Houston Pilots G - 75/76	10	10	10	10	10	10	10	10	10	10	10	10	9	7.9	7.9	6.9	6.9	4.9	4.9	3.9	2.9	3.9	4.9	8
Houston Pilots F - 63/64	10	10	10	10	10	10	10	10	10	10	10	10	9	9	7.9	6.9	6.9	4.9	4.9	3.9	2.9	3.9	4.9	8
Houston Pilots E - 51/52	10	10	10	10	10	10	10	10	10	10	10	10	10	9	9	7.9	6.9	5.9	5.9	4.9	2.9	3.9	4.9	8
Houston Pilots D - 37/38	10	10	10	10	10	10	10	10	10	10	10	10	10	9	9	7.9	6.9	6.9	5.9	4.9	2.9	4.9	5.9	8
Houston Pilots C - 25/26	10	10	10	10	10	10	10	10	10	10	10	10	10	10	10	9	6.9	6.9	5.9	4.9	3.9	4.9	5.9	8
Houston Pilots B - 11/12	10	10	10	10	10	10	10	10	10	10	10	10	10	10	10	9	7.9	6.9	6.9	4.9	3.9	4.9	5.9	8
Houston Pilots A - 1 & 2 Bravo	10	10	10	10	10	10	10	10	10	10	10	10	10	10	10	10	9	8	6.9	6.9	4.9	4.9	5.9	8

**NOTE: This is automated data that may/may not agree with the official BAM thinking that's found on the daily slides or special visibility report slides. This data should be used as a guide only**



# Houston Pilots Wind Chart



## Forecast Confidence



Sustained wind 10 Knots  
Gusts 15 Knots  
Wind from the SE

## Example



Wind	Tue 1 pm	Tue 2 pm	Tue 3 pm	Tue 4 pm	Tue 5 pm	Tue 6 pm	Tue 7 pm	Tue 8 pm	Tue 9 pm	Tue 10 pm	Tue 11 pm	Wed 12 am	Wed 1 am	Wed 2 am	Wed 3 am	Wed 4 am	Wed 5 am	Wed 6 am	Wed 7 am	Wed 8 am	Wed 9 am	Wed 10 am	Wed 11 am	Wed 12 pm	
Houston Pilots N - 610 Bridge	10 20 ↖	10 21 ↖	10 21 ↖	10 22 ↖	10 21 ↖	10 20 ↖	9 18 ↖	8 17 ↖	8 17 ↖	8 17 ↖	8 16 ↖	7 15 ↖	7 15 ↖	6 15 ↖	6 14 ↖	6 13 ↓	6 13 ↓	6 12 ↓	5 10 ←	5 10 ←	5 10 ←	6 10 ←	6 10 ←	6 13 ↖	
Houston Pilots M - Kinder 1	10 20 ↖	10 21 ↖	10 22 ↖	10 22 ↖	10 21 ↖	10 20 ↖	9 18 ↖	8 17 ↖	8 17 ↖	8 17 ↖	8 16 ↖	7 15 ↖	7 15 ↖	6 15 ↖	6 14 ↖	6 13 ↓	6 13 ↓	6 12 ↓	5 10 ←	5 10 ←	5 10 ←	6 10 ←	6 10 ←	6 13 ↖	
Houston Pilots L - Greens Bayou	10 21 ↖	10 22 ↖	10 22 ↖	10 22 ↖	10 21 ↖	10 20 ↖	9 18 ↖	9 17 ↖	8 17 ↖	8 17 ↖	8 16 ↖	7 15 ↖	7 15 ↖	6 15 ↖	6 14 ↖	6 13 ↓	6 13 ↓	6 12 ↓	5 10 ←	5 10 ←	5 10 ←	6 10 ←	6 12 ↖	6 13 ↖	
Houston Pilots K - Shell Crude	10 21 ↖	10 22 ↖	12 22 ↖	12 22 ↖	10 21 ↖	10 20 ↖	9 18 ↖	8 17 ↖	8 17 ↖	8 17 ↖	8 16 ↖	7 15 ↖	7 15 ↖	6 15 ↖	6 14 ↖	6 14 ↓	6 13 ↓	6 12 ↓	5 10 ←	5 10 ←	5 10 ←	6 10 ←	6 12 ↖	6 13 ↖	
Houston Pilots J - Lynchburg Ferries	12 21 ↖	12 22 ↖	12 22 ↖	12 22 ↖	12 22 ↖	10 20 ↖	9 18 ↖	8 17 ↖	8 17 ↖	8 17 ↖	8 16 ↖	7 15 ↖	6 15 ↖	6 14 ↖	6 14 ↖	6 13 ↓	6 13 ↓	6 12 ↓	5 10 ←	5 10 ←	5 10 ←	6 10 ←	6 12 ↖	6 13 ↖	
Houston Pilots I - Exxon 3	13 21 ↖	13 22 ↖	13 22 ↖	14 23 ↖	14 22 ↖	14 20 ↖	13 20 ↖	13 18 ↖	13 20 ↖	13 18 ↖	13 18 ↖	12 17 ↖	10 16 ↖	10 15 ↖	10 15 ↖	9 15 ↖	9 14 ↖	8 14 ↖	8 13 ↖	8 12 ↖	8 12 ↖	7 12 ↖	7 12 ↖	8 13 ↖	
Houston Pilots H - Morgans Point	13 21 ↖	13 22 ↖	13 22 ↖	13 22 ↖	13 22 ↖	13 20 ↖	13 20 ↖	13 18 ↖	13 18 ↖	13 18 ↖	13 17 ↖	12 16 ↖	10 15 ↖	10 15 ↖	9 15 ↖	9 15 ↓	8 14 ↓	8 13 ↓	8 13 ←	8 12 ←	8 12 ←	7 12 ←	7 12 ←	8 13 ↖	
Houston Pilots G - 75/76	13 21 ↖	13 22 ↖	14 22 ↖	14 23 ↖	14 22 ↖	14 21 ↖	13 20 ↖	13 20 ↖	14 20 ↖	14 20 ↖	13 20 ↖	13 18 ↖	12 17 ↖	10 16 ↖	10 16 ↖	10 16 ↖	10 15 ↓	10 15 ↓	9 14 ↖	9 14 ↖	8 13 ↖	8 13 ↖	8 13 ↖	8 13 ↖	
Houston Pilots F - 63/64	13 21 ↖	13 22 ↖	13 22 ↖	14 23 ↖	14 22 ↖	13 20 ↖	13 20 ↖	13 18 ↖	13 20 ↖	14 20 ↖	13 18 ↖	13 17 ↖	12 16 ↖	10 16 ↖	10 16 ↖	10 16 ↖	10 15 ↓	10 15 ↓	9 14 ↖	9 14 ↖	8 13 ↖	8 13 ↖	8 13 ↖	8 13 ↖	
Houston Pilots E - 51/52	13 21 ↖	13 21 ↖	13 21 ↖	13 21 ↖	13 21 ↖	13 20 ↖	13 18 ↖	13 18 ↖	13 18 ↖	13 20 ↖	13 18 ↖	12 17 ↖	10 16 ↖	10 15 ↖	10 15 ↖	10 15 ↖	9 15 ↖	9 15 ↖	9 14 ↖	9 14 ↖	9 13 ↖	8 13 ↖	8 13 ↖	8 13 ↖	
Houston Pilots D - 37/38	13 21 ↖	13 21 ↖	13 21 ↖	13 21 ↖	13 21 ↖	13 20 ↖	13 18 ↖	13 18 ↖	13 18 ↖	13 18 ↖	13 18 ↖	12 17 ↖	10 16 ↖	10 15 ↖	10 15 ↖	9 15 ↖	9 15 ↖	9 14 ↖	9 14 ↖	8 13 ↖	8 13 ↖	8 13 ↖	8 13 ↖	8 13 ↖	
Houston Pilots C - 25/26	13 20 ↖	13 21 ↖	13 20 ↖	13 20 ↖	13 20 ↖	12 20 ↖	12 18 ↖	12 17 ↖	12 18 ↖	13 18 ↖	12 18 ↖	10 17 ↖	10 16 ↖	10 15 ↖	9 15 ↖	9 15 ↖	9 15 ↖	9 14 ↖	9 15 ↓	8 14 ↖	8 13 ↖	8 13 ↖	8 13 ↖	8 13 ↖	
Houston Pilots B - 11/12	13 20 ↖	12 20 ↖	12 20 ↖	12 18 ↖	12 18 ↖	10 18 ↖	10 17 ↖	10 17 ↖	10 18 ↖	10 18 ↖	10 18 ↖	10 17 ↖	10 16 ↖	9 15 ↖	9 15 ↖	8 15 ↖	8 15 ↖	8 14 ↖	8 14 ↓	8 14 ↓	8 13 ↖	8 13 ↖	8 13 ↖	8 13 ↖	
Houston Pilots A - 1 & 2 Bravo	13 20 ↖	13 20 ↖	13 20 ↖	13 20 ↖	13 20 ↖	13 20 ↖	13 20 ↖	13 18 ↖	13 13 ↖	13 13 ↖	13 13 ↖	13 18 ↖	13 17 ↖	12 17 ↖	10 16 ↖	10 16 ↖	10 16 ↖	10 16 ↖	10 16 ↖	10 16 ↖	10 15 ↓	9 15 ↖	9 14 ↖	9 14 ↖	8 13 ↖

**NOTE: This is automated data that may/may not agree with the official BAM thinking that's found on the daily slides. This data should be used as a guide only.**

# Houston Pilots: TUE. 12/24/2024



## Forecast Discussion

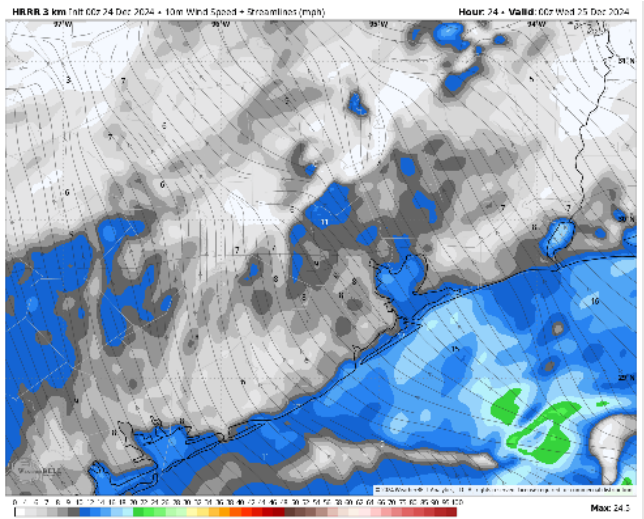
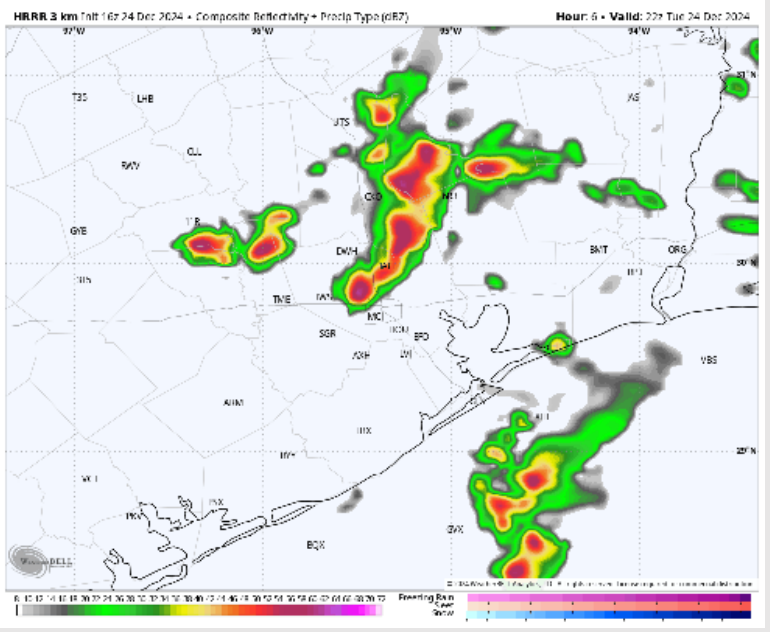
**Precip:** Scattered (40%) showers in play for all Stations until 7 PM.

**Wind:** Winds will be out of the S/SE throughout the PM, becoming variable after 10 PM. **N of Morgan's Point:** Winds will be at 8 – 13 kts throughout the day. **S of Morgan's Point:** Winds will be at 18 - 23 kts through today. **A few gusts of 20 – 25 kts will be possible for all stations through 9 PM. Gusts of of near 30 kts possible for the Boarding Station.**

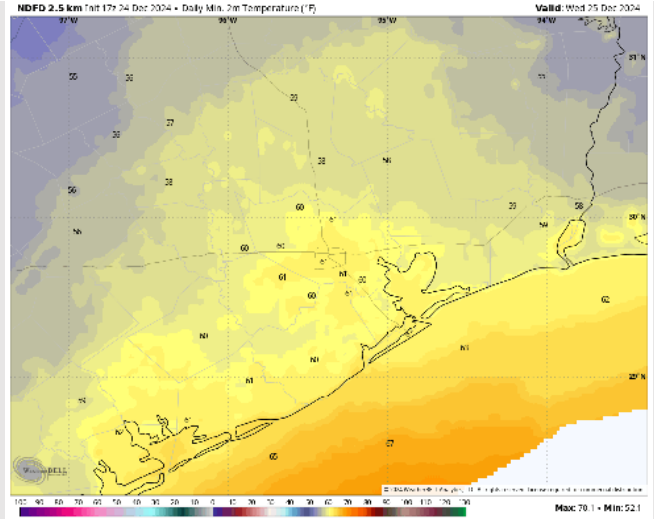
**Low Temps:** **N of Morgan's Point:** Near 60 F. **S of Morgan's Point:** Low 60s F.

**Visibility:** Patchy fog risk ahead of front, starting as early as 9 PM.

## Precip Image: 4 PM CT



Wind Speed  
6 PM CT



Low Temps  
WED AM



## Forecast Discussion

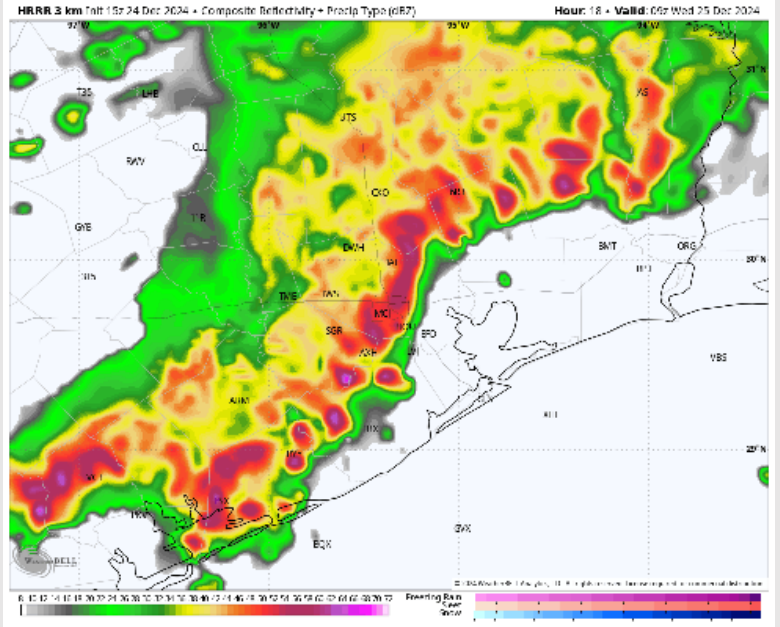
**Precip:** Favoring strong to potentially severe storms arrive around 3 AM WED lasting through 10 AM. Lightning, heavy downpours, gusty winds and isolated pockets of hail will all be a risk during peak storms between 3 – 5 AM.

**Wind:** Winds will be out of the SE through 3 AM before storms cause winds to become variable with a tendency out of the N. After 10 AM, winds shifts out of the SE and continue this direction for the rest of the day. **N of Morgan's Point:** Non-storm winds will be at 3 - 8 kts throughout the day. **S of Morgan's Point:** Non-storm winds will be 8 - 13 kts throughout the day. **Wind gusts within the strongest storms early WED AM may reach 40 – 45 kts.**

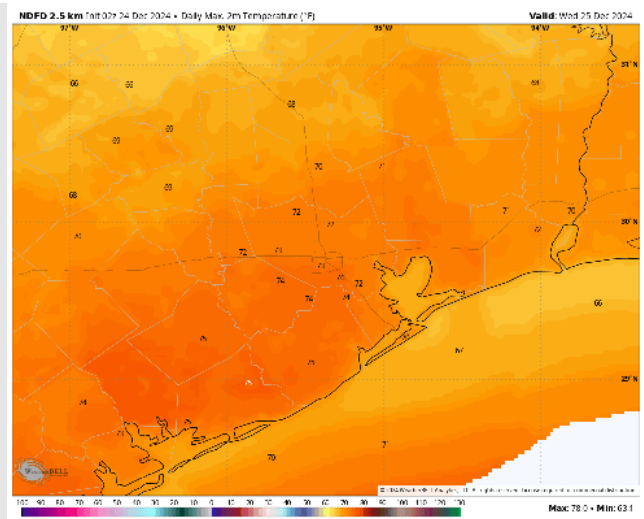
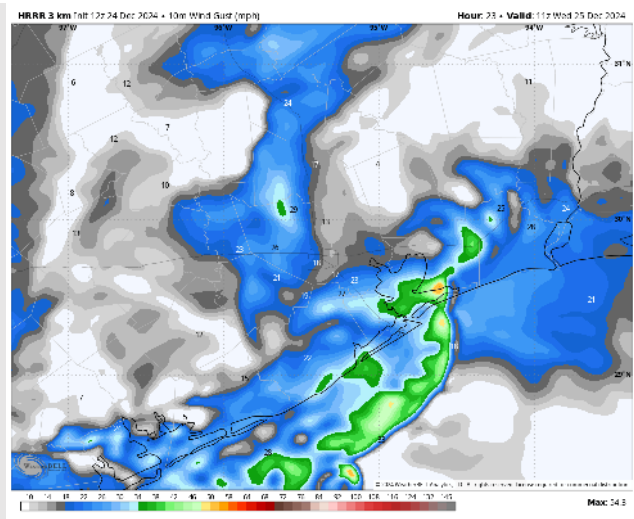
**High Temps:** **N of Morgan's Point:** Mid 70s F. **S of Morgan's Point:** Upper 60s – Near 70 F.

**Visibility:** Patchy fog reducing visibility to 1 – 3 miles may be briefly present ahead of the front WED AM, however storms will rid fog concerns and any visibility issues will be caused by heavy downpours. **See visibility slide.**

## Precip Image: 3 AM CT



**Wind GUSTS:  
5 AM CT**



**High Temps  
Wednesday**

# Houston Pilots: THU. 12/26/2024



## Forecast Discussion

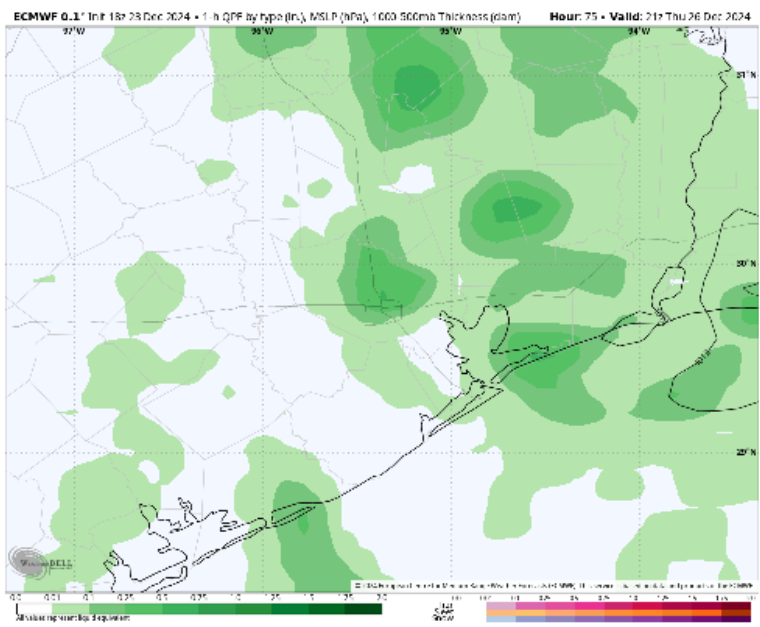
**Precip:** Isolated (20%) showers in play for all Stations between 7 AM and 12 PM before coverage becomes scattered (60%) throughout the PM.

**Wind:** Winds direction will 'wobble' throughout the day, with a general tendency to be out of the S. **N of Morgan's Point:** Winds will be at 4 – 9 kts throughout the day Thursday. **S of Morgan's Point:** Winds will be at 4 – 9 kts through 10 AM, increasing to 8– 13 kts for the rest of the day. **A few gusts of 15 – 20 kts will be possible for all Stations after 10 AM.**

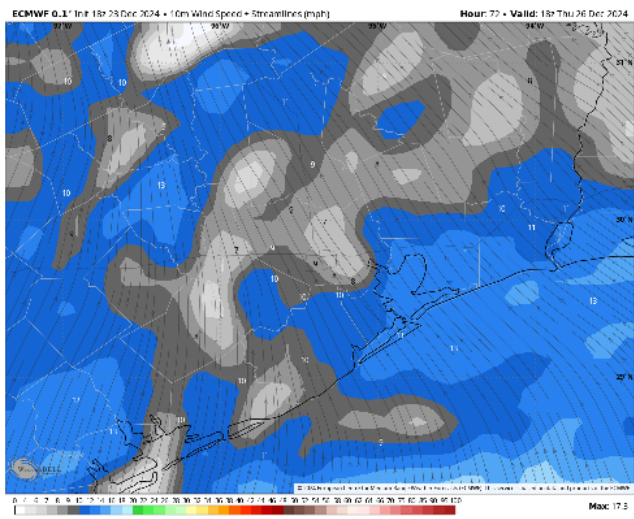
**High Temps:** **N of Morgan's Point:** Upper 70s F. **S of Morgan's Point:** Upper 60s – Near 70 F.

**Visibility:** No fog concerns favored for Thursday however visibilities may be reduced to 2-4 miles under downpours.

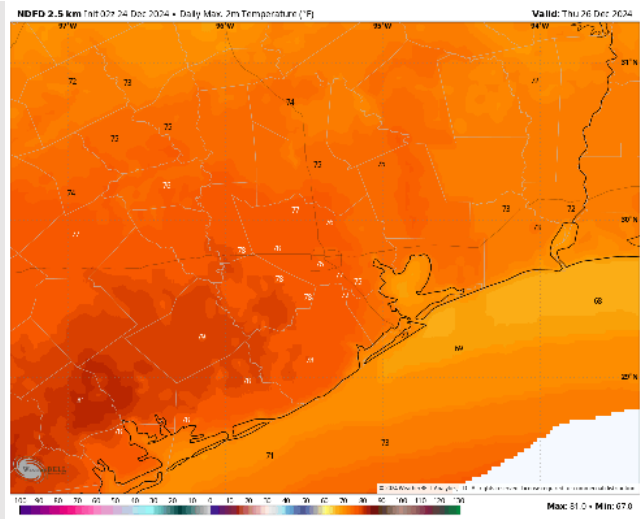
## Precip Image: 3 PM CT



Wind Speed:  
12 PM CT



High Temps  
Thursday

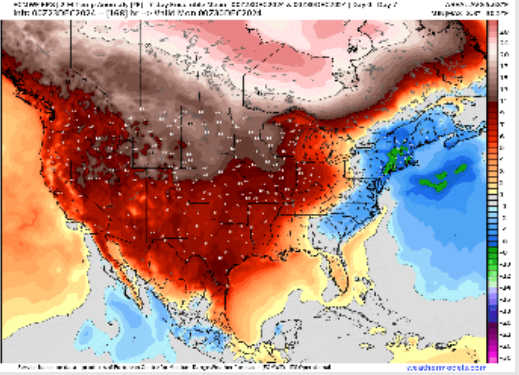




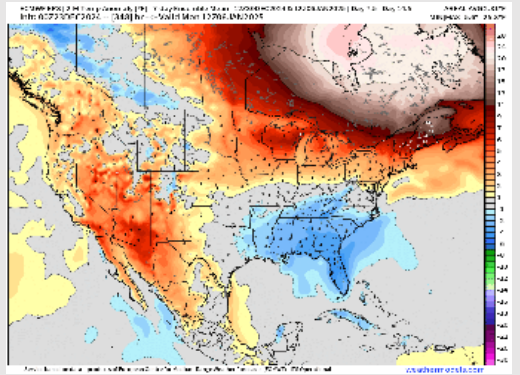
# Houston Pilots: 12/24/24



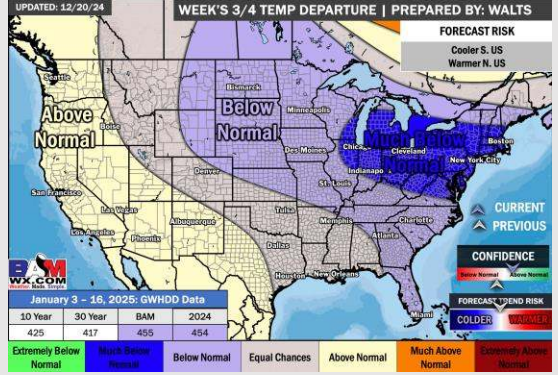
**Next 7 Day Temperature Departure**



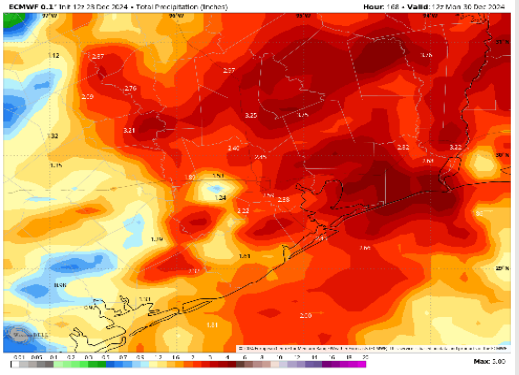
**8-14 Day Temperature Departure**



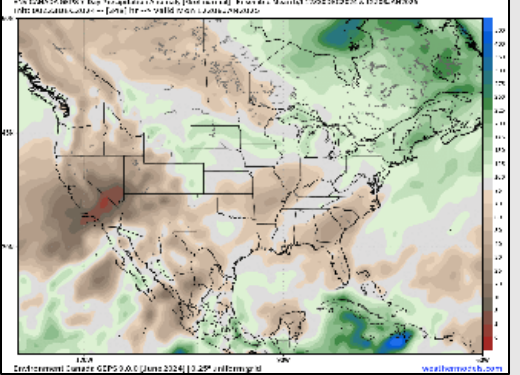
**15-30 Day Temperature Departure**



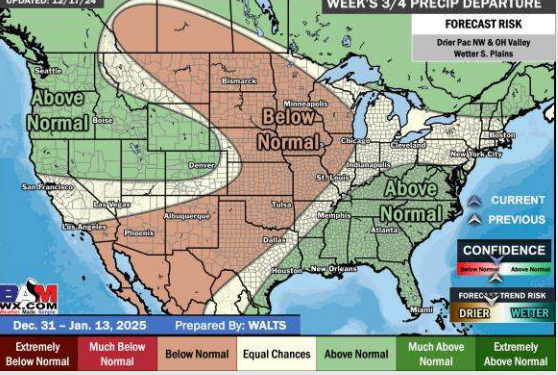
**Next 7 Day Total Precipitation**



**8-14 Day % of Average Precip.**



**15-30 Day % of Average Precip.**



- Temps are expected to be much above normal for the week 1 timeframe. Expecting rain chances to pickup mid-week with 2 - 3" favored in total by the end of the period.
- Near to slightly below normal temperatures and below normal rainfall are expected for week 2.
- Near normal temperatures and above normal precipitation chances are expected for the weeks ¾ timeframe.