

Houston Pilots Forecast Package



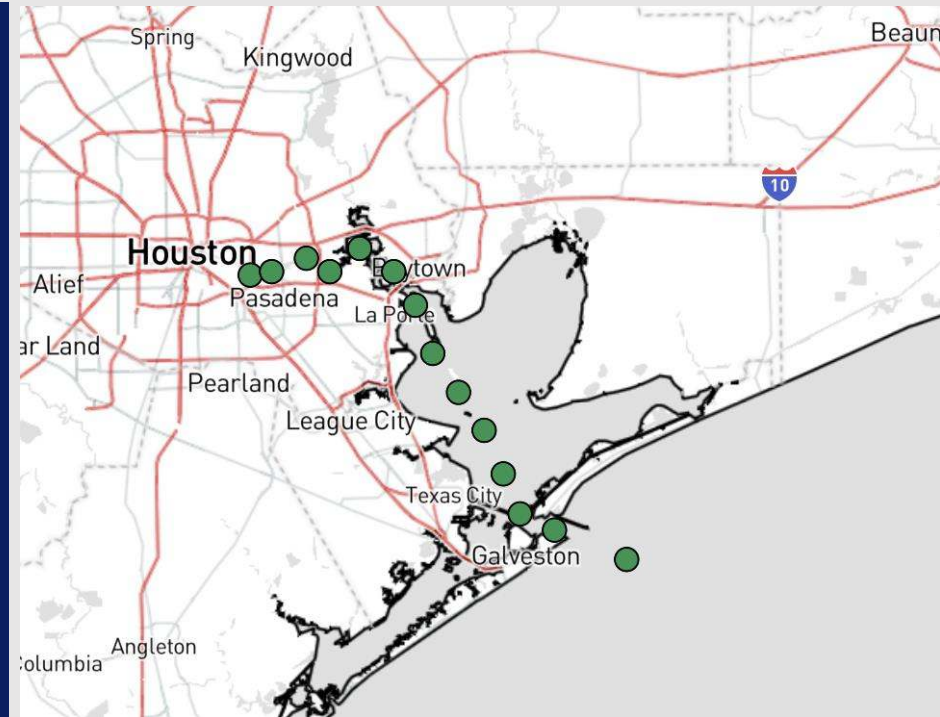
Updated: 11:30 PM CT

Tuesday, December 24, 2024

Forecaster: Tyler Riggles

Weather Headlines

- Gusts of 15-20 kts will be possible in an infrequent manner over the next 72 hours.
- Patchy pockets of fog will be possible in between showers this AM. **See Fog Timing Slide for additional details.**
- Rain showers are expected to be a frequent occurrence through the end of the week.

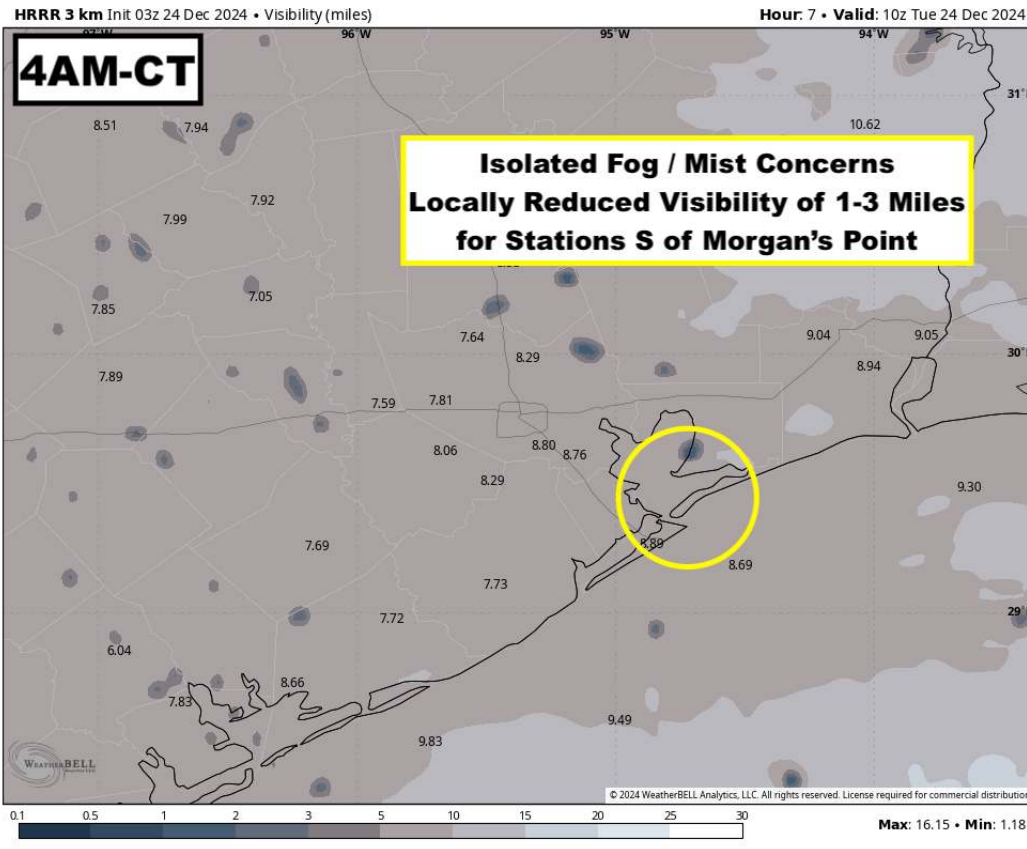


Current Radar: 11:20 PM CT

As always, please do not hesitate to reach out to us with any forecast questions at **(317)-560-8122**. Press 1 for forecast questions.

You can also access real-time forecast updates and 24/7 meteorological chat assistance on your **Clarity** app. Click [here](#) for login assistance.





Patchy pockets of fog/mist will be able to develop in the gaps between showers S of Morgan's Point and will be able to reduce visibilities to 1-3 miles at times through 12 PM.

Although model data is struggling to see this risk, simulated fog gif to the left best illustrates when and where this risk occurs.

As always, please do not hesitate to reach out to us with any forecast questions via the chat option on Clarity or our on-call number, **(317)-560-8122** press 1 for forecast questions.

Houston Pilots Extended Range Visibility Report



Friday 12/27/24

Fog is not favored for Friday, but visibility may be reduced under downpours.



Saturday 12/28/24

Visibility may be reduced to 2-4 miles under downpours Saturday AM. Monitoring sea fog risks for Stations S of 63/64 Saturday evening.



Sunday 12/29/24

Fog is not favored for Sunday.



Chance for Fog

Friday AM	Unlikely
Friday PM	Unlikely
Saturday AM	Unlikely
Saturday PM	Medium
Sunday AM	Unlikely
Sunday PM	Unlikely

Houston Pilots Visibility Chart (miles)



Forecast Confidence



Visibility	Tue 12 am	Tue 1 am	Tue 2 am	Tue 3 am	Tue 4 am	Tue 5 am	Tue 6 am	Tue 7 am	Tue 8 am	Tue 9 am	Tue 10 am	Tue 11 am	Tue 12 pm	Tue 1 pm	Tue 2 pm	Tue 3 pm	Tue 4 pm	Tue 5 pm	Tue 6 pm	Tue 7 pm	Tue 8 pm	Tue 9 pm	Tue 10 pm	Tue 11 pm
Houston Pilots N - 610 Bridge	10	10	10	10	10	10	10	10	10	10	10	10	10	10	10	10	10	10	10	10	10	10	10	10
Houston Pilots M - Kinder 1	10	10	10	10	10	10	10	10	10	10	10	10	10	10	10	10	10	10	10	10	10	10	10	10
Houston Pilots L - Greens Bayou	10	10	10	10	10	10	10	10	10	10	10	10	10	10	10	10	10	10	10	10	10	10	10	10
Houston Pilots K - Shell Crude	10	10	10	10	10	10	10	10	10	10	10	10	10	10	10	10	10	10	10	10	10	10	10	10
Houston Pilots J - Lynchburg Ferries	10	10	10	10	10	10	10	10	10	10	10	10	10	10	10	10	10	10	10	10	10	10	10	10
Houston Pilots I - Exxon 3	10	10	10	10	10	10	10	10	10	10	10	10	10	10	10	10	10	10	10	10	10	10	10	10
Houston Pilots H - Morgans Point	10	10	10	10	10	10	10	10	10	10	10	10	10	10	10	10	10	10	10	10	10	10	10	10
Houston Pilots G - 75/76	10	10	10	10	10	10	10	10	10	10	10	10	10	10	10	10	10	10	10	10	10	10	10	8
Houston Pilots F - 63/64	10	10	10	10	10	10	10	10	10	10	10	10	10	10	10	10	10	10	10	10	10	10	10	8
Houston Pilots E - 51/52	10	10	10	10	10	10	10	10	10	10	10	10	10	10	10	10	10	10	10	10	10	10	10	8
Houston Pilots D - 37/38	10	10	10	10	10	10	10	10	10	10	10	10	10	10	10	10	10	10	10	10	10	10	10	8
Houston Pilots C - 25/26	10	10	10	10	10	10	10	10	10	10	10	10	10	10	10	10	10	10	10	10	10	10	10	8
Houston Pilots B - 11/12	10	10	10	10	10	10	10	10	10	10	10	10	10	10	10	10	10	10	10	10	10	10	10	8
Houston Pilots A - 1 & 2 Bravo	10	10	10	10	10	10	10	10	10	10	10	10	10	10	10	10	10	10	10	10	10	10	10	8

NOTE: This is automated data that may/may not agree with the official BAM thinking that's found on the daily slides or special visibility report slides. This data should be used as a guide only

Houston Pilots Wind Chart



Forecast Confidence



Sustained wind 10 Knots
Gusts 15 Knots
Wind from the SE

Example
10
15
↖

Wind	Tue 12 am	Tue 1 am	Tue 2 am	Tue 3 am	Tue 4 am	Tue 5 am	Tue 6 am	Tue 7 am	Tue 8 am	Tue 9 am	Tue 10 am	Tue 11 am	Tue 12 pm	Tue 1 pm	Tue 2 pm	Tue 3 pm	Tue 4 pm	Tue 5 pm	Tue 6 pm	Tue 7 pm	Tue 8 pm	Tue 9 pm	Tue 10 pm	Tue 11 pm
Houston Pilots N - 610 Bridge	9 18 ↖	8 17 ↖	8 17 ↖	8 16 ↖	7 15 ↖	7 15 ↖	6 14 ↖	6 14 ↖	7 15 ↖	7 15 ↖	8 16 ↖	9 18 ↖	10 20 ↖	10 21 ↖	10 22 ↖	12 23 ↖	12 23 ↖	10 22 ↖	10 20 ↖	9 20 ↖	9 18 ↖	9 18 ↖	8 17 ↖	8 17 ↖
Houston Pilots M - Kinder 1	9 18 ↖	8 17 ↖	8 17 ↖	8 16 ↖	7 15 ↖	7 15 ↖	6 14 ↖	6 14 ↖	7 15 ↖	7 15 ↖	8 16 ↖	9 18 ↖	10 20 ↖	10 21 ↖	12 22 ↖	12 23 ↖	12 23 ↖	10 22 ↖	10 20 ↖	9 18 ↖	9 18 ↖	9 18 ↖	8 17 ↖	8 17 ↖
Houston Pilots L - Greens Bayou	9 18 ↖	8 17 ↖	8 17 ↖	8 16 ↖	7 16 ↖	7 15 ↖	6 14 ↖	6 14 ↖	7 15 ↖	8 16 ↖	8 16 ↖	9 18 ↖	10 20 ↖	12 21 ↖	12 22 ↖	12 23 ↖	12 23 ↖	12 22 ↖	10 20 ↖	9 18 ↖	9 18 ↖	9 18 ↖	9 17 ↖	8 17 ↖
Houston Pilots K - Shell Crude	9 18 ↖	8 17 ↖	8 17 ↖	8 16 ↖	7 16 ↖	7 15 ↖	6 14 ↖	6 14 ↖	7 15 ↖	8 16 ↖	8 16 ↖	9 18 ↖	10 20 ↖	12 21 ↖	12 22 ↖	12 22 ↖	12 23 ↖	12 22 ↖	10 20 ↖	9 18 ↖	9 18 ↖	9 18 ↖	9 17 ↖	8 17 ↖
Houston Pilots J - Lynchburg Ferries	8 18 ↖	8 17 ↖	8 17 ↖	8 16 ↖	7 16 ↖	6 15 ↖	6 14 ↖	6 14 ↖	7 15 ↖	8 16 ↖	8 16 ↖	10 18 ↖	10 20 ↖	12 21 ↖	13 22 ↖	13 23 ↖	13 23 ↖	12 22 ↖	10 20 ↖	9 18 ↖	9 18 ↖	9 18 ↖	8 17 ↖	8 17 ↖
Houston Pilots I - Exxon 3	14 20 ↖	13 20 ↖	13 18 ↖	13 17 ↖	12 17 ↖	10 16 ↖	10 16 ↖	10 15 ↖	10 16 ↖	10 17 ↖	10 17 ↖	12 18 ↖	13 20 ↖	13 21 ↖	13 22 ↖	13 22 ↖	14 23 ↖	14 23 ↖	14 22 ↖	14 21 ↖	13 20 ↖	13 20 ↖	13 20 ↖	13 20 ↖
Houston Pilots H - Morgans Point	13 20 ↖	13 18 ↖	13 18 ↖	12 17 ↖	10 17 ↖	10 16 ↖	10 15 ↖	9 15 ↖	10 16 ↖	10 16 ↖	10 17 ↖	12 18 ↖	13 20 ↖	13 21 ↖	13 22 ↖	13 22 ↖	14 22 ↖	14 22 ↖	14 20 ↖	13 20 ↖	13 18 ↖	13 20 ↖	13 18 ↖	13 18 ↖
Houston Pilots G - 75/76	15 22 ↖	15 21 ↖	14 20 ↖	13 20 ↖	13 17 ↖	13 17 ↖	12 16 ↖	10 16 ↖	10 17 ↖	12 17 ↖	12 18 ↖	13 20 ↖	13 21 ↖	13 22 ↖	13 22 ↖	13 23 ↖	14 23 ↖	14 22 ↖	14 21 ↖	14 20 ↖	13 20 ↖	14 20 ↖	14 20 ↖	14 20 ↖
Houston Pilots F - 63/64	15 21 ↖	14 21 ↖	14 20 ↖	13 18 ↖	13 17 ↖	12 17 ↖	12 16 ↖	10 16 ↖	10 17 ↖	12 17 ↖	12 18 ↖	13 20 ↖	13 20 ↖	13 21 ↖	13 22 ↖	13 22 ↖	14 22 ↖	14 22 ↖	14 20 ↖	13 20 ↖	13 18 ↖	13 20 ↖	14 20 ↖	13 20 ↖
Houston Pilots E - 51/52	14 21 ↖	13 20 ↖	13 20 ↖	13 18 ↖	12 17 ↖	12 17 ↖	10 16 ↖	10 16 ↖	10 17 ↖	10 17 ↖	12 18 ↖	12 20 ↖	13 20 ↖	13 21 ↖	13 21 ↖	13 21 ↖	13 21 ↖	13 20 ↖	13 20 ↖	13 18 ↖	13 18 ↖	13 18 ↖	13 20 ↖	13 18 ↖
Houston Pilots D - 37/38	13 20 ↖	13 20 ↖	13 18 ↖	13 18 ↖	12 17 ↖	10 17 ↖	10 16 ↖	10 16 ↖	10 16 ↖	10 17 ↖	10 17 ↖	12 18 ↖	12 20 ↖	13 20 ↖	13 21 ↖	13 21 ↖	13 21 ↖	13 20 ↖	13 20 ↖	13 18 ↖	13 18 ↖	13 18 ↖	13 18 ↖	13 18 ↖
Houston Pilots C - 25/26	13 20 ↖	13 20 ↖	13 18 ↖	12 18 ↖	10 17 ↖	10 17 ↖	10 16 ↖	10 16 ↖	10 16 ↖	10 17 ↖	10 17 ↖	12 18 ↖	12 20 ↖	13 20 ↖	13 21 ↖	13 20 ↖	13 20 ↖	13 20 ↖	12 18 ↖	12 18 ↖	12 18 ↖	13 18 ↖	13 18 ↖	13 18 ↖
Houston Pilots B - 11/12	12 20 ↖	12 18 ↖	10 18 ↖	10 17 ↖	10 17 ↖	10 16 ↖	9 16 ↖	9 16 ↖	9 16 ↖	10 17 ↖	10 17 ↖	10 17 ↖	12 20 ↖	12 20 ↖	12 20 ↖	12 20 ↖	12 20 ↖	12 20 ↖	10 18 ↖	10 18 ↖	10 17 ↖	10 18 ↖	10 18 ↖	10 18 ↖
Houston Pilots A - 1 & 2 Bravo	14 22 ↖	14 21 ↖	13 21 ↖	13 20 ↖	13 18 ↖	13 18 ↖	12 17 ↖	12 17 ↖	12 17 ↖	12 17 ↖	12 18 ↖	13 18 ↖	13 20 ↖	13 20 ↖	13 20 ↖	13 20 ↖	13 20 ↖	13 20 ↖	13 20 ↖	13 20 ↖	13 20 ↖	13 20 ↖	13 20 ↖	13 20 ↖

NOTE: This is automated data that may/may not agree with the official BAM thinking that's found on the daily slides. This data should be used as a guide only.

Houston Pilots: TUE. 12/24/2024



Forecast Discussion

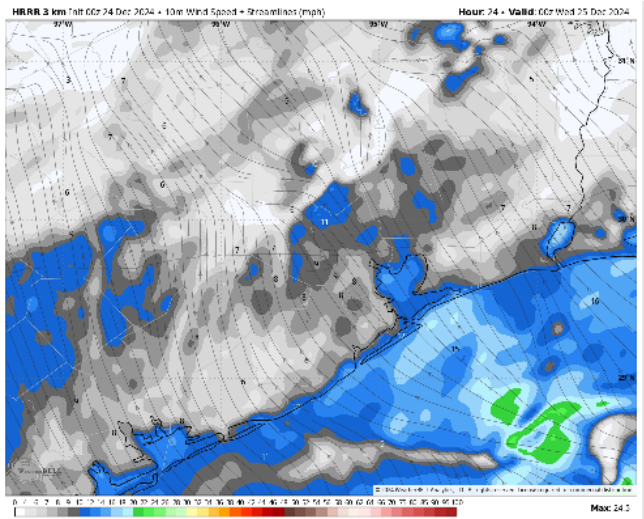
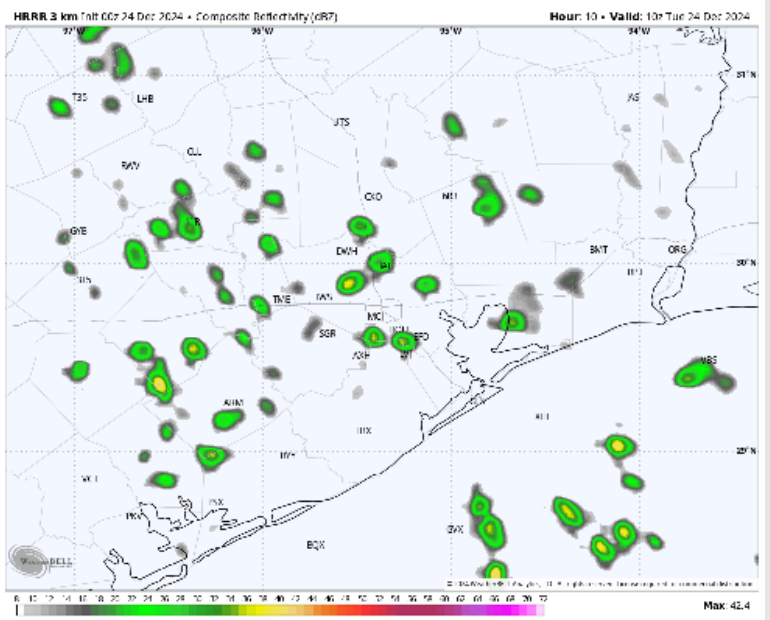
Precip: Scattered (40%) showers in play for all Stations from 4 AM to 7 PM.

Wind: Winds will be out of the S/SE throughout the day, becoming variable after 10 PM. **N of Morgan's Point:** Winds will be at 3 - 8 kts throughout the day. **S of Morgan's Point:** Winds will be at 7-12 kts through today. **A few gusts of 20 - 25 kts will be possible for Stations S of Morgan's Point through 3 AM.** **Gusts of 15 - 20 kts possible for all Stations after 10 AM.**

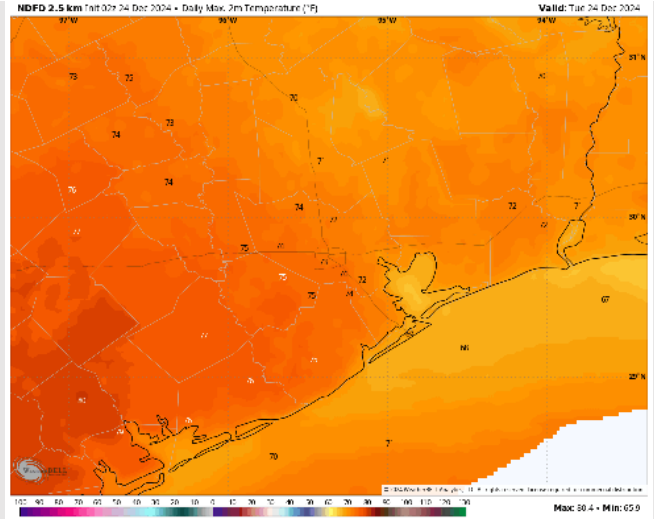
High Temps: **N of Morgan's Point:** Mid 70s F. **S of Morgan's Point:** Upper 60s - Near 70 F.

Visibility: Patchy pockets of fog/mist will be able to develop in the gaps between showers S of Morgan's Point and will be able to reduce visibilities to 1-3 miles at times through 12 PM. **See Fog Timing Slide for additional details.**

Precip Image: 4 AM CT



Wind Speed
6 PM CT



High Temps
Today

Forecast Discussion

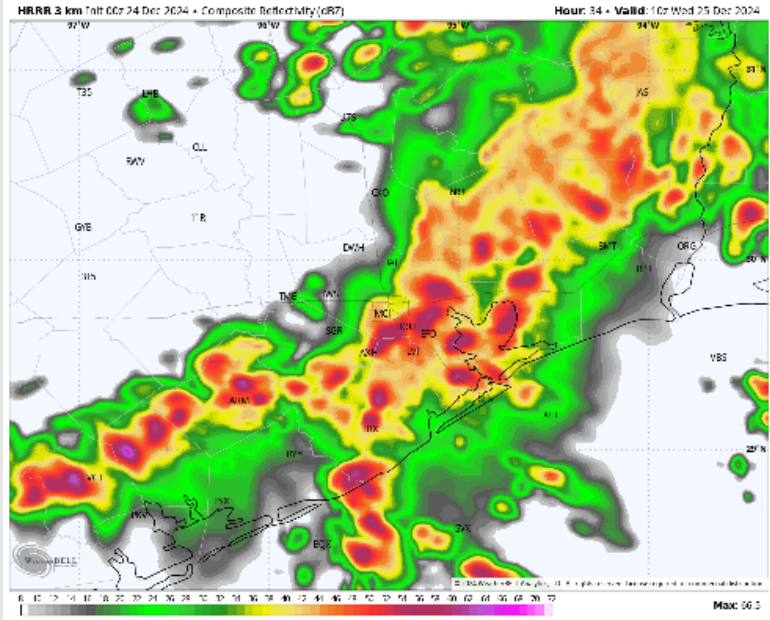
Precip: Widespread (70%) showers in play for all Stations between 1 – 9 AM, coverage then becoming scattered (40%) through 12 PM. Dry conditions favored beyond that time.

Wind: Winds will be out of the SE through 5 AM, becoming variable through the majority of the day, settling out of the E/SE at 10 PM. **N of Morgan's Point:** Winds will be at 3 - 8 kts through Wednesday. **S of Morgan's Point:** Winds will be at 6 – 11 kts throughout the day. **A few gusts of 15-20 kts will be possible for all Stations between 6 AM – 4 PM.**

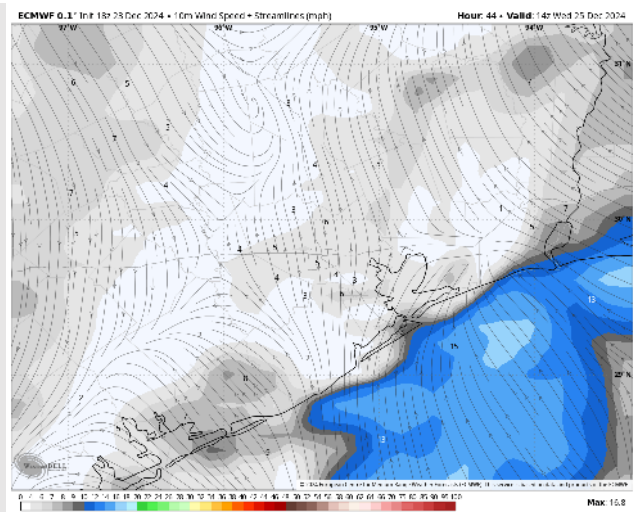
High Temps: **N of Morgan's Point:** Mid 70s F. **S of Morgan's Point:** Upper 60s – Near 70 F.

Visibility: Sea fog may be able to develop S of Morgan's Point between 1-4 AM, however this risk will quickly be washed out by the encroaching front. Visibilities can be reduced to 2-4 miles under downpours through 9 AM.

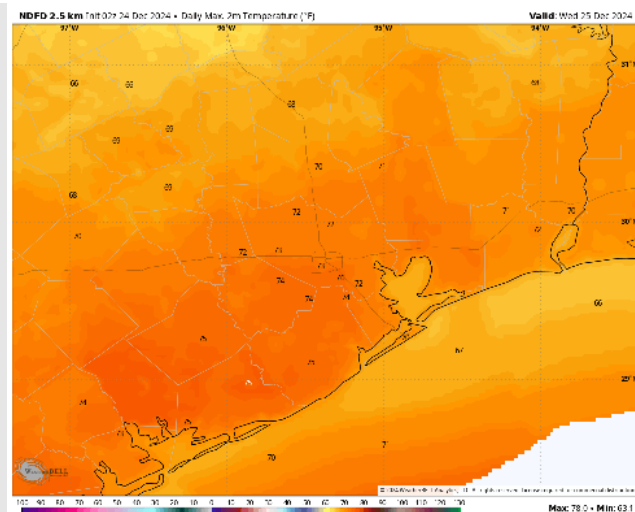
Precip Image: 4 AM CT



Wind Speed:
8 AM CT



High Temps
Wednesday



Forecast Discussion

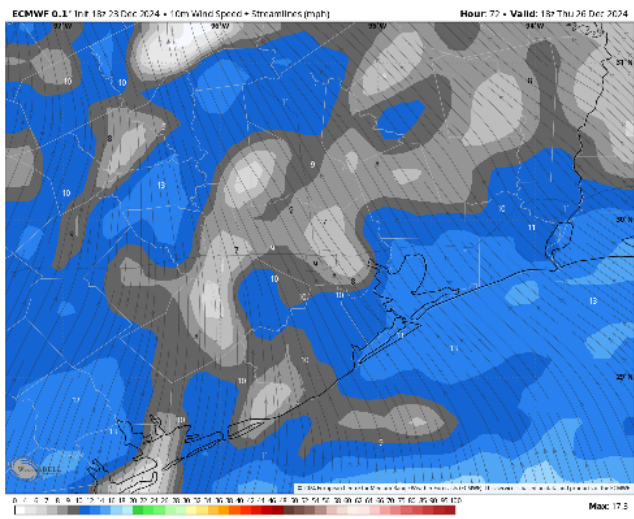
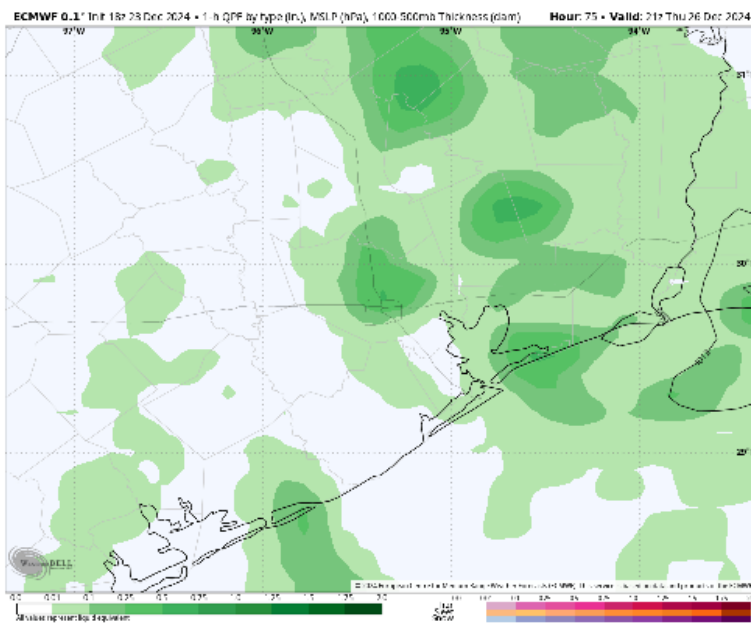
Precip: Isolated (20%) showers in play for all Stations between 7 AM and 12 PM before coverage becomes scattered (60%) throughout the PM.

Wind: Winds direction will 'wobble' throughout the day, with a general tendency to be out of the S. **N of Morgan's Point:** Winds will be at 4 – 9 kts throughout the day Thursday. **S of Morgan's Point:** Winds will be at 4 – 9 kts through 10 AM, increasing to 8– 13 kts for the rest of the day. **A few gusts of 15 – 20 kts will be possible for all Stations after 10 AM.**

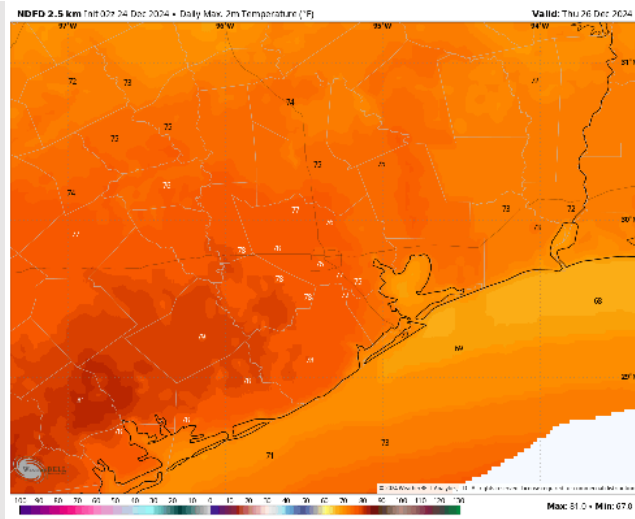
High Temps: **N of Morgan's Point:** Upper 70s F. **S of Morgan's Point:** Upper 60s – Near 70 F.

Visibility: No fog concerns favored for Thursday however visibilities may be reduced to 2-4 miles under downpours.

Precip Image: 3 PM CT



Wind Speed:
12 PM CT

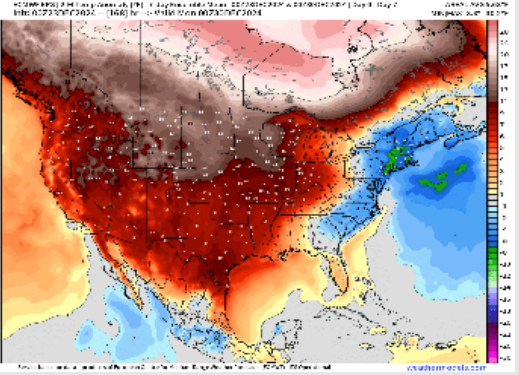


High Temps
Thursday

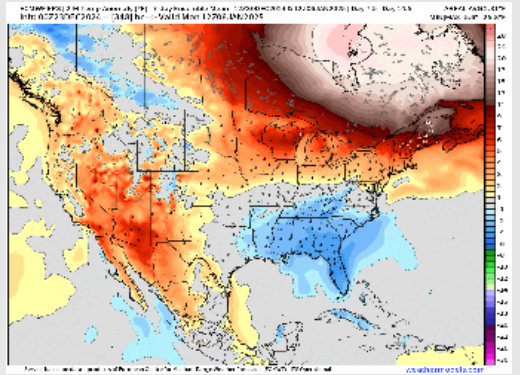
Houston Pilots: 12/24/24



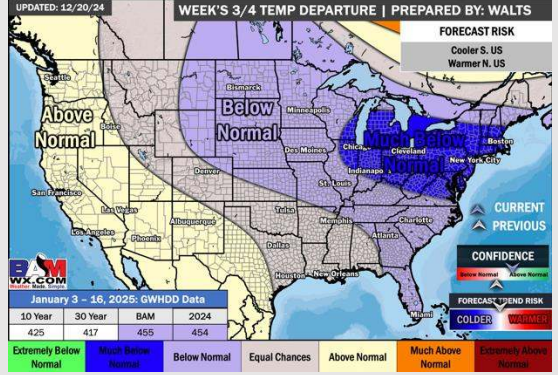
Next 7 Day Temperature Departure



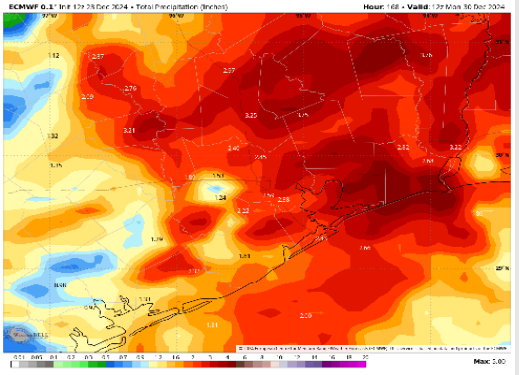
8-14 Day Temperature Departure



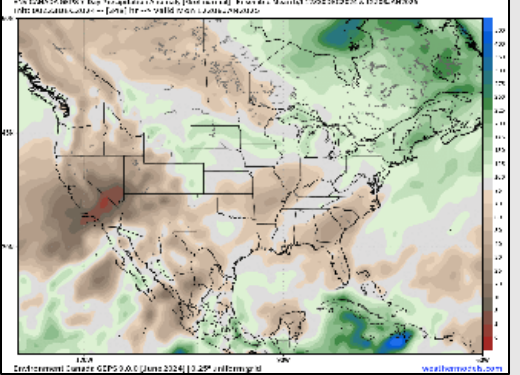
15-30 Day Temperature Departure



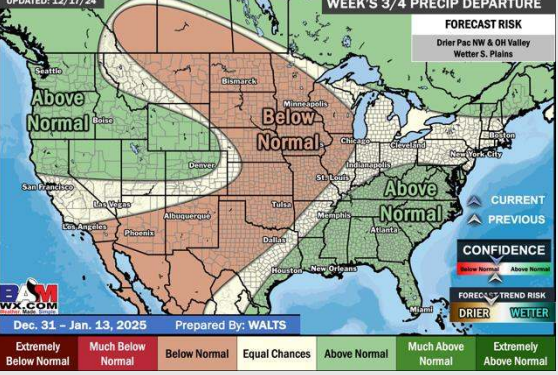
Next 7 Day Total Precipitation



8-14 Day % of Average Precip.



15-30 Day % of Average Precip.



- Temps are expected to be much above normal for the week 1 timeframe. Expecting rain chances to pickup mid-week with 2 - 3" favored in total by the end of the period.
- Near to slightly below normal temperatures and below normal rainfall are expected for week 2.
- Near normal temperatures and above normal precipitation chances are expected for the weeks ¾ timeframe.