

Houston Pilots Forecast Package



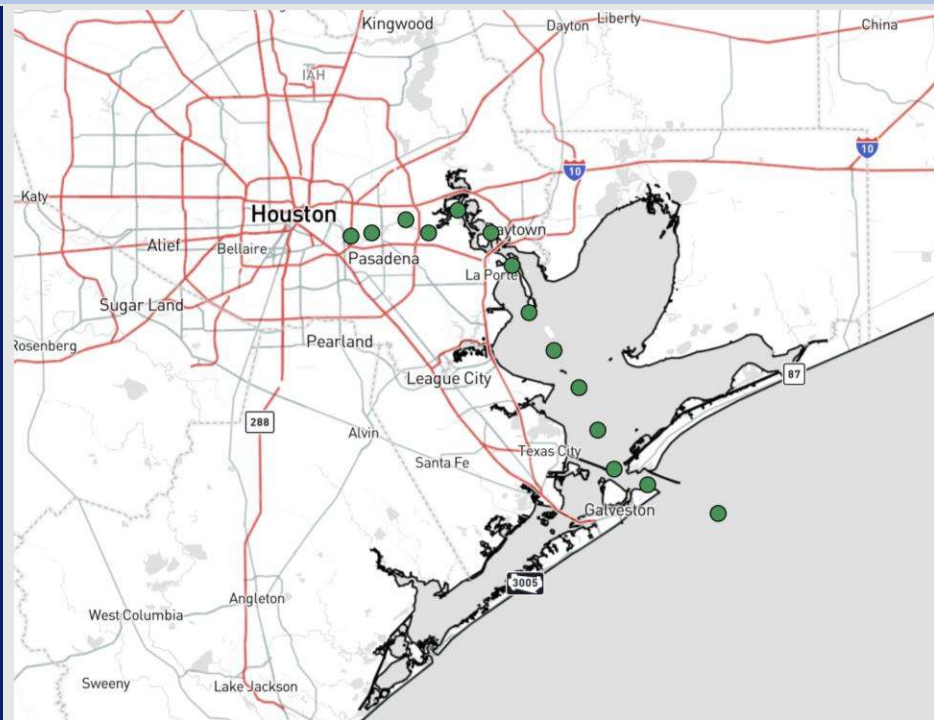
Updated: 1:40 PM CT

Monday, December 23, 2024

Forecaster: Alyssa Elliott

Weather Headlines

- A few gusts nearing 30 kts will be possible near the Boarding Station through the evening.
- Not currently favoring any visibility concerns from fog over the next 72 hours.
- A few light showers expecting this PM with an uptick in rain throughout the rest of the week.



Current Radar: 1:25 PM CT

As always, please do not hesitate to reach out to us with any forecast questions at **(317)-560-8122**. Press 1 for forecast questions.

You can also access real-time forecast updates and 24/7 meteorological chat assistance on your [Clarity](#) app. Click [here](#) for login assistance.



Houston Pilots Extended Range Visibility Report



Thursday 12/26/24

Fog is not favored for Thursday.

Forecast Confidence



Saturday 12/28/24

Fog is not favored for Saturday, but visibility may be reduced under downpours.

Forecast Confidence



Friday 12/27/24

Fog is not favored for Friday, but visibility may be reduced under downpours.

Forecast Confidence



Chance for Fog

Thursday AM	Unlikely
Thursday PM	Unlikely
Friday AM	Unlikely
Friday PM	Unlikely
Saturday AM	Unlikely
Saturday PM	Unlikely

Houston Pilots Visibility Chart (miles)



Visibility	Mon 2 pm	Mon 3 pm	Mon 4 pm	Mon 5 pm	Mon 6 pm	Mon 7 pm	Mon 8 pm	Mon 9 pm	Mon 10 pm	Mon 11 pm	Tue 12 am	Tue 1 am	Tue 2 am	Tue 3 am	Tue 4 am	Tue 5 am	Tue 6 am	Tue 7 am	Tue 8 am	Tue 9 am	Tue 10 am	Tue 11 am	Tue 12 pm	Tue 1 pm
Houston Pilots N - 610 Bridge	10	10	10	10	10	10	10	10	10	10	10	10	10	10	10	10	10	10	10	10	10	10	10	10
Houston Pilots M - Kinder 1	10	10	10	10	10	10	10	10	10	10	10	10	10	10	10	10	10	10	10	10	10	10	10	10
Houston Pilots L - Greens Bayou	10	10	10	10	10	10	10	10	10	10	10	10	10	10	10	10	10	10	10	10	10	10	10	10
Houston Pilots K - Shell Crude	10	10	10	10	10	10	10	10	10	10	10	10	10	10	10	10	10	10	10	10	10	10	10	10
Houston Pilots J - Lynchburg Ferries	10	10	10	10	10	10	10	10	10	10	10	10	10	10	10	10	10	10	10	10	10	10	10	10
Houston Pilots I - Exxon 3	10	10	10	10	10	10	10	10	10	10	10	10	10	10	10	10	10	10	10	10	10	10	10	10
Houston Pilots H - Morgans Point	10	10	10	10	10	10	10	10	10	10	10	10	10	10	10	10	10	10	10	10	10	10	10	10
Houston Pilots G - 75/76	10	10	10	10	10	10	10	10	10	10	10	10	10	10	10	10	10	10	10	10	10	10	10	5
Houston Pilots F - 63/64	10	10	10	10	10	10	10	10	10	10	10	10	10	10	10	10	10	10	10	10	10	10	10	6
Houston Pilots E - 51/52	10	10	10	10	10	10	10	10	10	10	10	10	10	10	10	10	10	10	10	10	10	10	10	7
Houston Pilots D - 37/38	10	10	10	10	10	10	10	10	10	10	10	10	10	10	10	10	10	10	10	10	10	10	10	8
Houston Pilots C - 25/26	10	10	10	10	10	10	10	10	10	10	10	10	10	10	10	10	10	10	10	10	10	10	10	8
Houston Pilots B - 11/12	10	10	10	10	10	10	10	10	10	10	10	10	10	10	10	10	10	10	10	10	10	10	10	8
Houston Pilots A - 1 & 2 Bravo	10	10	10	10	10	10	10	10	10	10	10	10	10	10	10	10	10	10	10	10	10	10	10	8

NOTE: This is automated data that may/may not agree with the official BAM thinking that's found on the daily slides or special visibility report slides. This data should be used as a guide only

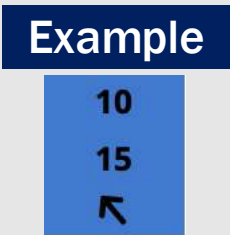
Houston Pilots Wind Chart



Forecast Confidence



Sustained wind 10 Knots
Gusts 15 Knots
Wind from the SE



Wind	Mon 2 pm	Mon 3 pm	Mon 4 pm	Mon 5 pm	Mon 6 pm	Mon 7 pm	Mon 8 pm	Mon 9 pm	Mon 10 pm	Mon 11 pm	Tue 12 am	Tue 1 am	Tue 2 am	Tue 3 am	Tue 4 am	Tue 5 am	Tue 6 am	Tue 7 am	Tue 8 am	Tue 9 am	Tue 10 am	Tue 11 am	Tue 12 pm	Tue 1 pm	
Houston Pilots N - 610 Bridge	13	13	13	13	12	10	10	9	9	9	8	8	8	7	7	6	6	6	6	7	8	9	10	10	
	24	25	24	23	22	20	20	18	18	18	17	17	16	16	15	14	13	13	14	14	15	17	20	21	
	↺	↺	↺	↺	↺	↺	↺	↺	↺	↺	↺	↺	↺	↺	↺	↺	↺	↺	↺	↺	↺	↺	↺	↺	
Houston Pilots M - Kinder 1	13	13	13	13	12	10	10	9	9	9	8	8	8	7	7	6	6	6	6	7	8	9	10	10	
	24	25	24	23	22	20	20	18	18	18	17	17	16	16	15	14	13	13	14	14	15	17	20	21	
	↺	↺	↺	↺	↺	↺	↺	↺	↺	↺	↺	↺	↺	↺	↺	↺	↺	↺	↺	↺	↺	↺	↺	↺	
Houston Pilots L - Greens Bayou	13	13	13	12	12	10	10	10	9	9	8	8	8	8	7	6	6	6	6	7	8	9	10	10	
	24	25	24	23	22	20	20	18	18	18	17	17	16	16	15	14	14	13	14	15	16	17	20	21	
	↺	↺	↺	↺	↺	↺	↺	↺	↺	↺	↺	↺	↺	↺	↺	↺	↺	↺	↺	↺	↺	↺	↺	↺	
Houston Pilots K - Shell Crude	13	13	13	13	12	10	10	9	9	9	8	8	8	8	7	6	6	6	6	7	8	9	10	10	
	24	24	24	22	21	20	18	18	18	18	17	17	16	16	15	14	14	13	14	15	16	17	20	21	
	↺	↺	↺	↺	↺	↺	↺	↺	↺	↺	↺	↺	↺	↺	↺	↺	↺	↺	↺	↺	↺	↺	↺	↺	
Houston Pilots J - Lynchburg Ferries	13	13	13	13	12	10	9	9	9	9	8	8	8	7	7	6	6	6	6	7	8	9	10	10	
	24	24	24	22	21	20	20	18	18	18	17	17	16	16	15	14	14	13	14	15	16	17	20	21	
	↺	↺	↺	↺	↺	↺	↺	↺	↺	↺	↺	↺	↺	↺	↺	↺	↺	↺	↺	↺	↺	↺	↺	↺	
Houston Pilots I - Exxon 3	14	15	15	15	15	14	14	14	14	14	14	13	13	12	10	10	10	9	10	10	10	12	13	13	
	24	24	24	23	22	21	21	21	20	20	20	18	18	17	17	16	15	14	15	15	16	17	20	21	
	↺	↺	↺	↺	↺	↺	↺	↺	↺	↺	↺	↺	↺	↺	↺	↺	↺	↺	↺	↺	↺	↺	↺	↺	
Houston Pilots H - Morgans Point	14	14	15	15	14	14	14	14	14	14	13	13	13	12	10	10	9	9	9	10	10	10	12	13	
	23	23	23	22	22	20	20	20	20	20	20	18	18	17	16	16	15	14	15	15	16	17	20	21	
	↺	↺	↺	↺	↺	↺	↺	↺	↺	↺	↺	↺	↺	↺	↺	↺	↺	↺	↺	↺	↺	↺	↺	↺	
Houston Pilots G - 75/76	15	15	15	15	15	15	15	15	15	15	15	15	14	13	13	12	10	10	10	12	12	13	13	13	
	24	24	24	23	23	21	21	21	21	22	21	21	20	18	17	17	17	16	16	17	17	18	20	21	
	↺	↺	↺	↺	↺	↺	↺	↺	↺	↺	↺	↺	↺	↺	↺	↺	↺	↺	↺	↺	↺	↺	↺	↺	
Houston Pilots F - 63/64	14	15	15	15	15	14	15	15	15	15	15	14	14	13	13	12	10	10	10	12	12	12	13	13	
	24	24	24	23	22	21	21	21	21	21	21	20	20	18	17	17	17	16	16	17	17	18	20	21	
	↺	↺	↺	↺	↺	↺	↺	↺	↺	↺	↺	↺	↺	↺	↺	↺	↺	↺	↺	↺	↺	↺	↺	↺	
Houston Pilots E - 51/52	14	15	15	15	15	14	14	14	14	14	14	14	13	13	12	10	10	10	10	10	10	12	12	13	
	23	23	23	22	22	20	21	21	21	21	21	20	20	18	17	17	16	15	16	16	17	17	20	21	
	↺	↺	↺	↺	↺	↺	↺	↺	↺	↺	↺	↺	↺	↺	↺	↺	↺	↺	↺	↺	↺	↺	↺	↺	
Houston Pilots D - 37/38	14	14	14	14	14	14	14	14	14	14	13	13	13	12	10	10	10	10	10	10	10	12	12	13	
	22	23	23	22	21	20	20	20	20	21	20	20	18	17	17	17	16	15	16	16	17	17	20	21	
	↺	↺	↺	↺	↺	↺	↺	↺	↺	↺	↺	↺	↺	↺	↺	↺	↺	↺	↺	↺	↺	↺	↺	↺	
Houston Pilots C - 25/26	14	14	14	14	13	13	13	13	13	13	13	13	13	12	10	10	10	9	10	10	10	12	12	13	
	22	23	22	22	21	20	20	20	20	21	20	20	18	17	17	17	16	15	16	16	17	17	20	20	
	↺	↺	↺	↺	↺	↺	↺	↺	↺	↺	↺	↺	↺	↺	↺	↺	↺	↺	↺	↺	↺	↺	↺	↺	
Houston Pilots B - 11/12	13	13	13	13	13	13	12	13	13	12	12	12	10	10	10	10	9	9	9	9	10	10	10	12	12
	21	21	21	21	20	20	20	20	20	20	20	18	18	17	17	17	16	15	16	16	16	17	18	20	
	↺	↺	↺	↺	↺	↺	↺	↺	↺	↺	↺	↺	↺	↺	↺	↺	↺	↺	↺	↺	↺	↺	↺	↺	
Houston Pilots A - 1 & 2 Bravo	13	14	14	14	14	14	14	15	15	14	14	14	13	13	13	13	12	10	12	12	12	12	13	13	
	22	22	22	22	21	21	21	22	22	22	21	21	20	20	18	17	17	17	17	17	17	18	20	20	
	↺	↺	↺	↺	↺	↺	↺	↺	↺	↺	↺	↺	↺	↺	↺	↺	↺	↺	↺	↺	↺	↺	↺	↺	

NOTE: This is automated data that may/may not agree with the official BAM thinking that's found on the daily slides.
This data should be used as a guide only.

Houston Pilots: MON. 12/23/2024

Forecast Discussion

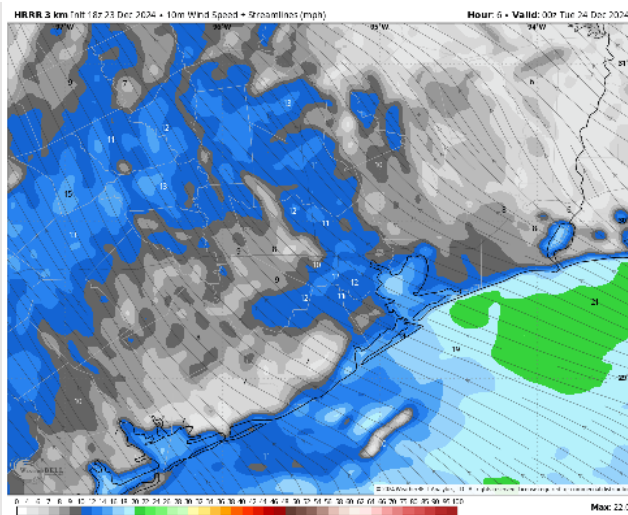
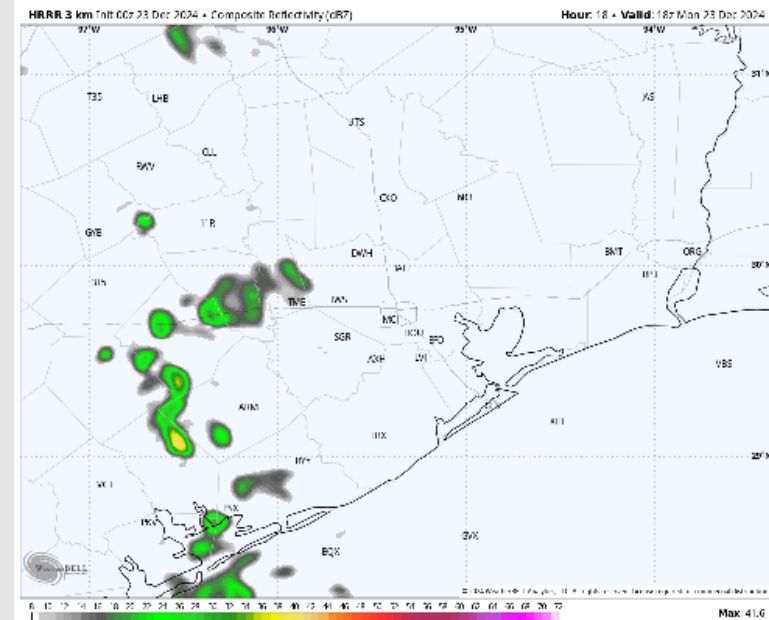
Precip: Dry conditions favored until ~6 PM where drizzle/light pockets of showers will move in, lasting into TUE AM.

Wind: Winds will be out of the SE throughout the PM. **N of Morgan's Point:** Winds will be at 8 – 13 kts throughout the PM. **S of Morgan's Point:** Winds will be at 15 – 20 kts throughout the PM. **A few gusts up to 25 kts will be possible for all Stations with the Boarding Station seeing near 30 kt gusts.**

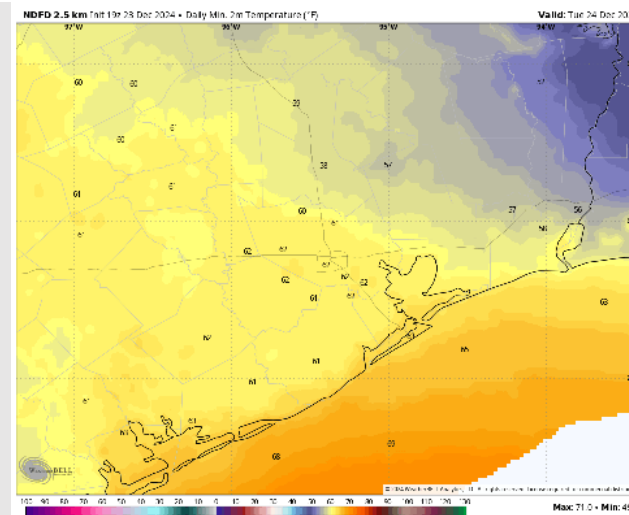
Low Temps: **N of Morgan's Point:** Lower 60s F. **S of Morgan's Point:** Mid 60s F.

Visibility: No visibility concerns favored for the rest of today.

Precip Image: 9 PM CT



Wind Speed:
6 PM CT



Low Temps
TUE AM

Houston Pilots: TUE. 12/24/2024

Forecast Discussion

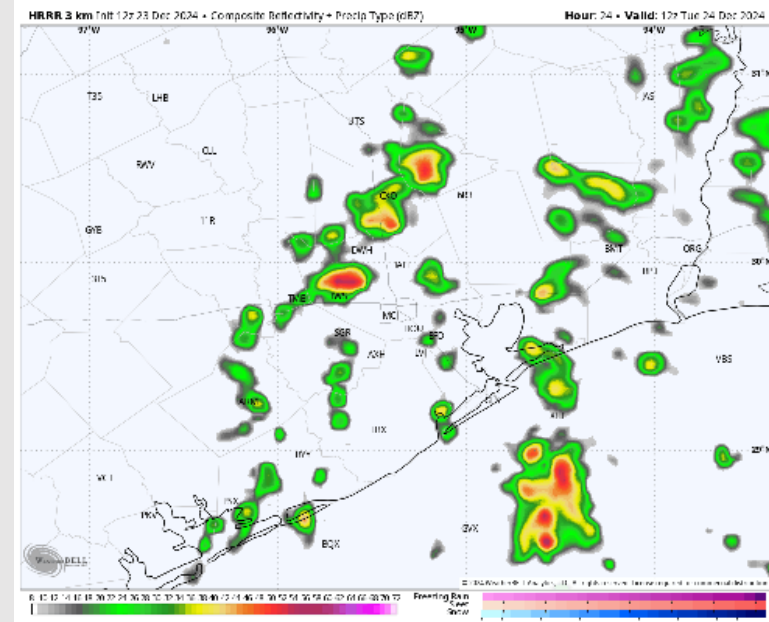
Precip: Scattered (40%) showers in play N of Morgan's Point from 9 AM to 7 PM. Coverage is expected to become more widespread (60%) after 7PM and through the rest of the day.

Wind: Winds will be out of the S/SE throughout the day, becoming variable after 10 PM. **N of Morgan's Point:** Winds will be at 3 - 8 kts throughout the day. **S of Morgan's Point:** Winds will be at 7-12 kts through Tuesday. **A few gusts of 20 - 25 kts will be possible for Stations S of Morgan's Point through 3 AM.**

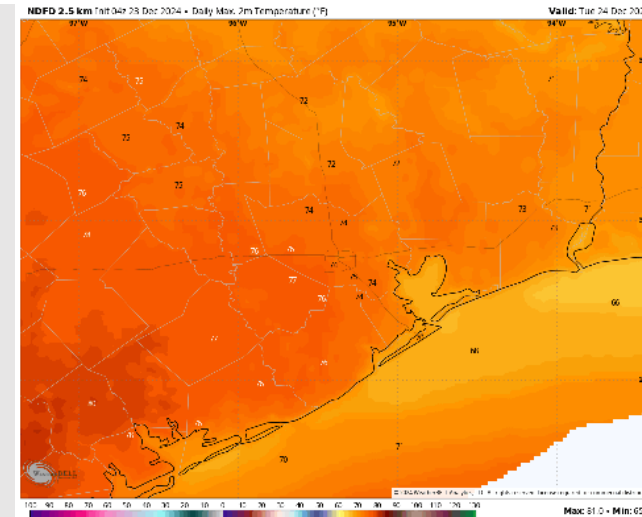
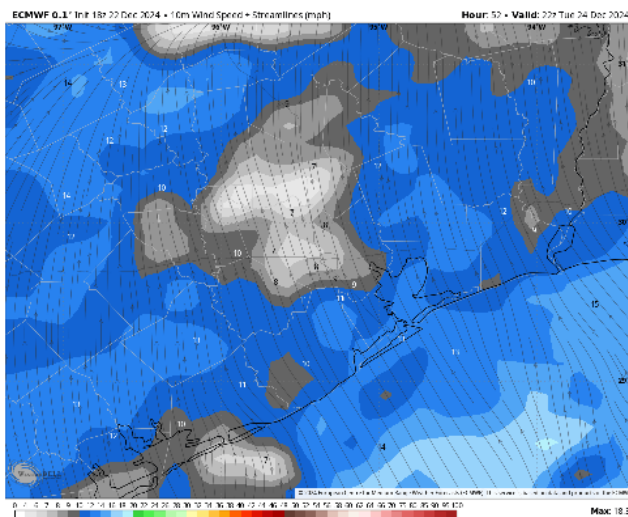
High Temps: **N of Morgan's Point:** Mid 70s F. **S of Morgan's Point:** Upper 60s - Near 70 F.

Visibility: Not favoring any fog concerns for Tuesday, however visibilities can be reduced under downpours after 7 PM.

Precip Image: 6 AM CT



Wind Speed
4 PM CT



High Temps
Tuesday

Houston Pilots: WED. 12/25/2024

Forecast Discussion

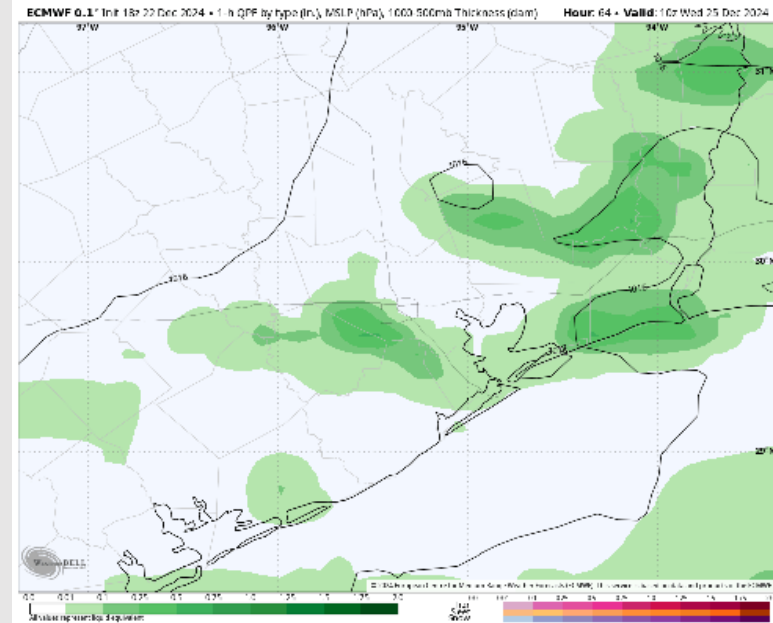
Precip: Widespread (60%) showers in play for all Stations through 3 AM, coverage then becoming scattered (40%) through 9 AM. Dry conditions favored beyond that time.

Wind: Winds will be variable through the majority of the day, settling out of the E/SE as 10 PM. **N of Morgan's Point:** Winds will be at 3 - 8 kts through Wednesday. **S of Morgan's Point:** Winds will be at 4 - 9 kts throughout the day.

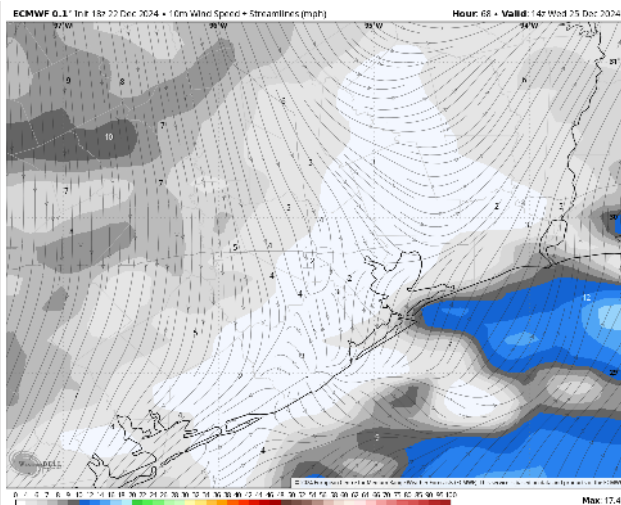
High Temps: **N of Morgan's Point:** Mid 70s F. **S of Morgan's Point:** Upper 60s - Near 70 F.

Visibility: Visibilities can be reduced under downpours through 9 AM. Monitoring a low-end risk for sea fog for Stations S of 25/26 after 6 PM

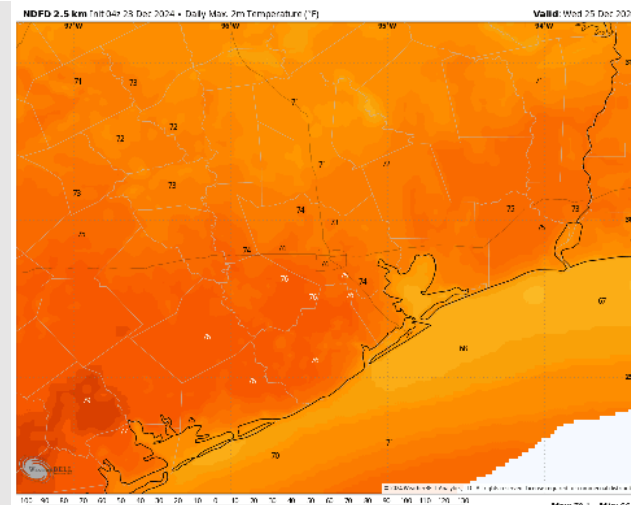
Precip Image: 4 AM CT



Wind Speed:
8 AM CT

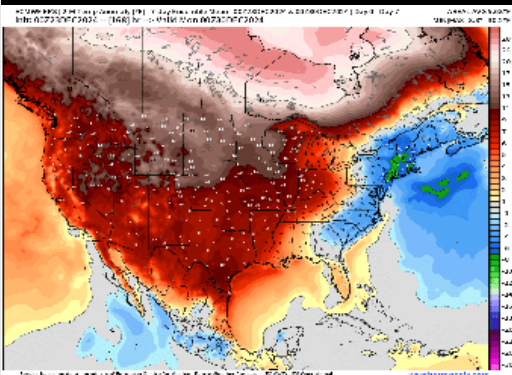


High Temps
Wednesday

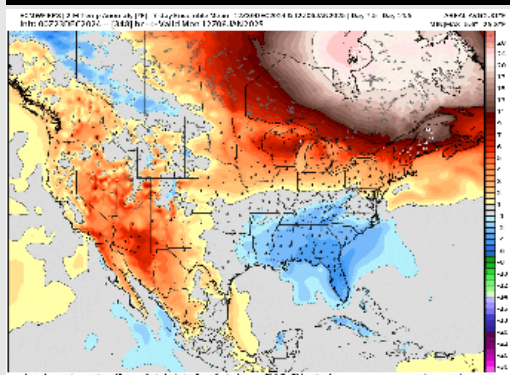


Houston Pilots: 12/23/24

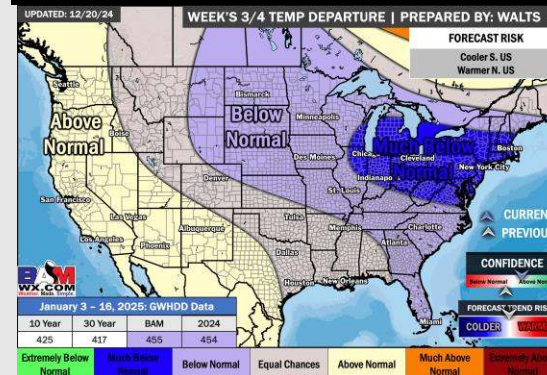
Next 7 Day Temperature Departure



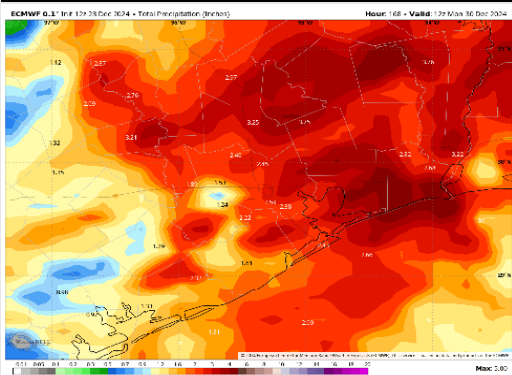
8-14 Day Temperature Departure



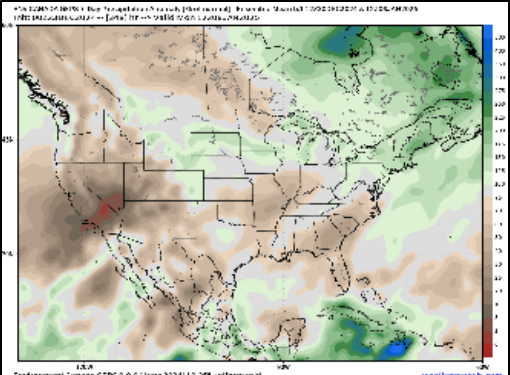
15-30 Day Temperature Departure



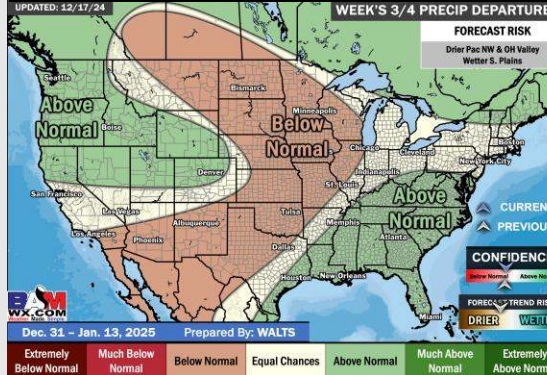
Next 7 Day Total Precipitation



8-14 Day % of Average Precip.



15-30 Day % of Average Precip.



- Temps are expected to be much above normal for the week 1 timeframe. Expecting rain chances to pickup mid-week with 2 - 3" favored in total by the end of the period.
- Near to slightly below normal temperatures and below normal rainfall are expected for week 2.
- Near normal temperatures and above normal precipitation chances are expected for the weeks ¾ timeframe.