

# Houston Pilots Forecast Package



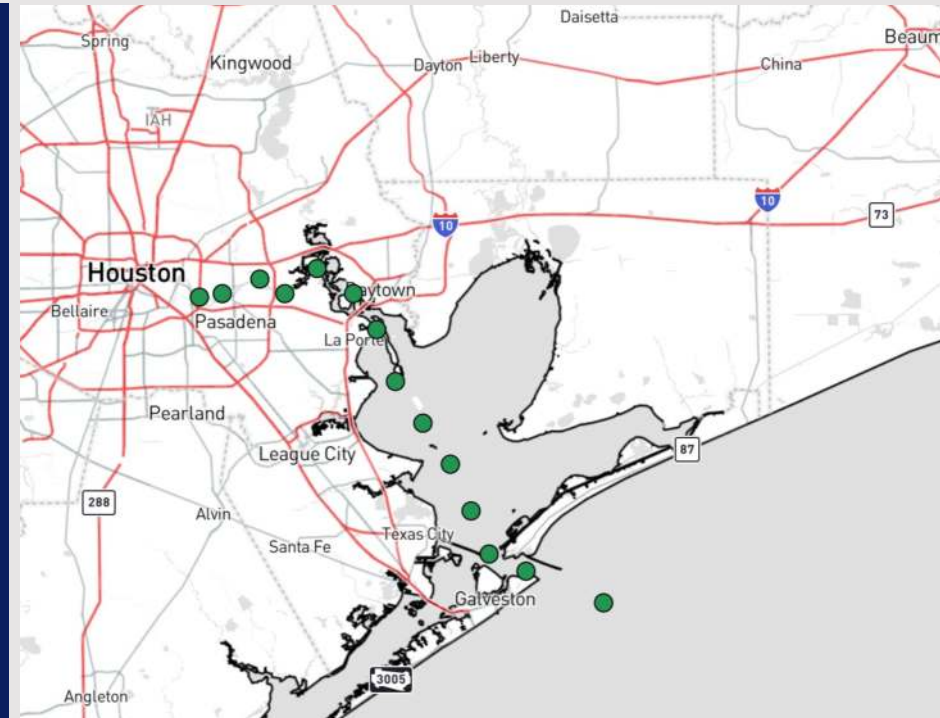
Updated: 12:00 AM CT

Monday, December 23, 2024

Forecaster: Tyler Riggles

## Weather Headlines

- Wind gusts of 20– 25 kts will be in play for Stations after 11 AM today and into early TUE.
- Not currently favoring any visibility concerns from fog over the next 72 hours.
- Rain chances expected to return WED and continue through the latter half of the week.



**Current Radar: 11:39 PM CT**

As always, please do not hesitate to reach out to us with any forecast questions at **(317)-560-8122**. Press **1** for forecast questions.

You can also access real-time forecast updates and 24/7 meteorological chat assistance on your [Clarity](#) app. Click [here](#) for login assistance.



# Houston Pilots Extended Range Visibility Report



## Thursday 12/26/24

Fog is not favored for Thursday.



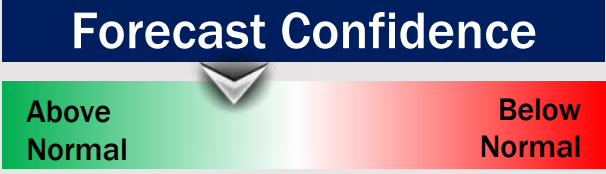
## Saturday 12/28/24

Fog is not favored for Saturday, but visibility may be reduced under downpours.



## Friday 12/27/24

Fog is not favored for Friday, but visibility may be reduced under downpours.



## Chance for Fog

Thursday AM	Unlikely
Thursday PM	Unlikely
Friday AM	Unlikely
Friday PM	Unlikely
Saturday AM	Unlikely
Saturday PM	Unlikely

# Houston Pilots Visibility Chart (miles)



## Forecast Confidence



Visibility	Mon 1 am	Mon 2 am	Mon 3 am	Mon 4 am	Mon 5 am	Mon 6 am	Mon 7 am	Mon 8 am	Mon 9 am	Mon 10 am	Mon 11 am	Mon 12 pm	Mon 1 pm	Mon 2 pm	Mon 3 pm	Mon 4 pm	Mon 5 pm	Mon 6 pm	Mon 7 pm	Mon 8 pm	Mon 9 pm	Mon 10 pm	Mon 11 pm	Tue 12 am
Houston Pilots N - 610 Bridge	10	10	10	10	10	10	10	10	10	10	10	10	10	10	10	10	10	10	10	10	10	10	10	10
Houston Pilots M - Kinder 1	10	10	10	10	10	10	10	10	10	10	10	10	10	10	10	10	10	10	10	10	10	10	10	10
Houston Pilots L - Greens Bayou	10	10	10	10	10	10	10	10	10	10	10	10	10	10	10	10	10	10	10	10	10	10	10	10
Houston Pilots K - Shell Crude	10	10	10	10	10	10	10	10	10	10	10	10	10	10	10	10	10	10	10	10	10	10	10	10
Houston Pilots J - Lynchburg Ferries	10	10	10	10	10	10	10	10	10	10	10	10	10	10	10	10	10	10	10	10	10	10	10	10
Houston Pilots I - Exxon 3	10	10	10	10	10	10	10	10	10	10	10	10	10	10	10	10	10	10	10	10	10	10	10	10
Houston Pilots H - Morgans Point	10	10	10	10	10	10	10	10	10	10	10	10	10	10	10	10	10	10	10	10	10	10	10	10
Houston Pilots G - 75/76	10	10	10	10	10	10	10	10	10	10	10	10	10	10	10	10	10	10	10	10	10	10	10	9
Houston Pilots F - 63/64	10	10	10	10	10	10	10	10	10	10	10	10	10	10	10	10	10	10	10	10	10	10	10	9
Houston Pilots E - 51/52	10	10	10	10	10	10	10	10	10	10	10	10	10	10	10	10	10	10	10	10	10	10	10	9
Houston Pilots D - 37/38	10	10	10	10	10	10	10	10	10	10	10	10	10	10	10	10	10	10	10	10	10	10	10	9
Houston Pilots C - 25/26	10	10	10	10	10	10	10	10	10	10	10	10	10	10	10	10	10	10	10	10	10	10	10	9
Houston Pilots B - 11/12	10	10	10	10	10	10	10	10	10	10	10	10	10	10	10	10	10	10	10	10	10	10	10	9
Houston Pilots A - 1 & 2 Bravo	10	10	10	10	10	10	10	10	10	10	10	10	10	10	10	10	10	10	10	10	10	10	10	9

**NOTE: This is automated data that may/may not agree with the official BAM thinking that's found on the daily slides or special visibility report slides. This data should be used as a guide only**

# Houston Pilots Wind Chart



**Forecast Confidence**

Above Normal Below Normal

Sustained wind 10 Knots

Gusts 15 Knots

Wind from the SE

**Example**

10

15

↖

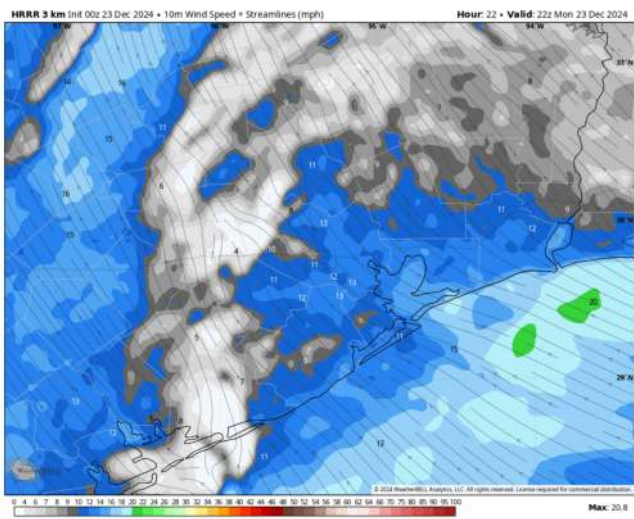
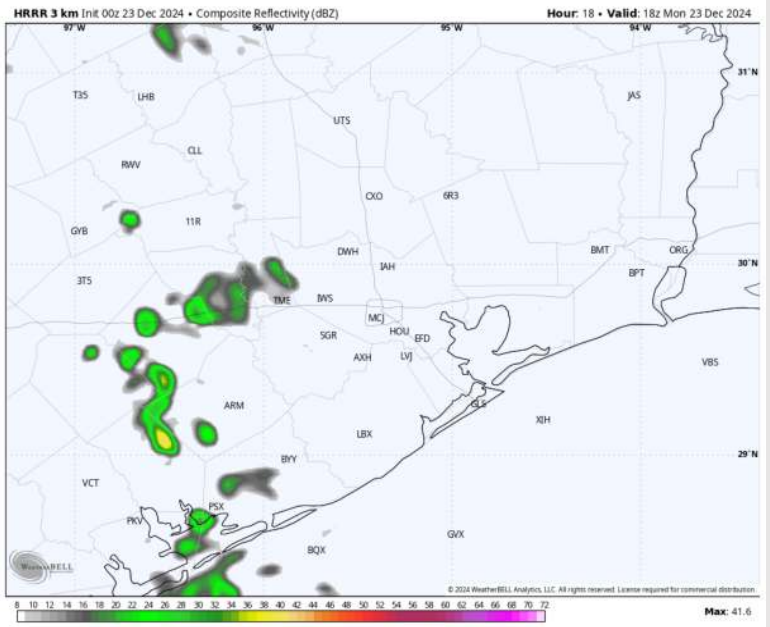
Wind	Mon 1 am	Mon 2 am	Mon 3 am	Mon 4 am	Mon 5 am	Mon 6 am	Mon 7 am	Mon 8 am	Mon 9 am	Mon 10 am	Mon 11 am	Mon 12 pm	Mon 1 pm	Mon 2 pm	Mon 3 pm	Mon 4 pm	Mon 5 pm	Mon 6 pm	Mon 7 pm	Mon 8 pm	Mon 9 pm	Mon 10 pm	Mon 11 pm	Tue 12 am
Houston Pilots N - 610 Bridge	6 14 ↖	6 14 ↖	6 14 ↖	6 14 ↖	6 14 ↖	6 14 ↖	7 14 ↖	7 15 ↖	8 16 ↖	8 17 ↖	9 20 ↖	10 22 ↖	12 22 ↖	12 23 ↖	13 24 ↖	13 24 ↖	13 23 ↖	12 22 ↖	10 20 ↖	10 20 ↖	10 18 ↖	9 18 ↖	9 18 ↖	8 17 ↖
Houston Pilots M - Kinder 1	6 14 ↖	6 14 ↖	6 14 ↖	6 14 ↖	6 14 ↖	6 14 ↖	7 15 ↖	7 15 ↖	8 16 ↖	8 17 ↖	9 20 ↖	10 22 ↖	12 22 ↖	12 24 ↖	13 24 ↖	13 24 ↖	13 23 ↖	12 22 ↖	10 20 ↖	10 20 ↖	10 18 ↖	9 18 ↖	9 18 ↖	8 17 ↖
Houston Pilots L - Greens Bayou	6 14 ↖	6 14 ↖	6 14 ↖	6 14 ↖	6 14 ↖	6 14 ↖	7 15 ↖	7 16 ↖	8 16 ↖	8 17 ↖	10 20 ↖	10 22 ↖	12 22 ↖	13 24 ↖	13 24 ↖	13 24 ↖	13 23 ↖	12 22 ↖	10 20 ↖	10 20 ↖	10 18 ↖	9 18 ↖	9 18 ↖	8 17 ↖
Houston Pilots K - Shell Crude	6 14 ↖	6 14 ↖	6 14 ↖	6 14 ↖	6 14 ↖	7 14 ↖	7 15 ↖	8 16 ↖	8 16 ↖	8 17 ↖	10 20 ↖	10 22 ↖	12 22 ↖	13 24 ↖	13 24 ↖	13 24 ↖	13 22 ↖	12 22 ↖	10 18 ↖	10 18 ↖	9 18 ↖	9 18 ↖	8 17 ↖	8 17 ↖
Houston Pilots J - Lynchburg Ferries	6 13 ↖	6 13 ↖	6 13 ↖	6 13 ↖	6 14 ↖	6 14 ↖	6 14 ↖	7 15 ↖	8 16 ↖	8 17 ↖	10 20 ↖	12 21 ↖	13 22 ↖	13 24 ↖	13 24 ↖	13 24 ↖	13 22 ↖	12 20 ↖	10 20 ↖	10 20 ↖	9 20 ↖	9 18 ↖	9 18 ↖	8 17 ↖
Houston Pilots I - Exxon 3	10 15 ↖	10 15 ↖	10 15 ↖	10 15 ↖	10 16 ↖	10 16 ↖	10 16 ↖	10 17 ↖	10 17 ↖	10 17 ↖	13 20 ↖	13 21 ↖	13 22 ↖	14 23 ↖	15 24 ↖	15 24 ↖	15 23 ↖	15 22 ↖	14 21 ↖	14 21 ↖	14 21 ↖	15 21 ↖	15 20 ↖	14 20 ↖
Houston Pilots H - Morgans Point	10 16 ↖	10 16 ↖	10 15 ↖	10 15 ↖	10 16 ↖	10 16 ↖	10 16 ↖	10 17 ↖	10 17 ↖	10 17 ↖	12 20 ↖	13 21 ↖	13 22 ↖	14 23 ↖	14 23 ↖	15 23 ↖	15 22 ↖	15 22 ↖	14 21 ↖	14 20 ↖	14 21 ↖	14 20 ↖	14 20 ↖	13 20 ↖
Houston Pilots G - 75/76	13 17 ↖	13 17 ↖	13 17 ↖	13 17 ↖	13 17 ↖	13 17 ↖	13 17 ↖	13 18 ↖	13 18 ↖	13 20 ↖	13 20 ↖	13 22 ↖	13 22 ↖	14 23 ↖	14 24 ↖	15 24 ↖	15 23 ↖	15 22 ↖	15 21 ↖	15 21 ↖	15 22 ↖	15 22 ↖	15 22 ↖	15 22 ↖
Houston Pilots F - 63/64	13 17 ↖	13 17 ↖	13 17 ↖	13 17 ↖	13 17 ↖	13 17 ↖	13 18 ↖	13 18 ↖	13 18 ↖	13 20 ↖	13 20 ↖	13 22 ↖	13 22 ↖	14 23 ↖	15 24 ↖	15 24 ↖	15 23 ↖	15 22 ↖	15 22 ↖	15 21 ↖	15 21 ↖	15 22 ↖	15 22 ↖	15 22 ↖
Houston Pilots E - 51/52	13 17 ↖	13 17 ↖	13 17 ↖	13 17 ↖	13 17 ↖	13 17 ↖	13 18 ↖	13 18 ↖	13 18 ↖	13 20 ↖	13 20 ↖	13 22 ↖	13 22 ↖	13 23 ↖	14 23 ↖	15 23 ↖	15 22 ↖	15 22 ↖	15 21 ↖	14 21 ↖	15 21 ↖	15 21 ↖	15 21 ↖	15 21 ↖
Houston Pilots D - 37/38	13 17 ↖	13 17 ↖	13 17 ↖	13 17 ↖	13 17 ↖	13 17 ↖	13 18 ↖	13 18 ↖	13 18 ↖	13 20 ↖	13 20 ↖	13 21 ↖	13 22 ↖	13 23 ↖	14 23 ↖	14 23 ↖	15 22 ↖	14 22 ↖	14 21 ↖	14 21 ↖	14 21 ↖	14 21 ↖	14 21 ↖	14 21 ↖
Houston Pilots C - 25/26	13 18 ↖	13 18 ↖	13 17 ↖	12 17 ↖	12 17 ↖	12 17 ↖	13 17 ↖	13 18 ↖	13 18 ↖	13 20 ↖	13 20 ↖	13 21 ↖	13 21 ↖	13 22 ↖	14 22 ↖	14 22 ↖	14 22 ↖	14 22 ↖	14 21 ↖	13 20 ↖	13 20 ↖	13 21 ↖	14 21 ↖	13 20 ↖
Houston Pilots B - 11/12	12 18 ↖	12 18 ↖	12 17 ↖	10 17 ↖	10 17 ↖	10 17 ↖	10 17 ↖	12 17 ↖	12 17 ↖	12 20 ↖	13 20 ↖	13 20 ↖	13 20 ↖	13 21 ↖	13 21 ↖	13 21 ↖	13 21 ↖	13 21 ↖	13 20 ↖	13 20 ↖	13 20 ↖	13 20 ↖	13 20 ↖	13 20 ↖
Houston Pilots A - 1 & 2 Bravo	15 20 ↖	14 20 ↖	14 20 ↖	13 20 ↖	13 18 ↖	13 18 ↖	13 18 ↖	13 18 ↖	13 18 ↖	13 20 ↖	13 20 ↖	13 21 ↖	13 21 ↖	13 21 ↖	13 21 ↖	14 22 ↖	14 22 ↖	14 22 ↖	14 22 ↖	14 22 ↖	15 22 ↖	15 22 ↖	15 22 ↖	15 22 ↖

**NOTE: This is automated data that may/may not agree with the official BAM thinking that's found on the daily slides. This data should be used as a guide only.**

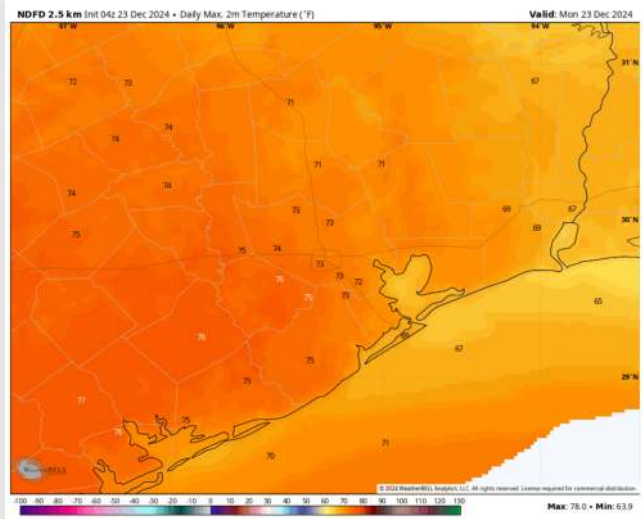
## Forecast Discussion

- Precip:** Favoring dry conditions for today.
- Wind:** Winds will be out of the SE throughout the day. **N of Morgan's Point:** Winds will be at 5 – 10 kts throughout the day. **S of Morgan's Point:** Winds will be at 11 - 16 kts throughout today. **A few gusts of 20 – 25 kts will be possible for all Stations after 11 AM.**
- High Temps:** **N of Morgan's Point:** Lower 70s F. **S of Morgan's Point:** Mid to Upper 60s F.
- Visibility:** No visibility concerns favored for today.

## Precip Image: 12 PM CT



Wind Speed:  
4 PM CT



High Temps  
Today

# Houston Pilots: TUE. 12/24/2024



## Forecast Discussion

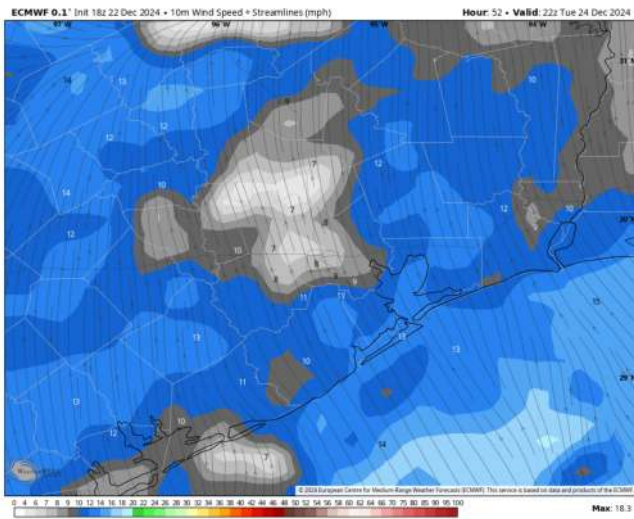
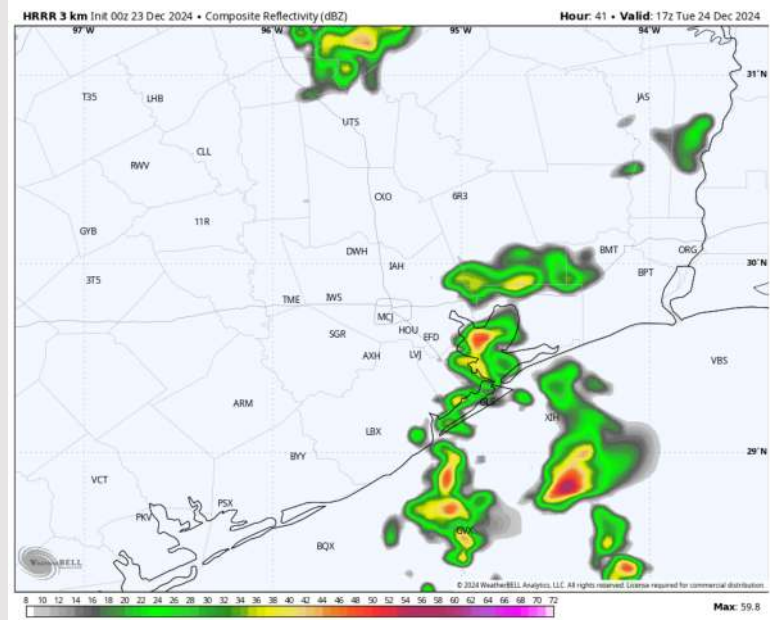
**Precip:** Scattered (40%) showers in play N of Morgan's Point from 9 AM to 7 PM. Coverage is expected to become more widespread (60%) after 7PM and through the rest of the day.

**Wind:** Winds will be out of the S/SE throughout the day, becoming variable after 10 PM. **N of Morgan's Point:** Winds will be at 3 - 8 kts throughout the day. **S of Morgan's Point:** Winds will be at 7-12 kts through Tuesday. **A few gusts of 20 - 25 kts will be possible for Stations S of Morgan's Point through 3 AM.**

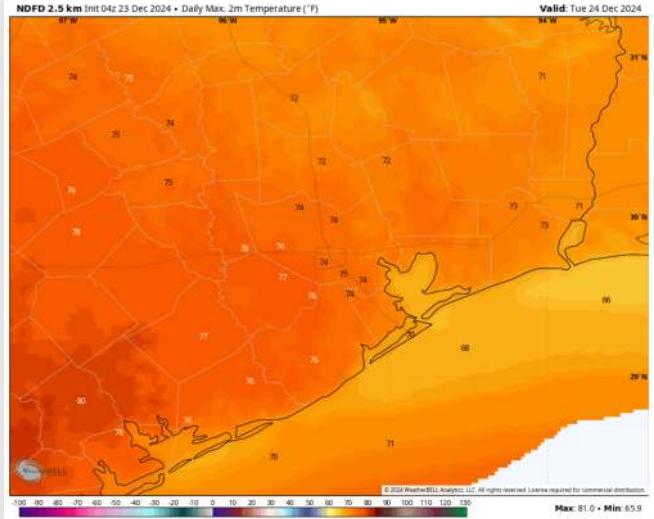
**High Temps:** **N of Morgan's Point:** Mid 70s F. **S of Morgan's Point:** Upper 60s - Near 70 F.

**Visibility:** Not favoring any fog concerns for Tuesday, however visibilities can be reduced under downpours after 7 PM.

## Precip Image: 11 AM CT



Wind Speed  
4 PM CT



High Temps  
Tuesday

## Forecast Discussion

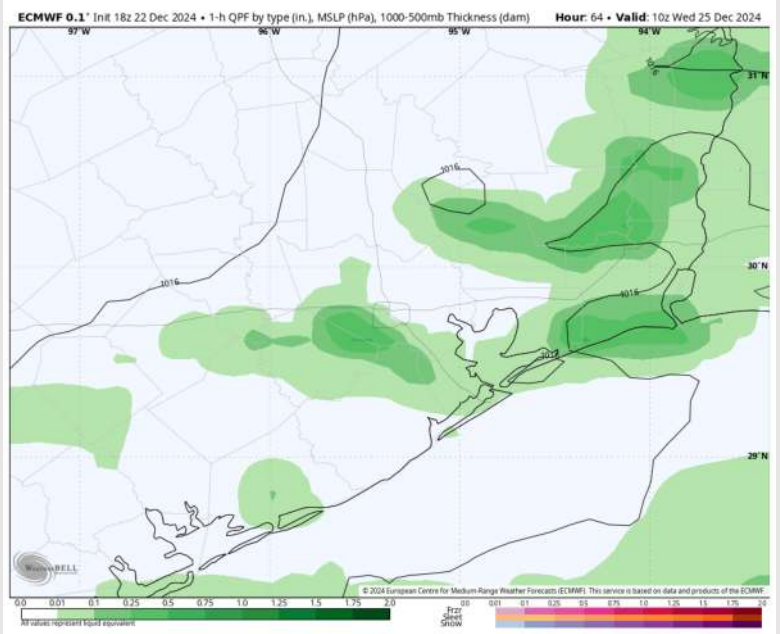
**Precip:** Widespread (60%) showers in play for all Stations through 3 AM, coverage then becoming scattered (40%) through 9 AM. Dry conditions favored beyond that time.

**Wind:** Winds will be variable through the majority of the day, settling out of the E/SE as 10 PM. **N of Morgan's Point:** Winds will be at 3 - 8 kts through Wednesday. **S of Morgan's Point:** Winds will be at 4 - 9 kts throughout the day.

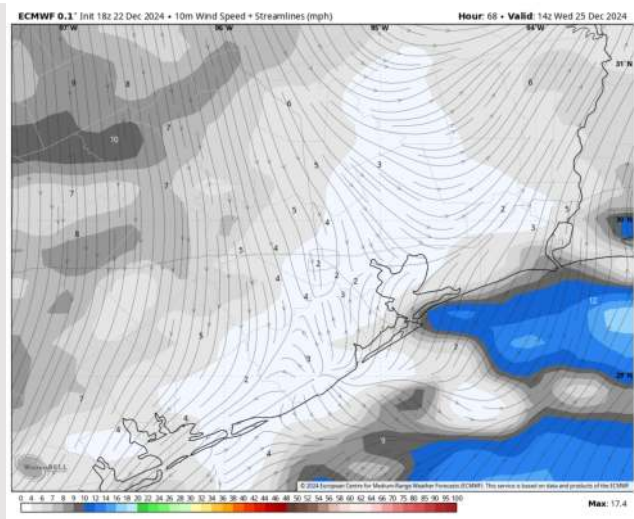
**High Temps:** **N of Morgan's Point:** Mid 70s F. **S of Morgan's Point:** Upper 60s - Near 70 F.

**Visibility:** Visibilities can be reduced under downpours through 9 AM. Monitoring a low-end risk for sea fog for Stations S of 25/26 after 6 PM

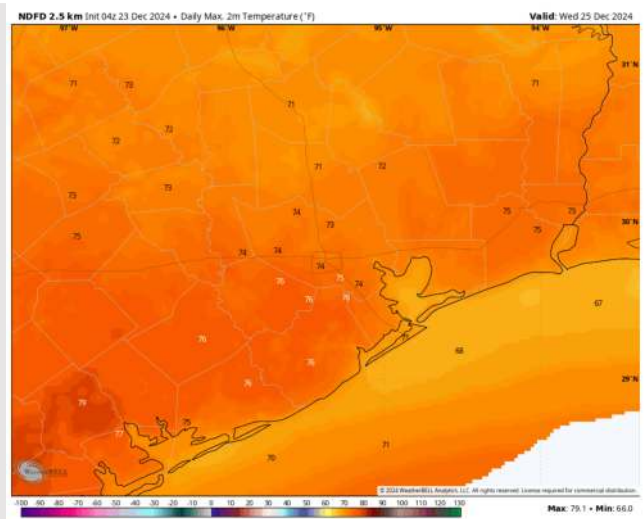
## Precip Image: 4 AM CT



Wind Speed:  
8 AM CT

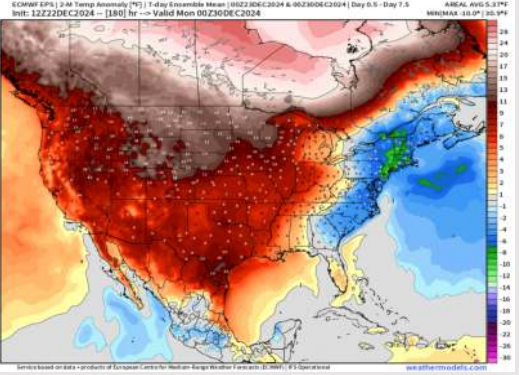


High Temps  
Wednesday

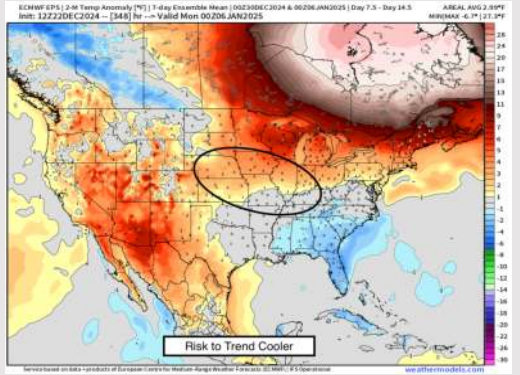


# Houston Pilots: 12/23/24

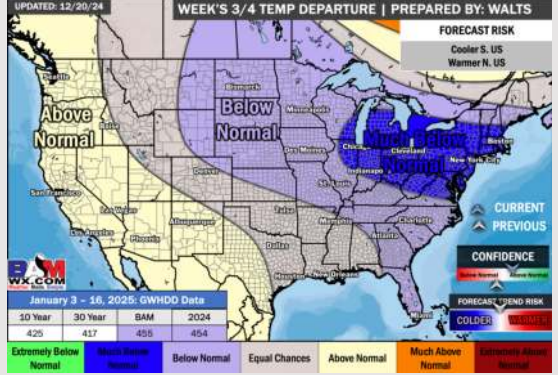
**Next 7 Day Temperature Departure**



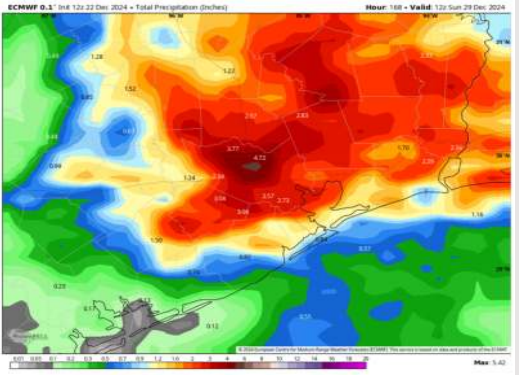
**8-14 Day Temperature Departure**



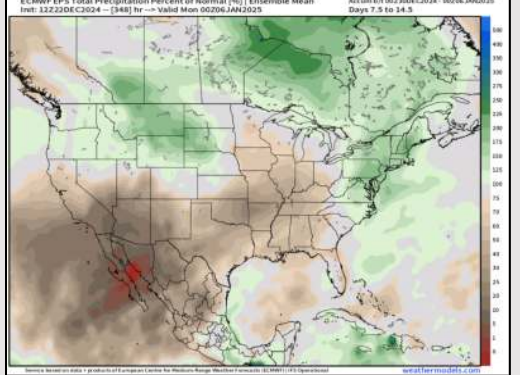
**15-30 Day Temperature Departure**



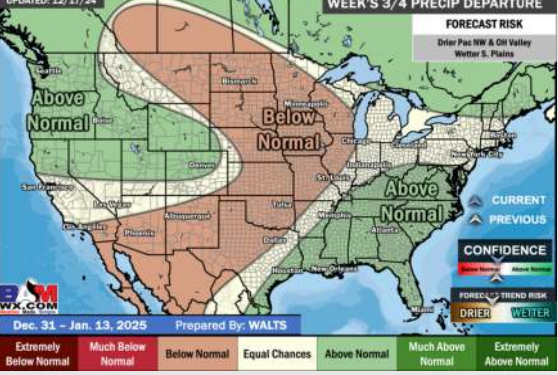
**Next 7 Day Total Precipitation**



**8-14 Day % of Average Precip.**



**15-30 Day % of Average Precip.**



- Temps are expected to be above normal for the week 1 timeframe. Favoring dry conditions for the beginning of week 1 before rain returns in the middle of the week.
- Near normal temperatures and below normal rainfall are expected for week 2.
- Near normal temperatures and above normal precipitation chances are expected for the weeks 3/4 timeframe.