

# Houston Pilots Forecast Package



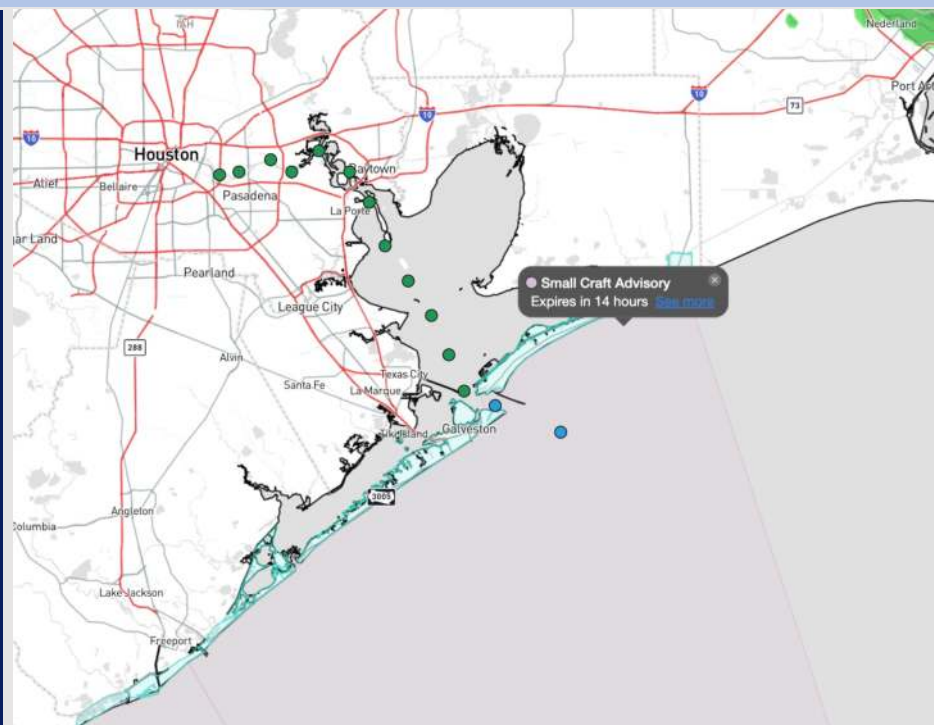
Updated: 1:10 AM CT

Wednesday, December 4, 2024

Forecaster: John Kemper

## Weather Headlines

- Rain chances favored to increase through the morning.
- Wind gusts of 20 – 25 kts in play over the next 72 hours. Max wave heights to remain at 4'-5' through this PM.  
**See Wave Height slide for more info!**
- Monitoring low end fog risk for early Thursday AM.

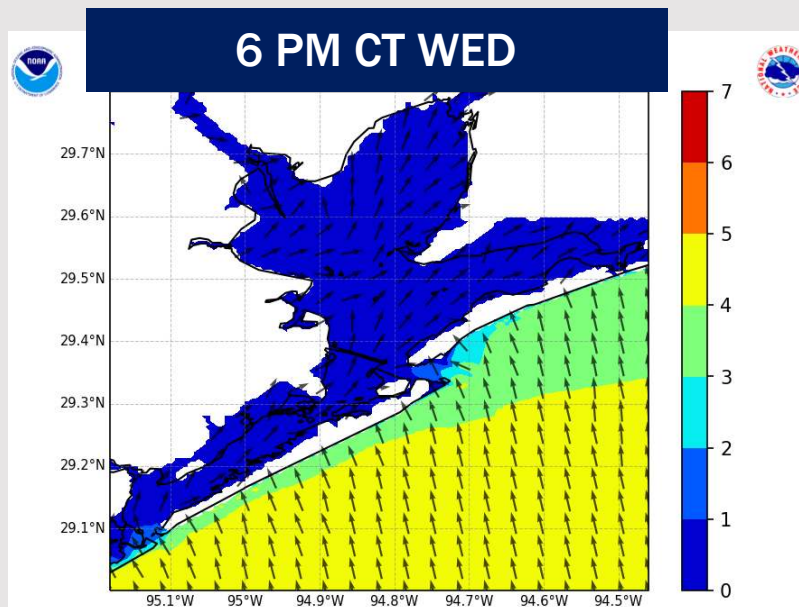
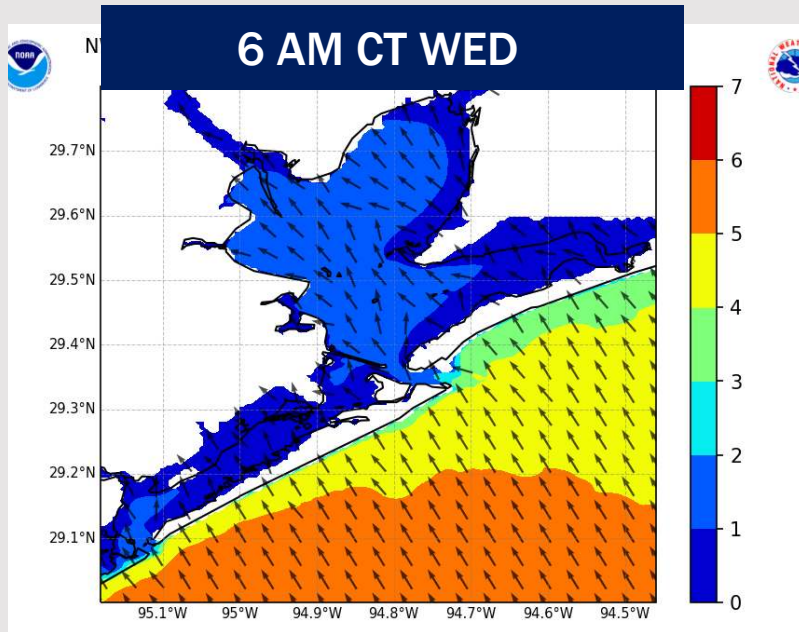


Current Radar: 1:00 AM CT



As always, please do not hesitate to reach out to us with any forecast questions via the chat option on Clarity or our on-call number, **(317)-560-8122** press **1** for forecast questions.

# Wave Height Forecast Update



Wave heights are anticipated to remain at 4' – 5' for the Boarding Station through 6PM WED.

Beyond 6PM WED, wave heights will gradually decrease back towards 3' – 4' through Thursday AM. Confidence remains lower on exact timing.

Wave heights are NOT expected to reach/exceed 6' at this time.

# Houston Pilots Extended Range Visibility Report



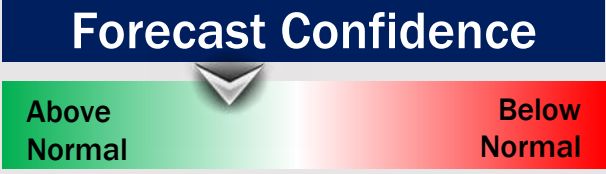
## Saturday 12/7/24

Fog not favored for SAT.



## Sunday 12/8/24

Fog not favored for SUN.



## Monday 12/9/24

Fog not favored for MON.



## Chance for Fog

Saturday AM	Unlikely
Saturday PM	Unlikely
Sunday AM	Unlikely
Sunday PM	Unlikely
Monday AM	Unlikely
Monday PM	Unlikely

# Houston Pilots Visibility Chart (miles)



## Forecast Confidence



Visibility	Wed 2 am	Wed 3 am	Wed 4 am	Wed 5 am	Wed 6 am	Wed 7 am	Wed 8 am	Wed 9 am	Wed 10 am	Wed 11 am	Wed 12 pm	Wed 1 pm	Wed 2 pm	Wed 3 pm	Wed 4 pm	Wed 5 pm	Wed 6 pm	Wed 7 pm	Wed 8 pm	Wed 9 pm	Wed 10 pm	Wed 11 pm	Thu 12 am	Thu 1 am
Houston Pilots N - 610 Bridge	10	10	10	10	10	10	10	10	7.9	6.9	4.9	3.9	4.9	4.9	5.9	4.9	4.9	4.9	5.9	4.9	4.9	4.9	3.9	3.9
Houston Pilots M - Kinder 1	10	10	10	10	10	10	10	10	7.9	6.9	4.9	3.9	4.9	4.9	5.9	4.9	4.9	4.9	5.9	4.9	5.9	4.9	3.9	3.9
Houston Pilots L - Greens Bayou	10	10	10	10	10	10	10	10	7.9	6.9	4.9	4.9	4.9	4.9	5.9	4.9	4.9	4.9	5.9	4.9	5.9	4.9	3.9	3.9
Houston Pilots K - Shell Crude	10	10	10	10	10	10	10	10	7.9	6.9	4.9	4.9	4.9	5.9	5.9	4.9	4.9	4.9	5.9	5.9	5.9	4.9	3.9	3.9
Houston Pilots J - Lynchburg Ferries	10	10	10	10	10	10	10	10	6.9	6.9	4.9	4.9	4.9	4.9	5.9	4.9	4.9	4.9	5.9	4.9	5.9	4.9	3.9	3.9
Houston Pilots I - Exxon 3	10	10	10	10	10	10	10	10	7.9	6.9	4.9	4.9	4.9	5.9	5.9	4.9	4.9	4.9	5.9	5.9	5.9	4.9	3.9	3.9
Houston Pilots H - Morgans Point	10	10	10	10	10	10	10	10	7.9	6.9	4.9	4.9	4.9	5.9	5.9	4.9	4.9	4.9	5.9	5.9	5.9	4.9	3.9	3.9
Houston Pilots G - 75/76	10	10	10	10	10	10	10	10	9	9	6.9	5.9	5.9	6.9	6.9	5.9	4.9	5.9	5.9	5.9	5.9	4.9	0.2	0.2
Houston Pilots F - 63/64	10	10	10	10	10	10	10	10	9	9	6.9	6.9	5.9	6.9	6.9	5.9	4.9	5.9	5.9	5.9	5.9	4.9	0.2	0.2
Houston Pilots E - 51/52	10	10	10	10	10	10	10	10	9	10	7.9	6.9	6.9	6.9	6.9	6.9	5.9	5.9	6.9	5.9	5.9	5.9	0.2	0.2
Houston Pilots D - 37/38	10	10	10	10	10	10	10	10	10	10	7.9	6.9	6.9	6.9	6.9	6.9	5.9	5.9	6.9	5.9	5.9	5.9	0.2	0.2
Houston Pilots C - 25/26	10	10	10	10	10	10	10	10	10	10	7.9	6.9	6.9	6.9	7.9	6.9	5.9	6.9	6.9	6.9	6.9	5.9	0.2	0.2
Houston Pilots B - 11/12	10	10	10	10	10	10	10	10	10	10	9	6.9	6.9	6.9	7.9	6.9	5.9	6.9	6.9	6.9	6.9	5.9	0.2	0.2
Houston Pilots A - 1 & 2 Bravo	10	10	10	10	10	10	10	10	10	10	9	6.9	6.9	7.9	9	6.9	6.9	6.9	6.9	6.9	6.9	6.9	0.2	0.2

**NOTE: This is automated data that may/may not agree with the official BAM thinking that's found on the daily slides or special visibility report slides. This data should be used as a guide only**



# Houston Pilots Wind Chart



→ Sustained wind 10 Knots  
 → Gusts 15 Knots  
 → Wind from the SE

**Example**

10  
 15  
 ↙

Wind	Wed 2 am	Wed 3 am	Wed 4 am	Wed 5 am	Wed 6 am	Wed 7 am	Wed 8 am	Wed 9 am	Wed 10 am	Wed 11 am	Wed 12 pm	Wed 1 pm	Wed 2 pm	Wed 3 pm	Wed 4 pm	Wed 5 pm	Wed 6 pm	Wed 7 pm	Wed 8 pm	Wed 9 pm	Wed 10 pm	Wed 11 pm	Thu 12 am	Thu 1 am
Houston Pilots N - 610 Bridge	8 16 ←	8 16 ←	8 16 ←	8 16 ←	8 16 ←	8 16 ←	8 17 ←	8 17 ←	8 18 ←	9 20 ←	10 21 ←	9 21 ←	9 21 ←	9 21 ←	8 20 ←	8 18 ←	7 16 ←	6 14 ←	6 13 ←	5 12 ←	3 10 ←	3 9 ←	3 9 ←	3 9 ←
Houston Pilots M - Kinder 1	8 17 ←	8 16 ←	8 16 ←	8 16 ←	8 16 ←	8 16 ←	8 17 ←	8 17 ←	8 18 ←	9 20 ←	9 21 ←	10 21 ←	10 21 ←	9 21 ←	9 21 ←	8 18 ←	8 16 ←	6 14 ←	6 13 ←	5 12 ←	3 10 ←	3 9 ←	3 9 ←	3 9 ←
Houston Pilots L - Greens Bayou	8 17 ←	8 16 ←	8 16 ←	8 16 ←	8 16 ←	8 16 ←	8 17 ←	8 17 ←	8 18 ←	9 20 ←	10 21 ←	10 21 ←	10 22 ←	10 21 ←	9 21 ←	8 18 ←	8 16 ←	6 14 ←	6 13 ←	5 12 ←	5 10 ←	3 9 ←	3 9 ←	3 9 ←
Houston Pilots K - Shell Crude	8 17 ←	8 16 ←	8 16 ←	8 17 ←	8 17 ←	8 17 ←	8 18 ←	9 18 ←	9 18 ←	10 20 ←	10 21 ←	10 21 ←	10 22 ←	10 21 ←	9 21 ←	8 18 ←	8 16 ←	6 14 ←	6 13 ←	5 12 ←	5 10 ←	3 9 ←	3 9 ←	3 9 ←
Houston Pilots J - Lynchburg Ferries	7 16 ←	8 16 ←	8 16 ←	8 16 ←	8 16 ←	8 16 ←	8 17 ←	8 17 ←	8 18 ←	9 20 ←	10 21 ←	10 21 ←	10 22 ←	10 21 ←	9 20 ←	8 18 ←	8 16 ←	6 14 ←	6 13 ←	5 12 ←	3 10 ←	3 9 ←	3 8 ←	3 9 ←
Houston Pilots I - Exxon 3	13 17 ←	13 18 ←	13 18 ←	13 18 ←	13 18 ←	13 18 ←	13 18 ←	13 20 ←	13 20 ←	13 21 ←	13 21 ←	13 21 ←	13 22 ←	13 21 ←	12 21 ←	12 20 ←	10 17 ←	9 15 ←	8 14 ←	8 13 ←	8 12 ←	7 12 ←	6 10 ←	6 9 ←
Houston Pilots H - Morgans Point	13 17 ←	13 18 ←	13 18 ←	13 18 ←	13 18 ←	13 18 ←	13 20 ←	13 20 ←	13 20 ←	13 21 ←	13 21 ←	13 21 ←	13 22 ←	13 21 ←	13 21 ←	12 20 ←	10 17 ←	9 15 ←	8 14 ←	8 13 ←	7 12 ←	7 10 ←	6 10 ←	6 9 ←
Houston Pilots G - 75/76	15 21 ←	15 22 ←	15 22 ←	15 22 ←	15 22 ←	15 22 ←	15 22 ←	15 22 ←	14 22 ←	14 23 ←	13 23 ←	13 23 ←	13 23 ←	13 22 ←	13 22 ←	13 21 ←	12 18 ←	10 16 ←	10 16 ←	9 15 ←	8 14 ←	8 13 ←	8 12 ←	7 10 ←
Houston Pilots F - 63/64	15 21 ←	16 22 ←	15 22 ←	16 22 ←	16 22 ←	15 22 ←	15 23 ←	15 23 ←	14 23 ←	14 23 ←	13 23 ←	13 23 ←	13 22 ←	13 22 ←	13 21 ←	13 21 ←	12 18 ←	10 16 ←	9 16 ←	8 14 ←	8 13 ←	7 13 ←	7 12 ←	7 10 ←
Houston Pilots E - 51/52	16 22 ←	16 23 ←	16 23 ←	16 23 ←	16 23 ←	15 23 ←	15 23 ←	15 23 ←	15 23 ←	15 23 ←	14 23 ←	14 23 ←	13 23 ←	13 22 ←	13 22 ←	13 21 ←	12 20 ←	10 17 ←	10 16 ←	9 15 ←	8 14 ←	8 13 ←	7 12 ←	7 10 ←
Houston Pilots D - 37/38	16 23 ←	16 23 ←	16 23 ←	16 23 ←	16 23 ←	15 23 ←	15 23 ←	15 23 ←	15 23 ←	15 24 ←	15 23 ←	14 23 ←	14 23 ←	13 23 ←	13 22 ←	13 21 ←	12 20 ←	10 17 ←	10 16 ←	9 15 ←	8 14 ←	8 13 ←	7 12 ←	7 10 ←
Houston Pilots C - 25/26	16 23 ←	16 24 ←	16 24 ←	16 24 ←	16 24 ←	15 23 ←	15 24 ←	15 24 ←	15 24 ←	15 24 ←	15 24 ←	15 23 ←	15 23 ←	14 23 ←	13 23 ←	13 22 ←	12 20 ←	10 17 ←	10 16 ←	9 15 ←	8 14 ←	8 14 ←	7 13 ←	7 12 ←
Houston Pilots B - 11/12	15 23 ←	15 24 ←	15 24 ←	15 24 ←	15 24 ←	15 23 ←	15 24 ←	15 24 ←	15 24 ←	15 24 ←	15 23 ←	15 23 ←	14 23 ←	14 22 ←	13 22 ←	13 20 ←	10 18 ←	10 17 ←	9 16 ←	8 16 ←	8 15 ←	8 14 ←	7 13 ←	6 12 ←
Houston Pilots A - 1 & 2 Bravo	17 25 ←	17 25 ←	17 24 ←	17 25 ←	17 25 ←	17 24 ←	17 24 ←	17 25 ←	16 25 ←	16 25 ←	16 25 ←	15 24 ←	15 25 ←	15 24 ←	15 23 ←	14 22 ←	13 21 ←	13 20 ←	12 18 ←	12 17 ←	10 16 ←	10 16 ←	9 15 ←	8 14 ←

**NOTE:** This is automated data that may/may not agree with the official BAM thinking that's found on the daily slides. This data should be used as a guide only.

## Forecast Discussion

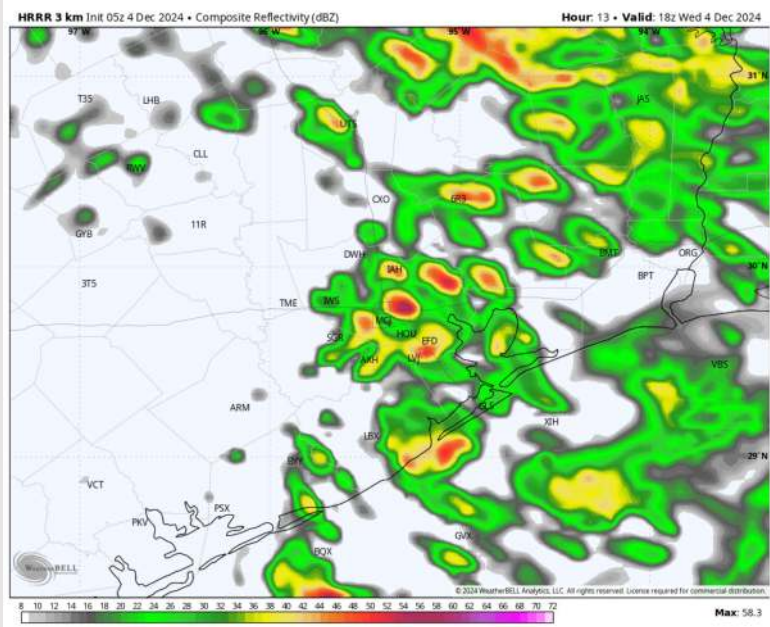
**Precip:** Scattered (20%) showers and isolated storms will begin to move through the area by ~6AM. Coverage to become more widespread (60%) by 10AM, with chances continuing through the rest of the day.

**Wind:** Winds will be out of the SE through 2 PM before quickly shifting out of the S after that time. Beginning at 8PM, winds will slightly shift out of the SSW. **N of Morgan's Point:** Winds will be at 3 - 8 kts throughout today. **S of Morgan's Point:** Winds will be at 13 - 18 kts through 8 PM, decreasing to 4 - 9 kts after that time. **Wind gusts of 20 - 25 kts in play for Stations S of Morgan's Point through 5 PM.**

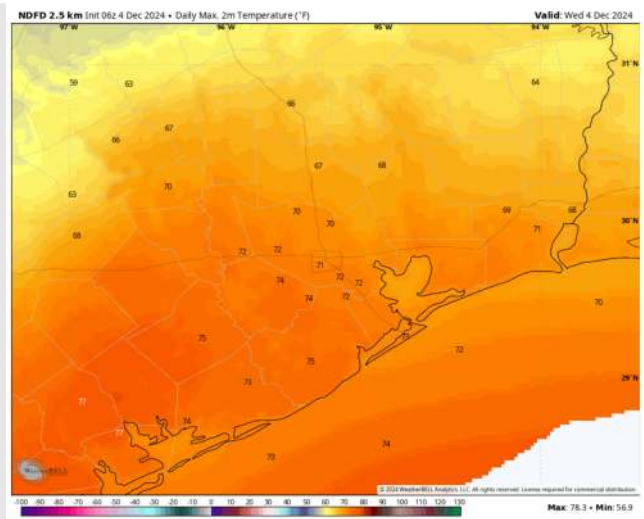
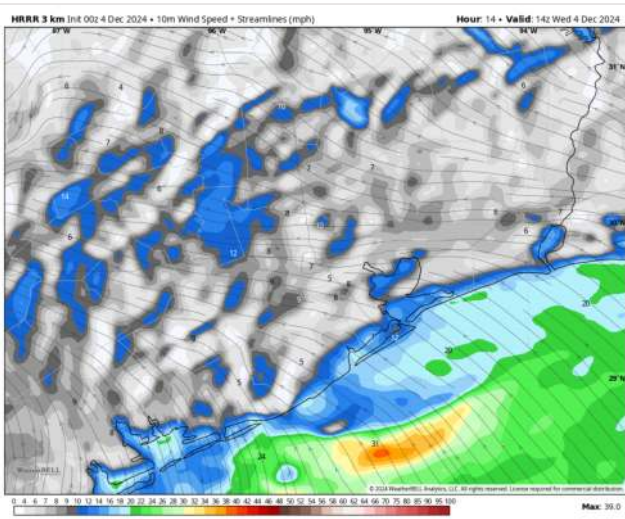
**High Temps:** **N of Morgan's Point:** Lower 70s F. **S of Morgan's Point:** Low 70s F.

**Visibility:** No fog concerns for today, however visibility can be reduced under heavy showers.

## Precip Image: 12 PM CT



**Wind Speed:  
8 AM CT**



**High Temps  
Today**



## Forecast Discussion

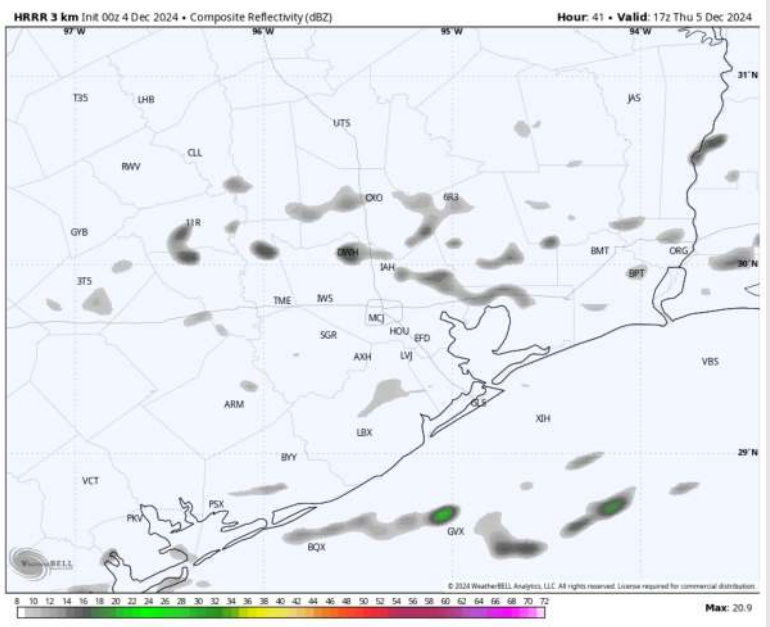
**Precip:** A few isolated showers will be possible between 4AM and 1PM (20% chances) for all stations. Dry conditions favored for all Stations after 1 PM.

**Wind:** Winds will be out of the NE throughout the day Thursday. **N of Morgan's Point:** Winds will be at 3 – 8 kts through 5 AM, increasing slightly to 5 – 10 kts after that time. **S of Morgan's Point:** Winds at 4 – 9 kts through 5 AM, increasing to 16 – 22 kts after that time and remaining there for the rest of Thursday. **Wind gusts of 25 – 30 kts in play for Stations S of Morgan's Point from 8AM – 10PM.**

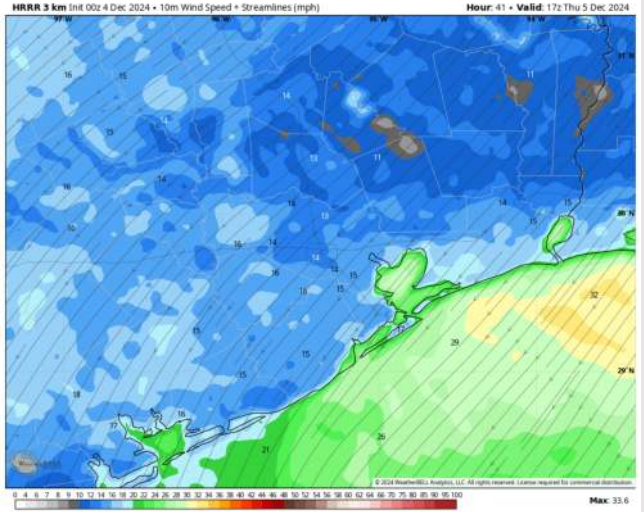
**High Temps:** **N of Morgan's Point:** Mid to Upper 60s F. **S of Morgan's Point:** Mid to Upper 60s F.

**Visibility:** Monitoring a low-end risk for patchy fog for all stations for a brief period between 12AM-4AM as a front passes through the area. Confidence very low at this time.

## Precip Image: 11 AM CT

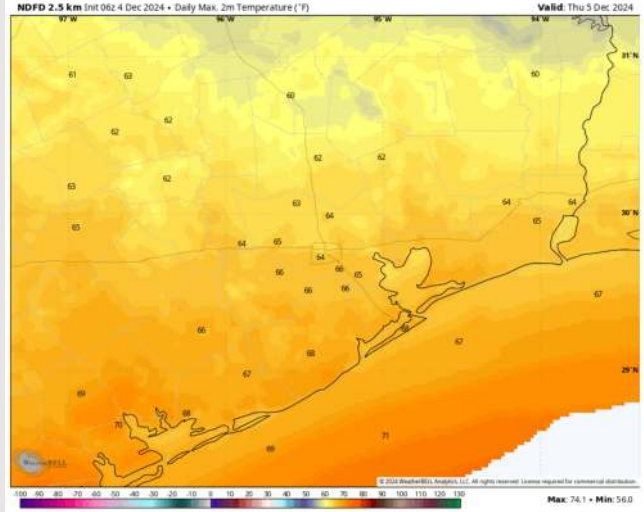


HRRR 3 km Init 00z 4 Dec 2024 • 10m Wind Speed + Streamlines (mph) Hour: 41 • Valid: 17z Thu 5 Dec 2024



Wind Speed:  
11 AM CT

NDFD 2.5 km Init 06z 4 Dec 2024 • Daily Max 2m Temperature (°F) Valid: Thu 5 Dec 2024



High Temps  
Thursday

# Houston Pilots: FRI. 12/6/2024



## Forecast Discussion

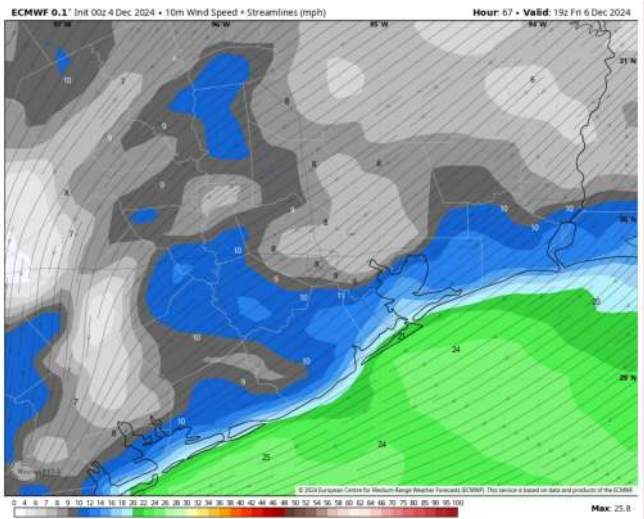
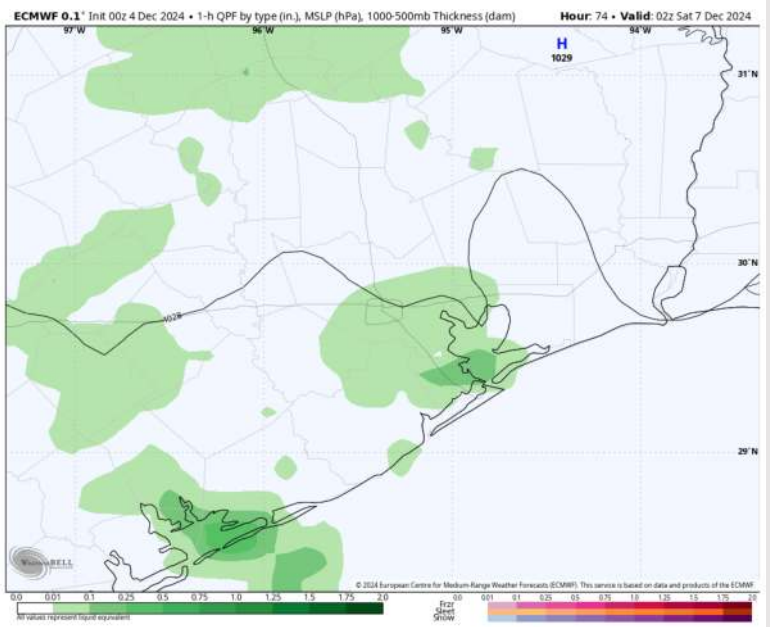
**Precip:** Scattered showers and storms will work into the area as early as 7PM, continuing for the rest of Friday evening.

**Wind:** Winds will be out of the NE/ENE for all of Friday. **N of Morgan's Point:** Winds will be at 5 – 10 kts for all of Friday. **S of Morgan's Point:** Winds will be at 13 – 19 kts for all of Friday. **Wind gusts of 20 – 25 kts in play for all Stations from 3AM to 5PM.**

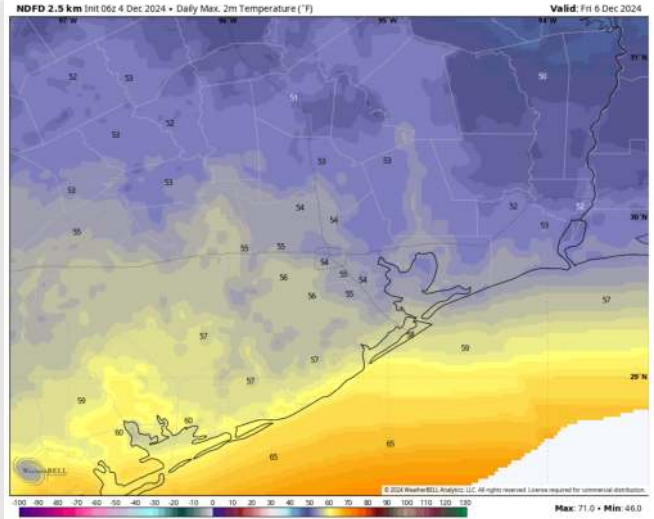
**High Temps:** **N of Morgan's Point:** Mid 50s F. **S of Morgan's Point:** Upper 50s F.

**Visibility:** No visibility concerns for Friday.

## Precip Image: 8 PM CT



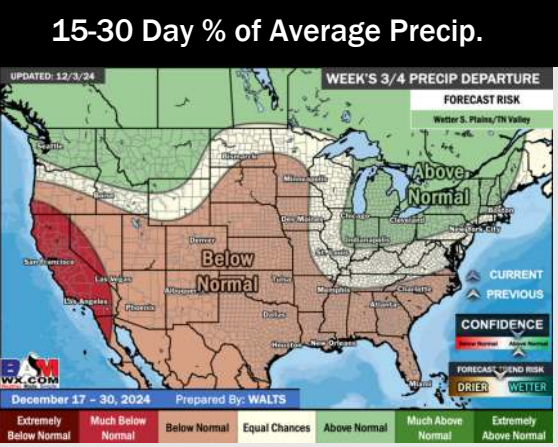
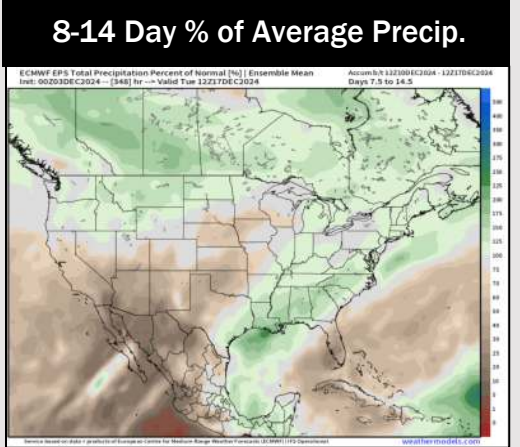
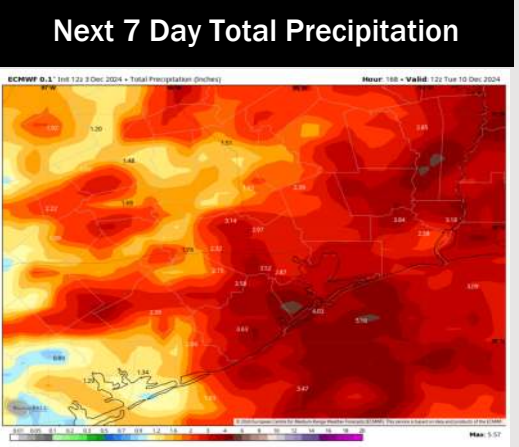
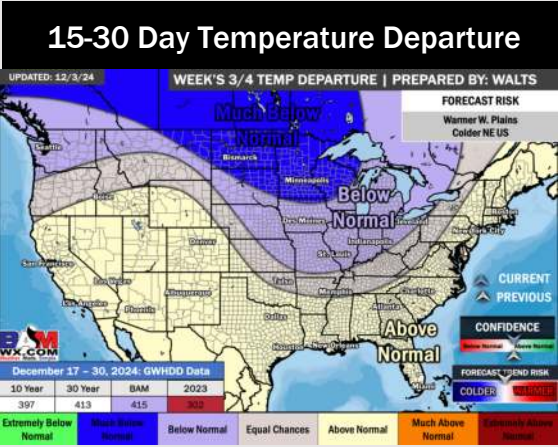
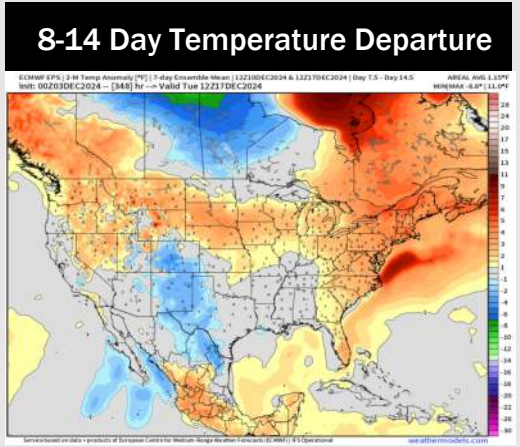
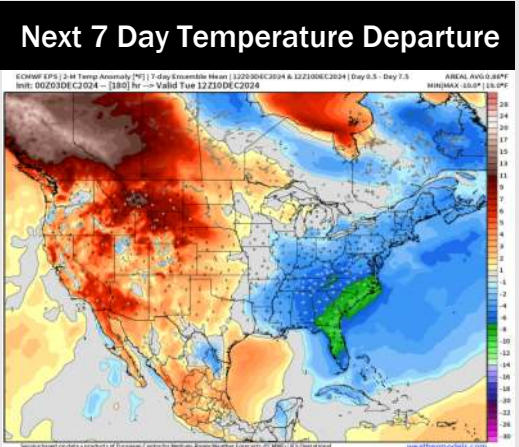
Wind Speed  
1 PM CT



High Temps  
Friday



# Houston Pilots: 12/4/24



- Temps are expected to be around normal for the week 1 timeframe. Dry conditions are expected to come to an end as scattered showers and storms build in this evening continuing for the rest of the week.
- Near normal temperatures are favored for week 2. Favoring above normal rainfall week 2.
- Above normal temperatures and below normal precipitation chances are expected for the weeks 3/4 timeframe.