

Houston Pilots Forecast Package



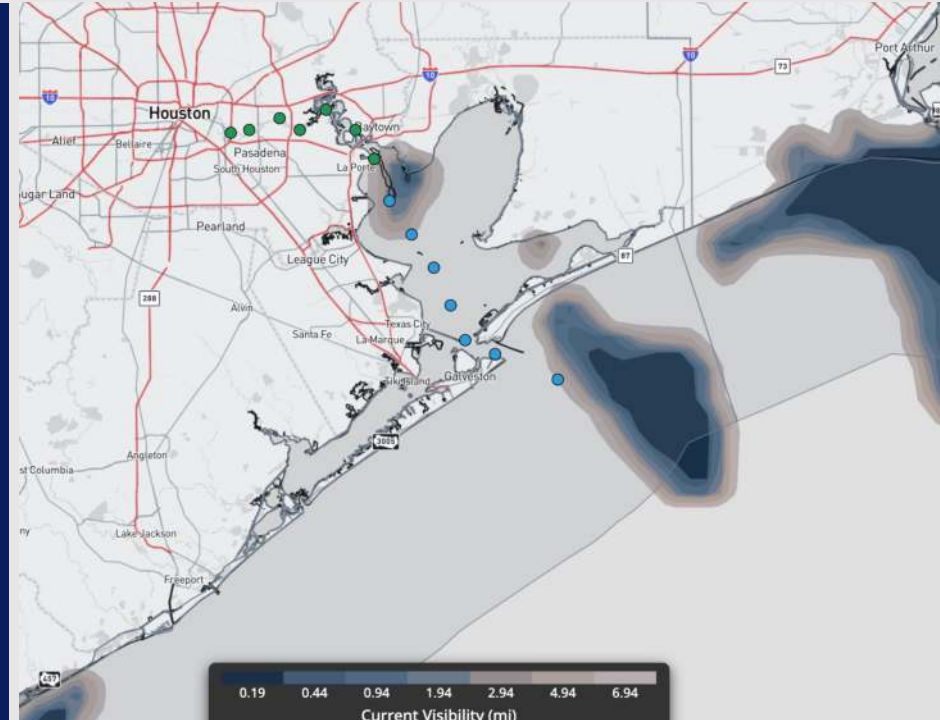
Updated: 7:30 PM CT

Tuesday, December 17, 2024

Forecaster: John Kemper

Weather Headlines

- Storms move into the area late WED AM, bringing risks for lightning and 25-30 kt gusts.
- Patchy to widespread sea fog threat still in play this PM through WED AM. See visibility slides for more details.



Current Radar: 7:30 PM CT

As always, please do not hesitate to reach out to us with any forecast questions at **(317)-560-8122**. Press **1** for forecast questions.

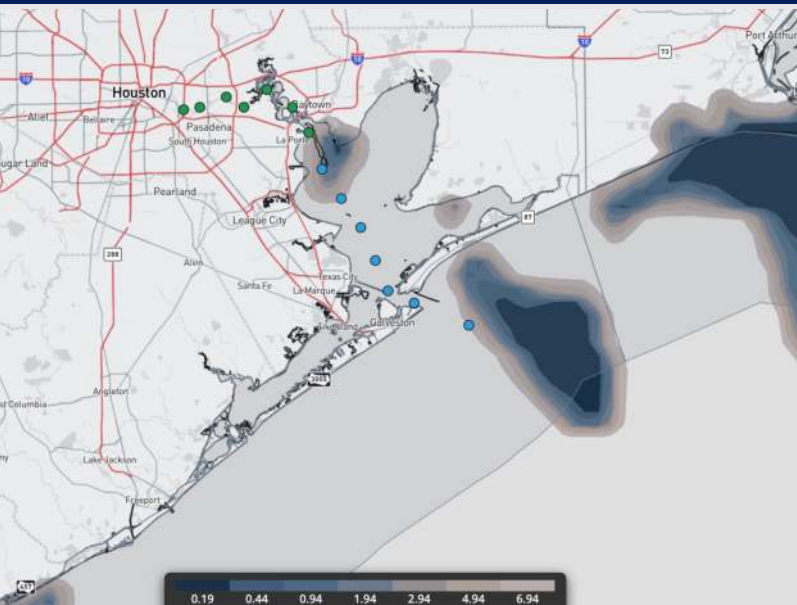
You can also access real-time forecast updates and 24/7 meteorological chat assistance on your [Clarity](#) app. Click [here](#) for login assistance.



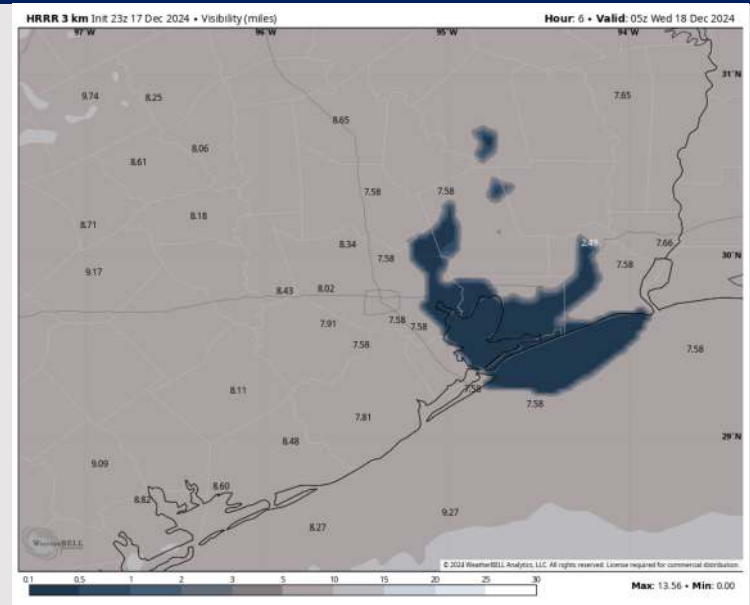
Houston Pilots Visibility Report



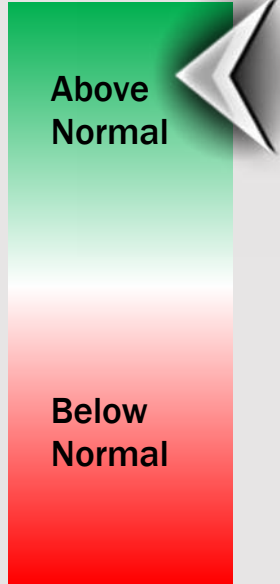
CURRENT VISIBILITY (7:00 PM TUE)



11 PM CST TUE VISIBILITY



Confidence



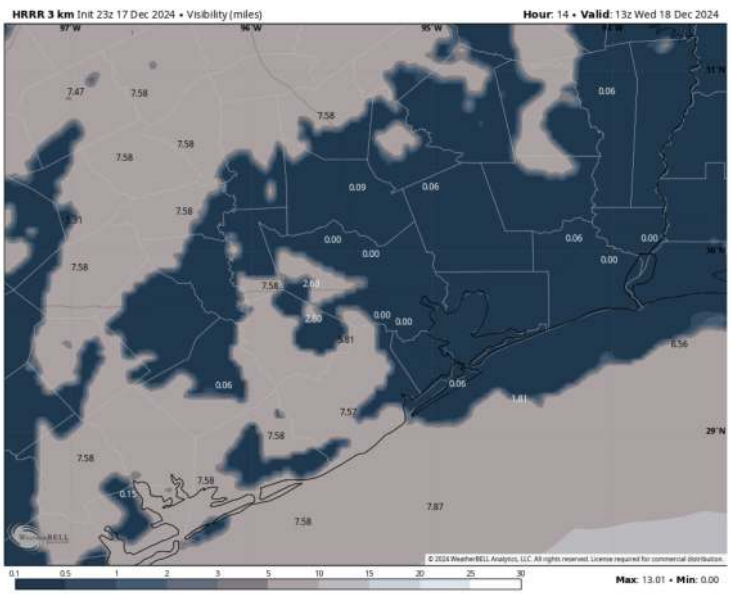
TIMEFRAME DISCUSSED	THREAT
Current - 12 AM WED	HIGH

- Anticipating between 7 – 9 PM, patchy sea fog will be possible for stations S of Morgan’s Point, with reduced visibilities of 1 – 2 miles.
- Confidence remains above normal that sea fog will become widespread, impacting all stations between 9PM – 11PM, with reduced visibilities of 0.5 - 1 mile favored, with intermittent periods of dense fog of less than 0.5 mile also a risk.
- Dense fog concerns will continue through Wednesday AM (see next visibility slide for the following 12 – 15 hours)

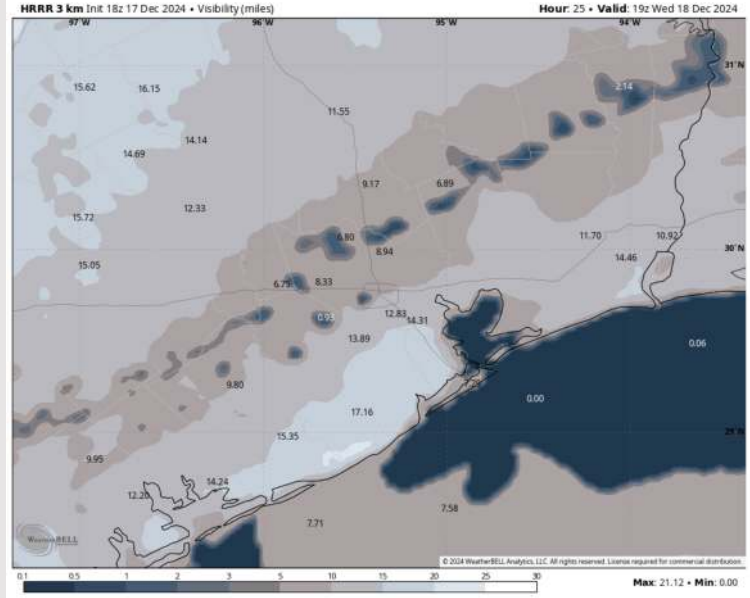
Houston Pilots Visibility Report



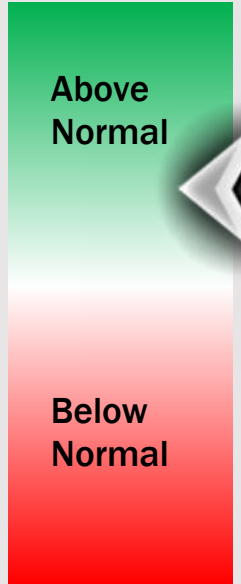
7 AM CST WED VISIBILITY



1 PM CST WED VISIBILITY



Confidence



TIMEFRAME DISCUSSED	THREAT
12 AM - 3 PM WED	HIGH

- Dense fog for all Stations is expected to persist with high confidence through WED AM, with visibilities of 0.5 mile or less in play through 10AM. Coverage is expected to be widespread.
- Beyond ~10 AM Wednesday, dense sea fog will slowly begin to recede for Stations N of Morgan's Point, with patchy reduced visibilities of 1 – 2 miles in play through ~1PM.
- For Stations S of Morgan's Point, not favoring dense sea fog to recede until after ~1PM, with patchy reduced visibilities of 1 – 2 miles in play through ~3PM just prior to when front passes.
- Confidence is high that fog will be pushed out around 3 PM WED for all stations as front moves through.

Houston Pilots Extended Range Visibility Report



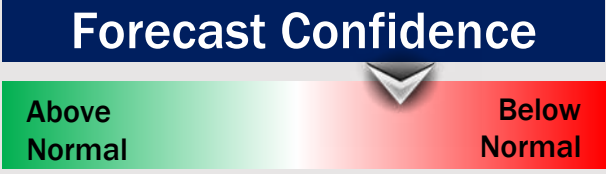
Friday 12/20/24

Monitoring a low-end risk for patchy fog/mist FRI AM.



Saturday 12/21/24

Fog is not favored for Saturday.



Sunday 12/22/24

Fog is not favored for Sunday.



Chance for Fog

Friday AM	Low-End
Friday PM	Unlikely
Saturday AM	Unlikely
Saturday PM	Unlikely
Sunday AM	Unlikely
Sunday PM	Unlikely

Houston Pilots Visibility Chart (miles)



Forecast Confidence



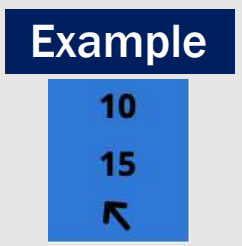
Visibility	Tue 2 pm	Tue 3 pm	Tue 4 pm	Tue 5 pm	Tue 6 pm	Tue 7 pm	Tue 8 pm	Tue 9 pm	Tue 10 pm	Tue 11 pm	Wed 12 am	Wed 1 am	Wed 2 am	Wed 3 am	Wed 4 am	Wed 5 am	Wed 6 am	Wed 7 am	Wed 8 am	Wed 9 am	Wed 10 am	Wed 11 am	Wed 12 pm	Wed 1 pm
Houston Pilots N - 610 Bridge	10	10	10	10	10	10	10	10	6.9	5.9	4.9	3.9	2.5	0.7	0.5	0.3	0.2	0.2	0.2	0.2	4.9	7.9	10	10
Houston Pilots M - Kinder 1	10	10	10	10	10	10	10	10	6.9	5.9	4.9	3.9	2.5	0.7	0.5	0.3	0.2	0.2	0.2	0.2	4.9	7.9	10	10
Houston Pilots L - Greens Bayou	10	10	10	10	10	10	10	10	6.9	6.9	4.9	3.9	2.9	0.7	0.5	0.3	0.2	0.2	0.2	0.2	4.9	7.9	10	10
Houston Pilots K - Shell Crude	10	10	10	10	10	10	10	10	8	6.9	4.9	4.9	2.9	0.7	0.5	0.3	0.2	0.2	0.2	0.2	4.9	7.9	10	10
Houston Pilots J - Lynchburg Ferries	10	10	10	10	10	10	10	10	6.9	6.9	4.9	4.9	2.9	0.7	0.5	0.3	0.2	0.2	0.2	0.2	3.9	7.9	10	10
Houston Pilots I - Exxon 3	10	10	10	10	10	10	10	10	8	6.9	5.9	4.9	2.9	0.7	0.5	0.3	0.2	0.2	0.2	0.2	4.9	7.9	10	10
Houston Pilots H - Morgans Point	10	10	10	10	10	10	10	10	8	6.9	5.9	4.9	2.9	0.7	0.3	0.3	0.2	0.2	0.2	0.2	4.9	7.9	10	10
Houston Pilots G - 75/76	10	10	10	10	10	10	10	10	8	6.9	6.9	5.9	4.9	0.7	0.3	0.3	0.2	0.2	0.2	0.2	4.9	7.9	4	8
Houston Pilots F - 63/64	10	10	10	10	10	10	10	10	8	6.9	6.9	5.9	4.9	4.9	2.9	2.9	0.7	0.7	0.2	0.2	4.9	7.9	2	7
Houston Pilots E - 51/52	10	10	10	10	10	10	10	10	8	6.9	6.9	5.9	4.9	5.9	3.9	3.9	2.9	2.9	2.9	2.9	5.9	9	1.1	4
Houston Pilots D - 37/38	10	10	10	10	10	10	10	10	8	6.9	6.9	5.9	4.9	5.9	4.9	3.9	2.9	2.9	3.9	3.9	5.9	9	1.1	4
Houston Pilots C - 25/26	10	10	10	10	10	10	10	10	8	6.9	5.9	5.9	4.9	5.9	4.9	4.9	3.9	3.9	3.9	3.9	5.9	9	1.1	1.6
Houston Pilots B - 11/12	10	10	10	10	10	10	10	9	6.9	6.9	5.9	5.9	4.9	5.9	4.9	4.9	3.9	3.9	3.9	3.9	6.9	9	0.2	0.2
Houston Pilots A - 1 & 2 Bravo	9	9	9	9	10	10	10	9	6.9	6.9	6.9	5.9	5.9	5.9	4.9	4.9	3.9	3.9	3.9	3.9	5.9	7.9	0	0.2

NOTE: This is automated data that may/may not agree with the official BAM thinking that's found on the daily slides or special visibility report slides. This data should be used as a guide only

Houston Pilots Wind Chart



Sustained wind 10 Knots
 Gusts 15 Knots
 Wind from the SE



Wind	Tue 2 pm	Tue 3 pm	Tue 4 pm	Tue 5 pm	Tue 6 pm	Tue 7 pm	Tue 8 pm	Tue 9 pm	Tue 10 pm	Tue 11 pm	Wed 12 am	Wed 1 am	Wed 2 am	Wed 3 am	Wed 4 am	Wed 5 am	Wed 6 am	Wed 7 am	Wed 8 am	Wed 9 am	Wed 10 am	Wed 11 am	Wed 12 pm	Wed 1 pm	
Houston Pilots N - 610 Bridge	8 15 ↖	8 16 ↖	8 16 ↖	8 16 ↖	8 15 ↖	7 14 ↖	6 13 ↖	6 13 ↖	6 12 ↖	5 10 ↖	3 9 ↖	3 8 ↖	3 7 ↖	2 7 ↖	2 6 ↖	1 5 ↖	1 3 ↖	1 3 ↖	1 3 ↖	1 3 ↖	1 5 ↖	3 7 ↖	5 9 ↖	6 13 ↖	
Houston Pilots M - Kinder 1	8 15 ↖	8 16 ↖	8 16 ↖	8 16 ↖	8 15 ↖	7 14 ↖	6 13 ↖	6 13 ↖	6 12 ↖	5 10 ↖	3 9 ↖	3 8 ↖	3 7 ↖	2 7 ↖	2 6 ↖	1 5 ↖	1 3 ↖	1 3 ↖	1 3 ↖	1 3 ↖	1 5 ↖	3 7 ↖	5 9 ↖	6 13 ↖	
Houston Pilots L - Greens Bayou	8 15 ↖	8 16 ↖	8 16 ↖	8 16 ↖	8 15 ↖	7 14 ↖	6 13 ↖	6 13 ↖	6 12 ↖	5 10 ↖	3 9 ↖	3 8 ↖	3 7 ↖	3 7 ↖	2 6 ↖	1 5 ↖	1 3 ↖	1 3 ↖	1 3 ↖	1 5 ↖	1 5 ↖	3 7 ↖	5 9 ↖	6 12 ↖	
Houston Pilots K - Shell Crude	8 15 ↖	8 16 ↖	8 16 ↖	8 16 ↖	8 15 ↖	7 13 ↖	6 13 ↖	6 12 ↖	6 12 ↖	5 10 ↖	3 9 ↖	3 8 ↖	3 7 ↖	3 6 ↖	2 6 ↖	1 5 ↖	1 3 ↖	1 3 ↖	1 3 ↖	1 3 ↖	1 5 ↖	3 6 ↖	5 9 ↖	6 12 ↖	
Houston Pilots J - Lynchburg Ferries	8 15 ↖	8 16 ↖	8 16 ↖	8 16 ↖	8 15 ↖	7 13 ↖	6 13 ↖	6 12 ↖	5 10 ↖	5 9 ↖	3 8 ↖	3 8 ↖	3 7 ↖	2 7 ↖	2 6 ↖	1 5 ↖	1 3 ↖	1 3 ↖	1 3 ↖	1 3 ↖	1 5 ↖	2 6 ↖	3 8 ↖	6 12 ↖	
Houston Pilots I - Exxon 3	9 16 ↖	10 17 ↖	10 17 ↖	10 16 ↖	10 15 ↖	9 14 ↖	9 14 ↖	8 13 ↖	8 13 ↖	8 12 ↖	7 10 ↖	6 9 ↖	6 8 ↖	6 7 ↖	5 8 ↖	5 7 ↖	3 6 ↖	3 5 ↖	2 5 ↖	2 5 ↖	2 5 ↖	3 5 ↖	3 7 ↖	5 9 ↖	6 12 ↖
Houston Pilots H - Morgans Point	9 16 ↖	10 16 ↖	10 16 ↖	10 16 ↖	10 15 ↖	9 14 ↖	8 13 ↖	8 13 ↖	8 12 ↖	7 12 ↖	6 9 ↖	6 9 ↖	6 8 ↖	5 7 ↖	5 7 ↖	3 6 ↖	3 5 ↖	3 5 ↖	2 5 ↖	2 5 ↖	2 5 ↖	3 6 ↖	3 8 ↖	5 10 ↖	
Houston Pilots G - 75/76	9 16 ↖	10 16 ↖	10 16 ↖	10 16 ↖	10 15 ↖	9 14 ↖	9 14 ↖	8 13 ↖	8 13 ↖	8 12 ↖	8 10 ↖	7 10 ↖	6 9 ↖	6 8 ↖	6 8 ↖	5 7 ↖	3 6 ↖	3 5 ↖	3 5 ↖	3 5 ↖	3 5 ↖	3 6 ↖	3 7 ↖	5 9 ↖	
Houston Pilots F - 63/64	8 15 ↖	8 15 ↖	9 16 ↖	9 15 ↖	9 15 ↖	9 13 ↖	8 13 ↖	8 13 ↖	8 13 ↖	8 12 ↖	7 10 ↖	7 10 ↖	6 8 ↖	6 8 ↖	6 8 ↖	3 7 ↖	3 5 ↖	3 5 ↖	3 5 ↖	3 5 ↖	3 5 ↖	3 6 ↖	3 7 ↖	3 8 ↖	
Houston Pilots E - 51/52	8 14 ↖	8 14 ↖	8 15 ↖	8 14 ↖	8 14 ↖	8 12 ↖	8 12 ↖	8 12 ↖	8 12 ↖	7 12 ↖	7 10 ↖	6 9 ↖	6 8 ↖	6 7 ↖	5 7 ↖	3 6 ↖	3 5 ↖	3 5 ↖	3 5 ↖	3 5 ↖	3 5 ↖	2 6 ↖	3 7 ↖	3 8 ↖	
Houston Pilots D - 37/38	8 14 ↖	8 14 ↖	8 15 ↖	8 14 ↖	8 13 ↖	8 12 ↖	8 12 ↖	8 12 ↖	8 12 ↖	7 10 ↖	7 10 ↖	6 9 ↖	6 8 ↖	6 7 ↖	5 7 ↖	3 6 ↖	3 5 ↖	3 5 ↖	2 5 ↖	2 5 ↖	2 5 ↖	3 6 ↖	3 7 ↖	3 8 ↖	
Houston Pilots C - 25/26	8 14 ↖	8 14 ↖	8 15 ↖	8 13 ↖	8 13 ↖	8 12 ↖	8 12 ↖	8 12 ↖	8 12 ↖	7 10 ↖	6 10 ↖	6 9 ↖	6 8 ↖	5 7 ↖	5 7 ↖	3 6 ↖	3 5 ↖	3 5 ↖	3 5 ↖	3 5 ↖	3 5 ↖	3 6 ↖	3 7 ↖	3 8 ↖	
Houston Pilots B - 11/12	8 13 ↖	8 13 ↖	8 14 ↖	8 13 ↖	8 13 ↖	7 12 ↖	7 12 ↖	7 12 ↖	7 12 ↖	6 10 ↖	6 10 ↖	6 9 ↖	6 8 ↖	5 8 ↖	5 8 ↖	3 7 ↖	3 6 ↖	3 5 ↖	3 5 ↖	3 5 ↖	3 5 ↖	3 6 ↖	3 7 ↖	3 8 ↖	
Houston Pilots A - 1 & 2 Bravo	8 13 ↖	8 13 ↖	8 14 ↖	8 13 ↖	8 14 ↖	8 13 ↖	8 13 ↖	8 13 ↖	8 13 ↖	8 13 ↖	8 12 ↖	8 10 ↖	7 9 ↖	6 9 ↖	6 9 ↖	6 8 ↖	5 7 ↖	5 6 ↖	5 6 ↖	5 6 ↖	3 7 ↖	3 6 ↖	3 7 ↖	3 8 ↖	

NOTE: This is automated data that may/may not agree with the official BAM thinking that's found on the daily slides. This data should be used as a guide only.

Forecast Discussion

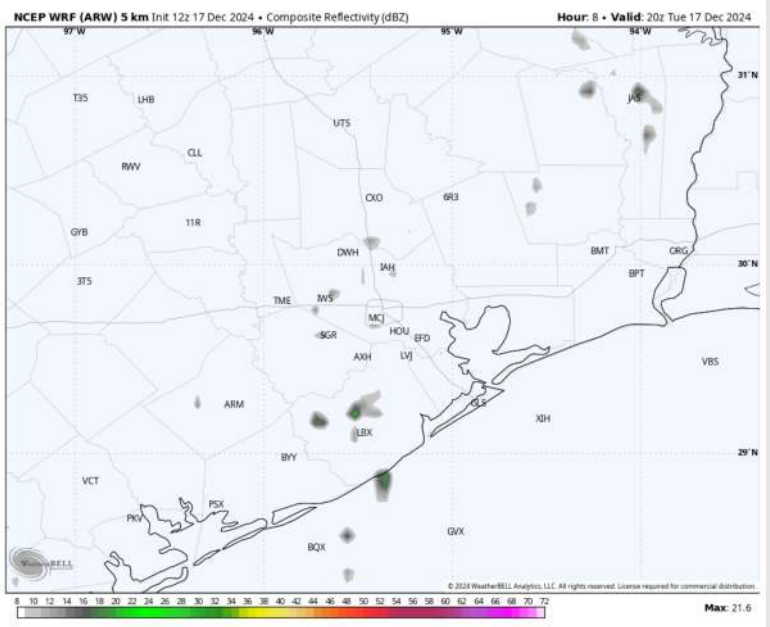
Precip: Isolated (10-20%) chances of light showers will be in play for all Stations through 4 PM. Most showers are favored to stay off to the west.

Wind: Winds will be out of the SE throughout the PM. **N of Morgan's Point:** Winds will be at 5 – 10 kts throughout the rest of today. **S of Morgan's Point:** Winds will be at 13 - 18 kts for the rest of today.

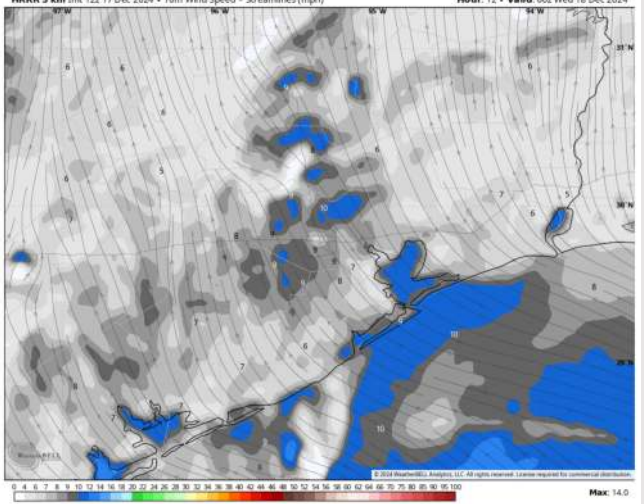
Low Temps: **N of Morgan's Point:** Mid 60s F. **S of Morgan's Point:** Lower 60s F.

Visibility: Patchy to widespread sea fog will be a continued threat this PM. Fog may become slightly patchy with passing showers however the threat is expected to last throughout the day. Check corresponding visibility slide for more information.

Precip Image: 11 AM CT

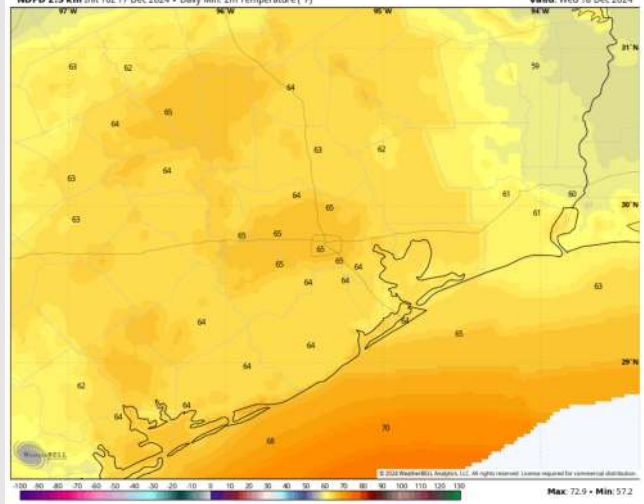


HRRR 3 km Init 12z 17 Dec 2024 • 10m Wind Speed • Streamlines (mph) Hour: 12 • Valid: 00z Wed 18 Dec 2024



Wind Speed:
6 PM CT

NDFD 2.5 km Init 16z 17 Dec 2024 • Daily Min, 2m Temperature (°F) Valid: Wed 18 Dec 2024



Low Temps
WED AM

Houston Pilots: WED. 12/18/2024



Forecast Discussion

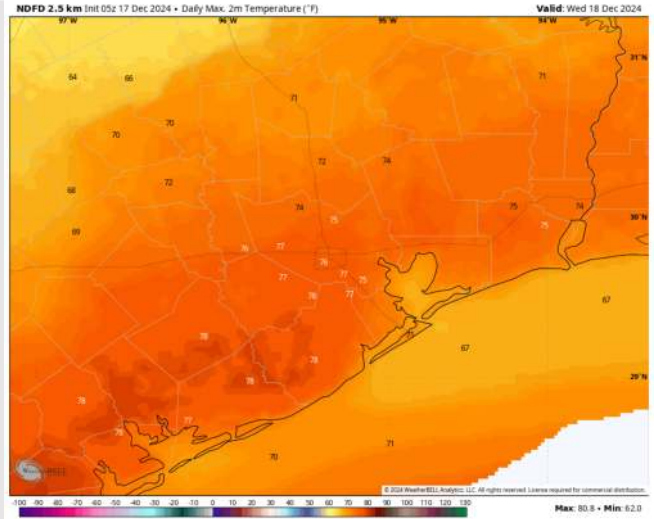
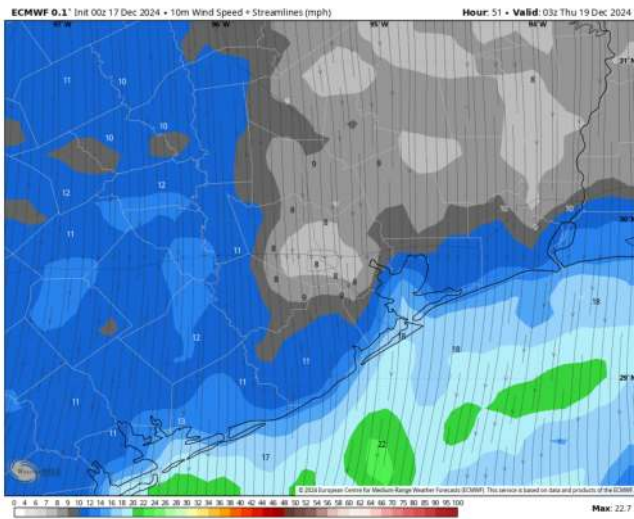
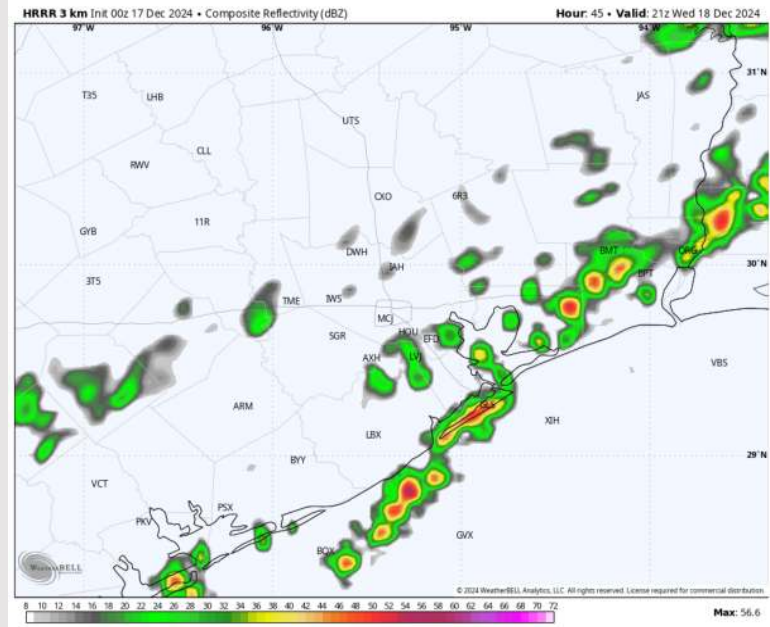
Precip: Scattered storms will pass over Stations between 1 - 4 PM with a passing cold front. Main risks with storms will be lightning and gusty winds.

Wind: Winds will be out of the SE through 10 AM before shifting clockwise out of the N/NW and remaining there for the rest of the day. **N of Morgan's Point:** Winds will be at 2-7 kts through 11 AM, increasing slightly to 4-9 kts after that time. **S of Morgan's Point:** Winds will be at 4-9 kts through 6 PM, increasing to 10-15 kts after that time. **Gusts can reach 25-30 kts N of Morgan's Point by 1 PM** where they will then push S throughout the PM.

High Temps: **N of Morgan's Point:** Mid 70s F. **S of Morgan's Point:** Upper 60s F.

Visibility: Tuesday's dense, widespread fog threat will last into WED AM before front pushes through. See Tue → Wed fog slide for more details.

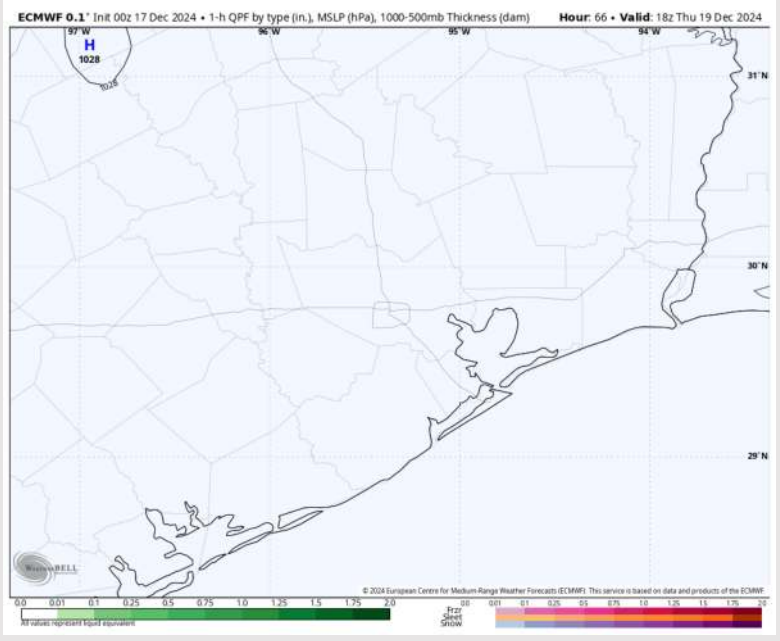
Precip Image: 3 PM CT



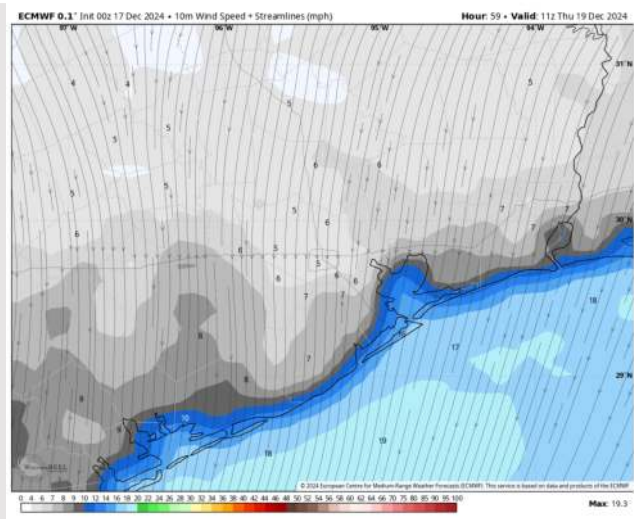
Forecast Discussion

- Precip:** Favoring dry conditions for Thursday.
- Wind:** Winds will be out of the N/NE through 1 PM, becoming variable after that time. **N of Morgan's Point:** Winds will be at 3-8 kts throughout the day. **S of Morgan's Point:** Winds will be at 10-15 kts through 8 AM, decreasing to 4-9 kts after that time.
- High Temps:** **N of Morgan's Point:** Mid 60s F. **S of Morgan's Point:** Low 60s F.
- Visibility:** Not favoring any visibility issues for Thursday.

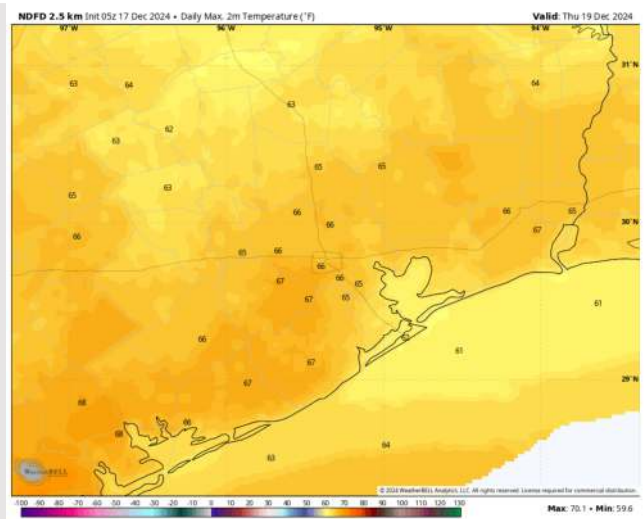
Precip Image: 12 PM CT



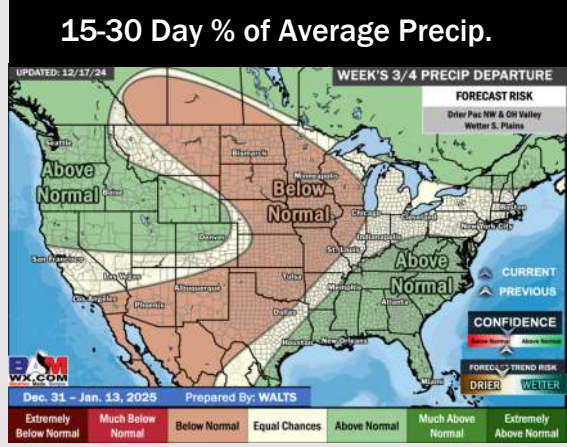
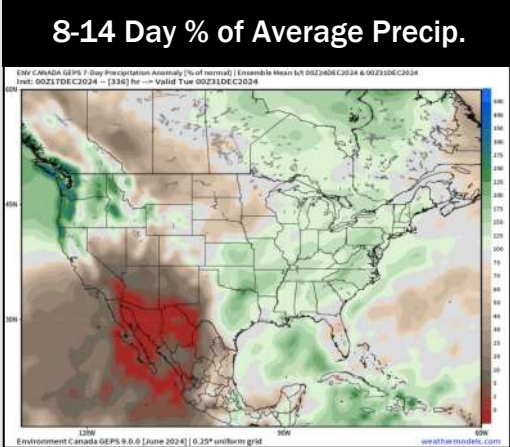
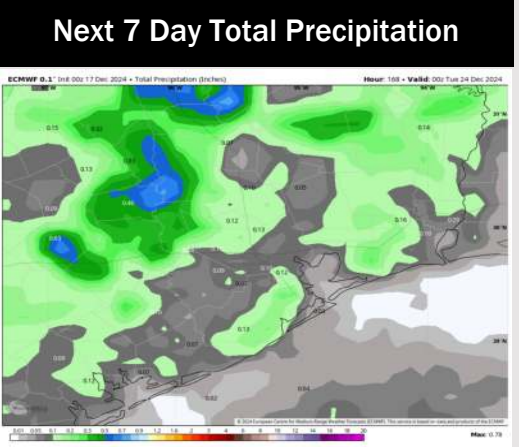
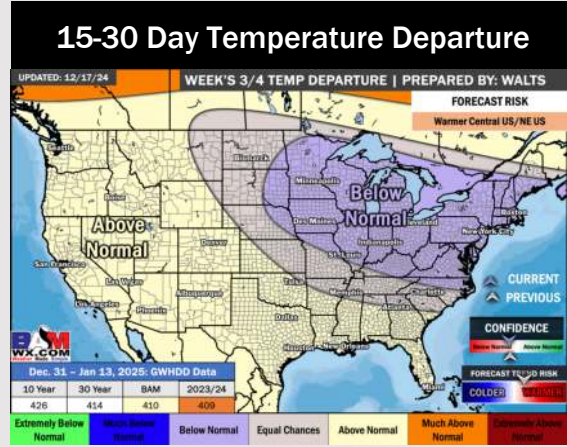
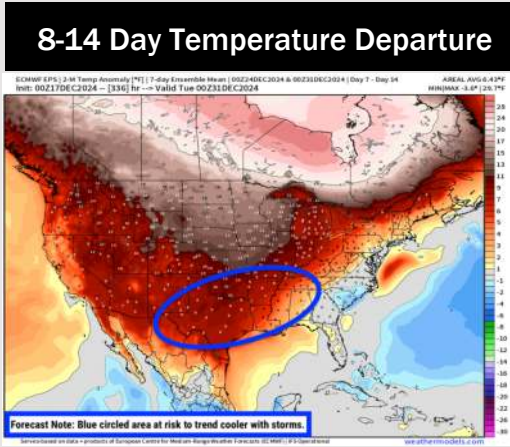
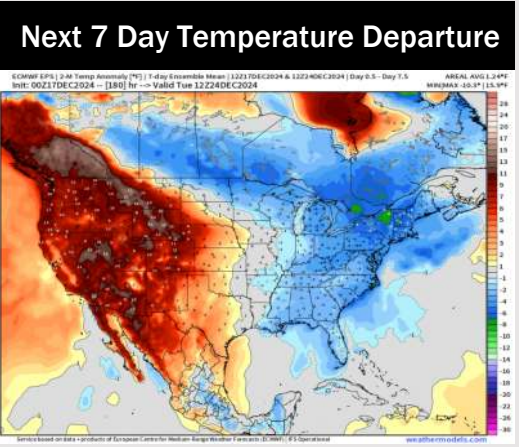
Wind Speed:
4 PM CT



High Temps
Thursday



Houston Pilots: 12/17/24



- Temps are expected to be near normal for the week 1 timeframe. Scattered rain chances are favored through the week.
- Above normal temperatures are favored for week 2. Slightly cooler trends are possible due to storms, but warm regardless. Favoring near normal rainfall week 2.
- Above normal temperatures and above normal precipitation chances are expected for the weeks 3/4 timeframe.