

Houston Pilots Forecast Package



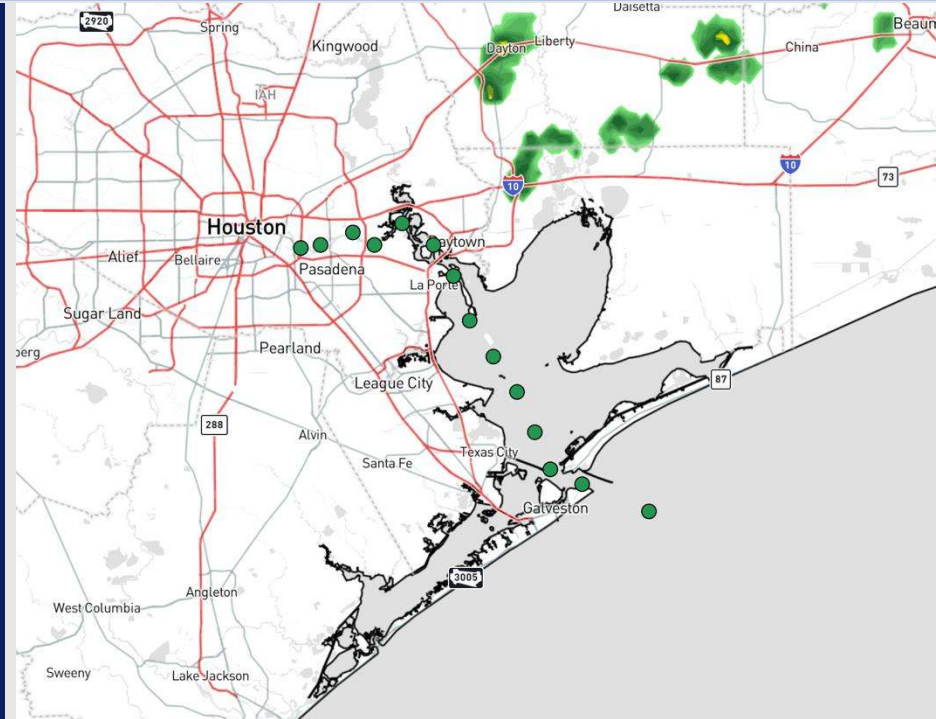
Updated: 12:50 PM CT

Monday, December 16, 2024

Forecaster: Elliott/Kleitsch

Weather Headlines

- Low-end risks for light showers will be in play over the next 48 hours.
- Storms move into the area late WED AM, bringing risks for lightning and 25 kt gusts.
- **Patchy to widespread sea fog risk still in play for this PM through WED AM. See visibility slides for more details.**



Current Radar: 12:50 PM CT

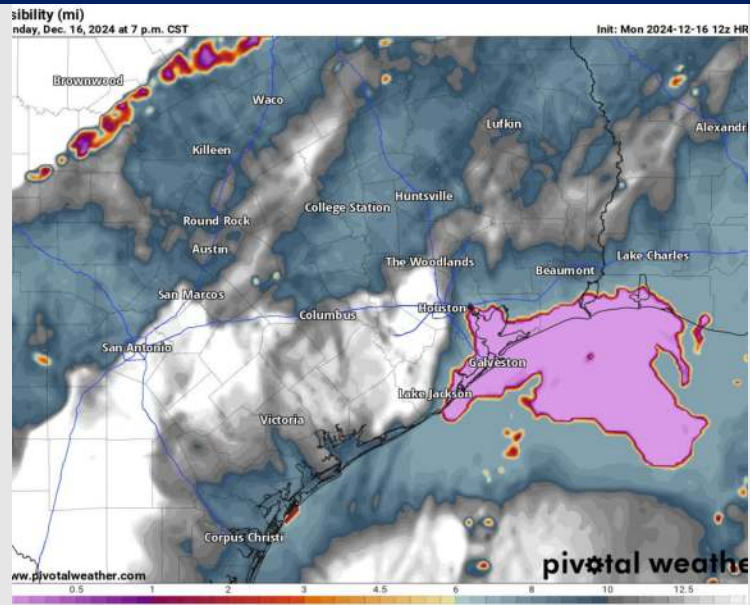
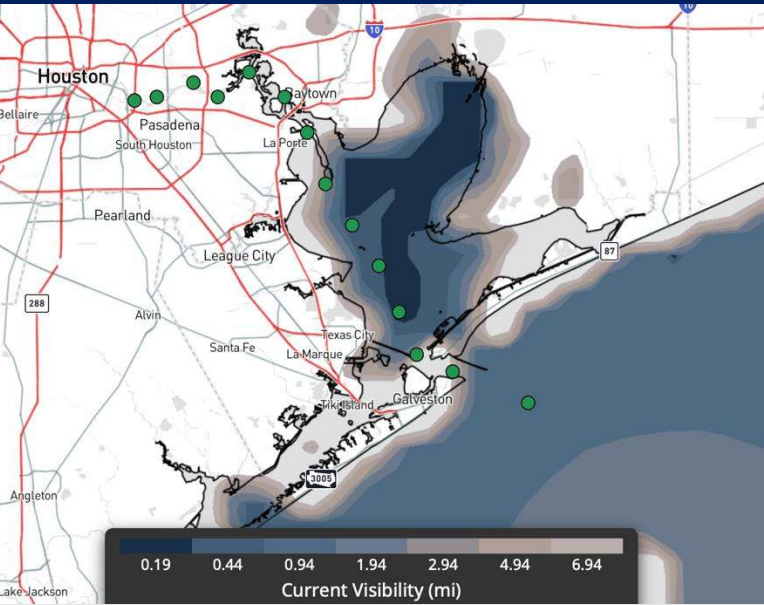
As always, please do not hesitate to reach out to us with any forecast questions at **(317)-560-8122**. Press **1** for forecast questions.

You can also access real-time forecast updates and 24/7 meteorological chat assistance on your [Clarity](#) app. Click [here](#) for login assistance.

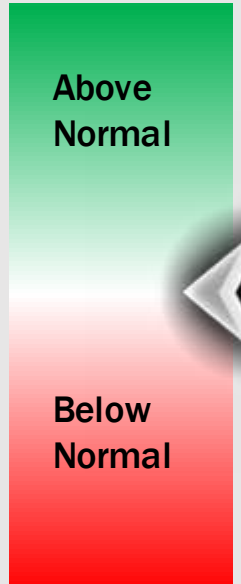
Houston Pilots Visibility Report



CURRENT VISIBILITY (12:00 PM MON) 7 PM CST MON VISIBILITY



Confidence



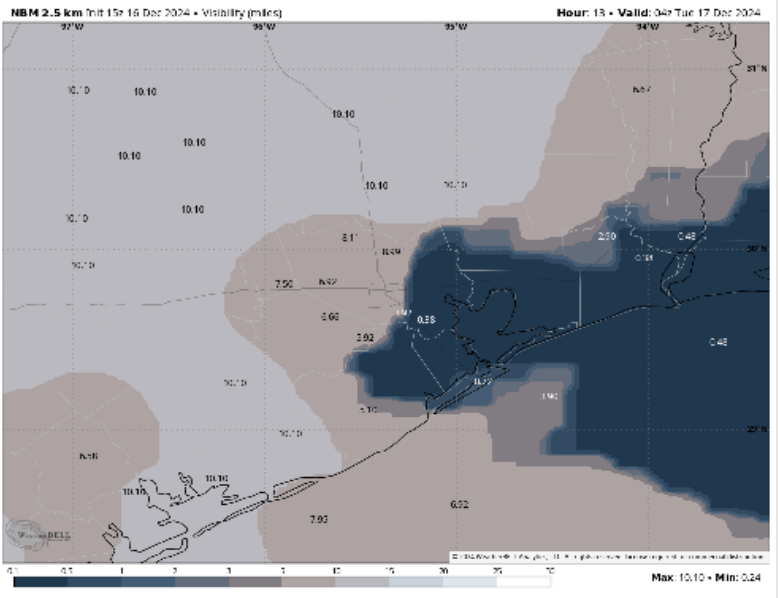
TIMEFRAME DISCUSSED	THREAT
Current – 9 PM MON	MED-HIGH

- Current visibilities sit at 2– 4 miles for Stations S. of Morgan’s Point. A few patchy areas of dense fog with visibilities less than 0.5 mile are prominent. No visibility impacts are currently happening for Stations N. of Morgan’s Point.
- Coverage of fog will be on the increase after 3 PM, with visibilities of 1 – 2 miles and instances of visibilities less than 0.5 mile between Morgan’s Point and the Boarding Station.
- Dense fog is anticipated to gradually expand northward to include Stations N. of Morgan’s Point by 9PM. The greatest impacts are expected to occur after this time.

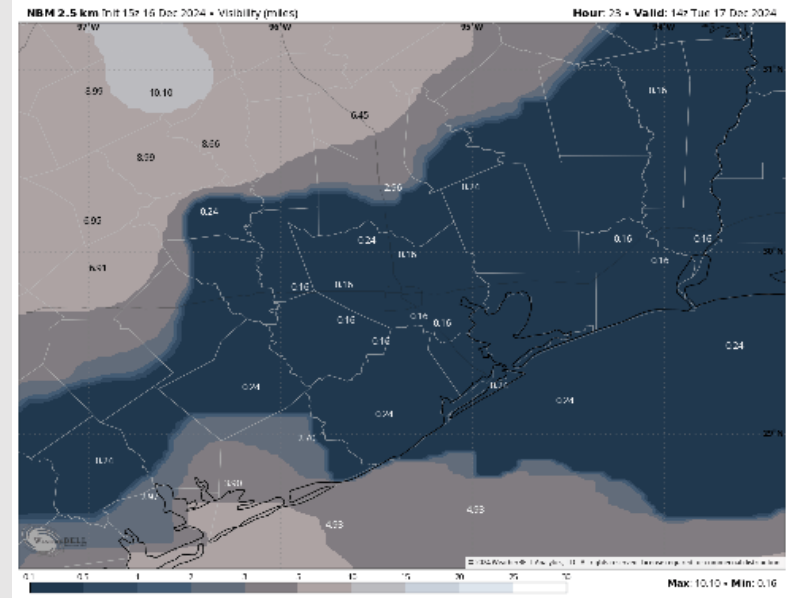
Houston Pilots Visibility Report



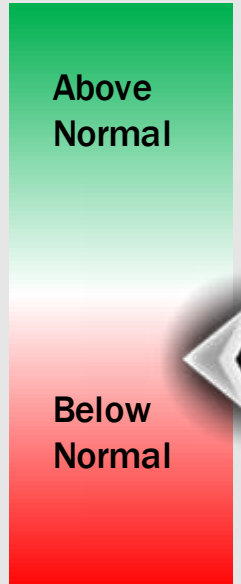
10 PM CST MON VISIBILITY



8 AM CST WED VISIBILITY



Confidence



TIMEFRAME DISCUSSED	THREAT
9 PM MON - 11 AM WED	High

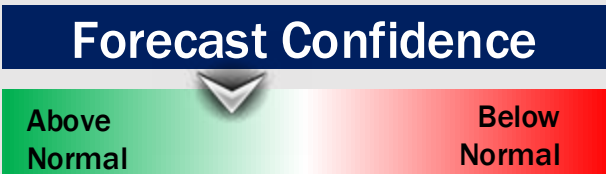
- By 9PM MON, fog is expected to become the most dense and widespread, dropping to <0.5 mile visibility across all Stations.
- Fog will remain widespread and dense through the overnight, receding slightly and becoming more patchy by 10 AM TUE to cover Morgan's Point and Stations S. as light spotty showers work through.
- Between 11 AM – 5 PM, fog will remain dense for stations 51/52 through the Boarding Station. After 5 PM, fog will again creep N into Morgan's Point, keeping visibility at 0.5 mile or less within the Bay to the Boarding Station and at 2 – 4 miles N of Morgan's Point.
- Expecting this threat to until ~11 AM Wednesday once the front works in and winds shift.

Houston Pilots Extended Range Visibility Report



Thursday 12/18/24

Fog is not favored for Thursday.



Saturday 12/20/24

Fog is not favored for Saturday.



Friday 12/19/24

Monitoring a low-end risk for patchy fog/mist FRI AM.



Chance for Fog

Thursday AM	Unlikely
Thursday PM	Unlikely
Friday AM	Low-End
Friday PM	Unlikely
Saturday AM	Unlikely
Saturday PM	Unlikely

Houston Pilots Visibility Chart (miles)



Forecast Confidence



Visibility	Mon 2 pm	Mon 3 pm	Mon 4 pm	Mon 5 pm	Mon 6 pm	Mon 7 pm	Mon 8 pm	Mon 9 pm	Mon 10 pm	Mon 11 pm	Tue 12 am	Tue 1 am	Tue 2 am	Tue 3 am	Tue 4 am	Tue 5 am	Tue 6 am	Tue 7 am	Tue 8 am	Tue 9 am	Tue 10 am	Tue 11 am	Tue 12 pm	Tue 1 pm	
Houston Pilots N - 610 Bridge	10	10	10	10	10	10	10	9	6.9	3.9	2.9	1.1	0.2	0.2	0.2	0.3	0.2	0.2	0.2	0.2	0.2	2.9	4.9	6.9	
Houston Pilots M - Kinder 1	10	10	10	10	10	10	10	9	6.9	3.9	2.9	1.1	0.2	0.2	0.2	0.3	0.2	0.2	0.2	0.2	0.2	2.9	4.9	6.9	
Houston Pilots L - Greens Bayou	10	10	10	10	10	10	9	8	0.5	0.5	2.9	0.2	0.5	0.2	0.2	0.3	0.2	0.2	0.2	0.2	0.2	2.9	4.9	6.9	
Houston Pilots K - Shell Crude	10	10	10	10	10	10	9	5.9	0.5	0.5	2.9	0.2	0.5	0.2	0.2	0.3	0.2	0.2	0.2	0.2	0.2	2.9	4.9	6.9	
Houston Pilots J - Lynchburg Ferries	10	10	10	10	10	10	6.9	0.7	0.5	0.5	2.9	0.2	0.5	0.2	0.2	0.3	0.2	0.2	0.2	0.2	0.2	0.5	3.9	5.9	6.9
Houston Pilots I - Exxon 3	10	10	10	10	10	10	5.9	0.7	0.5	0.5	0.2	0.2	0.5	0.5	0.5	0.3	0.2	0.2	0.2	0.2	0.2	0.7	3.9	6.9	9
Houston Pilots H - Morgans Point	10	10	10	10	3.9	2.5	3.9	0.7	0.5	0.5	0.2	0.2	0.5	0.2	0.2	0.3	0.2	0.2	0.2	0.2	0.2	3.9	4.9	6.9	
Houston Pilots G - 75/76	4.9	5.9	10	2	1.6	2.5	2.9	2	0.7	0.5	0.5	0.2	0.2	0.2	0.2	0.3	0.2	0.2	0.2	0.2	0.2	3.9	2	5	
Houston Pilots F - 63/64	4.9	5.9	10	1.1	1.6	1.6	2.9	2	0.7	0.5	0.5	0.2	0.2	0.2	0.2	0.3	0.2	0.2	0.2	0.2	0.2	3.9	1.6	4	
Houston Pilots E - 51/52	9	10	10	1.1	1.6	1.6	2.9	2	0.7	0.5	0.5	0.2	0.2	0.2	0.2	0.3	0.2	0.2	0.2	0.2	0.2	3.9	1.1	0.7	
Houston Pilots D - 37/38	10	10	10	1.1	5.9	1.6	2.9	2	0.7	0.5	1.1	0.2	0.2	0.2	0.2	0.3	0.2	0.2	0.2	0.2	0.2	3.9	0.2	0.2	
Houston Pilots C - 25/26	10	10	10	1.1	5.9	1.6	2.9	2	4.9	1.1	1.1	0.2	0.2	0.2	0.2	0.3	0.2	0.2	0.2	0.2	0.2	3.9	0.2	0.2	
Houston Pilots B - 11/12	10	10	1.1	1.1	6.9	1.6	2.9	4.9	4.9	0.5	2.9	0.2	0.2	0.2	0.2	0.3	0.2	0.2	0.2	0.2	0.2	3.9	0	0.2	
Houston Pilots A - 1 & 2 Bravo	6.9	1.1	1.1	6.9	6.9	1.6	2.9	3.9	1.6	3.9	2.9	2	0.5	0.5	0.5	0.3	0.2	0.2	0.2	0.2	3.9	4.9	0	0.2	

NOTE: This is automated data that may/may not agree with the official BAM thinking that's found on the daily slides or special visibility report slides. This data should be used as a guide only

Houston Pilots Wind Chart



Sustained wind 10 Knots
 Gusts 15 Knots
 Wind from the SE

Example

10
 15
 ↙

Wind	Mon 2 pm	Mon 3 pm	Mon 4 pm	Mon 5 pm	Mon 6 pm	Mon 7 pm	Mon 8 pm	Mon 9 pm	Mon 10 pm	Mon 11 pm	Tue 12 am	Tue 1 am	Tue 2 am	Tue 3 am	Tue 4 am	Tue 5 am	Tue 6 am	Tue 7 am	Tue 8 am	Tue 9 am	Tue 10 am	Tue 11 am	Tue 12 pm	Tue 1 pm
Houston Pilots N - 610 Bridge	7 ↑ 15	7 ↑ 15	7 ↑ 15	7 ↑ 15	7 13	6 13	6 10	5 9	5 9	3 9	3 9	3 8	3 8	3 7	2 6	2 6	2 6	2 5	2 6	3 7	3 8	5 9	6 12	6 13
Houston Pilots M - Kinder 1	7 ↑ 15	7 ↑ 15	8 ↑ 15	7 ↑ 15	7 13	6 13	6 10	5 9	5 9	3 9	3 9	3 8	3 8	3 7	2 6	2 6	2 6	2 5	2 6	3 7	3 8	5 9	6 12	6 13
Houston Pilots L - Greens Bayou	8 15	8 15	8 15	8 15	7 13	6 13	6 10	5 10	5 9	3 9	3 9	3 8	3 8	3 7	2 6	2 6	2 6	2 5	2 6	3 7	3 8	5 9	6 12	6 13
Houston Pilots K - Shell Crude	8 15	8 15	8 15	8 15	7 13	6 13	6 10	5 9	5 9	3 9	3 9	3 8	3 8	3 7	2 6	2 6	2 6	2 5	2 6	3 7	3 8	5 9	6 12	6 13
Houston Pilots J - Lynchburg Ferries	7 14	8 15	8 15	8 15	7 13	6 13	6 10	5 9	5 9	3 9	3 8	3 8	3 7	2 7	2 6	2 6	2 5	2 5	2 6	3 7	3 8	5 9	6 12	6 13
Houston Pilots I - Exxon 3	8 15	9 15	10 16	10 15	9 14	9 13	8 12	8 12	8 10	7 10	7 9	6 10	6 9	6 8	5 8	5 7	3 7	3 6	3 7	5 8	5 9	6 9	6 13	7 14
Houston Pilots H - Morgans Point	8 15	9 15	9 15	9 15	9 14	8 13	8 12	8 10	7 10	7 9	6 9	6 9	6 8	6 8	5 7	5 7	3 7	3 6	3 7	5 8	5 9	6 12	6 13	
Houston Pilots G - 75/76	8 15	8 15	9 15	9 15	9 14	8 13	8 12	8 12	8 10	8 10	7 10	7 10	6 9	6 9	6 8	6 8	5 7	5 7	5 7	6 9	6 9	6 10	7 13	8 14
Houston Pilots F - 63/64	7 14	8 15	8 14	8 15	8 13	8 13	8 12	8 10	8 10	7 10	7 9	7 10	6 9	6 9	6 8	6 8	5 7	5 7	5 7	6 9	6 9	6 10	7 12	7 13
Houston Pilots E - 51/52	7 13	7 14	7 13	8 13	8 13	8 12	8 10	8 10	8 10	7 9	7 9	7 10	6 9	6 8	6 8	5 7	5 7	5 7	5 7	6 8	6 9	6 10	7 12	8 13
Houston Pilots D - 37/38	7 13	7 13	7 13	7 13	7 12	8 12	7 10	7 10	7 10	7 9	6 9	6 9	6 8	6 8	6 7	5 7	5 7	5 7	5 7	6 8	6 9	6 10	7 12	8 13
Houston Pilots C - 25/26	7 13	7 13	7 13	7 13	7 12	7 12	7 10	7 9	7 9	6 9	6 9	6 8	6 8	6 8	6 7	5 7	5 7	5 7	5 7	6 8	6 9	6 10	7 13	8 13
Houston Pilots B - 11/12	7 13	7 12	7 12	7 12	7 12	6 12	6 10	6 9	6 9	6 9	6 9	5 9	5 9	5 8	5 8	5 8	5 8	5 8	5 8	6 9	6 9	7 10	7 12	8 13
Houston Pilots A - 1 & 2 Bravo	7 13	6 12	6 12	7 12	7 13	8 13	8 12	8 12	8 12	7 10	7 10	7 10	6 9	6 9	6 9	6 9	6 9	6 9	6 9	6 10	7 10	8 12	8 13	8 13

NOTE: This is automated data that may/may not agree with the official BAM thinking that's found on the daily slides. This data should be used as a guide only.

Forecast Discussion

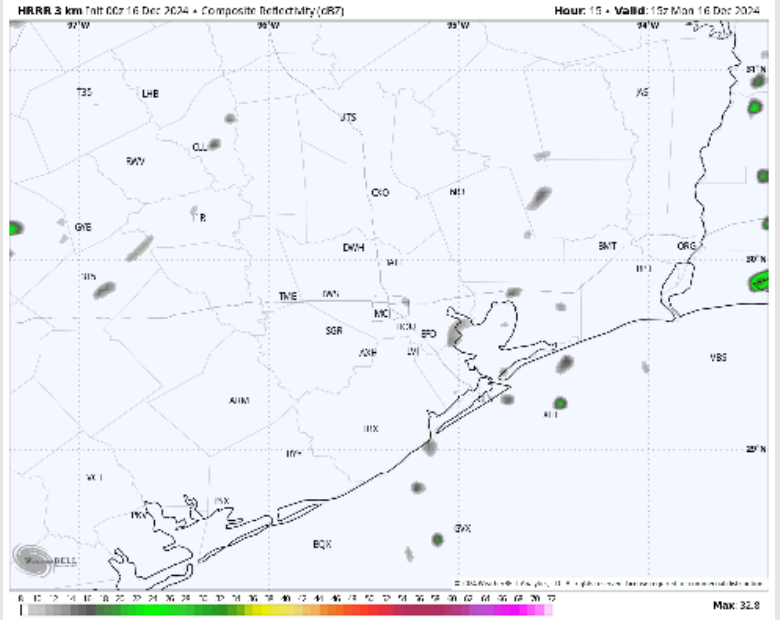
Precip: Isolated (20%) showers and pockets of drizzle will be possible through the rest of the PM for primarily the Boarding Station.

Wind: Winds will be out of the SE throughout the rest of the day. **N of Morgan's Point:** Winds will be at 5 – 10 kts for the PM. **S of Morgan's Point:** Winds will be at 5 – 10 kts throughout the day.

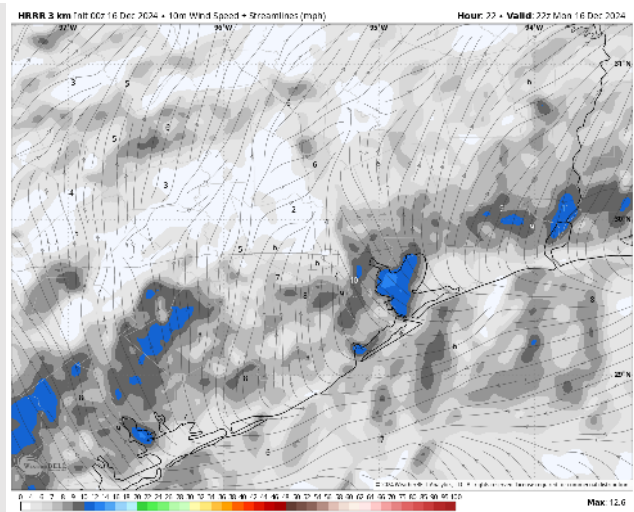
Low Temps: **N of Morgan's Point:** Mid 60s F. **S of Morgan's Point:** Low 60s F.

Visibility: Patchy sea fog continues to be a risk this afternoon and evening. Check the corresponding visibility slide for more information.

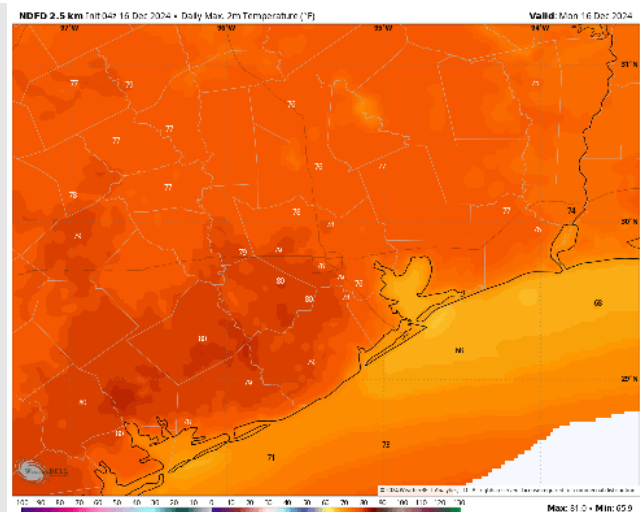
Precip Image: 9 AM CT



**Wind Speed:
4 PM CT**



**Low Temps
TUE AM**



Houston Pilots: TUE. 12/17/2024



Forecast Discussion

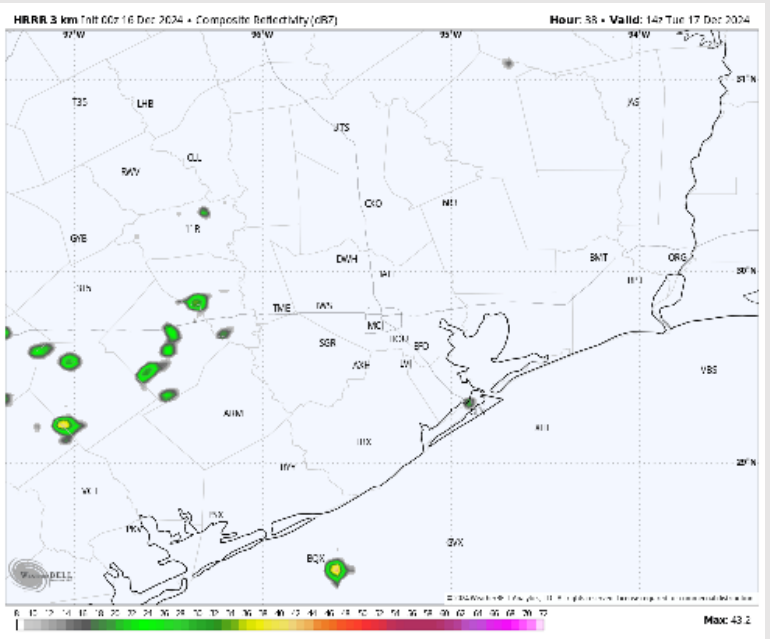
Precip: Isolated (10%) chances of light showers will be in play for all Stations between 4 AM and 4 PM. Most showers are favored to stay off to the west.

Wind: Winds will be out of the SE throughout the day. **N of Morgan's Point:** Winds will be at 2 - 7 kts throughout Tuesday. **S of Morgan's Point:** Winds will be at 4 - 10 kts for Tuesday.

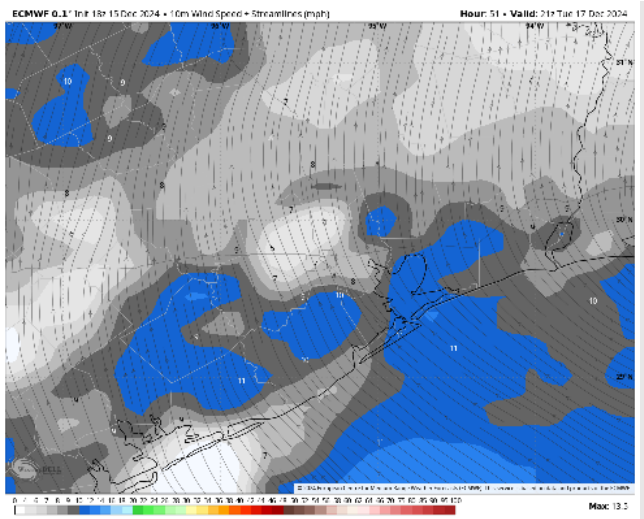
High Temps: **N of Morgan's Point:** Mid to upper 70s F. **S of Morgan's Point:** Lower 70s F.

Visibility: Widespread sea fog will be likely for Tuesday. Fog may become slightly patchy with passing showers, however the threat is expected all day. Check corresponding visibility slide for more information.

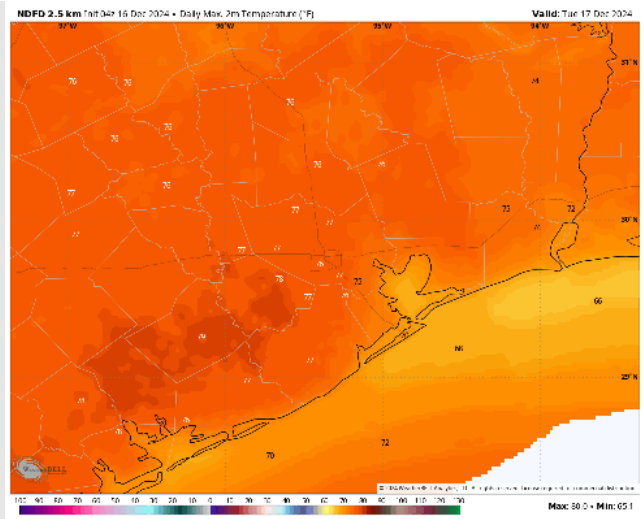
Precip Image: 8 AM CT



Wind Speed:
3 PM CT



High Temps
Tuesday



Houston Pilots: WED. 12/18/2024



Forecast Discussion

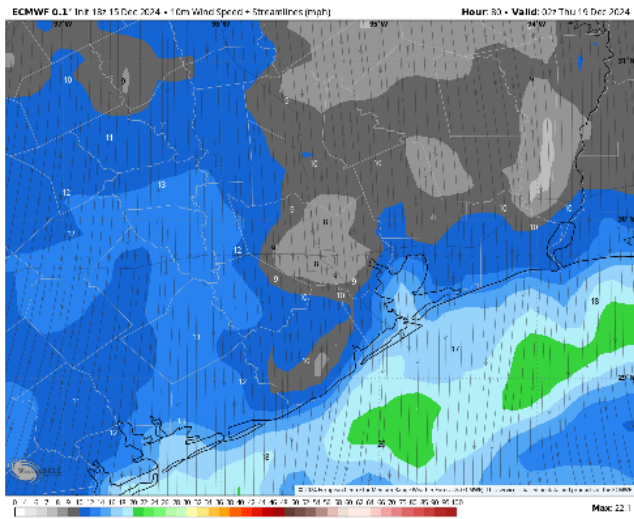
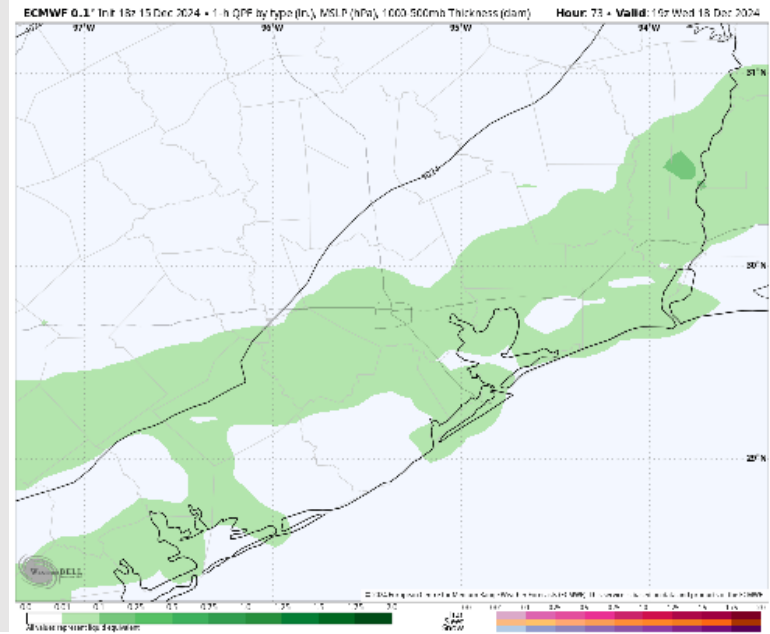
Precip: Scattered storms will pass over Stations between 11 AM and 4 PM with a passing cold front. Main risks with storms will be lightning and gusty winds.

Wind: Winds will be out of the SE through 10 AM before shifting clockwise out of the N/NW and remaining there for the rest of the day. **N of Morgan's Point:** Winds will be at 2-7 kts through 11 AM, increasing slightly to 4-9 kts after that time. **S of Morgan's Point:** Winds will be at 4-9 kts through 6 PM, increasing to 10-15 kts after that time. Gusts may reach 25 kts N of Morgan's Point.

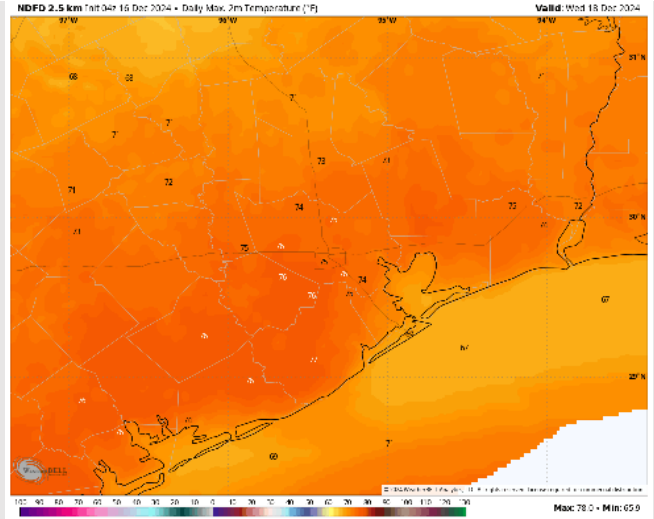
High Temps: **N of Morgan's Point:** Mid 70s F. **S of Morgan's Point:** Upper 60s F.

Visibility: Tuesday's dense, widespread fog threat will last into WED AM before front pushes through. See Tue → Wed fog slide for more details.

Precip Image: 1 PM CT

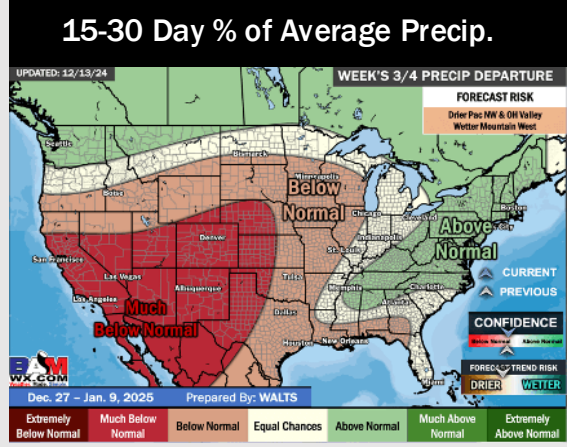
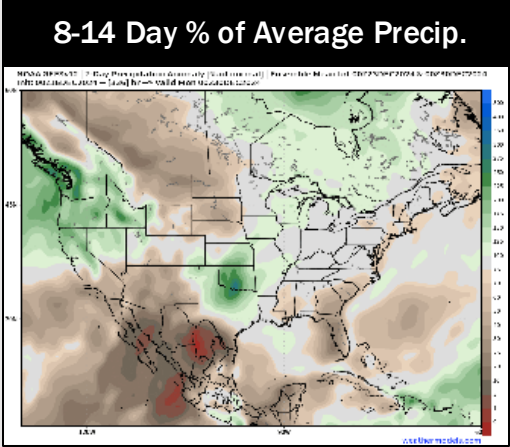
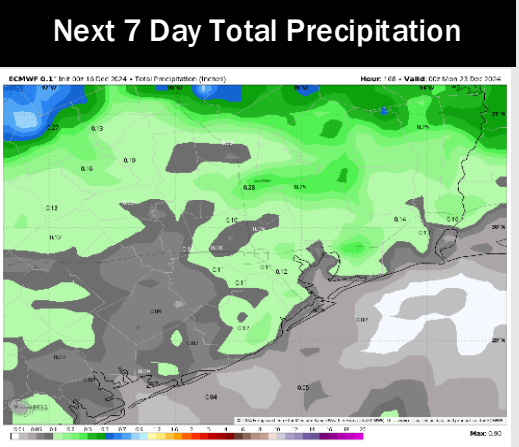
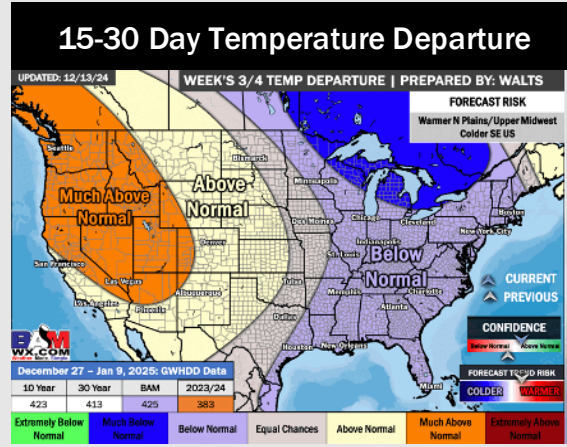
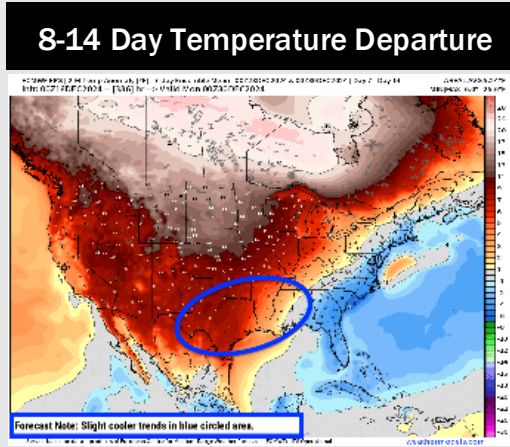
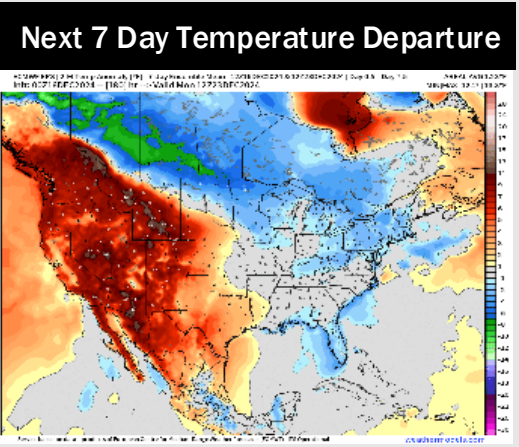


Wind Speed
8 PM CT



High Temps
Wednesday

Houston Pilots: 12/16/24



- Temps are expected to be above normal for the week 1 timeframe. Scattered rain chances are favored through the week.
- Above normal temperatures are favored for week 2. Favoring slightly below normal rainfall week 2. The risk to this forecast is that we trend a touch cooler and wetter.
- Below normal temperatures and below-normal precipitation chances are expected for the weeks 3/4 timeframe.