

# Houston Pilots Forecast Package



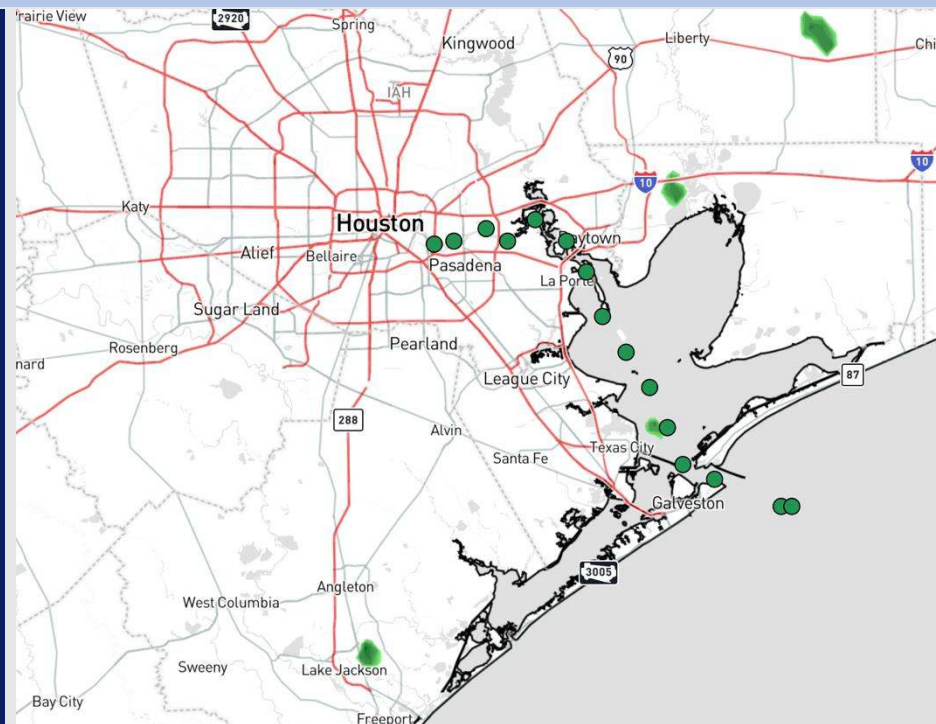
Updated: 4:00 AM CT

Sunday, December 15, 2024

Forecaster: Adam Feick

## Weather Headlines

- Low-end risks for light showers will be in play over the next 72 hours.
- Winds expected to remain calm over the next 72 hours, rarely exceeding 12 kts.
- **Patchy to Widespread Sea Fog will be possible starting this AM and lasting through the WED AM. Check the Visibility slides below.**



Current Radar: 3:52 AM CT

As always, please do not hesitate to reach out to us with any forecast questions at **(317)-560-8122**. Press 1 for forecast questions.

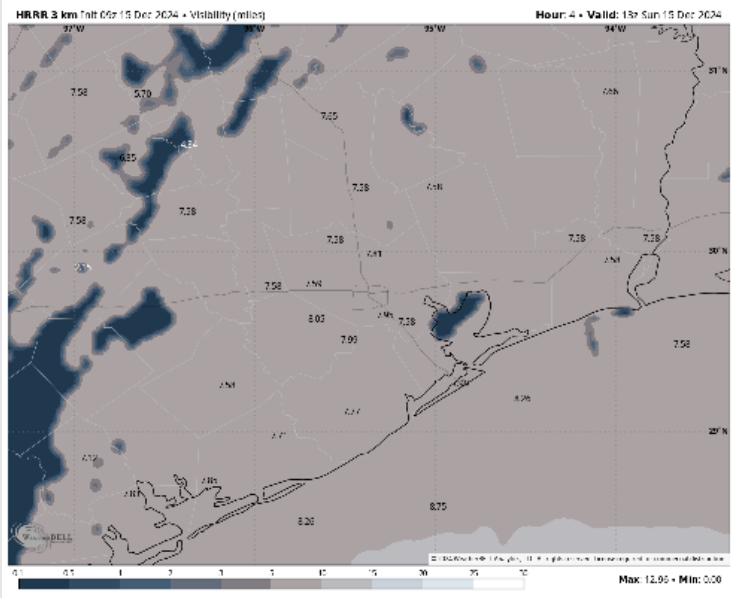
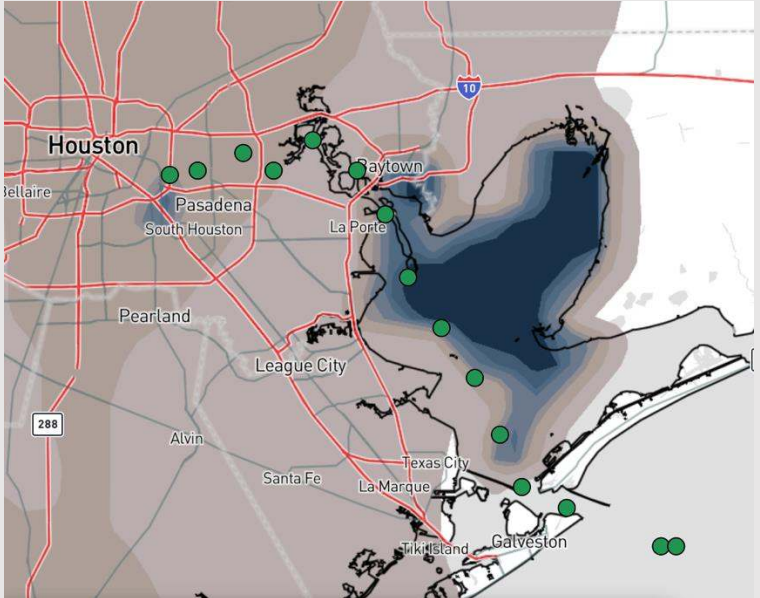
You can also access real-time forecast updates and 24/7 meteorological chat assistance on your [Clarity](#) app. Click [here](#) for login assistance.



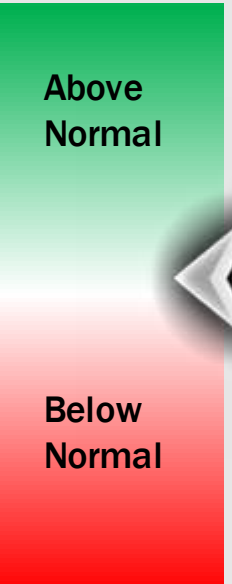
# Houston Pilots Visibility Report



## CURRENT VISIBILITY 12:30 AM CST      7 AM CST SUN VISIBILITY



## Confidence



TIMEFRAME DISCUSSED	THREAT
Current to 12 AM MON	Medium-High

- The greatest sea fog potential will be through 12 PM SUN, with pockets of <0.5-mile visibility S of Morgan's Point. Visibility of <2.0 miles will be possible for stations N of Morgan's Point.
- After 12 PM SUN, conditions will remain semi-favorable for patchy Sea Fog throughout the rest of the day and into early morning MON for stations S of Morgan's Point. Risk will be for pockets of < 2.0-mile visibility.

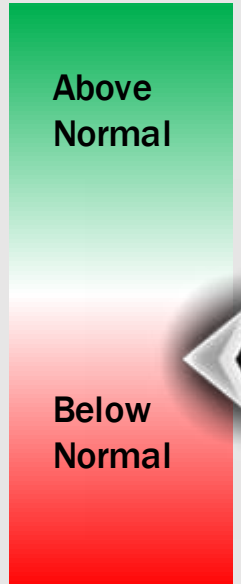
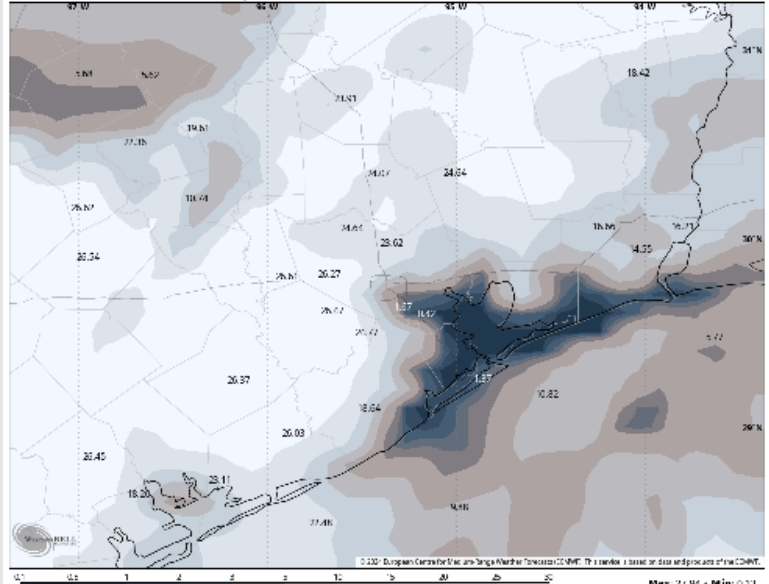
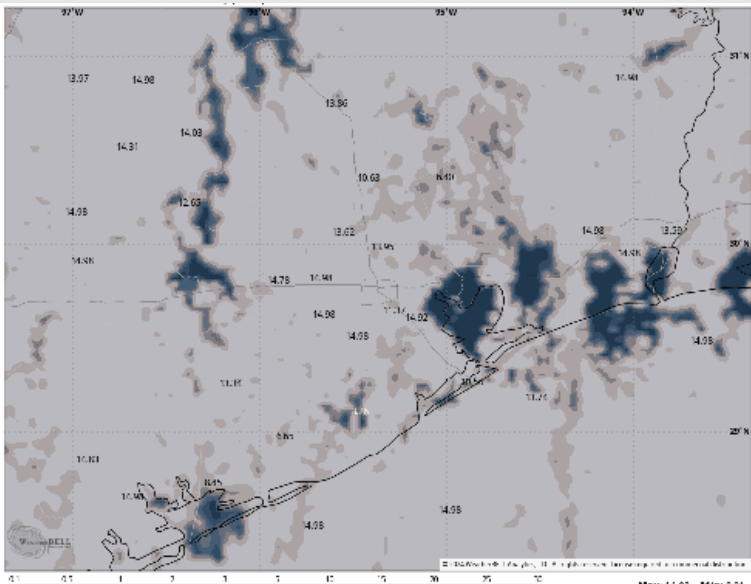
# Houston Pilots Visibility Report



## 7 AM CST MON VISIBILITY

## 4 PM CST MON VISIBILITY

## Confidence



TIMEFRAME DISCUSSED	THREAT
12 AM MON - 12 AM TUE	Med-High

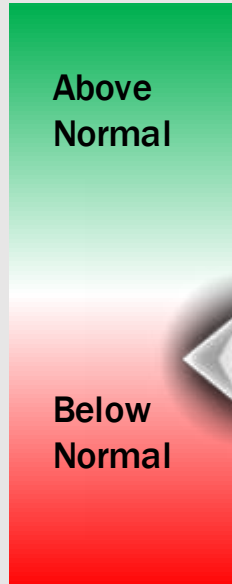
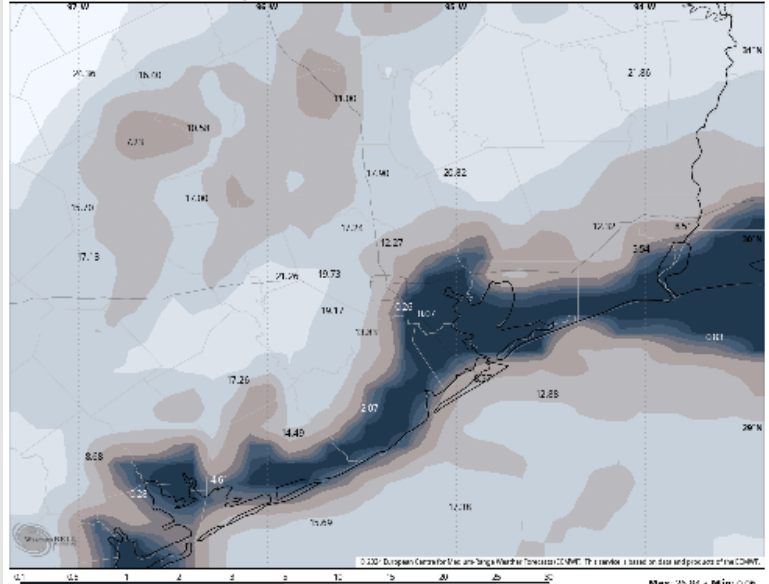
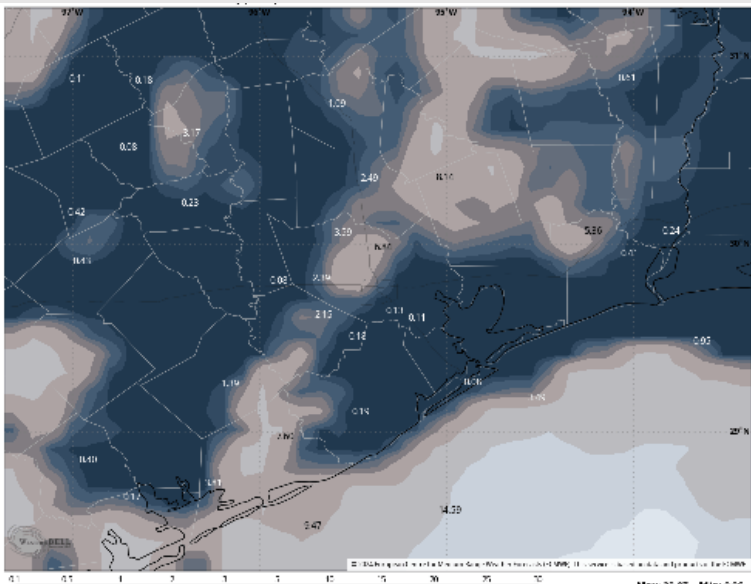
- Patchy Sea Fog risks continue for Stations S of Morgan's Point through 9 AM CST, with brief patchy risks N of Morgan's Point between 5 - 9 AM.
- Pockets with <0.5-mile visibility will be in play S of Morgan's Point, while visibility of <2.0 miles will be possible for Stations N of Morgan's Point.
- After 9 AM, sea fog risks recede to the Boarding Station, where visibilities of <0.5 miles will continue throughout the day. Patchy risks then expand to all Stations S of Morgan's Point after 5 PM.

# Houston Pilots Visibility Report



## 7 AM CST TUE VISIBILITY      6 PM CST TUE VISIBILITY

## Confidence



TIMEFRAME DISCUSSED	THREAT
12 AM TUE to 12 AM WED	High

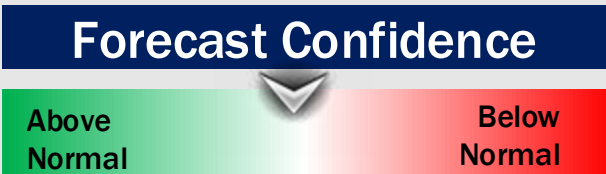
- Patchy Sea Fog risks for Stations S of Morgan's Point, will gradually expand further into TUE AM, becoming widespread for all Stations by 4 AM. Visibilities of <0.5 miles will be in play for all Stations through 11 AM.
- From 11 AM to 5 PM, visibilities clear up for Stations N of Morgan's Point but remain at 1-3 miles for Stations S.
- Widespread sea fog will then gradually work in once again for all Stations after 5 PM and into WED AM, reducing visibilities to <0.5 miles.

# Houston Pilots Extended Range Visibility Report



## Wednesday 12/18/24

Prior to the arrival of storms WED AM, widespread sea fog will be possible. Due to the passing cold front fog risks are not favored WED PM.



## Friday 12/20/24

Monitoring a low-end risk for patchy fog/mist FRI AM.



## Thursday 12/19/24

Fog is not favored for Thursday



Chance for Fog	
Wednesday AM	Med-High
Wednesday PM	Unlikely
Thursday AM	Unlikely
Thursday PM	Unlikely
Friday AM	Low-End
Friday PM	Unlikely

# Houston Pilots Visibility Chart (miles)



## Forecast Confidence



Visibility	Sun 5 am	Sun 6 am	Sun 7 am	Sun 8 am	Sun 9 am	Sun 10 am	Sun 11 am	Sun 12 pm	Sun 1 pm	Sun 2 pm	Sun 3 pm	Sun 4 pm	Sun 5 pm	Sun 6 pm	Sun 7 pm	Sun 8 pm	Sun 9 pm	Sun 10 pm	Sun 11 pm	Mon 12 am	Mon 1 am	Mon 2 am	Mon 3 am	Mon 4 am
Houston Pilots N - 610 Bridge	3.9	3.9	3.9	3.9	3.9	5.9	9	10	10	10	10	10	10	10	10	10	10	10	10	10	7.9	6.9	7.9	6.9
Houston Pilots M - Kinder 1	3.9	3.9	3.9	3.9	3.9	5.9	9	10	10	10	10	10	10	10	10	10	10	10	10	9	7.9	6.9	7.9	6.9
Houston Pilots L - Greens Bayou	3.9	3.9	3.9	3.9	3.9	5.9	9	10	10	10	10	10	10	10	10	10	10	10	9	9	6.9	6.9	6.9	6.9
Houston Pilots K - Shell Crude	3.9	3.9	3.9	3.9	3.9	5.9	9	10	10	10	10	10	10	10	10	10	10	10	9	7.9	6.9	6.9	6.9	6.9
Houston Pilots J - Lynchburg Ferries	3.9	2.9	2.9	3.9	3.9	5.9	9	10	10	10	10	10	10	10	10	10	10	10	9	9	6.9	6.9	6.9	6.9
Houston Pilots I - Exxon 3	2.9	2.5	0.5	1.1	2.9	5.9	9	10	10	10	10	10	10	10	10	10	10	10	9	7.9	6.9	6.9	6.9	6.9
Houston Pilots H - Morgans Point	0.8	0.5	0.5	0.5	2.5	5.9	7.9	10	10	10	10	10	10	10	10	10	10	9	7.9	6.9	6.9	6.9	6.9	6.9
Houston Pilots G - 75/76	0.8	0.5	0.5	0.5	2.5	6.9	3.9	10	10	10	10	10	10	10	10	10	10	6.9	6.9	6.9	6.9	6.9	6.9	0.2
Houston Pilots F - 63/64	2	2.9	2.9	0.5	2.5	6.9	3.9	10	10	10	10	10	10	10	10	10	10	7.9	6.9	6.9	6.9	6.9	6.9	0.2
Houston Pilots E - 51/52	4.9	3.9	2.9	2.9	3.9	6.9	10	10	10	10	10	10	10	10	10	10	10	7.9	6.9	6.9	6.9	6.9	6.9	0.2
Houston Pilots D - 37/38	5.9	3.9	4.9	3.9	3.9	6.9	10	10	10	10	10	10	10	10	10	10	10	7.9	6.9	6.9	6.9	6.9	6.9	0.2
Houston Pilots C - 25/26	5.9	3.9	4.9	4.9	3.9	6.9	10	10	10	10	10	10	10	10	10	10	10	7.9	6.9	6.9	6.9	6.9	6.9	0.2
Houston Pilots B - 11/12	6.9	6.9	5.9	5.9	6.9	7.9	10	10	10	10	10	10	10	10	10	10	10	7.9	6.9	6.9	6.9	6.9	6.9	0
Houston Pilots A - 1 & 2 Bravo	10	10	10	9	7.9	10	10	10	10	10	10	10	9	9	10	10	10	9	6.9	6.9	6.9	6.9	6.9	0

**NOTE: This is automated data that may/may not agree with the official BAM thinking that's found on the daily slides or special visibility report slides. This data should be used as a guide only**

# Houston Pilots Wind Chart



## Forecast Confidence



Sustained wind 10 Knots  
 Gusts 15 Knots  
 Wind from the SE

**Example**

10  
 15  
 ↖

Wind	Sun 5 am	Sun 6 am	Sun 7 am	Sun 8 am	Sun 9 am	Sun 10 am	Sun 11 am	Sun 12 pm	Sun 1 pm	Sun 2 pm	Sun 3 pm	Sun 4 pm	Sun 5 pm	Sun 6 pm	Sun 7 pm	Sun 8 pm	Sun 9 pm	Sun 10 pm	Sun 11 pm	Mon 12 am	Mon 1 am	Mon 2 am	Mon 3 am	Mon 4 am	
Houston Pilots N - 610 Bridge	3 ↖	3 ↖	3 ↖	5 ↖	6 ↖	6 ↖	8 ↖	8 ↖	9 ↖	9 ↖	10 ↖	10 ↖	10 ↖	9 ↖	8 ↖	8 ↖	8 ↖	8 ↖	7 ↖	7 ↖	7 ↖	6 ↖	6 ↖	6 ↖	
Houston Pilots M - Kinder 1	3 ↖	3 ↖	3 ↖	5 ↖	6 ↖	6 ↖	8 ↖	8 ↖	9 ↖	10 ↖	10 ↖	10 ↖	10 ↖	9 ↖	8 ↖	8 ↖	8 ↖	8 ↖	8 ↖	7 ↖	7 ↖	6 ↖	6 ↖	6 ↖	
Houston Pilots L - Greens Bayou	3 ↖	3 ↖	3 ↖	5 ↖	6 ↖	6 ↖	8 ↖	8 ↖	9 ↖	10 ↖	10 ↖	10 ↖	10 ↖	9 ↖	8 ↖	8 ↖	8 ↖	8 ↖	7 ↖	7 ↖	7 ↖	6 ↖	6 ↖	6 ↖	
Houston Pilots K - Shell Crude	3 ↖	3 ↖	3 ↖	5 ↖	6 ↖	6 ↖	8 ↖	8 ↖	9 ↖	10 ↖	10 ↖	10 ↖	10 ↖	9 ↖	8 ↖	8 ↖	8 ↖	8 ↖	7 ↖	7 ↖	7 ↖	6 ↖	6 ↖	6 ↖	
Houston Pilots J - Lynchburg Ferries	3 ↖	3 ↖	3 ↖	5 ↖	6 ↖	6 ↖	8 ↖	8 ↖	9 ↖	10 ↖	10 ↖	10 ↖	10 ↖	9 ↖	8 ↖	8 ↖	8 ↖	7 ↖	7 ↖	7 ↖	6 ↖	6 ↖	6 ↖	6 ↖	
Houston Pilots I - Exxon 3	6 ↖	6 ↖	6 ↖	7 ↖	8 ↖	8 ↖	9 ↖	10 ↖	10 ↖	12 ↖	12 ↖	13 ↖	13 ↖	13 ↖	12 ↖	12 ↖	12 ↖	12 ↖	12 ↖	12 ↖	10 ↖	10 ↖	10 ↖	10 ↖	9 ↖
Houston Pilots H - Morgans Point	6 ↖	6 ↖	6 ↖	7 ↖	7 ↖	8 ↖	8 ↖	10 ↖	10 ↖	10 ↖	12 ↖	12 ↖	12 ↖	12 ↖	12 ↖	10 ↖	10 ↖	10 ↖	10 ↖	10 ↖	10 ↖	10 ↖	10 ↖	9 ↖	9 ↖
Houston Pilots G - 75/76	8 ↖	8 ↖	8 ↖	8 ↖	8 ↖	9 ↖	9 ↖	10 ↖	10 ↖	10 ↖	12 ↖	12 ↖	13 ↖	13 ↖	12 ↖	12 ↖	12 ↖	12 ↖	12 ↖	12 ↖	12 ↖	12 ↖	10 ↖	10 ↖	10 ↖
Houston Pilots F - 63/64	7 ↖	7 ↖	8 ↖	8 ↖	8 ↖	8 ↖	9 ↖	9 ↖	10 ↖	10 ↖	10 ↖	10 ↖	12 ↖	12 ↖	12 ↖	12 ↖	12 ↖	12 ↖	12 ↖	12 ↖	12 ↖	12 ↖	10 ↖	10 ↖	10 ↖
Houston Pilots E - 51/52	7 ↖	7 ↖	7 ↖	8 ↖	8 ↖	8 ↖	9 ↖	9 ↖	10 ↖	10 ↖	10 ↖	10 ↖	10 ↖	10 ↖	10 ↖	10 ↖	10 ↖	10 ↖	10 ↖	10 ↖	10 ↖	10 ↖	10 ↖	10 ↖	9 ↖
Houston Pilots D - 37/38	7 ↖	7 ↖	7 ↖	8 ↖	8 ↖	8 ↖	9 ↖	9 ↖	10 ↖	10 ↖	10 ↖	10 ↖	10 ↖	10 ↖	10 ↖	10 ↖	10 ↖	10 ↖	10 ↖	10 ↖	10 ↖	10 ↖	10 ↖	10 ↖	9 ↖
Houston Pilots C - 25/26	6 ↖	7 ↖	7 ↖	7 ↖	8 ↖	8 ↖	9 ↖	9 ↖	10 ↖	10 ↖	10 ↖	10 ↖	10 ↖	10 ↖	10 ↖	10 ↖	10 ↖	10 ↖	10 ↖	10 ↖	10 ↖	10 ↖	9 ↖	9 ↖	9 ↖
Houston Pilots B - 11/12	6 ↖	6 ↖	6 ↖	7 ↖	8 ↖	8 ↖	8 ↖	9 ↖	10 ↖	10 ↖	9 ↖	9 ↖	9 ↖	9 ↖	9 ↖	9 ↖	9 ↖	9 ↖	9 ↖	9 ↖	9 ↖	8 ↖	8 ↖	8 ↖	8 ↖
Houston Pilots A - 1 & 2 Bravo	8 ↖	8 ↖	8 ↖	8 ↖	8 ↖	9 ↖	9 ↖	10 ↖	10 ↖	9 ↖	9 ↖	9 ↖	10 ↖	10 ↖	10 ↖	10 ↖	10 ↖	12 ↖	12 ↖	12 ↖	10 ↖	10 ↖	10 ↖	10 ↖	10 ↖

**NOTE: This is automated data that may/may not agree with the official BAM thinking that's found on the daily slides. This data should be used as a guide only.**

# Houston Pilots: SUN. 12/15/2024



## Forecast Discussion

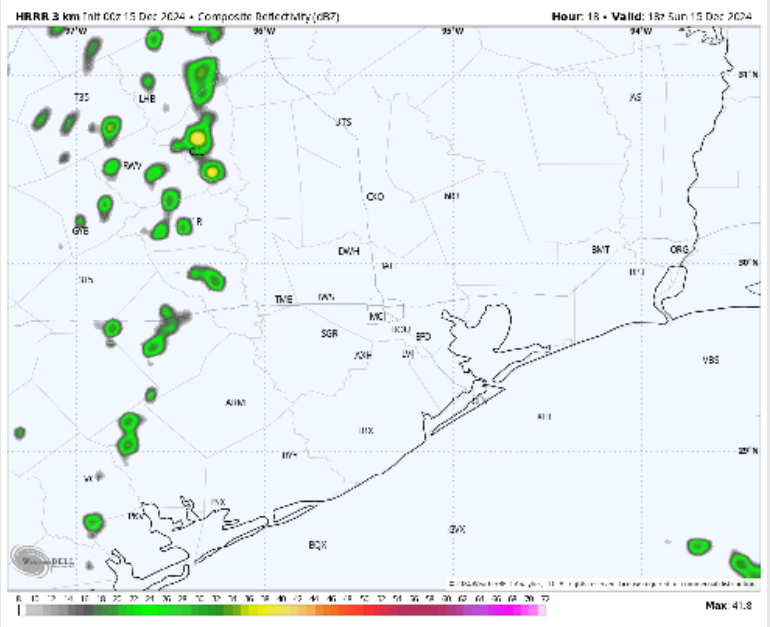
**Precip:** Isolated drizzle favored between 6 AM – 4 PM for all Stations.

**Wind:** Winds will be out of the SE throughout the day. **N of Morgan's Point:** Winds will be at 4 – 9 kts through the day. **S of Morgan's Point:** Winds will be at 4 – 10 kts through 10 AM, before increasing to 8 – 12 kts for the rest of the day.

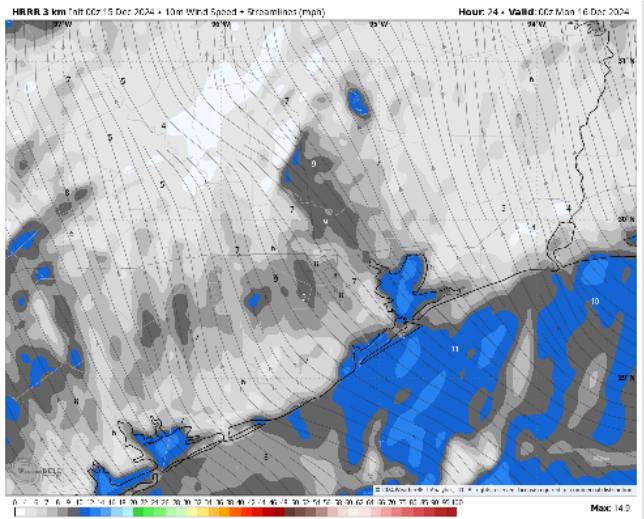
**High Temps:** **N of Morgan's Point:** Upper 70s F. **S of Morgan's Point:** Upper 60s F.

**Visibility:** Favoring Sea Fog risks this AM. Check the visibility slide for more info.

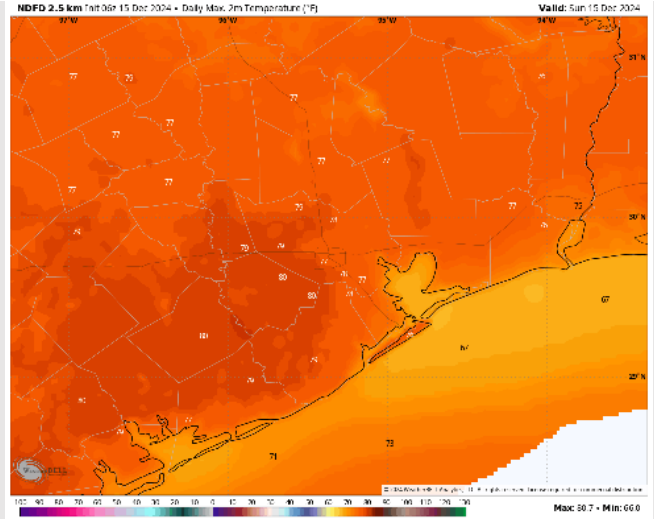
## Precip Image: 12 PM CT



Wind Speed  
6 PM CT



High Temps  
Today





# Houston Pilots: MON. 12/16/2024



## Forecast Discussion

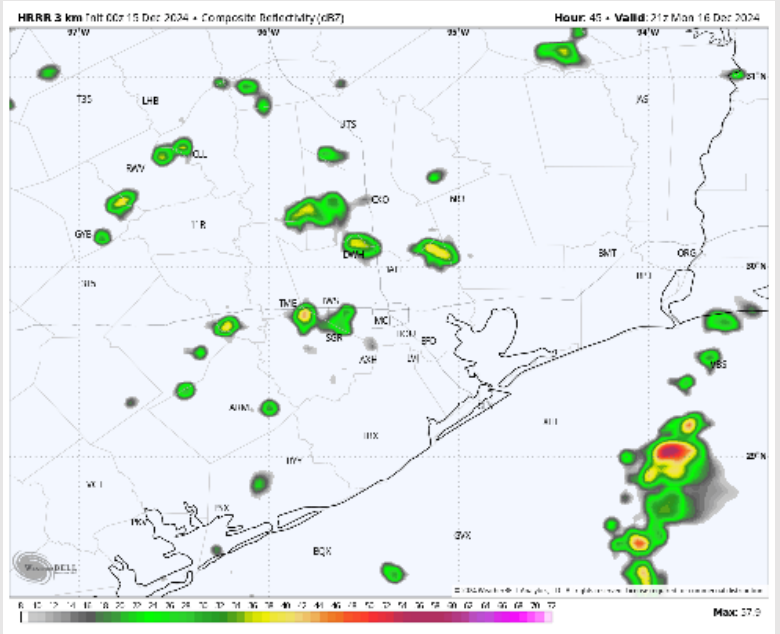
**Precip:** Isolated (20%) showers to be possible after 10 AM for stations N of Morgan's Point and will last through 6 PM

**Wind:** Winds will be out of the SE throughout Monday. **N of Morgan's Point:** Winds will be at 3 – 8 kts for the day on Monday. **S of Morgan's Point:** Winds will be at 6 – 12 kts throughout the day Monday.

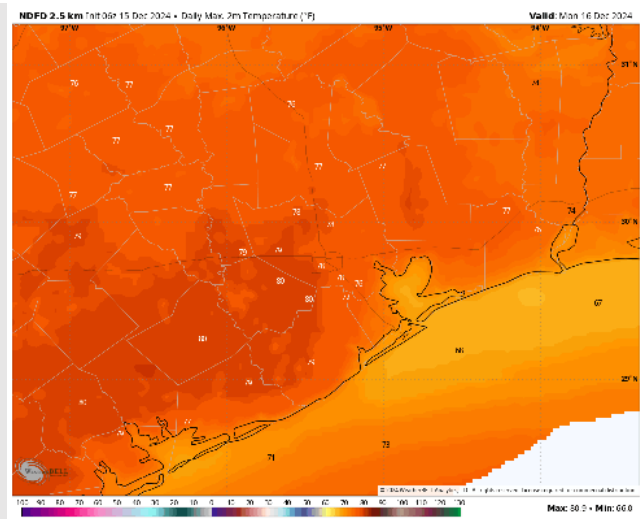
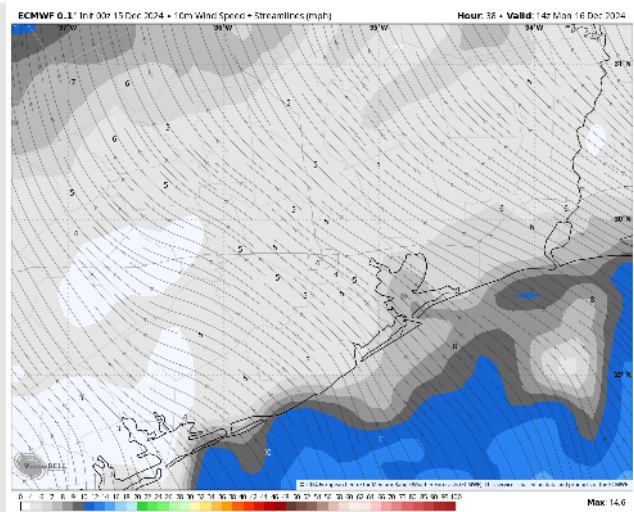
**High Temps:** **N of Morgan's Point:** Mid to Upper 70s F. **S of Morgan's Point:** Upper 60s F.

**Visibility:** Monitoring patchy Sea Fog risks for all Stations MON AM. Risks back off to the Boarding Station through the midday before returning to all Stations MON PM. Check the corresponding visibility slide for more information.

## Precip Image: 4 PM CT



Wind Speed:  
8 AM CT



High Temps  
Monday

# Houston Pilots: TUE. 12/17/2024



## Forecast Discussion

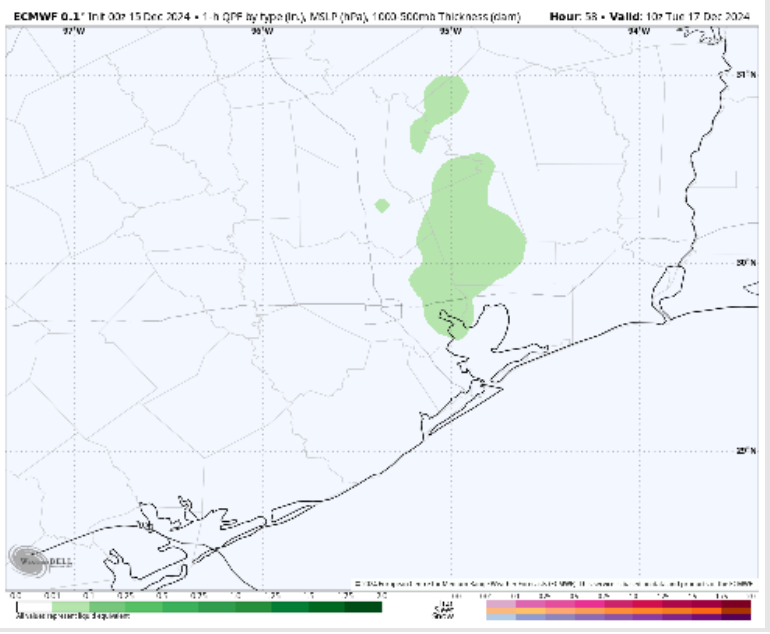
**Precip:** Hit/miss (30%) chances of light showers will be in play for Stations N of Morgan's Point between 4 AM and 4 PM.

**Wind:** Winds will be out of the SE throughout the day. **N of Morgan's Point:** Winds will be at 3 - 8 kts throughout Tuesday. **S of Morgan's Point:** Winds will be at 4 - 10 kts for Tuesday.

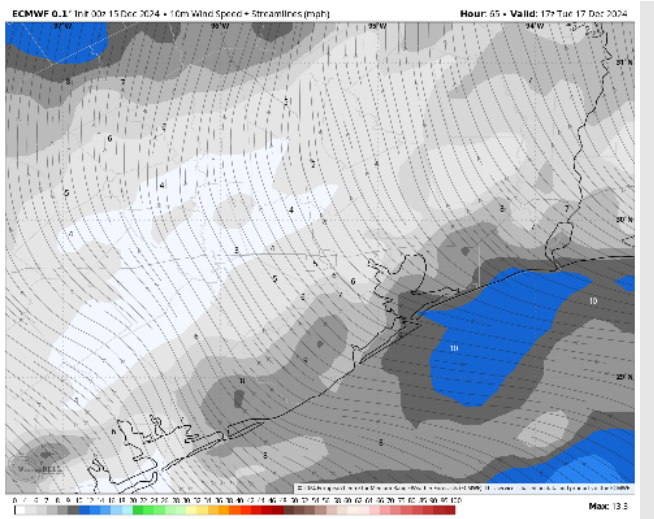
**High Temps:** **N of Morgan's Point:** Mid 70s F. **S of Morgan's Point:** Upper 60s F.

**Visibility:** Patchy to widespread sea fog will be possible for Tuesday AM. Pockets of fog will remain possible through the day in between rounds of rain showers, especially for Stations S of Morgan's Point. Check corresponding visibility slide for more information.

## Precip Image: 4 AM CT

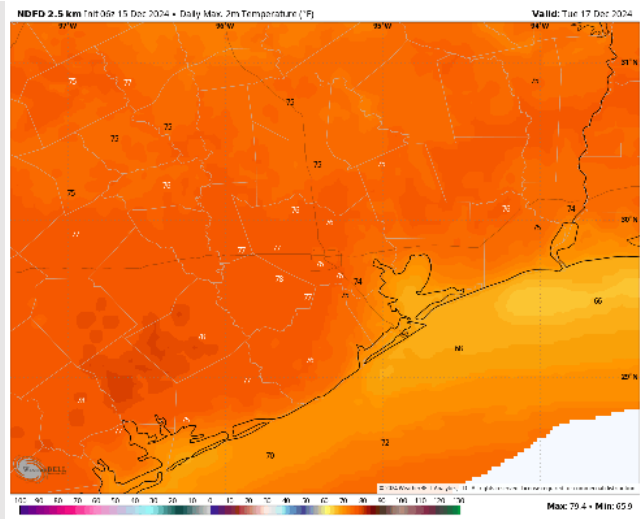


## Wind Speed: 11 AM CT



Wind Speed:  
11 AM CT

## High Temps Tuesday

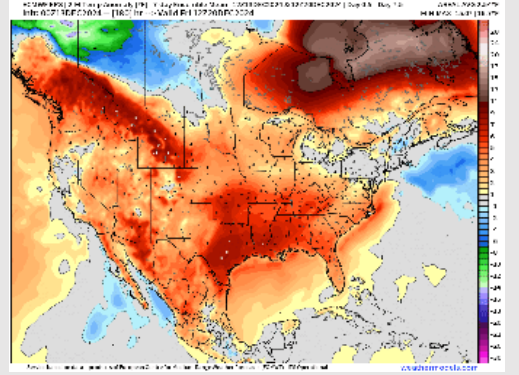


High Temps  
Tuesday

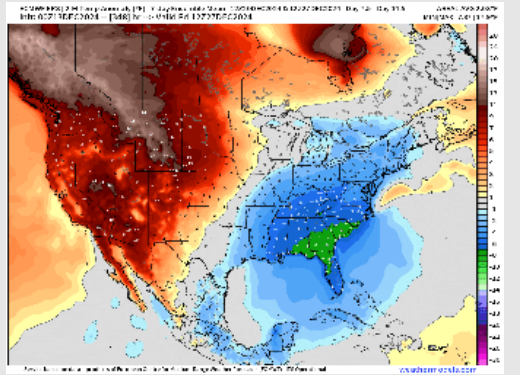
# Houston Pilots: 12/15/24



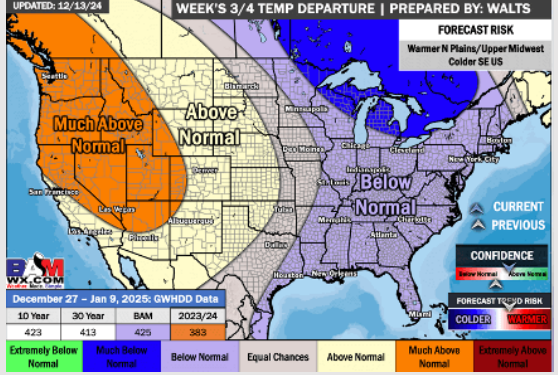
**Next 7 Day Temperature Departure**



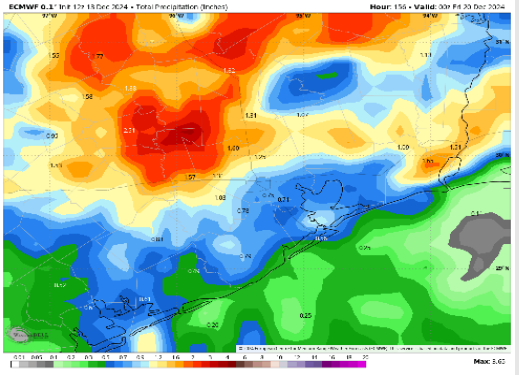
**8-14 Day Temperature Departure**



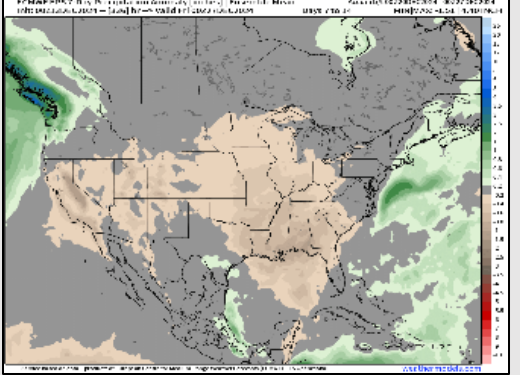
**15-30 Day Temperature Departure**



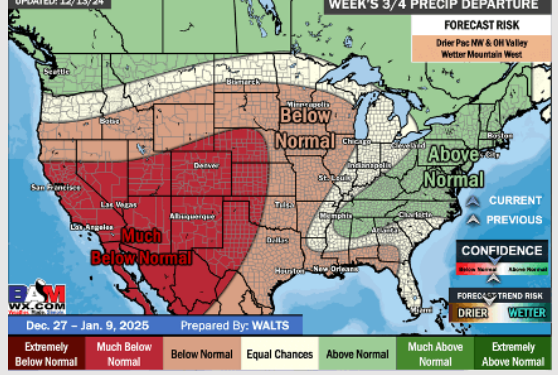
**Next 7 Day Total Precipitation**



**8-14 Day % of Average Precip.**



**15-30 Day % of Average Precip.**



- Temps are expected to be above normal for the week 1 timeframe. Rain chances will continue for the start of the weekend.
- Below-normal temperatures are favored for week 2. Favoring near normal rainfall week 2.
- Near normal temperatures and below-normal precipitation chances are expected for the weeks 3/4 timeframe.