

# Houston Pilots Forecast Package



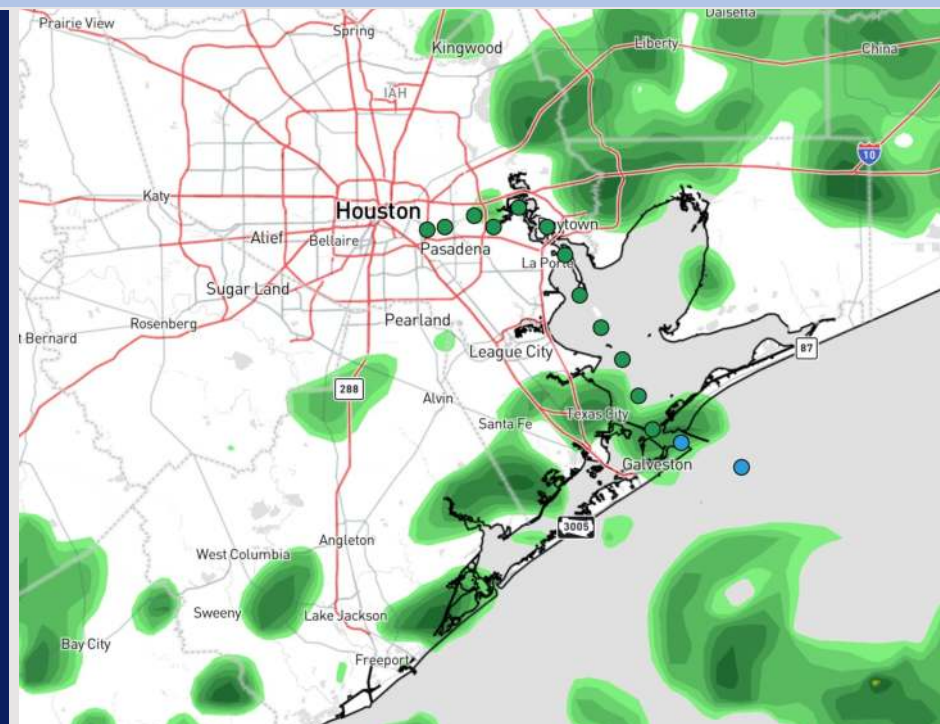
Updated: 12:45 PM CT

Friday, December 13, 2024

Forecaster: Adam Feick

## Weather Headlines

- Elevated winds of 20+ kts will continue into SAT AM before decreasing.
- Scattered showers and storms will be possible throughout Saturday.
- **Widespread Sea Fog will be possible into the weekend and to start the new week. Check Visibility slides for both SAT and SUN**



**Current Radar: 12:30 PM CT**

As always, please do not hesitate to reach out to us with any forecast questions at **(317)-560-8122**. Press 1 for forecast questions.

You can also access real-time forecast updates and 24/7 meteorological chat assistance on your [Clarity](#) app. Click [here](#) for login assistance.

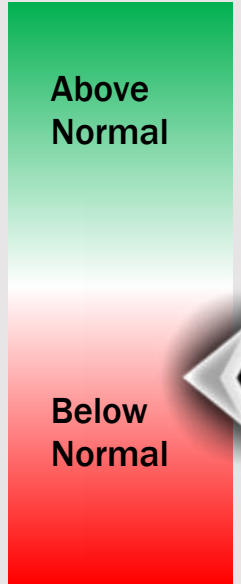
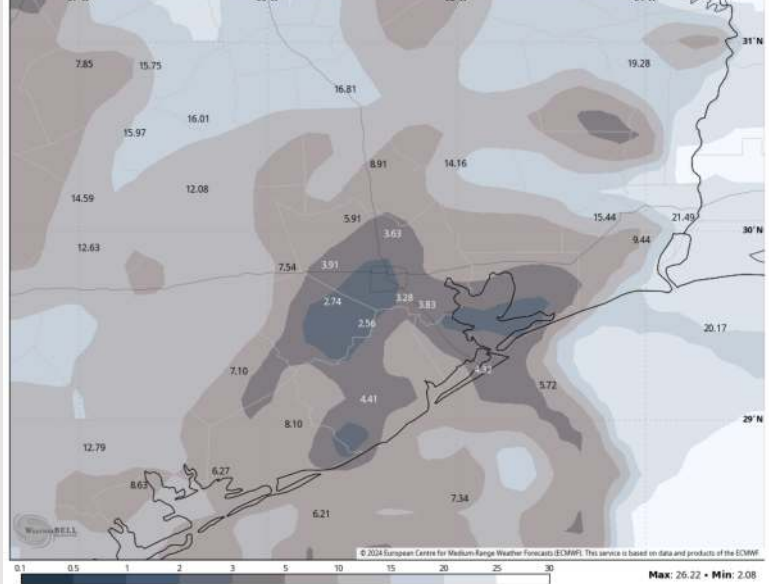
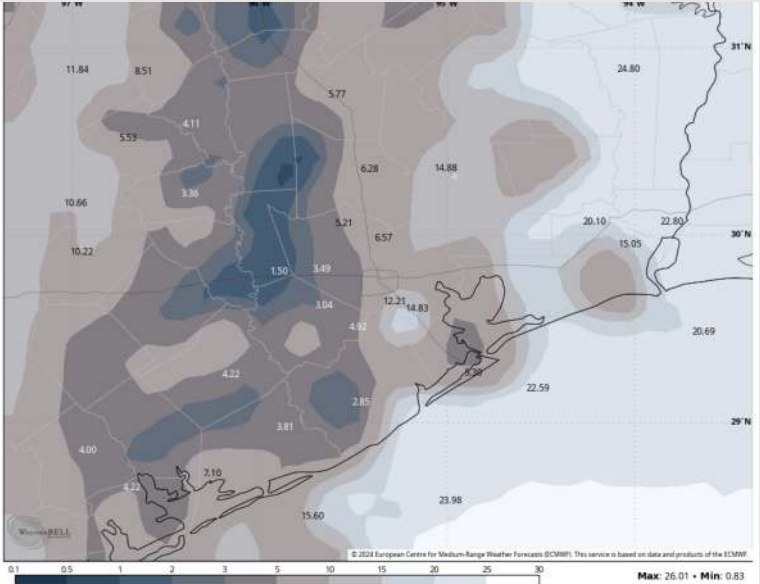
# Houston Pilots Visibility Report



## 9 PM CST FRI VISIBILITY

## 5 AM CST SAT VISIBILITY

## Confidence



TIMEFRAME DISCUSSED	THREAT
Current to 12 PM SAT	Medium

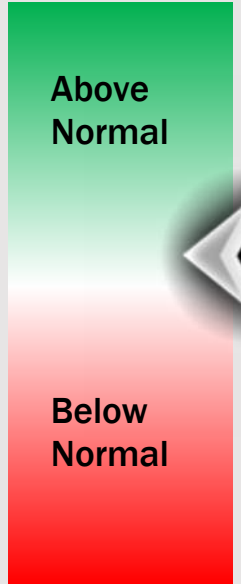
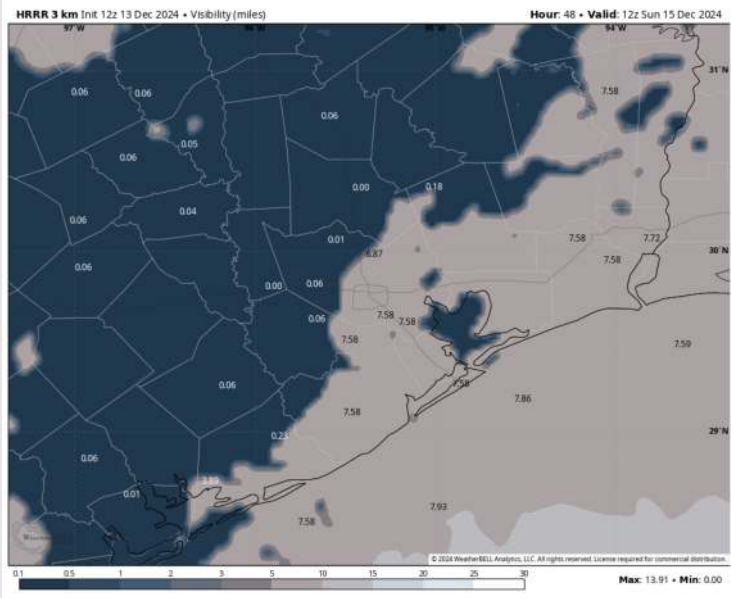
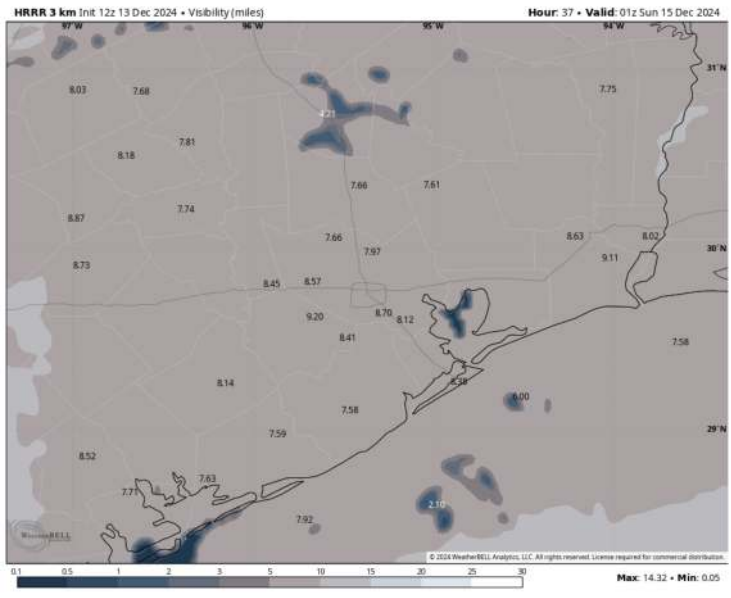
- Recent observations have begun to indicate conditions for Sea Fog to begin to mix in with showers starting as early as 9 PM CT, with the threat slowly increasing into SAT AM.
- The greatest timeframe of risk will be between 2 AM and 8 AM SAT, with pockets of <1.0-mile visibility S of Morgan's Point. Stations N of Morgan's Point will be at risk for 2 - 4-mile visibility
- While after 8 AM SAT we do favor the Sea Fog to begin to dissipate/retract from the bay. Lingering pockets can be possible through 12 PM.
- Data will struggle to see this threat by underdoing potential. This includes the images shown above.

# Houston Pilots Visibility Report



## 7 PM CST SAT VISIBILITY      7 AM CST SUN VISIBILITY

## Confidence



TIMEFRAME DISCUSSED	THREAT
9 PM SAT to 12 PM SUN	Medium-High

- Sea Fog risks are favored to begin to work in starting at 7 PM SAT for all stations and continuing throughout the rest of the evening and into the morning on SUN.
- The greatest timeframe of risk will be between 2 AM and 8 AM SUN, with pockets of <0.5-mile visibility S of Morgan's Point. Visibility of <2.0 miles will be possible for stations N of Morgan's Point.
- While after 8 AM SUN we do favor the Sea Fog to begin to dissipate/retract from the bay. Lingering pockets can be possible through 12 PM.
- Data will struggle to see this threat by underdoing potential. This includes the images shown above.

# Houston Pilots Extended Range Visibility Report



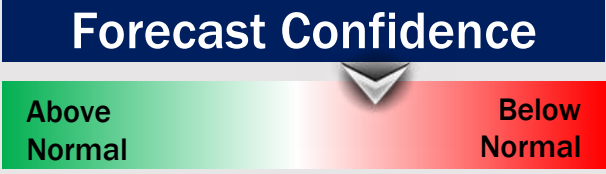
## Monday 12/16/24

Patchy to widespread sea fog will be possible for Monday AM. Confidence is increasing on this threat lingering into the PM.



## Tuesday 12/17/24

Patchy to widespread sea fog will be possible for Tuesday AM. Delayed timing of storms TUE PM have increase sea fog potential late TUE before storm arrival



## Wednesday 12/18/24

Prior to the arrival of storms early WED AM. Patchy sea fog will be possible. Confidence remains low. Due to the passing cold front fog risks are not favored WED PM.



## Chance for Fog

Monday AM	Med-High
Monday PM	Medium
Tuesday AM	Med-High
Tuesday PM	Medium
Wednesday AM	Medium
Wednesday PM	Unlikely

# Houston Pilots Visibility Chart (miles)



## Forecast Confidence



Visibility	Fri 2 pm	Fri 3 pm	Fri 4 pm	Fri 5 pm	Fri 6 pm	Fri 7 pm	Fri 8 pm	Fri 9 pm	Fri 10 pm	Fri 11 pm	Sat 12 am	Sat 1 am	Sat 2 am	Sat 3 am	Sat 4 am	Sat 5 am	Sat 6 am	Sat 7 am	Sat 8 am	Sat 9 am	Sat 10 am	Sat 11 am	Sat 12 pm	Sat 1 pm
Houston Pilots N - 610 Bridge	10	9	6.9	6.9	5.9	5.9	6.9	6.9	6.9	6.9	7.9	7.9	9	10	10	10	10	10	10	6.9	7.9	10	10	10
Houston Pilots M - Kinder 1	10	9	6.9	6.9	6.9	5.9	6.9	6.9	6.9	6.9	7.9	7.9	9	10	10	10	10	10	10	6.9	7.9	10	10	10
Houston Pilots L - Greens Bayou	10	7.9	6.9	6.9	6.9	5.9	6.9	6.9	6.9	6.9	7.9	7.9	9	10	10	10	10	10	10	6.9	7.9	10	10	10
Houston Pilots K - Shell Crude	10	7.9	6.9	6.9	6.9	5.9	6.9	6.9	6.9	6.9	7.9	7.9	9	10	10	10	10	10	10	6.9	7.9	10	10	10
Houston Pilots J - Lynchburg Ferries	10	9	6.9	6.9	6.9	6.9	6.9	6.9	6.9	6.9	7.9	7.9	10	10	10	10	10	10	10	6.9	7.9	10	10	10
Houston Pilots I - Exxon 3	10	7.9	6.9	6.9	6.9	5.9	6.9	6.9	6.9	6.9	7.9	7.9	10	10	10	10	10	10	10	6.9	7.9	10	10	10
Houston Pilots H - Morgans Point	9	7.9	6.9	6.9	6.9	5.9	6.9	6.9	6.9	6.9	7.9	9	10	10	10	10	10	10	10	6.9	7.9	10	10	10
Houston Pilots G - 75/76	8	7.9	6.9	6.9	5.9	5.9	6.9	6.9	6.9	7.9	7.9	10	10	10	10	10	10	10	10	10	10	10	9	9
Houston Pilots F - 63/64	8	7.9	6.9	6.9	5.9	5.9	6.9	6.9	6.9	7.9	7.9	10	10	10	10	10	10	10	10	10	10	10	9	9
Houston Pilots E - 51/52	8	7.9	6.9	6.9	5.9	5.9	6.9	6.9	6.9	7.9	7.9	10	10	10	10	10	10	10	10	10	10	10	9	9
Houston Pilots D - 37/38	8	9	6.9	6.9	5.9	6.9	6.9	6.9	6.9	7.9	7.9	10	10	10	10	10	10	10	10	10	10	10	9	9
Houston Pilots C - 25/26	8	9	6.9	6.9	5.9	6.9	6.9	6.9	7.9	6.9	10	10	10	10	10	10	10	10	10	9	10	10	8	8
Houston Pilots B - 11/12	8	9	6.9	6.9	5.9	6.9	6.9	6.9	7.9	6.9	10	10	10	10	10	10	10	10	10	10	10	10	8	8
Houston Pilots A - 1 & 2 Bravo	10	10	7.9	6.9	6.9	6.9	7.9	7.9	9	9	10	10	10	10	10	10	10	10	10	10	10	10	8	8

**NOTE: This is automated data that may/may not agree with the official BAM thinking that's found on the daily slides or special visibility report slides. This data should be used as a guide only**



# Houston Pilots Wind Chart



**Forecast Confidence**

Above Normal Below Normal

Sustained wind 10 Knots

Gusts 15 Knots

Wind from the SE

**Example**

10

15

↖

Wind	Fri 2 pm	Fri 3 pm	Fri 4 pm	Fri 5 pm	Fri 6 pm	Fri 7 pm	Fri 8 pm	Fri 9 pm	Fri 10 pm	Fri 11 pm	Sat 12 am	Sat 1 am	Sat 2 am	Sat 3 am	Sat 4 am	Sat 5 am	Sat 6 am	Sat 7 am	Sat 8 am	Sat 9 am	Sat 10 am	Sat 11 am	Sat 12 pm	Sat 1 pm
Houston Pilots N - 610 Bridge	13 26 ↖	13 26 ↖	13 25 ↖	13 25 ↖	13 24 ↖	12 23 ↖	12 24 ↖	12 24 ↖	13 23 ↖	13 23 ↖	12 23 ↖	10 22 ↖	10 21 ↖	10 20 ↖	9 18 ↖	8 17 ↖	8 16 ↖	7 16 ↖	7 15 ↖	7 15 ↖	7 16 ↖	8 16 ↖	8 16 ↖	8 16 ↖
Houston Pilots M - Kinder 1	13 26 ↖	13 26 ↖	13 25 ↖	13 25 ↖	13 24 ↖	12 23 ↖	12 24 ↖	13 24 ↖	13 23 ↖	13 23 ↖	12 23 ↖	10 22 ↖	10 22 ↖	10 21 ↖	9 18 ↖	8 17 ↖	8 17 ↖	8 16 ↖	7 15 ↖	7 15 ↖	7 15 ↖	8 16 ↖	8 16 ↖	8 16 ↖
Houston Pilots L - Greens Bayou	13 26 ↖	13 26 ↖	13 25 ↖	13 25 ↖	13 24 ↖	12 23 ↖	12 24 ↖	13 24 ↖	13 23 ↖	13 23 ↖	12 23 ↖	10 22 ↖	10 22 ↖	10 21 ↖	9 20 ↖	8 18 ↖	8 17 ↖	8 17 ↖	8 16 ↖	7 16 ↖	7 15 ↖	8 16 ↖	8 16 ↖	8 16 ↖
Houston Pilots K - Shell Crude	13 26 ↖	13 26 ↖	13 25 ↖	13 25 ↖	13 24 ↖	12 23 ↖	12 24 ↖	13 24 ↖	13 24 ↖	13 24 ↖	12 23 ↖	10 22 ↖	10 22 ↖	10 21 ↖	9 20 ↖	8 18 ↖	8 17 ↖	8 17 ↖	8 16 ↖	7 16 ↖	7 15 ↖	8 16 ↖	8 16 ↖	9 16 ↖
Houston Pilots J - Lynchburg Ferries	14 26 ↖	13 26 ↖	13 25 ↖	13 25 ↖	13 24 ↖	12 23 ↖	12 24 ↖	13 24 ↖	12 24 ↖	12 24 ↖	12 23 ↖	10 23 ↖	10 22 ↖	9 21 ↖	9 20 ↖	8 18 ↖	8 18 ↖	8 17 ↖	8 16 ↖	8 16 ↖	8 16 ↖	8 17 ↖	8 17 ↖	9 16 ↖
Houston Pilots I - Exxon 3	15 26 ↖	15 25 ↖	15 24 ↖	15 25 ↖	16 24 ↖	15 24 ↖	16 25 ↖	17 25 ↖	17 25 ↖	17 25 ↖	17 24 ↖	17 24 ↖	16 23 ↖	15 22 ↖	15 21 ↖	14 20 ↖	13 20 ↖	13 17 ↖	12 17 ↖	10 17 ↖	10 16 ↖	10 17 ↖	10 17 ↖	10 17 ↖
Houston Pilots H - Morgans Point	15 26 ↖	15 25 ↖	15 25 ↖	15 25 ↖	16 24 ↖	15 24 ↖	16 24 ↖	17 25 ↖	17 24 ↖	17 24 ↖	17 24 ↖	16 23 ↖	15 23 ↖	15 22 ↖	14 21 ↖	13 20 ↖	13 18 ↖	13 17 ↖	12 17 ↖	10 17 ↖	10 16 ↖	10 17 ↖	10 17 ↖	10 16 ↖
Houston Pilots G - 75/76	16 26 ↖	16 28 ↖	17 26 ↖	17 28 ↖	17 26 ↖	17 25 ↖	17 25 ↖	17 26 ↖	18 26 ↖	17 26 ↖	17 26 ↖	17 25 ↖	17 25 ↖	16 24 ↖	15 23 ↖	15 22 ↖	14 21 ↖	13 20 ↖	13 18 ↖	12 17 ↖	10 17 ↖	10 17 ↖	10 17 ↖	10 17 ↖
Houston Pilots F - 63/64	17 28 ↖	17 28 ↖	17 28 ↖	17 28 ↖	17 26 ↖	17 25 ↖	17 25 ↖	17 26 ↖	17 25 ↖	17 25 ↖	17 25 ↖	17 24 ↖	17 24 ↖	16 23 ↖	15 22 ↖	15 22 ↖	14 21 ↖	13 20 ↖	13 18 ↖	12 17 ↖	10 17 ↖	10 17 ↖	10 17 ↖	9 16 ↖
Houston Pilots E - 51/52	17 26 ↖	17 28 ↖	17 26 ↖	17 26 ↖	17 25 ↖	17 24 ↖	17 25 ↖	17 25 ↖	17 25 ↖	17 25 ↖	17 25 ↖	16 24 ↖	16 24 ↖	15 23 ↖	15 22 ↖	14 21 ↖	14 21 ↖	13 20 ↖	13 18 ↖	12 17 ↖	10 17 ↖	10 17 ↖	10 16 ↖	9 16 ↖
Houston Pilots D - 37/38	17 26 ↖	17 28 ↖	16 26 ↖	16 26 ↖	16 25 ↖	16 24 ↖	16 25 ↖	17 25 ↖	17 25 ↖	16 24 ↖	16 24 ↖	15 23 ↖	15 23 ↖	15 22 ↖	14 21 ↖	14 21 ↖	13 20 ↖	13 18 ↖	12 17 ↖	10 17 ↖	10 17 ↖	10 17 ↖	10 16 ↖	9 16 ↖
Houston Pilots C - 25/26	17 26 ↖	17 26 ↖	16 26 ↖	16 25 ↖	16 24 ↖	15 24 ↖	15 24 ↖	16 25 ↖	16 24 ↖	15 24 ↖	15 24 ↖	15 23 ↖	14 22 ↖	14 22 ↖	13 21 ↖	13 21 ↖	13 20 ↖	13 18 ↖	12 17 ↖	10 17 ↖	10 17 ↖	10 17 ↖	10 16 ↖	9 16 ↖
Houston Pilots B - 11/12	16 26 ↖	16 25 ↖	15 24 ↖	15 24 ↖	15 24 ↖	15 23 ↖	15 24 ↖	15 24 ↖	15 24 ↖	15 24 ↖	14 23 ↖	14 23 ↖	13 22 ↖	13 22 ↖	13 21 ↖	12 20 ↖	12 20 ↖	10 18 ↖	10 17 ↖	10 17 ↖	10 16 ↖	10 16 ↖	10 16 ↖	9 15 ↖
Houston Pilots A - 1 & 2 Bravo	17 28 ↖	17 28 ↖	17 26 ↖	17 26 ↖	17 25 ↖	16 24 ↖	16 25 ↖	17 25 ↖	17 25 ↖	17 25 ↖	16 25 ↖	16 24 ↖	15 24 ↖	15 23 ↖	15 22 ↖	14 21 ↖	14 21 ↖	13 20 ↖	13 18 ↖	13 17 ↖	12 17 ↖	12 17 ↖	10 16 ↖	10 16 ↖

**NOTE:** This is automated data that may/may not agree with the official BAM thinking that's found on the daily slides. This data should be used as a guide only.

# Houston Pilots: FRI. 12/13/2024



## Forecast Discussion

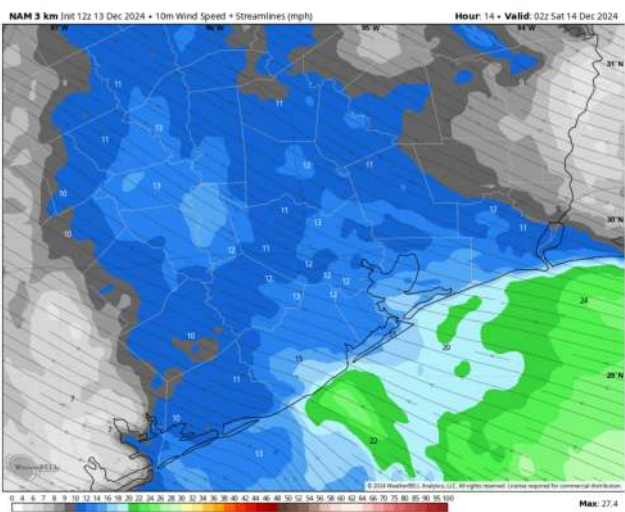
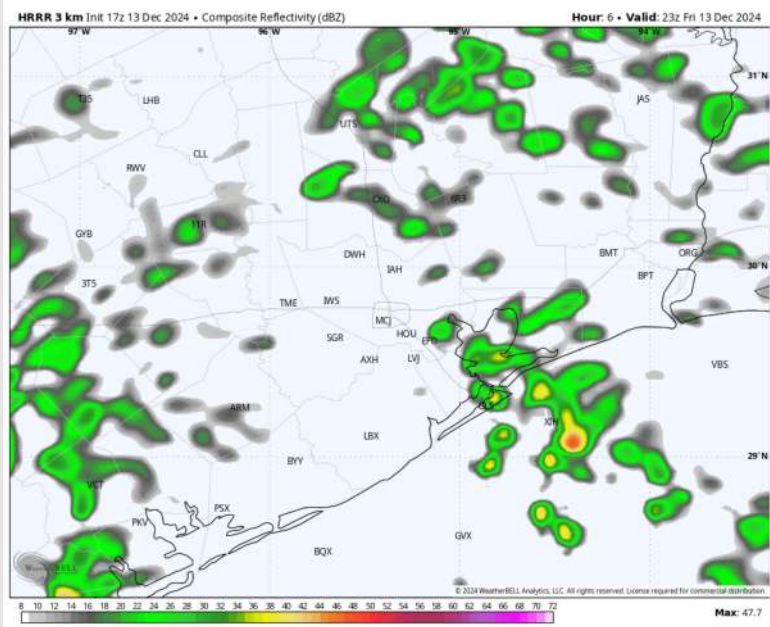
**Precip:** Isolated (20% - 30%) showers to be possible through the rest of the day.

**Wind:** Winds will be out of the ESE for the rest of the day. **N of Morgan's Point:** Winds will be at 8 – 12 kts for the rest of the day. **S of Morgan's Point:** Winds will be at 13 – 17 kts throughout the rest of the day. **Wind gusts of 25 – 30 kts will be possible for all Stations through the rest of the day.**

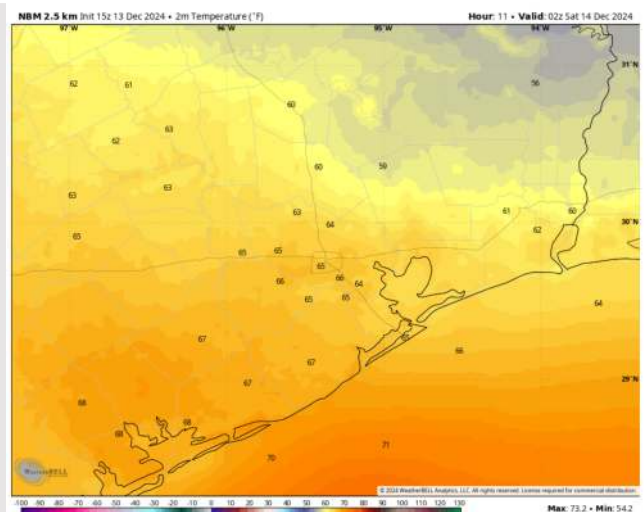
**Low Temps:** **N of Morgan's Point:** Mid to upper 60s F. **S of Morgan's Point:** Mid 60s F.

**Visibility:** Watching this evening (after ~ 7PM) for a low-end risk for slightly reduced visibility due to drizzle conditions. Fog is not favored until early SAT AM.

## Precip Image: 5 PM CT



Wind Speed:  
8 PM CT



Low Temps  
SAT AM



# Houston Pilots: SAT. 12/14/2024



## Forecast Discussion

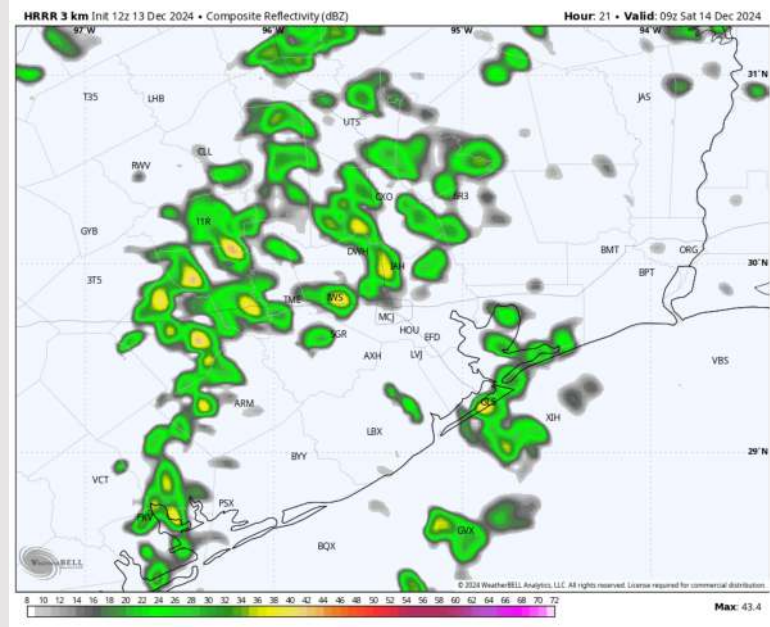
**Precip:** Scattered showers (40-50%) and storms will be favored 12 AM – 3 PM.

**Wind:** Winds will be out of the SE throughout the day on Saturday.  
**N of Morgan's Point:** Winds will be at 4 - 9 kts throughout the day on Saturday.  
**S of Morgan's Point:** Winds will be at 9 -14 kts through 12PM before decreasing to 5 – 10 kts for the rest of the day.

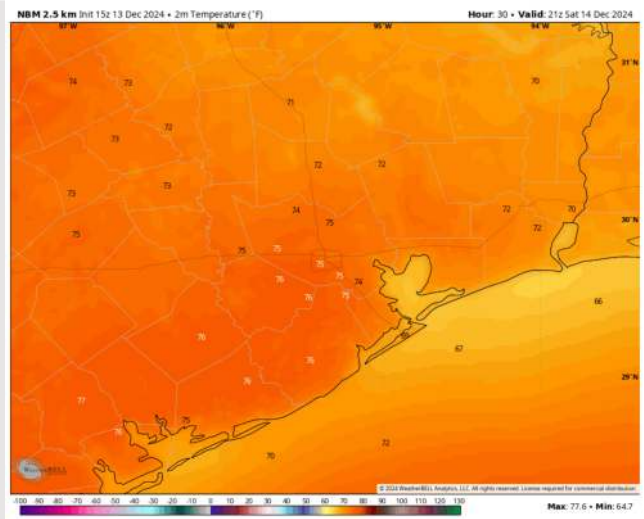
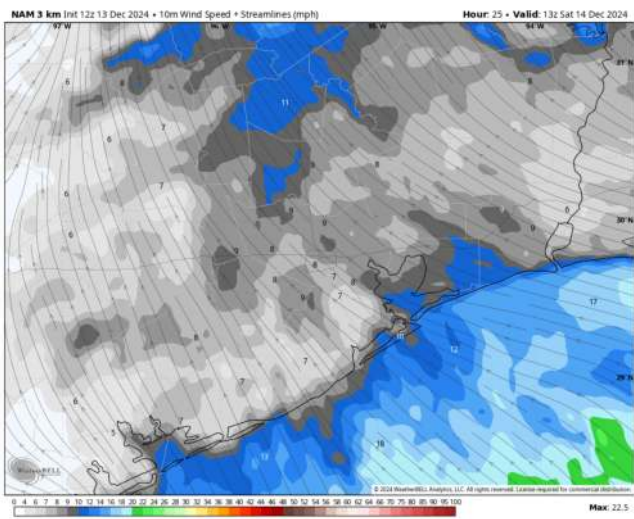
**High Temps:** **N of Morgan's Point:** Mid-70s F. **S of Morgan's Point:** Upper 60s F.

**Visibility:** Sea Fog risks will be possible both SAT AM and SAT PM. Check the corresponding visibility slide for each timeframe.

## Precip Image: 3 AM CT



Wind Speed:  
7 AM CT



High Temps  
Saturday



# Houston Pilots: SUN. 12/15/2024



## Forecast Discussion

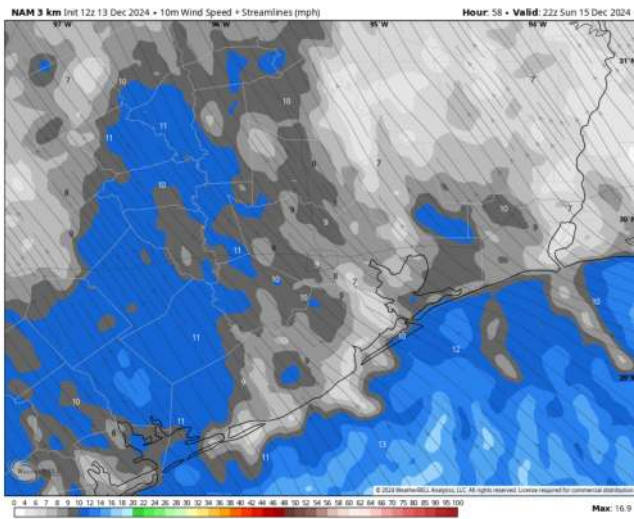
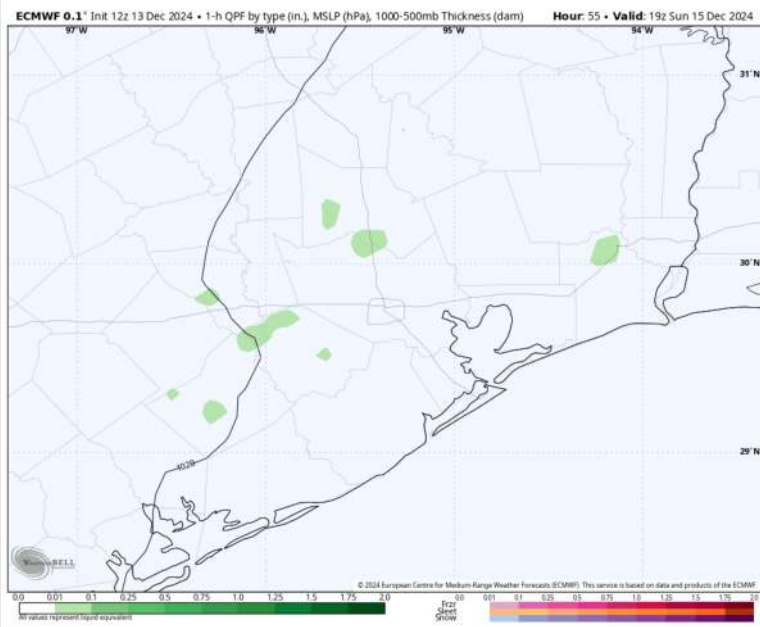
**Precip:** Outside of isolated drizzle between 6 AM – 4 PM, dry conditions are favored for the rest of the day.

**Wind:** Winds will be out of the SE throughout Sunday. **N of Morgan's Point:** Winds will be at 3 – 9 kts through the day Sunday. **S of Morgan's Point:** Winds will be at 7 – 12 kts for all of Sunday.

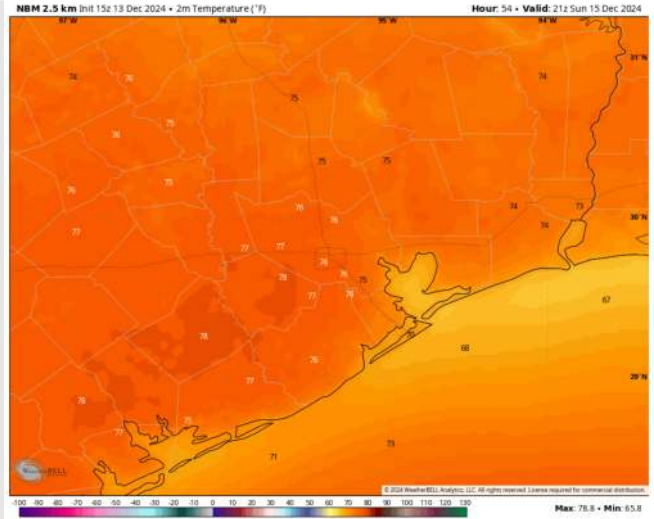
**High Temps:** **N of Morgan's Point:** Upper 70s F. **S of Morgan's Point:** Upper 60s F.

**Visibility:** Favoring Sea Fog risks SUN AM. Check the visibility slide for more info.

## Precip Image: 1 PM CT



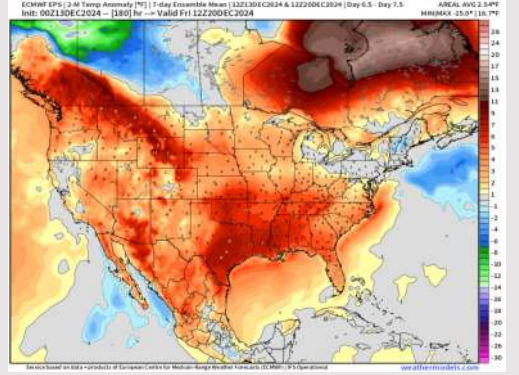
Wind Speed  
4 PM CT



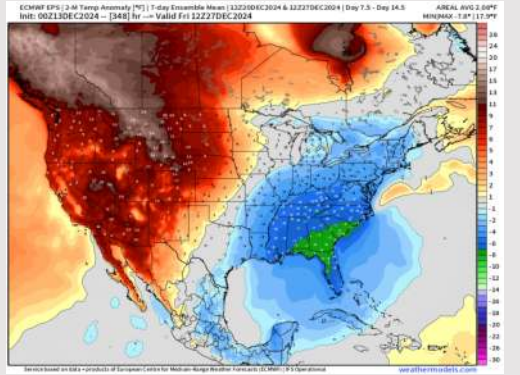
High Temps  
Sunday

# Houston Pilots: 12/13/24

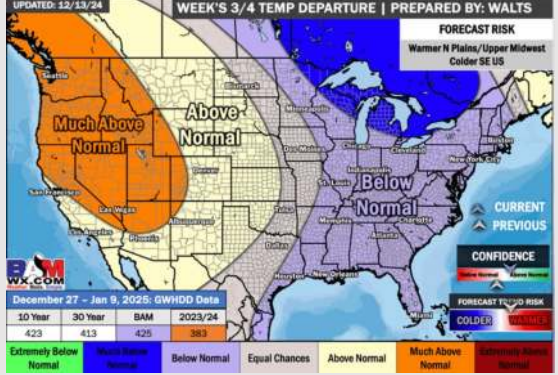
**Next 7 Day Temperature Departure**



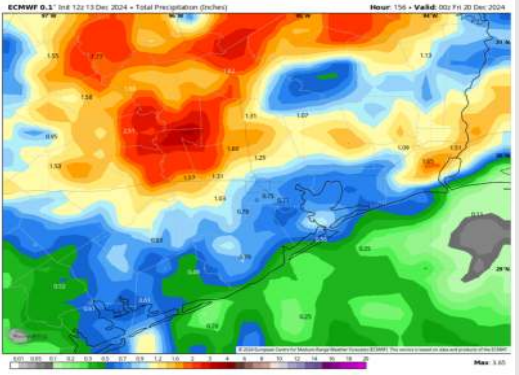
**8-14 Day Temperature Departure**



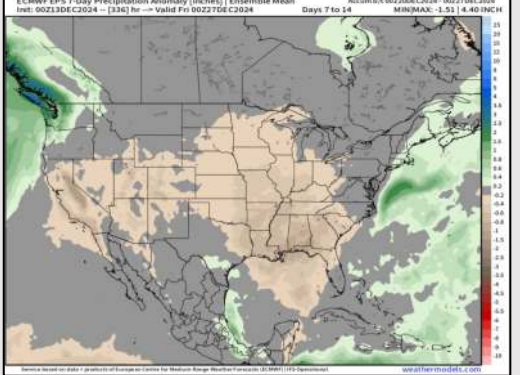
**15-30 Day Temperature Departure**



**Next 7 Day Total Precipitation**



**8-14 Day % of Average Precip.**



**15-30 Day % of Average Precip.**



- Temps are expected to be above normal for the week 1 timeframe. Rain chances will continue for the start of the weekend.
- Below-normal temperatures are favored for week 2. Favoring near normal rainfall week 2.
- Near normal temperatures and below-normal precipitation chances are expected for the weeks 3/4 timeframe.