

Houston Pilots Forecast Package



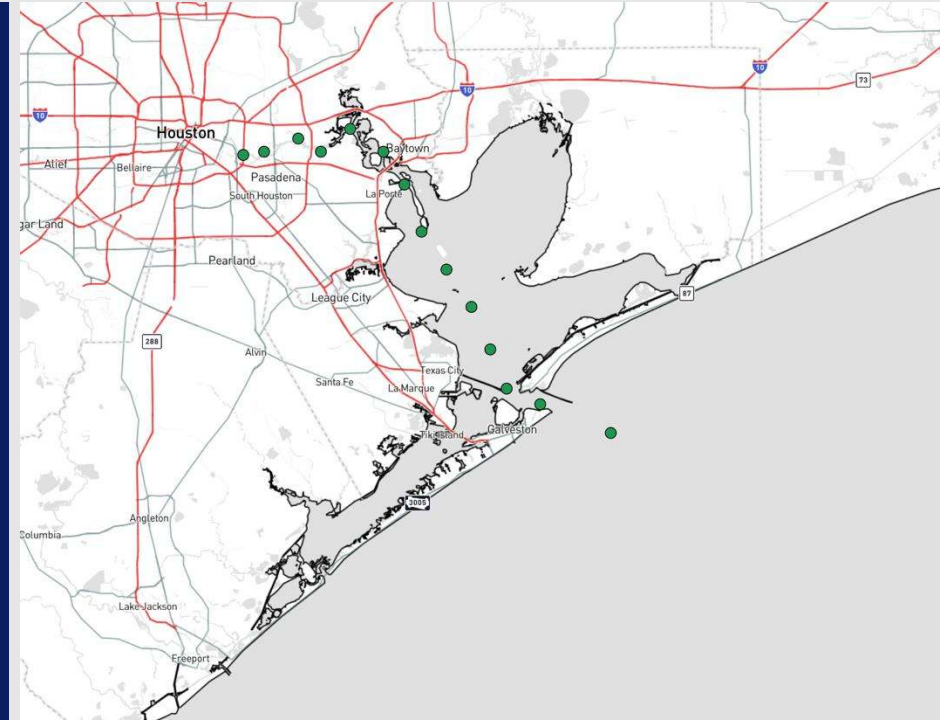
Updated: 2:00 PM CT

Thursday, December 12, 2024

Forecaster: Adam Feick

Weather Headlines

- Wind gusts pick up to 25 - 30 kts on FRI for all stations.
- No fog risks through FRI AM but watching FRI PM for isolated drizzle/fog chances.
- **Watching for sea fog potential through the weekend with widespread sea fog possible SUN.**



Current Radar: 1:35 PM CT

As always, please do not hesitate to reach out to us with any forecast questions at **(317)-560-8122**. Press **1** for forecast questions.

You can also access real-time forecast updates and 24/7 meteorological chat assistance on your **Clarity** app. Click [here](#) for login assistance.



Houston Pilots Extended Range Visibility Report



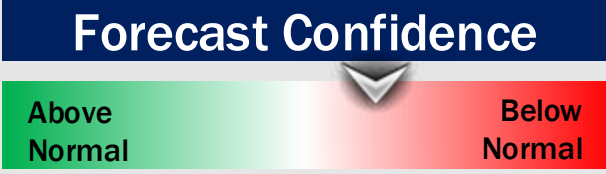
Sunday 12/15/24

Widespread sea fog favored on SUN AM. Watching the threat for sea fog to linger into the PM hours near the Boarding Station.



Monday 12/16/24

Patchy to widespread sea fog will be possible for Monday AM. Lower confidence on if this threat can linger into the PM.



Tuesday 12/17/24

Patchy to widespread sea fog will be possible for Tuesday AM. Lower confidence on if this threat can linger into the PM, but thinking storm risks will help limit this potential.



Chance for Fog

Sunday AM	Med-High
Sunday PM	Low
Monday AM	Medium
Monday PM	Low
Tuesday AM	Medium
Tuesday PM	Low

Houston Pilots Visibility Chart (miles)



Forecast Confidence



Visibility	Thu 3 pm	Thu 4 pm	Thu 5 pm	Thu 6 pm	Thu 7 pm	Thu 8 pm	Thu 9 pm	Thu 10 pm	Thu 11 pm	Fri 12 am	Fri 1 am	Fri 2 am	Fri 3 am	Fri 4 am	Fri 5 am	Fri 6 am	Fri 7 am	Fri 8 am	Fri 9 am	Fri 10 am	Fri 11 am	Fri 12 pm	Fri 1 pm	Fri 2 pm
Houston Pilots N - 610 Bridge	10	10	10	10	10	10	10	10	10	10	10	10	10	10	10	10	10	10	10	10	10	10	10	10
Houston Pilots M - Kinder 1	10	10	10	10	10	10	10	10	10	10	10	10	10	10	10	10	10	10	10	10	10	10	10	10
Houston Pilots L - Greens Bayou	10	10	10	10	10	10	10	10	10	10	10	10	10	10	10	10	10	10	10	10	10	10	10	10
Houston Pilots K - Shell Crude	10	10	10	10	10	10	10	10	10	10	10	10	10	10	10	10	10	10	10	10	10	10	10	10
Houston Pilots J - Lynchburg Ferries	10	10	10	10	10	10	10	10	10	10	10	10	10	10	10	10	10	10	10	10	10	10	10	10
Houston Pilots I - Exxon 3	10	10	10	10	10	10	10	10	10	10	10	10	10	10	10	10	10	10	10	10	10	10	10	10
Houston Pilots H - Morgans Point	10	10	10	10	10	10	10	10	10	10	10	10	10	10	10	10	10	10	10	10	10	10	10	10
Houston Pilots G - 75/76	10	10	10	10	10	10	10	10	10	10	10	10	10	10	10	10	10	10	10	10	10	10	10	9
Houston Pilots F - 63/64	10	10	10	10	10	10	10	10	10	10	10	10	10	10	10	10	10	10	10	10	10	10	10	9
Houston Pilots E - 51/52	10	10	10	10	10	10	10	10	10	10	10	10	10	10	10	10	10	10	10	10	10	10	10	9
Houston Pilots D - 37/38	10	10	10	10	10	10	10	10	10	10	10	10	10	10	10	10	10	10	10	10	10	10	10	9
Houston Pilots C - 25/26	10	10	10	10	10	10	10	10	10	10	10	10	10	10	10	10	10	10	10	10	10	10	10	9
Houston Pilots B - 11/12	10	10	10	10	10	10	10	10	10	10	10	10	10	10	10	10	10	10	10	10	10	10	10	9
Houston Pilots A - 1 & 2 Bravo	10	10	10	10	10	10	10	10	10	10	10	10	10	10	10	10	10	10	10	10	10	10	10	9

NOTE: This is automated data that may/may not agree with the official BAM thinking that's found on the daily slides or special visibility report slides. This data should be used as a guide only

Houston Pilots Wind Chart



Sustained wind 10 Knots

Gusts 15 Knots

Wind from the SE

Example

10

15

↙

Wind	Thu 3 pm	Thu 4 pm	Thu 5 pm	Thu 6 pm	Thu 7 pm	Thu 8 pm	Thu 9 pm	Thu 10 pm	Thu 11 pm	Fri 12 am	Fri 1 am	Fri 2 am	Fri 3 am	Fri 4 am	Fri 5 am	Fri 6 am	Fri 7 am	Fri 8 am	Fri 9 am	Fri 10 am	Fri 11 am	Fri 12 pm	Fri 1 pm	Fri 2 pm
Houston Pilots N - 610 Bridge	10 ↙	10 ↙	10 ↙	10 ↙	9 ↙	8 ↙	8 ↙	8 ↙	8 ↙	8 ↙	7 ↙	8 ↙	8 ↙	8 ↙	8 ↙	8 ↙	8 ↙	9 ↙	10 ↙	10 ↙	12 ↙	13 ↙	13 ↙	13 ↙
Houston Pilots M - Kinder 1	10 ↙	10 ↙	10 ↙	10 ↙	9 ↙	8 ↙	8 ↙	8 ↙	8 ↙	8 ↙	8 ↙	8 ↙	8 ↙	8 ↙	8 ↙	8 ↙	9 ↙	10 ↙	10 ↙	10 ↙	12 ↙	13 ↙	13 ↙	13 ↙
Houston Pilots L - Greens Bayou	10 ↙	10 ↙	10 ↙	10 ↙	9 ↙	8 ↙	8 ↙	8 ↙	8 ↙	8 ↙	7 ↙	8 ↙	8 ↙	8 ↙	8 ↙	8 ↙	9 ↙	10 ↙	10 ↙	10 ↙	12 ↙	13 ↙	13 ↙	13 ↙
Houston Pilots K - Shell Crude	10 ↙	10 ↙	10 ↙	10 ↙	9 ↙	8 ↙	8 ↙	8 ↙	8 ↙	8 ↙	7 ↙	8 ↙	8 ↙	8 ↙	8 ↙	8 ↙	9 ↙	10 ↙	10 ↙	10 ↙	13 ↙	13 ↙	13 ↙	13 ↙
Houston Pilots J - Lynchburg Ferries	10 ↙	12 ↙	10 ↙	10 ↙	8 ↙	8 ↙	8 ↙	8 ↙	8 ↙	7 ↙	7 ↙	7 ↙	8 ↙	8 ↙	8 ↙	8 ↙	8 ↙	10 ↙	10 ↙	10 ↙	13 ↙	13 ↙	13 ↙	14 ↙
Houston Pilots I - Exxon 3	13 ↙	13 ↙	13 ↙	13 ↙	13 ↙	13 ↙	13 ↙	13 ↙	13 ↙	13 ↙	12 ↙	13 ↙	13 ↙	13 ↙	13 ↙	13 ↙	14 ↙	14 ↙	14 ↙	14 ↙	15 ↙	15 ↙	15 ↙	15 ↙
Houston Pilots H - Morgans Point	13 ↙	13 ↙	13 ↙	13 ↙	13 ↙	13 ↙	13 ↙	13 ↙	13 ↙	13 ↙	12 ↙	12 ↙	13 ↙	13 ↙	13 ↙	13 ↙	13 ↙	14 ↙	14 ↙	14 ↙	15 ↙	15 ↙	15 ↙	15 ↙
Houston Pilots G - 75/76	13 ↙	14 ↙	14 ↙	15 ↙	14 ↙	14 ↙	14 ↙	14 ↙	14 ↙	14 ↙	13 ↙	14 ↙	14 ↙	14 ↙	15 ↙	15 ↙	15 ↙	16 ↙	16 ↙	16 ↙	17 ↙	17 ↙	16 ↙	16 ↙
Houston Pilots F - 63/64	13 ↙	13 ↙	14 ↙	14 ↙	14 ↙	14 ↙	14 ↙	14 ↙	14 ↙	13 ↙	13 ↙	13 ↙	14 ↙	14 ↙	15 ↙	15 ↙	15 ↙	16 ↙	17 ↙	16 ↙	17 ↙	17 ↙	16 ↙	17 ↙
Houston Pilots E - 51/52	13 ↙	13 ↙	14 ↙	14 ↙	14 ↙	14 ↙	14 ↙	14 ↙	14 ↙	13 ↙	13 ↙	13 ↙	13 ↙	14 ↙	15 ↙	15 ↙	15 ↙	16 ↙	16 ↙	16 ↙	17 ↙	17 ↙	17 ↙	17 ↙
Houston Pilots D - 37/38	13 ↙	13 ↙	13 ↙	13 ↙	13 ↙	13 ↙	14 ↙	14 ↙	13 ↙	13 ↙	13 ↙	13 ↙	13 ↙	13 ↙	14 ↙	15 ↙	15 ↙	15 ↙	16 ↙	16 ↙	17 ↙	17 ↙	17 ↙	17 ↙
Houston Pilots C - 25/26	13 ↙	13 ↙	13 ↙	13 ↙	13 ↙	13 ↙	13 ↙	13 ↙	13 ↙	13 ↙	12 ↙	13 ↙	13 ↙	13 ↙	13 ↙	13 ↙	14 ↙	15 ↙	15 ↙	16 ↙	16 ↙	17 ↙	17 ↙	17 ↙
Houston Pilots B - 11/12	13 ↙	13 ↙	13 ↙	13 ↙	13 ↙	13 ↙	13 ↙	13 ↙	12 ↙	12 ↙	10 ↙	10 ↙	12 ↙	12 ↙	13 ↙	13 ↙	13 ↙	13 ↙	14 ↙	15 ↙	15 ↙	16 ↙	16 ↙	16 ↙
Houston Pilots A - 1 & 2 Bravo	13 ↙	13 ↙	13 ↙	13 ↙	14 ↙	14 ↙	14 ↙	15 ↙	14 ↙	14 ↙	13 ↙	13 ↙	14 ↙	14 ↙	15 ↙	15 ↙	15 ↙	16 ↙	17 ↙	17 ↙	17 ↙	17 ↙	17 ↙	17 ↙

NOTE: This is automated data that may/may not agree with the official BAM thinking that's found on the daily slides. This data should be used as a guide only.

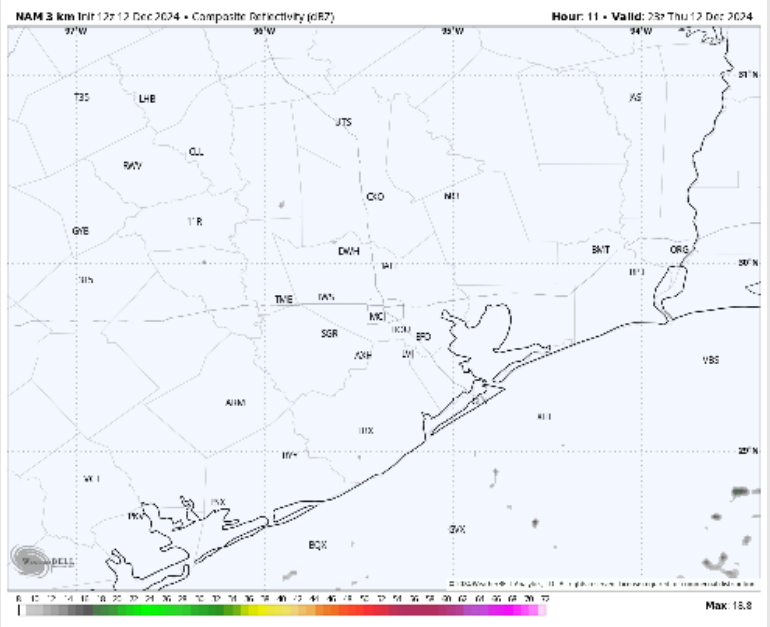
Houston Pilots: THU. 12/12/2024



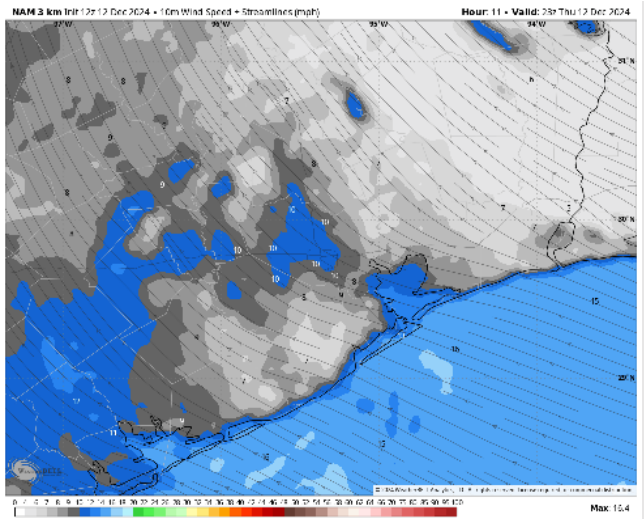
Forecast Discussion

- Precip:** Dry conditions are favored for today.
- Wind:** Winds will be out of the SE through the rest of the day. **N of Morgan's Point:** Winds will be at 6 – 10 kts through the rest of the day. **S of Morgan's Point:** Winds will be at 10 – 14 kts for the rest of the day. **Wind gusts of 15 – 20 kts in play for all Stations for the rest of the day.**
- Low Temps:** **N of Morgan's Point:** Upper 50s F. **S of Morgan's Point:** Low 60s F.
- Visibility:** Not anticipating any fog concerns for the rest of the day.

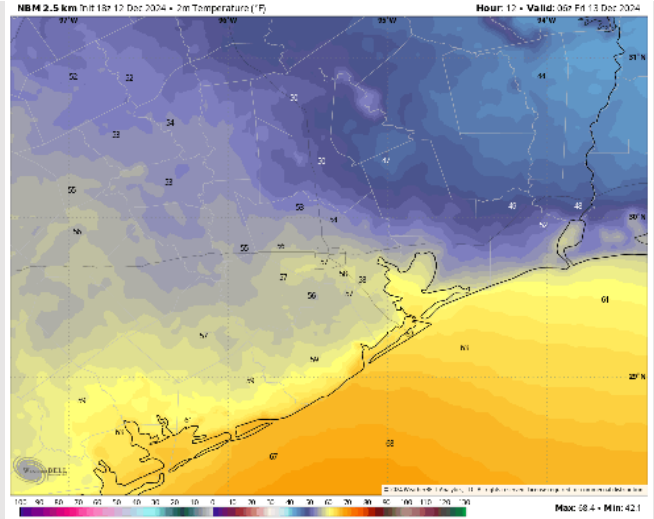
Precip Image: 5 PM CT



Wind Speed
5 PM CT



Low Temps
FRI AM



Houston Pilots: FRI. 12/13/2024



Forecast Discussion

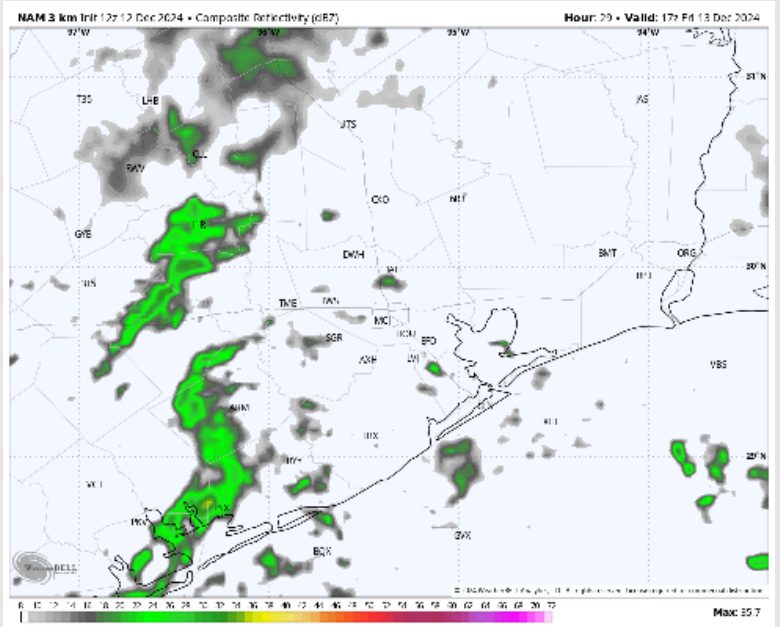
Precip: Isolated (20%) showers to be possible from 7 AM – 9 PM for all stations on Friday.

Wind: Winds will be out of the ESE for the day on Friday. **N of Morgan's Point:** Winds will be at 8 – 14 kts for all of Friday. **S of Morgan's Point:** Winds will be at 11 – 18 kts throughout the day. **Wind gusts of 25 – 30 kts will be possible for all Stations after 9 AM.**

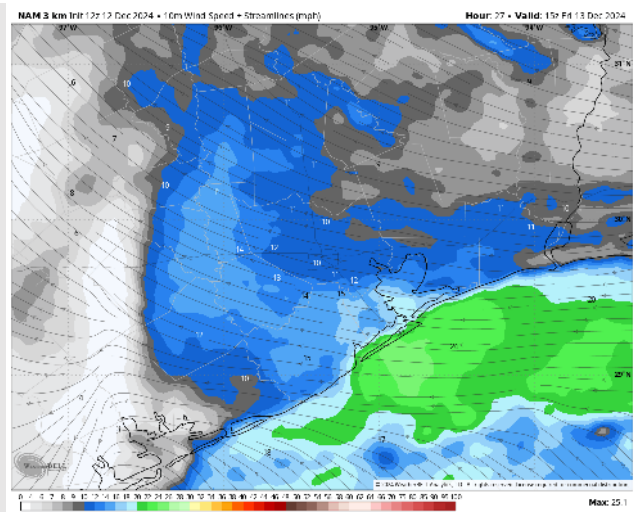
High Temps: **N of Morgan's Point:** Upper 60sF. **S of Morgan's Point:** Upper 60s F.

Visibility: Watching FRI PM (after ~ 9PM) for a low-end risk for slightly reduced visibility due to drizzle conditions / isolated pockets of fog.

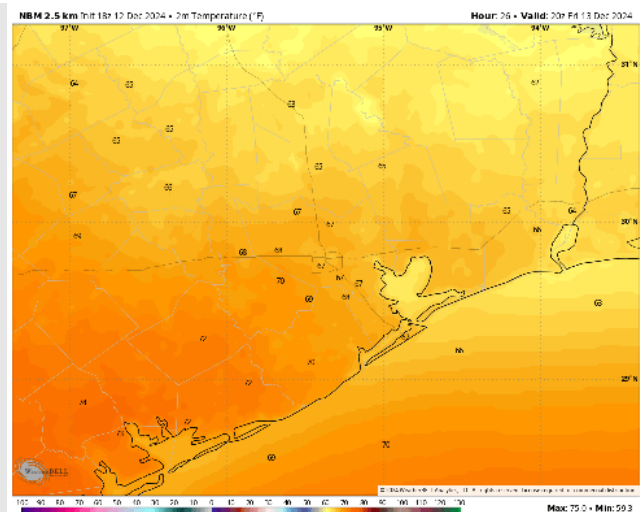
Precip Image: 11 AM CT



Wind Speed:
9 AM CT



High Temps
Friday



Houston Pilots: SAT. 12/14/2024



Forecast Discussion

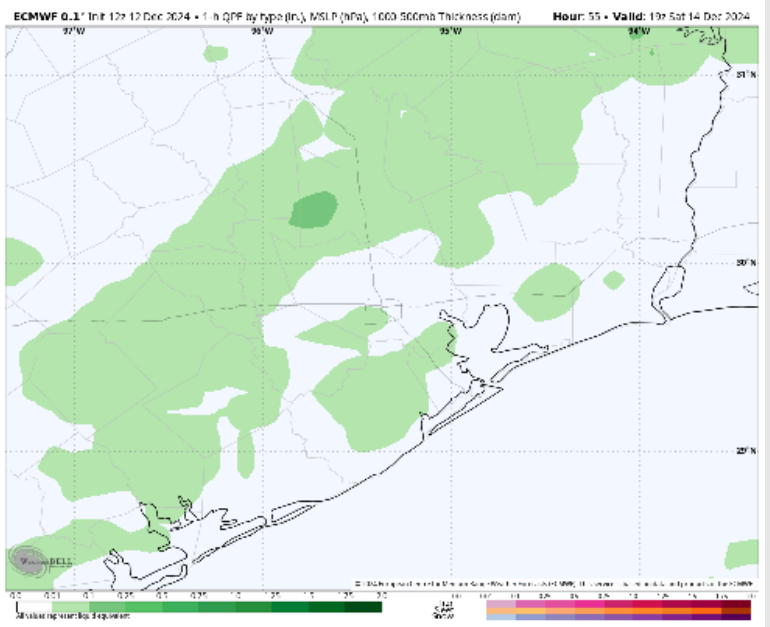
Precip: Scattered showers and storms will be favored from 8 AM – 6 PM. 40% chances for N of Morgan’s Point with only 20% chances for S of Morgan’s Point.

Wind: Winds will be out of the SE throughout the day on Saturday. **N of Morgan’s Point:** Winds will be at 3 - 8 kts for the rest of the day. **S of Morgan’s Point:** Winds will be at 8-13 kts throughout the day

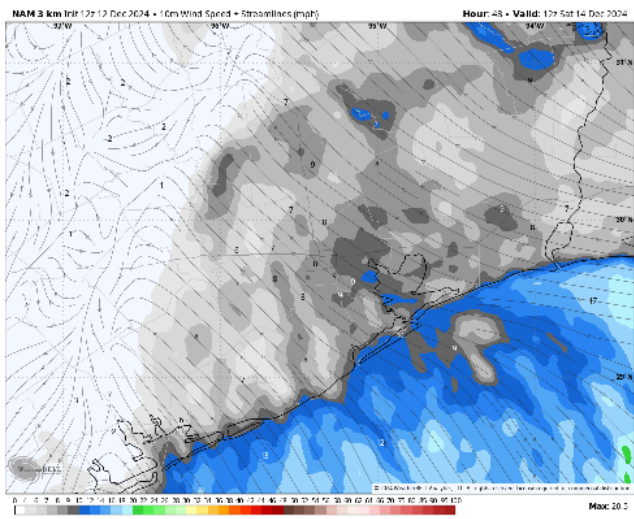
High Temps: **N of Morgan’s Point:** Mid-70s F. **S of Morgan’s Point:** Upper 60s F.

Visibility: Not anticipating fog, but briefly reduced visibilities will be possible with any rain showers

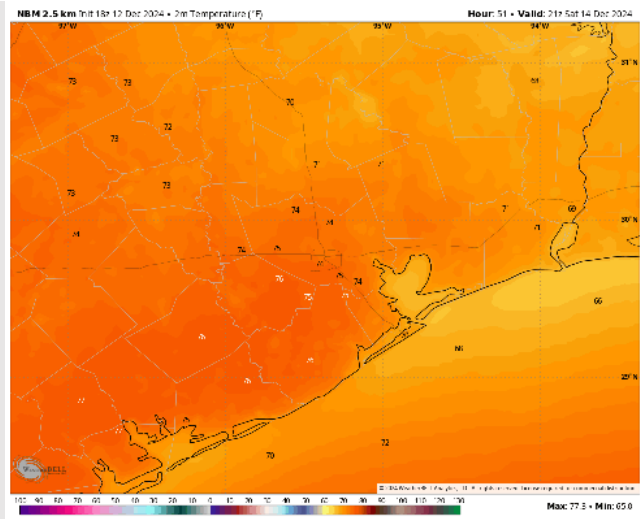
Precip Image: 1 PM CT



Wind Speed:
6 AM CT



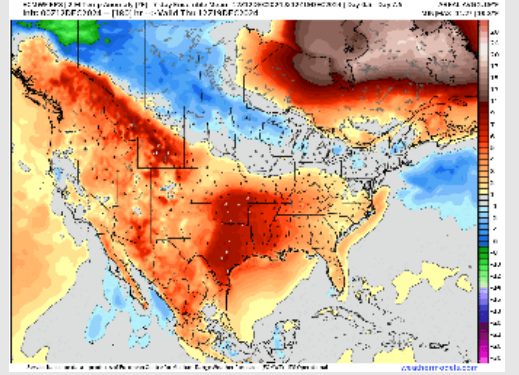
High Temps
Saturday



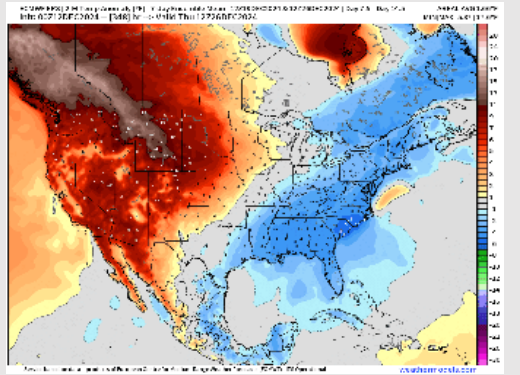
Houston Pilots: 12/12/24



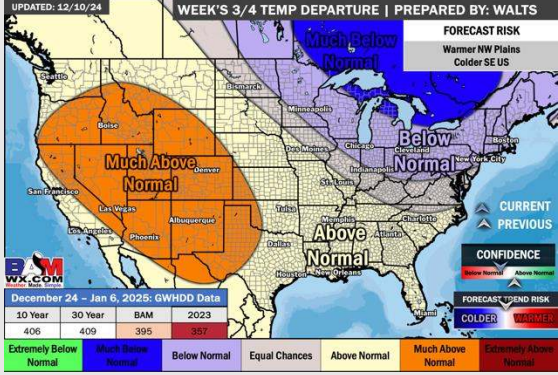
Next 7 Day Temperature Departure



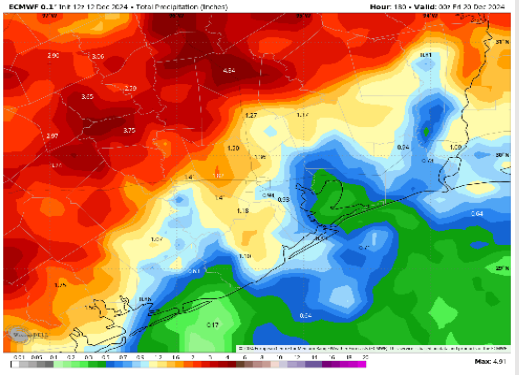
8-14 Day Temperature Departure



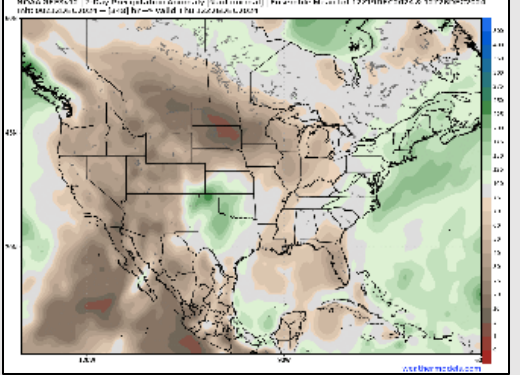
15-30 Day Temperature Departure



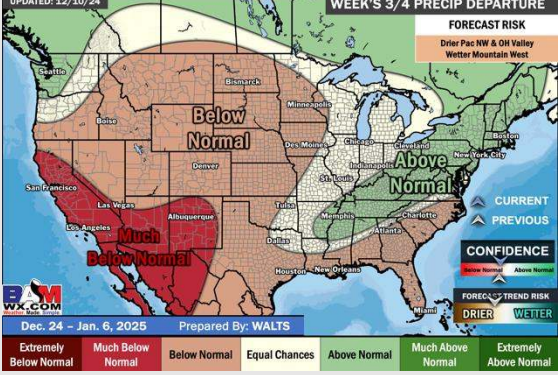
Next 7 Day Total Precipitation



8-14 Day % of Average Precip.



15-30 Day % of Average Precip.



- Temps are expected to be above normal for the week 1 timeframe. Rain chances will arrive for the weekend.
- Below-normal temperatures are favored for week 2. Favoring near normal rainfall week 2.
- Above-normal temperatures and below-normal precipitation chances are expected for the weeks 3/4 timeframe.