

# Houston Pilots Forecast Package



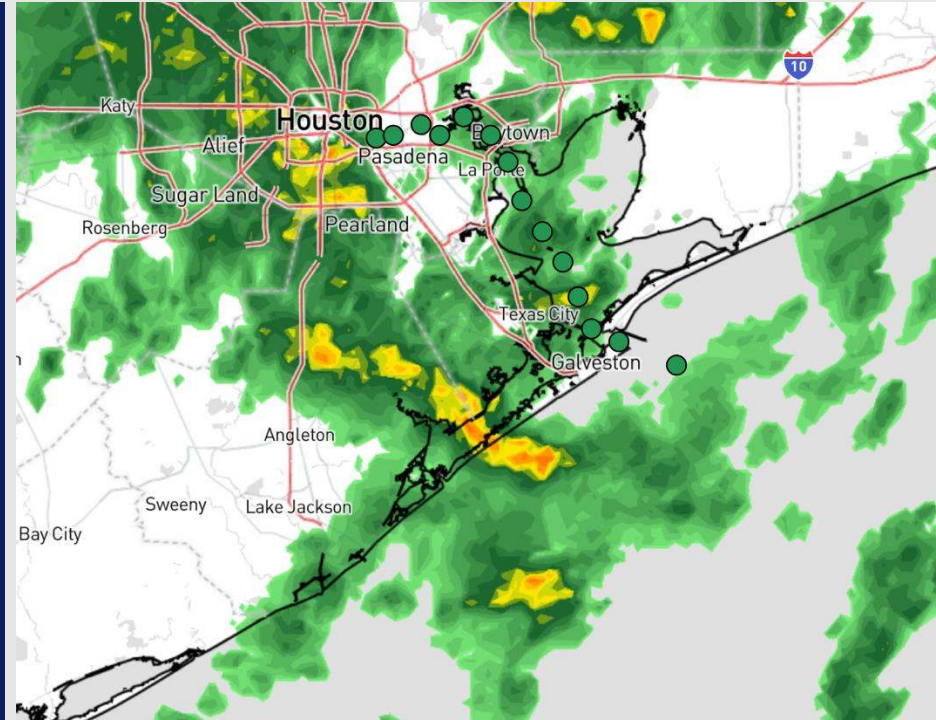
Updated: 12:55 PM CT

Sunday, December 8, 2024

Forecaster: Hope Kleitsch

## Weather Headlines

- Scattered rain showers continue through this evening and again tomorrow morning.
- Gusty winds come into play WED with wind gusts of 30-35 kts.
- **Monitoring a low-end risk of Sea Fog MON AM. Check the visibility slide for more information**



Current Radar: 12:55 PM CT



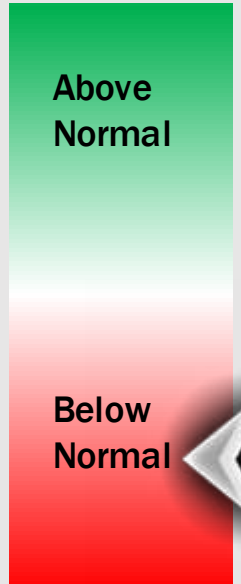
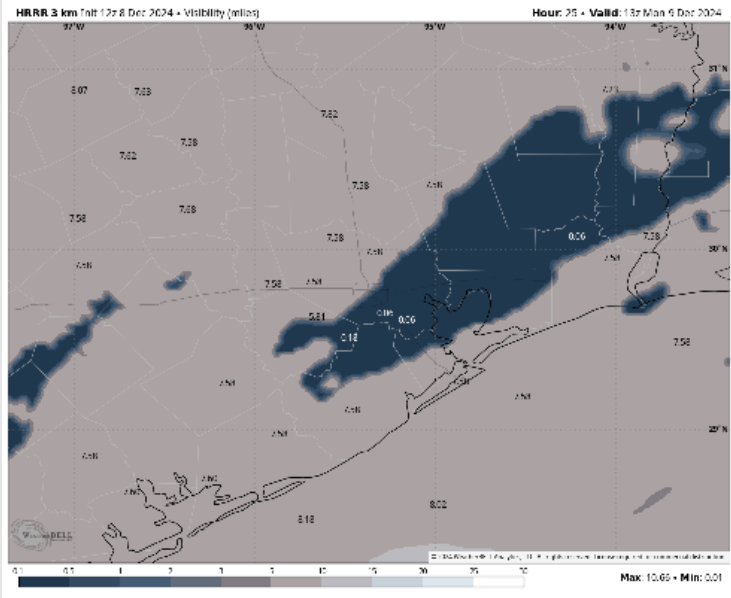
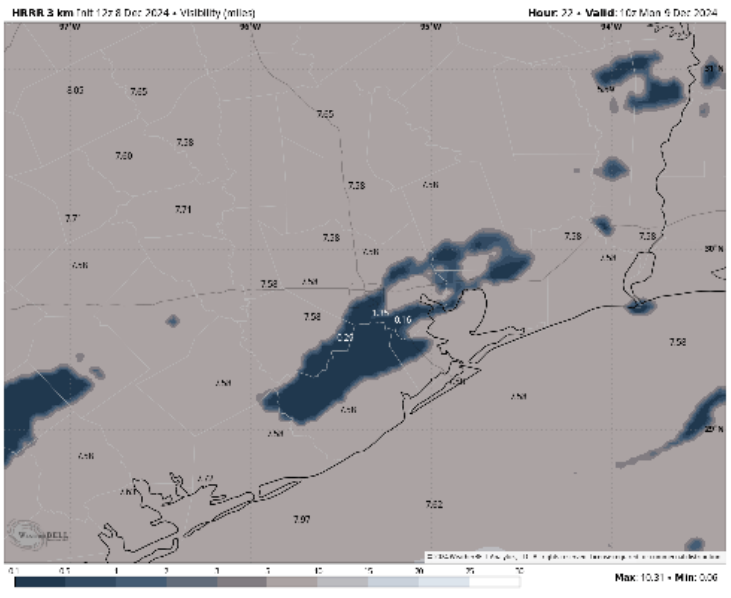
As always, please do not hesitate to reach out to us with any forecast questions via the chat option on Clarity or our on-call number, **(317)-560-8122** press 1 for forecast questions.

# Houston Pilots Visibility Report



## 4 AM CST MON VISIBILITY      7 AM CST MON VISIBILITY

## Confidence



TIMEFRAME DISCUSSED	THREAT
Through 11 AM MON	Low

- Currently favoring low-end risks for patchy sea fog for all Stations S from 2 AM to 11 AM. Watching 4 AM to 8 AM timeframe for the “greatest” threat. Overall confidence in sea fog is lower than normal.
- Reduced visibilities of 1-3 will be likely with areas of visibilities less than ½ mile possible.
- Sea fog risks are favored to begin to work out post-8 AM. However, lingering pockets can be possible through 11 AM.

# Houston Pilots Extended Range Visibility Report



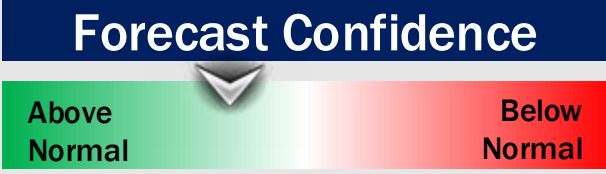
## Wednesday 12/11/24

Fog not favored for WED.



## Thursday 12/12/24

Fog not favored for THU.



## Friday 12/13/24

Fog not favored for FRI.



## Chance for Fog

Wednesday AM	Unlikely
Wednesday PM	Unlikely
Thursday AM	Unlikely
Thursday PM	Unlikely
Friday AM	Unlikely
Friday PM	Unlikely

# Houston Pilots Visibility Chart (miles)



## Forecast Confidence



Visibility	Sun 2 pm	Sun 3 pm	Sun 4 pm	Sun 5 pm	Sun 6 pm	Sun 7 pm	Sun 8 pm	Sun 9 pm	Sun 10 pm	Sun 11 pm	Mon 12 am	Mon 1 am	Mon 2 am	Mon 3 am	Mon 4 am	Mon 5 am	Mon 6 am	Mon 7 am	Mon 8 am	Mon 9 am	Mon 10 am	Mon 11 am	Mon 12 pm	Mon 1 pm
Houston Pilots N - 610 Bridge	4.9	4.9	4.9	4.9	3.9	3.9	4.9	4.9	4.9	4.9	4.9	4.9	4.9	4.9	4.9	4.9	3.9	3.9	2.9	0.5	3.9	6.9	7.9	9
Houston Pilots M - Kinder 1	4.9	4.9	4.9	4.9	3.9	3.9	4.9	4.9	4.9	4.9	4.9	4.9	4.9	4.9	4.9	4.9	3.9	3.9	2.9	1.6	3.9	6.9	7.9	9
Houston Pilots L - Greens Bayou	4.9	4.9	4.9	4.9	3.9	3.9	4.9	4.9	4.9	4.9	4.9	4.9	4.9	4.9	4.9	4.9	3.9	3.9	2.9	2	3.9	6.9	6.9	9
Houston Pilots K - Shell Crude	4.9	4.9	4.9	4.9	3.9	3.9	4.9	4.9	4.9	4.9	4.9	4.9	4.9	4.9	4.9	4.9	3.9	3.9	2.9	2.5	4.9	6.9	6.9	9
Houston Pilots J - Lynchburg Ferries	4.9	4.9	4.9	4.9	3.9	3.9	4.9	4.9	4.9	4.9	4.9	4.9	4.9	4.9	4.9	4.9	3.9	3.9	2.9	2	3.9	5.9	6.9	9
Houston Pilots I - Exxon 3	4.9	4.9	4.9	4.9	3.9	3.9	4.9	4.9	4.9	4.9	4.9	4.9	4.9	4.9	4.9	4.9	3.9	3.9	2.9	2.5	4.9	5.9	6.9	7.9
Houston Pilots H - Morgans Point	4.9	3.9	4.9	4.9	3.9	3.9	4.9	4.9	4.9	4.9	4.9	4.9	4.9	4.9	4.9	4.9	3.9	3.9	2.9	2.9	4.9	5.9	6.9	7.9
Houston Pilots G - 75/76	4.9	3.9	5.9	4.9	3.9	4.9	4.9	4.9	4.9	4.9	4.9	4.9	4.9	4.9	4.9	4.9	4.9	3.9	3.9	2.9	4.9	5.9	9	9
Houston Pilots F - 63/64	4.9	4.9	5.9	4.9	3.9	4.9	4.9	4.9	4.9	4.9	4.9	4.9	4.9	4.9	4.9	4.9	4.9	3.9	3.9	2.9	4.9	5.9	9	9
Houston Pilots E - 51/52	4.9	4.9	5.9	4.9	3.9	4.9	4.9	4.9	4.9	4.9	4.9	4.9	3.9	2.9	2.9	2.9	2.5	2.5	2	2	3.9	4.9	8	9
Houston Pilots D - 37/38	4.9	4.9	5.9	4.9	3.9	4.9	4.9	4.9	4.9	4.9	4.9	4.9	6.9	4.9	4.9	4.9	4.9	3.9	3.9	2.9	4.9	5.9	7	9
Houston Pilots C - 25/26	4.9	5.9	6.9	4.9	3.9	4.9	4.9	4.9	4.9	5.9	6.9	8	6.9	6.9	6.9	6.9	5.9	4.9	4.9	4.9	5.9	6.9	7	9
Houston Pilots B - 11/12	4.9	5.9	6.9	5.9	3.9	4.9	4.9	4.9	4.9	5.9	6.9	8	6.9	6.9	6.9	6.9	5.9	5.9	4.9	4.9	5.9	6.9	6	8
Houston Pilots A - 1 & 2 Bravo	5.9	5.9	6.9	6.9	4.9	5.9	5.9	5.9	5.9	5.9	6.9	8	8	9	7.9	6.9	6.9	6.9	6.9	4.9	6.9	6.9	7	8

**NOTE: This is automated data that may/may not agree with the official BAM thinking that's found on the daily slides or special visibility report slides. This data should be used as a guide only**

# Houston Pilots Wind Chart



Sustained wind 10 Knots

Gusts 15 Knots

Wind from the SE

**Example**

10

15

↖

Wind	Sun 2 pm	Sun 3 pm	Sun 4 pm	Sun 5 pm	Sun 6 pm	Sun 7 pm	Sun 8 pm	Sun 9 pm	Sun 10 pm	Sun 11 pm	Mon 12 am	Mon 1 am	Mon 2 am	Mon 3 am	Mon 4 am	Mon 5 am	Mon 6 am	Mon 7 am	Mon 8 am	Mon 9 am	Mon 10 am	Mon 11 am	Mon 12 pm	Mon 1 pm
Houston Pilots N - 610 Bridge	5 ↗	6 ↗	6 ↗	6 ↗	6 ↗	6 ↗	5 ↗	5 ↗	5 ↗	5 ↗	5 ↗	5 ↗	5 ↗	3 ↗	5 ↗	3 ↗	3 ↗	3 ↗	5 ↗	6 ↗	6 ↗	8 ↗	8 ↗	9 ↗
Houston Pilots M - Kinder 1	5 ↗	6 ↗	6 ↗	6 ↗	6 ↗	6 ↗	5 ↗	5 ↗	5 ↗	5 ↗	3 ↗	5 ↗	3 ↗	3 ↗	3 ↗	3 ↗	3 ↗	3 ↗	5 ↗	6 ↗	6 ↗	8 ↗	8 ↗	9 ↗
Houston Pilots L - Greens Bayou	6 ↗	6 ↗	6 ↗	6 ↗	6 ↗	6 ↗	5 ↗	5 ↗	3 ↗	3 ↗	3 ↗	5 ↗	3 ↗	3 ↗	3 ↗	3 ↗	3 ↗	3 ↗	5 ↗	6 ↗	6 ↗	7 ↗	8 ↗	9 ↗
Houston Pilots K - Shell Crude	6 ↗	6 ↗	6 ↗	6 ↗	6 ↗	6 ↗	5 ↗	5 ↗	3 ↗	3 ↗	3 ↗	3 ↗	3 ↗	3 ↗	3 ↗	3 ↗	3 ↗	3 ↗	5 ↗	6 ↗	6 ↗	7 ↗	8 ↗	9 ↗
Houston Pilots J - Lynchburg Ferries	5 ↗	6 ↗	6 ↗	6 ↗	6 ↗	5 ↗	5 ↗	3 ↗	3 ↗	3 ↗	3 ↗	3 ↗	3 ↗	3 ↗	3 ↗	3 ↗	3 ↗	3 ↗	3 ↗	5 ↗	6 ↗	7 ↗	8 ↗	9 ↗
Houston Pilots I - Exxon 3	7 ↗	7 ↗	8 ↗	8 ↗	8 ↗	8 ↗	7 ↗	7 ↗	7 ↗	7 ↗	7 ↗	7 ↗	7 ↗	7 ↗	7 ↗	6 ↗	6 ↗	6 ↗	7 ↗	8 ↗	8 ↗	8 ↗	10 ↗	10 ↗
Houston Pilots H - Morgans Point	6 ↗	7 ↗	8 ↗	8 ↗	8 ↗	7 ↗	7 ↗	7 ↗	7 ↗	6 ↗	6 ↗	6 ↗	6 ↗	6 ↗	6 ↗	6 ↗	6 ↗	6 ↗	6 ↗	7 ↗	8 ↗	8 ↗	9 ↗	10 ↗
Houston Pilots G - 75/76	6 ↗	7 ↗	8 ↗	8 ↗	8 ↗	8 ↗	8 ↗	8 ↗	8 ↗	8 ↗	7 ↗	8 ↗	7 ↗	7 ↗	7 ↗	7 ↗	7 ↗	7 ↗	7 ↗	8 ↗	8 ↗	8 ↗	9 ↗	10 ↗
Houston Pilots F - 63/64	6 ↗	6 ↗	7 ↗	8 ↗	8 ↗	8 ↗	8 ↗	8 ↗	8 ↗	7 ↗	7 ↗	7 ↗	7 ↗	7 ↗	7 ↗	7 ↗	7 ↗	7 ↗	7 ↗	8 ↗	8 ↗	8 ↗	8 ↗	9 ↗
Houston Pilots E - 51/52	6 ↗	6 ↗	7 ↗	8 ↗	8 ↗	8 ↗	8 ↗	7 ↗	7 ↗	7 ↗	6 ↗	6 ↗	6 ↗	6 ↗	6 ↗	6 ↗	6 ↗	6 ↗	6 ↗	7 ↗	8 ↗	8 ↗	8 ↗	9 ↗
Houston Pilots D - 37/38	6 ↗	7 ↗	8 ↗	8 ↗	8 ↗	8 ↗	8 ↗	7 ↗	7 ↗	7 ↗	6 ↗	6 ↗	6 ↗	6 ↗	6 ↗	6 ↗	6 ↗	6 ↗	6 ↗	7 ↗	8 ↗	8 ↗	8 ↗	9 ↗
Houston Pilots C - 25/26	7 ↗	7 ↗	8 ↗	8 ↗	8 ↗	8 ↗	8 ↗	7 ↗	7 ↗	7 ↗	6 ↗	6 ↗	6 ↗	6 ↗	6 ↗	6 ↗	6 ↗	6 ↗	6 ↗	7 ↗	8 ↗	8 ↗	8 ↗	9 ↗
Houston Pilots B - 11/12	7 ↗	7 ↗	8 ↗	8 ↗	8 ↗	8 ↗	7 ↗	7 ↗	6 ↗	6 ↗	6 ↗	6 ↗	6 ↗	6 ↗	6 ↗	6 ↗	6 ↗	6 ↗	6 ↗	6 ↗	7 ↗	8 ↗	8 ↗	9 ↗
Houston Pilots A - 1 & 2 Bravo	7 ↗	7 ↗	8 ↗	8 ↗	8 ↗	9 ↗	9 ↗	9 ↗	8 ↗	8 ↗	8 ↗	8 ↗	8 ↗	8 ↗	7 ↗	7 ↗	7 ↗	7 ↗	7 ↗	7 ↗	8 ↗	8 ↗	8 ↗	8 ↗

**NOTE: This is automated data that may/may not agree with the official BAM thinking that's found on the daily slides. This data should be used as a guide only.**

# Houston Pilots: SUN. 12/8/2024



## Forecast Discussion

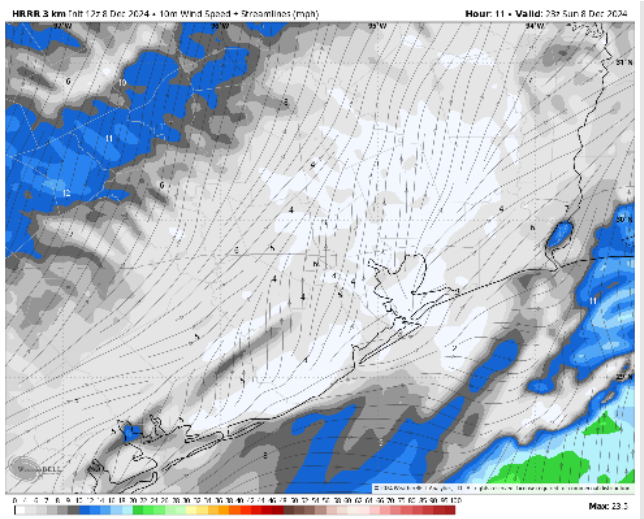
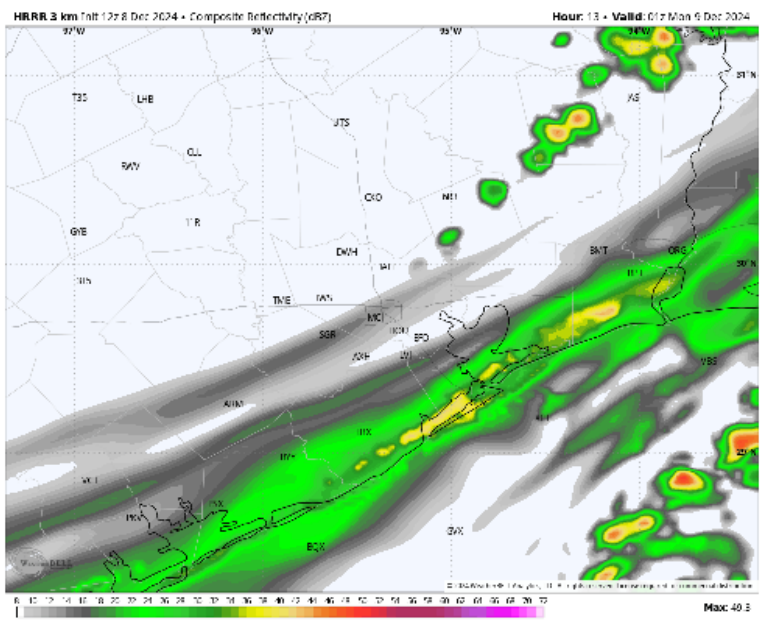
**Precip:** Widespread showers (60%) continue through 7PM before becoming more scattered in nature through 9PM.

**Wind:** Winds will be variable throughout the rest of the day, with a tendency to be out of the SE. **N of Morgan's Point:** Winds will be at 2 – 7 kts throughout the day. **S of Morgan's Point:** Winds will be at 3– 8 kts through the rest of the day.

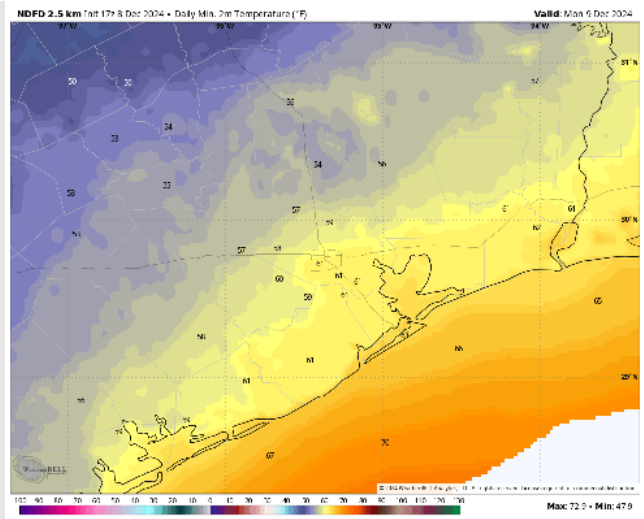
**Low Temps:** **N of Morgan's Point:** Low 60s F. **S of Morgan's Point:** Mid 60s F.

**Visibility:** No fog concerns for today but watching for fog MON AM. See visibility slide.

## Precip Image: 7 PM CT



Wind Speed:  
5 PM CT



Low Temps  
MON AM

# Houston Pilots: MON. 12/9/2024



## Forecast Discussion

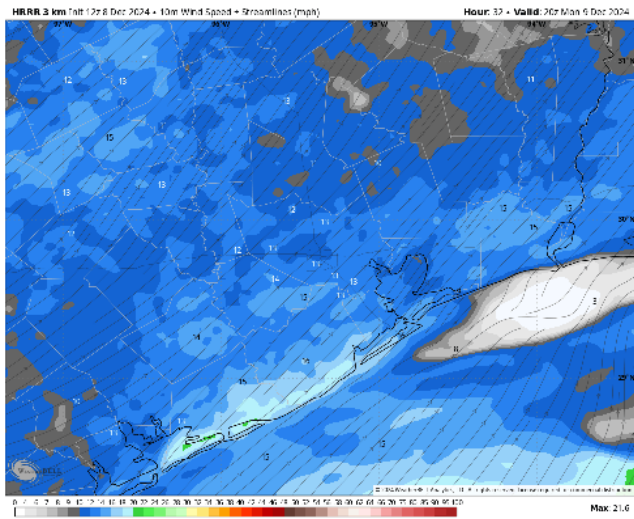
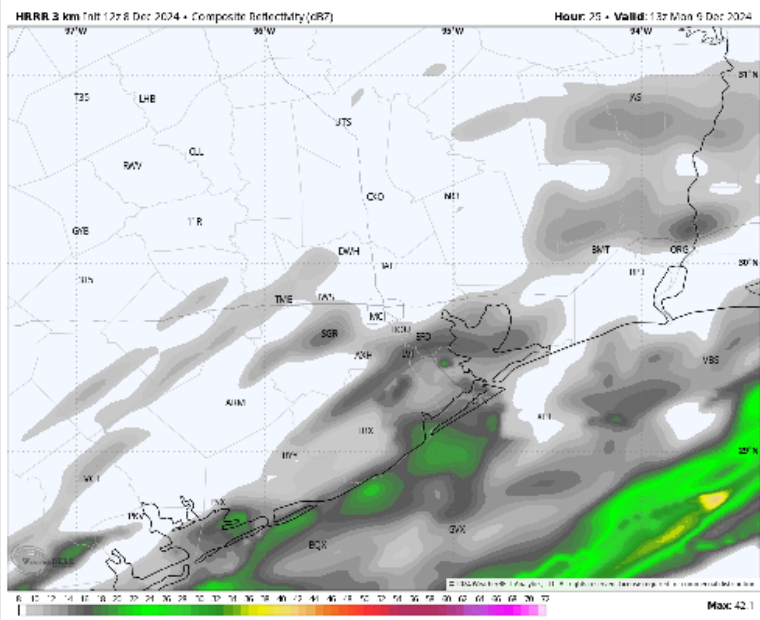
**Precip:** Scattered light showers possible from 4AM to 12PM with dry conditions favored through the remainder of the day.

**Wind:** Winds will be out of the SSW throughout the day. **N of Morgan's Point:** Winds will be at 3 – 8 kts through 10AM before increasing to 7 – 12 kts for the rest of the day. **S of Morgan's Point:** Winds will be at 3 – 8 kts through 10 AM before increasing to 7 – 12 kts for the rest of the day. Winds may be slightly higher at 11 - 16 kts near the Boarding Station.

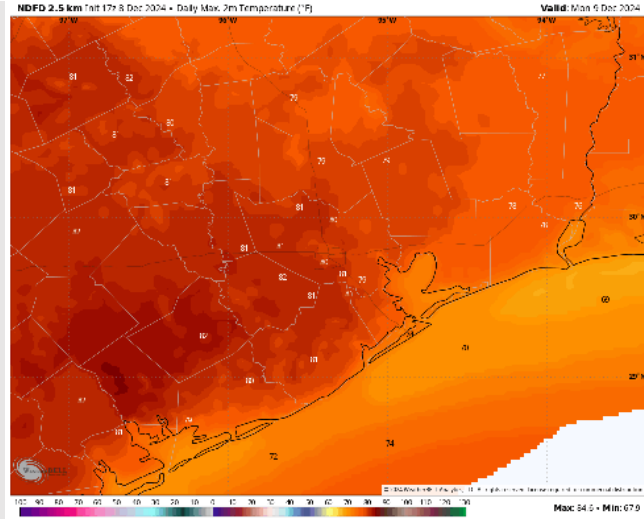
**High Temps:** **N of Morgan's Point:** Near 80 F. **S of Morgan's Point:** Lower to mid 70s F.

**Visibility:** Monitoring the potential for patchy sea fog in the AM.

## Precip Image: 8 AM CT



Wind Speed  
2 PM CT



High Temps  
Monday

## Forecast Discussion

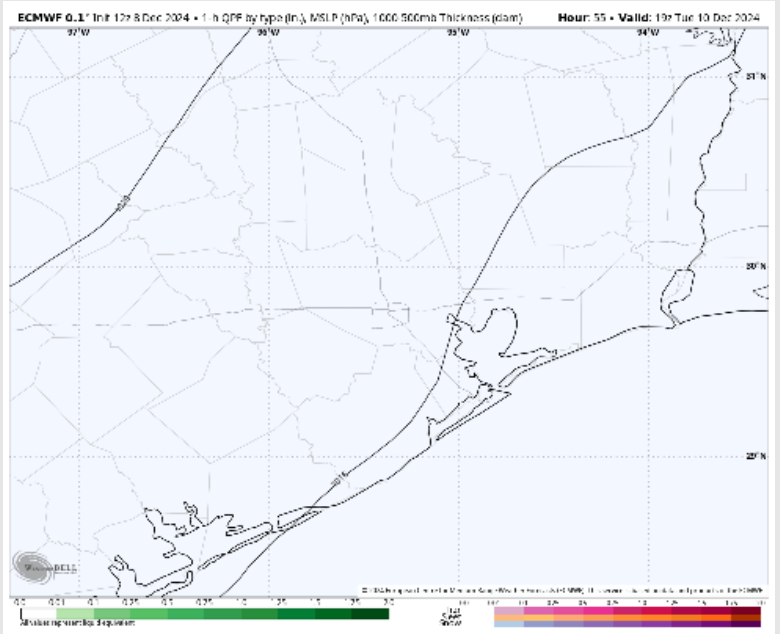
**Precip:** Favoring dry conditions for Tuesday.

**Wind:** Winds will be out of the N/NW through the day. **N of Morgan's Point:** Winds will be at 4 - 9 kts through 12 PM before increasing to 9 - 14 kts for the rest of Tuesday. **S of Morgan's Point:** Winds will be at 10 - 15 kts throughout the morning, and then slowly increasing throughout the afternoon. Winds will reach 20 - 25 kts by 4 PM, remaining there for the rest of the day. **Wind gusts of 30 - 35 kts will be in play for Stations S of Morgan's Point after 4 PM Tuesday.**

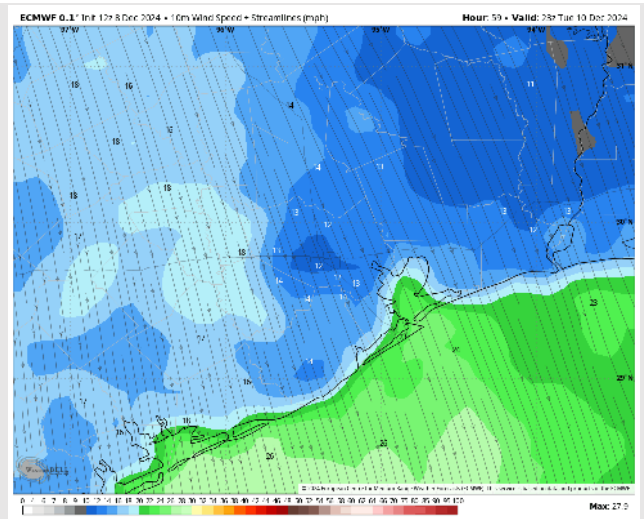
**High Temps:** **N of Morgan's Point:** Mid-60s F. **S of Morgan's Point:** Mid-60s F.

**Visibility:** No fog concerns for Tuesday.

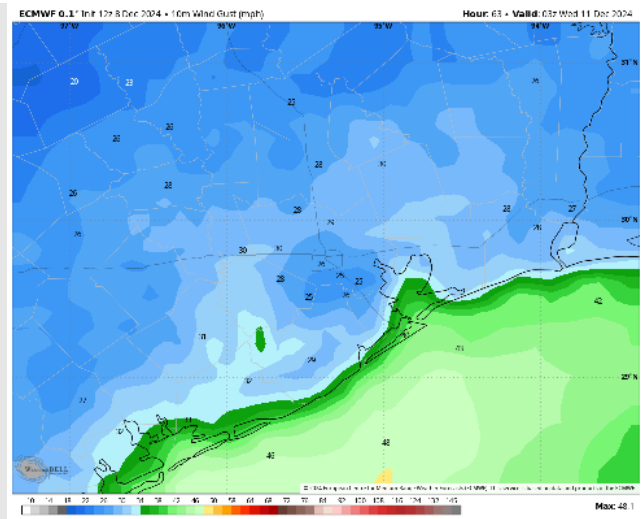
## Precip Image: 1 PM CT



Wind Speed:  
5 PM CT



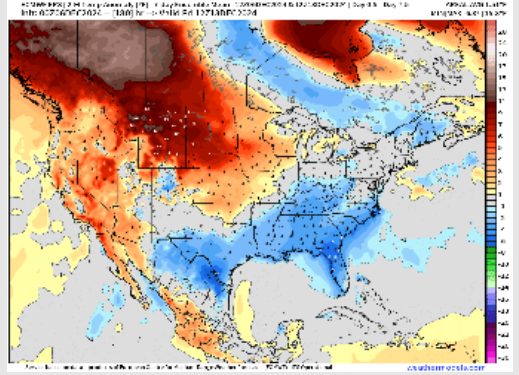
Wind Gusts  
9 PM CT



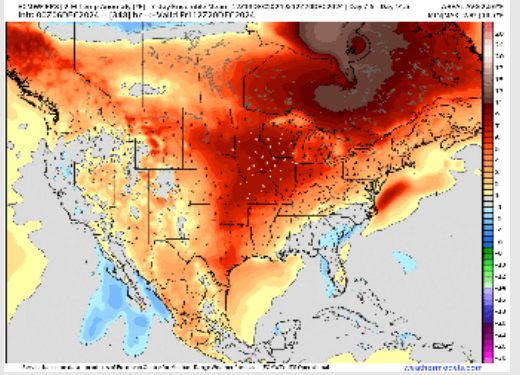


# Houston Pilots: 12/8/24

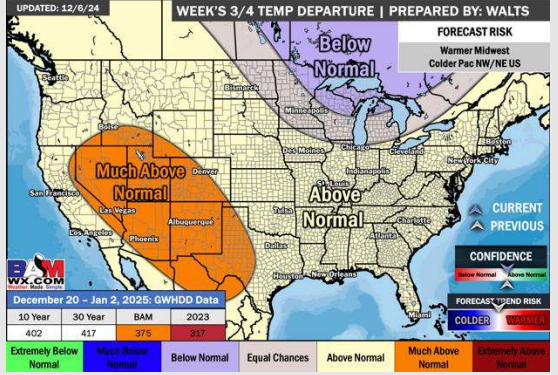
**Next 7 Day Temperature Departure**



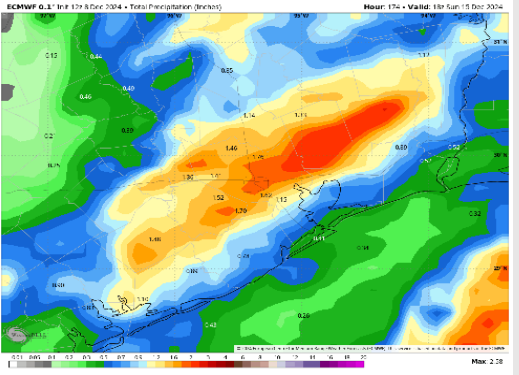
**8-14 Day Temperature Departure**



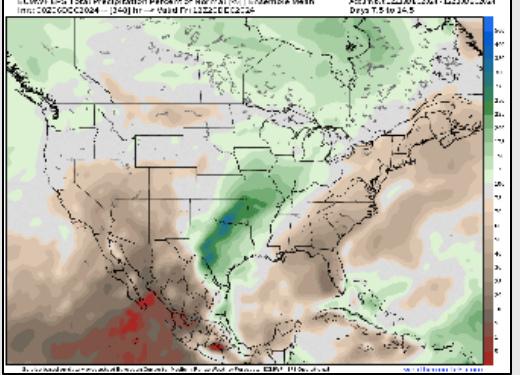
**15-30 Day Temperature Departure**



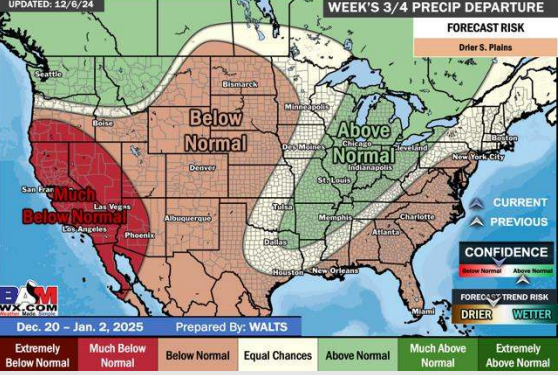
**Next 7 Day Total Precipitation**



**8-14 Day % of Average Precip.**



**15-30 Day % of Average Precip.**



- Temps are expected to be below normal for the week 1 timeframe. Above normal rainfall is expected through the week 1 timeframe with several rounds of rain in the picture.
- Above normal temperatures are favored for week 2. Favoring above normal rainfall week 2.
- Above normal temperatures and below-normal precipitation chances are expected for the weeks 3/4 timeframe.